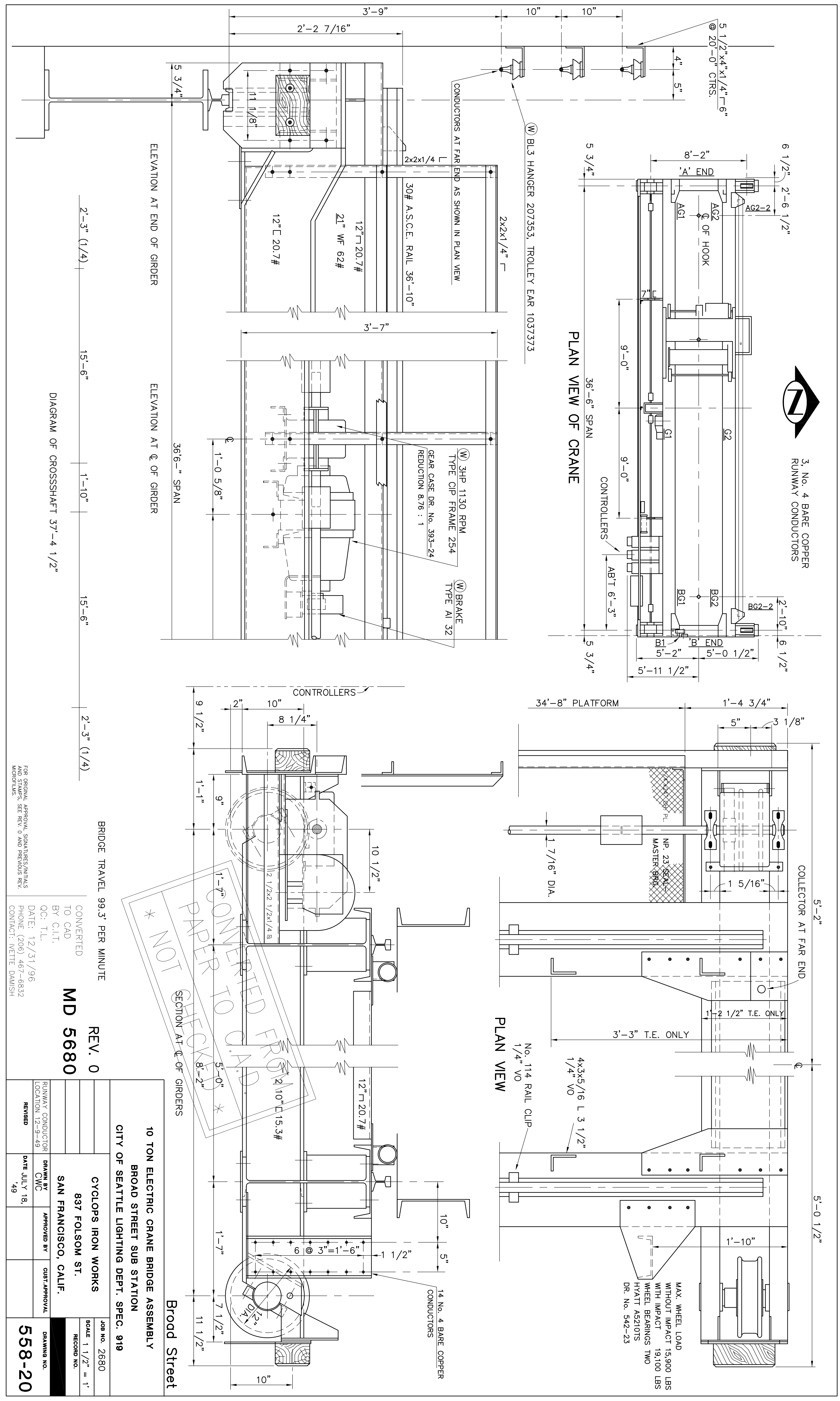


REVISIONS			
REV	DATE	MF	
DR	CK	APP	
W.O.#			
DESCRIPTION			



BRIDGE TRAVEL 99.3' PER MINUTE

CONVERTED TO CAD BY C.I.T.

DATE: 12/31/96

QC: T.L.

FOR ORIGINAL APPROVAL SIGNATURES AND WORKSHEET NO. SAN FRANCISCO 49

CONTACT: WETTE DAMISH

10 TON ELECTRIC CRANE BRIDGE ASSEMBLY		JOB NO. 2680	
BROAD STREET SUB STATION		SCALE 1 1/2" = 1'	
CITY OF SEATTLE LIGHTING DEPT. SPEC. 919		RECORD NO.	
CYCLOPS IRON WORKS	DRAWN BY	APPROVED BY	
837 FOLSOM ST.	C.I.C.	CUST. APPROVAL	
SAN FRANCISCO, CALIF.	DATE	DRAWING NO.	
	JULY 18, '49	558-20	

ENDORSEMENTS	
SIGNATURE	DATE
DR. CONC.	7/18/49
DSN.	
CK.	
DATE	

CITY OF SEATTLE	BROAD STREET SUB STATION	SHEET
CITY LIGHT DEPARTMENT	10 TON ELECTRIC CRANE BRIDGE ASSEMBLY	OF
APPROVED FOR CITY LIGHT DEPARTMENT	MD-5680	DRAWING NO.
DATE	1 1/2" = 1'	SCALE
		REV. NO.