



A Summary of Historical Wildlife Harvest in North Cascades National Park Complex, Washington

Natural Resource Report NPS/NOCA/NRR—2015/1084



ON THE COVER

From top left in clockwise order: Mule Deer, Mountain Goat, Elk, Bobcat, Black Bear, and Cougar.
Photographs from: NPS files.

A Summary of Historical Wildlife Harvest in North Cascades National Park Complex, Washington

Natural Resource Report NPS/NOCA/NRR—2015/1084

Roger G. Christophersen

National Park Service
North Cascades National Park Complex
810 State Route 20
Sedro-Woolley, WA 98284

November 2015

U.S. Department of the Interior
National Park Service
Natural Resource Stewardship and Science
Fort Collins, Colorado

The National Park Service, Natural Resource Stewardship and Science office in Fort Collins, Colorado, publishes a range of reports that address natural resource topics. These reports are of interest and applicability to a broad audience in the National Park Service and others in natural resource management, including scientists, conservation and environmental constituencies, and the public.

The Natural Resource Report Series is used to disseminate comprehensive information and analysis about natural resources and related topics concerning lands managed by the National Park Service. The series supports the advancement of science, informed decision-making, and the achievement of the National Park Service mission. The series also provides a forum for presenting more lengthy results that may not be accepted by publications with page limitations.

All manuscripts in the series receive the appropriate level of peer review to ensure that the information is scientifically credible, technically accurate, appropriately written for the intended audience, and designed and published in a professional manner.

This report received informal peer review by subject-matter experts who were not directly involved in the collection, analysis, or reporting of the data.

Views, statements, findings, conclusions, recommendations, and data in this report do not necessarily reflect views and policies of the National Park Service, U.S. Department of the Interior. Mention of trade names or commercial products does not constitute endorsement or recommendation for use by the U.S. Government.

This report is available in digital format from the North Cascades National Park website (<http://www.nps.gov/noca/index.htm>) and the Natural Resource Publications Management website (<http://www.nature.nps.gov/publications/nrpm/>). To receive this report in a format optimized for screen readers, please email irma@nps.gov.

Please cite this publication as:

Christophersen, R. G. 2015. A summary of historical wildlife harvest in North Cascades National Park Complex, Washington. Natural Resource Report NPS/NOCA/NRR—2015/1084. National Park Service, Fort Collins, Colorado.

Contents

	Page
Figures.....	iv
Tables.....	iv
Appendices.....	v
Executive Summary	vi
Acknowledgments.....	vii
Introduction.....	1
Study Area	2
Methods.....	4
Data	4
Results.....	6
Deer	6
Elk	7
Black Bear	9
Cougar	10
Mountain Goat.....	11
Furbearers	12
Small Game	14
Discussion/Recommendations	16
Literature Cited	19

Figures

	Page
Figure 1. Location of Game Management Unit 426 Diablo and adjacent units relative to NOCA boundary.	2
Figure 2. Location of Game Management Unit 301/244 Clark and adjacent units relative to NOCA boundary.	3

Tables

	Page
Table 1. Deer general harvest summary (all methods) from GMUs 426 Diablo and 301/244 Clark, WDFW Regions 2 and 4, and statewide, 1997–2013.	6
Table 2. Elk general harvest summary (all methods) from GMUs 426 Diablo, 437 Sauk, 418 Nooksack, 301/244 Clark, 243 Manson, WDFW Regions 2 and 4, and statewide, 1997–2013.	8
Table 3. Black bear general harvest summary for GMUs 426 Diablo and 301/244 Clark, BBUs 3 and 6, and statewide, 1997–2013.	9
Table 4. Cougar harvest summary for GMUs 426 Diablo and 301/244 Clark, CMUs 3 and 5, and statewide, 1997–2013.	10
Table 5. Mountain goat harvest summary from GMUs adjacent to NOCA for years data were available, 1948–2013.	11
Table 6. Harvest summary of bobcat and otter CITES ¹ pelt sealing reports from Skagit, Whatcom, and Chelan counties, 1997–2008.	12
Table 7. Harvest summary of furbearers trapped in Skagit, Whatcom and Chelan counties, 1997–2009.	13
Table 8. Harvest summary of small game for Skagit, Whatcom, and Chelan counties, 1997–2013.	14

Appendices

	Page
Appendix A. General deer harvest (all methods) for GMUs 426 Diablo and 301/244 Clark, WDFW Region, and Statewide, 1997–2013.	A-1
Appendix B. General elk harvest (all methods) for GMUs 301/244 Clark, 418 Nooksack, 300/243 Manson, 426 Diablo and 437 Sauk, WDFW Region, and Statewide, 1997–2013.	B-1
Appendix C. Black bear harvest (all methods) for GMUs, BBMUs, and Statewide, 1997–2013.....	C-1
Appendix D. Cougar harvest (all methods) for GMU’s, 426 Diablo and 301/244 Clark, CMUs 3 and 5, and Statewide, 1997–2013.....	D-1
Appendix E. Mountain goat harvest (all methods) from GMUs adjacent to NOCA for years information was available, 1948–2013.....	E-1
Appendix F. Summary of furbearer CITES pelt sealing reports from Skagit, Whatcom, Chelan Counties, Region and Statewide, 1997–2008.	F-1
Appendix G. Harvest summary of furbearers (trapping) from Skagit, Whatcom and Chelan counties for years data were available, 1997–2009.	G-1
Appendix H. Harvest summary of small game from Skagit, Whatcom and Chelan counties, 1997–2013.	H-1

Executive Summary

North Cascades National Park Complex, Washington contains two National Recreation Areas (Ross Lake and Lake Chelan National Recreation Areas) where hunting is allowed. Little is known about the population status of big game species in the park complex such as mule deer (*Odocoileus hemionus*), black-tailed deer (*Odocoileus hemionus columbianus*), white-tailed deer (*Odocoileus virginianus*), Rocky Mountain elk (*Cervus elaphus nelsoni*), black bear (*Ursus americanus*), cougar (*Puma concolor*), and mountain goat (*Oreamnos americanus*). Information is also limited regarding the population status of furbearers to include bobcat (*Lynx rufus*), northern river otter (*Lontra canadensis*), American beaver (*Castor canadensis*), coyote (*Canis latrans*), American marten (*Martes americana*), American mink (*Neovison vison*), muskrat (*Ondatra zibethicus*), raccoon (*Procyon lotor*), Western spotted skunk (*Spilogale gracilis*), striped skunk (*Mephitis mephitis*), weasels (*Mustela erminea* and *Mustela frenata*) and various waterfowl and upland game bird species. This lack of information has raised concern over possible harvest impacts to game populations in the park complex and whether these populations are sustainable at current harvest levels.

Data were compiled and summarized from available historical harvest reports as obtained directly from Washington Department of Fish and Wildlife (WDFW) files and associated website. Data for some species, such as mountain goat, were available for most years dating back to 1948. Data for other species were incomplete or missing completely for some years and were most consistent from 1997–2013. For most species only general recreational harvest numbers were summarized.

For some big game species, such as deer, cougar, and black bear, harvest reports were summarized in this document for only those Game Management Units (GMUs) that were within the two National Recreation Areas of the park complex. This included GMUs 426 Diablo and 301/244 Clark. For some species that are known to seasonally migrate to and from the park complex, such as elk, data were summarized from GMUs that were not only within the park complex, but also those that were adjacent, but outside of park boundaries. This included GMUs 437 Sauk, 418 Nooksack, and 243 Manson. There are no hunting units for mountain goats within the park complex. However, 19 goat harvest units adjacent to the park complex were summarized where hunting pressure and movements of goats may influence populations in the park.

Harvest reports for furbearers and other small game have been historically reported at the county level, rather than the GMU level. Trapping and hunting harvest reports of small game were summarized for Skagit, Whatcom and Chelan counties, since these counties extend into the two National Recreation Areas of the park complex.

Harvest numbers summarized for GMUs 426 Diablo and 301/244 Clark that extend into the two National Recreation Areas of the park complex appear to represent a small fraction of harvest relative to the respective WDFW regional harvest numbers. For example, general deer harvest in GMU 426 Diablo represented 0.57 % of total general harvest for Region 4 and general deer harvest in GMU 301/244 Clark represented 0.49% of total general deer harvest for Region 2 for years 1997–2013. Specific concerns regarding how harvest information is collected and reported are identified and recommendations made for continued harvest summary assessments.

Acknowledgments

Washington Department of Fish and Wildlife (WDFW) maintain harvest records for all hunting units and harvested species in the state of Washington. Much gratitude to M. Davison, J. Bohannon, P. Debruyne, W. Allen and D. Volsen for providing these data and their insight on harvest numbers in the Ross Lake and Lake Chelan National Recreation Areas. Thanks to A. Braaten, North Cascades National Park Complex, for providing maps used in this report. Thanks also to F. Yaborough, J. Ransom, and R. Rochefort for offering review and providing helpful comments on previous drafts. Funding for this project was provided through Seattle City Light as part of the Skagit River Hydroelectric Project No. 553 Settlement Agreement.

Introduction

The fundamental purpose of the national park system begins with a mandate to conserve park resources and values, and provide for visitor enjoyment of these resources (National Park Service 2006). One important element of park resources includes wildlife and the processes and conditions that sustain them. Managing for these resources without impairment is important because it ensures future generations will have opportunities to enjoy the direct and intrinsic values that wildlife provides.

Hunting of wildlife by the public in a national park service unit is allowed only where it is specifically permitted by federal law (National Park Service 2006). Ross Lake National Recreation Area (ROLA) and Lake Chelan National Recreation Area (LACH) within North Cascades National Park Complex (NOCA) are among the few National Park Service units that do allow hunting. Hunting within the boundaries of these management areas is a recognized recreational activity under 36 Code of Federal Regulations 2.22 (Federal Register 1997) at times and locations defined by Washington Department of Fish and Wildlife (WDFW) regulations pursuant to RCW 77.12.240 (Washington State Legislature 2008). The trapping of furbearing animals in Washington is also governed by regulations set by WDFW. Trapping is not mandated and therefore is not allowed in the two National Recreation Areas (NRAs) of the park complex (Public Law 90-544).

As mandated by the Washington State Legislature (RCW 77.04.012), "... the department shall preserve, protect, perpetuate, and manage the wildlife..."; "the department shall conserve the wildlife... in a manner that does not impair the resource..."; and "The commission shall attempt to maximize the public recreational... hunting opportunities of all citizens, including juvenile, disabled, and senior citizens." It is this mandate that sets the overall policy and direction for managing hunted wildlife.

The National Park Service is interested in whether wildlife species, primarily big game species including mule deer (*Odocoileus hemionus*), black-tailed deer (*Odocoileus hemionus columbianus*), white-tailed deer (*Odocoileus virginianus*), principally Rocky Mountain elk (*Cervus elaphus nelsoni*), mountain goat (*Oreamnos americanus*), black bear (*Ursus americanus*), and cougar (*Puma concolor*) are being hunted at sustainable levels within the two NRAs of the park complex. Limited information on the status of furbearers and small game species in the park complex also prompts similar sustainability questions. There are concerns that NOCA management may need to take a more active role in co-management with WDFW of hunting and reporting of harvest in the NRAs. In order to address these concerns it first becomes necessary to compile and examine the historical harvest data within or adjacent to the two NRAs. This document summarizes available harvest data for big and small game species in Game Management Units (GMUs) and counties (in the case of small game) that fall within or are adjacent to the two NRAs of the park complex.

Study Area

The Washington Department of Fish and Wildlife has established and delineated GMUs covering the entire State of Washington and each is assigned to geographic management regions numbering 1–6. Each GMU is assigned a 3-digit number and a name that generally references some nearby geographic feature. This document summarizes hunter harvest activity for GMUs in Region 4 that are within or adjacent to ROLA including 426 Diablo, 450 Cascade, 418 Nooksack and 437 Sauk (Figure 1) and GMUs in Region 2 within or adjacent to LACH including 301/244 Clark and 243 Manson (Figure 2). In 2000 the Clark GMU changed from Region 3 to Region 2; thus, the switch in numbering from 301 to 244, herein referred to as 301/244 Clark GMU.

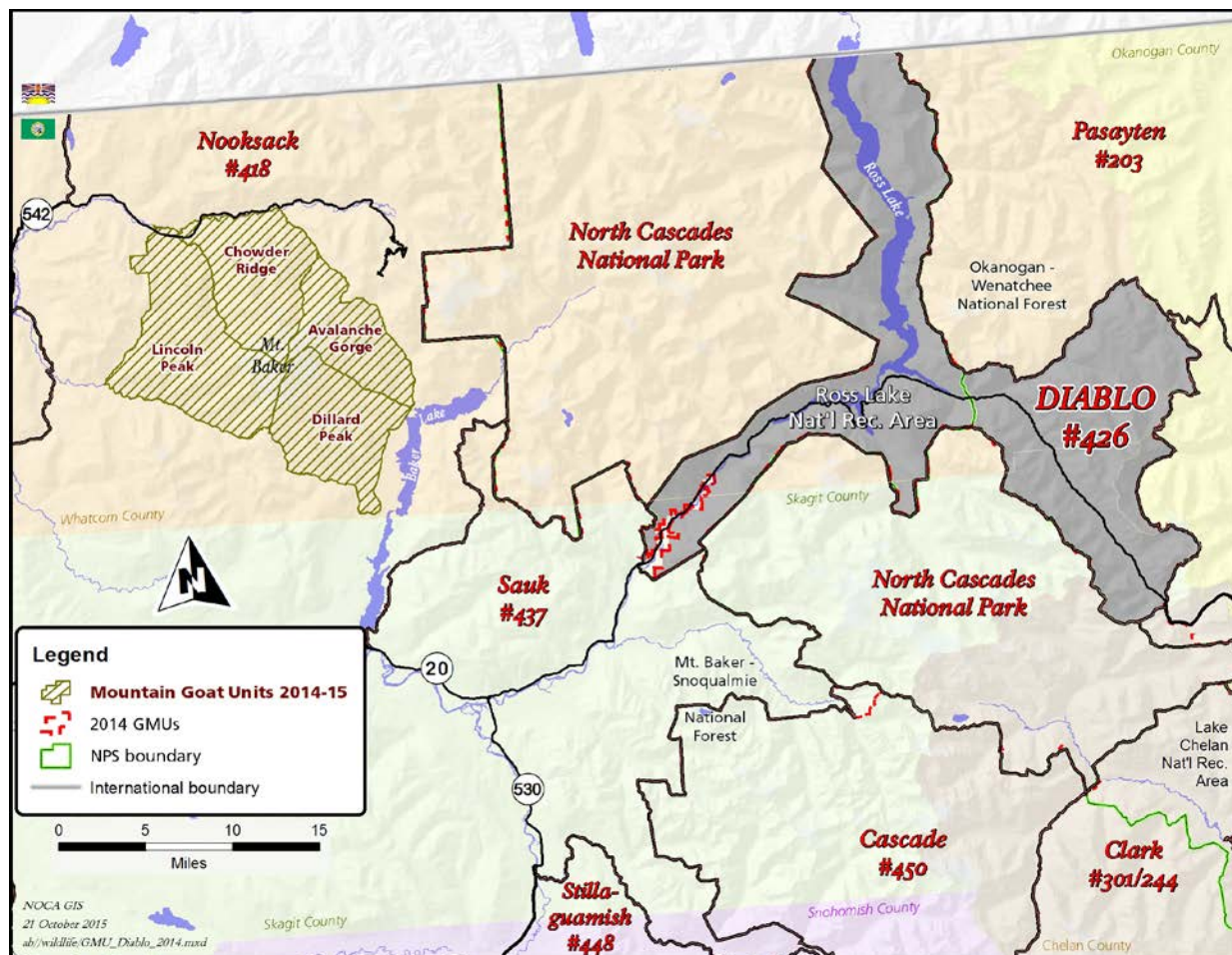


Figure 1. Location of Game Management Unit 426 Diablo and adjacent units relative to NOCA boundary.

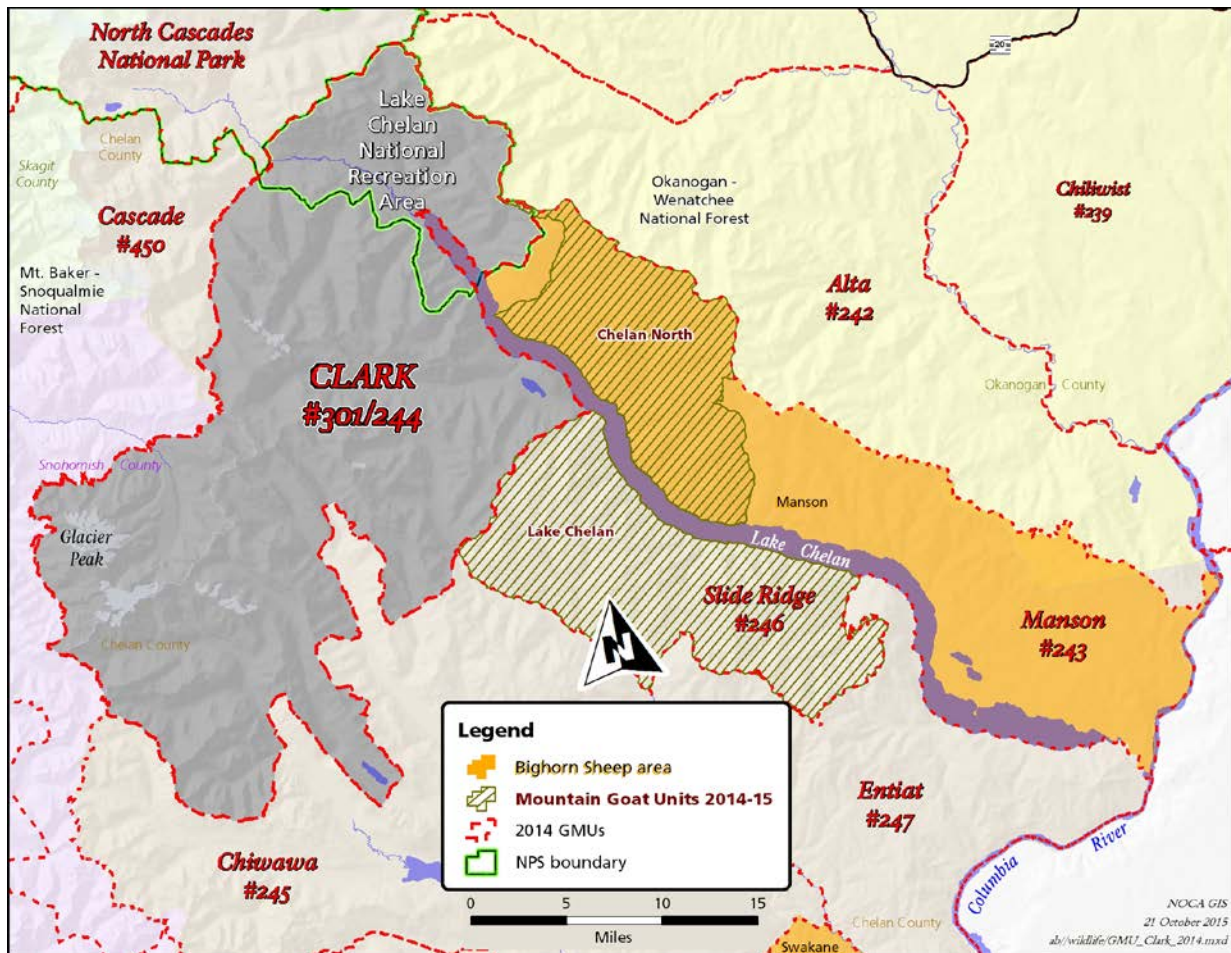


Figure 2. Location of Game Management Unit 301/244 Clark and adjacent units relative to NOCA boundary.

The primary GMUs that include land inside the park complex are 426 Diablo and 301/244 Clark. All other GMUs used in this summary report are those units that lie outside, but adjacent to the park complex. The 426 Diablo GMU comprises approximately 203,546 ac, of which about 114,689 ac (56.4%) lies within ROLA. The 301/244 Clark GMU encompasses a large geographic area, much of which is in the Glacier Peak Wilderness adjacent to the southwestern boundary of the park complex. The 301/244 Clark GMU comprises approximately 367,999 ac, of which about 60,695 ac (16.5%) lies within LACH.

Methods

Data

The information in this report comes from published and unpublished game harvest reports compiled by WDFW. Game harvest reports provide annual harvest statistics based on the information that hunters report. Due to personnel changes and methods of reporting there is considerable inconsistency over time and data for some years are either incomplete or missing completely. Some of these reports date back to 1948, particularly with mountain goat harvest. The most consistent harvest reports for deer, elk, black bear, cougar, furbearers, and small game are from 1997–2013 and this is the primary reporting time frame used in this document. These data were obtained directly from WDFW’s hunter harvest website <http://wdfw.wa.gov/hunting/harvest/> (WDFW 2015). Information obtained from WDFW’s interactive mapping website <http://apps.wdfw.wa.gov/gohunt/> (WDFW 2012) is perceived as being even more reliable (D. Volsen, pers. comm.). Other deer, bear and cougar harvest reports covering the period from 1976–2000 were obtained from archives at the respective WDFW Region 4 and 2 field offices. However, data prior to 1997 were not used in this report owing to numerous gaps and inconsistencies in how the data were collected and reported.

The method in which WDFW collected harvest data has changed over the years. For example, deer and elk surveys were changed from a telephone survey to a mandatory harvest report in 2001. It became apparent there was less compliance from telephone surveys; hence, harvest reports are thought to be less reliable prior to 2001 (D. Volsen, pers. comm.).

Also, shifts in WDFW management jurisdictions resulted in number changes for some GMUs over the years. For example, 301Clark GMU and 300 Manson GMU changed from Region 3 to Region 2 in 2000; thus, the switch in numbering to 244 and 243 respectively. Mountain goat management units have also changed names and boundaries over time.

Information reported in this summary includes data from the general recreational hunting season from all weapons including archery, muzzleloader, and modern firearm. There are also special permit hunts which make it possible to hunt antlerless deer or elk, for example, in special areas or during special times. Given the format of the WDFW dataset, especially in the earlier years, it was not always possible to determine the number of animals harvested via special permit in a particular GMU or Region. Harvest numbers from special permits were often reported at the statewide level or combined with the general harvest. Therefore harvest numbers for deer and elk from special permits were not included in the total harvest, but instead were compiled and stated as a percent of additional harvest where possible. Tribal hunts were not included in this report as this information was not available on the WDFW game harvest reports website. Harvest information are presented as total harvest, number of hunters, days hunted per hunter, total hunter days, hunter success, days to harvest and distributions of harvest by sex or age classifications.

There were no records found for spring special permit harvest of black bear within GMUs 426 Diablo and 301/244 Clark. This hunt is generally associated with spring timber damage and is controlled on an “as needed” basis, usually occurring on DNR and private timberlands.

In 2004, WDFW initiated a pilot program to harvest cougar with hounds via special permit. These additional harvest numbers were consistently available for each year the program was allowed and were included in the Cougar Management Unit (CMU) and statewide totals of this report.

Mountain goats are also hunted via special permits and hunting activity was gathered from the mandatory reports based on the dates of special permit hunt season, hunt boundary, and special restrictions. Harvest for this species was based on reports returned by hunters.

Mountain goat GMUs once extended into the boundaries of what is now NOCA prior to it becoming a national park in 1968. Since the inception of the park, GMU boundaries were altered to exclude hunting in the park complex. In some instances goats are known to use high elevation habitat in NOCA during the summer and tend to winter at lower elevations on U.S. Forest Service lands adjacent to the park (Jenkins et al. 2008). Hunting of goats in those areas just outside of the park complex may influence goat population numbers that migrate in and out of the park. Therefore, the goat management units summarized in this report are those that lie outside, but adjacent to NOCA boundaries.

Data were also summarized from small game species to include snowshoe hare (*Lepus americanus*), Eastern cottontail rabbit (*Sylvilagus floridanus*), Canada goose (*Branta canadensis*), chukar partridge (*Alectoris chukar*), mourning dove (*Zenaida macroura*), forest grouse including ruffed grouse (*Bonasa umbellus*), sooty grouse (*Dendragapus fluiginosus*) and spruce grouse (*Falcipennis canadensis*), gray or Hungarian partridge (*Perdix perdix*), ring-necked pheasant (*Phasianus colchicus*), quail including California quail (*Callipepla californica*) and mountain quail (*Oreotyx pictus*), common snipe (*Gallinago gallinago*), and various waterfowl, which were not recorded as species specific in WDFW game harvest reports. All small game species are reported by WDFW at the county level, rather than individual GMUs. Harvest data are included for Whatcom, Skagit, and Chelan counties. Harvest effort data were not available for small game species.

Trapping of furbearers and pelt sealing (those requiring a WDFW identification tag) reports have been traditionally compiled by WDFW at the broad county level, rather than at the more specific GMU level. Information was available and summarized in this report for the three counties having boundaries that extend into the park complex, to include Skagit, Whatcom and Chelan. Many furbearers rely on contiguous habitat, such that harvest adjacent to the two NRAs may influence furbearer populations that utilize habitat within the two NRAs. Considering these data could be important for future management.

Results

Harvest reports for deer, elk, black bear, cougar, mountain goat, furbearers, and small game species were compiled and summarized. Harvest reports for mountain goats date back to 1948, although data were missing for some years. The most consistent and reliable information for most species, other than goats, was for a 17-year period from 1997–2013. Summary tables are presented here and additional detailed harvest information is reported in the appendices.

Deer

Deer harvest summaries include only those GMUs that covered area within each respective NRA of the park complex. This includes summaries for all years that had available deer harvest information for GMU 426 Diablo in ROLA and GMU 301/244 Clark in LACH. The 426 Diablo GMU is a part of WDFW Region 4 management area. The 301/244 Clark GMU was in WDFW Region 3 from 1997–1999 and changed to be a part of WDFW Region 2 in 2000; hence, a subsequent unit number change from 301 to 244. Deer harvest numbers for 426 Diablo and 301/244 Clark GMUs, WDFW Regions 2, 3, 4 and statewide were consistently available for a 17-year period from 1997–2013 (Table 1). Results are reported for the general hunting season from all weapons (ie., modern firearm, archery, and muzzleloader) and includes mule, black-tailed, and white-tailed deer species, although not reported as individual taxon. More detailed deer harvest data for the 426 Diablo and 301/244 Clark GMUs are presented in Appendix A.

Table 1. Deer general harvest summary (all methods) from GMUs 426 Diablo and 301/244 Clark, WDFW Regions 2 and 4, and statewide, 1997–2013.

GMU, Region, State	No. Harvest Years	Antlered	Antlerless	Total	Avg. Annual Harvest
426 Diablo	17	184	17	201	11.8
Region 4	17	29350	6109	35459	2085.8
Statewide	17	467001	83622	550623	32389.6
301/244 Clark	17	239	96	335	19.7
Region 2	17	61137	6788	67925	3995.6
Statewide	17	467001	83622	550623	32389.6

A total of 201 deer were harvested from the 426 Diablo GMU for the 17-year period from 1997–2013. Annual harvest in the 426 Diablo GMU ranged from 2–20 animals with an average harvest of 11.8 deer per year. Harvest for the 17-year period consisted of 92% antlered and 8% antlerless animals. This compared to 83% antlered and 17 % antlerless for Region 4 and 85% antlered and 15% antlerless for statewide harvest during the same time period. Total deer harvest from the 426 Diablo GMU for the 17-year time period represented 0.57 % of Region 4 and 0.04% of statewide total harvest.

Deer special permits accounted for 7.6% additional average annual harvest from the 426 Diablo GMU, 5.5% additional average annual harvest at the Region 4 level, both for a 6-year period from 2008–2013 when data were available, and 10.6% additional average annual harvest statewide for the 17-year time period from 1997–2013.

A total of 335 deer were harvested from the 301/244 Clark GMU for the 17-year period from 1997–2013. Annual harvest in the 301/244 Clark GMU ranged from 0–35 animals with an average harvest of 19.7 deer per year. Harvest numbers from the 301/244 Clark GMU over the 17-year period consisted of 71% antlered and 29% antlerless animals. This compared to 90% antlered and 10% antlerless for Region 2 and 85% antlered and 15% antlerless at the statewide level for the same time period. Total deer harvest from the 301/244 Clark GMU represented 0.49% of Region 2 harvest and 0.06% of statewide total harvest for the 17-year time period.

Deer special permits accounted for no additional annual harvest from 301/244 Clark GMU, 20.6% additional average annual harvest at the Region 2 level, both for a 6-year period from 2008–2013 when data were available, and 10.6% additional average annual harvest statewide for the 17-year time period from 1997–2013.

Elk

Elk harvest numbers are summarized in this report from 1997–2013 to include GMUs 426 Diablo, 437 Sauk, 418 Nooksack, 301/244 Clark, and 243 Manson (Table 2). More detailed elk harvest information is presented in Appendix B. Results are reported for the general recreational hunting season (excludes tribal or state damage harvest) for both antlered and antlerless animals and collectively from all weapons (i.e., modern firearm, archery, and muzzleloader). Throughout the reported 17-year time period, not all years were open for general elk hunting in each GMU; however, apart from the 426 Diablo and 418 Nooksack GMUs, closures were generally the exception.

During the 17-year time period from 1997–2013, the 426 Diablo unit was open for a general elk hunt only in 2006. Only one elk tag was purchased and the unit was hunted for just two days. No successful harvest was reported.

The 418 Nooksack GMU lies to the northwest boundary of the park complex and contains the core elk population of the North Cascades formerly known as the Nooksack elk herd and more recently and herein referred to as the North Cascades herd. Elk within this herd at least occasionally use summer range near or within the park boundary to the northwest of upper Baker River, north of Sulphide Creek, and along the southern and western flanks of Mt. Shuksan. It is not completely clear to what extent animals of this herd utilize summer habitat within the park complex; however, given the close proximity of known elk activity to or within the park complex boundary, their propensity to harvest and the capacity for harvest information to be useful to park managers, the 418 Nooksack GMU was therefore included in this summary.

The 418 Nooksack GMU was open for general elk hunting 5 of 17 years during the period from 1997–2013. A total of 45 elk were harvested from the general season hunt during the 5 years. Harvest was comprised of 24% antlered and 76% antlerless animals. Annual harvest ranged from 0–36 animals with an average harvest of 9.0 elk per year. Total general elk harvest from the 418 Nooksack GMU for the 5 years represented 5.9% of harvest from Region 4 and 0.2% of harvest statewide for the same 5 years.

Table 2. Elk general harvest summary (all methods) from GMUs 426 Diablo, 437 Sauk, 418 Nooksack, 301/244 Clark, 243 Manson, WDFW Regions 2 and 4, and statewide, 1997–2013.

GMU, Region, State	No. Harvest Years	Antlered	Antlerless	Total	Avg. Annual Harvest
426 Diablo ¹	1	0	0	0	0.0
Region 4	1	55	36	91	91.0
Statewide	1	3782	1718	5500	5500.0
437 Sauk ²	10	43	38	81	8.1
Region 4	10	722	395	1127	112.7
Statewide	10	39839	16911	56750	5675.0
418 Nooksack ³	5	11	34	45	9.0
Region 4	5	489	268	757	151.4
Statewide	5	18558	8965	27523	5504.6
301/244 Clark ⁴	15	11	1	12	0.8
Region 2	15	2894	1434	4328	288.5
Statewide	15	54270	21247	75517	5034.5
243 Manson ⁵	11	4	1	5	0.5
Region 2	11	1513	602	2115	192.3
Statewide	11	42068	15388	59276	5388.7

¹GMU closed to general harvest for years 1997–2005 and 2007–2013.

²GMU closed to general harvest for years 1999–2000 and 2010–2013.

³GMU closed to general harvest for years 1997, 2001–2005, 2007–2009, and 2011–2013.

⁴GMU closed to general harvest for years 1998 and 2001.

⁵GMU closed to general harvest for years 1998–2000, and 2005–2007.

A portion of the 437 Sauk GMU lies adjacent to the most western tip of ROLA and was therefore included in this summary. This area could potentially be used as a connecting corridor for elk movement into ROLA and the 426 Diablo GMU and may have management implications if the North Cascades (Nooksack) herd were to expand its current range. The 437 Sauk GMU was open for general elk hunting 10 of 17 years during the period of 1997–2013. A total of 81 elk were harvested during the 10 years. Harvest was comprised of 53% antlered and 37% antlerless animals. Annual harvest ranged from 0–30 animals with an average harvest of 8.1 elk per year. Total general elk harvest from the 437 Sauk GMU for the 10 years represented 7.2% of harvest from Region 4 and 0.1% of harvest statewide for the same 10 years.

The 301/244 Clark GMU includes a portion of the Colockum elk herd, a small number of which are frequent visitors to the lower Stehekin Valley within LACH (NOCA files). Visual observations have been reported mainly during the fall, winter and spring months, but there have also been occasional reports during the summer. The 301/244 Clark GMU was open for general elk hunting 15 of 17 years during the period of 1997–2013. A total of 12 elk were harvested during the 15 years. Overall general harvest was comprised of 92% antlered and 8% antlerless animals. Annual harvest ranged from 0–3 animals with an average harvest of 0.8 elk per year. Total general elk harvest from the 301/244 Clark GMU for the 15 years represented 0.3% of harvest from Region 2 and 0.02% of harvest statewide for the same 15 years.

The 243 Manson GMU lies adjacent to the southern boundary of LACH. Although little is known about seasonal use patterns of the small elk population known to winter in the lower Stehekin Valley, anecdotal evidence suggests at least some members of this group may travel southward into the 243 Manson unit to access summer range (NOCA files); hence, this unit was included in this report. The 243 Manson GMU was open for general elk hunting 11 of 17 years during the period from 1997–2013. During the 11 years a total of 5 elk were harvested. Overall harvest was comprised of 80% antlered and 20% antlerless animals. Annual harvest ranged from 0–3 animals with an average harvest of 0.5 elk per year. Total general elk harvest from the 243 Manson GMU for the 11 years represented 0.2% of harvest from Region 2 and 0.01% of harvest statewide for the same 11 years.

Elk special permits accounted for 18.3% additional average annual harvest at the Region 4 level, 29.4% additional average annual harvest at the Region 2 level, both for a 6-year period from 2008–2013 when data were available, and 36.2% additional average annual harvest statewide for the 17-year time period from 1997–2013.

Black Bear

Black bear general season harvest was summarized in this report for GMU 301/244 Clark and GMU 426 Diablo from 1997–2013 (Table 3). A more detailed summary of bear harvest data is included in Appendix C. Special permits for spring bear hunts have not occurred in either of the NRA's and therefore are not included in this summary. In 1997, the 426 Diablo GMU was within WDFW Region 4 and the 301/244 Clark GMU was within Region 3. Beginning in 1998, harvest was reported at the Black Bear Management Unit (BBMU) level and not at the WDFW Regional level. Thereafter, the 426 Diablo GMU was assigned to BBMU3 and the 301/244 Clark GMU was assigned to BBMU6.

Table 3. Black bear general harvest summary for GMUs 426 Diablo and 301/244 Clark, BBUs 3 and 6, and statewide, 1997–2013.

GMU, BMU, State	No. Harvest Years	Male	Female	Total	Avg. Annual Harvest
426 Diablo	17	37	27	64	3.8
BBMU 3	17	2392	1213	3605	212.0
Statewide	17	16660	8526	25186	1481.5
301/244 Clark	17	75	43	118	6.9
BBMU 6	17	2313	1121	3434	202.0
Statewide	17	16660	8526	25186	1481.5

A total of 64 black bears were harvested from the 426 Diablo GMU for the 17-year period from 1997–2013. Harvest consisted of 58% male and 42% female bears. This compared to 66% male and 34% female for both the BBMU3 and statewide bear harvest for the same 17-year time period. Annual harvest from the 426 Diablo GMU ranged from 1–8 animals with an average harvest of 3.8 bears per year. Total bear harvest from the 426 Diablo GMU represented 1.8% of BBMU3 and 0.3% of statewide harvest for the 17-year period.

A total of 118 black bears were harvested from the 301/244 Clark GMU for the 17-year period from 1997–2013. Harvest consisted of 64% male and 36% female bears. This compared to 67% male and

33% female harvest for BBMU6 and 66% male and 34% female harvest at the statewide level for the same 17-year period. Annual harvest from the 301/244 Clark GMU ranged from 1–22 animals with an average harvest of 6.9 bears per year. Total bear harvest from the 301/244 Clark GMU represented 3.4% of BBMU3 harvest and 0.5% of statewide harvest for the 17-year period.

Cougar

Harvest of cougar was reported for a 17-year period from 1997–2013 for the 426 Diablo and 301/244 Clark GMUs, cougar management units (CMUs) 3-North Cascades and 5-East Cascades North, and statewide (Table 4). Additional cougar harvest details are included in Appendix D.

Table 4. Cougar harvest summary for GMUs 426 Diablo and 301/244 Clark, CMUs 3 and 5, and statewide, 1997–2013.

GMU, CMU State	No. Harvest Years	Male Harvest	Female Harvest	Unknown Harvest	Total Harvest	Avg. Annual Harvest	Other ¹	Combined Total
426 Diablo ²	8	0	0	0	0	0.0	0	0
CMU3	8	47	28	3	78	9.8	20	98
Statewide	8	559	803	74	1436	179.5	416	1852
301/244 Clark ³	9	0	3	0	3	0.3	0	3
CMU5	9	111	187	10	308	34.2	102	410
Statewide	9	632	899	78	1609	178.8	458	2067

¹Includes depredation, public safety removal, and pilot hound hunt.

²GMU closed to harvest for years 2005–2013.

³GMU closed to harvest for years 2005–2012; open in 2013.

The 426 Diablo GMU was open for cougar harvest from 1997–2004 and closed for harvest from 2005–2013; hence, 8 years of harvest during the 17-year reporting period. The 301/244 Clark GMU was open for cougar harvest from 1997–2004, closed from 2005–2012, and open again in 2013; hence, 9 years of harvest during the 17-year reporting period. Hunter effort and success records were not available for this species during this 17-year reporting period. Occasional cougar special permits allow for depredation and public safety removal harvest and in 2004 a pilot hound hunt was initiated. Cougar harvest numbers from these special permits were included in the GMU, CMU, and statewide combined total, but were counted separately from the general harvest.

During the 8 years the 426 Diablo GMU was open for general cougar hunting within the reporting period of 1997–2013, no cougars were successfully harvested. No additional special permit hunts were implemented for the 426 Diablo GMU during this time period. Cougar harvest from CMU3 for the 8-year period totaled 78 animals consisting of 60% males, 36% females, and 4% unknown. This compared to a statewide harvest of 1,436 animals representing 39% male, 56% female, and 5% unknown for the same 8-year period. General cougar harvest in CMU3 represented 5.4% of general statewide harvest, while total combined harvest in CMU3 represented 5.3% of statewide combined harvest during the 8-year period.

During the 9 years the 301/244 Clark GMU was open for cougar hunting within the reporting period of 1997–2013, one female cougar was harvested in 1999 and two females in 2013. No additional

special permit hunts were implemented for the 301/244 Clark GMU during this time period. For the 9-year period, the harvest of three cougars represented 1.0% of total harvest from CMU5 and 0.2% from statewide totals. Cougar harvest from CMU5 for the 9-year period totaled 308 animals consisting of 36% males, 61% females, and 3% unknown. This compared to a statewide harvest of 1,609 animals representing 39% male, 56% female, and 5% unknown for the same 9-year period. Total combined harvest in the 301/244 Clark GMU represented 0.7% of CMU5 combined harvest and 0.1% of statewide combined harvest over the 9 years. Total combined harvest for CMU5 over the 9 years represented 19.8% of statewide combined harvest during the same 9-year period.

Mountain Goat

Available mountain goat harvest reports date back to 1948. The numerous goat management units summarized in this report are those that lie outside, but adjacent to NOCA boundaries (Table 5). Some goat GMUs have changed names and boundaries over time. More recently, mountain goat unit 6407Avalanche Gorge boundary was changed in 2007. Additional goat harvest details are presented in Appendix E.

Table 5. Mountain goat harvest summary from GMUs adjacent to NOCA for years data were available, 1948–2013.

Goat GMU	Time Period	No. Harvest Years	Male Harvest	Female Harvest	Total Harvest	Avg. Annual Harvest
Cascade River	1948–1949	2	4	0	4	2.0
Chilliwack Creek	1953	1	1	1	2	2.0
Baker River	1953–1954	2	2	1	3	1.5
Skagit River ¹	1954–1985	31	157	175	332	10.7
Chelan	1954	1	1	5	6	6.0
North Lake Chelan ¹	1960–2013	25	177	196	373	14.9
Chelan North	2001–2008	8	3	1	4	0.5
Nooksack River	1963–1984	22	68	84	152	6.9
Stehekin River ¹	1962–1978	16	49	41	90	5.7
West Ross Lake ¹	1962–1968	7	16	17	33	4.7
East Ross Lake ¹	1962–1999	35	72	47	119	3.4
Baker Lake	1964–1985	22	117	107	224	6.4
Ruth Creek	1964–1995	32	84	95	179	5.6
Barometer Mountain	1974–1984	8	5	10	15	1.9
Avalanche Gorge ¹	1986–2013	15	17	8	25	1.7
Dillard Creek ¹	1986–2011	11	9	8	17	1.5
Lincoln Peak ¹	1986–2013	14	13	5	18	1.3
Chowder Ridge	1986–2013	16	11	7	18	1.1
Jack Mountain	1990–2000	11	4	5	9	0.8
Methow ¹	1991–2013	19	27	25	52	2.7
Mt Baker West	2009	1	1	1	2	2.0
Mt Baker East	2009	1	1	0	1	1.0
Totals			839	839	1678	

¹ In some years within the time periods listed the GMU was closed for goat hunting and no data were available.

Total goat harvest over a 66-year time period from 1948–2013 was 1,671 animals. Harvest consisted of 50.1% male and 49.9% female. The most significant harvest occurred over 25 years between 1960 and 2013 in the North Lake Chelan GMU, resulting in 373 animals harvested (average = 14.9 per year) consisting of 47.5% male and 52.5% female. Other significant harvest occurred in the Skagit River GMU over 31 years between 1954 and 1985, resulting in 332 animals harvested (average = 10.7 per year) consisting of 47.3% male and 52.7% female. Other substantial harvest has occurred in the Nooksack River, Ruth Creek, Baker Lake, East Ross Lake, and Stehekin River GMUs, totally 764 animals harvested (average = 21.8 per year) over a 35-year time period from 1962–1999.

Furbearers

Although trapping is not allowed in the two NRAs of the park complex, summaries of harvest are presented for counties adjacent to the NRA boundaries as an informational tool for park resource managers, since adjacent harvest may influence populations within the park complex. The WDFW Code requires that pelts of certain furbearers be tagged with WDFW identification tags (pelt sealing) shortly after the animals are harvested. This is done to gather harvest information and to comply with the requirements of the Convention on International Trade in Endangered Species (CITES). The harvest figures are drawn directly from the pelt sealing records. Pelt sealing records of bobcat and otter harvested in Skagit, Whatcom and Chelan counties were consistently available for a 12-year period from 1997–2008 (Table 6). At the time of this report, pelt sealing records for bobcat and otter harvest were not available beyond 2008, owing to a backlog resulting from a non-automated method of data entry. Information was not available for sex of each pelt origination. A more detailed breakdown of harvest for each year is included in Appendix F.

Table 6. Harvest summary of bobcat and otter CITES¹ pelt sealing reports from Skagit, Whatcom, and Chelan counties, 1997–2008.

County Region State	No. Harvest Years	Bobcat Hound	Bobcat Hunted	Bobcat Trapped	Bobcat Unk ²	Bobcat Total	Otter Hunted	Otter Trapped	Otter Unk ²	Otter Total
Skagit	12	0	88	42	0	130	3	178	0	181
Region 4	12	1	313	212	1	527	8	632	7	647
Statewide	12	53	3168	2393	54	5668	19	3580	20	3619
Whatcom	12	1	24	14	0	39	3	95	0	98
Region 4	12	1	313	212	1	527	8	632	7	647
Statewide	12	53	3168	2393	54	5668	19	3580	20	3619
Chelan	12	0	110	47	1	158	3	95	0	98
Region 2	12	6	627	365	10	1008	8	632	7	647
Statewide	12	53	3168	2393	54	5668	19	3580	20	3619

¹ Convention on International Trade in Endangered Species

² Unk = unknown method of harvest

A combined total of 130 bobcat pelts were sealed in Skagit County for the 12-year period from 1997–2008. Annual harvest ranged from 1–36 animals with an average harvest of 11.8 bobcats per year. Harvest methods consisted of 68% hunted and 32% trapped. No hound harvest was reported in

Skagit County for this 12-year period. Total bobcat harvest in Skagit County for the 12-year period represented 24.7% of Region 4 harvest and 2.3% of statewide harvest for the same period.

A combined total of 39 bobcat pelts were sealed in Whatcom County for the 12-year period from 1997–2008. Annual harvest ranged from 0–10 animals with an average harvest of 3.9 bobcats per year. Harvest methods consisted of 62% hunted, 36% trapped, and 2% hound. Total bobcat harvest in Whatcom County for the 12-year period represented 7.4% of Region 4 harvest and 0.7% of statewide harvest for the same period.

A total of 181 otter pelts were sealed in Skagit County for the 12-year period from 1997–2008. Annual harvest ranged from 0–38 with an average of 16.5 otters harvested per year. Harvest methods consisted of 1.7% hunted and 98.3% trapped. Total otter harvest in Skagit County for the 12-year period represented 27.9% of Region 4 harvest and 5.0% of statewide harvest for the same period.

A total of 98 otter pelts were sealed in Whatcom County for the 12-year period from 1997–2008. Annual harvest numbers ranged from 0–33 with an average of 9.8 animals harvested per year. Harvest methods consisted of 3.1% hunted and 96.9% trapped. Total otter harvest in Whatcom County for the 12-year period represented 15.1% of Region 4 harvest and 2.7% of statewide harvest for the same period.

A total of 29 otter pelts were sealed in Chelan County for the 12-year period from 1997–2008. Harvest numbers ranged from 0–10 with an average of 2.4 animals harvested per year. Harvest methods consisted of 100% trapped. Total otter harvest in Chelan County for the 12-year period represented 51.8% of Region 2 harvest and 0.8% of statewide harvest for the same period.

Additional furbearer trapping reports from Skagit, Whatcom and Chelan counties were available from 1997–2009 and summarized separately (Table 7). Data were not available for trapper reports beyond 2009 at the time of this writing, due to the backlog created from having to manually enter furbearer harvest numbers. Otter numbers in this table represent nuisance or controlled animals, where pelts were not sealed. These harvest numbers were in addition to CITES pelt sealings. Harvest effort for furbearers was not available at the time of this writing, although the process is evolving and more recently harvest effort is required from trappers. More detailed furbearer harvest information by year is presented in Appendix G.

Table 7. Harvest summary of furbearers trapped in Skagit, Whatcom and Chelan counties, 1997–2009.

County	Beaver	Coyote	Marten	Mink	Muskrat	Raccoon	Skunk	Weasel	Otter
Skagit	1586	29	10	63	368	105	16	0	223
Whatcom	784	19	0	313	598	238	22	2	68
Chelan	738	58	112	67	131	70	12	79	25
Totals	3108	106	122	443	1097	413	50	81	316

Beaver was the most frequently harvested furbearer in Skagit, Whatcom and Chelan counties for the 13-year period from 1997–2009. Beaver harvest comprised 66%, 38%, and 57% of total furbearer harvest for Skagit, Whatcom and Chelan counties respectively. Annual beaver harvest in Skagit,

Whatcom, and Chelan counties ranged from 8–299 (average = 122.0), 0–134 (average = 60.3), and 3–222 (average = 56.8) respectively.

Muskrat was the second most frequently harvested furbearer in Skagit, Whatcom, and Chelan counties for the 13-year period from 1997–2009. Muskrat harvest comprised 15%, 29%, and 10% of total furbearer harvest during the 13-year period for each county respectively. Annual muskrat harvest in Skagit, Whatcom, and Chelan counties ranged from 0–155 (average = 28.3), 0–350 (average = 46.0), and 0–64 (average = 10.1) respectively.

Other frequently harvested furbearers in descending order include otter, raccoon, and mink in Skagit County; mink, raccoon, and otter in Whatcom County; and marten, weasel, and raccoon in Chelan County. Less frequently harvested furbearers in descending order include coyote, skunk, and marten in Skagit County; skunk, coyote, and weasel in Whatcom County; and mink, coyote, otter, and skunk in Chelan County.

Small Game

Summaries of small game harvest were reported for Skagit, Whatcom, and Chelan counties from 1997–2013 (Table 8). Records were available for 14 small game species. A more detailed breakdown of harvest per year for each county is presented in Appendix H.

Table 8. Harvest summary of small game for Skagit, Whatcom, and Chelan counties, 1997–2013.

Game Species	Skagit 1997–2013	Avg. Annual Harvest	Whatcom 1997–2013	Avg. Annual Harvest	Chelan 1997–2013	Avg. Annual Harvest
Cottontail	6451	73.9	7748	455.8	1464	86.1
Pheasant	20337	1694.8	37319	2332.4	16298	958.7
Turkey	NA ¹	NA ¹	NA ¹	NA ¹	3	0.4
Quail	1332	78.4	1109	65.2	196795	11576.9
Forest Grouse	48146	2832.1	21177	1245.7	80614	4742.0
Snowshoe Hare	688	40.5	92	5.4	564	33.2
Jackrabbit	0	0.0	0	0.0	35	8.8
Snipe	3216	49.9	843	52.7	581	34.2
Dove	1476	93.5	514	30.2	56924	3348.5
Chukar	0	0.0	0	0.0	54573	3210.2
Hungarian/Gray	0	0.0	0	0.0	4802	282.5
Canada Goose	57479	3381.1	18783	1104.9	12593	740.8
Sept. Goose	6784	399.1	7119	434.2	1799	105.8
Duck	711788	44279.8	410573	24151.4	114774	6751.4

¹NA means information was not available.

Harvest numbers for duck were greater in all three counties than any other small game species over the 17-year period from 1997–2013. Duck harvest in Skagit, Whatcom, and Chelan counties comprised 83%, 81%, and 21% of all small game harvest in each county respectively.

The second most harvested small game species for Skagit County was Canada goose, comprising 7% of total harvest for the 17-year period. Other frequently harvested species in descending order include

forest grouse, pheasant, September goose, and cottontail, with each comprising 6%, 2%, 0.8%, and 0.8% of total small game harvest respectively.

The second most harvested small game species for Whatcom County was pheasant, comprising 7% of total harvest for the 17-year period. Other frequently harvested species in descending order include forest grouse, cottontail, September goose, and quail, with each comprising 4%, 2%, 1%, and 0.2% of total small game harvest respectively.

The second most harvested small game species for Chelan County was quail, comprising 7% of total harvest for the 17-year period. Other frequently harvested species in descending order include forest grouse, dove, chukar, and Canada goose, with each comprising 14.9%, 10.5%, 10.1%, and 2.3% of total small game harvest respectively.

No information was available for turkey harvest in Skagit and Whatcom counties for the 17-year period, suggesting the season was closed and harvest was not allowed during that period.

Discussion/Recommendations

Methods used by WDFW for collecting game harvest estimates have varied for the years reported in this document. Prior to 2001, harvest estimates were derived from a combination of techniques including mailed questionnaires, successful hunter report cards, and field check stations. The method used varied depending upon the harvest species being reported. During this period, survey results likely were influenced by non-response bias and inaccurate reporting by hunters. Thus, caution should be used in interpreting the accuracy of records for those years. In 2001, some major changes such as tagging and mandatory reporting were made in estimating harvest numbers for many big and small game animals. These changes are believed to reflect closer approximations of the total annual harvest for the respective game species. This report does not include poaching, harvest out of season, unlicensed hunters, and tribal harvest, which would also account for additional harvest above what is reported in this summary.

Specific locations of harvested animals were not reported in the WDFW dataset for the years included in this document. Rather, information was reported to include the entire GMU as the unit of measure. Thus, it is difficult to ascertain from the dataset whether harvest estimates are concentrated from a particular watershed or if harvest is more evenly dispersed across the GMU. For example, the 301/244 Clark GMU is large in size, covering approximately 114,689 ac, but only 16% of the land mass is actually within the boundaries of LACH. Despite this disproportionate division of land distribution, it is believed the majority of game harvest in the 301/244 Clark GMU actually occurs within the relatively small percentage of land within the LACH (E. Oswald, pers. comm.). By contrast, the 426 Diablo GMU is 60,695 ac in size, 66% of which lies within the boundaries of ROLA, yet it is believed the majority of game harvest occurs outside of the boundaries of ROLA (W. Allen, pers. comm.).

General recreational deer harvest from GMUs 426 Diablo and 301/244 Clark for the 17-year period summarized in this report represents 0.57% and 0.49% of total harvest for WDFW Regions 4 and 2 respectively and 0.04% and 0.06% of statewide harvest respectively. Reasons for this relatively low harvest rate may be related to several factors, which may include habitat quality, deer population density, and hunter access. There is a general lack of openings or clearings needed for deer browse within each NRA, which timber harvest practices, such as clear-cuts, outside of the respective NRAs offer more readily. Access is somewhat difficult within each of the NRAs and many hunters may prefer to hunt elsewhere where the terrain is less rugged, road density is higher, motorized vehicles are allowed, and logistics are less complex. At the time of this report, mule deer numbers appear to be stable to increasing throughout north-central and eastern Washington, while black-tailed numbers appear to be stable throughout their range with some notable population variability in localized areas (WDFW 2014). However, little is known about deer population numbers in the park complex and it is recommended that this need for information be investigated in the future.

The North Cascade (Nooksack) elk herd is the smallest of 10 herds in Washington and currently numbers about 1,248 elk (McCorquodale et al. 2013). This herd is currently not limited by the carrying capacity of elk habitat; thus, the herd is expected to grow with a population range objective

of 1,755–2,145 animals (WDFW 2014). Elk are currently uncommon in both ROLA and LACH of the park complex. For the 17-year period reported here, no elk have been harvested from the 426 Diablo GMU that lies within ROLA. However, it's possible the growing North Cascades (Nooksack) elk herd may at some point expand their range into the adjacent park complex more regularly, providing there is suitable habitat available. This concept is something for resource managers to be aware of and may warrant future monitoring.

Small groups of Rocky Mountain elk from the Colockum herd are known to occur in the lower Stehekin Valley of LACH, the most northern extent of their range (WDFW 2006), but no known harvest has occurred in LACH in the recent past (V. Gempko, pers. comm.). Elk harvest that occurs elsewhere within the 301/244 Clark and adjacent 243 Manson GMUs may influence elk population numbers in the Stehekin Valley. It may be beneficial for resource managers to monitor this small herd to determine seasonal movements, distribution and abundance.

Black bear harvest appears to be relatively low in both the 426 Diablo and 301/244 Clark GMUs, with harvest representing 1.8% and 3.4% of total harvest from BBMUs 3 and 6 respectively over a 17-year period from 1997–2013. Over the same time period, total bear harvest and average annual harvest in the 301/244 Clark GMU was nearly twice that of the 426 Diablo GMU, which may be explained, in part, by the disparity in land mass of each GMU, whereas the Clark unit is over a third larger. Another factor may be the high success rate of harvesting bear in the lower Stehekin Valley, due to the presence of an historic apple orchard that bears tend to favor in the fall. The relative ease and success of hunting in the vicinity has also raised concerns over known orphaned bear cubs in the area. This is a matter of interest to nearby residents and park managers and it is recommended that monitoring of harvest in this area be initiated to gain more information and offer solutions as necessary.

There has been very little cougar harvest in either the 426 Diablo or 301/244 Clark GMUs over a 17-year period from 1997–2013. During this period only three cougars were harvested in the 301/244 Clark unit and no cougar were successfully harvested in the 426 Diablo GMU. Little is known about cougar population numbers in the two NRAs and is recommended to be investigated in the future.

The viability of mountain goat populations in the North Cascades is a management concern. GMUs Skagit River, Nooksack River, Baker Lake, Ruth Creek, North Lake Chelan and East Ross Lake all reported between 113 and 385 goats harvested during the 46-year time frame from 1954–1999. All of these GMUs border the park complex and this level of hunting pressure may have had an adverse effect on goat populations within the complex. Implementing a rigorous scientific assessment of mountain goat populations in the park complex would be necessary to determine if the harvest levels are sustainable.

Mountain goat permits are currently quite restrictive. Beginning in 1999, with the exception of raffle and auction hunts, an individual is allowed to harvest only one mountain goat during their lifetime. Mountain goats are protected from hunting within the park complex, but park managers have concern about harvest in the outlying GMUs, in particular Avalanche and Chowder Ridge, which are adjacent to the northwest boundary of the park complex. Harvest in these two units probably have the greatest

influence on goat numbers in the adjacent area of the park complex, given their close proximity to the park and likelihood of movement back and forth between managed public lands, relative ease of travel corridors to and from the park, and an already estimated low number of goats in the park complex (Rice 2008). Avalanche Gorge and Chowder Ridge units were closed for hunting from 1996–2006, but have more recently been reopened to harvest from 2007–2013. It is recommended to closely monitor goat harvest reports from these two GMUs in the future.

Data from small game and furbearer harvest reports were available only at the county level. The current WDFW reporting format does not include exact locations of each harvested animal within each respective county. Anecdotal evidence suggests there is very little harvest of small game species that actually occurs within the NRAs of the park complex (P. DeBruyn, pers. comm.). Further, since trapping is not allowed in the NRAs, specific harvest location is of a lesser concern, although some furbearer home range territories may extend into the NRAs and outside harvest may influence populations within the respective NRA, especially along the perimeter of management boundaries.

In addition, some small game species harvested in the respective counties of Whatcom, Skagit and Chelan are considered non-native to Washington (e.g., ring-necked pheasant, chukar, gray partridge, mountain quail, California quail, wild turkey, eastern cottontail). Although the introduction of pheasants and other upland game birds has largely been considered positive by state wildlife agencies, recreationists and local economies, they are not without some adverse ecological effects. However, other than a few rare occurrence records of California quail in the lower Stehekin Valley of LACH, there are currently no occurrence records of other non-native game species in either of the two NRA's within the park complex; hence it is purported that no hunting of these species currently occurs within the two NRA's. This may be something for park resource managers to monitor in the future as potential range expansions and population dynamics shifts for some species.

It is important to note that harvest estimates reported in this document are indices of harvest trends and not to be interpreted as indices of population trends. Harvest numbers are influenced by game population levels, hunter effort, hunting regulations, unusual weather conditions and the price of pelts in the case of furbearers. Hunter numbers, license sales, and license fees can also have major influence on harvest.

This report presents a summary of raw data intended to inform resource managers and other interested parties of historical harvest numbers of big and small game species in and adjacent to the park complex. This summary report is not designed to draw major conclusions and recommendations without deferring to more rigorous formal analyses.

Literature Cited

- Federal Register. 1997. The Code of Federal Regulations, Title 36 – Parks, Forests and Public Property. U.S. Government Printing Office, Washington, D.C.
- Jenkins, K., K. Beirne, J. Schaberl, P. Happe, and C. Rice. 2008. Seasonal distribution and aerial surveys of mountain goats in Mount Rainier, North Cascades and Olympic National Parks, Washington. U.S. Geological Survey Open-File Report 2011–1107. U.S. Geological Survey, Reston, Virginia.
- McCorquodale, S. M., S. M. Knapp, M. A. Davison, J. S. Bohannon, C. D. Danilson, and W. C. Madsen. 2013. Mark-resight and sightability modeling of a western Washington elk population. *Journal of Wildlife Management* 77:359–371.
- National Park Service. 2006. Management Policies. U.S. Department of the Interior, National Park Service. U.S. Government Printing Office, Washington, D.C.
- Rice, C. G. 2008. Status of mountain goats in Washington. Unpublished report. Washington Department of Fish and Wildlife, Olympia, Washington.
- Washington Department of Fish and Wildlife (WDFW). 2006. Colockum elk herd plan. Wildlife Program, Washington Department of Fish and Wildlife, Olympia, Washington.
- Washington Department of Fish and Wildlife (WDFW). 2012. Go Hunt 2001–2012. Wildlife Management Program, Washington Department of Fish and Wildlife, Olympia, Washington. Available at: <http://apps.wdfw.wa.gov/gohunt/> (accessed 22 June 2015).
- Washington Department of Fish and Wildlife (WDFW). 2014. Game management plan, July 2015–June 2021. Washington Department of Fish and Wildlife, Olympia, Washington.
- Washington Department of Fish and Wildlife (WDFW). 2015. Game harvest reports 1997–2013. Wildlife Management Program, Washington Department of Fish and Wildlife, Olympia, Washington. Available at: <http://wdfw.wa.gov/hunting/harvest/> (accessed 22 June 2015).
- Washington State Legislature. 2008. Revised Code of Washington, Title 77, Chapter 12, Section 240. Olympia, WA. Available at: <http://apps.leg.wa.gov/rcw/default.aspx?cite=77.12.240> (accessed 22 June 2015).

Appendix A. General deer harvest (all methods) for GMUs 426 Diablo and 301/244 Clark, WDFW Region, and Statewide, 1997–2013.

Table A-1. Deer harvest for GMU 426 Diablo, WDFW Region 4, and Statewide, 1997–2013.

Year	GMU, Region, Statewide	Antlered	Antlerless	Total Harvest	No. Hunters	Days per Hunter	Total Hunter Days	Hunter Success%	Days Harvest
1997	426 Diablo	3	0	3	97	2.4	228	3.0	76.0
	Region 4	2128	527	2655	15126	4.8	73751	17.6	27.8
	Statewide	25118	2944	28062	134199	6.7	908722	20.9	32.4
1998	426 Diablo	18	2	20	212	2.1	461	9.0	23.0
	Region 4	1773	529	2302	22675	4.1	93725	10.2	40.7
	Statewide	23672	3735	27407	149301	6.1	924423	18.4	33.7
1999	426 Diablo	7	0	7	110	5.4	595	6.0	85.0
	Region 4	1999	471	2470	15962	7.1	114019	15.5	46.2
	Statewide	27312	4567	31879	152840	9.4	1450784	21.0	45.5
2000	426 Diablo	2	0	2	117	3.1	374	18.0	18.7
	Region 4	1201	203	1504	9566	5.1	49442	15.7	32.9
	Statewide	32140	5271	37411	149971	6.3	949631	24.9	25.4
2001	426 Diablo	14	3	17	94	3.6	343	18.0	20.2
	Region 4	1464	291	1755	8212	5.4	44904	21.4	25.6
	Statewide	30824	5535	36359	150997	5.5	838393	24.1	23.1
2002	426 Diablo	14	2	16	87	3.3	284	18.4	17.8
	Region 4	1360	294	1654	7292	5.6	40991	23.0	24.8
	Statewide	28995	4973	33928	137921	6.0	836325	24.6	24.6
2003	426 Diablo	9	2	11	54	4.0	217	20.4	19.7
	Region 4	1367	291	1658	6985	5.4	37834	23.7	22.8
	Statewide	29182	5677	34859	133832	5.8	785710	26.0	22.5
2004	426 Diablo	17	0	17	80	4.6	371	21.2	21.8
	Region 4	1640	101	1741	8065	5.1	41153	21.6	23.6
	Statewide	33656	5703	39359	146411	5.6	828863	26.9	21.1
2005	426 Diablo	19	1	20	75	5.0	338	26.7	16.9
	Region 4	1367	275	1642	7011	5.3	37604	23.4	22.9
	Statewide	28684	5417	13410	135653	NA	NA	25.1	NA
2006	426 Diablo	12	1	13	77	5.2	400	16.9	30.8
	Region 4	1335	319	1654	6740	5.6	37463	24.5	22.6

Year	GMU, Region, Statewide	Antlered	Antlerless	Total Harvest	No. Hunters	Days per Hunter	Total Hunter Days	Hunter Success%	Days Harvest
2007	Statewide	26276	5836	32112	135195	NA	NA	23.8	NA
	426 Diablo	10	0	10	57	3.8	214	17.5	21.4
	Region 4	1451	265	1716	7279	5.7	41374	23.6	24.1
	Statewide	27445	5554	32999	139241	NA	NA	23.7	NA
2008	426 Diablo	7	0	7	NA	NA	NA	NA	NA
	Region 4	1623	416	2039	NA	NA	NA	NA	NA
	Statewide	25980	5601	31581	138137	NA	NA	22.9	NA
	426 Diablo	7	0	7	86	4.8	416	2	20.8
2009	Region 4	1697	391	2088	8939	5.2	47085	16.7	33.9
	Statewide	25753	5190	30943	131956	NA	NA	23.4	NA
	426 Diablo	18	1	19	57	3.9	224	23.5	20.2
	Region 4	1808	360	2168	8609	NA	44312	21.1	30.5
2010	Statewide	26460	4247	30707	126107	NA	NA	24.3	NA
	426 Diablo	12	1	13	57	4.4	253	37.6	9.8
	Region 4	1704	435	2139	9739	5.1	50099	18.5	37.6
	Statewide	22622	4016	26638	120835	NA	NA	22.0	NA
2011	426 Diablo	4	1	5	50	4.3	215	10.5	13.7
	Region 4	1747	471	2218	8926	5.4	48984	20.6	28.5
	Statewide	26208	4936	31144	11545	NA	NA	27.0	NA
	426 Diablo	11	3	14	49	3.6	181	20.7	24.4
2012	Region 4	1939	470	2409	8233	5.4	44993	26.7	26.6
	Statewide	26674	4420	31094	119277	NA	NA	26.1	NA
	Totals	426 Diablo	184	17	201				
	Region 4	29350	6109	35459					
2013	Statewide	467001	83622	550623					

NA means information was not available.

Table A-2. Deer harvest for GMU 301/244 Clark, WDFW Region 3/2, and Statewide, 1997–2013.

Year	GMU, Region, Statewide	Antlered	Antlerless	Total Harvest	No. Hunters	Days per Hunter	Total Hunter Days	Hunter Success%	Days Harvest
1997	301 Clark	22	3	25	263	4.4	1168	10.0	47
	Region 3	584	9	593	20301	4.3	89108	2.9	150.3
	Statewide	25118	2944	28062	134199	6.7	908722	20.9	32.4
1998	301 Clark	7	0	7	228	4.1	940	3.0	134
	Region 3	856	0	856	21213	3.5	75193	4.0	87.8
	Statewide	23672	3735	27407	149301	6.1	924423	18.4	33.7
1999	301 Clark	13	0	13	245	4.4	1101	5.0	85
	Region 3	1451	55	1506	21458	6.0	129367	7.0	85.9
	Statewide	27312	4567	31879	152840	9.4	1450784	21.0	45.5
2000	244 Clark	0	0	0	11	1.7	19	0.0	NA
	Region 2	4968	132	5100	26752	4.3	115905	19.1	22.7
	Statewide	32140	5271	37411	149971	6.3	949631	24.9	25.4
2001	244 Clark	15	0	15	149	4.28	638	10	42.5
	Region 2	4370	1081	5451	23370	4.5	104916	23.3	19.2
	Statewide	30824	5535	36359	150997	5.5	838393	24.1	23.1
2002	244 Clark	16	0	16	138	3.8	528	12.0	33
	Region 2	4793	1243	6036	26291	4.6	120558	23	20
	Statewide	28995	4973	33928	137921	6.0	836325	24.6	24.6
2003	244 Clark	16	0	16	106	4.2	449	15.0	28.1
	Region 2	4372	260	4632	22634	4.7	105605	20.0	22.8
	Statewide	29182	5677	34859	133832	5.8	785710	26.0	22.5
2004	244 Clark	19	1	20	102	3.8	388	20.0	19.4
	Region 2	5522	351	5873	28070	4.3	120286	21.0	20.5
	Statewide	33656	5703	39359	146411	5.6	828863	26.9	21.1
2005	244 Clark	35	0	35	128	4.0	510	27.3	14.6
	Region 2	4424	343	4767	23913	4.7	111666	19.9	23.4
	Statewide	28684	5417	13410	135653	NA	NA	25.1	NA
2006	244 Clark	22	0	22	78	4.0	348	28.2	15.8
	Region 2	3569	477	4046	21846	4.6	100158	18.5	24.8
	Statewide	26276	5836	32112	135195	NA	NA	23.8	NA
2007	244 Clark	22	0	22	128	4.2	532	17.2	24.2
	Region 2	3877	434	4321	24049	4.6	110655	18.0	25.6
	Statewide	27445	5554	32999	139241	NA	NA	23.7	NA

Year	GMU, Region, Statewide	Antlered	Antlerless	Total Harvest	No. Hunters	Days per Hunter	Total Hunter Days	Hunter Success%	Days Harvest
2008	244 Clark	24	1	25	NA	NA	NA	NA	NA
	Region 2	3082	483	3565	NA	NA	NA	NA	NA
	Statewide	25980	5601	31581	NA	NA	NA	NA	NA
2009	244 Clark	0	23	23	112	3.6	399	42.8	10.2
	Region 2	3991	311	4302	23747	3.9	94248	19.1	26.1
	Statewide	25753	5190	30943	131956	NA	NA	23.4	NA
2010	244 Clark	1	21	22	115	3.8	438	10.9	16.6
	Region 2	3646	397	4043	23513	4.2	100478	22.5	21.3
	Statewide	26460	4247	30707	126107	NA	NA	24.3	NA
2011	244 Clark	1	28	29	120	3.8	465	34.0	11.8
	Region 2	3565	342	3907	23213	5.1	120678	23.0	21.0
	Statewide	22622	4016	26638	120835	NA	NA	22.0	NA
2012	244 Clark	2	18	20	97	3.8	377	31.6	15.2
	Region 2	4143	464	4607	22253	4.2	95508	26.7	18.4
	Statewide	26208	4936	31144	11545	NA	NA	27.0	NA
2013	244 Clark	24	1	25	120	3.7	447	10.8	7.3
	Region 2	3924	406	4330	23491	4.2	99388	23.6	20.8
	Statewide	26674	4420	31094	NA	NA	NA	26.1	NA
Totals	244 Clark	239	96	335					
	Region 2	61137	6788	67925					
	Statewide	467001	83622	550623					

NA means information was not available.

Appendix B. General elk harvest (all methods) for GMUs 301/244 Clark, 418 Nooksack, 300/243 Manson, 426 Diablo and 437 Sauk, WDFW Region, and Statewide, 1997–2013.

Table B-1. Elk harvest for GMU 301/244 Clark, WDFW Region 3/2, and Statewide, 1997–2013.

Year	GMU, Region, Statewide	Antlered	Antlerless	Total Harvest	No. Hunters	Days Hunted per Hunter	Total Hunter Days	Hunter Success (%)	Days to Harvest
1997	301 Clark	3	0	3	20	2.0	39	15.0	13
	Region 3	917	387	1304	25872	5.2	135944	5.0	104.3
	Statewide	2586	1127	3713	59015	5.6	333915	6.3	89.9
1999	301 Clark	0	0	0	24	3.0	72	0.0	NA
	Region 3	1312	771	2083	35486	7.1	254261	5.9	122.1
	Statewide	3909	1787	5695	83487	7.7	645962	6.8	113.4
2002	244 Clark	0	0	0	6	3.7	22	0.0	NA
	Region 2	85	11	96	1626	4.6	7580	6.0	79.0
	Statewide	4338	209	6367	75172	5.9	447917	8.5	70.3
2003	244 Clark	1	0	1	12	3.5	42	8.0	42
	Region 2	62	11	73	1454	4.5	6599	5.0	90.4
	Statewide	4506	1758	6264	70097	5.8	406627	8.9	64.9
2004	244 Clark	0	0	0	3	2.7	8	0.0	NA
	Region 2	36	8	44	1646	4.8	7971	2.7	181.2
	Statewide	4290	1301	5591	77224	5.6	437999	7.2	78.3
2005	244 Clark	1	1	2	6	2.5	15	33.3	7.5
	Region 2	41	17	58	1335	3.8	5137	4.3	88.6
	Statewide	4419	2083	6502	69836	NA	NA	9.3	NA
2006	244 Clark	0	0	0	4	4.5	18	0.0	NA
	Region 2	50	20	70	1255	4.1	5230	5.6	74.7
	Statewide	3782	1718	5500	69772	NA	NA	7.9	NA
2007	244 Clark	0	0	0	13	3.1	41	0.0	NA
	Region 2	32	31	63	1326	4.4	5927	4.8	94.1
	Statewide	4012	1881	5893	71904	NA	NA	8.2	NA
2008	244 Clark	0	0	0	NA	NA	NA	NA	NA
	Region 2	66	22	88	NA	NA	NA	NA	NA
	Statewide	3554	1385	4939	70892	NA	NA	7.0	NA

Year	GMU, Region, Statewide	Antlered	Antlerless	Total Harvest	No. Hunters	Days Hunted per Hunter	Total Hunter Days	Hunter Success (%)	Days to Harvest
2009	244 Clark	0	0	0	4	7.0	28	0.0	NA
	Region 2	37	29	66	1369	4.3	5910	8.9	50.0
	Statewide	4124	1794	5918	70542	NA	NA	8.4	NA
2010	244 Clark	0	0	0	4	3.5	14	0.0	0
	Region 2	50	51	101	1274	4.1	5246	12.6	46.2
	Statewide	3454	1788	5242	66757	NA	NA	7.9	NA
2011	244 Clark	3	0	3	14	3.5	50	25.0	13.3
	Region 2	73	50	123	1564	4.1	6530	5.7	88.6
	Statewide	3483	1383	4866	64119	NA	NA	7.6	NA
2012	244 Clark	1	0	1	8	3.2	26	5.5	22.0
	Region 2	63	13	76	1262	4.2	5327	4.1	99.0
	Statewide	4261	1695	5956	60687	NA	NA	9.8	NA
2013	244 Clark	2	0	2	13	2.3	31	15.4	15.5
	Region 2	70	13	83	1612	4.1	6673	6.9	78.7
	Statewide	3552	1398	4950	62106	NA	NA	8.0	NA
Totals	244 Clark	11	1	12					
	Region 2	2894	1434	4328					
	Statewide	54270	21247	75517					

Table B-2. Elk harvest for GMU 418 Nooksack, WDFW Region 4, and Statewide, 1998–2010.

Year	GMU, Region, Statewide	Antlered	Antlerless	Total Harvest	No. Hunters	Days Hunted per Hunter	Total Hunter Days	Hunter Success	Days to Harvest
1998	418	6	30	36	178	8.2	1461	0.2	41.00
	Nooksack								
	Region 4	140	112	252	4317	38.1	164785	5.8	83.8
	Statewide	2894	1412	4306	70316	5.7	406562	6.1	94.4
1999	418	5	3	8	104	6.6	691	0.08	86
	Nooksack								
	Region 4	172	52	224	3631	5.8	21105	6.2	94.2
	Statewide	3909	1787	5696	83487	7.7	645962	6.8	113.4
2000	418	0	0	0	57	3.8	217	0.0	NA
	Nooksack								
	Region 4	60	40	100	1735	4.9	8505	5.8	
	Statewide	4519	2260	6779	86205	5.4	471080	7.9	69.3
2006	418	0	0	0	1	20	20	0.0	NA
	Nooksack								
	Region 4	55	36	91	1114	5.9	6591	8.2	72.4
	Statewide	3782	1718	5500	69772	NA	NA	7.9	NA
2010	418	0	1	1	1	1	1	100.0	0
	Nooksack								
	Region 4	62	28	90	1437	4.4	6363	19.1	38.3
	Statewide	3454	1788	5242	66757	NA	NA	7.9	NA
Totals	418	11	34	45					
	Nooksack								
	Region 4	489	268	757					
	Statewide	18558	8965	27523					

NA means information was not available.

Table B-3. Elk harvest for GMU 300/243 Manson, WDFW Region 3/2, and Statewide, 1997–2013.

Year	GMU, Region, Statewide	Antlered	Antlerless	Total Harvest	No. Hunters	Days Hunted per Hunter	Total Hunter Days	Hunter Success (%)	Days to Harvest
1997	300 Manson	3	0	3	24	0.6	16	12	5
	Region 3	917	387	1304	25872	5.3	135944	5.0	104.3
	Statewide	2586	1127	3713	59015	5.6	333915	6.3	89.9
2001	243 Manson	0	0	0	2	6.5	13	0.0	NA
	Region 2	54	7	61	1383	4.2	5815	4.4	95.3
	Statewide	3920	1550	5470	73234	5.8	425327	7.4	77.8
2002	243 Manson	0	0	0	16	4.7	75	0.0	NA
	Region 2	85	11	96	1626	4.6	7580	5.9	79.0
	Statewide	4338	209	6367	75172	5.9	447917	8.5	70.3
2003	243 Manson	0	1	1	12	4.5	54	8.0	54
	Region 2	62	11	73	1454	4.5	6599	5.0	90.4
	Statewide	4506	1758	6264	70097	5.8	406627	8.9	64.9
2004	243 Manson	0	0	0	19	4.9	94	0.0	0
	Region 2	36	8	44	1646	4.8	7971	2.7	181.2
	Statewide	4290	1301	5591	77224	5.6	437999	7.2	78.3
2008	243 Manson	0	0	0	NA	NA	NA	0.0	NA
	Region 2	66	22	88	NA	NA	NA	NA	NA
	Statewide	3554	1385	4939	70892	NA	NA	7.0	NA
2009	243 Manson	0	0	0	10	4.4	44	0.0	0
	Region 2	37	29	66	1369	4.3	5910	8.9	50.0
	Statewide	4124	1794	5918	70542	NA	NA	8.4	NA
2010	243 Manson	1	0	1	15	4.3	65	3.7	43
	Region 2	50	51	101	1274	4.1	5246	12.6	46.2
	Statewide	3454	1788	5242	66757	NA	NA	7.9	NA
2011	243 Manson	0	0	0	6	3.1	19	0.0	0
	Region 2	73	50	123	1564	4.1	6530	5.7	88.6
	Statewide	3483	1383	4866	64119	NA	NA	7.6	NA
2012	243 Manson	0	0	0	7	8.7	61	0.0	0
	Region 2	63	13	76	1262	4.2	5327	4.1	99.0
	Statewide	4261	1695	5956	60687	NA	NA	9.8	NA
2013	243 Manson	0	0	0	4		23	0.0	0

Year	GMU, Region, Statewide	Antlered	Antlerless	Total Harvest	No. Hunters	Days Hunted per Hunter	Total Hunter Days	Hunter Success (%)	Days to Harvest
	Region 2	70	13	83	1612	4.1	6673	6.9	78.7
	Statewide	3552	1398	4950	62106	NA	NA	8.0	NA
Totals	243 Manson	4	1	5					
	Region 2	1513	602	2115					
	Statewide	42068	15388	59276					

NA means information was not available.

Table B-4. Elk harvest for GMU 437 Sauk, WDFW Region 4, and Statewide, 1998–2009.

Year	GMU, Region, Statewide	Antlered	Antlerless	Total Harvest	No. Hunters	Days Hunted per Hunter	Total Hunter Days	Hunter Success (%)	Days to Harvest
1998	437 Sauk	0	0	0	114	8.5	970	0.0	NA
	Region 4	140	112	252	4317	4.8	21113	5.8	83.8
	Statewide	2894	1412	4306	70316	5.7	406562	6.1	94.4
2001	437 Sauk	1	4	5	96	8.9	856	5.0	171.2
	Region 4	41	30	71	1377	5.8	8106	5.2	114.2
	Statewide	3920	1550	5470	73234	5.8	425327	7.4	77.8
2002	437 Sauk	2	1	3	64		406	5.0	135.3
	Region 4	55	32	87	1109	6.0	6655	7.8	76.5
	Statewide	4338	2029	6367	75172	5.9	447917	8.5	70.3
2003	437 Sauk	1	0	1	9	3.0	27	11.0	27.0
	Region 4	50	24	74	875	5.9	5248	8.5	70.9
	Statewide	4506	1758	6264	70097	5.8	406627	8.9	64.9
2004	437 Sauk	4	0	4	22	3.0	66	18	16.5
	Region 4	52	28	80	1009	5.1	5243	7.9	65.5
	Statewide	4290	1301	5591	77224	5.6	437999	7.2	78.3
2005	437 Sauk	5	1	6	45	6.3	285	13.3	47.5
	Region 4	67	26	93	1041	5.2	5482	8.9	58.9
	Statewide	4419	2083	6502	69836	NA	NA	9.3	NA
2006	437 Sauk	1	5	6	53	7.2	386	11.3	64.3
	Region 4	55	36	91	1114	5.9	6591	8.2	72.4
	Statewide	3782	1718	5500	69772	NA	NA	7.9	NA
2007	437 Sauk	9	3	12	53	7.0	376	22.6	31.3
	Regions 4	68	38	106	1160	5.6	6572	9.1	62
	Statewide	4012	1881	5893	71904	NA	NA	8.2	NA
2008	437 Sauk	13	17	30	5	NA	NA	NA	NA
	Region 4	92	46	138	NA	NA	NA	NA	NA
	Statewide	3554	1385	4939	70,892	NA	NA	7.0	NA
2009	437 Sauk	7	7	14	84	9.2	781	16.7	55.8
	Region 4	102	23	125	1750	6.2	10857	9.0	67.4
	Statewide	4124	1794	5918	70542	NA	NA	8.4	NA
Totals	437 Sauk	43	38	81					
	Region 4	722	395	1127					

Year	GMU, Region, Statewide	Antlered	Antlerless	Total Harvest	No. Hunters	Days Hunted per Hunter	Total Hunter Days	Hunter Success (%)	Days to Harvest
	Statewide	39839	16911	56750					

NA means information was not available.

Table B-5. Elk harvest for GMU 426 Diablo, WDFW Region 4, and Statewide, 2006.

Year	GMU, Region, Statewide	Antlered	Antlerless	Total Harvest	No. Hunters	Days Hunted per Hunter	Total Hunter Days	Hunter Success (%)	Days to Harvest
2006	426 Diablo	0	0	0	1	2	2	0.0	NA
	Region 4	55	36	91	1114	5.9	6591	8.2	72.4
	Statewide	3782	1718	5500	69772	NA	NA	7.9	NA

Appendix C. Black bear harvest (all methods) for GMUs, BBMUs, and Statewide, 1997–2013.

Table C-1. Black bear harvest for GMU 301/244 Clark, BBMU 6-East Cascades, and Statewide, 1997–2013.

Year	GMU, BBMU, Statewide	Male	Female	Total Harvest	No. Hunters	Days Hunted per Hunter	Total Hunter Days	Hunter Success (%)	Days to Harvest
1997	301 Clark	2	4	6	105	4.1	431	6.0	72
	Region 3 ¹	94	42	136	2997	6.2	18670	5.0	137
	Statewide	546	298	844	11060	8.8	97426	7.6	115
1998	301 Clark	12	10	22	102	3.5	361	22.0	16
	BBMU6-E.Cascades	230	109	339	5661	6.8	38557	6.0	114
	Statewide	1157	645	1802	20891	10.3	216456	9.0	120
1999	301 Clark	11	2	13	143	3.1	449	9.0	35
	BBMU6-E.Cascades	108	34	142	11050	9.6	106157	1.0	748
	Statewide	757	349	1106	37033	12.9	481319	3.0	435
2000	244 Clark	0	1	1	89	2.7	243	1.0	243
	BBMU6-E.Cascades	87	33	120	9379	5.8	54846	1.0	457
	Statewide	777	371	1148	37401	7.9	296849	3.0	259
2001	244 Clark	1	1	2	44	3.9	170	4.5	85
	BBMU6-E.Cascades	138	73	211	5283	8.0	42408	4.0	201
	Statewide	919	512	1431	25141	9.1	230431	5.7	161
2002	244 Clark	1	0	1	26	4.6	120	3.8	120
	BBMU6-E.Cascades	142	67	209	5356	7.7	41302	3.9	197.6
	Statewide	1115	580	1695	24844	8.8	219428	6.8	129.5
2003	244 Clark	1	1	2	21	4.5	95	9.5	47.5
	BBMU6-E.Cascades	129	58	187	4768	7.6	36686	3.9	196.2
	Statewide	970	581	1551	22510	8.5	192544	6.9	124.1
2004	244 Clark	4	4	8	32	14	456	25	57
	BBMU6-E.Cascades	125	73	198	4664	7.3	34460	4.2	174
	Statewide	1084	556	1640	21573	8.6	186626	7.6	113.8
2005	244 Clark	1	1	2	26	4.4	115	7.7	57.5
	BBMU6-E.Cascades	114	52	166	4326	7.6	33293	3.8	200.6
	Statewide	915	383	1298	20558	8.3	172527	6.3	132.9
2006	244 Clark	3	1	4	27	3.8	103	27.0	25.8

Year	GMU, BBMU, Statewide	Male	Female	Total Harvest	No. Hunters	Days Hunted per Hunter	Total Hunter Days	Hunter Success (%)	Days to Harvest
2007	BBMU6-E.Cascades	148	101	249	4828	6.9	33738	5.2	135.5
	Statewide	1040	576	1616	21700	7.7	168237	7.4	104.1
	244 Clark	4	2	6	31	5.5	171	19.4	28.5
2008	BBMU6-E.Cascades	105	41	146	5204	6.4	33738	2.8	231.1
	Statewide	1052	472	1524	23468	7.1	168237	6.5	110.4
	244 Clark	12	6	18	40	3.7	151	45.0	8
2009	BBMU6-E.Cascades	181	96	277	5299	6.9	36628	5.0	132.2
	Statewide	1389	726	2115	26056	8.2	215032	8.0	101.7
	244 Clark	5	1	6	30	7	212	20.0	35
2010	BBMU6-E.Cascades	103	59	162	4517	7.0	31791	4.0	196.2
	Statewide	877	432	1309	23481	8.1	192347	6.0	146.9
	244 Clark	9	3	12	40	3.7	149	30.0	12
2011	BBMU6-E.Cascades	176	99	275	4669	6.5	30686	5.9	111.6
	Statewide	1207	691	1898	23788	7.7	185389	8.0	97.7
	244 Clark	1	0	1	39	4.6	180	2.6	180
2012	BBMU6-E.Cascades	137	68	205	4318	6.7	29230	4.7	142.6
	Statewide	1002	501	1503	21550	7.7	166814	7.0	111
	244 Clark	7	5	12	41	3.4	140	29.3	12
2013	BBMU6-E.Cascades	165	63	228	4373	6.6	29293	5.2	128.5
	Statewide	1054	504	1558	21245	7.5	161459	7.3	103.6
	244 Clark	1	1	2	22	3.2	72	9.1	36
Totals	BBMU6-E.Cascades	131	53	184	4549	6.8	31226	4.0	169.7
	Statewide	799	349	1148	21052	7.8	164954	5.5	143.7
	244 Clark	75	43	118					
	BBMU6-E.Cascades	2313	1121	3434					
	Statewide	16660	8526	25186					

Appendix C. Black bear harvest (all methods) for GMUs, BBMUs, and Statewide; 1997–2013 (continued).

Table C-2. Black bear harvest for GMU 426 Diablo, BBMU 3-North Cascades, and Statewide, 1997–2013.

Year	GMU, Region, Statewide	Male	Female	Total Harvest	No. Hunters	Days Hunted per Hunter	Total Hunter Days	Hunter Success (%)	Days to Harvest
1997	426 Diablo	4	4	8	53	2.2	118	15.0	15
	Region 4 ¹	108	46	154	1701	6.3	10780	9.0	70
	Statewide	546	298	844	11060	8.8	97426	7.6	115
1998	426 Diablo	2	4	6	115	2.8	324	5.0	54
	BBMU3 N Cascades	192	91	283	2948	6.6	19439	10.0	69
	Statewide	1157	645	1802	20891	10.3	216456	9.0	120
1999	426 Diablo	4	2	6	74	4.4	327	8.0	54
	BBMU3-N.Cascades	95	62	157	3273	10.0	32911	5.0	210
	Statewide	757	349	1106	37033	12.9	481319	3.0	435
2000	426 Diablo	0	5	5	83	3.6	296	6.0	59
	BBMU3-N.Cascades	118	51	169	3065	5.9	18258	6.0	108
	Statewide	777	371	1148	37401	7.9	296849	3.0	259
2001	426 Diablo	2	1	3	22	5.0	111	13.6	37
	BBMU3-N.Cascades	102	47	149	2147	8.6	18630	6.9	125
	Statewide	919	512	1431	25141	9.1	230431	5.7	161
2002	426 Diablo	3	1	4	30	13.3	204	13.3	51
	BBMU3-N.Cascades	119	68	187	2083	8.5	17728	9.0	94.8
	Statewide	1115	580	1695	24844	8.8	219428	6.8	129.5
2003	426 Diablo	1	2	3	22	3.8	83	13.6	27.7
	BBMU3-N.Cascades	105	64	169	1660	8.2	13634	10.2	80.7
	Statewide	970	581	1551	22510	8.5	192544	6.9	124.1
2004	426 Diablo	3	0	3	19	4.4	84	15.8	28
	BBMU3-N.Cascades	176	70	246	1626	7.9	12945	15.1	52.6
	Statewide	1084	556	1640	21573	8.6	186626	7.6	113.8
2005	426 Diablo	1	0	1	20	5	99	5	99
	BBMU3-N.Cascades	87	34	121	1465	8.5	12459	8.3	103
	Statewide	915	383	1298	20558	8.3	172527	6.3	132.9
2006	426 Diablo	1	0	1	26	4.7	123	3.8	123

Year	GMU, Region, Statewide	Male	Female	Total Harvest	No. Hunters	Days Hunted per Hunter	Total Hunter Days	Hunter Success (%)	Days to Harvest
2007	BBMU3-N.Cascades	279	171	450	4464	6.2	27757	10.1	61.7
	Statewide	1040	576	1616	21700	7.7	168237	7.4	104.1
	426 Diablo	3	0	3	13	6.6	86	23.1	28.7
2008	BBMU3-N.Cascades	153	44	197	1922	5.8	11325	10.2	57.5
	Statewide	1052	472	1524	23468	7.1	168237	6.5	110.4
	426 Diablo	1	3	4	21	3.9	83	19	21
2009	BBMU3-N.Cascades	254	162	416	2443	7.7	18835	17.0	45.3
	Statewide	1389	726	2115	26056		215032	8.0	101.7
	426 Diablo	4	1	5	28	3.6	102	18	20
2010	BBMU3-N.Cascades	99	31	130	1897	8.2	15590	7.0	119.9
	Statewide	877	432	1309	23481	8.1	192347	6.0	146.9
	426 Diablo	5	1	6	21	3.1	66	28.6	11
2011	BBMU3-N.Cascades	169	98	267	2224	7.6	17055	12	63.9
	Statewide	1207	691	1898	23788	7.7	185389	8.0	97.7
	426 Diablo	1	0	1	16	4.6	75	6.3	75
2012	BBMU3-N.Cascades	138	73	211	2040	7.2	14889	10.3	70.6
	Statewide	1002	501	1503	21550	7.7	166814	7.0	111
	426 Diablo	1	3	4	21	5.1	108	19	27
2013	BBMU3-N.Cascades	121	67	188	2002	7.4	14888	9.4	79.2
	Statewide	1054	504	1558	21245	7.5	161459	7.3	103.6
	426 Diablo	1	0	1	13	2.9	38	7.7	38
Totals	BBMU3-N.Cascades	77	34	111	1754	7.4	13093	6.3	118
	Statewide	799	349	1148	21052	7.8	164954	5.5	143.7
	426 Diablo	37	27	64					
Totals	BBMU3-N.Cascades	2392	1213	3605					
	Statewide	16660	8526	25186					
	426 Diablo								

¹No assigned BBMU at this time, therefore harvest numbers reported at the Regional level.

Appendix D. Cougar harvest (all methods) for GMU's, 426 Diablo and 301/244 Clark, CMUs 3 and 5, and Statewide, 1997–2013.

Table D-1. Cougar harvest for GMU 426 Diablo, CMU-3 North Cascades and Statewide, 1997–2013.

Harvest Year	GMU, CMU, Statewide	Female Harvest	Male Harvest	Harvest Unknown Harvest	Total Harvest	Depre- dation Female	Depre- dation Male	Depre- dation Unknown	Female PSR ¹	Male PSR	Unknown PSR	Pilot Hound Special Permit Female	Pilot Hound Special Permit Male	Combined Total
1997	426 Diablo	0	0	0	0	0	0	0	0	0	0			0
	CMU3 North Cascades	7	4	0	11	1	0	0	0	0	0			12
	Statewide	77	55	0	132	6	12	0	2	2	0			154
1998	426 Diablo	0	0	0	0	0	0	0	0	0	0			0
	CMU3 North Cascades	14	5	0	19	0	1	0	0	0	0			20
	Statewide	112	72	0	184	8	10	0	3	5	0			210
1999	426 Diablo	0	0	0	0	0	0	0	0	0	0			0
	CMU3 North Cascades	8	6	0	14	0	0	0	0	0	0			14
	Statewide	165	104	4	273	9	7	2	3	1	0			295
2000	426 Diablo	0	0	0	0	0	0	0	0	0	0			0
	CMU3 North Cascades	6	7	0	13	1	2	0	2	1	0			19
	Statewide ok	127	74	7	208	11	10	2	11	9	1			252
2001	426 Diablo	0	0	0	0	0	0	0	0	0	0			0
	CMU3 North Cascades	5	1	0	6	0	0	0	4	1	0			11
	Statewide	114	96	10	220	5	10	1	34	30	0			300
2002	426 Diablo	0	0	0	0	0	0	0	0	0	0			0
	CMU3 North Cascades	6	4	1	11	0	0	0	4	0	0			15
	Statewide	69	48	19	136	14	7	0	30	24	0			211
2003	426 Diablo	0	0	0	0	0	0	0	0	0	0			0
	CMU3 North Cascades	0	1	1	2	0	0	0	0	1	0			3
	Statewide	69	65	13	147	16	6	2	30	21	0			222
2004	426 Diablo	0	0	0	0	0	0	0	0	0	0	0	0	0
	CMU3 North Cascades	1	0	1	2	0	0	0	1	0	1	0	0	4
	Statewide	70	45	21	136	9	4	1	2	0	1	21	34	208
2005	426 Diablo	NA	NA	NA	NA	NA	NA	NA	NA	NA	NA	NA	NA	NA
	CMU3 North Cascades	1	0	1	2	0	0	0	0	1	0	0	0	3
	Statewide	53	55	21	129	1	9	1	1	3	0	23	35	202

Harvest Year	GMU, CMU, Statewide	Female Harvest	Male Harvest	Harvest Unknown Harvest	Total Harvest	Depre- dation Female	Depre- dation Male	Depre- dation Unknown	Female PSR ¹	Male PSR	Unknown PSR	Pilot Hound Special Permit Female	Pilot Hound Special Permit Male	Combined Total
2006	426 Diablo	NA	NA	NA	NS	NA	NA	NA	NA	NA	NA	NNA	NA	NA
	CMU3 North Cascades	0	4	1	5	0	0	0	1	1	0	0	0	7
	Statewide	63	65	18	146	6	3	1	3	3	0	19	19	200
2007	426 Diablo	NA	NA	NA	NA	NA	NA	NA	NA	NA	NA	NA	NA	NA
	CMU3 North Cascades	1	4	0	5	1	0	0	1	2	0	0	0	9
	Statewide	53	53	0	106	20	14	3	1	2	0	26	29	201
2008	426 Diablo	NA	NA	NA	NA	NA	NA	NA	NA	NA	NA	NA	NA	NA
	CMU3 North Cascades	4	1	0	5	0	0	0	1	1	0	0	0	7
	Statewide	83	52	4	139	8	6	0	6	11	1	9	8	188
2009	426 Diablo	NA	NA	NA	NA	NA	NA	NA	NA	NA	NA	NA	NA	NA
	CMU3 North Cascades	1	5	0	6	0	0	0	0	0	0	0	0	6
	Statewide	49	38	2	89	6	6	0	5	2	0	12	22	142
2010	426 Diablo	NA	NA	NA	NA	NA	NA	NA	NA	NA	NA	NA	NA	NA
	CMU 3 North Cascades	0	2	0	2	0	0	0	0	0	0	0	0	2
	Statewide	54	46	0	100	7	4	0	5	4	0	12	33	165
2011	426 Diablo	NA	NA	NA	NA	NA	NA	NA	NA	NA	NA	NA	NA	NA
	CMU3 North Cascades	0	0	0	0	0	0	0	0	0	0	0	0	0
	Statewide	47	52	6	105	1	6	2	3	1	1	0	3	122
2012	426 Diablo	NA	NA	NA	NA	NA	NA	NA	NA	NA	NA	NA	NA	NA
	CMU3 North Cascades	2	1	0	3	0	0	0	0	0	0	0	0	3
	Statewide	78	56	5	139	6	3	1	6	3	1	0	0	159
2013	426 Diablo	NA	NA	NA	NA	NA	NA	NA	NA	NA	NA	NA	NA	NA
	CMU3 North Cascades	1	2	0	3	0	0	0	0	0	0	0	0	3
	Statewide	96	73	4	173	7	15	0	6	2	2	0	2	207
Totals	426 Diablo	0	0	0	0	0	0	0	0	0	0	0	0	0
	CMU3 North Cascades	57	47	5	109	3	3	0	14	8	1	0	0	138
	Statewide	1379	1049	134	2562	140	132	16	151	123	7	122	185	3438

¹PSR means public safety removal.

NA means information was not available.

Table D-2. Cougar harvest for GMU 301/244 Clark, CMU-5, E. Cascades North, 1997–2013.

Harvest Year	GMU, CMU, Statewide	Female Harvest	Male Harvest	Unknown Harvest	Total Harvest	Depe- dation Female	Depe- dation Male	Depe- dation Unknown	Female PSR ¹	Male PSR	Unknown PSR	Pilot Hound Special Permit Female	Pilot Hound Special Permit Male	Combined Total
1997	301 Clark	0	0	0	0	0	0	0	0	0	0			0
	CMU5 E. Cascades N.	14	10	0	24	0	0	0	0	0	0			24
	Statewide	77	55	0	132	6	12	0	2	2	0			154
1998	301 Clark	0	0	0	0	0	0	0	0	0	0			0
	CMU5 E. Cascades N.	22	12	0	34	0	0	0	0	0	0			34
	Statewide	112	72	0	184	8	10	0	3	5	0			210
1999	301 Clark	1	0	0	1	0	0	0	0	0	0			1
	CMU5 E. Cascades N.	38	23	0	61	0	1	0	0	0	0			62
	Statewide	165	104	4	273	9	7	2	3	7	2			303
2000	244 Clark	0	0	0	0	0	0	0	0	0	0			0
	CMU5 E. Cascades N.	24	13	2	39	0	2	1	0	0	0			42
	Statewide	127	74	7	208	11	10	2	11	9	1			252
2001	244 Clark	0	0	0	0	0	0	0	0	0	0			0
	CMU5 E. Cascades N.	29	24	0	53	1	3	1	3	3	0			64
	Statewide	114	96	10	220	5	10	1	34	30	0			300
2002	244 Clark	0	0	0	0	0	0	0	0	0	0			0
	CMU5 E. Cascades N.	10	7	3	20	5	1	0	6	10	0			42
	Statewide	69	48	19	136	14	7	0	30	24	0			211
2003	244 Clark	0	0	0	0	0	0	0	0	0	0			0
	CMU5 E. Cascades N.	19	6	1	26	11	1	0	6	2	0			46
	Statewide	69	65	13	147	16	6	2	30	21	0			222
2004	244 Clark	0	0	0	0	0	0	0	0	0	0	0	0	0
	CMU5 E. Cascades N.	15	6	2	23	6	2	1	0	0	0	4	16	52
	Statewide	70	45	21	136	9	4	1	2	0	1	21	34	208
2005	244 Clark	NA	NA	NA	NA	NA	NA	NA	NA	NA	NA	NA	NA	NA
	CMU5 E. Cascades N.	12	10	1	23	1	2	0	0	0	0	6	13	45
	Statewide	53	55	21	129	1	9	1	1	3	0	23	35	202
2006	244 Clark	NA	NA	NA	NA	NA	NA	NA	NA	NA	NA	NA	NA	NA
	CMU5 E. Cascades N.	9	9	5	23	4	2	0	0	0	0	8	18	55
	Statewide	63	65	18	146	6	3	1	3	3	0	19	19	200

Harvest Year	GMU, CMU, Statewide	Female Harvest	Male Harvest	Unknown Harvest	Total Harvest	Depre- dation Female	Depre- dation Male	Depre- dation Unknown	Female PSR ¹	Male PSR	Unknown PSR	Pilot Hound Special Permit Female	Pilot Hound Special Permit Male	Combined Total
2007	244 Clark	NA	NA	NA	NA	NA	NA	NA	NA	NA	NA	NA	NA	NA
	CMU5 E. Cascades N	15	7	0	22	9	11	2	0	0	0	9	11	64
	Statewide	53	53	0	106	20	14	3	1	2	0	26	29	201
2008	244 Clark	NA	NA	NA	NA	NA	NA	NA	NA	NA	NA	NA	NA	NA
	CMU5, E. Cascades N	21	8	0	29	4	2	0	2	6	1	1	4	49
	Statewide	83	52	4	139	8	6	0	6	11	1	9	8	188
2009	244 Clark	NA	NA	NA	NA	NA	NA	NA	NA	NA	NA	NA	NA	NA
	CMU5, E. Cascades N.	6	1	0	7	1	2	0	0	0	0	5	6	21
	Statewide	49	38	2	89	6	6	0	5	2	0	12	22	142
2010	244 Clark	NA	NA	NA	NA	NA	NA	NA	NA	NA	NA	NA	NA	NA
	CMU5 E. Cascades N.	10	4	0	14	3	3	0	4	0	0	6	11	41
	Statewide	54	46	0	100	7	4	0	5	4	0	12	33	165
2011	244 Clark	NA	NA	NA	NA	NA	NA	NA	NA	NA	NA	NA	NA	NA
	CMU5 E. Cascades N.	6	5	1	12	0	1	0	1	0	0	0	1	15
	Statewide	47	52	6	105	1	6	2	3	1	1	0	3	122
2012	244 Clark	NA	NA	NA	NA	NA	NA	NA	NA	NA	NA	NA	NA	NA
	CMU5 E. Cascades N.	18	17	1	36	1	1	1	0	0	1	0	0	40
	Statewide	78	56	5	139	6	3	1	6	3	1	0	0	159
2013	244 Clark	2	0	0	2	0	0	0	0	0	0	0	0	2
	CMU5 E. Cascades N.	16	10	2	28	4	9	0	2	0	0	0	1	44
	Statewide	96	73	4	173	7	15	0	6	2	2	0	2	207
Totals	244 Clark	3	0	0	3	0	0	0	0	0	0	0	0	3
	CMU5 E. Cascades N.	284	172	18	474	50	43	6	24	21	2	39	81	740
	Statewide	1379	1049	134	2562	140	132	16	151	123	7	122	185	3438

¹PSR means public safety removal.

NA means information was not available.

Appendix E. Mountain goat harvest (all methods) from GMUs adjacent to NOCA for years information was available, 1948–2013.

Table E-1. Mountain goat harvest adjacent to NOCA from 1948–2013, as available.

Harvest Year	Hunt No.	GMU Name	Male Harvest	Female Harvest	Total Harvest	Total Goats Seen	Kids Seen	Hunter Success	Total Hunters	Hunter Days	Days to Harvest
1948	unk	Cascade River	2	0	2	13	NA	NA	NA	NA	NA
1949	unk	Cascade River	2	0	2	4	NA	NA	NA	NA	NA
1953	unk	Chilliwack Creek	1	1	2	18	NA	NA	NA	NA	NA
1953	unk	Baker River	2	0	2	5	NA	NA	NA	NA	NA
1954	unk	Baker River	0	1	1	NA	NA	NA	NA	NA	NA
1954	1	Skagit River	1	2	3	NA	NA	NA	NA	NA	NA
1955	1	Skagit River	4	6	10	50	NA	NA	NA	NA	NA
1956	1	Skagit River	2	1	3	9	NA	NA	NA	NA	NA
1957	1	Skagit River	10	8	18	279	NA	NA	NA	NA	NA
1958	1	Skagit River	4	6	10	70	NA	NA	NA	NA	NA
1959	1	Skagit River	5	8	13	226	NA	NA	NA	NA	NA
1961	1	Skagit River	16	9	25	123	NA	NA	NA	NA	NA
1962	1	Skagit River	8	6	14	86	NA	NA	NA	NA	NA
1963	1	Skagit River	12	8	20	125	NA	NA	NA	NA	NA
1964	1	Skagit River	11	11	22	129	NA	NA	NA	NA	NA
1965	1	Skagit River	10	14	24	166	NA	NA	NA	NA	NA
1966	1	Skagit River	7	7	14	55	NA	NA	NA	NA	NA
1967	1	Skagit River	8	8	16	NA	NA	NA	NA	NA	NA
1968	1	Skagit River	6	11	17	NA	NA	NA	NA	NA	NA
1969	1	Skagit River	3	6	9	NA	NA	NA	NA	NA	NA
1970	1	Skagit River	6	6	12	NA	NA	48	25	NA	NA
1971	1	Skagit River	2	4	6	78	22	6	27	NA	NA
1972	1	Skagit River	5	4	9	69	17	26	35	NA	NA
1973	1	Skagit River	4	3	7	84	29	23	30	NA	NA
1974	1	Skagit River	4	5	9	91	19	29	31	NA	NA
1975	1	Skagit River	2	4	6	71	19	23	26	NA	NA
1976	1	Skagit River	2	5	7	65	16	25	27	NA	NA
1977	1	Skagit River	3	6	9	100	21	28	32	NA	NA
1978	1	Skagit River	4	7	11	67	13	48	23	NA	NA

Harvest Year	Hunt No.	GMU Name	Male Harvest	Female Harvest	Total Harvest	Total Goats Seen	Kids Seen	Hunter Success	Total Hunters	Hunter Days	Days to Harvest
2003	6001	Chelan North	0	0	0	12	1	0	1	8	0
2004	6001	Chelan North	1	0	1	3	0	100	1	3	0
2005	6001	Chelan North	0	0	0	25	4	0	1	15	0
2006	6001	Chelan North	0	0	0	0	0	0	0	0	0
2007	6001	Chelan North	0	0	0	27	2		1	12	0
2008	6001	Chelan North	0	1	1	25	5	100	1	8	8
1963	24	Nooksack River	4	5	9	156	NA	NA	NA	NA	NA
1964	24	Nooksack River	6	3	9	182	NA	NA	NA	NA	NA
1965	24	Nooksack River	5	10	15	399	NA	NA	NA	NA	NA
1966	24	Nooksack River	9	3	12	133	NA	NA	NA	NA	NA
1967	24	Nooksack River	1	13	14	NA	NA	NA	NA	NA	NA
1968	24	Nooksack River	3	3	6	NA	NA	NA	NA	NA	NA
1969	24	Nooksack River	4	8	12	NA	NA	NA	NA	NA	NA
1970	24	Nooksack River	4	9	13	NA	NA	68.42	19	NA	NA
1971	24	Nooksack River	1	2	3	127	30	16	19	NA	NA
1972	24	Nooksack River	1	2	3	45	6	25	12	NA	NA
1973	24	Nooksack River	1	5	6	45	13	55	11	NA	NA
1974	24	Nooksack River	4	0	4	100	21	31	13	NA	NA
1975	24	Nooksack River	3	4	7	127	42	64	11	NA	NA
1976	24	Nooksack River	3	2	5	108	21	38	13	NA	NA
1977	24	Nooksack River	1	4	5	60	22	56	9	NA	NA
1978	24	Nooksack River	7	2	9	152	52	60	15	NA	NA
1979	24	Nooksack River	2	2	4	30	3	36	11	NA	NA
1980	24	Nooksack River	5	4	9	231	50	64	14	NA	NA
1981	24	Nooksack River	3	1	4	35	2	40	10	NA	NA
1982	24	Nooksack River	0	0	0	26	6	0	9	32	NA
1983	24	Nooksack River	1	2	3	43	8	60	5	18	NA
1984	24	Nooksack River	0	0	0	14	0	0	5	NA	NA
1962	21	Stehekin River	2	3	5	38	NA	NA	NA	NA	NA
1963	21	Stehekin River	4	0	4	8	NA	NA	NA	NA	NA
1965	21	Stehekin River	3	7	10	98	NA	NA	NA	NA	NA
1966	21	Stehekin River	5	4	9	45	NA	NA	NA	NA	NA
1967	21	Stehekin River	2	2	4	NA	NA	NA	NA	NA	NA
1968	21	Stehekin River	6	3	9	NA	NA	NA	NA	NA	NA
1969	21	Stehekin River	3	2	5	NA	NA	NA	NA	NA	NA

Harvest Year	Hunt No.	GMU Name	Male Harvest	Female Harvest	Total Harvest	Total Goats Seen	Kids Seen	Hunter Success	Total Hunters	Hunter Days	Days to Harvest
1970	21	Stehekin River	2	3	5	NA	NA	35.71	14	NA	NA
1971	21	Stehekin River	4	4	8	76	23	44	18	NA	NA
1972	21	Stehekin River	1	4	5	35	10	29	17	NA	NA
1973	21	Stehekin River	6	2	8	165	30	42	19	NA	NA
1974	21	Stehekin River	4	2	6	75	4	32	19	NA	NA
1975	21	Stehekin River	2	1	3	38	11	20	15	NA	NA
1976	21	Stehekin River	3	1	4	21	7	24	17	NA	NA
1977	21	Stehekin River	1	3	4	54	13	36	11	NA	NA
1978	21	Stehekin River	1	0	1	6	0	11	9	NA	NA
1962	20	West Ross Lake	0	1	1	4	NA	NA	NA	NA	NA
1963	20	West Ross Lake	0	3	3	15	NA	NA	NA	NA	NA
1965	20	West Ross Lake	5	7	12	60	NA	NA	NA	NA	NA
1966	20	West Ross Lake	5	0	5	11	NA	NA	NA	NA	NA
1967	20	West Ross Lake	4	3	7	NA	NA	NA	NA	NA	NA
1968	20	West Ross Lake	2	3	5	NA	NA	NA	NA	NA	NA
1962	19	East Ross Lake	2	1	3	18	NA	NA	NA	NA	NA
1963	19	East Ross Lake	1	4	5	13	NA	NA	NA	NA	NA
1965	19	East Ross Lake	2	3	5	32	NA	NA	NA	NA	NA
1966	19	East Ross Lake	4	0	4	7	NA	NA	NA	NA	NA
1967	19	East Ross Lake	1	1	2	NA	NA	NA	NA	NA	NA
1968	19	East Ross Lake	5	1	6	NA	NA	NA	NA	NA	NA
1969	19	East Ross Lake	3	1	4	NA	NA	NA	NA	NA	NA
1970	19	East Ross Lake	4	7	11	NA	NA	55	20	NA	NA
1971	19	East Ross Lake	4	3	7	71	11	50	14	NA	NA
1972	19	East Ross Lake	3	4	7	71	14	37	19	NA	NA
1973	19	East Ross Lake	1	1	2	35	7	13	16	NA	NA
1974	19	East Ross Lake	1	2	3	48	5	30	10	NA	NA
1975	19	East Ross Lake	1	0	1	4	0	25	4	NA	NA
1976	19	East Ross Lake	4	0	4	32	8	50	8	NA	NA
1977	19	East Ross Lake	0	0	0	5	2	0	8	NA	NA
1978	19	East Ross Lake	4	0	4	75	24	50	8	NA	NA
1979	19	East Ross Lake	3	1	4	19	6	36	12	NA	NA
1980	19	East Ross Lake	2	1	3	24	3	33	9	NA	NA
1982	19	East Ross Lake	1	1	2	41	10	34	6	19	NA
1983	19	East Ross Lake	2	1	3	28	7	38	8	48	NA

Harvest Year	Hunt No.	GMU Name	Male Harvest	Female Harvest	Total Harvest	Total Goats Seen	Kids Seen	Hunter Success	Total Hunters	Hunter Days	Days to Harvest
1985	6408	East Ross Lake	2	0	2	17	6	40	5	18	NA
1986	6408	East Ross Lake	2	1	3	27		50	6	21	NA
1987	6408	East Ross Lake	0	2	2	31	10	29	7	30	NA
1988	6408	East Ross Lake	2	0	2	22	6	33	6	39	NA
1989	6408	East Ross Lake	4	2	6	77	13	67	9	50	NA
1990	6408	East Ross Lake	1	1	2	23	4	25	8	48	NA
1991	6408	East Ross Lake	4	1	5	51	11	63	8	38	NA
1992	6408	East Ross Lake	3	2	5	21	3	56	9	62	NA
1993	6408	East Ross Lake	1	1	2	27	7	29	7	46	NA
1994	6408	East Ross Lake	1	0	1	27	5	13	8	59	NA
1995	6408	East Ross Lake	2	3	5	37	13	56	9	63	NA
1996	6408	East Ross Lake	2	2	4	55	18	40	10	82	NA
1997	6408	East Ross Lake	0	0	0	0	0	0.00	2	14	0
1998	6408	East Ross Lake	0	0	0	21	4	0.00	4	29	0
1999	6408	East Ross Lake	0	0	0	0	0	0	1	8	0
1964	23	Baker Lake	6	6	12	154	NA	NA	NA	NA	NA
1965	23	Baker Lake	8	3	11	88	NA	NA	NA	NA	NA
1966	23	Baker Lake	4	2	6	87	NA	NA	NA	NA	NA
1967	23	Baker Lake	5	7	12	NA	NA	NA	NA	NA	NA
1968	23	Baker Lake	10	9	19	NA	NA	NA	NA	NA	NA
1969	23	Baker Lake	3	4	7	NA	NA	NA	NA	NA	NA
1970	23	Baker Lake	4	7	11	NA	NA	55	20	NA	NA
1971	23	Baker Lake	6	7	13	409	147	68	19	NA	NA
1972	23	Baker Lake	4	3	7	120	40	33	21	NA	NA
1973	23	Baker Lake	6	2	8	196	35	50	20	NA	NA
1974	23	Baker Lake	3	4	7	250	39	47	17	NA	NA
1975	23	Baker Lake	5	4	9	256	77	50	18	NA	NA
1976	23	Baker Lake	7	3	10	245	64	43	23	NA	NA
1977	23	Baker Lake	10	5	15	266	82	65	23	NA	NA
1978	23	Baker Lake	4	2	6	328	77	30	20	NA	NA
1979	23	Baker Lake	7	6	13	531	93	48	27	NA	NA
1980	23	Baker Lake	5	5	10	447	132	42	24	NA	NA
1981	23	Baker Lake	2	8	10	384	84	40	25	NA	NA
1982	23	Baker Lake	5	4	9	237	54	43	21	115	NA
1983	23	Baker Lake	6	9	15	312	75	71	21	70	NA

Harvest Year	Hunt No.	GMU Name	Male Harvest	Female Harvest	Total Harvest	Total Goats Seen	Kids Seen	Hunter Success	Total Hunters	Hunter Days	Days to Harvest
1984	23	Baker Lake	7	7	14	209	47	65	23	NA	NA
1985	23	Baker Lake	0	0	0	74	23	0	4	18	NA
1964	4	Ruth Creek	5	6	11	102	NA	NA	NA	NA	NA
1965	4	Ruth Creek	4	9	13	92	NA	NA	NA	NA	NA
1966	4	Ruth Creek	2	5	7	40	NA	NA	NA	NA	NA
1967	4	Ruth Creek	3	2	5	NA	NA	NA	NA	NA	NA
1968	4	Ruth Creek	4	5	9	NA	NA	NA	NA	NA	NA
1969	4	Ruth Creek	0	5	5	NA	NA	NA	NA	NA	NA
1970	4	Ruth Creek	4	5	9	NA	NA	50	18	NA	NA
1971	4	Ruth Creek	4	1	5	77	13	24	21	NA	NA
1972	4	Ruth Creek	1	0	1	47	9	5	20	NA	NA
1973	4	Ruth Creek	7	2	9	76	12	39	23	NA	NA
1974	4	Ruth Creek	2	5	7	206	51	33	21	NA	NA
1975	4	Ruth Creek	1	0	1	56	12	7	15	NA	NA
1976	4	Ruth Creek	2	10	12	144	37	54	22	NA	NA
1977	4	Ruth Creek	2	6	8	150	42	47	17	NA	NA
1978	4	Ruth Creek	5	3	8	86	7	38	21	NA	NA
1979	4	Ruth Creek	3	5	8	123	33	36	22	NA	NA
1980	4	Ruth Creek	3	3	6	122	16	32	6	NA	NA
1981	4	Ruth Creek	3	3	6	75	19	26	23	NA	NA
1982	4	Ruth Creek	2	4	6	70	20	40	15	91	NA
1983	4	Ruth Creek	2	2	4	37	5	27	15	94	NA
1984	4	Ruth Creek	2	0	2	42	8	17	12	NA	NA
1985	6401	Ruth Creek	0	3	3	48	13	30	10	46	NA
1986	6401	Ruth Creek	2	1	3	48	13	27	11	63	NA
1987	6401	Ruth Creek	3	2	5	73	18	56	9	65	NA
1988	6401	Ruth Creek	2	1	3	99	24	38	8	53	NA
1989	6401	Ruth Creek	3	2	5	54	14	50	10	38	NA
1990	6401	Ruth Creek	0	2	2	23	5	25	8	34	NA
1991	6401	Ruth Creek	2	0	2	16	2	29	7	42	NA
1992	6401	Ruth Creek	4	0	4	83	25	40	10	69	NA
1993	6401	Ruth Creek	4	1	5	42	5	50	10	28	NA
1994	6401	Ruth Creek	1	1	2	97	16	20	10	87	NA
1995	6401	Ruth Creek	2	1	3	27	11	75	3	19	NA
1974	31	Barometer Mountain	2	1	3	135	35	37	8	NA	NA

Harvest Year	Hunt No.	GMU Name	Male Harvest	Female Harvest	Total Harvest	Total Goats Seen	Kids Seen	Hunter Success	Total Hunters	Hunter Days	Days to Harvest
1975	31	Barometer Mountain	0	1	1	111	32	13	8	NA	NA
1976	31	Barometer Mountain	0	1	1	60	7	13	8	NA	NA
1977	31	Barometer Mountain	2	3	5	188	65	63	8	NA	NA
1978	31	Barometer Mountain	0	1	1	216	63	11	9	NA	NA
1980	31	Barometer Mountain	1	1	2	294	75	15	13	NA	NA
1981	31	Barometer Mountain	0	2	2	286	93	17	12	NA	NA
1984	31	Barometer Mountain	0	0	0	14	2	0	2	NA	NA
1986	6407	Avalanche Gorge	0	0	0	55	0	0	2	13	NA
1987	6407	Avalanche Gorge	3	0	3	115	35	60	5	25	NA
1988	6407	Avalanche Gorge	1	1	2	33	5	67	3	23	NA
1989	6407	Avalanche Gorge	2	0	2	96	20	40	5	25	NA
1990	6407	Avalanche Gorge	0	4	4	62	26	80	5	23	NA
1991	6407	Avalanche Gorge	0	0	0	2	0	0	1	9	NA
1992	6407	Avalanche Gorge	2	1	3	90	27	75	4	18	NA
1993	6407	Avalanche Gorge	2	2	4	86	27	80	5	20	NA
1994	6407	Avalanche Gorge	2	0	2	56	8	50	4	19	NA
1995	6407	Avalanche Gorge	2	0	2	34	2	50	4	21	NA
2007	6010	Avalanche Gorge	1	0	1	57	17	100	1	5	5
2008	6010	Avalanche Gorge	0	0	0	40	2	0	1	0	NA
2010	6010	Avalanche Gorge	1	0	1	27	7	100	1	4	4
2011	600	Avalanche Gorge	0	0	0	12	4	0	1	0	NA
2013	6004	Avalanche Gorge	1	0	1	22	0	50	2	14	14
1986	6406	Dillard Creek	1	0	1	47	7	33	3	4	NA
1987	6406	Dillard Creek	1	0	1	5	1	33	3	11	NA
1988	6406	Dillard Creek	1	2	3	58	19	75	4	23	NA
1989	6406	Dillard Creek	0	3	3	31	10	60	5	28	NA
1990	6406	Dillard Creek	2	0	2	10	3	40	5	27	NA
1991	6406	Dillard Creek	0	2	2	11	1	50	4	45	NA
1992	6406	Dillard Creek	2	1	3	22	6	60	5	28	NA
1993	6406	Dillard Creek	0	0	0	8	0	0	5	35	NA
1994	6406	Dillard Creek	0	0	0	27	7	0	5	31	NA
2010	6003	Dillard Creek	1	0	1	40	20	100	1	12	12
2011	6003	Dillard Creek	1	0	1	6	2	100	1	9	9
1986	6404	Lincoln Peak	1	0	1	19	4	33	3	16	NA
1987	6404	Lincoln Peak	2	1	3	27	27	75	4	15	NA

Harvest Year	Hunt No.	GMU Name	Male Harvest	Female Harvest	Total Harvest	Total Goats Seen	Kids Seen	Hunter Success	Total Hunters	Hunter Days	Days to Harvest
1988	6404	Lincoln Peak	1	0	1	27	7	50	2	5	NA
1989	6404	Lincoln Peak	1	0	1	18	3	50	2	4	NA
1990	6404	Lincoln Peak	1	1	2	11	2	100	2	7	NA
1991	6404	Lincoln Peak	1	0	1	27	10	50	2	12	NA
1992	6404	Lincoln Peak	1	1	2	26	6	100	2	6	NA
1993	6404	Lincoln Peak	1	0	1	16	6	50	2	0	NA
1994	6404	Lincoln Peak	1	0	1	20	7	50	2	9	NA
1995	6404	Lincoln Peak	0	1	1	31	2	50	2	10	NA
2010	6402	Lincoln Peak	2	0	2	56	8	100	2	5	3
2011	6002	Lincoln Peak	1	1	2	100	31	100	2	19	10
2012	6002	Lincoln Peak	0	0	0	25	10	0	1	0	0
2013	6009	Lincoln Peak	0	0	0	3	0	0	1	0	0
1986	6403	Chowder Ridge	0	0	0	10	1	0	3	11	NA
1987	6403	Chowder Ridge	0	2	2	15	3	100	2	8	NA
1988	6403	Chowder Ridge	0	1	1	6	2	100	1	3	NA
1989	6403	Chowder Ridge	1	0	1	11	3	50	2	11	NA
1990	6403	Chowder Ridge	0	2	2	32	9	100	2	9	NA
1991	6403	Chowder Ridge	0	1	1	10	2	50	2	6	NA
1992	6403	Chowder Ridge	1	0	1	17	4	100	1	7	NA
1993	6403	Chowder Ridge	1	0	1	6	1	100	1	0	NA
1994	6403	Chowder Ridge	1	0	1	23	6	50	2	5	NA
1995	6403	Chowder Ridge	1	0	1	9	2	50	2	5	NA
2007	6009	Chowder Ridge	1	0	1	150	12	100	1	7	7
2008	6009	Chowder Ridge	0	1	1	1	0	100	1	1	1
2010	6009	Chowder Ridge	1	0	1	92	35	100	1	3	3
2011	6001	Chowder Ridge	1	0	1	85	12	100	1	5	5
2012	6001	Chowder Ridge	2	0	2	0	0	100	2	0	0
2013	6008	Chowder Ridge	1	0	1	50	0	100	1	6	6
1990	6409	Jack Mountain	1	1	2	20	3	100	2	5	NA
1991	6409	Jack Mountain	1	0	1	32	11	50	2	9	NA
1992	6409	Jack Mountain	0	2	2	28	4	100	2	3	NA
1993	6409	Jack Mountain	0	1	1	31	9	50	2	7	NA
1994	6409	Jack Mountain	0	1	1	6	2	50	2	9	NA
1995	6409	Jack Mountain	0	0	0	1	0	0	2	10	NA
1996	6409	Jack Mountain	1	0	1	2	0	100	1	5	NA

Harvest Year	Hunt No.	GMU Name	Male Harvest	Female Harvest	Total Harvest	Total Goats Seen	Kids Seen	Hunter Success	Total Hunters	Hunter Days	Days to Harvest
1997	6409	Jack Mountain	1	0	1	42	12	0.50	2	12	1.2
1998	6409	Jack Mountain	0	0	0	2	0	0.00	1	4	0
1999	6409	Jack Mountain	0	0	0	0	0	0	0	0	0
2000	6409	Jack Mountain	0	0	0	0	0	0	0	0	0
1991	6202	Methow	2	2	4	127	49	80	5	21	NA
1992	6202	Methow	3	2	5	106	24	100	5	14	NA
1993	6202	Methow	0	7	7	250	76	88	8	27	NA
1994	6202	Methow	4	2	6	184	73	86	7	22	NA
1996	6202	Methow	2	3	5	67	22	63	8	43	NA
1997	6202	Methow	1	1	2	40	14	100	2	2	1
1998	6202	Methow	1	2	3	108	42	60	5	26	8.7
1999	6202	Methow	2	2	4	161	54	80	5	36	9
2000	6202	Methow	4	1	5	115	42	100	5	33	6.6
2001	6202	Methow	0	0	0	22	10	0	2	24	0
2002	6202	Methow	0	1	1	51	14	50	2	14	0
2003	6202	Methow	2	0	2	62	18	100	2	7	3.5
2004	6202	Methow	1	0	1	52	15	50	2	12	12
2005	6202	Methow	1	0	1	43	5	50	2	23	23
2006	6202	Methow	1	0	1	23	12	100	1	3	3
2007	6002	Methow	1	0	1	4	0	100	1	4	NA
2008	6002	Methow	1	1	2	77	29	100	2	12	6
2012	6008	Methow	0	1	1	8	3	100	1	4	1
2013	6002	Methow	1	0	1	16	0	100	1	8	8
2009	6000	Mt. Baker West	1	1	2	112	29	100	2	10	5
2009	6001	Mt. Baker East	1	0	1	9	1	100	1	1	1
Totals			839	839	1678	21869	4339				

NA means information was not available.

Appendix F. Summary of furbearer CITES pelt sealing reports from Skagit, Whatcom, Chelan Counties, Region and Statewide, 1997–2008.

Table F-1. Furbearer CITES pelt sealing from Skagit County, 1997-2008.

Year	County, Region, Statewide	Bobcat Hound	Bobcat Hunted	Bobcat Trapped	Bobcat Unknown	Bobcat Totals	Otter Hunted	Otter Trapped	Otter Unknown	Otter Totals
1997	Skagit	0	5	5	0	10	0	30	0	30
	Region 4	0	11	43	0	54	0	119	0	119
	Statewide	10	142	365	4	521	0	771	1	772
1998	Skagit	0	0	7	0	7	0	23	0	23
	Region 4	0	3	13	0	16	0	69	0	69
	Statewide	0	140	180	4	324	0	436	0	436
1999	Skagit	0	1	2	0	3	0	35	0	35
	Region 4	0	11	23	0	34	0	76	0	76
	Statewide	0	253	296	0	549	0	421	0	421
2000	Skagit	0	2	0	0	2	0	4	0	4
	Region 4	0	15	4	0	19	0	4	0	4
	Statewide	0	206	59	4	269	0	62	0	62
2001	Skagit	0	3	0	0	3	3	0	0	3
	Region 4	0	28	2	0	30	8	18	0	26
	Statewide	0	312	62	0	374	8	122	0	130
2002	Skagit	NA	NA	NA	NA	NA	NA	NA	NA	NA
	Region 4	0	18	21	0	39	0	25	0	25
	Statewide	0	214	98	3	315	3	98	1	102
2003	Skagit	0	1	0	0	1	0	0	0	0
	Region 4	0	19	26	0	45	0	34	0	34
	Statewide	0	416	253	0	669	2	303	0	305
2004	Skagit	0	16	20	0	36	0	38	0	38
	Region 4	0	37	42	0	79	0	80	0	80
	Statewide	0	290	250	1	541	2	399	0	401
2005	Skagit	0	6	0	0	6	0	6	0	6
	Region 4	0	23	0	0	23	0	24	0	24
	Statewide	10	234	223	15	482	1	145	0	146
2006	Skagit	0	27	4	0	31	0	26	0	26

Year	County, Region, Statewide	Bobcat Hound	Bobcat Hunted	Bobcat Trapped	Bobcat Unknown	Bobcat Totals	Otter Hunted	Otter Trapped	Otter Unknown	Otter Totals
2007	Region 4	0	49	5	1	55	0	97	7	104
	Statewide	17	503	302	14	836	3	402	18	423
	Skagit	0	9	0	0	9	0	9	0	9
	Region 4	1	41	16	0	58	0	26	0	26
	Statewide	5	252	130	2	389	0	223	0	223
2008	Skagit	0	18	4	0	22	0	7	0	7
	Region 4	0	58	17	0	75	0	60	0	60
	Statewide	11	206	175	0	392	0	198	0	198
Totals	Skagit	0	88	42	0	130	3	178	0	181
	Region 4	1	313	212	1	527	8	632	7	647
	Statewide	53	3168	2393	54	5668	19	3580	20	3619

NA means information was not available.

Table F-2. Furbearer CITES pelt sealing from Whatcom County, 1997-2008.

Year	County, Region, Statewide	Bobcat Hound	Bobcat Hunted	Bobcat Trapped	Bobcat Unknown	Bobcat Totals	Otter Hunted	Otter Trapped	Otter Unknown	Otter Totals
1997	Whatcom	0	0	2	0	2	0	2	0	2
	Region 4	0	11	43	0	54	0	119	0	119
	Statewide	10	142	365	4	521	0	771	1	772
1998	Whatcom	0	0	4	0	4	0	19	0	19
	Region 4	0	3	13	0	16	0	69	0	69
	Statewide	0	140	180	4	324	0	436	0	436
1999	Whatcom	0	2	4	0	6	0	13	0	13
	Region 4	0	11	23	0	34	0	76	0	76
	Statewide	0	253	296	0	549	0	421	0	421
2000	Whatcom	0	1	0	0	1	0	0	0	0
	Region 4	0	15	4	0	19	0	4	0	4
	Statewide	0	206	59	4	269	0	62	0	62
2001	Whatcom	0	7	0	0	7	3	0	0	3
	Region 4	0	28	2	0	30	8	18	0	26
	Statewide	0	312	62	0	374	8	122	0	130
2002	Whatcom	NA	NA	NA	NA	NA	NA	NA	NA	NA
	Region 4	0	18	21	0	39	0	25	0	25
	Statewide	0	214	98	3	315	3	98	1	102
2003	Whatcom	NA	NA	NA	NA	NA	NA	NA	NA	NA
	Region 4	0	19	26	0	45	0	34	0	34
	Statewide	0	416	253	0	669	2	303	0	305
2004	Whatcom	0	2	0	0	2	0	2	0	2
	Region 4	0	37	42	0	79	0	80	0	80
	Statewide	0	290	250	1	541	2	399	0	401
2005	Whatcom	0	1	0	0	1	0	0	0	0
	Region 4	0	23	0	0	23	0	24	0	24
	Statewide	10	234	223	15	482	1	145	0	146
2006	Whatcom	0	0	0	0	0	0	33	0	33
	Region 4	0	49	5	1	55	0	97	7	104
	Statewide	17	503	302	14	836	3	402	18	423
2007	Whatcom	1	5	0	0	6	0	26	0	26
	Region 4	1	41	16	0	58	0	26	0	26

Year	County, Region, Statewide	Bobcat Hound	Bobcat Hunted	Bobcat Trapped	Bobcat Unknown	Bobcat Totals	Otter Hunted	Otter Trapped	Otter Unknown	Otter Totals
2008	Statewide	5	252	130	2	389	0	223	0	223
	Whatcom	0	6	4	0	10	0	0	0	0
	Region 4	0	58	17	0	75	0	60	0	60
	Statewide	11	206	175	0	392	0	198	0	198
Totals	Whatcom	1	24	14	0	39	3	95	0	98
	Region 4	1	313	212	1	527	8	632	7	647
	Statewide	53	3168	2393	54	5668	19	3580	20	3619

NA means information was not available.

Table F-3. Furbearer CITES pelt sealing from Chelan County, 1997-2008.

Year	County, Region, Statewide	Bobcat Hound	Bobcat Hunted	Bobcat Trapped	Bobcat Unknown	Bobcat Totals	Otter Hunted	Otter Trapped	Otter Unknown	Otter Totals
1997	Chelan	0	0	1	0	1	0	0	0	0
	Region 2	0	6	14	0	20	0	3	0	3
	Statewide	10	142	365	4	521	0	771	1	772
1998	Chelan	0	9	2	0	11	0	2	0	2
	Region 2	0	23	17	0	40	0	7	0	7
	Statewide	0	140	180	4	324	0	436	0	436
1999	Chelan	0	7	14	0	21	0	10	0	10
	Region 2	0	24	37	0	61	0	13	0	13
	Statewide	0	253	296	0	549	0	421	0	421
2000	Chelan	0	11	1	0	12	0	1	0	1
	Region 2	0	30	7	1	38	0	9	0	9
	Statewide	0	206	59	4	269	0	62	0	62
2001	Chelan	0	19	2	0	21	0	0	0	0
	Region 2	0	64	15	0	79	0	1	0	1
	Statewide	0	312	62	0	374	8	122	0	130
2002	Chelan	0	14	6	0	20	NA	NA	NA	NA
	Region 2	0	51	11	0	62	NA	NA	NA	NA
	Statewide	0	214	98	3	315	3	98	1	102
2003	Chelan	0	13	3	0	16	0	4	0	4
	Region 2	0	85	34	0	119	0	4	0	4
	Statewide	0	416	253	0	669	2	303	0	305
2004	Chelan	0	8	0	0	8	0	4	0	4
	Region 2	0	39	32	0	71	0	4	0	4
	Statewide	0	290	250	1	541	2	399	0	401
2005	Chelan	0	17	8	1	26	0	4	0	4
	Region 2	0	68	68	4	140	0	5	0	5
	Statewide	10	234	223	15	482	1	145	0	146
2006	Chelan	0	0	0	0	0	0	33	0	33
	Region 2	2	120	60	3	185	0	2	0	2
	Statewide	17	503	302	14	836	3	402	18	423
2007	Chelan	0	7	7	0	14	0	2	0	2
	Region 2	0	71	25	1	97	0	8	0	8

Year	County, Region, Statewide	Bobcat Hound	Bobcat Hunted	Bobcat Trapped	Bobcat Unknown	Bobcat Totals	Otter Hunted	Otter Trapped	Otter Unknown	Otter Totals
2008	Statewide	5	252	130	2	389	0	223	0	223
	Chelan	0	5	3	0	8	0	0	0	0
	Region 2	4	46	45	1	96	0	0	0	0
	Statewide	11	206	175	7	399	0	198	1	199
Totals	Chelan	0	110	47	1	158	3	95	0	98
	Region 2	6	627	365	10	1008	8	632	7	647
	Statewide	53	3168	2393	54	5668	19	3580	20	3619

NA means information was not available.

Appendix G. Harvest summary of furbearers (trapping) from Skagit, Whatcom and Chelan counties for years data were available, 1997–2009.

Table G-1. Furbearer harvest from Skagit County, 1997-2009.

Year	County, Region, Statewide	Badger	Beaver	Coyote	Marten	Mink	Muskrat	Raccoon	Skunk	Weasel	Otter
1997	Skagit	0	212	6	0	14	155	25	2	0	0
	Region 4	0	752	44	1	129	872	219	24	0	0
	Statewide	14	8116	1606	80	607	10294	1307	127	49	0
1998	Skagit	0	222	13	0	4	48	6	0	0	25
	Region 4	0	629	37	0	133	369	120	10	1	92
	Statewide	2	4558	922	14	424	4117	832	164	47	656
1999	Skagit	0	92	10	10	24	63	5	6	0	34
	Region 4	0	518	53	19	142	304	69	61	1	110
	Statewide	13	4819	838	140	462	3572	571	175	87	727
2000	Skagit	0	19	0	0	4	51	0	0	0	0
	Region 4	0	57	2	0	10	129	3	7	0	5
	Statewide	7	642	503	18	101	1159	250	16	44	83
2001	Skagit	0	27	0	0	0	10	6	8	0	0
	Region 4	0	164	0	0	1	33	19	8	0	17
	Statewide	3	1150	116	28	33	453	196	17	8	138
2002	Skagit	NA	100	0	0	0	23	0	0	0	13
	Region 4	NA	254	NA	NA	1	86	37	6	NA	47
	Statewide	NA	1703	32	19	62	683	281	NA	43	315
2003	Skagit	0	88	0	0	2	18	0	0	0	16
	Region 4	0	213	0	NA	5	27	60	6	0	49
	Statewide	2	1414	129	NA	45	452	375	179	59	331
2004	Skagit	0	147	0	0	0	0	0	0	0	39
	Region 4	0	339	0	NA	3	82	50	3	2	88
	Statewide	2	1715	62	NA	64	566	396	61	39	438
2005	Skagit	0	8	0	0	6	0	0	0	0	2
	Region 4	1	211	2	NA	6	9	168	1	0	27
	Statewide	1	1505	253	NA	47	527	382	67	1	231
2006	Skagit	0	299	0	0	9	0	20	0	0	63
	Region 4	0	635	0	NA	29	18	182	1	0	97

Year	County, Region, Statewide	Badger	Beaver	Coyote	Marten	Mink	Muskrat	Raccoon	Skunk	Weasel	Otter
2007	Statewide	6	2626	113	NA	78	1111	542	128	69	366
	Skagit	0	66	0	0	0	0	5	0	0	5
	Region 4	0	382	1	NA	9	6	234	0	0	65
2008	Statewide	2	1692	68	NA	49	218	575	12	42	257
	Skagit	0	239	0	0	0	0	33	0	0	14
	Region 4	0	329	1	NA	1	7	6	15	0	32
2009	Statewide	0	1132	38	NA	28	83	368	18	25	172
	Skagit	0	67	0	0	0	0	5	0	0	12
	Region 4	0	366	0	NA	7	6	347	0	0	41
Totals	Statewide	0	1804	107	NA	84	91	667	138	19	269
	Skagit	0	1586	29	10	63	368	105	16	0	223
	Region 4	1	4849	140	20	476	1948	1514	142	4	670
	Statewide	52	32876	4755	299	2084	23326	6742	1102	532	3983

NA means information was not available.

Table G-2. Furbearer harvest from Whatcom County, 1997-2009.

G-3

Year	County, Region, Statewide	Badger	Beaver	Coyote	Marten	Mink	Muskrat	Raccoon	Skunk	Weasel	Otter
1997	Whatcom	0	119	12	0	75	350	32	11	0	0
	Region 4	0	752	44	1	129	872	219	24	0	0
	Statewide	14	8116	1606	80	607	10294	1307	127	49	0
1998	Whatcom	0	134	7	0	118	158	18	0	1	25
	Region 4	0	629	37	0	133	369	120	10	1	92
	Statewide	2	4558	922	14	424	4117	832	164	47	656
1999	Whatcom	0	122	0	0	100	60	8	0	1	12
	Region 4	0	518	53	19	142	304	69	61	1	110
	Statewide	13	4819	838	140	462	3572	571	175	87	727
2000	Whatcom	0	0	0	0	0	0	0	0	0	1
	Region 4	0	518	53	19	142	304	69	61	1	110
	Statewide	13	4819	838	140	462	3572	571	175	87	727
2001	Whatcom	0	24	0	0	0	0	0	0	0	1
	Region 4	0	164	0	0	1	33	19	8	0	17
	Statewide	3	1150	116	28	33	453	196	17	8	138
2002	Whatcom	0	21	0	0	0	0	0	2	0	0
	Region 4	NA	254	NA	NA	1	86	37	6	NA	47
	Statewide	NA	1703	32	19	62	683	281	NA	43	315
2003	Whatcom	0	18	0	0	0	0	4	6	0	5
	Region 4	0	213	0	NA	5	27	60	6	0	49
	Statewide	2	1414	129	NA	45	452	375	179	59	331
2004	Whatcom	0	52	0	0	1	30	18	3	0	2
	Region 4	0	339	0	NA	3	82	50	3	2	88
	Statewide	2	1715	62	NA	64	566	396	61	39	438
2005	Whatcom	0	7	0	0	0	0	0	0	0	1
	Region 4	1	211	2	NA	6	9	168	1	0	27
	Statewide	1	1505	253	NA	47	527	382	67	1	231
2006	Whatcom	0	84	0	0	11	0	23	0	0	17
	Region 4	0	635	0	NA	29	18	182	1	0	97
	Statewide	6	2626	113	NA	78	1111	542	128	69	366
2007	Whatcom	0	69	0	0	1	0	8	0	0	0
	Region 4	0	382	1	NA	9	6	234	0	0	65

Year	County, Region, Statewide	Badger	Beaver	Coyote	Marten	Mink	Muskrat	Raccoon	Skunk	Weasel	Otter
2008	Statewide	2	1692	68	NA	49	218	575	12	42	257
	Whatcom	0	6	0	0	0	0	0	0	0	0
	Region 4	0	329	1	NA	1	7	6	15	0	32
	Statewide	0	1132	38	NA	28	83	368	18	25	172
2009	Whatcom	0	128	0	0	7	0	127	0	0	4
	Region 4	0	366	0	NA	7	6	347	0	0	41
	Statewide	0	1804	107	NA	84	91	667	138	19	269
Totals	Whatcom	0	650	19	0	306	598	238	22	2	64
	Region 4	1	4849	140	20	476	1948	1514	142	4	670
	Statewide	52	32876	4755	299	2084	23326	6742	1102	532	3983

NA means information was not available.

Table G-3. Furbearer harvest from Chelan County, 1997-2009.

Year	County, Region, Statewide	Badger	Beaver	Coyote	Marten	Mink	Muskrat	Raccoon	Skunk	Weasel	Otter
1997	Chelan	0	154	29	35	27	64	22	0	10	NA
	Region 2	7	863	374	374	83	4217	100	6	19	NA
	Statewide	14	8116	1606	80	607	10924	1307	127	49	NA
1998	Chelan	0	222	13	0	4	48	6	0	0	0
	Region 2	0	377	140	0	36	955	30	11	14	5
	Statewide	2	4558	922	14	424	4117	832	164	47	656
1999	Chelan	0	67	14	67	13	3	15	0	15	11
	Region 2	5	433	140	68	33	998	28	5	33	14
	Statewide	13	4819	838	140	462	3572	571	175	87	727
2000	Chelan	0	82	2	0	1	16	3	0	0	1
	Region 2	0	195	42	0	7	398	15	0	3	3
	Statewide	13	4819	838	140	462	3572	571	175	87	727
2001	Chelan	0	40	0	10	1	0	8	0	4	2
	Region 2	1	111	9	10	4	99	11	0	7	2
	Statewide	3	1150	116	28	33	453	196	17	8	138
2002	Chelan	0	5	0	0	0	0	0	0	0	0
	Region 2	NA	59	4	4	2	81	6	NA	1	NA
	Statewide	NA	1703	32	19	62	683	281	NA	43	315
2003	Chelan	0	21	0	0	1	0	0	0	0	4
	Region 2	1	84	20	NA	1	59	29	0	1	4
	Statewide	2	1414	129	NA	45	452	375	179	59	331
2004	Chelan	0	3	0	0	0	0	0	0	11	4
	Region 2	0	89	0	NA	0	33	3	0	11	5
	Statewide	2	1715	62	NA	64	566	396	61	39	438
2005	Chelan	0	6	0	0	0	0	0	6	0	0
	Region 2	0	114	0	NA	0	0	8	24	0	0
	Statewide	1	1505	253	NA	47	527	382	67	1	231
2006	Chelan	0	32	0	0	0	0	4	0	0	0
	Region 2	0	161	0	NA	1	0	8	42	10	0
	Statewide	6	2626	113	NA	78	1111	542	128	69	366
2007	Chelan	0	24	0	0	0	0	8	3	19	0
	Region 2	0	132	1	NA	0	0	49	7	28	1
	Statewide	2	1692	68	NA	49	218	575	12	42	257

Year	County, Region, Statewide	Badger	Beaver	Coyote	Marten	Mink	Muskrat	Raccoon	Skunk	Weasel	Otter
2008	Chelan	0	23	0	0	0	0	2	3	19	0
	Region 2	0	78	0	NA	0	57	18	3	24	0
	Statewide	0	1132	38	NA	28	83	368	18	25	172
2009	Chelan	0	59	0	0	20	0	2	0	1	3
	Region 2	0	256	44	NA	23	0	40	1	1	3
	Statewide	0	1804	107	NA	84	91	667	138	19	269
Totals ¹	Chelan	0	738	58	112	67	131	70	12	79	25
	Region 2	14	2952	774	456	190	6897	345	99	152	37
	Statewide	52	32876	4755	299	2084	23326	6742	1102	532	3983

¹Data not available for 2010-2013.

NA means information was not available.

Appendix H. Harvest summary of small game from Skagit, Whatcom and Chelan counties, 1997–2013.

Table H-1. Small game harvest from Skagit County, 1997-2013.

Year	County	Species	Total	No. of	Total Hunter	Days to
			Harvest	Hunters	Days	Harvest
1997	Skagit	Cottontail	67	187	349	0.19
1998	Skagit	Cottontail	302	211	1231	0.25
1999	Skagit	Cottontail	0	106	406	0.00
2000	Skagit	Cottontail	87	128	419	0.21
2001	Skagit	Cottontail	328	88	234	1.40
2002	Skagit	Cottontail	412	108	424	0.97
2003	Skagit	Cottontail	217	80	556	0.39
2004	Skagit	Cottontail	567	178	736	0.77
2005	Skagit	Cottontail	1213	123	788	1.54
2006	Skagit	Cottontail	176	87	428	0.41
2007	Skagit	Cottontail	514	124	428	1.20
2008	Skagit	Cottontail	268	82	327	1.00
2009	Skagit	Cottontail	344	105	373	1.00
2010	Skagit	Cottontail	843	107	859	1.00
2011	Skagit	Cottontail	273	87	337	1.00
2012	Skagit	Cottontail	207	79	365	1.00
2013	Skagit	Cottontail	633	109	1354	0.00
Totals			6451	1989	9614	avg. 0.72
1997	Skagit	Pheasant	1385	432	2590	0.53
1998	Skagit	Pheasant	1820	881	3849	0.47
1999	Skagit	Pheasant	1671	565	2018	0.83
2000	Skagit	Pheasant	1465	660	2941	0.50
2001	Skagit	Pheasant	1710	608	3035	0.56
2002	Skagit	Pheasant	1927	666	3601	0.54
2003	Skagit	Pheasant	2224	651	3604	0.62
2004	Skagit	Pheasant	1912	450	3208	0.60
2005	Skagit	Pheasant	1295	536	2284	0.57
2006	Skagit	Pheasant	2278	682	3684	0.62
2007	Skagit	Pheasant	1152	507	2056	0.56

Year	County	Species	Total Harvest	No. of Hunters	Total Hunter Days	Days to Harvest
2008	Skagit	Pheasant	1498	429	2071	1.00
2009	Skagit	Pheasant	NA	NA	NA	NA
2010	Skagit	Pheasant	NA	NA	NA	NA
2011	Skagit	Pheasant	NA	NA	NA	NA
2012	Skagit	Pheasant	NA	NA	NA	NA
2013	Skagit	Pheasant	NA	NA	NA	NA
Totals			20337	7067	34941	avg. 0.46
1997	Skagit	Turkey	NA	NA	NA	NA
1998	Skagit	Turkey	NA	NA	NA	NA
1999	Skagit	Turkey	NA	NA	NA	NA
2000	Skagit	Turkey	NA	NA	NA	NA
2001	Skagit	Turkey	NA	NA	NA	NA
2002	Skagit	Turkey	NA	NA	NA	NA
2003	Skagit	Turkey	NA	NA	NA	NA
2004	Skagit	Turkey	NA	NA	NA	NA
2005	Skagit	Turkey	NA	NA	NA	NA
2006	Skagit	Turkey	NA	NA	NA	NA
2007	Skagit	Turkey	NA	NA	NA	NA
2008	Skagit	Turkey	NA	NA	NA	NA
2009	Skagit	Turkey	NA	NA	NA	NA
2010	Skagit	Turkey	NA	NA	NA	NA
2011	Skagit	Turkey	NA	NA	NA	NA
2012	Skagit	Turkey	NA	NA	NA	NA
Totals			NA	NA	NA	NA
1997	Skagit	Quail	44	87	147	0.30
1998	Skagit	Quail	0	149	166	0.00
1999	Skagit	Quail	0	0	0	0.00
2000	Skagit	Quail	0	53	237	0.00
2001	Skagit	Quail	201	41	102	1.97
2002	Skagit	Quail	442	21	800	0.55
2003	Skagit	Quail	175	9	26	6.73
2004	Skagit	Quail	0	10	20	0.00
2005	Skagit	Quail	123	28	81	1.52
2006	Skagit	Quail	206	42	360	0.57

Year	County	Species	Total Harvest	No. of Hunters	Total Hunter Days	Days to Harvest
2007	Skagit	Quail	0	20	39	0.00
2008	Skagit	Quail	18	18	100	0.00
2009	Skagit	Quail	58	19	29	2.00
2010	Skagit	Quail	53	9	26	2.00
2011	Skagit	Quail	0	0	0	0.00
2012	Skagit	Quail	12	12	12	1.00
2013	Skagit	Quail	0	0	0	0.00
Totals			1332	518	2145	avg. 1.04
1997	Skagit	Forest Grouse	1527	1071	4515	0.63
1998	Skagit	Forest Grouse	3648	1232	6189	0.59
1999	Skagit	Forest Grouse	392	621	2861	0.14
2000	Skagit	Forest Grouse	2222	1674	9759	0.23
2001	Skagit	Forest Grouse	2432	1143	7096	0.34
2002	Skagit	Forest Grouse	4080	1529	8245	0.49
2003	Skagit	Forest Grouse	3883	1712	9972	0.39
2004	Skagit	Forest Grouse	4847	1457	10011	0.48
2005	Skagit	Forest Grouse	4353	1474	9944	0.44
2006	Skagit	Forest Grouse	3385	1224	6947	0.49
2007	Skagit	Forest Grouse	1891	1187	5575	0.34
2008	Skagit	Forest Grouse	2056	1120	8483	0.00
2009	Skagit	Forest Grouse	5012	1526	9632	1.00
2010	Skagit	Forest Grouse	3256	1254	7597	0.00
2011	Skagit	Forest Grouse	1703	923	4996	0.00
2012	Skagit	Forest Grouse	926	652	3139	0.00
2013	Skagit	Forest Grouse	2533	913	7717	0.00
Totals			48146	20712	122678	avg. 0.32
1997	Skagit	Snowshoe	0	0	0	0.00
1998	Skagit	Snowshoe	0	0	0	0.00
1999	Skagit	Snowshoe	16	206	302	0.05
2000	Skagit	Snowshoe	0	130	534	0.00
2001	Skagit	Snowshoe	29	29	69	0.42
2002	Skagit	Snowshoe	54	32	290	0.19
2003	Skagit	Snowshoe	208	18	18	11.56
2004	Skagit	Snowshoe	35	23	34	1.03

Year	County	Species	Total Harvest	No. of Hunters	Total Hunter Days	Days to Harvest
2005	Skagit	Snowshoe	19	10	10	1.90
2006	Skagit	Snowshoe	9	18	54	0.17
2007	Skagit	Snowshoe	57	38	200	0.29
2008	Skagit	Snowshoe	100	36	226	0.00
2009	Skagit	Snowshoe	29	29	268	0.00
2010	Skagit	Snowshoe	18	46	146	0.00
2011	Skagit	Snowshoe	114	24	187	1.00
2012	Skagit	Snowshoe	0	10	20	0.00
2013	Skagit	Snowshoe	0	0	0	0.00
Totals			688	649	2358	avg. 1.04
1997	Skagit	Jackrabbit	0	0	0	0.00
1998	Skagit	Jackrabbit	0	0	0	0.00
1999	Skagit	Jackrabbit	0	0	0	0.00
2000	Skagit	Jackrabbit	0	0	0	0.00
2001	Skagit	Jackrabbit	NA	NA	NA	NA
2002	Skagit	Jackrabbit	NA	NA	NA	NA
2003	Skagit	Jackrabbit	NA	NA	NA	NA
2004	Skagit	Jackrabbit	NA	NA	NA	NA
2005	Skagit	Jackrabbit	NA	NA	NA	NA
2006	Skagit	Jackrabbit	NA	NA	NA	NA
2007	Skagit	Jackrabbit	NA	NA	NA	NA
2008	Skagit	Jackrabbit	NA	NA	NA	NA
2009	Skagit	Jackrabbit	NA	NA	NA	NA
2010	Skagit	Jackrabbit	NA	NA	NA	NA
2011	Skagit	Jackrabbit	NA	NA	NA	NA
2012	Skagit	Jackrabbit	NA	NA	NA	NA
2013	Skagit	Jackrabbit	NA	NA	NA	NA
Totals			0	0	0	0.00
1997	Skagit	Snipe	15	84	352	0.04
1998	Skagit	Snipe	87	104	411	0.21
1999	Skagit	Snipe	20	154	399	0.05
2000	Skagit	Snipe	575	183	557	1.03
2001	Skagit	Snipe	440	38	110	4.00
2002	Skagit	Snipe	448	44	295	1.52

Year	County	Species	Total Harvest	No. of Hunters	Total Hunter Days	Days to Harvest
2003	Skagit	Snipe	9	18	35	0.26
2004	Skagit	Snipe	441	55	342	1.29
2005	Skagit	Snipe	490	28	197	2.49
2006	Skagit	Snipe	25	26	99	0.25
2007	Skagit	Snipe	59	20	20	2.95
2008	Skagit	Snipe	105	10	19	6.00
2009	Skagit	Snipe	79	30	49	2.00
2010	Skagit	Snipe	19	19	104	0.00
2011	Skagit	Snipe	301	47	235	1.00
2012	Skagit	Snipe	79	31	289	0.00
2013	Skagit	Snipe	24	45	92	0.00
Totals			3216	936	3605	avg. 1.35
1997	Skagit	Dove	449	117	273	1.64
1998	Skagit	Dove	0	0	0	0.00
1999	Skagit	Dove	97	142	402	0.24
2000	Skagit	Dove	63	62	57	1.11
2001	Skagit	Dove	9	38	94	0.10
2002	Skagit	Dove	44	11	22	2.00
2003	Skagit	Dove	213	36	44	4.84
2004	Skagit	Dove	56	11	56	1.00
2005	Skagit	Dove	27	9	18	1.50
2006	Skagit	Dove	9	9	9	1.00
2007	Skagit	Dove	0	0	0	0.00
2008	Skagit	Dove	0	0	0	0.00
2009	Skagit	Dove	0	0	0	0.00
2010	Skagit	Dove	324	29	95	3.00
2011	Skagit	Dove	161	33	81	2.00
2012	Skagit	Dove	24	12	136	0.00
2013	Skagit	Dove	113	19	56	2.00
Totals			1589	454	1031	avg. 1.20
1997	Skagit	Chukar	0	0	0	0.00
1998	Skagit	Chukar	0	0	0	0.00
1999	Skagit	Chukar	0	0	0	0.00
2000	Skagit	Chukar	0	0	0	0.00

Year	County	Species	Total Harvest	No. of Hunters	Total Hunter Days	Days to Harvest
2001	Skagit	Chukar	NA	NA	NA	NA
2002	Skagit	Chukar	0	0	0	0.00
2003	Skagit	Chukar	0	0	0	0.00
2004	Skagit	Chukar	0	0	0	0.00
2005	Skagit	Chukar	0	0	0	0.00
2006	Skagit	Chukar	0	0	0	0.00
2007	Skagit	Chukar	0	0	0	0.00
2008	Skagit	Chukar	0	0	0	0.00
2009	Skagit	Chukar	0	0	0	0.00
2010	Skagit	Chukar	0	0	0	0.00
2011	Skagit	Chukar	0	0	0	0.00
2012	Skagit	Chukar	0	0	0	0.00
2013	Skagit	Chukar	NA	NA	NA	NA
Totals			0	0	0	0.00
1997	Skagit	Hun/Gray	0	0	0	0.00
1998	Skagit	Hun/Gray	0	0	0	0.00
1999	Skagit	Hun/Gray	0	0	0	0.00
2000	Skagit	Hun/Gray	0	0	0	0.00
2001	Skagit	Hun/Gray	NA	NA	NA	NA
2002	Skagit	Hun/Gray	0	0	0	0.00
2003	Skagit	Hun/Gray	0	0	0	0.00
2004	Skagit	Hun/Gray	0	0	0	0.00
2005	Skagit	Hun/Gray	0	0	0	0.00
2006	Skagit	Hun/Gray	0	0	0	0.00
2007	Skagit	Hun/Gray	0	0	0	0.00
2008	Skagit	Hun/Gray	0	0	0	0.00
2009	Skagit	Hun/Gray	0	0	0	0.00
2010	Skagit	Hun/Gray	0	0	0	0.00
2011	Skagit	Hun/Gray	0	0	0	0.00
2012	Skagit	Hun/Gray	0	0	0	0.00
1997	Skagit	Can/Goose	465	558	2207	0.21
1998	Skagit	Can/Goose	1087	710	3063	0.35
1999	Skagit	Can/Goose	1747	692	3614	0.48
2000	Skagit	Can/Goose	1671	1079	5479	0.30

Year	County	Species	Total Harvest	No. of Hunters	Total Hunter Days	Days to Harvest
2001	Skagit	Can/Goose	1833	933	5505	0.33
2002	Skagit	Can/Goose	2971	769	6371	0.47
2003	Skagit	Can/Goose	1341	659	3401	0.39
2004	Skagit	Can/Goose	566	521	2271	0.25
2005	Skagit	Can/Goose	4030	654	3743	1.08
2006	Skagit	Can/Goose	3494	932	5895	0.59
2007	Skagit	Can/Goose	9622	1528	8699	1.11
2008	Skagit	Can/Goose	3963	1132	5377	1.00
2009	Skagit	Can/Goose	7626	1292	9996	1.00
2010	Skagit	Can/Goose	2193	791	4854	0.00
2011	Skagit	Can/Goose	6382	1041	7665	1.00
2012	Skagit	Can/Goose	3958	894	7351	1.00
2013	Skagit	Can/Goose	4530	850	6521	1.00
Totals			57479	15035	92012	avg. 0.62
1997	Skagit	Sept. Goose	163	216	208	0.78
1998	Skagit	Sept. Goose	297	260	533	0.56
1999	Skagit	Sept. Goose	202	194	185	1.09
2000	Skagit	Sept. Goose	359	436	530	0.68
2001	Skagit	Sept. Goose	410	204	569	0.72
2002	Skagit	Sept. Goose	295	222	517	0.57
2003	Skagit	Sept. Goose	267	142	486	0.55
2004	Skagit	Sept. Goose	134	174	370	0.36
2005	Skagit	Sept. Goose	227	140	370	0.61
2006	Skagit	Sept. Goose	361	199	344	1.05
2007	Skagit	Sept. Goose	685	255	501	1.37
2008	Skagit	Sept. Goose	532	212	541	1.00
2009	Skagit	Sept. Goose	643	227	611	1.00
2010	Skagit	Sept. Goose	443	238	556	1.00
2011	Skagit	Sept. Goose	464	125	220	0.00
2012	Skagit	Sept. Goose	584	206	369	2.00
2013	Skagit	Sept. Goose	718	217	474	2.00
Totals			6784	3667	7384	avg. 0.90
1997	Skagit	Duck	35573	2444	18519	1.92
1998	Skagit	Duck	56834	4083	29039	1.96

Year	County	Species	Total Harvest	No. of Hunters	Total Hunter Days	Days to Harvest
1999	Skagit	Duck	36674	2827	22177	1.65
2000	Skagit	Duck	42103	4082	25101	1.68
2001	Skagit	Duck	39168	3389	26747	1.46
2002	Skagit	Duck	34647	2776	26150	1.32
2003	Skagit	Duck	38591	2901	19317	2.00
2004	Skagit	Duck	33483	2769	18852	1.78
2005	Skagit	Duck	45744	2500	20859	2.22
2006	Skagit	Duck	52855	3014	23363	2.26
2007	Skagit	Duck	46650	2885	21571	2.16
2008	Skagit	Duck	52719	2624	21588	2.00
2009	Skagit	Duck	54434	3036	27700	2.00
2010	Skagit	Duck	40635	2643	21683	2.00
2011	Skagit	Duck	49702	2627	7665	1.00
2012	Skagit	Duck	51976	2798	24215	2.00
2013	Skagit	Duck	40968	2644	21102	2.00
Totals			752756	50042	375648	avg. 1.84

NA means information was not available.

Table H-2. Small game harvest from Whatcom County, 1997-2013.

Harvest Year	County	Species	Total	No. of	Total Hunter	Days to
			Harvest	Hunters	Days	Harvest
1997	Whatcom	Cottontail	454	118	947	0.48
1998	Whatcom	Cottontail	71	193	600	0.12
1999	Whatcom	Cottontail	431	183	247	0.21
2000	Whatcom	Cottontail	38	176	575	0.07
2001	Whatcom	Cottontail	281	146	1091	0.26
2002	Whatcom	Cottontail	43	75	846	0.05
2003	Whatcom	Cottontail	738	116	1298	0.57
2004	Whatcom	Cottontail	1258	136	1056	1.19
2005	Whatcom	Cottontail	368	76	839	0.44
2006	Whatcom	Cottontail	227	78	227	1.00
2007	Whatcom	Cottontail	381	38	628	0.61
2008	Whatcom	Cottontail	280	73	477	1.00
2009	Whatcom	Cottontail	682	77	505	1.00
2010	Whatcom	Cottontail	520	81	610	1.00
2011	Whatcom	Cottontail	1033	87	946	1.00
2012	Whatcom	Cottontail	168	79	277	1.00
2013	Whatcom	Cottontail	775	120	2468	0.00
Totals			7748	1852	13637	avg. 0.49
1997	Whatcom	Pheasant	3062	683	5437	0.56
1998	Whatcom	Pheasant	1960	527	3690	0.53
1999	Whatcom	Pheasant	2209	602	3557	0.62
2000	Whatcom	Pheasant	3419	884	5939	0.58
2001	Whatcom	Pheasant	3414	721	5359	0.64
2002	Whatcom	Pheasant	3458	547	5172	0.67
2003	Whatcom	Pheasant	2737	606	3938	0.70
2004	Whatcom	Pheasant	3976	612	5496	0.72
2005	Whatcom	Pheasant	3477	560	5012	0.69
2006	Whatcom	Pheasant	4011	741	5576	0.72
2007	Whatcom	Pheasant	2815	560	4918	0.57
2008	Whatcom	Pheasant	2781	569	4801	1.00
2009	Whatcom	Pheasant	0	0	0	0.00
2010	Whatcom	Pheasant	0	0	0	0.00
2011	Whatcom	Pheasant	0	0	0	0.00

Harvest Year	County	Species	Total Harvest	No. of Hunters	Total Hunter Days	Days to Harvest
2012	Whatcom	Pheasant	0	0	0	0.00
2013	Whatcom	Pheasant	NA	NA	NA	NA
Totals			37319	7612	58895	avg. 0.64
1997	Whatcom	Turkey	NA	NA	NA	NA
1998	Whatcom	Turkey	NA	NA	NA	NA
1999	Whatcom	Turkey	NA	NA	NA	NA
2000	Whatcom	Turkey	NA	NA	NA	NA
2001	Whatcom	Turkey	NA	NA	NA	NA
2002	Whatcom	Turkey	NA	NA	NA	NA
2003	Whatcom	Turkey	NA	NA	NA	NA
2004	Whatcom	Turkey	NA	NA	NA	NA
2005	Whatcom	Turkey	NA	NA	NA	NA
2006	Whatcom	Turkey	NA	NA	NA	NA
2007	Whatcom	Turkey	NA	NA	NA	NA
2008	Whatcom	Turkey	NA	NA	NA	NA
2009	Whatcom	Turkey	NA	NA	NA	NA
2010	Whatcom	Turkey	NA	NA	NA	NA
2011	Whatcom	Turkey	NA	NA	NA	NA
2012	Whatcom	Turkey	NA	NA	NA	NA
2013	Whatcom	Turkey	NA	NA	NA	NA
Totals			NA	NA	NA	NA
1997	Whatcom	Quail	0	0	0	0.00
1998	Whatcom	Quail	318	94	565	0.56
1999	Whatcom	Quail	0	0	0	0.00
2000	Whatcom	Quail	292	62	575	0.51
2001	Whatcom	Quail	211	48	91	2.32
2002	Whatcom	Quail	0	11	11	0.00
2003	Whatcom	Quail	8	27	27	0.30
2004	Whatcom	Quail	22	22	288	0.08
2005	Whatcom	Quail	164	37	100	1.64
2006	Whatcom	Quail	37	33	75	0.49
2007	Whatcom	Quail	20	30	98	0.20
2008	Whatcom	Quail	0	18	18	0.00
2009	Whatcom	Quail	19	10	39	0.00

Harvest Year	County	Species	Total Harvest	No. of Hunters	Total Hunter Days	Days to Harvest
2010	Whatcom	Quail	18	9	9	2.00
2011	Whatcom	Quail	0	0	0	0.00
2012	Whatcom	Quail	0	0	0	0.00
2013	Whatcom	Quail	0	12	12	0.00
Totals			1109	413	1908	avg. 0.47
1997	Whatcom	Forest Grouse	1553	1228	5267	0.47
1998	Whatcom	Forest Grouse	1633	731	3970	0.41
1999	Whatcom	Forest Grouse	392	554	2260	0.17
2000	Whatcom	Forest Grouse	1007	958	5131	0.20
2001	Whatcom	Forest Grouse	865	749	4261	0.20
2002	Whatcom	Forest Grouse	1773	954	6897	0.26
2003	Whatcom	Forest Grouse	1878	1052	6052	0.31
2004	Whatcom	Forest Grouse	1680	767	4648	0.36
2005	Whatcom	Forest Grouse	1652	970	6133	0.27
2006	Whatcom	Forest Grouse	1418	816	4168	0.03
2007	Whatcom	Forest Grouse	1277	897	4786	0.27
2008	Whatcom	Forest Grouse	1290	753	4325	0.00
2009	Whatcom	Forest Grouse	1750	950	4842	0.00
2010	Whatcom	Forest Grouse	905	851	4242	0.00
2011	Whatcom	Forest Grouse	702	675	4030	0.00
2012	Whatcom	Forest Grouse	442	274	1547	0.00
2013	Whatcom	Forest Grouse	960	552	3996	0.00
Totals			21177	13731	76555	avg. 0.17
1997	Whatcom	Snowshoe Hare	0	0	0	0.00
1998	Whatcom	Snowshoe Hare	0	0	0	0.00
1999	Whatcom	Snowshoe Hare	0	0	0	0.00
2000	Whatcom	Snowshoe Hare	0	0	0	0.00
2001	Whatcom	Snowshoe Hare	10	20	309	0.03
2002	Whatcom	Snowshoe Hare	64	21	235	0.27
2003	Whatcom	Snowshoe Hare	0	0	0	0.00
2004	Whatcom	Snowshoe Hare	0	0	0	0.00
2005	Whatcom	Snowshoe Hare	0	19	66	0.00
2006	Whatcom	Snowshoe Hare	0	14	100	0.00
2007	Whatcom	Snowshoe Hare	0	29	76	0.00

Harvest Year	County	Species	Total Harvest	No. of Hunters	Total Hunter Days	Days to Harvest
2008	Whatcom	Snowshoe Hare	18	9	18	1.00
2009	Whatcom	Snowshoe Hare	0	0	0	0.00
2010	Whatcom	Snowshoe Hare	0	0	0	0.00
2011	Whatcom	Snowshoe Hare	0	6	48	0.00
2012	Whatcom	Snowshoe Hare	0	0	0	0.00
2013	Whatcom	Snowshoe Hare	0	0	0	0.00
Totals			92	118	852	avg. 0.05
1997	Whatcom	Jackrabbit	0	0	0	0.00
1998	Whatcom	Jackrabbit	0	0	0	0.00
1999	Whatcom	Jackrabbit	0	0	0	0.00
2000	Whatcom	Jackrabbit	0	0	0	0.00
2001	Whatcom	Jackrabbit	NA	NA	NA	NA
2002	Whatcom	Jackrabbit	NA	NA	NA	NA
2003	Whatcom	Jackrabbit	NA	NA	NA	NA
2004	Whatcom	Jackrabbit	NA	NA	NA	NA
2005	Whatcom	Jackrabbit	NA	NA	NA	NA
2006	Whatcom	Jackrabbit	NA	NA	NA	NA
2007	Whatcom	Jackrabbit	NA	NA	NA	NA
2008	Whatcom	Jackrabbit	NA	NA	NA	NA
2009	Whatcom	Jackrabbit	NA	NA	NA	NA
2010	Whatcom	Jackrabbit	NA	NA	NA	NA
2011	Whatcom	Jackrabbit	NA	NA	NA	NA
2012	Whatcom	Jackrabbit	NA	NA	NA	NA
2013	Whatcom	Jackrabbit	NA	NA	NA	NA
Totals			0	0	0	avg. 0.00
1997	Whatcom	Snipe	0	0	0	0.00
1998	Whatcom	Snipe	157	144	308	0.51
1999	Whatcom	Snipe	0	0	0	0.00
2000	Whatcom	Snipe	111	73	44	2.52
2001	Whatcom	Snipe	NA	NA	NA	NA
2002	Whatcom	Snipe	21	10	157	0.13
2003	Whatcom	Snipe	9	18	35	0.26
2004	Whatcom	Snipe	33	11	22	1.50
2005	Whatcom	Snipe	0	0	0	0.00

Harvest Year	County	Species	Total Harvest	No. of Hunters	Total Hunter Days	Days to Harvest
2006	Whatcom	Snipe	64	9	64	1.00
2007	Whatcom	Snipe	20	10	29	0.69
2008	Whatcom	Snipe	76	19	28	3.00
2009	Whatcom	Snipe	247	30	217	1.00
2010	Whatcom	Snipe	10	10	10	1.00
2011	Whatcom	Snipe	54	22	47	1.00
2012	Whatcom	Snipe	0	7	7	0.00
2013	Whatcom	Snipe	41	17	41	1.00
Totals			843	380	1009	avg, 0.85
1997	Whatcom	Dove	0	0	0	0.00
1998	Whatcom	Dove	0	0	0	0.00
1999	Whatcom	Dove	0	0	0	0.00
2000	Whatcom	Dove	117	249	582	0.20
2001	Whatcom	Dove	0	10	61	0.00
2002	Whatcom	Dove	22	11	11	2.00
2003	Whatcom	Dove	35	18	27	1.30
2004	Whatcom	Dove	0	0	0	0.00
2005	Whatcom	Dove	116	28	93	1.25
2006	Whatcom	Dove	0	0	0	0.00
2007	Whatcom	Dove	48	19	38	1.26
2008	Whatcom	Dove	29	19	29	1.00
2009	Whatcom	Dove	0	0	0	0.00
2010	Whatcom	Dove	19	10	10	2.00
2011	Whatcom	Dove	0	7	7	0.00
2012	Whatcom	Dove	36	7	14	3.00
2013	Whatcom	Dove	92	30	71	1.00
Totals			514	408	943	avg. 0.76
1997	Whatcom	Chukar	0	0	0	0.00
1998	Whatcom	Chukar	0	0	0	0.00
1999	Whatcom	Chukar	0	0	0	0.00
2000	Whatcom	Chukar	0	0	0	0.00
2001	Whatcom	Chukar	NA	NA	NA	NA
2002	Whatcom	Chukar	0	0	0	0.00
2003	Whatcom	Chukar	0	0	0	0.00

Harvest Year	County	Species	Total Harvest	No. of Hunters	Total Hunter Days	Days to Harvest
2004	Whatcom	Chukar	0	0	0	0.00
2005	Whatcom	Chukar	0	0	0	0.00
2006	Whatcom	Chukar	0	0	0	0.00
2007	Whatcom	Chukar	0	0	0	0.00
2008	Whatcom	Chukar	0	0	0	0.00
2009	Whatcom	Chukar	0	0	0	0.00
2010	Whatcom	Chukar	0	0	0	0.00
2011	Whatcom	Chukar	0	0	0	0.00
2012	Whatcom	Chukar	0	0	0	0.00
2013	Whatcom	Chukar	NA	NA	NA	NA
Totals			0	0	0	avg. 0.00
1997	Whatcom	Hun/Gray	0	0	0	0.00
1998	Whatcom	Hun/Gray	0	0	0	0.00
1999	Whatcom	Hun/Gray	0	0	0	0.00
2000	Whatcom	Hun/Gray	0	0	0	0.00
2001	Whatcom	Hun/Gray	NA	NA	NA	NA
2002	Whatcom	Hun/Gray	0	0	0	0.00
2003	Whatcom	Hun/Gray	0	0	0	0.00
2004	Whatcom	Hun/Gray	0	0	0	0.00
2005	Whatcom	Hun/Gray	0	0	0	0.00
2006	Whatcom	Hun/Gray	0	0	0	0.00
2007	Whatcom	Hun/Gray	0	0	0	0.00
2008	Whatcom	Hun/Gray	0	0	0	0.00
2009	Whatcom	Hun/Gray	0	0	0	0.00
2010	Whatcom	Hun/Gray	0	0	0	0.00
2011	Whatcom	Hun/Gray	0	0	0	0.00
2012	Whatcom	Hun/Gray	0	0	0	0.00
2013	Whatcom	Hun/Gray	NA	NA	NA	NA
Totals			0	0	0	avg. 0.00
1997	Whatcom	Can/Goose	742	388	2022	0.37
1998	Whatcom	Can/Goose	1595	519	3773	0.42
1999	Whatcom	Can/Goose	921	580	2985	0.31
2000	Whatcom	Can/Goose	2576	676	4050	0.64
2001	Whatcom	Can/Goose	1058	558	3951	0.27

Harvest Year	County	Species	Total Harvest	No. of Hunters	Total Hunter Days	Days to Harvest
2002	Whatcom	Can/Goose	1226	408	3219	0.38
2003	Whatcom	Can/Goose	486	394	2552	0.19
2004	Whatcom	Can/Goose	343	340	1581	0.22
2005	Whatcom	Can/Goose	865	495	3256	0.27
2006	Whatcom	Can/Goose	1461	382	2640	0.55
2007	Whatcom	Can/Goose	1237	389	3403	0.36
2008	Whatcom	Can/Goose	419	295	2703	0.00
2009	Whatcom	Can/Goose	1129	405	2668	0.00
2010	Whatcom	Can/Goose	1285	490	3251	0.00
2011	Whatcom	Can/Goose	1371	375	2052	1.00
2012	Whatcom	Can/Goose	983	412	3001	0.00
2013	Whatcom	Can/Goose	1086	465	3007	0.00
Totals			18783	7106	47107	avg. 0.36
1997	Whatcom	Sept. Goose	311	292	508	0.61
1998	Whatcom	Sept. Goose	644	425	542	1.19
1999	Whatcom	Sept. Goose	527	223	533	0.99
2000	Whatcom	Sept. Goose	755	440	627	1.20
2001	Whatcom	Sept. Goose	427	272	668	0.64
2002	Whatcom	Sept. Goose	542	215	646	0.84
2003	Whatcom	Sept. Goose	359	90	333	1.08
2004	Whatcom	Sept. Goose	390	130	260	1.50
2005	Whatcom	Sept. Goose	475	178	449	1.06
2006	Whatcom	Sept. Goose	457	170	335	1.36
2007	Whatcom	Sept. Goose	406	124	265	1.53
2008	Whatcom	Sept. Goose	129	74	110	1.00
2009	Whatcom	Sept. Goose	500	198	434	1.00
2010	Whatcom	Sept. Goose	430	150	252	2.00
2011	Whatcom	Sept. Goose	473	138	277	2.00
2012	Whatcom	Sept. Goose	294	152	276	1.00
2013	Whatcom	Sept. Goose	262	145	344	1.00
Totals			7381	3271	6515	avg. 1.09
1997	Whatcom	Duck	14085	864	7553	1.86
1998	Whatcom	Duck	26224	1647	12502	2.10
1999	Whatcom	Duck	19910	1312	9261	2.15

Harvest Year	County	Species	Total Harvest	No. of Hunters	Total Hunter Days	Days to Harvest
2000	Whatcom	Duck	29362	1907	16394	1.79
2001	Whatcom	Duck	20383	1273	12884	1.58
2002	Whatcom	Duck	26173	1251	14314	1.83
2003	Whatcom	Duck	22242	1360	12701	1.75
2004	Whatcom	Duck	19819	1321	10756	1.84
2005	Whatcom	Duck	29094	1458	13198	2.20
2006	Whatcom	Duck	29898	1448	12539	2.38
2007	Whatcom	Duck	25844	1368	14625	1.77
2008	Whatcom	Duck	23146	1203	10963	2.00
2009	Whatcom	Duck	33081	1392	15523	2.00
2010	Whatcom	Duck	17450	1329	11481	2.00
2011	Whatcom	Duck	24195	1182	10543	2.00
2012	Whatcom	Duck	25720	1212	11783	2.00
2013	Whatcom	Duck	23947	1331	12636	2.00
Totals			410573	22858	209656	avg. 1.95

NA means information was not available.

Table H-3. Small game harvest from Chelan County, 1997-2013.

Harvest Year	County	Species	Total Harvest	No. of Hunters	Total Hunter Days	Days to Harvest
1998	Chelan	Cottontail	0	0	0	0.00
1999	Chelan	Cottontail	58	179	1713	0.03
2000	Chelan	Cottontail	87	99	237	0.37
2001	Chelan	Cottontail	128	107	311	0.41
2002	Chelan	Cottontail	86	97	375	0.23
2003	Chelan	Cottontail	27	54	226	0.12
2004	Chelan	Cottontail	54	87	196	0.28
2005	Chelan	Cottontail	133	95	472	0.28
2006	Chelan	Cottontail	54	45	136	0.40
2007	Chelan	Cottontail	29	86	192	0.15
2008	Chelan	Cottontail	45	72	234	0.00
2009	Chelan	Cottontail	77	77	125	1.00
2010	Chelan	Cottontail	80	108	271	0.00
2011	Chelan	Cottontail	81	46	140	1.00
2012	Chelan	Cottontail	168	79	257	1.00
2013	Chelan	Cottontail	240	87	339	1.00
Totals			1464	1473	4587	avg. 0.38
1997	Chelan	Pheasant	554	575	1497	0.37
1998	Chelan	Pheasant	805	611	1694	0.48
1999	Chelan	Pheasant	817	686	1709	0.48
2000	Chelan	Pheasant	1076	600	2051	0.52
2001	Chelan	Pheasant	1140	759	2215	0.51
2002	Chelan	Pheasant	1019	655	1928	0.53
2003	Chelan	Pheasant	1113	606	1867	0.60
2004	Chelan	Pheasant	1160	674	2084	0.56
2005	Chelan	Pheasant	751	527	1479	0.51
2006	Chelan	Pheasant	1507	711	2558	0.59
2007	Chelan	Pheasant	1228	741	3191	0.38
2008	Chelan	Pheasant	764	586	1443	1.00
2009	Chelan	Pheasant	1056	664	2052	1.00
2010	Chelan	Pheasant	1152	442	1673	1.00
2011	Chelan	Pheasant	713	420	968	1.00
2012	Chelan	Pheasant	905	356	2104	0.00
2013	Chelan	Pheasant	538	307	998	1.00

Harvest Year	County	Species	Total Harvest	No. of Hunters	Total Hunter Days	Days to Harvest
Totals			16298	78038	24714	avg. 0.61
1997	Chelan	Turkey	NA	NA	NA	NA
1998	Chelan	Turkey	NA	NA	NA	NA
1999	Chelan	Turkey	NA	NA	NA	NA
2000	Chelan	Turkey	1	NA	NA	NA
2001	Chelan	Turkey	1	6	16.7	6.00
2002	Chelan	Turkey	0	4	10	NA
2003	Chelan	Turkey	1	1	3	3.00
2004	Chelan	Turkey	0	3	7	NA
2005	Chelan	Turkey	0	8	22	NA
2006	Chelan	Turkey	NA	NA	NA	NA
2007	Chelan	Turkey	0	4	12	NA
2008	Chelan	Turkey	NA	NA	NA	NA
2009	Chelan	Turkey	NA	NA	NA	NA
2010	Chelan	Turkey	NA	NA	NA	NA
2011	Chelan	Turkey	NA	NA	NA	NA
2012	Chelan	Turkey	NA	NA	NA	NA
Totals			3	26	70.7	avg. 4.50
1997	Chelan	Quail	13872	1736	8825	1.57
1998	Chelan	Quail	7009	1015	3301	2.12
1999	Chelan	Quail	12632	1152	5185	2.44
2000	Chelan	Quail	10860	1313	4908	2.21
2001	Chelan	Quail	15940	1320	6118	2.61
2002	Chelan	Quail	16249	1442	6391	2.54
2003	Chelan	Quail	14078	1383	5346	2.63
2004	Chelan	Quail	20365	1696	8544	2.38
2005	Chelan	Quail	15939	1559	6284	2.54
2006	Chelan	Quail	12699	1238	5631	2.26
2007	Chelan	Quail	13545	1407	4950	2.74
2008	Chelan	Quail	7177	1009	3770	2.00
2009	Chelan	Quail	9395	1119	5701	2.00
2010	Chelan	Quail	6760	934	3338	2.00
2011	Chelan	Quail	7610	835	3197	2.00
2012	Chelan	Quail	6101	684	3844	2.00
2013	Chelan	Quail	6564	807	3226	2.00

Harvest Year	County	Species	Total Harvest	No. of Hunters	Total Hunter Days	Days to Harvest
Totals			196795	20649	11759	avg. 2.23
1997	Chelan	Forest Grouse	7075	4646	17571	0.99
1998	Chelan	Forest Grouse	6733	1903	11723	0.57
1999	Chelan	Forest Grouse	3374	1423	7078	0.48
2000	Chelan	Forest Grouse	4650	2184	9375	0.50
2001	Chelan	Forest Grouse	3714	1659	7841	0.47
2002	Chelan	Forest Grouse	5362	2462	11191	0.48
2003	Chelan	Forest Grouse	5123	2082	9721	0.53
2004	Chelan	Forest Grouse	4416	2343	9024	0.49
2005	Chelan	Forest Grouse	4830	2244	8742	0.55
2006	Chelan	Forest Grouse	5768	2485	12335	0.47
2007	Chelan	Forest Grouse	5399	2799	17013	0.32
2008	Chelan	Forest Grouse	5916	2388	11813	1.00
2009	Chelan	Forest Grouse	8205	3243	17871	0.00
2010	Chelan	Forest Grouse	3135	2387	10281	0.00
2011	Chelan	Forest Grouse	2237	1321	5674	0.00
2012	Chelan	Forest Grouse	2610	1456	10712	0.00
2013	Chelan	Forest Grouse	2067	1139	5016	0.00
Totals			80614	38164	182981	avg. 0.43
1997	Chelan	Snowshoe	49	108	141	0.35
1998	Chelan	Snowshoe	15	144	122	0.12
1999	Chelan	Snowshoe	0	106	2474	0.00
2000	Chelan	Snowshoe	0	56	106	0.00
2001	Chelan	Snowshoe	108	39	107	1.01
2002	Chelan	Snowshoe	122	33	87	1.40
2003	Chelan	Snowshoe	18	18	62	0.29
2004	Chelan	Snowshoe	0	11	44	0.00
2005	Chelan	Snowshoe	19	29	48	0.40
2006	Chelan	Snowshoe	0	9	91	0.00
2007	Chelan	Snowshoe	38	29	38	1.00
2008	Chelan	Snowshoe	28	46	470	0.00
2009	Chelan	Snowshoe	10	29	296	0.00
2010	Chelan	Snowshoe	0	18	64	0.00
2011	Chelan	Snowshoe	48	47	280	0.00
2012	Chelan	Snowshoe	0	10	10	0.00

Harvest Year	County	Species	Total Harvest	No. of Hunters	Total Hunter Days	Days to Harvest
2013	Chelan	Snowshoe	109	66	513	0.00
Totals			564	798	4953	avg. 0.29
1997	Chelan	Jackrabbit	28	84	518	0.05
1998	Chelan	Jackrabbit	0	0	0	0.00
1999	Chelan	Jackrabbit	0	106	2138	0.00
2000	Chelan	Jackrabbit	7	58	633	0.01
Totals			35	248	3289	avg. 0.02
1997	Chelan	Snipe	60	113	67	0.90
1998	Chelan	Snipe	0	0	0	0.00
1999	Chelan	Snipe	0	0	0	0.00
2000	Chelan	Snipe	37	61	NA	NA
2001	Chelan	Snipe	26	9	43	0.60
2002	Chelan	Snipe	0	0	0	0.00
2003	Chelan	Snipe	0	0	0	0.00
2004	Chelan	Snipe	0	0	0	0.00
2005	Chelan	Snipe	290	10	97	2.99
2006	Chelan	Snipe	0	0	0	0.00
2007	Chelan	Snipe	122	19	56	2.18
2008	Chelan	Snipe	0	0	0	0.00
2009	Chelan	Snipe	0	0	0	0.00
2010	Chelan	Snipe	46	9	28	2.00
2011	Chelan	Snipe	0	0	0	0.00
2012	Chelan	Snipe	0	0	0	0.00
2013	Chelan	Snipe	0	0	0	0.00
Totals			581	221	291	avg. 0.52
1997	Chelan	Dove	6664	923	2203	3.02
1998	Chelan	Dove	7653	554	1108	6.91
1999	Chelan	Dove	2163	406	557	3.88
2000	Chelan	Dove	6053	717	1141	5.30
2001	Chelan	Dove	5737	403	1100	5.22
2002	Chelan	Dove	3815	386	933	4.09
2003	Chelan	Dove	2784	267	643	4.33
2004	Chelan	Dove	5552	389	1008	5.51
2005	Chelan	Dove	3254	272	676	4.81
2006	Chelan	Dove	2395	255	559	4.28

Harvest Year	County	Species	Total Harvest	No. of Hunters	Total Hunter Days	Days to Harvest
2007	Chelan	Dove	1953	267	495	3.95
2008	Chelan	Dove	2491	260	618	4.00
2009	Chelan	Dove	2263	237	574	4.00
2010	Chelan	Dove	1787	171	371	5.00
2011	Chelan	Dove	829	145	349	2.00
2012	Chelan	Dove	676	114	262	3.00
2013	Chelan	Dove	855	102	257	3.00
Totals			56924	5868	12854	avg. 4.25
1997	Chelan	Chukar	5672	1443	5405	1.05
1998	Chelan	Chukar	3827	686	2697	1.42
1999	Chelan	Chukar	5553	1098	4730	1.17
2000	Chelan	Chukar	3393	1278	4581	0.74
2001	Chelan	Chukar	4363	1041	4526	0.96
2002	Chelan	Chukar	7562	1098	4759	1.59
2003	Chelan	Chukar	3250	904	3073	1.06
2004	Chelan	Chukar	3794	1082	5137	0.74
2005	Chelan	Chukar	4042	921	3022	1.34
2006	Chelan	Chukar	3651	943	3628	1.01
2007	Chelan	Chukar	2257	862	3369	0.67
2008	Chelan	Chukar	1769	709	2561	1.00
2009	Chelan	Chukar	2091	854	3582	1.00
2010	Chelan	Chukar	1275	614	2009	1.00
2011	Chelan	Chukar	1041	371	1295	1.00
2012	Chelan	Chukar	425	294	952	0.00
2013	Chelan	Chukar	608	525	1822	0.00
Totals			54573	14723	57148	avg. 0.98
1997	Chelan	Hun/Gray	238	396	1661	0.14
1998	Chelan	Hun/Gray	489	262	538	0.91
1999	Chelan	Hun/Gray	538	464	1420	0.38
2000	Chelan	Hun/Gray	556	489	1468	0.38
2001	Chelan	Hun/Gray	670	350	1648	0.41
2002	Chelan	Hun/Gray	371	302	905	0.41
2003	Chelan	Hun/Gray	106	106	408	0.26
2004	Chelan	Hun/Gray	134	202	859	0.16
2005	Chelan	Hun/Gray	529	118	459	1.15

Harvest Year	County	Species	Total Harvest	No. of Hunters	Total Hunter Days	Days to Harvest
2006	Chelan	Hun/Gray	244	198	773	0.32
2007	Chelan	Hun/Gray	99	127	322	0.31
2008	Chelan	Hun/Gray	62	142	535	0.00
2009	Chelan	Hun/Gray	66	133	523	0.00
2010	Chelan	Hun/Gray	81	108	317	0.00
2011	Chelan	Hun/Gray	83	73	264	0.00
2012	Chelan	Hun/Gray	468	142	482	1.00
2013	Chelan	Hun/Gray	68	99	481	0.00
Totals	Chelan	Hun/Gray	4802	3711	13063	avg. 0.35
1997	Chelan	Can/Goose	1600	509	2404	0.67
1998	Chelan	Can/Goose	385	295	772	0.50
1999	Chelan	Can/Goose	537	275	1043	0.51
2000	Chelan	Can/Goose	1283	425	1281	1.00
2001	Chelan	Can/Goose	1047	347	1490	0.70
2002	Chelan	Can/Goose	755	203	966	0.78
2003	Chelan	Can/Goose	656	214	886	0.74
2004	Chelan	Can/Goose	751	220	796	0.94
2005	Chelan	Can/Goose	576	257	1127	0.51
2006	Chelan	Can/Goose	895	255	1175	0.76
2007	Chelan	Can/Goose	742	237	1113	0.67
2008	Chelan	Can/Goose	660	194	660	1.00
2009	Chelan	Can/Goose	388	130	638	1.00
2010	Chelan	Can/Goose	306	190	608	1.00
2011	Chelan	Can/Goose	480	240	873	1.00
2012	Chelan	Can/Goose	994	211	1280	1.00
2013	Chelan	Can/Goose	538	236	1006	1.00
Totals			12593	4438	18118	avg. 0.81
1997	Chelan	Sept. Goose	505	224	309	1.63
1998	Chelan	Sept. Goose	115	134	73	1.58
1999	Chelan	Sept. Goose	81	143	93	0.87
2000	Chelan	Sept. Goose	184	158	144	1.28
2001	Chelan	Sept. Goose	67	43	100	0.67
2002	Chelan	Sept. Goose	44	22	22	2.00
2003	Chelan	Sept. Goose	35	27	35	1.00
2004	Chelan	Sept. Goose	140	43	97	1.44

Harvest Year	County	Species	Total Harvest	No. of Hunters	Total Hunter Days	Days to Harvest
2005	Chelan	Sept. Goose	9	26	97	0.09
2006	Chelan	Sept. Goose	61	43	61	1.00
2007	Chelan	Sept. Goose	180	57	132	1.36
2008	Chelan	Sept. Goose	75	47	203	0.00
2009	Chelan	Sept. Goose	0	0	0	0.00
2010	Chelan	Sept. Goose	0	0	0	0.00
2011	Chelan	Sept. Goose	0	0	0	0.00
2012	Chelan	Sept. Goose	0	0	0	0.00
2013	Chelan	Sept. Goose	303	16	70	4.00
Totals			1799	983	1436	avg. 0.99
1997	Chelan	Duck	11195	990	5071	2.21
1998	Chelan	Duck	3906	593	1856	2.10
1999	Chelan	Duck	5199	488	2406	2.16
2000	Chelan	Duck	5700	666	2902	1.96
2001	Chelan	Duck	6563	647	2879	2.28
2002	Chelan	Duck	4397	465	2630	1.67
2003	Chelan	Duck	5574	508	2195	2.54
2004	Chelan	Duck	7636	617	2763	2.76
2005	Chelan	Duck	8392	623	3116	2.69
2006	Chelan	Duck	9146	658	3603	2.54
2007	Chelan	Duck	11873	614	3998	2.97
2008	Chelan	Duck	5407	426	1791	0.00
2009	Chelan	Duck	3471	431	1763	0.00
2010	Chelan	Duck	6202	413	2183	0.00
2011	Chelan	Duck	5790	538	2417	0.00
2012	Chelan	Duck	8310	446	3725	0.00
2013	Chelan	Duck	6013	496	2818	2.00
Totals			114774	9619	48116	avg. 1.64

NA means information was not available.

The Department of the Interior protects and manages the nation's natural resources and cultural heritage; provides scientific and other information about those resources; and honors its special responsibilities to American Indians, Alaska Natives, and affiliated Island Communities.

NPS 168/130564, November 2015

National Park Service
U.S. Department of the Interior



Natural Resource Stewardship and Science

1201 Oakridge Drive, Suite 150
Fort Collins, CO 80525

www.nature.nps.gov

EXPERIENCE YOUR AMERICA™