

**UPPER SKAGIT WATERSHED
FISH AND WILDLIFE
MANAGEMENT PLAN**

This document is an unofficial draft. It has not yet received Ministry of Environment approval and is intended only as an information tool for presenting the proposed plan during the public comment period.

TABLE OF CONTENTS

TABLE OF CONTENTS	<i>i</i>
LIST OF FIGURES	<i>ii</i>
DEFINITIONS	<i>iii</i>
ABBREVIATIONS	<i>v</i>
1.0 INTRODUCTION	<i>1</i>
1.1 LOCATION AND LAND TENURE	<i>1</i>
1.2 BIOGEOGRAPHY	<i>4</i>
1.3 HISTORICAL USES OF THE WATERSHED	<i>4</i>
1.4 CURRENT USES OF THE WATERSHED	<i>5</i>
2.0 DEVELOPMENT OF THE SKAGIT WATERSHED FISH AND WILDLIFE MANAGEMENT PLAN	<i>5</i>
3.0 MANAGEMENT CONCERNS	<i>6</i>
3.1 FISHERIES	<i>6</i>
3.1.1 Fish Population Monitoring	<i>9</i>
3.1.2 Reservoir Catch Regulations	<i>9</i>
3.1.3 Habitat Protection	<i>10</i>
3.1.4 Guided Angling	<i>10</i>
3.1.5 Angler Monitoring	<i>11</i>
3.1.6 River Access	<i>12</i>
3.1.7 Delineation of Areas with Different Regulations	<i>12</i>
3.1.8 Introduced Aquatic Species	<i>13</i>
3.2 WATER QUALITY	<i>13</i>
3.3 ACCESS	<i>14</i>
3.3.1 Road Construction	<i>14</i>
3.3.2 Trail Construction	<i>15</i>
3.4 WILDLIFE TREES	<i>16</i>
3.5 HARLEQUIN DUCKS (<i>Histrionicus histrionicus</i>)	<i>17</i>
3.5.1 Population Trends	<i>17</i>
3.5.2 Disturbance	<i>17</i>
3.5.3 Awareness/Education	<i>18</i>
3.5.4 Rafting/Kayaking	<i>18</i>
3.6 MOUNTAIN GOATS (<i>Oreamnos americanus</i>)	<i>19</i>
3.6.1 Habitat Protection	<i>19</i>
3.6.2 Motorized Vehicle Disturbance	<i>20</i>
3.7 GRIZZLY BEARS (<i>Ursus arctos</i>)	<i>20</i>
3.8 SPOTTED OWLS (<i>Strix occidentalis</i>)	<i>22</i>
3.9 OTHER SPECIES AT RISK	<i>22</i>
3.10 MULE DEER (<i>Odocoileus hemionus</i>)	<i>23</i>

3.11 HUNTING AND TRAPPING	24
3.12 INFORMATION GAPS	24
3.13 INTERNATIONAL WILDLIFE	26
3.14 HUMAN-WILDLIFE CONFLICT	27
3.15 ENFORCEMENT	28
4.0 LOOKING TO THE FUTURE	28
4.1 PLAN REVIEW	28
4.2 NEW/INCREASING PRESSURES ON THE SKAGIT WATERSHED	28
4.2.1 Increasing Human Population of the Fraser Valley	29
4.2.2 Climate Change	29
5.0 REFERENCES	30
5.1 INTERNET RESOURCES	30
5.2 LITERATURE CITED AND OTHER REFERENCES	31
APPENDICES	36
APPENDIX 1: SUMMARY OF MANAGEMENT STRATEGIES REQUIRING ACTION AND FUNDING	36
APPENDIX 2: LIST OF CONTACTS	36
APPENDIX 3: HABITAT MAPS	37
APPENDIX 4: SPECIES LISTS	38
A) Species at Risk	38
B) Species With Open Hunting/Trapping Seasons in the Skagit Watershed	41

LIST OF FIGURES

Figure 1. Skagit River Watershed Protected Areas – includes Ecological Reserves in Skagit Valley Provincial Park

Figure 2. Cross-border Contiguous Protected Areas

Figure 3. Division of River Fishing Sections

DEFINITIONS

Bioaccumulation: the build up of toxic substances in an animal over time. These are usually organic substances which are stored in the fat tManagement Concerns of animals. Toxic substances may enter an animal's body through ingestion, respiration, physical contact, etc. Because these substances are stored rather than being removed by the renal system (or are removed more slowly than they are aquired), they accumulate in the animal's body in concentrations that exceed that of the surrounding environment.

Biomagnification: the increase in concentration of toxins moving up the food chain. When organisms low on the food chain bioaccumulate toxins they pass these toxins on to the animals which feed on them. Every time an animal feeds on a contaminated food source it accumulates all of the toxins stored in the body of the other organism. The result is that animals at the top of the food chain can have very high concentrations of toxins in their bodies.

Draw Down: the period of time when the water level in a reservoir is falling. During this time more water is being let out of the reservoir to produce electricity than is entering the reservoir from its tributaries. Draw down may also refer to the difference between the full pool water level and the minimum water level that is reached before the reservoir begins to refill.

Full Pool: the maximum water level in a reservoir.

Habitat Feature: a component of a species' habitat that is critical to its survival and/or reproduction. Examples include den sites, mineral licks, and wildlife trees.

Herpetile: term collectively referring to reptiles and amphibians.

Indicator Species: species whose presence or absence gives a certain indication about the health of an ecosystem. For example, amphibians are sensitive to water pollution and large carnivores require large tracts of land and a stable prey base.

Natal Range: critical habitat that is used by a species during birthing and while rearing young.

Refugia: a habitat feature that provides an animal with protection or relief from a stressor, such as a cool, shaded location on a hot, sunny day (thermal refugia) or a calm pool on a fast flowing river (energetic refugia).

Summer Range: critical habitat that is used by a species during summer.

Top Carnivore/Predator: an animal at the top of the food chain/web in its ecosystem. These animals are not normally preyed upon by other animals as adults. Some, such as bears are omnivores rather than strict carnivores. Top carnivores typically have low

densities, large home ranges, and slow reproduction, making them vulnerable to human-caused population declines. Low reproductive rates mean that populations are slow to recover following such an event. An ecosystem that is able to support its top carnivores should have enough space and resources to support its other native species, provided their species-specific habitat features are available.

Trophic Level: the position on a food chain at which an organism feeds. For example, a plant is at the first trophic level; the mouse that feeds on the plant's berries is at the second trophic level; the snake that feeds on the mouse is at the third trophic level, etc.

Winter Range: critical habitat that is used by a species during winter.

DRAFT

ABBREVIATIONS

CDC	Conservation Data Centre
FVRD	Fraser Valley Regional District
MEM	Ministry of Energy, Mines and Petroleum Resources (previously Ministry of Energy and Mines)
MOE	Ministry of Environment
MOFR	Ministry of Forests and Range
MOT	Ministry of Transportation
MTSA	Ministry of Tourism, Sport and the Arts
NOCA	North Cascades National Park Service Complex
NPS	US National Park Service
OGMA	Old Growth Management Area
SARA	Federal Species at Risk Act
SEEC	Skagit Environmental Endowment Commission
TSA	Timber Supply Area
USFWMP	Upper Skagit Watershed Fish and Wildlife Management Plan
WDFW	Washington Department of Fish and Wildlife
WHA	Wildlife Habitat Area

1.0 INTRODUCTION

This management plan relates to known fish and wildlife populations inhabiting the Skagit River watershed of southwestern British Columbia. A brief introduction to the area follows. A more in-depth discussion on the natural and historical features of the watershed can be found in the *Skagit River Watershed Background Report* (Armstrong 2007) and the Appendices of the *Ecosystem Plan for E.C. Manning Provincial Park, Skagit Valley Provincial Park and Cascade Recreation Area* (Summit Environmental Consultants 2003). The *E.C. Manning Provincial Park and Cascade Recreation Area Management Plan* (MOE 2004) and the *Silverdaisy Integrated Management Plan* (MEM *et al.* 1998) also provide good introductory information for the watershed and surrounding region.

1.1 LOCATION AND LAND TENURE

The Skagit River arises near Allison Pass in the Hozomeen Range of the North Cascade Mountains of southwestern British Columbia. It flows northwest to its confluence with the southeasterly flowing Sumallo River and then turns southwest to its confluence with the Klesilkwa River and southeast to the US border at 49° N latitude. On the US side of the border, the Skagit passes through a series of three hydroelectric dams and their reservoirs, turns west once more, and becomes the second largest river in Washington State before emptying into Puget Sound near Mount Vernon. The Skagit is an important salmon river below the dams. The three dams are part of the Skagit Hydroelectric Project operated by Seattle City Light, the public utility providing electricity to the city of Seattle, WA. The largest and most northerly reservoir, Ross Lake, floods an area of approximately 194ha of the Skagit Valley in British Columbia when at full pool. The reservoir falls to well south of the Canadian border during winter draw down.

On the Canadian side of the border, the Skagit watershed covers an area of approximately 100,000ha lying about 170km east of Vancouver and 25km southeast of Hope. It is contained mostly (about 70%) within Skagit Valley and E.C. Manning Provincial Parks and Cascade Provincial Recreation Area. Four Ecological Reserves are located within the watershed in Skagit Valley Provincial Park. A smaller portion of the watershed covers Crown land outside the provincial protected areas and a small area in the northwest corner is privately owned land (Fig. 1). The watershed north of Ross Dam on the US side of the international boundary is located within Ross Lake National Recreation Area, North Cascades National Park (both part of the North Cascades National Park Service Complex) and the Pasayten Wilderness of the Mount Baker-Snoqualmie National Forest. The Skagit watershed therefore forms an important part of an international complex of contiguous protected wildlands (Fig. 2). It is vital that fish and wildlife management Management Concerns be addressed in the context of the watershed and ecosystem as a whole, regardless of borders, and that responses to management Management Concerns be coordinated across the various jurisdictions involved.

The Canadian Skagit watershed falls within the jurisdiction of several provincial ministries including the Ministry of Environment, Ministry of Forests and Range, Ministry of Energy, Mines and Petroleum Resources, and Ministry of Transportation. Federal interests in the watershed include migratory birds listed under the *Migratory Birds Convention Act* and threatened or endangered species listed under the *Species at Risk Act* (SARA). Waterfowl are a joint federal/provincial responsibility. Multiple private enterprises also have stakes in the watershed. These include BC Timber Sales, Cattermole Timber, mineral tenure holders, Sunshine Valley recreational resort community, Emil Anderson Maintenance, Quarry Pacific Industries, hunting and angling guide outfitters, and several traplines. For a more in-depth discussion of land tenures and jurisdictions within the watershed refer to the Skagit River Watershed Background Report (Armstrong 2007).

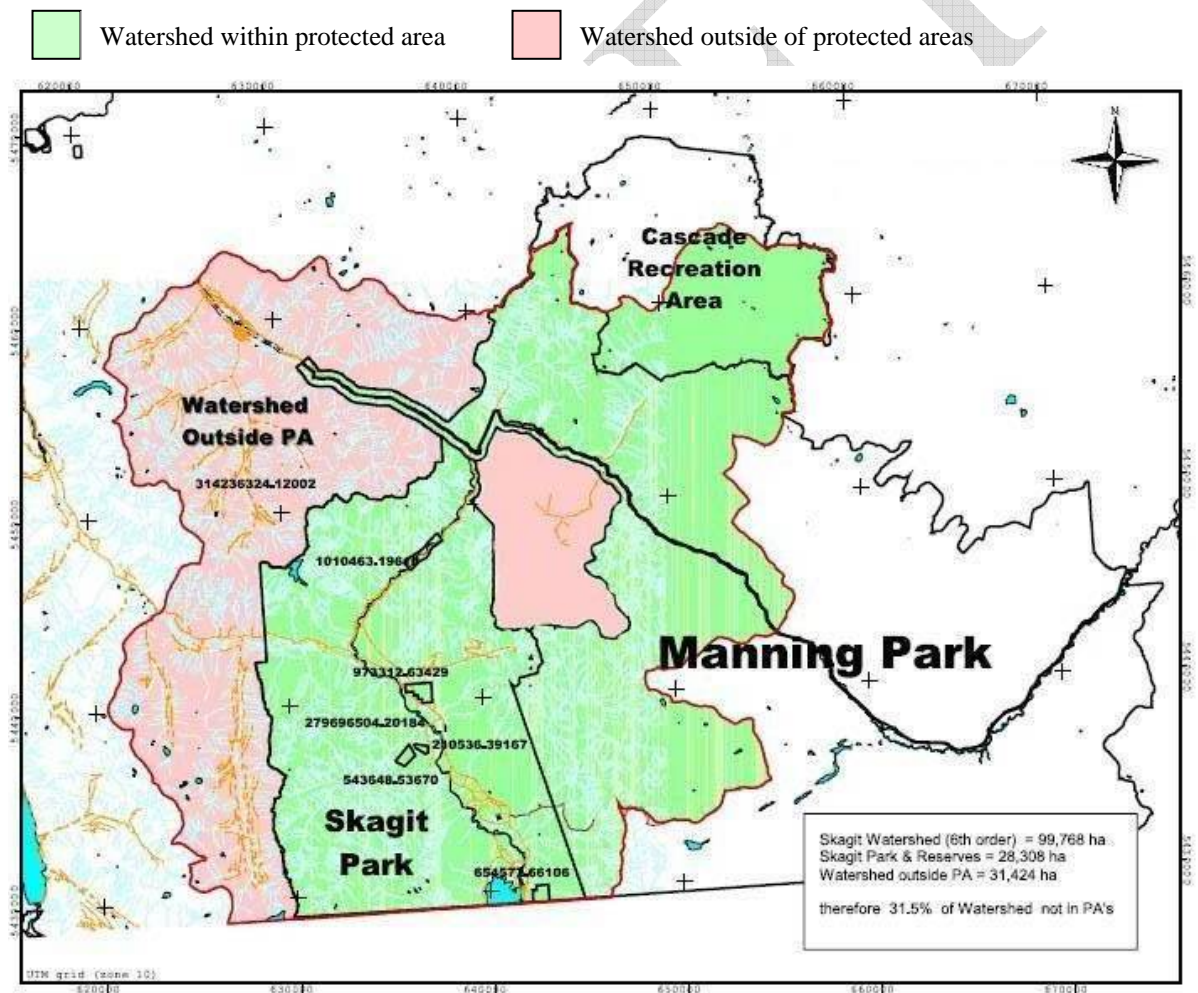


Fig. 1 Skagit River Watershed Protected Areas – includes Ecological Reserves in Skagit Valley Provincial Park

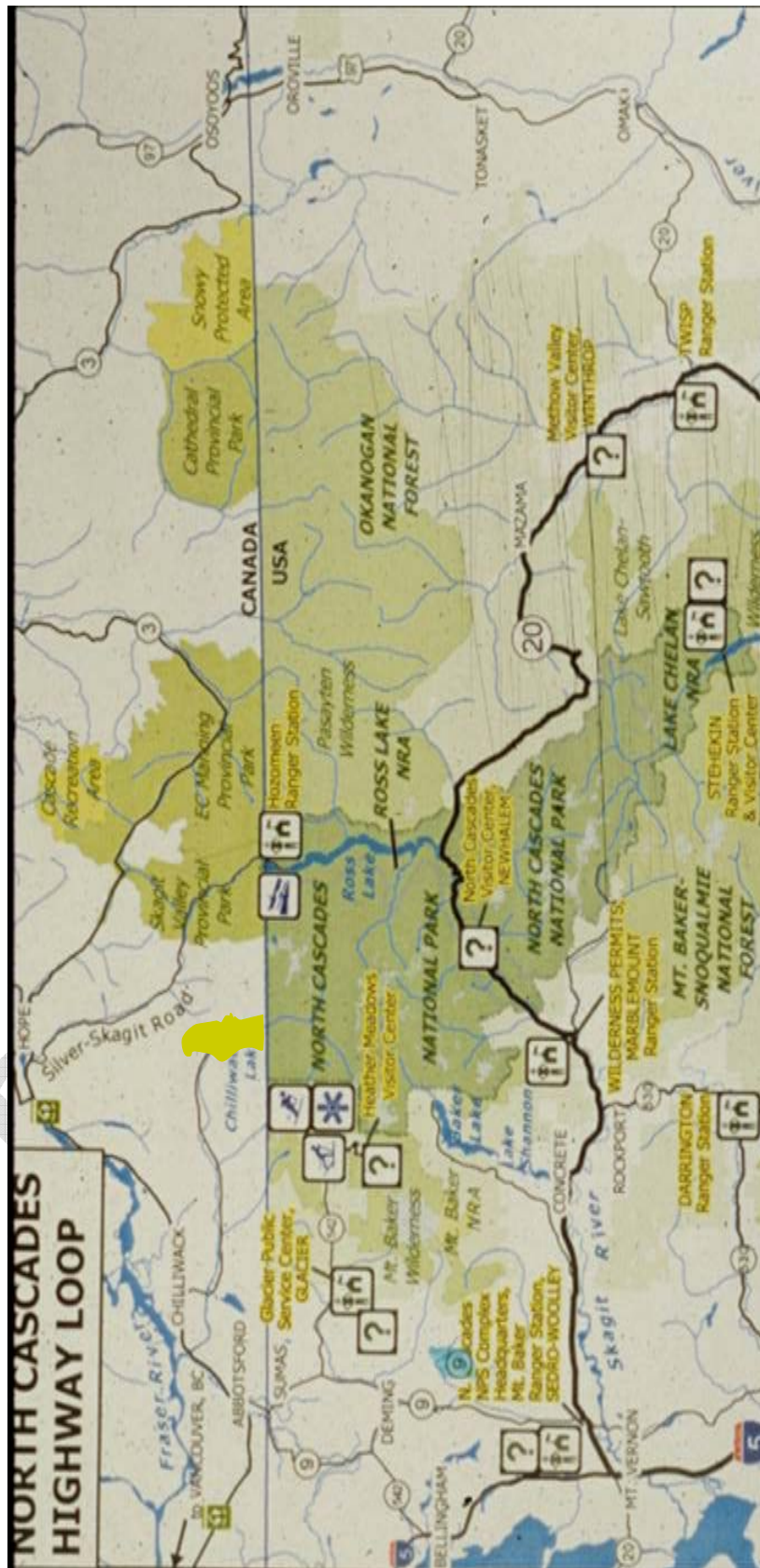


Fig. 2 Cross-border Contiguous Protected Areas

1.2 BIOGEOGRAPHY

The Skagit Valley lies between the wet, moderate climate of the western slopes of the North Cascade Mountains and the dry, more extreme climate of the eastern slopes. The Skagit watershed acts as a transition zone between these two climate types and their associated biological communities. The overlap of eastern and western species, the great variation in elevation from glacier-tipped peaks to low, lush valley bottoms, patches of old-growth and variation in local microclimates result in a rich diversity of wildlife in the watershed. The north-south orientation of the Skagit also allows for species at the northern or southern edges of their ranges to disperse along the valley. Five of British Columbia's fourteen biogeoclimatic zones are found within the Skagit watershed. These are:

Coastal Western Hemlock

Mountain Hemlock

Alpine Tundra

Interior Douglas Fir

Engelmann Spruce Subalpine Fir

The Skagit watershed provides important breeding habitats, feeding grounds, wintering ranges and migration routes for the great variety of wildlife that utilize the area. Approximately 240 species of birds, 70 species of mammals, 15 species of reptiles and amphibians and 8 species of fish have been recorded within the Skagit watershed (Armstrong 2007). Nearly 50 red and blue listed species at risk are known to use the watershed, as well as several species of regional significance.¹

1.3 HISTORICAL USES OF THE WATERSHED

Evidence of human use of the Skagit watershed dates back at least eight thousand years. Several First Nations have associations with the region, most notably the Sto:lo, the Nlaka'pumax (Thompson), the Upper Similkameen and the Stuwix (Nicola). Various resources were harvested from the watershed and the area was used as a meeting place between coastal and interior peoples to trade goods.

European use of the area began with fur trappers. Prospectors used trails through the Skagit Valley on their way to various gold strikes and other mining sites in the watershed and in the interior of BC and WA from the mid 1800's through the early 1900's. A few attempts were made at ranching in the valley, but were short-lived. The construction of Ross Dam in the 1940's led to the clearing of the valley bottom in preparation for flooding Ross Lake Reservoir in the early 1950's and opened up the watershed to logging

¹ Red listed species are species of the most critical concern in British Columbia. Blue listed species are not of the immediate concern of red listed species, but are particularly vulnerable to declining numbers based on human activities and/or life history patterns. Information on species at risk in British Columbia, including an explanation of the ranking system, can be found on the Ministry of Environment's Endangered Species and Ecosystems website (See Reference section).

via the Silver-Skagit Road from Hope. The Hope-Princeton Highway (Highway 3), crossing the northern part of the watershed, was completed in 1948. This highway formed an important link between the Fraser Valley and the central interior of the province. These roads also opened the watershed to increased recreational use.

1.4 CURRENT USES OF THE WATERSHED

Today, the principal human use for the majority of the Skagit watershed is recreation. Recreational opportunities are focused in the protected areas managed by BC Parks, but also include areas managed by MTSA, MOFR and FVRD. Recreational uses include hiking, wildlife viewing, camping, fishing, boating, hunting, skiing, horseback riding, snowmobiling and using motorized off-road vehicles.

Timber harvest occurs in the watershed on Crown land outside the protected areas. A number of mineral claims also exist in the watershed, with activity concentrated mostly in the Silverdaisy area (the “donut hole” surrounded by Skagit Valley and E.C. Manning Provincial Parks). A granite quarry also operates just outside the entrance to Skagit Valley Provincial Park. There are three traplines located wholly or partially within the watershed and one guide outfitter territory. At the time of writing, one angling guide holds a Park Use Permit to guide on the Skagit River. MOE is currently considering options for opening the Skagit River to additional angling guide opportunities.

The private residential community of Sunshine Valley is located in the northwest corner of the watershed along the Sumallo River. The development ownership has recently changed hands and plans are being made for expansion.

Road access into the Skagit watershed is still limited to Highway 3 and the unpaved Silver-Skagit road. Smaller side roads used for timber and mineral extraction extend from these roadways in some of the unprotected parts of the watershed. Highway 3 continues to be one the main routes from the Fraser Valley into the interior of the province and experiences high traffic volumes at all times of year. The Silver-Skagit road is in fairly good condition and is generally open 3 seasons of the year. During winter much of the road is not maintained and snow usually prevents vehicle traffic. A substantial amount of snowmobile use occurs on the Silver-Skagit road during this time.

2.0 DEVELOPMENT OF THE SKAGIT WATERSHED FISH AND WILDLIFE MANAGEMENT PLAN

Multiple different management plans address fish and wildlife in parts of the Skagit watershed. These plans include the *Ecosystem Plan: E.C. Manning Provincial Park, Skagit Valley Provincial Park & Cascade Recreation Area* (Summit Environmental Consultants 2003); the *Management Plan for E.C. Manning Provincial Park and*

Cascade Recreation Area (MOE 2004); the *Silverdaisy Integrated Management Plan* (MEM *et al.* 1998); and the *Recovery Plan for Grizzly Bears in the North Cascades of British Columbia* (North Cascades Grizzly Bear Recovery Team 2004). However, no plan addresses the watershed as a whole and parts of the watershed are not currently identified in any of the plans. The Upper Skagit Watershed Fish and Wildlife Management Plan (USWFWMP) strives to integrate the relevant key points from these previous plans and to provide management guidelines for any activities to be initiated within the watershed in British Columbia. Where a large volume of information in another document is directly relevant to the USWFWMP interested readers are given direction to consult the primary source rather than repeating expansive amounts of text. The USWFWMP aims to be a manageable size for easy use while providing references to specific documents for readers that require more detailed information.

This plan is based on information compiled from various scientific reports, MOE surveys and interviews with MOE biologists and BC Parks staff. A draft plan was presented to interested stakeholders at two public consultation meetings in the winter of 2008. Public stakeholder groups for this plan include conservation organizations, hunter and angler associations, hunting guide outfitters, angling guides, First Nations with ties to the watershed, horseback riding groups, off-road vehicle users, and individual recreationists. The plan focuses on species that are of current management concern in the watershed. It will be reviewed on a regular basis (every 5 years), with the addition of new species and update of the management strategies as required.

Funding for the development of this fish and wildlife management plan was provided by the Skagit Environmental Endowment Commission (SEEC). The Commission and the endowment fund it manages resulted from the 1984 treaty between the US and Canada and agreement between the City of Seattle and the Province of British Columbia to maintain the current height of Ross Dam and area flooded by the Ross Lake Reservoir until 2064.

3.0 MANAGEMENT CONCERNS

Concerns related to fish and wildlife management in the Upper Skagit watershed range from broad concerns which affect multiple species to specific concerns related to the management of individual species or species groups.

3.1 FISHERIES

The Skagit and Sumallo Rivers are popular destinations for anglers in the Lower Mainland of BC. To sustain a quality fishing experience on the Skagit River, while providing access to a variety of user groups, management tools are important to prevent crowding, maintain healthy fish populations and to mitigate conflicts amongst anglers and between anglers and other park users. The wilderness atmosphere of the Skagit River is one of its greatest assets and is an important quality to preserve.

A catch and release fishery was implemented on the Skagit and Sumallo Rivers in 1992 in response to decreasing catch rates and increasing angler use. This action appeared to result in a significant increase in fish populations and greater angler success (Burrows and Neuman 1995a, Burrows and Neuman 1995b, Scott *et al.* 1995). Rainbow trout (*Oncorhynchus mykiss*) is the most commonly caught fish in both the river and reservoir. Ross Lake Reservoir also supports bull trout (*Salvelinus confluentus*), a species of char listed as Threatened by the U.S. Fish and Wildlife Service and Blue Listed by MOE. The Skagit River supports a second Blue listed char species, Dolly Varden (*Salvelinus malma*), bull trout and bull trout-Dolly Varden hybrids (McPhail and Taylor 1995). There is also historical mention of cutthroat and westslope cutthroat trout in the river. It is possible that small populations of these fish persist in the Skagit or Sumallo, however their presence has not been confirmed since the early 1970s (Neuman 1988, Triton, in preparation). Redside shiners (*Richardsonius balteatus*) are suspected to have been introduced into Ross Lake Reservoir and the population appears to be increasing. It is not known what impact the shiner population is having or will have on the native fish populations. Shiners are known to compete with rainbow trout for food. Some strains of rainbow trout will prey on smaller fish, such as shiners, as adults. At the time of writing, it was not known if the rainbow trout or bull trout in Ross Lake are feeding on the redside shinners.

The trout and char in the Skagit watershed exhibit varied life history strategies. Some trout and char are year-round river residents. Others have an adfluvial life history, meaning they grow and mature in Ross Lake Reservoir and migrate into the Skagit River or other tributaries to spawn (Nelson 2006). These fish may spend many weeks in the river system before returning to the reservoir. In this interconnected system, population numbers in the river may be affected by conditions in the reservoir and vice versa. Ross Lake Reservoir straddles the international border, making coordination between Washington and British Columbia essential for successful management of fish stocks. Past cooperation has standardized fishing regulations on the reservoir, including open season; species catch and size limits; and permissible tackle. Updated fishing regulations are published for British Columbia every year and are available at MOE offices, on the MOE Fish and Wildlife Branch website (see References) and at tackle supply stores.

The fishable parts of the BC Skagit can be divided into three sections (Fig. 3). The “lower section”, the Skagit between Ross Lake Reservoir and Silver Tip Campground in Skagit Valley Provincial Park, is the most popular part of the Skagit for fishing. It can be accessed from Ross Lake and Silver Tip campgrounds, from 6 day-use parking areas and other locations along the Silver-Skagit Road. The “upper section”, from Silver Tip Campground upstream to the confluence with the Sumallo River, is accessed from Silver Tip campground and via the Silver Skagit Trail that runs along the eastern bank of the river. Entrances to the trail are at Sumallo Grove Day Use area, just off Highway 3 in Manning Provincial Park, and at 26 Mile Bridge on the Silver-Skagit Road in Skagit Valley Provincial Park. The third section, comprised of the Sumallo River upstream from its confluence with the Skagit, runs adjacent to Highway 3 and is accessed from multiple

pullouts on the side of the highway. The Skagit upstream of its confluence with the Sumallo is not generally fished.

The varying characteristics of each section of river provide different fishing experiences. The Sumallo has higher angler capacity with a shorter visit time compared to the mainstem Skagit (Scott Resources 2008). The resulting high rate of angler turnover helps to avoid crowding on the Sumallo, although the location beside a busy highway makes the experience of fishing this river quite different from the quiet, secluded experience of the Skagit. The physical attributes of the three sections also differ from one another. The Sumallo is a slower moving, meandering river. The Skagit is a faster flowing river, the upper section being on average considerably narrower than the lower section.

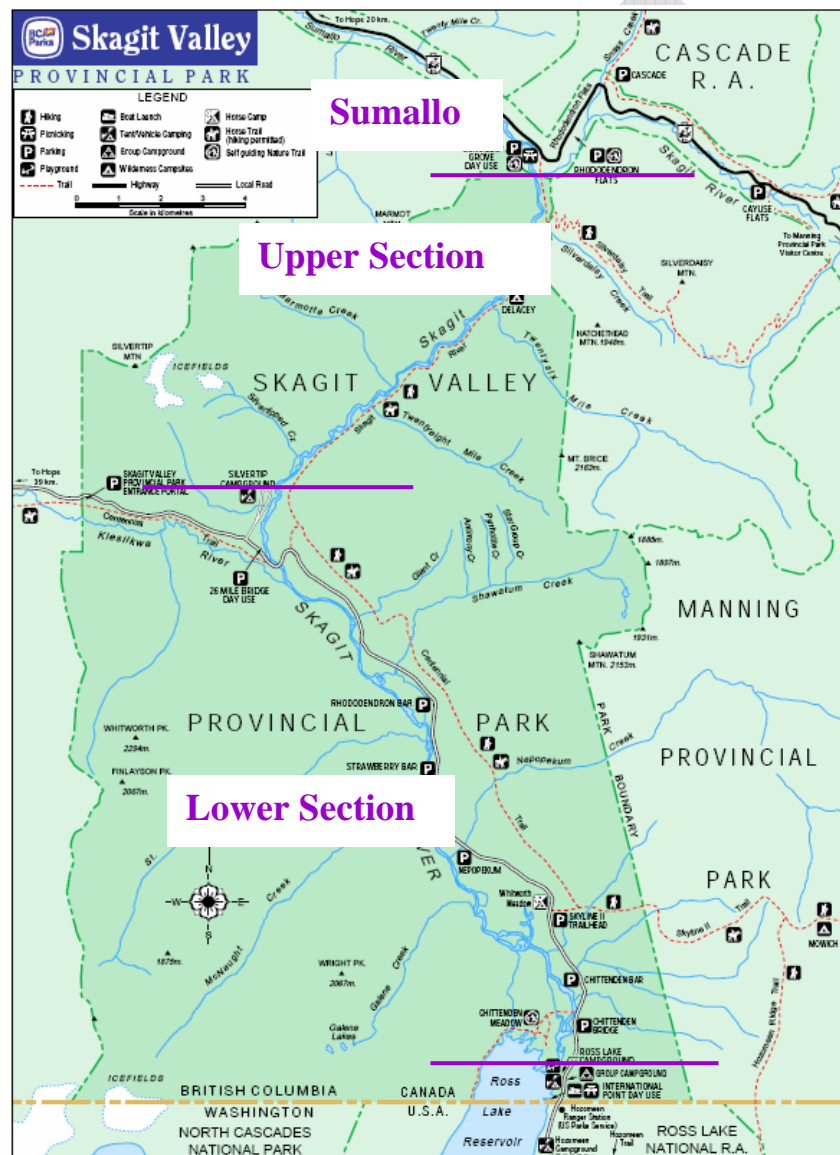


Fig. 3 Division of River Fishing Sections

3.1.1 Fish Population Monitoring

Anecdotal information suggests that fish stocks in the reservoir may be declining. Given the age of the reservoir (just over 50 years) this is not unexpected. When a reservoir is first flooded there is a large release of nutrients into the water from the newly submerged soil and vegetation. Other reservoirs have shown that these nutrients deplete over time and productivity begins to decline (Pers comm. Jesson February 2008). In addition, it is possible that the introduced redbside shiners could have a negative impact on the trout and char populations in the reservoir. In the absence of current fish stock assessment data it is difficult to examine how these factors are affecting the trout and char populations. Current population data for the river system is also lacking.

Management Concern: The current status of the fish stocks in the Sumallo River, Skagit River and Ross Lake Reservoir are unknown. Anecdotal information suggests the populations in the river are relatively stable, while those in the reservoir may be declining.

Strategies:

1) Regular fish stock assessments need to be conducted on the Skagit and Sumallo Rivers and in Ross Lake Reservoir. If possible, surveys should be coordinated with the WDFW to include the Washington side of the reservoir. Scott Resources (2007) recommends that assessments be implemented for five consecutive years to cover a complete rainbow trout life-cycle. Regular monitoring of fish stocks should then be done every 3-5 years.

2) Studies should be undertaken to investigate the impacts of the redbside shiner population on the trophic level dynamics in Ross Lake.

3.1.2 Reservoir Catch Regulations

Uniform fishing regulations are in place across the international border for Ross Lake Reservoir. The reservoir fishery is a limited kill fishery. As stated above (3.1.1), the native fish in Ross Lake Reservoir are facing a suspected decline in nutrient levels and an expanding population of redbside shiners.

Management Concern: Current regulations governing catch limits in the reservoir may be insufficient to protect fish stocks. Anecdotal evidence suggests that fish stocks in Ross Lake Reservoir may be declining. Nutrient changes due to reservoir ageing and biological changes from the growing population of redbside shiners may be impacting trout and char populations in the lake.

Strategy: Depending on the findings of a fish stock assessment (3.1.1), fishing regulations may need to be adjusted to better manage the fish stocks in Ross Lake Reservoir. The Washington Department of Fish and Wildlife needs to be

consulted if any changes in regulations are considered. Regulations for the reservoir should be kept uniform across the border.

3.1.3 Habitat Protection

Fish are dependent upon specific habitats for spawning, rearing, feeding and holding. It is important to ensure that critical fish habitats are protected. Fish habitat protection falls under the authority of the federal *Fisheries Act*.

Management Concern: Protecting trout and char spawning, rearing, feeding and holding habitats.

Strategies:

1) Sweepers and log jams provide important fish habitat and should not be removed from the river unless they represent a significant safety concern. Vegetative cover and woody debris are important habitat features over holding pools and such cover should not be damaged.

2) If further day-use access points are developed for the lower section of the Skagit River, or any other activities that have impacts on the river, they should avoid disturbance to important fish habitat. Important char habitat has been identified in *Fish Habitat Assessment and Char Utilization for the Upper Skagit River Watershed, BC* (Murray and Gaboury 2005).

3) If, in the future, MOE biologists feel that human intervention is required to assist the Skagit River populations of Dolly Varden and/or Bull Trout, recommendations for char habitat improvements on the Skagit River are available (Murray and Gaboury 2005). Both char species are Blue listed in British Columbia.

3.1.4 Guided Angling

In addition to an Angling Guide Licence, a Park Use Permit is required for angling guides to operate within a provincial park². The mainstem Skagit River in BC is located wholly within Skagit Valley Provincial Park and E.C. Manning Provincial Park. There is currently one angling guide with a Park Use Permit to operate on the Skagit River.

Management Concern: Sustainable angler use of the Skagit River that provides a quality angling experience for various user groups. The most recent information suggests there may be available capacity on the river. An overall provincial trend of decreasing angler participation has been documented in recent years.

² All commercial ventures operating within a provincial park require a Park Use Permit.

Strategy: Based on current capacity data, MOE is considering options for opening the Skagit River to additional angling guides on a limited trial basis. If such plans are implemented the following conditions will apply:

- Permits will be issued on a year-to-year basis with no guarantee of renewal pending assessment of how guiding is impacting the overall fishing experience available on the Skagit.
- A limited number of angler days will be available to permittees based on expected available capacity.
- Guiding will be restricted to week days to avoid increased use during busier times on weekends.
- Permits will only be granted to guides who demonstrate responsible practices.
- An angler survey will be conducted to determine how guiding is impacting the experience of anglers on the river.
- The permitting process and permit terms may be amended based on information collected during future angler surveys or to protect sections of the river that provide critical habitat for sensitive species such as harlequin ducks.

3.1.5 Angler Monitoring

The most recent angler survey for the Skagit River was conducted in 2002. This survey only included the Skagit and Sumallo Rivers, not Ross Lake Reservoir. Previous surveys were conducted in 1986, 1990, 1992 and 1994. Angler surveys allow MOE to monitor angler satisfaction, effort and success. This information helps ensure the quality of the angling experience on the Skagit River is maintained, and provides information on fish populations through reporting of species caught and catch rate.

Management Concern: **Monitoring angler satisfaction, catch rate, and species caught.** The most recent angler survey completed in the Skagit watershed was in 2002 and did not include anglers on Ross Lake Reservoir. If the Skagit watershed is opened to guided angling it will be necessary to monitor for changes related to angling guide operations in order to manage for a balanced experience for all users.

Strategy: An angler creel survey needs to be conducted that includes the Skagit and Sumallo Rivers and Ross Lake Reservoir, using past methodologies where applicable. If possible, such surveys should be coordinated with WDFW biologists and conducted concurrently on both sides of the border. The initial survey should be conducted for two consecutive years in order to re-establish base-line data. Surveys should then be repeated every 3-5 years.

3.1.6 River Access

As described above (3.1), access to the lower section of the Skagit River is available from Ross Lake and Silver Tip Campgrounds, several day-use parking areas and a limited number of places from the Silver-Skagit Road. The upper section of the Skagit River is accessed from the Skagit River Trail or Silver Tip Campground and the Sumallo is accessed from Highway 3.

Management Concern: The locations of day-use access points on the lower section of the Skagit River are not evenly spaced, meaning certain sections of the river may be underutilized by anglers. New access points could help to redistribute anglers and avoid crowding near existing access points. The nature of the access available on the upper section of the Skagit and on the Sumallo precludes any changes to access in these areas.

Strategy: If an increase in day-use access is identified as a need in the future, two possible locations for additional day-use parking access points have been identified on the lower section of the Skagit River (Scott Resources 2008). Any development of these sites would be subject to an environmental assessment and must be in accordance with the other strategies laid out in this plan.

3.1.7 Delineation of Areas with Different Regulations

Fishing regulations vary between Ross Lake Reservoir and the Skagit River. The river is a catch-and-release only fishery, whereas limited harvest of rainbow trout is allowed on the reservoir. The Skagit River Cottonwoods Ecological Reserve encompasses a portion of the upper section of the Skagit River. There is no fishing permitted within ecological reserves. It is therefore important for anglers to know when they have crossed the legal boundary between the lake and the river, and where the boundaries of the reserve are located.

Management Concern: Clearly identified regulation boundary lines. Current signage denoting the boundary between Ross Lake and the Skagit River is not clear and leaves many anglers uncertain where the boundary lies. The boundaries of the Skagit River Cottonwoods Ecological Reserve are marked on the Skagit River Trail but not on the river.

Strategy: Post easily understood sign(s) in easily seen location(s) at the legal boundary between Ross Lake and the Skagit River. Post signs marking the boundaries of the Cottonwoods Ecological Reserve on both sides of the river where anglers walking along either bank would easily see them. These signs (and the ones along the trail) should include a reminder that fishing is not permitted in the reserve.

3.1.8 Introduced Aquatic Species

Ross Lake Reservoir is a popular destination for fishing and power boating. In most cases, the boats that are used for these activities on the reservoir will also be used elsewhere in British Columbia and/or Washington. Across North America there have been numerous exotic aquatic species transferred between bodies of water by unknowing boaters. A well documented example of this is the spread of the zebra mussel in the Great Lakes region and beyond. Various fish species are also frequently introduced intentionally. Redside shiners have already been introduced to Ross Lake Reservoir, possibly as the result of their illegal use as live bait. These small minnows now exist in large numbers in the shallow regions of the lake. It is unknown what effect the shiner population will have on the other fish species inhabiting Ross Lake Reservoir, but evidence from other shiner introductions suggests they may represent significant competition for food. The introduction of non-native species to any ecosystem has the potential to have serious negative impacts on endemic species and the overall balance of the ecosystem.

Management Concern: The introduction and spread of non-native species to Ross Lake Reservoir and the Skagit River watershed. This is a significant cross-border management concern, as species introduced to one side of the border will easily disperse across the boundary.

Strategies:

- 1) Monitoring for exotic species should be done on a regular basis so that management tactics can be developed as soon as new species are detected. A “Quick Response Protocol” should be developed jointly between US and BC agencies.
- 2) Improved signage should be posted reminding boaters to thoroughly clean their boats and motors before moving them to another location to reduce the chances of unintentionally spreading aquatic species from one body of water to another.
- 3) Educational outreach materials should be developed promoting boat cleaning and discouraging the use of live bait (prohibited by both BC and Washington regulations) and the unlawful intentional transport of fish between different bodies of water. MOE has recently developed an exotic species policy which includes a public awareness campaign.

3.2 WATER QUALITY

Highway 3 runs along the Sumallo River and very upper reaches of the Skagit River. The section of highway above the Skagit experiences regular motor vehicle accidents which result in the release of harmful fluids onto the road and the scattering of wreckage. Water in the Skagit is susceptible to contamination by runoff from the highway and debris that

enters the river. Salt and chemical snow control agents also enter the rivers from runoff and traffic spray. Organic compounds and heavy metals may contaminate the invertebrate food sources of fish, ducks, and other wildlife. Contaminants stored in fat tissues lead to bioaccumulation and biomagnification of these substances higher in the food chain.

Management Concern: Pollutants entering the Skagit and Sumallo Rivers from Highway 3. Water contamination can allow toxins to enter the food web and bioaccumulate at higher trophic levels.

Strategy: SEEC is in the process of gathering baseline water quality data. The results of this study are currently in press. Water quality should continue to be monitored on a regular basis and should be coordinated with monitoring on the US side of the border.

3.3 ACCESS

Management concerns related to access have implications for a wide range of wildlife. The types of access available in parts of the Skagit watershed include road vehicles, all terrain vehicles (ATVs), boats, mountain bikes, snowmobiles, equestrian and pedestrian. Road access has the greatest impact on an area, fragmenting habitat, acting as a barrier to some species, creating disturbed corridors for the spread of insects, diseases and exotic species, causing stream sedimentation and facilitating human disturbances and impacts including off-road vehicle use, poaching, and vehicle-related wildlife deaths. While the impact of trails is less significant, soil compaction and erosion, and disturbance of refugia are among the negative effects that trail access can have on some wildlife species. *Access Management in British Columbia: A Provincial Overview* (Hamilton and Wilson 2001) gives a detailed breakdown of the impacts various forms of access can have on wildlife populations and provides an extensive list of research papers related to these Management Concerns.

3.3.1 Road Construction

Management Concern: Expanded road network in the watershed. Logging and mining activities on the Crown land outside protected areas may require building roads to access and remove the desired resources. A number of logging roads already exist in the western portion of Crown land. Access roads also exist in the Silverdaisy “donut hole” area. It is unlikely that new roadways would be required in the protected areas.

Strategies:

- 1) For resource extraction:
 - Roadways should be decommissioned and rehabilitated when they are no longer in use.
 - Lockable gates should be used where appropriate to prevent motorized access by the public.

- Road construction, both size of road and extent of roadways, should be kept to a minimum.

These goals have already been set out for the Silverdaisy area in the *Silverdaisy Integrated Management Plan* (MEM *et al.* 1998).

- 2) There should be no net increase of roadways in protected areas (i.e. if a new roadway is constructed another should be decommissioned)

3.3.2 Trail Construction

Management Concern: **Expanded trail network in the watershed.** Increased recreational use of the watershed may put pressure on the parks and recreation area managers to increase the number of trails available for hiking, horseback riding, cross-country skiing, mountain biking, etc.

Strategy: All trails must be carefully routed to avoid important wildlife habitat features such as breeding/nesting sites, denning sites, riparian areas, mineral licks, important feeding areas, roosting/staging sites, thermal refugia, etc for any time of the year when the trail will be used. Route planning for new trails should involve consultation of relevant documents and an MOE biologist familiar with the Skagit watershed in order to avoid sensitive habitats and critical habitat features. Allowable uses for a trail must also be given careful consideration as different activities have varying degrees of impact on an ecosystem. Documents that should be consulted include:

- The *Ecosystem Plan: E.C. Manning Provincial Park, Skagit Valley Provincial Park and Cascade Recreation Area* (Summit Environmental Consultants 2003) details Environmentally Sensitive Areas (ESAs) and Valued Ecosystem Components (VECs³) for the protected areas.
- *Distribution of Important Seasonal Habitats for Mountain Goats and other Wildlife in the Skagit River Watershed, British Columbia*. (Jex's 2007) includes observations of important habitat features for wildlife that were made while conducting the mountain goat surveys.
- *Preliminary Bear Hazard Evaluation E.C. Manning and Skagit Valley Provincial Parks and Cascade Recreation Area, B.C.* (McCrary Wildlife Services Ltd. 2003) and the *Recovery Plan for Grizzly Bears in the North Cascades of British Columbia* (North Cascades Grizzly Bear Recovery Team 2004) identify important grizzly habitat.

³ VECs are important habitat features

3.4 WILDLIFE TREES

Wildlife trees are standing dead or dying trees that provide unique habitat features important to a variety of wildlife species. These trees are also frequently referred to as snags. Wildlife trees that are still living may continue to do so for decades and may stand for decades more after they are dead. Wildlife trees have large, often hollow, trunks with large branches. These trees provide nesting and roosting sites, food resources and perching sites to a wide variety of birds, mammals and invertebrates. Important features of wildlife trees include cavities, loose bark, broken tops, insect prey populations and bare crowns/branches. Wildlife trees are a limited resource in a forest, inspiring competition amongst individuals of both the same and different species for use of the resource. 66 different wildlife species in British Columbia are known to be significantly dependent on wildlife trees. For many species, the properties provided by these trees cannot be replicated or substituted by another habitat component. For these species, failure to find an appropriate wildlife tree means they will not reproduce and may not survive (MOF and MELP 2000, Harris 2001, Stone *et al.* 2002, MOF 2005). An excellent reference giving a thorough treatment of the subject is *Wildlife and Trees in British Columbia* (Fenger *et al.* 2006).

Management Concern: Retention of wildlife trees. Wildlife trees are a limiting resource for many different species. These trees are also often considered a danger because they are dead or dying and therefore more likely to fall. Park Facility Operators are required to conduct yearly hazard tree assessments in campgrounds and other front-country areas of parks and to remove trees from areas where there is high potential for them to cause structural damage or human harm if they were to fall. Snags may also be removed during logging practices.

Strategies:

- 1) Snags should be left standing whenever it is safe to do so. New structures should not be built in areas where there is a current risk of damage or injury from a high value wildlife tree. Any new trail construction should also be a safe distance from existing snags, both for protection of trail-users and to avoid disturbances to the wildlife using the snag.
- 2) Guidelines for wildlife tree retention in the forestry industry are found in *Wildlife Tree Retention: Management Guidance* (MOF 2005). This document is available on the Wildlife Tree Committee page of the website of the Forest Practices Branch, Ministry of Forests and Range (See Reference section).
- 3) Habitat enhancement/restoration can be done by artificially creating snags in safe locations to replace snags that have been removed as hazard trees. Guidelines for creating snags can be found on the website for the California Forest Stewardship Program (See Reference section).

3.5 HARLEQUIN DUCKS (*Histrionicus histrionicus*)

The harlequin duck is a yellow listed S4⁴ species in British Columbia with important breeding habitat located along various fast moving stretches of the Skagit and Sumallo Rivers (Freeman and Goudie 2004). A study conducted between 2000 and 2003 suggests that this population of harlequins may be experiencing a decline in population (Freeman and Goudie 2004). Compared to other ducks, this species has relatively low productivity and can be sensitive to disturbance during the breeding season from early spring to late summer (BC CDC 2008).

3.5.1 Population Trends

Management Concern: The Skagit population of harlequin ducks may be showing signs of decline (Freeman and Goudie 2004). The study of harlequins on the Skagit River was only four years in length which is relatively short to be truly indicative of long-term trends. Better management practices can be developed with data from a larger time scale.

Strategy: A long-term monitoring project of the harlequin population should be initiated using the standard protocol of Freeman and Goudie (2004).

3.5.2 Disturbance

Management Concern: Disturbance of harlequins can have many different negative impacts on their survival and reproduction. These impacts include breakdown of pair bonds in spring; disturbing incubation; disturbing feeding and resting patterns; separation of adults from ducklings leaving them more vulnerable to predators; and increasing energetically costly behaviours (e.g. flying). Disturbances may be caused by individuals who are fishing or hiking, but especially by unleashed dogs. Though not currently popular on the Skagit, rafting and kayaking would also cause considerable disturbance to harlequins (see 3.5.4 below).

Strategies:

1) Post signs:

- Dogs on Leash regulation (dogs must be on a leash in provincial parks; the river is within parks) including the rational of protecting wildlife from dogs (and dogs from wildlife), and highlighting the effects of disturbances on ducks.
- Key locations: both ends of the Skagit River Trail (Sumallo Day Use Area, trail entrance on the Silver-Skagit road and Twenty-Six Mile Day Use Area), Silvertip and Ross Lake Campgrounds.

⁴ S4 species fall short of the criteria for blue listing, but are experiencing pressures and/or have life history patterns which can make them vulnerable to population declines (see Species Ranking in British Columbia available on the MOE Endangered Species and Ecosystems website for an explanation of species listings).

- Boundaries of the Skagit River Cottonwoods Ecological Reserve should be clearly marked on the trail and on the river, noting that no fishing is permitted within the reserve.
- 2) If early season disturbance (prior to mid-July) increases, changes in regulations could help protect harlequin adults and ducklings:
- If leash compliance is low, dogs could be prohibited on the Skagit River trail between April and August.
 - If early season angling⁵ increases, opening could be delayed on certain sections of the river (those important to harlequins) by two weeks. Currently, low angler use of the river early in the season (the river level may still be quite high for fishing at this time of year) allows ducklings to reach a sufficient size before harlequin families are subjected to the stress of disturbance from anglers (Freeman and Goudie 2004).
 - If angling guides are operating on the Skagit, they could be restricted from using sections of the river which have important harlequin habitat.

The state of disturbances to harlequin ducks should be reassessed during future reviews of this plan and additional management strategies implemented as required.

3.5.3 Awareness/Education

Management Concern: Many members of the public are not aware of the presence of harlequin ducks in the Skagit watershed or of their provincial status and vulnerability to disturbance.

Strategies:

- 1) Develop interpretive signage explaining the harlequin's unique life history patterns, provincial and national rankings and factors which make them vulnerable. Signage could be posted at the trail heads of the Skagit River Trail and in the campground areas.
- 2) Harlequin viewpoints could be developed if it was felt that observers would be respectful of the ducks and not cause increased disturbance. Viewing blinds could be constructed to encourage unobtrusive observation (appropriate locations available in Freeman and Goodie (2004) Map 2 section 4.5).

3.5.4 Rafting/Kayaking

Management Concern: If rafting or kayaking become popular on the Skagit River these activities would cause considerable disturbance to harlequins. Currently, these are not common activities on the upper Skagit River.

⁵ Fishing season opens July 1.

Strategy: Future reviews of this plan and all plans affecting the river (e.g. park management plans) should evaluate the use of the Skagit for rafting and kayaking. If these activities show a marked increase in popularity it may be necessary to restrict rafting and kayaking between April and September. No commercial recreation tenures should be granted for rafting or kayaking.

The current location and level of use on the Skagit River Trail does not seem to present a problem to harlequins so long as dogs are kept leashed and not permitted to disturb ducks (Freeman and Goudie 2004) and hikers remain on the trail.

3.6 MOUNTAIN GOATS (*Oreamnos americanus*)

The mountain goat is another S4 listed species in BC. The population found in the Skagit watershed declined significantly following the construction of the Hope-Princeton Highway (Highway 3), likely due to increased disturbance and the accessibility the roadway gave hunters and poachers. The highway was completed in 1948; the last open season for goat hunting in the area was 1969-70. The mountain goat is a species that lives in extreme conditions and has slow population growth. The Skagit watershed population has not recovered since the legal hunting season in this area was closed nearly forty years ago. A mountain goat winter range plan for the Fraser Timber Supply Area⁶ was approved in March 2008. Goat winter ranges within the Fraser TSA will be designated under the *Forest and Range Practices Act*.

3.6.1 Habitat Protection

Management Concern: Any loss, alteration or disturbance to their habitat can have a significant impact on the long-term persistence of the mountain goat population. Like many other species that live in extreme environments, mountain goats are constrained by specific life history requirements that limit their usable habitat and make them particularly sensitive to habitat alteration.

Strategies:

- 1) Any new developments, including trails, or other habitat-altering activities should avoid mountain goat seasonal ranges, especially areas with mineral licks or snow interception/thermal refugia. Mountain goat winter, natal and summer ranges in the Skagit watershed have been identified (Jex 2007). Many of these ranges are protected within Skagit Valley and E.C. Manning Provincial Park. Measures to protect critical habitat under the Fraser TSA Mountain Goat Winter Range Plan include no timber harvesting, no road construction and no pesticide use.

⁶ The Crown land in the Skagit watershed outside the protected areas falls within the Fraser TSA.

- 2) Where practical, existing recreational trails and facilities located in mountain goat seasonal ranges should be rerouted/relocated. Rock climbing activities should be discouraged within these areas.

3.6.2 Motorized Vehicle Disturbance

Management Concern: The use of helicopters, snowmobiles, All Terrain Vehicles (ATVs) or other motorized vehicles in or adjacent to mountain goat winter and natal ranges cause significant disturbances to the animals and may reduce their survivorship and reproductive success (Foster and Rahe 1983, Joslin 1986, Côté 1996).

Strategy: Motorized vehicles should not be used off provincial roadways within 1.5km of winter ranges from the end of October through the end of May or within 1.5km of natal ranges from the beginning of May through the beginning of July. Aircraft should maintain a 2.0km line-of-sight distance from these critical habitats. Within the protected areas, an operations timing window should be set prohibiting motorized vehicle use in accordance with these parameters and incorporated into the appropriate Park management plans. Locations of known mountain goat ranges are found in *Distribution of Important Seasonal Habitats for Mountain Goats and other Wildlife in the Skagit River Watershed, British Columbia* (Jex 2007). Organizations for motorized vehicle operators, such as helicopter companies and ATV and Snowmobile clubs, should be provided with educational information on areas they should avoid.

3.7 GRIZZLY BEARS (*Ursus arctos*)

Grizzly Bears are a Blue-listed species in British Columbia. The North Cascades Grizzly Bear Population Unit, which includes the Skagit River watershed, has a very low population (fewer than 25 animals in 9,800km²) and is provincially designated as Threatened (the alternative population designation is Viable). This population straddles the border into Washington where the species is listed as threatened by the U.S. Fish and Wildlife Service (federal) and endangered by the Washington Department of Fish and Wildlife (state). MOE has designated 14 Grizzly Bear Wildlife Habitat Areas (total 1607ha) in the North Cascades Grizzly Bear Population Unit, with another 7 (total 2,317ha) proposed.

Management Concern: Conservation and recovery of the North Cascades Grizzly Bear population.

Strategy: The USFWMP will adhere to the approved *Recovery Plan for Grizzly Bears in the North Cascades of British Columbia* (North Cascades Grizzly Bear Recovery Team 2004). This is an extensive document that outlines the history of Grizzly Bears in the

North Cascades of BC, the reason for their decline and current threats to their population, and presents a comprehensive recovery strategy. A link to the plan is available on the MOE Endangered Species and Ecosystems Explorer website (see References section). This plan must be consulted in the case of any activity or event that may impact grizzly habitat or recovery success in the Skagit River watershed. The Grizzly Bear Recovery Team should also be contacted (see Appendix 2) to determine the current status of the plan's direction and implementation. *Preliminary Bear Hazard Evaluation E.C. Manning and Skagit Valley Provincial Parks and Cascade Recreation Area, B.C.* (McCrory Wildlife Services Ltd. 2003) should also be referenced in relation to Grizzly Bears in the protected areas of the watershed.

The principal management objectives identified in the *Recovery Plan for Grizzly Bears in the North Cascades of British Columbia* are:

- a) Provide habitat of sufficient quantity and quality to support a Viable population
- b) Prevent population fragmentation and maintain genetic diversity
- c) Increase the number of Grizzly Bears
- d) Minimize the potential for Grizzly Bear/Human conflict
- e) Minimize Human-caused mortality of Grizzly Bears
- f) Increase scientific and public knowledge of, and support for, Grizzly Bear recovery
- g) Facilitate interagency cooperation and management

Key management strategies of particular relevance to the Skagit watershed include:

- a) Access – avoid building roads or trails within 50m of important grizzly habitat. There should be no net loss of core area by access construction (if a road into a core area is built then another road in a core area must be deactivated).
- b) Disturbance in core areas – there should be no motorized vehicle use in core areas (including helicopter landing) from the beginning of April through the end of October.
- c) Protecting key habitats – spring habitat for Grizzlies is limited in the North Cascades ecosystem and therefore is a conservation priority.
- d) Filling information gaps – the plan lists research priorities and key gaps in information that would assist with improving recovery strategies and plan implementation.
- e) Augmentation and genetic monitoring – augmentation from other grizzly bear populations is required to increase the number and genetic diversity of Grizzlies in the North Cascades Population Unit.

- f) Bear/Human interactions – preventing Bear/Human conflicts and Human-caused mortality of Grizzlies.
- g) Education and outreach – develop and implement information and education programs for local communities, First Nations, schools, stakeholder groups and the general public.
- h) Interagency cooperation – successful Grizzly recovery in the North Cascades will require a coordinated effort and support from several BC ministries, U.S. agencies and other stakeholders.

Augmentation is currently under review. Managing motorized vehicle access has been identified as one of the critical strategies for implementation.

3.8 SPOTTED OWLS (*Strix occidentalis*)

The Skagit watershed provides critical habitat for the red listed Spotted Owl. Not only is much of the watershed covered by the mature and old forest that Spotted Owls require for breeding success, the low-elevation valley also provides the best genetic link between owls in BC and Washington. The north-south dispersal of these owls is otherwise cut-off by human development/habitat depletion and high mountain peaks the birds will not cross. The leading cause of the Spotted Owl decline is habitat loss and degradation. Competition for nest sites and prey from Barred Owls, which have been expanding their range into Spotted Owl territory since the 1960's, is also thought to be having a negative impact on Spotted Owl populations (Blackburn and Godwin 2004).

Management Concern: Protection of spotted owl habitat for breeding, foraging and dispersal.

Strategy: The USFWMP will adhere to the *Spotted Owl Recovery Plan*. Most appropriate habitat for spotted owls in the Skagit River watershed has been protected in parks and Old Growth Management Areas (OGMAs). Documents with information on spotted owls are available on the Species and Ecosystems Explorer page of the MOE Endangered Species and Ecosystems website (see References section). The Spotted Owl Recovery Team should be contacted if there is any concern about an action or event affecting spotted owls or their habitat in the watershed.

3.9 OTHER SPECIES AT RISK

The Skagit River watershed provides a home to more than 40 known fish and wildlife species at risk. For many of these species, no comprehensive inventory information is available for the watershed. These species may have recovery and/or management plans

already in place or such plans may be in progress. Several other documents are available for a number of these species that outline the pressures they face and recommended management practices. The MOE Endangered Species and Ecosystems website has a species search option through the Species and Ecosystems Explorer page that provides links to these documents (see References section). Appendix 3A lists the documents that are available on this website at the time of writing for each of the species at risk found in the Skagit River watershed.

Management Concern: **Protection of species at risk.** While not all of the species at risk found in the Skagit watershed are individually addressed in this management plan, any of them may be harmed by actions that alter or disturb their habitats.

Strategy: Before planning any activity with possible impacts on a species at risk, the documents available for the species should be obtained and reviewed so this information can be incorporated into the project plans prior to the initiation of an environmental assessment. Species at Risk management must be included in any other plans affecting the Skagit watershed (e.g. park management plans). Because most wildlife species in the Skagit watershed have populations which are contiguous across the international boundary, it is key that species at risk management be coordinated with US agencies, including NPS and WDFW.

Management Concern: Inventory information is lacking for many species at risk in the Skagit watershed.

If information is not readily available then species inventory should be considered, and if conducted it must be done to accepted BC standards (Resource Inventory Standards Committee).

3.10 MULE DEER (*Odocoileus hemionus*)

Three subspecies of mule deer exist in British Columbia. Two of these, the mule deer (*Odocoileus hemionus hemionus*) and the Columbian black-tailed deer (*Odocoileus hemionus columbianus*) are found in the Skagit River watershed. Due to this range overlap, many of the deer in the Skagit watershed are hybrids between mule and Columbia black-tailed deer. Populations of these deer in British Columbia are healthy and they are among the most popular species in the province for hunting. Despite their abundance, deer face the steady encroachment of development on their habitat, especially winter range. Critical deer winter range components include moderate to steep south facing slopes at low elevations (below 1000m) where there is low snow accumulation. Old growth areas are also important where the dense canopy blocks snowfall and reduces ground accumulation. Deer winter range inventory has been completed within the Skagit parks and protected areas (Jex 2007).

Management Concern: Disturbance or alteration of deer winter range can negatively impact their winter survivorship. Good quality winter range is a limiting factor for deer.

Strategy: Avoid altering or disturbing deer winter range. Identified locations of deer winter range in the Skagit watershed can be found in Jex (2007). MOE is in the process of completing a deer winter range plan (outside of protected areas) in the Fraser Timber Supply Area; as with goats this plan will be approved under the *Forest and Range Practices Act*. Protective measures implemented on deer winter range will include restricting forest harvesting and road construction.

3.11 HUNTING AND TRAPPING

Crown land, Skagit Valley Provincial Park, and Cascade Recreation Area are open for hunting during specified open seasons. Skagit Valley Provincial Park has a shorter hunting season than the rest of M-2, the management unit in which it is located. Several traplines also operate in the watershed. Hunting and trapping regulations are updated yearly and are available from Ministry of Environment offices, on the Ministry's Fish and Wildlife Branch website (see References section), and at hunting supply stores. Guide Outfitters are permitted to operate within the watershed and are subject to species quotas for cougars and black bears. Animals with an open season for hunting or trapping in the Skagit watershed in the 2007/08 season are listed in Appendix 3B. There are currently no open hunting or trapping seasons for mountain goats, wolves, wolverines, fishers or grizzly bears.

3.12 INFORMATION GAPS

The population status and habitat use of many wildlife species found in the Skagit watershed is unknown. This includes, among others, some species which are hunted and/or trapped, most species at risk, and most top carnivores and herpetiles, both of which are key indicator species (note that overlap exists between these categories).

Naturally low densities, large home ranges and slow reproduction make top predators vulnerable to population declines. The ability of an ecosystem to support its top carnivores is an indicator of ecosystem health. Wolves (*Canis lupus*) and wolverines (*Gulo gulo*) are two top carnivores found in the Skagit watershed, but information on sightings of these animals is scarce, unsystematic, sometimes unreliable and often very old. Wolves could, and in all probability once did, exist in larger numbers than currently inhabit the North Cascades ecosystem. Recent radio-telemetry work has been done with wolverines south of the border in Washington. At least two of the radio-collared animals have crossed into Canada in Manning Park. There are currently no hunting or trapping seasons for wolves or wolverines in the Skagit watershed.

Open hunting seasons do exist for black bears (*Ursus americanus*) and cougars (*Puma concolor*), two of the other top predators in the watershed. Sightings of black bears are more common than other carnivores and the cougar population in the Skagit is thought to be stable; however, no systematic population inventories have been undertaken for these animals, either.

Other carnivore species with unknown population status in the Skagit watershed include lynx (*Lynx Canadensis*), bobcat (*Lynx rufus*), fisher (*Martes pennanti*), river otter (*Lontra canadensis*), marten (*Martes americana*), mink (*Neovison vison*), red fox (*Vulpes vulpes*) and coyote (*Canis latrans*). Open hunting and/or trapping seasons exist for lynx (Cascade Recreation area only), bobcat, river otter, marten, mink and coyote. The fisher is a blue listed species.

Other hunted or trapped species lacking good population inventories include upland game birds, including the blue listed band-tailed pigeon (*Patagioenas fasciata*), and waterfowl.

A large variety of raptors, the top predators of the sky, are known to use the Skagit watershed. Some of these birds are listed as species at risk and most are sensitive to disturbances around nesting areas. No population estimates have recently been done for most of the raptors found in the Skagit watershed.

Moose (*Alces alces*) and elk (*Cervus canadensis*) are visitors and possibly residents in the Skagit watershed. Both species likely used the watershed in higher numbers in the past, especially prior to the clearing and flooding of the valley bottom for Ross Lake Reservoir. Numbers of these species currently using the Skagit watershed are unknown.

Amphibian and reptile surveys to monitor species populations and distributions are also lacking in the Skagit watershed. Amphibians and reptiles are another group of important indicator species, sensitive to pollution, climate change and the spread of non-native species. Introduced populations of bull frogs (*Rana catesbeiana*) and green frogs (*Rana clamintans*) are spreading in British Columbia, Washington and elsewhere on the west coast. These species are depleting native amphibian populations through competition and direct predation. Monitoring for the presence and distribution of these non-native frogs is important. Several reptiles and amphibians at risk inhabit the Skagit River watershed, including coastal tailed frogs (*Ascaphus truei*) and red-legged frogs (*Rana aurora*). Pacific giant salamanders (*Dicamptodon tenebrosus*) are known to exist close by in the Chilliwack drainage and it would not be surprising if their presence was detected in the Skagit watershed. The rubber boa, an S4 listed species, is known from the watershed, as well.

Bats are another group of animals in need of better inventories in the Skagit River watershed. Some bat censuses have been done, but more sampling is needed, especially for the at risk species (see Appendix 3A).

Neotropical migrant passerines are birds which breed in northern North America and then migrate as far away as southern South America between breeding seasons. Knowledge of changes in the breeding populations of these birds is important not only with regards to the local watershed, but may be indicative of conditions elsewhere along the birds' migratory paths. Monitoring of neotropical migrants is therefore important as part of large-scale, bicontinental monitoring of these vulnerable species. Inventory and monitoring work of neotropical migrants was initiated in NOCA in 2001 (Siegel *et. al.* 2006).

Management Concern: Inventory and habitat data are lacking for many species and species guilds in the Skagit watershed. It is difficult to make appropriate management decisions for species if their population status is not known.

Strategy: Inventory, monitoring, and habitat use projects are needed for many species in the Skagit watershed, including top carnivores, raptors, herpetiles, bats, waterfowl, game birds, ungulates, furbearers, neotropical migrants and most species at risk. At the time of writing, a wolverine study is planned for the fall of 2008. A moose winter range and winter range mapping project is also planned for 2008. As funding becomes available for inventory and monitoring or habitat use projects, a priority list should be organized based on the most up-to-date information at the time.

3.13 INTERNATIONAL WILDLIFE

As previously noted, most of the fish and wildlife species found in the Canadian Skagit River watershed are contiguous with populations on the American side of the border. The majority of the upper Skagit watershed in Washington State falls within the North Cascades National Park Service Complex. The National Park Service has implemented the Natural Resource and Inventory Monitoring Program for NPS lands, and NOCA along with other national parks in Washington State (Mount Rainier, Olympic, and several smaller parks) have formed the North Coast and Cascades Inventory and Monitoring Network. This initiative of species/habitat inventory and monitoring will produce data for the U.S. Skagit watershed that is important on both sides of the border. The Washington Department of Fish and Wildlife also regularly monitors certain species in the Skagit watershed. Most agencies have standard protocols for data gathering, which may differ slightly between different organizations. It would facilitate comparisons and increase the usefulness of data if protocols for collection were harmonized across agencies.

Management Concern: The North Cascades ecosystem and Skagit River watershed straddle the U.S.-Canada border. Many fish and wildlife populations are continuous across the border, with individuals regularly moving from one country to the other. Species inventory, monitoring and habitat data need to be shared and easily compared between the Canadian and American parts of the watershed to provide a clear picture of the status of these species. Key movement corridors for wide ranging species such as

wolverines and grizzly bears also need to be identified and protected. Coordinated efforts for research undertaken on both sides of the border could reduce redundancy, increase efficiency and facilitate data sharing.

Strategy: Before beginning inventory or monitoring projects in British Columbia, NOCA and WDFW biologists should be contacted to ensure that the methodology used in BC will produce data that is easily integrated with similar data produced in Washington. Regular communication should be maintained between biologists working in the watershed on both sides of the border. This will allow biologists to coordinate and cooperate on studies in such a way as to maximize the data collected and its usefulness. For instance, coordinating the timing of amphibian surveys in BC and Washington would control for variables such as weather that would not be controlled for if comparing data collected in different years. These data would therefore be more useful than if they were collected at different times. Several cross-border meetings involving MOE and multiple US agencies including NPS, WDFW and the US Forest Service took place during the writing of this plan. These meetings are an important step towards integrating research, monitoring and management in the Skagit watershed and other international drainages and will hopefully form the basis for developing greater interagency cooperation.

3.14 HUMAN-WILDLIFE CONFLICT

In all areas where wildlife and humans interact there is the potential for conflict situations to arise. Several provincial park campgrounds exist within the Skagit watershed, as well as opportunities for many other types of wilderness recreation. The private community of Sunshine Valley is also located within the watershed. With the number of people using the watershed it is inevitable that there will be interactions between wildlife and people.

Management Concern: Potential for human-wildlife conflicts exist in the Skagit River watershed. These conflicts could be encounters with large carnivores like bears or cougars, or the more common interactions with “nuisance” animals such as raccoons, beavers, bats, skunks, etc.

Strategies:

- 1) The MOE has a Wildlife-Human Conflicts Prevention Strategy which is available on the Conservation Officer Service website (see References section). Encouraging proper bear-proofing of garbage and other attractants around private residences and campgrounds will help reduce the potential for conflicts both with bears and other species of wildlife that become habituated to human food and mineral sources. Discouraging the intentional feeding of wildlife such as deer is also important for keeping wildlife wild and preventing conflicts with humans. Conflicts between humans and wildlife also occur when certain species take up residence in houses and other buildings. Information on excluding bats from buildings can be found on the Bats in Buildings pages of the Bat Conservation International website (see References section).

- 2) Wildlife-proof food-storage containers (“bear boxes”) should be installed in park campgrounds and especially at backcountry campsites. Signage should be posted in campgrounds, at backcountry campsites and at trailheads reminding park visitors how to avoid conflicts with wildlife. Some signs regarding bears already exist on sign boards in the park campgrounds, but additional signage placed where it will be seen repeatedly by park users would help to remind them of what they can do to keep the park wildlife wild.

3.15 ENFORCEMENT

Successful management of fish and wildlife populations requires that legislation protecting species be supported by adequate monitoring and enforcement of regulation compliance.

Management Concern: Enforcing regulations protecting fish and wildlife and their habitats. The Skagit River watershed represents one small portion of a large territory currently serviced by Park Rangers and Conservation Officers in the Lower Mainland. Current patrols in the Skagit watershed are limited by capacity and priority.

Strategy: Options for additional enforcement staff should be investigated, and where possible allocated to enforce fish and wildlife regulations in the Skagit watershed.

4.0 LOOKING TO THE FUTURE

4.1 PLAN REVIEW

New information that may improve management practices is continually being gathered. At the same time, new management challenges are also regularly brought to light. The Upper Skagit Watershed Fish and Wildlife Management Plan will be reviewed on a five year cycle to ensure that its contents are current and up-to-date. New information that will improve the plan may be incorporated at any time if it does not substantially change the plan in such a way that additional public consultations are required. Significant changes that are considered to require immediate action will include a public consultation component.

4.2 NEW/INCREASING PRESSURES ON THE SKAGIT WATERSHED

There will undoubtedly be future changes to the Skagit watershed and surrounding areas that will impact management strategies for fish and wildlife species. There are currently two obvious and important trends whose impacts should be closely monitored:

4.2.1 Increasing Human Population of the Fraser Valley

The Lower Mainland area of British Columbia is experiencing rapid population growth. The proximity of the Skagit watershed to this growing concentration of people is likely to result in increased recreational use of the watershed and an interest in expanding housing and commercial opportunities in Sunshine Valley and possibly elsewhere. Traffic volume on Highway 3 (and to a lesser extent on the Silver-Skagit Road) can also be expected to grow, increasing the probability of vehicular crashes, chemical runoff into waterways, and collisions with wildlife. Increased human presence in the watershed will undoubtedly increase the pressures faced by fish and wildlife species, including habitat loss and alteration, disturbance, and barriers to dispersal. These heightened pressures can be expected to compound management Management Concerns, especially for sensitive species. Revisions of this plan will need to deal with managing for increased human use of the watershed.

4.2.2 Climate Change

The impacts of climate change on the Skagit watershed will present a significant challenge for fish and wildlife management. While many consequences of climate change can be predicted in a general sense, the exact timing and manifestation of these effects are impossible to determine at this time. Shrinking glaciers, changes in snow pack and melt timing and changes in precipitation patterns are likely to cause lowered/varied stream flows and warmer water temperatures during summer months. These changes will have serious consequences for fish and amphibian species, especially species dependent cold water like bull trout and on small, cold streams like coastal tailed frogs. Other changes that are likely to occur include changes in vegetation zones, especially along altitudinal and latitudinal gradients; changing moisture levels; differences in wildfire intervals and intensity; and changes in wildlife ranges and distribution. The impacts these changes will have on low-level trophic species like plants and invertebrates may have consequences that will be felt along the entire food chain. Future revisions of this plan will need to address climate change Management Concerns with the best available science of the time.

5.0 REFERENCES

5.1 INTERNET RESOURCES

Bat Conservation International: Bats in Buildings

<http://www.batcon.org/home/index.asp?idPage=51&idSubPage=43>

California Forest Stewardship Program: Tips for Creating Snags

<http://ceres.ca.gov/foreststeward/html/snagtips.html>

Ministry of Forests and Range: Forest Practices Branch

<http://www.for.gov.bc.ca/hfp/>

Wildlife Tree Committee

<http://www.for.gov.bc.ca/hfp/values/wildlife/WLT/index.htm>

Ministry of Environment: Compliance Division

<http://www.env.gov.bc.ca/compliance/>

Conservation Officer Service

<http://www.env.gov.bc.ca/cos/#>

Wildlife-Human Conflicts Prevention Strategy

http://www.env.gov.bc.ca/cos/info/wildlife_human_interaction/index.html

Ministry of Environment: Environmental Stewardship Division

<http://www.env.gov.bc.ca/esd/>

Ecosystems Branch

<http://www.env.gov.bc.ca/wld/index.htm>

Endangered Species and Ecosystems

<http://www.env.gov.bc.ca/atrisk/>

BC Species and Ecosystems Explorer

<http://www.env.gov.bc.ca/atrisk/toolintro.html>

Wildlife Guidelines for Backcountry Tourism/Commercial Recreation

<http://www.env.gov.bc.ca/wld/twg/index.html>

Fish and Wildlife Branch

<http://www.env.gov.bc.ca/fw/index.html>

Lower Mainland Region

<http://wlapwww.gov.bc.ca/sry/fwh/index.htm>

Northern Spotted Owls and Their Management Plan

<http://wlapwww.gov.bc.ca/sry/fwh/wildlife/srmz.htm>

National Park Service

<http://www.nps.gov/>

North Cascades National Park Service Complex

<http://www.nps.gov/noca/>

Inventory and Monitoring of Park Natural Resources

<http://www1.nature.nps.gov/protectingrestoring/IM/inventoryandmonitoring.htm>

Seattle City Light

<http://www.seattle.gov/light/>

Conservation

<http://www.seattle.gov/light/conserve/>

Skagit Environmental Endowment Commission

<http://www.skagiteec.org/>

Species at Risk Act (SARA)

http://www.sararegistry.gc.ca/default_e.cfm

Sunshine Valley and Silver Tip Ski Resort

<http://www.skisilvertip.com/>

US Fish and Wildlife Service: Endangered Species Program

<http://www.fws.gov/endangered/>

Washington Department of Fish and Wildlife

<http://wdfw.wa.gov/>

Species of Concern

<http://wdfw.wa.gov/wlm/diversty/soc/concern.htm>

Washington State Department of Natural Resources

<http://www.dnr.wa.gov/>

5.2 LITERATURE CITED AND OTHER REFERENCES

Armstrong, C. 2007. Skagit River Watershed Background Report. Prepared by TaaraPath Consulting for BC Ministry of Environment.

Barnard, T. 1986a. Current Population Status of Black Bear, Grizzly Bear, Cougar and Wolf in the Skagit River Watershed. Prepared for the BC Ministry of Environment.

Barnard, T. 1986b. Current Status of Deer Spring Ranges at Whitworth and Ponderosa Meadows, Lower Skagit Valley. Prepared for the BC Ministry of Environment.

Barnard, T. 1986c. Status of Fur Harvesting in the Skagit River Watershed, 1970-1986. Prepared for the BC Ministry of Environment.

Barnard, T. 1987a. Current Population Status and Seasonal Distribution of Mountain Goat in the Skagit River Watershed. Prepared for BC Ministry of Environment and Parks.

- Barnard, T. 1987b. Characteristics of the 1986 Fall Hunting Effort and Harvest in the Skagit River Watershed. BC Ministry of Environment and Parks.
- B.C. Conservation Data Centre. 2008. Species Summary: *Histrionicus histrionicus*. BC Ministry of Environment.
- B.C.'s Wild Heritage. 2000a. Ecological Study of the Skagit Valley Provincial Park Lowlands. Prepared for Skagit Environmental Endowment Commission.
- B.C.'s Wild Heritage. 2000b. Biomonitoring of Vegetation and Brown-headed Cowbirds in the Skagit Valley Provincial Park. Prepared for the Skagit Environmental Endowment Commission.
- Blackburn, I. and S. Godwin. 2004. Accounts and Measures for Managing Identified Wildlife – Accounts V. Spotted Owl (*Strix occidentalis*). BC Ministry of Water, Land and Air Protection.
- Blood, D.A. 2000. Mountain Goat in British Columbia. Province of British Columbia, Ministry of Environment, Lands and Parks 851531.0300.
- Blood, D.A. 2000. Mule and Black-tailed Deer in British Columbia. Province of British Columbia, Ministry of Environment, Lands and Parks 851538.0300.
- Burrows, J.A. and R. Neuman. 1995a. Skagit River Rainbow Trout Population Trend: Underwater Census from 1982 to 1994. BC Ministry of Environment, Lands and Parks, Regional Fisheries Report No. LM253.
- Burrows, J.A. and R. Neuman. 1995b. Skagit River Rainbow Trout Population Trends: Research Angling from 1986-1994. BC Ministry of Environment, Lands and Parks. Regional Fisheries Report No. LM169.
- Christophersen, R.G. and R.C. Kuntz. 2003. A Survey of Bat Species Composition, Distribution and Relative Abundance in North Cascades National Park Service Complex, Washington. Technical Report NPS/NOCA/NRTR-2003/01.
- Christophersen, R.G., R.C. Kuntz and J.F. McLaughlin. 2005. A Survey of Forest Carnivore Species Composition and Distribution North Cascades National Park Service Complex, Washington. National Park Service North Coast and Cascades Network. Report Series: NPS/PWR-NCCN/NOCA/NRTR-2005-01.
- Columbia Mountains Institute of Applied Ecology. 2006. Bear Conservation in a Fast Changing North America. Conference Proceedings.
- Coté, S.D. 1996. Mountain Goat Responses to Helicopter Disturbance. Wildlife Society Bulletin 24: 681-685.

- Ercelawn, A. 1999. End of the Road: The Adverse Ecological Impacts of Roads and Logging: A Compilation of Independently reviewed research. National Resources Defense Council.
- Fenger, M., T. Manning, J. Cooper, S. Guy, and P. Bradford. 2006. Wildlife & Trees in British Columbia. Lone Pine Publishing, Edmonton, AB.
- Foster, E.R. and B.Y. RaHS. 1983. Mountain goat response to hydroelectric exploration in northwestern British Columbia. *Environmental Management* 7: 189-197.
- Freeman, S.D. and R.I Goudie. 2004. Status of Harlequin Duck in the Upper Skagit River Watershed, British Columbia. Prepared for the Skagit Environmental Endowment Commission.
- Hamilton, D. and S. Wilson. 2001. Access Management in British Columbia: A Provincial Overview. Prepared for BC Ministry of Environment, Lands and Parks, Habitat Protection Branch.
- Harcombe, A.P. 1994. Skagit River Rare Biological Elements Study. BC Conservation Data Centre.
- Harris, B. 2001. Observations on the Use of Stubs by Wild Birds: A 10 Year Update. *B.C. Journal of Ecosystems and Management*. 1: 1-5.
- Jex, B. 2007. Distribution of Important Seasonal Habitats for Mountain Goats and other Wildlife in the Skagit River Watershed, British Columbia. BC Ministry of Environment.
- Joslin, G. 1986. Mountain goat population changes in relation to energy exploration along Montana's Rocky Mountain Front. *Biennial Symposium of the Northern Wild Sheep and Goat Council* 5: 253-269.
- Loeff, A.C. 1995. Ross Lake Rainbow Trout Study 1994-95 Final Report. Fisheries Management Division, Washington Department of Fish and Wildlife.
- Luszcz, T. 2001. Bats of the northern Skagit watershed: Year 2000 Final Report. Prepared for the Skagit Environmental Endowment Commission.
- McCrory Wildlife Services Ltd. 2003. Preliminary Bear Hazard Evaluation E.C. Manning and Skagit Valley Provincial Parks and Cascade Recreation Area, B.C. Prepared by McCrory Wildlife Services Ltd. for the BC Ministry of Water Land and Air Protection.
- McPhail, J.D. and E.B. Taylor. 1995. Skagit Char Project (94-1). Final Report to Skagit Environmental Endowment Commission.

- Ministry of Energy and Mines, Ministry of Environment Lands and Parks, Ministry of Forests, Land Use Co-Ordination Office. 1998. Silverdaisy Integrated Management Plan.
- Ministry of Environment. 2004. E.C. Manning Provincial Park and Cascade Recreation Area Management Plan. Environmental Stewardship Division and BC Parks, Okanagan Region, BC Ministry of Environment.
- Ministry of Forests. 2005. Wildlife Tree Retention: Management Guidance.
- Ministry of Forests and Ministry of Environment, Lands and Parks. 2000. Provincial Wildlife Tree Policy and Management Recommendations. Forest Practices Branch, MOF and Habitat Branch, MELP.
- Ministry of Environment. 1986. Skagit Environmental Endowment Area Status of Wildlife Data.
- Murray, R.B. and M.N. Gaboury. 2005. Fish Habitat Assessment and Char Utilization for the Upper Skagit River Watershed, BC. Prepared by LGL Environmental Research Associates for BC Ministry of Water, Land and Air Protection.
- Nelson, T.C. 2006. Final Report: Upper Skagit Watershed Native Char Project 2001-2004. Prepared by LGL Environmental Research Associates for BC Ministry of Environment.
- Neuman, R. 1988. Skagit River and Ross Reservoir Fisheries Management Plan. BC Ministry of Environment, Regional Fisheries Report No. LM150.
- North Cascades Grizzly Bear Recovery Team. 2004. Recovery Plan for Grizzly Bears in the North Cascades of British Columbia. BC Ministry of Water Land and Air Protection.
- Scott, K.J., M.E. Thomey and M.J. Staley. 1995. Assessment of the 1994 Skagit River Sport Fishery. Prepared by Scott Resource Services for BC Ministry of Environment Lands and Parks.
- Scott, K.J., A.R. Walter and M.J. Staley. 2003. Assessment of the 2002 Skagit River Sport Fishery. Prepared by Scott Resource Services for the Skagit Environmental Endowment Commission.
- Scott Resource Services. 2008. DRAFT Skagit River Angler Quality, Access and Capacity Study. Prepared by Scott Resource Services in association with TAARA Environmental for BC Ministry of Environment.

Siegel, R.B., R.L. Wilkerson, R.C. Kuntz and J. McLaughlin. 2006. Land Bird Inventory for North Cascades National Park Service Complex (2001-2002). Final Report. Prepared for the North Cascades National Park Service Complex.

Stone, J., J. Parminter, A. Arsenault, T. Manning, N. Densmore, G. Davis, and A. MacKinnon. 2002. Dead Tree Management in British Columbia. USDA Forest Service General Technical Report PSW-GTR-181.

Summit Environmental Consultants, Ltd. 2003. Ecosystem Plan: E.C. Manning Provincial Park, Skagit Valley Provincial Park and Cascade Recreation Area. Prepared for BC Ministry of Water, Land, and Air Protection.

Zyskowski, S.E. 2007. Stream Fish Inventories 2001-2003, North Cascades National Park Service Complex and Mount Rainier National Park, Washington. United States Department of the Interior, National Park Service.

DRAFT

APPENDICIES

APPENDIX 1: SUMMARY OF MANAGEMENT STRATEGIES REQUIRING ACTION AND FUNDING

Section under construction – not available at this time.

APPENDIX 2: LIST OF CONTACTS

- A) Ministry of Environment Contacts:
- B) Contacts in Other BC Ministries:
- C) US National Park Service and Washington State Contacts:
- D) Other Relevant Contacts:

Section under construction – not available at this time.

APPENDIX 3: HABITAT MAPS

Section under construction – not available at this time.

DRAFT

APPENDIX 4: SPECIES LISTS

A) Species at Risk

The following information is summarized from the Endangered Species and Ecosystems Explorer website. The publications listed are the ones for which this site provided links at the time of writing. Additional publications may be added in the future.

Publication Abbreviations:

SS – Species Summary

BC CSR – BC Conservation Summary Report

SARB – Species at Risk Brochure

SR – Status Report

IWSA – Identified Wildlife Species Account

RP – Recovery Plan

RP(SARA) – Federal Recovery Plan under the *Species At Risk Act*

COSEWIC is the Committee on the Status of Endangered Wildlife in Canada. COSEWIC rankings are used to help determine species listings under SARA.

DRAFT

B) Species With Open Hunting/Trapping Seasons in the Skagit Watershed

Scientific Name	Common Name	Management Unit	Activity
<i>Odocoileus hemionus</i>	Mule deer	2-2, 2-17, 8-5	Hunting
<i>O. hemionus columbianus</i>	Black-tailed deer	2-2, 2-17, 8-5	Hunting
<i>Odocoileus virginianus</i>	White-tailed deer	8-5	Hunting
<i>Alces alces</i>	Moose	8-5	Hunting
<i>Cervus canadensis</i>	Elk	8-5	Hunting
<i>Ursus americanus</i>	Black bear	2-2, 2-17, 8-5	Hunting
<i>Canis latrans</i>	Coyote	2-2, 2-17, 8-5	Hunting/Trapping
<i>Procyon lotor</i>	Raccoon	2-2, 2-17, 8-5	Hunting
<i>Mephitis mephitis</i>	Skunk	2-2, 2-17, 8-5	Hunting/Trapping
<i>Lepus americanus</i>	Snowshoe hare	2-17, 8-5	Hunting
<i>Lynx rufus</i>	Bobcat	2-2, 2-17, 8-5	Hunting/Trapping
<i>Lynx Canadensis</i>	Lynx	8-5	Hunting/Trapping
<i>Puma concolor</i>	Cougar	2-2, 2-17, 8-5	Hunting
<i>Bonasa umbellus</i>	Ruffed grouse	2-2, 2-17, 8-5	Hunting
<i>Dendragapus obscurus</i>	Blue grouse	2-2, 2-17, 8-5	Hunting
<i>Falcapennis canadensis</i>	Spruce grouse	2-2, 2-17, 8-5	Hunting
<i>Lagopus leucura</i>	Ptarmigan	2-2, 2-17	Hunting
<i>Patagioenas fasciata</i>	Band-tailed pigeon	2-2, 2-17	Hunting
<i>Zenaida macroura</i>	Mourning dove	8-5	Hunting
<i>Fulica americana</i>	Coot	2-2, 2-17, 8-5	Hunting
<i>Gallinago delicata</i>	Snipe	2-2, 2-17, 8-5	Hunting
Family Anatidae	ducks	2-2, 2-17, 8-5	Hunting
<i>Branta canadensis</i>	Canada goose	2-2, 2-17, 8-5	Hunting
<i>Anser albifrons</i>	White-fronted goose	8-5	Hunting
<i>Chen caerulescens</i>	Snow goose	8-5	Hunting
<i>Chen rossii</i>	Ross's goose	8-5	Hunting
<i>Castor Canadensis</i>	Beaver	2-2, 2-17, 8-5	Trapping
<i>Ondatra zibethicus</i>	Muskrat	2-2, 2-17, 8-5	Trapping
<i>Vulpes vulpes</i>	Fox	2-2, 2-17	Trapping
<i>Martes americana</i>	Marten	2-2, 2-17, 8-5	Trapping
<i>Neovison vison</i>	Mink	2-2, 2-17, 8-5	Trapping
<i>Lontra canadensis</i>	River otter	2-2, 2-17, 8-5	Trapping
<i>Mustela sp.</i>	Weasel	2-2, 2-17, 8-5	Trapping
Family: Sciuridae	Squirrel	2-2, 2-17, 8-5	Trapping

Open seasons, bag limits, and other regulations can be found in the BC Hunting and Trapping Regulations.