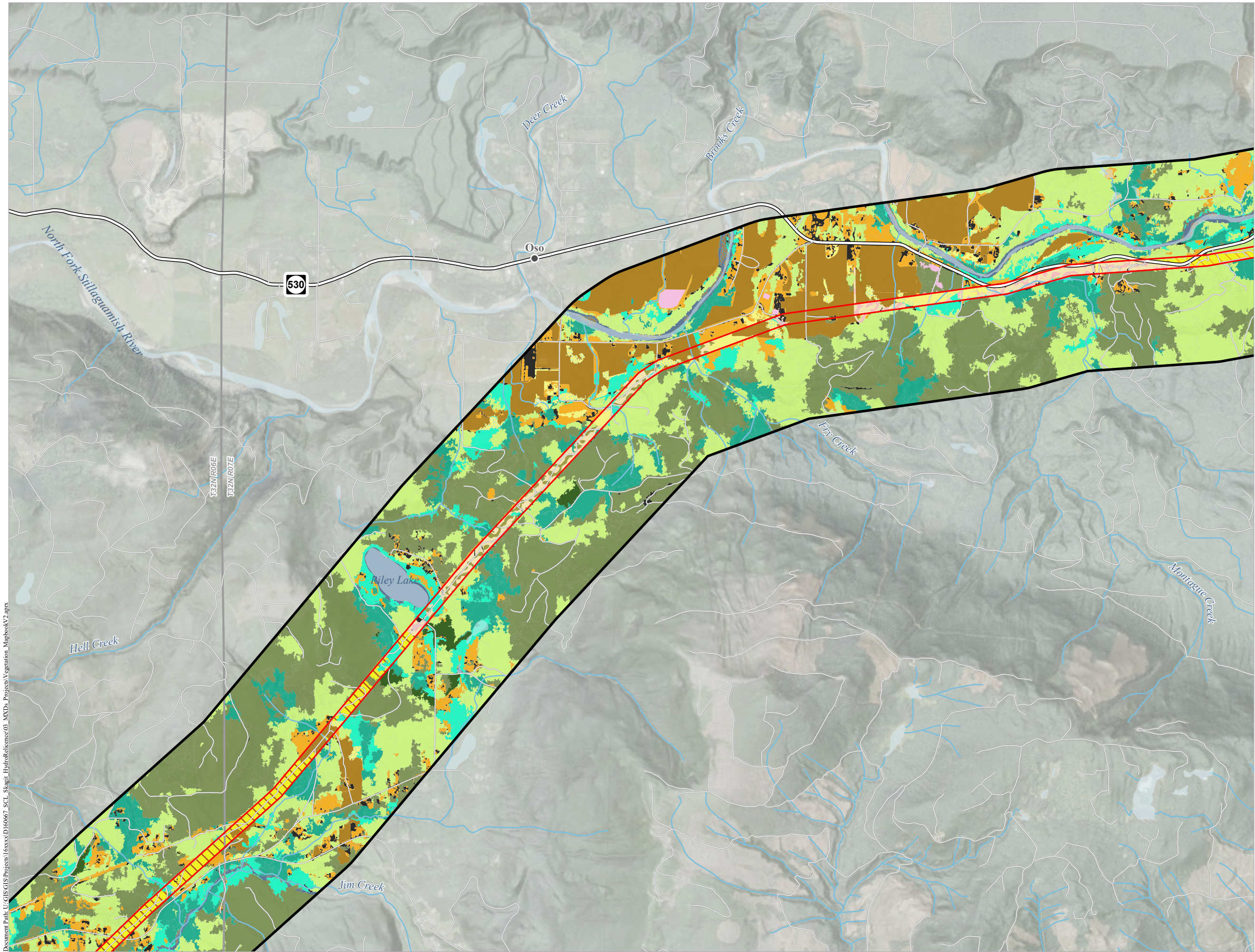
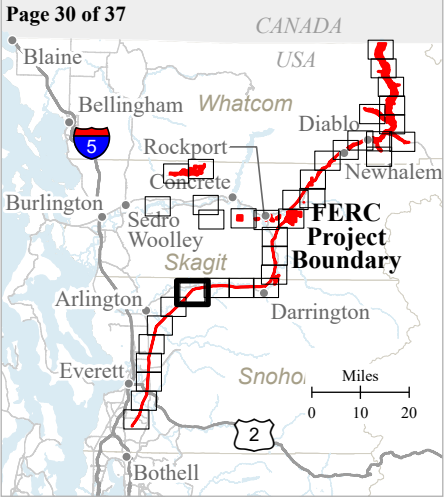
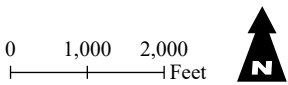


Document Path: U:\GIS\GIS\Projects\16xxxx\160667_SCL_Skagit_HydroReference\03_MXD\Projects\Vegetation_Mapbook\72.aprx



TR-01 VEGETATION STUDY DRAFT RESULTS MAPBOOK

- FERC Project Boundary
- Streams
- Secondary Highway
- Other Road
- Vegetation Study Area
- Canopy Metrics Modeling Area
- G237 - North Pacific Red Alder - Bigleaf Maple - Douglas-fir Forest Group
- G240 - North Pacific Maritime Douglas-fir - Western Hemlock Forest Group
- G322 - Vancouverian Wet Shrubland
- G524 - Western North American Ruderal Wet Shrubland, Meadow, and Marsh
- G648 - Southern Vancouverian Lowland Ruderal Grassland & Shrubland
- G851 - North Pacific Lowland Riparian Forest & Woodland Group
- G853 - North Pacific Maritime Hardwood-Conifer Swamp
- Grass - Dominated
- CGR MOD Cultivated Row Crops
- CGR022 Cultivated Pasture & Hay Grass Cultural Group
- Invasive Shrub
- Invasive Shrub/Native Shrub/Forb (Invasive shrub cover dominant)
- Mixed Grass/Forb/Invasive Shrub
- Mixed Native Shrub-tree/Invasive Shrub (native shrub cover dominant)
- Gravel (Water)
- Developed
- Open Water

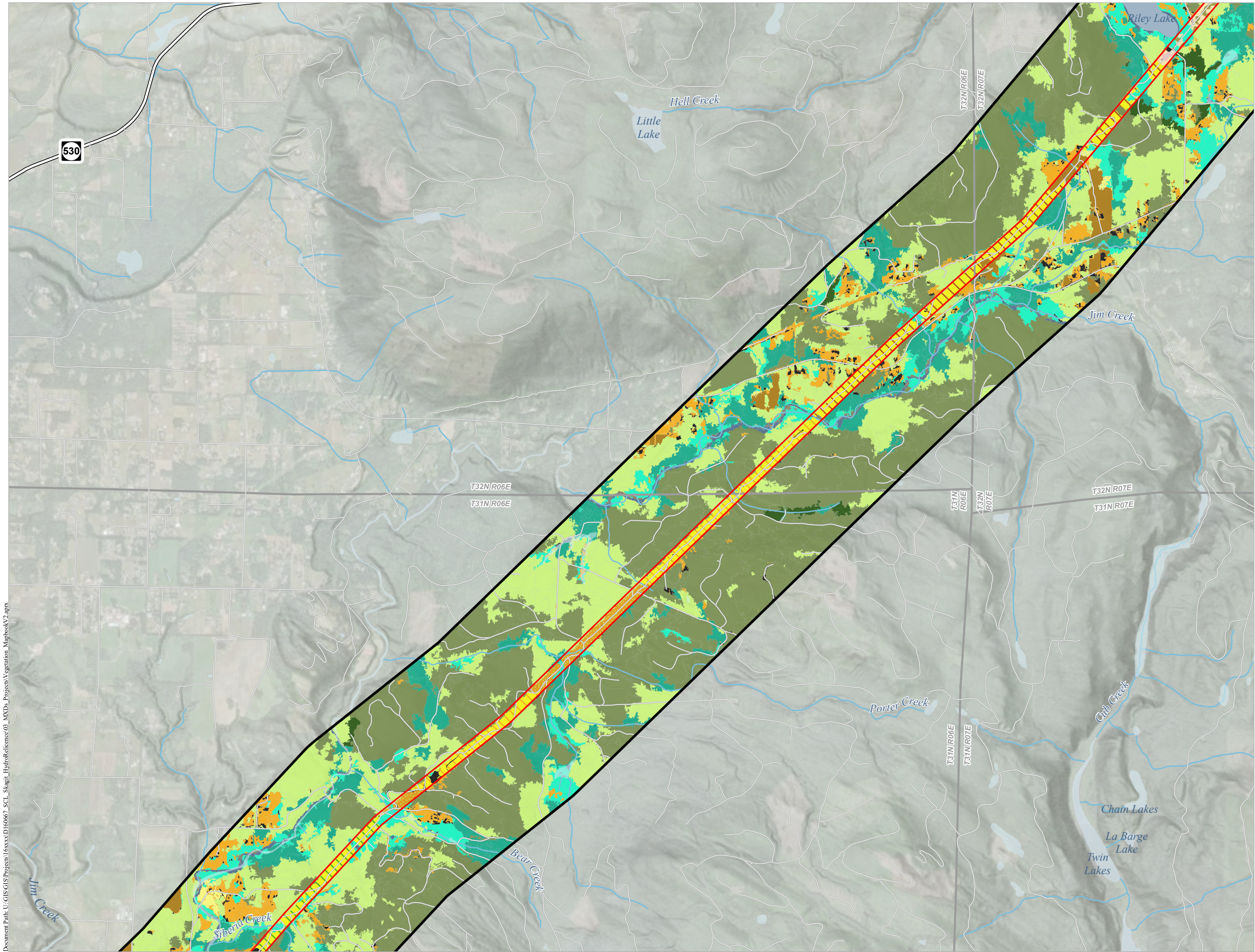


Seattle City Light

SKAGIT RIVER HYDROELECTRIC PROJECT (FERC NO. 553)

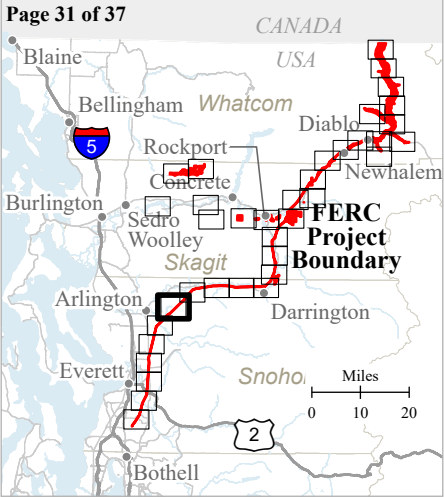
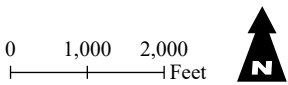
Created on 12/20/2021 by ESA for Seattle City Light.
City Light provides no warranty, expressed or implied, as to the accuracy, reliability or completeness of this data.
Data Source: [NAIP, 2015; NPS, 2020; SCL, 2020].

Document Path: U:\GIS\GIS\Projects\16xxxx\160667_SCL_Skagit_HydroReference\03_MXDs\Projects\Vegetation_Mapbook\2.aprx



**TR-01 VEGETATION STUDY
DRAFT RESULTS MAPBOOK**

- FERC Project Boundary
- Streams
- Secondary Highway
- Other Road
- Vegetation Study Area
- Canopy Metrics Modeling Area
- G237 - North Pacific Red Alder - Bigleaf Maple - Douglas-fir Forest Group
- G240 - North Pacific Maritime Douglas-fir - Western Hemlock Forest Group
- G322 - Vancouverian Wet Shrubland
- G524 - Western North American Ruderal Wet Shrubland, Meadow, and Marsh
- G648 - Southern Vancouverian Lowland Ruderal Grassland & Shrubland
- G851 - North Pacific Lowland Riparian Forest & Woodland Group
- G853 - North Pacific Maritime Hardwood-Conifer Swamp
- Grass - Dominated
- CGR022 Cultivated Pasture & Hay Grass Cultural Group
- Invasive Shrub
- Invasive Shrub/Native Shrub/Forb (Invasive shrub cover dominant)
- Mixed Grass/Forb/Invasive Shrub
- Mixed Native Shrub-tree/Invasive Shrub (native shrub cover dominant)
- Mixed Native Shrub/Tree/Forb (co-dominants)
- Native Deciduous Shrub/Tree
- Gravel (Water)
- Developed
- Open Water

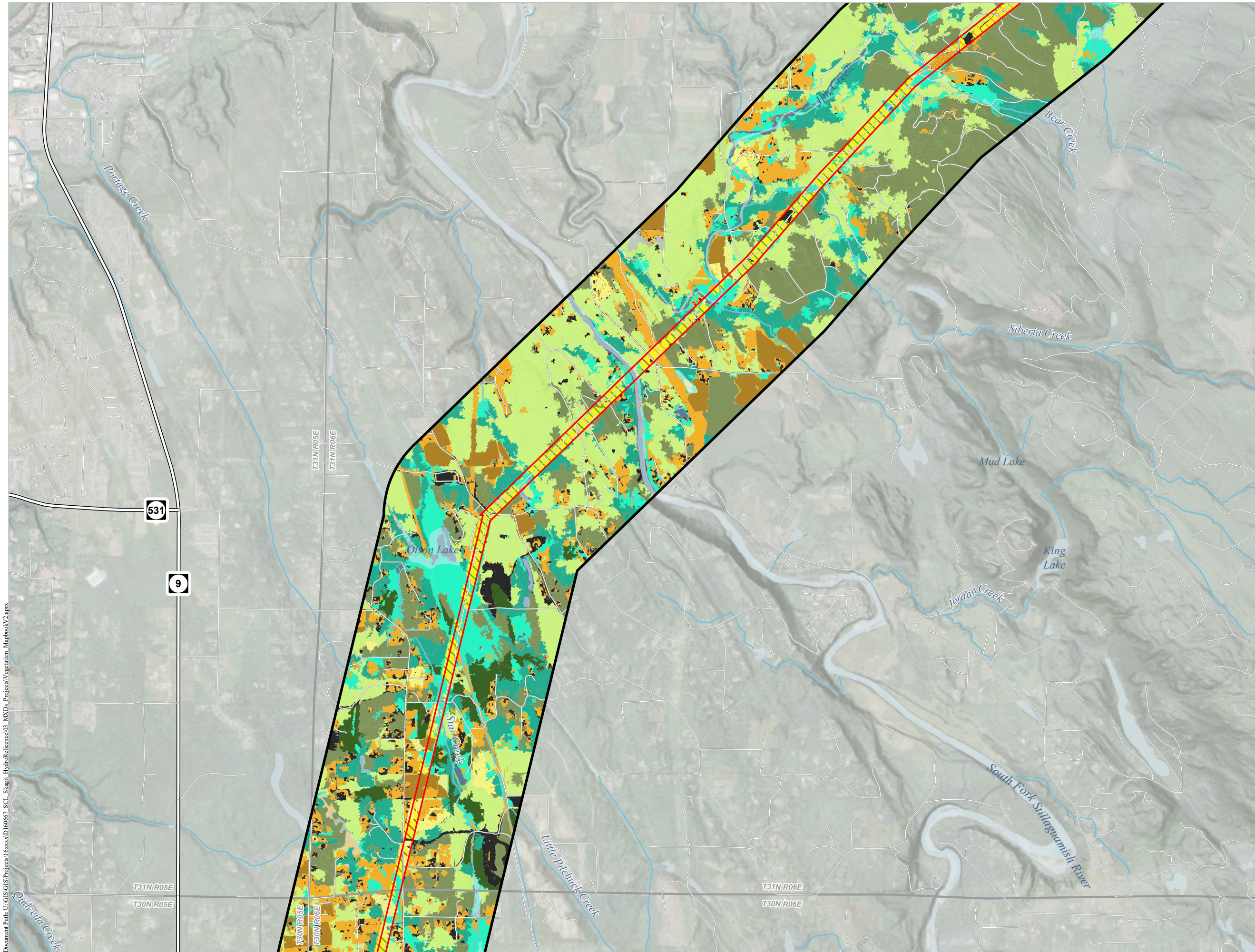


Seattle City Light

**SKAGIT RIVER HYDROELECTRIC
PROJECT (FERC NO. 553)**

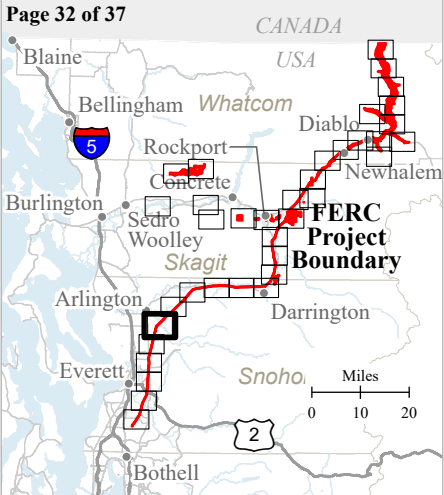
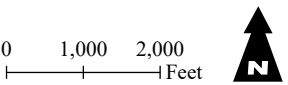
Created on 12/20/2021 by ESA for Seattle City Light.
City Light provides no warranty, expressed or implied, as to the accuracy, reliability or completeness of this data.
Data Source: [NAIP, 2015; NPS, 2020; SCL, 2020].

Document Path: U:\GIS\GIS\Projects\16xxxx\160667_SCL_Skagit_HydroReference\03_MXD\Projects\Vegetation_Mapbook\72.aprx



**TR-01 VEGETATION STUDY
DRAFT RESULTS MAPBOOK**

- FERC Project Boundary
- Streams
- Secondary Highway
- Other Road
- Vegetation Study Area
- Canopy Metrics Modeling Area
- G237 - North Pacific Red Alder - Bigleaf Maple - Douglas-fir Forest Group
- G240 - North Pacific Maritime Douglas-fir - Western Hemlock Forest Group
- G322 - Vancouverian Wet Shrubland
- G524 - Western North American Ruderal Wet Shrubland, Meadow, and Marsh
- G648 - Southern Vancouverian Lowland Ruderal Grassland & Shrubland
- G851 - North Pacific Lowland Riparian Forest & Woodland Group
- G853 - North Pacific Maritime Hardwood-Conifer Swamp
- Grass - Dominated
- CGR022 Cultivated Pasture & Hay Grass Cultural Group
- Mixed Grass/Forb/Invasive Shrub
- Mixed Native Shrub-tree/Invasive Shrub (native shrub cover dominant)
- Mixed Native Shrub/Tree/Forb (co-dominants)
- Native Deciduous Shrub/Tree
- Gravel (Water)
- Developed
- Open Water

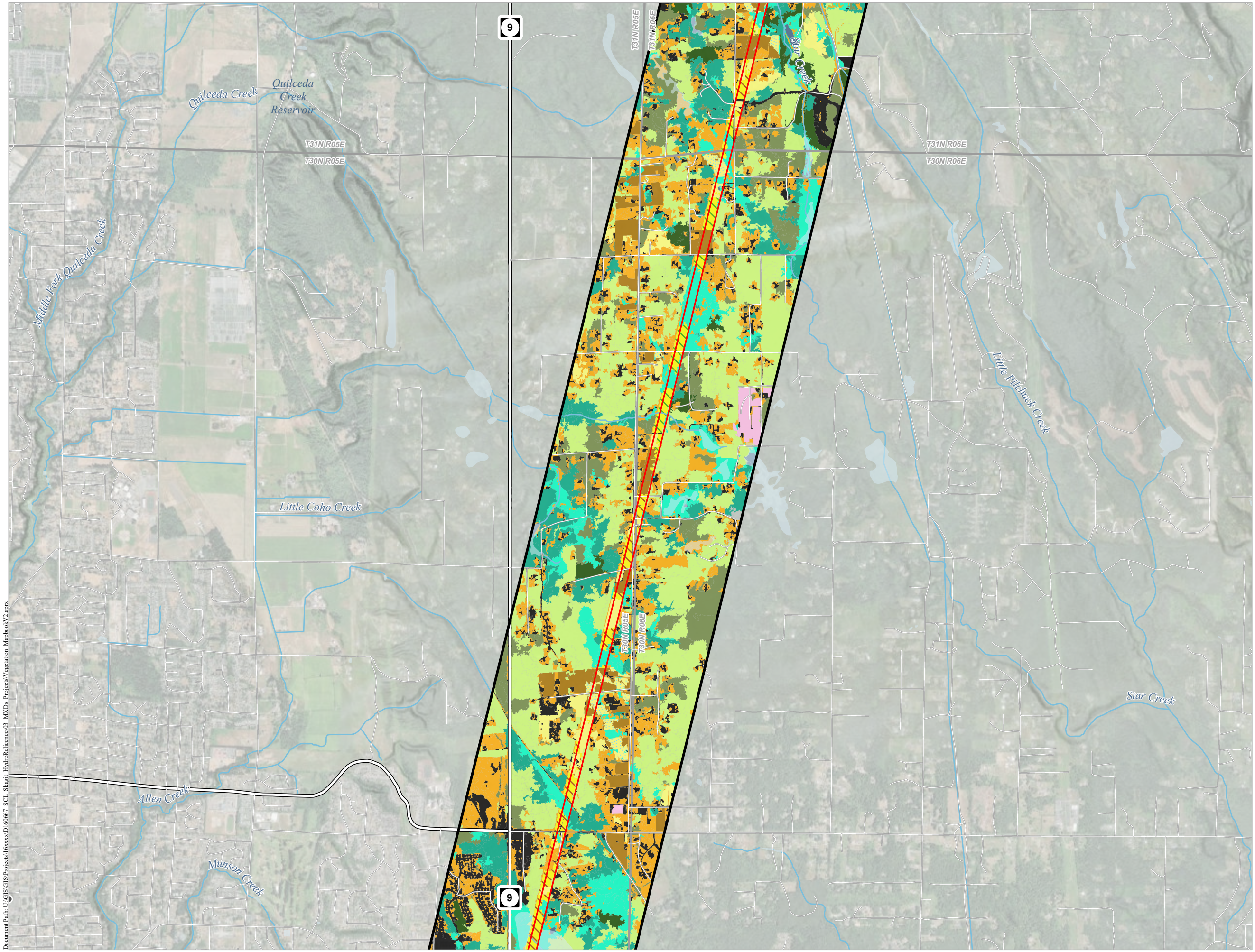


Seattle City Light

**SKAGIT RIVER HYDROELECTRIC
PROJECT (FERC NO. 553)**

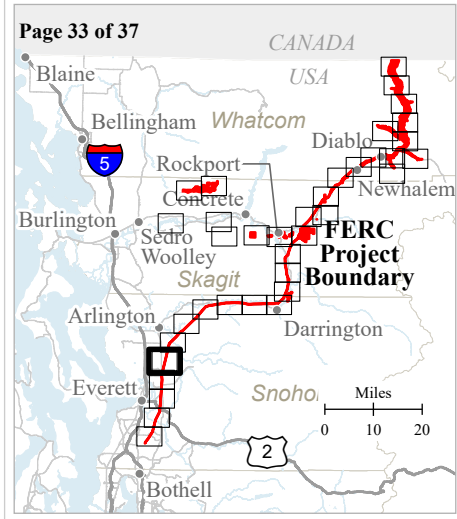
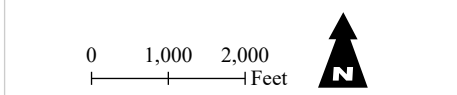
Created on 12/20/2021 by ESA for Seattle City Light.
City Light provides no warranty, expressed or implied, as to the accuracy, reliability or completeness of this data.
Data Source: [NAIP, 2015; NPS, 2020; SCL, 2020].

Document Path: U:\GIS\GIS\Projects\16xxxx\16xxxx.D 60667_SCL_Skagit_HydroReference03_MXD\Projects\Vegetation_Mapbook\2.aprx



TR-01 VEGETATION STUDY DRAFT RESULTS MAPBOOK

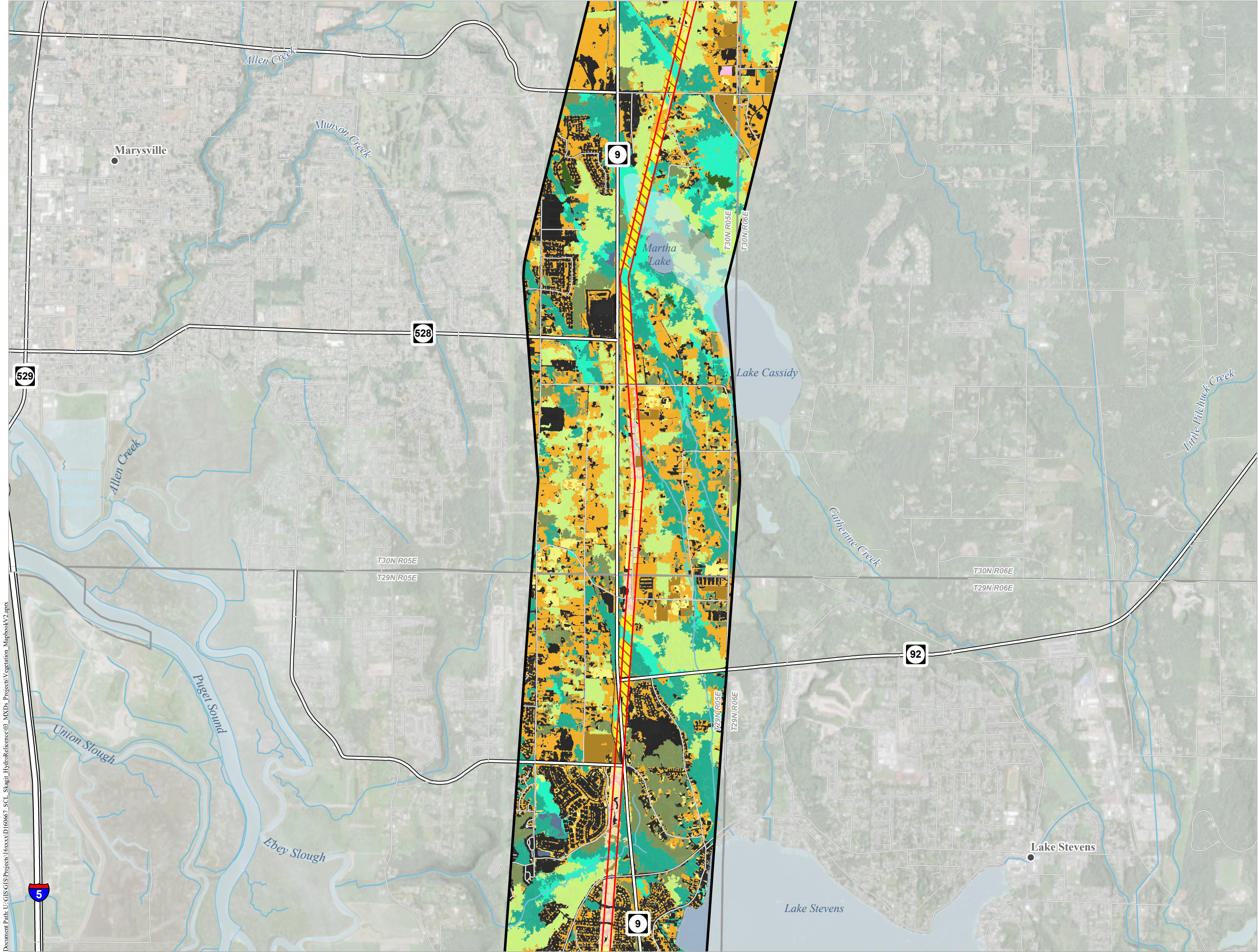
- FERC Project Boundary
- Streams
- Secondary Highway
- Other Road
- Vegetation Study Area
- Canopy Metrics Modeling Area
- G237 - North Pacific Red Alder - Bigleaf Maple - Douglas-fir Forest Group
- G240 - North Pacific Maritime Douglas-fir - Western Hemlock Forest Group
- G322 - Vancouverian Wet Shrubland
- G524 - Western North American Ruderal Wet Shrubland, Meadow, and Marsh
- G648 - Southern Vancouverian Lowland Ruderal Grassland & Shrubland
- G851 - North Pacific Lowland Riparian Forest & Woodland Group
- G853 - North Pacific Maritime Hardwood-Conifer Swamp
- Grass - Dominated
- CGR MOD Cultivated Row Crops
- CGR022 Cultivated Pasture & Hay Grass Cultural Group
- Mixed Grass/Forb/Invasive Shrub
- Mixed Native Shrub-tree/Invasive Shrub (native shrub cover dominant)
- Mixed Native Shrub/Tree/Forb (co-dominants)
- Gravel (Water)
- Developed
- Open Water



SKAGIT RIVER HYDROELECTRIC PROJECT (FERC NO. 553)

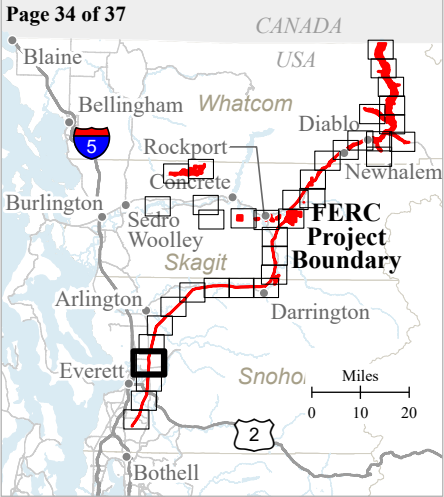
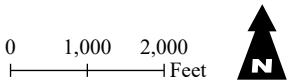
Created on 12/20/2021 by ESA for Seattle City Light.
City Light provides no warranty, expressed or implied, as to the accuracy, reliability or completeness of this data.
Data Source: [NAIP, 2015; NPS, 2020; SCL, 2020].

Document Path: U:\GIS\GIS\Projects\16xxxx\160667_SCL_Skagit_HydroReference\03_MXD\Projects\Vegetation_Mapbook\2.aprx



**TR-01 VEGETATION STUDY
DRAFT RESULTS MAPBOOK**

- FERC Project Boundary
- Streams
- Primary Highway
- Secondary Highway
- Other Road
- Vegetation Study Area
- Canopy Metrics Modeling Area
- G237 - North Pacific Red Alder - Bigleaf Maple - Douglas-fir Forest Group
- G240 - North Pacific Maritime Douglas-fir - Western Hemlock Forest Group
- G322 - Vancouverian Wet Shrubland
- G524 - Western North American Ruderal Wet Shrubland, Meadow, and Marsh
- G648 - Southern Vancouverian Lowland Ruderal Grassland & Shrubland
- G851 - North Pacific Lowland Riparian Forest & Woodland Group
- G853 - North Pacific Maritime Hardwood-Conifer Swamp
- Grass - Dominated
- CGR MOD Cultivated Row Crops
- CGR022 Cultivated Pasture & Hay Grass Cultural Group
- Invasive Shrub
- Invasive Shrub/Native Shrub/Forb (Invasive shrub cover dominant)
- Mixed Grass/Forb/Invasive Shrub
- Mixed Native Shrub-tree/Invasive Shrub (native shrub cover dominant)
- Gravel (Water)
- Developed
- Open Water

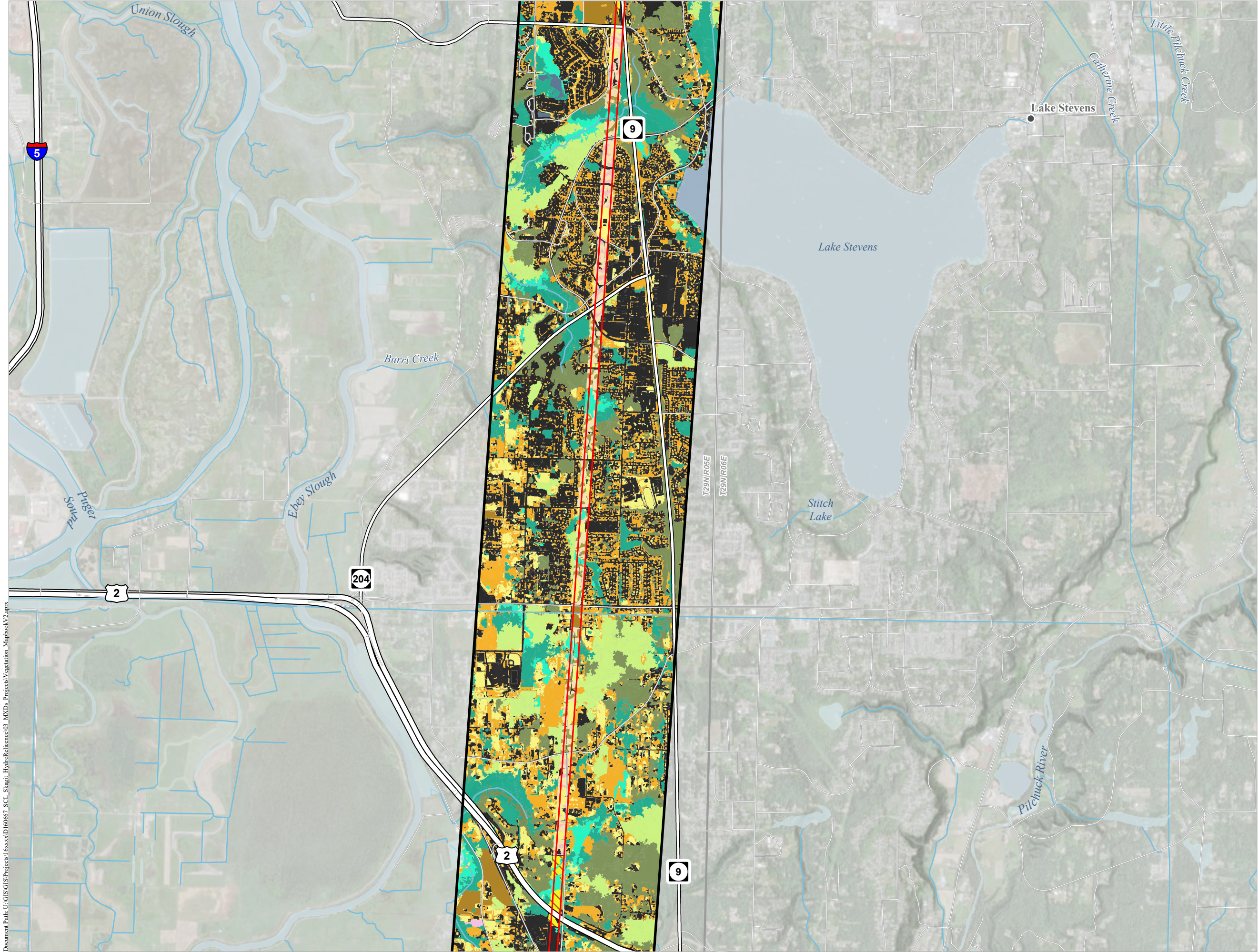


Seattle City Light

**SKAGIT RIVER HYDROELECTRIC
PROJECT (FERC NO. 553)**

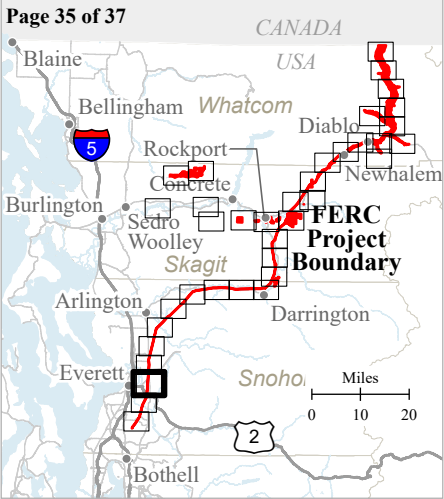
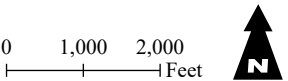
Created on 12/20/2021 by ESA for Seattle City Light.
City Light provides no warranty, expressed or implied, as to the accuracy, reliability or completeness of this data.
Data Source: [NAIP, 2015; NPS, 2020; SCL, 2020].

Document Path: U:\GIS\GIS\Projects\16xxxxD\60667_SCL_Skagit_HydroReference\03_MXD\Projects\Vegetation_Mapbook\2.aprx



TR-01 VEGETATION STUDY DRAFT RESULTS MAPBOOK

- FERC Project Boundary
- Streams
- Primary Highway
- Secondary Highway
- Other Road
- Vegetation Study Area
- Canopy Metrics Modeling Area
- G237 - North Pacific Red Alder - Bigleaf Maple - Douglas-fir Forest Group
- G240 - North Pacific Maritime Douglas-fir - Western Hemlock Forest Group
- G322 - Vancouverian Wet Shrubland
- G524 - Western North American Ruderal Wet Shrubland, Meadow, and Marsh
- G648 - Southern Vancouverian Lowland Ruderal Grassland & Shrubland
- G851 - North Pacific Lowland Riparian Forest & Woodland Group
- Grass - Dominated
- CGR MOD Cultivated Row Crops
- CGR022 Cultivated Pasture & Hay Grass Cultural Group
- Invasive Shrub
- Invasive Shrub/Native Shrub/Forb (Invasive shrub cover dominant)
- Mixed Native Shrub-tree/Invasive Shrub (native shrub cover dominant)
- Gravel (Water)
- Developed
- Open Water

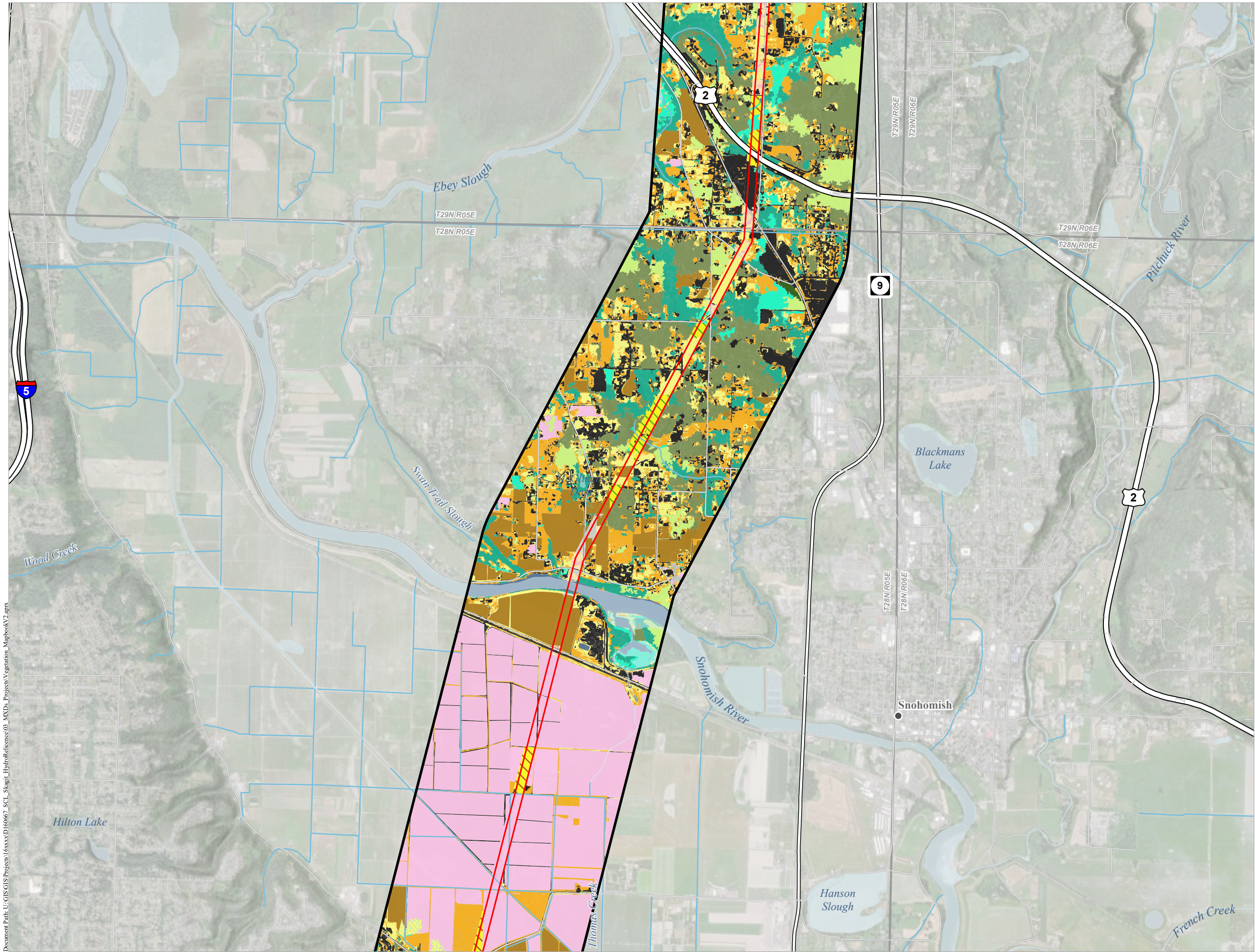


Seattle City Light

SKAGIT RIVER HYDROELECTRIC PROJECT (FERC NO. 553)

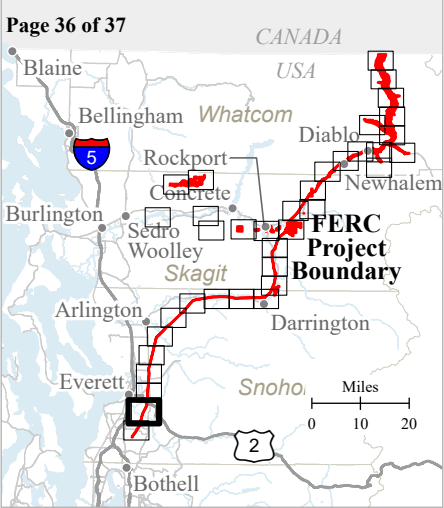
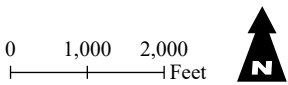
Created on 12/20/2021 by ESA for Seattle City Light.
City Light provides no warranty, expressed or implied, as to the accuracy, reliability or completeness of this data.
Data Source: [NAIP, 2015; NPS, 2020; SCL, 2020].

Document Path: U:\GIS\GIS\Projects\16xxxx\160667_SCL_Skagit_HydroReference03_MXD\Projects\Vegetation_Mapbook\2.aprx



**TR-01 VEGETATION STUDY
DRAFT RESULTS MAPBOOK**

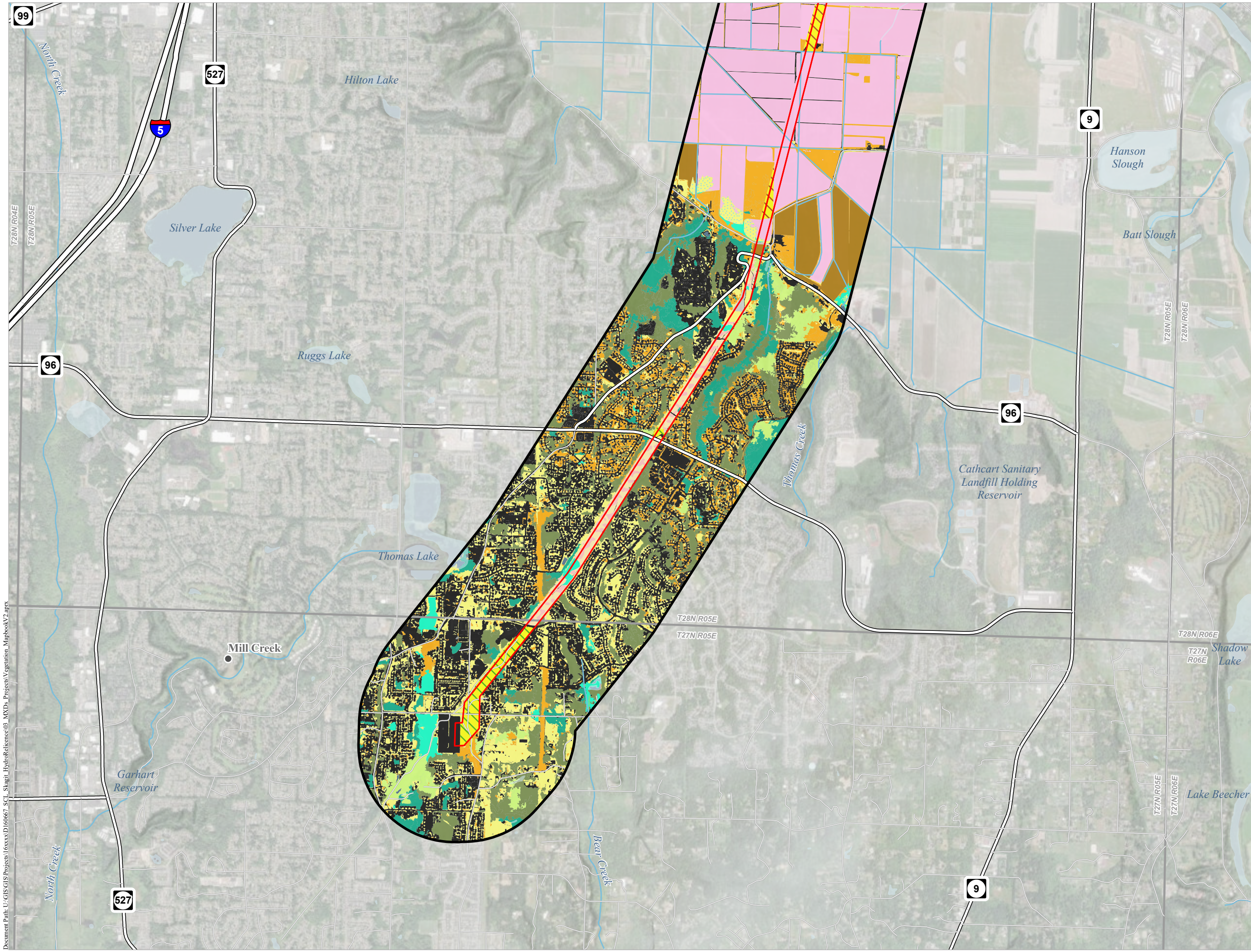
- FERC Project Boundary
- Streams
- Primary Highway
- Secondary Highway
- Other Road
- Vegetation Study Area
- Canopy Metrics Modeling Area
- G237 - North Pacific Red Alder - Bigleaf Maple - Douglas-fir Forest Group
- G240 - North Pacific Maritime Douglas-fir - Western Hemlock Forest Group
- G322 - Vancouverian Wet Shrubland
- G524 - Western North American Ruderal Wet Shrubland, Meadow, and Marsh
- G648 - Southern Vancouverian Lowland Ruderal Grassland & Shrubland
- G851 - North Pacific Lowland Riparian Forest & Woodland Group
- G853 - North Pacific Maritime Hardwood-Conifer Swamp
- Grass - Dominated
- CGR MOD Cultivated Row Crops
- CGR022 Cultivated Pasture & Hay Grass Cultural Group
- Invasive Shrub
- Mixed Native Shrub-tree/Invasive Shrub (native shrub cover dominant)
- Mixed Native Shrub/Tree/Forb (co-dominants)
- Gravel (Water)
- Developed
- Open Water



Seattle City Light

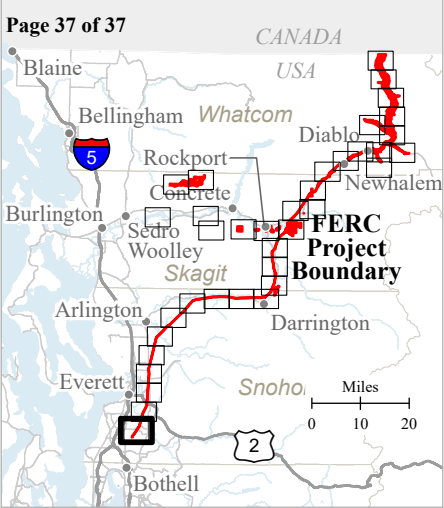
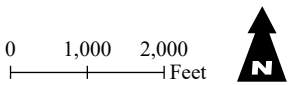
**SKAGIT RIVER HYDROELECTRIC
PROJECT (FERC NO. 553)**

Created on 12/20/2021 by ESA for Seattle City Light.
City Light provides no warranty, expressed or implied, as to the accuracy, reliability or completeness of this data.
Data Source: [NAIP, 2015; NPS, 2020; SCL, 2020].



**TR-01 VEGETATION STUDY
DRAFT RESULTS MAPBOOK**

- FERC Project Boundary
- Streams
- Primary Highway
- Secondary Highway
- Other Road
- Vegetation Study Area
- Canopy Metrics Modeling Area
- G237 - North Pacific Red Alder - Bigleaf Maple - Douglas-fir Forest Group
- G240 - North Pacific Maritime Douglas-fir - Western Hemlock Forest Group
- G322 - Vancouverian Wet Shrubland
- G524 - Western North American Ruderal Wet Shrubland, Meadow, and Marsh
- G648 - Southern Vancouverian Lowland Ruderal Grassland & Shrubland
- G851 - North Pacific Lowland Riparian Forest & Woodland Group
- Grass - Dominated
- CGR MOD Cultivated Row Crops
- CGR022 Cultivated Pasture & Hay Grass Cultural Group
- Invasive Shrub
- Mixed Native Shrub-tree/Invasive Shrub (native shrub cover dominant)
- Mixed Native Shrub/Tree/Forb (co-dominants)
- Gravel (Water)
- Developed
- Open Water



Seattle City Light

**SKAGIT RIVER HYDROELECTRIC
PROJECT (FERC NO. 553)**

Created on 12/20/2021 by ESA for Seattle City Light.
City Light provides no warranty, expressed or implied, as to the accuracy, reliability or completeness of this data.
Data Source: [NAIP, 2015; NPS, 2020; SCL, 2020].

Document Path: U:\GIS\GIS\Projects\16xxxx\160667_SCL_Skagit_HydroReference\03_MXD\Projects\Vegetation_Mapbook\2.aprx