



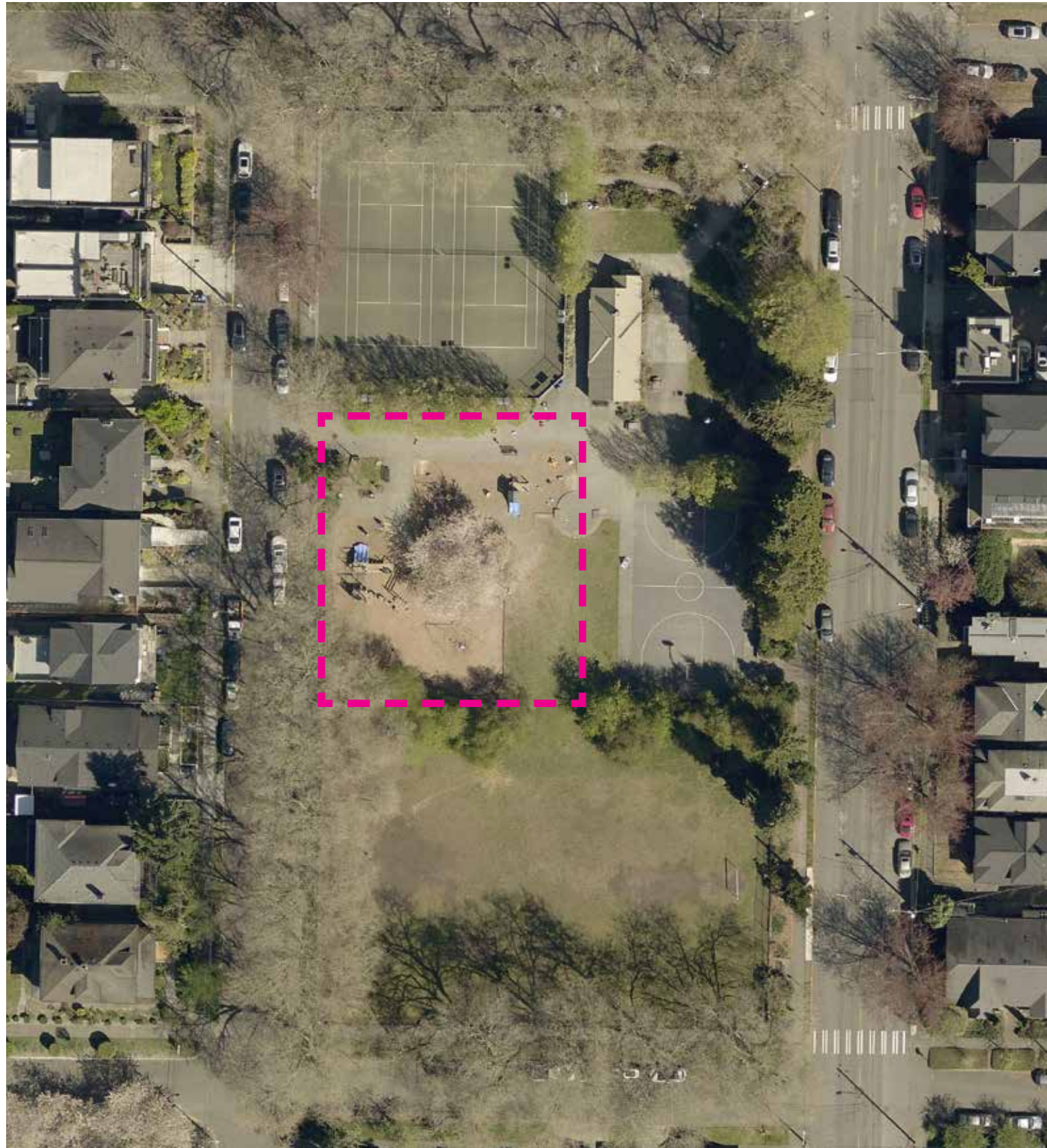
MADRONA PLAYGROUND PLAY AREA RENOVATION

Project Website: <https://www.seattle.gov/parks/about-us/projects/madrona-playground-play-area-renovation>



Seattle
Parks & Recreation

LOCATION, CONTEXT & SCOPE



Scope of work:

- Replace play equipment
- Provide accessible route to and through the play area

Budget: \$550,000

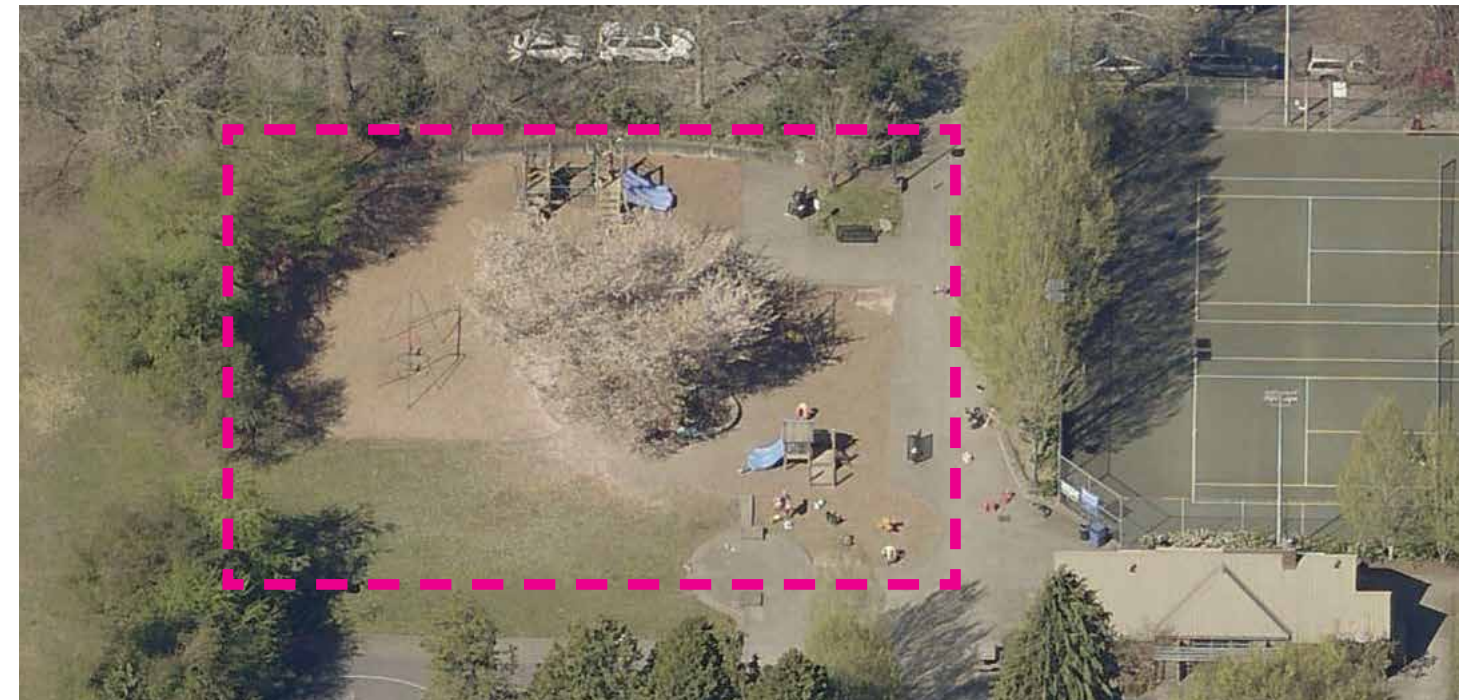
Schedule:

Planning **2023**

Design **2024**

Construction **2025**

Close Out & Opening **2025**



Site Challenges



Wood structures in need of replacement



Sandbox in poor condition



Soil compaction impacting roots of trees



Site Opportunities



Community art around play area



Adjacent amenities



Ample shade and seating for caregivers supervising children



Cherry tree grove provides seasonal interest and shade for play area

What we've heard from you...



What do you love about your playground?

Playground:

1. Swings
2. Monkey bars
3. Many activities - works well for variety of ages
4. Wooden structures

Surroundings:

1. Shade/trees
2. Lots of seating
3. Adjacent amenities
4. Community hub / gathering place



What is missing? What would make it even better?

1. Bigger/taller/net climbing structure
2. Zipline
3. Variety of swings (dish swing, 2-person swings)
4. Bigger/taller slides
5. More challenging play structure for bigger kids
6. Climbing wall/rock
7. Merry-go-round
8. See-saw
9. Monkey bars
10. Options for teens to play



What colors, themes or elements would make the playground feel more comfortable and/or welcoming for you?

1. Nature / forest / PNW theme
2. Greens and neutral colors
3. Natural materials
4. Rainbow theme
5. Bright colors

Option A



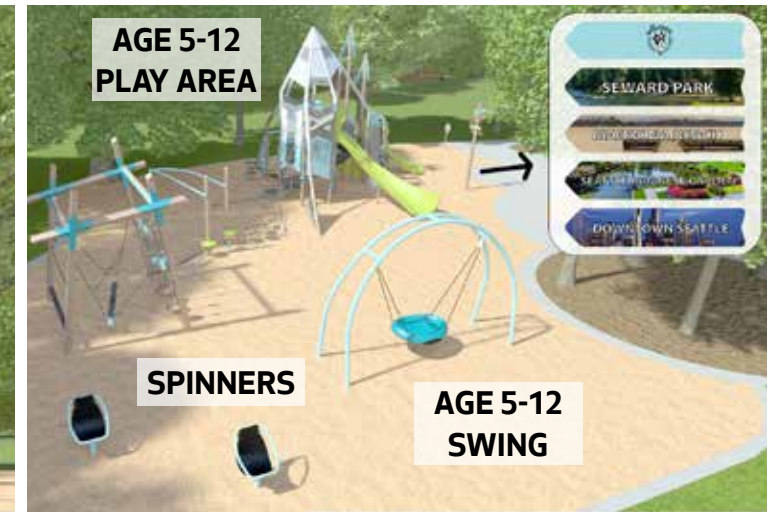
Option B



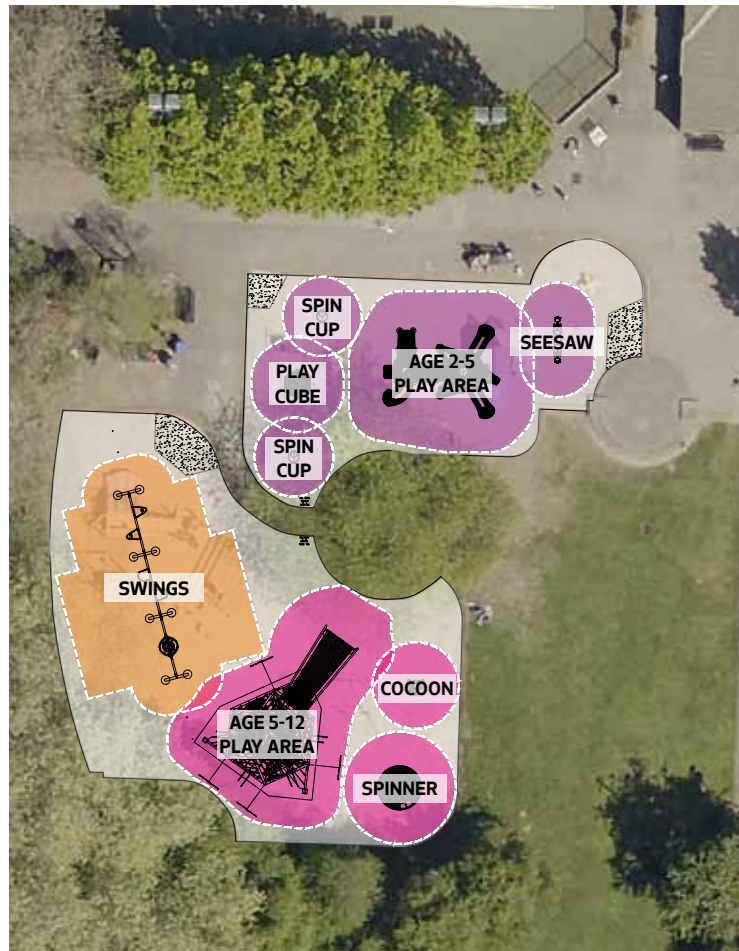
Option C



Option D

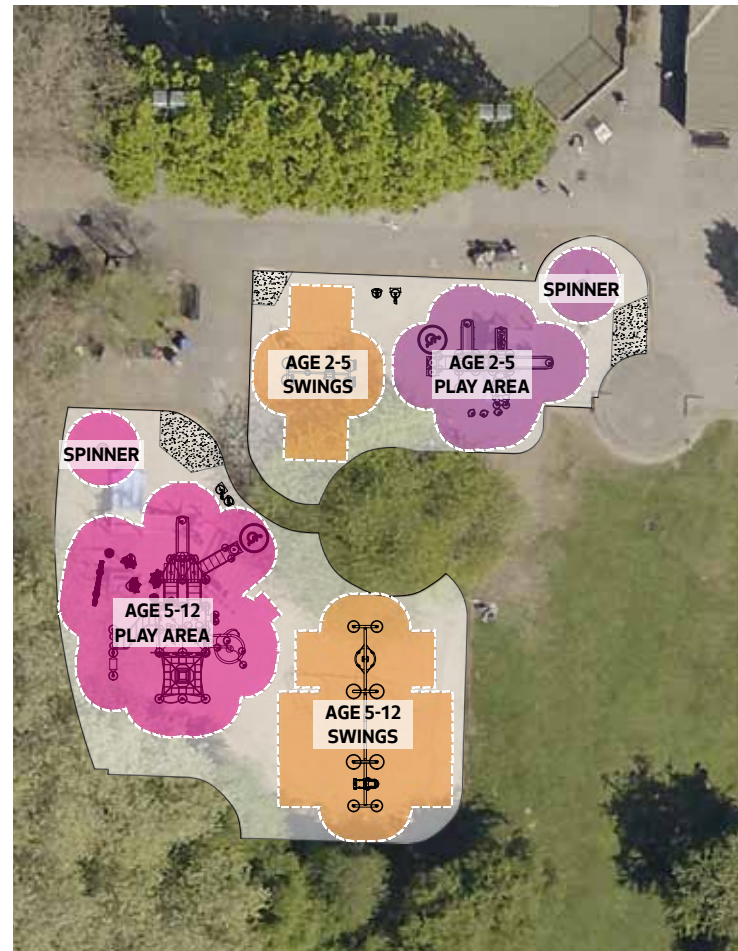


Concept Plan Options



OPTION A

- Age 2-5 play area includes:
 - A structure with 3 slides, a bridge, climbing features, musical elements and a sling
 - Two spin cups
 - Seesaw
 - Play cube
- Age 5-12 play area includes:
 - A large net climbing structure with a slide
 - Double decker cone spinner
 - Cozy cocoon spinner
- Proposed swings include:
 - 2 toddler swings
 - 2 belt swings
 - 1 dish swing



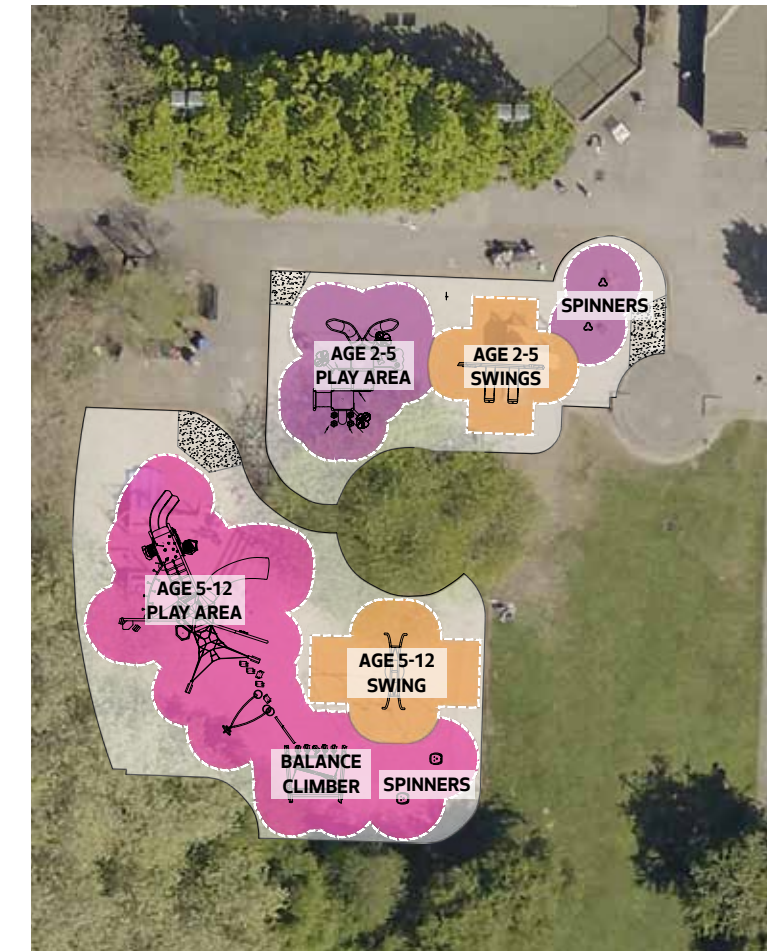
OPTION B

- Age 2-5 play area includes:
 - A structure with 2 slides, a bridge, climbing features and play panels.
 - Spinner
- Age 5-12 play area includes:
 - A large nature-inspired tower structure with 2 slides, climbing features, musical elements and monkey bars
 - Spinner
- Proposed swings include:
 - Age 2-5 swing set with a toddler swing and a tandem swing
 - Age 5-12 swing set with 2 belt swings, a dish swing and a tandem swing



OPTION C

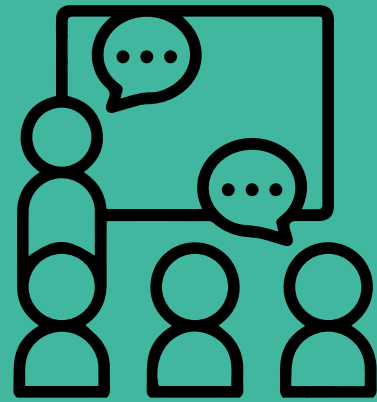
- Age 2-5 play area includes:
 - A structure with slides, a net bridge, climbing features and play panels.
 - Toddler play structures (giraffe and coupe)
 - Spinner
 - Spring toy
- Age 5-12 play area includes:
 - A large net climbing structure with a variety of play opportunities
 - Inclusive net carousel
 - Somersault bars
- Proposed swings include:
 - Age 2-5 swing set 2 toddler swings
 - Age 5-12 multi-user pendulum swing



OPTION D

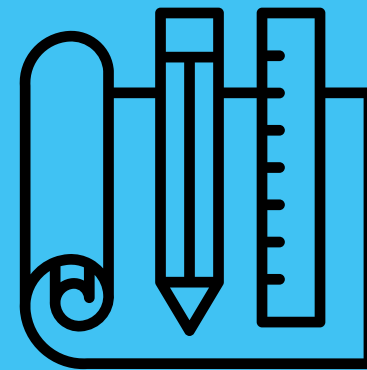
- Age 2-5 play area includes:
 - A garden themed structure with 2 slides, climbing features, a crawl tunnel, play panels, a table and more
 - Two saddle spinners
- Age 5-12 play area includes:
 - A mountain-inspired large play structure with 2 slides, variety of climbing features, monkey bars, balance beams and activity panels
 - Balance climber
 - 2 spinners
- Proposed swings include:
 - 2 toddler swings
 - 1 large dish swing (accessible, multi-user)

Next Steps...



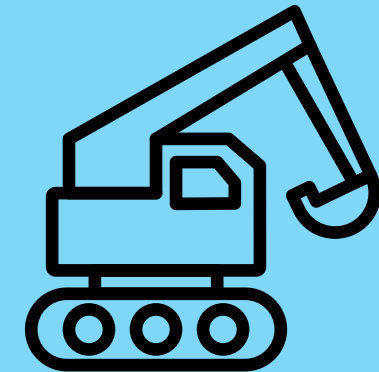
Saturday, November 4th from **9 am to noon** we will be hosting a public meeting at the Madrona Playfield Shelterhouse (adjacent to the play area and tennis courts). At this meeting, we will share some preliminary design ideas, and will listen to your feedback.

Following the meeting, we will post an online survey where you can provide input on these preliminary designs.



The online survey will be open for three weeks following the meeting and will close on **Monday, November 27th**.

We will use this input to prepare a concept plan, which will be shared with the community at another public meeting (online) in **December (date TBD)**. We will gather additional input during this meeting and then start drawing construction documents in 2024!



After the plans are completed in 2024, the play area will be built in 2025.

The play area will be closed during construction (we anticipate this to be about a 3-month period).

We'd like to hear from you! Please fill out the survey on our project page:

<https://seattle.surveymonkey.com/r/MadronaPlayArea>



Thank you!