

## Investing in the Health of the Sound and the Future of Our Region

June 2024

### Project Background

Seattle Public Utilities and King County Wastewater Treatment Division are building an underground storage tunnel to significantly reduce the amount of polluted stormwater and sewage that flows into the Lake Washington Ship Canal, Salmon Bay, and Lake Union from our sewer system during storms.

The tunnel is 2.7-miles long, running from Ballard to Wallingford, and approximately 18-ft, 10-in wide. It will temporarily hold more than 30 million gallons of sewage and stormwater during heavy rain. When the storm passes, the stored sewage and stormwater will be sent to King County's West Point Wastewater Treatment Plant.

### Queen Anne Site Elements

In summer 2020, Seattle Public Utilities and King County began work near West Ewing Mini Park for the Ship Canal Water Quality Project.

Work includes:

- Building a new 8-ft diameter tunnel under the Ship Canal to convey polluted stormwater and sewage to the new storage tunnel
- Building a drop shaft to carry sewage and stormwater into the new 8-ft diameter tunnel
- Installing new pipes and structures to convey polluted stormwater and sewage to the drop shaft
- Providing odor control piping to minimize odor



### What to Expect During Construction

- Construction-related noise, traffic, dust, and vibrations
- Parking restrictions and roadway detours
- Vehicle, pedestrian, and bicycle wayfinding and detour signage
- Ship Canal Trail detour through May 2024
- Protection or removal of some trees
- Closure of West Ewing Mini Park and adjacent parking lot through May 2024
- Increased truck traffic along W Nickerson St and 3rd Ave W

### Contact

For questions or comments about this project:

**Email:** [SPU\\_ShipCanalProject@seattle.gov](mailto:SPU_ShipCanalProject@seattle.gov)

**Call:** 206-701-0233

**Website:** [spushipcanal.participate.online](https://spushipcanal.participate.online)

For interpretation services please call 206-701-0233

如需要口譯服務 請撥電話號碼 206-701-0233

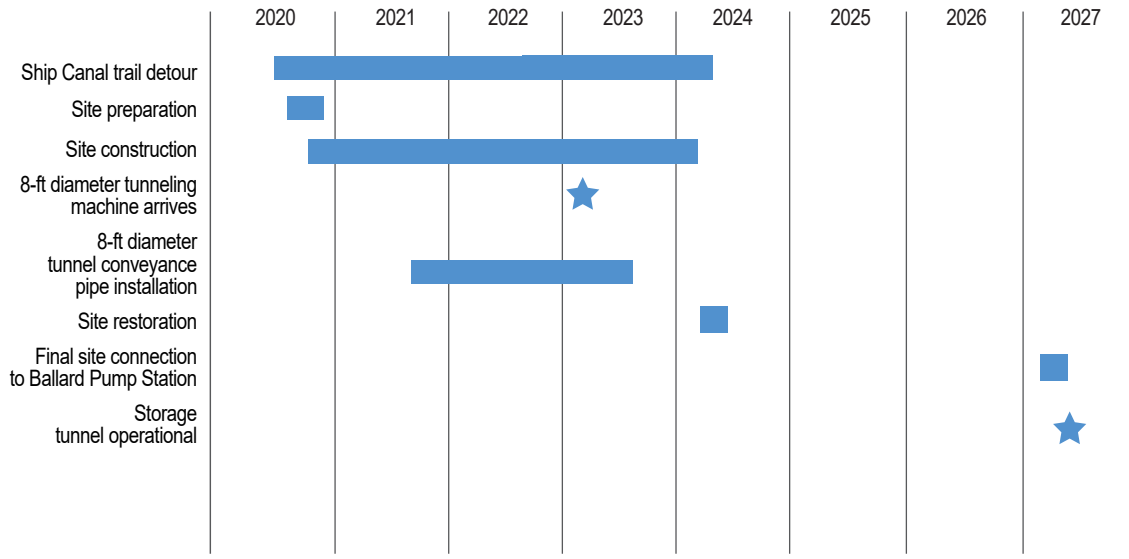
통역 서비스를 원하시면 206-701-0233 으로

Wixii turjubaan afka ah ku saabsan ,fadlan la soo xariir taleefoonka 206-701-0233

Para servicios de interpretación por favor llame al 206-701-0233

Para sa serbisyo ng tagapagpaliwanag tumawag sa 206-701-0233

## Queen Anne schedule



Updated June 2024

The following photos are examples from other construction sites

1



### Site Preparation

In summer 2020, crews mobilized to the work area and put fences up for the safety of crews and people nearby.

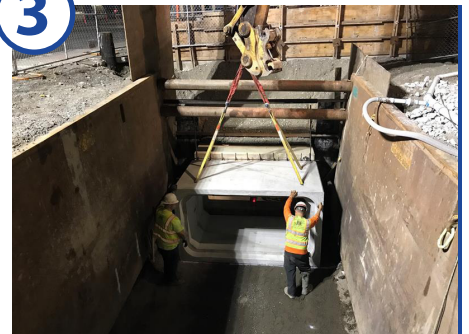
2



### Excavation & Shaft Construction

Crews dug beneath the surface to prepare and build underground structures that we will use to access the 8-ft diameter conveyance tunnel for operations and maintenance.

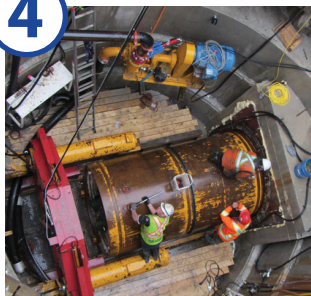
3



### Diversion Structure Construction

Crews have been excavating and building an underground diversion structure which will send untreated sewage and stormwater to the storage tunnel during heavy rains.

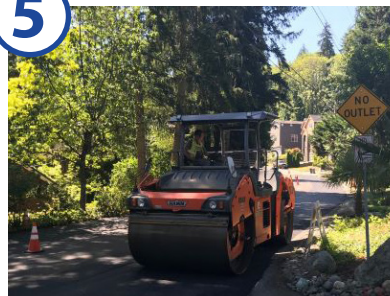
4



### 8-ft diameter Tunneling Machine Arrives

The new 8-ft diameter tunnel will send flows to the storage tunnel via Fremont. To build this tunnel, our tunnel boring machine launched under the Ship Canal starting in Fremont in summer 2021 and arrived in Queen Anne in 2023.

5



### Site Restoration

Once construction is complete all impacted areas will be restored to previous conditions. This will include the replanting of trees and repaving streets.