

**3/4" AND 1" METERED SERVICES  
PAVED STREET WITH CONCRETE WALK**  
NTS

| MATERIAL LIST |     |       |   |                      |
|---------------|-----|-------|---|----------------------|
| 3/4" SERVICE  |     |       |   |                      |
| ITEM          | QTY | UNITS | DESCRIPTION   | NUMBER               |
| 1             |     |       | NOT USED  |                      |
| 2             |     |       | NOT USED  |                      |
| 3             | 1   | EA    | 3/4" AWWA X 3/4" COMP BALL TYPE BRASS CORPORATION STOP  | MC # 4701 B-22-3/4   |
| 4             | *   | LF    | 3/4" COPPER SERVICE TUBE, TYPE K W/80 MIL WAX TAPE WRAP | TRENTON # 1 OR EQ.   |
| 5             | 1   | EA    | 3/4" METER SETTER W/SINGLE TOP SHUT-OFF COCK            | MC # 22-218W X 22-33 |
| 6             | 1   | EA    | #2 METER BOX AND LID                                    | OLYMPIC F. SM29      |
| 7             | 1   | EA    | 5/8" x 3/4" METER                                       |                      |
| 8             | 1   | EA    | 13" X 18" INSULATION BLANKET                            |                      |
| 9             | 1   | EA    | 3/4" ADAPTER COUPLING, COMP X MPT                       |                      |
| 10            | 1   | EA    | 3/4" DIELECTRIC UNION, RPT X RPT                        |                      |
| 11            | *   | LF    | IF WATERMAIN IS COATED, WRAP W/80 MIL WAX TAPE WRAP     | TRENTON # 1 OR EQ.   |

\* LENGTH AS NEEDED

| MATERIAL LIST |     |       |   |                      |
|---------------|-----|-------|---|----------------------|
| 1" SERVICE    |     |       |   |                      |
| ITEM          | QTY | UNITS | DESCRIPTION   | NUMBER               |
| 1             |     |       | NOT USED  |                      |
| 2             |     |       | NOT USED  |                      |
| 3             | 1   | EA    | 1" AWWA X 1" MPT BALL TYPE BRASS CORPORATION STOP     | FORD FB1000          |
| 4             | *   | LF    | 1" COPPER SERVICE TUBE, TYPE K W/80 MIL WAX TAPE WRAP | TRENTON # 1 OR EQ.   |
| 5             | 1   | EA    | 1" METER SETTER W/SINGLE TOP SHUT-OFF COCK            | MC # 22-418W X 22-44 |
| 6             | 1   | EA    | #2 METER BOX AND LID                                  | OLYMPIC F. SM29      |
| 7             | 1   | EA    | 1" METER, RELOCATE EXISTING OR SPU WILL PROVIDE       |                      |
| 8             | 1   | EA    | 13" X 18" INSULATION BLANKET                          |                      |
| 9             | 1   | EA    | 1" ADAPTER COUPLING, COMP X MPT                       |                      |
| 10            | 1   | EA    | 1" DIELECTRIC UNION, RPT X RPT                        |                      |
| 11            | *   | LF    | IF WATERMAIN IS COATED, WRAP W/80 MIL WAX TAPE WRAP   | TRENTON # 1 OR EQ.   |

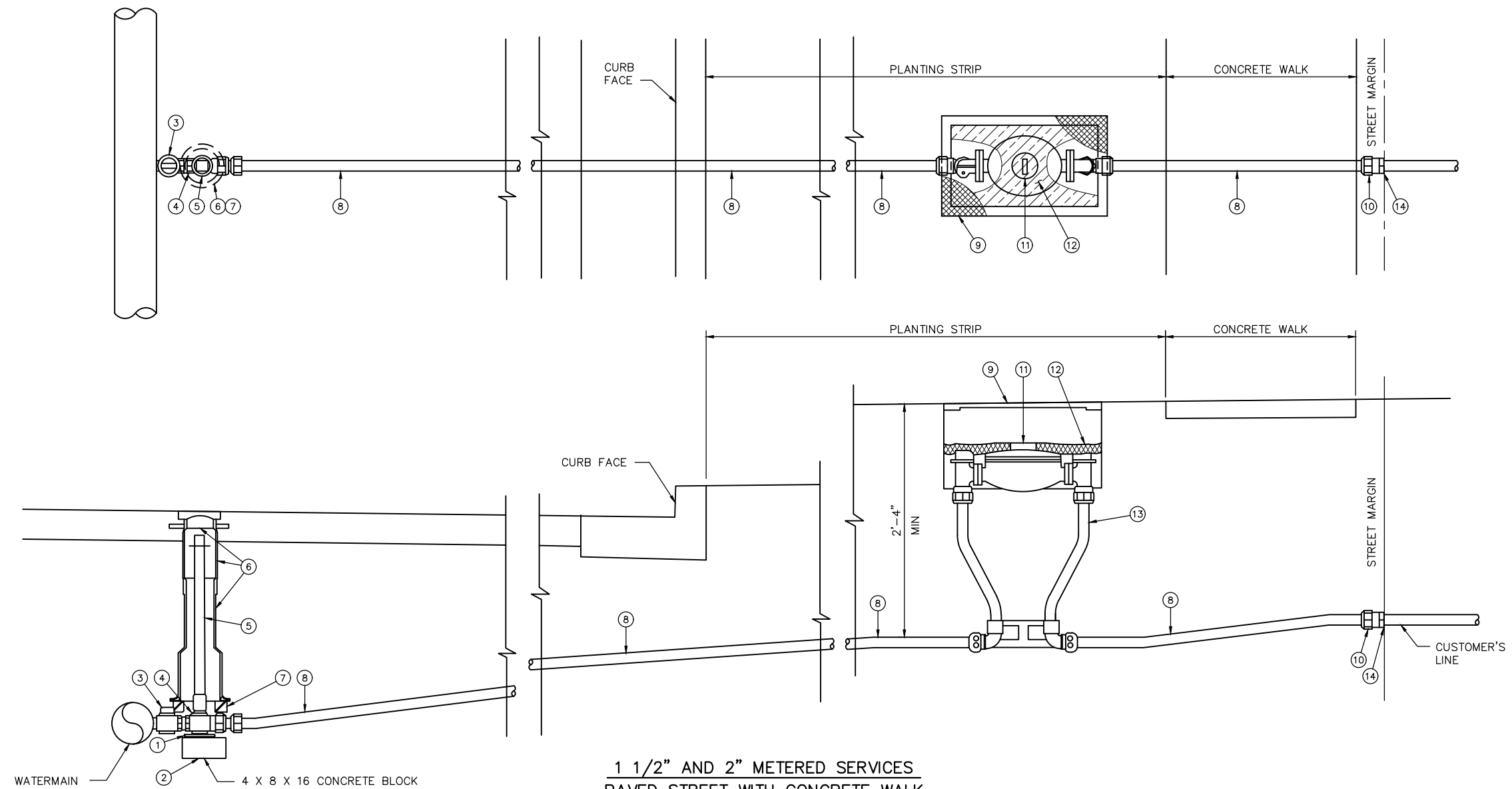
\* LENGTH AS NEEDED

| REVISIONS |      |             | SIGNATURE & TITLE |  | DATE |
|-----------|------|-------------|-------------------|--|------|
| NO.       | DATE | DESCRIPTION | APPROVED          |  |      |
|           |      |             |                   |  |      |
|           |      |             |                   |  |      |
|           |      |             |                   |  |      |
|           |      |             |                   |  |      |

**SEATTLE PUBLIC UTILITIES  
WATER BRANCH**

**STANDARD PLAN  
3/4" AND 1" WATER METER SERVICES  
INSTALLATION AND MATERIALS LIST**

|                 |                          |
|-----------------|--------------------------|
| DATE 11/10/2022 | VAULT/STD PLAN NO. 735-1 |
| SHEET 1 OF 1    | SCALE NOT TO SCALE       |



**1 1/2" AND 2" METERED SERVICES  
PAVED STREET WITH CONCRETE WALK**  
NTS

| MATERIAL LIST  |           |       |  |                       |
|----------------|-----------|-------|--|-----------------------|
| 1 1/2" SERVICE |           |       |  |                       |
| ITEM           | QTY       | UNITS | DESCRIPTION  | NUMBER                |
| 1              | AS NEEDED | EA    | STEEL WEDGES   |                       |
| 2              | 1         | EA    | 4 X 8 X 16 CONCRETE BLOCK                                  |                       |
| 3              | 1         | EA    | 1 1/2" AWWA X 1 1/2" MIPT BALL TYPE BRASS CORPORATION STOP | FORD FB400-6          |
| 4              | *         | EA    | 1 1/2" BRASS CURB STOP, FIPT X COMP & W/ 2" OPERATING NUT  | MC # 6102-22-1 1/2 IN |
| 5              | 1         | EA    | VALVE OPERATING NUT EXTENSION, SEATTLE STD PLAN No. 315.1b |                       |
| 6              | 1         | EA    | VALVE BOX W/LID, SEATTLE PLAN No. 315.1.a                  |                       |
| 7              | 1         | EA    | 10" O.D. X 6" I.D. X 2" THICK PLASTIC FOAM RING            | ETHANFOAM             |
| 8              | AS NEEDED | LF    | 1 1/2" COPPER SERVICE TUBE, TYPE K W/80 MIL WAX TAPE WRAP  | TRENTON # 1 OR EQ.    |
| 9              | 1         | EA    | #3 METER BOX AND LID                                       | OLYMPIC F. SM30       |
| 10             | 1         | EA    | 1 1/2" ADAPTER COUPLING, COMP X MIPT                       |                       |
| 11             | 1         | EA    | 1 1/2" METER, RELOCATE EXISTING OR SPU WILL PROVIDE        |                       |
| 12             | 1         | EA    | 15" X 30" INSULATION BLANKET                               |                       |
| 13             | 1         | EA    | 1 1/2" METER SETTER W/SHUT-OFF COCKS ON EACH END           | MC # 22B625WW22665    |
| 14             | 1         | EA    | 1 1/2" DIELECTRIC UNION, FIPT X FIPT                       |                       |
| 15             | AS NEEDED | LF    | IF WATERMAIN IS COATED, WRAP W/80 MIL WAX TAPE WRAP        | TRENTON # 1 OR EQ.    |

\* LENGTH AS NEEDED

| MATERIAL LIST |           |       |  |                     |
|---------------|-----------|-------|--|---------------------|
| 2" SERVICE    |           |       |  |                     |
| ITEM          | QTY       | UNITS | DESCRIPTION  | NUMBER              |
| 1             | AS NEEDED | EA    | STEEL WEDGES   |                     |
| 2             | 1         | EA    | 4 X 8 X 16 CONCRETE BLOCK                                  |                     |
| 3             | 1         | EA    | 1 1/2" AWWA X 2" MIPT BALL TYPE BRASS CORPORATION STOP     | MC # 3121B-1 1/2 IN |
| 4             | *         | EA    | 2" BRASS CURB STOP, FIPT X COMP & W/ 2" OPERATING NUT      | MC # 6102-22-2      |
| 5             | 1         | EA    | VALVE OPERATING NUT EXTENSION, SEATTLE STD PLAN No. 315.1b |                     |
| 6             | 1         | EA    | VALVE BOX W/LID, SEATTLE PLAN No. 315.1.a                  |                     |
| 7             | 1         | EA    | 10" O.D. X 6" I.D. X 2" THICK PLASTIC FOAM RING            | ETHANFOAM           |
| 8             | AS NEEDED | LF    | 2" COPPER SERVICE TUBE, TYPE K W/80 MIL WAX TAPE WRAP      | TRENTON #1 OR EQUAL |
| 9             | 1         | EA    | #3 METER BOX AND LID                                       | OLYMPIC F. SM30     |
| 10            | 1         | EA    | 2" ADAPTER COUPLING, COMP X MIPT                           |                     |
| 11            | 1         | EA    | 2" METER, RELOCATE EXISTING OR SPU WILL PROVIDE            |                     |
| 12            | 1         | EA    | 15" X 30" INSULATION BLANKET                               |                     |
| 13            | 1         | EA    | 2" METER SETTER W/SHUT-OFF COCKS ON EACH END               | MC # 22B715WW22775  |
| 14            | 1         | EA    | 2" DIELECTRIC UNION, FIPT X FIPT                           |                     |
| 15            | AS NEEDED | LF    | IF WATERMAIN IS COATED, WRAP W/80 MIL WAX TAPE WRAP        | TRENTON #1 OR EQUAL |

\* LENGTH AS NEEDED

| REVISIONS |      |          |             | SIGNATURE & TITLE |  | DATE |
|-----------|------|----------|-------------|-------------------|--|------|
| NO.       | DATE | INITIALS | DESCRIPTION | APP'D             |  |      |
|           |      |          |             |                   |  |      |
|           |      |          |             |                   |  |      |
|           |      |          |             |                   |  |      |
|           |      |          |             |                   |  |      |

|  |                                    |
|--|------------------------------------|
| <b>SEATTLE PUBLIC UTILITIES<br/>WATER BRANCH</b>                                       |                                    |
| <b>STANDARD PLAN<br/>1 1/2" AND 2" WATER METER<br/>INSTALLATION AND MATERIALS LIST</b> |                                    |
| DATE 12/11/2002<br>SHEET 1 OF 1  | VAULT/STD PLAN NO.<br><b>735-2</b> |