

# GARBAGE REPORT

2nd Quarter 2019

Seattle Public Utilities, Economic Services Section

Report Date: August 12, 2019

Email: SPU\_SW\_Reports@seattle.gov

## Total City Tonnage Breakdown

<b>Self Haul</b>		
Q2 Self Haul Cars	1113 Tons	6.4% increase vs. same period in 2018
2019 Cumulative Self Haul Cars:	1997 Tons	10.8% increase vs. same period in 2018
Q2 Self Haul Trucks <sup>1</sup> :	25,625 Tons	0.3% increase vs. same period in 2018
2019 Cumulative Self Haul Trucks:	47,185 Tons	0.7% decrease vs. same period in 2018
2019 Cumulative Self Haul Cars & Trucks:	49,182 Tons	0.3% decrease vs. same period in 2018
<b>Residential</b>		
Q2 Single Family:	14,509 Tons	0.2% decrease vs. same period in 2018
2019 Cumulative Single Family:	28,449 Tons	0.5% decrease vs. same period in 2018
Q2 Multi Family:	12,810 Tons	2.7% increase vs. same period in 2018
2019 Cumulative Multi Family:	24,877 Tons	1.1% increase vs. same period in 2018
Q2 Total Residential:	27,319 Tons	1.1% increase vs. same period in 2018
2019 Cumulative Total Residential:	53,326 Tons	0.2% increase vs. same period in 2018
<b>Commercial</b>		
Q2 Commercial:	34,313 Tons	1.4% decrease vs. same period in 2018
2019 Cumulative Commercial:	66,302 Tons	4.1% decrease vs. same period in 2018
<b>Total Tons Collected</b>		
Q2 Total Collected:	88,370 Tons	0.0% No change vs. same period in 2018
2019 Cumulative Total Collected:	168,810 Tons	1.7% decrease vs. same period in 2018
<b>Total Tons Delivered To Arlington<sup>2</sup></b>		
Q2 Total Delivered:	93,867 Tons	3.7% increase vs. same period in 2018
2019 Cumulative Total Delivered:	176,648 Tons	1.1% increase vs. same period in 2018

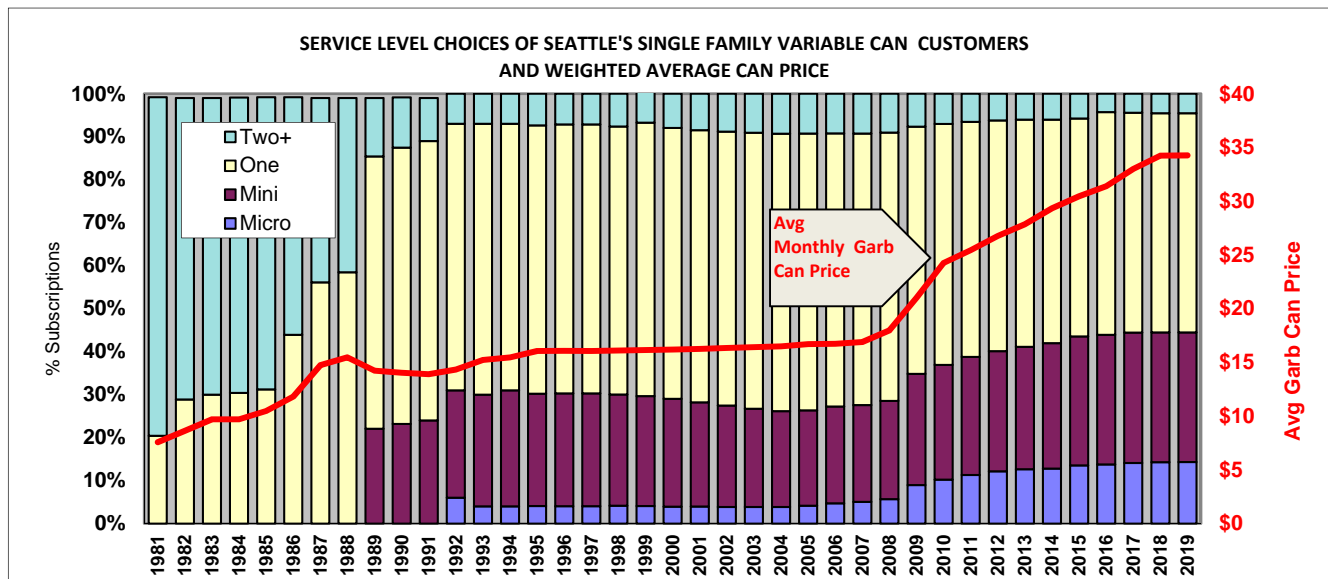
## Selected Garbage Customer Statistics – June 2019

<b>Single Family (4 or less households)</b>		
# SF Households	168,301 HHs	0.9% increase vs. same period in 2018
Average Monthly Pounds Garbage per HH	56.5 Lbs	0.7% decrease vs. same period in 2018
<b>Multi Family (5 or more households)</b>		
# MF Households	192,806 HHs	4.7% increase vs. same period in 2018
Average Monthly Pounds Garbage per HH	43.4 Lbs	3.2% decrease vs. same period in 2018

<sup>1</sup> An estimated 38% of the self-haul truck tons are commercial according to a waste stream sampling study conducted in 2012.

<sup>2</sup> Total tons collected not equal to total tons delivered due to operational factors.

## Variable Can Service Levels for Single Family Can Customers



	Micro	Mini	One	Two+
<b>1981</b>			18.00%	82.00%
<b>1982</b>			29.00%	71.00%
<b>1985</b>			30.00%	70.00%
<b>1986</b>			54.00%	46.00%
<b>1987</b>			62.00%	38.00%
<b>1989</b>		24.00%	64.00%	12.00%
<b>1992</b>	6.00%	25.00%	62.00%	7.00%
<b>1993</b>	4.00%	26.00%	63.00%	7.00%
<b>1994</b>	4.00%	27.00%	62.00%	7.00%
<b>1995</b>	4.06%	26.15%	62.44%	7.35%
<b>1997</b>	4.04%	26.23%	62.59%	7.14%
<b>1998</b>	4.16%	25.88%	62.35%	7.61%
<b>1999</b>	4.06%	25.60%	63.62%	7.72%
<b>2000</b>	3.93%	25.08%	63.02%	7.97%
<b>2001</b>	3.96%	24.24%	63.32%	8.49%
<b>2002</b>	3.85%	23.62%	63.72%	8.82%
<b>2003</b>	3.84%	22.85%	64.23%	9.08%
<b>2004</b>	3.86%	22.31%	64.54%	9.30%
<b>2005</b>	4.13%	22.22%	64.37%	9.28%
<b>2006</b>	4.72%	22.49%	63.57%	9.21%
<b>2007</b>	5.05%	22.50%	63.17%	9.28%
<b>2008</b>	5.66%	22.85%	62.45%	9.04%
<b>2009</b>	8.93%	25.89%	57.51%	7.67%
<b>2010</b>	10.21%	26.69%	56.08%	7.02%
<b>2011</b>	11.31%	27.45%	54.72%	6.53%
<b>2012</b>	12.13%	27.98%	53.68%	6.21%
<b>2013</b>	12.62%	28.49%	52.85%	6.04%
<b>2014</b>	12.75%	28.66%	52.58%	6.02%
<b>2015</b>	12.90%	29.29%	51.83%	5.98%
<b>2016</b>	13.99%	30.49%	51.22%	4.30%
<b>2017</b>	14.02%	30.52%	51.15%	4.31%
<b>2018</b>	14.26%	30.20%	51.01%	4.53%
<b>2019</b>	<b>14.25%</b>	<b>30.40%</b>	<b>50.78%</b>	<b>4.58%</b>

### Monthly Variable Can Rates

Micro (12 gal)	\$23.30
Mini (19 gal)	\$28.55
One Can (32 gal)	\$37.15
Two Cans (64 gal)	\$74.30
Each Add'l Can	\$11.55

### Residential Dumpster Service

Most Common Monthly Rate\*  
\$234.47

\*This is the rate for a one cubic yard un-compacted container picked up once per week. Residential dumpster service rates vary based on the number and size of containers and the number of pickups per week

### Self Haul Rates

Cars: \$30 per trip  
Trucks\*: \$145.00 per ton  
( \$30.00 minimum)

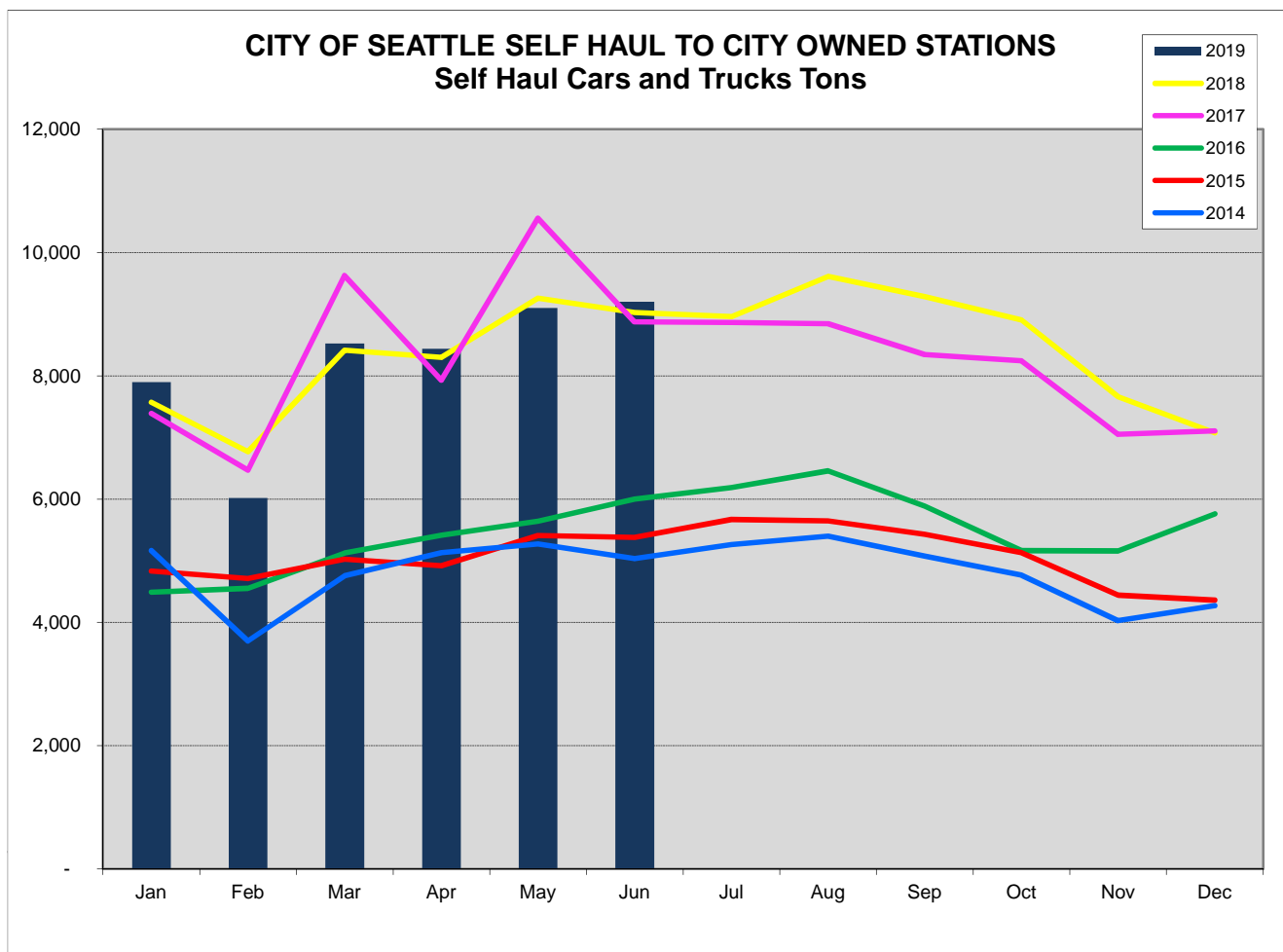
\*Vans & pickup trucks pay the per ton truck rate.

## CITY OF SEATTLE GARBAGE TONNAGE REPORT

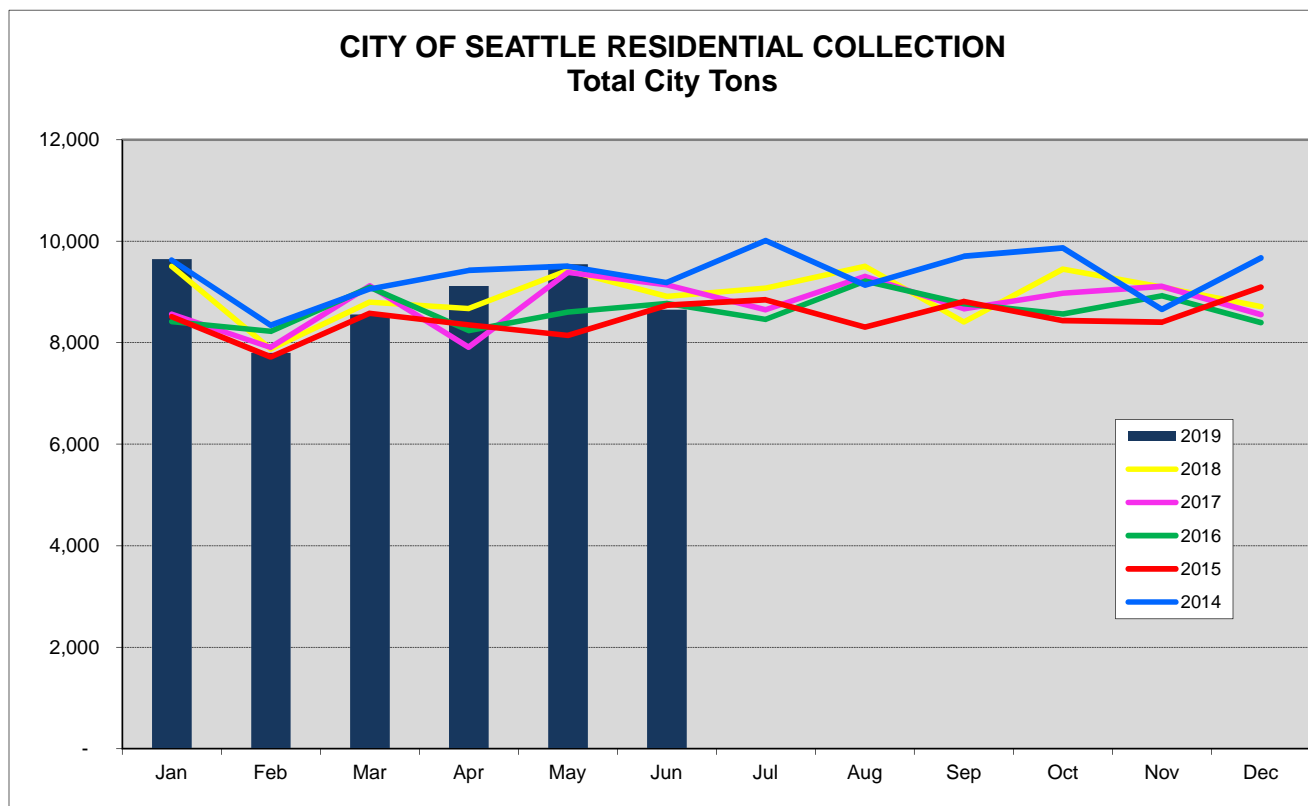
		SELF HAUL			RESIDENTIAL										COMMERCIAL GARBAGE										GRAND	
		Self Haul <sup>23</sup>		Total	Recology/ CleanScapes <sup>19</sup>		Waste Management		TOTALS					Recology/Cleanscapes			Rabanco		Waste Management			TOTAL		TOTAL		
Year	Month	Cars <sup>2</sup>	Trucks	Self Haul	City Stations	Eastmont/ Lander <sup>20</sup>	City Stations	East- mont	Single Family	SF <sup>24</sup> Lbs/HH	Multi Family	MF <sup>24</sup> Lbs/HH	Total Residential	City Stations	East- mont	Recol- ogy <sup>22</sup>	City Stations	Lander <sup>21</sup>	East- mont	City Stations	Lander	East- mont	COMMERCIAL	GARBAGE		
2018	1	240	7,331	7,571	4,899	0	4,609	0	5,127	62	4,381	49	9,508	5,482	0	88		937		5,567		539	12,613	29,692		
2018	2	225	6,542	6,768	4,074	1	3,805	0	4,192	51	3,687	41	7,879	4,720	3	135		712		4,259		429	10,257	24,904		
2018	3	291	8,121	8,412	4,576	0	4,229	0	4,733	57	4,073	45	8,805	5,275	0	26		787		4,830		543	11,461	28,678		
2018	4	305	7,991	8,296	4,528	0	4,150	0	4,605	55	4,073	45	8,678	5,201	0	136		771		4,712		498	11,318	28,292		
2018	5	378	8,882	9,260	4,888	0	4,534	2	5,122	61	4,303	47	9,425	5,546	0	80		822		4,970		462	11,879	30,564		
2018	6	363	8,664	9,027	4,663	0	4,255	0	4,817	58	4,101	45	8,918	5,429	0	169		774		4,703		532	11,608	29,553		
2018	7	393	8,565	8,958	4,636	28	4,050	368	4,916	59	4,167	45	9,082	5,250	303	145		813		4,395		914	11,820	29,860		
2018	8	356	9,255	9,611	4,934	0	4,573	0	5,103	61	4,404	47	9,507	5,765	0	89		838		5,170		472	12,334	31,452		
2018	9	340	8,943	9,283	4,428	0	3,985	1	4,519	54	3,895	42	8,413	5,037	0	157		731		4,346		474	10,745	28,441		
2018	10	298	8,606	8,904	4,955	0	4,494	3	5,033	60	4,419	47	9,452	5,584	0	31		820		5,042		435	11,913	30,269		
2018	11	248	7,413	7,661	4,726	0	4,377	0	4,915	59	4,188	45	9,102	5,175	0	107		823		4,574		455	11,134	27,897		
2018	12	261	6,815	7,076	4,530	0	4,185	0	4,644	56	4,071	43	8,715	5,161	0	108		834		4,579		440	11,122	26,913		
2019	1	283	7,617	7,900	5,026	0	4,623	0	5,221	62	4,428	47	9,649	5,264	0	168		882		4,828		489	11,631	29,180		
2019	2	228	5,790	6,019	4,064	0	3,734	0	4,152	50	3,646	38	7,798	4,508	1	111		661		3,855		402	9,537	23,354		
2019	3	372	8,153	8,525	4,475	0	4,079	6	4,567	54	3,993	42	8,560	5,035	0	109		734		4,417		527	10,821	27,906		
2019	4	320	8,118	8,438	4,784	0	4,270	66	4,826	58	4,295	45	9,121	5,197	0	143		761		4,807		486	11,394	28,953		
2019	5	398	8,702	9,100	4,995	0	4,554	0	5,110	61	4,439	46	9,549	5,460	0	148		796		4,797		564	11,765	30,414		
2019	6	395	8,806	9,200	4,591	0	4,058	0	4,573	54	4,076	42	8,649	5,391	0	112		708		4,388		554	11,153	29,003		

1 The two city owned recycling and disposal stations are NRDS in the north end of the city and SRDS in the South end.

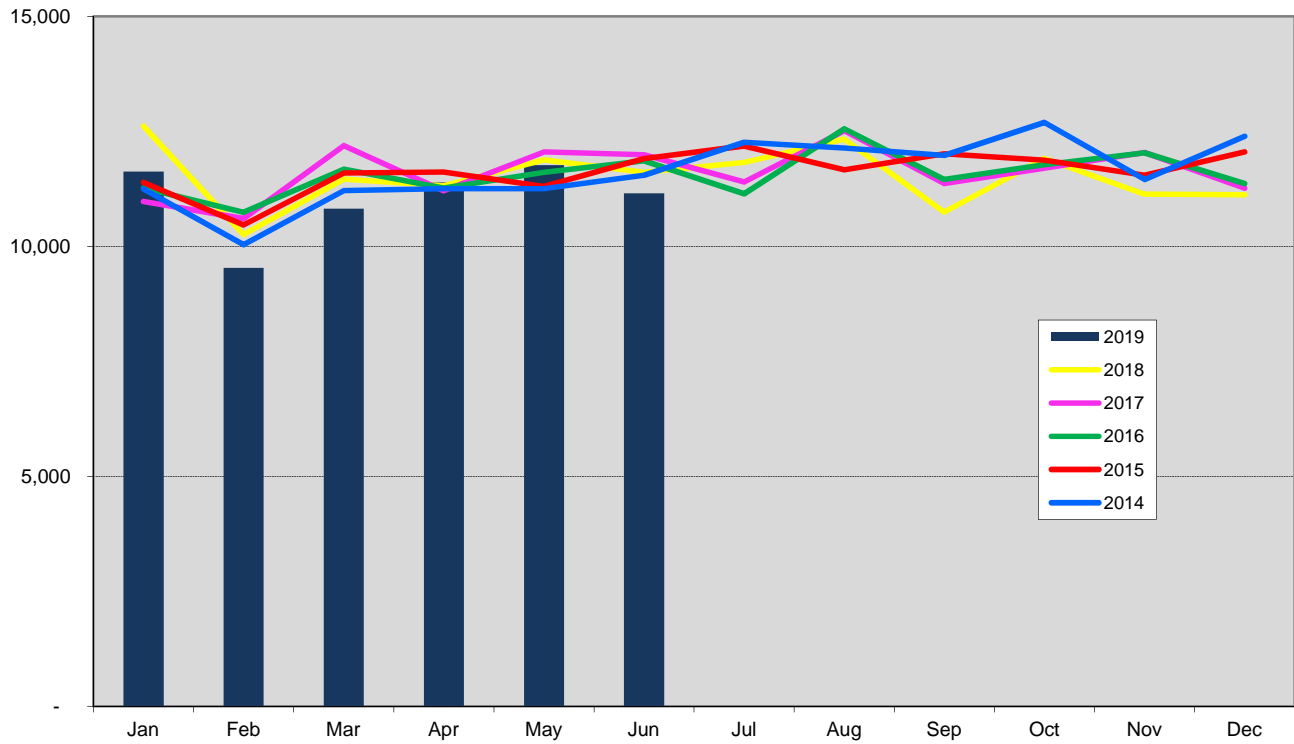
2 Beginning Feb 2014 car trips are weighed. Prior to this, car weights were calculated based on composition study results.



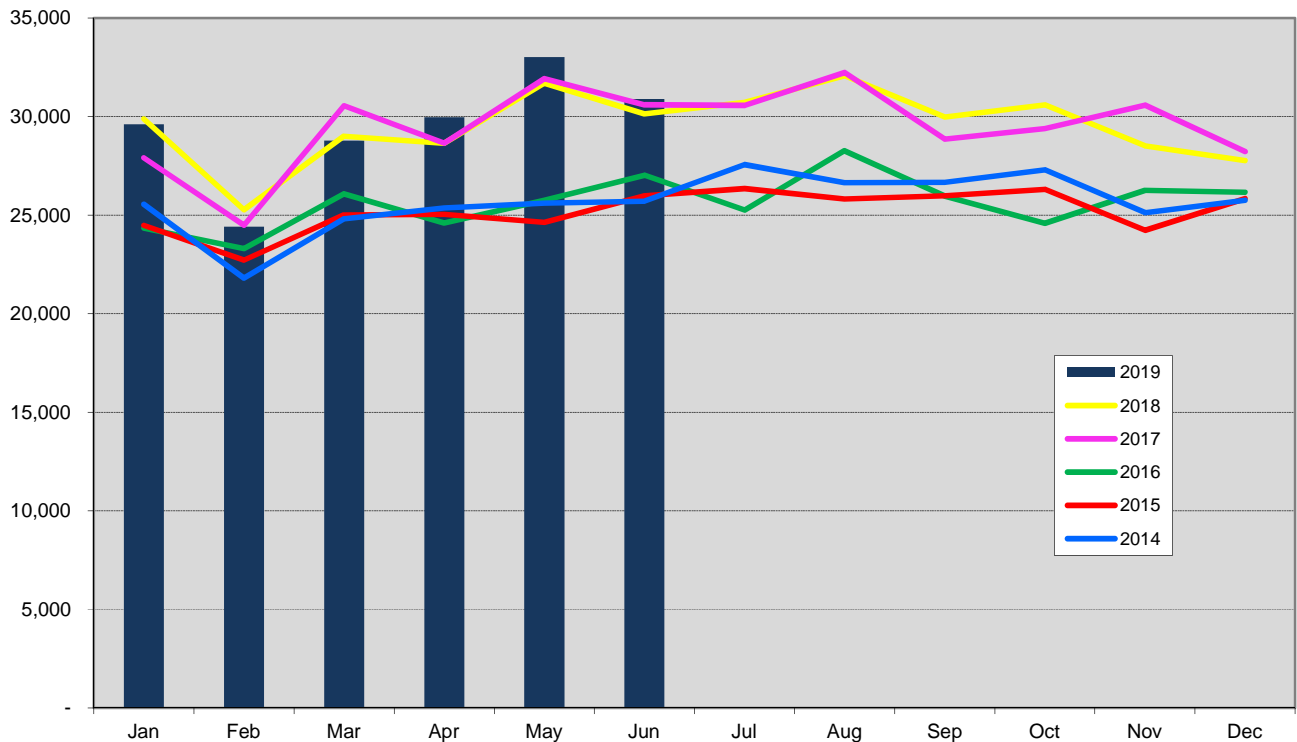
The North Transfer Station was closed from January 2014 - November 2016 for a rebuild.



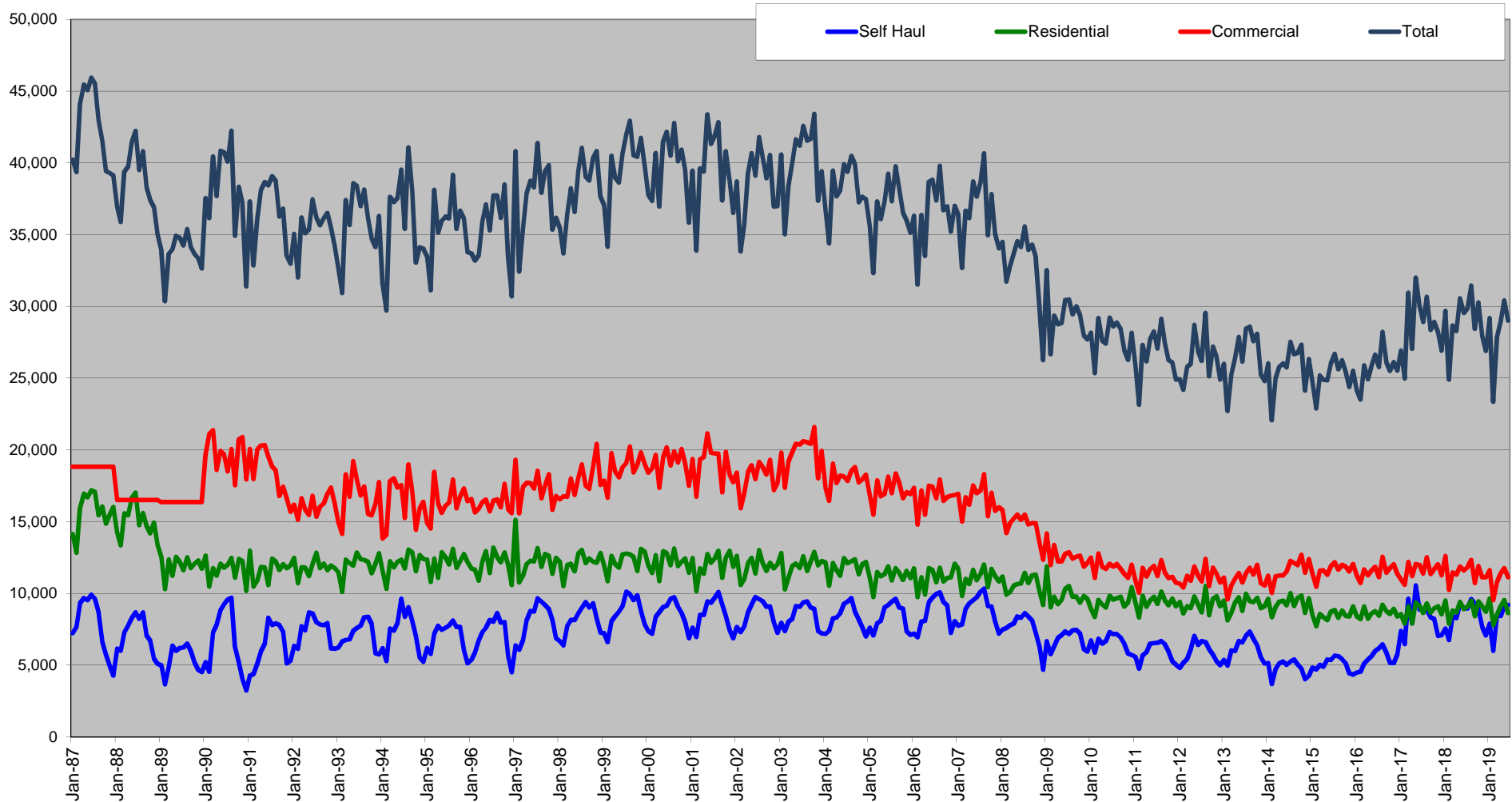
### CITY OF SEATTLE Commercial Garbage Total Tons Collected



### CITY OF SEATTLE TOTAL OUTBOUND TONS Total Tons Delivered to Arlington Landfill



# City of Seattle Garbage Disposal



Monthly commercial tonnage for 1987-1989 estimated from annual data.