



Outside Citywide

Building an integrated, equitable, and inspiring public space network for a thriving, green Seattle.

JULY 9, 2020

Credit: Samuel Borges Photography

Public Space is critical infrastructure for a thriving city.

Health + Wellbeing



- Environmental Justice
- Recreation + Exercise
- Play + Child Development
- Mental Health
- Food Security

Environment + Ecology



- Healthy Watersheds
- Habitat
- Carbon Sequestration
- Flood Protection
- Public Safety

Society + Culture



- Economy + Small Businesses
- Democracy + Political Expression
- Arts, Festivals, + Performance
- Social Cohesion
- Strong Communities

What We Have Today and Visions for Tomorrow



SEATTLE'S PUBLIC SPACE NETWORK

■ Seattle Parks and Recreation



Arboretum



Lincoln Park



Seward Park

SEATTLE'S PUBLIC SPACE NETWORK

- Seattle Parks and Recreation
- Seattle Center
- Port of Seattle and Army Corps of Engineers parks
- SPU public space
- Seattle Housing Authority parks
- Public schoolyards
- Campus green spaces
- Cemeteries and private golf courses



B.F. Day Elementary School Playground



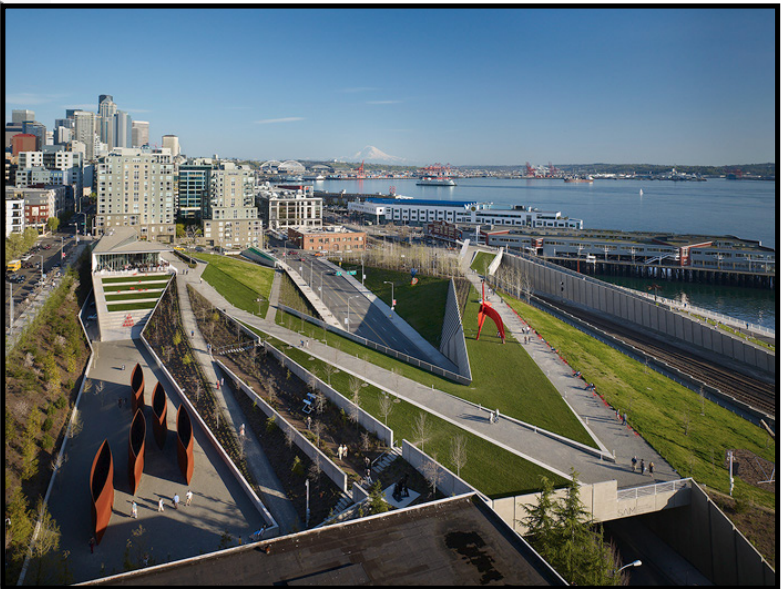
Seattle Pacific University Campus



Meadowbrook Pond



Union Bay Natural Area



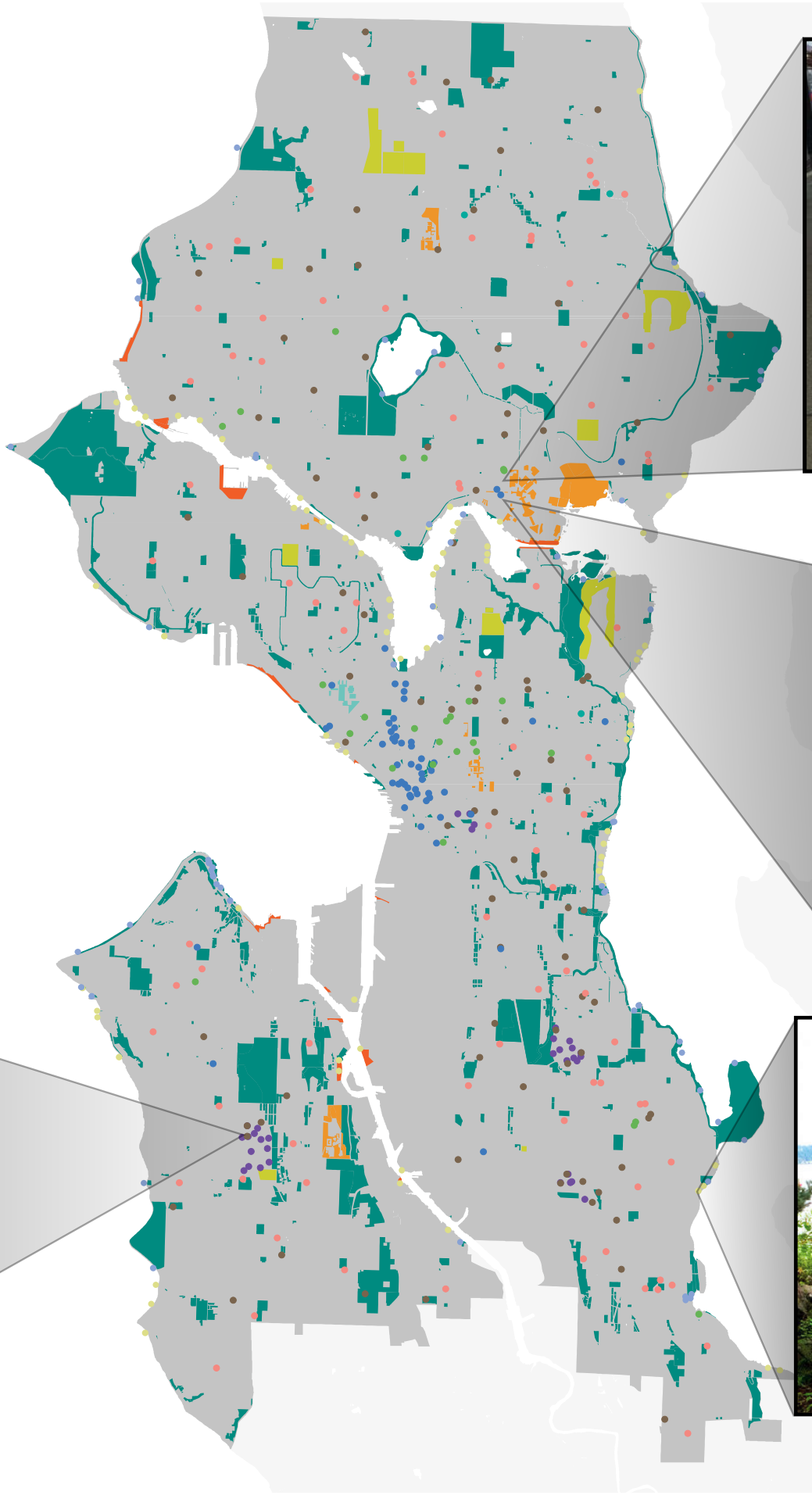
Olympic Sculpture Park

SEATTLE'S PUBLIC SPACE NETWORK

- Seattle Parks and Recreation
- Seattle Center
- Port of Seattle and Army Corps of Engineers parks
- SPU public space
- Seattle Housing Authority parks
- Public schoolyards
- Campus green spaces
- Cemeteries and private golf courses
- P-Patches
- Shoreline street ends
- Boat launches and ramps
- Privately Owned Public Space (POPS)
- Parklets + Streateries



High Point P-Patch



Parklet on the Ave



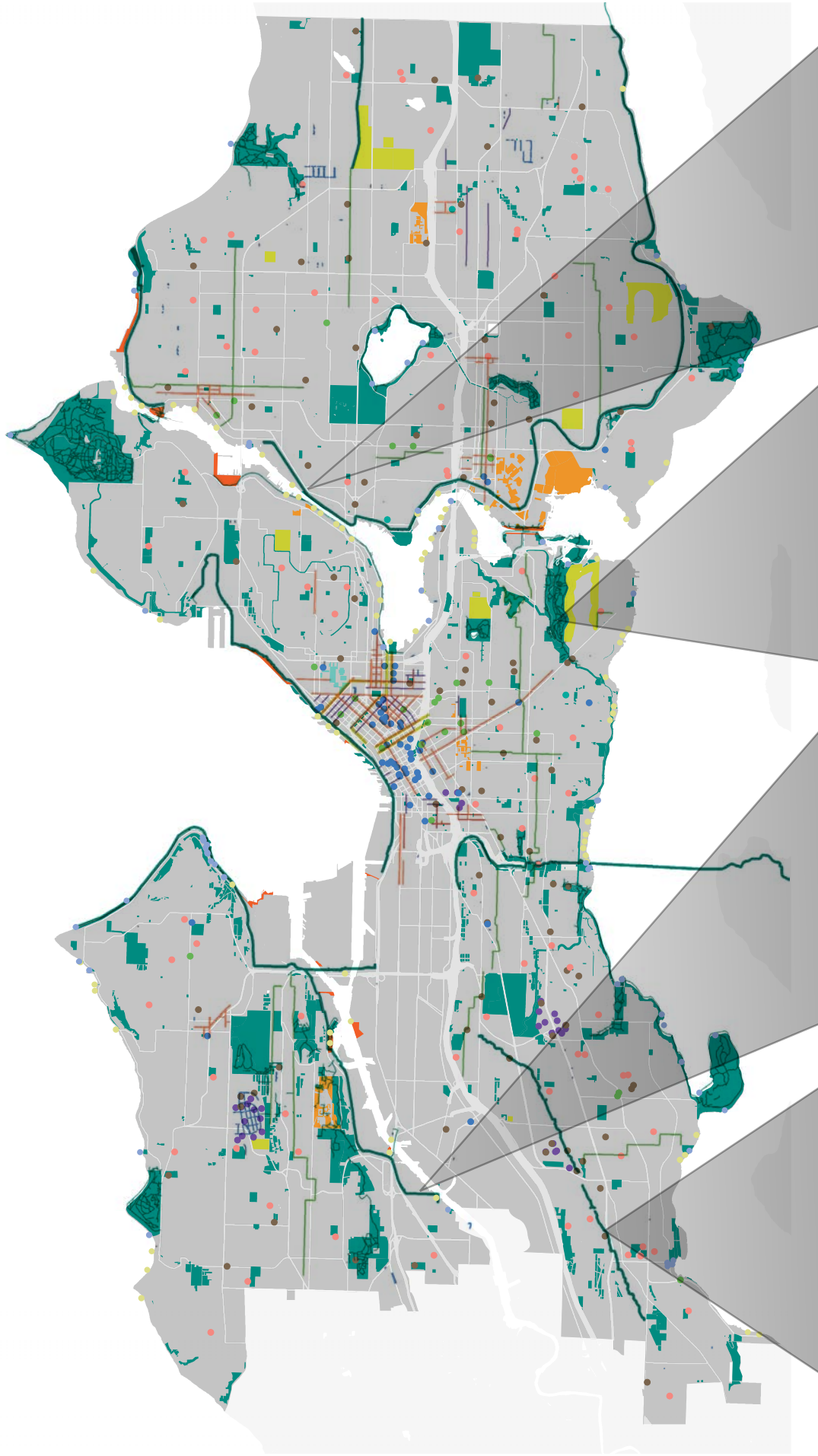
Alder Hall, UW



South Willow Street and 56th Ave South

SEATTLE'S PUBLIC SPACE NETWORK

- Seattle Parks and Recreation
- Seattle Center
- Port of Seattle and Army Corps of Engineers parks
- SPU public space
- Seattle Housing Authority parks
- Public schoolyards
- Campus green spaces
- Cemeteries and private golf courses
- P-Patches
- Shoreline street ends
- Boat launches and ramps
- Privately Owned Public Space (POPS)
- Parklets, Streateries and Pavement to Parks
- Regional Trail
- Local Trail



Burke Gilman



Arboretum Trail



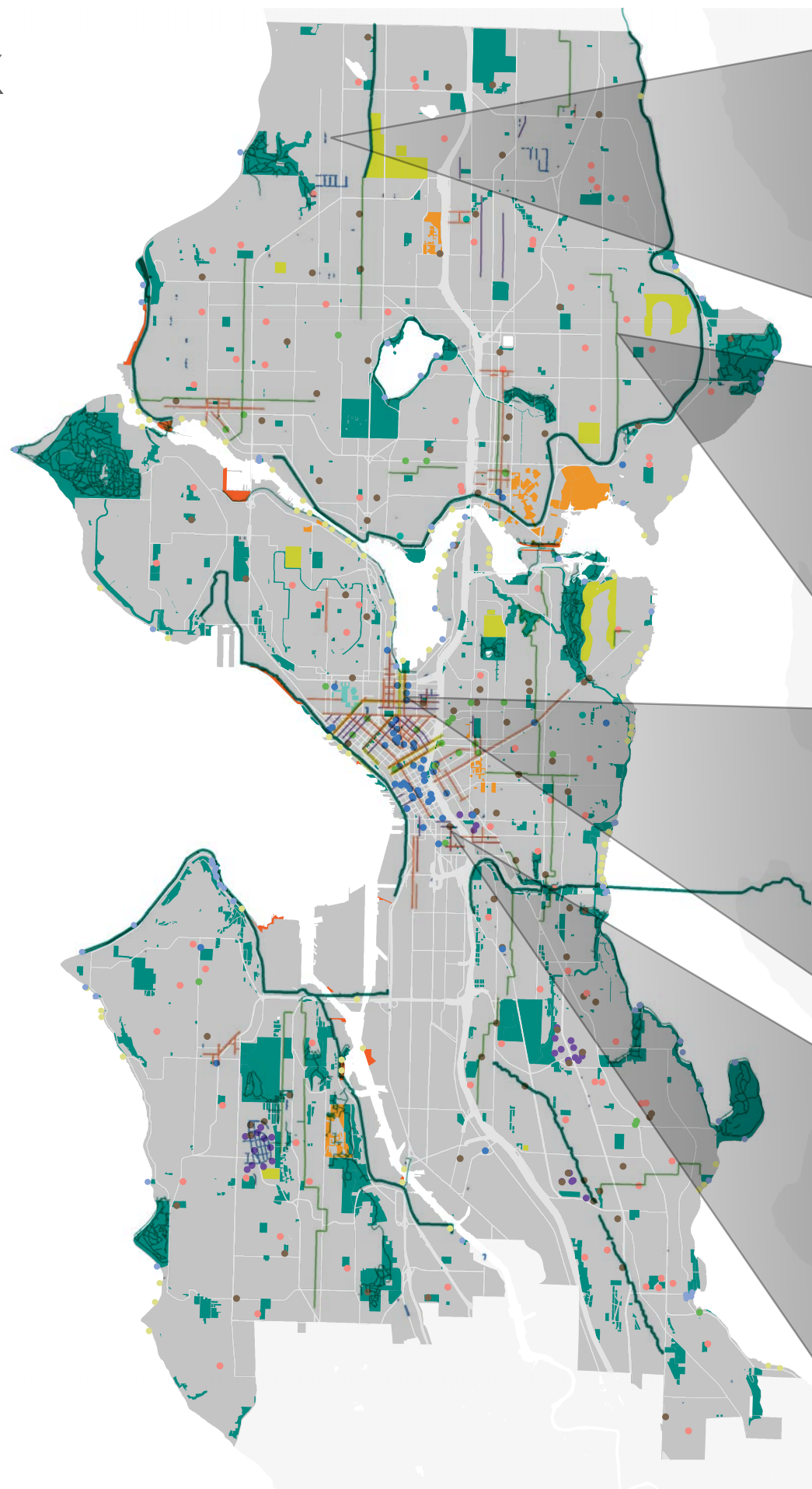
Duwamish Trail



Cheif Sealth Trail

SEATTLE'S PUBLIC SPACE NETWORK

- Seattle Parks and Recreation
- Seattle Center
- Port of Seattle and Army Corps of Engineers parks
- SPU public space
- Seattle Housing Authority parks
- Public schoolyards
- Campus green spaces
- Cemeteries and private golf courses
- P-Patches
- Shoreline street ends
- Boat launches and ramps
- Privately Owned Public Space (POPS)
- Parklets, Streateries and Pavement to Parks
- Regional Trail
- Local Trail
- Green stormwater infrastructure in the right of way
- Neighborhood Greenway
- Green Street
- Streetscape Concept Plan
- Urban Marked Trail
- Other ROW



SEA Street



Neighborhood Greenway



Terry Steetscape Concept Plan



Maynard Green Street

PUBLIC LAND IN SEATTLE

In total, 38% of the city is publicly-owned or publicly-accessible.



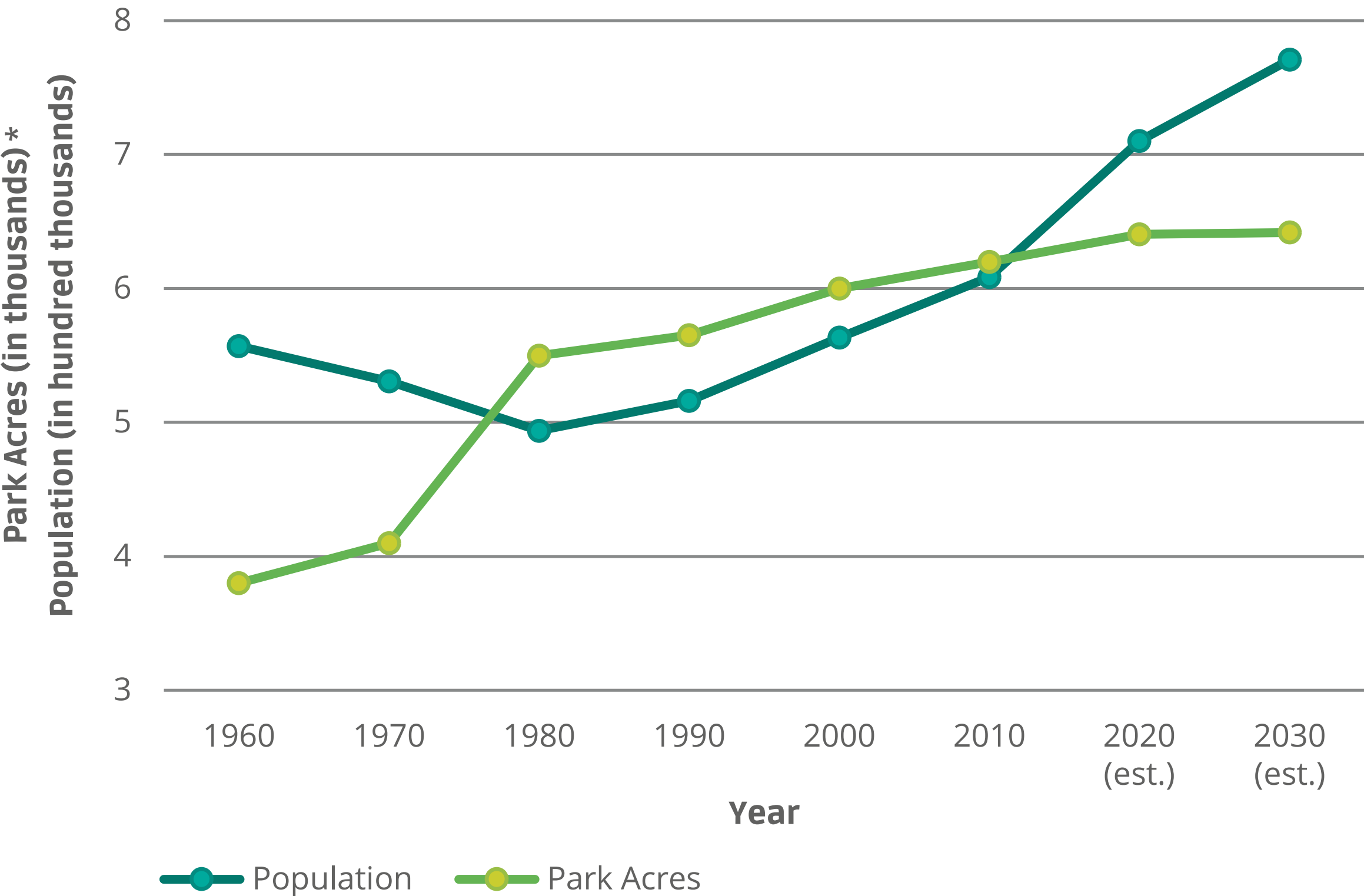
9% is part of Seattle Parks and Recreation.

3% is other types of parks and public space.

26% of Seattle is right of way.

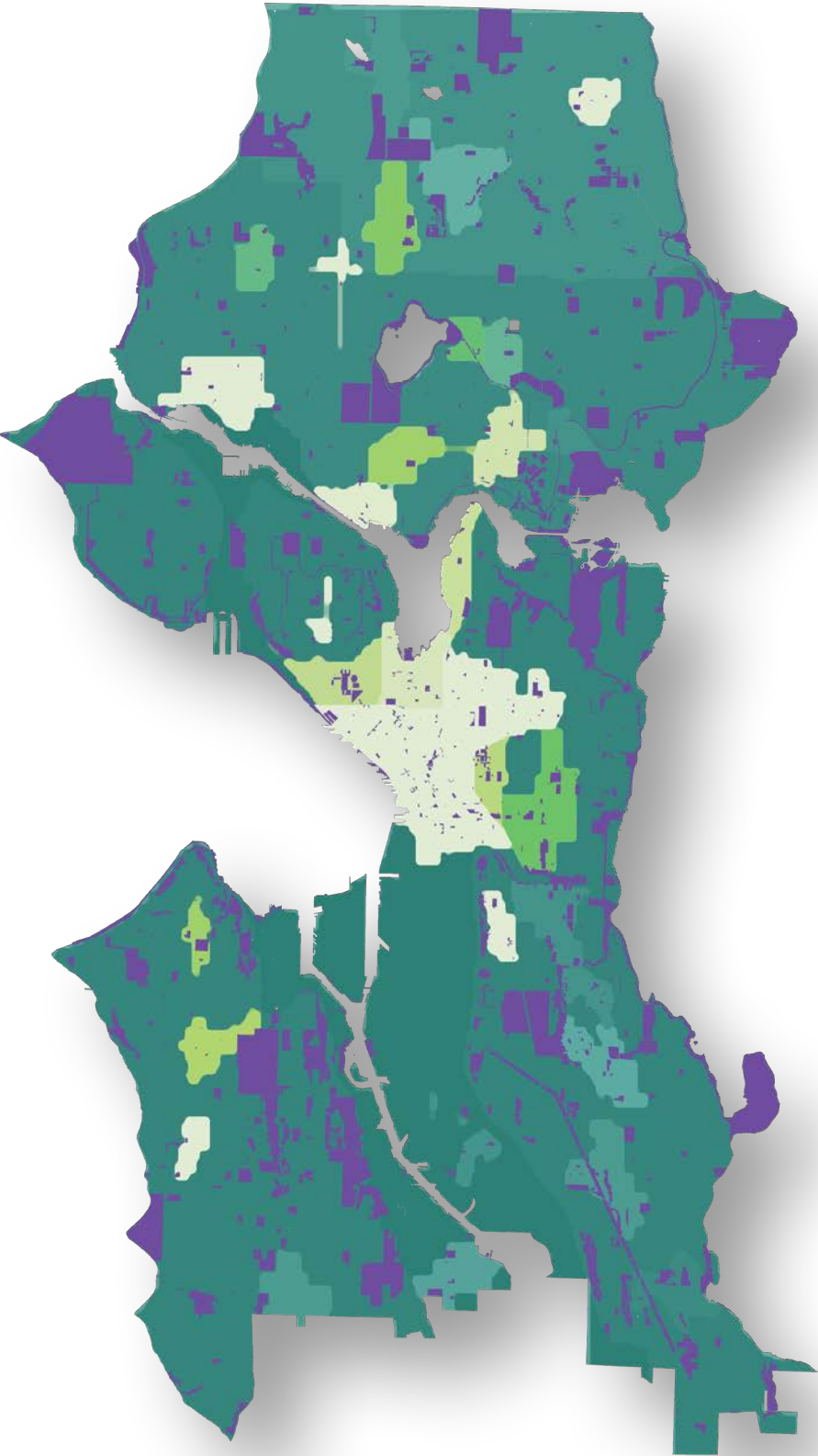
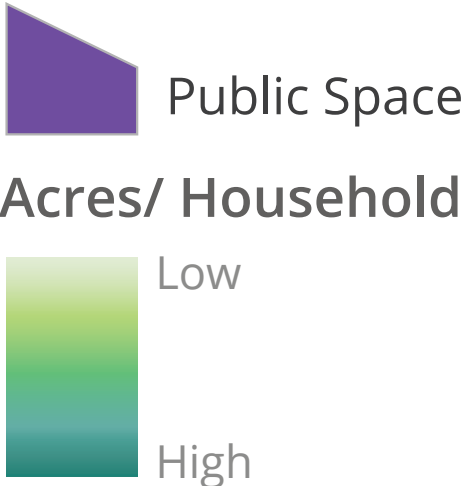
Our population is expanding much faster than our park system.

Park System & Population Growth Since 1960



* The current adopted SPR level of service is 8 acres per 1000 people.

Acres of Public Space Per 1000 Households	
In Urban Villages	3.2
Outside Urban Villages	28.9



Public Space Acres Per Household

We can expand public space by expanding our thinking.



The Vision:



Create
Expand
Repurpose



Stack benefits
Activate
Integrate

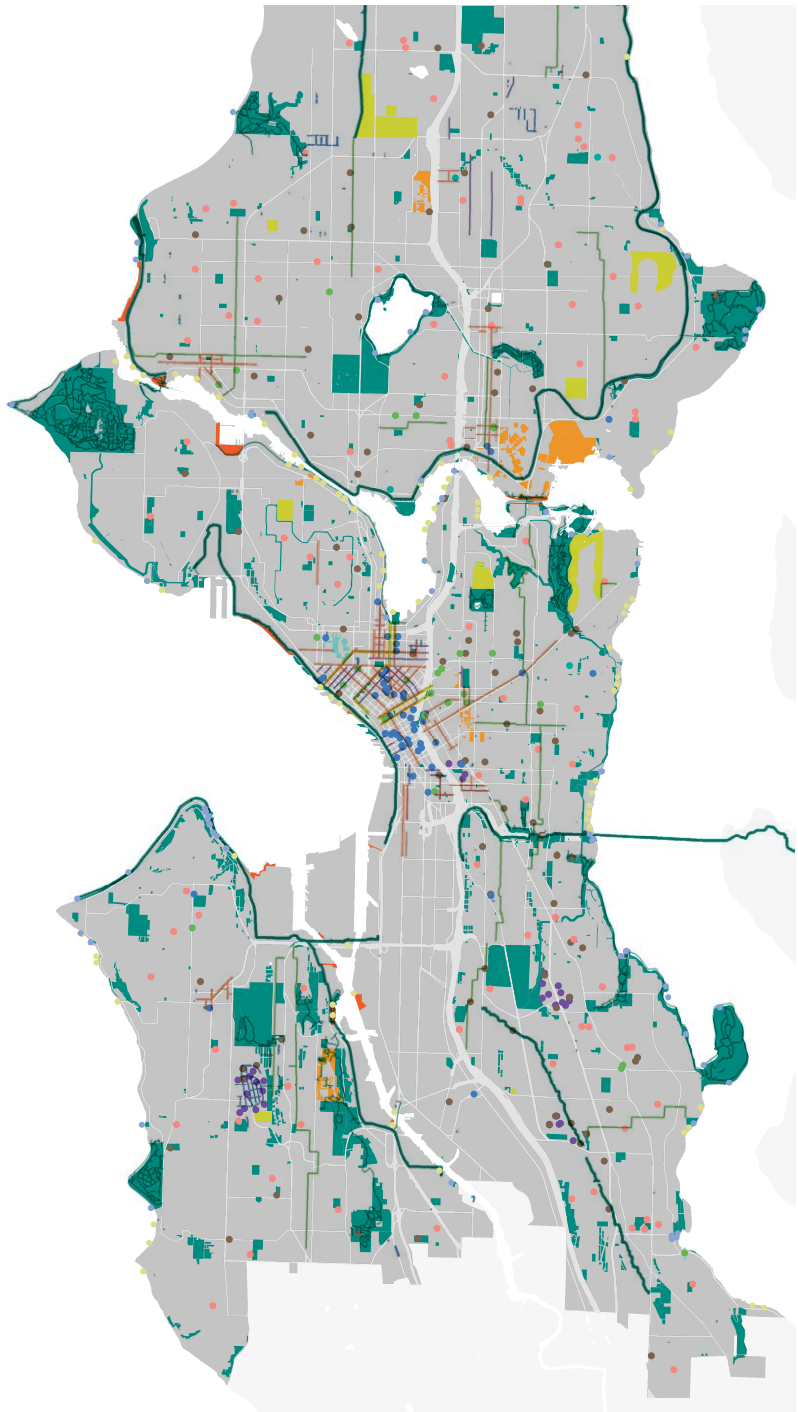


Invite
Stitch together
Relate

Seattle's public space network is robust and diverse...

SEATTLE'S PUBLIC SPACE NETWORK

- Seattle Parks and Recreation
- Seattle Center
- Port of Seattle and Army Corps of Engineers parks
- SPU public space
- Seattle Housing Authority parks
- Public schoolyards
- Campus green spaces
- Cemeteries and private golf courses
- P-Patches
- Shoreline street ends
- Boat launches and ramps
- Privately Owned Public Space (POPS)
- Parklets, Streateries and Pavement to Parks
- Green stormwater infrastructure in the right of way
- Regional Trail
- Local Trail (at least 1 mile long)
- Neighborhood Greenway
- Green Street
- Streetscape Concept Plan
- Urban Marked Trail
- Other ROW



But it is also:

1. Inequitably distributed

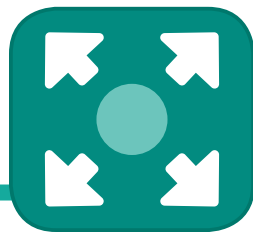


2. Not being used to its fullest potential



3. Fragmented





GROW

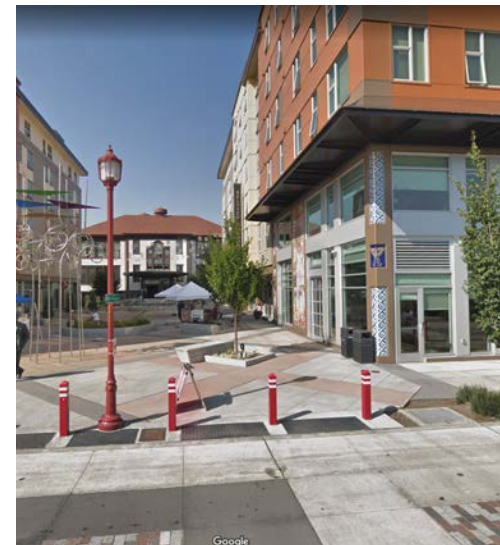
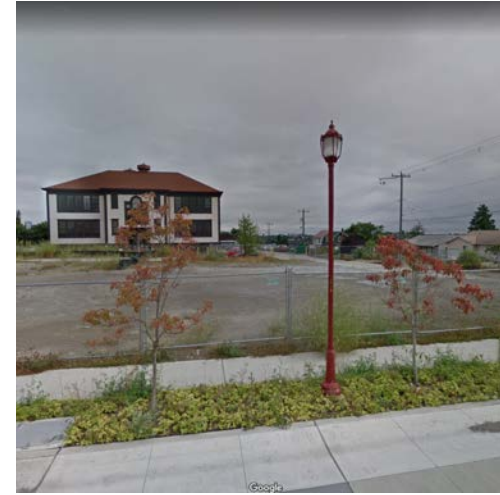
PROBLEM



Distributional Inequity

Some neighborhoods have an abundance of beautiful and well-maintained public spaces, while other neighborhoods have are in need.

STRATEGIES



Create new public space in underserved and high need areas.



Expand existing spaces to enhance usability.



Repurpose right-of-way and other assets to create more public space.



IMPROVE

PROBLEM



Underutilized space

Many public spaces in Seattle are not living up to their full potential due to a lack of investment, maintenance, or activation.

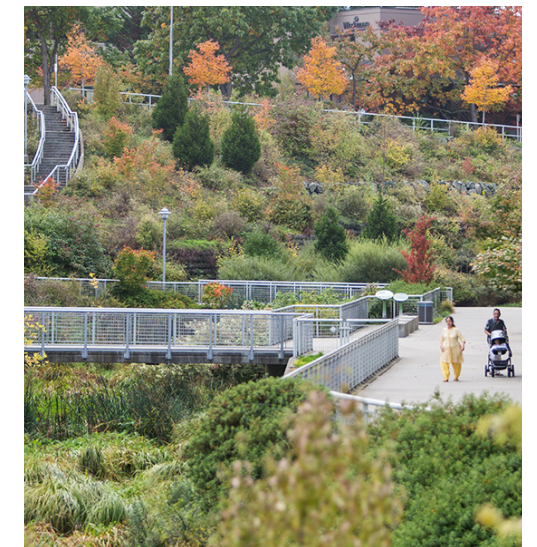
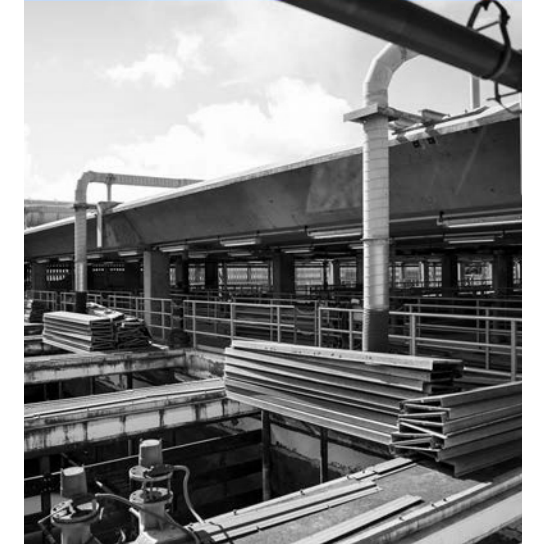
STRATEGIES



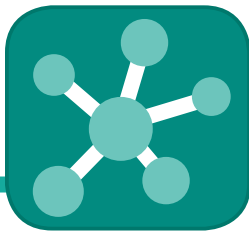
Stack benefits to get more out of underutilized space.



Activate and bring new life to existing public space.



Integrate infrastructure and public space.



PROBLEM



Fragmentation

Siloed planning and delivery of public space across departments and agencies has led to a network can feel disjointed and hard to navigate.

STRATEGIES



Invite people outside through safe, green trails and streets.



Stitch together habitat corridors, trail systems, open space, and shorelines.

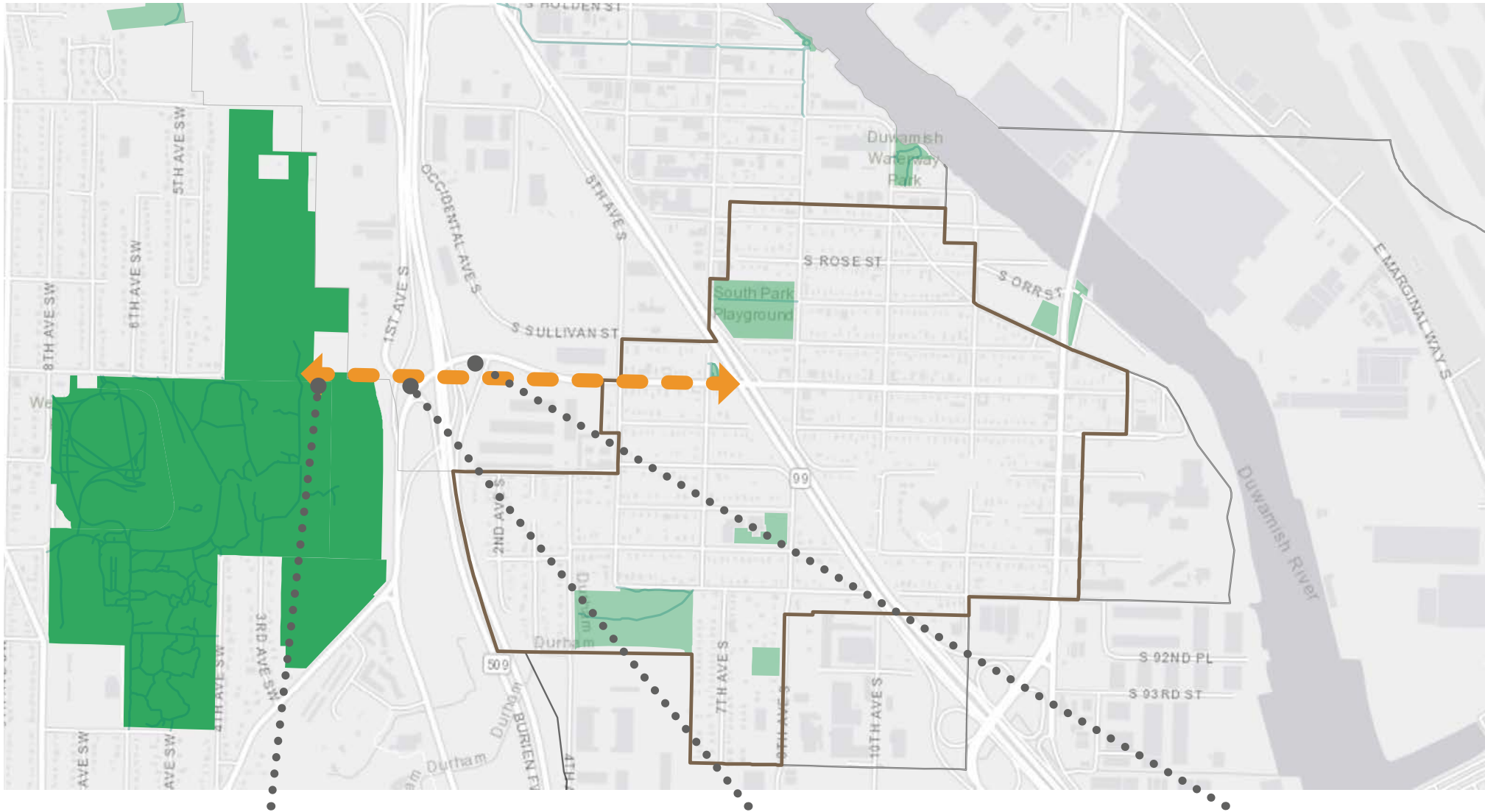


Relate public spaces to community needs through culturally-informed design and programming.

WESTCREST PARK EXAMPLE



WESTCREST PARK EXAMPLE



Mapping Shared Priorities for Public Space Equity

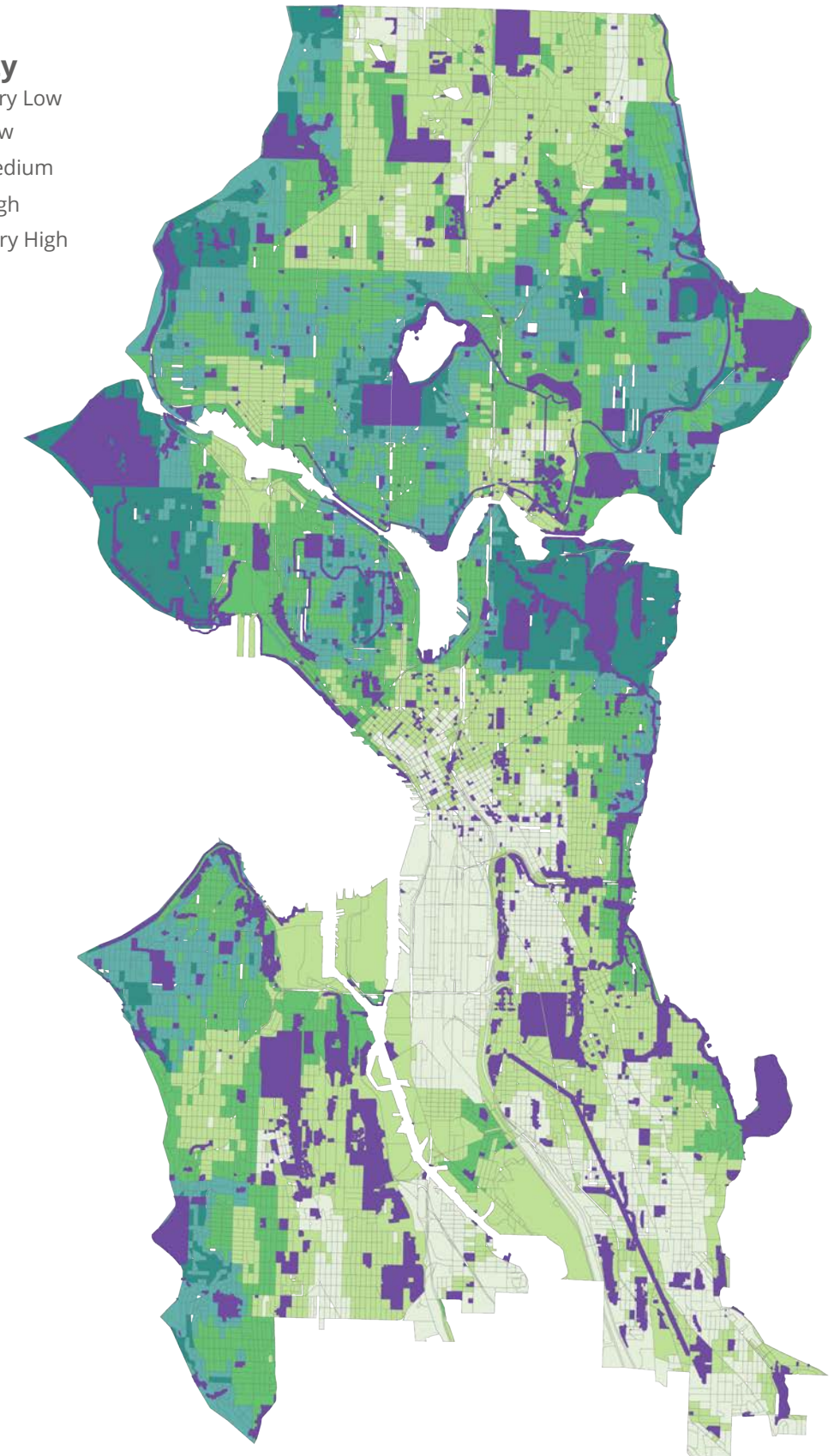


Public Space Equity Mapping

- The Outside Citywide Public Space Equity Map **identifies priority areas for new public space investments** based on lack of access to existing public space and equity considerations

Priority

Very Low
Low
Medium
High
Very High



Project Goals

- **Create a more equitable city** by focusing new investments in neighborhoods with the highest needs.
- Develop shared priorities across departments and with external partners that **improve opportunities for collaboration.**

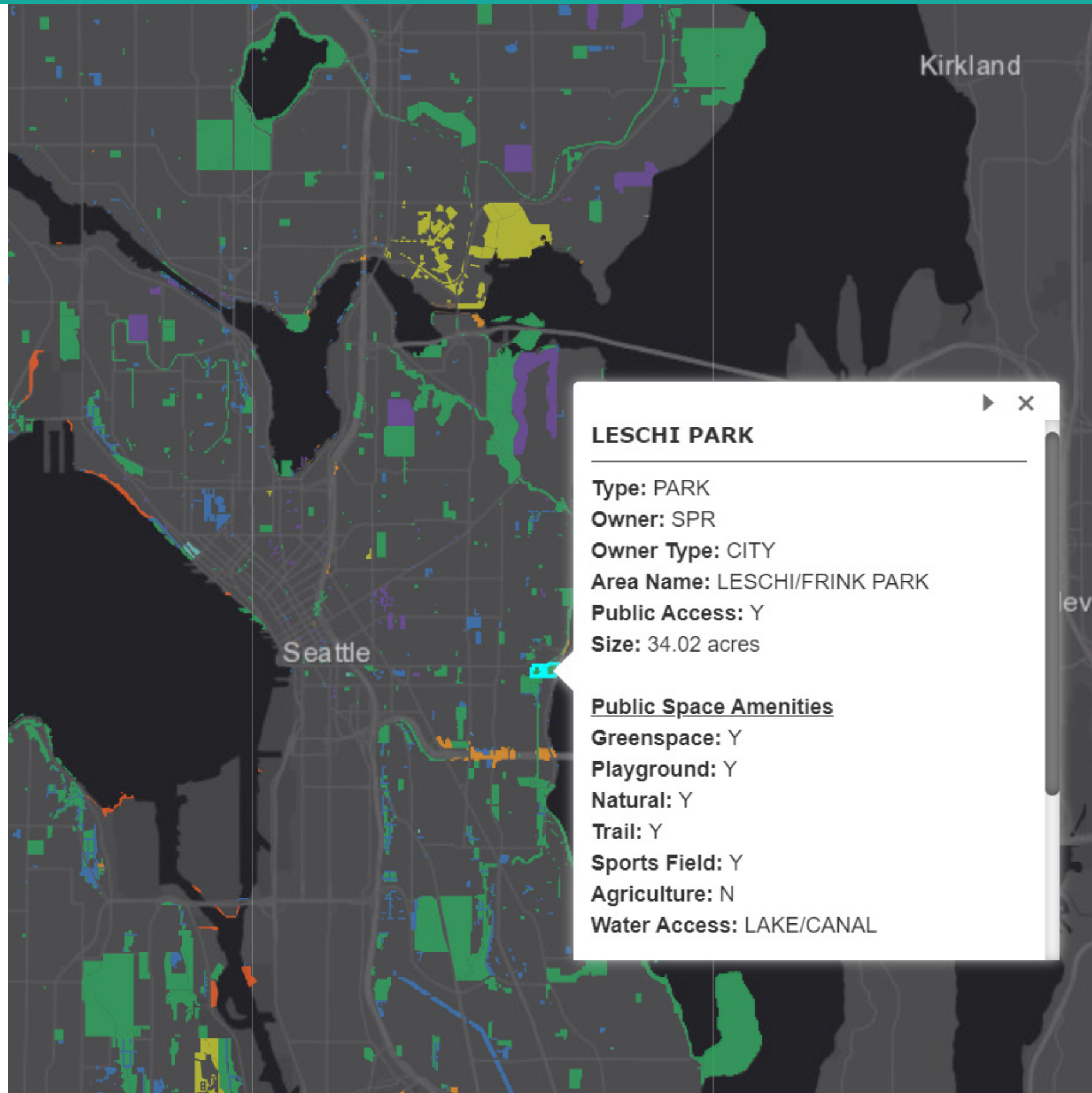


Project Components



1. Public Space Data

- Maps **all public and open spaces in Seattle** regardless of ownership. (Parks, cemeteries, P-Patches, campuses, etc).
- Includes **data on public space features**, characteristics and amenities.
- This data is the **backbone of the public space equity analysis**.



Public Space Data Overview

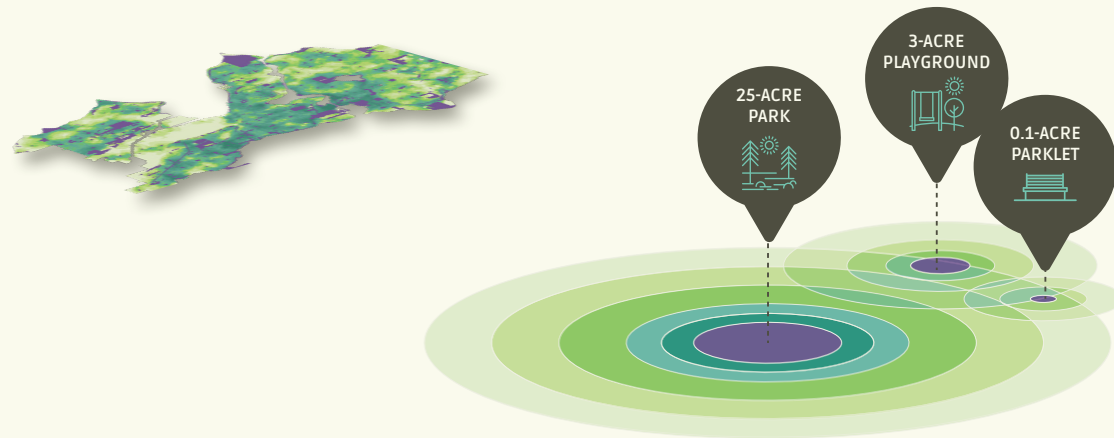
Owner	Count*	Acres*
SPR	529	4,951
Private (Cemeteries, Golf Courses, POPS, etc)	86	571
Campus (UW, SSC, NSC, SU)	61	346
Seattle Public School	105	303
SDOT	259	246
SPU	29	116
SCL	4	88
Other Gov't (WSDOT, DNR, Fed, County, Sound Transit)	42	86
Port of Seattle	14	75
SHA	41	44
CoS (FAS, DON, SCL)	24	30
NPO/ Church	16	11
TOTAL	1,210	6,868

**Based on current analysis. Includes land-based public and open space for human and environmental use.*

2. Public Space Access Analysis

- Measures **where there is better and worse access** to our current public space system.
- Based on several analysis layers that each look at different key factors such as the size, variety, walking distances, and amenities of public spaces.

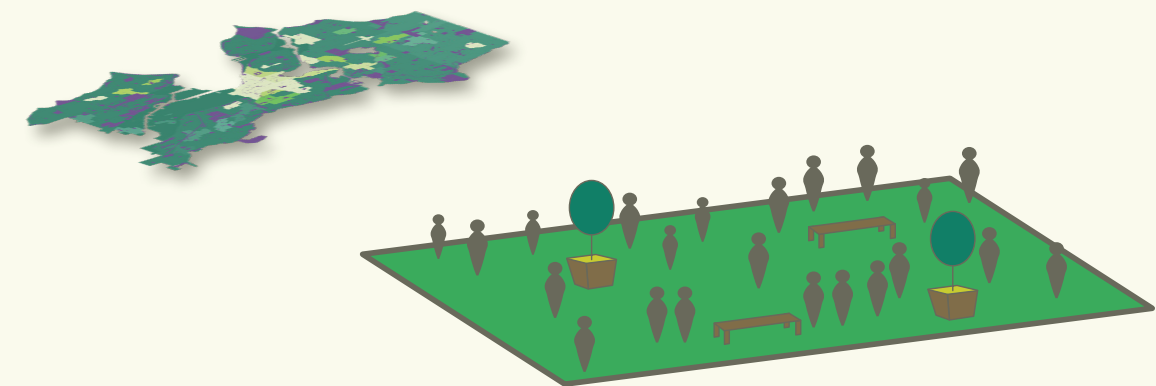
1. Size, Characteristics, + Variety of Spaces



2. Access to Amenities



3. Population Load



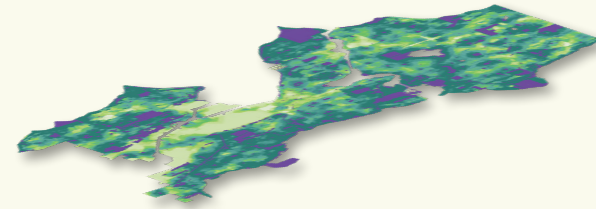
4. Private Open Space



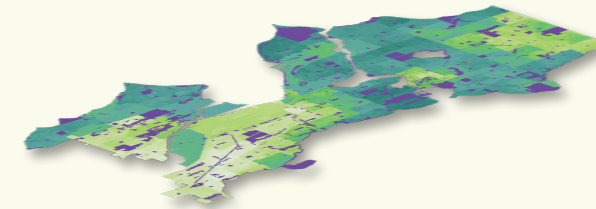
3. Priority Analysis

- Identifies **which areas of the city are most in need of public space investments**
- Factors in race and social equity, health outcomes, and growth and density as well as access to move toward public space equity

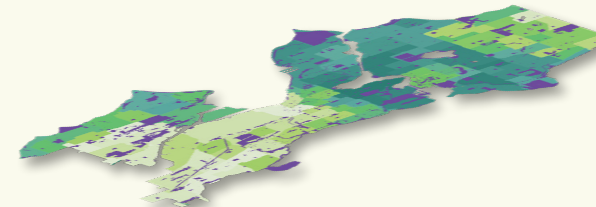
Access to Public Space



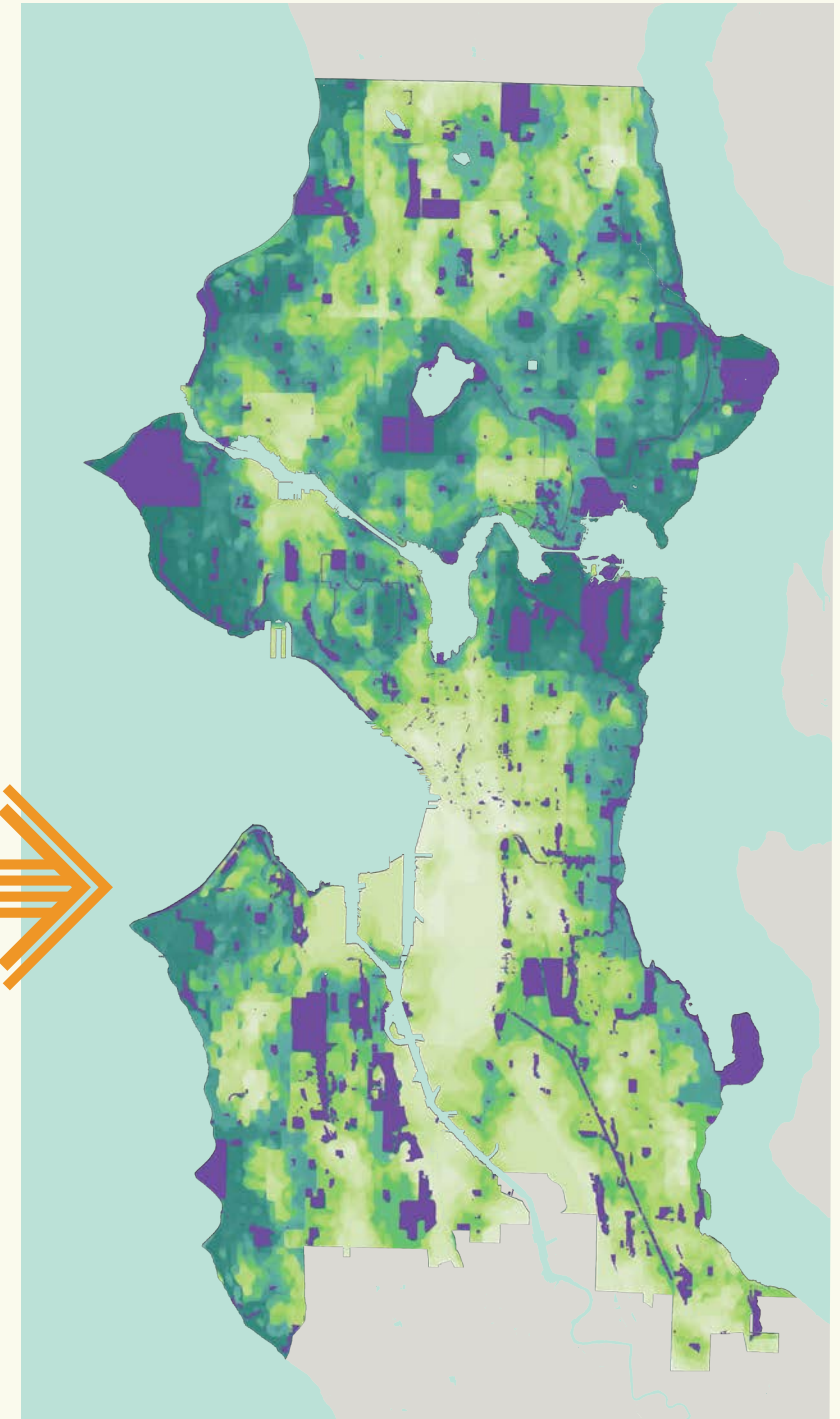
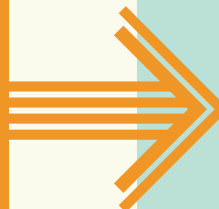
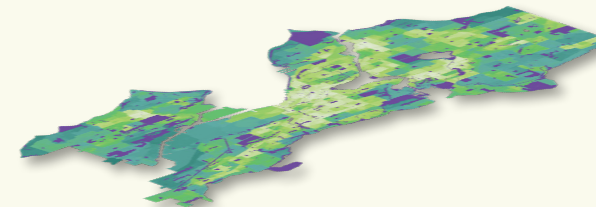
Race + Social Equity



Health Outcomes

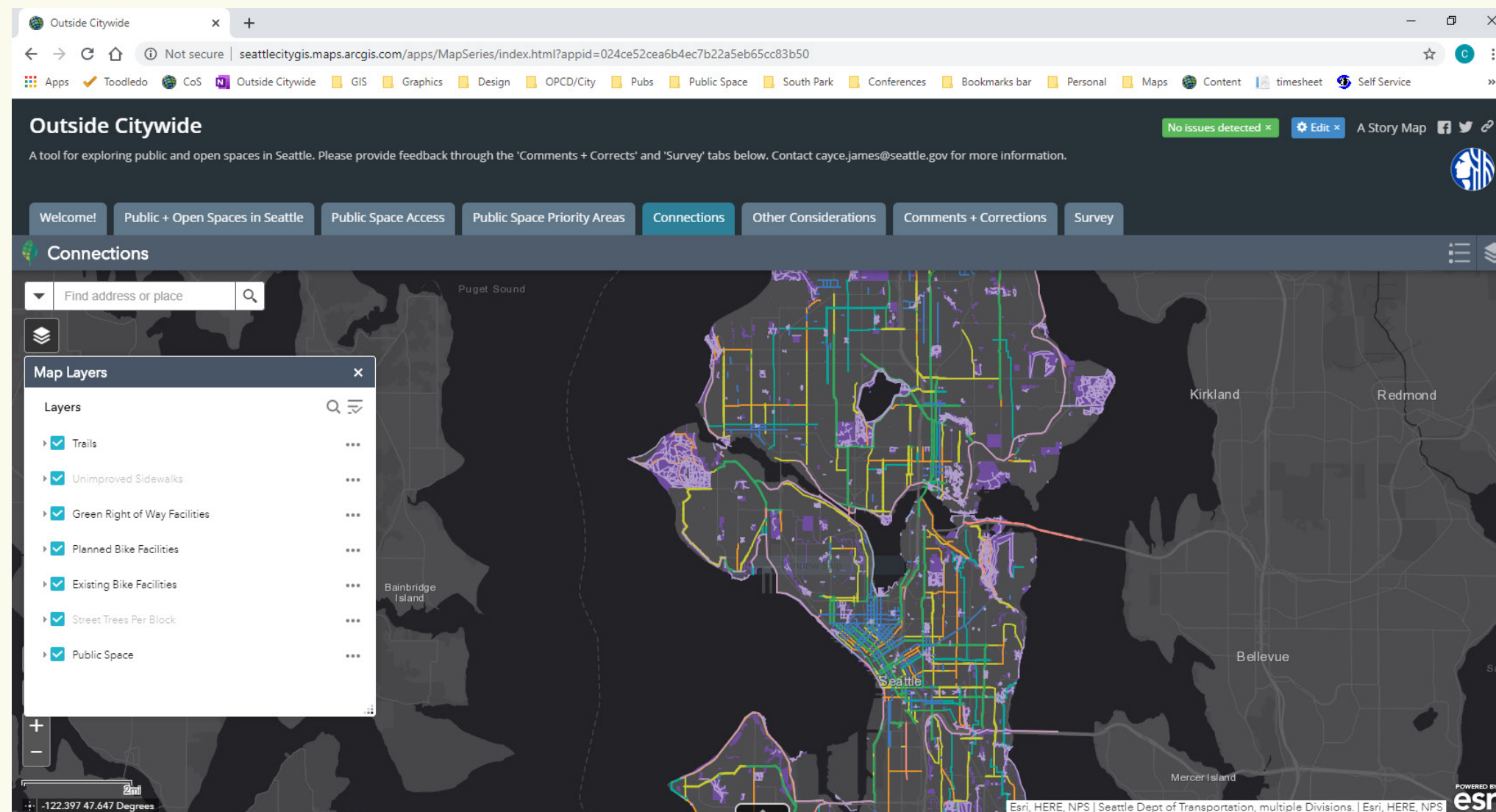


Growth + Density



4. Web Tool

- Allows users to explore the data and analyses
- Currently oriented toward planners, but **will become more public-facing** and accessible in revised version



Applications



Examples of Current or Potential Uses of this Resource

SPR

- Park District Plan
- COVID-related CIP reductions
- Major Projects Challenge Fund
- Asset Management Plan
- Programming
- Community center operating hours
- NMF and YVYC

OPCD

- Comprehensive Plan
- Equitable Development Initiative
- Community Planning
- Imagine Greater Downtown
- ST3 Station Area Planning

SPU

- Site selection for GSI, floodplain reconnection, and flood resilience projects
- Landscape Asset Management Plan
- Delridge Natural Drainage

SDOT

- Seattle Together Streets
- Shoreline Street End improvements
- Parklets
- Sidewalk improvements

OH

- Programming decisions for public space amenities
- Attracting funding from other sources for public space

OSE

- Environmental Justice Fund
- King Conservation District Grants
- Urban forestry program
- Food Action Plan
- Environmental Justice Committee recommendations

DON

- Neighborhood Matching Fund
- P-Patch Program
- School playground retrofits
- Bike Master Plan and Healthy Streets RET

External Partners

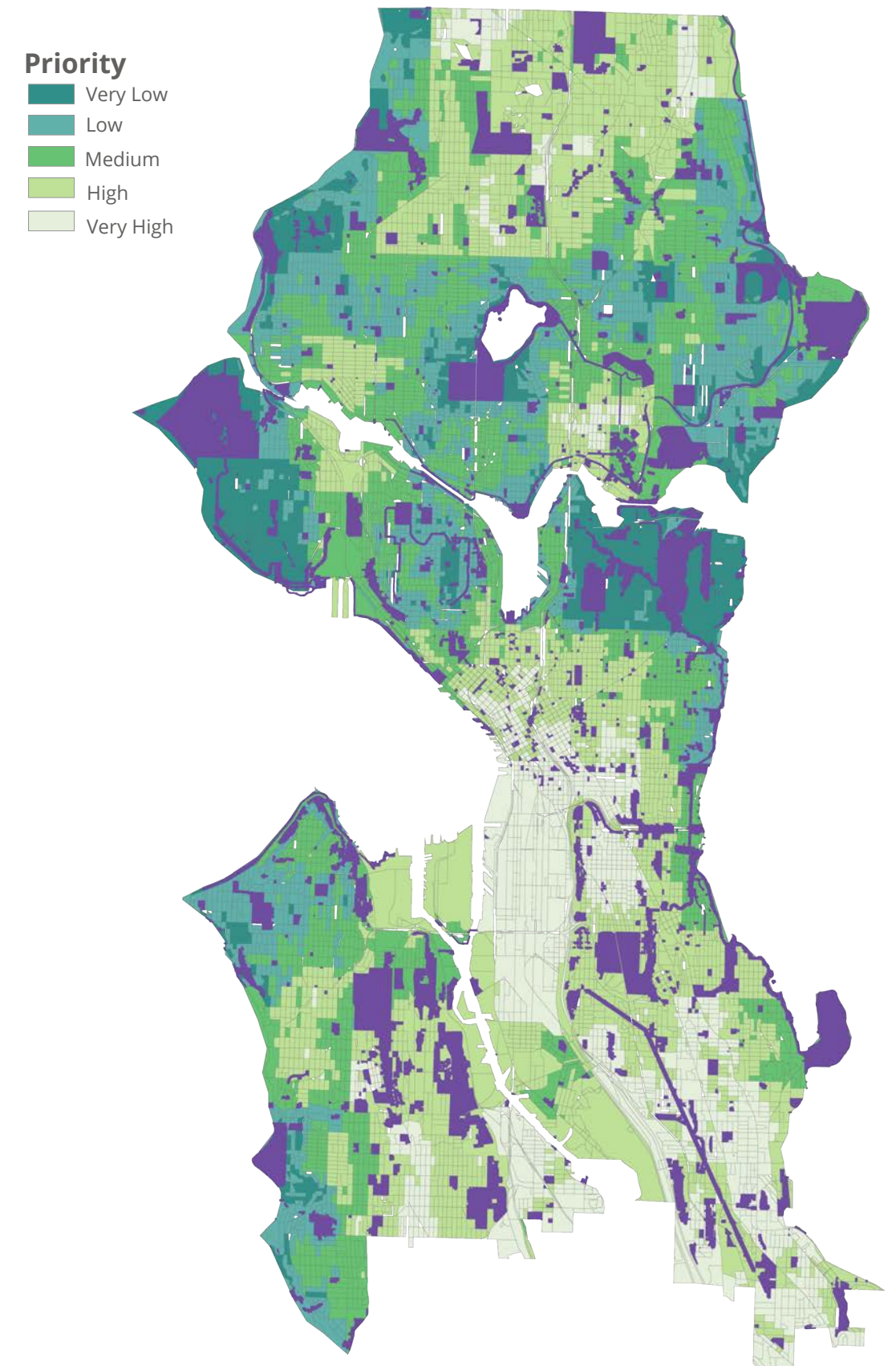
- Funding and resource allocation decisions

Current Updates



Improvements

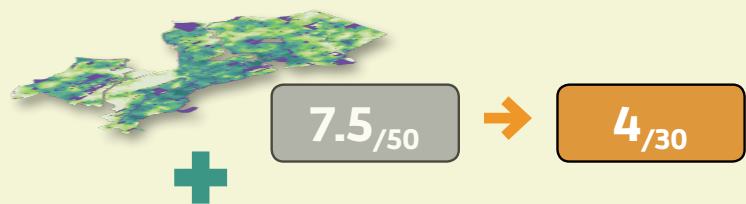
- **Increase weight for 'population load'** (acres per household) to address **social distancing** needs
- **Increase weight of 'Race and Social Equity'** layer to enhance equity focus
- **Decrease weight of 'Public Space Access'** layer to allow **for more flexibility** of use (recreational programs, activation efforts, etc)
- Apply analysis to **create five priority levels for census blocks**
- Create **simpler, compelling, publicly-accessible web tool**



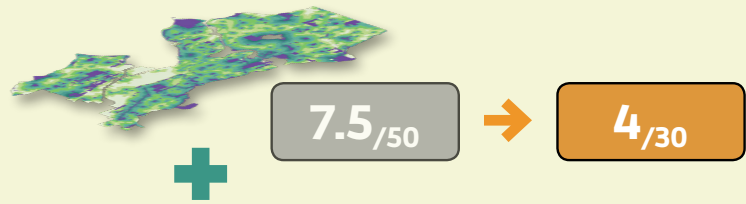
Weighting Recommendations

Public Space Access Analysis

Analysis 1: Variety of Spaces



Analysis 2: Largest Nearby Space



Analysis 3: Walking Distance



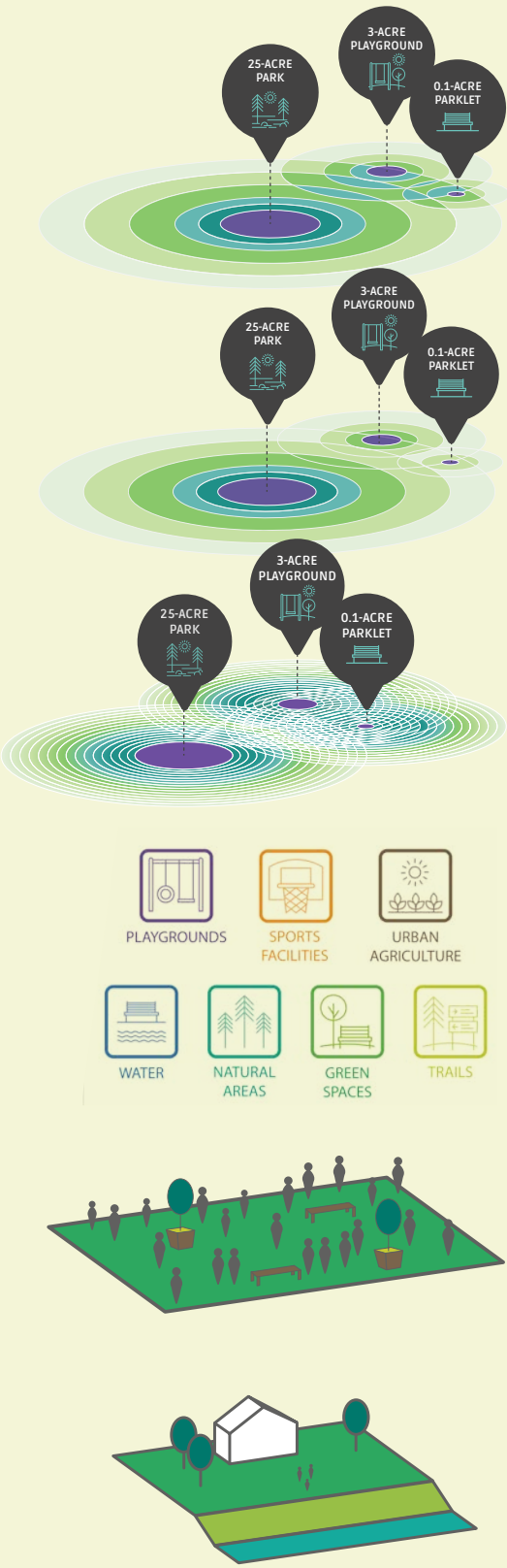
Analysis 4: Access to Amenities



Analysis 5: Population Load



Analysis 6: Private Open Space



LEGEND

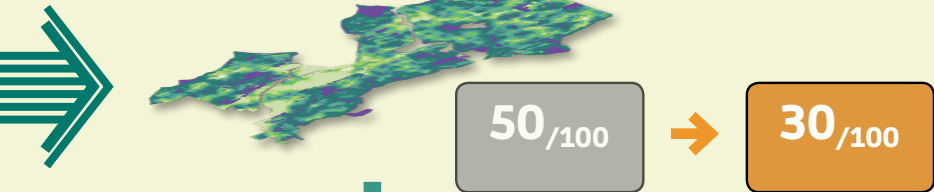
Old Weight



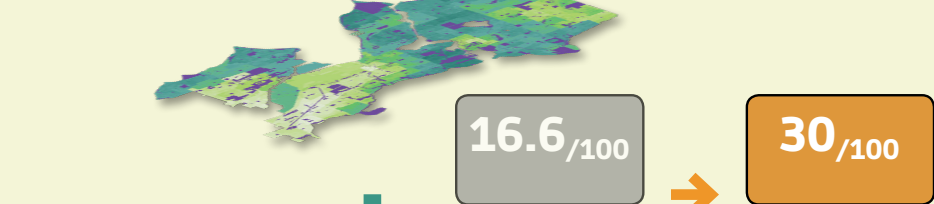
New Weight

Priority Analysis

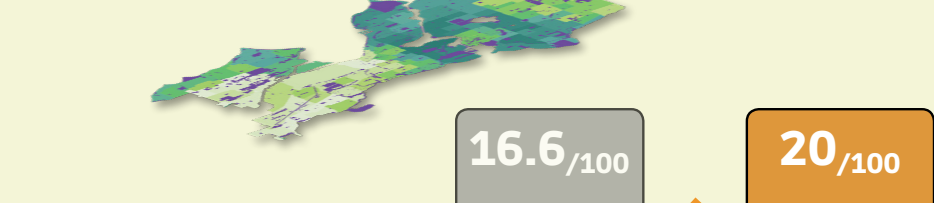
Access to Public Space



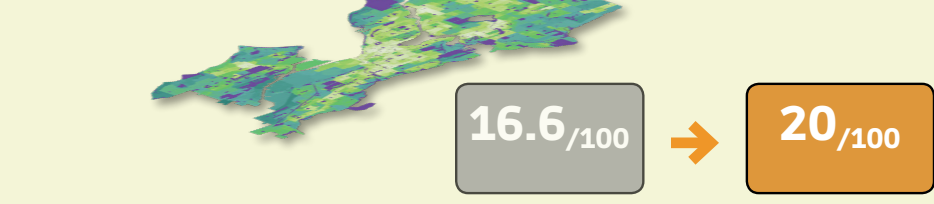
Race + Social Equity



Health Outcomes



Growth + Density



Public Space
Priority Map

Future Possibilities

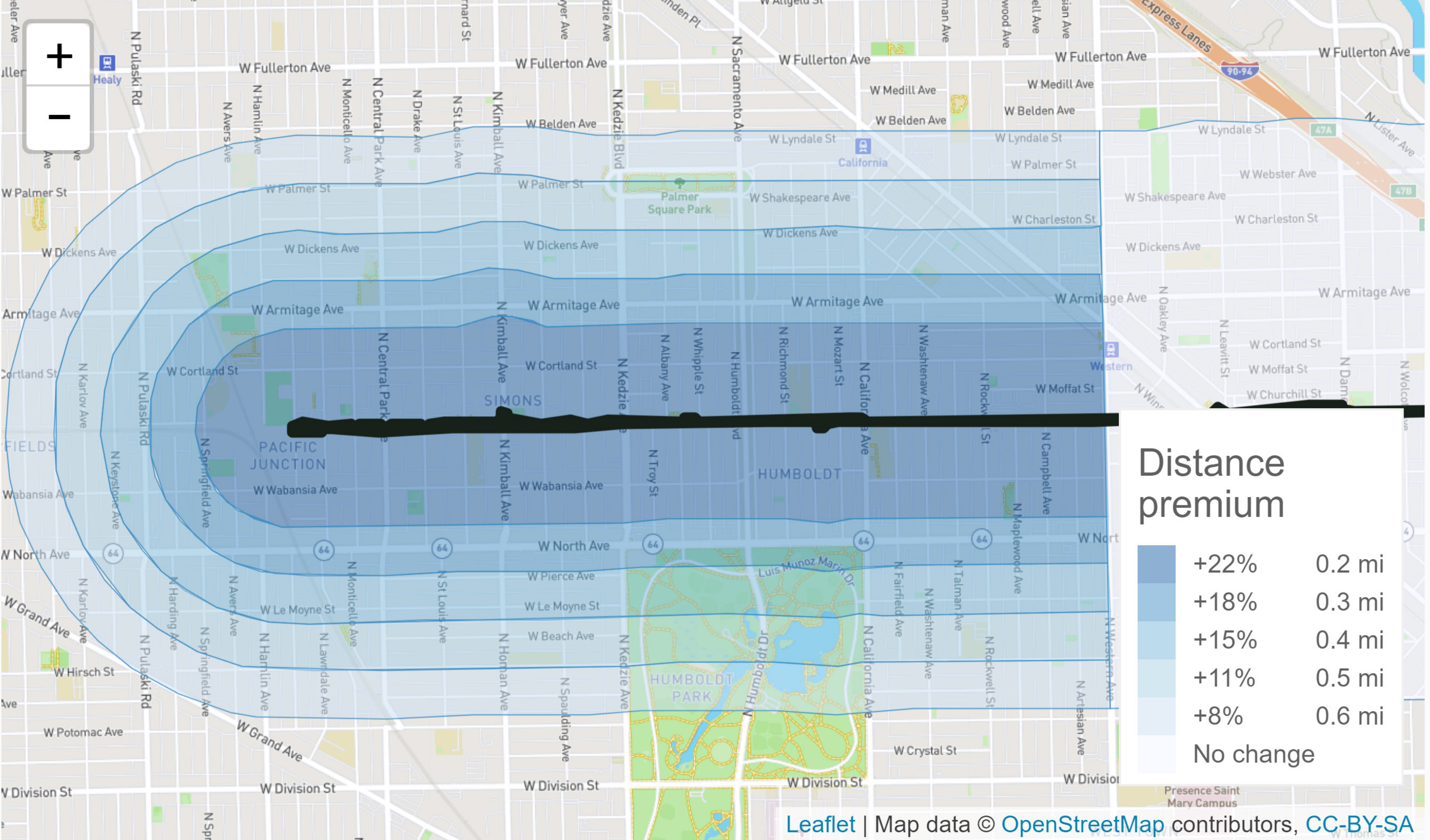
- Collect **data on public space quality**
 - Possible youth internship opportunity
 - Survey all (~800) public spaces to assess:
 - Overall quality
 - Amenity quality and popularity
 - User counts and profiles
 - Data errors
- Create a **complete trail map** and **pedestrian-centered network dataset**
 - Including all on- and off-street bike and ped improvements (trails through parks, green streets, Stay Healthy Streets, etc)
 - Could be used in **many** different analyses (ST3, Mayor's dashboard, etc)

Advancing Equitable Public Space Development Strategies









EQUITABLE DEVELOPMENT STRATEGIES

Green Career Pathways



Upstream Workforce Training



Small Business Support



Capacity Building



Narrative and Leadership



Community Co-Ownership





1640












GREEN
AMBASSADORS

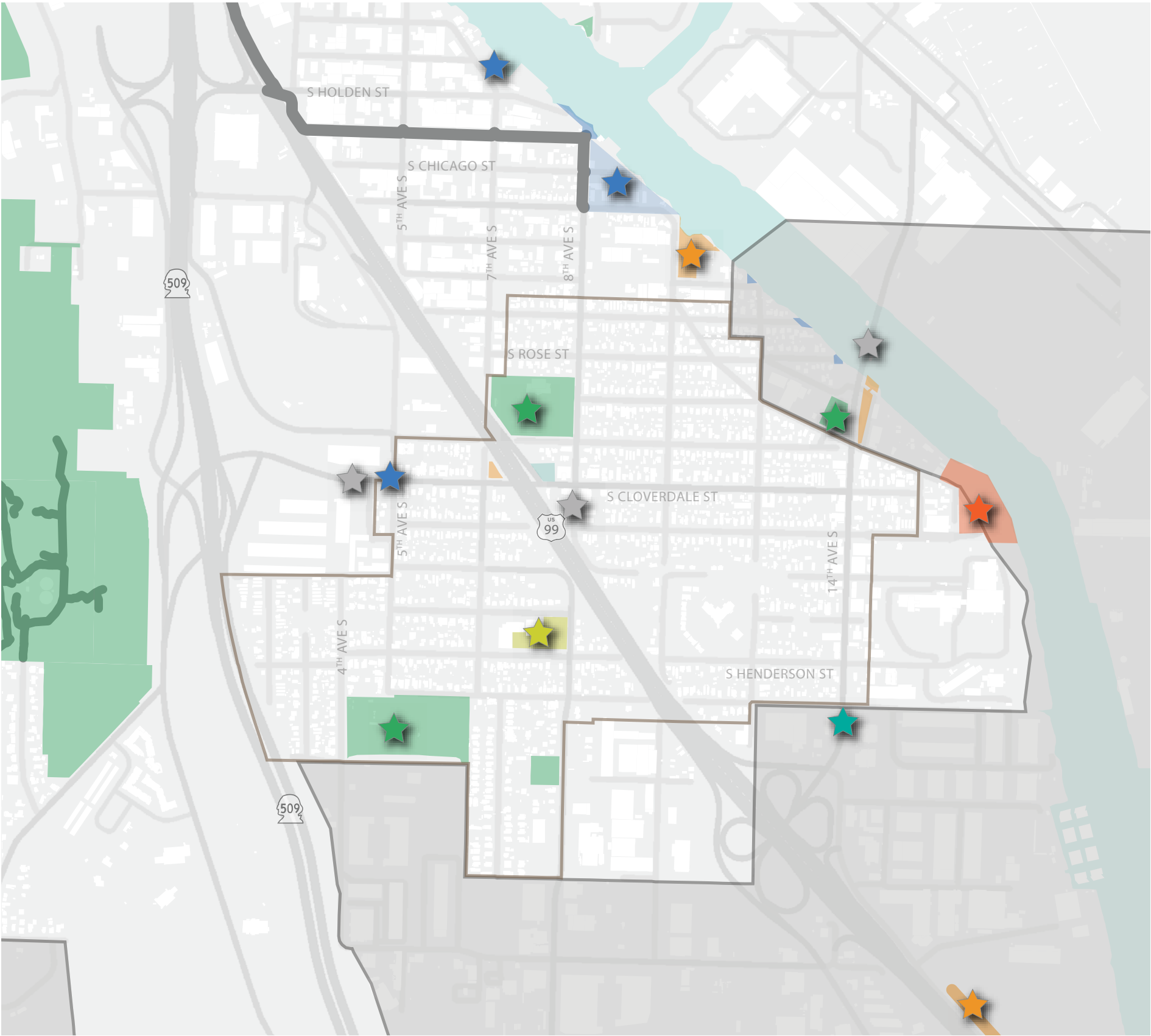


Applying Equitable Strategies in South Park






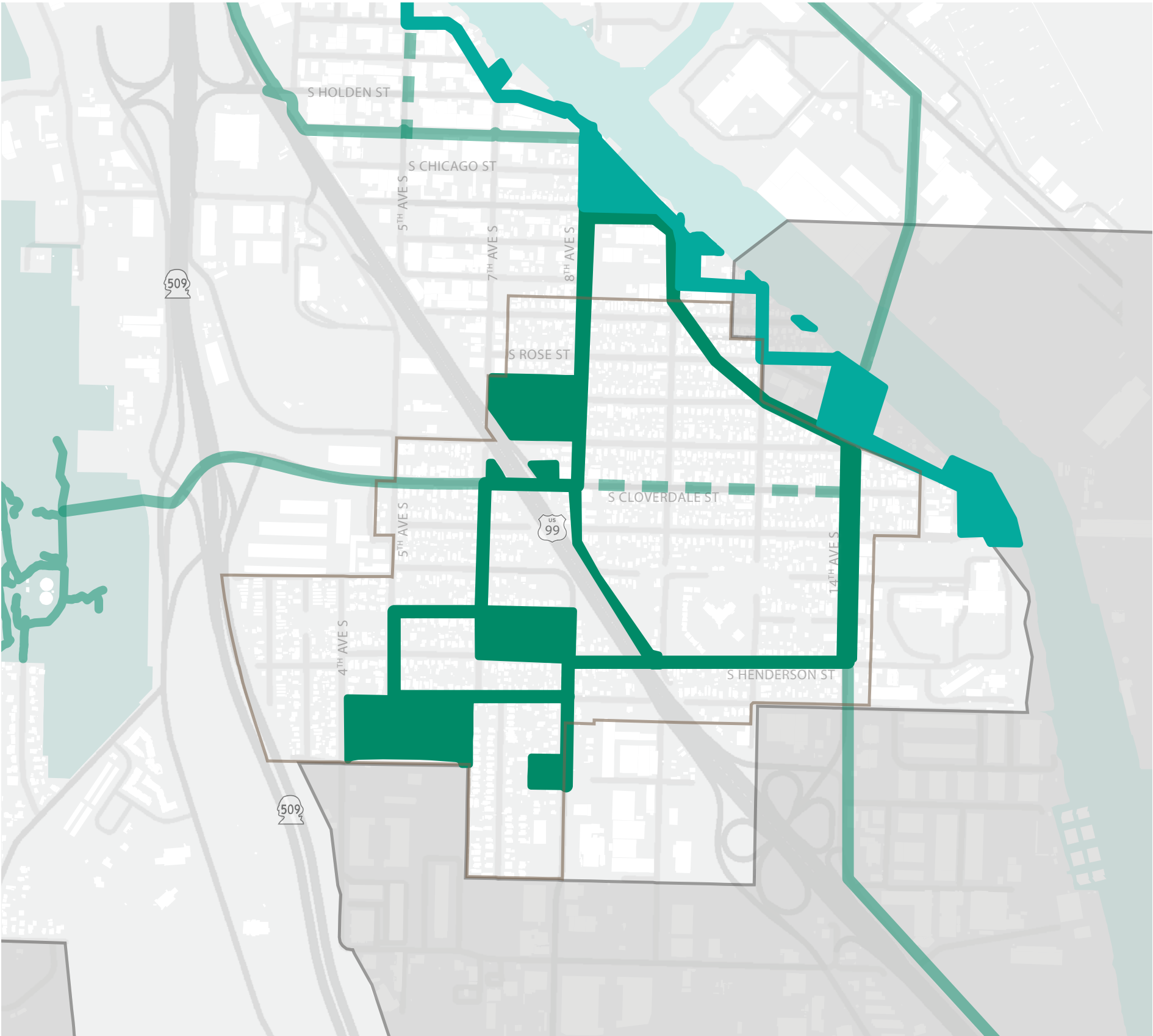
THE SOUTH PARK GREEN LOOP AND RIVERWALK

- | | | |
|--|---|---|
|  Seattle Parks and Recreation |  Public Schools + Institutions |  Non-Profit |
|  City of Seattle |  King County + WA State |  Port of Seattle |
|  SDOT |  Private Open Space |  Federal |



THE SOUTH PARK GREEN LOOP AND RIVERWALK

-  Green Loop
-  River Walk
-  Connection



IMAGINING THE FUTURE RIVERWALK



The “how” is just as important as the “what.”





FUTURE SOUTH PARK RIVERWALK



Thank you!

Contact

Cayce James

Office of Planning and Community Development

cayce.james@seattle.gov

206-256-5106

