

Georgetown Mobility Study



Seattle Pedestrian Advisory Board

Diane Wiatr

July 12, 2017



Seattle
Department of
Transportation

Our mission, vision, and core values

Mission: deliver a high-quality transportation system for Seattle

Vision: connected people, places, and products

Committed to **5 core values** to create a city that is:

- Safe
- Interconnected
- Affordable
- Vibrant
- Innovative

For **all**

Presentation overview

- Project overview
- Partners
- Outreach and Engagement
- Community Feedback
- Next steps



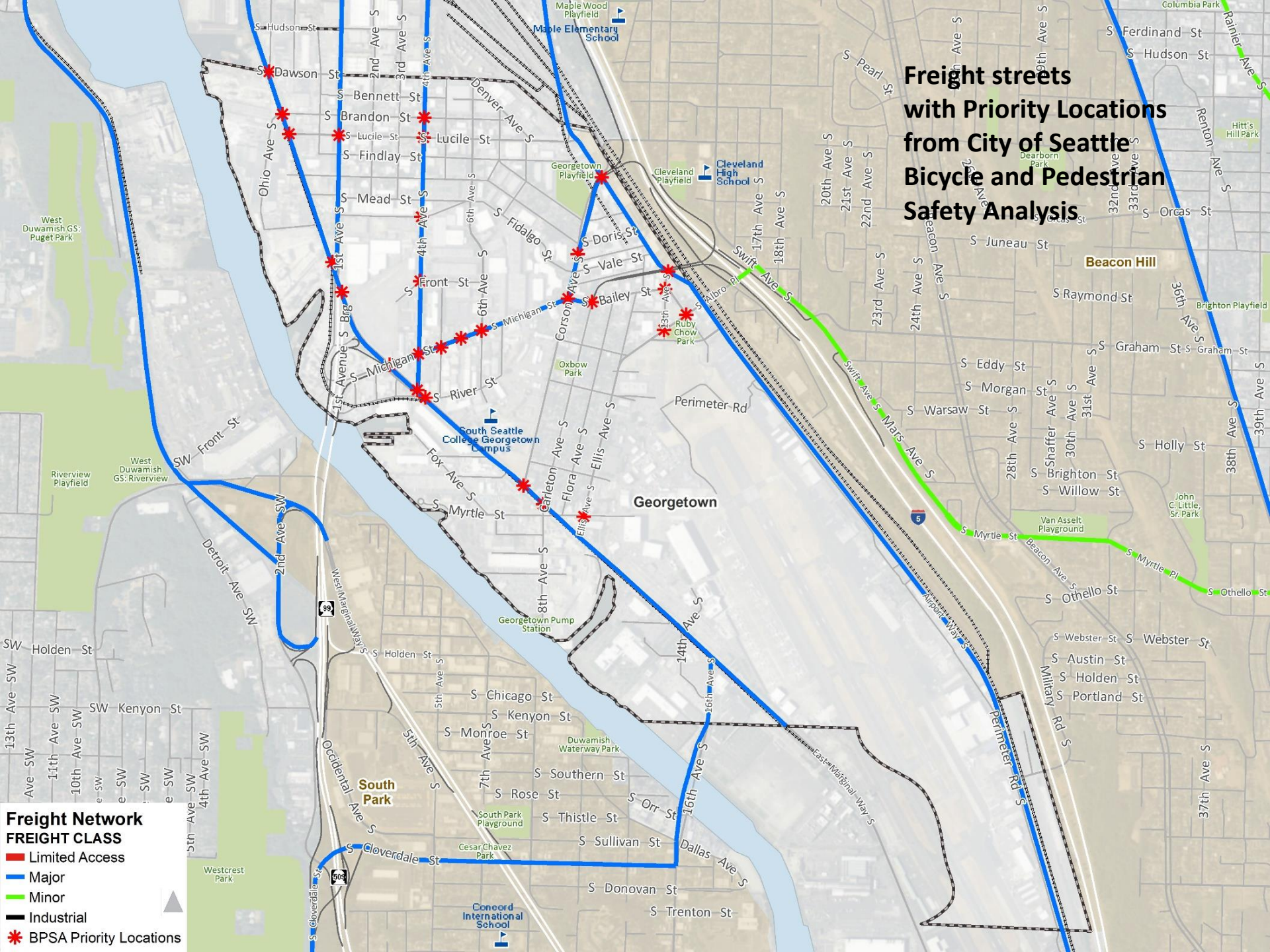
Project goals

- Safety
- Access
- Community health
- Mobility





Freight streets with Priority Locations from City of Seattle Bicycle and Pedestrian Safety Analysis



Freight Network
FREIGHT CLASS

- * Limited Access
- Major
- Minor
- Industrial
- * BPSA Priority Locations



Partners

- Sidewalk Assessment SDOT
- Seattle Parks Foundation – *Georgetown Open Space Vision*
- Safe Streets Duwamish
- Duwamish Action Team
- Georgetown Merchants Association
- Georgetown Community Council
- MIC (Manufacturing Industrial Council)
- UW Health Impact Assessment
- Bicycle Parking in Georgetown by Brock Howell

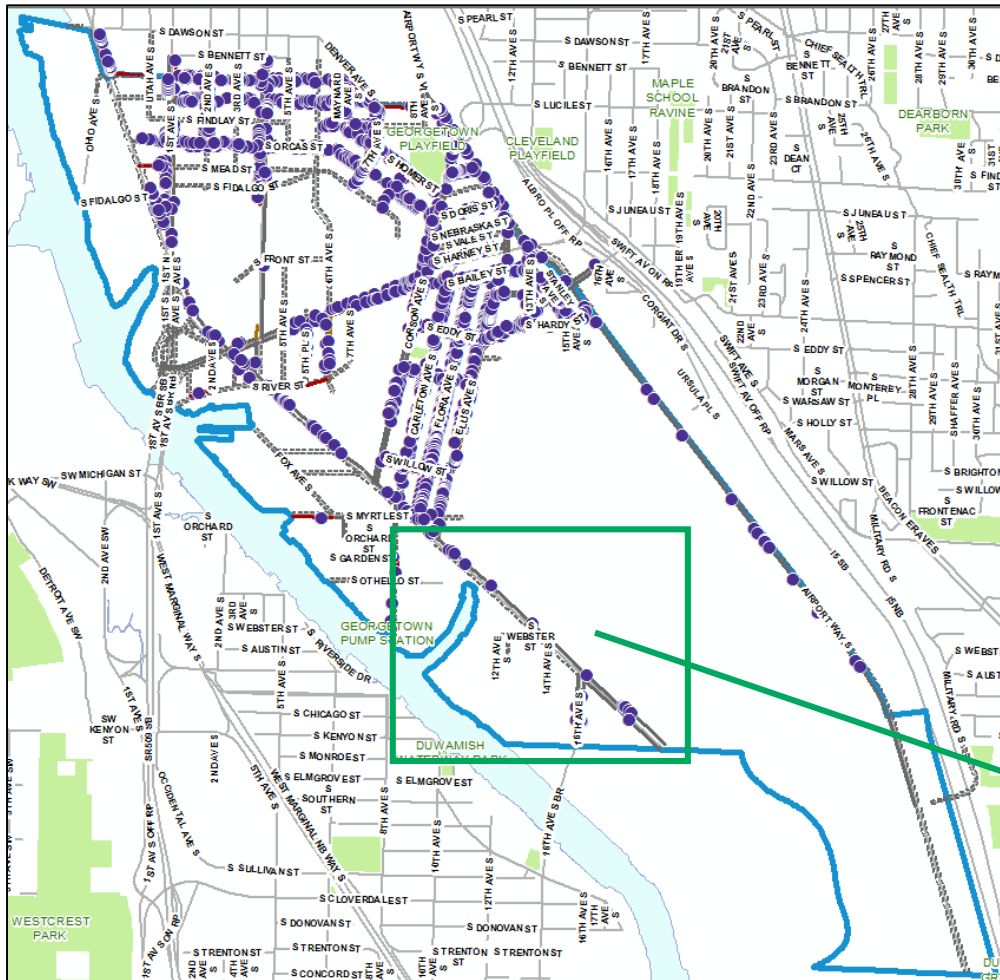


Outreach and Engagement

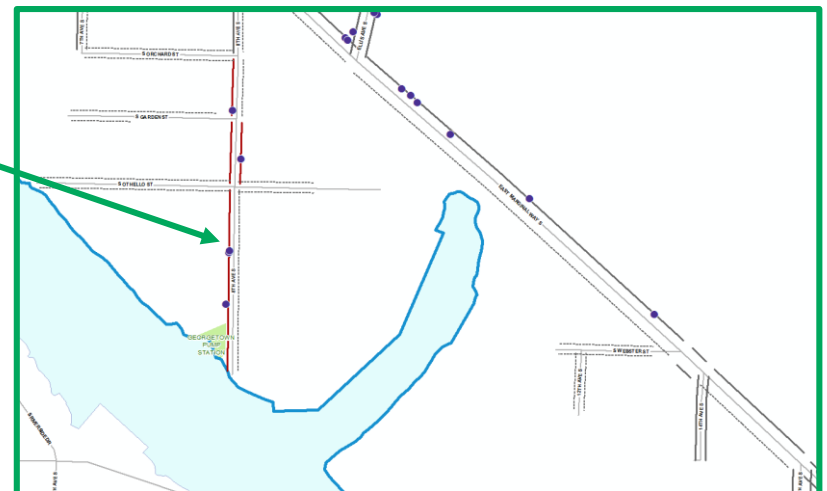
- Advisory Group
- Community Clinic(s)
 - Martin Court, Skyway Opportunity
- Online survey & interactive map
- Bike tour
- Door Knocking by Community Liaisons
- Meetings with Business, Port, Airport, Duwamish River Clean-up Coalition representatives
- Intercept surveys - St Vincent DePaul – Cantonese, Spanish, Russian
- Public meetings & community events
 - GCC, GMA, DVSS, Seattle Modal Advisory Boards, New Direction Missionary Baptist Church



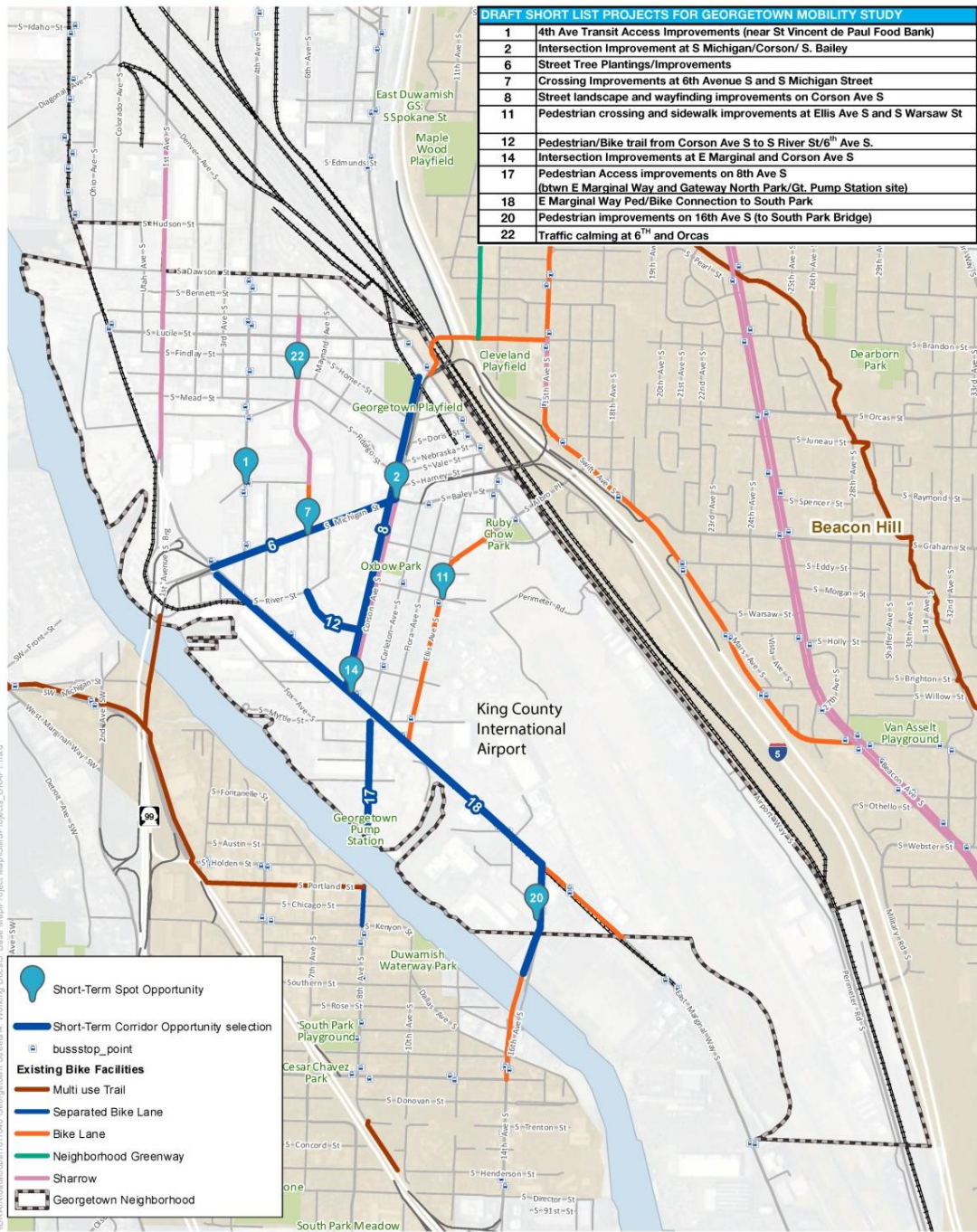
Sidewalk assessment



- Nearly 60% of data collected are uplifts
- Data will inform repair prioritization model
- W. Marginal Way between Ellis Ave. S. and S. 16th St. were reasonable in relation to residential streets



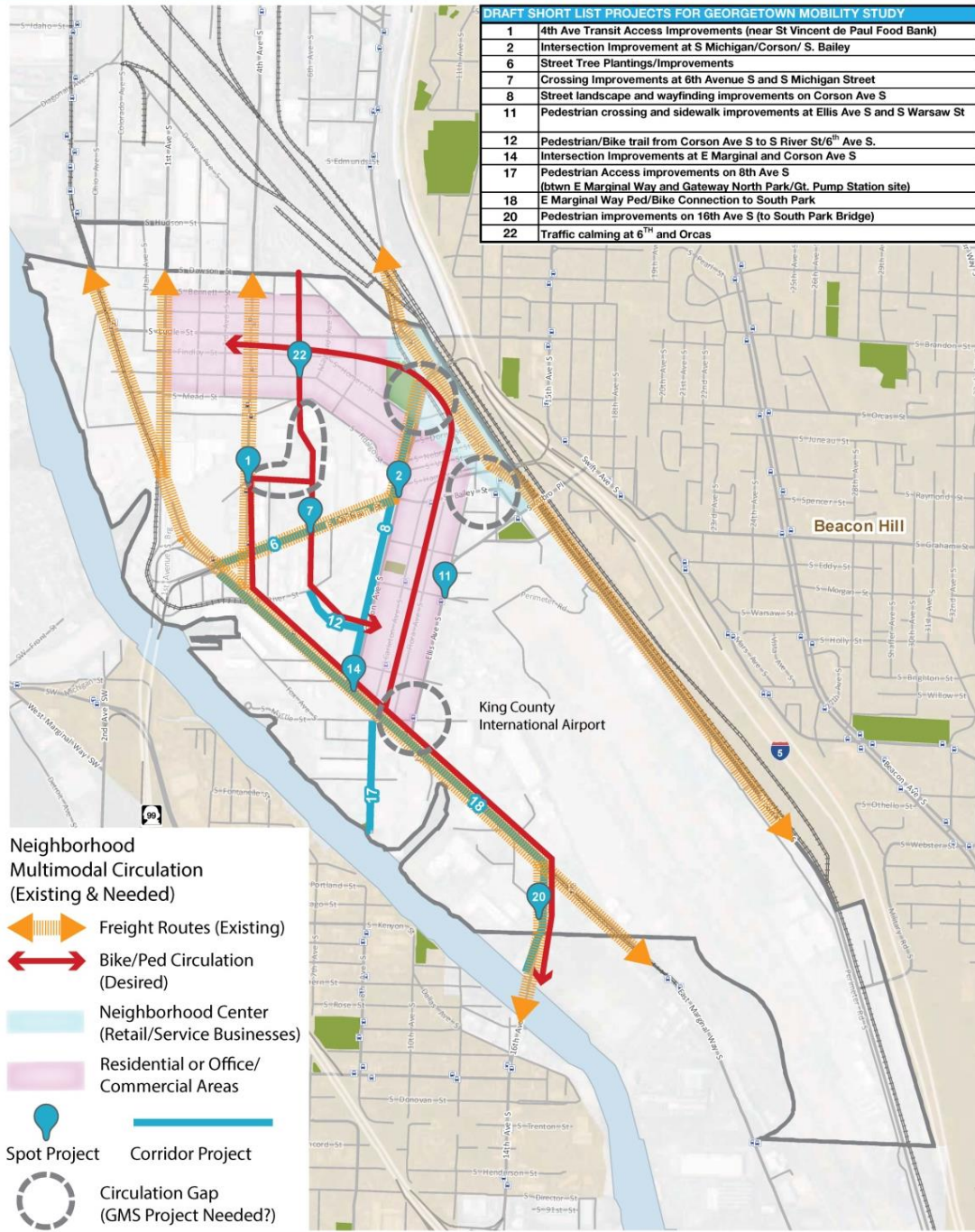
Preliminary Project List



N:\BRAIN\ata\kuba\181940 - Georgetown - Streets & Base Map\Project Map\GIS\Projects_DRAFT.mxd

POTENTIAL PROJECTS & NEIGHBORHOOD CIRCULATION ANALYSIS

DRAFT SHORT LIST PROJECTS FOR GEORGETOWN MOBILITY STUDY	
1	4th Ave Transit Access Improvements (near St Vincent de Paul Food Bank)
2	Intersection Improvement at S Michigan/Corson/ S. Bailey
6	Street Tree Plantings/Improvements
7	Crossing Improvements at 6th Avenue S and S Michigan Street
8	Street landscape and wayfinding improvements on Corson Ave S
11	Pedestrian crossing and sidewalk improvements at Ellis Ave S and S Warsaw St
12	Pedestrian/Bike trail from Corson Ave S to S River St/6 th Ave S.
14	Intersection Improvements at E Marginal and Corson Ave S
17	Pedestrian Access improvements on 8th Ave S (btwn E Marginal Way and Gateway North Park/Gt. Pump Station site)
18	E Marginal Way Ped/Bike Connection to South Park
20	Pedestrian improvements on 16th Ave S (to South Park Bridge)
22	Traffic calming at 6 th and Orcas



East Marginal Walking Tour



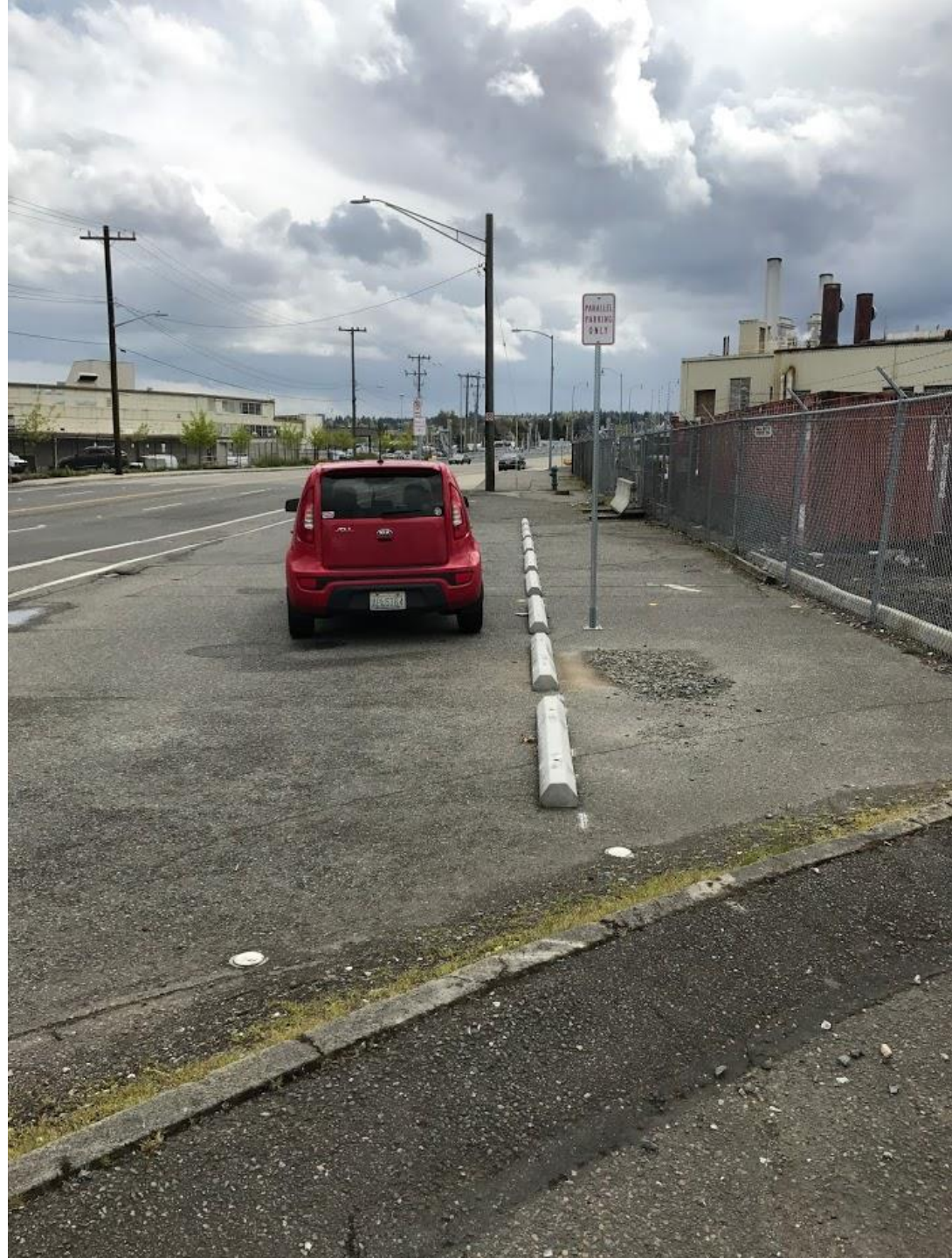
Sidewalk Conditions



S. 16th St.



Source: Rich Brown



What we've heard

- Safety concerns
 - At intersections and near destinations
 - Traffic calming
- Pedestrian & bicycle connections
 - To South Park
 - Within Georgetown
- Streetscape improvements
- Bus stop enhancements
 - Benches, garbage cans
- Large vehicle parking
- Wayfinding



Next steps

Date	Activity/action
March	Review existing conditions
April - July	Public engagement
May - June	Analyze/review project proposals
July	Refine proposals /Open House on July 18/Develop draft report per public comment
August	Final report

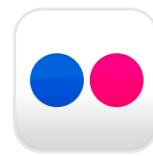
Questions?

diane.wiatr@seattle.gov | (206) 684-0811

ian.macek@seattle.gov | (206) 684-0633

www.seattle.gov/transportation/GeorgetownMobilityStudy.htm

www.seattle.gov/transportation



Seattle
Department of
Transportation