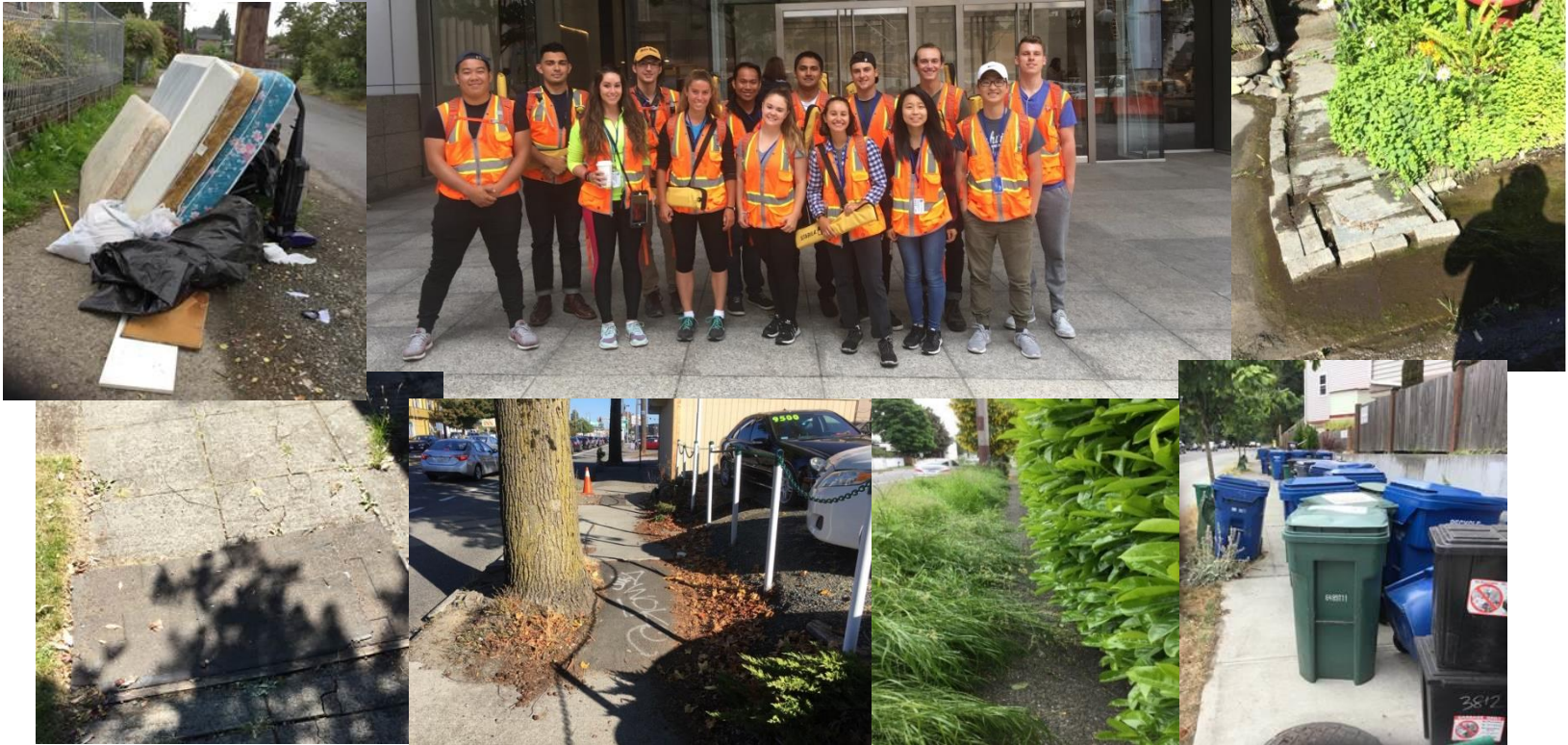


Seattle Department of Transportation

Sidewalk Repair Prioritization



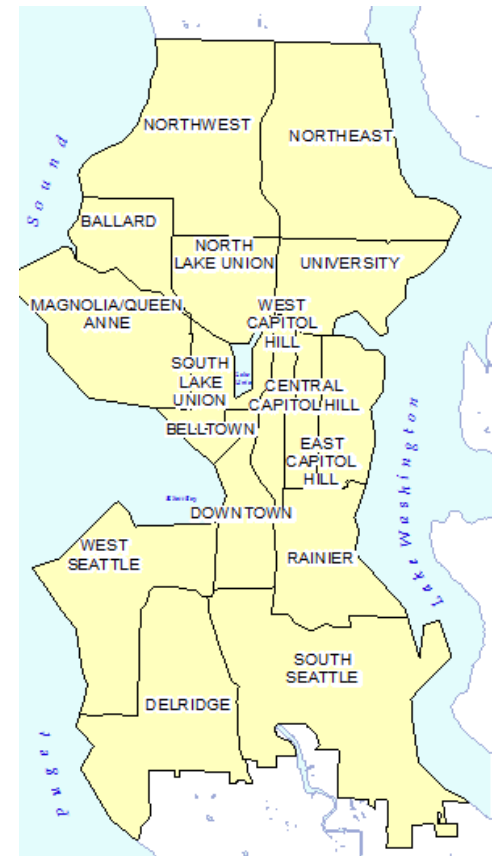
Seattle Pedestrian Advisory Board
Emily Burns & Michael Davis
Asset & Performance Management
October 11, 2017



Seattle
Department of
Transportation

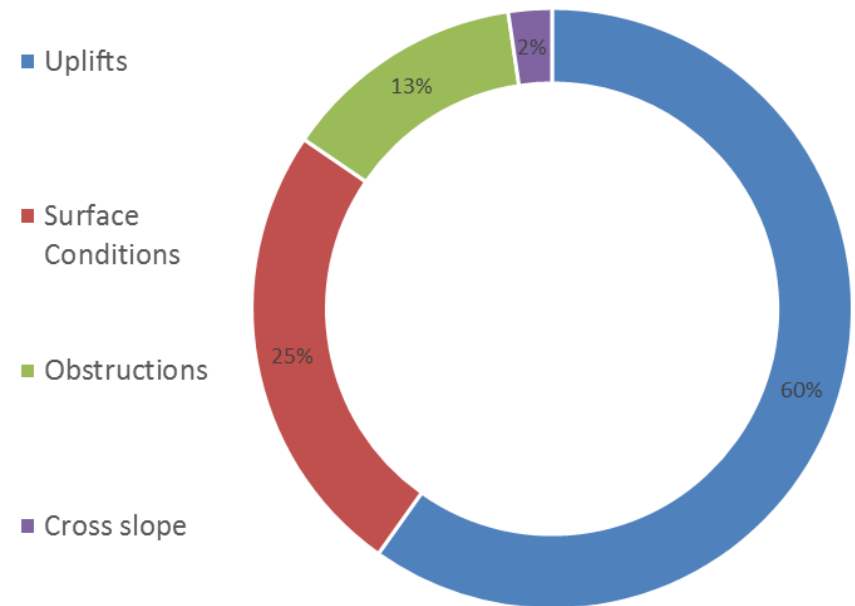
Sidewalk Assessment Project Presentation Outline

1. Collection Stats / findings
2. Timeline and next steps
3. Communications
4. Prioritizing sidewalk repairs



Collection Stats and Findings

- 34,000+ Sidewalks
- 2,323 Miles
- 156,000+ Observations
 - 92,000 Uplifts
 - 38,000 Surface Conditions
 - 20,000 Obstructions
 - 3,500 Isolated Cross Slopes



Along the way, our interns made a few friends and stayed safe...

- ✓ 358 Construction Zones
- ✓ 10 Encampments
- ✓ 3 Dogs
- ✓ 1 Cat
- ✓ 1 Hornets nest
- ✓ 1 Iron Giant
- ✓ 0 Bites or stings
- ✓ 1 Sprained ankle



Sidewalk Assessment - Timeline



Communications

- Provided a Project Communications Plan to SPAB on 8/24
- Participated in the Sound Steps, Age Friendly, Vision Zero Pedestrian Potluck on 9/20 where attendees could:
 - Review the condition data from iPads
 - Learn more about property owner responsibilities for sidewalk repair and maintenance
- Updating our [web site](#) to educate property owners on responsibility
- Updating web maps with observations, trees and ownership

Communications (con't)

- Data provided for the AARP sponsored *A City For All Hackathon*, 9/22 – 9/24
 - Team SEASidewalks won in two categories: Best Use of Open Data and Best Data Visualization. The tool visualizes data from our sidewalk assessment, prioritizes issues, shows points of interest (hospitals, ,), and demographics.
 - See https://gngu.shinyapps.io/seattle_sidewalks



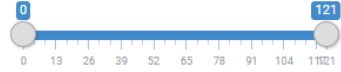
SEA Sidewalks

Main Map

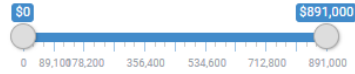
Neighborhood

All

Issue Number Range



Cost Estimate Range



Display Top Priority Issues

Number of Top Priority Issues

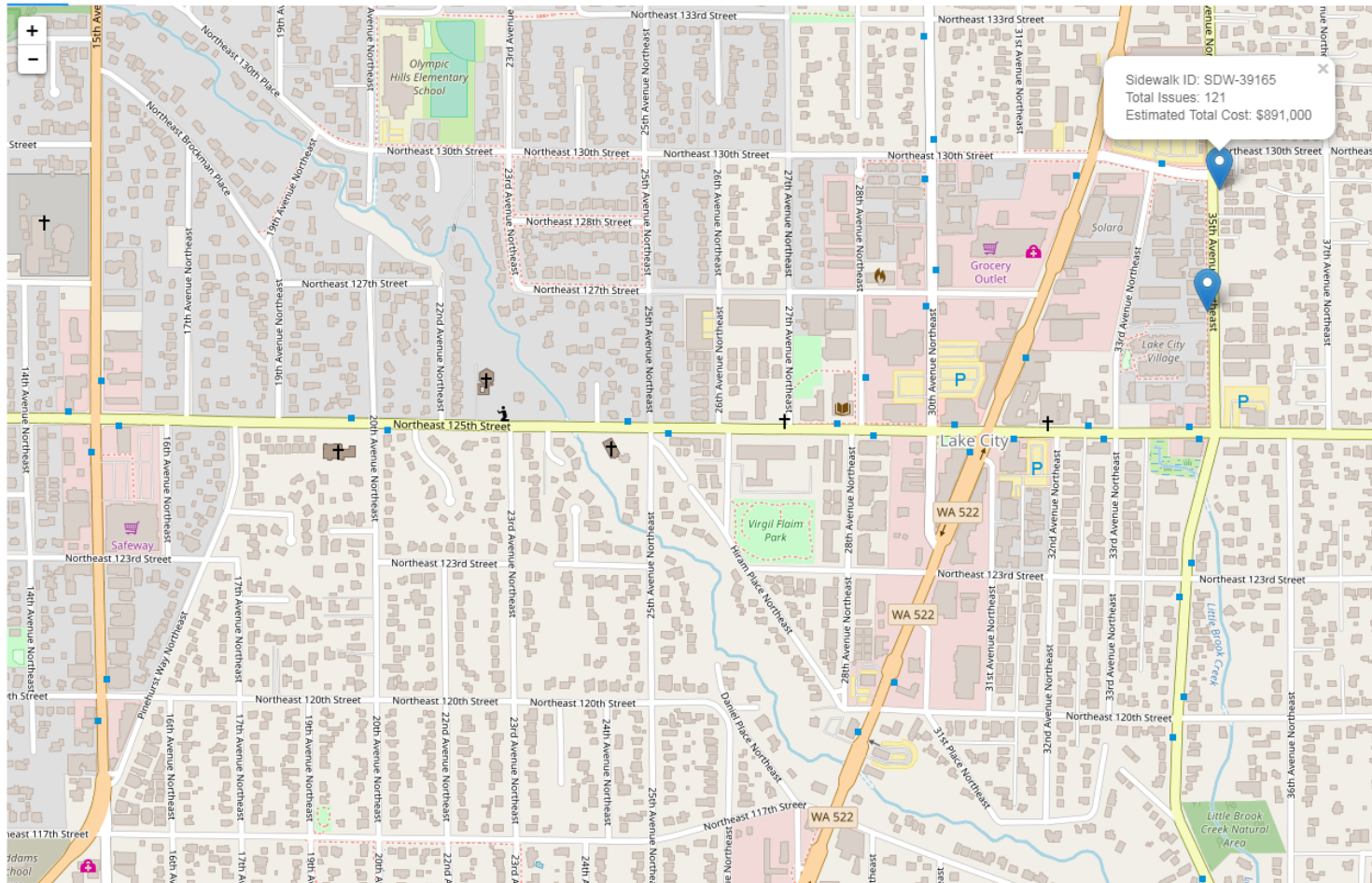
10

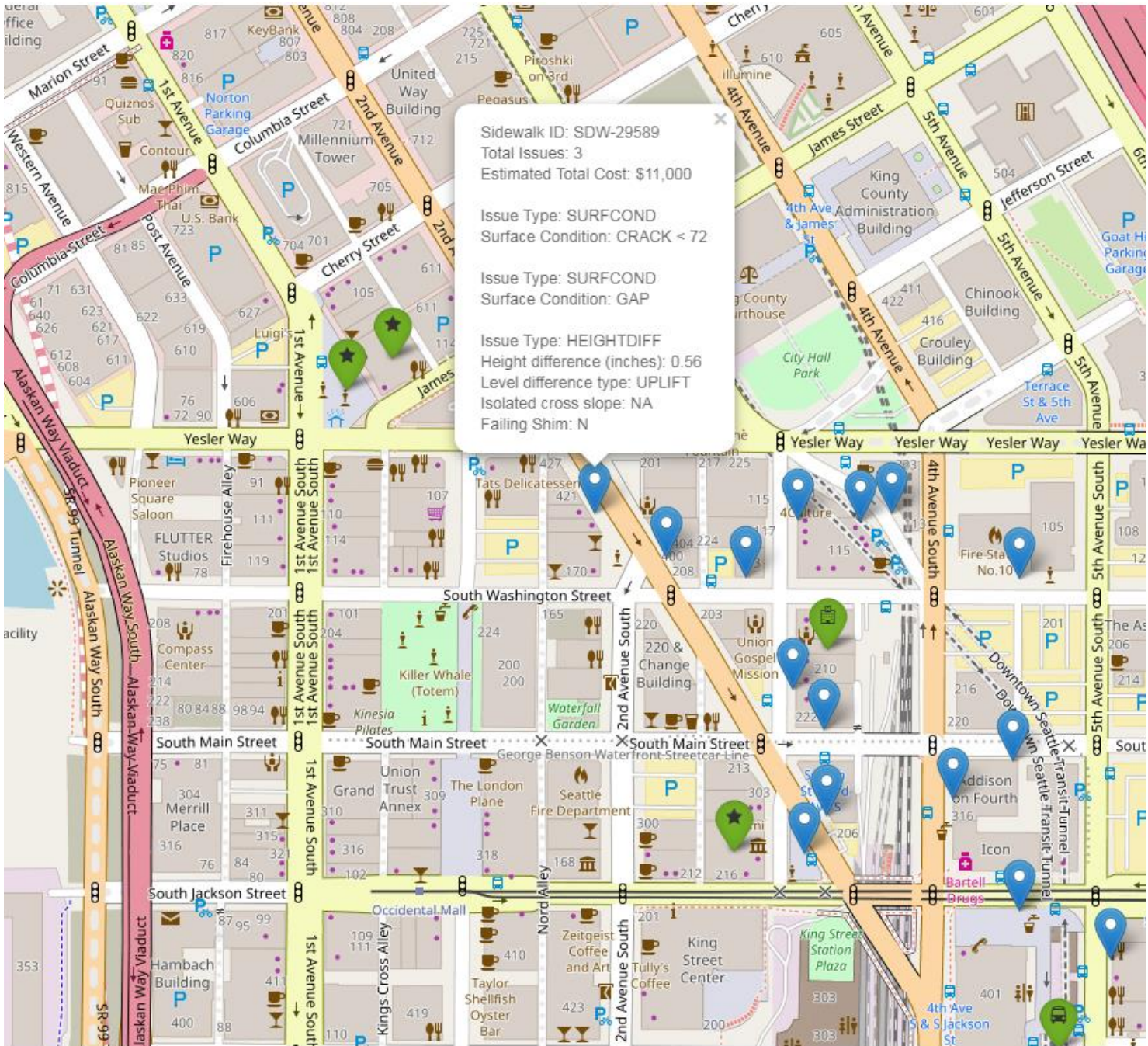
Weight Priority by Number of Issues

Display Points of Interest (POIs)

DOWNLOAD TABLE

Map Table





Sidewalk ID: SDW-29589
Total Issues: 3
Estimated Total Cost: \$11,000

Issue Type: SURFCOND
Surface Condition: CRACK < 72

Issue Type: SURFCOND
Surface Condition: GAP

Issue Type: HEIGHTDIFF
Height difference (inches): 0.56
Level difference type: UPLIFT
Isolated cross slope: NA
Failing Shim: N

Scoring Criteria

Goal: Allocate Limited Budget to Provide Best Value for Community



- **Safety Risk Score**

- Lift, Settlement, Cracks, Gaps...



- **Mobility Impairment Score**

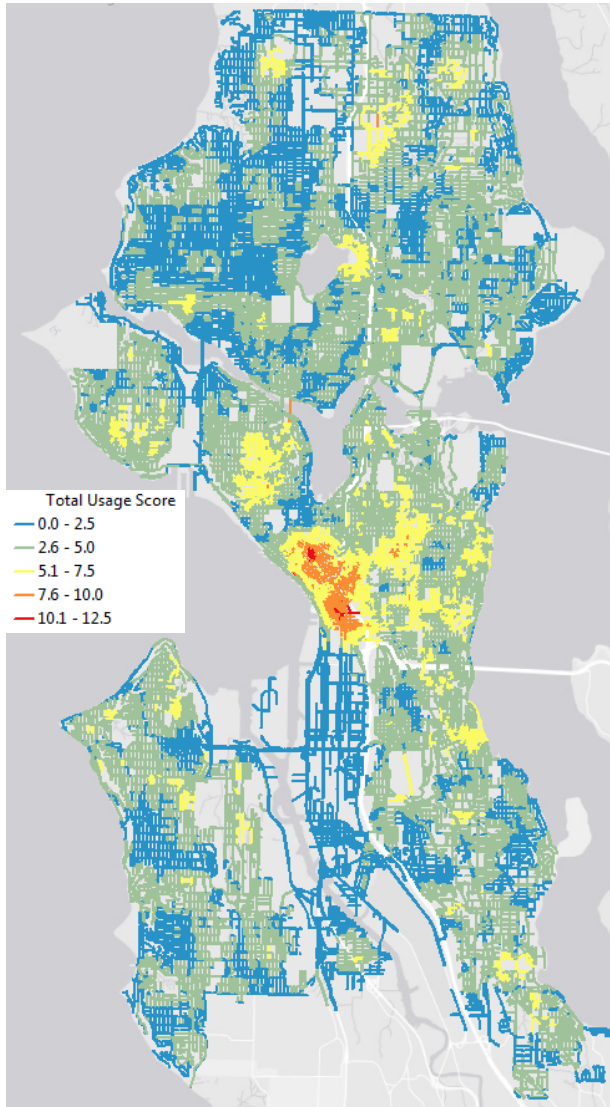
- Obstruction, Minimum Passable Width & Height, Cross-slope...

Scoring Criteria



- Cost Score
 - Maintenance, Repair, Replacement...

Usage Score

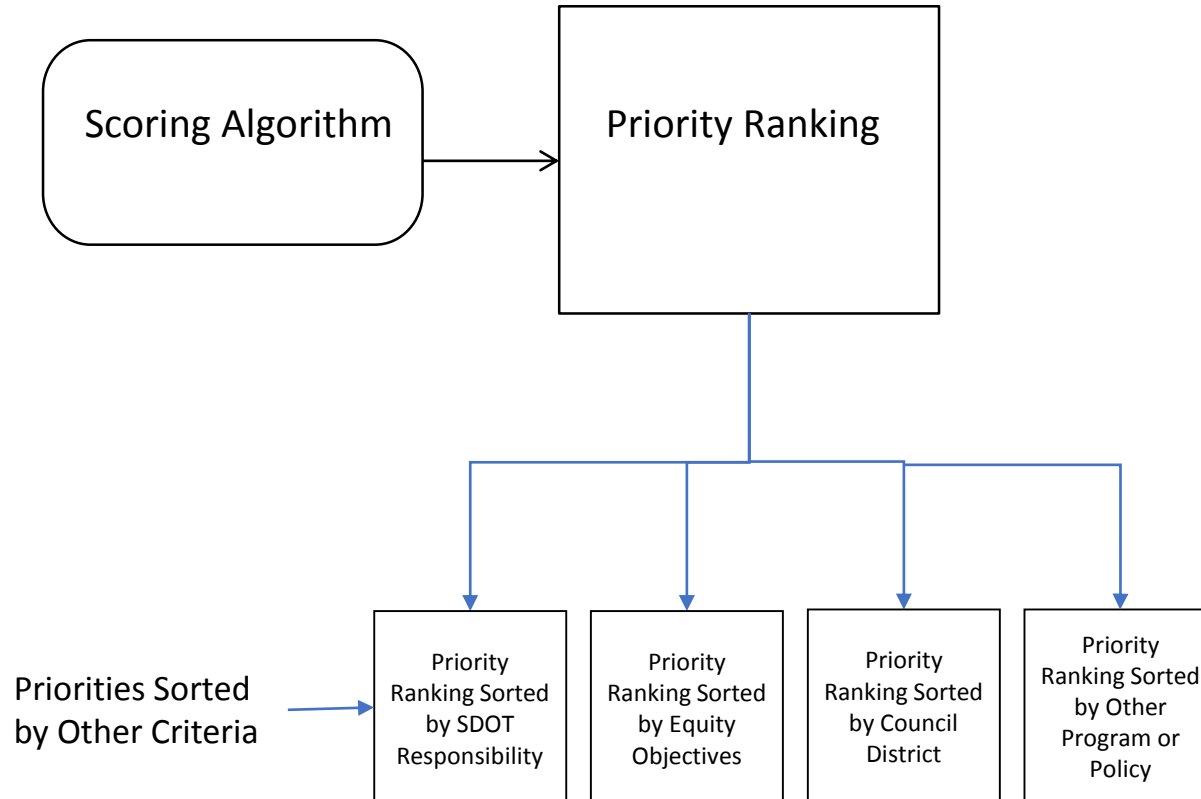


Government Facilities
Transit Stops
Schools
Senior/Disabled Housing

Hospitals
Employment centers
Goods and Services

-
- Estimated usage based on proximity to 6 facility types (within $\frac{1}{4}$ mi radius)
 1. Facility count
 2. Normalize between 0 and 1
 3. Multiply by facility score
 4. Aggregate for sidewalk usage score

Draft Priority Screening Tool



Purpose of Prioritization Tool

Focuses efforts on highest value maintenance, repair, and replacement

- Final Selection of Sidewalks for Treatment Will Consider:
 - ✓ Specifics of Each Particular Problem and Solution
 - ✓ Coordination with Other Programs / Funding Opportunities
(Sidewalk Reactive Maintenance Program, Pedestrian Master Plan, Seattle Greenways, Safe Routes to School, Age-Friendly Initiative...)
 - ✓ Economies of Scale, Program Efficiencies
 - ✓ Race and Social Justice Objectives, Geographical Equity, Seattle 2035 Comp Plan, Other City Programs and Policies

Questions?

Emily.Burns@seattle.gov | (206) 733-9972

<http://www.seattle.gov/transportation/assetmanagement.htm>

www.seattle.gov/transportation/

