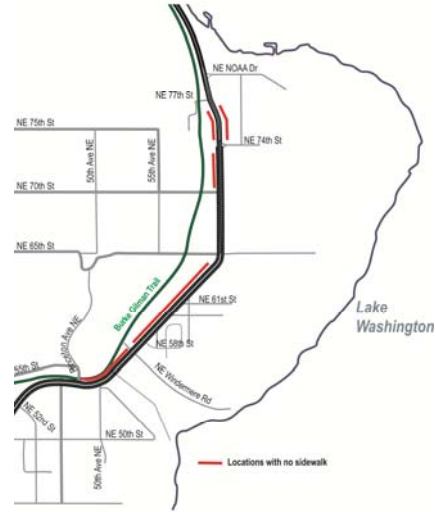




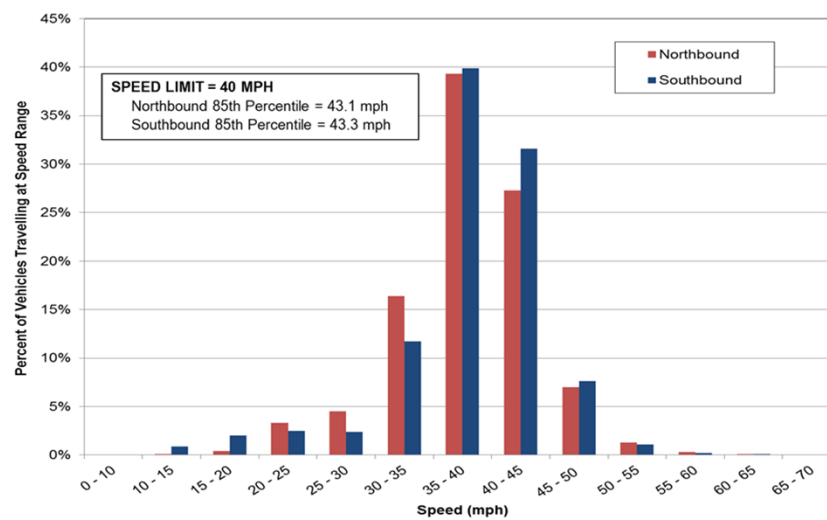
Sand Point Way Corridor Key Issues

- Lack of sidewalks or walkways along many segments;
- High vehicle speeds (40+ mph);
- Crosswalks not protected from vehicle left-turns;
- Lack of left-turn lanes that increase weaving movements;
- Discontinuous pedestrian access at Magnuson Park Main Gate (NE 74th St).

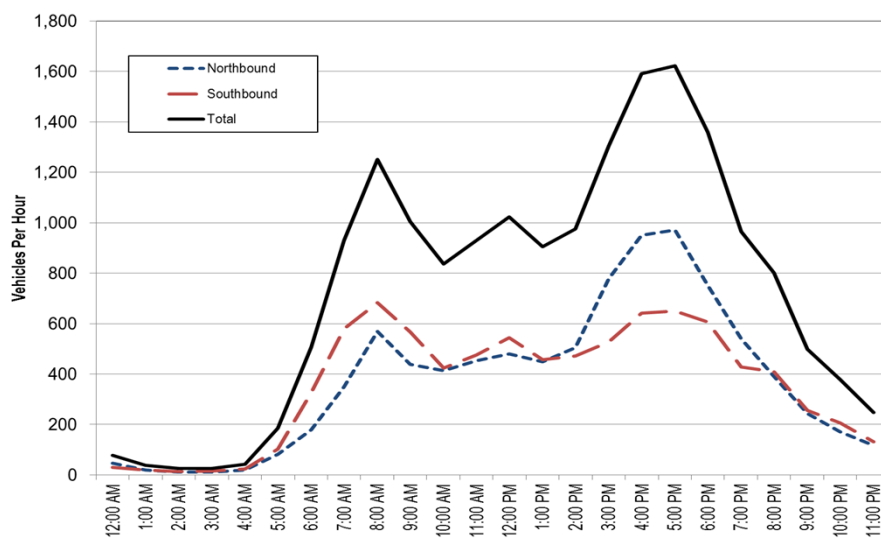
Missing Sidewalks



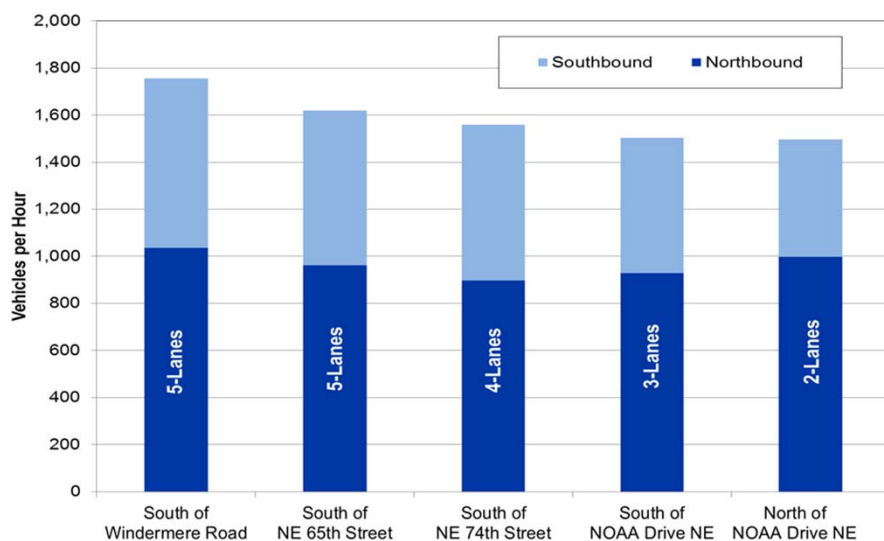
Vehicle Speeds



Volumes on Corridor (24-Hour)

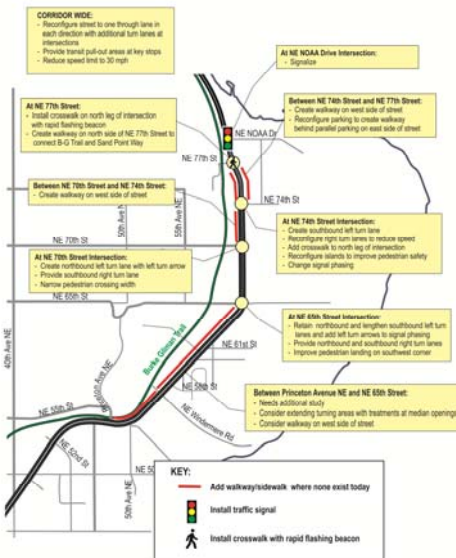


Volumes on Corridor (PM Peak Hour)



Recommendations

- Convert 4-lanes to 3 lanes plus auxiliary turn lanes;
- Add walkways in reclaimed street and parking space;
- Add crosswalks at NE 77th St and NE 74th St;
- Add left turn signal phase at NE 74th St and NE 70th St;
- Reduce the speed limit.



Questions?

Shauna.Walgren@seattle.gov | 684-8681

<http://www.seattle.gov/transportation>



Seattle
Department of
Transportation