

S King St (between I-5 and Rainier Ave)

Role

Slow local green street, with seating and landscaping suitable for community oriented programming.

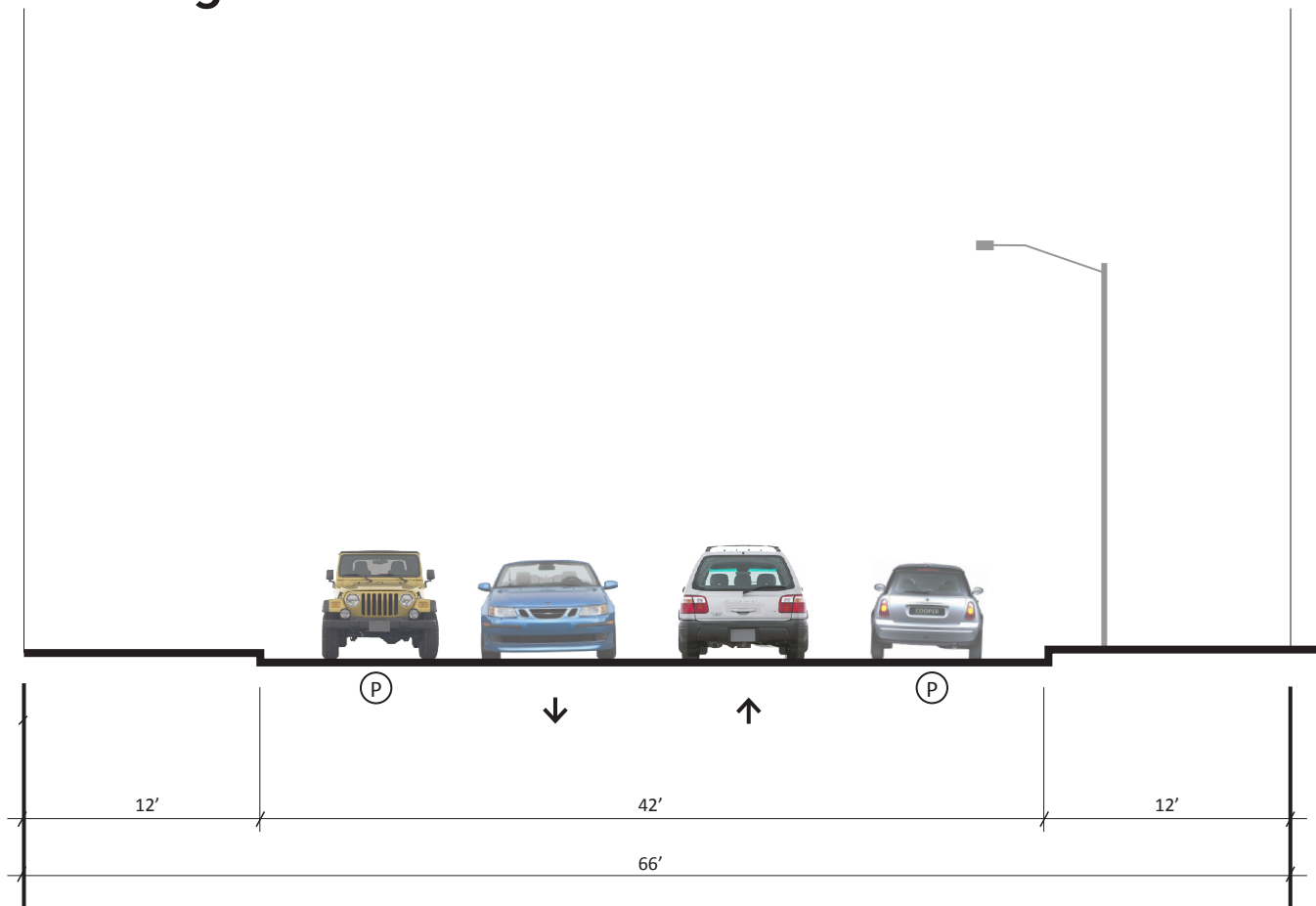
Recommended Design Elements

- Wide pedestrian, landscaping, and furniture zones
- Landscaped curb bulbs
- Bioretention with an underdrain
- King style pedestrian lighting fixture
- Appropriate tree canopy
- Space for outdoor good display
- Maintain parking
- Seating, street furniture

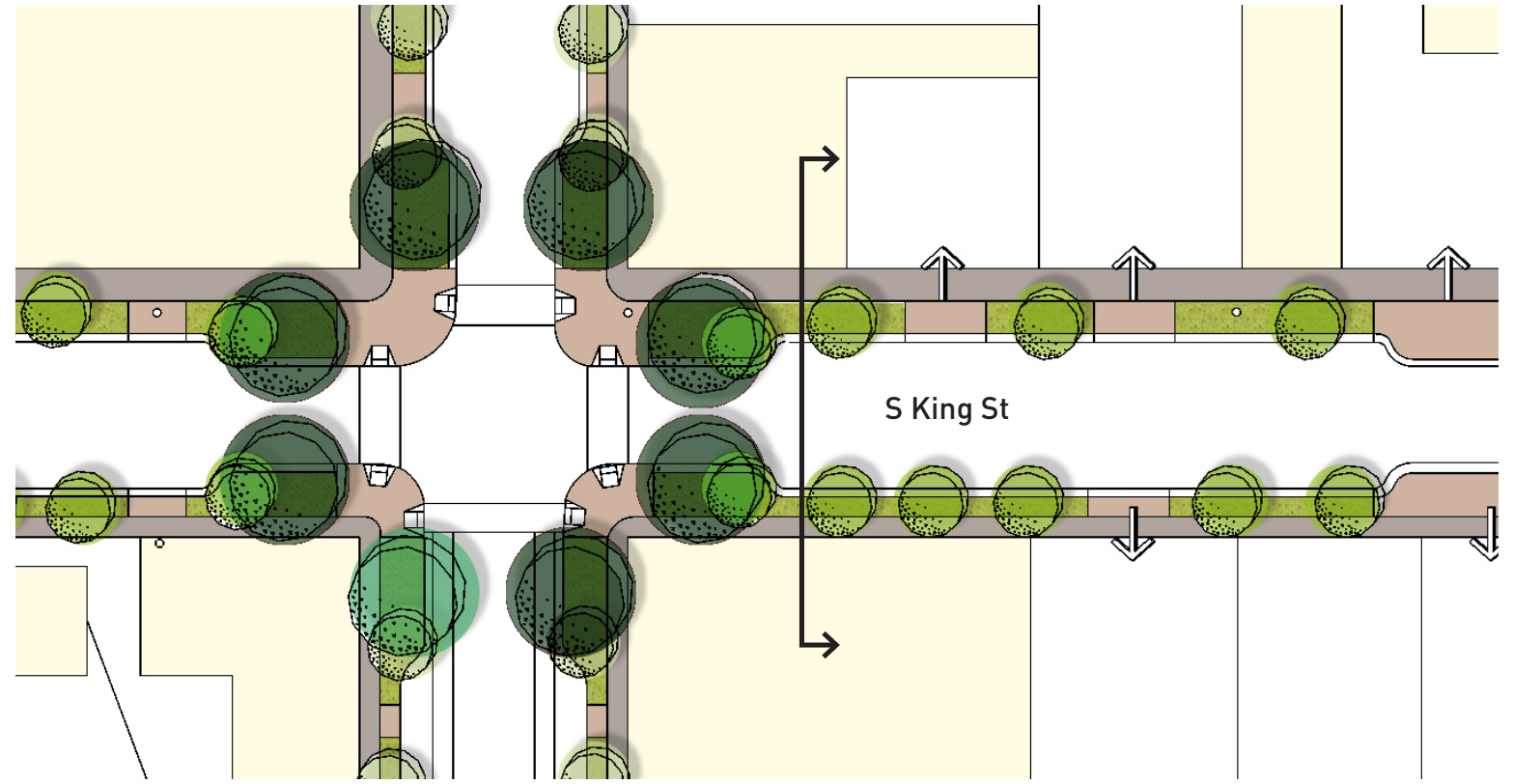
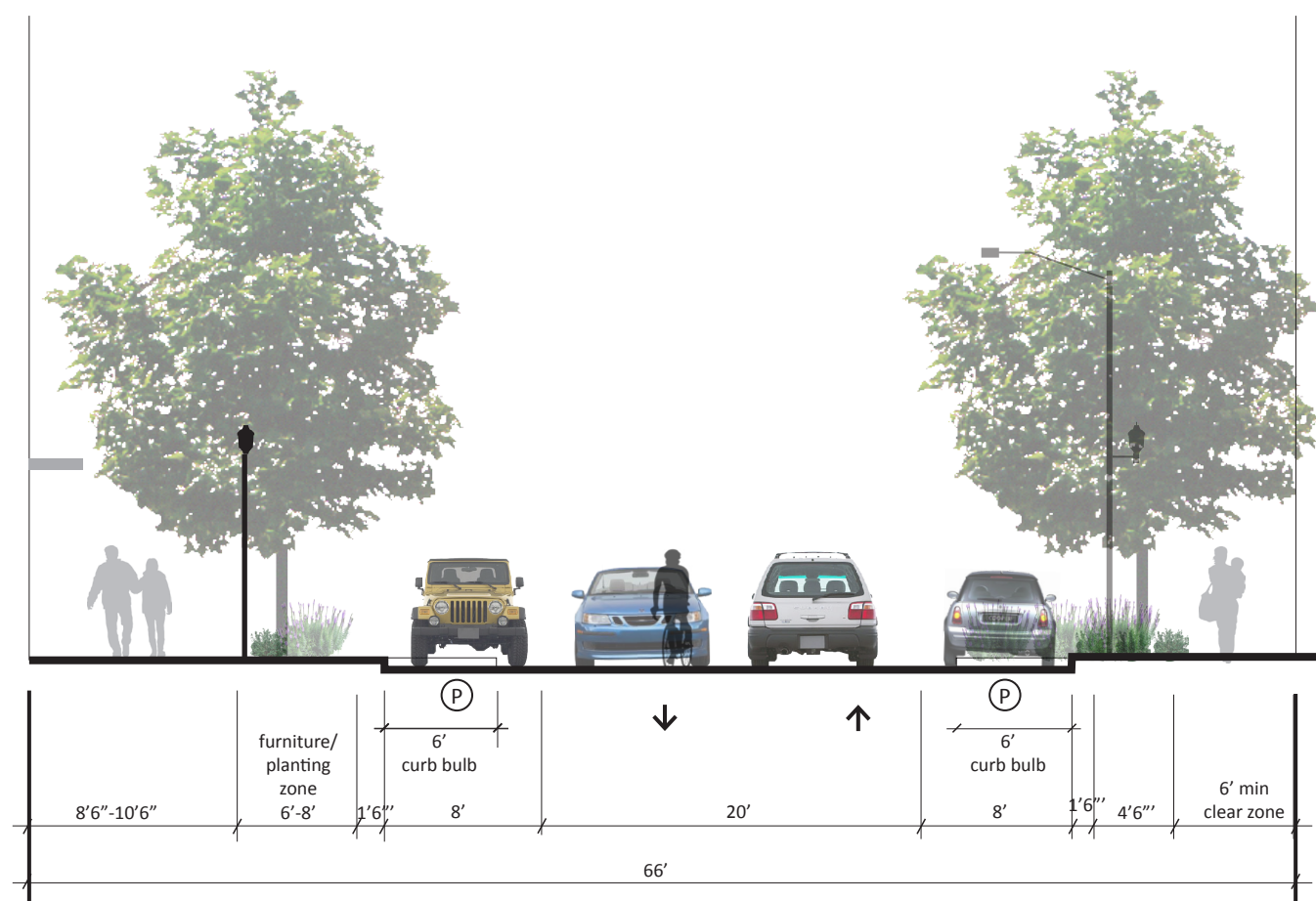
Coordination Opportunities

- Potential neighborhood greenway
- InterimCDA NSF application
- Private redevelopment

Existing Section



Proposed Typical Section



Typical Plan

Sidewalk Detail



landscape/furniture/vending zone (6'-8' on north side, 4'-5' on south side)



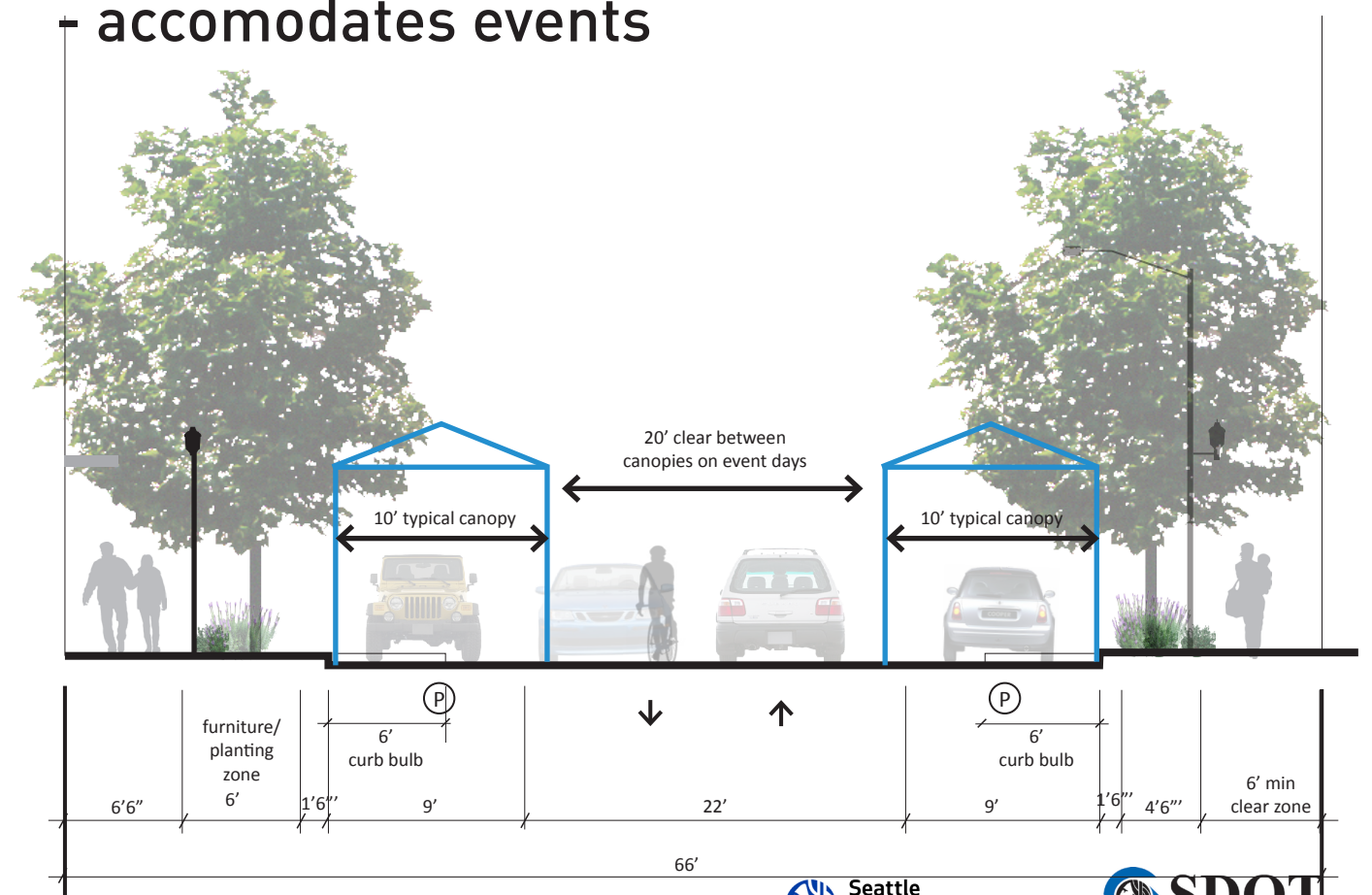
pedestrian clear zone (8'-10' on north side; 6' on south side)



frontage/ vending zone where feasible (4'); maintain minimum 6' wide unobstructed pedestrian zone

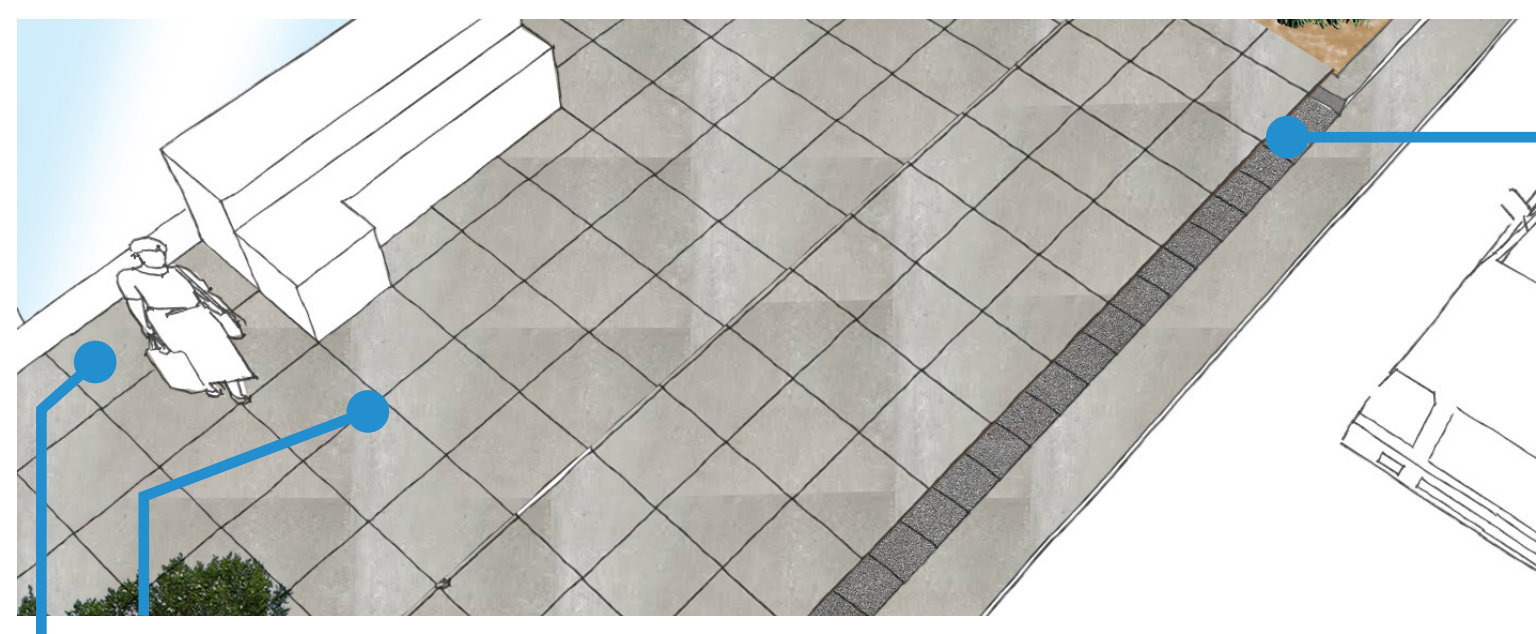


Proposed Section between 10th Ave and 12th Ave - accommodates events



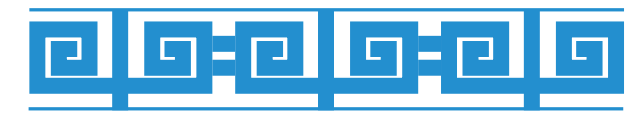
Landscaping Guidance

SIDEWALKS



Pedestrian Clear Zone:
Concrete, 2'x2' grid.
Expansion Color: Light grey.

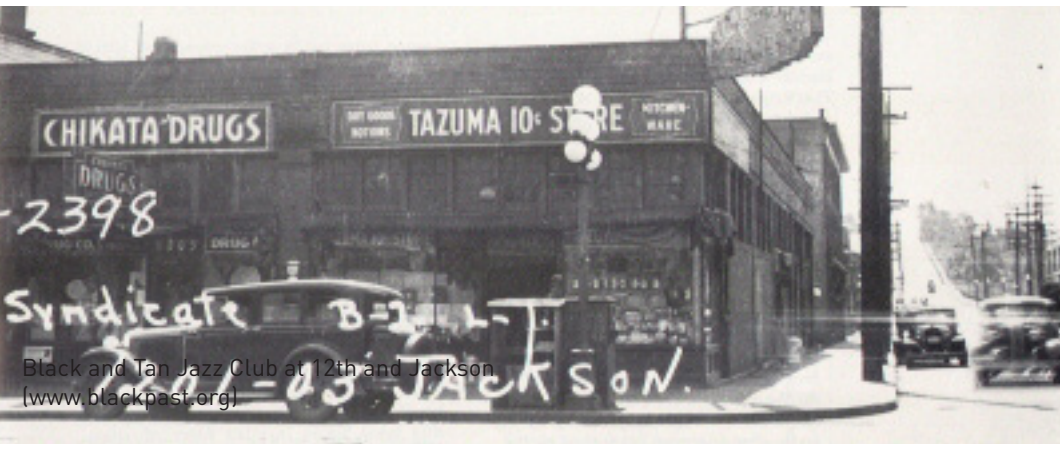
Sidewalk Design
Encourage new developments to provide a border of stamped concrete along the curb or landscape zone to generate a unified district identity.



An example of a stamped concrete border design



Decorative elements: Non-slip stamped and patterned concrete paving, bronze inlays in paving, murals, public art, and wall plaques may be used in frontage zones, on buildings, or in the landscape/furniture zone (outside pedestrian clear zones) to represent the history and culture of the neighborhood.



STREET TREES

S Jackson St



Zelkova Village Green (30' centers)



Emerald Sunshine Elm



Magnificent Amur Maackia

Accent trees throughout neighborhood

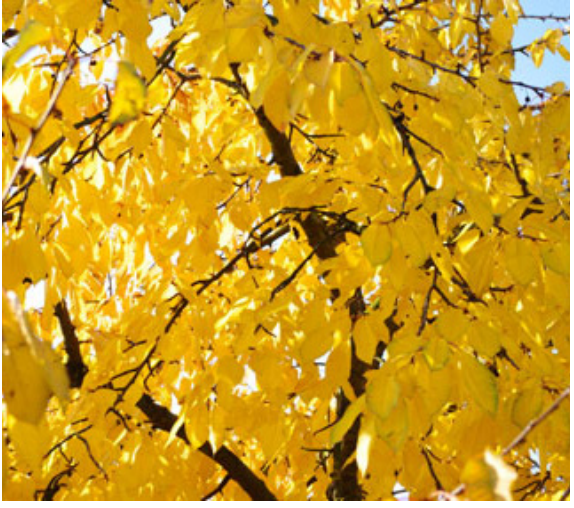


Classic flowering cherry or plum



Briotti Horsechestnut

Trees on non-arterials



1. Scarlet Sentinel Maple where no overhead wires
2. Scarlett Oaks where no overhead wires adjacent to WSDOT property
3. Japanese and American Hornbeam where overhead wires



Japanese Red Pine

Landscaping Guidance

UNDERSTORY PLANTING

- Understory planting shall be drought-tolerant and predominantly less than 24' in height to maintain the sense of an open street with clear sight lines.
- On S Weller St, S King St, and 10th Ave S, planting areas should be generally large and incorporate rain gardens where possible.
- Plantings should include enough evergreen material to maintain the sense of green during the winter months. 80% of plants should be selected from the Green Factor plant list. Plants from the Asian bioclimatic zone are recommended where possible. They should have a relatively simple mix of species to establish a unifying character to the street. Select for species that will maintain a full and lush condition with low maintenance.



STREET FURNITURE

- The materials for the furnishings should be durable in a street setting, such as cast metal, ipe wood, or stone.
- Provide waste trash receptacles along corridors.
- Seating should consist of movable chairs or stools. Low tables and some fixed seating can also be added where space permits.
- Bus stops should be integrated with building facades where redevelopment is proposed.
- Street furniture should not be located within the clear pedestrian zone of the sidewalk, to ensure a clear path of travel.
- Weather protection is recommended along all corridors.



S Jackson St (between I-5 and Rainier Ave)

Role

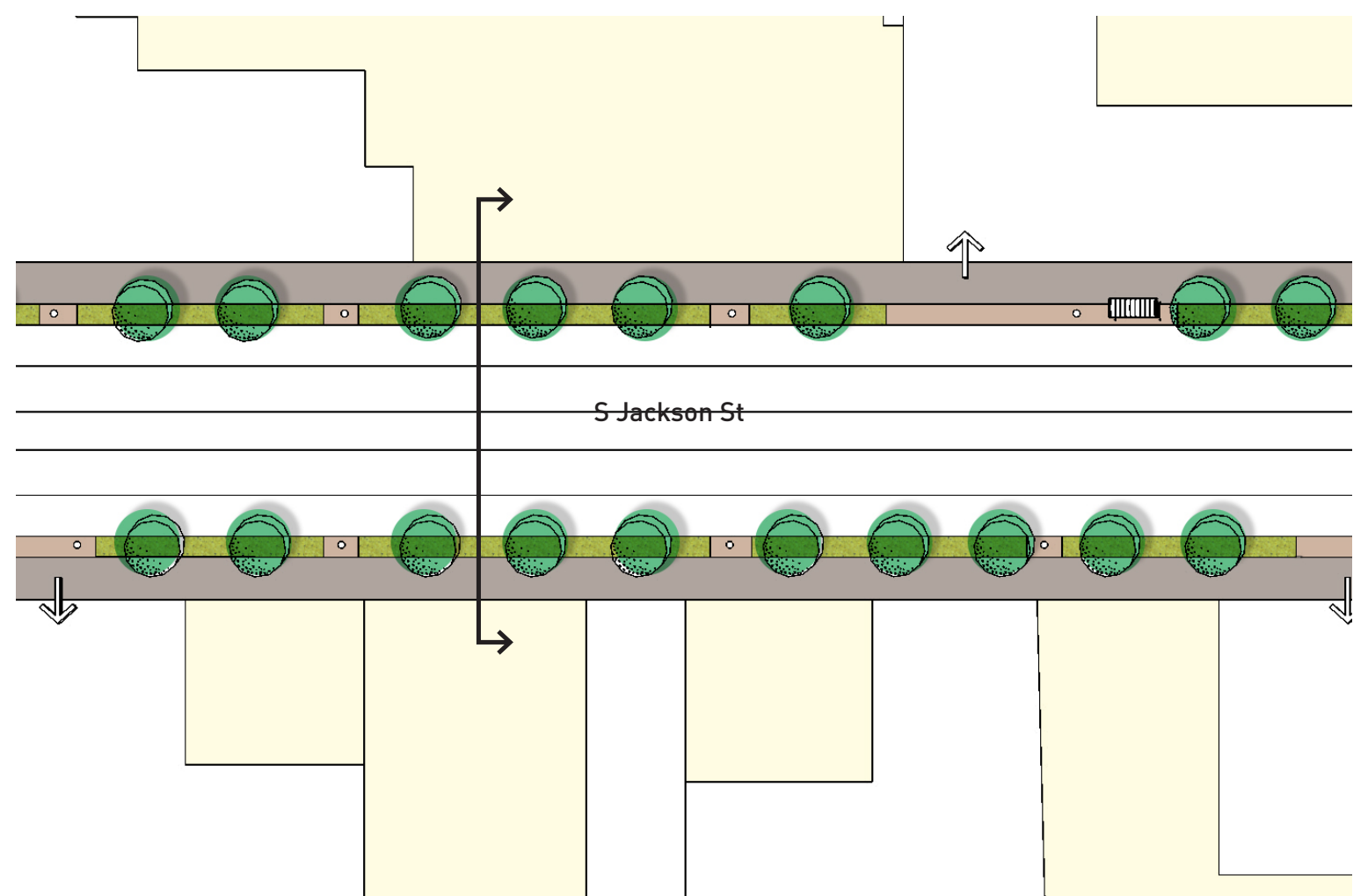
Main street of Little Saigon, a commercial core and transit and pedestrian spine.

Recommended Design Elements

- Sidewalk art to reveal rich cultural history
- Crosswalk at 10th Ave
- Continuous landscaping zone with understory planting to buffer pedestrians from traffic
- Red King Style Pedestrian light fixture as existing on west of I-5
- Appropriate tree canopy
- Outdoor goods display and vending

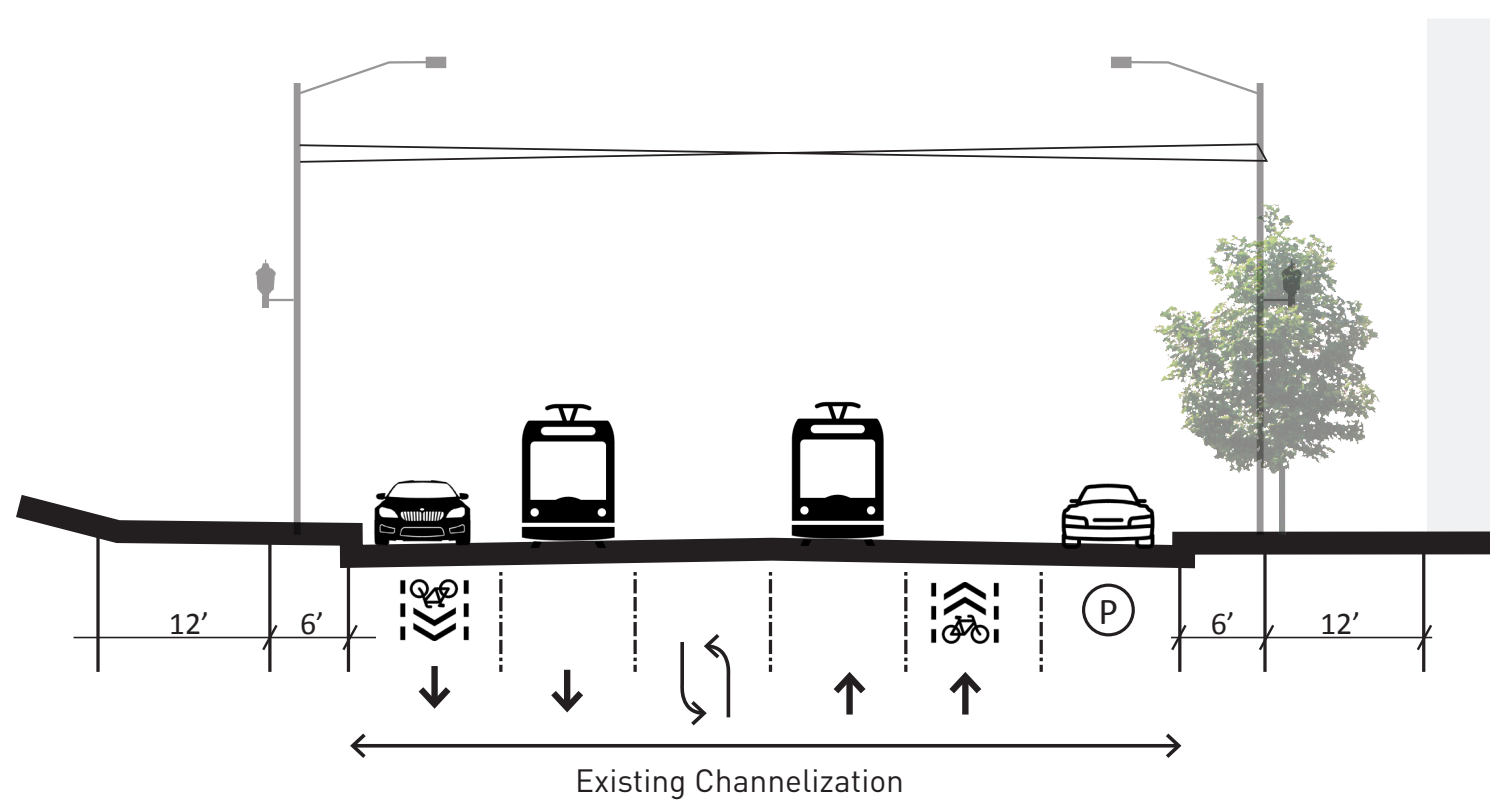
Coordination Opportunities

- Private development
- Potential future BRT project

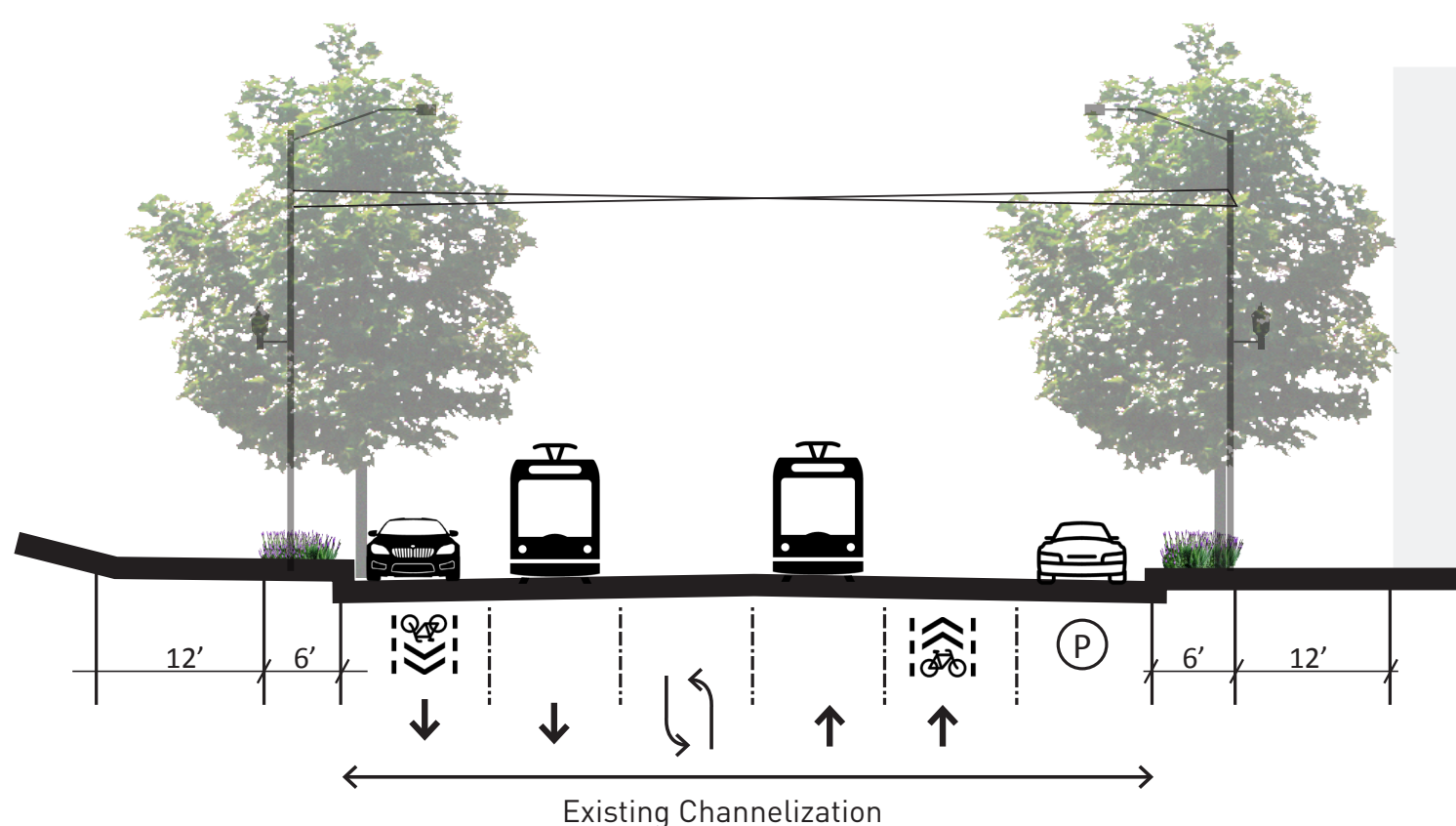


Typical Plan

Existing Section



Proposed Section



Sidewalk Detail



landscape/furniture/vending zone (6')



pedestrian clear zone (8')



story/frontage/vending zone (4')



Black and Tan Jazz Club at 12th and Jackson
(www.blackpast.org)



S Weller St (between I-5 and Rainier Ave)

Role

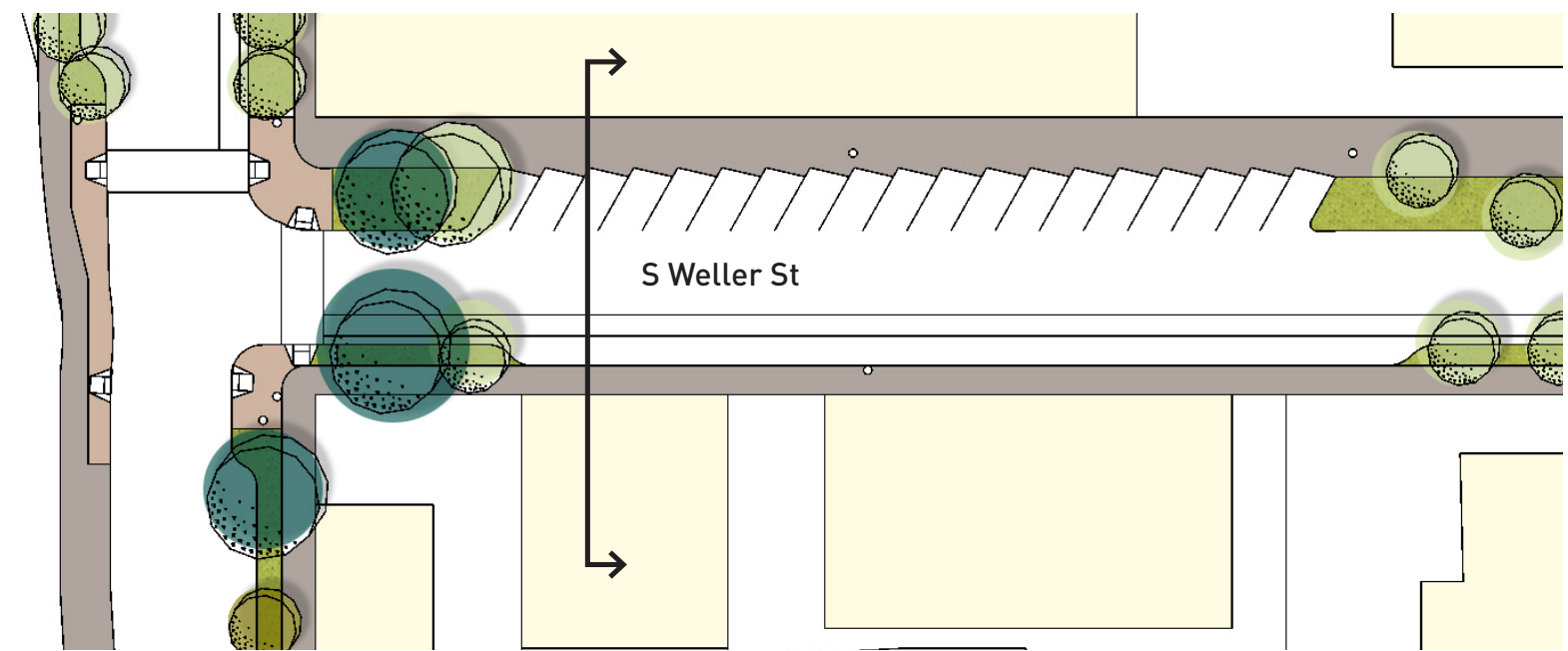
Slow local green street with landscaping.

Recommended Design Elements

- Landscaped curb bulbs
- King style pedestrian lighting fixture
- Appropriate tree canopy
- Maintain parking
- Bioretention with an underdrain
- Seating, street furniture

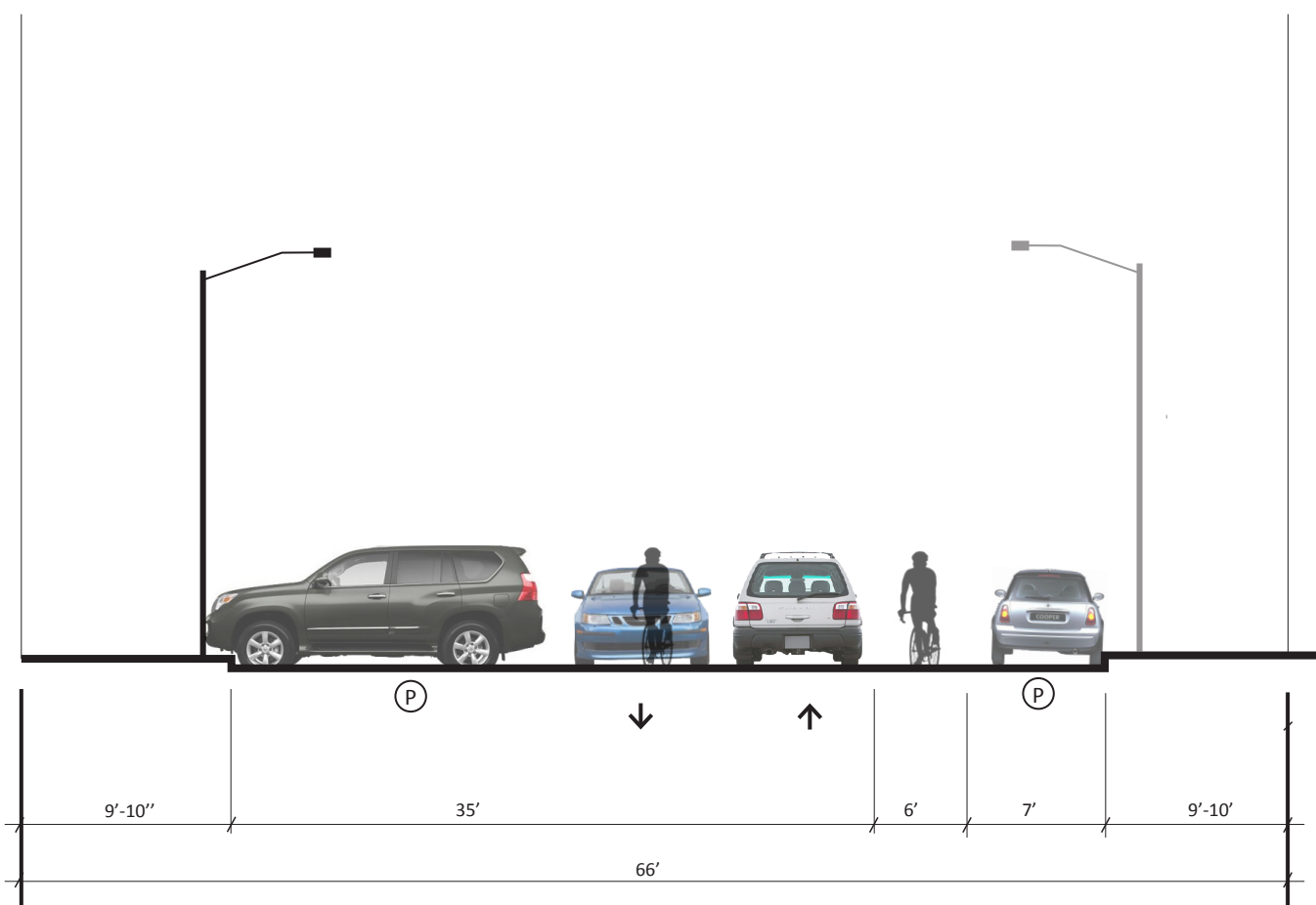
Coordination Opportunities

- Potential neighborhood greenway
- Private redevelopment

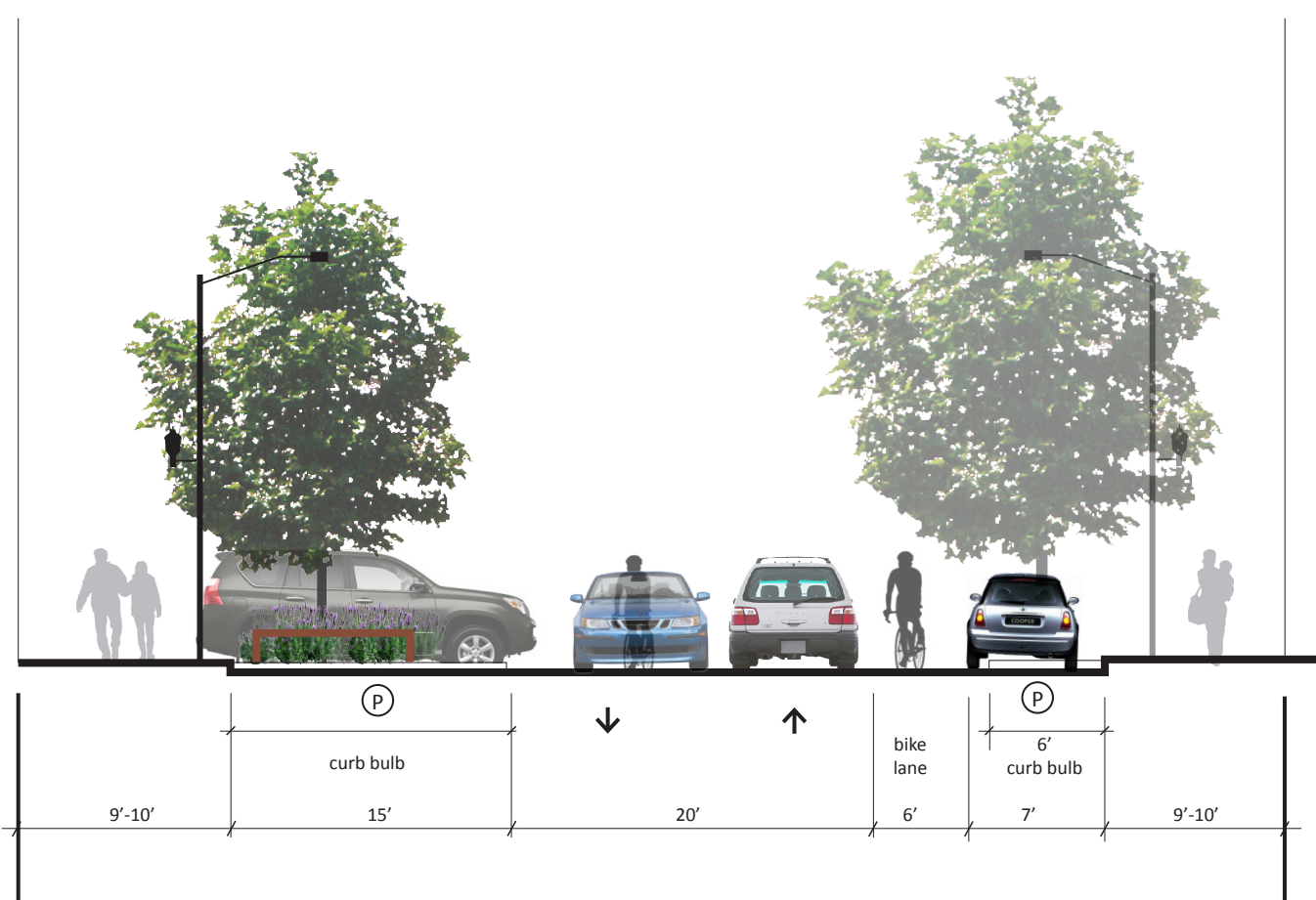


Typical Plan

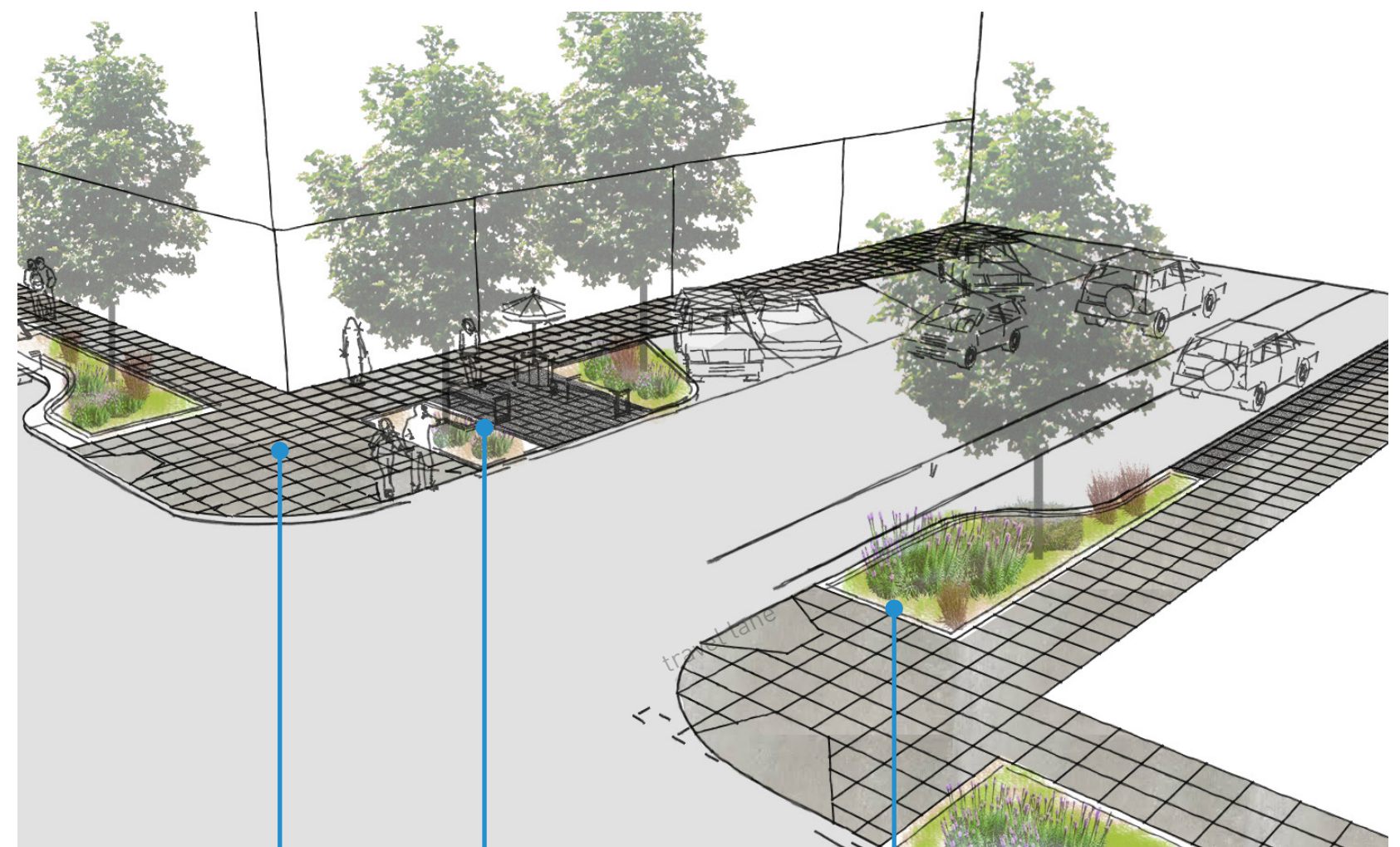
Existing Section



Proposed Section



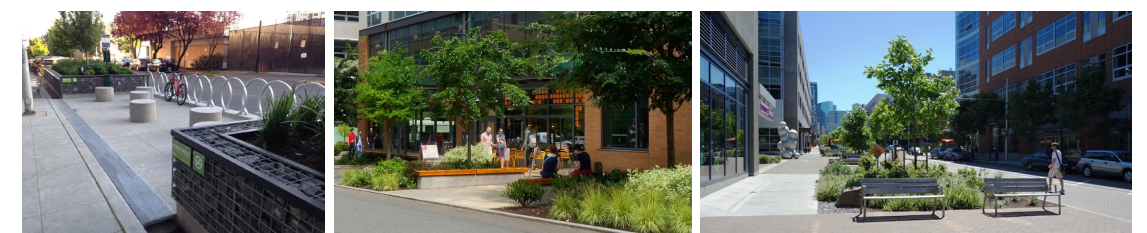
Sidewalk Detail



along the south side, 6' landscaped curb bulbs at intersections and appropriate mid-block locations; consider bioretention with an underdrain



back-in angle parking along north side creates space for landscaping and street furniture at corners and mid-block locations



pedestrian clear zone (9'-10' on north side, 9'-10' on south side)



10th Ave S (between Yesler Hillclimb and S Weller St)

Role

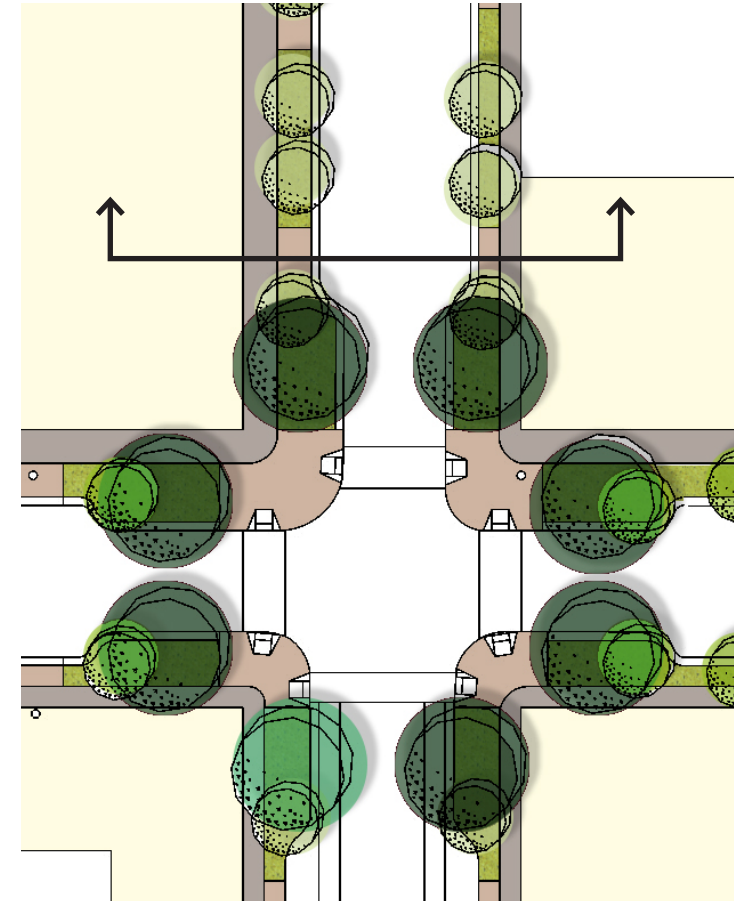
Front door from Yesler Terrace into Little Saigon

Recommended Design Elements

- Wide pedestrian, landscaping, and furniture zones
- Landscaped curb bulbs
- Bioretention with an underdrain
- King style pedestrian lighting fixture
- Appropriate tree canopy
- Space for outdoor good display
- Maintain parking

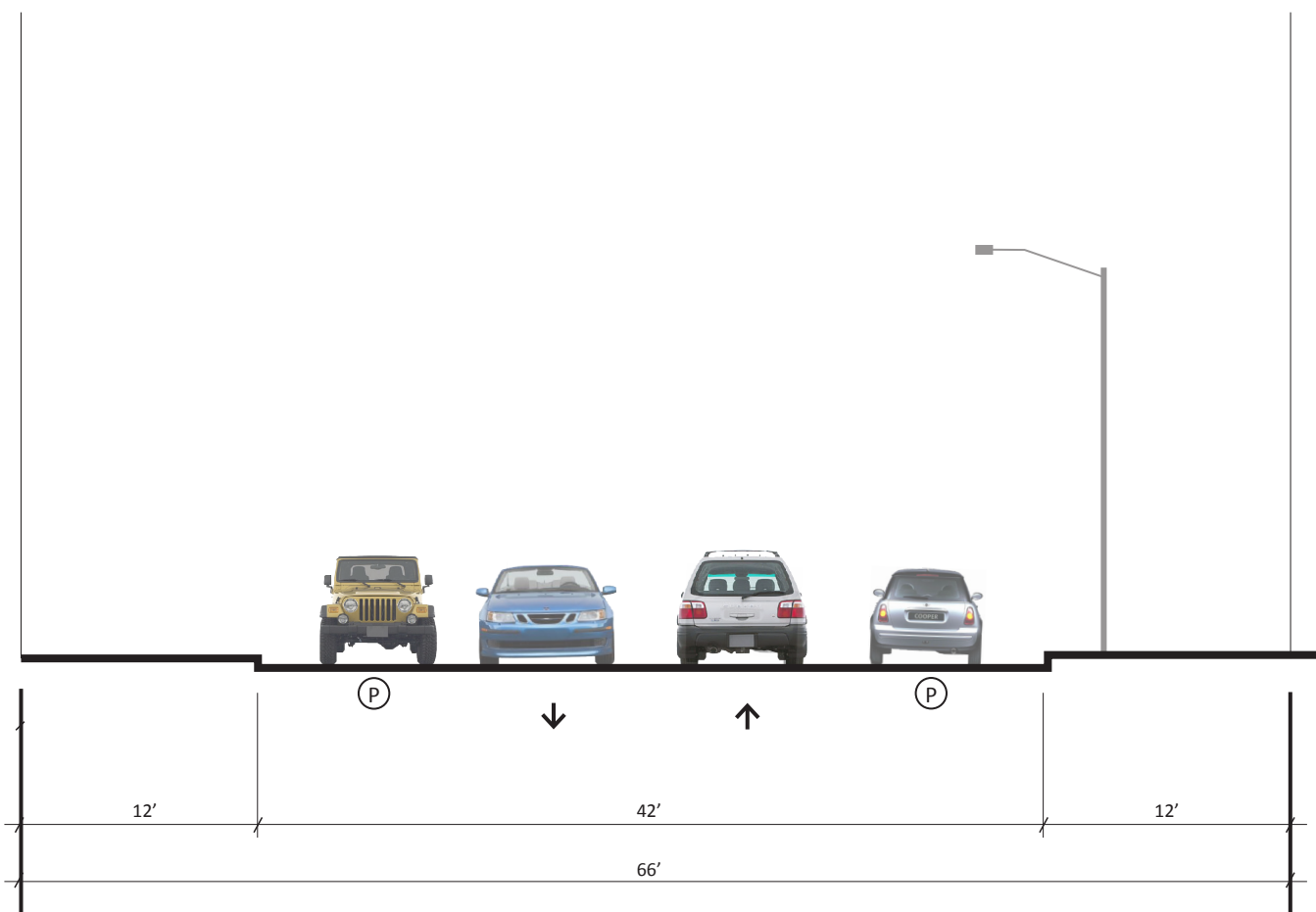
Coordination Opportunities

- Private redevelopment
- Potential neighborhood greenway segment

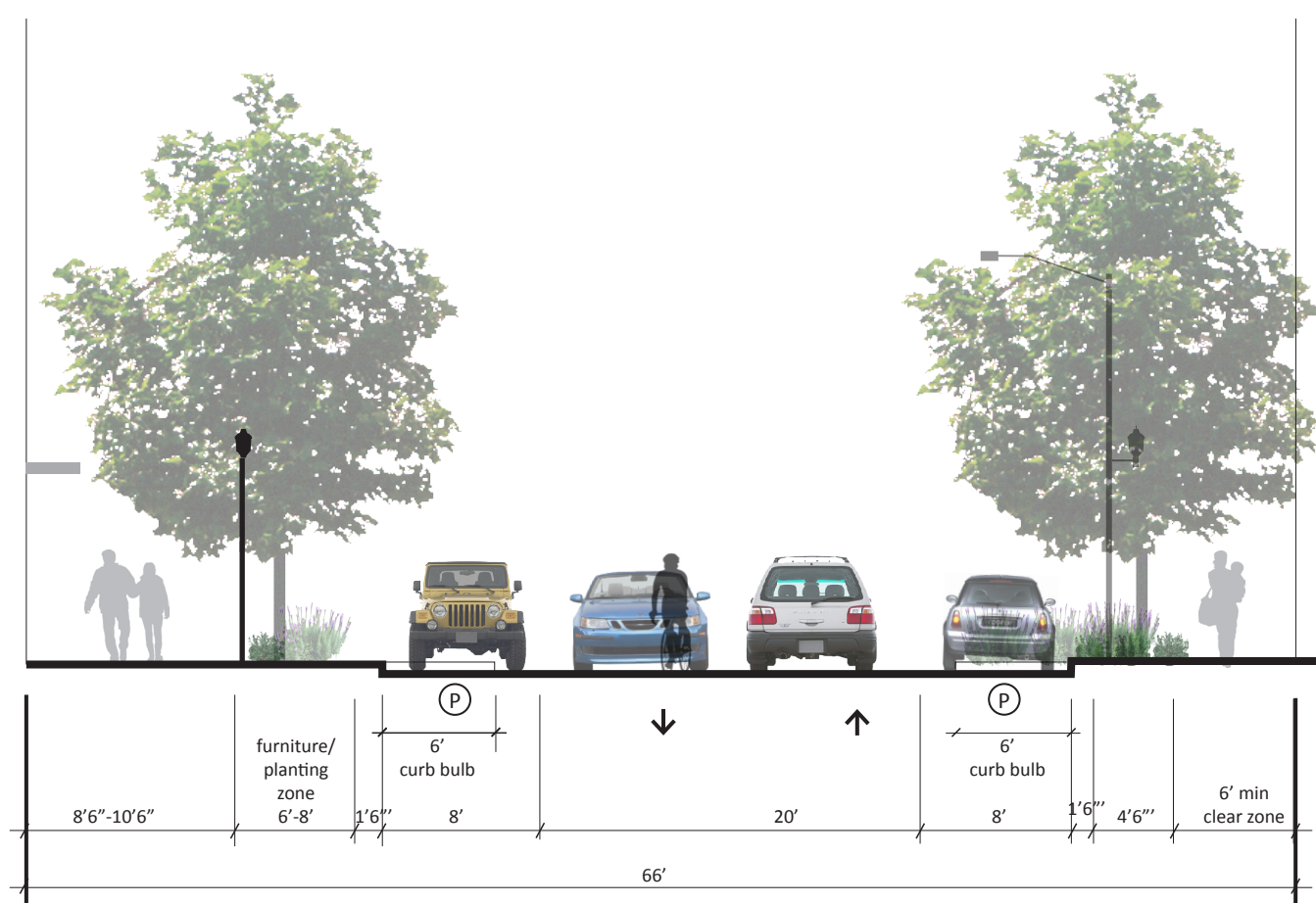


Typical Plan

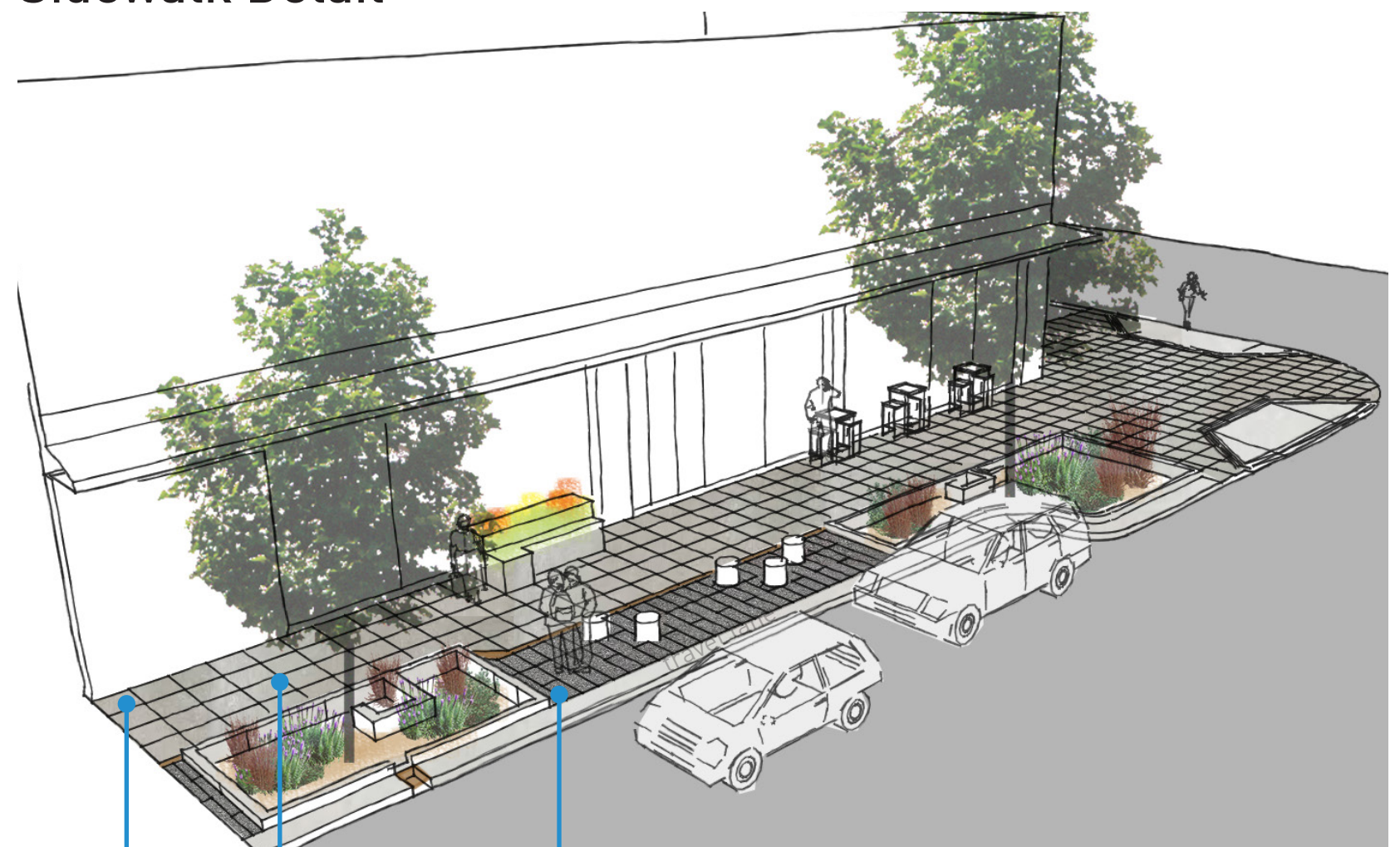
Existing Section



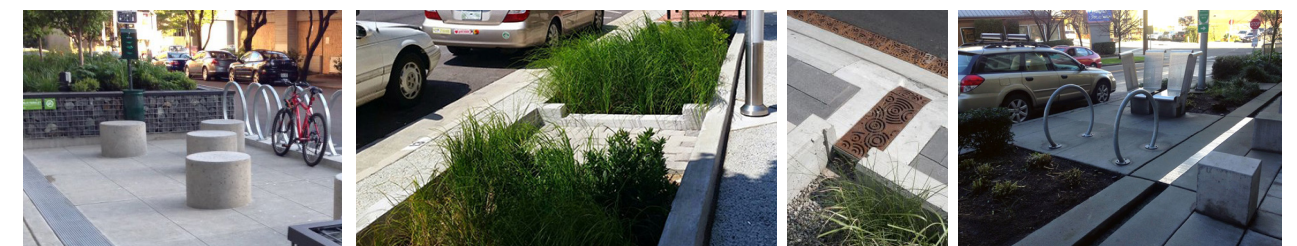
Proposed Section



Sidewalk Detail



landscape/furniture/vending zone (6'-8' on west side, 4'-5' on east side)



pedestrian clear zone (8'-10' on west side; 6' on east side)



frontage/vending zone where feasible (4'); maintain minimum 6' wide unobstructed pedestrian zone



What is a concept plan?

Features such as street lights, trees and landscaping, and street furniture can contribute to the character, comfort, and use of a street. Concept plans solidify a design vision for these elements.

Project goals

- 1. Increase comfort and safety for people walking, bicycling, and using transit.
- 2. Enhance views and neighborhood identity.
- 3. Support local businesses, maintain parking.

Một kế hoạch khái niệm “concept plan” là gì?

Đèn, cây xanh, phong cảnh, và vật dụng trang trí đường phố có thể đóng góp về đặc điểm, thoải mái, và sử dụng một đường phố. Kế hoạch khái niệm thiết kế vững chắc một tầm nhìn cho các yếu tố.

Mục tiêu của dự án

- 1. Gia tăng sự dễ chịu và an toàn cho người đi bộ, đi xe đạp, và đi xe điện.
- 2. Cải tiến các quang cảnh và đặc tính khu phố.
- 3. Ủng hộ các doanh nghiệp địa phương, duy trì bãi đậu xe.



Project Area

Khu Vực Dự
Án

Concept plans are voluntarily implemented through:

- Private redevelopment
- Grant-funded community projects
- City projects

Kế hoạch khái niệm được thực hiện qua:

- Tái phát triển tư nhân
- Dự án cộng đồng được tài trợ
- Dự án thành phố

Ongoing coordination with the following projects

- CID Judkins Park Neighborhood Greenway
- Curb ramp update project
- S Jackson St and 12th Ave S decorative crosswalks and parklet projects

OPCD Little Saigon
Action Plan



DRAFT LITTLE SAIGON STREET CONCEPT PLAN

DỰ THẢO KẾ HOẠCH KHÁI NIỆM CỦA ĐƯỜNG LITTLE SAIGON

chúng tôi đã
nghe nói

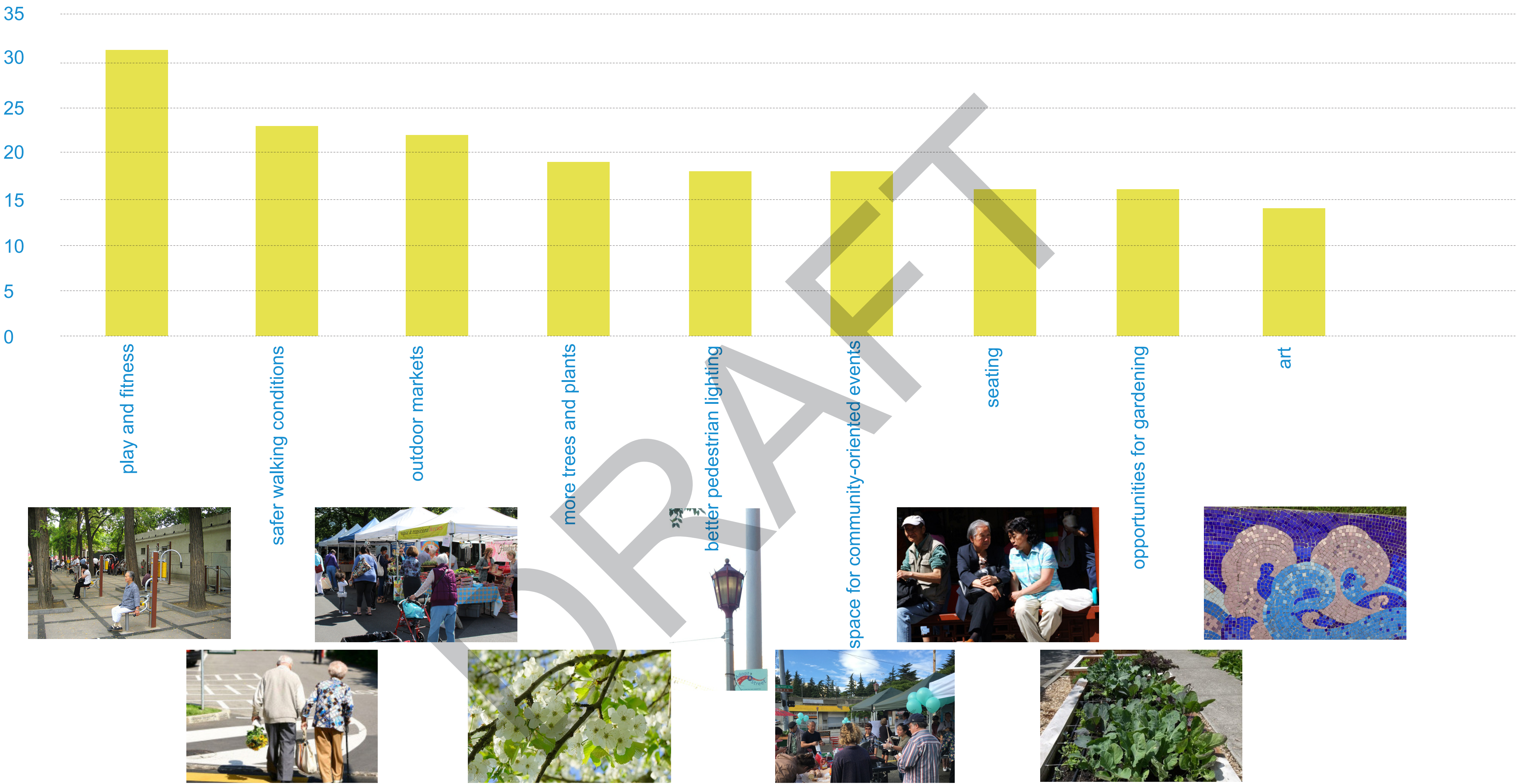
What we heard

- Concern about changing building and neighborhood character
- Need for supporting Vietnamese and Asian identity
- Need for more comfortable sidewalk environment and traffic calming to enable residents, and especially senior residents, to safely walk to their destinations and transit stops.
- Need for supporting businesses by encouraging visitors, cyclists, and commuters to stop, explore and shop in the neighborhood; and maintain parking
- Need for a signalized cross-walk at 10th Ave S and S Jackson St
- Need to improve signal operations at S Jackson St and 12th Ave S
- Need to improve interaction between far-side east-bound bus stop and bicycle lane on S Jackson S at Rainier Ave S
- Need to improve pedestrian visibility at S Jackson St and 12th Ave S streetcar station mid-block crosswalk
- Need for additional garbage and recycling bins and sustained ongoing routine street maintenance

SUMMARY OF 2016-2017 PUBLIC ENGAGEMENT EVENTS

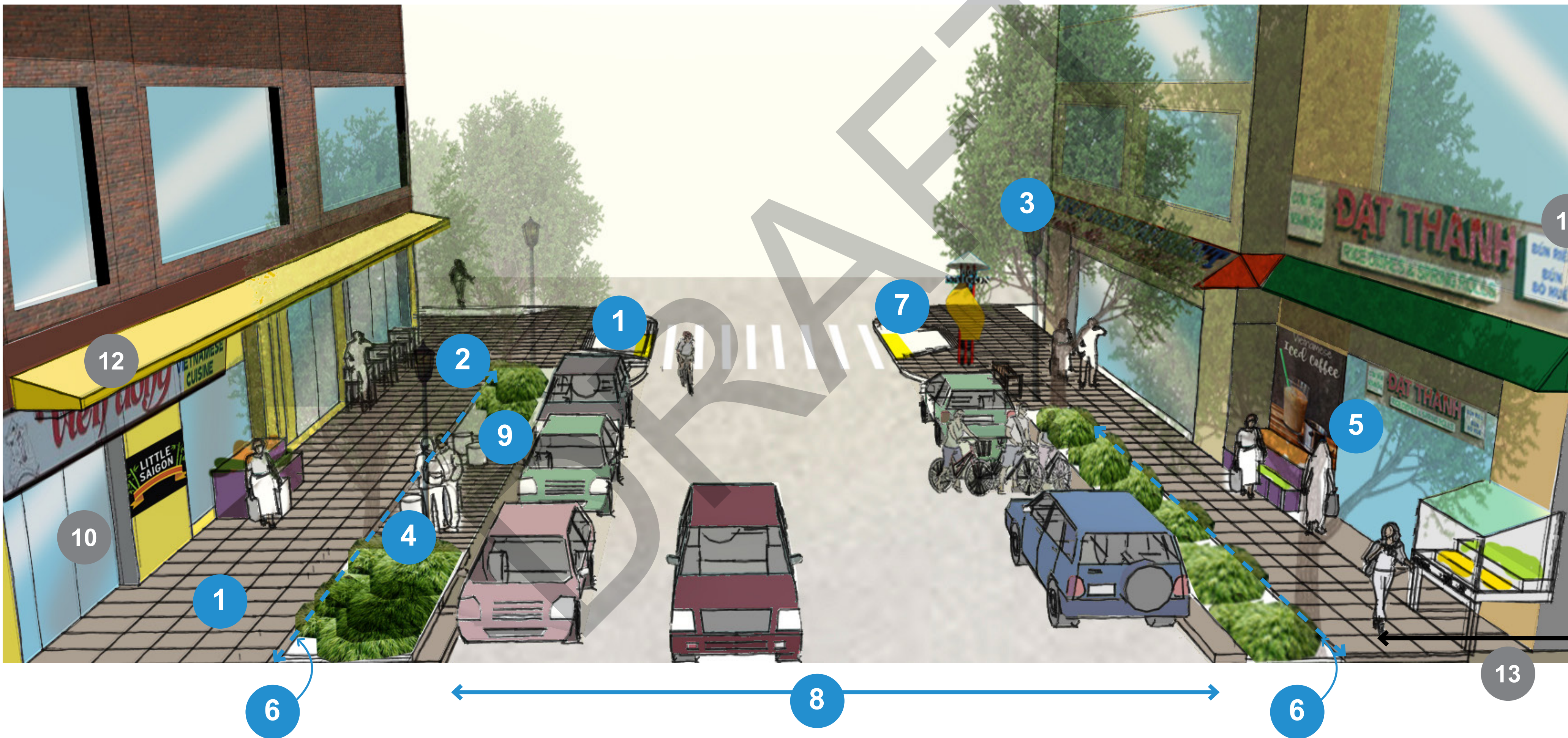
Neighborhood walks with Friends of Little Saigon
S Jackson St Connections project pop-up
Presentations to Friends of Little Saigon
SCIDPDA Open House in Little Saigon (15 people)
Celebrate Little Saigon (80 people)
Outreach to seniors at Interim CDA housing meeting (30 people)
Presentations and discussions at ISRD
SCIDPDA 2017 Kick-off Open House

Streetscape features supported by the community at Celebrate Little Saigon



DRAFT LITTLE SAIGON STREET CONCEPT PLAN

DỰ THẢO KẾ HOẠCH KHÁI NIỆM CỦA ĐƯỜNG LITTLE SAIGON



Summary of recommended street design features

● Recommendation for S King St, S Weller St, and 10th Ave S ● Recommendation for S Jackson St

- 1

Safe and comfortable streets
Where appropriate, widen sidewalks and incorporate curb bulbs at intersections, to shorten the pedestrian crossing distance, and encourage slower traffic speeds. ●

Explore opportunities for improving signal operations on S Jackson St at 12th Ave S. Pursue opportunities to implement a signalized pedestrian crosswalk at S Jackson and 10th Ave S. ●
- 2

Well-lit sidewalks
Encourage new development to install new pedestrian scale lighting. The red King style fixture seen west of I-5 is recommended. ● ●
- 3

Landscaping
Encourage continuous abundant low planting and trees along the sidewalk pedestrian clear zone to create a more comfortable walking environment. ● ●
- 4

Breaks in landscaping
Where appropriate, encourage intermittent breaks in the landscape zone to accommodate seating, exercise equipment, and gardening opportunities. ●
- 5

Active streets
Encourage new buildings to provide a 3' frontage zone for outdoor goods display and cafe-style seating. ● ●
- 6

Sidewalk Design
Encourage new developments to provide a border of stamped concrete along the curb or landscape zone to generate a unified district identity. Encourage new developments to incorporate markers and plaques which tell the story of the history of the site and it's context. ● ●


An example of a stamped concrete border design
- 7

Gateway Features
Support community efforts to develop gateway features at 12th Ave and S Jackson Street, 12th and Boren, 12th and Weller, S King and Rainier, and S King and I-5. ● ●
- 8

Space for community events ●
Design S King St (between 10th Ave S and 12th Ave S) to accommodate street closures for festivals, markets, and community events. Will need partnerships with adjacent private development to provide to water and electricity.
- 9

Street and transit amenities
Provide lean rails, trash and recycling receptacles, and wayfinding with local area information at transit stops. ● ●
- 10

Continuity and Cohesion
Encourage continuity of design elements in sidewalk design and pedestrian light fixtures to encourage continuity and cohesion in the public realm. ● ●

Summary of recommended building design features

Coordinate with the Office of Planning and Community Development and the International Special Review District on neighborhood design guidelines to guide new buildings to incorporate the following design elements and reinforce the character of Little Saigon.

- 11

Small and affordable retail
Encourage new buildings to provide a diverse and affordable mix of retail spaces to strengthen the existing street character.
- 12

Multilingual signage
Encourage businesses to install multilingual signage to reflect the context of the site and it's surroundings.
- 13

Weather protection
Encourage new development to provide weather protection along the building frontage to create a more comfortable environment.
- 14

Building Edge
(to be completed)
- 15

Mid-block pedestrian connections
Encourage new development to provide north-south mid-block pedestrian connections to improve walkability in an area with long east-west blocks and create spaces for community events. Entrances to mid-block connections should be highlighted through gateway elements, lighting, art, landscaping, materiality, or other features. Pedestrian connections should be well-lit through natural daylight and artistic lighting. Building edges along these connections should be active, with space for setting up market booths, multiple entrances, seating, and landscaping.