

# October 2021 Service Change: North Link Connections Mobility Project

Seattle Transit Advisory Board

August 26, 2021

# Project Introduction

Respond to changing mobility needs and integrate with 3 new Link light rail stations opening in north Seattle in October 2021

## Project Goals

- Improve mobility for historically un(der)served populations
- Equitably inform, engage, and empower current and potential customers traveling in the project area
- Deliver integrated service that responds to Link expansion and meets customer needs



# Service changes are the result of engagement with the community

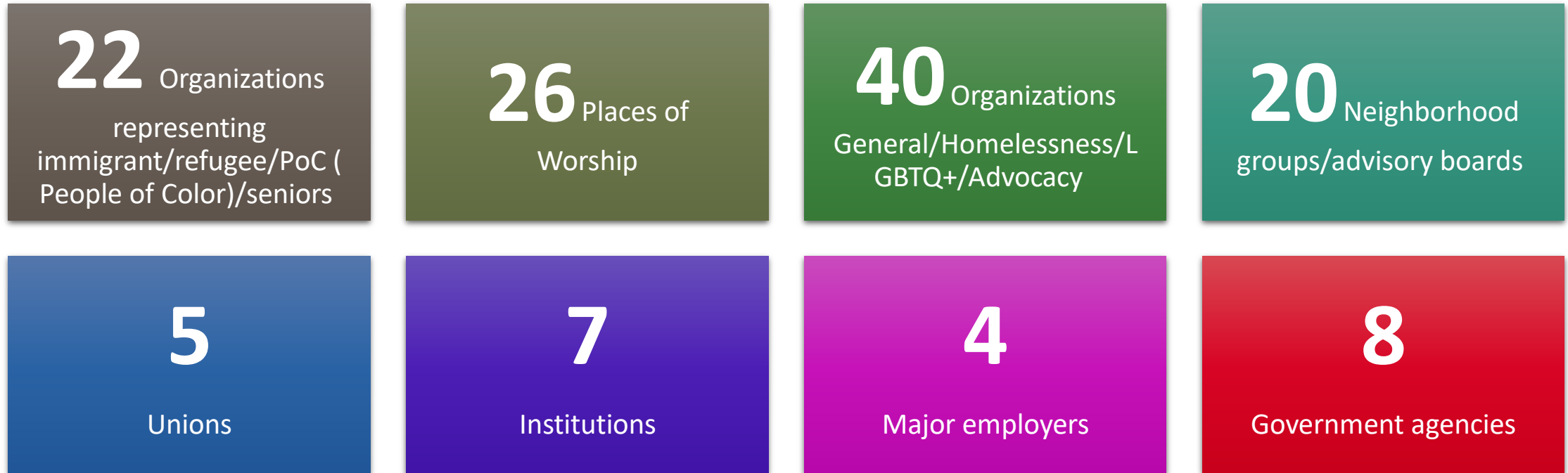
- To shape the proposal, Metro focused on historically un(der)served populations:
  - Relationship building in project area
  - Refining service ideas in partnership with community to build a better transit network
  - Communicate the service proposal and agency goals on equity to affected communities
  - Demonstrate how the proposal helps to advance equitable mobility outcomes



# Service Proposal is the result of engagement with the community



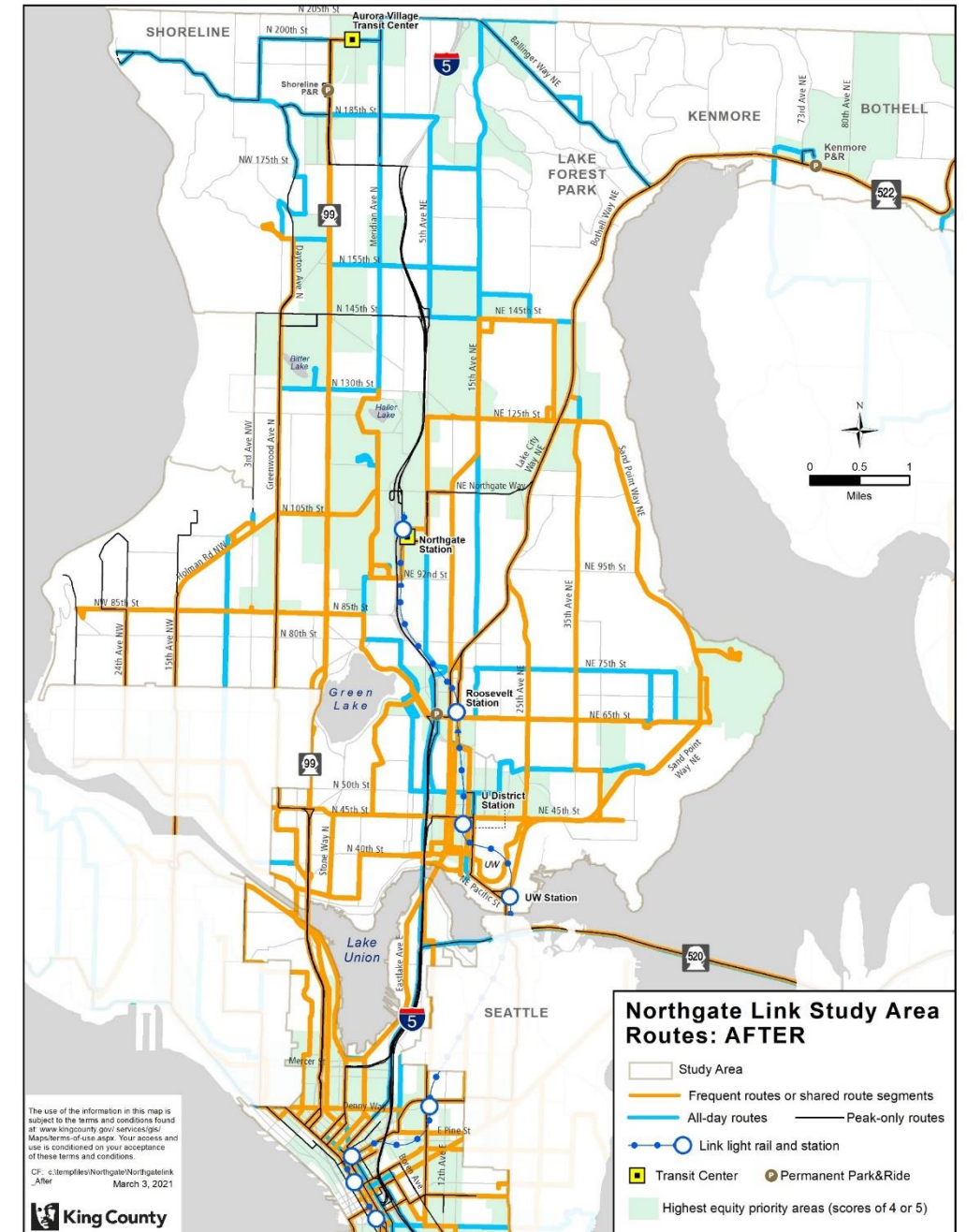
- Metro connected with **over 130** different organizations, including:



- Metro staff organized **80** stakeholder meetings, briefings, presentations, town halls, open houses

# Plan highlights

- 6 new routes, 22 revised routes, 11 replaced routes and 2 deleted routes
- 12 bus stop improvements around light rail stations to improve transfer environment
- Multiple frequent bus connections to all three new stations
- Nearly **150,000 annual service hours** from revised or deleted routes, **directly reinvested back into the project area** for:
  - New routes and connections
  - Increased frequency or span on some routes
  - More all-day service
- Link light rail provides better reliability and 4x the capacity of Route 41 which it replaces between Northgate and Downtown Seattle





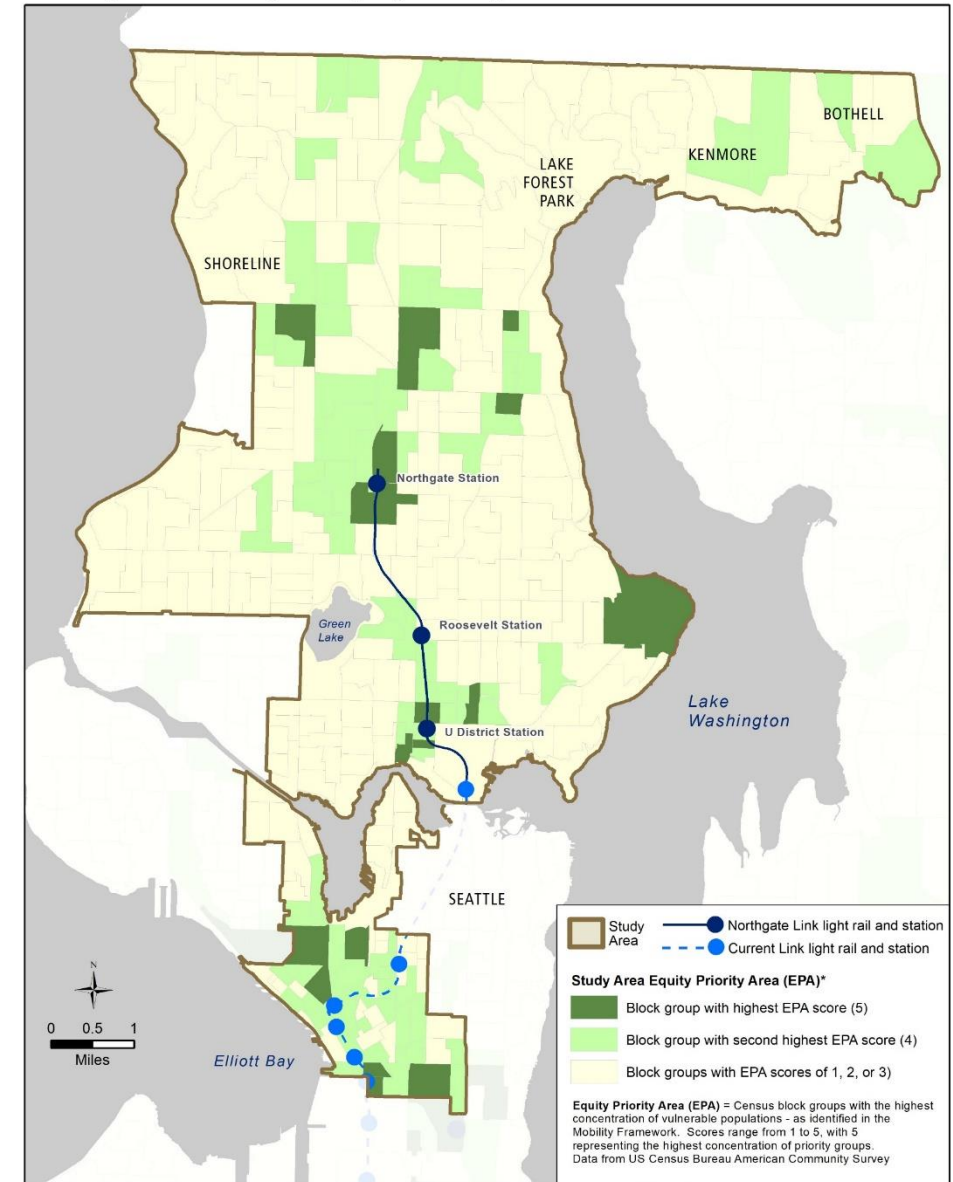
# Community Feedback Themes & Proposed Changes

Key Theme	Examples of proposed changes to respond to theme
Transfers should be between frequent services where possible, especially during midday, night, and weekends.	Increased span of service on Route 74; Weekend service added on Route 31; Revised connection of Route 75 between Northgate Station and Lake City; improved frequency on Shoreline local routes
Improve transit connections to/from major community assets and important destinations (Urban Centers, Hospitals, Universities, etc.).	New Routes 320 and 322 connecting First Hill and SLU, Routes 31 & 32 extension to Seattle Children's Hospital
Provide fast and reliable bus connections to Link light rail so travel times are better than or similar to what's experienced today.	Connecting Routes 301 and 304 to Northgate Station
Improve east-west and crosstown connections.	Routes 31 & 32 extension to Seattle Children's Hospital, Route 74 and New Route 79 in NE Seattle
Provide reliable service all-day and especially during the busiest times of day.	Connecting SR522 service to Link for improved travel time reliability
Provide transit connections that are safe, convenient, and easy to understand for all riders.	Improved connections at U-District Station via NE 43rd St

# North Link Equity Impact Review

- Proposal designed to reflect six key themes and respond to feedback from priority populations throughout engagement
- Focused on Equity Priority Areas, with the highest concentrations of priority populations within the project area
- **Equity Priority Area Outcomes:**
  - Have access to frequent transit in proposed network
  - Experience increase in transit relative to other area in the peak periods
  - Experience small reduction in service levels midday than areas with fewer priority populations

## Northgate Link Project Equity Priority Areas

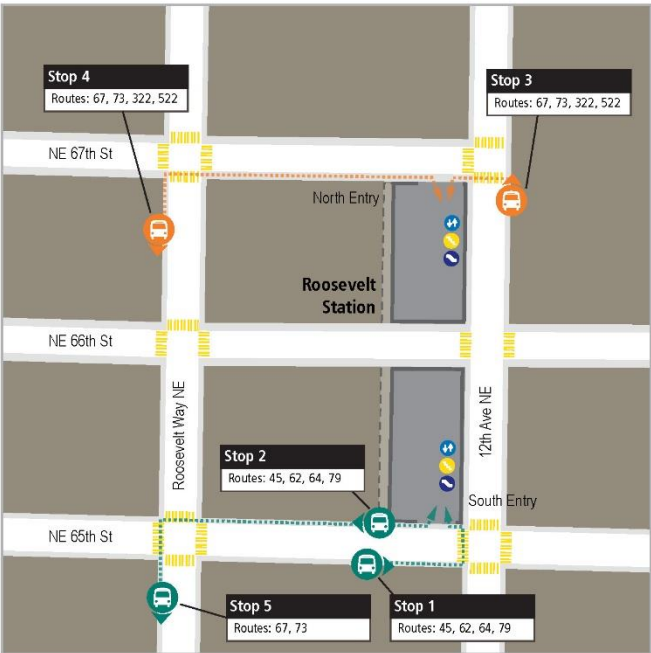


# Northgate, Roosevelt and U-District Station areas bus stop improvements

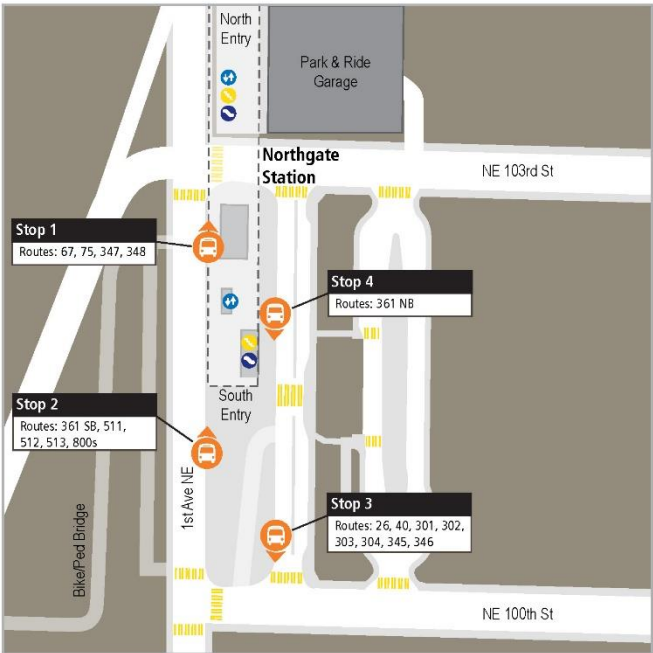
## U District Station DRAFT Station Area Map



## Roosevelt Station DRAFT Station Area Map



## Northgate Station DRAFT Station Area Map



**LEGEND**

Existing Stop

New Stop

Elevator

Escalator

Stairs

Transfer Route

Transfer Route

For illustrative purposes only. Map does not show final design of streets.  
Updated 12.10.2020



# Key Service Network Outcomes

Key Theme	Examples
Frequent connections at all new Link stations:	<ul style="list-style-type: none"> <li>• <b>Northgate Station:</b> Routes 40, 67, 75</li> <li>• <b>Roosevelt Station:</b> Routes 45, 62, 67, ST 522</li> <li>• <b>U District Station:</b> Routes 31/32, 44, 45, 49, 70, 75, 372</li> </ul>
East-West connections:	<ul style="list-style-type: none"> <li>• Frequent service between U District Station to Children's Hospital via NE 45<sup>th</sup> St on Routes 31 and 32</li> <li>• New all-day service on NE 55<sup>th</sup> and NE 75<sup>th</sup> St connecting to Link</li> </ul>
Improved peak connections:	<ul style="list-style-type: none"> <li>• <b>SR 522 corridor:</b> New route 320 to First Hill, Route 322 to South Lake Union; replace route 309 and 312</li> <li>• <b>Shoreline:</b> Route 301 and 304 reoriented to Northgate Station; New Route 302 to First Hill</li> </ul>
Improved frequency on local & all-day routes:	<ul style="list-style-type: none"> <li>• More peak service on local routes between Northgate Station, Haller Lake, Aurora Village, North City, and Ridgecrest on routes 331, 345, 346, 347, and 348 every 20 minutes</li> </ul>
Revised connections	<ul style="list-style-type: none"> <li>• Route 20 between U-District, Green Lake, Northgate and Lake City replaces Route 26 and part of Route 75</li> <li>• Route 75 replaces part of Route 41 between Northgate and Lake City</li> </ul>
Reduction in STBD investment	<ul style="list-style-type: none"> <li>• Approximately 25,000 Seattle-funded hours will remain</li> </ul>

# Conclusion

- Sound Transit is planning complementary ST Express changes, already approved by ST Board last year
- Metro will monitor and adjust service over time
- Consistent with COVID recovery, service will start at full levels on all-day routes, and at partial levels on peak routes
- Metro will continue to build relationship with community to communicate changes and future projects.



# Questions?

