



Route 40 Transit-Plus Multimodal Corridor Project

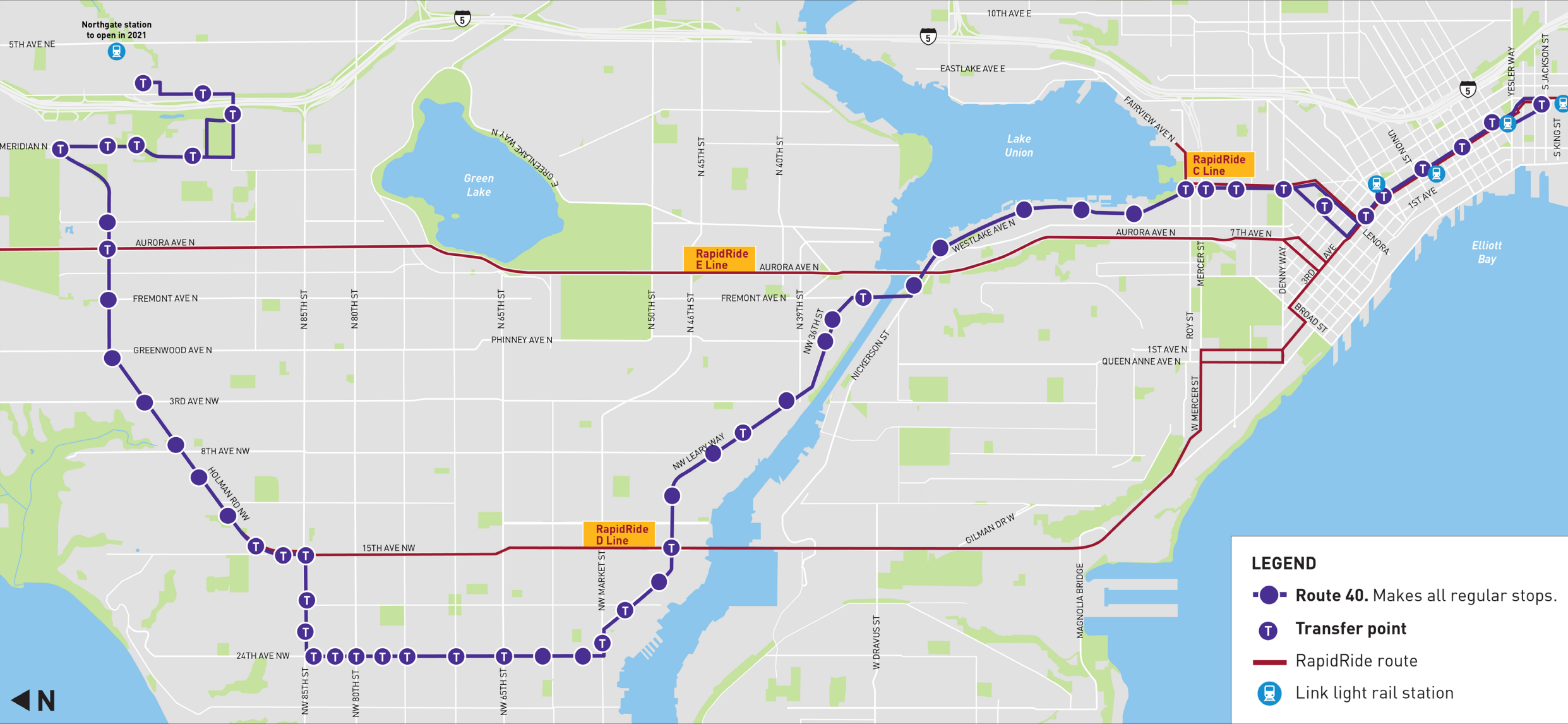
Project Update
March 2021



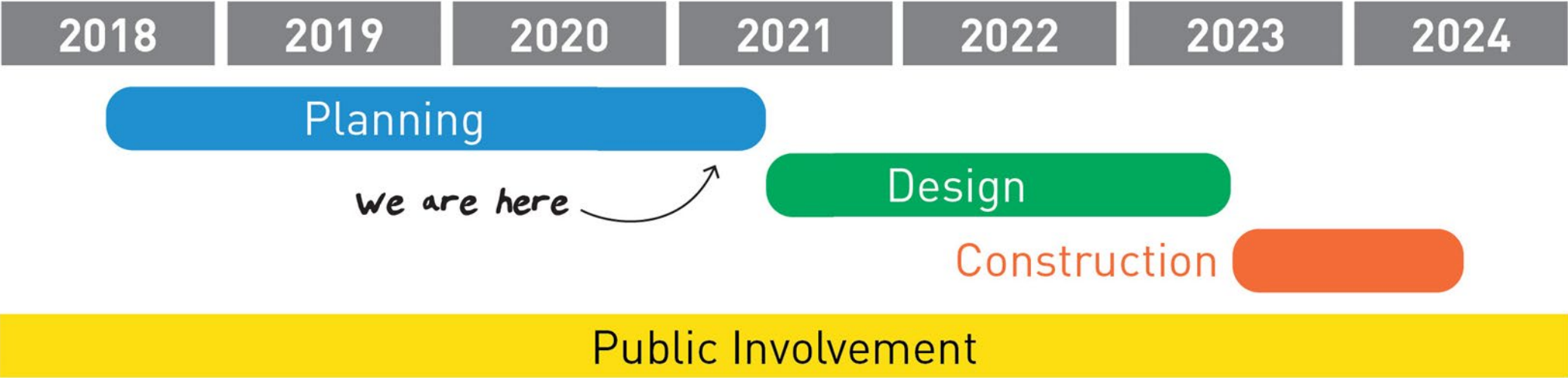
Corridor Overview



Route 40



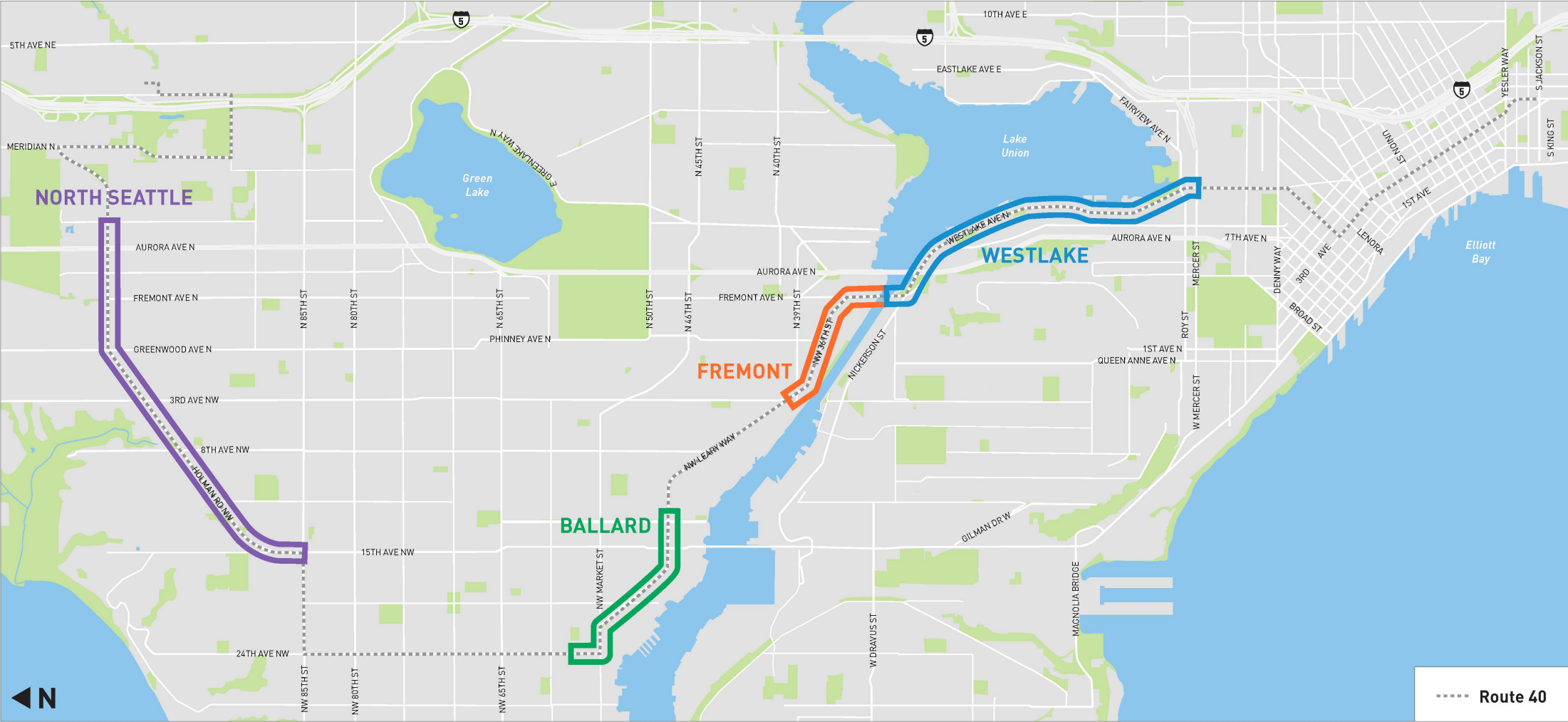
Project Schedule



Key Improvement Areas



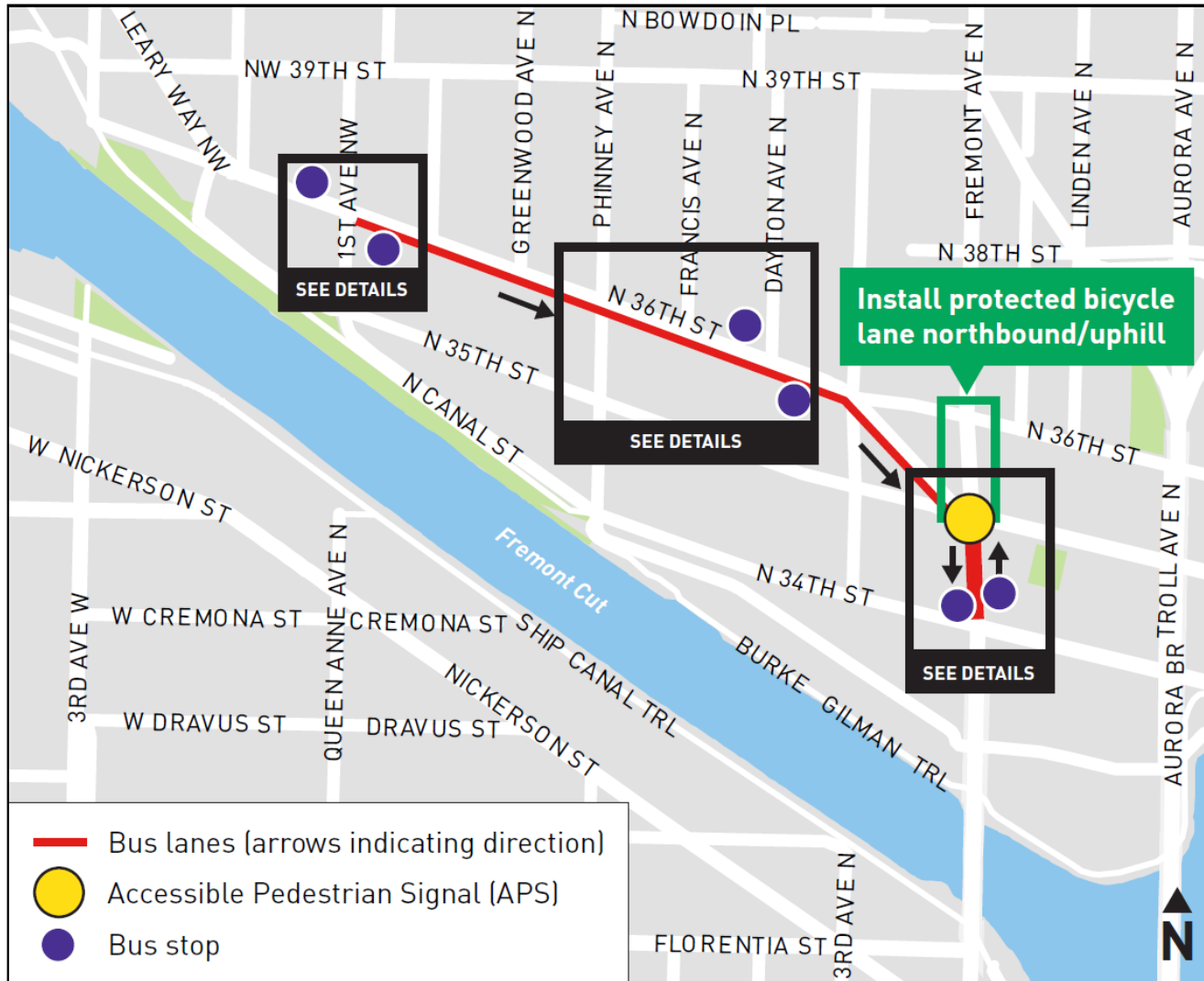
Route 40



Fremont Area Design Concepts



Route 40



Fremont Ave N

between N 34th St and N 35th St



Route 40

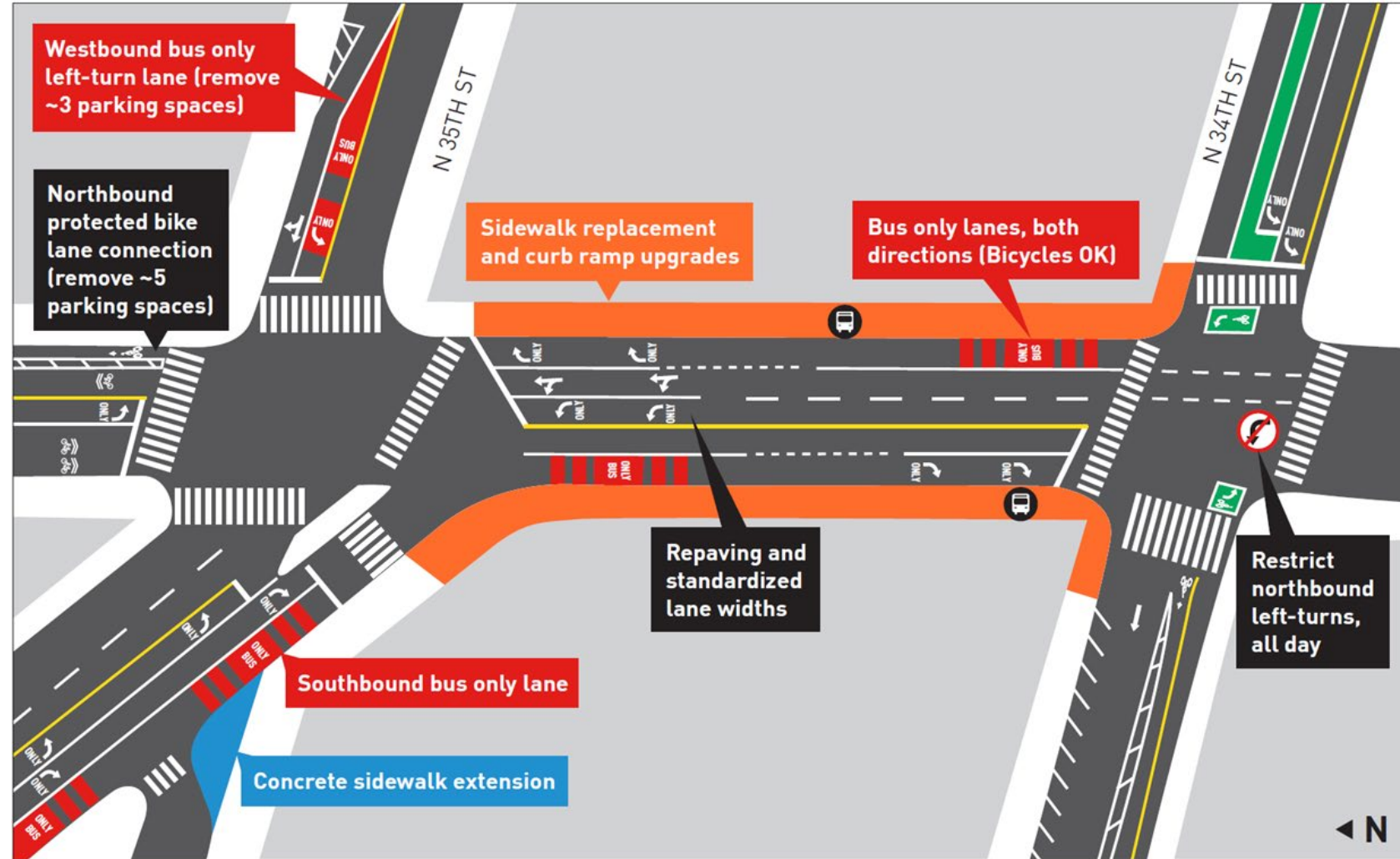


Proposed Changes

- Bus lanes in both directions and standardize lane widths
- Repaving and sidewalk reconstruction
- Westbound left-turn pocket on N 35th St for transit only
- Restrict northbound left-turns from Fremont Ave N to N 34th St all times of day

Expected Benefits

- Reduced transit travel times for multiple bus routes
- Improved access and safety for people walking and biking



N 36th St Bus Lane

between 1st Ave N to Fremont Ave N



Route 40

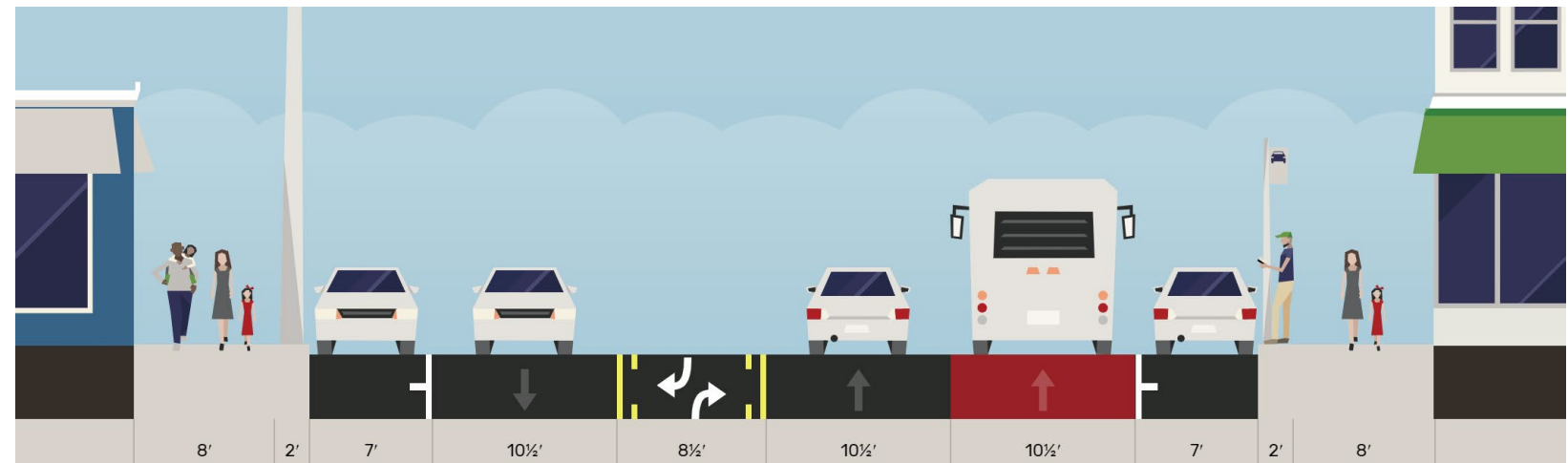
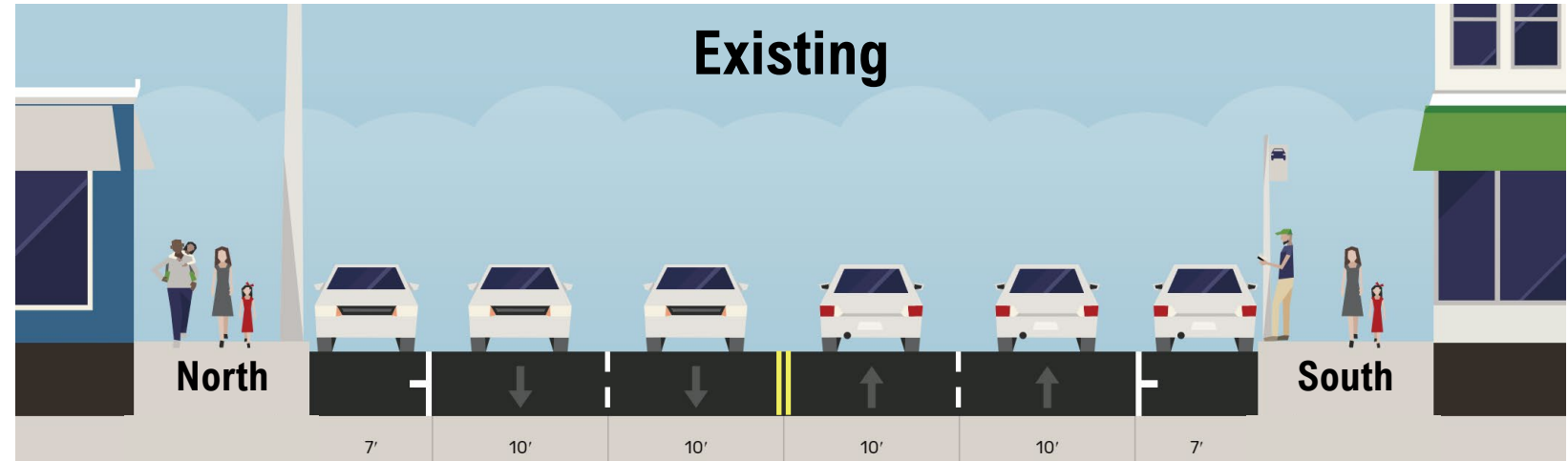


Proposed Changes

- Southbound bus lane
- Narrow two-way center turn lane
- Wider travel lanes

Expected Benefits

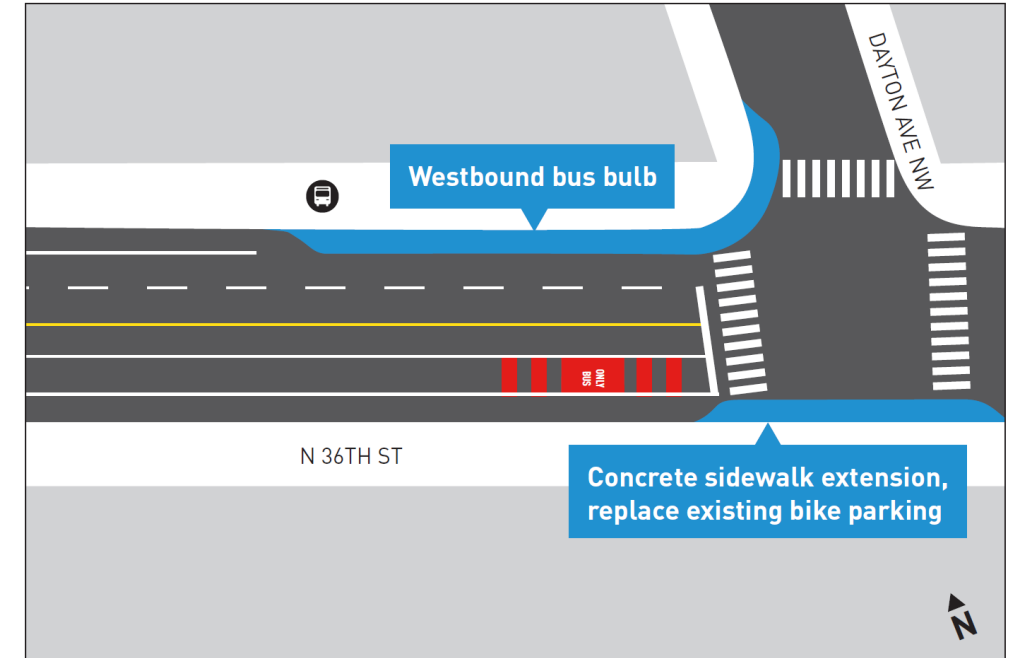
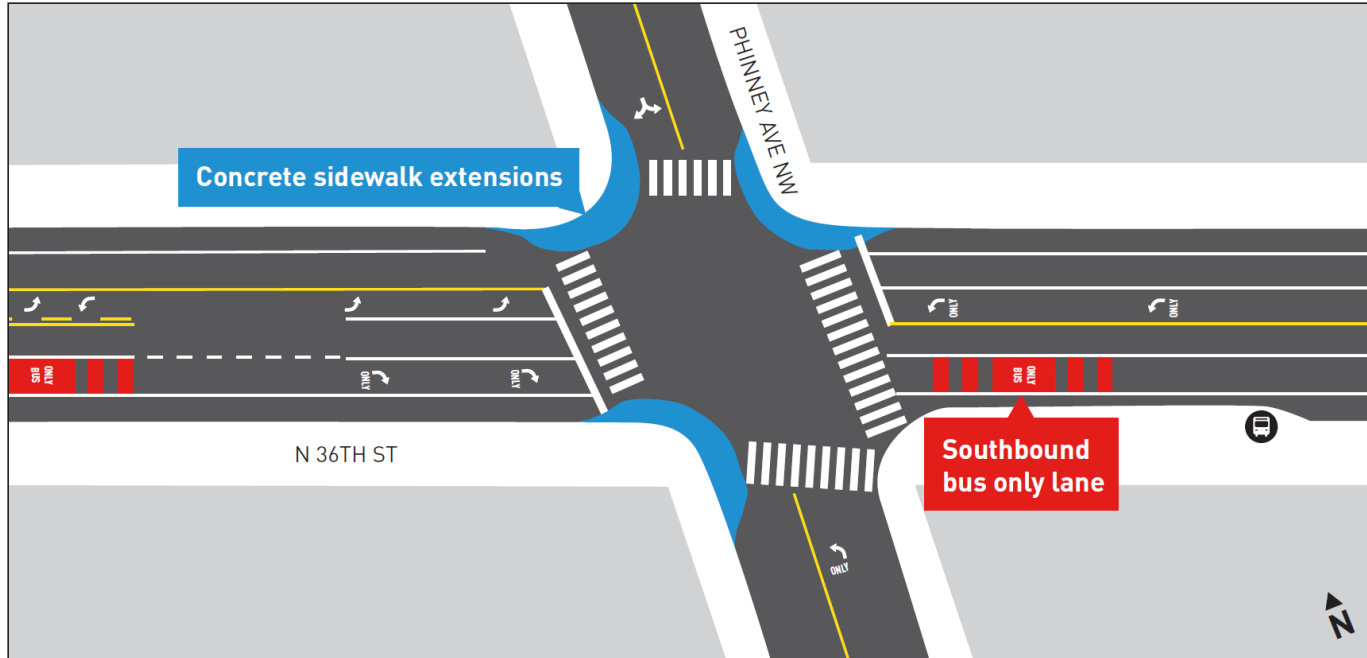
- Reduced transit travel times and improved reliability southbound
- Lane widths closer to standards for all users
- Designated space for left turns



N 36th St at Phinney Ave & Dayton Ave



Route 40



Proposed Changes

- Curb bulbs at Phinney Ave and Dayton Ave
- Bus boarding bulb for westbound stop at Dayton Ave

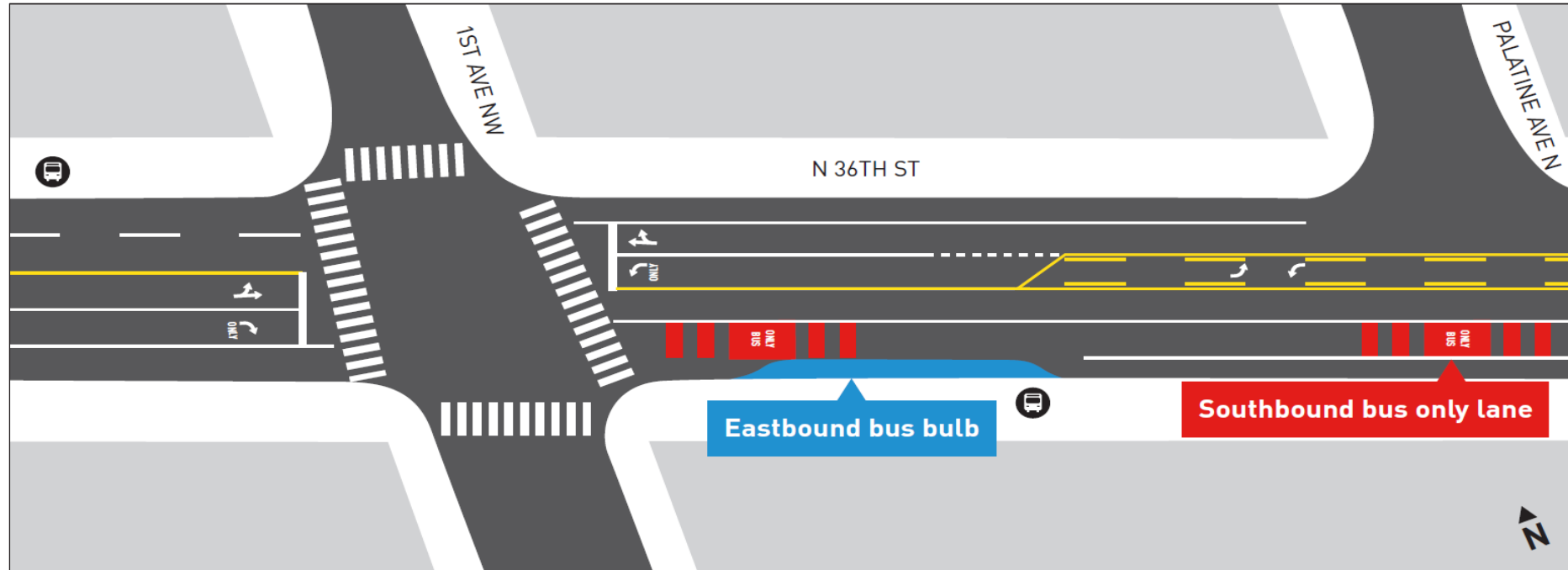
Expected Benefits

- Reduced transit travel times
- Improved boarding and alighting operations
- Shorter pedestrian crossing distances

N 36th St & 1st Ave



Route 40



Proposed Changes

- Bus boarding bulb for eastbound stop at 1st Ave

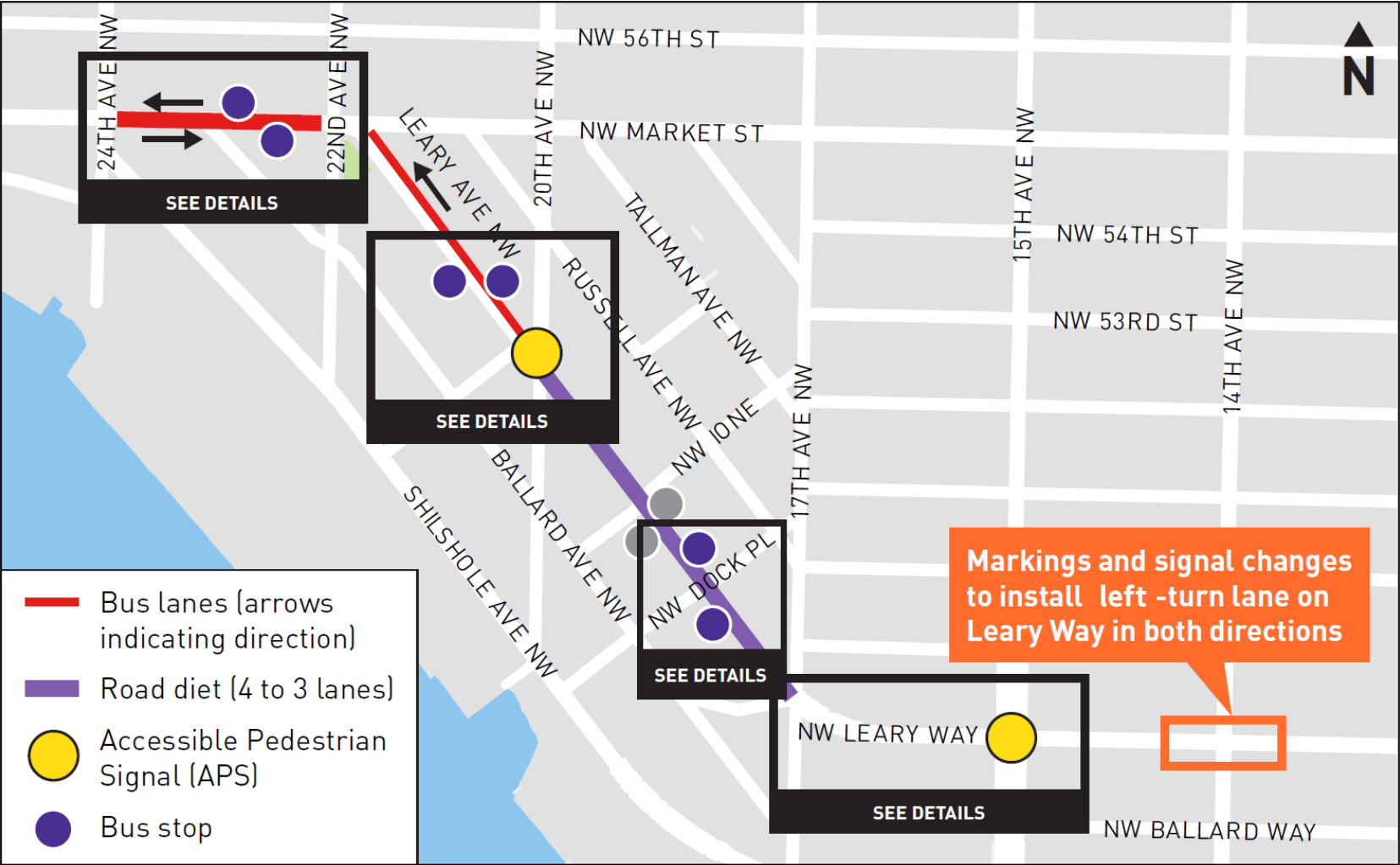
Expected Benefits

- Reduced transit travel times
- Improved boarding and alighting operations

Ballard Area Design Concepts



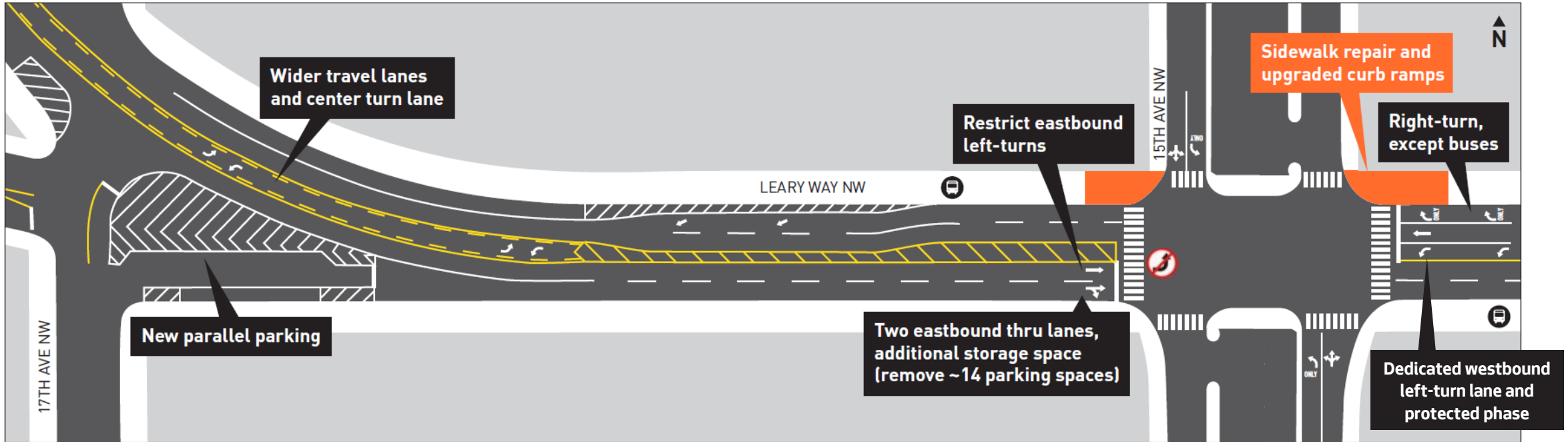
Route 40



Leary Way & 15th Ave



Route 40



Proposed Changes

- Channelization modifications to improve operations on Leary Way
- Sidewalk repair, curb ramp upgrades, and Accessible Pedestrian Signal (APS) at 15th Ave

Expected Benefits

- Reduced transit travel times
- Improved access to transit for pedestrians

Leary Ave Road Diet

between 20th Ave NW and 15th Ave NW



Route 40

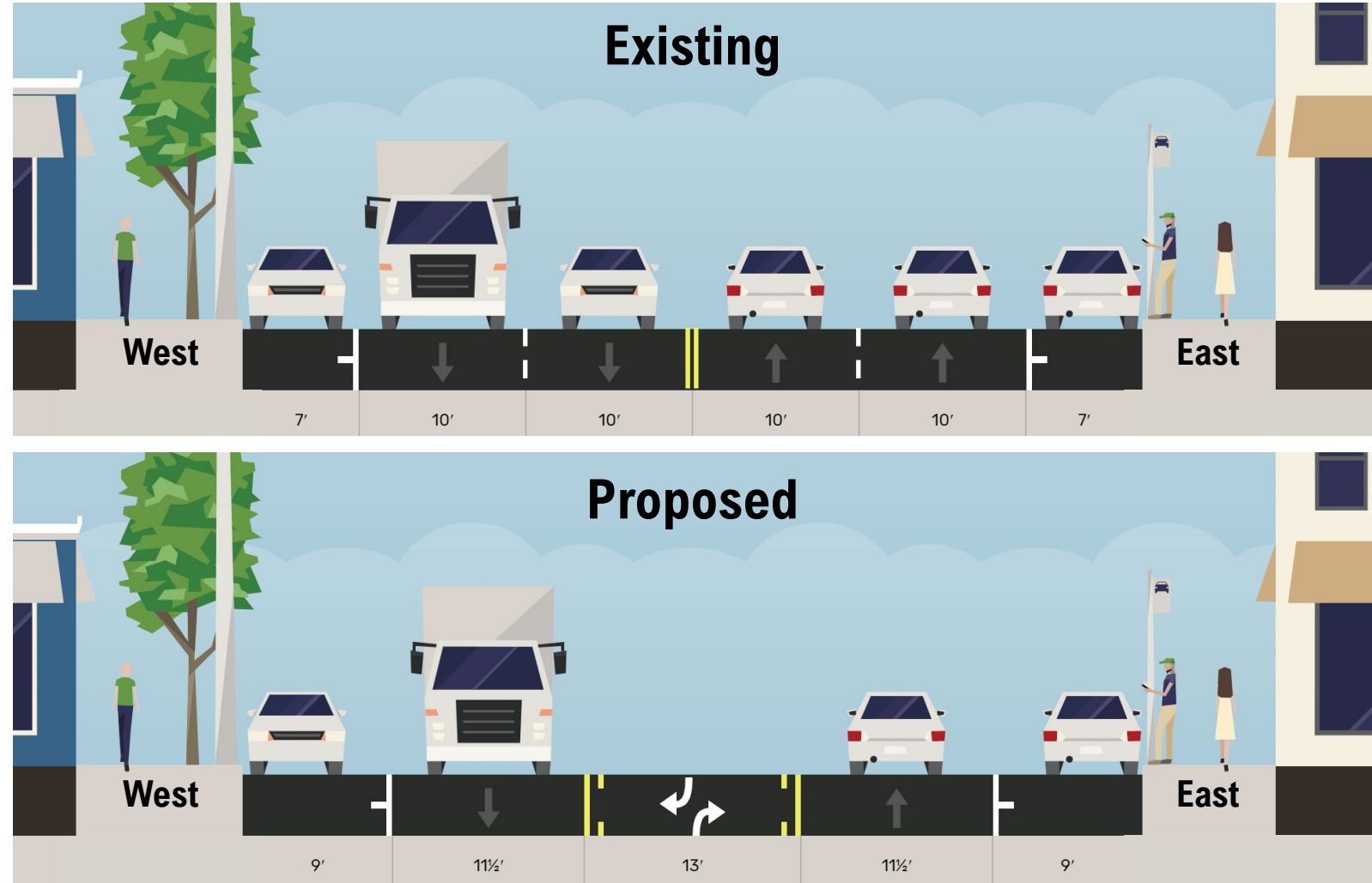


Proposed Changes

- Reduce total number of travel lanes (from 4 to 3)
- Two-way center turn lane
- Wider travel lanes and parking lanes

Expected Benefits

- Standard lane widths for all vehicles
- Designated space for left turns



Leary Ave NW at NW Dock PI



Route 40

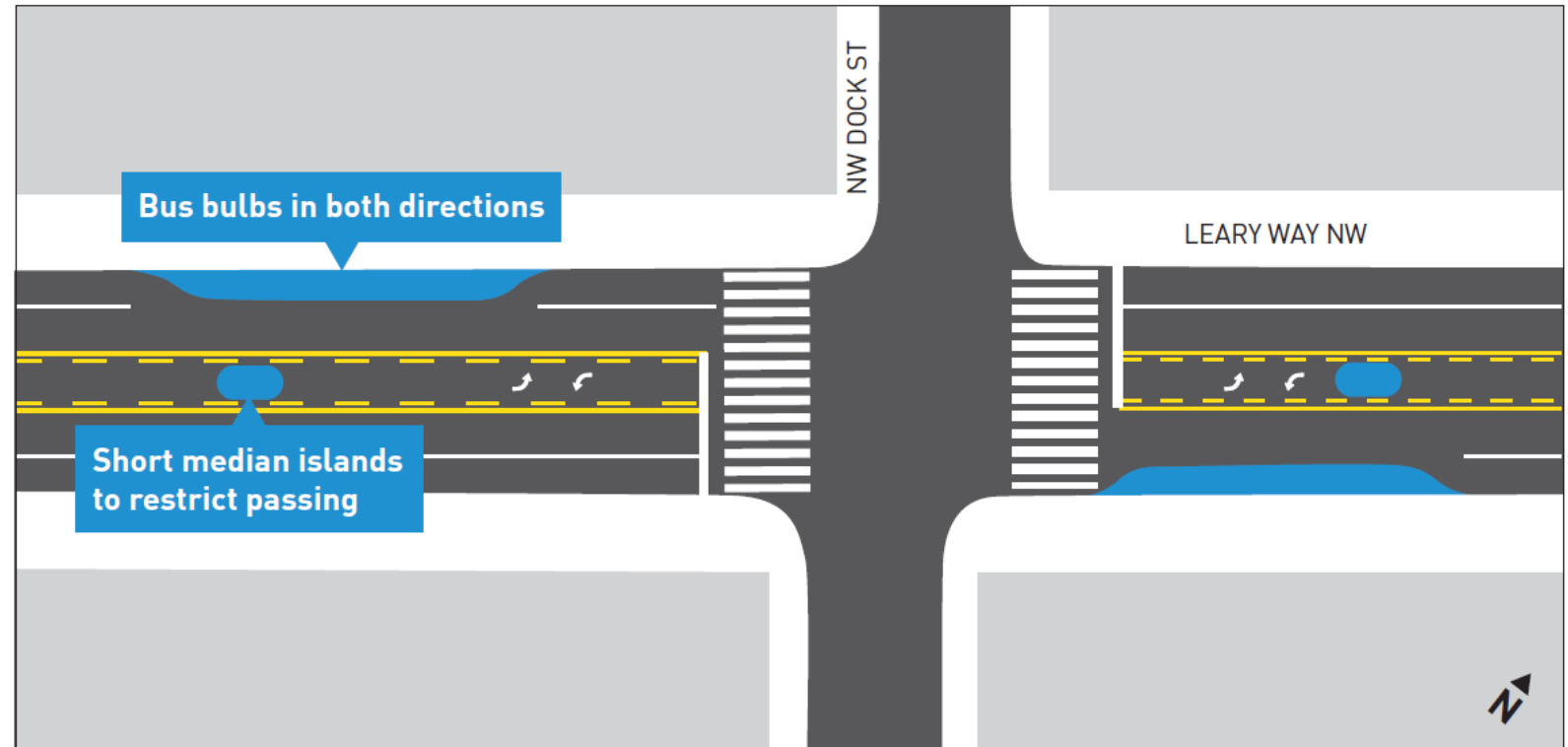


Proposed Changes

- Relocate Ione PI bus stops to signalized crossing at Dock PI (Neighborhood Greenway)
- Bus bulbs in both directions
- Small median islands to restrict passing behavior

Expected Benefits

- Reduced transit travel times in both directions
- Improved access and safety for people walking and biking

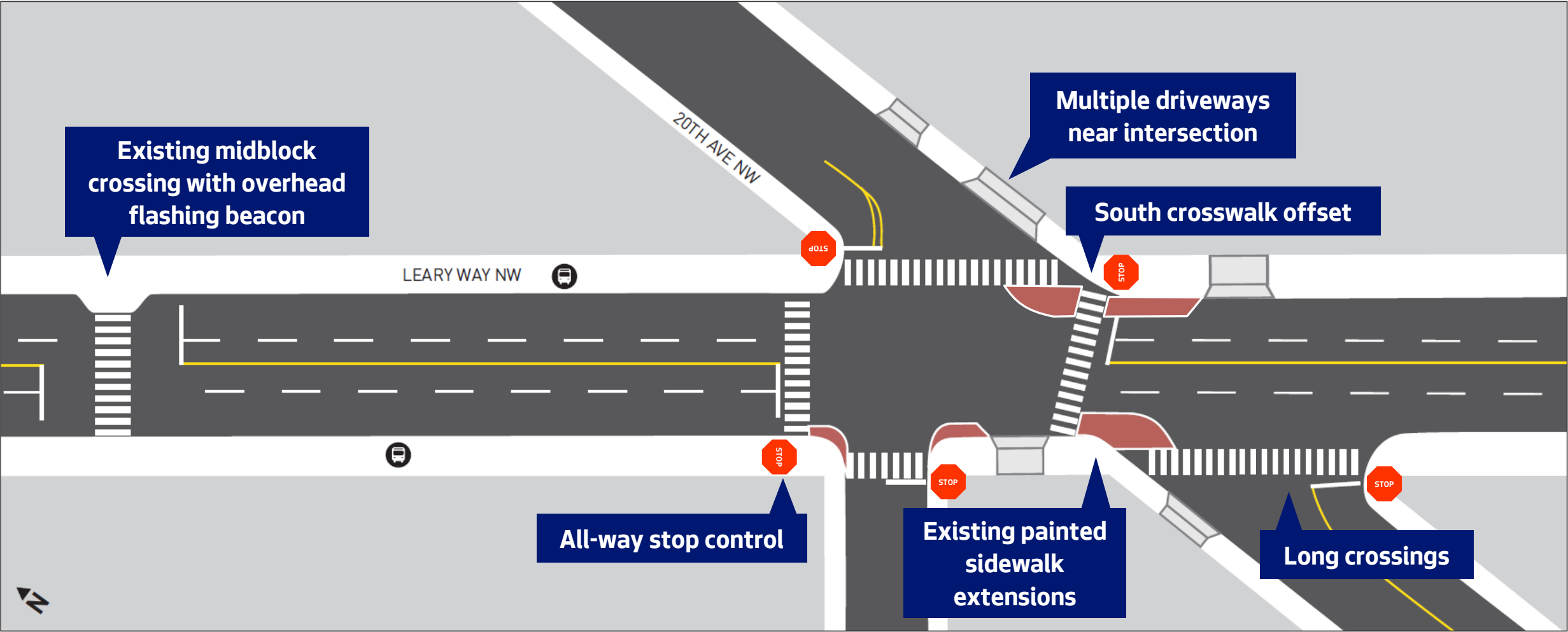


Leary Ave NW & 20th Ave NW (Existing)



Route 40





Leary Ave NW at 20th Ave NW & Vernon Pl



Route 40

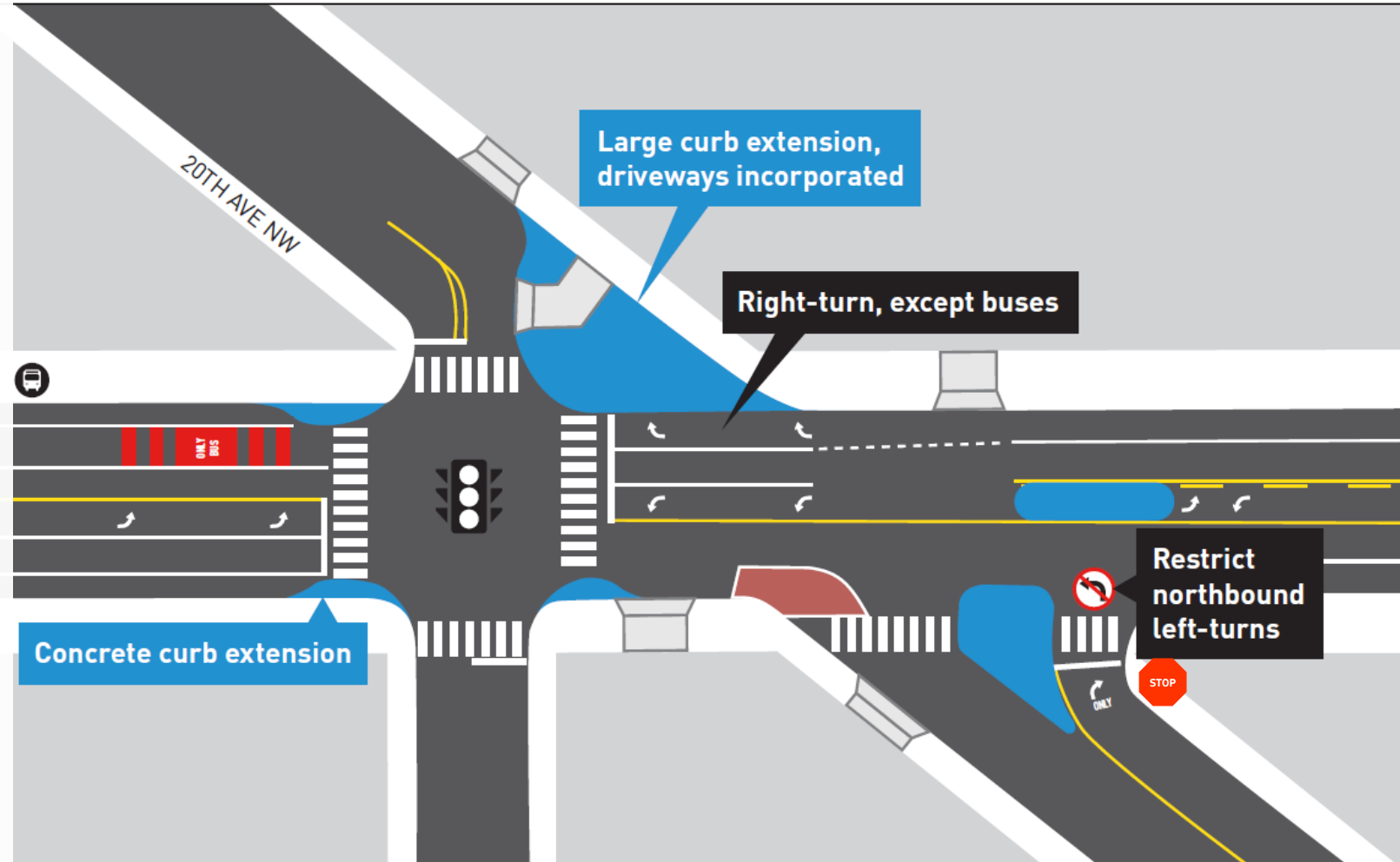


Proposed Changes

- Install traffic signal
- Construct concrete curb bulbs
- Relocate south crosswalk
- Restrict northbound 20th Ave NW to right-out only and construct median islands

Expected Benefits

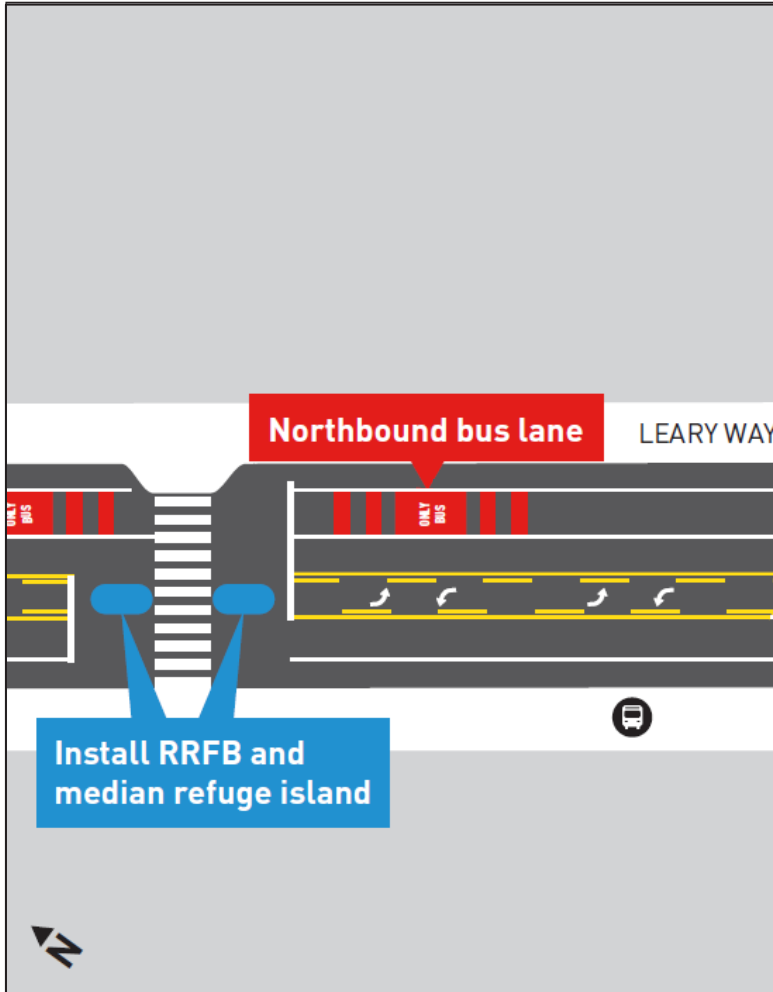
- Reduced travel times on Leary Ave NW
- Clarified vehicle movements and fewer turning conflicts
- Improved pedestrian crossings



Leary Ave NW at Midblock Crossing



Route 40



Proposed Changes

- Install northbound bus only lane
- Upgrade to Rectangular Rapid Flashing Beacon (RRFB)
- Construct median island in proposed center turn lane

Expected Benefits

- Improved transit travel time
- Reduced number of travel lanes and pedestrian exposure to traffic
- Improved visibility of pedestrians waiting to cross
- Median island allows for two-stage crossing

Leary Ave Bus Lane

between NW Market St and 20th Ave NW



Route 40

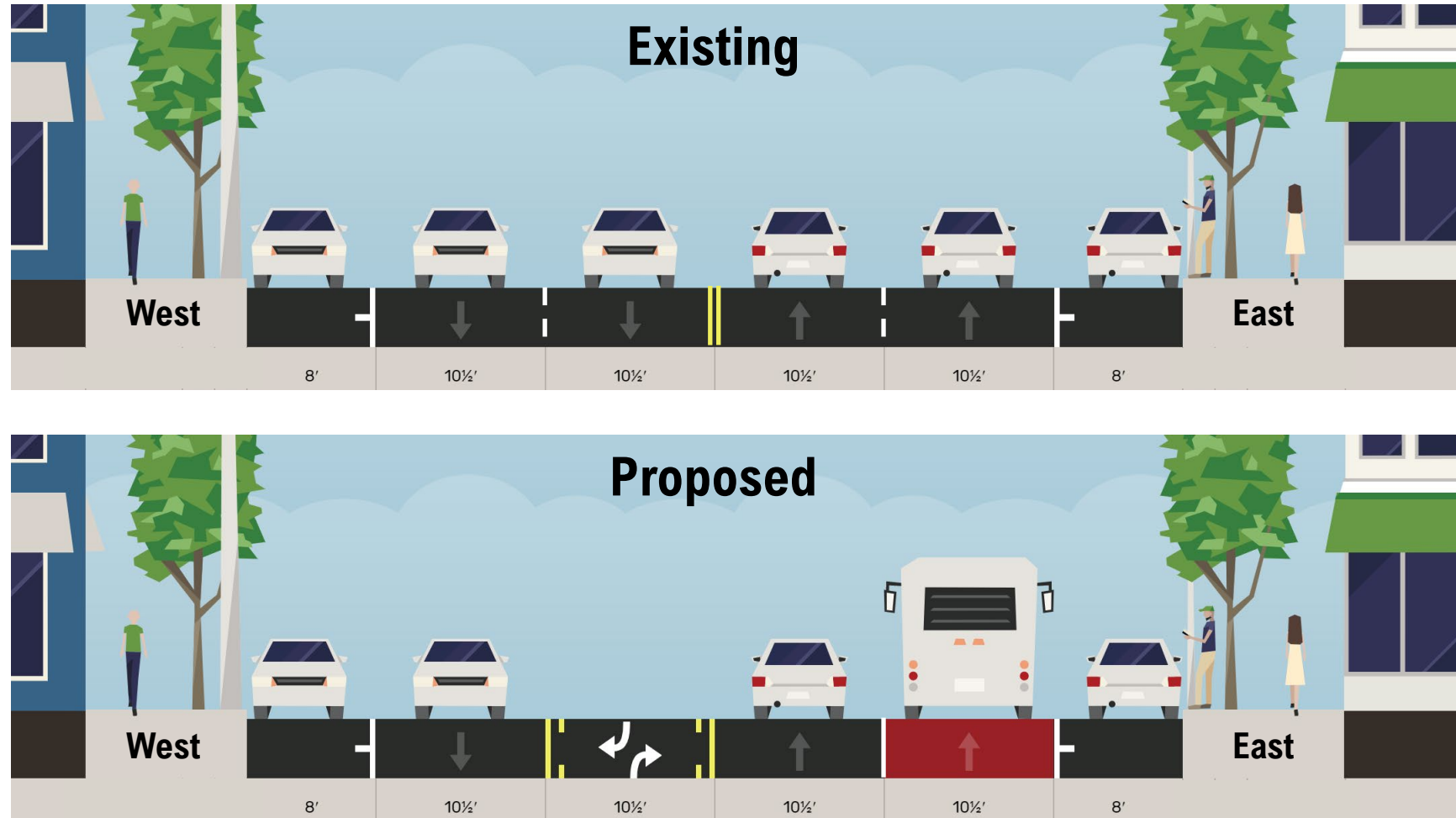


Proposed Changes

- Northbound bus lane
- Two-way center turn lane

Expected Benefits

- Reduced transit travel time for northbound buses
- Designated space for left turns
- Supports improvement of existing midblock crossing

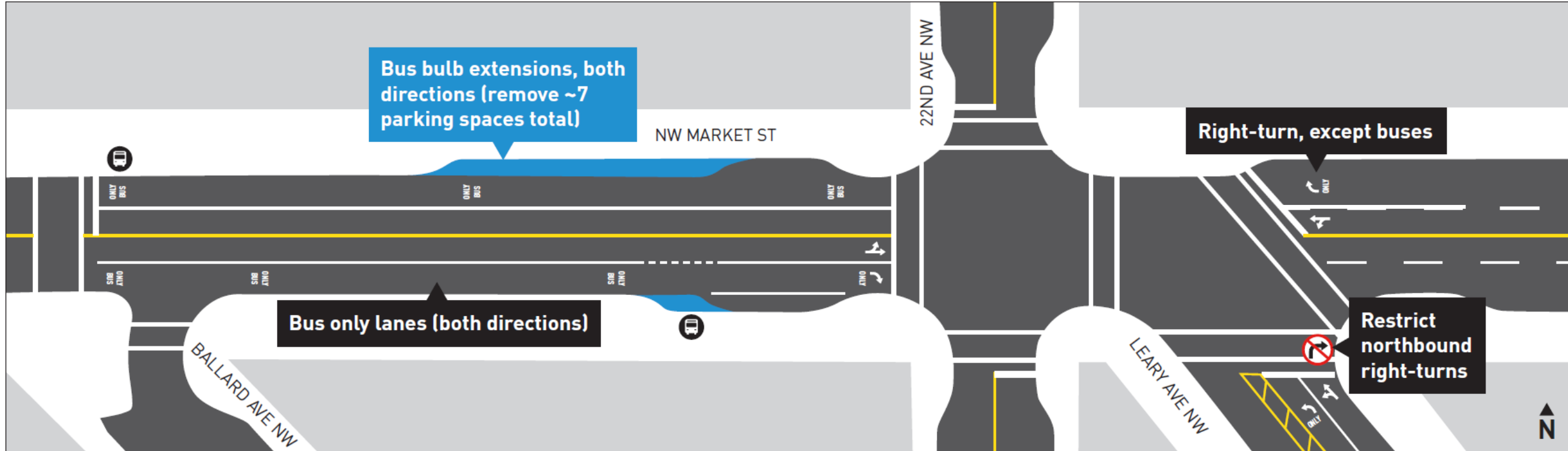


NW Market St Bus Lanes

between 24th Ave NW and 22nd Ave NW



Route 40



Proposed Changes

- Bus lanes in both directions
- Extend bus bulbs to accommodate three buses

Expected Benefits

- Reduced transit travel times
- Improved boarding and alighting operations



Route 40



Comments/Questions?

Route40@seattle.gov

<http://www.seattle.gov/transportation/route40>