

# PINEHURST WAY NE AND NE 117TH ST

Spring 2018

## PROJECT DESCRIPTION

This project will redesign the intersection at Pinehurst Way NE and NE 117th St and enhance pedestrian and driver safety, predictability, and accessibility. Pinehurst Way NE and NE 117th St contains two north-south arterials which are crossed by an east-west non-arterial, creating a complex junction with three intersections.

Many people walk here, including kids at Hazel Wolf K-8 School. NE 117th St is also a future neighborhood greenway route that connects people walking and biking between Olympic Hills, Pinehurst, Maple Leaf, and the future Northgate Link light rail station.

We'll focus on the following, to guide outreach and design:

- Increase safety and predictability for all travelers
- Update intersections and enhance pedestrian crossings
- Reduce the number of collisions
- Establish a safer connection to Hazel Wolf K-8 by installing a new traffic signal
- Create a connection to the future neighborhood greenways and the future Northgate Link light rail station

## PROJECT FEATURES

- Install new traffic signals to improve pedestrian and bike crossings and improve traffic flow on Pinehurst Way NE and 15th Ave NE
- Re-configure intersection layout, install marked crosswalks and medians to provide safe and comfortable crossings
- Restrict turning movements on and off NE 117th St to reduce congestion and potential conflicts

## PROJECT BACKGROUND

Upgrades to Pinehurst Way NE and NE 117th St were identified by Seattle residents as part of the Your Voice, Your Choice: Parks & Streets program. Your Voice, Your Choice is a resident-driven budgeting initiative that asks Seattle residents to decide how the City should prioritize smaller-scale park and street improvements. Once identified by residents, we studied this location and our traffic data showed a concerning crash history that we're working to improve – we call these “high collision locations” and put resources toward improving them.

Once designs are finalized they will be constructed through a partnership between our Neighborhood Greenway, Safe Routes to School, and Vision Zero programs. To achieve the goals of the project, we will focus on the safety and well-being of our residents and the vibrancy of our neighborhoods.

## PROJECT GOALS AND OUTREACH

Our primary goals are to **improve safety and mobility** along the corridor, so that travelers may have a safer and more comfortable experience.

We are in an early phase of outreach, and designs have not been finalized.

Outreach for Your Voice, Your Choice launched in 2017 and continues in 2018 as we work with neighbors where projects were selected, to keep everyone informed of project and construction schedules.

Learn more on our webpage or by contacting us using the information below.

These projects are funded by the 9-year Levy to Move Seattle, approved by voters in 2015. Learn more about the levy at [www.seattle.gov/LevytoMoveSeattle](http://www.seattle.gov/LevytoMoveSeattle).

## PROJECT INFORMATION & CONTACT

### Your Voice, Your Choice Projects

[www.seattle.gov/transportation/YVYC-District-5.htm](http://www.seattle.gov/transportation/YVYC-District-5.htm)  
[yvyc\\_projects@seattle.gov](mailto:yvyc_projects@seattle.gov) | (206) 316-2549



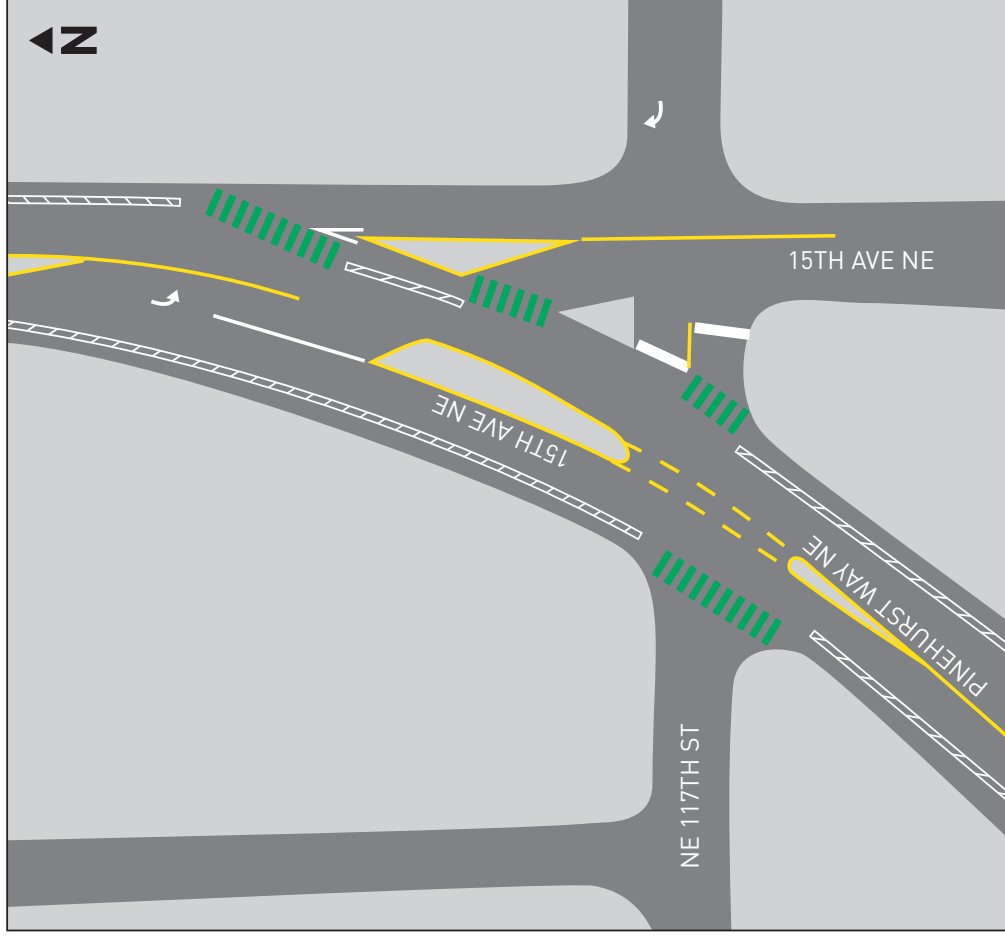
**Seattle**  
Department of  
Transportation

The Levy to

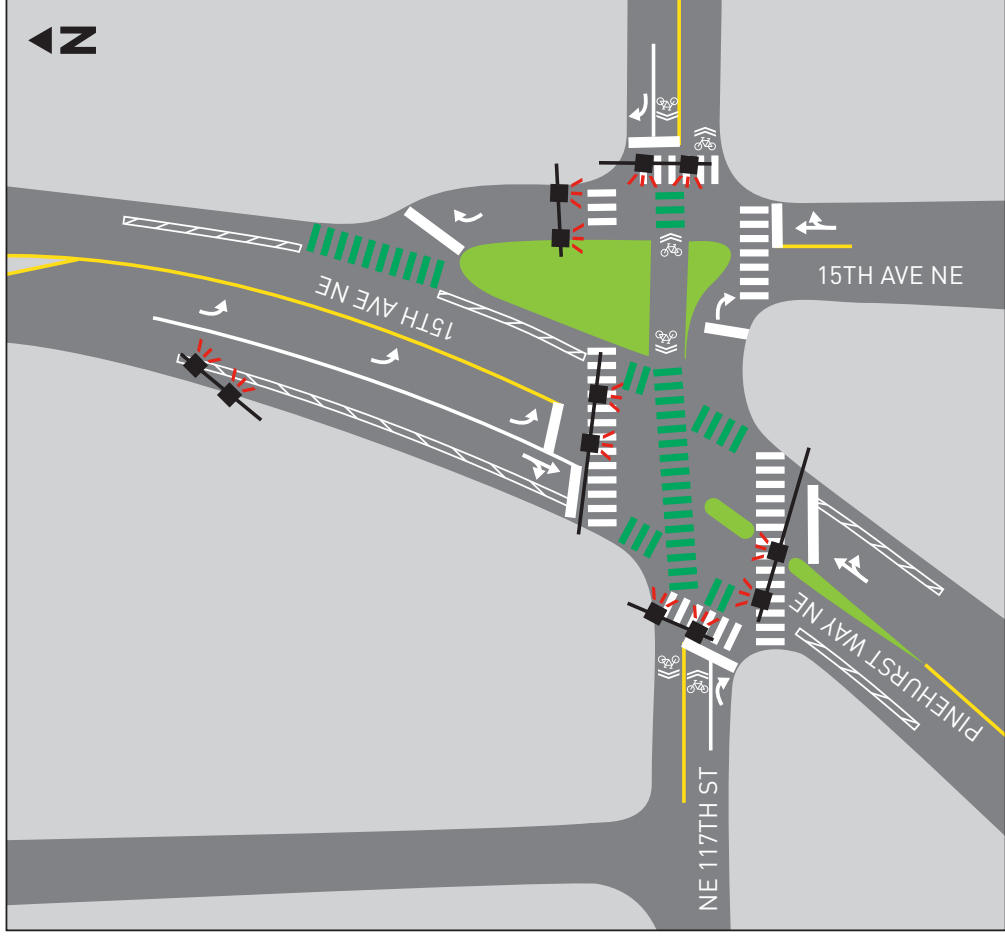
**MOVE SEATTLE**



# PINEHURST WAY NE AND NE 117TH ST



Existing – what's there today



Design concept – what do you think?