

VOTER SURVEY

Your answers are **confidential** and **optional**. Information provided here will not be correlated with any other identifying information provided in the Neighborhood Street Fund process.

Do you identify as: (Check all that apply)

- ☐ American Indian or Alaska Native
- ☐ Asian
- ☐ Black or African American
- ☐ Hispanic or Latino/a
- ☐ Native Hawaiian or Pacific Islander
- ☐ White
- ☐ Other (please specify):

What is your age?

- ☐ 11-17
- ☐ 18-24
- ☐ 25-30
- ☐ 31-35
- ☐ 36-40
- ☐ 41-50
- ☐ 51-64
- ☐ 65+

Have you previously participated in Neighborhood Street Fund (NSF) or other City of Seattle programs? (Check all that apply)

- ☐ I have not participated in NSF or other programs
- ☐ I was involved with NSF in 2016 - 2019 cycle
- ☐ I have been involved in other City of Seattle programs

What is your primary connection to the district you voted in for NSF 2019?

- ☐ I live here
- ☐ I work here
- ☐ I go to school here
- ☐ I worship here
- ☐ I receive services here
- ☐ I own a business here
- ☐ I volunteer here
- ☐ I am part of a program here
- ☐ Other:

How did you hear about today's vote? (Check all that apply)

- ☐ Seattle Department of Transportation newsletter or website
- ☐ Social Media
- ☐ Friend or family member
- ☐ School, organization or community group:
- ☐ Seattle Public Library branch
- ☐ Voting event
- ☐ Other:

Neighborhood Street Fund and Equity and Environment Initiative (EEI) Focus Areas
NSF projects in Equity and Environment Initiative (EEI) Focus Areas are indicated by an asterisk (*) on the ballot. These are geographic areas where communities of color, immigrants, refugees, people with low incomes, Native peoples and limited-English proficiency individuals tend to live.



2019 BALLOT: DISTRICT 2



Here is your ballot for the Neighborhood Street Fund

You are about to decide which projects in your district will move forward for final selection by the move Seattle Levy Oversight Committee.

- Voting is open to anyone age 11 and up who lives, works, goes to school, worships, receives services, volunteers, or is part of a program in the City of Seattle
- Each Voter may cast one ballot per City Council district and may choose up to five (5) projects per district. If you mark more than 5 projects, your vote will not be counted.
- For more information on the Neighborhood Street Fund, or the projects on the ballot, visit www.seattle.gov/NSF
- If you need assistance or request ballots in other languages contact us at nsf@seattle.gov or 206-733-9361

Return your completed ballot to any Seattle Public Library branch before May 5, 2019

Voter Eligibility Oath

I hereby swear that I meet the above listed requirements to vote in the Neighborhood Street Fund 2019-2021 Program Cycle, and I have not already voted this year in this district by using an online or paper ballot.

Signature	
First & Last Name (Print)	
Email (optional)	

Mark up to 5 projects by placing an “X” in the box next to the project name. If you select more than 5 projects, your vote will not be counted. An * indicates projects that are in Equity and Environment Initiative (EEI) Focus Areas (see back for more details).

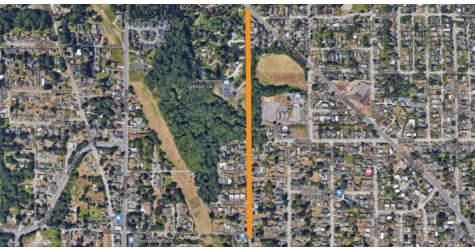
Project # 2019-181*
Traffic Calming Through New Holly
Project Type: Traffic calming



Project # 2019-281*
Rainier Beach New Traffic Signal
Project Type: Traffic signal



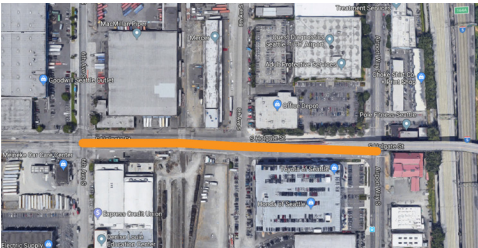
Project # 2019-128*
Improvements at Kubota Gardens
Project Type: Sidewalks



Project # 2019-44*
South Dakota Street Regrade
Project Type: Sidewalks and paving



Project # 2019-60*
Sidewalks on S Holgate St
Project Type: Sidewalks and curb ramps



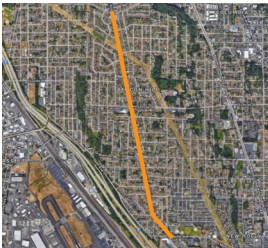
Project # 2019-61
Pedestrian Refuge at Rainier and Hanford
Project Type: Traffic calming and improved crossing



Project # 2019-160
Four-Way Stops on 38th Ave S
Project Type: Traffic controls and ADA Ramps



Project # 2019-104*
Beacon Ave Trail Enhancements
Project Type: Raised crosswalks



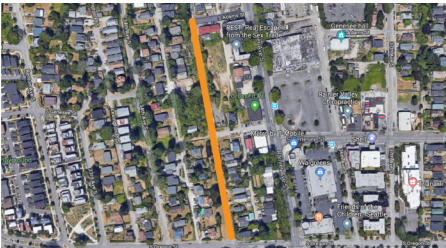
Project # 2019-68*
Pavement to Parks in Rainier Vista
Project Type: Traffic calming and Placemaking



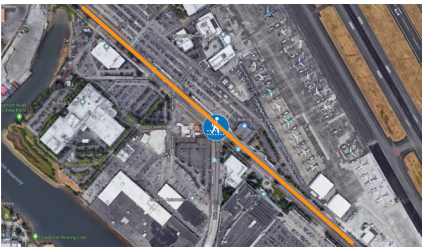
Project # 2019-3
Safe Connection to 1st Ave S Bridge
Project Type: Improved crossing and bike facilities



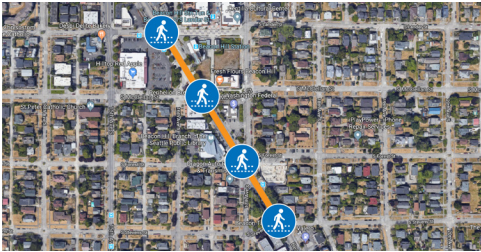
Project # 2019-227*
Sidewalk Connection Along Letitia Ave S
Project Type: Sidewalks/Walkway



Project # 2019-13
Improvements between Georgetown and South Park
Project Type: Improved crossing and shared-use path



Project # 2019-108*
Beacon Ave S Mobility Improvements
Project Type: Improved crossing and curb bulbs



Project # 2019-102*
Fix Golf Drive
Project Type: Traffic calming and bike facilities

