

# E Marginal Way S Paving and Safety Improvements

## Project Overview

We're working to make improvements on E Marginal Way S from 1st Ave S to the Seattle/Tukwila city boundary. The project will repave the street and build safety improvements for people walking, biking, and taking the bus. These improvements will make it safer to travel between Georgetown, South Park, Delridge, and Highland Park neighborhoods. The project will also improve bike connections between Tukwila, Downtown, and West Seattle. Our main project goals are to:

- **Repave the street** and extend the lifespan of the street by 10-20 years
- **Maintain freight operations** and keep people and goods moving
- **Improve bike connections** and separate drivers from people biking
- **Improve pedestrian safety** and connections for people walking and rolling
- **Meet the needs of transit** and improve service

## Project Background

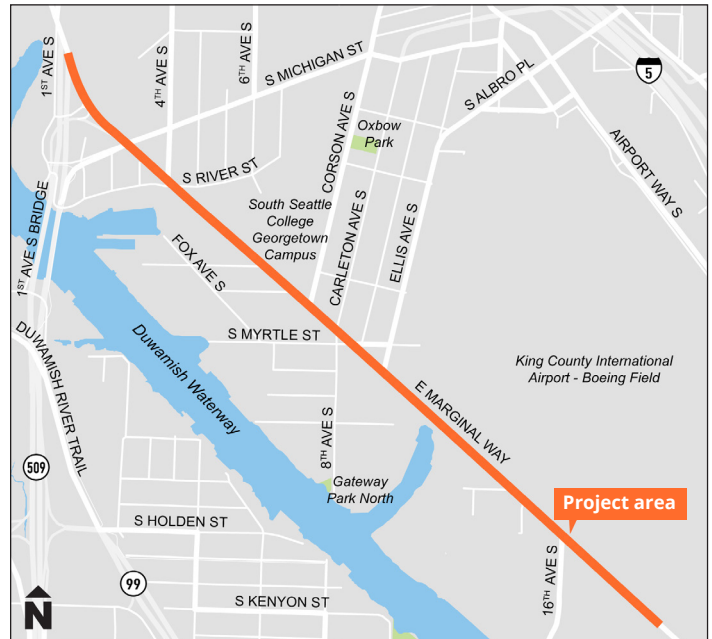
During the project's planning phase, we reviewed recommendations from past planning efforts such as the [Georgetown Mobility Study](#), the [Seattle Transportation Plan](#), and the [Duwamish Valley Action Plan](#). People want safer crossings on E Marginal Way S, bike lanes that are separated from cars, and for bike lanes to connect to other bike paths. The project proposes safety enhancements along the corridor to slow down vehicle turning movements and reduce conflicts by separating cars, trucks, and buses from people walking, biking, and rolling.

## Project Schedule

**Summer 2024:** Planning

**Summer 2025 – early 2026:** Design

**Early 2027:** Construction



## Budget

This project is part of SDOT's Arterial Asphalt and Concrete Paving Program. Design and construction of our paving projects are funded by the Seattle Transportation Levy, approved by voters in 2024. This project was awarded a Federal Preservation Grant. Additional partnership funding will be used for the Shared Use Path and Protected Bike Lanes, Vision Zero treatments, sidewalk repair, and transit improvements.

## Stay Connected

You will continue to hear from us throughout the design and construction phases over the next 2 years. Visit the project webpage for more information and to sign up for project email updates! Email us at [emarginalpavingandsafety@seattle.gov](mailto:emarginalpavingandsafety@seattle.gov) if you have any questions.



**Scan the QR code or visit:**  
[seattle.gov/transportation/EMarginalPavingandSafety](https://seattle.gov/transportation/EMarginalPavingandSafety)

### PROJECT INFORMATION & CONTACT

Lisa Harrison, Public Engagement Lead

Webpage: [seattle.gov/transportation/EMarginalPavingandSafety](https://seattle.gov/transportation/EMarginalPavingandSafety)

Email: [emarginalpavingandsafety@seattle.gov](mailto:emarginalpavingandsafety@seattle.gov) | 206-775-8719



**Seattle**  
 Department of  
 Transportation

## Project Improvements

### Freight and Driving

These upgrades extend the lifespan of the street, improve traffic flow, and reduce conflicts between travelers:

- Repave the street
- Maintain freight operations
- Upgrade signals and traffic sensors
- Add dedicated signal turn phases
- Improve stormwater drainage

### Safety

These Vision Zero improvements encourage safer driving speeds and slow down vehicle turning movements, especially near Georgetown's residential neighborhood:

- Redesign the right-hand turn from E Marginal Way S to 4th Ave S
- Install hardened centerlines on side streets and curb bulbs
- Change from two to one southbound lanes between 4th Ave S and Ellis Ave S

### Biking

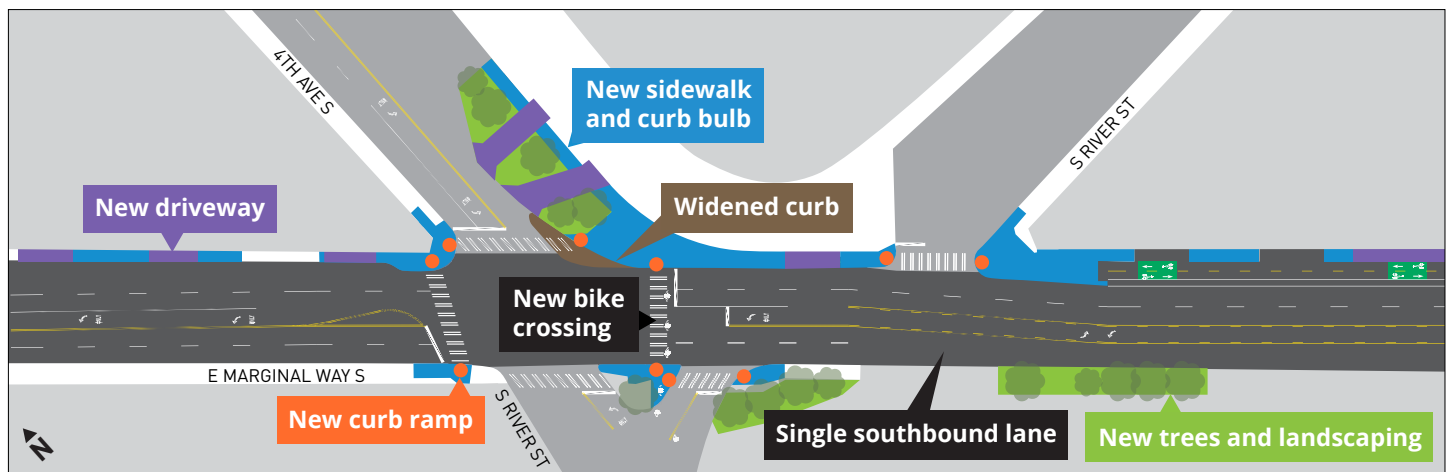
These bike improvements expand the bike network, help meet climate goals, and improve safety by separating cyclists from drivers:

- Construct two-way concrete protected bike lanes on the north side of the street between S River St and Corson Ave S
- Construct directional protected bike lanes from 16th Ave S to the Seattle/Tukwila city line
- Install a two-way signalized bike crossing at S River St

### Walking, Rolling, and Taking Transit

These changes will make it safer, easier, and more pleasant to get around the neighborhood for people who aren't driving:

- Build a Shared Use Path on the north side of the street between Corson Ave S and where it currently ends near Ellis Ave S
- Upgrade sidewalks and curb ramps to meet Americans with Disabilities Act (ADA) standards
- Install Accessible Pedestrian Signals, which provide auditory, visual, and vibrotactile information
- Install a bus bulb, shelter, and lighting at the southbound S Webster St bus stop
- Add shelter to the northbound Ellis Ave S bus stop
- Add new trees and landscaping



Final design improvements at the E Marginal Way S/4th Ave S/S River St intersection, in addition to repaving.