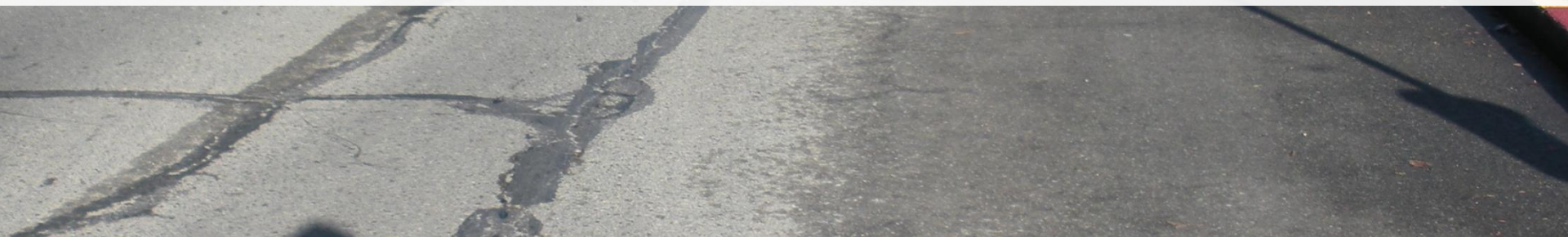




35th Ave NE Paving & Safety Improvements Project



Wedgwood Community Council
Dawn Schellenberg & Caylen Beaty
March 20, 2017



Seattle
Department of
Transportation

Our mission, vision, and core values

Mission: deliver a high-quality transportation system for Seattle

Vision: connected people, places, and products

Committed to **5 core values** to create a city that is:

- Safe
- Interconnected
- Affordable
- Vibrant
- Innovative

For **all**

Presentation overview

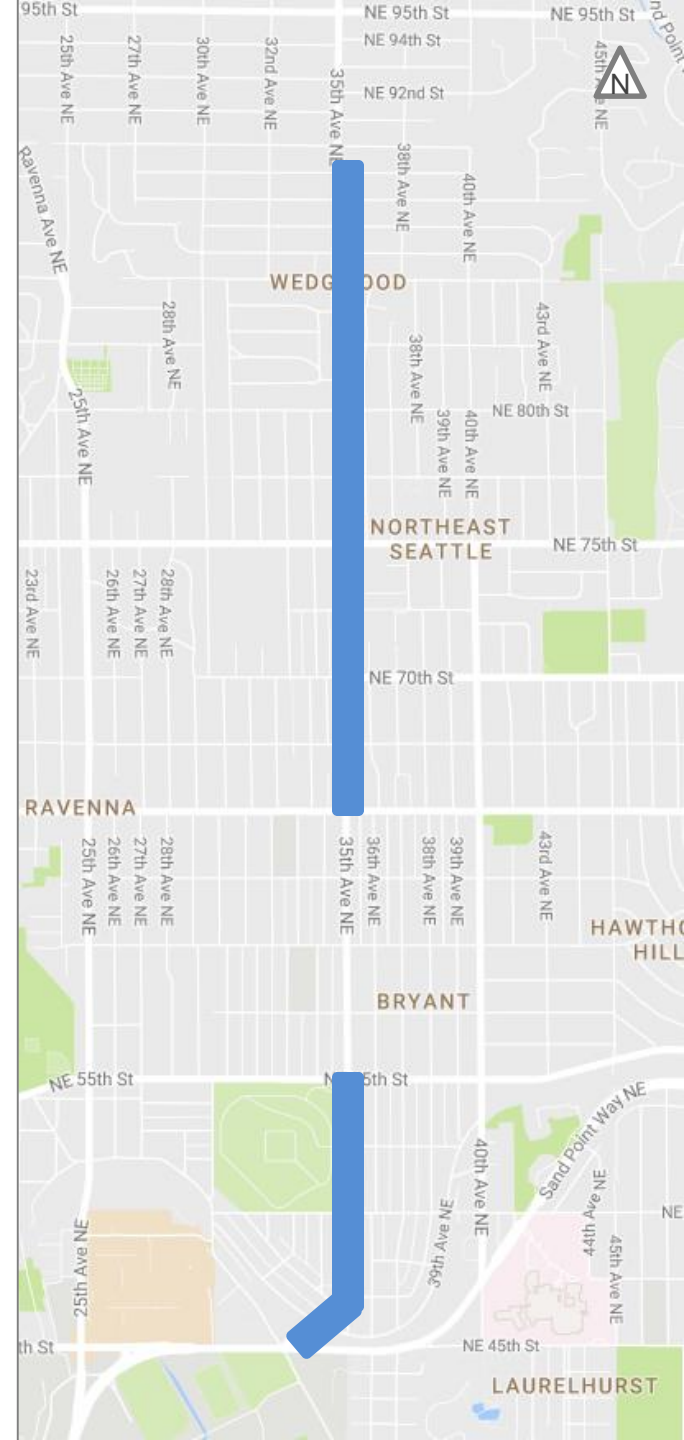
- Project overview recap
 - Project goals
 - Traffic data
 - Recommendations
- What we've heard
- Street design concepts
- Schedule
- Hear from you



35th near 70th, looking north

Project area

- NE 45th St – NE 89th St
 - NE 55th – NE 65th St included, but not repaving



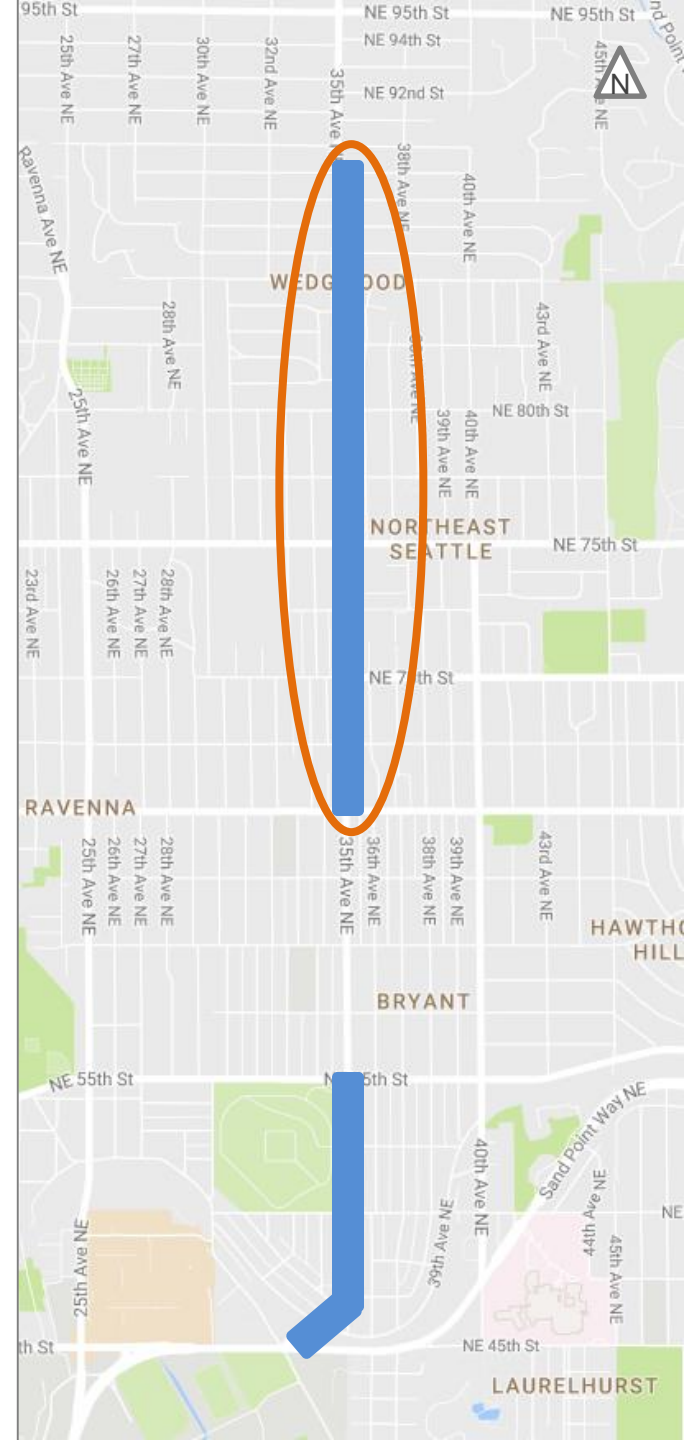
Project goals

- Extend street's useful life
- Improve accessibility for people walking
- Explore opportunities to improve safety and mobility



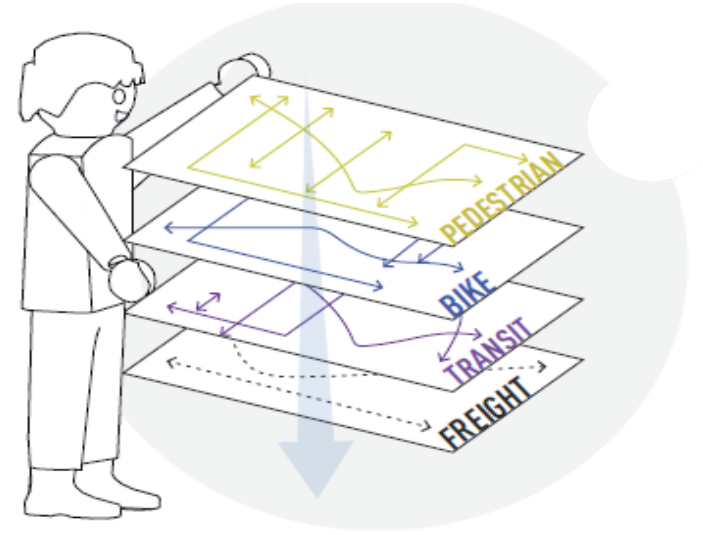
Traffic data

- Vehicle volumes: 12,500/day (average)
- Vehicle speed: 31mph (85th percentile speed)
- Collisions: 113 (in 5 years)
- Peak hour parking restrictions:
7-9AM (southbound); 4-6PM (northbound)
- Parking utilization: Midday peak average: ~40%;
highest NE 68-75th and NE 85th commercial
nodes



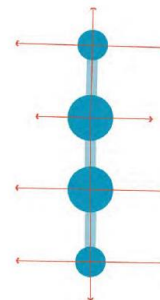
Modal plan & Vision Zero recommendations

- Improve pedestrian and bike access to and across 35th Ave NE
- Improve pedestrian realm
- Reduce serious and fatal traffic crashes
- Add bike lanes
- Add left-turn pockets at arterials
- Shift northbound bus stop at 75th Ave NE



THE FUTURE OF 35TH AVE NE

January 2015



Proactively planning for change along a
1.5 mile corridor in NE Seattle



35th Ave Committee

MAKERS SVR

VISION
ZERØ

SAFER STREETS FOR SEATTLE

What we've heard

- Concern about speeding
- Desire to cross street more easily
- Interest in using more transit and biking
- Interest in maintaining parking
- Discourage cut-through traffic
- Desire for turn pockets and signals at key intersections
- Preference for “protected” bike lanes
- Understand specific needs of library, religious institutions, and post office

Bike facilities on 35th – Opportunities

- Safer for people biking and adds predictability for all travelers
- Access to businesses and community centers
- Street design that supports lower vehicle speeds
- Contributes to citywide bike network



Conceptual rendering of bike facilities on 35th near 73rd

Bike facilities on 35th – Requirements

- Parking consolidation (removes peak-hour restrictions)
- Bus loading will block vehicles/bikes at times



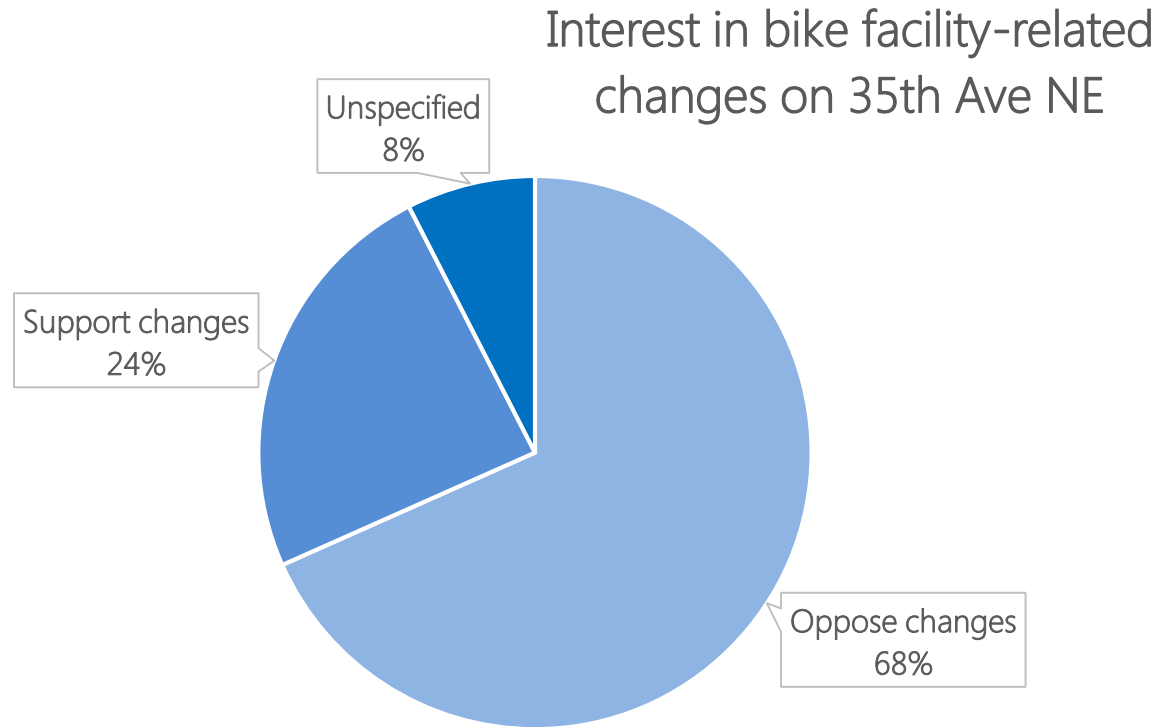
Conceptual
rendering of
bike facilities on
35th near 73rd

Schedule

Date	Action
Aug 2016	Mailing and online survey
Oct 2016	Mailing and open house
Nov 2016	Doorhangers, door to door, community briefings
Spring 2017	Preferred concept announcement
2017	Final design
As early as 2018	Construction

Community feedback

- More than **137** emails, calls, and open house comments



Questions and feedback

Caylen Beaty
Dawn Schellenberg

PavingOutreach@Seattle.gov

www.seattle.gov/transportation/2018ArterialPaving.htm



Seattle
Department of
Transportation