



Seattle Transportation Plan

A Vision for the Future of Transportation in Seattle



-

STP Overview

The Seattle Transportation Plan (STP) is our commitment to building a transportation system that provides everyone with access to safe, efficient, and affordable options to reach places and opportunities.

The STP is the vision for the future of transportation in Seattle.

Plan Ambitions

The plan will:

1. **Collectively reimagine our transportation vision**
2. **Plan for people first, connecting them to the places that matter most to them**
3. **Remain grounded in our steadfast values**
4. **Meet the moment with inclusive engagement**



Why does Seattle need this plan now?



**To address
urgent and
emerging
challenges**



**To inform
future
transportation
funding**



**To align
with Seattle
Comprehensive
Plan Update**

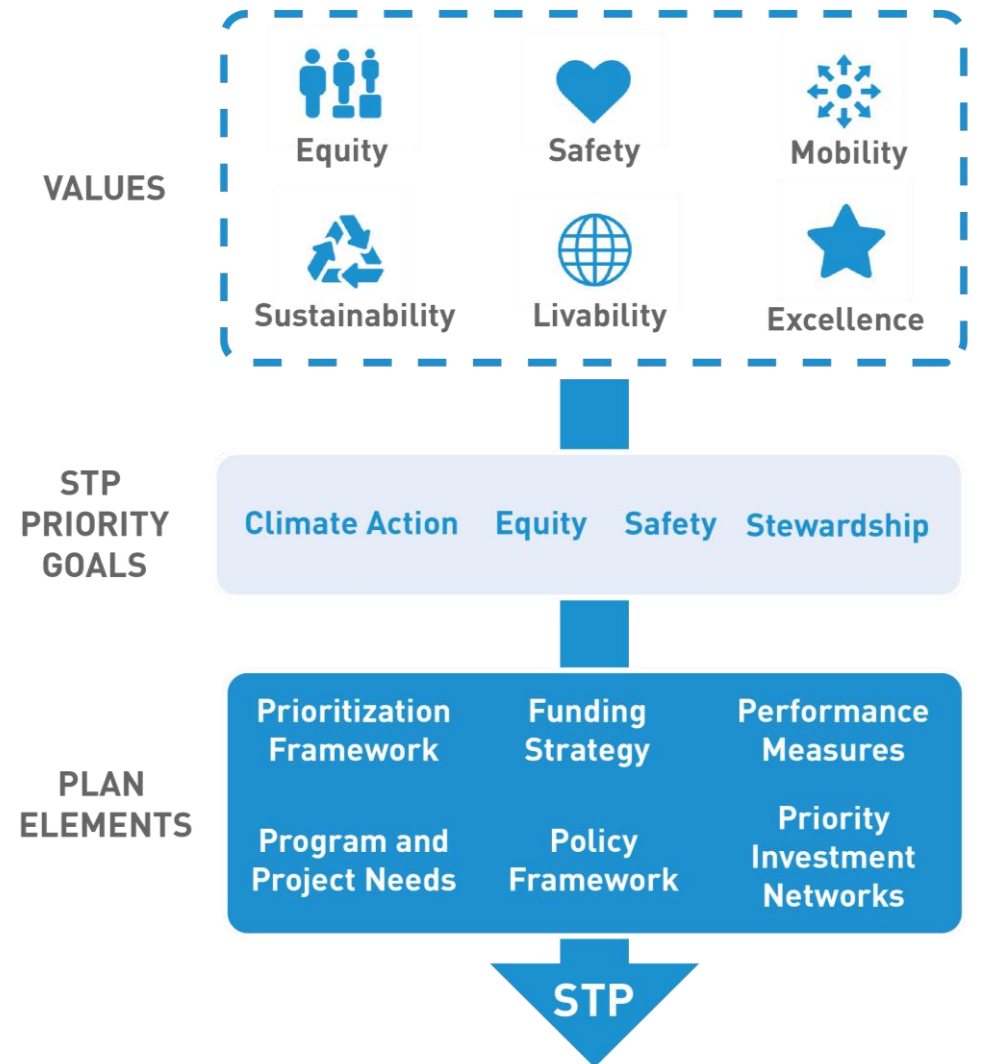


**To plan the limited
space in our
right-of-way**
(streets, sidewalks,
and other public
spaces)

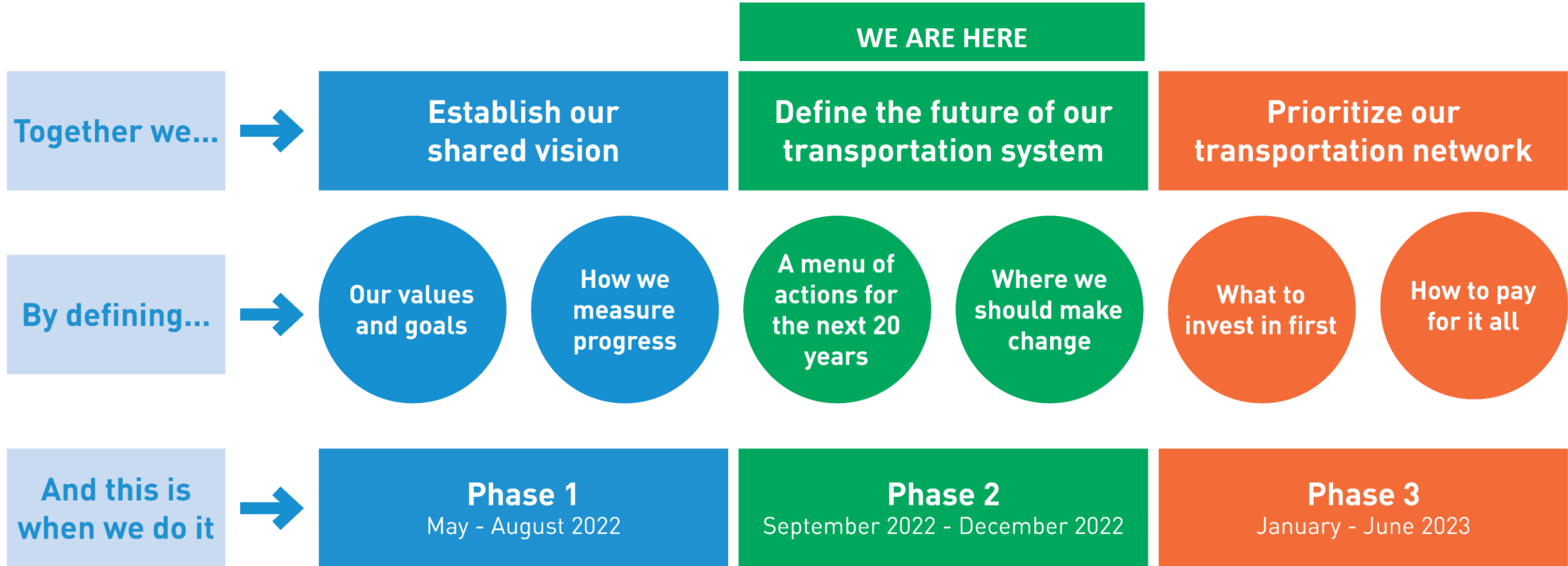
What values drive our transportation vision?

Our organizational Values feed the Goals and the technical elements of the STP.

Community engagement informed the STP Priority Goals and will influence all elements of the STP.



Creating the Plan with Community



Phase 1 Engagement: Establish a Shared Vision

- Community-based organizations (CBOs) and Community Liaisons (CLs) are being compensated for collaboration and participation
 - Khmer Community of Seattle King County/*Noio Pathways/ KIMYUNITY*
 - Asian Pacific American Labor Alliance
 - Central Area Collaborative
 - Duwamish Valley Sustainability Association
 - Smash the Box
 - Estelita's Library
 - Legacy of Equality Leadership and Organizing
 - Department of Neighborhood Community Liaisons
- Example engagement activities led by CBOs and CLs:
 - Targeted opportunities for youth and elders
 - Custom surveys
 - Neighborhood events with flyers and giveaways
 - Interviews with community members

Phase 1 outreach at-a-glance

26

Meetings/Briefings*



11

Community Meetings



7

Board/Commission Meetings



4

Interagency Meetings



4

Transportation Equity Workgroup Meetings

42

Events*



14

Festivals



15

Targeted community events



4

Bike-specific events



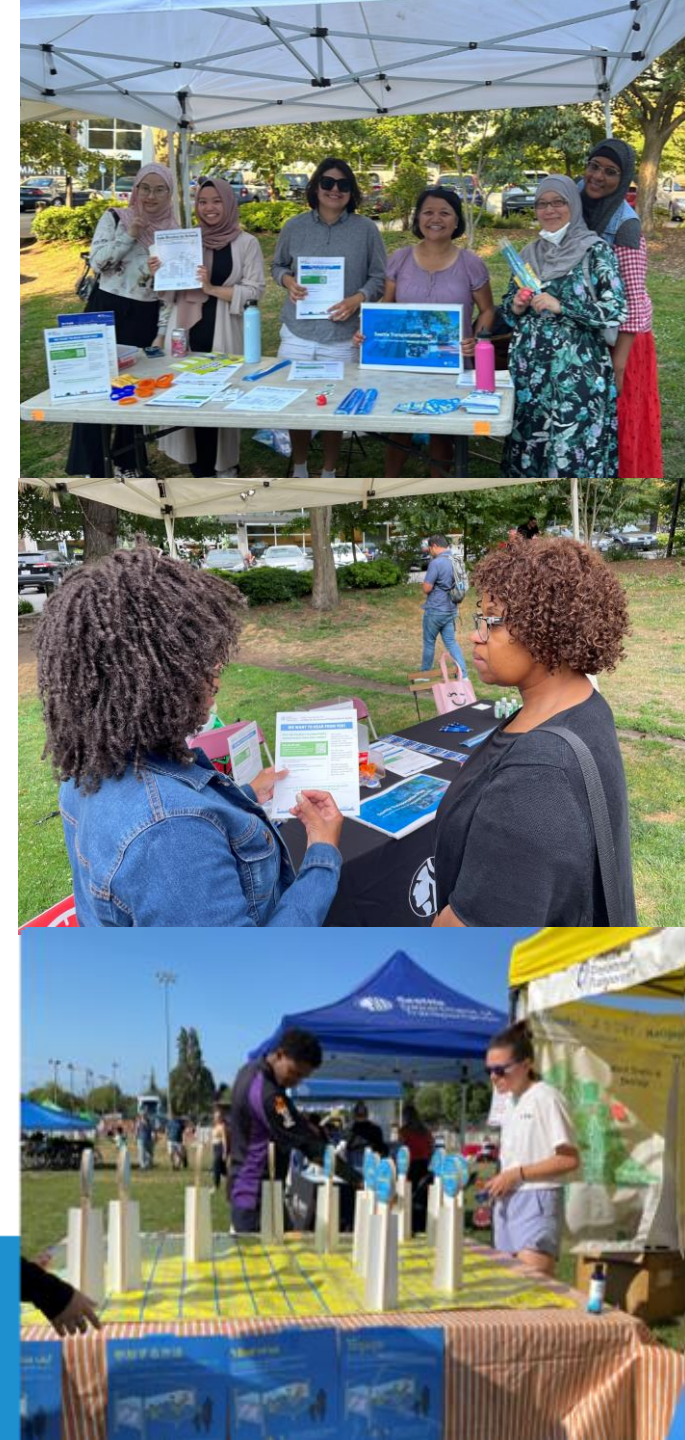
8

Markets



1

Listening Session



*as of September 1, 2022

Some of what we've heard

Safety and comfort for all ages and abilities

De-prioritizing the automobile

Connectivity, reliability, and ease of use

Emissions reduction

Investment in sidewalks, bike lanes, and transit

Equitable infrastructure

Traffic calming

Maintenance

2,295

Survey participants*

6,317

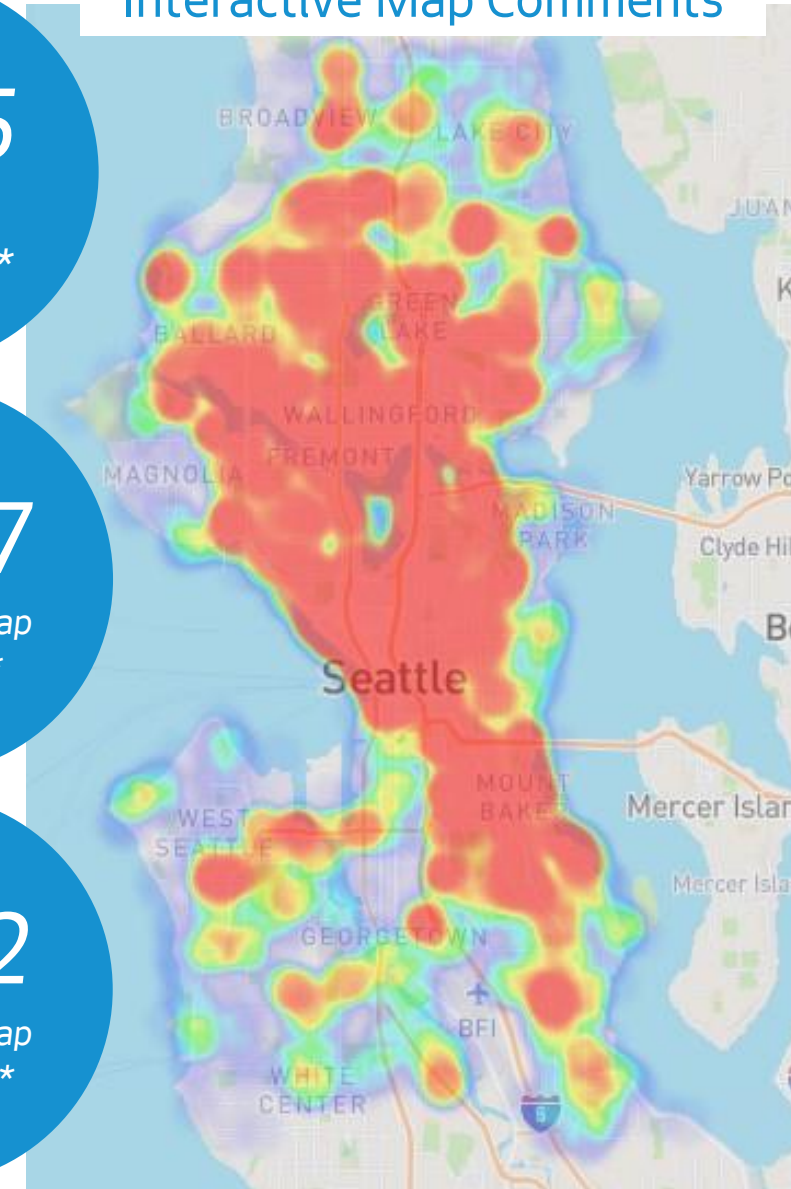
Interactive map comments*

1,752

Interactive map participants*

*as of September 1, 2022

Interactive Map Comments



Seattle
Department of
Transportation

Phase 2 engagement

We want to know:

- a) Do the Seattle Transportation Plan draft vision, goals, and objectives feel right to you?
- b) What future of transportation in Seattle do you want to see?
- c) What actions should we take to achieve our goals?

Stay involved



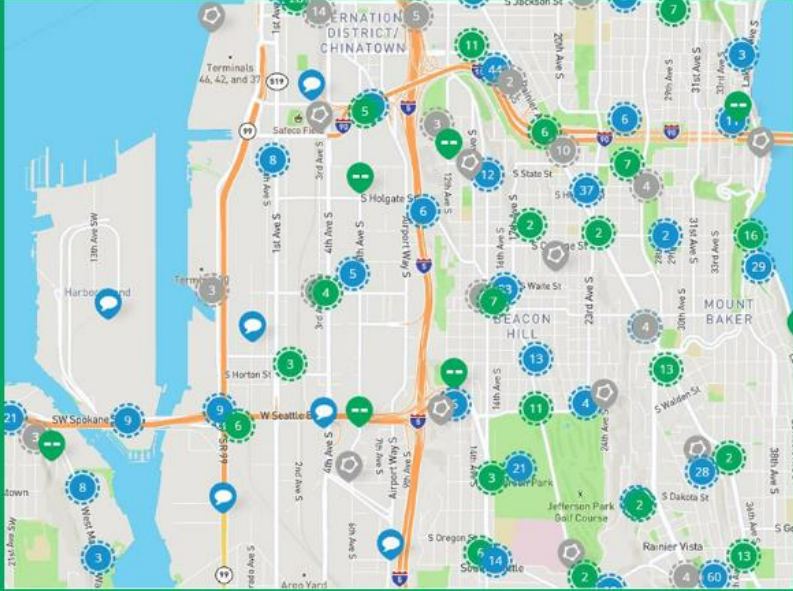
Seattle Transportation Plan ONLINE ENGAGEMENT HUB

View this Site in Additional Languages:
Select Language ▼

The second phase of engagement has begun! During our first phase of engagement, which ran from May–August 2022, we asked about your vision for the future of transportation in Seattle. Now we need your help to turn those ideas into actions.

NEW ENGAGEMENT OPPORTUNITIES!

- REVIEW OUR VISION, GOALS, AND OBJECTIVES
- SELECT THE FUTURE YOU WANT TO SEE
- TELL US WHAT ACTIONS YOU LIKE
- LEAVE A GENERAL COMMENT
- JOIN US AT AN UPCOMING EVENT
- SEND US AN EMAIL OR CALL OUR VOICEMAIL LINE



What's Next?

Phase 1 Public Engagement Summary

- We've wrapped up this phase and will be sharing what we heard with you very soon!

Phase 2 Public Engagement (Now - Dec)

- Visit the Online Engagement Hub to share your input and learn more ways to get involved
- Community Events and CL/CBO engagement continues

Ongoing Background Work

- Policy Framework & Performance Measures
- Network Integration & Scenario Evaluation (Now - Dec)

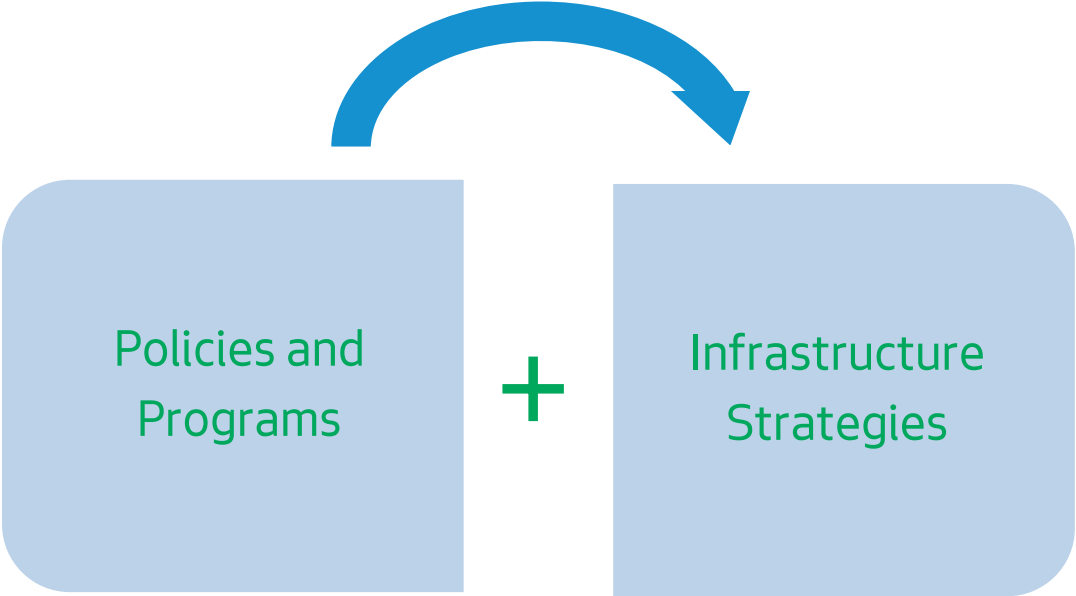


The Menu of Actions are...

- potential **actions** to attain our goals
- inspired by the outcomes of Phase 1 **engagement**
- **bold** and intended to spur discussion with the community about choices



The Menu of Actions includes 23 unique...



Ex: Recognize and address inequities in our transportation system.

Ex: Reallocate street space

Menu of Actions

Empower the community to guide our future transportation system
Implement the Transportation Equity Framework (TEF) actions and strategies to expand community engagement, share decision making, and foster transparency and accountability.

Center the voices of communities of color and underrepresented groups in our planning processes
Prioritize the vision, goals, and needs of historically underrepresented communities in our engagement and decision-making processes.

Recognize and address inequities in our transportation system
Improve safety and access to opportunities in persistently underinvested in neighborhoods, including reconnecting communities impacted by busy streets and highways and expanding access to transit.

Make more space for pedestrians
Ensure Seattle's streets are safe, vibrant, and accessible for people walking and rolling by prioritizing sidewalk gaps and places with the greatest safety concerns.



Reallocate street space

Repurpose some of our existing traffic lanes into spaces for bikes, transit, sidewalk cafes, etc., while also keeping essential traffic moving.



Introduce low-emission zones

Reduce the impacts of traffic by directing through trips to designated corridors and establishing car-free or car-light areas for people walking, biking, and rolling.

Upcoming Milestones

2022

- **October:** Full launch of phase 2 of community engagement
- **Fall:** Complete our internal technical analysis, including modal network integration and modernization tasks

2023

- **April:** Publish the draft plan for public review
- **April:** Launch phase 3 of community engagement
- **Summer:** Transmit Mayor's recommended plan to City Council

How Can I Get Involved?



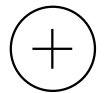
STP@seattle.gov



[\(206\) 257-2114](tel:(206)257-2114)



<https://seattletransportationplan.infocommunity.org/>



Joanna Valencia and Jonathan Lewis (Project Managers)

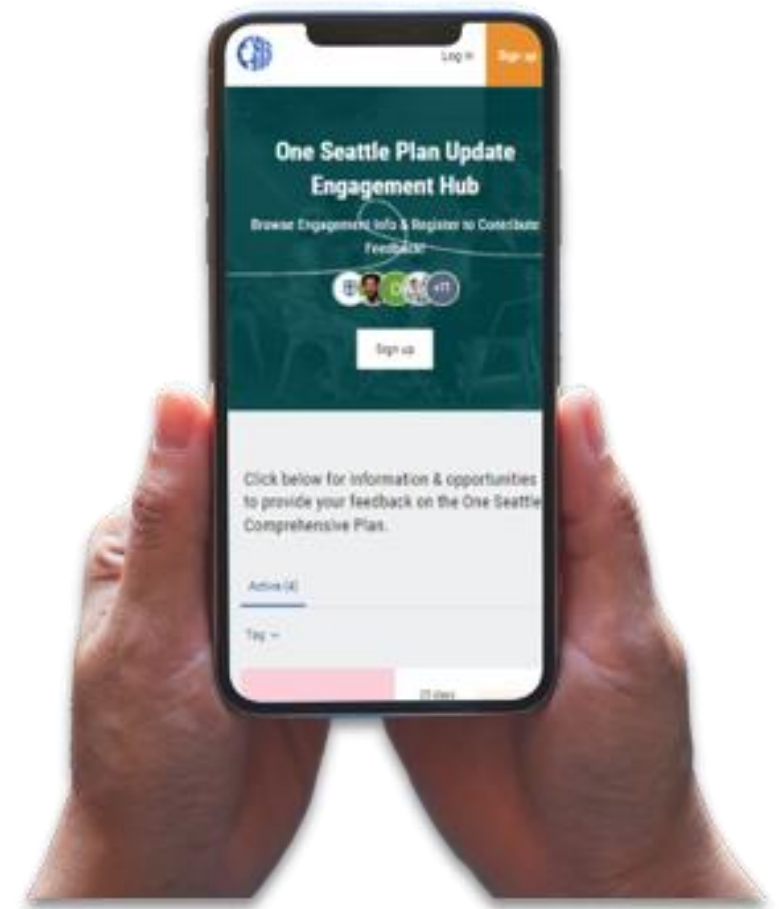
Sign up on
the website
to subscribe
for project
updates



Get involved with the One Seattle Comprehensive Plan Update!



engage.oneSeattleplan.com



A large mural of two stylized eyes is painted on a sidewalk. The eyes are blue with brown irises and are surrounded by colorful, swirling patterns in shades of blue, yellow, and brown. The mural is set against a light blue background. In the background, two orange traffic cones are visible on the sidewalk. A blue semi-transparent overlay covers the entire image, and the text "Thank you!" is centered in white.

Thank you!