

DEARBORN STREET UPGRADES

Improving safety and traffic flow on S Dearborn St

July 2018

PROJECT DESCRIPTION

We completed the first phase of this project last year which included changing the lane configuration to add more space for people biking. Starting this summer, we will improve traffic flow and repave sections of S Dearborn St to make it safer and more comfortable to travel on.

PROJECT COMPONENTS



Repave and restripe S Dearborn St from 9th Ave S to Rainier Ave S



Restripe and make minor pavement repairs from 6th Ave S to 9th Ave S



Add a traffic diverter at Rainier Ave S and S Dearborn St to decrease delays for people driving and taking transit and reduce the number of drivers cutting through the Jackson Place neighborhood (see details on back)



Extend the existing protected bike lane to connect under I-5, upgrade traffic signals to include bike signals, and add physical barriers between people biking and moving traffic

OUTREACH

Community outreach began in summer 2015 and included info sessions and meetings with project neighbors. We will keep project neighbors in the loop during this second phase of construction with email updates, phone calls, and door-to-door flyering.

Please contact us to sign up for our email list at:
dearbornpaving@seattle.gov

CONSTRUCTION IMPACTS & SCHEDULE

We expect construction to begin in August and continue through fall 2018.

What to expect

- Neighbors may experience noise from construction crews and equipment, vibration, and dust
- Crews will typically work at night and outside of peak hours to keep traffic flowing on this busy street
- We expect to keep 2 lanes of traffic open at all times
- We will maintain access to businesses and residences at all times



Example of street repaving. Street repaving keeps our streets safe and smooth and lowers the cost of future maintenance.

Approved by voters in 2015, the 9-year, \$930 million Levy to Move Seattle provides funding to improve safety for all travelers, maintain our streets and bridges, and invest in reliable, affordable travel options for a growing city.

LEARN MORE!

www.seattle.gov/transportation/dearborn
DearbornPaving@Seattle.gov, (206) 529-4295
For translation and interpretation, please call (206) 529-4295

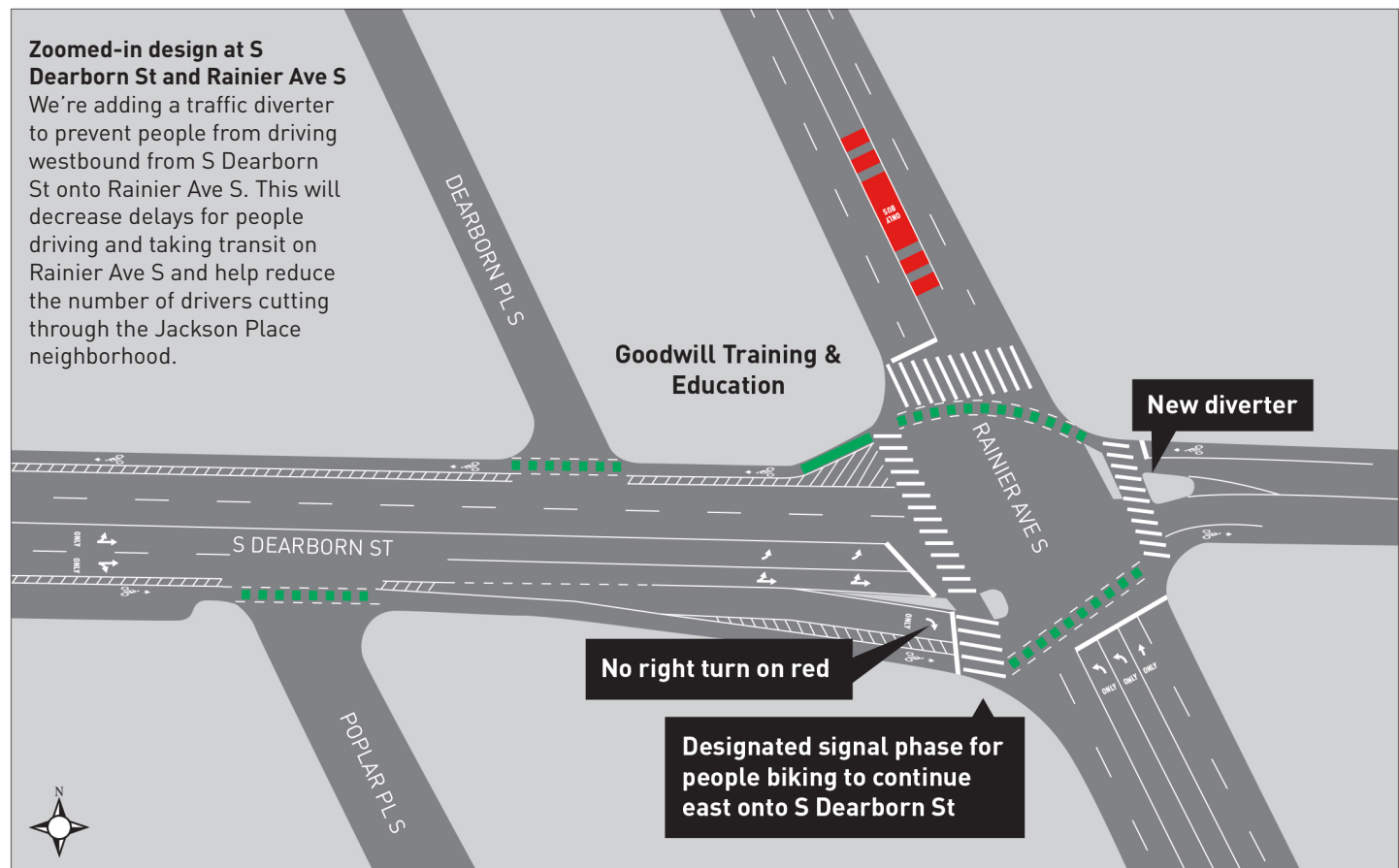


Seattle
Department of
Transportation

The Levy to

MOVE SEATTLE





If you need this information translated, please call (206) 529-4295.

如果您需要此信息翻譯成中文 請致電(206) 529-4295.

Kung kailangan mo ang impormasyon na ito na nakasalin sa (206) 529-4295.

Tagalog mangyari lamang na tumawag sa (206) 529-4295.

Si necesita traducir esta información al español, llame al (206) 529-4295.

Odeeffannoon kun akka siif (206) 529-4295.

Nếu quý vị cần thông tin này chuyển ngữ sang tiếng Việt xin gọi (206) 529-4295.

የዚህን መረጃ ትርጉም ከፈለጉ፣ በዚህ ስልክ ቁጥር ይደውሉ፡ (206) 529-4295.

ናይዚ ሓበሬታ ትርጉም እንተደለኹም፣ በዚ ቁጽሪ ስልክ ይድውሉ፡ (206) 529-4295.

당신이 번역이 정보를 필요로 하는 경우에, (206) 529-4295 로 전화해주시시오.