

# SDOT UPCOMING CONSULTANT OPPORTUNITIES

**Listing Updated Quarterly**

Projects	Description	Design Consultant Opportunities	Construction Management Opportunities	Outreach Consultant Opportunities During Design	Outreach Consultant Opportunities During Construction	Planning	Other	Project Manager
Bicycle/Multi-Modal On-Call Design Services	Provide design services to support the preliminary engineering, PS&E production, and construction of SDOT CIPs to expand Seattle's bicycle facility network. Projects will likely include Neighborhood Greenways, Protected Bike Lanes, and Multi-Use trails.	Q1 2019						Peter Trinh peter.trinh@seattle.gov 206-615-0929
Fremont RapidRide Planing, Design & Environmental	Zero to 30% planning, design and environmental for the Fremont RapidRide Corridor (a Seattle RapidRide Expansion Program corridor) with the provision for amending the contract to include all services associate with completing 60%, 90% and 100% design milestones. Work may include traffic analysis, traffic modeling, signals & ITS, and multimodal design. There is the potential for this corridor to be federally funded.	Q1 2019						Jason Fialkoff jason.fialkoff@seattle.gov 206-684-4617
Madison BRT --- CM Services	Provide on-site RE, inspectors, office engineer/document control team to manage the construction of this bus rapid transit project. A. Madison BRT (RE/Inspectors only) B. Madison BRT (Office Engineer/Doc Control only)		Q4 2019					Mark Sliger mark.sliger@seattle.gov 206-733-9936
Two Structural On-Call Contracts	SDOT Structural On-Call contract is purposed to serve as an extended in-house structural engineering service capacity. The On-Call consultant services are also needed to supplement SDOT in-house resources and technical expertise to perform in complex structural projects.	Q1 2019						Yuling Teo yuling.teo@seattle.gov 206-733-9244
Ballard Bridge Planning Study	The Ballard Bridge is over 100 years old and carries more than 57,000 vehicles per day. This planning study would explore alternatives and identify a recommended replacement alternative and associated costs. Regarding the recommended alternative, this study should identify the: essential functional needs, right-of-way needs, types of environmental permitting required, and ways to minimize impact to the navigable channel and 15th Ave W corridor traffic.	completed				Q1 - Q2 2019		Wes Ducey wes.ducey@seattle.gov 206-684-7033

Disclaimer: This information is neither a guarantee of contracting opportunities, nor a promise of business and is subject to change. If you have any questions on the prospective projects, please contact the staff person identified for the project.

Disclaimer: Updated 1/2019. This information is neither a guarantee of contracting opportunities, nor a promise of business and is subject to change. If you have any questions on the prospective projects, please contact the staff person identified for the project. Visit the SDOT WMBE website for the most up-to-date information at [www.seattle.gov/transportation/oeei-wmbe](http://www.seattle.gov/transportation/oeei-wmbe) or contact the SDOT Office of Equity and Economic Inclusion Interim WMBE Advisor, Viviana Y. Garza at [viviana.garza@seattle.gov](mailto:viviana.garza@seattle.gov).

Projects	Description	Design Consultant Opportunities	Construction Management Opportunities	Outreach Consultant Opportunities During Design	Outreach Consultant Opportunities During Construction	Planning	Other	Project Manager
E. Marginal Way Corridor Improvement Project	Provide PS&E design services for all or part of the E. Marginal Way Corridor Improvement project. This project will reconstruct the roadway between approximately S Spokane St and S Atlantic St, construct a bicycle facility between S Atlantic St and Diagonal Ave S, and include sidewalk repair, new sidewalk, and spot improvements throughout the corridor. SPU will replace a water main through part of the project area. This project may be designed in one contract, in phases, or through a combination of the two.	Q1 2019						Megan Hoyt megan.hoyt@seattle.gov 206-684-5127
ROSTER SOLICITATION: Accessible Mt. Baker --- Community Outreach	SDOT is seeking consultant services for community outreach for the project through the project through the planning and early design phase. The project team will be led by the SDOT project manager and will include a consultant design team, SDOT outreach lead, and other SDOT and City staff with subject-matter expertise.				Q1 2019			Sara Colling sara.colling@seattle.gov 206-727-8697
Westlake Shared Mobility Hub Wayfinding and Placemaking Project	The project goal is to decrease the likelihood of SOV trips into the area near Westlake Station in Downtown Seattle using wayfinding and placemaking elements, and to understand that change through field observations and survey work. This project also seeks to increase the public's understanding of the Westlake Station area's complex transit operating environment, with the ultimate goal of getting more people to take transit for more trips.						Q1 2019	Joel Miller joel.miller@seattle.gov 206-684-7639

Disclaimer: This information is neither a guarantee of contracting opportunities, nor a promise of business and is subject to change. If you have any questions on the prospective projects, please contact the staff person identified for the project.

Disclaimer: Updated 1/2019. This information is neither a guarantee of contracting opportunities, nor a promise of business and is subject to change. If you have any questions on the prospective projects, please contact the staff person identified for the project. Visit the SDOT WMBE website for the most up-to-date information at [www.seattle.gov/transportation/oeei-wmbe](http://www.seattle.gov/transportation/oeei-wmbe) or contact the SDOT Office of Equity and Economic Inclusion Interim WMBE Advisor, Viviana Y. Garza at [viviana.garza@seattle.gov](mailto:viviana.garza@seattle.gov).



## Accessible Mount Baker Outreach

<b>Project Manager</b>	Therese Casper
<b>Email</b>	<a href="mailto:Therese.casper@seattle.gov">Therese.casper@seattle.gov</a>
<b>Phone</b>	(206) 684-8764
<b>Website</b>	<a href="https://www.seattle.gov/transportation/projects-and-programs/programs/transportation-planning/accessible-mt-baker">https://www.seattle.gov/transportation/projects-and-programs/programs/transportation-planning/accessible-mt-baker</a>

<b>High Level Scope</b>	Provide communications and community outreach for the Accessible Mt. Baker project through the planning and early design phase.
<b>Contracting Opportunities (3)</b>	Scope will likely include the following tasks: <ul style="list-style-type: none"><li>• Outreach Project Management and Strategic Planning, Outreach Materials Development, Public Events and Meetings, Internal and External Coordination and Correspondence, and other outreach activities. RFP will likely include minimum qualification of transportation design communications experience, and in-depth knowledge of the geographic area and key stakeholders.</li></ul>
<b>Scope Details</b>	Contracting Opportunity is anticipated to be released as a roster solicitation. The solicitation will be sent to firms registered under relevant roster categories from the City of Seattle Online Business Directory (OBD).
<b>Contract Estimate(s)</b>	\$200,000

<b>Schedule Summary</b>	SDOT is looking to release this in February 2019.
<p>Roster procurements are open to eligible firms within the applicable associated roster list for the procurement. This information is neither a guarantee of contracting opportunities, nor a promise of business and is subject to change.</p> <p>To add your firm to the OBD, or update vendor profile information, to include what rosters your firm is listed for, log in here: <a href="https://web6.seattle.gov/FAS/OBD/Logon/Logon.aspx">https://web6.seattle.gov/FAS/OBD/Logon/Logon.aspx</a>. If you have any questions on the prospective projects, please contact the staff person identified for the project.</p>	





## Structural On-Call Contracts

<b>Project Manager</b>	Yuling Teo (Contract Manager)
<b>Email</b>	Yuling.teo@seattle.gov
<b>Phone</b>	(206) 733-9244

<b>High Level Scope</b>	<p>SDOT Structural On-Call contract is purposed to serve as an extended in-house structural engineering service capacity.</p> <p>The On-Call consultant services are also needed to supplement SDOT in-house resources and technical expertise to perform in complex structural projects.</p>
<b>Contracting Opportunities (3)</b>	<p><b>SDOT Structural On-Call Contracts</b></p> <ul style="list-style-type: none"><li>• <u>Scope Summary</u><ul style="list-style-type: none"><li>○ Perform structural analysis and design for bridges, retaining walls, sign structures, utility pole foundations, stairways, areaways, structural sidewalk, ramps, pier protection, and more.</li><li>○ Perform bridge seismic vulnerability analysis and retrofit design, independent design checks, deliver TS&amp;L, PS&amp;E, Preliminary Engineering, BSRP, BRRP packages</li><li>○ Perform value engineering, bridge load rating analysis and report</li><li>○ Perform constructability and biddability review</li><li>○ Provide geotechnical engineering support</li></ul></li></ul>
<b>Scope Details</b>	Contracting Opportunity is anticipated to be released as an RFQ
<b>Contract Estimate(s)</b>	\$500,000 per contract, total of two contracts

<b>Schedule Summary</b>	SDOT is looking to release this in Q1 2019.
<p>The consultant contract opportunity will be announced on <a href="http://consultants.seattle.gov/">http://consultants.seattle.gov/</a>. The Formal Solicitations are bid through the <b>City of Seattle E-Bid Exchange</b> system.</p> <p>This information is neither a guarantee of contracting opportunities, nor a promise of business and is subject to change. If you have any questions on the prospective projects, please contact the staff person identified for the project.</p>	





## Neighborhood Street Fund Outreach

<b>Project Manager</b>	Monica DeWald
<b>Email</b>	Monica.DeWald@seattle.gov
<b>Phone</b>	206-684-5374
<b>Website</b>	<a href="https://www.seattle.gov/transportation/projects-and-programs/programs/neighborhood-street-fund">https://www.seattle.gov/transportation/projects-and-programs/programs/neighborhood-street-fund</a>

<b>High Level Scope</b>	Provide public outreach for the Neighborhood Street Fund (NSF) program including developing materials, coordinating meetings, and managing correspondence. NSF is a community driven project selection process, so outreach will include notifying applicants of their project's selection or rejection over email and/or phone, and keeping track of project status in order to answer questions regarding program outcomes through construction and project closeout in approximately fall of 2021.
<b>Contracting Opportunities (3)</b>	<p><b>A. Neighborhood Street Fund Program</b></p> <ul style="list-style-type: none"><li>• <u>Scope Summary</u><ul style="list-style-type: none"><li>○ Scope will likely include the following tasks: Outreach Project Management and Strategic Planning, Outreach Materials Development, Public Events and Meetings, Internal and External Coordination and Correspondence, and other outreach activities. RFP will likely include minimum qualification of controversial transportation construction communications experience, and in-depth knowledge of the geographic area and key stakeholders.</li></ul></li><li>• <u>Estimate:</u><ul style="list-style-type: none"><li>○ \$280,000</li></ul></li><li>• <u>Funding Notes:</u><ul style="list-style-type: none"><li>○ Move Seattle Levy funded for neighborhood projects</li></ul></li></ul>
<b>Scope Details</b>	Contracting Opportunity is anticipated to be released as a roster solicitation. The solicitation will be sent to firms registered under relevant roster categories from the City of Seattle Online Business Directory (OBD).
<b>Contract Estimate(s)</b>	\$280,000

<b>Schedule Summary</b>	SDOT is looking to release this in Fall 2018.
<p>The consultant contract opportunity will be announced on <a href="http://consultants.seattle.gov/">http://consultants.seattle.gov/</a>. The Formal Solicitations are bid through the <b>City of Seattle E-Bid Exchange</b> system. This information is neither a guarantee of contracting opportunities, nor a promise of business and is subject to change. If you have any questions on the prospective projects, please contact the staff person identified for the project.</p>	





## Westlake Shared Mobility Hub Wayfinding and Placemaking Project

<b>Project Manager</b>	Joel Miller
<b>Email</b>	<a href="mailto:Joel.miller@seattle.gov">Joel.miller@seattle.gov</a>
<b>Phone</b>	206-684-7639
<b>Website</b>	N/A

<b>High Level Scope</b>	<p>The project goal is to decrease the likelihood of SOV trips into the area near Westlake Station in Downtown Seattle using <b>wayfinding</b> and <b>placemaking</b> elements, and to understand that change through <b>field observations and survey work</b>. This project also seeks to increase the public's understanding of the Westlake Station area's complex transit operating environment, with the ultimate goal of getting more people to take transit for more trips.</p>
<b>Scope Details</b>	<p><b>Project Tasks</b></p> <p><b>Task 0 Project Management</b></p> <p>This is an ongoing task throughout the duration of the project involving key check-in points and channels for ongoing communication between the Consultant and City. It will include:</p> <ul style="list-style-type: none"><li>• Mutually agreed upon Project Management Plan in writing by end of Week 1, including:<ul style="list-style-type: none"><li>○ Weekly call and bi-weekly in-person meetings</li><li>○ Regular communication channels during business hours (email/phone) with 8-hour response-time during business hours</li><li>○ SDOT Project Manager (SDOT PM) has access to all platforms and repositories used in project development</li><li>○ Consultant to comply with all documentation and invoicing requirements within the solicitation</li><li>○ Stakeholder engagement plan,</li><li>○ Plan to incorporate SDOT feedback at each design phase for Tasks 1-4.</li></ul></li></ul> <p><b>Task 1 Westlake Hub Wayfinding</b></p> <p>Currently, the Westlake Tunnel entrances on Pine St between 3rd and 4th Avenues are relatively inconspicuous set-backs in the adjacent buildings. This wayfinding work is meant to highlight these critical transit connections, while also highlighting connections to other transit facilities, shared mobility options, and local destinations. This work should use lighting and projected features to highlight these</p>







connections. The wayfinding interventions should be located on Pine St. between 3rd and 4th Avenues and can extend to nearby areas.

### **Task 2 Westlake Hub Placemaking**

The Pine St Plaza project, managed by the Downtown Seattle Association, has created a plaza area at these station entrances. This project looks to build upon these successes by creating placemaking elements to be placed in the plaza. These elements should be visually integrated with site elements, and:

1. Highlight the tunnel entrances to increase their visibility and legibility as a major transit hub.
2. Increase seating and table capacity in the Pine St Plaza area. This seating should be integrated with a larger more permanent placemaking structure that can be left on site 24/7.
3. Add a covered, lockable kiosk area for Downtown Seattle Association staff members to interact with the public and provide directions and assistance as necessary, while remaining protected from inclement weather.
4. Protect the plaza area from vehicular traffic. Currently, removable plastic flexi-posts act as a deterrent to keep cars out of the plaza, but these posts are frequently damaged or lost. These placemaking elements should replace the modular function of these posts while providing a more durable solution. They should also enhance the character and sense of space of the area. These modular elements could also replace the planters along the bicycle facility if SDOT chooses this direction.

### **Task 3 Post-installation analysis**

SDOT seeks to study the effectiveness of the wayfinding and placemaking elements by conducting a post-installation analysis. This analysis should be through at least the following two measures:

1. Direct plaza observation - This work should, at a minimum, measure how many people are using the plaza in comparison to before installation using the measures designed by the DSA as part of their stewardship agreement, coordinating with SDOT metrics where appropriate.
2. Intercept survey work – This survey should gain knowledge from Plaza and transit users to understand the effectiveness of the changes. This survey work should be designed in coordination with SDOT to maximize potential gains, but at a minimum, the work must cover the following questions:
  - a. How has the Shared Mobility Hub work changed the likelihood of SOV mode-choice in travelling to or from the project area?
  - b. Do they know where the tunnel entrance is? Would they know before the work was completed?

### **Task 4 Outreach and engagement**

As this work may have a direct impact on nearby private property owners, all necessary outreach and engagement must be completed to obtain the approval of the affected property owners before installation work begins.





City of Seattle  
**Department of Transportation**  
2018 Consulting Opportunities

---

<b>Contract Estimate(s)</b>	\$100,000, may use federal funds

<b>Schedule Summary</b>	Planned Ad: 11/21/2018 Planned Proposal Due: 12/17/2018 Planned Contract Start Date: 02/01/2019 Planned Contract End Date: 06/01/2019
<p>The consultant contract opportunity will be announced on <a href="http://consultants.seattle.gov/">http://consultants.seattle.gov/</a>. The Formal Solicitations are bid through the <b>City of Seattle E-Bid Exchange</b> system.</p> <p>This information is neither a guarantee of contracting opportunities, nor a promise of business and is subject to change. If you have any questions on the prospective projects, please contact the staff person identified for the project.</p>	

DRAFT







## Madison BRT---CM services (2 separate RFQ's)

<b>Project Manager</b>	Mark Sliger
<b>Email</b>	Mark.Sliger@seattle.gov
<b>Phone</b>	(206) 733-9936
<b>Website</b>	N/A

<b>High Level Scope</b>	Provide on-site RE, inspectors, office engineer/document control team to manage the construction of this bus rapid transit project. EE = \$75M ±; duration = 24mo± ; FTA funded
<b>Contracting Opportunities</b>	<p><b>A. Madison BRT (RE/Inspectors only)</b></p> <ul style="list-style-type: none"> <li><u>Scope Summary</u> <ul style="list-style-type: none"> <li>7-9 FTE's ± : one fulltime RE, multiple inspectors; This team will manage the day to day oversight of all contractor work and will report directly to the City's Construction Engineering Supv.(CE); Tentative NTP for construction is Jan 2019 and completion in Dec 2020; (est duration = 24 mo ±)</li> </ul> </li> <li><u>Estimate:</u> <ul style="list-style-type: none"> <li>\$6.5M</li> </ul> </li> </ul> <p><b>B. Madison BRT (Office Engineer/Doc Control only)</b></p> <ul style="list-style-type: none"> <li><u>Scope Summary</u> <ul style="list-style-type: none"> <li>2 FTE's ± : intend to hire an office engineer and document control team separately from the RE/Inspectors but they'll be a part of the overall CM team managing the construction of this project. The SDOT office engineer assigned to this project will provide guidance and oversight to the consultant OE/Doc Control team being hired. Tentative NTP for construction is Jan 2019 and completion in Dec 2020; (est duration = 24 mo ±)</li> </ul> </li> <li><u>Estimate:</u> <ul style="list-style-type: none"> <li>\$1.5M</li> </ul> </li> </ul>
<b>Scope Details</b>	This solicitation will be posted through the City of Seattle E-Bid Exchange portal.
<b>Contract Estimate(s)</b>	RE/Inspector---contract size \$6.5M±; OE/Doc Control---contract size \$1.5M±

<b>Schedule Summary</b>	SDOT is planning to release these solicitations in Q2 2018
<p>The consultant contract opportunity will be announced on <a href="http://consultants.seattle.gov/">http://consultants.seattle.gov/</a>. The Formal Solicitations are bid through the <b>City of Seattle E-Bid Exchange</b> system.</p> <p>This information is neither a guarantee of contracting opportunities, nor a promise of business and is subject to change. If you have any questions on the prospective projects, please contact the staff person identified for the project.</p>	



**OFFICE OF THE WATERFRONT**  
**Upcoming Contracting Opportunities**

Listing updated August 2017



waterfrontseattle.org  
 info@waterfrontseattle.org  
 (206) 499-8040

Project Name	Engineer's Estimate	Estimated Ad Date	Contact	Project Description	Flagging, Traffic Control	Demolition, Remediation	Excavation, Grading, Site Work	Shoring, Dewatering	Trucking	Concrete Roadway	Concrete Sidewalk, Curb Ramps	Specialty Finishes	Asphalt	Bridges, Retaining Walls	Structural Foundations	Building Construction	Over Water Work, Barging	Elevators	Drainage, Water Infrastructure	Electrical, Signals, Lighting	Channelization, Signage	Landscaping, Irrigation	Archeological Monitoring	Fencing, Site Security	Site Furnishings
<b>CONSTRUCTION</b>																									
<b>13.8 kV Network Relocation</b> [Joint project between Office of the Waterfront and Seattle City Light]	\$4M	Q4 2017	Barbara Lee (206) 615-1696	Advanced utility work related to the Waterfront Main Corridor project that will rebuild Alaskan Way and new Elliott Way.	X		X	X	X	X			X							X					
<b>Building Demolition</b>	\$100K	Q2 2018	Barbara Lee (206) 615-1696	Demolish existing building on Alaskan Way		X	X		X															X	
<b>Alaskan Way Main Corridor and Utility Work</b>	\$175 – 200M	Q4 2018	Barbara Lee (206) 615-1696	Rebuild Alaskan Way, new Elliott Way roadway, and connections to east-west streets (Columbia St, Seneca St, & Lenora St) to serve all modes of travel, and install new landscaped promenade along the waterfront. Includes utility work for Seattle City Light, Seattle Public Utilities, and private utilities.	X		X	X	X	X	X	X	X	X	X				X	X	X	X	X		X
<b>Union St Pedestrian Connection</b>	\$5 – 10M	Q2 2019	Angela Brady (206) 684-3115	A new pedestrian bridge connection on Union St between Western Avenue and Alaskan Way.	X		X	X	X			X		X	X			X	X	X	X	X		X	X
<b>Pike and Pine Streetscape Improvements</b>	\$10 – 15M	Q3 2019	Steve Pearce (206) 684-8371	Streetscape improvements along Pike St and Pine St	X		X	X	X	X	X	X	X						X	X	X	X			X
<b>Waterfront Park</b> [Joint project between Office of the Waterfront and Seattle Parks]	\$35 – 45M	Q4 2019	Kit Loo (206) 684-3669	Redesigned park on Union St Pier with new playground and water feature	X	X			X								X		X	X	X	X		X	X
<b>Overlook Walk</b> [Portions of contract may use General Contractor/Construction Manager method]	TBD	Q2 2020	Jessica Murphy (206) 684-0178	A new accessible bridge and building connection between Pike Place Market and the waterfront	X		X	X	X		X	X		X	X	X		X	X	X	X	X			X
<b>Pioneer Square Street Improvements</b>	\$8 – 10M	Q3 2020	Angela Brady (206) 684-3115	Streetscape improvements on several east-west streets in Pioneer Square	X		X	X	X	X	X	X	X						X	X	X	X			X
<b>DESIGN</b>																									
<b>Bell Street</b>	\$1.5 – 2M	Q1 2018	Angela Brady (206) 684-3115	Extension of the Bell Street Park between 1st Ave and Elliott Ave	X		X	X	X	X	X	X	X						X	X	X	X			X
<b>Pioneer Square Street Improvements</b>	\$2 – 4M	Q1 2018	Angela Brady (206) 684-3115	Streetscape improvements on several east-west streets in Pioneer Square	X		X	X	X	X	X	X	X						X	X	X	X			X

Disclaimer: This information is neither a guarantee of contracting opportunities, nor a promise of business and is subject to change. If you have any questions on the prospective projects, please contact the staff person identified for the project.

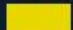
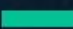







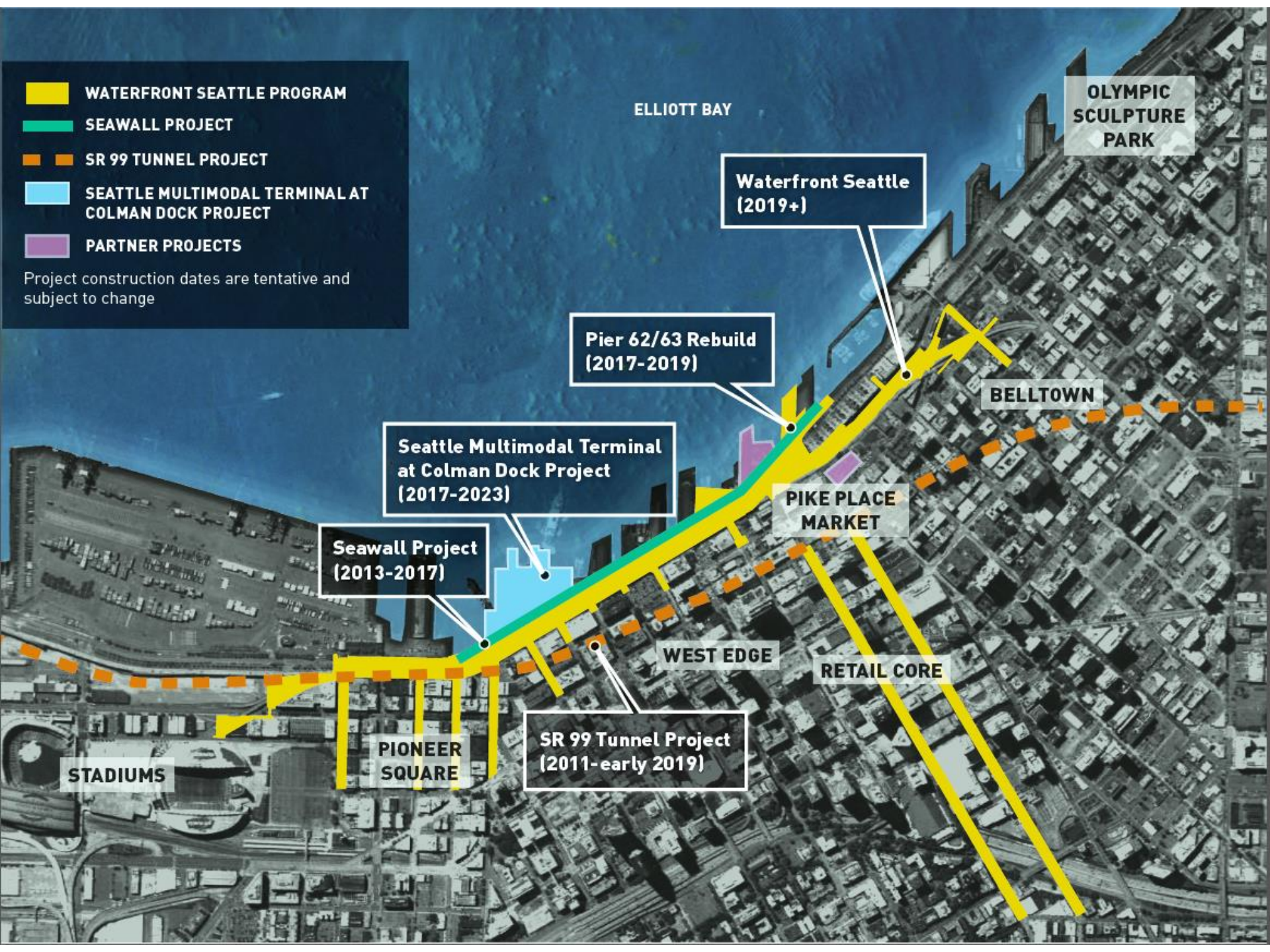
# CONSTRUCTION SHOWCASE

September 29, 2017



-  WATERFRONT SEATTLE PROGRAM
-  SEAWALL PROJECT
-  SR 99 TUNNEL PROJECT
-  SEATTLE MULTIMODAL TERMINAL AT COLMAN DOCK PROJECT
-  PARTNER PROJECTS

Project construction dates are tentative and subject to change



ELLIOTT BAY

OLYMPIC  
SCULPTURE  
PARK

Waterfront Seattle  
(2019+)

Pier 62/63 Rebuild  
(2017-2019)

Seattle Multimodal Terminal  
at Colman Dock Project  
(2017-2023)

Seawall Project  
(2013-2017)

BELLTOWN

PIKE PLACE  
MARKET

WEST EDGE

RETAIL CORE

SR 99 Tunnel Project  
(2011-early 2019)

PIONEER  
SQUARE

STADIUMS



# WATERFRONT SEATTLE PROGRAM



## RAILROAD WAY

- 1 WATERFRONT
- 2 PIONEER SQUARE
- 3 STADIUMS

## PIONEER SQUARE

- 1 ALASKAN WAY
- 2 WATERFRONT PROMENADE
- 3 WASHINGTON ST. BOAT LANDING
- 4 S. KING ST.
- 5 S. MAIN ST.
- 6 S. WASHINGTON ST.
- 7 HABITAT INTERTIDAL ZONE

## TRANSIT HUB

- 1 ALASKAN WAY
- 2 WATERFRONT PROMENADE
- 3 COLUMBIA ST.
- 4 MARION ST. PEDESTRIAN BRIDGE
- 5 COLMAN DOCK TERMINAL REPLACEMENT
- 6 YESLER WAY

## HISTORIC PIERS

- 1 ALASKAN WAY
- 2 WATERFRONT PROMENADE
- 3 SENECA ST.

## CENTRAL PUBLIC SPACE

- 1 ELLIOTT WAY
- 2 WATERFRONT PROMENADE
- 3 UNION ST.
- 4 WATERFRONT PARK REBUILD
- 5 OCEAN PAVILION
- 6 PIERS 62/63 PHASE 1 REBUILD
- 7 OVERLOOK WALK
- 8 PIKE/PINE STS.

## BELLTOWN

- 1 ELLIOTT WAY
- 2 LENORA ST. PED BRIDGE RETROFIT
- 3 BELL ST.
- 4 PORTAL PARK



# NEAR-TERM CONSTRUCTION CONTRACTING OPPORTUNITIES



- 13.8 kV Network Relocation Project
  - \$4M estimate
  - Anticipated advertisement date: Q4 2017
  - Anticipated construction start: Q1 2018
- Building Demolition Project
  - \$100K estimate
  - Anticipated advertisement date: Q2 2018
  - Anticipated construction start: mid-2018

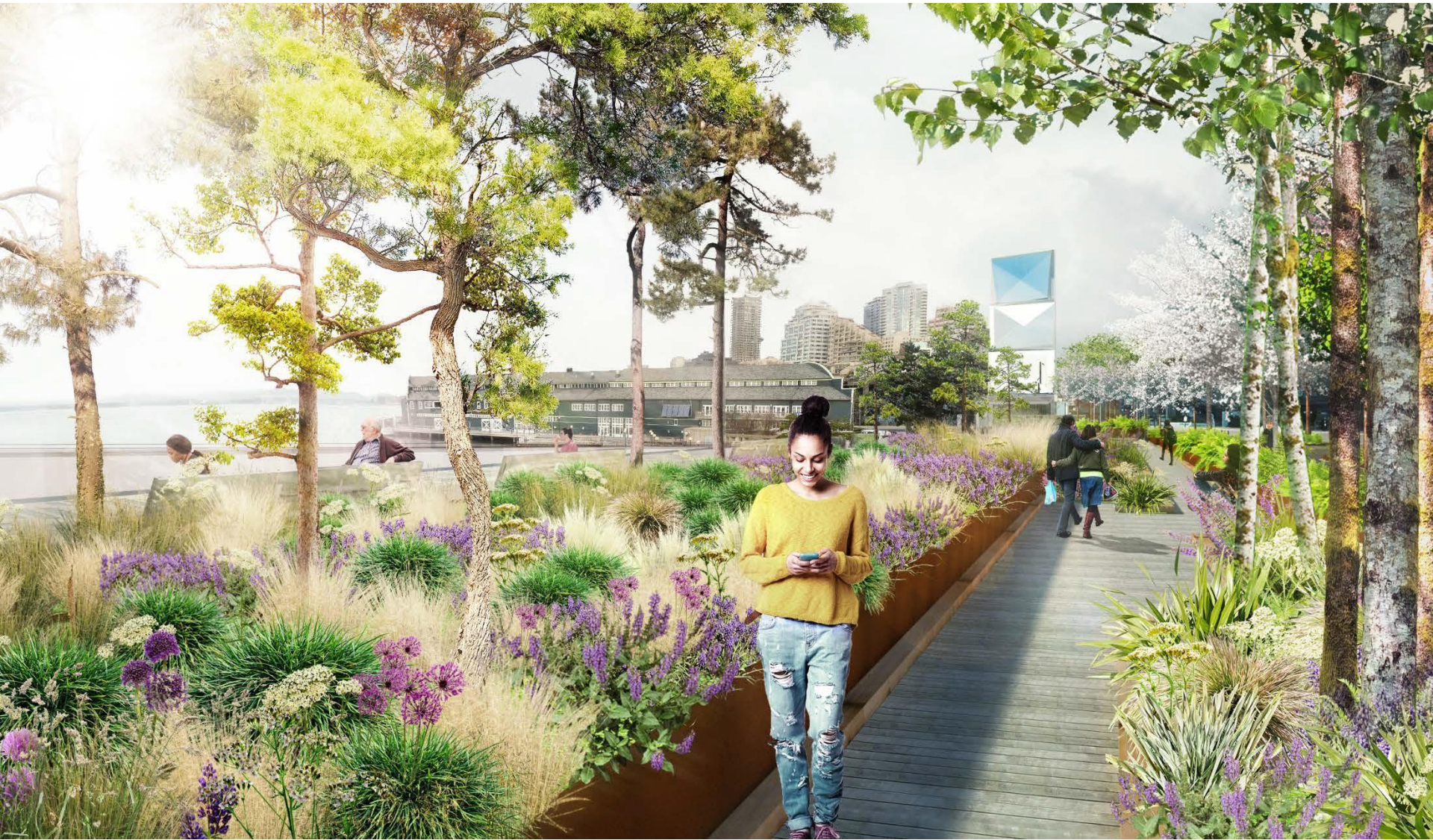


# MAIN CORRIDOR



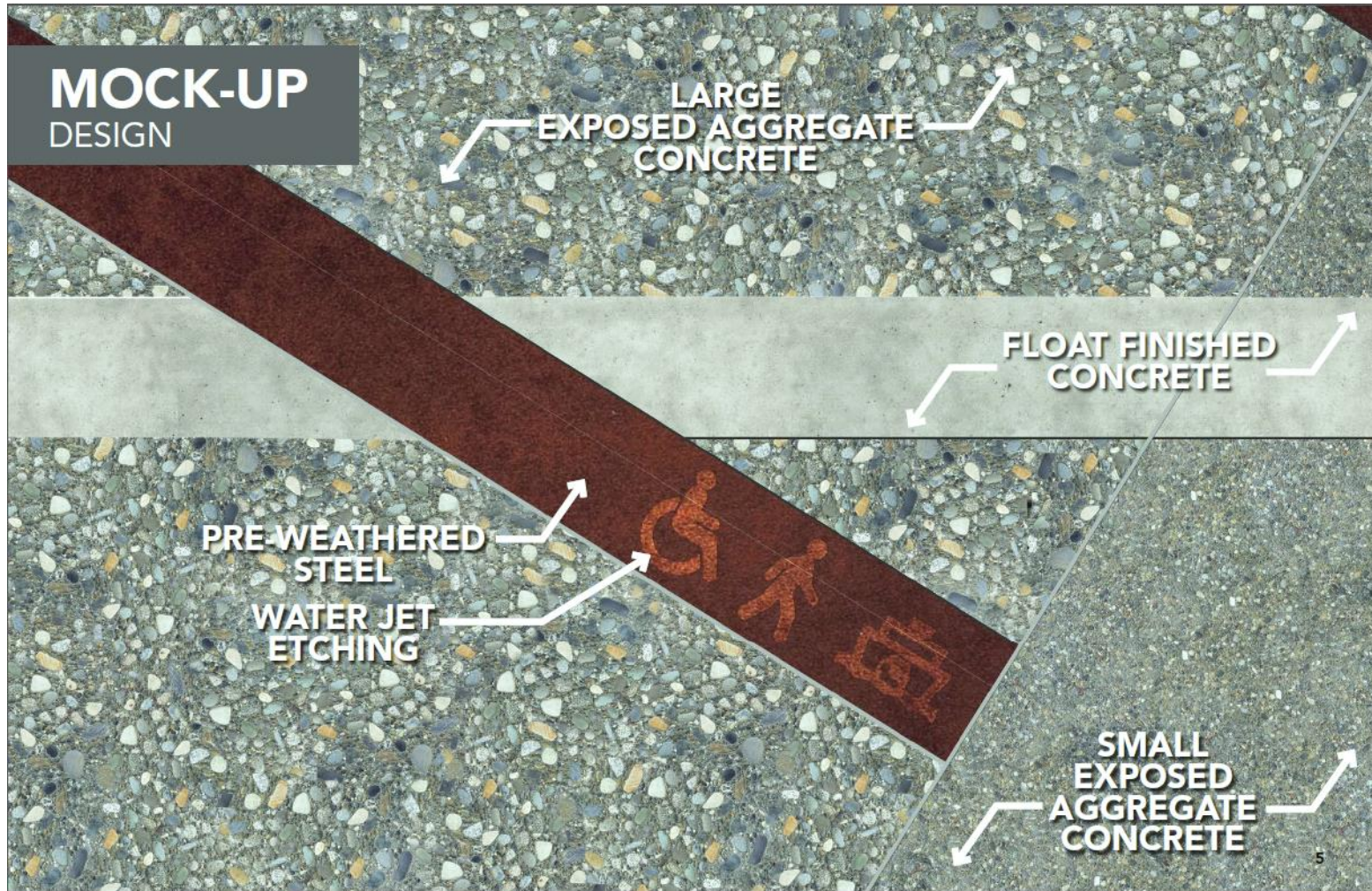


# PROMENADE



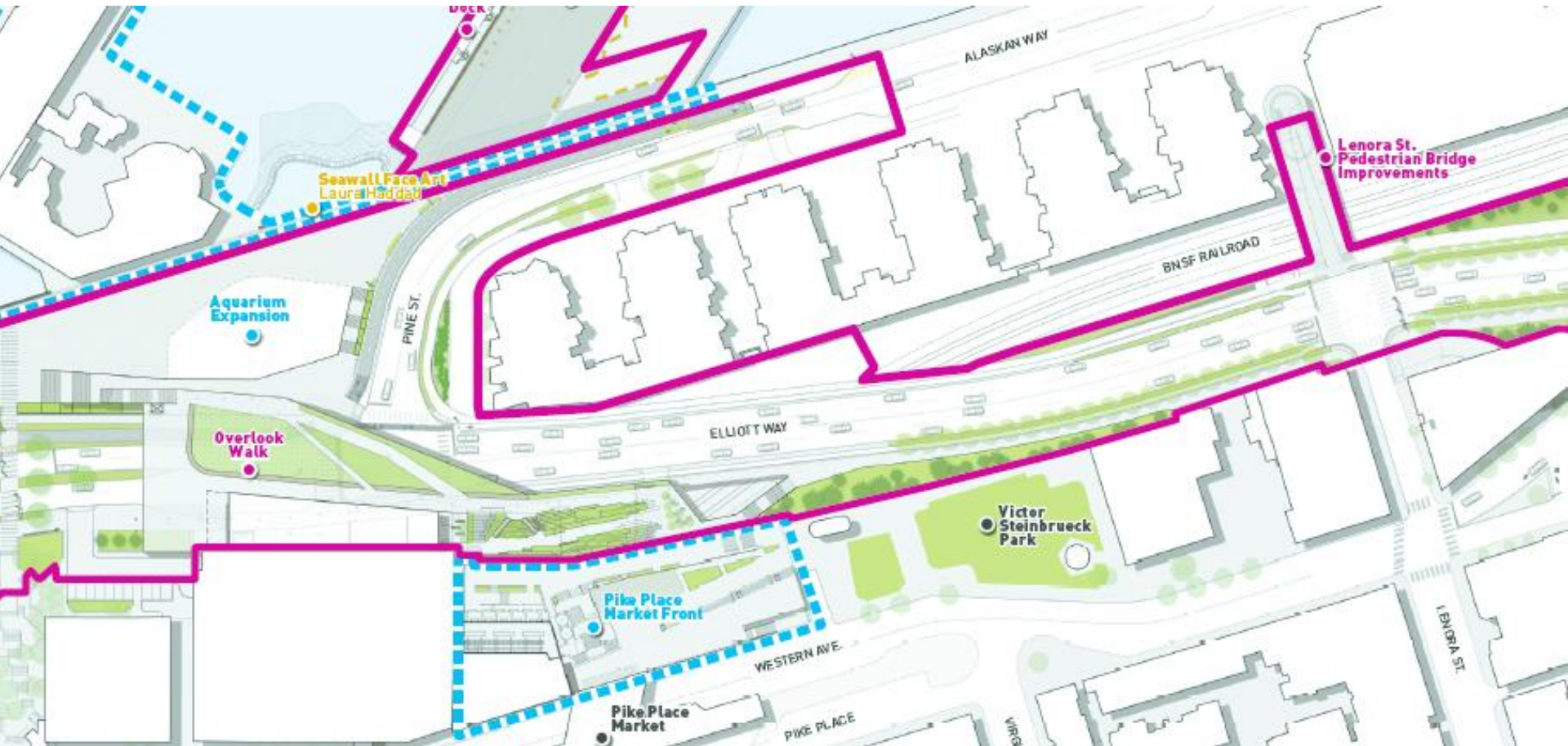


# DECORATIVE PAVEMENT





# BRIDGE WORK





# OVERLOOK WALK





# EAST-WEST CONNECTIONS





# WATERFRONT PARK



# CONSTRUCTION SCHEDULE



	2017	2018	2019	2020	2021	2022	2023
<b>WSDOT PROJECTS</b>							
Bored Tunnel			◆ Tunnel open to traffic, early 2019				
Alaskan Way Viaduct Demolition							
Battery St Tunnel decommission							
South Access							
Colman Dock							
<b>WATERFRONT SEATTLE PROJECTS</b>							
Pier 62 Rebuild & Habitat Imp.							
Early Works							
Alaskan Way & Elliott Way					◆ New Alaskan & Elliott Way open to traffic, July		
Promenade							
East/West Connections							
Overlook Walk							
Waterfront Park							
Marion Street Bridge*							
<b>OTHER CONSTRUCTION PROJECTS</b>							
Center City Connector							
WA State Convention Center							
Lander St Overpass							
Aquarium Expansion							

## NOTES:

- 1) Early Works may include: Columbia St drainage & areaway work, SCL vaults & duct banks, telecom work, building demolition, etc.
  - 2) Alaskan Way & Elliott Way includes: connections to Columbia St, Seneca St, Pine St, and Lenora St; Overlook Walk Foundations; Marion St Bridge Foundations; and Kiosk Foundations.
  - 3) East/West Connections include: Bell St, Union St Pedestrian Connection, Main and Washington Street Improvements, Pike and Pine Streetscape Improvements
  - 4) Construction dates subject to change pending: a) Tunnel & AWW Demolition completion dates and, b) Ongoing evaluation of sequencing and packaging assumptions for all projects.
- \*Whether WSDOT or City will construct the Marion Street Bridge project is still under deliberation.