



Westlake Shared Mobility Hub Wayfinding and Placemaking Project

Project Manager	Joel Miller
Email	Joel.miller@seattle.gov
Phone	206-684-7639
Website	N/A

High Level Scope	<p>The project goal is to decrease the likelihood of SOV trips into the area near Westlake Station in Downtown Seattle using wayfinding and placemaking elements, and to understand that change through field observations and survey work. This project also seeks to increase the public's understanding of the Westlake Station area's complex transit operating environment, with the ultimate goal of getting more people to take transit for more trips.</p>
Scope Details	<p>Project Tasks</p> <p>Task 0 Project Management</p> <p>This is an ongoing task throughout the duration of the project involving key check-in points and channels for ongoing communication between the Consultant and City. It will include:</p> <ul style="list-style-type: none">• Mutually agreed upon Project Management Plan in writing by end of Week 1, including:<ul style="list-style-type: none">○ Weekly call and bi-weekly in-person meetings○ Regular communication channels during business hours (email/phone) with 8-hour response-time during business hours○ SDOT Project Manager (SDOT PM) has access to all platforms and repositories used in project development○ Consultant to comply with all documentation and invoicing requirements within the solicitation○ Stakeholder engagement plan,○ Plan to incorporate SDOT feedback at each design phase for Tasks 1-4. <p>Task 1 Westlake Hub Wayfinding</p> <p>Currently, the Westlake Tunnel entrances on Pine St between 3rd and 4th Avenues are relatively inconspicuous set-backs in the adjacent buildings. This wayfinding work is meant to highlight these critical transit connections, while also highlighting connections to other transit facilities, shared mobility options, and local destinations. This work should use lighting and projected features to highlight these</p>





connections. The wayfinding interventions should be located on Pine St. between 3rd and 4th Avenues and can extend to nearby areas.

Task 2 Westlake Hub Placemaking

The Pine St Plaza project, managed by the Downtown Seattle Association, has created a plaza area at these station entrances. This project looks to build upon these successes by creating placemaking elements to be placed in the plaza. These elements should be visually integrated with site elements, and:

1. Highlight the tunnel entrances to increase their visibility and legibility as a major transit hub.
2. Increase seating and table capacity in the Pine St Plaza area. This seating should be integrated with a larger more permanent placemaking structure that can be left on site 24/7.
3. Add a covered, lockable kiosk area for Downtown Seattle Association staff members to interact with the public and provide directions and assistance as necessary, while remaining protected from inclement weather.
4. Protect the plaza area from vehicular traffic. Currently, removable plastic flexi-posts act as a deterrent to keep cars out of the plaza, but these posts are frequently damaged or lost. These placemaking elements should replace the modular function of these posts while providing a more durable solution. They should also enhance the character and sense of space of the area. These modular elements could also replace the planters along the bicycle facility if SDOT chooses this direction.

Task 3 Post-installation analysis

SDOT seeks to study the effectiveness of the wayfinding and placemaking elements by conducting a post-installation analysis. This analysis should be through at least the following two measures:

1. Direct plaza observation - This work should, at a minimum, measure how many people are using the plaza in comparison to before installation using the measures designed by the DSA as part of their stewardship agreement, coordinating with SDOT metrics where appropriate.
2. Intercept survey work – This survey should gain knowledge from Plaza and transit users to understand the effectiveness of the changes. This survey work should be designed in coordination with SDOT to maximize potential gains, but at a minimum, the work must cover the following questions:
 - a. How has the Shared Mobility Hub work changed the likelihood of SOV mode-choice in travelling to or from the project area?
 - b. Do they know where the tunnel entrance is? Would they know before the work was completed?

Task 4 Outreach and engagement

As this work may have a direct impact on nearby private property owners, all necessary outreach and engagement must be completed to obtain the approval of the affected property owners before installation work begins.





City of Seattle
Department of Transportation
2018 Consulting Opportunities

Contract Estimate(s)	\$100,000, may use federal funds

Schedule Summary	Planned Ad: 11/21/2018 Planned Proposal Due: 12/17/2018 Planned Contract Start Date: 02/01/2019 Planned Contract End Date: 06/01/2019
<p>The consultant contract opportunity will be announced on http://consultants.seattle.gov/. The Formal Solicitations are bid through the City of Seattle E-Bid Exchange system.</p> <p>This information is neither a guarantee of contracting opportunities, nor a promise of business and is subject to change. If you have any questions on the prospective projects, please contact the staff person identified for the project.</p>	

DRAFT



SDOT UPCOMING CONSULTANT OPPORTUNITIES

Listing Updated Quarterly



Projects	Description	Design Consultant Opportunities	Construction Management Opportunities	Outreach Consultant Opportunities During Design	Outreach Consultant Opportunities During Construction	Planning	Other	Project Manager
Bicycle/Multi-Modal On-Call Design Services	Provide design services to support the preliminary engineering, PS&E production, and construction of SDOT CIPs to expand Seattle's bicycle facility network. Projects will likely include Neighborhood Greenways, Protected Bike Lanes, and Multi-Use trails.	Q4 2018						Peter Trinh peter.trinh@seattle.gov 206-615-0929
Consultant Contracting Accessible Mount Baker	The Accessible Mt. Baker Plan will transform an auto-oriented area into a pedestrian and transit-oriented destination that is safe for everyone. The Plan will reconfigure the intersection of Rainier Ave South (Rainier Ave) and Martin Luther King, Jr. Way (MLK Way) and transform the Mt. Baker station area into a safe, comfortable and dignified place for people to walk, bike, and make transit connections. This contract will be for design services and design support during construction.	completed	2022-23	N/A	2022-23	N/A	N/A	Therese Casper therese.casper@seattle.gov 206-684-8764
Fremont RapidRide Planing, Design & Environmental	Zero to 30% planning, design and environmental for the Fremont RapidRide Corridor (a Seattle RapidRide Expansion Program corridor) with the provision for amending the contract to include all services associate with completing 60%, 90% and 100% design milestones. Work may include traffic analysis, traffic modeling, signals & ITS, and multimodal design. There is the potential for this corridor to be federally funded.	Q4 2018						Alison Townsend alison.townsend@seattle.gov 206-233-3780
Madison BRT --- CM Services	Provide on-site RE, inspectors, office engineer/document control team to manage the construction of this bus rapid transit project. A. Madison BRT (RE/Inspectors only) B. Madison BRT (Office Engineer/Doc Control only)		Q1 2019					Mark Sliger mark.sliger@seattle.gov 206-733-9936
New CM On-Call Contracts	6 non-Federal contracts. \$6M each contract.		Q4 2018					Mark Sliger mark.sliger@seattle.gov 206-733-9936
ITS Design and Signal Timing and Modeling Consultant Support	SDOT seeks a skilled Consultant available for immediate work in support of the timely and cost-efficient delivery of the Move Seattle ITS program, and ITS projects across SDOT. The goal of this consultant solicitation to identify and retain a highly capable consulting teams with exceptional skills, experience, availability and the flexibility to all phases of ITS projects in support of the timely and cost-efficient delivery of the Move Seattle ITS program.						Q4 2018	Adiam Emery adiam.emery@seattle.gov 206-684-5121

Disclaimer: This information is neither a guarantee of contracting opportunities, nor a promise of business and is subject to change. If you have any questions on the prospective projects, please contact the staff person identified for the project.

Disclaimer: Updated 10/2018.This information is neither a guarantee of contracting opportunities, nor a promise of business and is subject to change. If you have any questions on the prospective projects, please contact the staff person identified for the project. Visit the SDOT WMBE website for the most up-to-date information at www.seattle.gov/transportation/oeei-wmbe or contact the SDOT Office of Equity and Economic Inclusion Interim WMBE Advisor, Viviana Y. Garza at viviana.garza@seattle.gov.

Projects	Description	Design Consultant Opportunities	Construction Management Opportunities	Outreach Consultant Opportunities During Design	Outreach Consultant Opportunities During Construction	Planning	Other	Project Manager
UW MICMA Program Manager and Evaluation Consultant Support	SDOT seeks a skilled Consultant available for immediate work to ensure that the UW MICMA ITS project meets the FHWA grant requirements, including evaluation, and to support the successful completion of the project.						Q4 2018	Adiam Emery adiam.emery@seattle.gov 206-684-5121
Roster Solicitation: Vision Zero Messaging Focus Groups	Conduct focus groups to inform messaging development and strategic communications efforts related to our Vision Zero program to end traffic deaths and serious injuries on city streets by 2030.						Q4 2018	Allison Schwartz allison.schwartz@seattle.gov 206-386-4654
Ballard Bridge Planning Study	The Ballard Bridge is over 100 years old and carries more than 57,000 vehicles per day. This planning study would explore alternatives and identify a recommended replacement alternative and associated costs. Regarding the recommended alternative, this study should identify the: essential functional needs, right-of-way needs, types of environmental permitting required, and ways to minimize impact to the navigable channel and 15th Ave W corridor traffic.	completed				Q4 2018 - Q2 2019		Wes Ducey wes.ducey@seattle.gov 206-684-7033
Fairview Ave N Bridge Replacement	Provide construction communications and outreach services for the length of construction and project closeout, approximately 15 months. Construction is scheduled to begin in late 2018 and will include temporary closure of the bridge. This will be a federally-funded project				Q4 2018			Marilyn Yim marilyn.yim@seattle.gov 206-684-3190

Disclaimer: This information is neither a guarantee of contracting opportunities, nor a promise of business and is subject to change. If you have any questions on the prospective projects, please contact the staff person identified for the project.

Disclaimer: Updated 10/2018.This information is neither a guarantee of contracting opportunities, nor a promise of business and is subject to change. If you have any questions on the prospective projects, please contact the staff person identified for the project. Visit the SDOT WMBE website for the most up-to-date information at www.seattle.gov/transportation/oeei-wmbe or contact the SDOT Office of Equity and Economic Inclusion Interim WMBE Advisor, Viviana Y. Garza at viviana.garza@seattle.gov.



UW MICMA Program Manager and Evaluation Consultant Support

Project Manager	Adiam Emery
Email	Adiam.Emery@seattle.gov
Phone	(206) 684-5121
Website	N/A

High Level Scope	SDOT seeks a skilled Consultant available for immediate work to ensure that the UW MICMA ITS project meets the FHWA grant requirements, including evaluation, and to support the successful completion of the project.
Contracting Opportunities (1)	This contracting opportunity is anticipated to be released as stand-alone, full solicitation. The solicitation will be posted through the City of Seattle E-Bid Exchange portal.
Scope Details	<p>SDOT has identified the following Core Services in this Scope of Work:</p> <ul style="list-style-type: none">• Developing and applying means to monitor the project progress and schedule, including budgetary progress.• Deliver and execute a pro-active risk identification and avoidance or mitigation strategy.• Proactively track project progress.• Supporting SDOT's monthly progress reporting.• Support in developing RFPs/RFQs, and goods procurement documents.• Facilitating issue resolution, including proposing resolution approaches.• Other tasks directly related to Program Management of the UW MICMA ITS project, which may include assessing resource needs, developing presentations for upper management, and coordination with other Divisions/Departments.• Develop scope of services for project evaluation, including coordination with FHWA.• Create a data collection plan and oversee data collection by SDOT and others.• Provide staff to conduct certain aspects of the data collection, to include pedestrian counting to confirm pedestrian detection system, and monitoring of signal operations response to GiveMeGreen and associated cyclist behaviors.• Conduct evaluation, to include statistical analysis of data, and reporting.
Contract Estimate(s)	Approximately \$500,000.

Schedule Summary	SDOT is looking to release this in September 2018
The consultant contract opportunity will be announced on http://consultants.seattle.gov/ . The Formal Solicitations are bid through the City of Seattle E-Bid Exchange system.	





ITS Design and Signal Timing and Modeling Consultant Support

Project Manager	Adiam Emery
Email	Adiam.Emery@seattle.gov
Phone	(206) 684-5121
Website	N/A

High Level Scope	SDOT seeks a skilled Consultant available for immediate work in support of the timely and cost-efficient delivery of the Move Seattle ITS program, and ITS projects across SDOT. The goal of this consultant solicitation to identify and retain a highly capable consulting teams with exceptional skills, experience, availability and the flexibility to all phases of ITS projects in support of the timely and cost-efficient delivery of the Move Seattle ITS program.
Contracting Opportunities (1)	This contracting opportunity is anticipated to be released as stand-alone, full solicitation. The solicitation will be posted through the City of Seattle E-Bid Exchange portal.
Scope Details	SDOT has identified the following Core Services in this Scope of Work: <ul style="list-style-type: none">• Developing ITS Plans, Specifications and Estimates (PS&E) packages for bid by private contractors.• Developing work orders detailing ITS field designs for implementation by SDOT forces.• VISSIM modeling for the purpose of signal timing plan development• Synchro modeling for the purpose of signal timing plan development• SCOOT timing plan development• Other traffic signal timing plan development including coordinated and traffic responsive plans.
Contract Estimate(s)	Approximately \$900,000.

Schedule Summary	SDOT is looking to release this in September 2018
<p>The consultant contract opportunity will be announced on http://consultants.seattle.gov/. The Formal Solicitations are bid through the City of Seattle E-Bid Exchange system. This information is neither a guarantee of contracting opportunities, nor a promise of business and is subject to change. If you have any questions on the prospective projects, please contact the staff person identified for the project.</p>	





Madison BRT---CM services (2 separate RFQ's)

Project Manager	Mark Sliger
Email	Mark.Sliger@seattle.gov
Phone	(206) 733-9936
Website	N/A

High Level Scope	Provide on-site RE, inspectors, office engineer/document control team to manage the construction of this bus rapid transit project. EE = \$75M ±; duration = 24mo± ; FTA funded
Contracting Opportunities	<p>A. Madison BRT (RE/Inspectors only)</p> <ul style="list-style-type: none"> <u>Scope Summary</u> <ul style="list-style-type: none"> 7-9 FTE's ± : one fulltime RE, multiple inspectors; This team will manage the day to day oversight of all contractor work and will report directly to the City's Construction Engineering Supv.(CE); Tentative NTP for construction is Jan 2019 and completion in Dec 2020; (est duration = 24 mo ±) <u>Estimate:</u> <ul style="list-style-type: none"> \$6.5M <p>B. Madison BRT (Office Engineer/Doc Control only)</p> <ul style="list-style-type: none"> <u>Scope Summary</u> <ul style="list-style-type: none"> 2 FTE's ± : intend to hire an office engineer and document control team separately from the RE/Inspectors but they'll be a part of the overall CM team managing the construction of this project. The SDOT office engineer assigned to this project will provide guidance and oversight to the consultant OE/Doc Control team being hired. Tentative NTP for construction is Jan 2019 and completion in Dec 2020; (est duration = 24 mo ±) <u>Estimate:</u> <ul style="list-style-type: none"> \$1.5M
Scope Details	This solicitation will be posted through the City of Seattle E-Bid Exchange portal.
Contract Estimate(s)	RE/Inspector---contract size \$6.5M±; OE/Doc Control---contract size \$1.5M±

Schedule Summary	SDOT is planning to release these solicitations in Q2 2018
<p>The consultant contract opportunity will be announced on http://consultants.seattle.gov/. The Formal Solicitations are bid through the City of Seattle E-Bid Exchange system.</p> <p>This information is neither a guarantee of contracting opportunities, nor a promise of business and is subject to change. If you have any questions on the prospective projects, please contact the staff person identified for the project.</p>	



OFFICE OF THE WATERFRONT
Upcoming Contracting Opportunities

Listing updated August 2017



waterfrontseattle.org
 info@waterfrontseattle.org
 (206) 499-8040

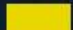
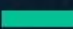



Project Name	Engineer's Estimate	Estimated Ad Date	Contact	Project Description	Flagging, Traffic Control	Demolition, Remediation	Excavation, Grading, Site Work	Shoring, Dewatering	Trucking	Concrete Roadway	Concrete Sidewalk, Curb Ramps	Specialty Finishes	Asphalt	Bridges, Retaining Walls	Structural Foundations	Building Construction	Over Water Work, Barging	Elevators	Drainage, Water Infrastructure	Electrical, Signals, Lighting	Channelization, Signage	Landscaping, Irrigation	Archeological Monitoring	Fencing, Site Security	Site Furnishings
CONSTRUCTION																									
13.8 kV Network Relocation [Joint project between Office of the Waterfront and Seattle City Light]	\$4M	Q4 2017	Barbara Lee (206) 615-1696	Advanced utility work related to the Waterfront Main Corridor project that will rebuild Alaskan Way and new Elliott Way.	X		X	X	X	X			X							X					
Building Demolition	\$100K	Q2 2018	Barbara Lee (206) 615-1696	Demolish existing building on Alaskan Way		X	X		X															X	
Alaskan Way Main Corridor and Utility Work	\$175 – 200M	Q4 2018	Barbara Lee (206) 615-1696	Rebuild Alaskan Way, new Elliott Way roadway, and connections to east-west streets (Columbia St, Seneca St, & Lenora St) to serve all modes of travel, and install new landscaped promenade along the waterfront. Includes utility work for Seattle City Light, Seattle Public Utilities, and private utilities.	X		X	X	X	X	X	X	X	X	X				X	X	X	X	X		X
Union St Pedestrian Connection	\$5 – 10M	Q2 2019	Angela Brady (206) 684-3115	A new pedestrian bridge connection on Union St between Western Avenue and Alaskan Way.	X		X	X	X			X		X	X			X	X	X	X	X		X	X
Pike and Pine Streetscape Improvements	\$10 – 15M	Q3 2019	Steve Pearce (206) 684-8371	Streetscape improvements along Pike St and Pine St	X		X	X	X	X	X	X	X						X	X	X	X			X
Waterfront Park [Joint project between Office of the Waterfront and Seattle Parks]	\$35 – 45M	Q4 2019	Kit Loo (206) 684-3669	Redesigned park on Union St Pier with new playground and water feature	X	X			X								X		X	X	X	X		X	X
Overlook Walk [Portions of contract may use General Contractor/Construction Manager method]	TBD	Q2 2020	Jessica Murphy (206) 684-0178	A new accessible bridge and building connection between Pike Place Market and the waterfront	X		X	X	X		X	X		X	X	X		X	X	X	X	X			X
Pioneer Square Street Improvements	\$8 – 10M	Q3 2020	Angela Brady (206) 684-3115	Streetscape improvements on several east-west streets in Pioneer Square	X		X	X	X	X	X	X	X						X	X	X	X			X
DESIGN																									
Bell Street	\$1.5 – 2M	Q1 2018	Angela Brady (206) 684-3115	Extension of the Bell Street Park between 1st Ave and Elliott Ave	X		X	X	X	X	X	X	X						X	X	X	X			X
Pioneer Square Street Improvements	\$2 – 4M	Q1 2018	Angela Brady (206) 684-3115	Streetscape improvements on several east-west streets in Pioneer Square	X		X	X	X	X	X	X	X						X	X	X	X			X

Disclaimer: This information is neither a guarantee of contracting opportunities, nor a promise of business and is subject to change. If you have any questions on the prospective projects, please contact the staff person identified for the project.

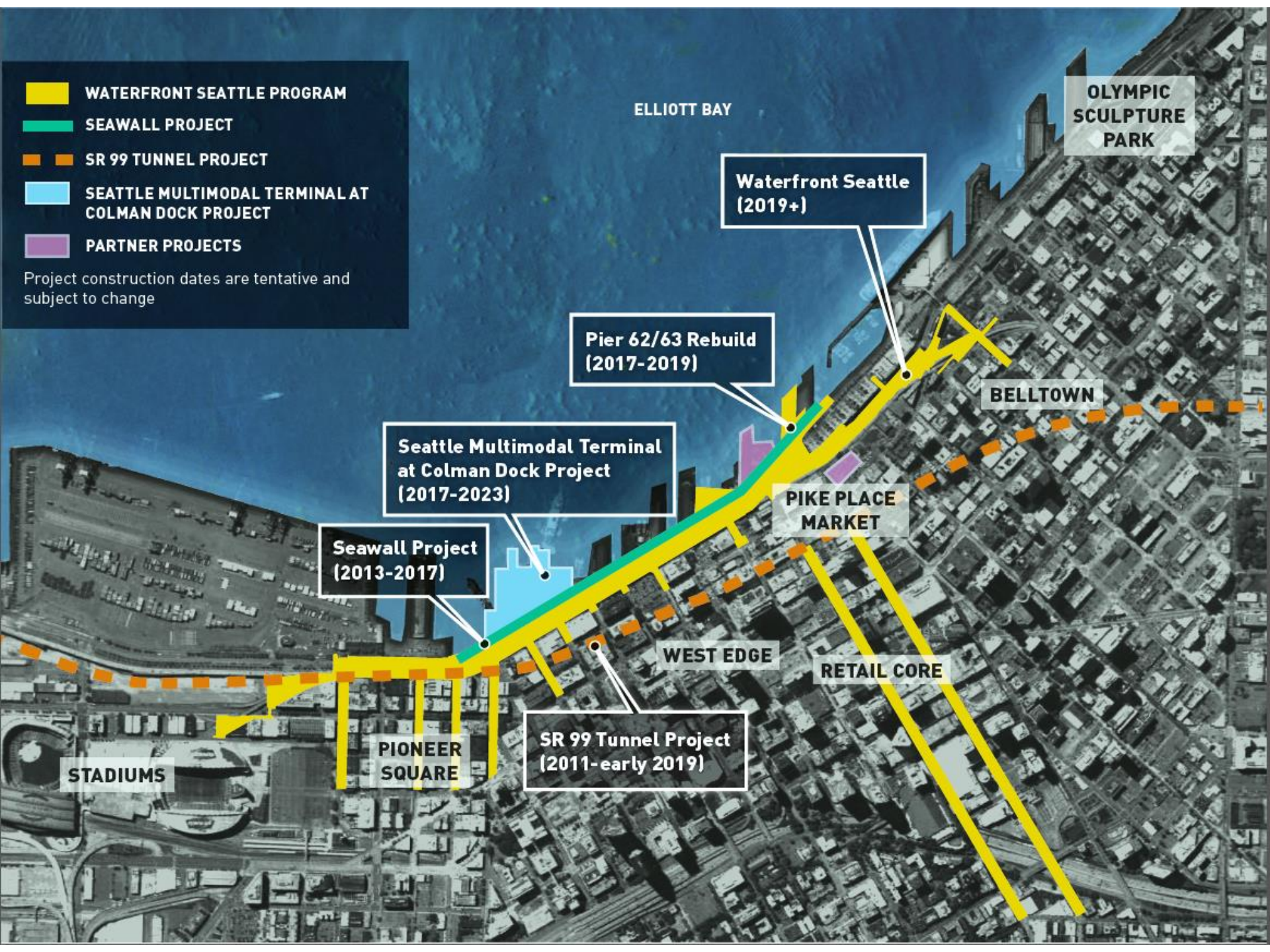


CONSTRUCTION SHOWCASE

September 29, 2017

-  WATERFRONT SEATTLE PROGRAM
-  SEAWALL PROJECT
-  SR 99 TUNNEL PROJECT
-  SEATTLE MULTIMODAL TERMINAL AT COLMAN DOCK PROJECT
-  PARTNER PROJECTS

Project construction dates are tentative and subject to change



ELLIOTT BAY

OLYMPIC
SCULPTURE
PARK

Waterfront Seattle
(2019+)

Pier 62/63 Rebuild
(2017-2019)

Seattle Multimodal Terminal
at Colman Dock Project
(2017-2023)

Seawall Project
(2013-2017)

PIKE PLACE
MARKET

BELLTOWN

WEST EDGE

RETAIL CORE

SR 99 Tunnel Project
(2011-early 2019)

PIONEER
SQUARE

STADIUMS

WATERFRONT SEATTLE PROGRAM



RAILROAD WAY	PIONEER SQUARE	TRANSIT HUB	HISTORIC PIERS	CENTRAL PUBLIC SPACE	BELLTOWN
<ul style="list-style-type: none"> 1 WATERFRONT 2 PIONEER SQUARE 3 STADIUMS 	<ul style="list-style-type: none"> 1 ALASKAN WAY 2 WATERFRONT PROMENADE 3 WASHINGTON ST. BOAT LANDING 4 S. KING ST. 5 S. MAIN ST. 6 S. WASHINGTON ST. 7 HABITAT INTERTIDAL ZONE 	<ul style="list-style-type: none"> 1 ALASKAN WAY 2 WATERFRONT PROMENADE 3 COLUMBIA ST. 4 MARION ST. PEDESTRIAN BRIDGE 5 COLMAN DOCK TERMINAL REPLACEMENT 6 YESLER WAY 	<ul style="list-style-type: none"> 1 ALASKAN WAY 2 WATERFRONT PROMENADE 3 SENECA ST. 	<ul style="list-style-type: none"> 1 ELLIOTT WAY 2 WATERFRONT PROMENADE 3 UNION ST. 4 WATERFRONT PARK REBUILD 5 OCEAN PAVILION 6 PIERS 62/63 PHASE 1 REBUILD 7 OVERLOOK WALK 8 PIKE/PINE STS. 	<ul style="list-style-type: none"> 1 ELLIOTT WAY 2 LENORA ST. PED BRIDGE RETROFIT 3 BELL ST. 4 PORTAL PARK

NEAR-TERM CONSTRUCTION CONTRACTING OPPORTUNITIES

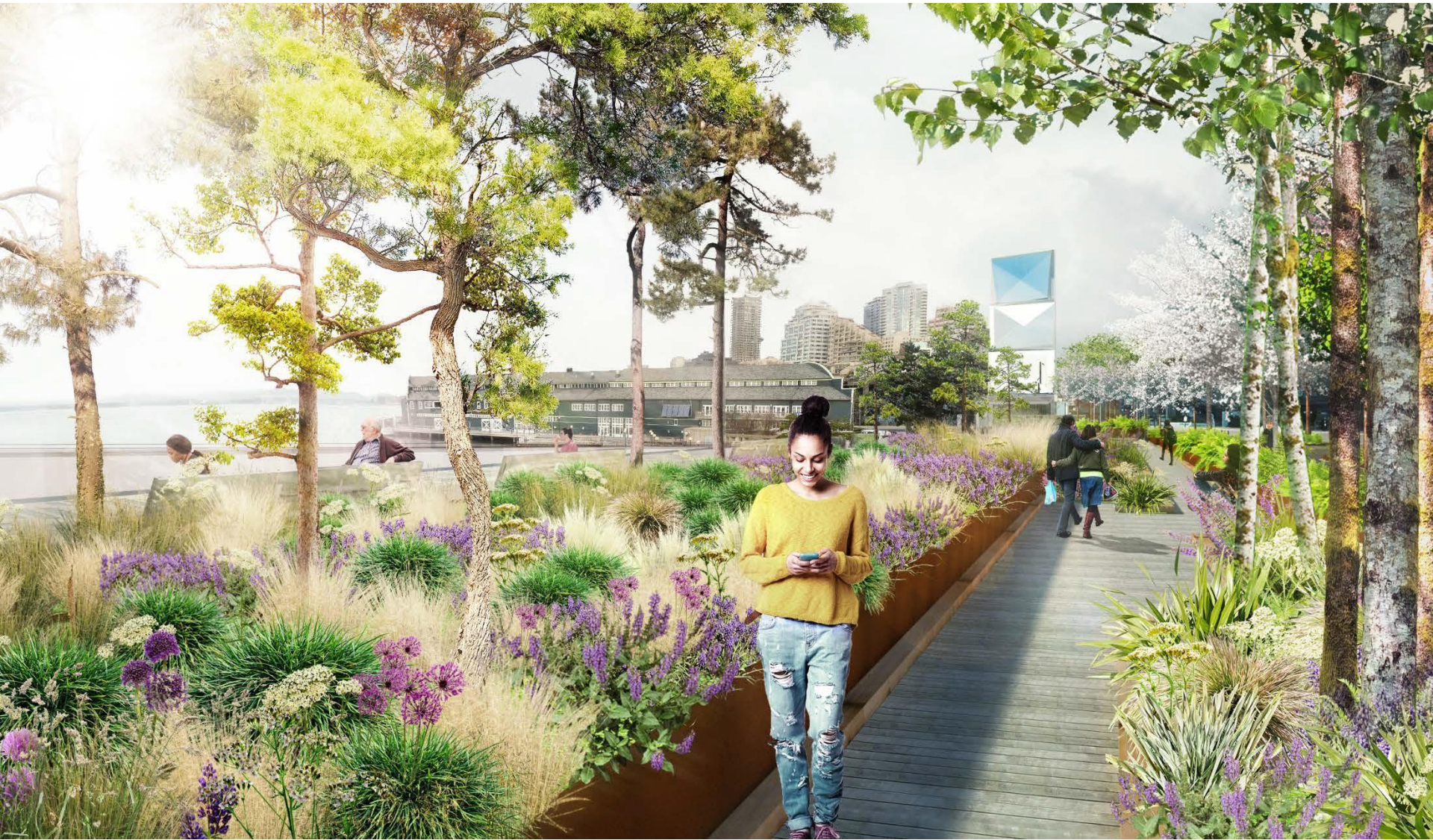


- 13.8 kV Network Relocation Project
 - \$4M estimate
 - Anticipated advertisement date: Q4 2017
 - Anticipated construction start: Q1 2018
- Building Demolition Project
 - \$100K estimate
 - Anticipated advertisement date: Q2 2018
 - Anticipated construction start: mid-2018

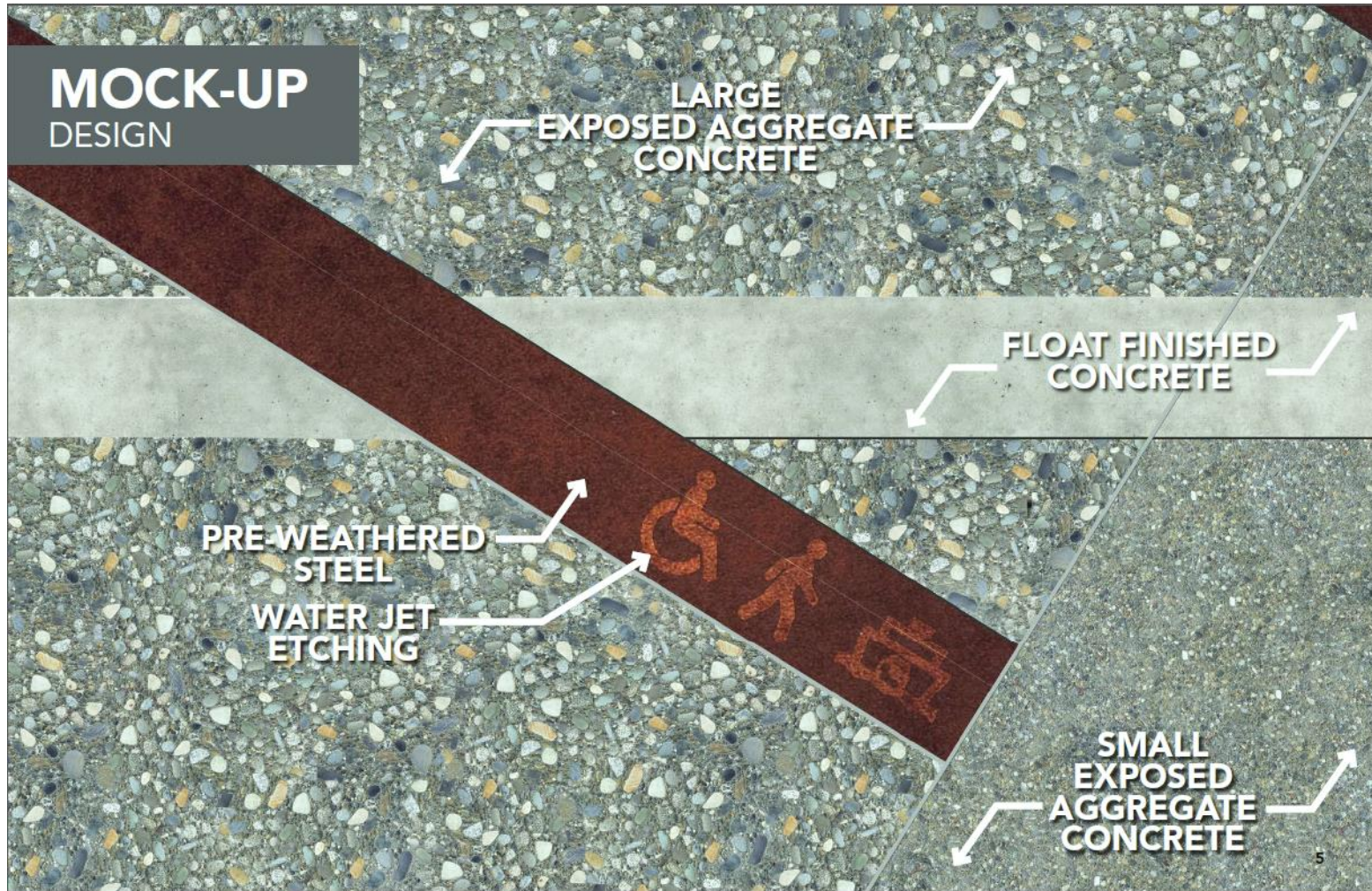
MAIN CORRIDOR



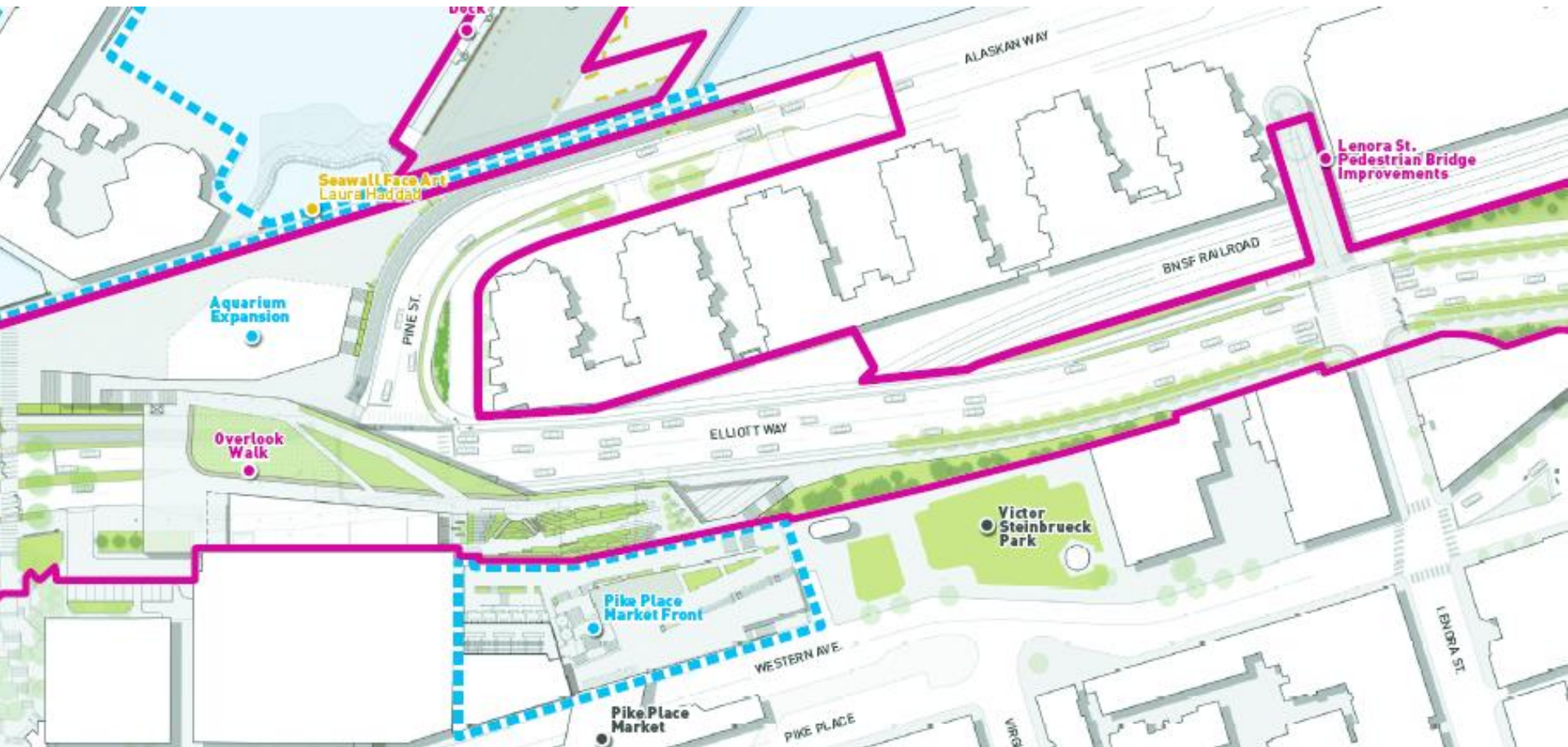
PROMENADE



DECORATIVE PAVEMENT



BRIDGE WORK



OVERLOOK WALK



EAST-WEST CONNECTIONS



WATERFRONT PARK



CONSTRUCTION SCHEDULE



	2017	2018	2019	2020	2021	2022	2023
WSDOT PROJECTS							
Bored Tunnel			◆ Tunnel open to traffic, early 2019				
Alaskan Way Viaduct Demolition							
Battery St Tunnel decommission							
South Access							
Colman Dock							
WATERFRONT SEATTLE PROJECTS							
Pier 62 Rebuild & Habitat Imp.							
Early Works							
Alaskan Way & Elliott Way					◆ New Alaskan & Elliott Way open to traffic, July		
Promenade							
East/West Connections							
Overlook Walk							
Waterfront Park							
Marion Street Bridge*							
OTHER CONSTRUCTION PROJECTS							
Center City Connector							
WA State Convention Center							
Lander St Overpass							
Aquarium Expansion							

NOTES:

- 1) Early Works may include: Columbia St drainage & areaway work, SCL vaults & duct banks, telecom work, building demolition, etc.
 - 2) Alaskan Way & Elliott Way includes: connections to Columbia St, Seneca St, Pine St, and Lenora St; Overlook Walk Foundations; Marion St Bridge Foundations; and Kiosk Foundations.
 - 3) East/West Connections include: Bell St, Union St Pedestrian Connection, Main and Washington Street Improvements, Pike and Pine Streetscape Improvements
 - 4) Construction dates subject to change pending: a) Tunnel & AWW Demolition completion dates and, b) Ongoing evaluation of sequencing and packaging assumptions for all projects.
- *Whether WSDOT or City will construct the Marion Street Bridge project is still under deliberation.