



ROSTER SOLICITATION - Document Controls

Project Manager	Jonathan Williams
Email	Jonathan.Williams@seattle.gov
Phone	(206) 733-9026
Website	N/A

High Level Scope	Conduct neighborhood access intercept surveys in Fall 2018. Summarize results and provide findings.
Contracting Opportunities (1)	Neighborhood Access Intercept Surveys opportunity will be advertised to vendors on the City of Seattle's Online Business Directory Roster under category Public Information and Public Relations.
Scope Details	Detailed scope will be released to all vendors registered under the Public Information and Public Relations Category in the City of Seattle Online Business Directory.
Contract Estimate	Contract for fall 2018 will approximately be \$85,000. SDOT may extend the contract with the selected vendor to cover 2019 for a similar amount.

Schedule Summary	SDOT is planning to release this opportunity to vendors on the roster in late June 2018.
This information is neither a guarantee of contracting opportunities, nor a promise of business and is subject to change. If you have any questions on the prospective projects, please contact the staff person identified for the project.	



SDOT UPCOMING CONSULTANT OPPORTUNITIES

Listing Updated Quarterly



Projects	Description	Design Consultant Opportunities	Construction Management Opportunities	Outreach Consultant Opportunities During Design	Outreach Consultant Opportunities During Construction	Planning	Other	Project Manager
Consultant Contracting Accessible Mount Baker	The Accessible Mt. Baker Plan will transform an auto-oriented area into a pedestrian and transit-oriented destination that is safe for everyone. The Plan will reconfigure the intersection of Rainier Ave South (Rainier Ave) and Martin Luther King, Jr. Way (MLK Way) and transform the Mt. Baker station area into a safe, comfortable and dignified place for people to walk, bike, and make transit connections. This contract will be for design services and design support during construction.	Q1 2018	2022-23	N/A	2022-23	N/A	N/A	Therese Casper therese.casper@seattle.gov 206-684-8764
Fremont RapidRide Planing, Design & Environmental	Zero to 30% planning, design and environmental for the Fremont RapidRide Corridor (a Seattle RapidRide Expansion Program corridor) with the provision for amending the contract to include all services associate with completing 60%, 90% and 100% design milestones. Work may include traffic analysis, traffic modeling, signals & ITS, and multimodal design. There is the potential for this corridor to be federally funded.	Q2/Q3 2018						Alison Townsend alison.townsend@seattle.gov 206-233-3780
Market/45th RapidRide Planning, Design & Environmental	Zero to 30% planning, design and environmental for the Market/45th RapidRide Corridor (a Seattle RapidRide Expansion Program corridor) with the provision for amending the contract to include all services associated with 60%, 90% and 100% design milestones. Work may include traffic analysis, traffic modeling, signals & ITS, and multimodal design.	Q2/Q3 2018						Alison Townsend alison.townsend@seattle.gov 206-233-3780
Madison BRT - CM Services	Provide on-site RE, inspectors, office engineer/document control team to manage the construction of this bus rapid transit project. A. Madison BRT (RE/Inspectors only) B. Madison BRT (Office Engineer/Doc Control only)		Q3 2019					Mark Sliger mark.sliger@seattle.gov 206-733-9936
Northgate Ped Bridge	This project constructs a new pedestrian and bike bridge over I-5 in Northgate to improve connections between the east and west sides of the community and to maximize the use of transit facilities, including the King County Transit Center and the future Sound Transit Link light rail station.		Q3 2019					Mark Sliger mark.sliger@seattle.gov 206-733-9936

Disclaimer: This information is neither a guarantee of contracting opportunities, nor a promise of business and is subject to change. If you have any questions on the prospective projects, please contact the staff person identified for the project.

Disclaimer: Updated 5/2017.This information is neither a guarantee of contracting opportunities, nor a promise of business and is subject to change. If you have any questions on the prospective projects, please contact the staff person identified for the project. Visit the SDOT WMBE website for the most up-to-date information at www.seattle.gov/transportation/oeei-wmbe or contact the SDOT Office of Equity and Economic Inclusion Interim WMBE Advisor, Viviana Y. Garza at viviana.garza@seattle.gov.

Projects	Description	Design Consultant Opportunities	Construction Management Opportunities	Outreach Consultant Opportunities During Design	Outreach Consultant Opportunities During Construction	Planning	Other	Project Manager
ROSTER SOLICITATION: On-Call Signal, Lighting, and ITS Design Services	The Engineering Services Group within SDOT Capital Projects delivers in-house plans for a range of improvements in Seattle's public right of way. Currently, traffic signals, pedestrian signals, RRFBs, pedestrian pushbutton upgrades, street lighting, pedestrian lighting, and RTIS improvements are largely designed in-house. As a result of peak workload from the Move Seattle Levy, it is anticipated that additional support will be needed to prepare: foundation design, traffic modeling, traffic analysis reports, plans, specifications, estimate, SCL service applications, QA-QC reviews, and perform research of as-built records.	Q2 2018						Erich Ellis erich.ellis@seattle.gov 206-684-5840
New CM On-Call Contracts	4 or 5 Non-federal contracts, 1 federal contract. Scope may be around \$4-5M each contract.		Q4 2018					Mark Sliger mark.sliger@seattle.gov 206-733-9936
Structural On-Call Services for Federally Funded Projects	Perform engineering services for SDOT in study, preliminary design, value engineering, PS&E, cost estimating, and construction. Other structural services include but not limited to bridge load rating, bridge seismic retrofit, rehabilitation or replacement, retaining wall design. Specialty services will include but not limited to: tunneling, areaway, underwater inspection, movable bridge.	Q4 2018?						Yuling Teo yuling.teo@seattle.gov 206-733-9244
Ballard Bridge Planning Study	The Ballard Bridge is over 100 years old and carries more than 57,000 vehicles per day. This planning study would explore alternatives and identify a recommended replacement alternative and associated costs. Regarding the recommended alternative, this study should identify the: essential functional needs, right-of-way needs, types of environmental permitting required, and ways to minimize impact to the navigable channel and 15th Ave W corridor traffic.					Q3/Q4 2018 - Q2 2019		Wes Ducey wes.ducey@seattle.gov 206-684-7033
Pedestrian Wayfinding Program	Develop a pedestrian wayfinding program. Conduct user research and stakeholder outreach, develop movement plan and system design, prepare maps and prototypes, recommend governance and maintenance strategies, user test design, develop design standards and implementation plan.	Q1 2018		Q1/Q2 2018				Aditi Kambuj aditi.kambuj@seattle.gov 206-615-0429

Disclaimer: This information is neither a guarantee of contracting opportunities, nor a promise of business and is subject to change. If you have any questions on the prospective projects, please contact the staff person identified for the project.

Disclaimer: Updated 5/2017. This information is neither a guarantee of contracting opportunities, nor a promise of business and is subject to change. If you have any questions on the prospective projects, please contact the staff person identified for the project. Visit the SDOT WMBE website for the most up-to-date information at www.seattle.gov/transportation/oeei-wmbe or contact the SDOT Office of Equity and Economic Inclusion Interim WMBE Advisor, Viviana Y. Garza at viviana.garza@seattle.gov.



Pioneer Square East-West Streets Project

Project Manager	Steve Pearce
Email	Steve.Pearce@seattle.gov
Phone	(206) 684-8371
Website	N/A

High Level Scope	The Office of the Waterfront and Civic Projects (OWCP) will shortly issue an RFQ soliciting for integrated design teams to design streetscape improvements in Pioneer Square.
Contracting Opportunities	<p>A. Project Objectives:</p> <ul style="list-style-type: none">• Connect the core of Pioneer Square to the new Waterfront;• Provide safe, convenient, graceful pedestrian connections and foster positive city life and activity in Pioneer Square east-west streets <p>B. Budget</p> <ul style="list-style-type: none">• The total budget for the project is \$20 million and consultant design services are expected to be between \$1.6-2.1 million <p>C. Geographic scope</p> <ul style="list-style-type: none">• The geography of the project is Yesler, Washington, Main and King Streets, between Alaskan Way and Second Avenue <p>D. Schedule:</p> <ul style="list-style-type: none">• Design would begin in September 2018 and construction is expected to begin in March 2021
Scope Details	<p>The following core disciplines required for this project:</p> <ul style="list-style-type: none">• Urban Design/Landscape Architecture• Civil Engineering• Project Management• Structural Engineering <p>The following supporting disciplines should be included on the team to evaluate existing conditions and address any design issues that emerge in the design process:</p> <ul style="list-style-type: none">• Survey• Traffic Engineering• Utility Engineering• Geotechnical Engineering



**Contract Estimate(s)**

Approximately \$1.6-2.1M

Schedule Summary

OWFCP is looking to release May 2018

The consultant contract opportunity will be announced on <http://consultants.seattle.gov/>. The Formal Solicitations are bid through the **City of Seattle E-Bid Exchange** system. This information is neither a guarantee of contracting opportunities, nor a promise of business and is subject to change. If you have any questions on the prospective projects, please contact the staff person identified for the project.

DRAFT





Document Controls

Project Manager	Shannon Walker
Email	Shannon.Walker@seattle.gov
Phone	(206)573-8308
Website	N/A

High Level Scope	<ul style="list-style-type: none">• To develop a Dynamic Electric Vehicle Service Equipment (EVSE) Siting Model that identifies priority areas for EV charging installation across the City based on different criteria “layers” that can be turned on/off.• To develop the Dynamic EVSE Siting Model in a way that can be geographically expanded with additional funding and developed to address further considerations for EVSE placement.• To produce an EVSE Roadmap Strategy and Strategic Siting Analysis that ranks Seattle’s Shared Mobility Hubs by priority for electrification.
Contracting Opportunities (3)	<p>The 11-week project period will be broken down into four task periods, each with specific sub-tasks, associated milestones, and deliverables.</p> <p><u>Task 0: Project Management</u> (Week 1) is the completion of all necessary project contracts and the establishment of a project management protocol. These sub-tasks are to be complete by the end of the Week 1, and the vendor should not proceed to further tasks until the Project Manager provides a go-ahead confirmation in writing.</p> <p>At this point the vendor will proceed to <u>Task 1: Create Dynamic EVSE Siting Model</u> (Weeks 2-8). The vendor will work with the Project Manager to finalize the model’s technical framework, inputs, outputs, criteria, and constraints and to develop a dynamic heatmap model for EVSE siting. The model will be built in a way that can be updated to include future EVSE locations and can turn “on” and “off” criteria to see the impacts of each on siting suggestions. Model development will be done in a highly iterative format that includes twice-a-week check-in meetings via phone, and in-person meetings at 50%, 80%, and 100% model completion. Appropriate City staff will conduct quality assurance testing on the model and any changes or technical issues will be resolved by the end of Week 8. The first and only Go/No-Go decision point is at the end of Week 8 and requires the completion of the Dynamic EVSE Siting Model by 7/6/2018.</p> <p>In <u>Task 2: Create EVSE Roadmap and Strategic Siting Analysis</u> (Week 9-10), vendor will use the Dynamic EV Siting Model to identify top-priority locations for EVSE installation near Shared Mobility Hubs. To do this, vendor will work closely with the Project Manager to rank Seattle’s Shared Mobility Hubs by priority group [(1-5)/(6-10)/(11-20)/(20+)] for electrification and include key attributes of each location that contribute to its ranking.</p> <p><u>Task 3: Concluding Hand-off</u> (Week 11) requires vendor to train appropriate staff in how to use the model and trouble-shooting resources available to them including a manual the vendor creates that documents assumptions and inputs to the model.</p>





	Vendor will also be responsible for ensuring the desired specifications are met and will provide the Project Manager all documentation, data sets, source code, and additional project assets. The consultant will also remain on-call to comply with a 360-day work guarantee.
Scope Details	Vendor may, but is not required to, hire subcontractors to complete portions of the work described. This entire project will be posted as one solicitation.
Contract Estimate(s)	\$75,000 Total

Schedule Summary	SDOT is looking to release this solicitation in April 2018.
<p>The consultant contract opportunity will be announced on http://consultants.seattle.gov/. The Formal Solicitations are bid through the City of Seattle E-Bid Exchange system.</p> <p>This information is neither a guarantee of contracting opportunities, nor a promise of business and is subject to change. If you have any questions on the prospective projects, please contact the staff person identified for the project.</p>	





Northgate Pedestrian Bridge---CM services

Project Manager	Mark Sliger
Email	mark.sliger@seattle.gov
Phone	(206) 733-9936
Website	N/A

High Level Scope	Provide preconstruction design support leading up to the advertisement and award of the construction contract. Provide on-site resident engineer(RE), multiple inspectors, and office engineer/document control services for this \$23M bridge project. This team will work out of a field office and the estimated duration of the construction contract is approximately 21 months. The bridge to be built will span I-5 and will require coordination with WSDOT, Sound Transit, and other agencies.
Contracting Opportunities	<ul style="list-style-type: none">• <u>Scope Summary</u><ul style="list-style-type: none">○ Preconstruction design support (90% constructability review, bid review, etc.)○ 5 FTE's during construction: This team will provide full oversight of all contractor work. The estimated duration for the construction is April 2019 thru December 2020. We're estimating 6 months of closeout activities starting in January 2021 and concluding in June 2021.• <u>Funding Notes:</u> FHWA/FTA
Scope Details	This contracting opportunity is anticipated to be released as stand-alone, full solicitation. The solicitation will be posted through the City of Seattle E-Bid Exchange portal.
Contract Estimate	Approximately \$ 3.3M
Schedule Summary	SDOT intends to advertise this RFQ in March/April 2018

The consultant contract opportunity will be announced on <http://consultants.seattle.gov/>. The Formal Solicitations are bid through the **City of Seattle E-Bid Exchange** system. This information is neither a guarantee of contracting opportunities, nor a promise of business and is subject to change. If you have any questions on the prospective projects, please contact the staff person identified for the project.





Madison BRT---CM services (2 separate RFQ's)

Project Manager	Mark Sliger
Email	Mark.Sliger@seattle.gov
Phone	(206) 733-9936
Website	N/A

High Level Scope	Provide on-site RE, inspectors, office engineer/document control team to manage the construction of this bus rapid transit project. EE = \$75M ±; duration = 24mo± ; FTA funded
Contracting Opportunities	<p>A. Madison BRT (RE/Inspectors only)</p> <ul style="list-style-type: none"> <u>Scope Summary</u> <ul style="list-style-type: none"> 7-9 FTE's ± : one fulltime RE, multiple inspectors; This team will manage the day to day oversight of all contractor work and will report directly to the City's Construction Engineering Supv.(CE); Tentative NTP for construction is Jan 2019 and completion in Dec 2020; (est duration = 24 mo ±) <u>Estimate:</u> <ul style="list-style-type: none"> \$6.5M <p>B. Madison BRT (Office Engineer/Doc Control only)</p> <ul style="list-style-type: none"> <u>Scope Summary</u> <ul style="list-style-type: none"> 2 FTE's ± : intend to hire an office engineer and document control team separately from the RE/Inspectors but they'll be a part of the overall CM team managing the construction of this project. The SDOT office engineer assigned to this project will provide guidance and oversight to the consultant OE/Doc Control team being hired. Tentative NTP for construction is Jan 2019 and completion in Dec 2020; (est duration = 24 mo ±) <u>Estimate:</u> <ul style="list-style-type: none"> \$1.5M
Scope Details	This solicitation will be posted through the City of Seattle E-Bid Exchange portal.
Contract Estimate(s)	RE/Inspector---contract size \$6.5M±; OE/Doc Control---contract size \$1.5M±

Schedule Summary	SDOT is planning to release these solicitations in Q2 2018
<p>The consultant contract opportunity will be announced on http://consultants.seattle.gov/. The Formal Solicitations are bid through the City of Seattle E-Bid Exchange system.</p> <p>This information is neither a guarantee of contracting opportunities, nor a promise of business and is subject to change. If you have any questions on the prospective projects, please contact the staff person identified for the project.</p>	



OFFICE OF THE WATERFRONT
Upcoming Contracting Opportunities

Listing updated August 2017



waterfrontseattle.org
 info@waterfrontseattle.org
 (206) 499-8040

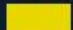
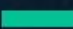



Project Name	Engineer's Estimate	Estimated Ad Date	Contact	Project Description	Flagging, Traffic Control	Demolition, Remediation	Excavation, Grading, Site Work	Shoring, Dewatering	Trucking	Concrete Roadway	Concrete Sidewalk, Curb Ramps	Specialty Finishes	Asphalt	Bridges, Retaining Walls	Structural Foundations	Building Construction	Over Water Work, Barging	Elevators	Drainage, Water Infrastructure	Electrical, Signals, Lighting	Channelization, Signage	Landscaping, Irrigation	Archeological Monitoring	Fencing, Site Security	Site Furnishings
CONSTRUCTION																									
13.8 kV Network Relocation [Joint project between Office of the Waterfront and Seattle City Light]	\$4M	Q4 2017	Barbara Lee (206) 615-1696	Advanced utility work related to the Waterfront Main Corridor project that will rebuild Alaskan Way and new Elliott Way.	X		X	X	X	X			X							X					
Building Demolition	\$100K	Q2 2018	Barbara Lee (206) 615-1696	Demolish existing building on Alaskan Way		X	X		X															X	
Alaskan Way Main Corridor and Utility Work	\$175 – 200M	Q4 2018	Barbara Lee (206) 615-1696	Rebuild Alaskan Way, new Elliott Way roadway, and connections to east-west streets (Columbia St, Seneca St, & Lenora St) to serve all modes of travel, and install new landscaped promenade along the waterfront. Includes utility work for Seattle City Light, Seattle Public Utilities, and private utilities.	X		X	X	X	X	X	X	X	X	X				X	X	X	X	X		X
Union St Pedestrian Connection	\$5 – 10M	Q2 2019	Angela Brady (206) 684-3115	A new pedestrian bridge connection on Union St between Western Avenue and Alaskan Way.	X		X	X	X			X		X	X			X	X	X	X	X		X	X
Pike and Pine Streetscape Improvements	\$10 – 15M	Q3 2019	Steve Pearce (206) 684-8371	Streetscape improvements along Pike St and Pine St	X		X	X	X	X	X	X	X						X	X	X	X			X
Waterfront Park [Joint project between Office of the Waterfront and Seattle Parks]	\$35 – 45M	Q4 2019	Kit Loo (206) 684-3669	Redesigned park on Union St Pier with new playground and water feature	X	X			X								X		X	X	X	X		X	X
Overlook Walk [Portions of contract may use General Contractor/Construction Manager method]	TBD	Q2 2020	Jessica Murphy (206) 684-0178	A new accessible bridge and building connection between Pike Place Market and the waterfront	X		X	X	X		X	X		X	X	X		X	X	X	X	X			X
Pioneer Square Street Improvements	\$8 – 10M	Q3 2020	Angela Brady (206) 684-3115	Streetscape improvements on several east-west streets in Pioneer Square	X		X	X	X	X	X	X	X						X	X	X	X			X
DESIGN																									
Bell Street	\$1.5 – 2M	Q1 2018	Angela Brady (206) 684-3115	Extension of the Bell Street Park between 1st Ave and Elliott Ave	X		X	X	X	X	X	X	X						X	X	X	X			X
Pioneer Square Street Improvements	\$2 – 4M	Q1 2018	Angela Brady (206) 684-3115	Streetscape improvements on several east-west streets in Pioneer Square	X		X	X	X	X	X	X	X						X	X	X	X			X

Disclaimer: This information is neither a guarantee of contracting opportunities, nor a promise of business and is subject to change. If you have any questions on the prospective projects, please contact the staff person identified for the project.

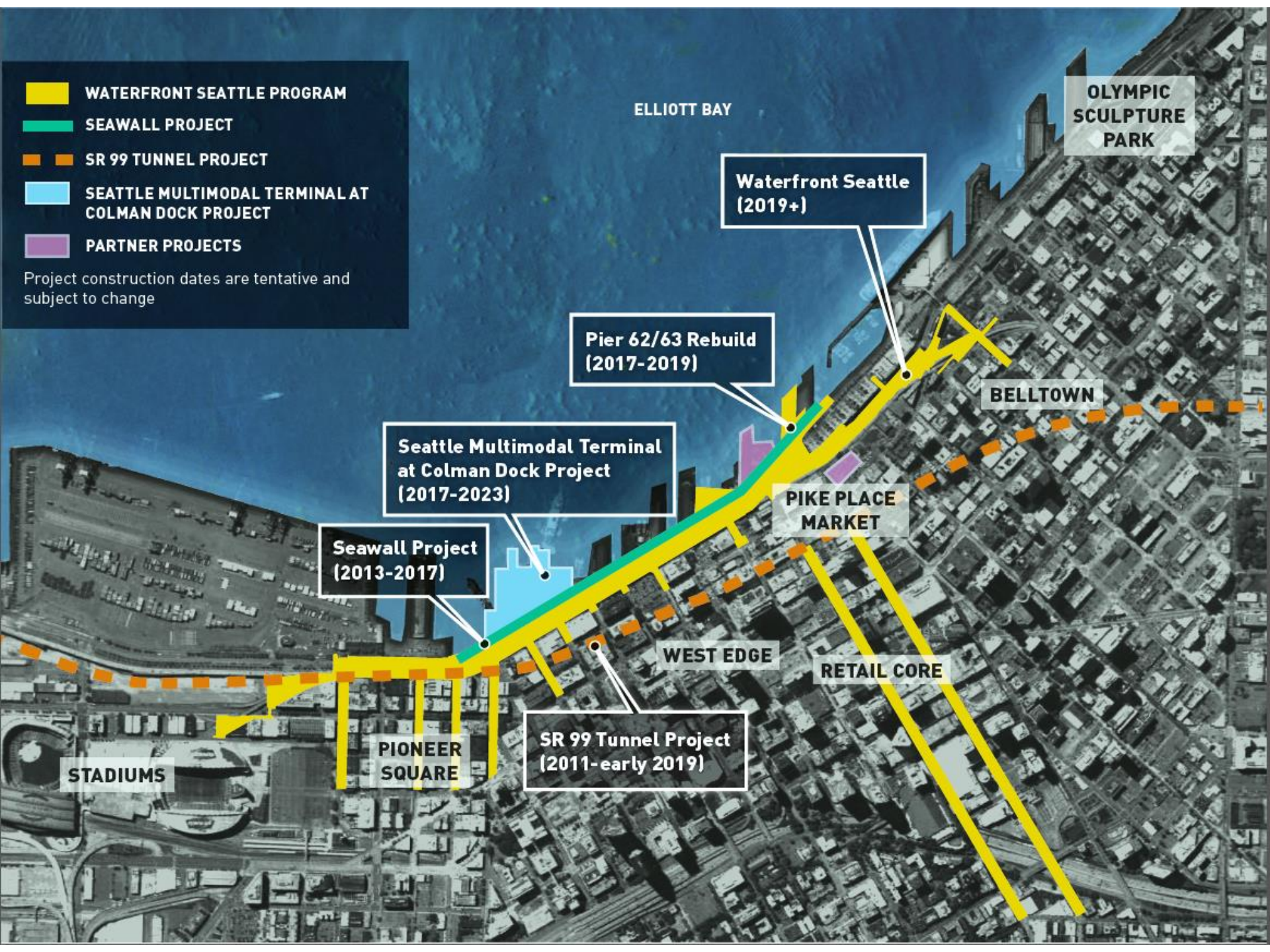


CONSTRUCTION SHOWCASE

September 29, 2017

-  WATERFRONT SEATTLE PROGRAM
-  SEAWALL PROJECT
-  SR 99 TUNNEL PROJECT
-  SEATTLE MULTIMODAL TERMINAL AT COLMAN DOCK PROJECT
-  PARTNER PROJECTS

Project construction dates are tentative and subject to change



ELLIOTT BAY

OLYMPIC
SCULPTURE
PARK

Waterfront Seattle
(2019+)

Pier 62/63 Rebuild
(2017-2019)

Seattle Multimodal Terminal
at Colman Dock Project
(2017-2023)

Seawall Project
(2013-2017)

PIKE PLACE
MARKET

BELLTOWN

WEST EDGE

RETAIL CORE

SR 99 Tunnel Project
(2011-early 2019)

PIONEER
SQUARE

STADIUMS

WATERFRONT SEATTLE PROGRAM



RAILROAD WAY	PIONEER SQUARE	TRANSIT HUB	HISTORIC PIERS	CENTRAL PUBLIC SPACE	BELLTOWN
<ul style="list-style-type: none"> 1 WATERFRONT 2 PIONEER SQUARE 3 STADIUMS 	<ul style="list-style-type: none"> 1 ALASKAN WAY 2 WATERFRONT PROMENADE 3 WASHINGTON ST. BOAT LANDING 4 S. KING ST. 5 S. MAIN ST. 6 S. WASHINGTON ST. 7 HABITAT INTERTIDAL ZONE 	<ul style="list-style-type: none"> 1 ALASKAN WAY 2 WATERFRONT PROMENADE 3 COLUMBIA ST. 4 MARION ST. PEDESTRIAN BRIDGE 5 COLMAN DOCK TERMINAL REPLACEMENT 6 YESLER WAY 	<ul style="list-style-type: none"> 1 ALASKAN WAY 2 WATERFRONT PROMENADE 3 SENECA ST. 	<ul style="list-style-type: none"> 1 ELLIOTT WAY 2 WATERFRONT PROMENADE 3 UNION ST. 4 WATERFRONT PARK REBUILD 5 OCEAN PAVILION 6 PIERS 62/63 PHASE 1 REBUILD 7 OVERLOOK WALK 8 PIKE/PINE STS. 	<ul style="list-style-type: none"> 1 ELLIOTT WAY 2 LENORA ST. PED BRIDGE RETROFIT 3 BELL ST. 4 PORTAL PARK

NEAR-TERM CONSTRUCTION CONTRACTING OPPORTUNITIES

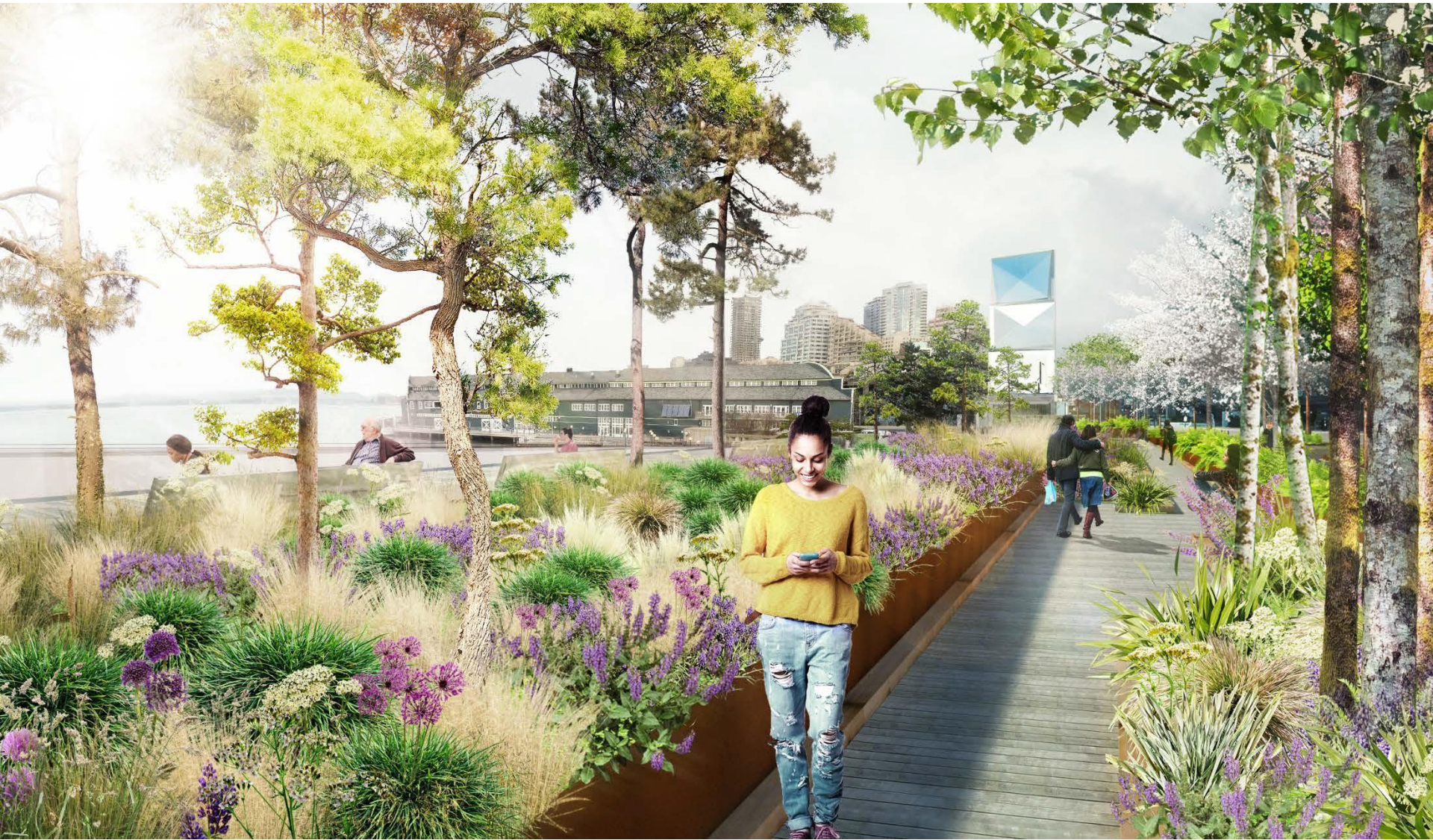


- 13.8 kV Network Relocation Project
 - \$4M estimate
 - Anticipated advertisement date: Q4 2017
 - Anticipated construction start: Q1 2018
- Building Demolition Project
 - \$100K estimate
 - Anticipated advertisement date: Q2 2018
 - Anticipated construction start: mid-2018

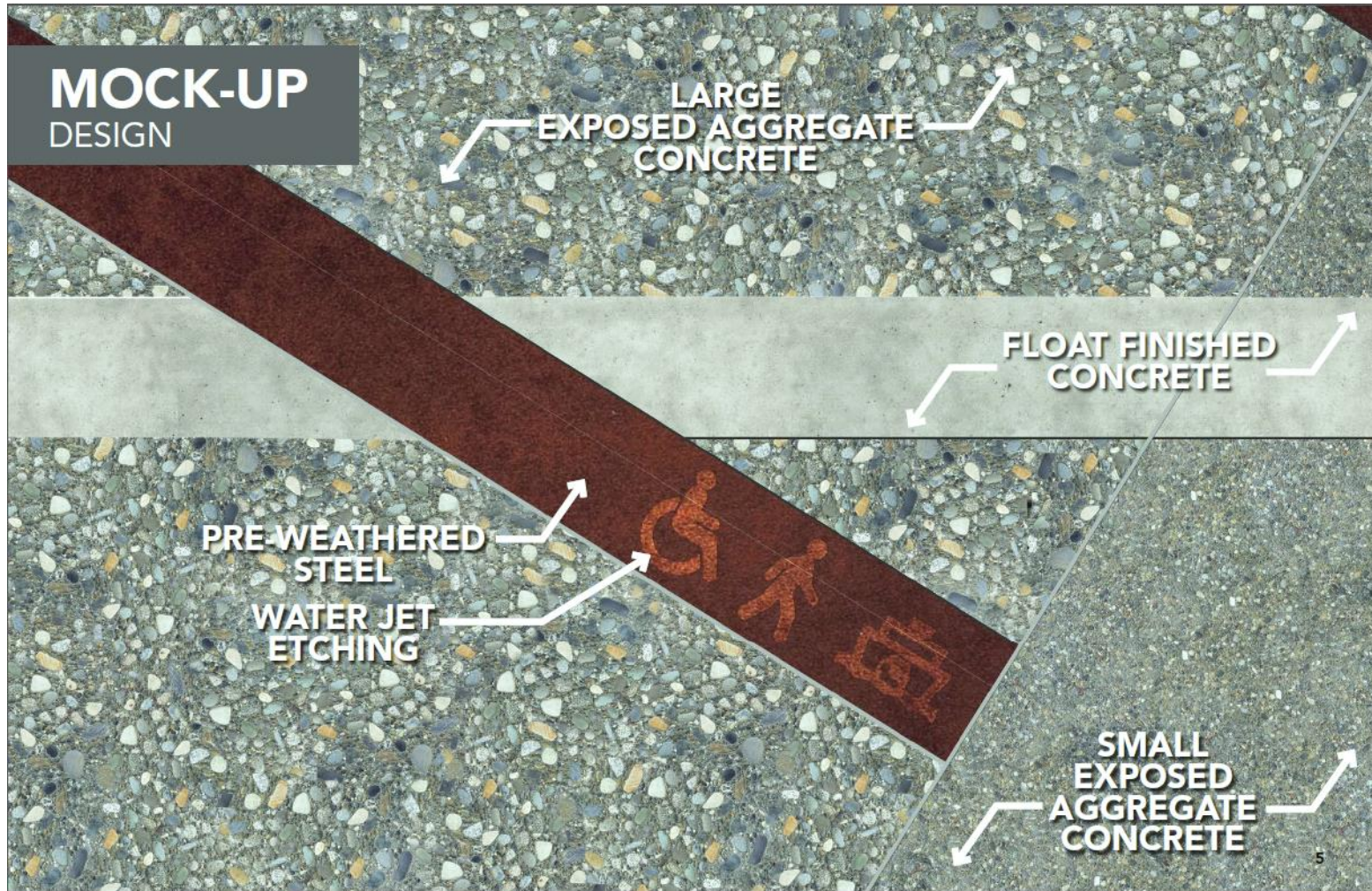
MAIN CORRIDOR



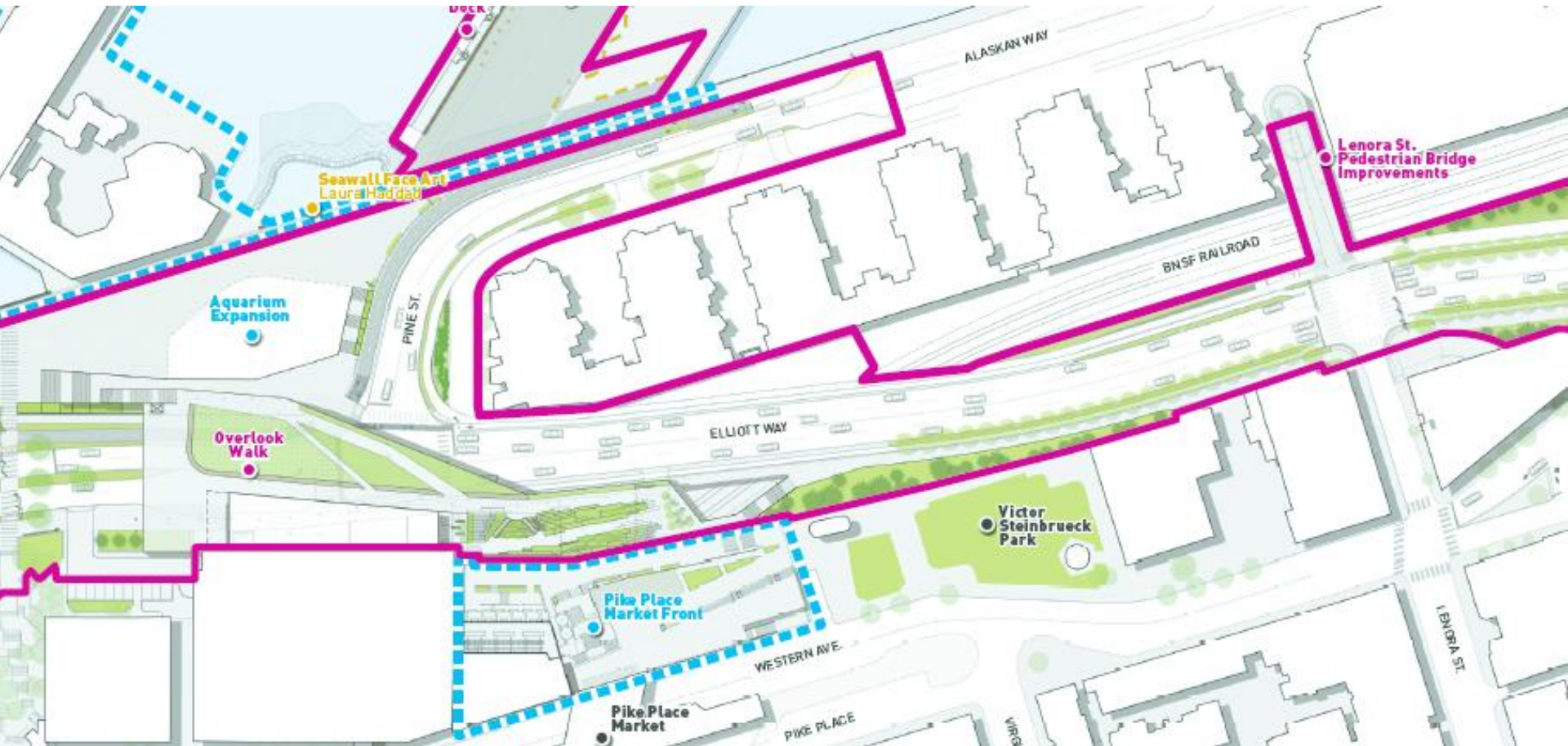
PROMENADE



DECORATIVE PAVEMENT



BRIDGE WORK



OVERLOOK WALK



EAST-WEST CONNECTIONS



WATERFRONT PARK



CONSTRUCTION SCHEDULE



	2017	2018	2019	2020	2021	2022	2023
WSDOT PROJECTS							
Bored Tunnel			◆ Tunnel open to traffic, early 2019				
Alaskan Way Viaduct Demolition							
Battery St Tunnel decommission							
South Access							
Colman Dock							
WATERFRONT SEATTLE PROJECTS							
Pier 62 Rebuild & Habitat Imp.							
Early Works							
Alaskan Way & Elliott Way					◆ New Alaskan & Elliott Way open to traffic, July		
Promenade							
East/West Connections							
Overlook Walk							
Waterfront Park							
Marion Street Bridge*							
OTHER CONSTRUCTION PROJECTS							
Center City Connector							
WA State Convention Center							
Lander St Overpass							
Aquarium Expansion							

NOTES:

- 1) Early Works may include: Columbia St drainage & areaway work, SCL vaults & duct banks, telecom work, building demolition, etc.
 - 2) Alaskan Way & Elliott Way includes: connections to Columbia St, Seneca St, Pine St, and Lenora St; Overlook Walk Foundations; Marion St Bridge Foundations; and Kiosk Foundations.
 - 3) East/West Connections include: Bell St, Union St Pedestrian Connection, Main and Washington Street Improvements, Pike and Pine Streetscape Improvements
 - 4) Construction dates subject to change pending: a) Tunnel & AWW Demolition completion dates and, b) Ongoing evaluation of sequencing and packaging assumptions for all projects.
- *Whether WSDOT or City will construct the Marion Street Bridge project is still under deliberation.