

TRANSPORTATION LEVY TO MOVE SEATTLE



Spring 2015

SDOT's mission, vision, and core values

Mission: deliver a high-quality transportation system for Seattle

Vision: connected people, places, and products

Committed to **5 core values** to create a city that is:

- Safe
- Interconnected
- Affordable
- Vibrant
- Innovative

Moving Seattle forward

In early March 2015, Mayor Murray announced his 10-year vision for transportation, called Move Seattle. It's a vision that integrates our long-term plans for walking, biking, transit, and freight into a holistic approach that contributes to a safe, interconnected, affordable, and vibrant city. A city that works for all travelers and keeps goods moving.

To help make this vision a reality, we'll need to replace our current transportation levy (Bridging the Gap) that expires at the end of 2015.

This presentation outlines a draft proposal for a Transportation Levy to Move Seattle. We hope you'll engage in the conversation and share your feedback.

Current levy – Bridging the Gap



9-year,
\$365
million levy
expires in
2015

Bridging the Gap commitments

Pedestrian/Bike Safety

- Repair or restore 144 blocks of sidewalks
- Build 117 blocks of new sidewalks
- Restripe 5,000 crosswalks
- Create "safe routes to schools" near 30 elementary schools
- Fund neighborhood-identified street improvements
- Add 4 miles of new multi-use paths
- Support the development and implementation of a Pedestrian Master Plan
- Provide funding to implement the Bicycle Master Plan

Major Projects

Fund 3 major capital improvement projects: Spokane Street Viaduct, Mercer Street Corridor, and King Street Station

Maintenance

- Rehabilitate 40-50 stairways
- Resurface, restore, or replace 200 lane-miles of arterial streets
- Rehabilitate or replace 3-5 bridges and seismically retrofit 5 additional bridges
- Prune 25,000 street trees to prevent safety and security hazards
- Plant 8,000 new street trees
- Replace over 50,000 small, faded street and regulatory signs

Transit

- Secure up to 45,000 hours of new Metro Transit service
- Enhance transit and safety improvements on 3 key transit corridors

Transportation Levy to Move Seattle

Proposal aims to:

- Address today's basic needs
- Expand the transportation system to meet tomorrow's needs
- Create a safer, more connected and more integrated system that works for all travelers

Replacement levy proposal

9-year funding breakdown

Safe City: \$350 M

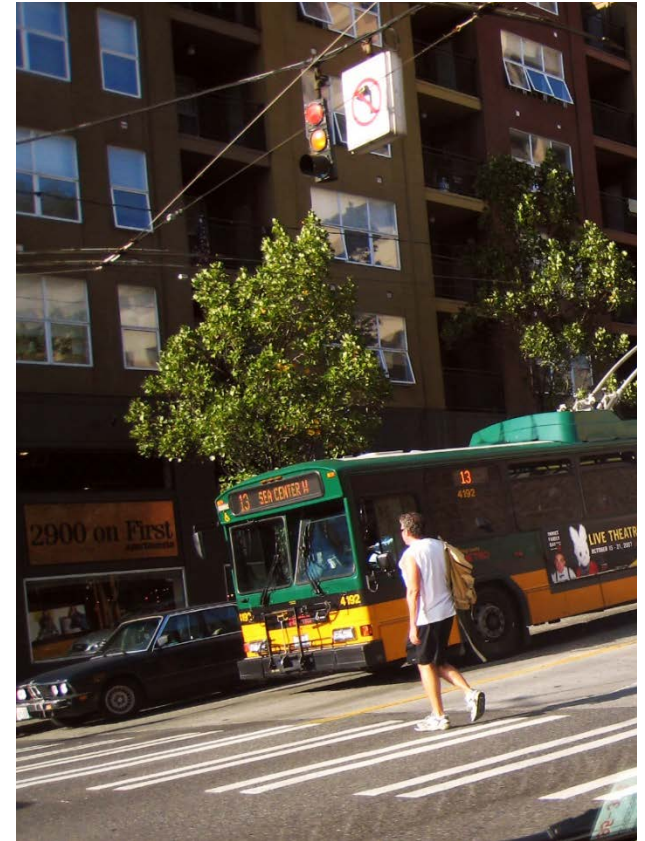
Affordable City: \$275 M

Interconnected City: \$170 M

Vibrant City: \$105 M

9-year total \$900 M

Annual cost to
median household \$275



A safe, affordable, interconnected, vibrant Seattle

A Safe City

Implement Vision Zero: a program to eliminate serious and fatal crashes on Seattle streets

- Complete 12-15 corridor safety projects
- Complete 9-12 Safe Routes to School projects each year
- Increase crosswalk striping frequency to a 4-year or better cycle



School crossing guards near Graham Hill Elementary in the Rainier Valley

A Safe City

Protect our most vulnerable travelers – people walking and biking

- Build 50 miles of protected bike lanes and 60 miles of greenways
- Repair up to 225 blocks of damaged sidewalks
- Improve curb ramps and crossing at up to 750 intersections
- Complete the Burke-Gilman Trail Missing Link



Protected bike lane in the U District

A Safe City

Keep our bridges safe

- Eliminate the backlog of bridge spot repairs
- Seismically reinforce 16 bridges
- Replace Seattle's last timber-supported vehicle bridge (Fairview Avenue)
- Plan and design for high priority bridge replacements beginning after 2024 (Ballard)



Ballard Bridge

An Affordable City

Provide tools to help people get around without the expense of owning a car

Work with:

- businesses to ensure access to transit passes, bike share and car share memberships for commuters
- residents, landlords and developers to ensure access to transit, car share, bike share, and other travel options



People boarding the Route 7 bus
along Rainier Ave

An Affordable City

Maintain and modernize 250 lane miles of our hardest-working arterial streets

- Repave/reconstruct up to 180 lane-miles of arterial streets, focused on transit corridors
- Repave 65 lane-miles through spot improvements



15th Ave NE paving project (completed)

An Interconnected City

Modernize outdated streets to give people convenient and affordable travel options

- Complete 7-10 multimodal corridor projects
- Make bus service more reliable through a transit improvement program
- Optimize traffic signal timing on five corridors each year



Madison St bus rapid transit corridor

An Interconnected City

Develop better connections to light rail

- Provide funding for a Link light rail station at Graham Street
- Fund a pedestrian and bicycle bridge over I-5 connecting to light rail in Northgate
- Build pedestrian and bicycle connections to light rail stations



Northgate pedestrian/bicycle bridge

An Interconnected City

Make it easier to walk and bike in Seattle

- Build 100 new blocks of sidewalks
- Make streets without sidewalks safer and more comfortable
- Install 1,500 new bicycle parking spots citywide



On-street bicycle parking in the U District

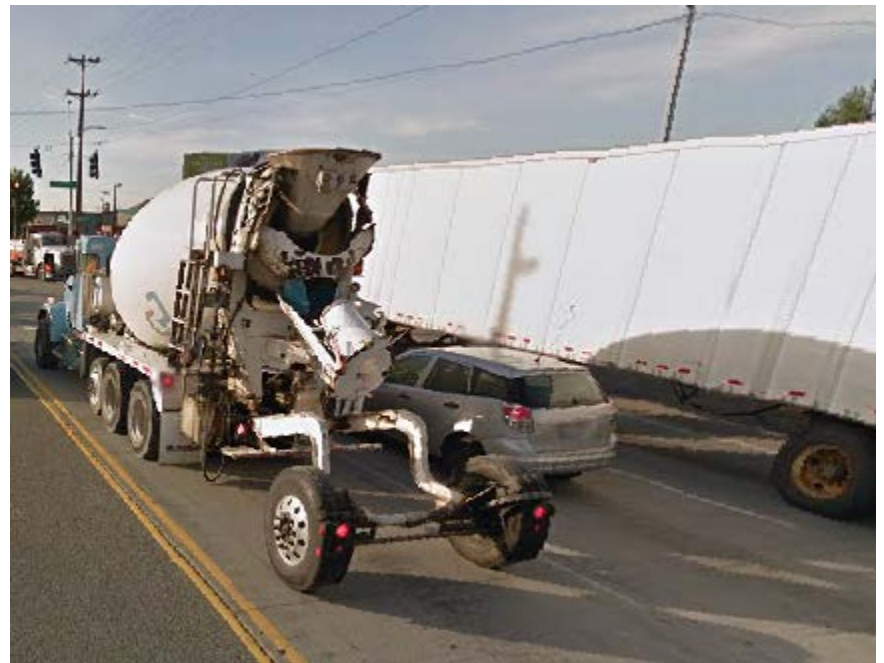


Rendering of potential design solution for streets without sidewalks

A Vibrant City

Improve mobility for freight and delivery vehicles

- Provide local money to design and build the Lander Street Overpass
- Build the East Marginal Way corridor
- Fund a targeted spot improvement program to help freight movement



Cars and trucks on E Marginal Way

A Vibrant City

Invest in neighborhood projects

Complete 20-35 projects submitted by neighborhoods to improve safety, mobility and access and quality of life in those neighborhoods



Rendering of the Georgetown Festival Street, a project funded by the Neighborhood Street Fund

A Vibrant City

Take care of our urban forest and improve drainage in flood-prone communities

- Plant two new trees for every tree removed
- Add new City tree crew to proactively spot prune
- Partner with Seattle Public Utilities to address drainage issues in flood-prone South Park and Broadview



City crews planting street trees



Flooding in South Park

2015 Schedule

March	April	May	June	July	August
Public engagement period					
	Incorporate public feedback				
		★ Mayor submits proposal to City Council			
				★ Possible City Council action	
					★ Proposal to King County

Engaging the community

- Survey
- Website
- Three open houses
- Stakeholder roundtables
- Social media
- Community briefings
- Widespread media coverage and ethnic media
- Toolkit



Get Involved

- Visit the website to learn more:
www.seattle.gov/LevytoMoveSeattle
- Complete the survey: www.moveseattlesurvey.com
- Attend a community conversation:
 - **Saturday, March 28:** New Holly Gathering Hall
(7054 32nd Ave S, Seattle 98118): 10 AM - 12 PM
 - **Monday, March 30:** Roosevelt High School
(1410 NE 66th St, Seattle 98115): 6 - 8 PM
 - **Tuesday, March 31:** West Seattle High School
(3000 California Ave SW, Seattle 98116): 6 - 8 PM

Questions?

allison.schwartz@seattle.gov | (206) 386-4654

<http://www.seattle.gov/LevytoMoveSeattle.htm>

