

# 2025 CIV Department and Commission Overview

Executive Director Andrea Scheele

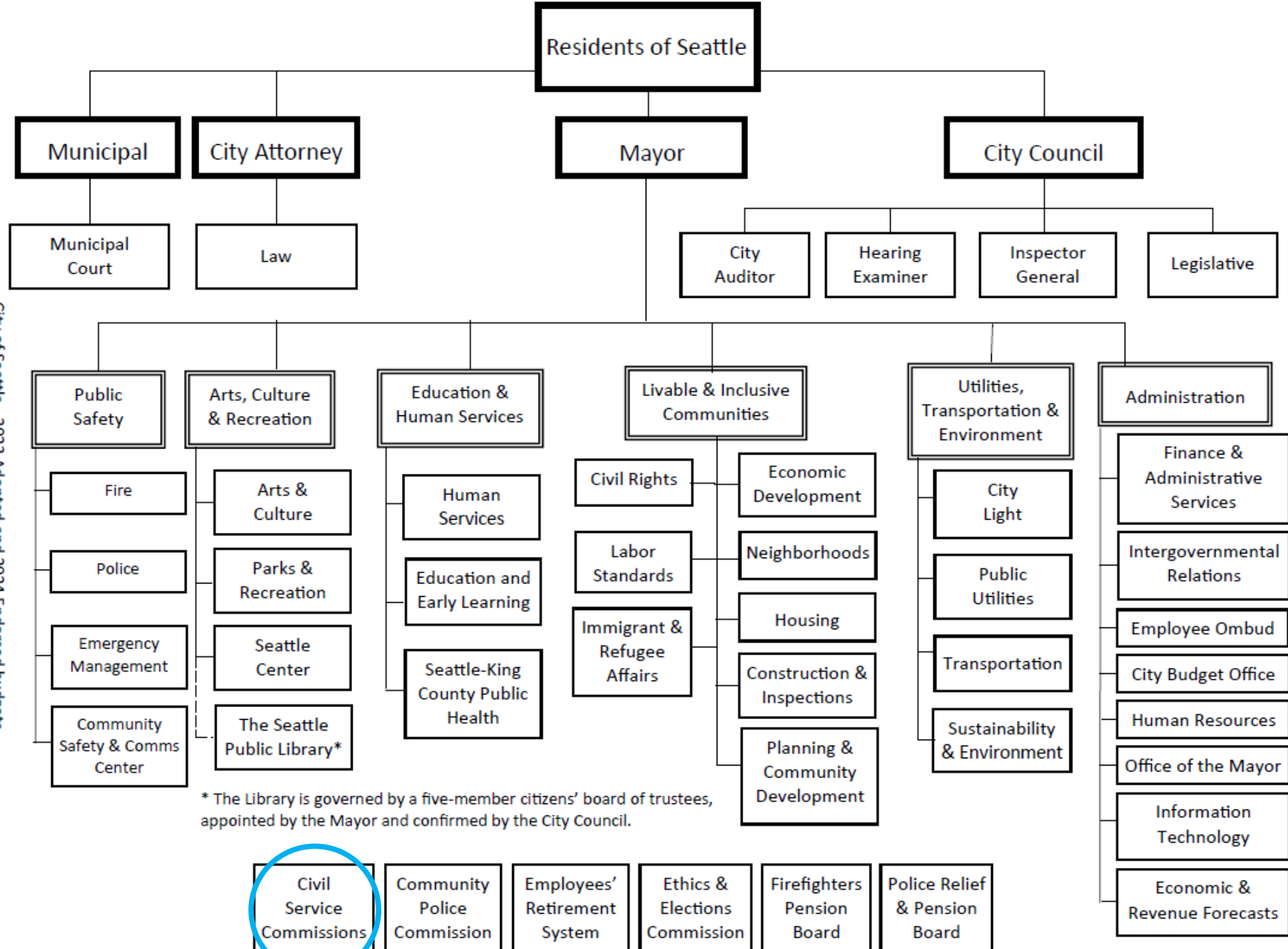


**City of Seattle**

# Roadmap:

- Seattle's civil service systems
- Roles and Functions
- Central functions





# Civil Service Commissions Department

## Roles and Functions

- CSC and PSCSC Commissioners
- Executive Director
- Commission Counsel
- Each commission has a member appointed by the Mayor, one by the City Council, and one elected by the employees in each civil service system.
- Executive Director serves as ED for both CSC and PSCSC
  - Appointed and supervised by both commissions
  - Is appointing authority for staff for the Civil Service Commissions Department



# CSC Commissioner Duties



Disciplinary and  
other Appeal  
Hearings



Rulemaking,  
Political Patronage



Recommendations  
to City Council  
and Mayor



Appoint and  
Supervise  
Executive Director  
(with PSCSC)



City of Seattle

# PSCSC Commissioner Duties



Disciplinary Appeal  
Hearings



Merit-based Hiring and  
Promotional  
Examinations



Rulemaking, Political  
Patronage



Appoint and Supervise  
Executive Director (with  
CSC)



City of Seattle



# Commission Chair Duties



Preside over  
Commission Meetings



Rule on Parliamentary  
Procedure



Act as Hiring  
Authority and  
Primary Supervisor  
for the ED (With CSC  
Chair)

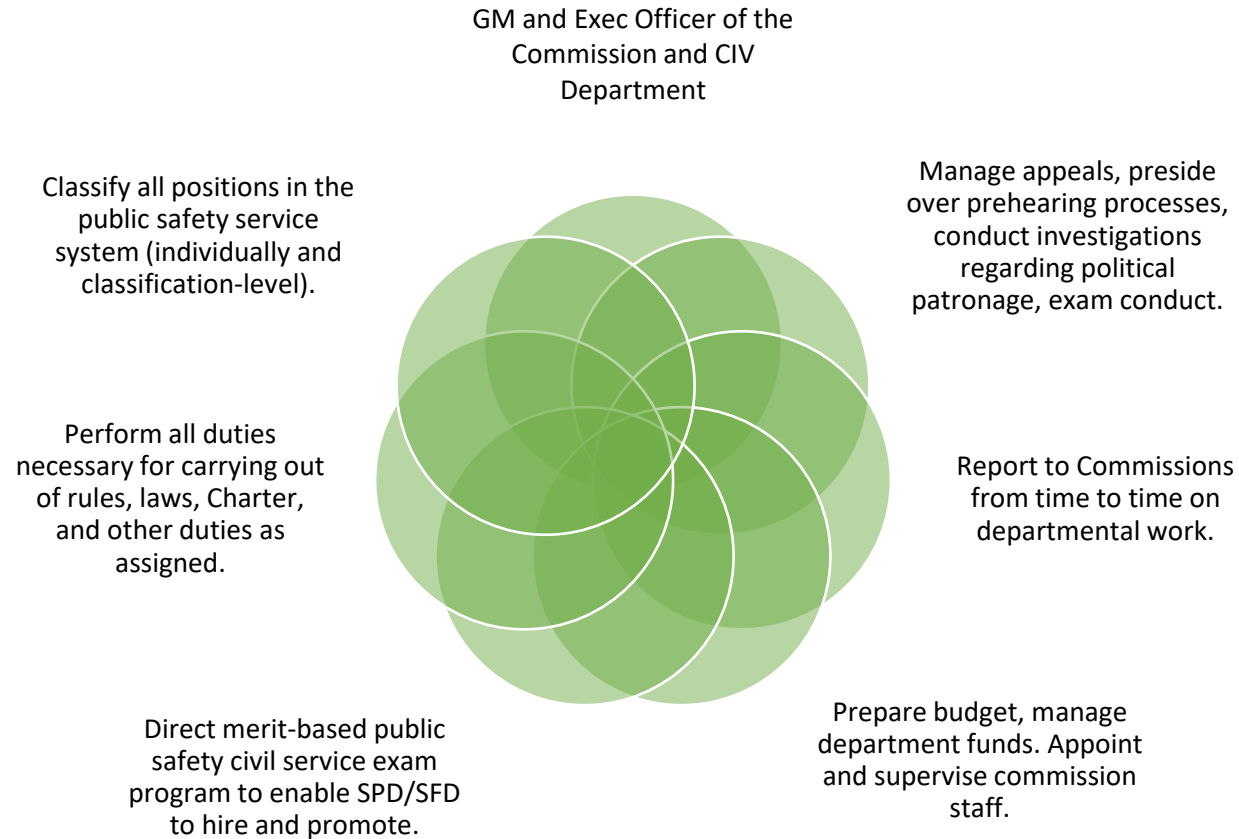


May Sign  
Correspondence on  
Behalf of the  
Commission



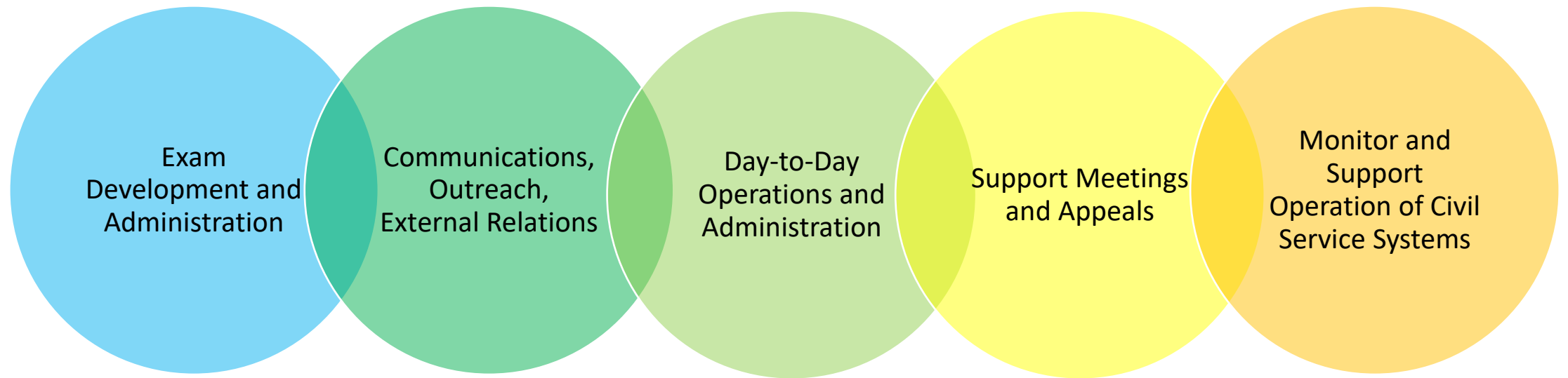
City of Seattle

# Executive Director Duties





# Civil Service Commissions Staff Duties



# CSC- Partners and Stakeholders

**City  
Departments  
and HR Units**

**New hires  
and current  
employees**

**City labor  
negotiators  
and unions**

**City  
Attorney's  
Office**

**Seattle  
Human  
Resources**

**Office of  
Hearing  
Examiner**



# PSCSC- Partners and Stakeholders

**Seattle Fire and  
Seattle Police  
Departments**

**Candidates and  
Potential  
Candidates**

**Labor Relations  
and Firefighter  
and Police Officer  
unions**

**Mayor**

**City Council**

**Seattle Human  
Resources- Class  
Comp Unit**

**City Attorney's  
Office**



**City of Seattle**