

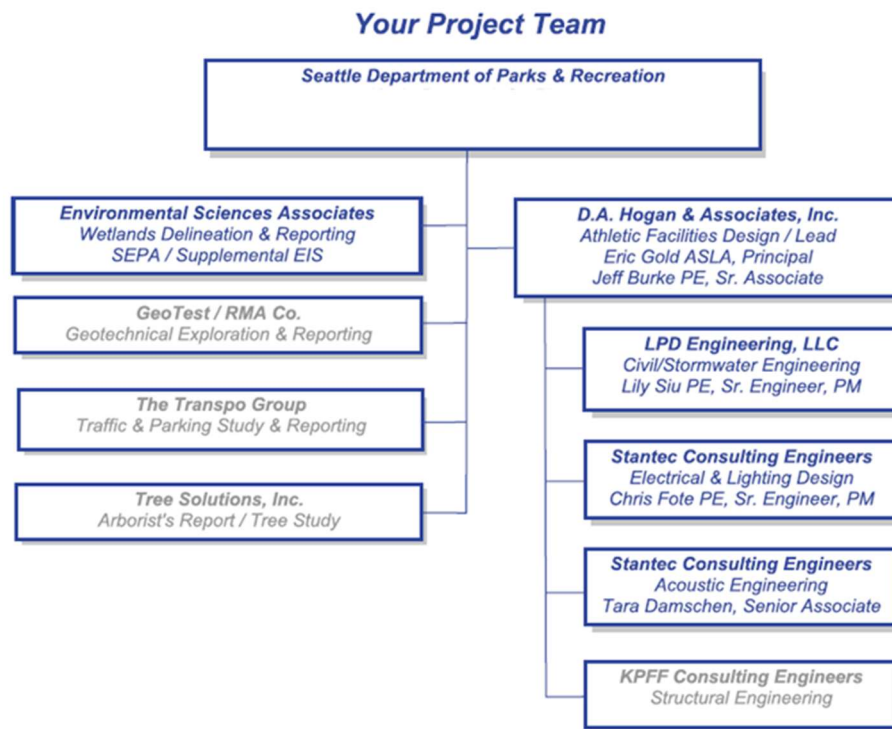
## Magnuson Pickleball Q&A Summary – Public Meeting #2, November 21, 2024

**UPDATES ADDED: APRIL 11, 2025**

Visit <https://www.seattle.gov/parks/about-us/projects/outdoor-pickleball-court-planning> for more information.

### 1. Q: Who are the consultants on this project

A: The chart below depicts the Project Team.



### 2. Q: Will parking which exists at the site be replaced?

A: The existing parking lot will be reduced in size. Future additional parking in lieu of the works-yard west of the existing parking lot may be considered per the 2006 Magnuson Park Master Plan. Environmental and traffic impacts will be analyzed by the consultants for alternatives in the Supplemental Environmental Impact Statement (SEIS); including a 'No Action' (retaining the site as a parking lot), develop the project site per the adopted 2006 Master Plan (baseball field and parking lots), 25 pickleball courts on the project site at Magnuson Park with a first phase of 8-10 lit courts. An off-site alternative will also be explored.

**3. Q: Will there be enough on-site parking for hosting pickleball tournaments?**

A: Parking strategies may be identified with the pending Transportation Study as part of the Environmental Impact Study. Future additional parking in lieu of the works-yard west of the existing parking lot may be considered.

**4. Q: Will there be enough parking for spectators?**

A: Parking strategies may be identified with the pending Transportation Study as part of the Environmental Impact Study. Future additional parking in lieu of the works-yard west of the existing parking lot may be considered.

**5. Q: Will other sports be allowed to utilize the parking lot?**

A: As at all other SPR parks, parking is available for all park users on a first come, first served basis.

**6. Q: What is the overall cost of the project?**

A: Current total funding appropriation is \$2.6M from the Seattle Parks District Fund. Seattle Parks and Recreation supports additional community funding to supplement design and/or construction for various phases of work through the Seattle Parks Foundation; such as a \$1M community donation provided through the Seattle Metro Pickleball Association.

**7. Q: What consideration is given to wildlife in the site area?**

A: SPR has hired Environmental Science Associates to study the impacts of pickleball court play on wildlife as part of the SEIS.

**8. Q: Will there be parking for bikes?**

A: Yes. Bike racks will be provided at the facility.

**9. Q: Who is funding the project?**

A: Current total funding appropriation is \$2.6M from the Seattle Parks District Fund. Seattle Parks and Recreation supports additional community funding to supplement design and/or construction for various phases of work through the Seattle Parks Foundation; such as a \$1M community donation provided through the Seattle Metro Pickleball Association.

**10. Q: Will outdoor special events, such as fun runs, or large special events be able to use the parking lot?**

A: As with all parking within SPR parks and Magnuson Park, parking provided on a first come, first served basis. SPR Special Events unit coordinates with event organizers. Special events held in the parking lot may need to relocate to alternative sites in the future.

**11. Q: Will nature be impacted in and around the parking lot?**

A: The existing parking lot is assigned active recreation i.e. baseball diamond in the 2006 Master Plan. The Supplemental Environmental Impact Statement (SEIS) will assess impacts of the proposed pickleball facility. The project team includes biologists and regulatory specialists.

**12. Q: How will vandalism be addressed?**

A: Typical with the rest of Magnuson Park and other city-wide assets, the pickleball facility will be maintained in accordance with SPR park operation and maintenance procedures.

**13. Q: Will the facility be multipurpose?**

A: The facility is being designed for pickleball play as the primary use. A gathering space with some seating and picnic tables will be included, however the entire park is intended to support multipurpose recreational activities. The pickleball facility add another recreational use to the overall park.

**14. Q: Will the pickleball facility be open to all park users?**

A: The facility will be open to the entire community.

**15. Q: What is the cost of the future development?**

A: Potential future phases beyond 8-10 lit courts are not currently funded by the city or outside groups. The timeline of future phases is not determined but general full buildout cost estimates are being developed. Operating and maintenance costs of the new facility are analyzed and projected per SPR funding models.

**16. Q: Will all courts be visible for spectators?**

A: Areas at the perimeters of the courts will include small bleachers. Chain link fencing around the courts will enable viewing for spectators. However, the need for noise mitigation curtains along the north and east edges are being explored with the critical view corridors in mind.

**17. Q: Is the entire park site being assessed for adding this specific use?**

A: Yes. SPR has functionally assessed the entire park for locating this specific use. The SEIS will assess the impacts of the proposed pickleball facility.

**18. Q: What was the assessment process for selecting this particular site?**

A: The project originated in 2019 with a pilot program and subsequent citywide study in 2021/2022 (Pickleball Master Plan) to identify where tennis courts could be converted to shared tennis/pickleball courts. SPR selected this location as a candidate site in 2022. In 2023, SPR started a new study to identify where dedicated pickleball courts could be constructed in the city. A short list was developed which consisted of five courts in south Seattle and five in north Seattle. Magnuson became the designated site in the north, Georgetown is the designated site in the south.

**19. Q: What other ways can citizens voices be heard regarding this project?**

A: There will be opportunity for additional public input during the SEIS process and City Council review of the Master Plan. Comments and questions can be sent to SPR as well.

**20. Q: Were other user groups considered for this space, why was notification not provided?**

A: Since 2006 (Council approved Master Plan) this site has been planned for a baseball field with new parking lots to the west and south. The primary intent of this site has been for active recreation use with reconstructed habitat areas to the north. SPR has notified adjacent neighborhoods through a mailed post card and releases to the news media are completed prior to public engagement events, two of which were held in 2024.

**21. Q: How do we know are concerns are being heard?**

A: Note taking takes place at all public meetings. Updates are posted to the project webpage.

**22. Q: When will preparation of the SEIS begin?**

A: The work on the SEIS began early 2025. When the draft SEIS is completed, SPR will send public notices through the media for a 30-day comment period. A draft SEIS is anticipated to be ready by July 2025.

**23. Q: What about noise impacts to other users?**

A: An acoustic study is being conducted to examine noise impacts from the facility and any respective mitigation strategies that may be required.

**24. Q: Where is the funding coming from for the project?**

A: SPR has designated capital improvement funding for pickleball facilities as part of the overall CIP funding. SPR is also supportive of community contributions to supplement funding.

**25. Q: Will the decision makers hear us?**

A: Yes. SPR strives to hear all voices in favor and/or in opposition. Examples where support or opposition may be voiced are at public meetings, communicating with the Project Manager, and/or through local councilmembers through their respective channels.

**26. Q: How has the community been informed about pickleball at Magnuson Park?**

A: Since Council approved the Magnuson Park Master Plan in 2006, this site has been planned for active recreation (baseball field) with new parking lots to the west and south. The primary intent of this site has been for active recreation use with reconstructed habitat areas to the north. SPR informs the public of engagement events through a mailed post card and news media prior to public engagement events, two of which were held in 2024. Visit <https://www.seattle.gov/parks/about-us/projects/outdoor-pickleball-court-planning> for more information.

**27. Q: Have the parking areas adjacent to the arena in the north end of Magnuson Park been considered for pickleball?**

A: Yes, however the parking lots east and west of the arena are used by the arena and boat launch. The subsurface conditions of the area west of the arena are not suitable for play courts, and therefore adding the new use and making it accessible wasn't feasible with given budget.

**28. Q: Has SPR considered the old tennis courts near the off-leash area for pickleball?**

A: Yes however, the old tennis courts area is identified as a naturalized area in the Magnuson Park Master Plan. SPR does not intend to convert this or other naturalized areas into active sports areas under the proposed Master Plan Amendment.

**29. Q: How does SPR fund the maintenance and operations of a proposed future facility?**

A: SPR adds funding for increased operation and maintenance during the budget process for park district cycles. SPR assumes funding for increased operation and maintenance based on certain capital projects and investments in new facilities which is evaluated annually during the budget process.