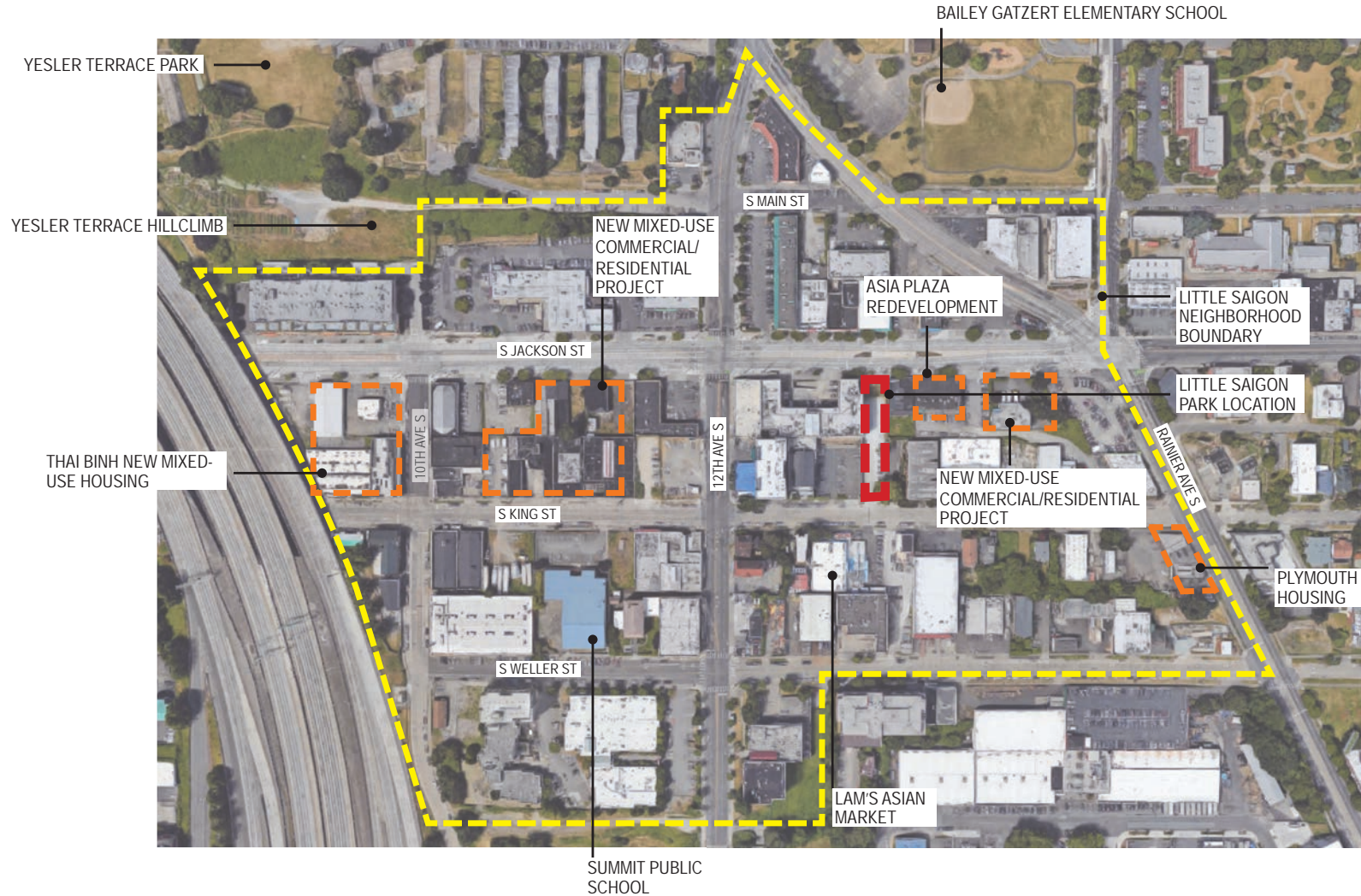


LITTLE SAIGON LANDBANKED SITE PARK PROJECT

International Special Review District Presentation



UPDATED: JANUARY 2022
IN RESPONSE TO 6/15/2021
CORRECTIONS NOTICE



NEIGHBORHOOD CONTEXT

LITTLE SAIGON LANDBANKED SITE PARK PROJECT





SITE CONTEXT AND CONDITIONS

LITTLE SAIGON LANDBANKED SITE PARK PROJECT





LOOKING SOUTH FROM S. JACKSON



LOOKING NORTH AT S. JACKSON- GRADE CHANGE

EXISTING SITE PHOTOGRAPHS

LITTLE SAIGON LANDBANKED SITE PARK PROJECT



LOOKING NORTH ACROSS SOUTH KING STREET

Project Start-up May 2018 - June 2018	Schematic Design & Public Engagement July 2018 - Sept 2019	Design Development Oct 2019 - Nov 2020 (Covid Delay)	Construction Documents & Permitting Dec 2020 - June 2022 (Covid Delay)	Bidding & Construction June 2022 - June 2023
	<ul style="list-style-type: none"> • 3 Public Meetings <ul style="list-style-type: none"> August 26, 2018 (Festi-Roll) November 1, 2018 (Pho Bac) July 14, 2019 (Pho Bac) • CPTED walk Jan 25, 2019 • Public Survey Feb 2019 • Meetings with Little Saigon Park Advisory Committee • CPTED walk August 13, 2019 	<ul style="list-style-type: none"> • Artist Selection and Notification (Nov-Dec 2019) • Artist begins work (Jan 2020) 	<ul style="list-style-type: none"> • Art design completion (Aug 2021) 	<ul style="list-style-type: none"> • Art construction/ fabrication (December 2022) • Art completion/ installation (February 2023)

SPR SCHEDULE (Art Schedule in blue)

LITTLE SAIGON LANDBANKED SITE PARK PROJECT



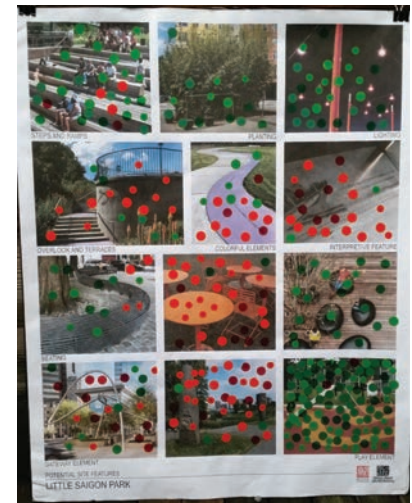
PUBLIC ENGAGEMENT:



1. August 26, 2018- Public Meeting #1 at Little Saigon Festi-Roll (200+ attendees)
2. September 11, 2018- Little Saigon Park Advisory Committee Meeting (LSPAC)
3. September 21, 2018- Parking Day outreach
4. October 2, 2018- LSPAC Meeting
5. November 1, 2018- Public Meeting #2 (40+ attendees)
6. November 13, 2018- LSPAC Meeting
7. February 19, 2019- LSPAC Meeting to discuss public survey feedback
8. March 20, 2019 - LSPAC Design Charette
9. April 17, 2019- LSPAC Meeting
10. May 21, 2019- LSPAC Meeting
11. July 14, 2019 - Public Meeting #3
12. February 3, 2020 - LSPAC Meeting, Play area review
13. **July 8, 2021- Survey sent for input on gateway feature color**
 - Email sent to 24 members of LSPAC
 - 7 Respondants resulted in split vote on color selection

SUMMARY COMMENTS:

- Not a strong preference about which concept was most preferred; slight preference for Concepts #1 and #2 over #3
- Concern about safety and security, homeless use. Create open sight lines and have lighting.
- Desire for more open flexible-use space
- Stronger understanding/portrayal of Vietnamese references in the designs
- Continued support for the play area



LITTLE SAIGON LANDBANKED SITE PARK PROJECT



RACIAL EQUITY TOOLKIT SUMMARY

- Set Outcomes.
 - Increase opportunities for historically underrepresented communities to participate in the public engagement process
- Involve Stakeholders. Analyze data.
 - The Little Saigon Park Advisory Committee was created to involve stakeholders from for profit and non-profit sectors as well as residents from the Little Saigon community
- Determine Benefit and/or Burden.
 - Benefit: Increased access to open space
 - Burden/Unintended consequence: Reduced parking for Lam's Seafood
- Advance Opportunity or Minimize Harm.
 - A robust public engagement process will foster a community designed park space, increase ownership and support stewardship
 - Always include translation
 - Lam's Seafood is culturally significant to the community. Working alongside Lam's to assist with messaging for customers can help minimize harm to the business
- Evaluate. Raise Racial Awareness. Be Accountable.
 - Track attendance of public meetings and provide flyers that have images which reflect the community served
 - Continue to check-in with stakeholders on status of the park design and engagement opportunities
- Report Back.
 - Share analysis with internal team as well as external stakeholders

RACIAL EQUITY TOOLKIT

LITTLE SAIGON LANDBANKED SITE PARK PROJECT



PURPOSE:

- This is one of 14 landbanked sites which were purchased by Seattle Parks to provide additional access to open space in a high density urban neighborhood.
- The park will provide accessible space for neighborhood events and community interaction.
- The design of the park is to reflect the cultural character of the neighborhood.
- The park will be designed to CPTED principles.
- The park will be designed to reduce maintenance.
- There is a 15% max limit on impervious surfaces with the exception of circulation paths and surfaces under tree canopy.



PROGRAM:

- The park is designed to provide different sizes of spaces for accessible community gatherings and events.
- A public art installation will reflect the culture of the neighborhood.
- The park will be designed with open sight lines and night lighting.
- There will be multiple locations designed for performances. An events electrical panel will be installed.
- The parking space in front of the park on S. King Street will be reserved for temporary food trucks and Parks maintenance vehicles.
- The community requested a play area.

PURPOSE AND PROGRAMMING

LITTLE SAIGON LANDBANKED SITE PARK PROJECT

What We Heard

How We Responded

The final design is based upon comments received from the community, input from the ISRD, and discussions on our safety walk with Seattle Police.

Public Comments:

- Parks design should be flexible and allow for a wide variety of activities, including:
 - Children's Play area
 - Ability to adapt to the changing community
 - Performance spaces of differing sizes
 - Reflect the culture of the neighborhood

ISRD Comments:

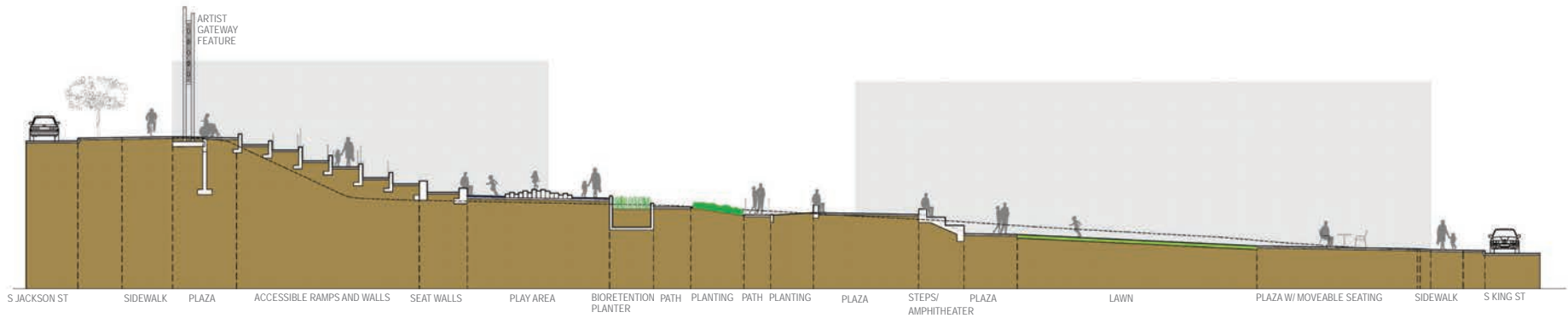
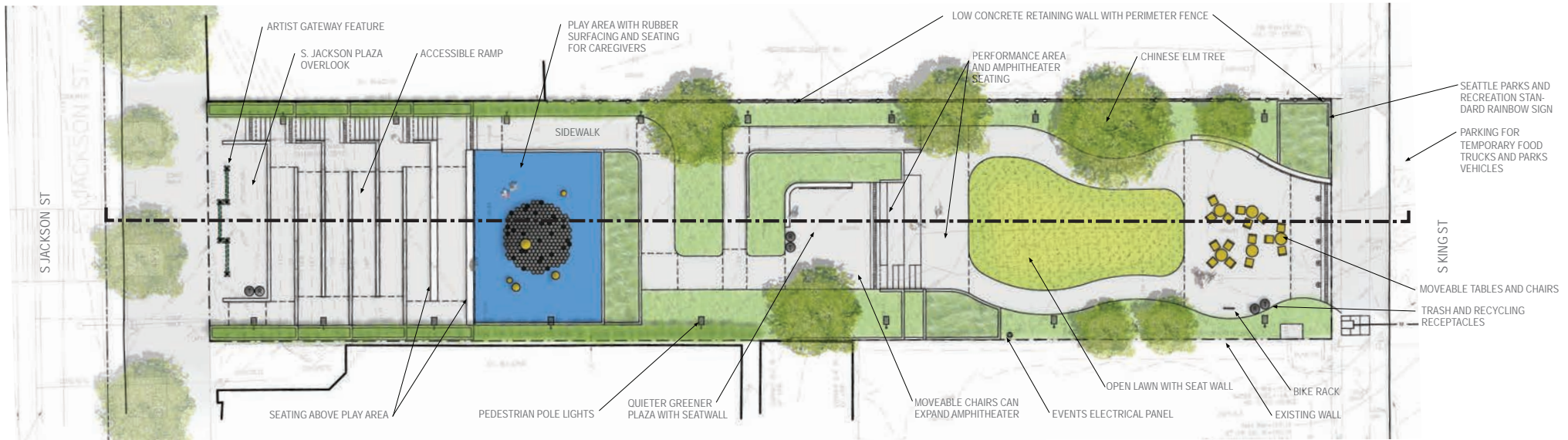
- Consider an integrated amphitheater space working with the slopes.
- Request more specific input from the community on:
 - a. The types of programming that are desired within the park.
 - b. The types of performances that are desired for the stage area. How can the stage area be tailored to the specific types of performances desired?
 - c. The types of play that are desired within the play area.
 - d. Where does the main programming want to be located, on the Jackson or King side?
 - e. On iconography that speaks to the community.
- Incorporate a CPTED narrative into the next presentation. Consider coordinating with the local police officer.

Safety Walk Comments from Police: August 13, 2019

- Park should have visible site lines through the park
- Provide good lighting

Our Response:

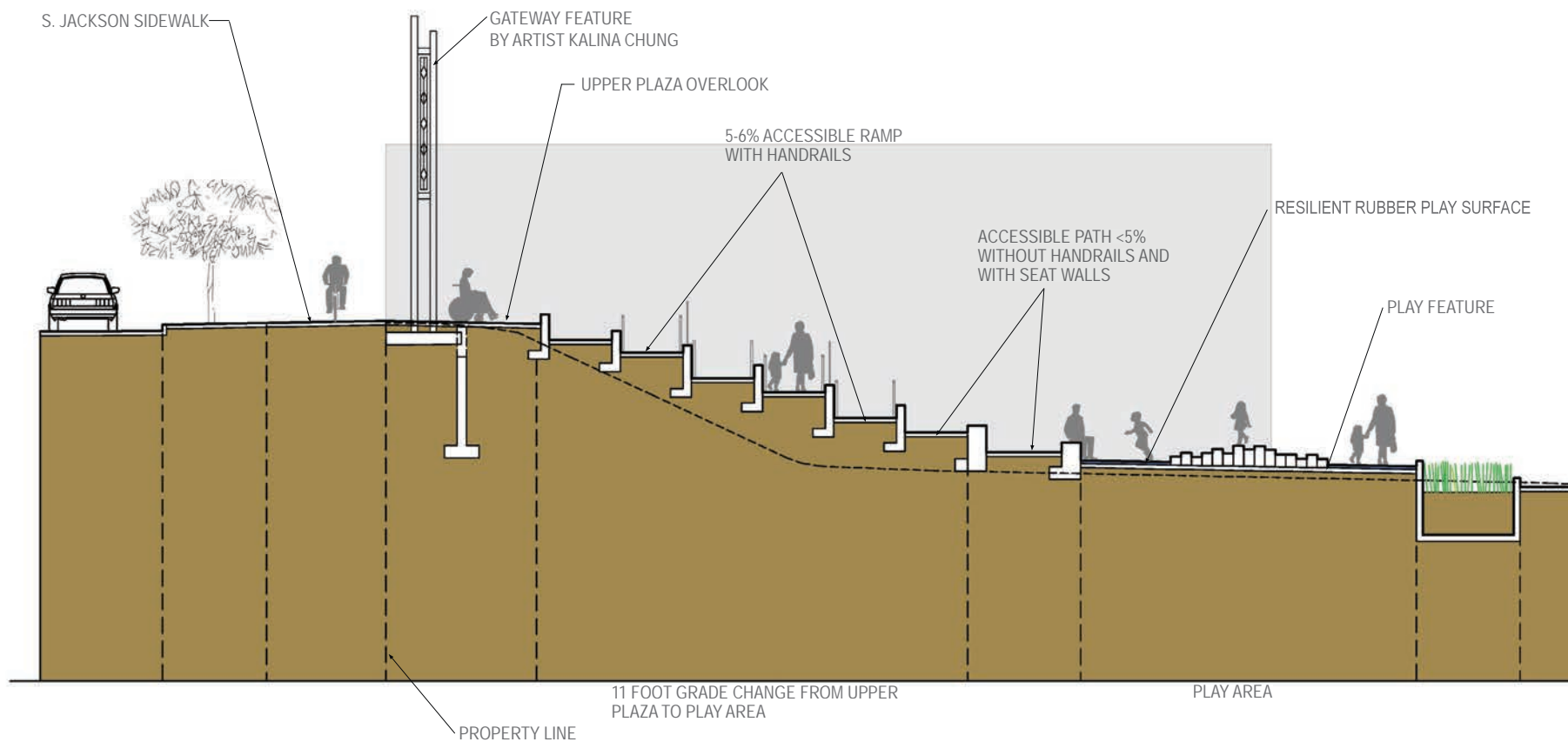
- The final design has multiple and flexible activity and performance spaces
- There is a childrens play area
- The plant materials and colors of fixed elements reflect the culture of the neighborhood
- An artist will be selected to reinforce the cultural identify
- The current design has clear site lines from end to end and will have good lighting to make the park feel safer
- The park enables patrol cars to have clear views through the park from both Jackson and King Street.
- Tree canopies will be kept high and shrub plantings low to keep site lines open



PROPOSED PARK PLAN AND SECTION

LITTLE SAIGON LANDBANKED SITE PARK PROJECT





ENLARGED SECTION OF RAMPS

LITTLE SAIGON LANDBANKED SITE PARK PROJECT





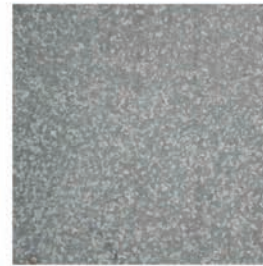
BLACK POWDER COATED/ PAINTED/
VINYL-COATED METAL: GUARDRAIL,
CHAINLINK FENCE, LIGHT FIXTURES,
TRASH RECEPTACLES

① SCALE: NTS



BUTTERCUP YELLOW POWDER COATED/
PAINTED: TABLES AND CHAIRS,
PATTERNS ON CONCRETE BENCHES

② SCALE: NTS



GALVANIZED STEEL: HANDRAILS
AND REMOVABLE BOLLARDS

③ SCALE: NTS



BROOM-FINISH, STANDARD GRAY,
CONCRETE SURFACING: WALKWAYS
AND PLAZAS

④ SCALE: NTS



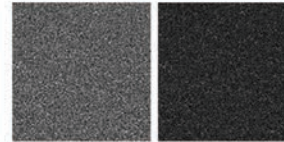
SMOOTH FORM FINISH CONCRETE: WALLS

⑤ SCALE: NTS



CLOSE-UP OF SKY BLUE RUBBER SURFACING

⑥ SCALE: NTS



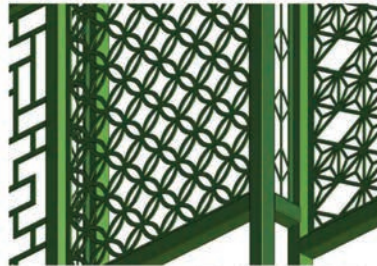
BLACK AND GRAY RUBBER STEPPERS

⑦ SCALE: NTS



BRIGHT YELLOW FULL
RUBBER BALLS

⑧ SCALE: NTS



CLOSE-UP OF 2-TONE GREEN COLOR GATEWAY FEATURE

⑨ SCALE: NTS

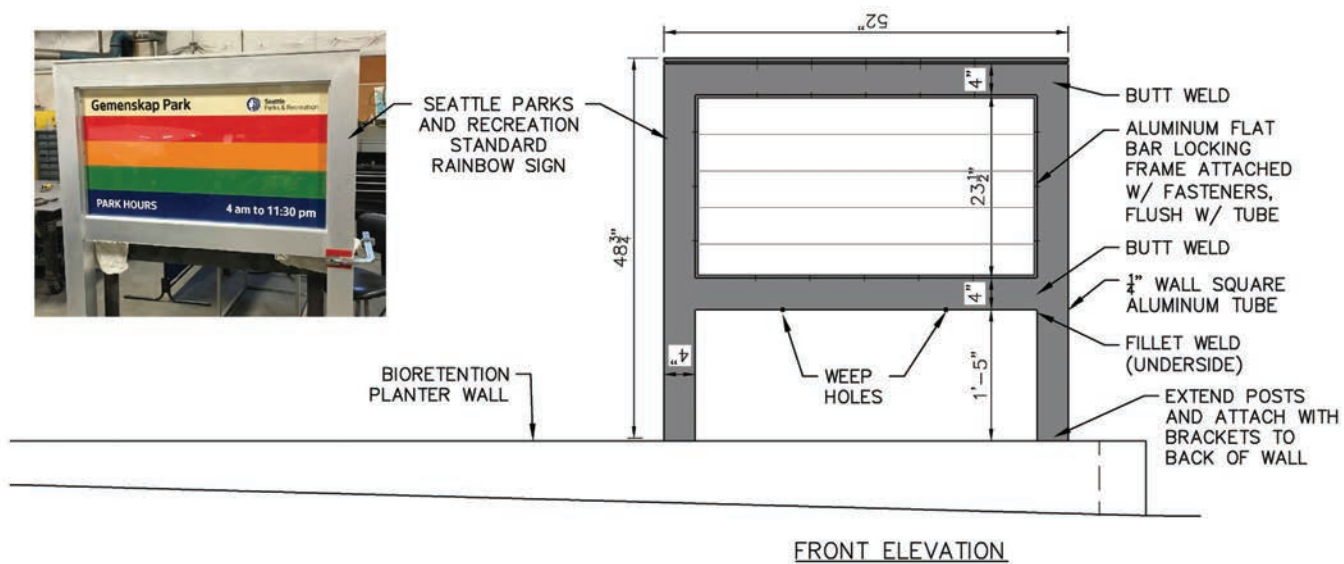


PLANTING PALETTE

⑩ SCALE: NTS

PROPOSED MATERIALS, FINISHES, AND PAINT COLORS

LITTLE SAIGON LANDBANKED SITE PARK PROJECT



PARK SIGN

LITTLE SAIGON LANDBANKED SITE PARK PROJECT





ARTWORK CONCEPT: KALINA CHUNG

LITTLE SAIGON LANDBANKED SITE PARK PROJECT



KALINA CHUNG ARTWORK CONCEPT

LITTLE SAIGON LANDBANKED SITE PARK PROJECT

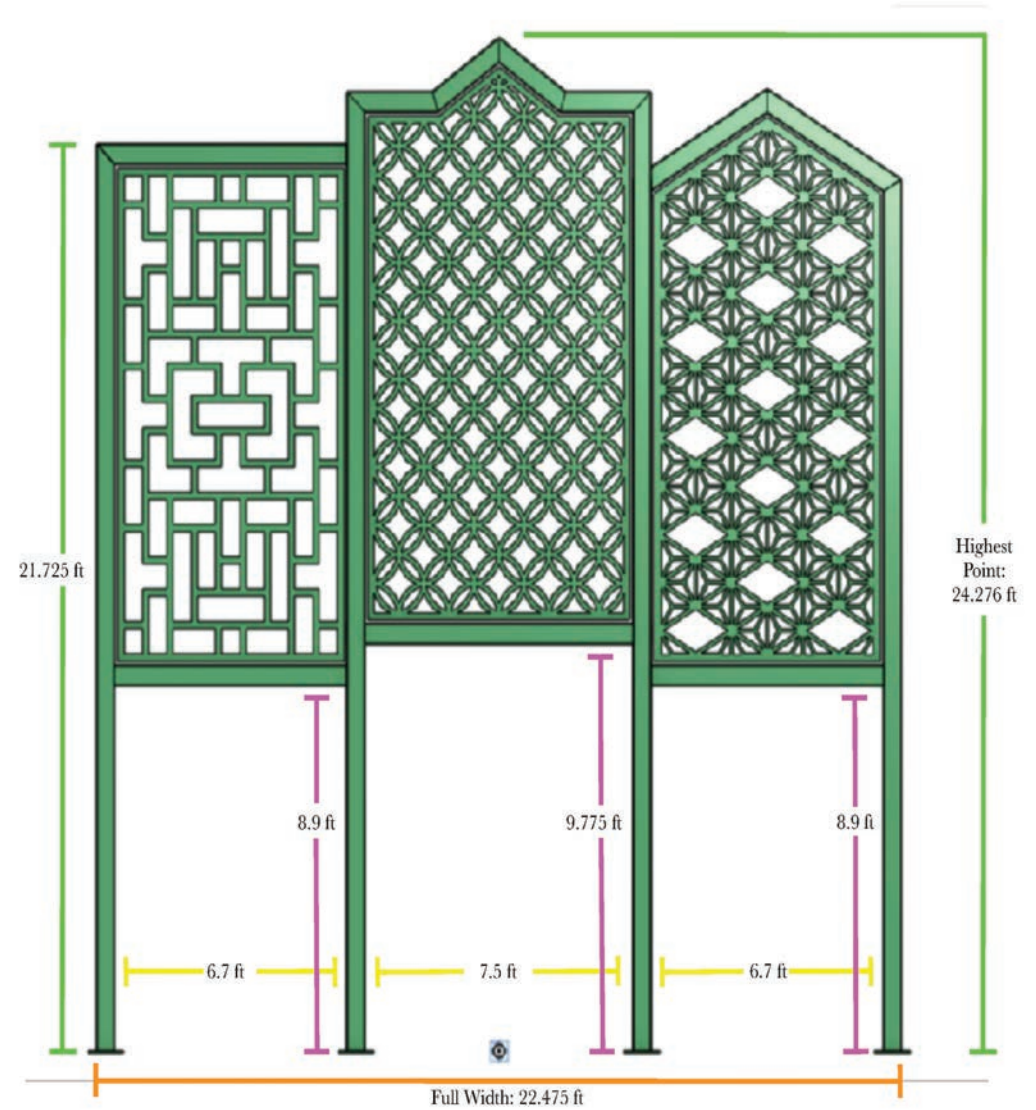
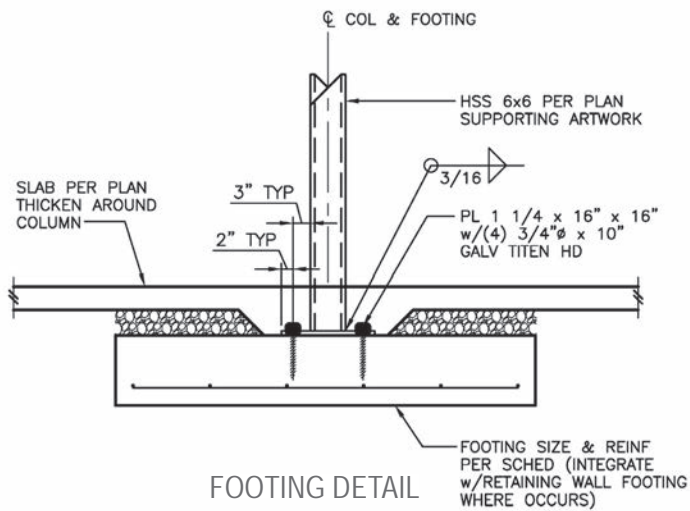


KALINA CHUNG ARTWORK CONCEPT

LITTLE SAIGON LANDBANKED SITE PARK PROJECT

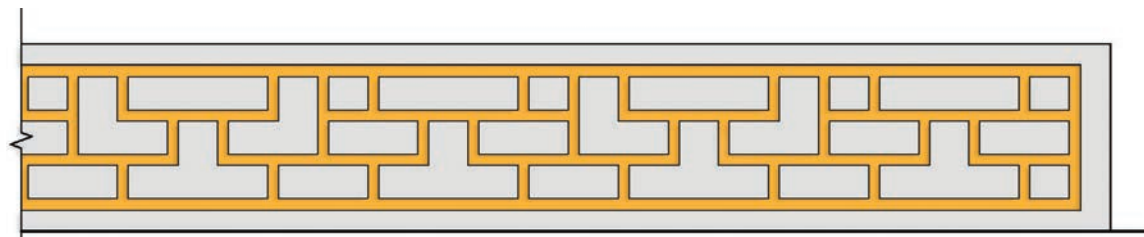


TWO-TONED GREEN



KALINA CHUNG ARTWORK CONCEPT: COLOR, DIMENSIONS, AND FOOTING

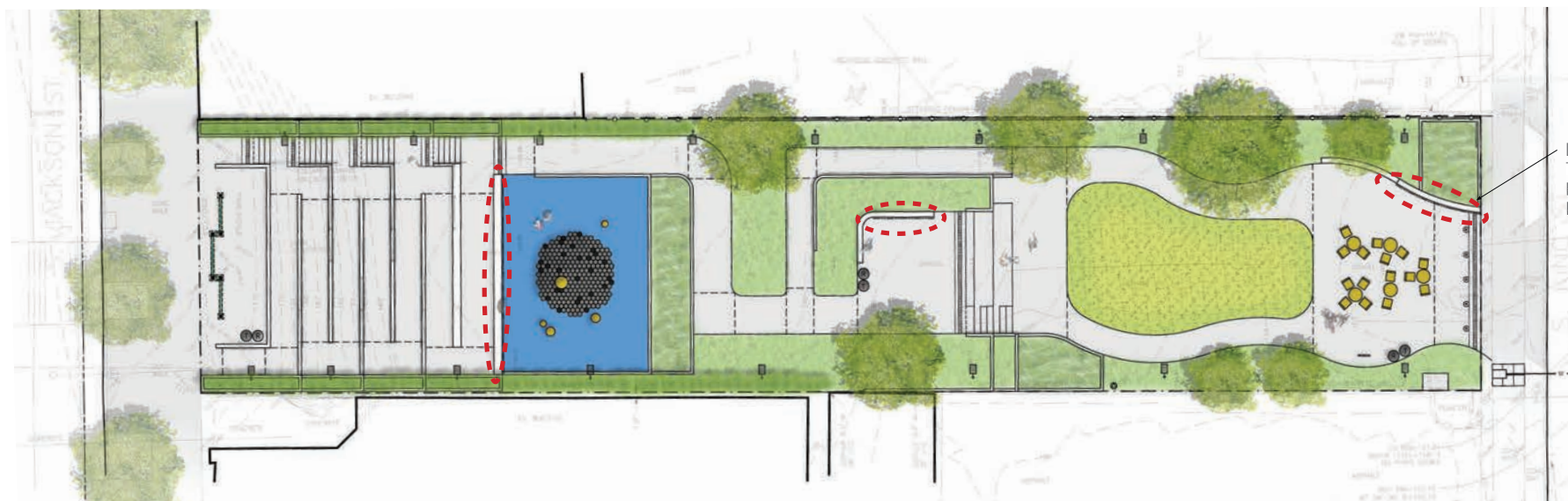
LITTLE SAIGON LANDBANKED SITE PARK PROJECT



CONCRETE BENCHES WITH SANDBLASTED PATTERN FROM GATEWAY FEATURE



SANDBLASTED AND PAINTED SIGNATURE AT JIMI HENDRIX PARK



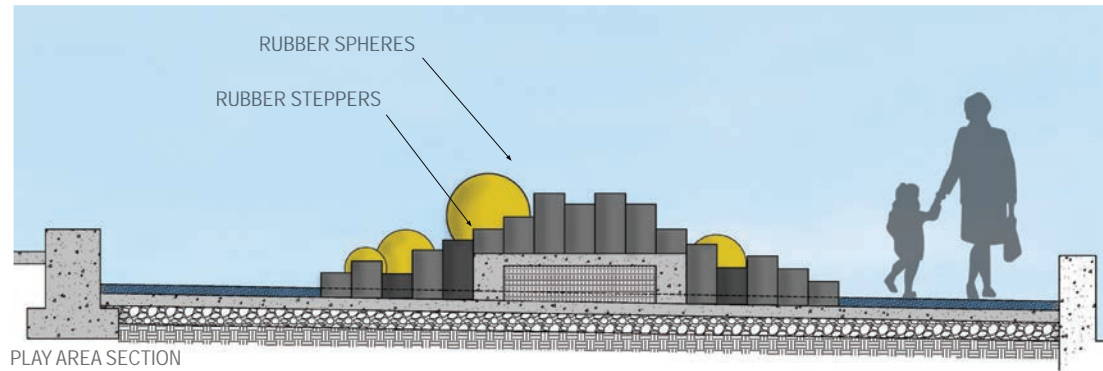
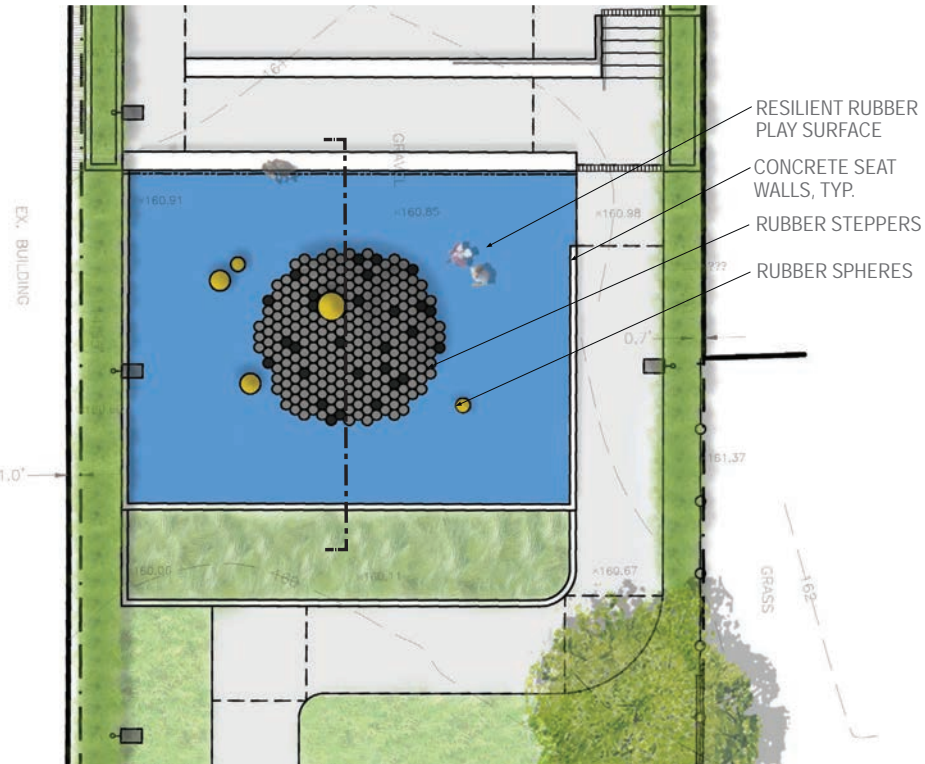
LOCATIONS ON BENCHES

LOCATION OF PATTERNS TO BE SANDBLASTED AND PAINTED ONTO FRONT FACE OF BENCHES

ARTIST GATEWAY FEATURE PATTERNS WITHIN THE PARK

LITTLE SAIGON LANDBANKED SITE PARK PROJECT





GORIC RUBBER SPHERES AND HALF-SPHERES



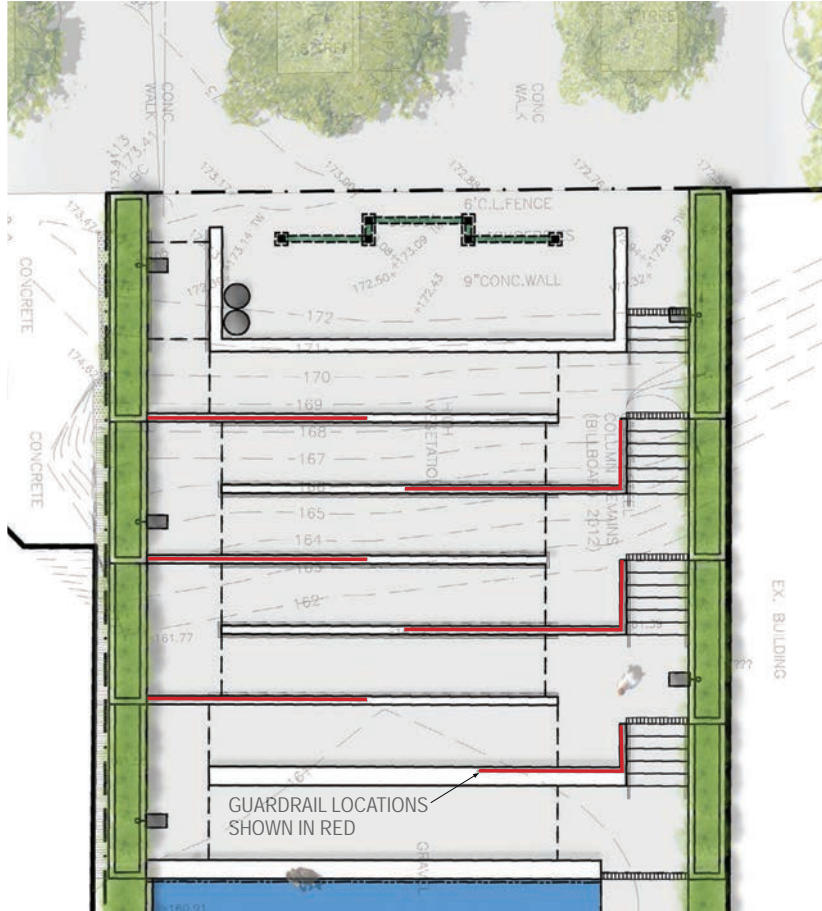
GORIC RUBBER STEPPERS

- Supportive of active play for small children to learn and practice the development of gross motor skills
- Colorful climbing balls and multi-toned steppers encourage interaction and creative play
- Safe, vibrant colored rubber surfacing under all play elements

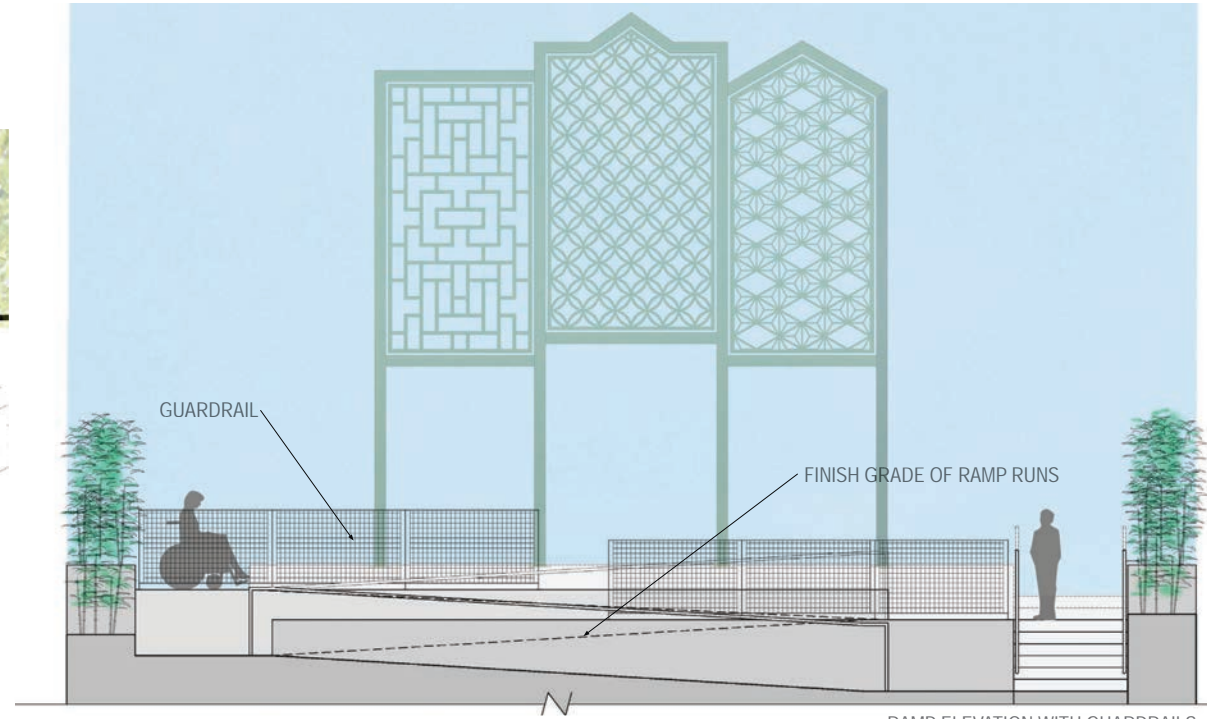
PLAY AREA

LITTLE SAIGON LANDBANKED SITE PARK PROJECT





RAMP PLAN VIEW



RAMP ELEVATION WITH GUARDRAILS



METAL BAR GRATE GUARDRAIL

GUARDRAILS

LITTLE SAIGON LANDBANKED SITE PARK PROJECT





MOVEABLE TABLES AND CHAIRS
COLOR: BUTTERCUP YELLOW



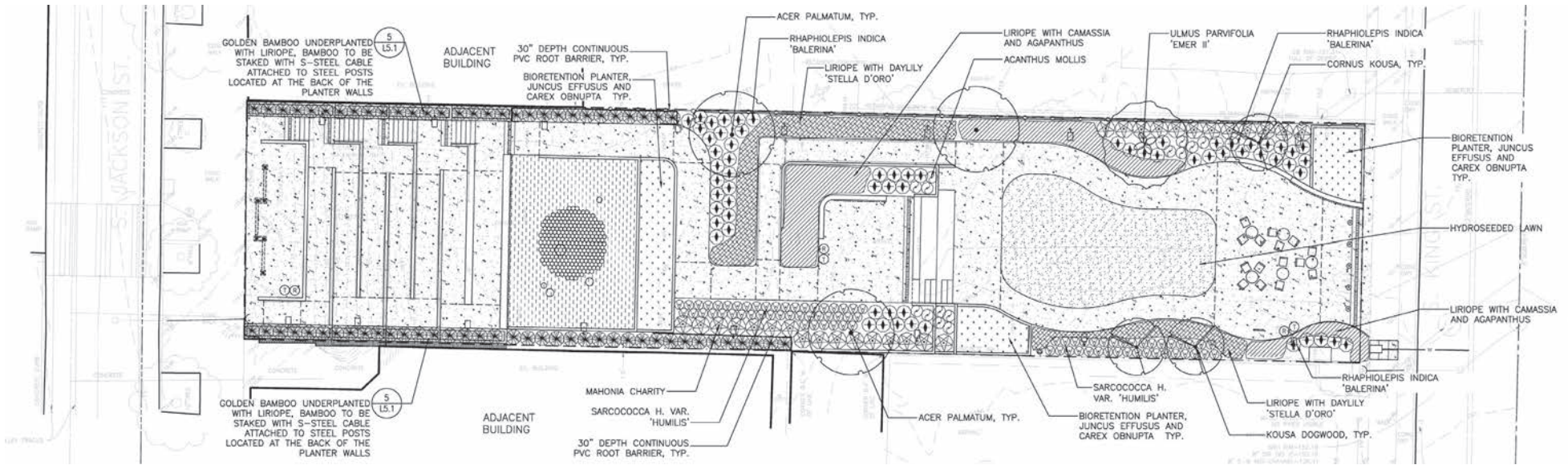
BIKE RACK
COLOR: BRUSHED STAINLESS STEEL WITH BLACK RUBBER (AS SHOWN)



TRASH/ RECYCLING RECEPTACLE
COLOR SELECTION: BLACK (AS SHOWN)

PROPOSED SITE FURNISHINGS

LITTLE SAIGON LANDBANKED SITE PARK PROJECT



CHINESE ELM TREE/
ULMUS PARVIFOLIUM



JAPANESE MAPLE/
ACER PALMATUM



GOLDEN BAMBOO



SARCOCOCCA HUMILIS



ACANTHUS MOLLIS



LIRIOPE



CAMASSIA



JUNCUS EFFUSUS*



KOUSA DOGWOOD/
CORNUS KOUSA



RHAPHIOLEPSIS BALLERINA



MAHONIA CHARITY



DAYLILY



AGAPANTHUS



CAREX OBNUPTA
*BIO RETENTION

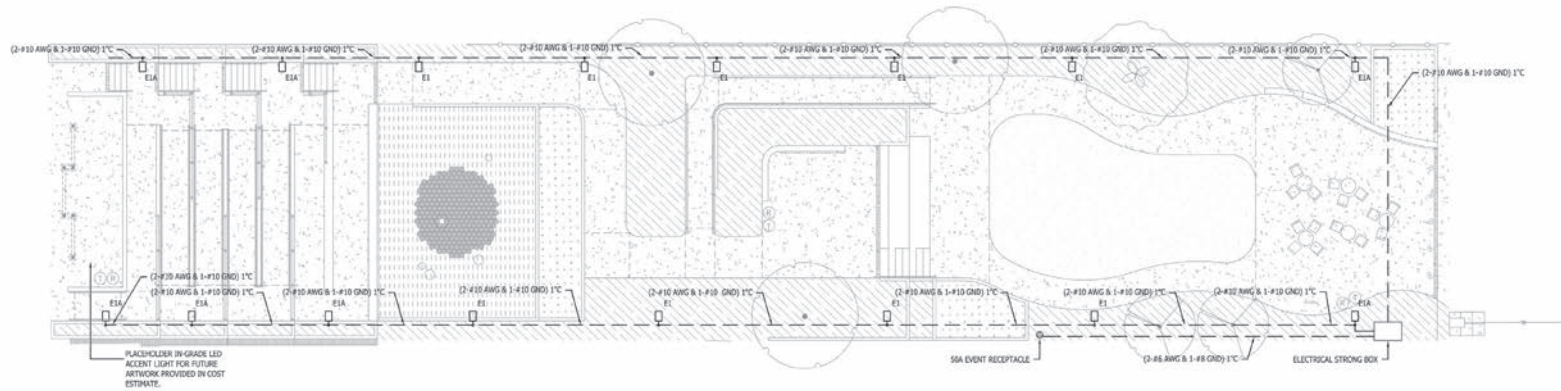
PLANTING PLAN AND PALETTE

LITTLE SAIGON LANDBANKED SITE PARK PROJECT





PROPOSED POLE LIGHT
COLOR: BLACK



PHOTOMETRIC LIGHTING RENDERING AND LIGHTING PLAN

LITTLE SAIGON LANDBANKED SITE PARK PROJECT

