

Date: June 20, 2002

To: Duane Penttila
Mark Mead
Christopher Williams
Woody Wilkinson
Kerry Lasko

From: Fritz Hedges

Subj: Decisions on Vegetation Management at Kerry Park

As you know, Ken has secluded himself from vegetation management issues involving view. He has delegated responsibility for decisions involving these issues to me.

What follows are my decisions for vegetation management at Kerry Park.

In making these decisions, I have reviewed the public record, including minutes of the Parks Board; met with representatives of the Queen Anne Community Council and the Department of Construction and Land Use (meetings were subsequent to Parks Board recommendation); and, reviewed materials submitted to me by Mark.

Based upon this review and these discussions, I believe the Department's first priority is to restore a valuable city resource which is the magnificent view from the upper level of Kerry Park. Our second priority is to increase/improve the current tree canopy of the hillside and lower park area. All of this work needs to be accomplished with consideration of available budget, slope stability, and on going maintenance.

Our proposed approach to restoring the view seems consistent with our current Tree Policy. We are proposing to transition from the existing trees, which are growing into the view, to lower growing trees. Rather than the past practice of topping inappropriate trees, we will be removing and replacing some of the existing trees. There will also be some crowning of existing trees as we move through implementation. I approve this approach at Kerry Park.

The other questions raised by the community involve how many trees need to be removed and in what time frame. I think the concept of a public viewpoint means a largely uninterrupted panorama in which it is permissible and sometimes desirable to retain a few trees in the foreground. I believe our proposed removal and planting plan meets this criteria.

As for timing, I believe our Department has an obligation to restore this view within a reasonable time frame. There will be significant improvement this year. Almost all of the view will be restored by 2005 with all tree removal completed by 2015. All new tree planting will be completed this year. I believe this phasing is responsive both to those who want the view restored as soon as possible and those who favor a much slower approach.

I also believe we have an obligation to do the following

- a) plant considerably more replacement trees than we remove (remove approximately 50 - 55 trees and plant approximately 80 trees);
- b) plant sufficiently large replacement specimens in selected areas such that the recovery time is reduced;
- c) demonstrate our ability to establish and maintain new plantings.

With these goals and objectives in mind, I approve tree removal and planting as specified in the attachments. This removal and planting schedule should be regarded as a commitment by our Department:

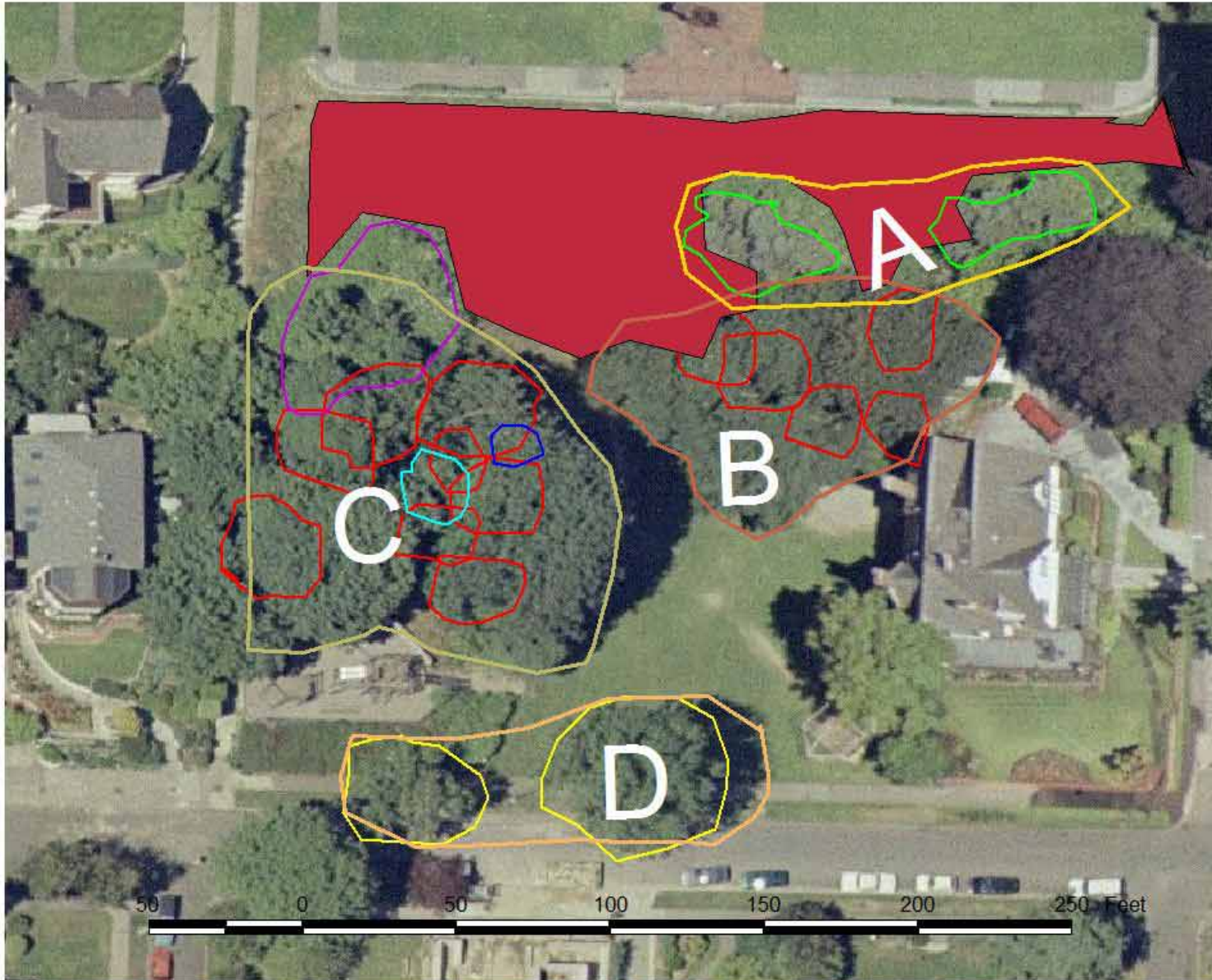
During the initial implementation and plant establishment (2002 - 2005), I am asking our parks and recreation staff who are responsible for Kerry Park to meet with the Queen Anne Community Council every year to discuss our progress, proposed amendments, and community concerns.

Attachments: (A) Map of Park Zones
(B) Removal and Planting Schedule

cc: Ken Bounds
Seattle Board of Parks Commissioners
Queen Anne Community Council
John Skelton, DCLU

Attachment B
Kerry Park Tree Removal and Planting Schedule

Zone	Trees to be Removed	Time Frame	Trees to be Planted	Time Frame
<p style="text-align: center;">A</p> <p>(West hillside area immediately below viewpoint)</p>	<p>2 groups, 15 trees each of 4-6" Spruce planted in the mid-70's and subsequently all topped at least one time. These trees are the wrong trees in the wrong place and significantly blocking the view.</p>	<p>Remove 1 group in spring of 2002 and 1 group in 2005. Roots to be left in place to aid slope stability.</p>	<p>20 Hairy Manzanita, 2 Vine Maple, 5 Amur Maple</p>	<p>Fall 2002</p>
<p style="text-align: center;">B</p> <p>(Central area near Dr. Jones House)</p>	<p>5 Norway Maples, all double trunked with decay in the crouches and all previously topped.</p>	<p>Remove 1 tree in Fall 2002, 1 in 2005, 1 in 2008, 1 in 2011 and 1 in 2015. Trees will be crowned during this time frame as necessary for public safety</p>	<p>7 Crimean Linden, 6 Amur Maples, 6 Vine Maple, 8 Strawberry</p>	<p>Fall 2002</p>
<p style="text-align: center;">C</p> <p>(West central area of lower park)</p>	<p>20 8" to 15" Norway Maple, Horse Maple and Hawthorne, all impacting view.</p>	<p>Remove 8 in 2002, 4 in 2008, 4 in 2011. Crown and trim remaining trees as necessary for view purposes during implementation time frame.</p>	<p>5 Horse Chestnut, 6 Amur Maple, 4 Paperback Maple, 4 Vine Maple</p>	<p>Fall 2002</p>
<p style="text-align: center;">D</p> <p>(Street trees along West Prospect Street, lower area of park)</p>	<p>2 approximately 13", Ash trees both suffering from previous topping and rot.</p>	<p>Remove in Spring of 2002, grind stumps on all trees.</p>	<p>7 2-3" Dove trees, sufficiently large to reduce recovery time</p>	<p>Fall 2002</p>



Kerry Viewpoint Vegetation Management

Zones

-  A
-  B
-  C
-  D
-  Spruce
-  Brush
-  Blackberry & Maple
-  Ash.
-  Hawthorne
-  Horse Chestnut
-  Norway Maple

