

PHINNEY RIDGE

To view and comment on interactive maps, visit zoning.OneSeattlePlan.com.

Proposed zoning changes

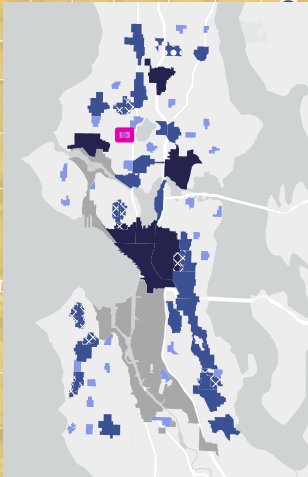
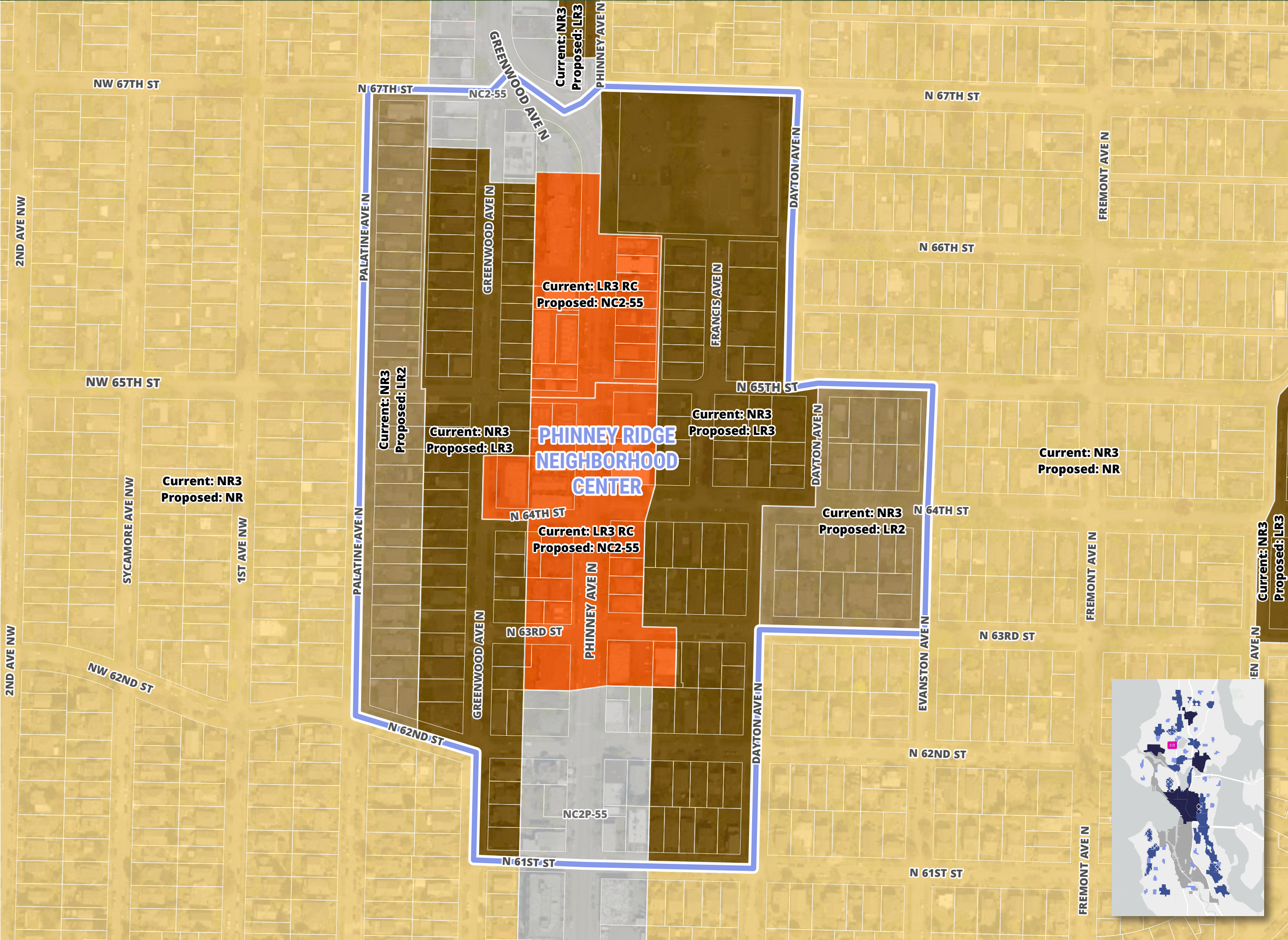
- Neighborhood Residential (NR)**
NR (formerly called Single Family) is Seattle's lowest-density residential zone. It allows a mix of primarily attached and detached homes. Updated NR zoning would allow more middle housing types and fulfill requirements in House Bill 1110.
- Lowrise 1 (LR1)**
LR1 is a low-density residential zone that allows townhouse-style development at a three-story scale.
- Lowrise 2 (LR2)**
LR2 is a residential zone that allows multifamily development up to four stories.
- Lowrise 3 (LR3)**
LR3 is a residential zone that allows multifamily development up to five stories.
- Midrise (MR1 or MR2)**
MR1 is a proposed new residential zone that would allow multifamily development up to six stories. MR2, currently simply called "Midrise," is a residential zone that allows multifamily development up to eight stories.
- Neighborhood Commercial (NC)**
NC zones are mixed-use areas that allow a range of retail, office, institutional, and residential uses.
- Commercial (C)**
C zones are mixed-use areas that allow a range of retail, office, institutional, light industrial, and auto-oriented commercial uses.
- No rezone proposed

Growth Strategy place types

- Regional Center**
Most densely populated neighborhoods, with a mix of housing, office, retail, entertainment, and access to regional transit. These areas can include zoning for high-rise towers.
- Urban Center**
Areas zoned to accommodate a mix of housing, jobs, shops, and services with access to frequent transit. Residential and mixed-use structures up to eight stories are allowed, with higher densities around light rail stations.
- Center expansion**
Proposed expansion of a Regional or Urban Center
- Neighborhood Center**
These areas are a new designation situated in residential areas across the city and designed to accommodate a diverse mix of moderate-density housing around existing commercial districts and frequent transit.



ZONING UPDATE



To view and comment on interactive maps, visit zoning.OneSeattlePlan.com.

Neighborhood Residential (NR)
NR (formerly called Single Family) is Seattle's lowest-density residential zone. It allows a mix of primarily attached and detached homes. Updated NR zoning would allow more middle housing types and fulfill requirements in House Bill 1110.

LRI is a low-density residential zone that allows townhouse-style development at a three-story scale.

LR2 is a residential zone that allows multifamily development up to four stories.

LR3 is a residential zone that allows multifamily development up to five stories.

MR1 is a proposed new residential zone that would allow multifamily development up to six stories. MR2, currently simply called "Midrise," is a residential zone that allows multifamily development up to eight stories.

Neighborhood Commercial (NC)
NC zones are mixed-use areas that allow a range of retail, office, institutional, and residential uses.

Commercial (C)
C zones are mixed-use areas that allow a range of retail, office, institutional, light industrial, and auto-oriented commercial uses.

☐ No rezone proposed

Regional Center Most densely populated neighborhoods, with a mix of housing, office, retail, entertainment, and access to regional transit. These areas can include zoning for high-rise towers.

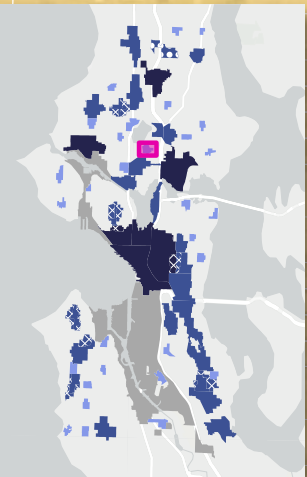
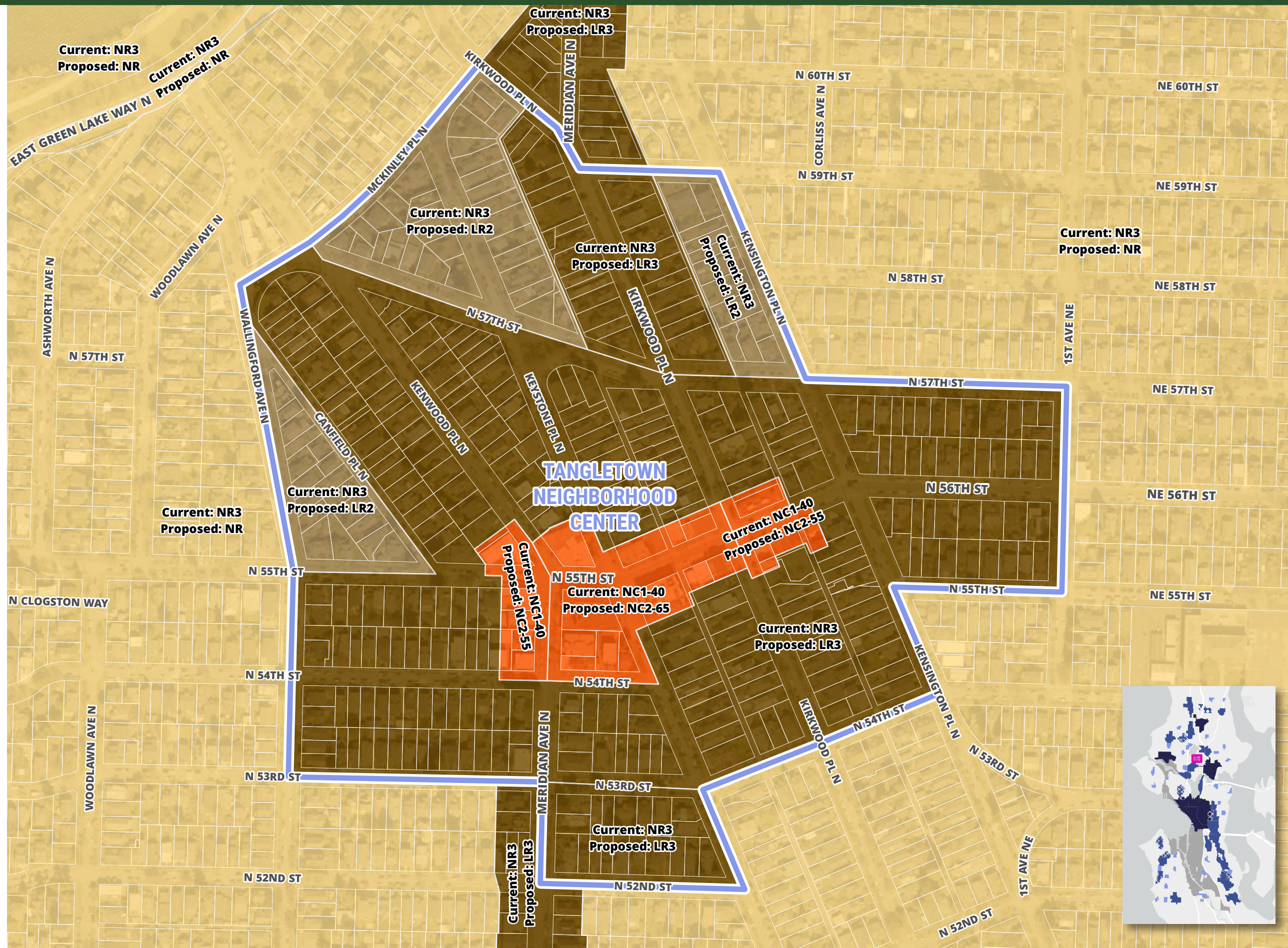
Areas zoned to accommodate a mix of housing, jobs, shops, and services with access to frequent transit. Residential and mixed-use structures up to eight stories are allowed, with higher densities around light rail stations.

 Center expansion
Proposed expansion of a Regional or Urban Center

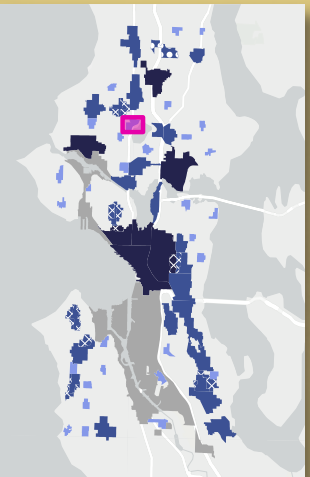
Neighborhood Center: These areas are a new designation situated in residential areas across the city and designed to accommodate a diverse mix of moderate-density housing around existing commercial districts and frequent transit.



ZONING UPDATE

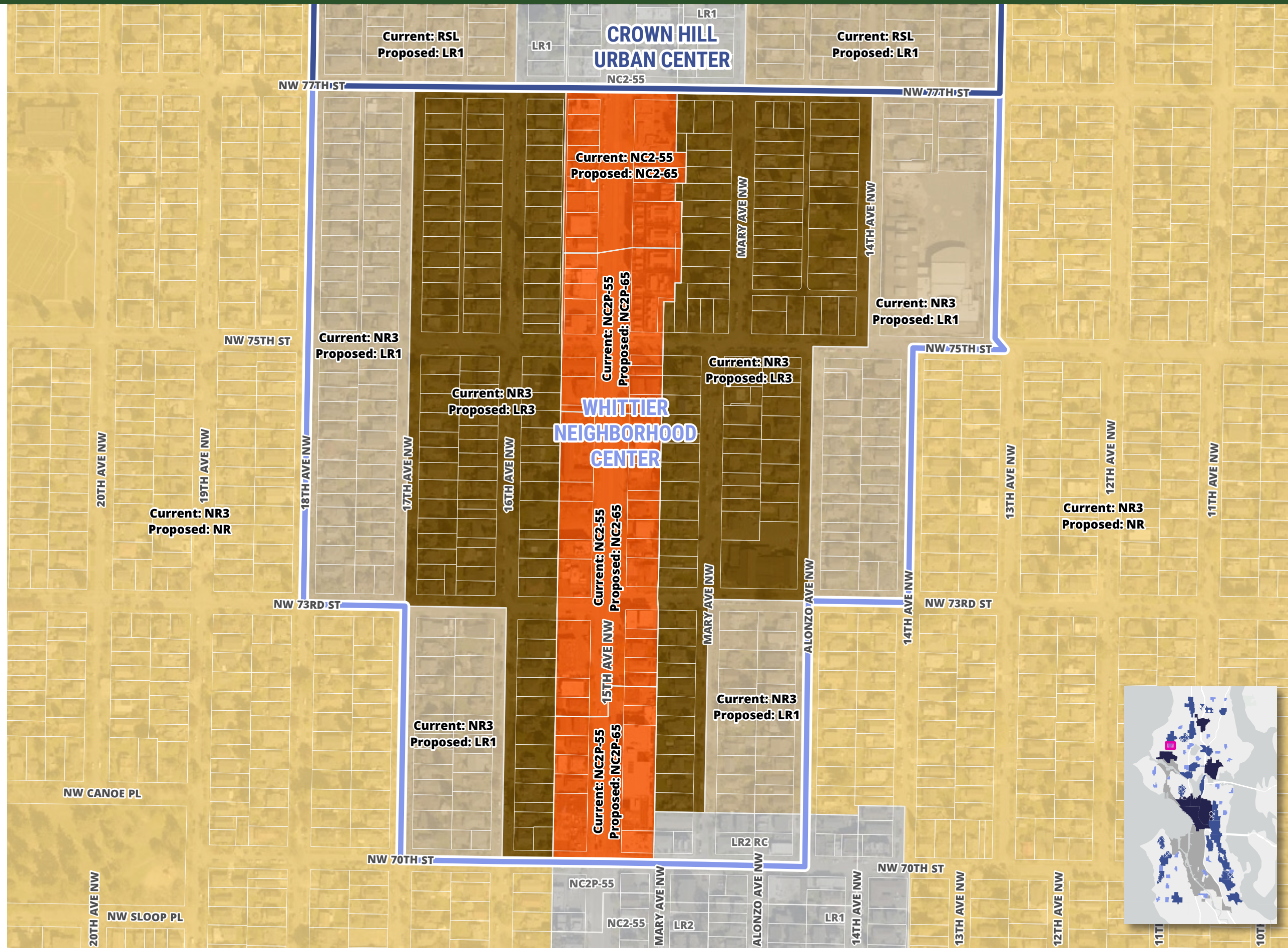


To view and comment on interactive maps, visit [zoning.OneSeattlePlan.com](https://www.zoning.OneSeattlePlan.com).





ZONING UPDATE



BALLARD

To view and comment on interactive maps, visit zoning.OneSeattlePlan.com.

Proposed zoning changes

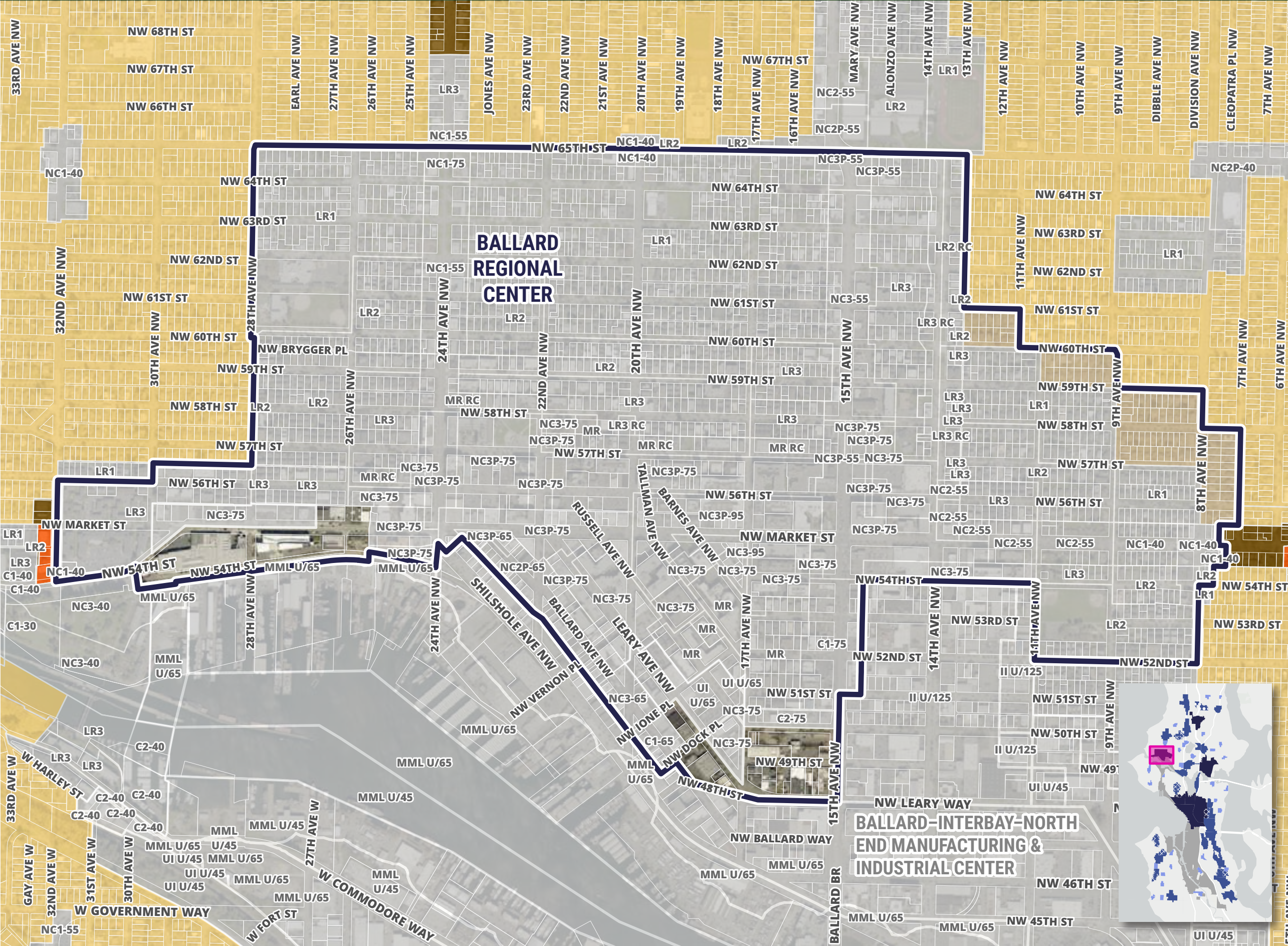
- Neighborhood Residential (NR)**
NR (formerly called Single Family) is Seattle's lowest-density residential zone. It allows a mix of primarily attached and detached homes. Updated NR zoning would allow more middle housing types and fulfill requirements in House Bill 1110.
- Lowrise 1 (LR1)**
LR1 is a low-density residential zone that allows townhouse-style development at a three-story scale.
- Lowrise 2 (LR2)**
LR2 is a residential zone that allows multifamily development up to four stories.
- Lowrise 3 (LR3)**
LR3 is a residential zone that allows multifamily development up to five stories.
- Midrise (MR1 or MR2)**
MR1 is a proposed new residential zone that would allow multifamily development up to six stories. MR2, currently simply called "Midrise," is a residential zone that allows multifamily development up to eight stories.
- Neighborhood Commercial (NC)**
NC zones are mixed-use areas that allow a range of retail, office, institutional, and residential uses.
- Commercial (C)**
C zones are mixed-use areas that allow a range of retail, office, institutional, light industrial, and auto-oriented commercial uses.
- No rezone proposed

Growth Strategy place types

- Regional Center**
Most densely populated neighborhoods, with a mix of housing, office, retail, entertainment, and access to regional transit. These areas can include zoning for high-rise towers.
- Urban Center**
Areas zoned to accommodate a mix of housing, jobs, shops, and services with access to frequent transit. Residential and mixed-use structures up to eight stories are allowed, with higher densities around light rail stations.
- Center expansion**
Proposed expansion of a Regional or Urban Center
- Neighborhood Center**
These areas are a new designation situated in residential areas across the city and designed to accommodate a diverse mix of moderate-density housing around existing commercial districts and frequent transit.



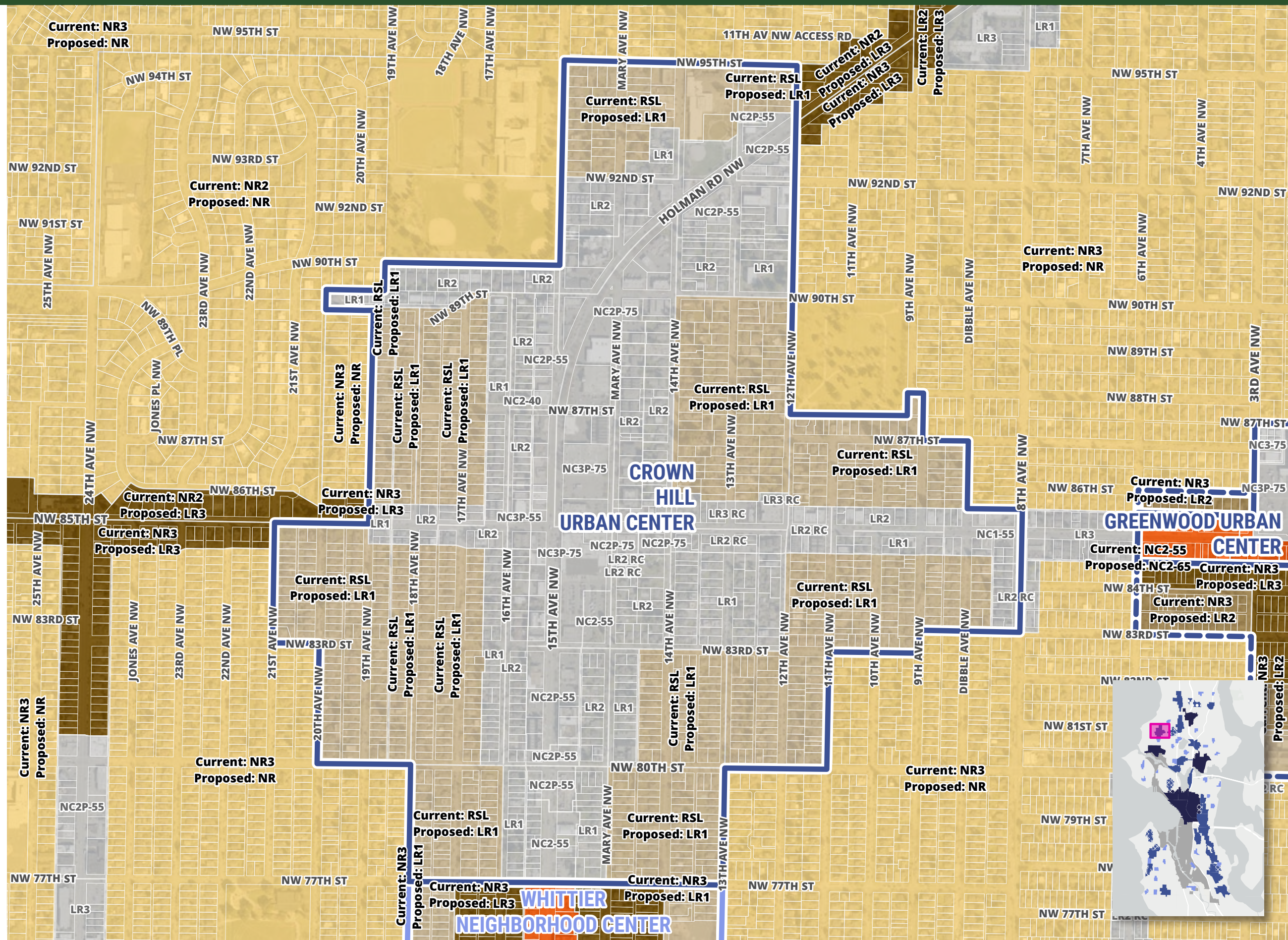
ZONING UPDATE



To view and comment on interactive maps, visit [zoning.OneSeattlePlan.com](https://www.zoning.OneSeattlePlan.com).



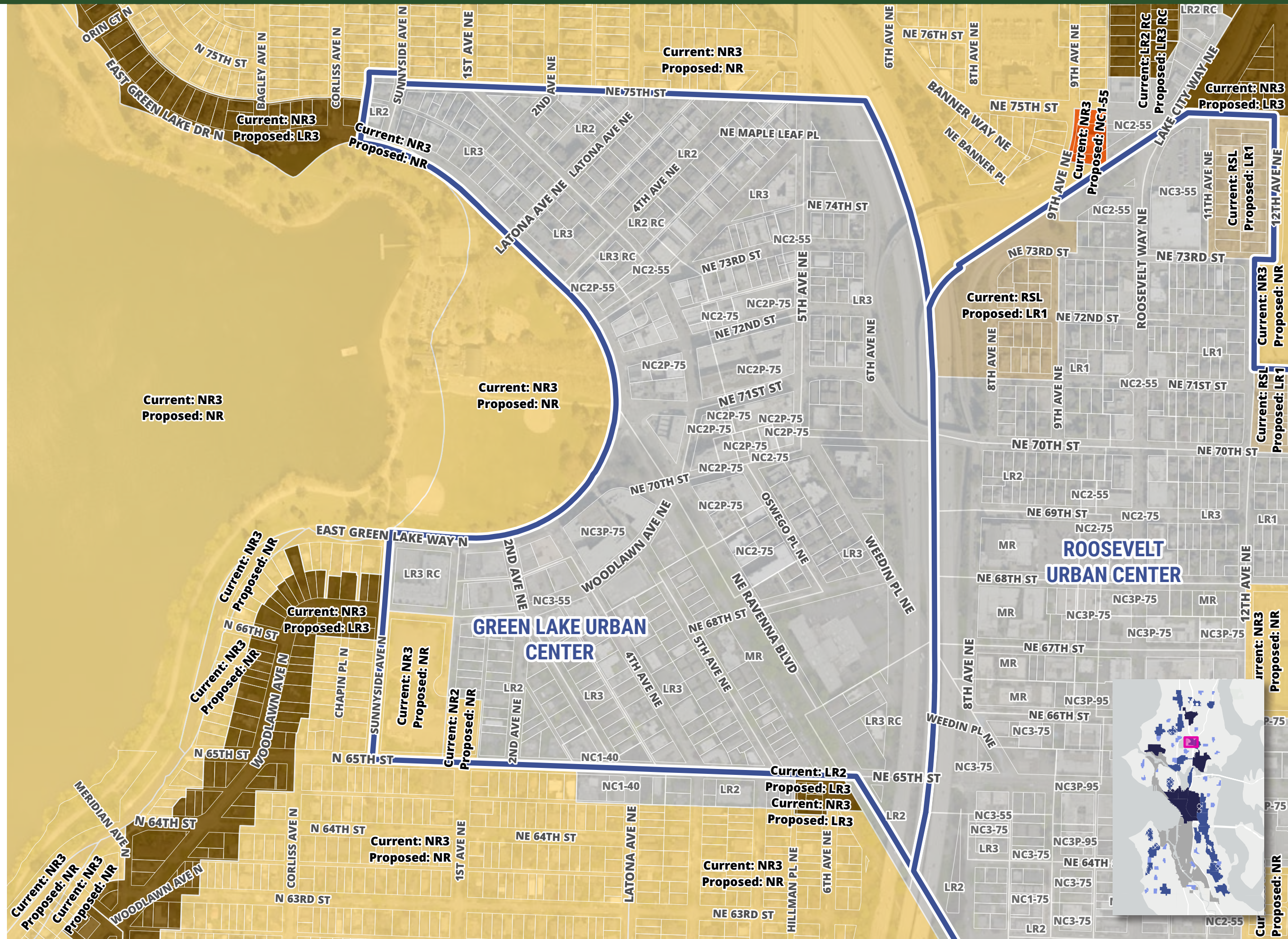
ZONING UPDATE



To view and comment on interactive maps, visit [zoning.OneSeattlePlan.com](https://www.zoning.OneSeattlePlan.com).



ZONING UPDATE



GREENWOOD

To view and comment on interactive maps, visit zoning.OneSeattlePlan.com.

Proposed zoning changes

- Neighborhood Residential (NR)**
NR (formerly called Single Family) is Seattle's lowest-density residential zone. It allows a mix of primarily attached and detached homes. Updated NR zoning would allow more middle housing types and fulfill requirements in House Bill 1110.
- Lowrise 1 (LR1)**
LR1 is a low-density residential zone that allows townhouse-style development at a three-story scale.
- Lowrise 2 (LR2)**
LR2 is a residential zone that allows multifamily development up to four stories.
- Lowrise 3 (LR3)**
LR3 is a residential zone that allows multifamily development up to five stories.
- Midrise (MR1 or MR2)**
MR1 is a proposed new residential zone that would allow multifamily development up to six stories. MR2, currently simply called "Midrise," is a residential zone that allows multifamily development up to eight stories.
- Neighborhood Commercial (NC)**
NC zones are mixed-use areas that allow a range of retail, office, institutional, and residential uses.
- Commercial (C)**
C zones are mixed-use areas that allow a range of retail, office, institutional, light industrial, and auto-oriented commercial uses.
- No rezone proposed

Growth Strategy place types

- Regional Center**
Most densely populated neighborhoods, with a mix of housing, office, retail, entertainment, and access to regional transit. These areas can include zoning for high-rise towers.
- Urban Center**
Areas zoned to accommodate a mix of housing, jobs, shops, and services with access to frequent transit. Residential and mixed-use structures up to eight stories are allowed, with higher densities around light rail stations.
- Center expansion**
Proposed expansion of a Regional or Urban Center
- Neighborhood Center**
These areas are a new designation situated in residential areas across the city and designed to accommodate a diverse mix of moderate-density housing around existing commercial districts and frequent transit.



ZONING UPDATE

