

MADISON PARK

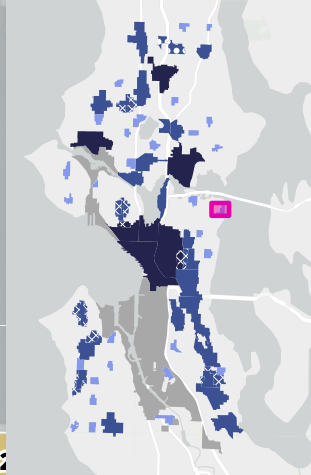
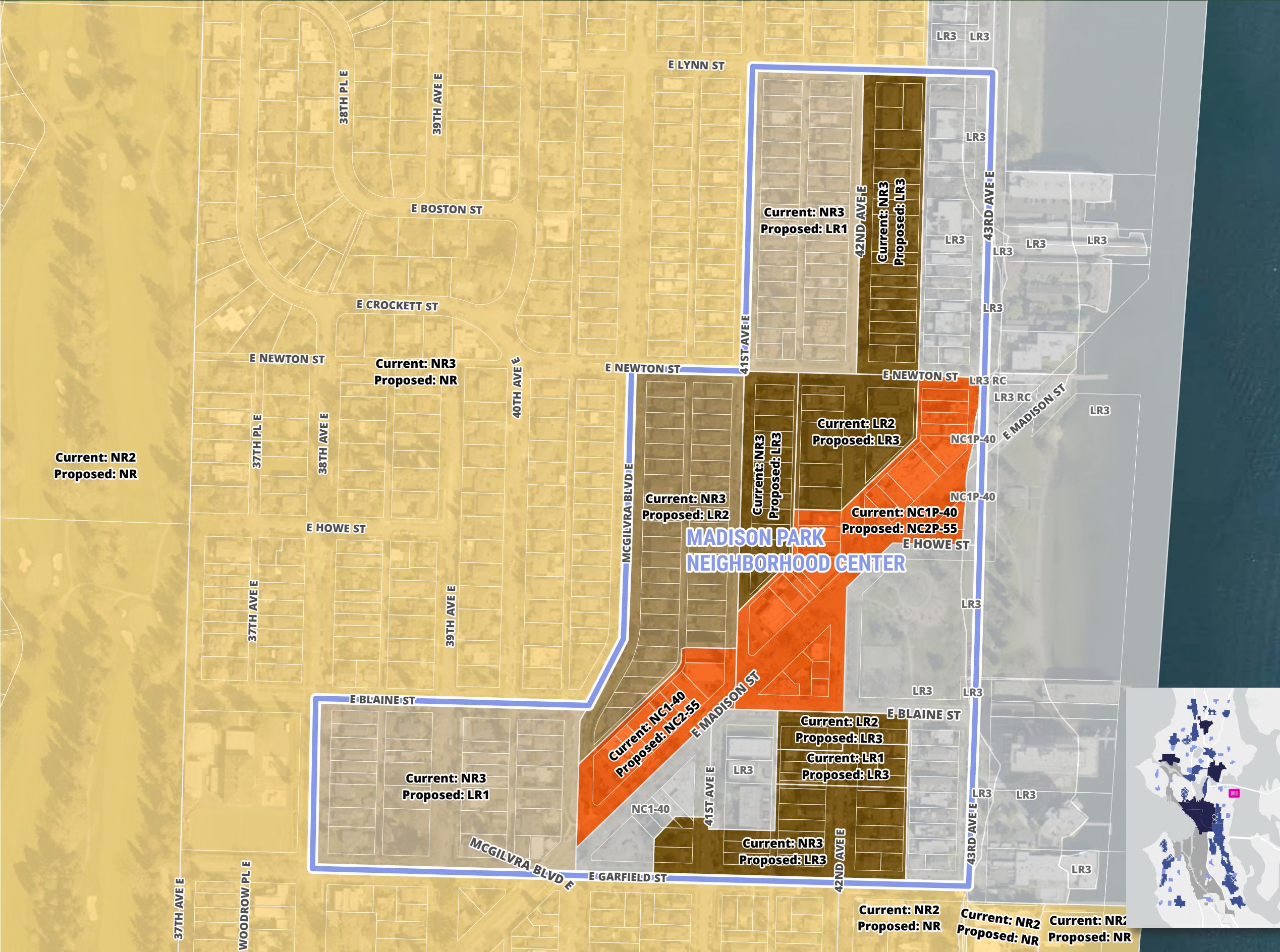
To view and comment on interactive maps, visit zoning.OneSeattlePlan.com.

Proposed zoning changes

- Neighborhood Residential (NR)**
NR (formerly called Single Family) is Seattle's lowest-density residential zone. It allows a mix of primarily attached and detached homes. Updated NR zoning would allow more middle housing types and fulfill requirements in House Bill 1110.
- Lowrise 1 (LR1)**
LR1 is a low-density residential zone that allows townhouse-style development at a three-story scale.
- Lowrise 2 (LR2)**
LR2 is a residential zone that allows multifamily development up to four stories.
- Lowrise 3 (LR3)**
LR3 is a residential zone that allows multifamily development up to five stories.
- Midrise (MR1 or MR2)**
MR1 is a proposed new residential zone that would allow multifamily development up to six stories. MR2, currently simply called "Midrise," is a residential zone that allows multifamily development up to eight stories.
- Neighborhood Commercial (NC)**
NC zones are mixed-use areas that allow a range of retail, office, institutional, and residential uses.
- Commercial (C)**
C zones are mixed-use areas that allow a range of retail, office, institutional, light industrial, and auto-oriented commercial uses.
- No rezone proposed

Growth Strategy place types

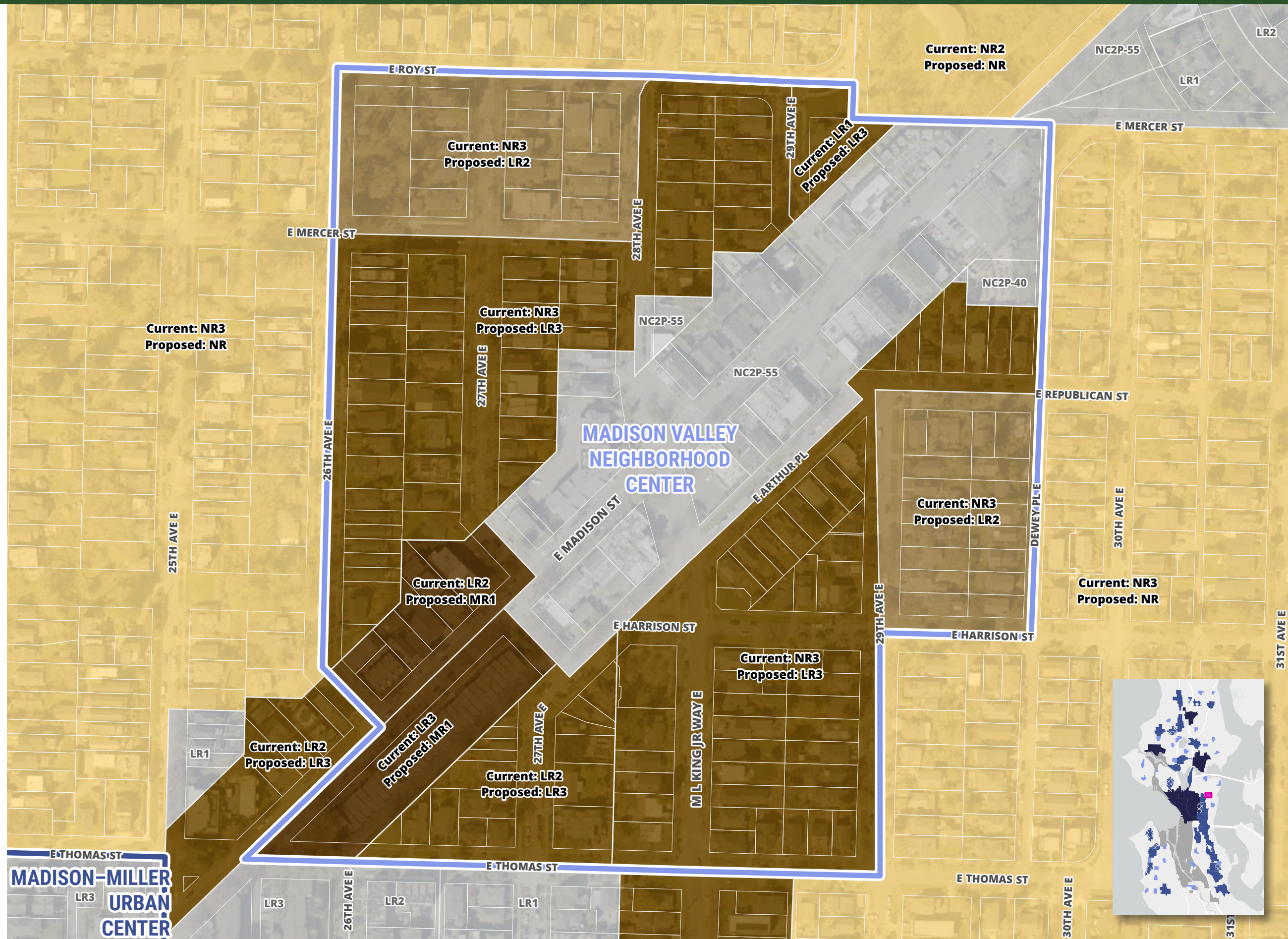
- Regional Center**
Most densely populated neighborhoods, with a mix of housing, office, retail, entertainment, and access to regional transit. These areas can include zoning for high-rise towers.
- Urban Center**
Areas zoned to accommodate a mix of housing, jobs, shops, and services with access to frequent transit. Residential and mixed-use structures up to eight stories are allowed, with higher densities around light rail stations.
- Center expansion**
Proposed expansion of a Regional or Urban Center
- Neighborhood Center**
These areas are a new designation situated in residential areas across the city and designed to accommodate a diverse mix of moderate-density housing around existing commercial districts and frequent transit.



To view and comment on interactive maps, visit [zoning.OneSeattlePlan.com](https://www.zoning.OneSeattlePlan.com).

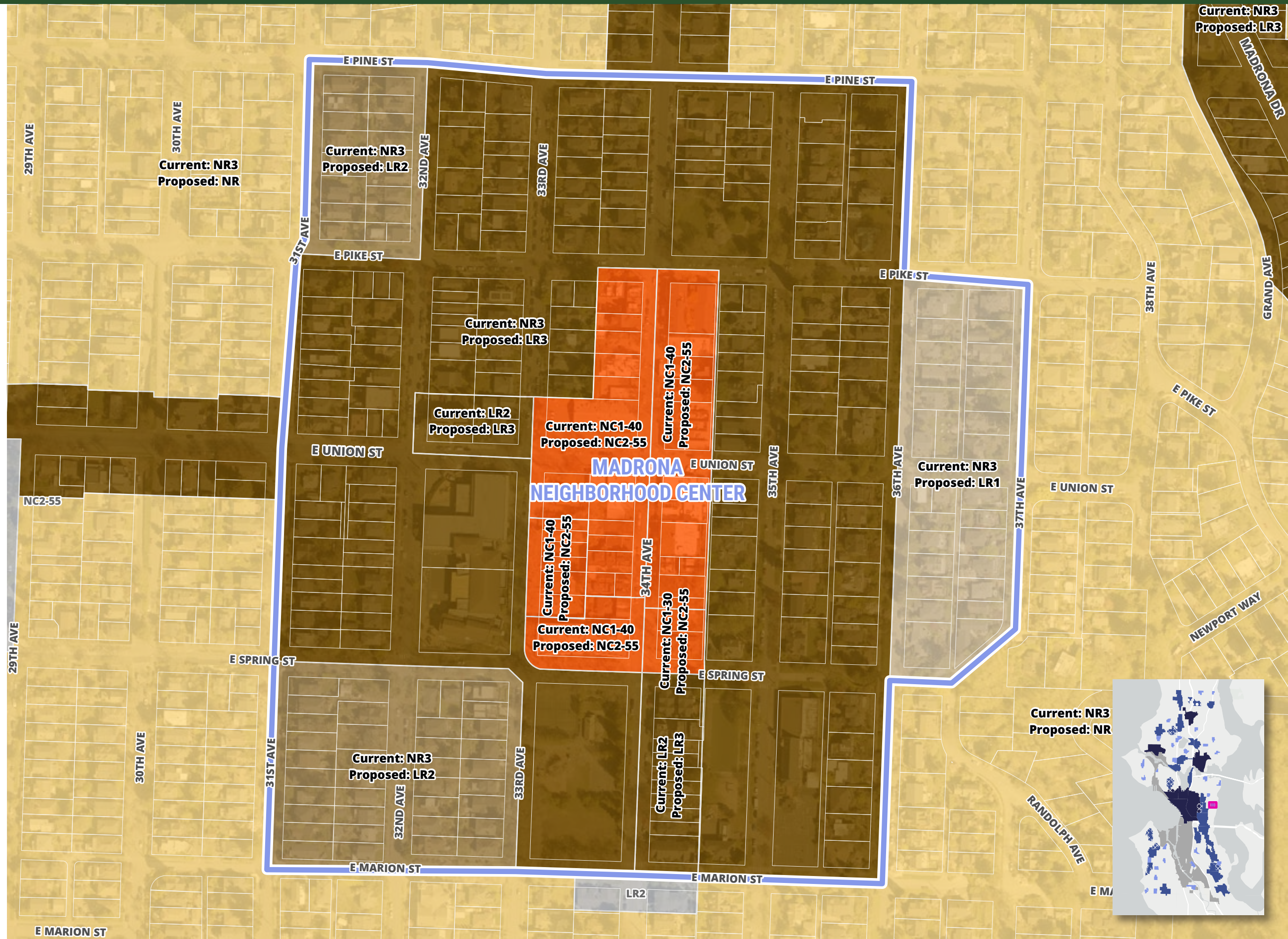
Mayor Herndon's **ONE SEATTLE PLAN**
COMPREHENSIVE PLAN UPDATE

ZONING UPDATE



To view and comment on interactive maps, visit [zoning.OneSeattlePlan.com](https://www.zoning.OneSeattlePlan.com).

ZONING UPDATE



MONTLAKE

To view and comment on interactive maps, visit [zoning.OneSeattlePlan.com](https://www.zoning.one-seattle-plan.com).

Proposed zoning changes

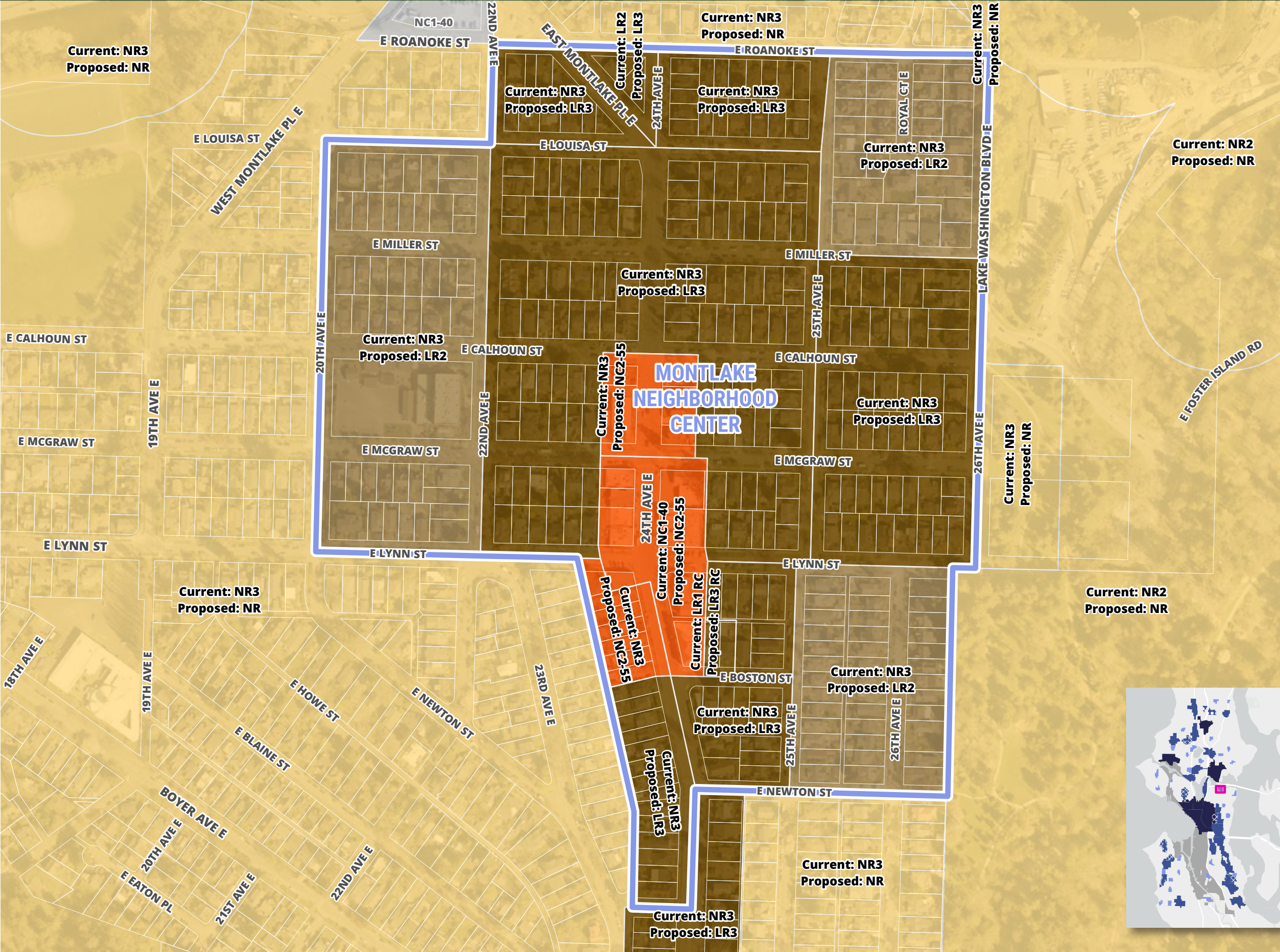
- Neighborhood Residential (NR)**
NR (formerly called Single Family) is Seattle's lowest-density residential zone. It allows a mix of primarily attached and detached homes. Updated NR zoning would allow more middle housing types and fulfill requirements in House Bill 1110.
- Lowrise 1 (LR1)**
LR1 is a low-density residential zone that allows townhouse-style development at a three-story scale.
- Lowrise 2 (LR2)**
LR2 is a residential zone that allows multifamily development up to four stories.
- Lowrise 3 (LR3)**
LR3 is a residential zone that allows multifamily development up to five stories.
- Midrise (MR1 or MR2)**
MR1 is a proposed new residential zone that would allow multifamily development up to six stories. MR2, currently simply called "Midrise," is a residential zone that allows multifamily development up to eight stories.
- Neighborhood Commercial (NC)**
NC zones are mixed-use areas that allow a range of retail, office, institutional, and residential uses.
- Commercial (C)**
C zones are mixed-use areas that allow a range of retail, office, institutional, light industrial, and auto-oriented commercial uses.
- No rezone proposed

Growth Strategy place types

- Regional Center**
Most densely populated neighborhoods, with a mix of housing, office, retail, entertainment, and access to regional transit. These areas can include zoning for high-rise towers.
- Urban Center**
Areas zoned to accommodate a mix of housing, jobs, shops, and services with access to frequent transit. Residential and mixed-use structures up to eight stories are allowed, with higher densities around light rail stations.
- Center expansion**
Proposed expansion of a Regional or Urban Center
- Neighborhood Center**
These areas are a new designation situated in residential areas across the city and designed to accommodate a diverse mix of moderate-density housing around existing commercial districts and frequent transit.



ZONING UPDATE



CENTRAL DISTRICT

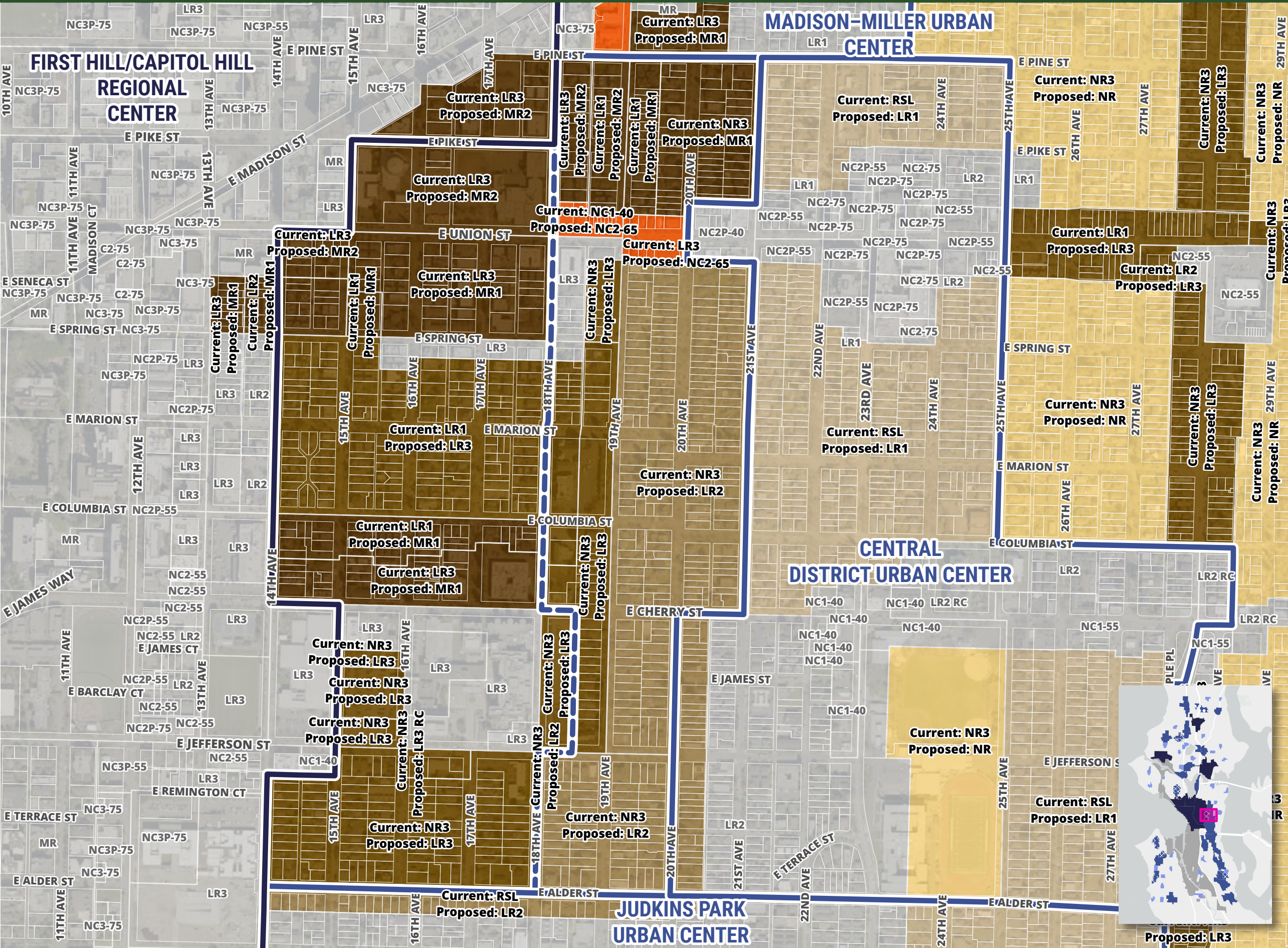
To view and comment on interactive maps, visit zoning.OneSeattlePlan.com.

Proposed zoning changes

- Neighborhood Residential (NR)**
NR (formerly called Single Family) is Seattle's lowest-density residential zone. It allows a mix of primarily attached and detached homes. Updated NR zoning would allow more middle housing types and fulfill requirements in House Bill 1110.
- Lowrise 1 (LR1)**
LR1 is a low-density residential zone that allows townhouse-style development at a three-story scale.
- Lowrise 2 (LR2)**
LR2 is a residential zone that allows multifamily development up to four stories.
- Lowrise 3 (LR3)**
LR3 is a residential zone that allows multifamily development up to five stories.
- Midrise (MR1 or MR2)**
MR1 is a proposed new residential zone that would allow multifamily development up to six stories. MR2, currently simply called "Midrise," is a residential zone that allows multifamily development up to eight stories.
- Neighborhood Commercial (NC)**
NC zones are mixed-use areas that allow a range of retail, office, institutional, and residential uses.
- Commercial (C)**
C zones are mixed-use areas that allow a range of retail, office, institutional, light industrial, and auto-oriented commercial uses.
- No rezone proposed

Growth Strategy place types

- Regional Center**
Most densely populated neighborhoods, with a mix of housing, office, retail, entertainment, and access to regional transit. These areas can include zoning for high-rise towers.
- Urban Center**
Areas zoned to accommodate a mix of housing, jobs, shops, and services with access to frequent transit. Residential and mixed-use structures up to eight stories are allowed, with higher densities around light rail stations.
- Center expansion**
Proposed expansion of a Regional or Urban Center
- Neighborhood Center**
These areas are a new designation situated in residential areas across the city and designed to accommodate a diverse mix of moderate-density housing around existing commercial districts and frequent transit.



FIRST HILL / CAPITOL HILL

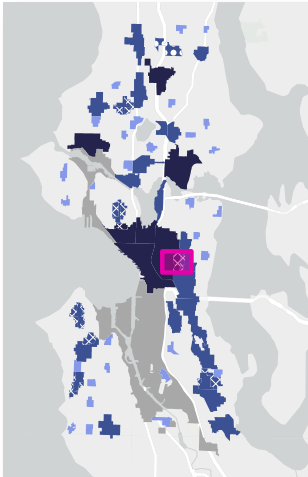
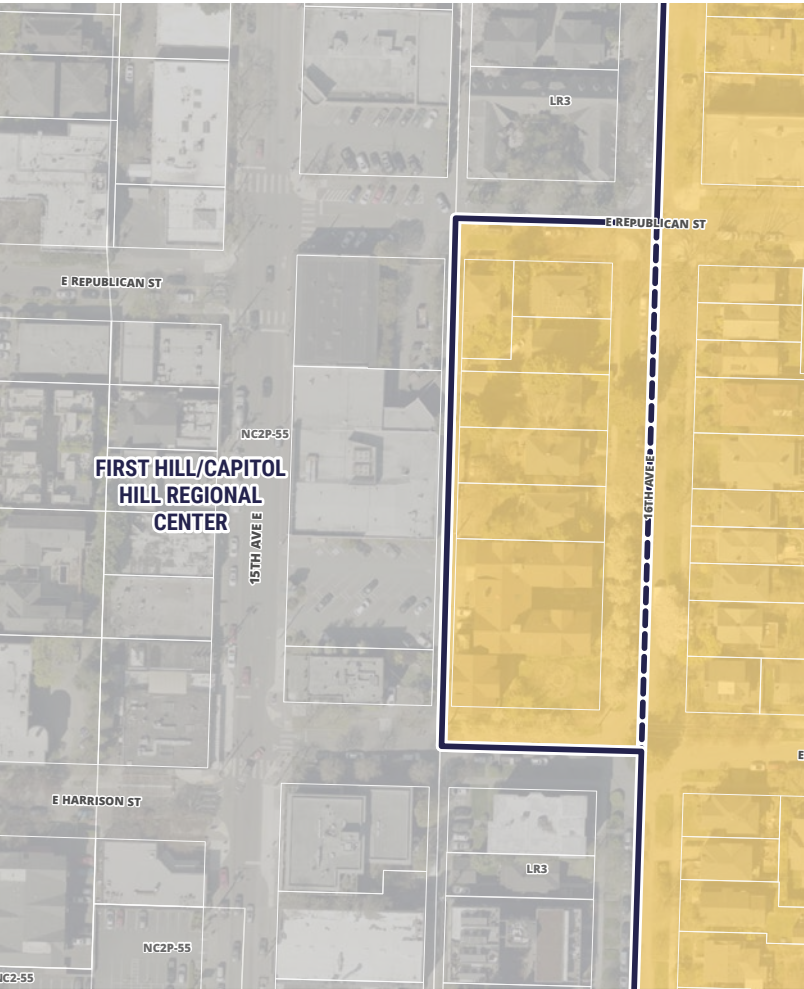
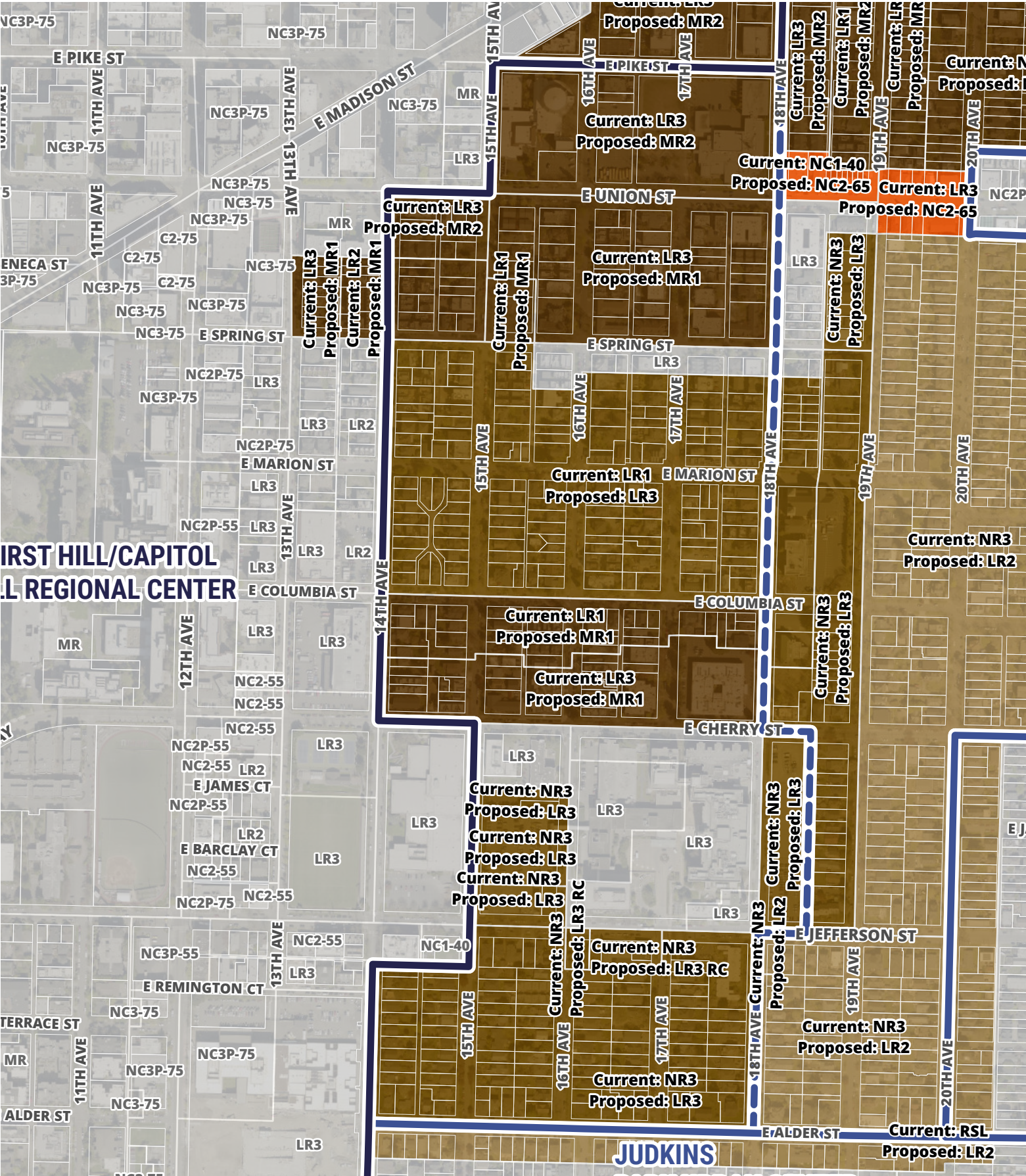
To view and comment on interactive maps, visit [zoning.OneSeattlePlan.com](https://www.zoning.OneSeattlePlan.com).

Proposed zoning changes

- Neighborhood Residential (NR)**
NR (formerly called Single Family) is Seattle's lowest-density residential zone. It allows a mix of primarily attached and detached homes. Updated NR zoning would allow more middle housing types and fulfill requirements in House Bill 1110.
- Lowrise 1 (LR1)**
LR1 is a low-density residential zone that allows townhouse-style development at a three-story scale.
- Lowrise 2 (LR2)**
LR2 is a residential zone that allows multifamily development up to four stories.
- Lowrise 3 (LR3)**
LR3 is a residential zone that allows multifamily development up to five stories.
- Midrise (MR1 or MR2)**
MR1 is a proposed new residential zone that would allow multifamily development up to six stories. MR2, currently simply called "Midrise," is a residential zone that allows multifamily development up to eight stories.
- Neighborhood Commercial (NC)**
NC zones are mixed-use areas that allow a range of retail, office, institutional, and residential uses.
- Commercial (C)**
C zones are mixed-use areas that allow a range of retail, office, institutional, light industrial, and auto-oriented commercial uses.
- No rezone proposed

Growth Strategy place types

- Regional Center**
Most densely populated neighborhoods, with a mix of housing, office, retail, entertainment, and access to regional transit. These areas can include zoning for high-rise towers.
- Urban Center**
Areas zoned to accommodate a mix of housing, jobs, shops, and services with access to frequent transit. Residential and mixed-use structures up to eight stories are allowed, with higher densities around light rail stations.
- Center expansion**
Proposed expansion of a Regional or Urban Center
- Neighborhood Center**
These areas are a new designation situated in residential areas across the city and designed to accommodate a diverse mix of moderate-density housing around existing commercial districts and frequent transit.



To view and comment on interactive maps, visit [zoning.OneSeattlePlan.com](https://www.zoning.OneSeattlePlan.com).

