



# Seattle's Comprehensive Plan Major Update

The Seattle Comprehensive Plan is the guide for how our city grows and makes investments. The Plan guides City decisions about where we locate housing and jobs, and where we invest in transportation, utilities, parks, and other public assets. Our goal is to make the city more equitable, livable, sustainable, and resilient for today's communities and future residents.

Our updated Plan will address challenges new and old: racial equity, housing costs, access to economic opportunity and education, climate change, and more. We will explore different approaches to growth and investment, along with new strategies to reduce displacement pressures.



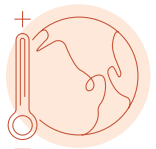
Housing



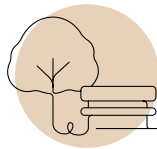
Jobs/Economy



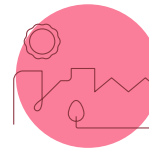
Transportation



Environmental Justice/  
Climate Change



Parks/  
Open Spaces



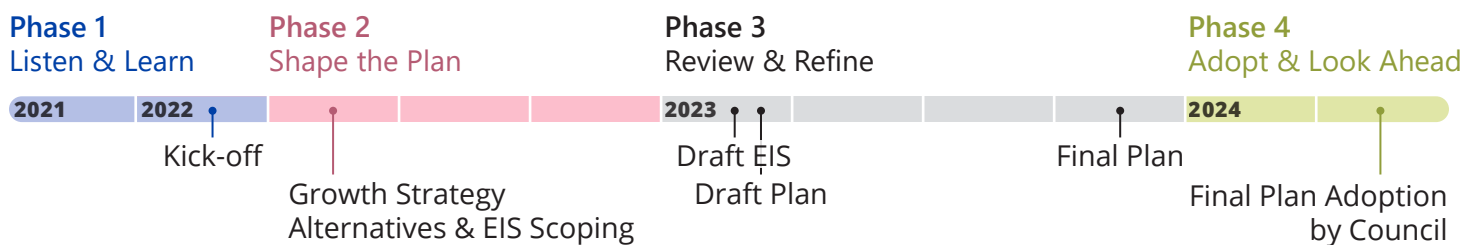
Livability

## Your voice shapes the plan

The City will seek input from all residents as we craft the plan. We invite you to join us to share your vision for the future of the City. **You can learn more, access background information and data, and stay engaged by signing up for updates at [www.seattle.gov/opcd](http://www.seattle.gov/opcd).**

As a City, we are committed to repairing past harms of previous plans and working toward an equitable future for all. To that end, Office of Planning & Community Development (OPCD) will center the voices of Black, Indigenous, and Communities of Color and other communities that are often marginalized in planning processes. This commitment is captured in OPCD's [Equitable Community Engagement Ethos](#) ([seattle.gov/opcd/about-us](http://seattle.gov/opcd/about-us)).

## Project Timeline



### For more information

[seattle.gov/opcd](http://seattle.gov/opcd)

@SeattleOPCD

[fb.com/seattleopcd](https://fb.com/seattleopcd)

### Contact

Michael Hubner  
[michael.hubner@seattle.gov](mailto:michael.hubner@seattle.gov)

To receive this document in an alternate format or language, contact Bernardo Serna, [bernardo.serna@seattle.gov](mailto:bernardo.serna@seattle.gov).