

September 2020

Equitable Development Initiative RFP Workshops

Webinar Objectives:

- EDI & EDI Fund background
- 2020 Funds Available

Equitable Development Initiative

- Equity Analysis as companion to the Comprehensive Plan update EIS to inform Growth Strategy
- Race and Social Equity Goals and Policies in the Comprehensive Plan
- Equitable Development Implementation Plan
- Equitable Development Fund for Community Driven Projects

EDI Origin Story

The EDI Origin Story

2012: South CORE

South Communities Organizing for
Racial/Regional Equity

21 community organizations visioning for
community-controlled development in the Rainier
Valley

2015: RSET

Race & Social Equity Taskforce

Advocated for and implemented Equitable
Development Implementation Plan



EDI Interim Advisory Board & Fund review committee members, 2018

MADE WITH
beautiful.ai

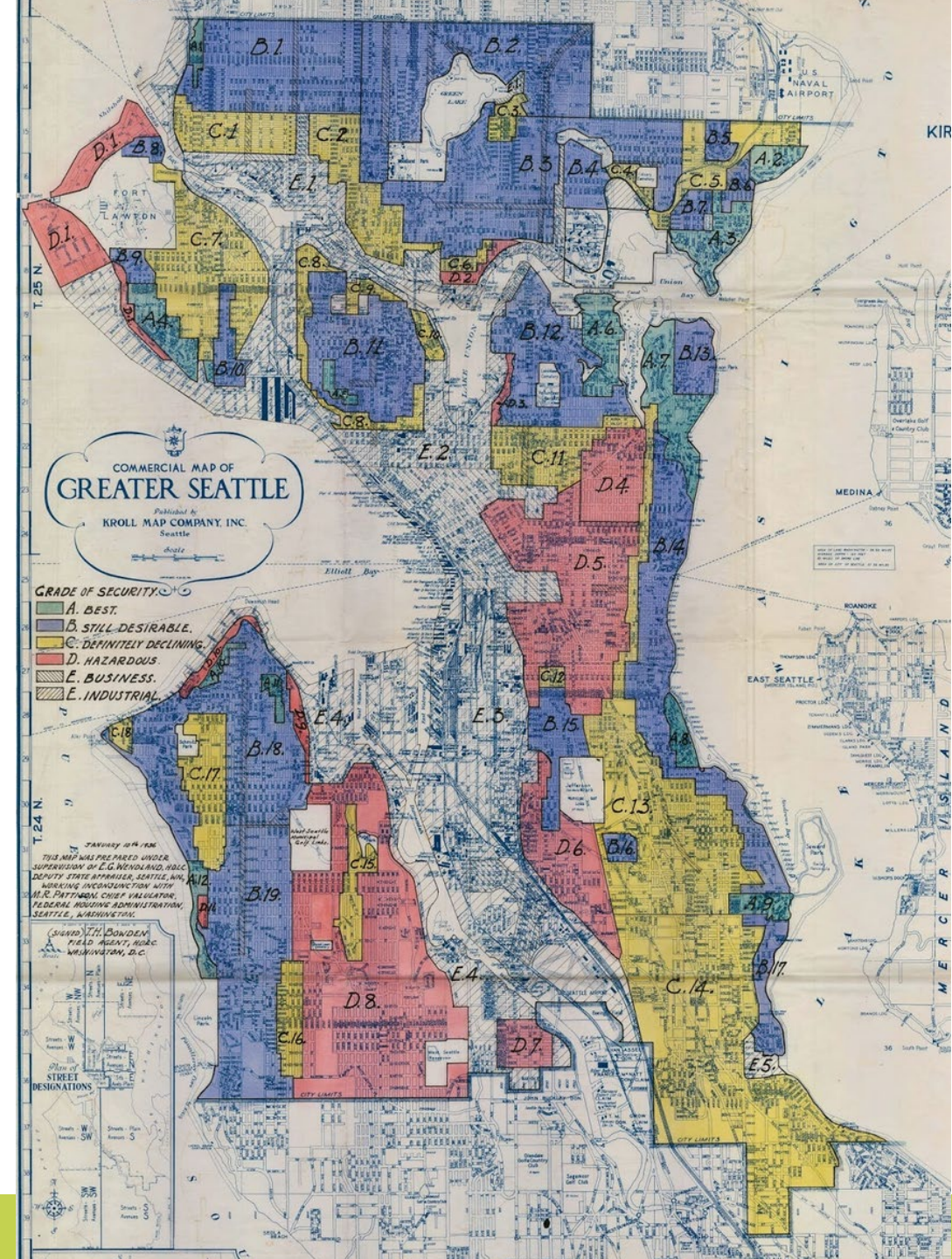
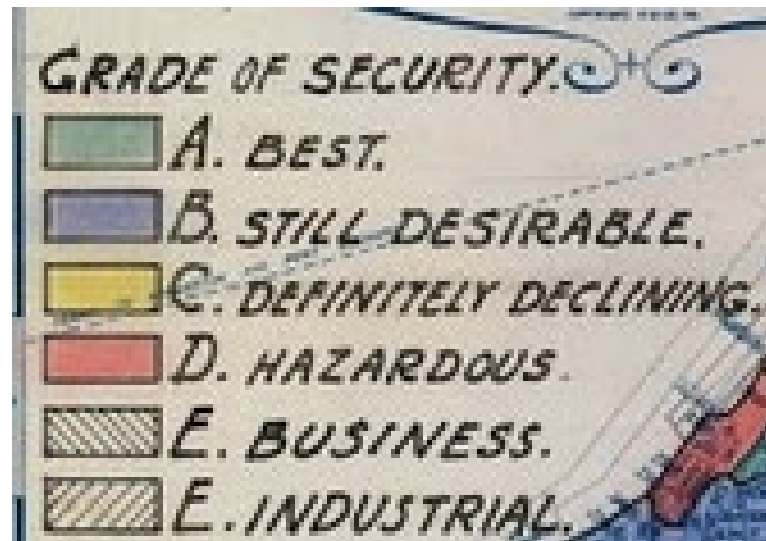
OPCD

EDI Values

- Acknowledging historic injustices
- Centering communities most impacted by displacement
- Community-driven strategies
- Accountability
- Leverage
- Flexibility and interdependence
- System change

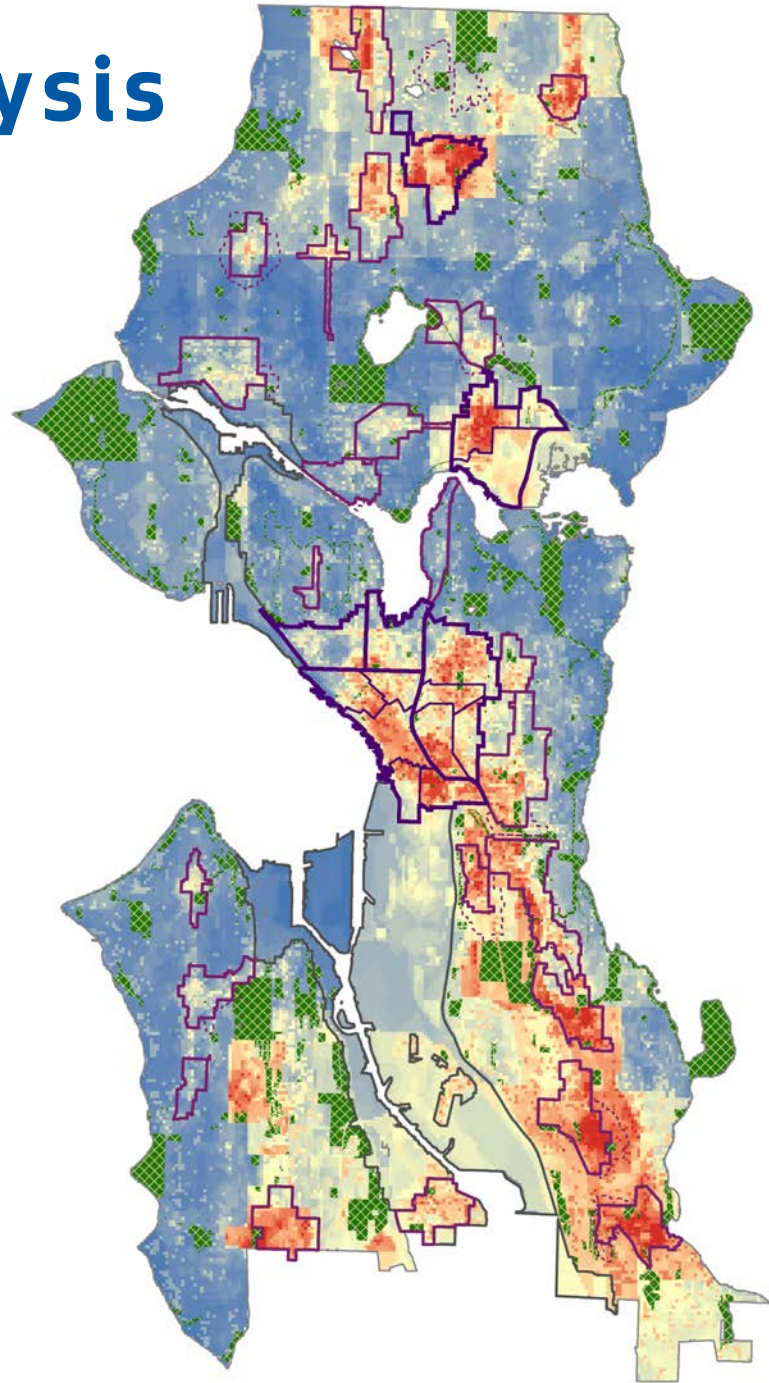
Redlining in Seattle

Investment decisions made by previous generations contributed to the inequities communities experience today.

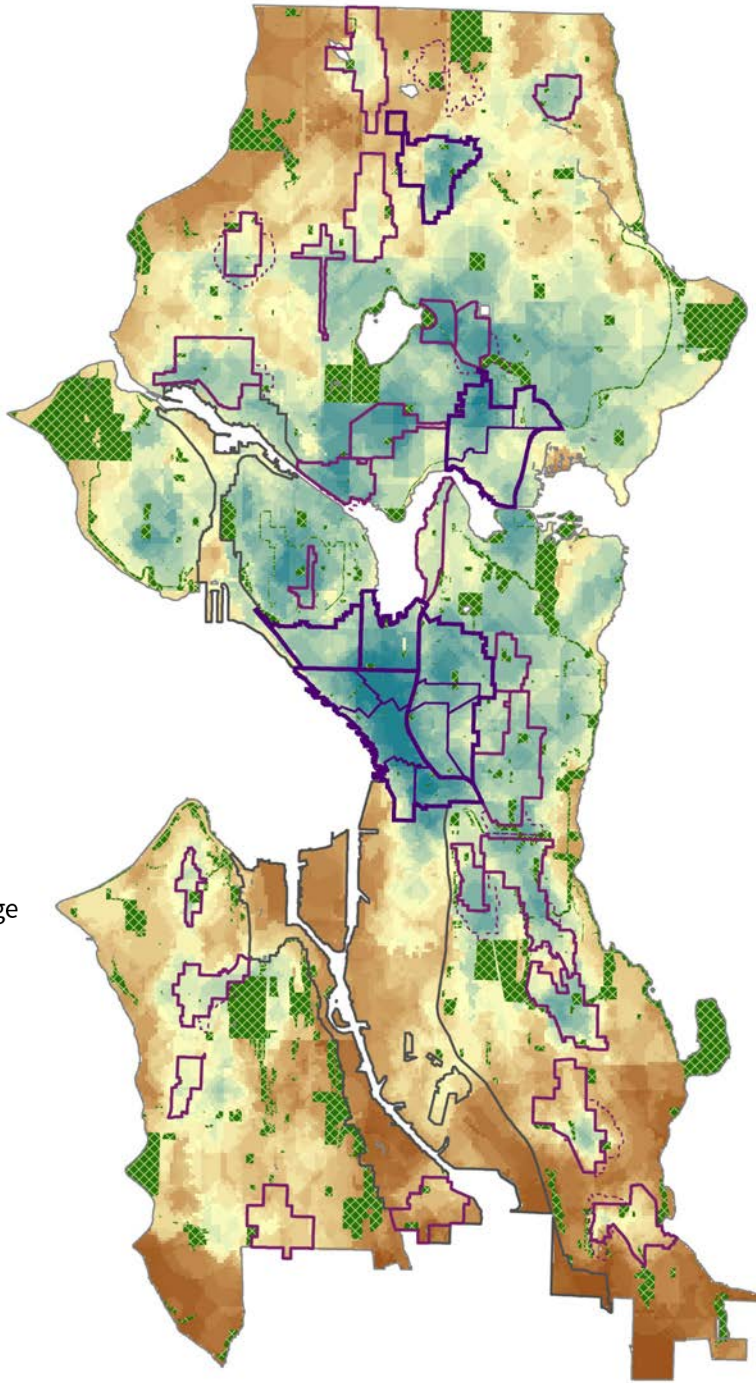


Equity Analysis

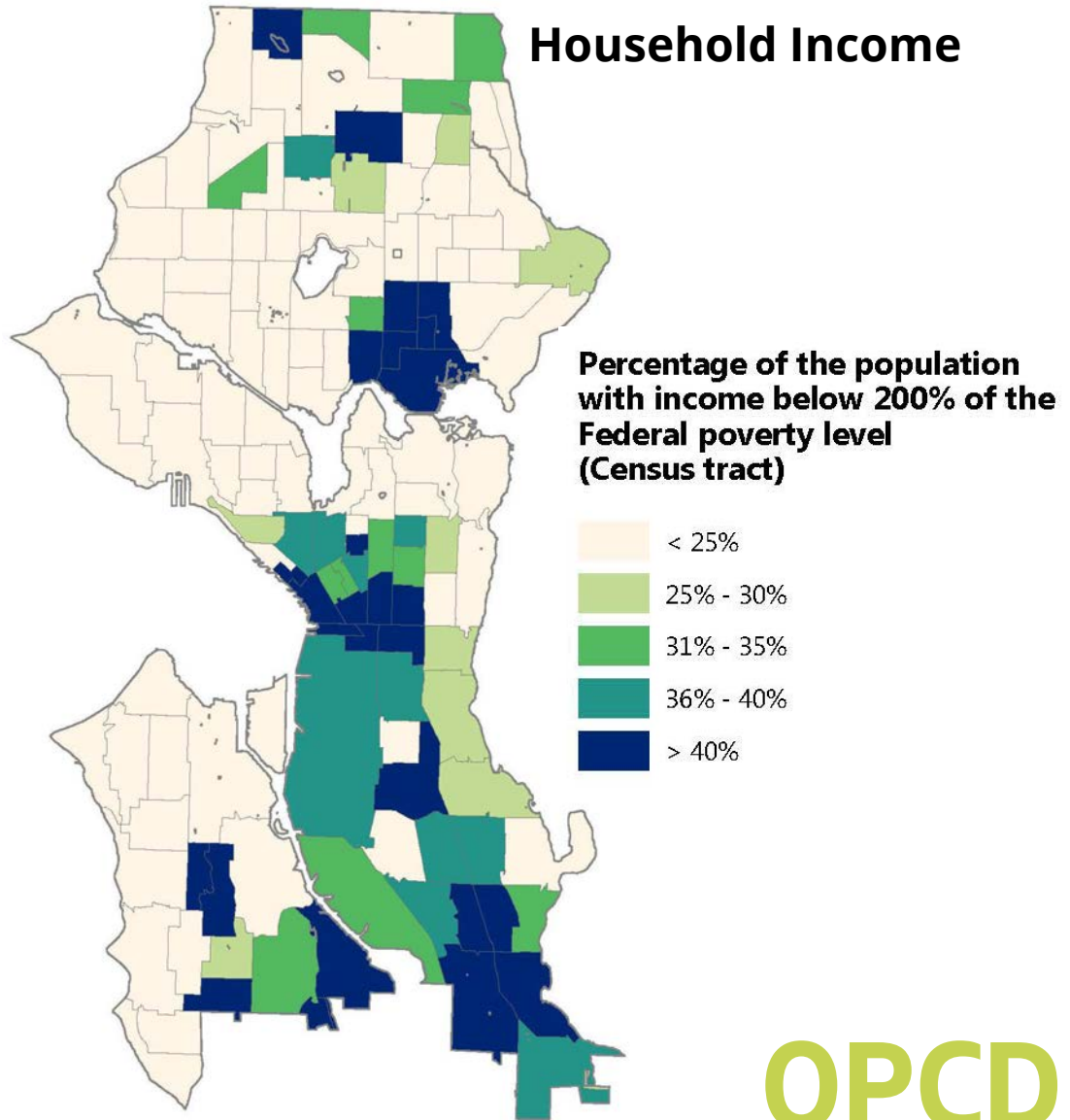
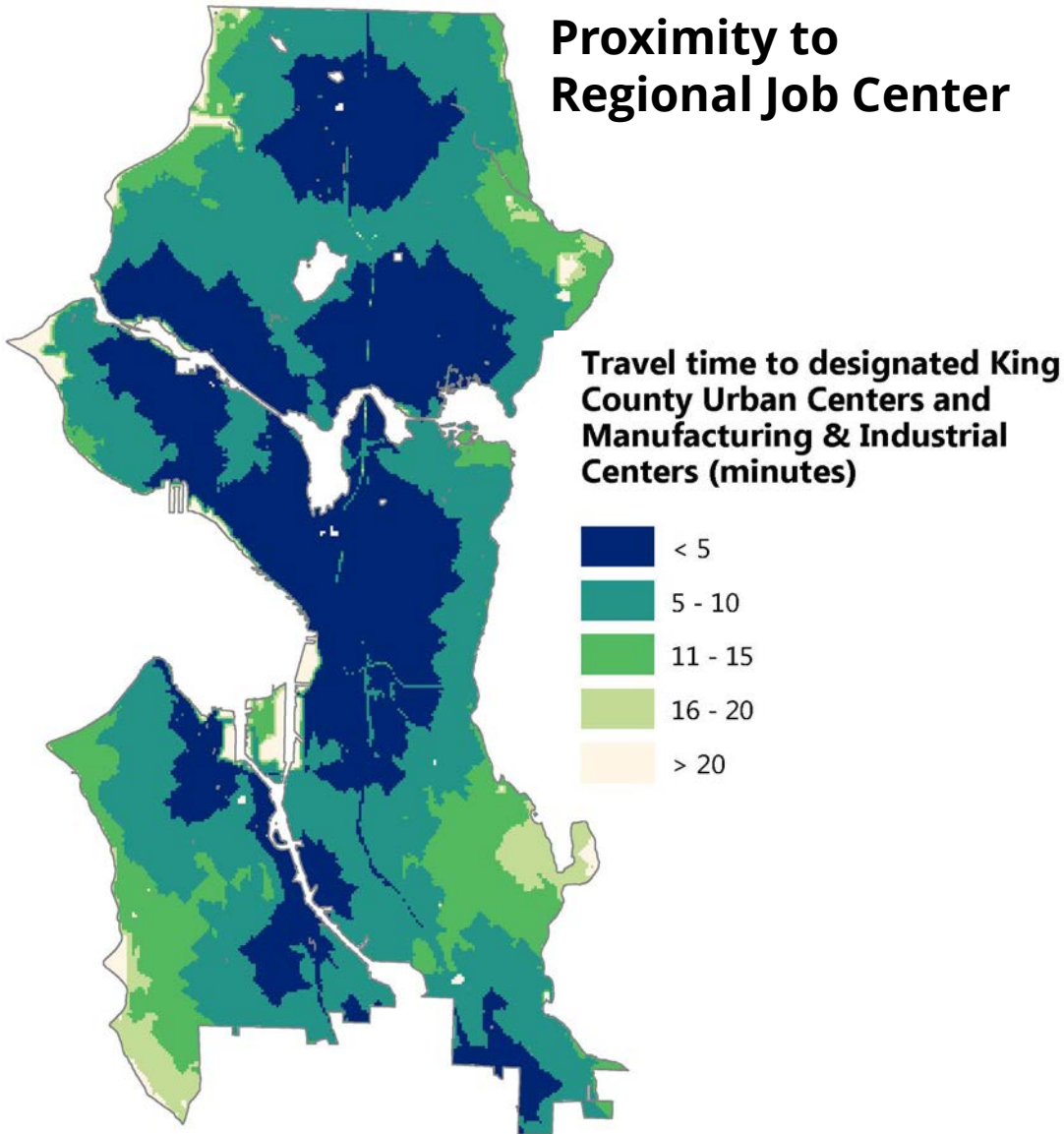
Risk of Displacement



Access to Opportunity



Examples of layers in Equity Analysis Index




Place-based Targeted Strategies

Priority Neighborhoods

- High levels of chronic / recent displacement
- History of racially driven disinvestment
- Significant populations of marginalized communities
- Community strategies created through inclusive community engagement
- Major transportation investment






Equitable Development Framework: Strong People, Strong Communities

Strategies to achieve community stability and resilience in the face of displacement, and great neighborhoods with access by all:



Equitable Development Framework: Strong People, Strong Communities

Each of our grantees brings at least three equity drivers together in one project.

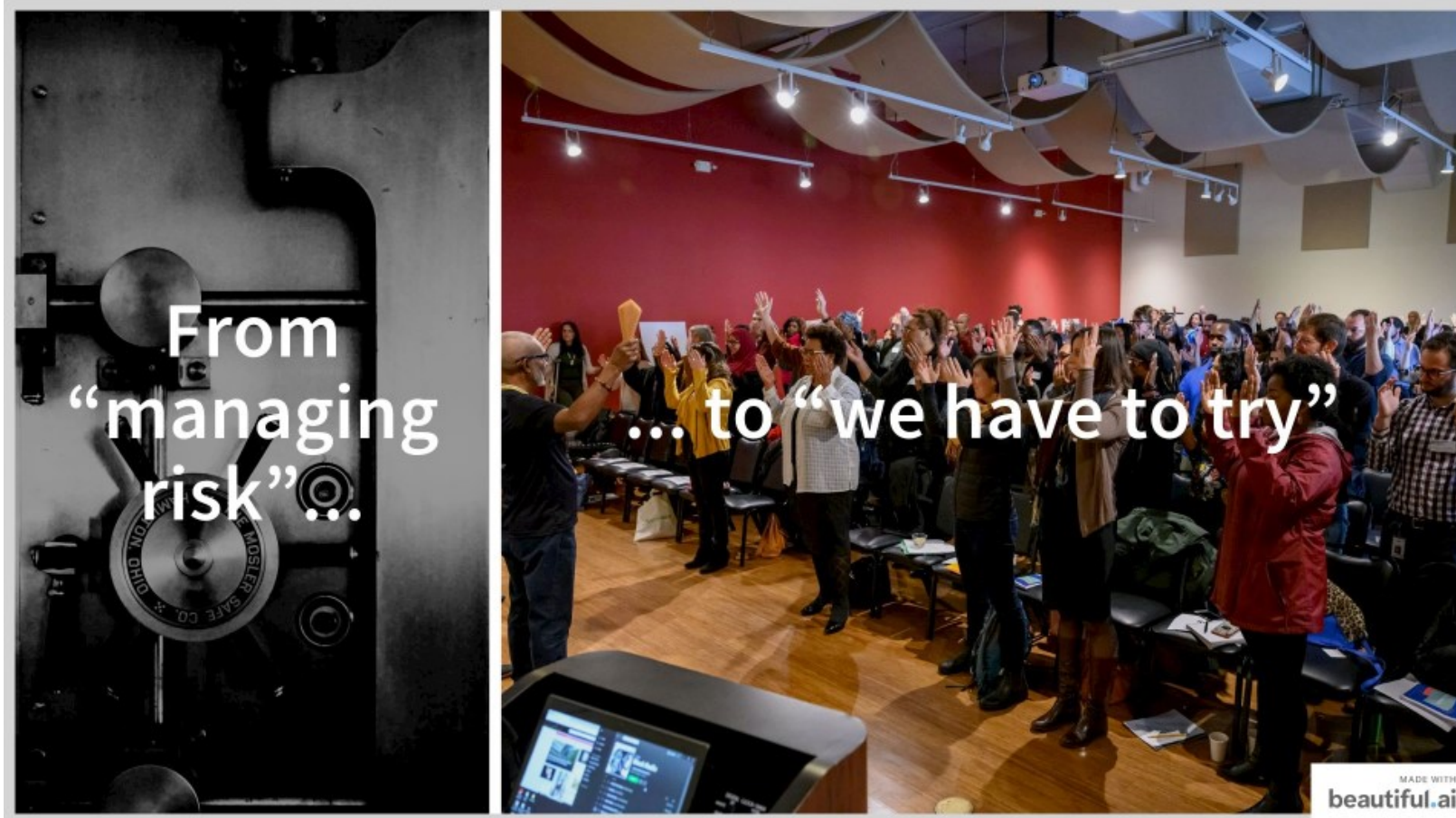
	Advance economic mobility and opportunity		Promote transportation mobility and connectivity
	Prevent residential, commercial, and cultural displacement		Develop healthy and safe neighborhoods
	Build on local cultural assets		Provide equitable access to all neighborhoods

MADE WITH
beautiful.ai

EDI Partnerships



\$5.8 Million available from Equitable Development Initiative fund



Criteria

Core Criteria

- High Risk of Displacement Community
- Depth of Relationship from Project Sponsor
- Equity Drivers

Examples of other Consideration

- Geographic distribution
- Unmet Needs
- Lays groundwork for future investments

EDI Scoring Ex. Depth of Relationship

Strong (deserves high score)	Weak (deserves low score)
Does the leadership (Board and Executives) reflect the community being served?	Is there significant disparity between the organization's staff and community?
Does the organization focus on anti-displacement or community development work?	Is this proposal a departure from the org's founding mission and purpose?
Is the proposal the result of previous community efforts?	Was the proposal developed solely in the context of the EDI funding round?
Does the total proposed budget adequately resource all collaborative partners?	Does the collaboration rely on the unreimbursed work of partner organizations?
Does the organization demonstrate clear reasoning as to why they are leading the work?	Are there other organization in the area that would potentially do a better job as the project sponsor?

EDI Scoring Equity Drivers

STRONG (deserves high score)	WEAK (deserves low score)
Does the proposal show a clear connection between the project and Equity Drivers from the EDI Implementation Plan?	Does the proposal have a limited logical connection to EDI Implementation Plan?
Does the proposal describe measurable outcomes that it aims to influence to advance EDI drivers?	Does the proposal lack a vision for how effectiveness would be viewed?
Is the proposal at a sufficient scale to be able to address the community need?	Does the proposal not have a way to scale to the point where there would be significant benefit to the community?
Does the project represent a substantial effort to address three Equity Drivers equally?	Is the project mostly about one Equity Driver with others thrown in to comply with the application rules?
Do the proposed Equity Drivers clearly align with needs in the community?	Are the proposed Equity Drivers driven primarily by an organization's existing programs?

Funding Available - 2020 RFP

FUNDING

- \$16M from Civic Square sale (2017-2018)
- \$430,000 CDBG annually through 2020
- \$5M annually from Short-Term Rental Tax (starting 2019)
- \$15M from sale of Mercer Mega Block (\$5.2M in 2020 and \$9.8M in 2021)

WHY

Providing immediate resources to reflect the critical needs affecting communities in 2020 both related to Covid, the economic downturn, and structural racism.

HOW

- Direct Community Support
- Capacity-Building/Leadership
- Planning and Strategy

Funding will be allocated to both existing EDI projects as well as new organizations within the following allocations:

Existing Organizations- \$3.665M

New Partnerships -\$1.75M

OSE's EJC Partnership- \$250K
Seattle Together Partnership - \$225k

New organizations can apply for awards from one or all of the funding priorities. Each award is up to \$50,000. The priority areas are:

BIPOC Social Infrastructure

Economic Recovery and Disaster Gentrification

COVID 19 Community response and recovery

Timeline

Action	Timeline
RFP Release	8/31/2020
Outreach Webinars	9/2, 9/8, 9/10, 9/17
RFP Close/ Applications due	9/23/2020
Review Committee Meets	10/7 through the 10/19
Final Decisions	Week of 11/20
Contracting Process	November - December
Contract Period	January 2021 - December 2021

Questions?

