

# PROJECT NARRATIVE

# 1 BED DADU

## CONTACT

Morgan Law, Architect  
morganmlaw@gmail.com  
cell: 541-729-3675

## STATUS

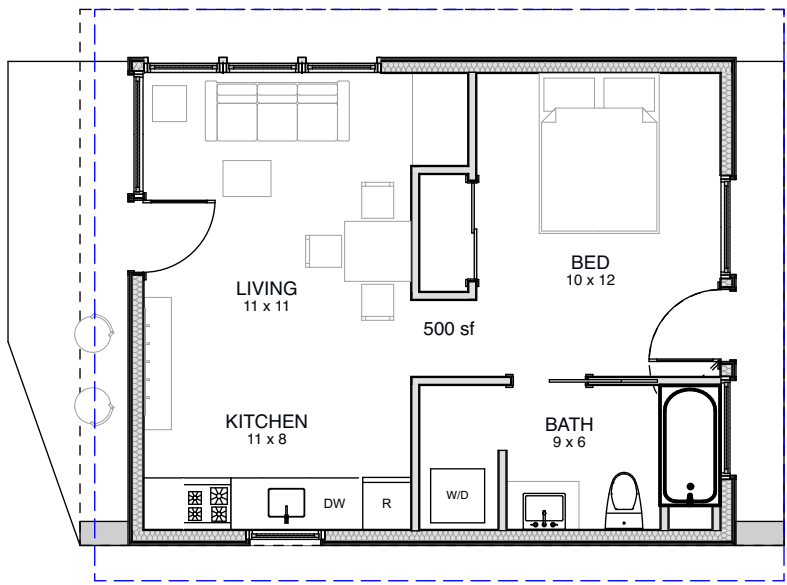
Completed 2017

## STATS

500 SF DADU

## LOCATION

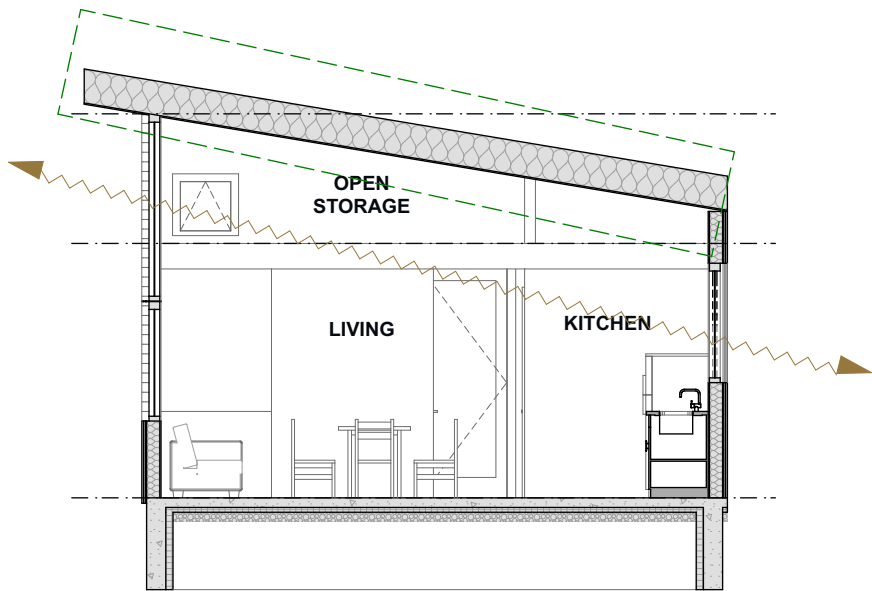
Portland, OR



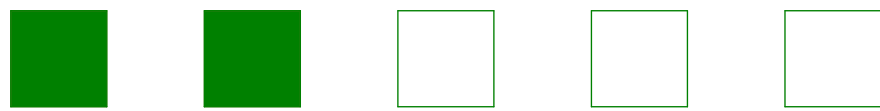
## LOW COST



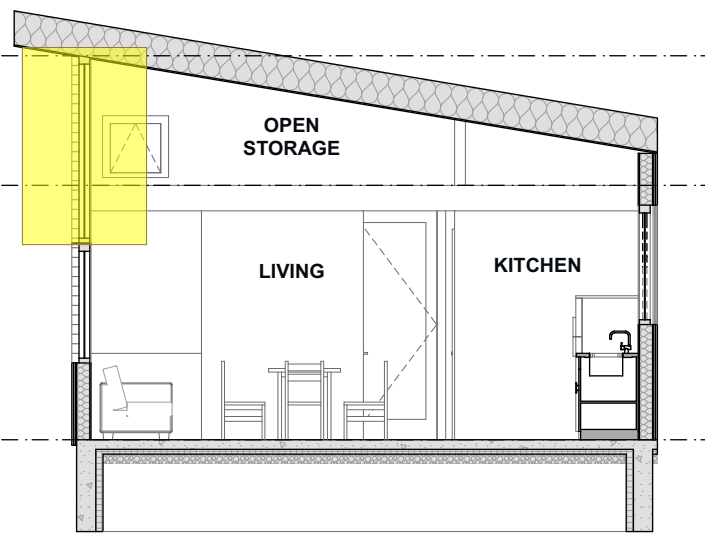
- simple geometric form
- prefabricated truss roof
- small spans no internal bearing simple
- small footprint, open plan



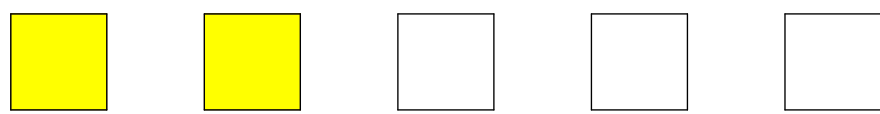
## GREEN BUILDING & DESIGN



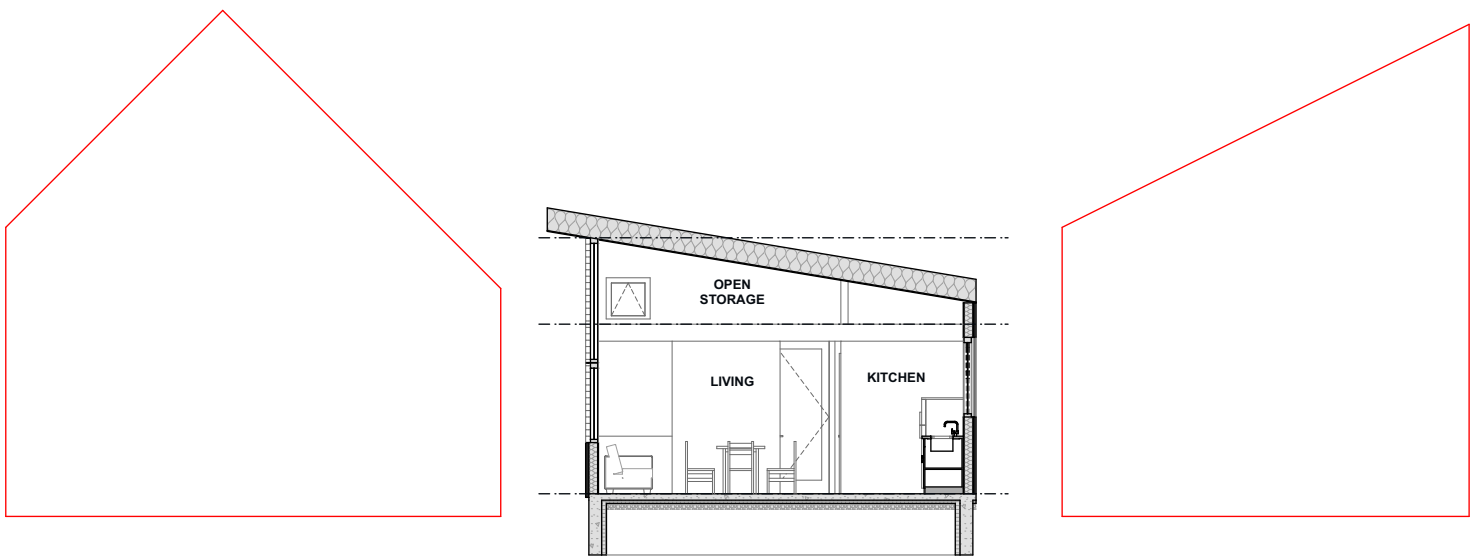
- High Efficiency windows
- High Efficiency heat pump
- Super insulated roof (R-60)
- Passive Cooling



## PRIVACY



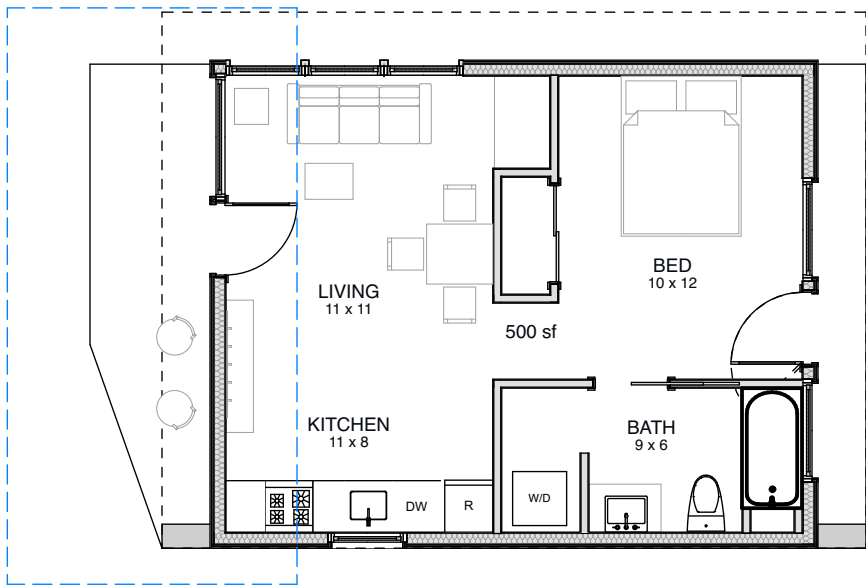
- Large upper windows can be left uncovered and maintain complete visual privacy



## CONTEXT



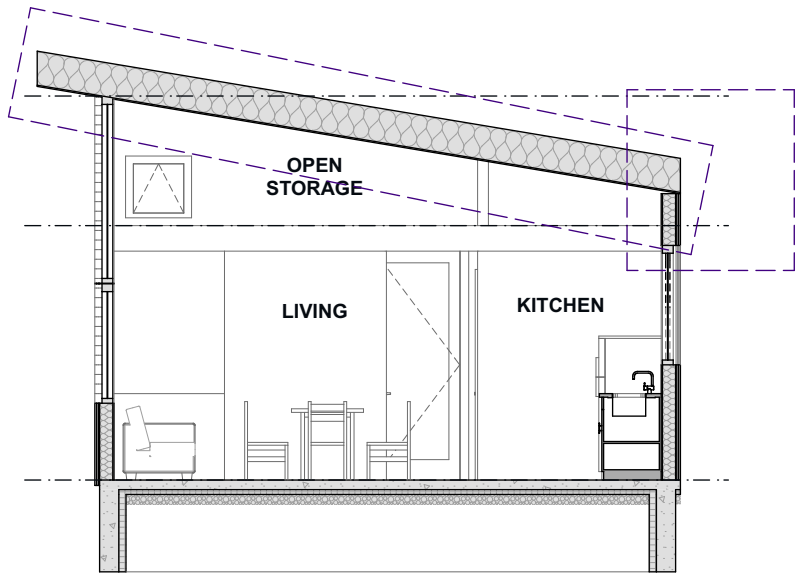
- Small scale of DADU adapts more readily to a wide range of neighborhoods



## CULTURALLY RESPONSIVE DESIGN



- Porch provides an additional family room / way to interact with neighbors.



## CONSTRUCTIBILITY



- Clear span 2nd floor and roof allows for quick framing construction
- Provides low hanging fruit cost savings for owner: painting, assemble kitchen cabinets, bathroom tile
- Shed roof allows for 1 gutter / downspout

## PROJECT DESCRIPTION

This DADU is a 1 bed unit with sleeping space on the ground floor, including a full bath, kitchen and living space. The upper level contains an open storage loft and small mechanical space

This DADU was designed and constructed for a couple who wanted to house an aging parent. It sits on a corner lot so it enjoys street frontage like a typical single family home in the neighborhood. The large north facing windows allow an abundance of natural light and makes the space feel much bigger. The cathedral ceiling also makes the space feel grand but also cozy.

## PROJECT COST

This project was completed for approximately \$125,000\*  
\*The homeowner acted as GC, which reduced the cost by 10-15%.

## PROJECT MATERIALS

Perimeter Concrete footing, slab on grade  
Wood framing, Low embodied energy Cellulose Insul. in walls and roof  
Fiber Cement siding  
Standing seam metal roof

## PROJECT MECHANICALS

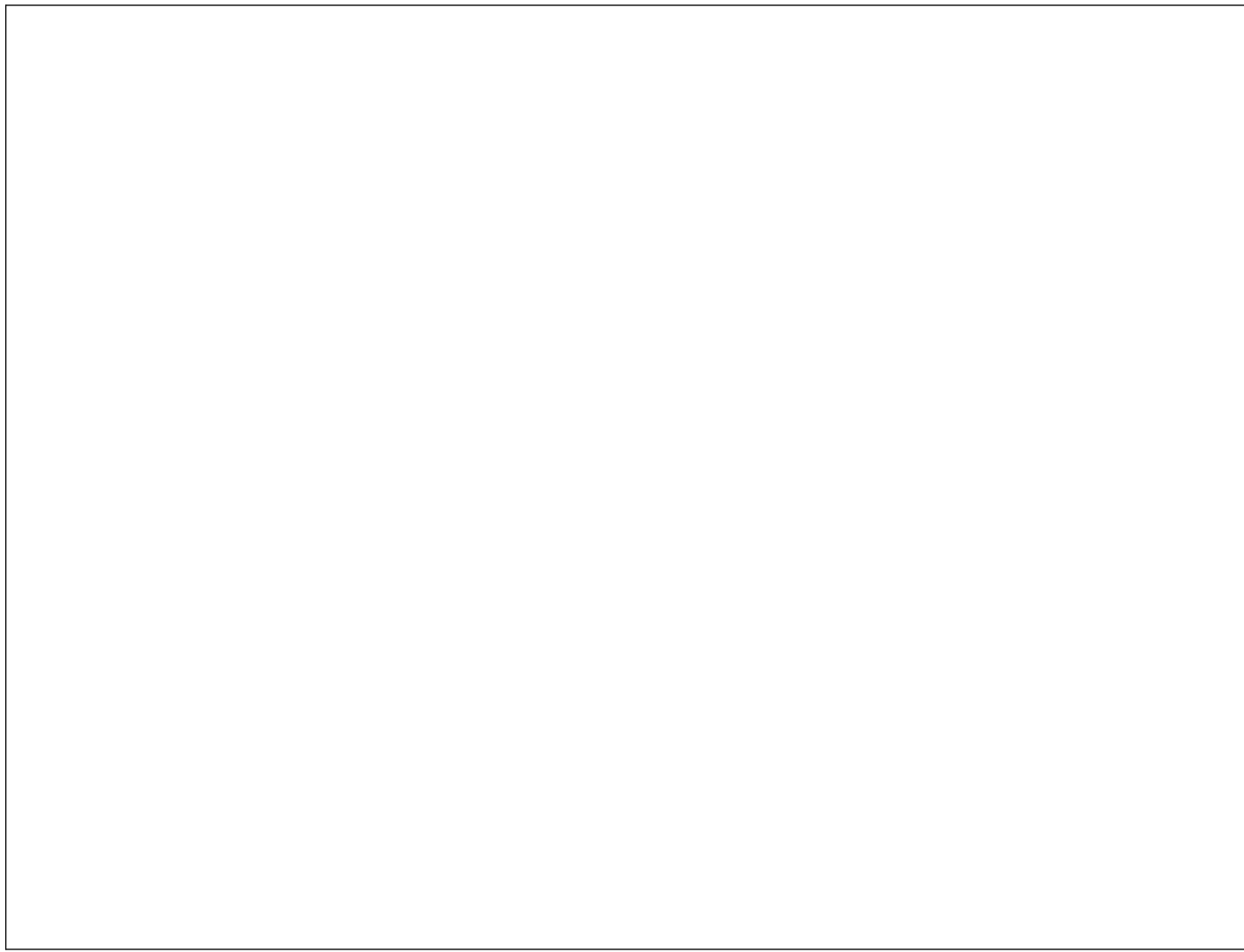
Ducted High Efficinecy Heat Pump  
Tankless (gas) HWH

## COST SAVING STRATEGIES

Omit upper storage loft  
Omit 2nd door in bedroom  
Non-custom cabinets

## INDEX

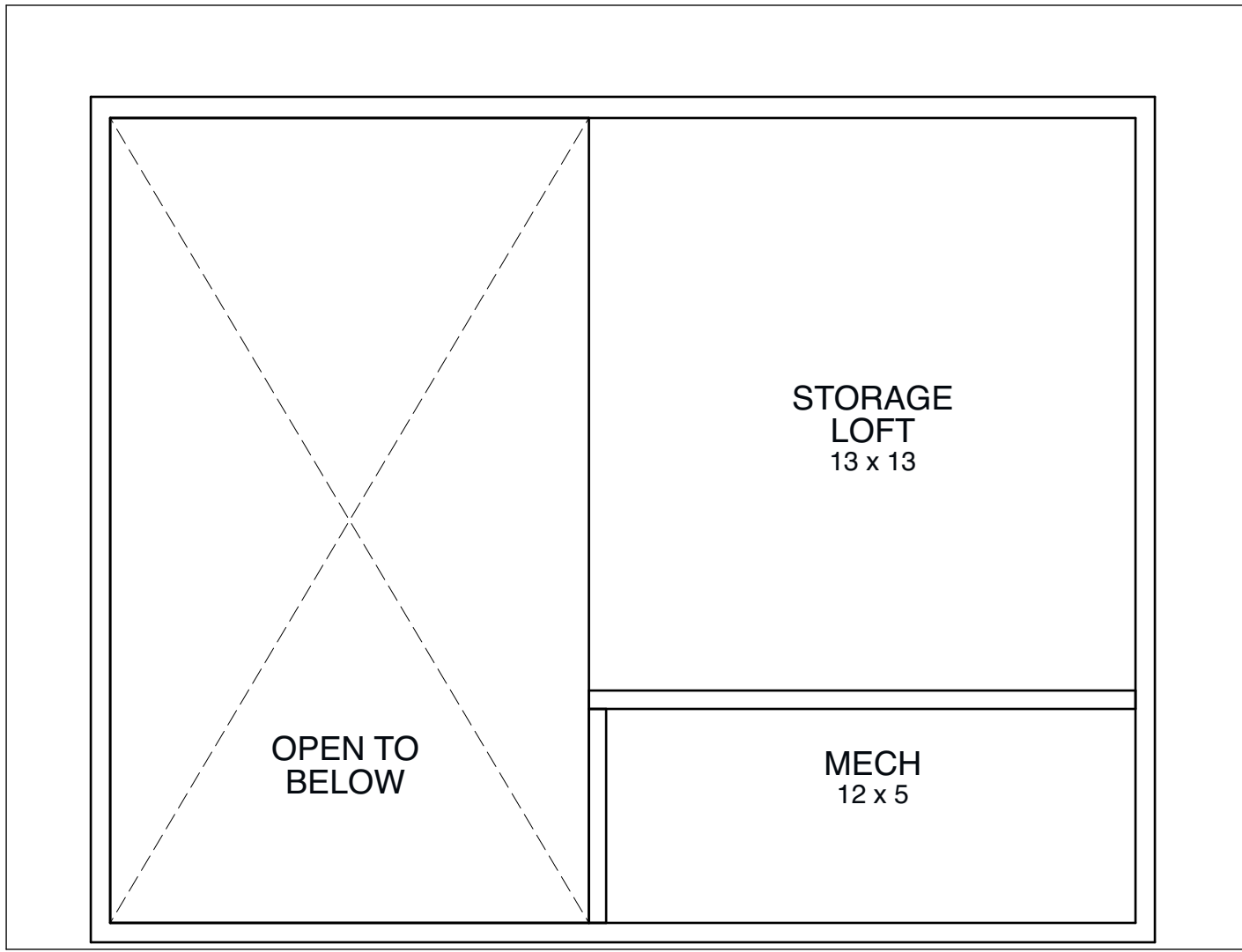
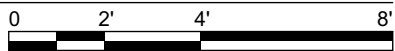
A101 - COVER SHEET  
A102 - PLANS  
A201 - ELEVATIONS  
A301 - SECTIONS  
A501 - 3D IMAGES



4  
A102

ROOF

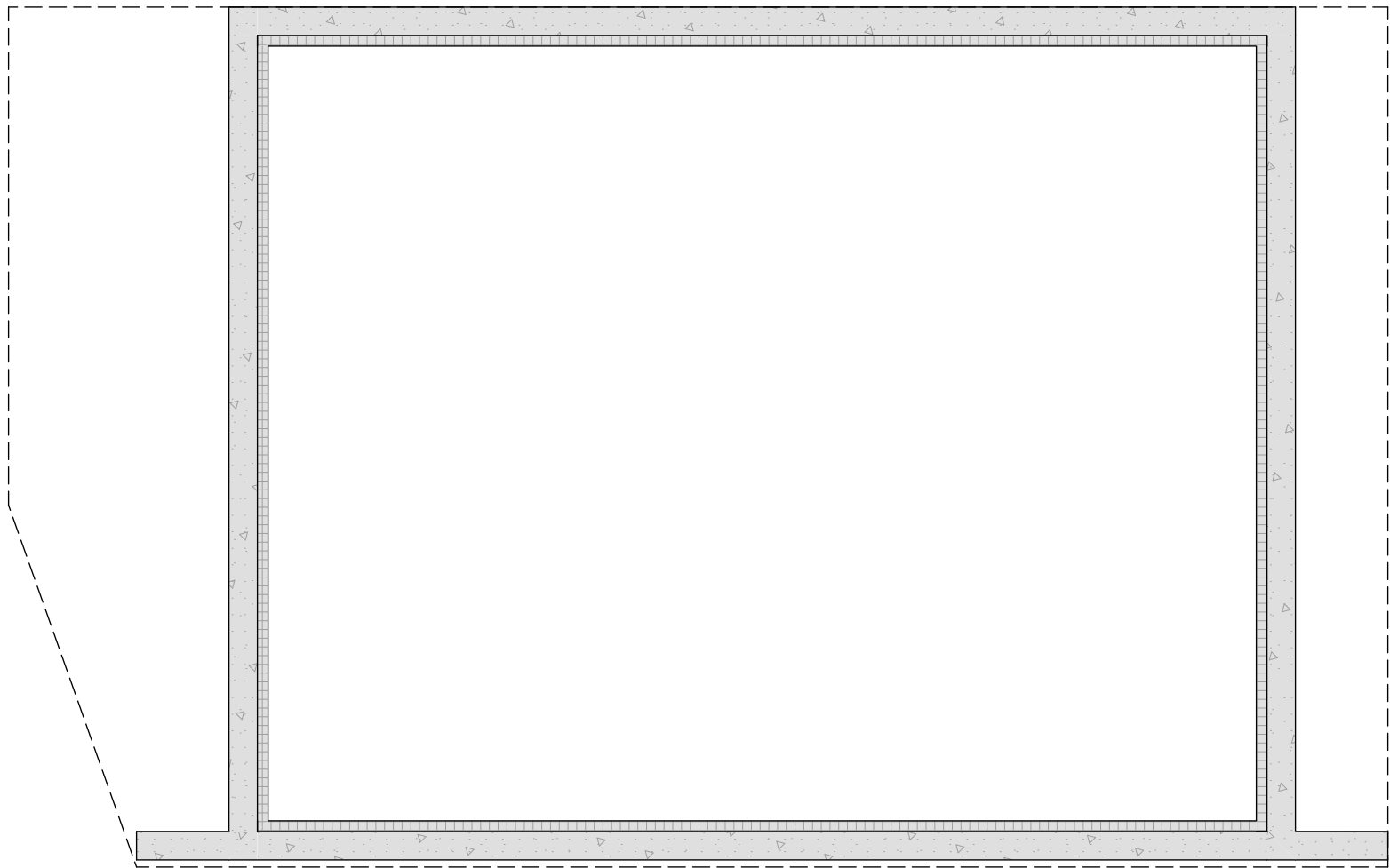
SCALE: 1/4" = 1'-0"



2  
A102

UPPER LEVEL

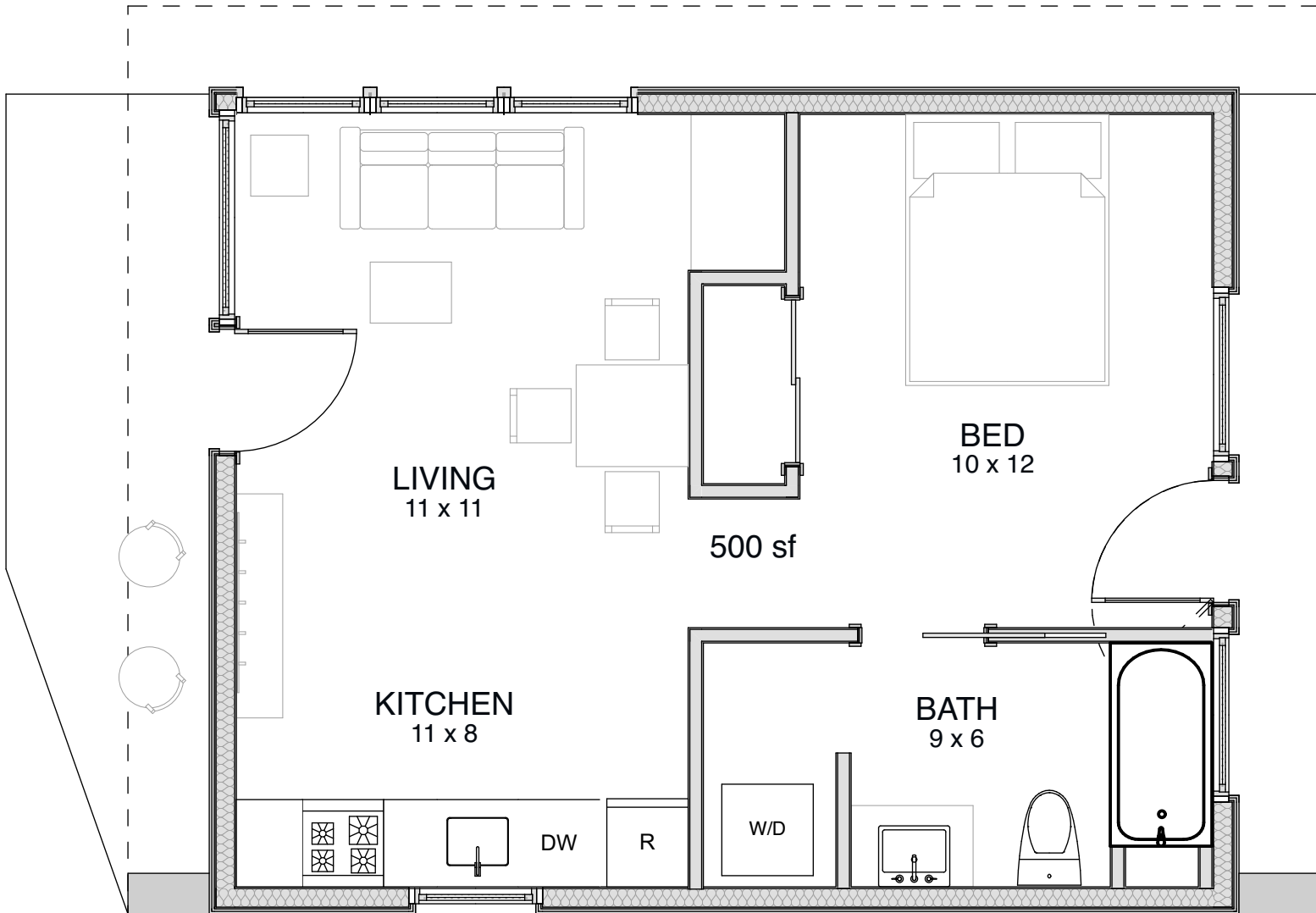
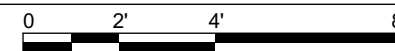
SCALE: 1/4" = 1'-0"



3  
A102

FOUNDATION

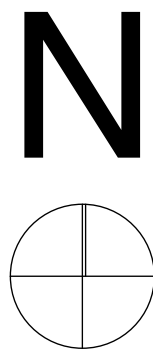
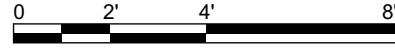
SCALE: 1/4" = 1'-0"



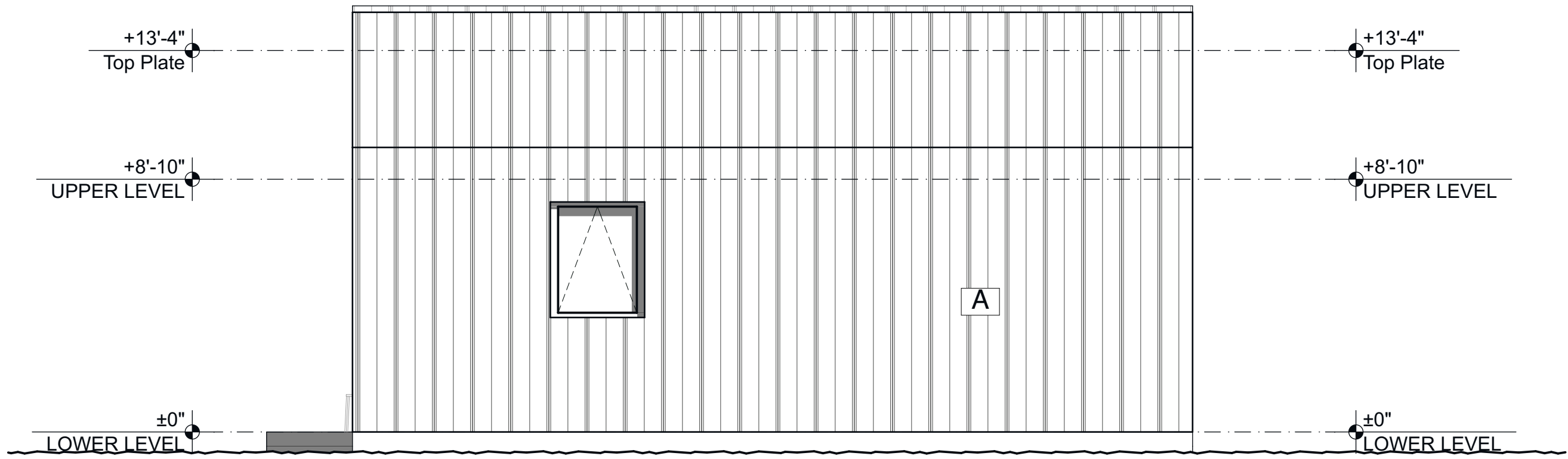
1  
A102

LOWER LEVEL

SCALE: 1/4" = 1'-0"

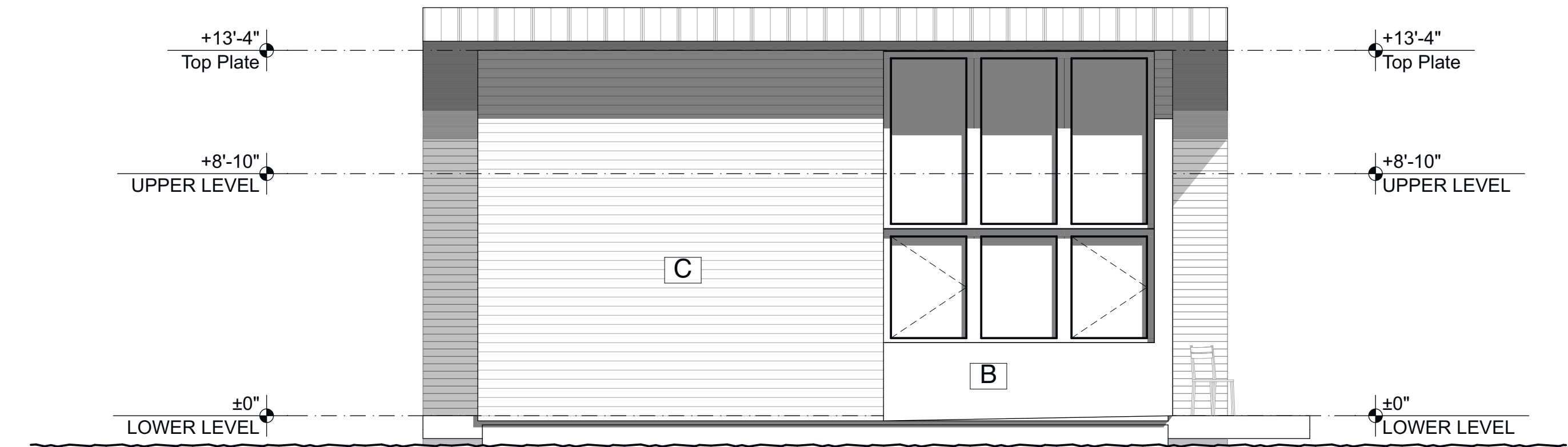
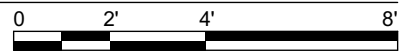






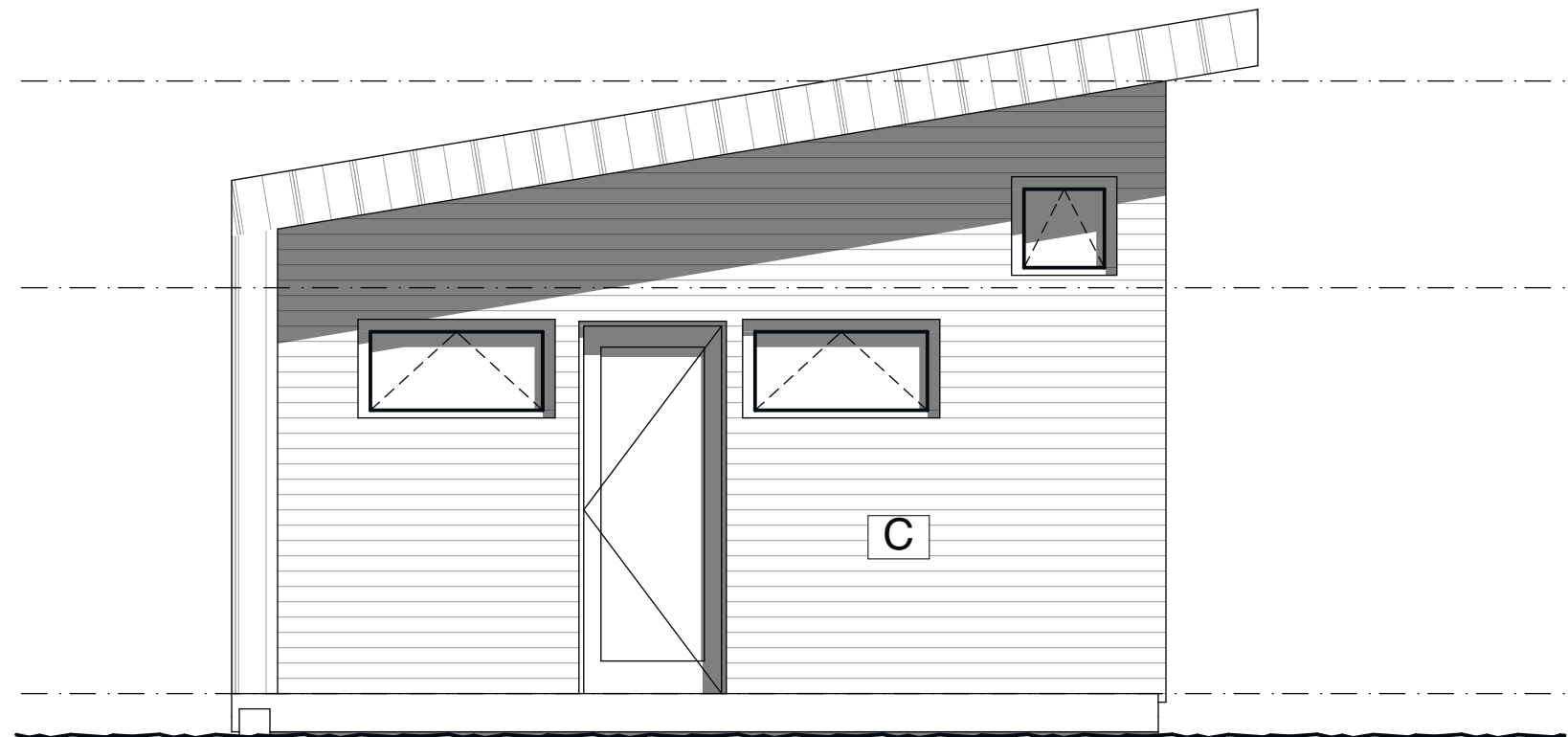
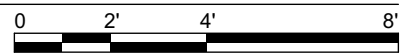
4 South Elevation  
A201

SCALE: 1/4" = 1'-0"



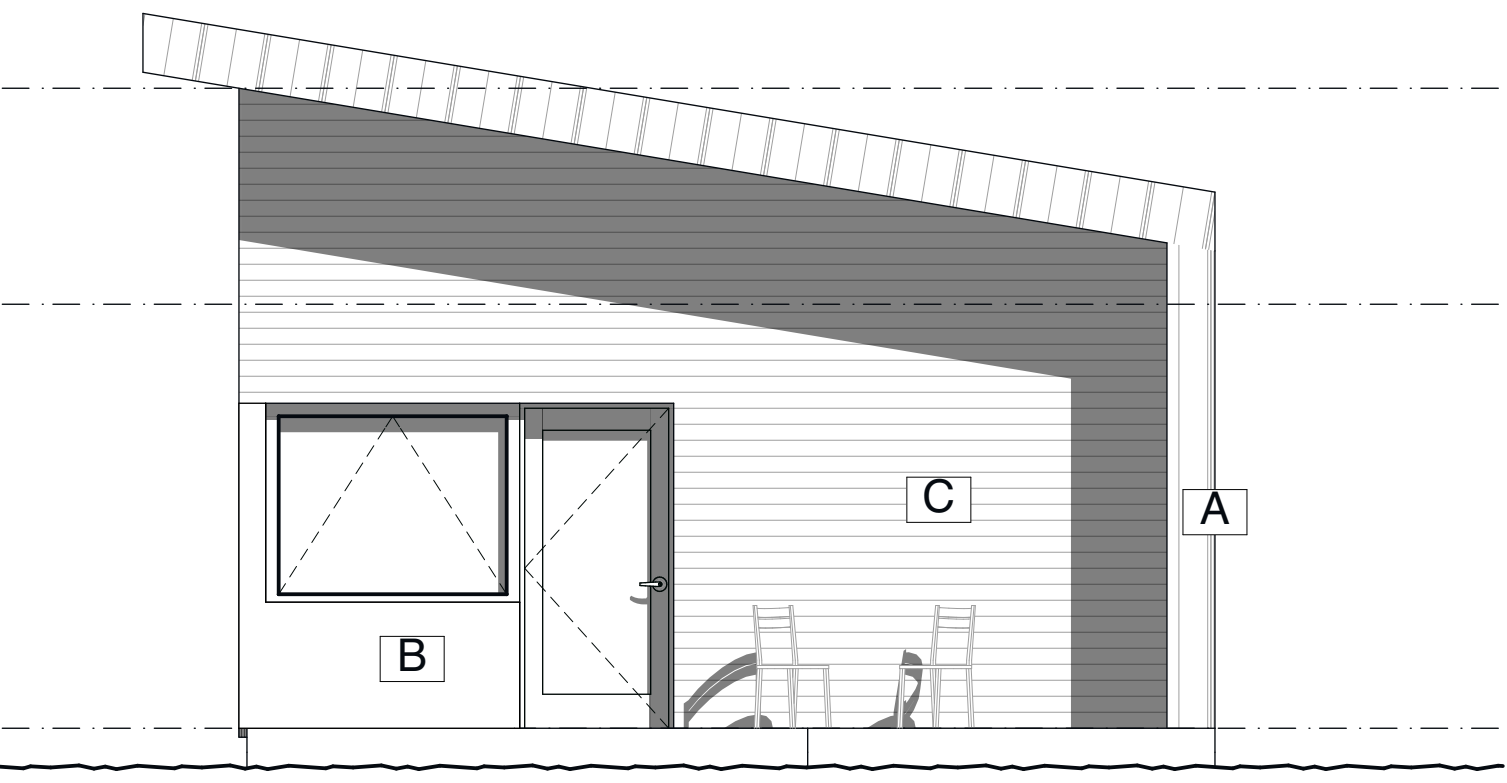
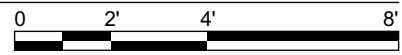
3 North Elevation  
A201

SCALE: 1/4" = 1'-0"



1 East Elevation  
A201

SCALE: 1/4" = 1'-0"



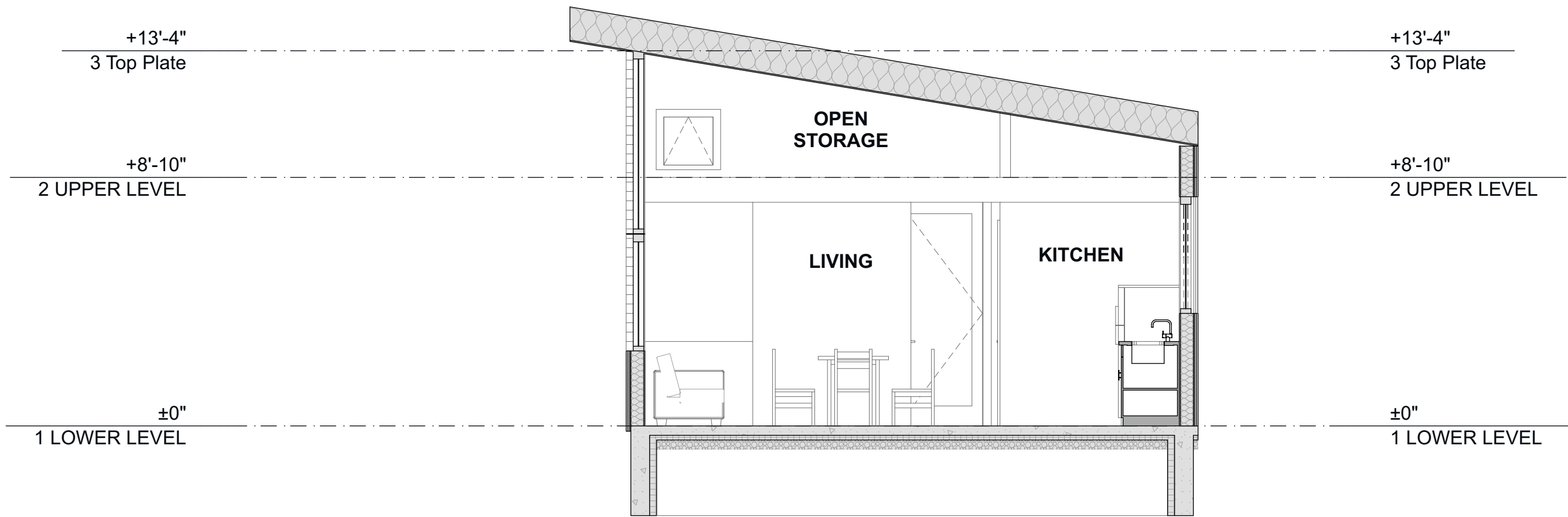
2 West Elevation  
A201

SCALE: 1/4" = 1'-0"



**MATERIALS**

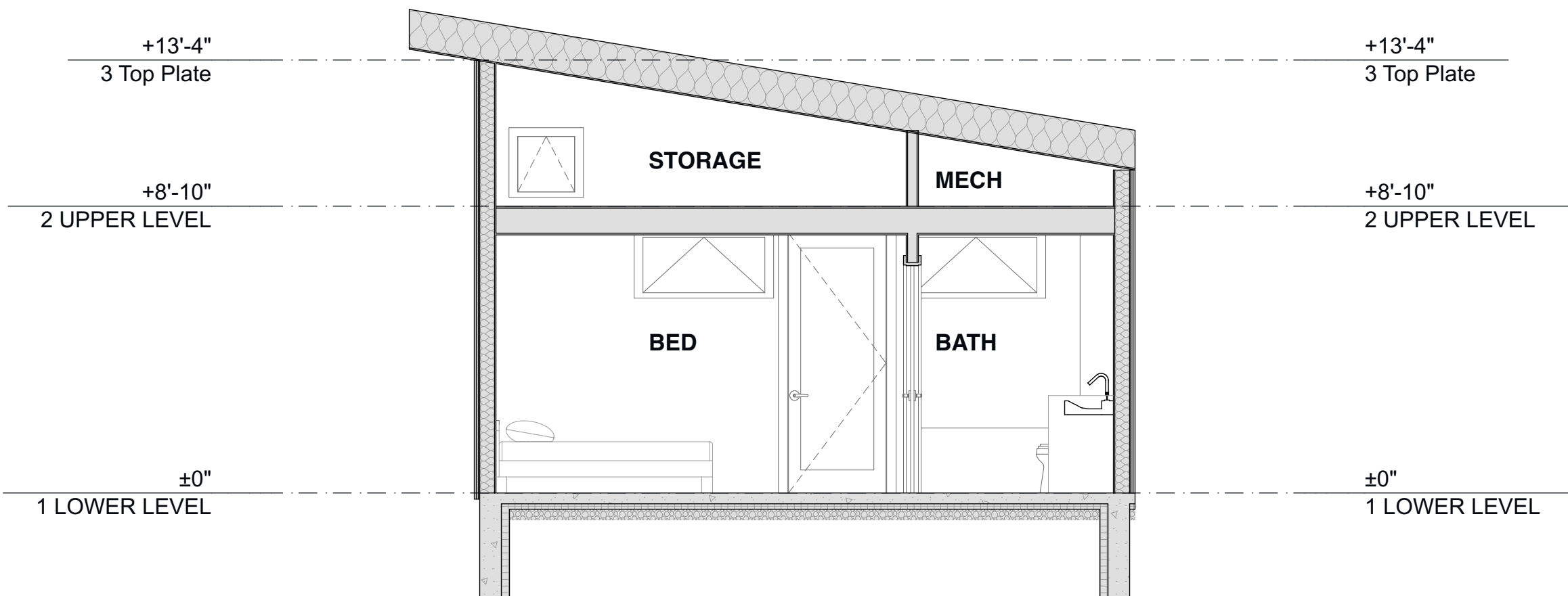
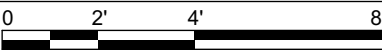
- A. STANDING SEAM METAL ROOF
- B. FIBER CEMENT PANEL
- C. FIBER CEMENT CLAPBAORDS



1  
A301

Section at Living Looking South

SCALE: 1/4" = 1'-0"



2  
A301

Section Looking South

SCALE: 1/4" = 1'-0"





