



"Granny, are you home?"

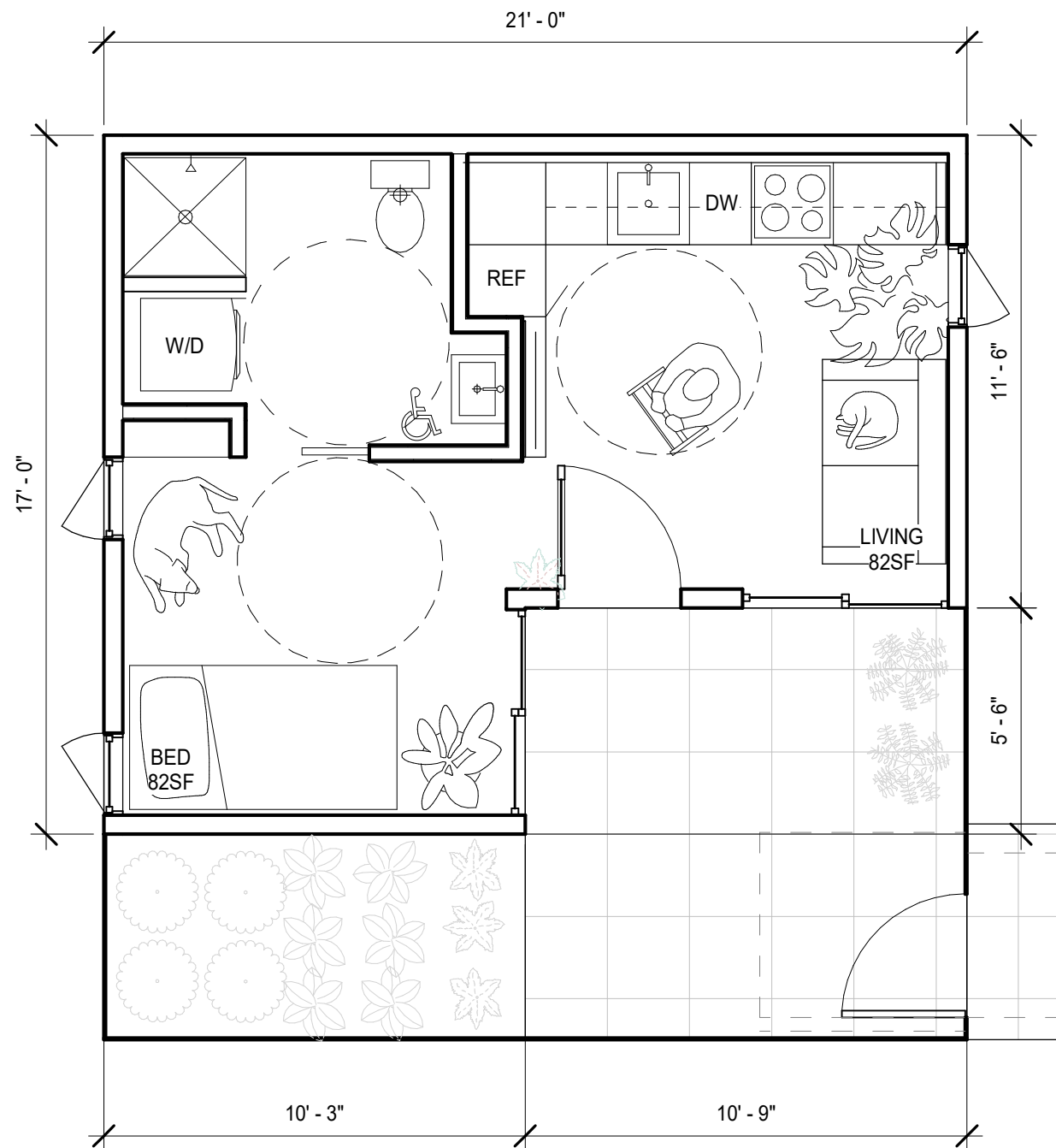
COURTYARD HOUSE

YES Architecture		-	PERSPECTIVE	A
------------------	--	---	-------------	---



"Is it time for the farmers market?"

COURTYARD HOUSE



1 | PLAN
1/4" = 1'-0"

Courtyard houses are common international housing typology but rarely found in tiny house dimensions. The inward-focused form of a courtyard provides opportunities for highly glazed interior spaces while maintaining privacy from the surrounding alleyways or backyards. This is a one story, small footprint apartment is an accessible unit.

DADU Categories::

- Small Footprint
- Accessible
- Low-Cost

List of mechanical systems:

- mini split
- electric hot water heater
- kitchen exhaust fan
- whole house fan
- bathroom exhaust fan
- dryer exhaust

Estimated cost of construction:

Approximately \$150,000 at market rate pricing

Price for the drawing set: \$1000

Rate for further work: \$100/hr

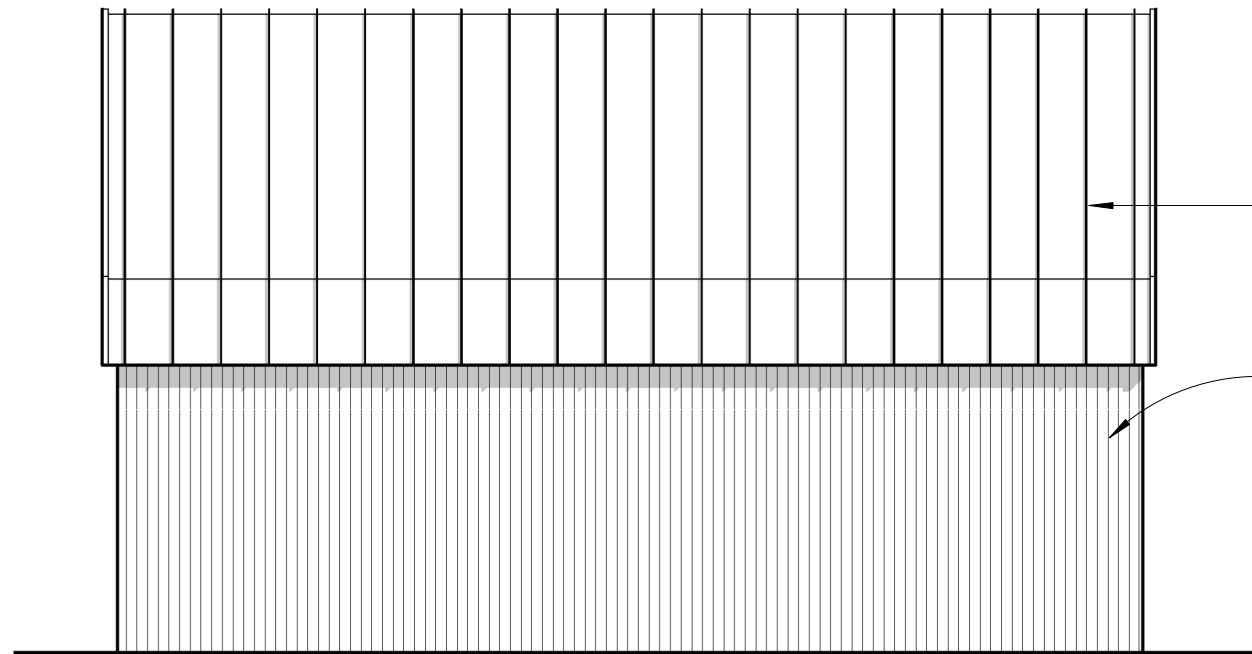


This compact, 1-bedroom, 1-bath home is laid out on a single floor as a fully-**accessible** unit. High-gabled ceilings, clerestory skylights, and walls of glass make the living floor feel more generous. The inward-focused form of a courtyard provides opportunities for highly glazed interior spaces while maintaining **privacy** from the surrounding alleyways or backyards.

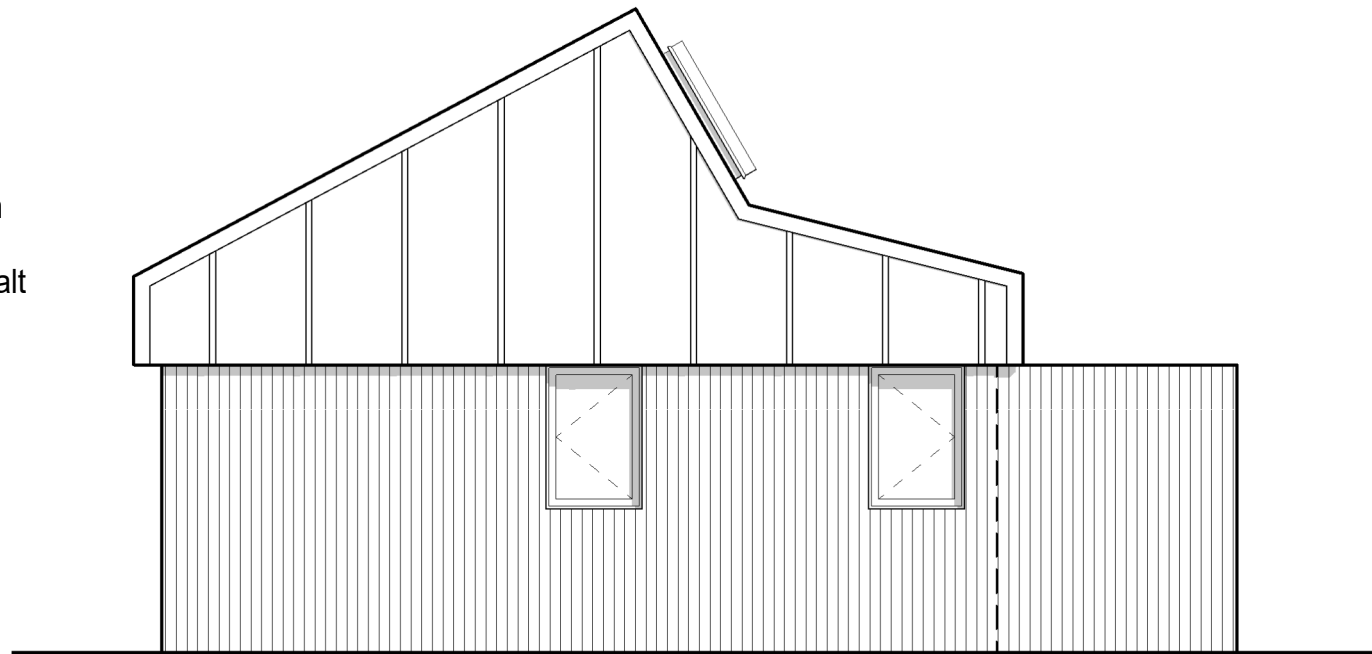
The iconic gable form is simultaneously traditional and modern. Whether clad in cedar shake, fiber cement lap, or corrugated metal, the simple form allows the DADU to adapt to any number of neighborhood **context** or styles.

To promote passive **green building** techniques, the pitched roof is the optimal angle for fixed, year around solar panels. Interior climate is controlled whenever possible with operable windows. Elevated windows and skylights allow summer heat to escape and create an upward stack-effect. Skylights reduce reliance on interior lighting. A high efficiency mini-split supplements passive techniques.

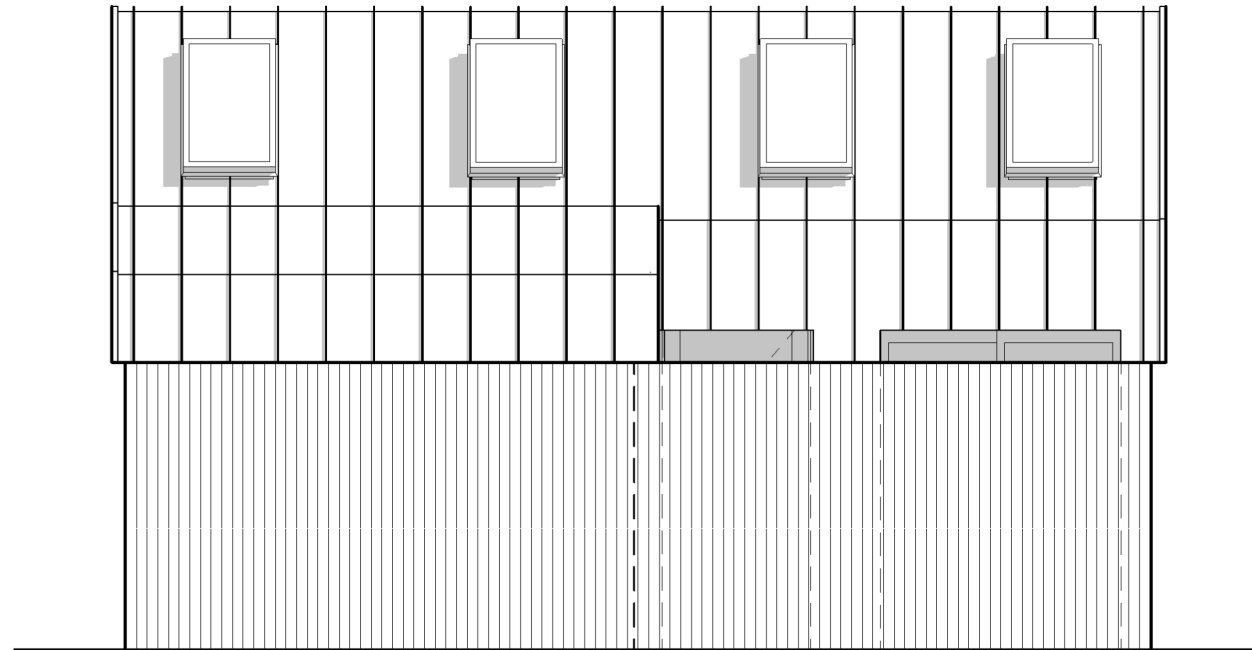
The house is designed to **lower costs** through small footprint, standard construction techniques and standard parts. The small, 300sf footprint, will limit costly ground and foundation work. The house is designed to be constructed using standard wood framing and siding practices. Window sizes were selected to match off-the-shelf window products from the local hardware stores to reduce custom parts.



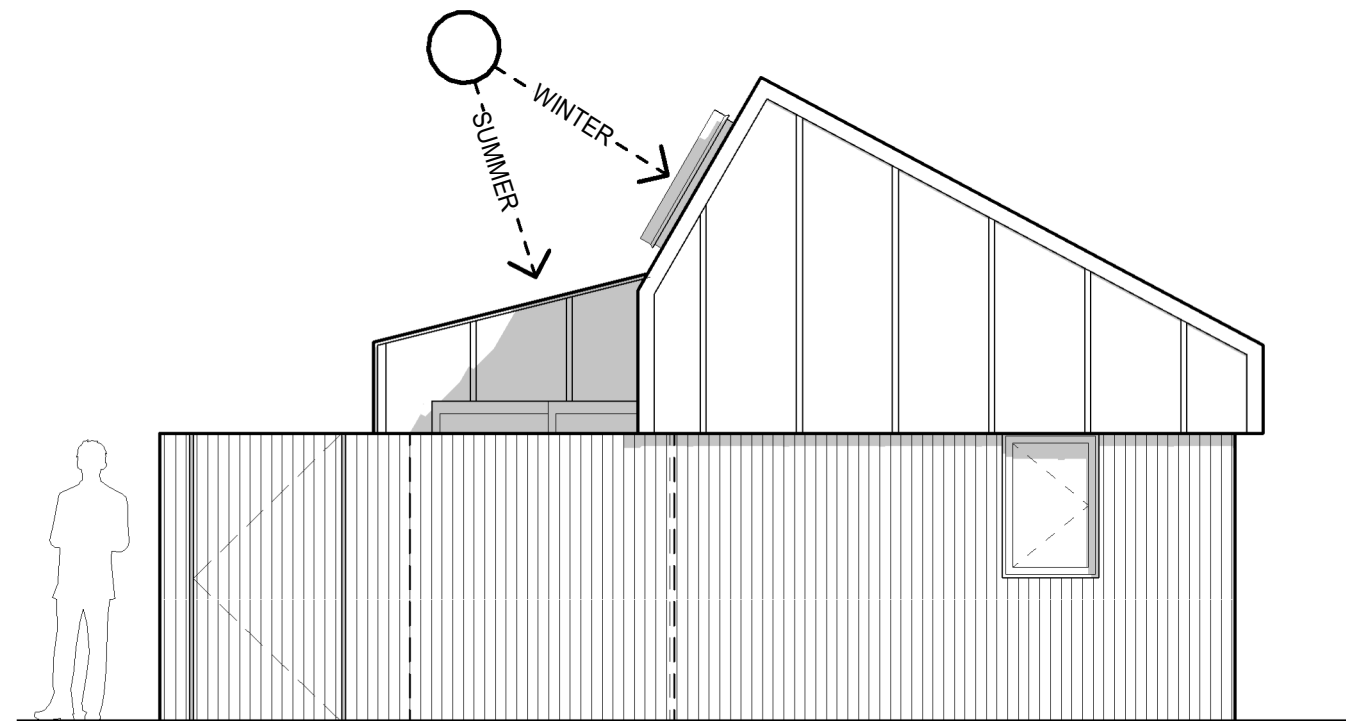
1 | LEFT ELEVATION
1/4" = 1'-0"



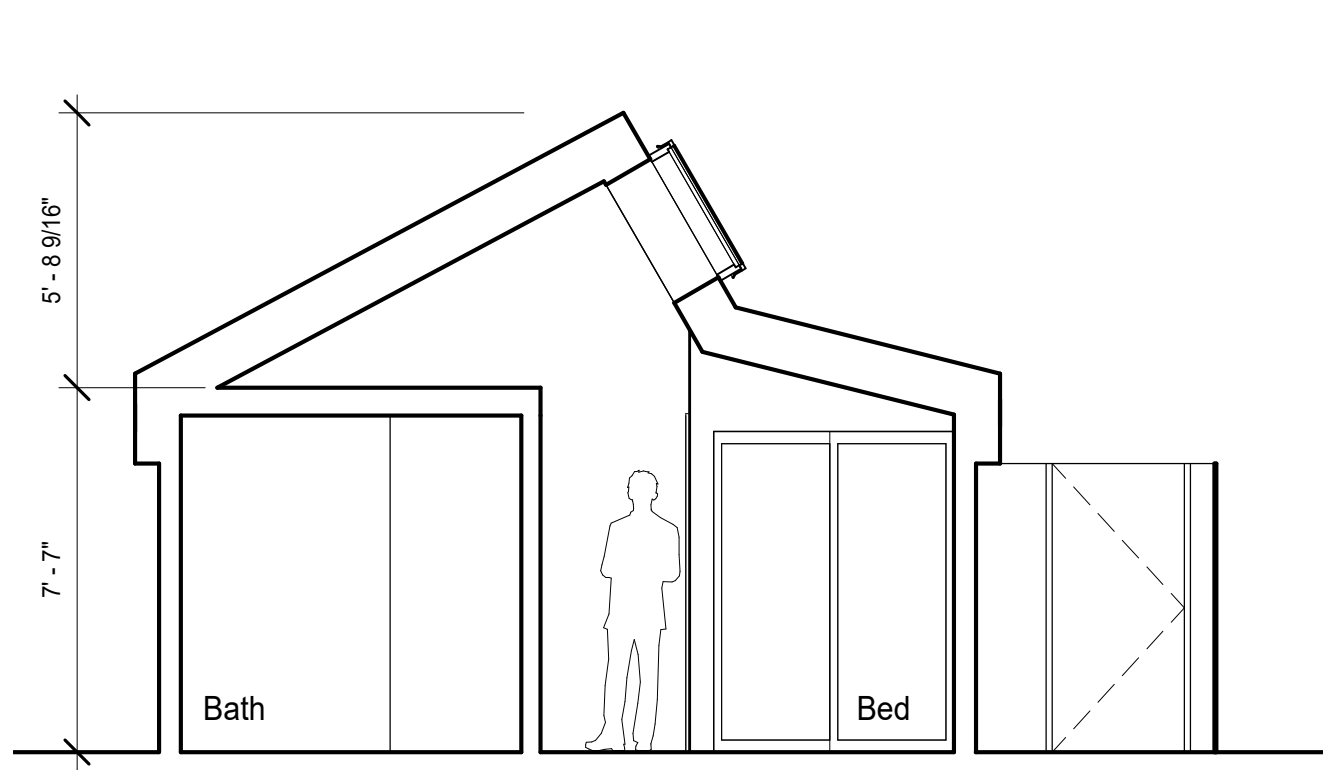
2 | BACK ELEVATION
1/4" = 1'-0"



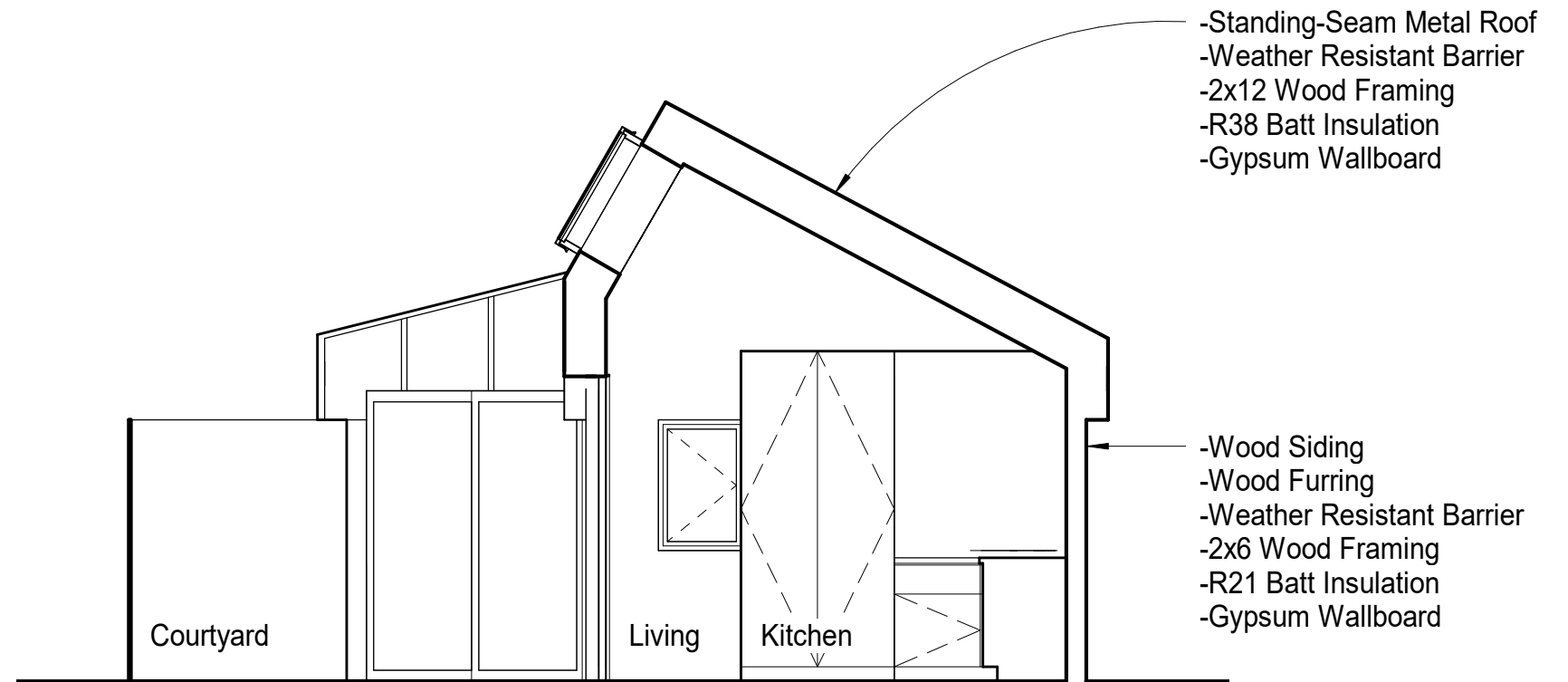
3 | RIGHT ELEVATION
1/4" = 1'-0"



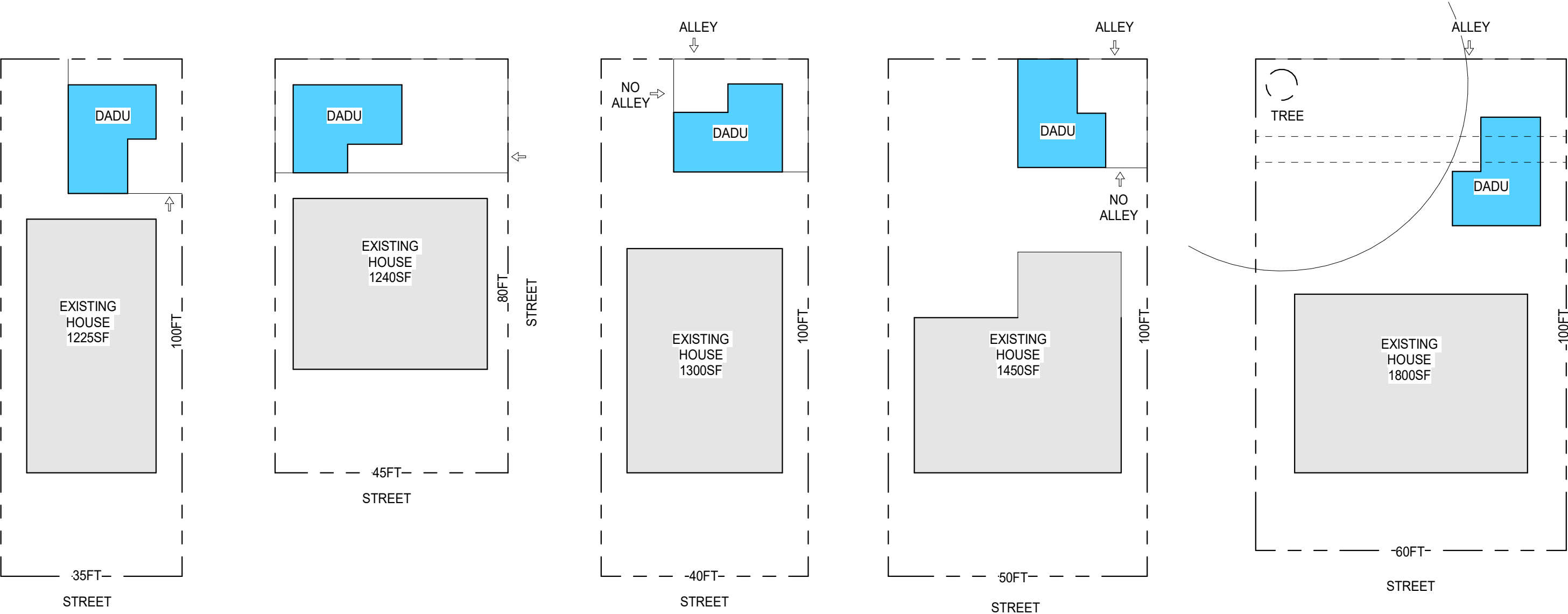
4 | FRONT ELEVATION
1/4" = 1'-0"



1 | SECTION THROUGH BEDROOM
1/4" = 1'-0"



2 | SECTION THROUGH COURTYARD
1/4" = 1'-0"



Compact dimensions allow Courtyard House to fit within many lot shapes and sizes

YES Architecture	-	COURTYARD HOUSE SITE OPTIONS	F
------------------	---	------------------------------	---