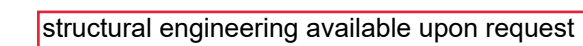
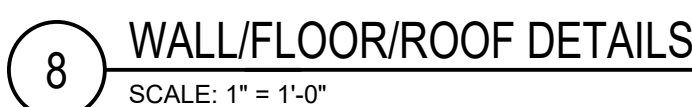


NOT APPROVED  
FOR  
CONSTRUCTION



**Project Description:**

This 880SF DADU is a simple, low-cost, slab-on-grade "box" that is easy to construct and has nice proportions that compliment a residential neighborhood. Although the renderings are craftsman in nature, any siding materials can be substituted to match the desired style. The main floor has an open great room concept with powder room, and the windows can be made larger or smaller depending on the privacy needs in any location. The upper level features a large bedroom with full bathroom, laundry closet, and walk-in closet. The interior layout can be customized to suit any need. The exterior includes a shed bumpout that is great for storage. In certain circumstances, this DADU can be enlarged to maximize the allowable footprint.

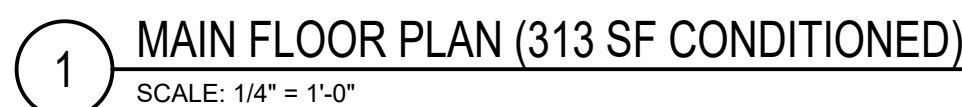
**Project Narrative:**  
Using concrete slab on grade construction, radiant heating, simple shape, simple materials, and a trussed roof, this DADU is very low on cost and works with the familiar practices of Seattle laborers. The simplicity of design, paired with efficient use of materials with minimal waste and a continuous wrap of insulation with efficient radiant heating enable it to meet BuiltGreen standards. The window layout is very flexible to adapt to privacy and daylighting needs without affecting the structural requirements. The simple rectangular form of the house may be clad in any siding material to respond to the architectural style of any neighborhood, and the open floor plan enables the use of any furniture, appliances, or cabinetry layout needed. The lack of any required columns or interior walls makes this design solution very flexible, cost effective, and easy to construct.

Construction Cost Estimate:  
\$175,000 or more (excluding site work and foundations). Quality of windows and materials can affect cost

**Mechanical Systems:**

To save space and simplify foundations and excavation, the building can be heated with an energy efficient boiler (about this size of a large shoebox) via hydronic radiant piping within the concrete slab and wall/ceiling panels. The boiler is also an instant hot water heater for the sink and shower. Areas that cannot feasibly be heated with a boiler can be heated with an infrared electronic radiant ceiling panel for only a few hundred dollars. Radiant heating is the most efficient method of space heating.

Price for Plan:  
\$1000.00 (hourly rate for further work ranges from \$75 - \$185 depending on skill level of staff)

DADU<sup>1</sup>

PERMIT SET 1

## MAIN FLOOR PLAN

## A2.0