

BLOCK 7 POCKET PARK

DESIGN DEVELOPMENT

SUMMARY OF SDC COMMENTS

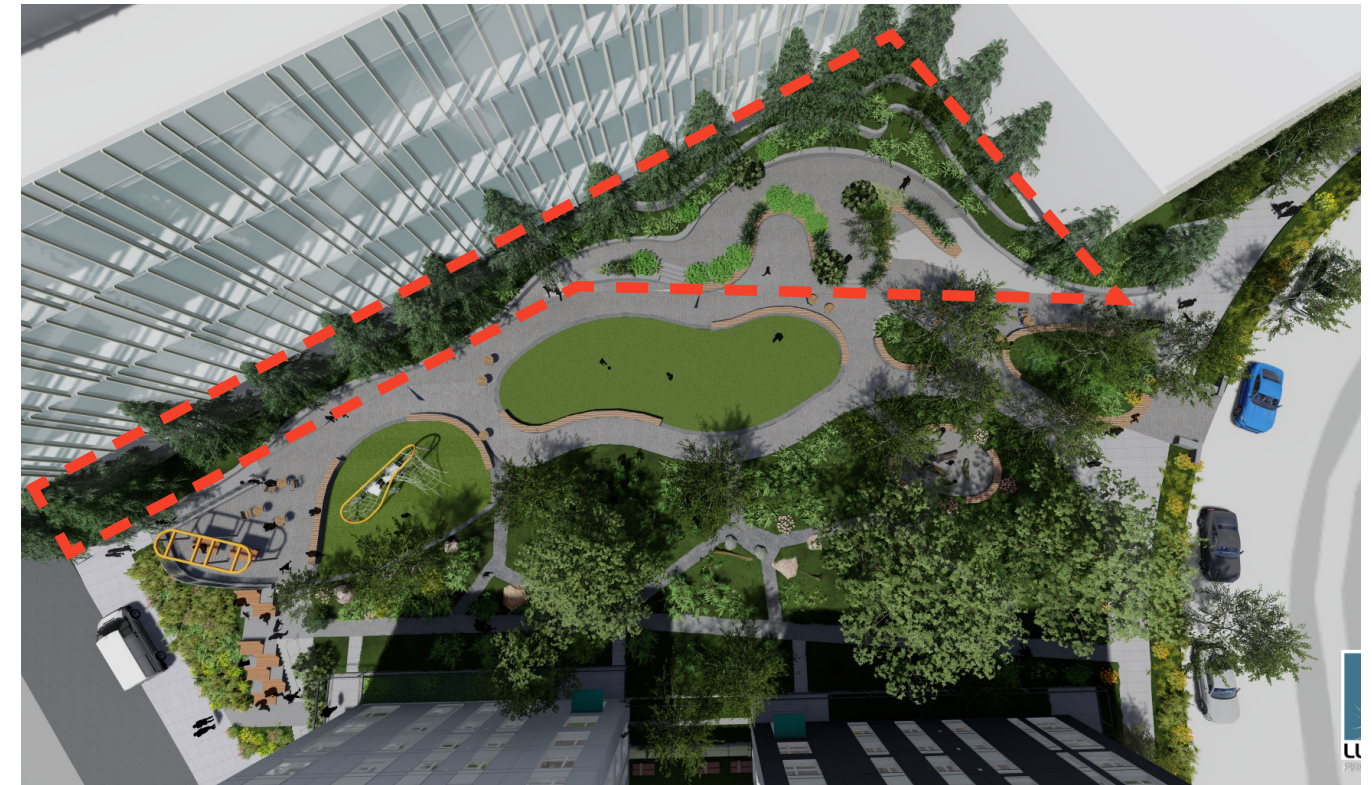
- 1 Provide an update on the coordination with Kaiser Permanente as the concept design continues to develop
- 2 Integrate community stories and histories within park design and programming, specifically those that relate to the Black and Immigrant community
- 3 Provide information on current communities living within the neighborhood and how they are influencing the overall design concept
- 4 Consider the integration of art within the design concept
- 5 Consider engaging with a local artist
- 6 Provide a sustainability and resiliency strategy that will better incorporate practices into the design and programming of the park
- 7 Consider opportunities to increase green space and to reduce pathways within the design
- 8 Develop a defined ADA accessible pathway across the park site, from 8th Ave to public access drive
- 9 Show how design elements in the public access drive can better serve the programming within the western edge of the park
- 10 Continue to develop material elements with a common design language

SUMMARY OF SDC COMMENTS

1 Provide an update on the coordination with Kaiser Permanente as the concept design continues to develop

The Kaiser Permanente project is currently early in the design and development process. The land sale has closed between SHA and Kaiser Permanente and the project schedule is still to be determined. It is very likely that the pocket park will be constructed prior to completion of the Kaiser Permanente project.

Based on our understanding of the program and functional requirements of the Kaiser Permanente project, the space identified for potential park expansion is expected to remain. SHA and the design team are committed to continued coordination with the Kaiser Permanente team with the goal of expanding publically accessible open space. Our team will continue to update SDC regarding status of coordination and any significant impacts on the pocket park design.



SUMMARY OF SDC COMMENTS

② Integrate community stories and histories within park design and programming, specifically those that relate to the Black and Immigrant community

The design team has continued to coordinate with the Yesler Terrace Arts Initiative to better understand the framework of the Yesler Terrace Art Master Plan, existing/planned art and storytelling elements located throughout the neighborhood to date, and potential storytelling threads and histories that could be shared through the pocket park design and/or art process.

Given the breadth of community stories that exist within Yesler Terrace, the design team and SHA staff have developed a narrative around historical cycles of displacement and the ideas that constitute healthy connection to home and nature. Given that these ideas can be both highly personal or tied to culture, a concept was developed to collect elements from residents and neighbors that reinforce healthy connections to home and nature that could be memorialized and shared in the pocket park.

A medicine bag was identified as a vessel for the many stories and elements to be incorporated into the park. Medicine bags are common across nearly all continents and many cultures. In some cultures they are tied directly to physical healing via community medicine men or shaman but in many are used to collect items that contribute to personal harmony and provide spiritual value to community members.

Medicine bags tend to be organized around four kingdoms: Plant, Animal, Mineral, and Human and contain elements that personally represent each to the owner.



Property of University of Washington Libraries, Special Collections



SUMMARY OF SDC COMMENTS

2 Integrate community stories and histories within park design and programming, specifically those that relate to the Black and Immigrant community

Following research of the presence of these elements across a broad range of geography and cultures, the design team developed a narrative exercise based around the medicine bag as the vessel for collecting and sharing community stories and values in the park.

Participants in community workshops have been asked to create their own medicine bag by including items that bring joy, reinforce connection to nature, help them feel at home, share their stories, and represent community or cultural values. A community open space element was also added so that participants could share a specific park element or feeling that is personally restorative to them.

The ongoing pandemic has presented challenges in facilitating these types of workshops so the exercise materials have been developed for facilitated sessions during remote group meetings and individual packages where participants can review/respond on their own via electronic survey tools. Given the portability of the exercise materials, the design team intends to continue collecting medicine bag elements through the remainder of the design process.

The collected elements will be shared to inform art, artful elements, and planting within the park. Refer to responses to comments #4 and #5 for additional information regarding art program and process.

WHAT IS THE STORYTELLING VESSEL?

COMMON ELEMENTS OF MEDICINE BAGS



PLANT KINGDOM

Sage, Sweetgrass, Cedar
Corn, Beans, and Squash Seeds
Flowers, Leaves
Tobacco
Roots

ANIMAL KINGDOM

Lock of hair, mane or tail
Bone or Tooth
Feather
Claw or Nail
Shell

MINERAL KINGDOM

Stone Fetish
Healing Stone
Gems and Crystals
Flint Stone, Arrowhead
Dirt, Sand

HUMAN KINGDOM

Photo
Key
Charm
Personal Item
Coin

WHAT'S IN YOUR MEDICINE BAG?



PLANT ELEMENT:

Conifer smells
Moss - where its at
Flowering shrubs in spring - Green Seattle
SU Native (indig) garden w/ signage
Driftwood - Logging history



ANIMAL ELEMENT:

Sea shells
Slugs - signify healthy ecosystem
Woodpecker
Representative of bay or slough (indig)



MINERAL ELEMENT:

Arrowheads
Volcanic Ash
Beach pebbles



HUMAN ELEMENT:

Photo of YT area/people
Medicine Men or Healers
Preserved photos of the people who lived in YT - Lots of Doctors/Nurses - Harborview



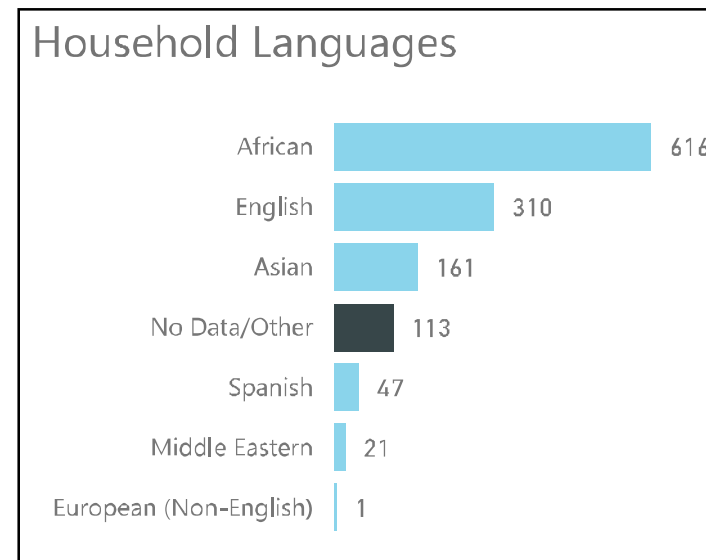
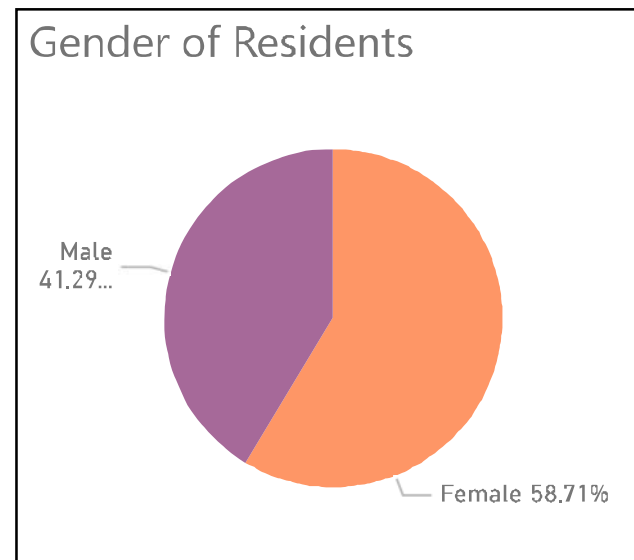
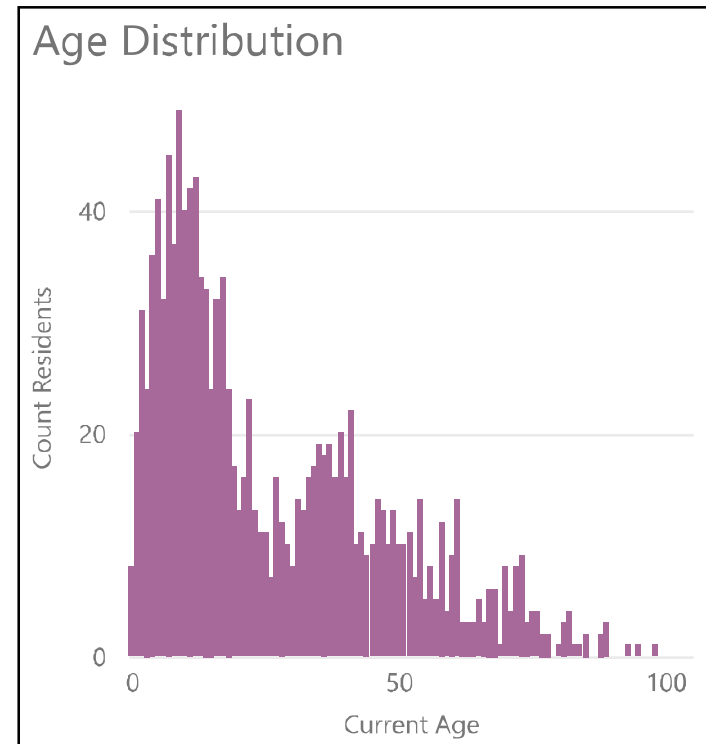
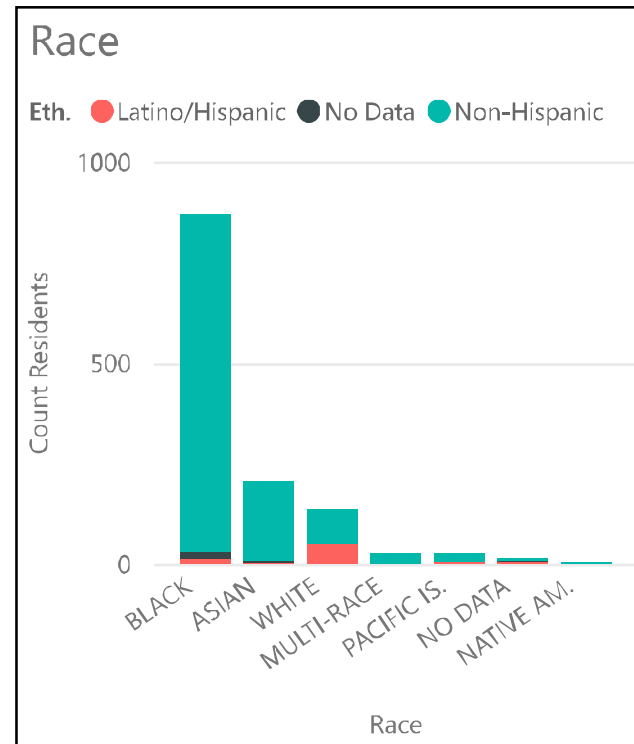
COMMUNITY ELEMENT:

Quiet place with trees
Sitting in a circle as opposed to facing path
Connections and flow through park - what's next? what's the view?
Sharing food - growing, big meals
Taste of Yesler event
Stone table

SUMMARY OF SDC COMMENTS

3 Provide information on current communities living within the neighborhood and how they are influencing the overall design

See demographic dashboard below. This includes data for current residents of Seattle Housing Authority properties within Yesler Terrace.



Regarding race demographics, it is important to note that the Black category is comprised primarily of various African nationalities which is reflected more clearly in the household language category. The Asian category primarily reflects Vietnamese and Chinese nationalities.

Yesler Terrace residents of market-rate housing are not included in the dashboard. Given proximity to First Hill, both medical facilities staff and visitors are also anticipated to be regular users of the park.

Since the previous SDC meeting in the Fall of 2020, the design team has met with or remotely engaged the following groups for design feedback and storytelling workshops:

Yesler Terrace Resident Council

First Hill Improvement Association

Representatives of the Chinatown-International District community including nonprofit organizations such as, SCIDpda, Interim CDC, as well as small businesses and cultural arts organizations

Yesler Terrace Arts Initiative

SUMMARY OF SDC COMMENTS

4 Consider the integration of art within the design concept

As indicated in response to comment #2, a storytelling concept has been developed around historical cycles of displacement and the ideas that constitute healthy connection to home and nature. The stories collected via the medicine bag exercises will become the basis for art, artful elements, and planting design within the park.

The final art program has not been confirmed at this time but is considering a combination of interpretive trail, artful objects or building parts, and botanical themes based on the medicine bag exercises.



5 Consider engaging with a local artist

The project team is committed to engaging an artist or craftsman who is local to Yesler Terrace or a related community.



SUMMARY OF SDC COMMENTS

- ⑥ Provide a sustainability and resiliency strategy that will better incorporate practices into the design and programming of the park

On-Site Stormwater Strategy: 100% Permeable Paving

Planting Strategy: Native/Adaptive and Drought-Tolerant Palette; Adopt 'Future Natives' approach

Carbon Sink: Maximize carbon sink opportunities through tree retention, proper soil preparation, and planting strategy

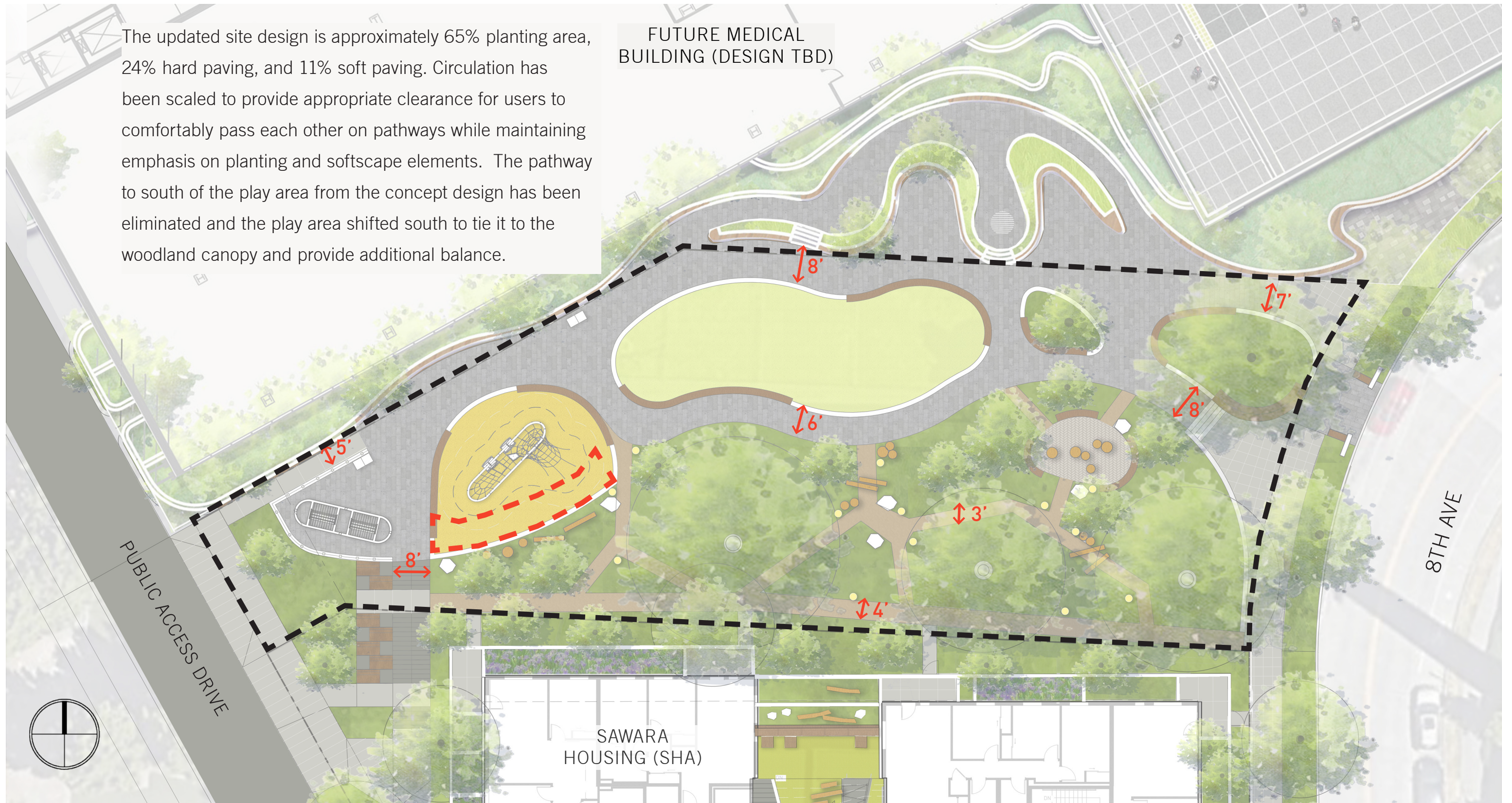
Material Selection: Apply informed material selection process with eye towards balancing carbon limiting, health/safety, maintenance, and function

Education and Healthy Communities: Apply opportunities for storytelling and interpretive learning in site design and park experience; Build in flexible spaces for learning and exploration

SUMMARY OF SDC COMMENTS

7 Consider opportunities to increase green space and to reduce pathways within the design

The updated site design is approximately 65% planting area, 24% hard paving, and 11% soft paving. Circulation has been scaled to provide appropriate clearance for users to comfortably pass each other on pathways while maintaining emphasis on planting and softscape elements. The pathway to south of the play area from the concept design has been eliminated and the play area shifted south to tie it to the woodland canopy and provide additional balance.



SUMMARY OF SDC COMMENTS

- 8 Develop a defined ADA accessible pathway across the park site, from 8th Ave to public access drive

A continuous ADA accessible pathway is provided along the north side of the park linking 8th Avenue to the Public Access Drive. The majority of hardscape paving in the park is graded to maintain ADA access, with 5% max longitudinal and 2% max cross-slopes. Landings will be provided at 8th Avenue and PAD given the severe slopes from North to South.



SUMMARY OF SDC COMMENTS

9 Show how design elements in the public access drive can better serve the programming within the western edge of the park

Public Access Drives (PAD)

From Yesler Terrace Design Guidelines:

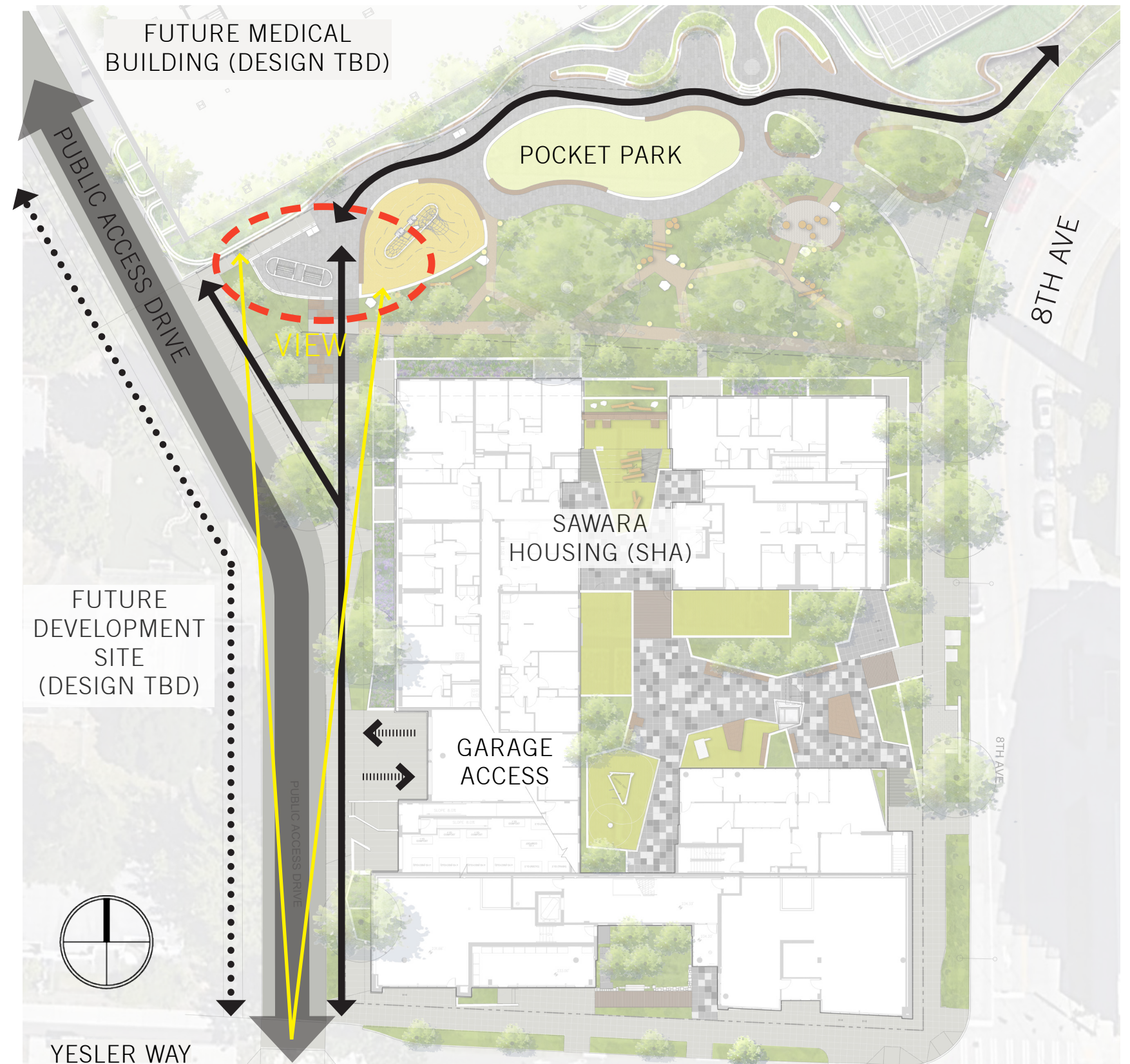
Pedestrian pathways and access drives provide access, including public access, to the interior of development blocks. They support the new street network, which better connects Yesler Terrace both internally and to the surrounding neighborhoods. Pedestrian pathways and access drives also help break up large blocks, and serve as part of the neighborhood's circulation and open space network. The Yesler Terrace Planned Action Ordinance requires pedestrian pathways and access drives in certain key locations; additional pathways or access drives may be incorporated in a project.

PAD's accommodate both pedestrian and vehicular access.

The vehicular portion of the PAD has been permitted separately and will be constructed in advance of the Block 7 Pocket Park; The pedestrian portions are permitted and constructed by the adjacent project(s).

SDOT and SPU review the PAD's for utilities only; SDCI reviews the pedestrian elements with permitting of adjacent project(s).

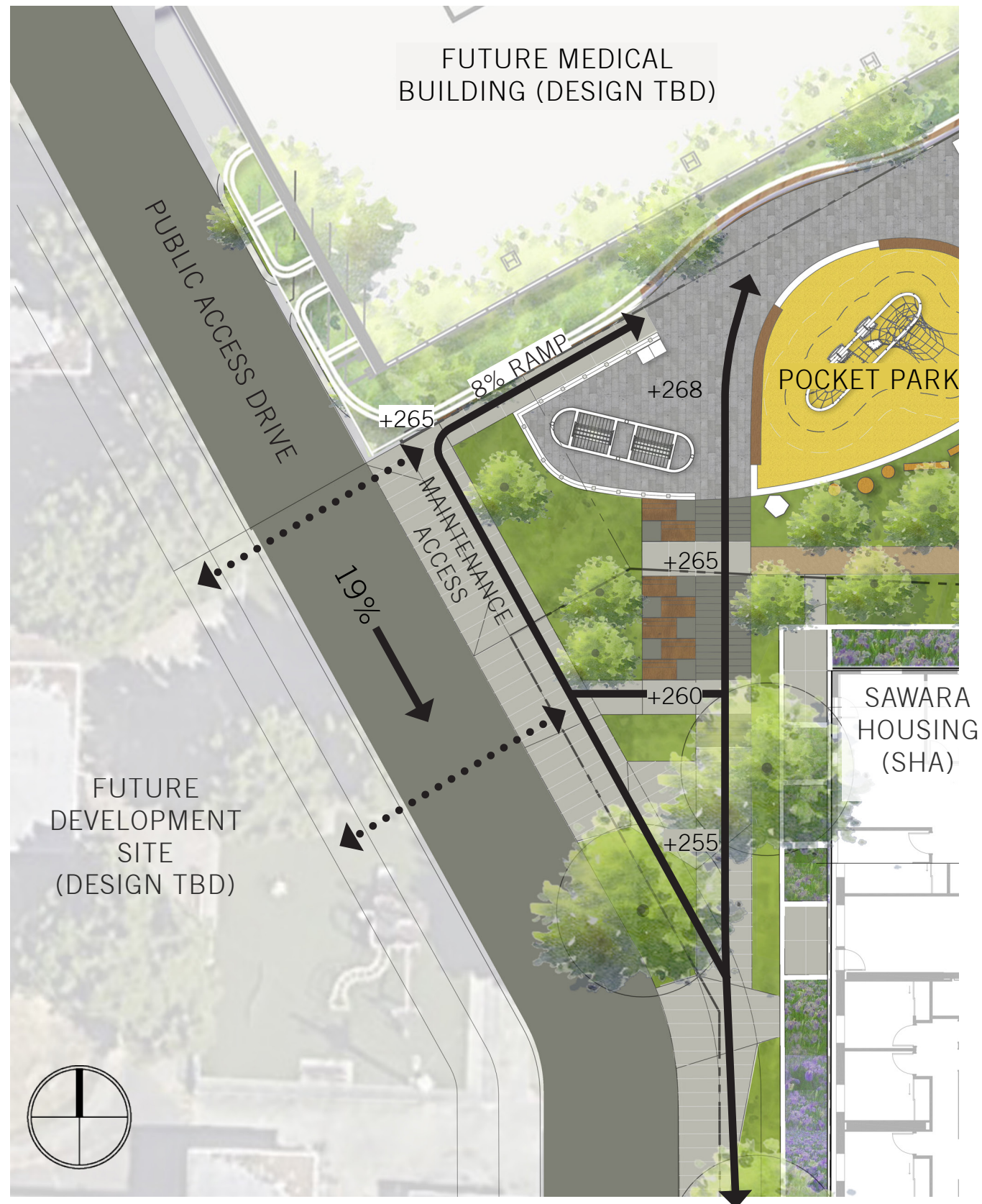
Typical PAD easement is 32' but 44' is being provided here to increase opportunities for trees and understory planting.



BLOCK 7 POCKET PARK

SUMMARY OF SDC COMMENTS

- 9 Show how design elements in the public access drive can better serve the programming within the western edge of the park



BLOCK 7 POCKET PARK



SUMMARY OF SDC COMMENTS

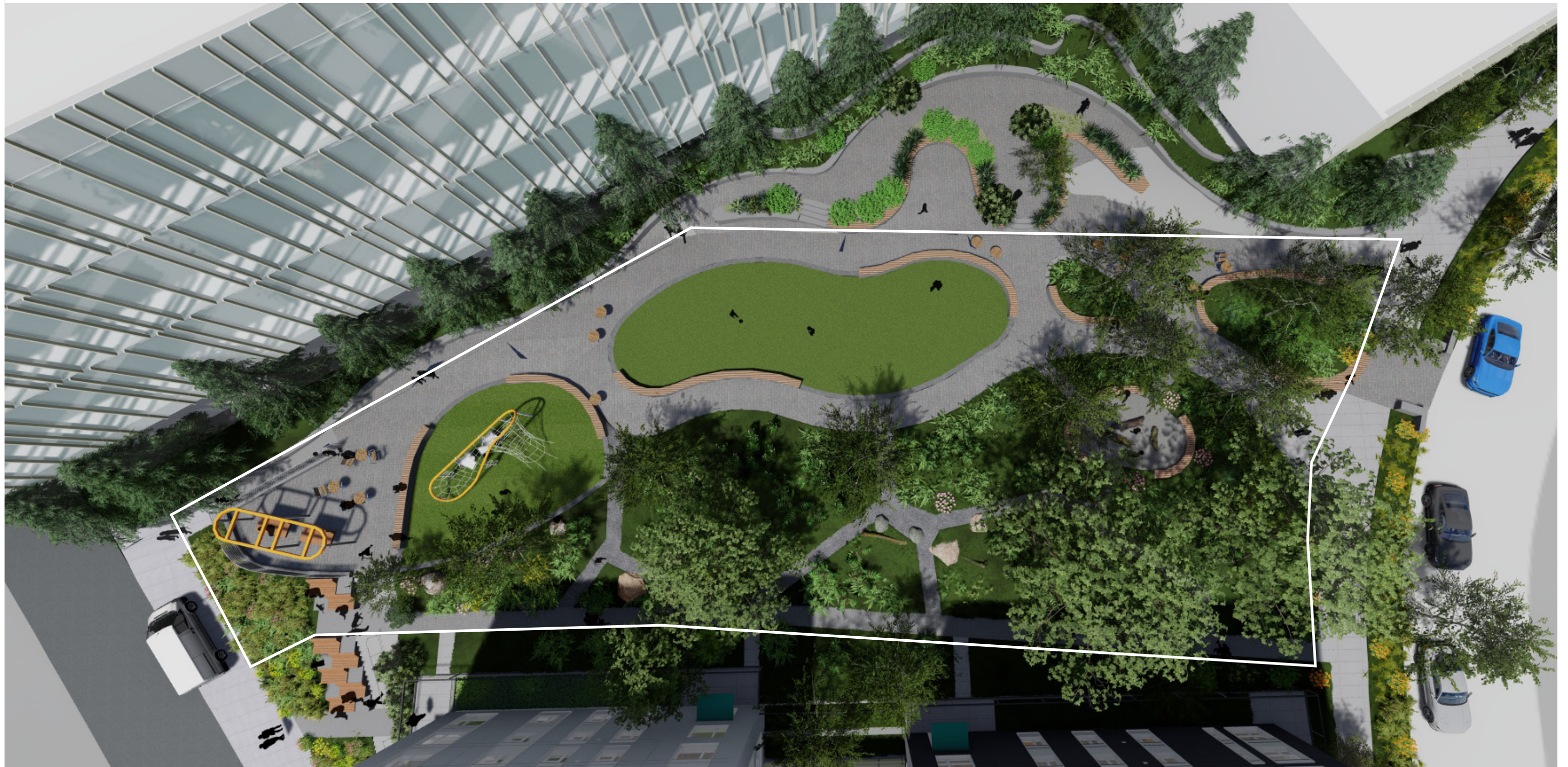
- 10 Continue to develop material elements with a common design language

Refer to Plans, Materials, Details, Planting, Art, Lighting, and Wayfinding.

CONCEPT SITE PLAN



SITE CONCEPT



BLOCK 7 POCKET PARK

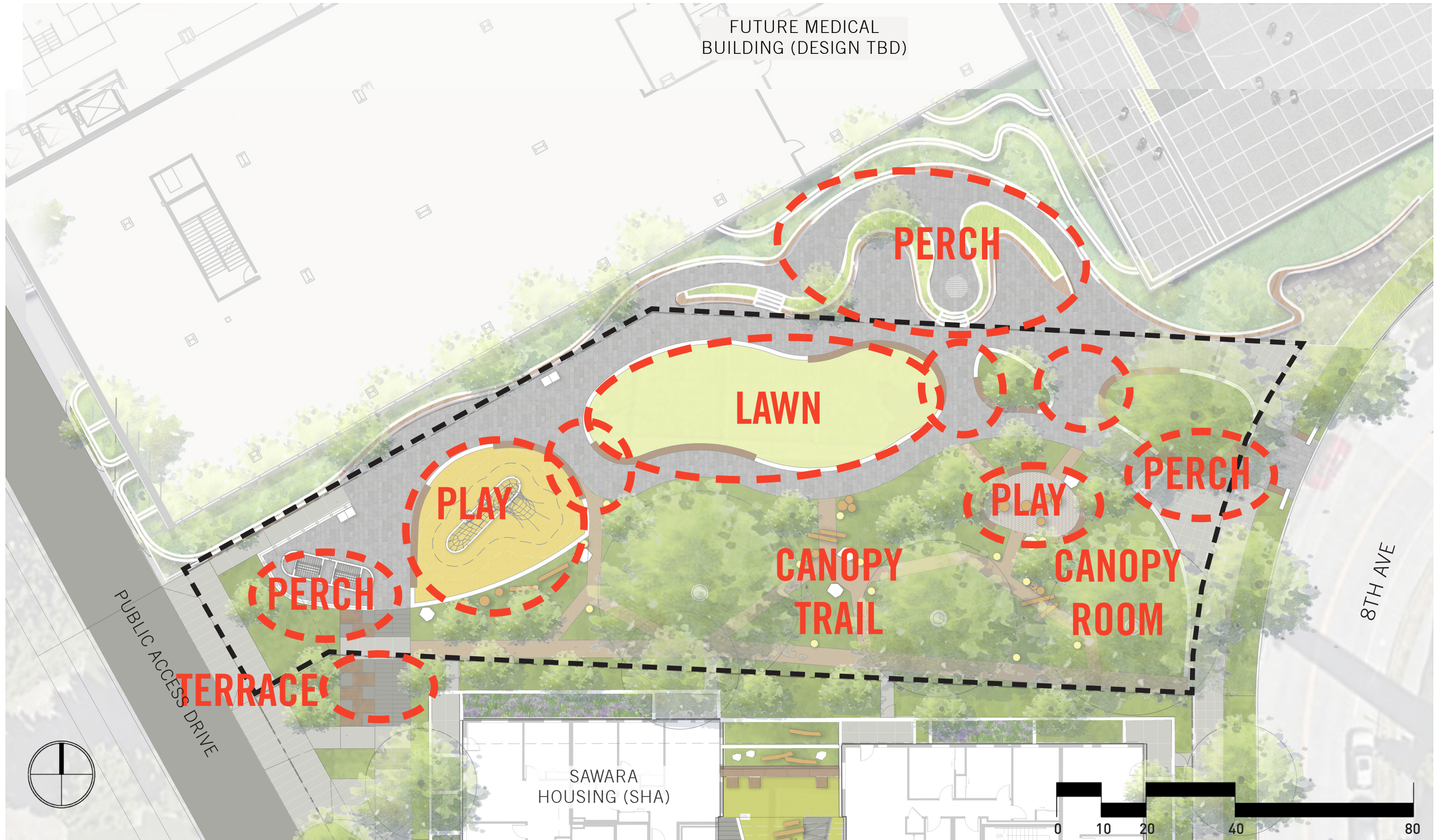
SITE PLAN

Legend - Site Plan:

- | | | |
|------------------|----------------------|--------------------------|
| ① Lawn | ⑦ ADA Ramp | ⑬ Green Loop Pause Point |
| ② Play Area | ⑧ Plaza Paving | |
| ③ West Viewpoint | ⑨ Woodland Paving | |
| ④ East Viewpoint | ⑩ Canopy Room | |
| ⑤ Hillclimb | ⑪ Maintenance Access | |
| ⑥ Fixed Seating | ⑫ Tree to Remain | |



PROGRAM OVERLAY



BIRDSEYE VIEW



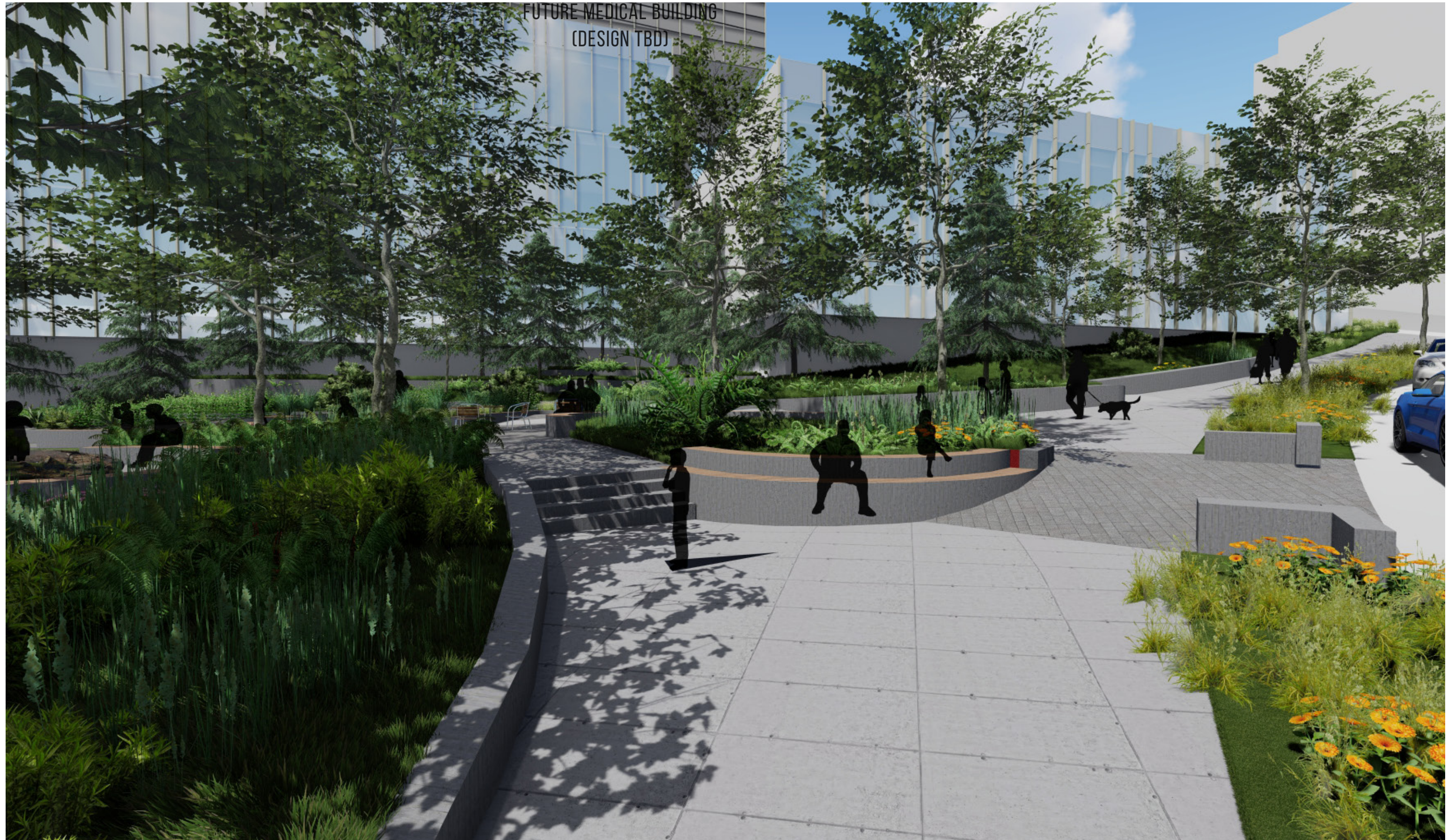
BLOCK 7 POCKET PARK

8TH AVENUE LOOKING SOUTH



FUTURE MEDICAL BUILDING
(DESIGN TBD)

8TH AVENUE LOOKING NORTH



FUTURE MEDICAL BUILDING
(DESIGN TBD)

PLAZA + PERCH



FUTURE MEDICAL BUILDING
(DESIGN TBD)

FUTURE MEDICAL BUILDING
(DESIGN TBD)

POTENTIAL PARK
SPACE ON KP MEDICAL
BUILDING SITE



PUBLIC ACCESS DRIVE



BLOCK 7 POCKET PARK

PUBLIC ACCESS DRIVE



FUTURE MEDICAL BUILDING
(DESIGN TBD)

CANOPY TRAIL



FUTURE MEDICAL BUILDING
(DESIGN TBD)

CANOPY ROOM



BLOCK 7 POCKET PARK

CANOPY TRAIL



BLOCK 7 POCKET PARK

HARDSCAPE MATERIALS



01 Permeable Unit Paving



02 Flexible Porous Paving



03 Turf Safety Surfacing



04 Cast-in-Place Concrete Walls

NEUTRAL FIELD
DYNAMIC
PERMEABLE



FIXED SEATING



01 Freestanding Benches



02 Wall Top Benches



03 Swinging Benches



04 Free-Form

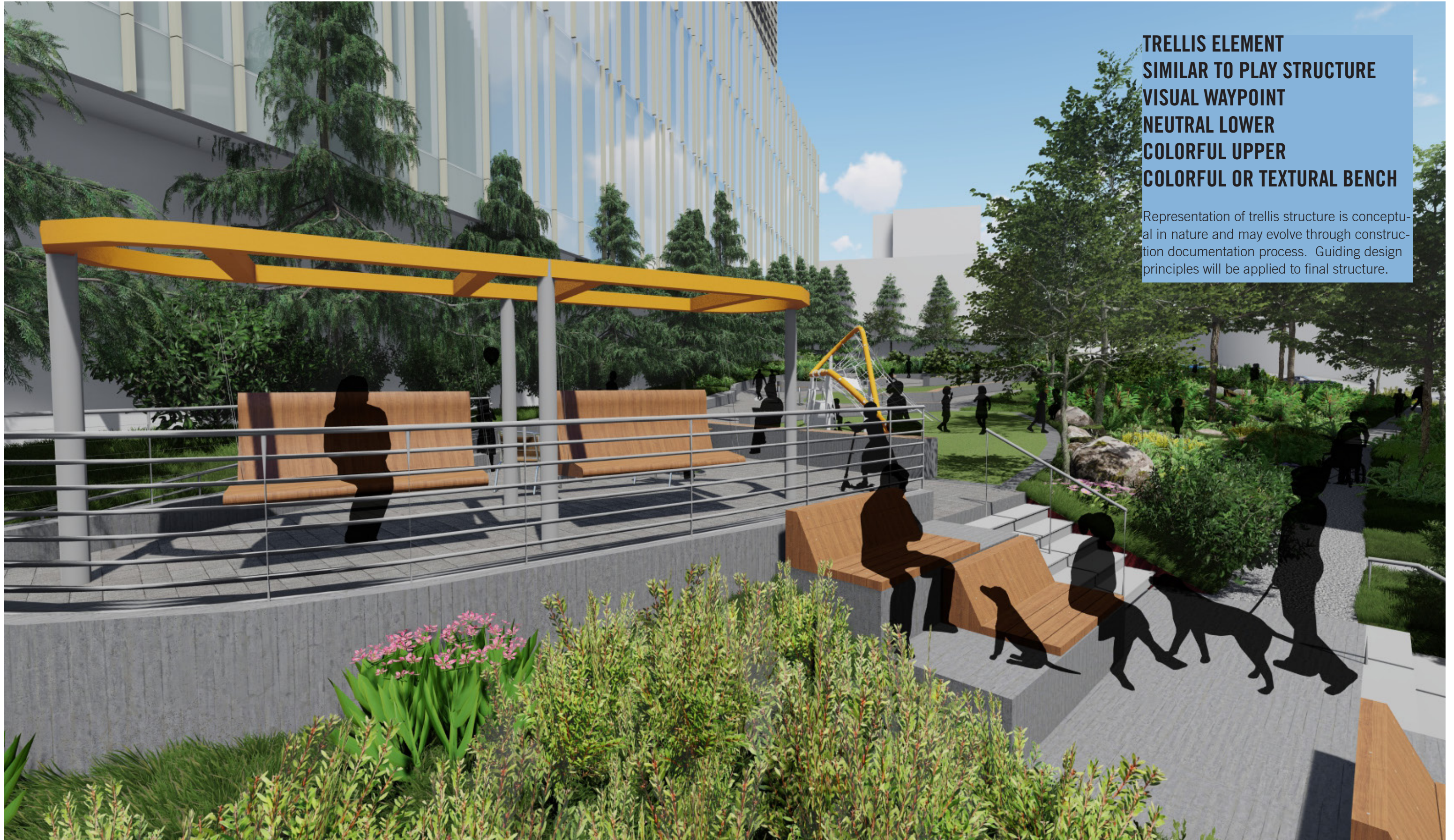
RADIUSSED BASIC FORM
WOOD SLATS
NEUTRAL LOWER METAL
COLORFUL UPPER METAL
MIX OF BACKS AND NO BACKS



HANGING BENCHES

TRELLIS ELEMENT
SIMILAR TO PLAY STRUCTURE
VISUAL WAYPOINT
NEUTRAL LOWER
COLORFUL UPPER
COLORFUL OR TEXTURAL BENCH

Representation of trellis structure is conceptual in nature and may evolve through construction documentation process. Guiding design principles will be applied to final structure.



PLAY AREA



DISTINCT FORM
VISUAL WAYPOINT
NEUTRAL LOWER
COLORFUL UPPER
RANGE OF ACTIVITIES

Representation of play structure is conceptual in nature and may evolve through construction documentation process. Guiding design principles will be applied to final structure.

PLAY AREA



PLANTING PLAN



PLANTING PALETTE

Palette is responsive to anticipated microclimates given irregular shape
 Combination of sunny, edge, and woodland understory plants
 Targeting native/adaptive and drought tolerant
 Includes 'future natives' in anticipation of continued climate change
 Automatic irrigation system for extremes but aim is minimized watering



Quercus lobata
Valley Oak



Quercus kelloggii
California Black Oak



Cercis occidentalis
Western Redbud



Magnolia denudata
Yulan Magnolia

Sunnier Edges Palette



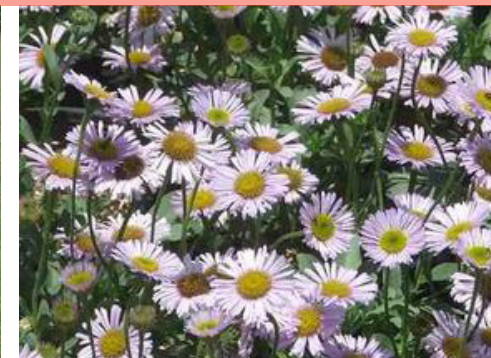
Arctostaphylos 'Monica'
Manzanita



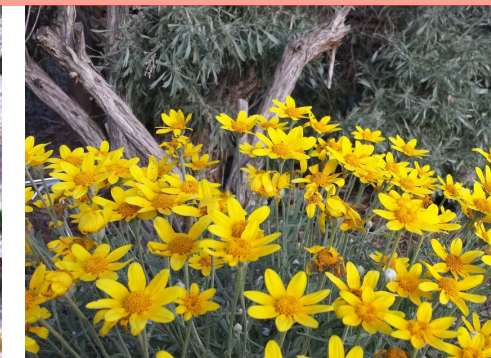
Koeleria macrantha
Prairie Junegrass



Deschampsia flexuosa
Wavy Hair Grass



Erigeron g. 'Wayne Roderick'
Wayne Roderick Daisy



Eriophyllum lanatum
Woolly Sunflower



Iris tenax
Toughleaf Iris

Shadier Edges Palette



Ribes sanguineum
Red Flowering Currant



Adiantum x tracyi
Hybrid Maidenhair Fern



Quercus sadleriana
Sadler's Oak



Asarum caudatum
Wild Ginger



Erythronium oregonum
Giant White Fawn Lily



Cynoglossum grande
Western Houndstongue

ART OPPORTUNITIES



01 Interpretive Trail



02 Artful Element



03 Artful Element



04 Interactive Elements

**CYCLES OF DISPLACEMENT
IDEAS OF HOME
CONNECTION TO NATURE
HEALTHY COMMUNITY**

Final storytelling threads will be confirmed with continued input from community members and artist(s).



LIGHTING PLAN



SIGNAGE AND WAYFINDING PLAN



FUTURE MEDICAL
BUILDING (DESIGN TBD)



Public Access Signage

PUBLIC ACCESS DRIVE

8TH AVE

SAWARA
HOUSING (SHA)

0 10 20 40 80

APPENDIX MATERIALS