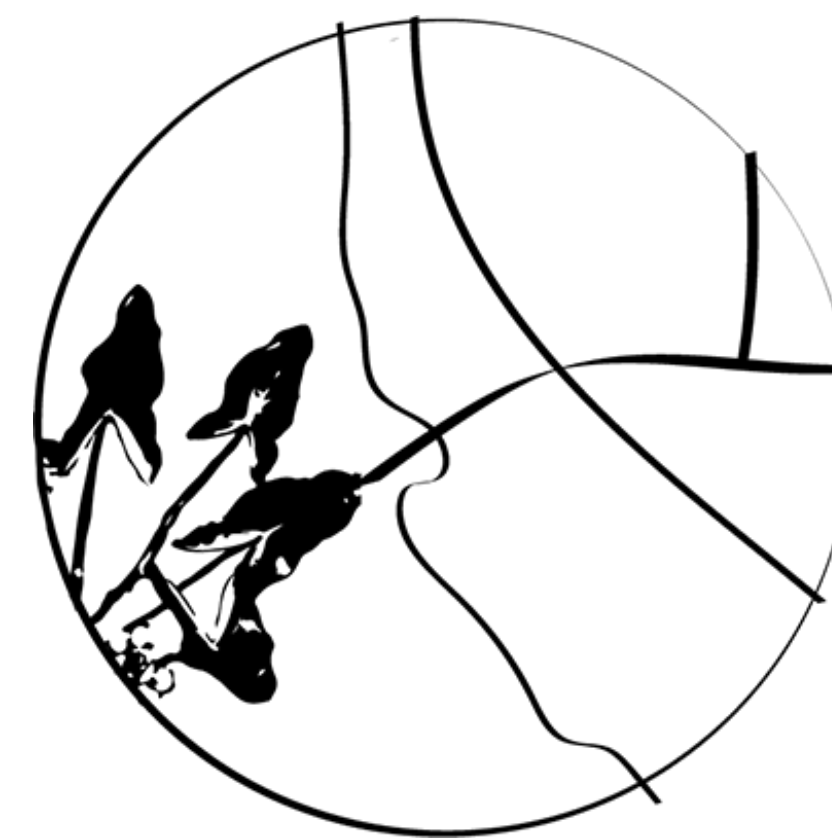




# Terry Pettus Park Renovation Design Commission Meeting #2

November 19, 2020





# Project Background

## Scope

- Remove and replace failing park features (i.e. stairways, retaining walls, bulkhead, boardwalk, pier and float)
- Enhance access to Lake Union by providing an accessible route to the water and new dock
- Shoreline restoration
- Create seating and picnicking opportunities
- Improve sightlines and sense of safety

## Total Project Budget

\$1,500,000

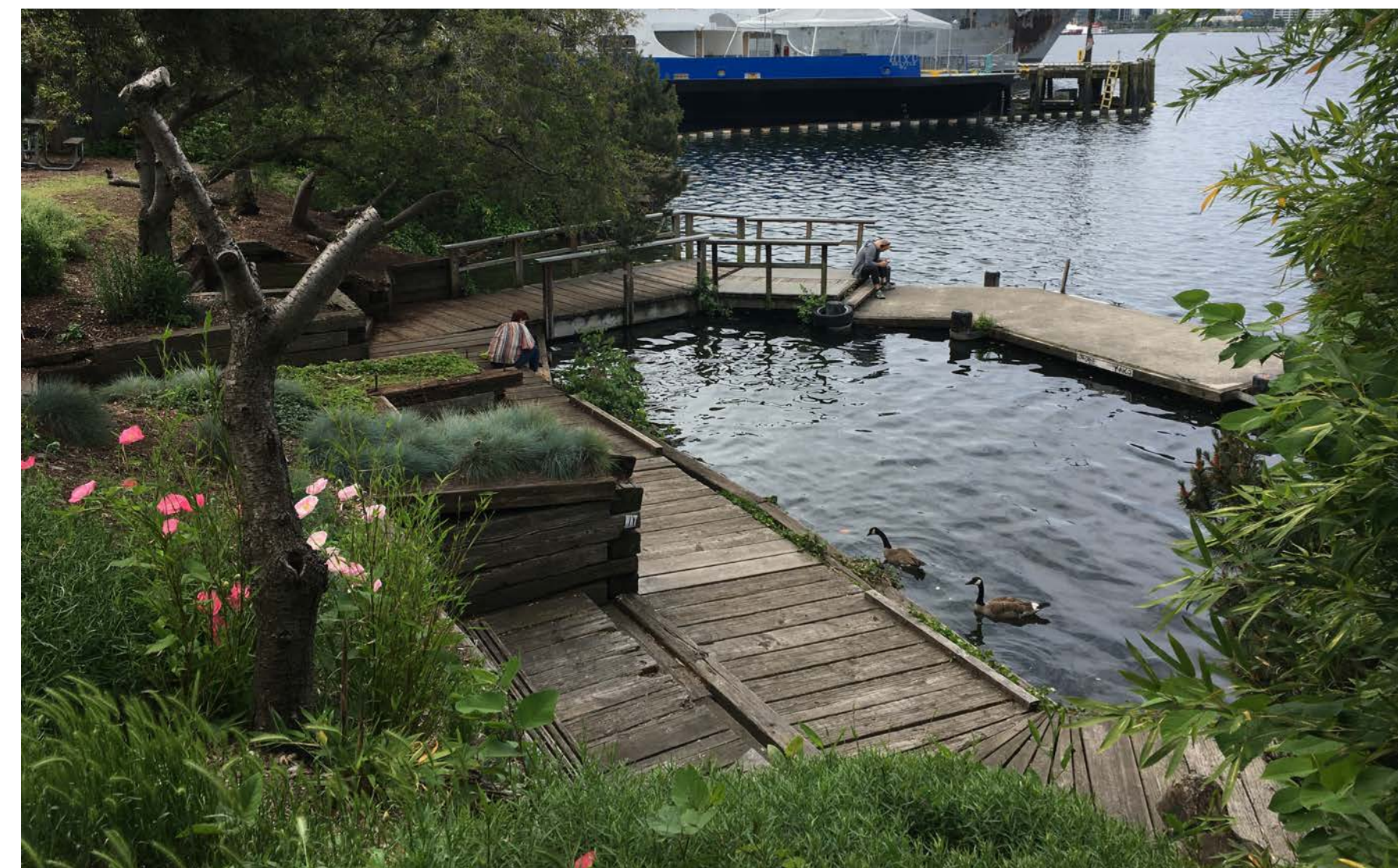
## Schedule

- Online survey to gather early public input
- Proview Presentation #1, July 21, 2020
- Public Presentation #1, July 29, 2020
- Proview Presentation #2, September 8, 2020
- **Design Commission #1, September 17, 2020 (Concept Design Options)**
- Preferred Schematic Design
  - Public Presentation #2, September 23, 2020
  - **Design Commission #2, November 2020**
- Design Development (30% plans)
  - November 2020 - January 2021
  - Proview Presentation #3 January 2021
- Begin Permitting Process\*
  - February 2021
  - Proview Presentation #4 March 2021
  - Proview Presentation #5 November 2021
- Construction Documents (100% CD)
  - February 2022
  - Proview Presentation #6 January 2022

\*SIP application submitted August 31, 2020



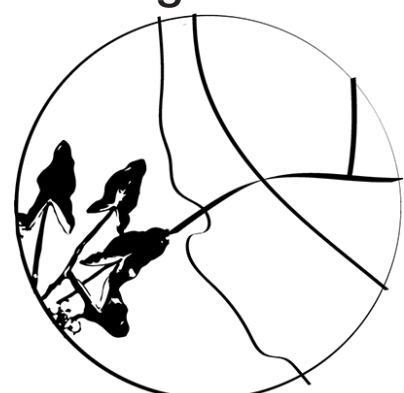
Existing Dock



View toward water



Existing bench & retaining walls



Terry Pettus Park Renovation  
Design Commission Meeting #2 - November 19, 2020



# Public Engagement Strategies

Preliminary SurveyMonkey Survey, live for 8 weeks  
Participation solicited via:

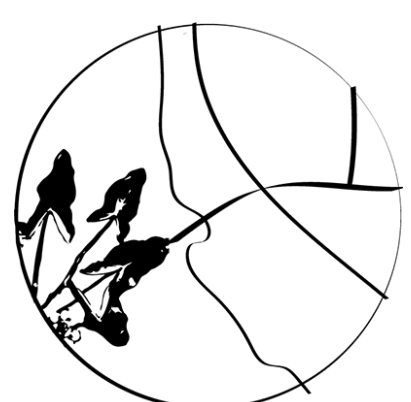
- Fliers at park
- Email blast to community partners
- Press Release
- Parkways Blog
- Twitter and SPR Media Channels
- Nextdoor
- (Zipcodes were collected from respondents)

## Public Meeting #1 & #2 Outreach methods

- Mailer of postcard out to 1500 people within ¼ mile of the park plus internal SPR list
- Email blast to people who took survey and additional SPR list
- Press Release
- Parkways Blog
- Twitter and SPR Social Media Channels
- Nextdoor

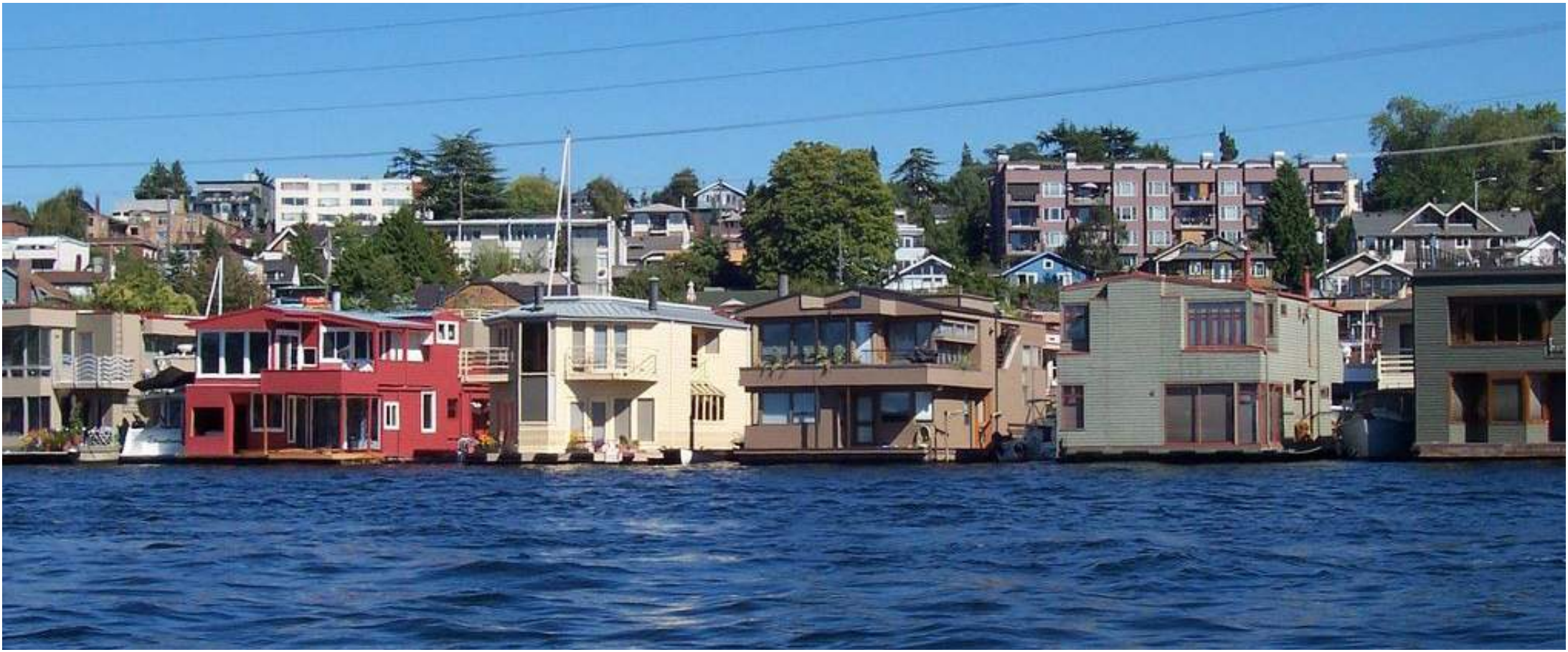
## Ongoing On-Site Outreach:

- Project Information Board with SPR contact info
- QR code for project website



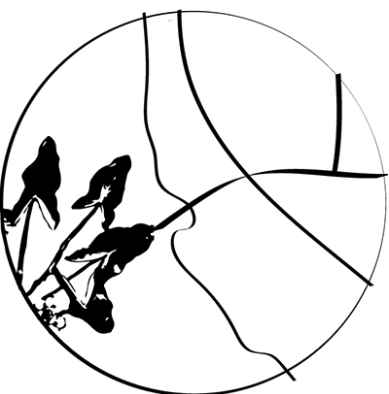
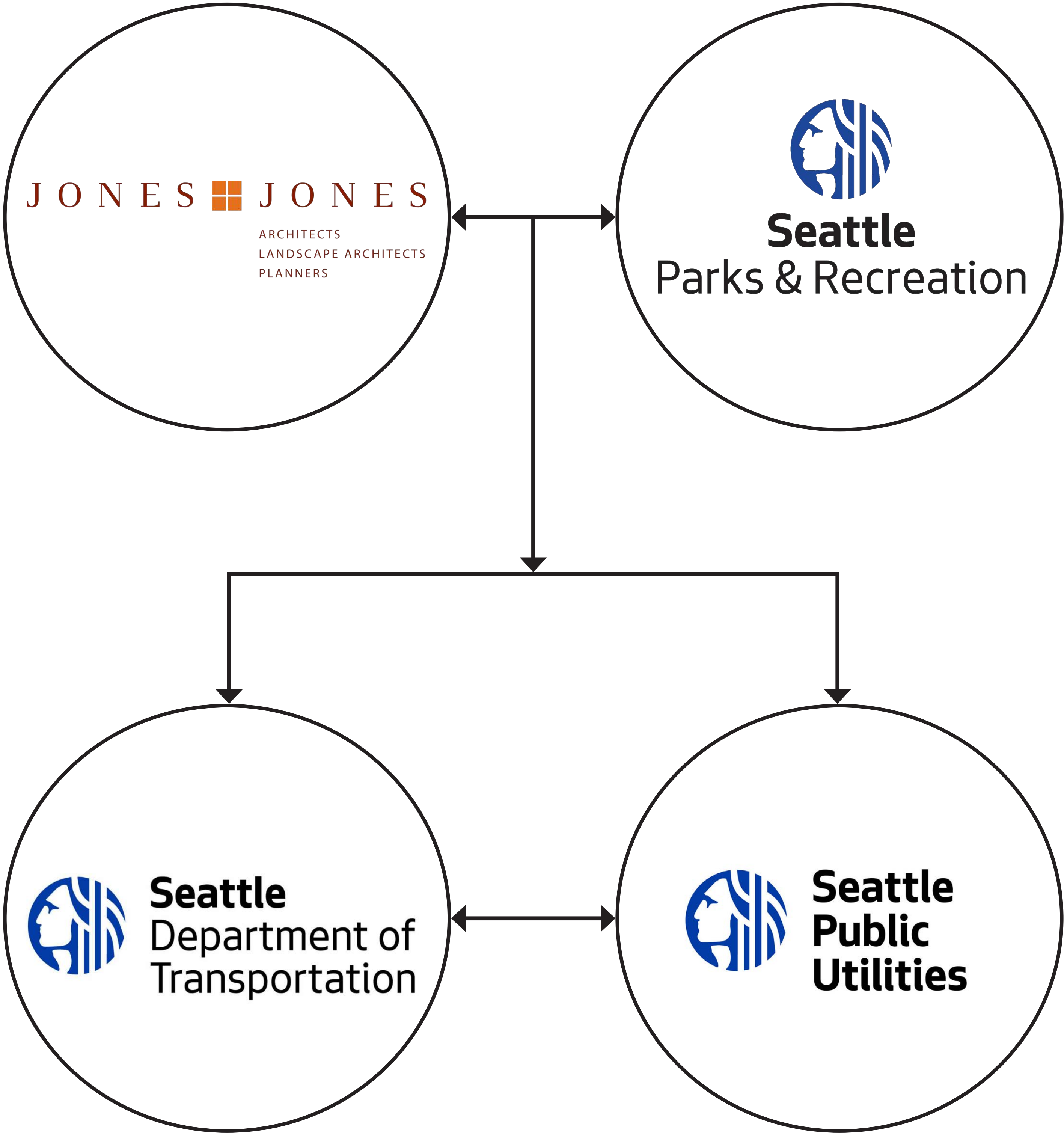


# Recreation Resources Around Lake Union





# Interagency Coordination





# Project Evolution

SPR-Initiated Online Survey



Reviewed Survey Results, Developed Design Intent & Guiding Principles



Coordinate with Agencies (ongoing)



Schematic Design



Feasibility Study by Anchor QEA



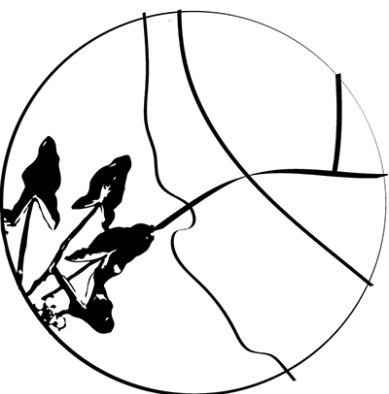
Design Team Selected



Developed four (4) concept options; presented to ProView and to Public; collected feedback

November - Begin 30% Design Development

- Proview #2
- Public Meeting #2
- Design Refinement
- Design Commission #2

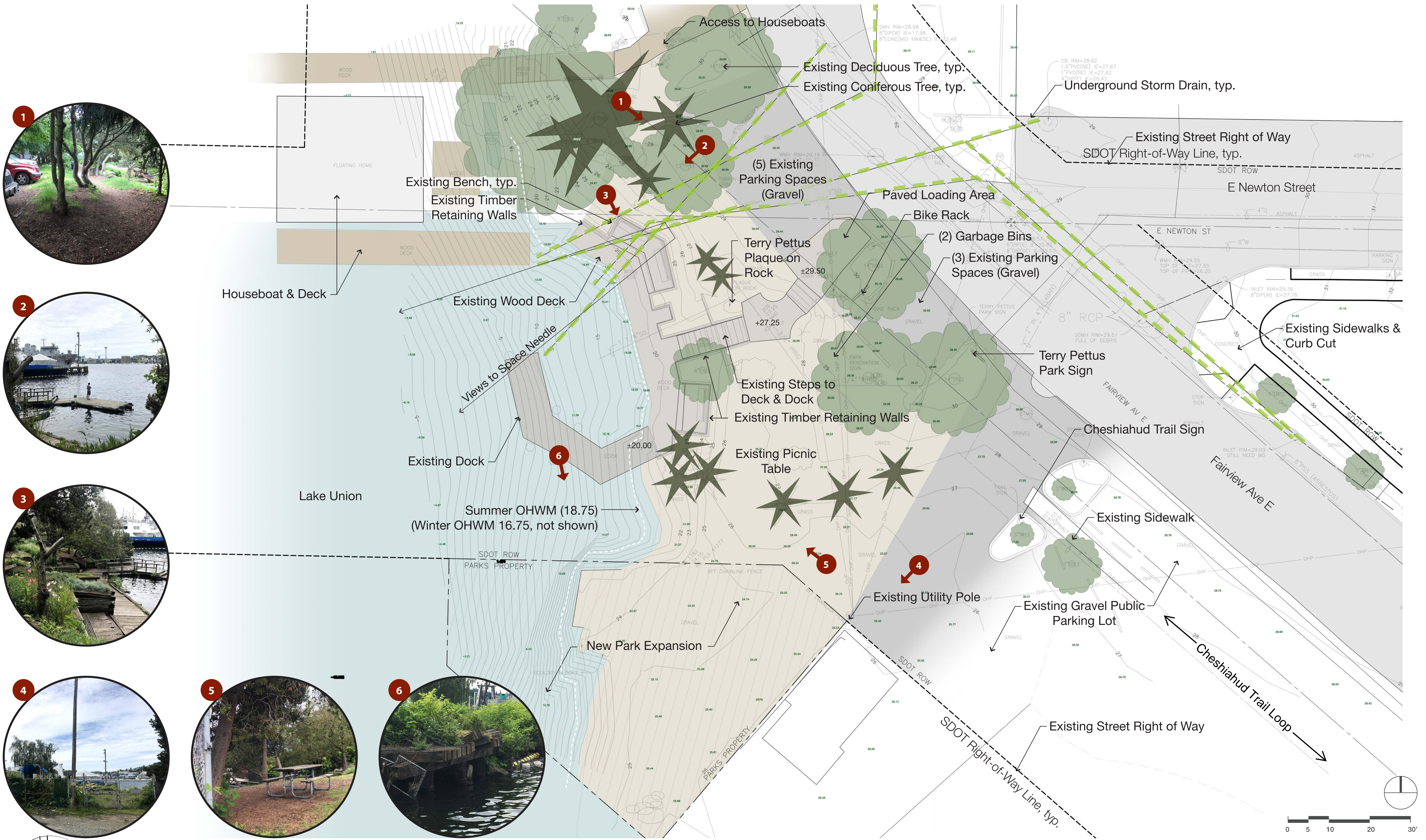


Terry Pettus Park Renovation  
Design Commission Meeting #2 - November 19, 2020



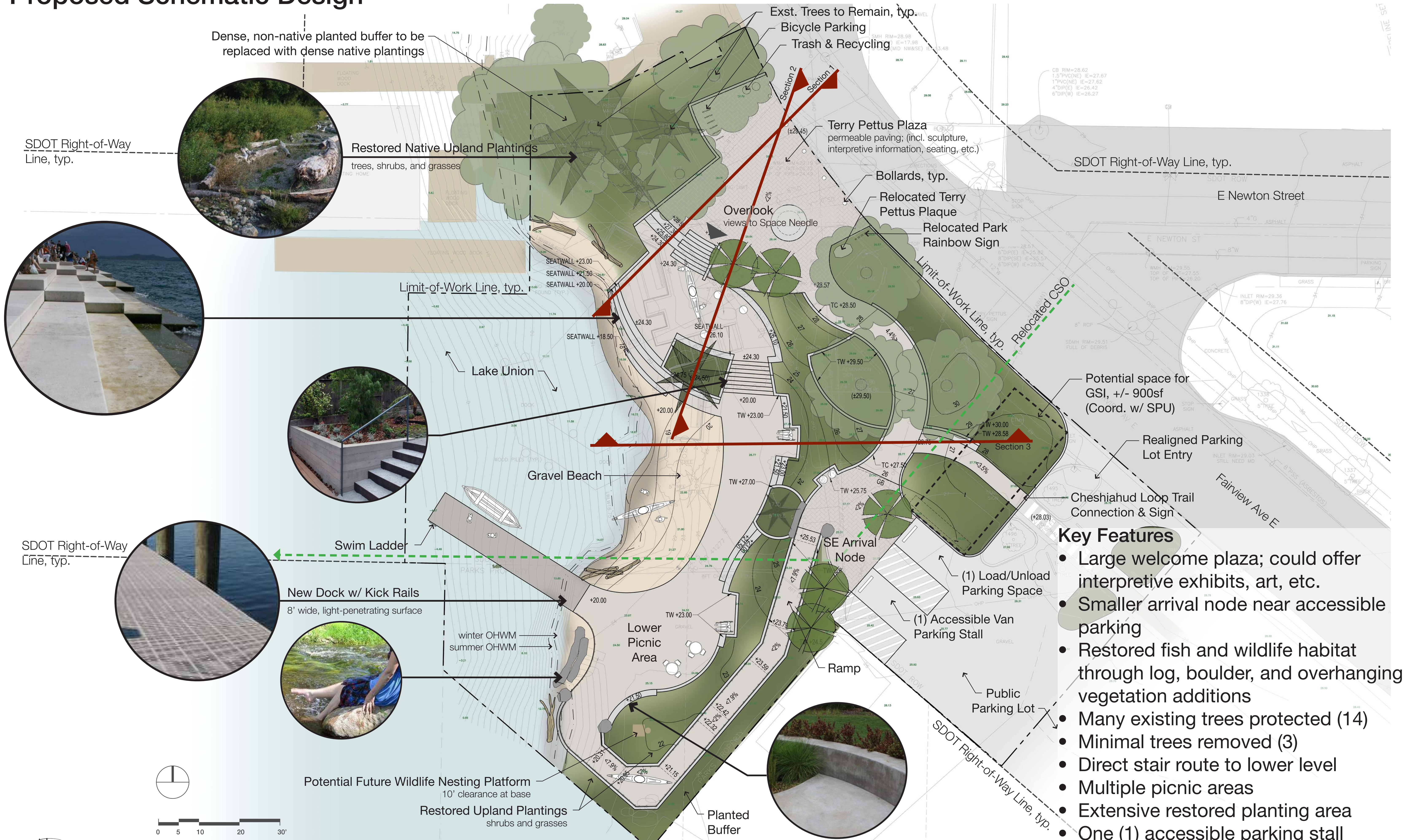


# Existing Conditions: Site & Photo Inventory



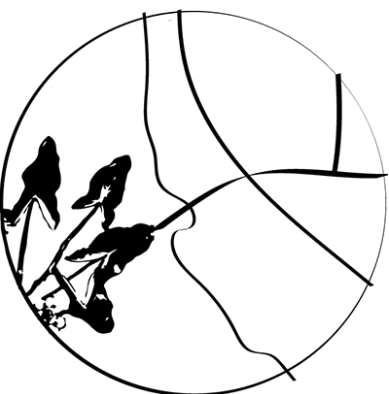


# Proposed Schematic Design



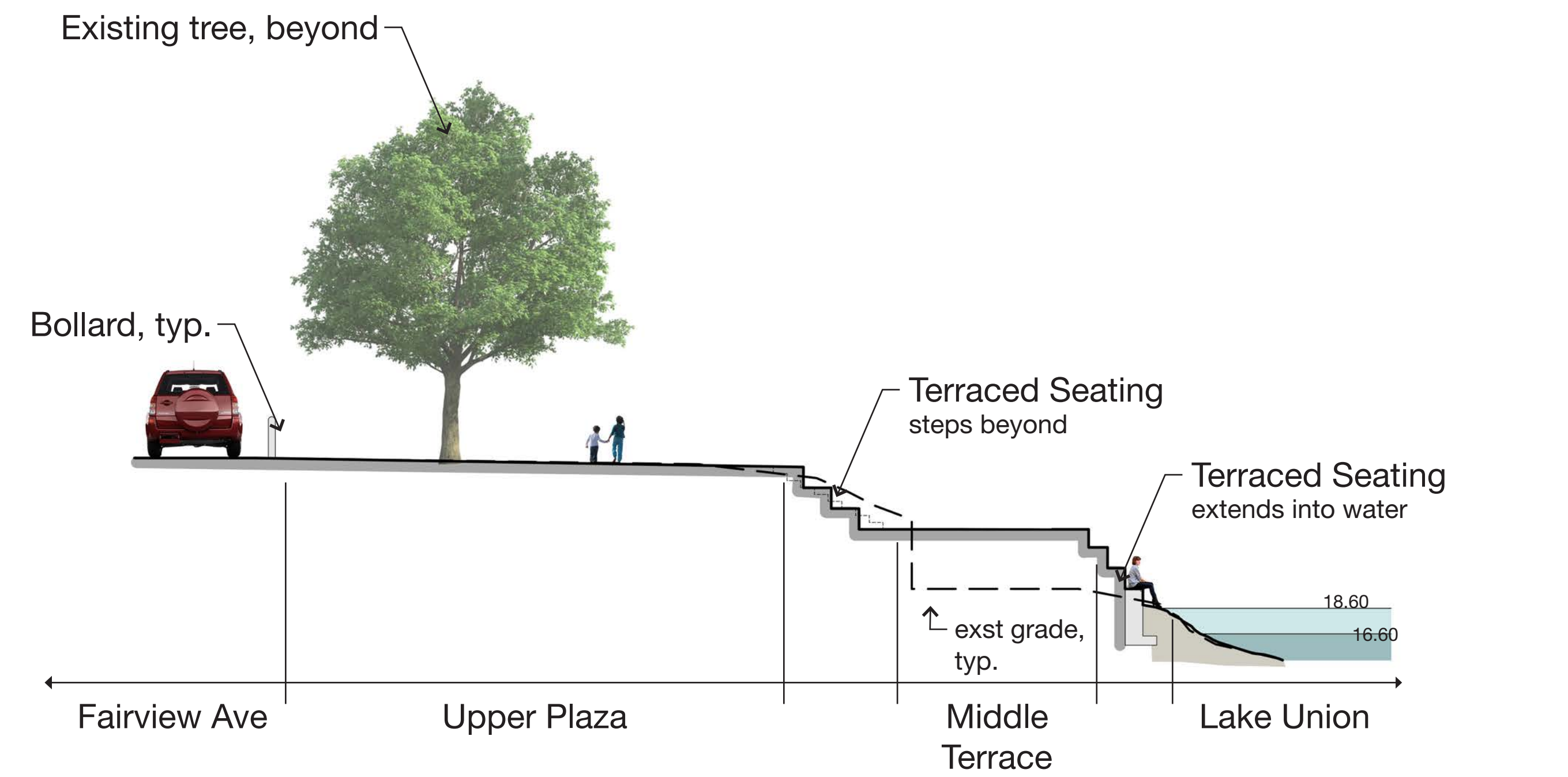
## Key Features

- Large welcome plaza; could offer interpretive exhibits, art, etc.
- Smaller arrival node near accessible parking
- Restored fish and wildlife habitat through log, boulder, and overhanging vegetation additions
- Many existing trees protected (14)
- Minimal trees removed (3)
- Direct stair route to lower level
- Multiple picnic areas
- Extensive restored planting area
- One (1) accessible parking stall
- One (1) designated load/unload stall

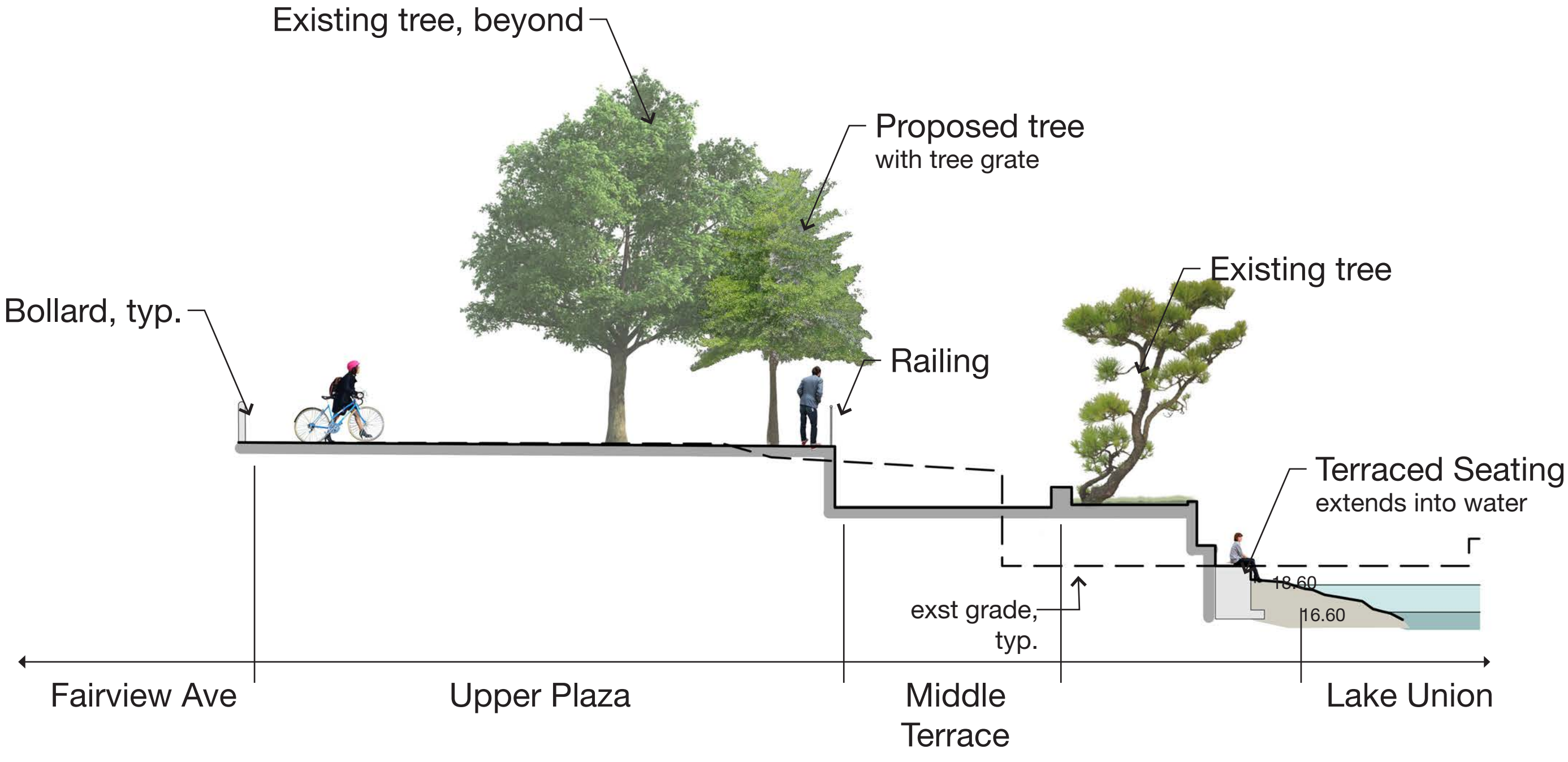




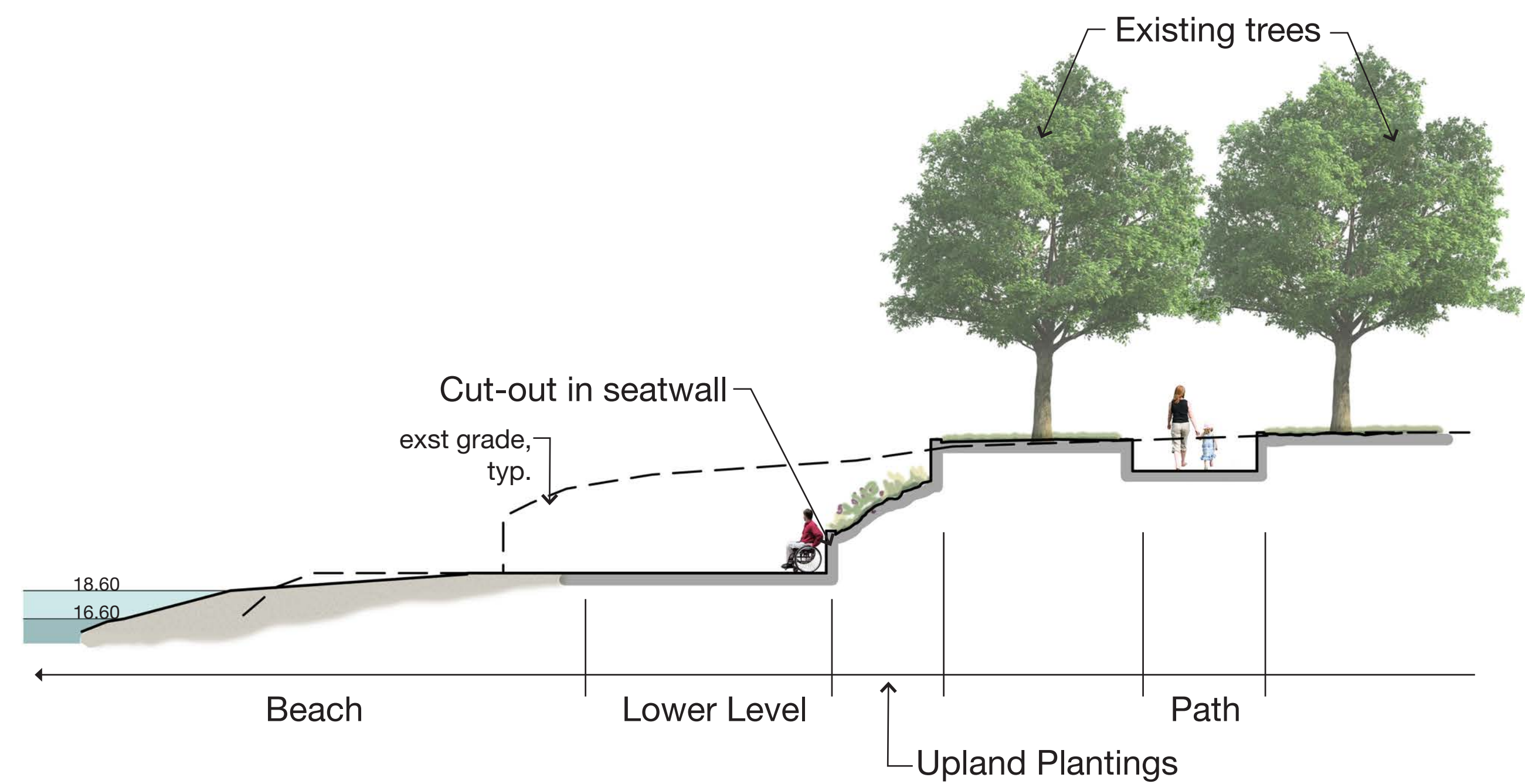
Sections



Section 1



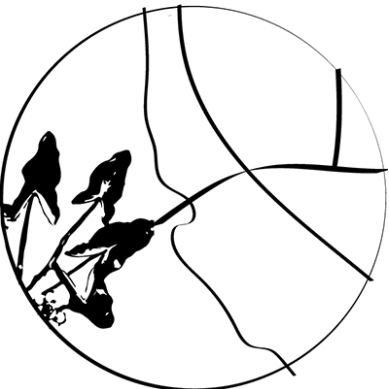
Section 2



Section 3

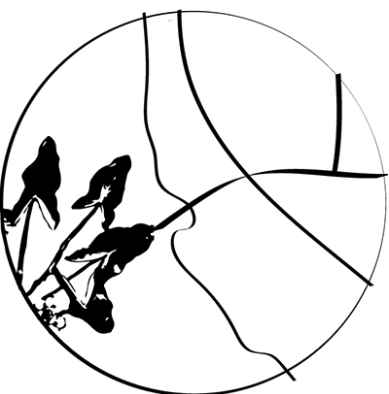
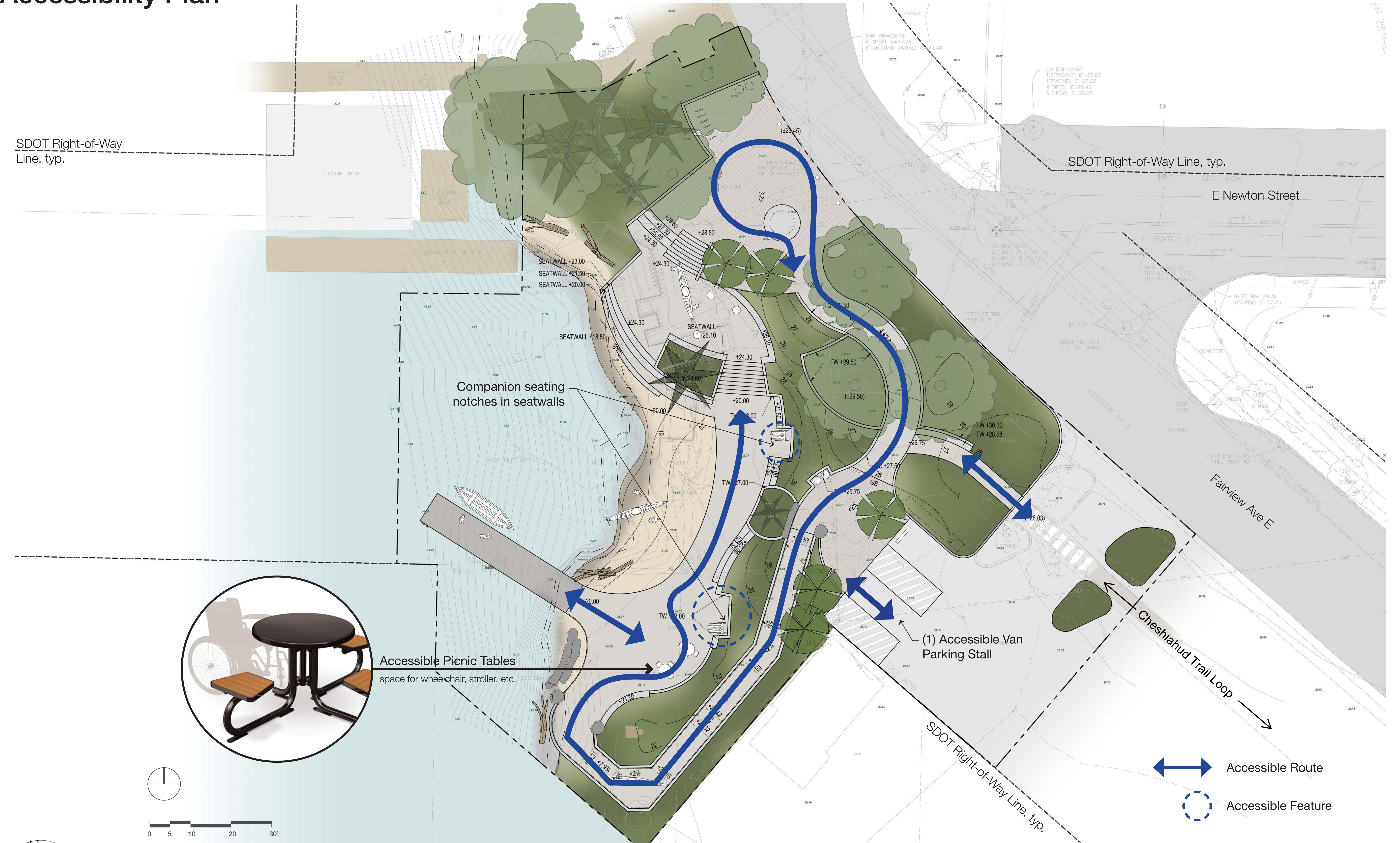


Key Plan



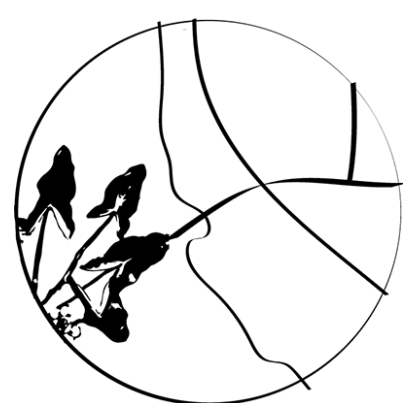


# Accessibility Plan





## Green Stormwater Infrastructure and Habitat Restoration



## Terry Pettus Park Renovation

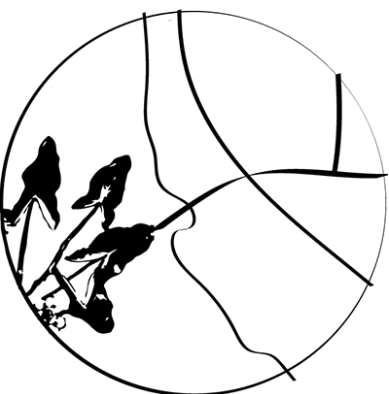
### Design Commission Meeting #2 - November 19, 2020



# Long-term Maintenance

SDOT Right-of-Way  
Line, typ.

- Use of Durable Materials
- Use of low-maintenance, climate-resilient, native plants





# Plant Palette

## Groundcover



Vanilla Leaf  
*Achlys triphylla*



Common Camas  
*Camassia quamash*



Kelsey's Dwarf Red-osier Dogwood  
*Cornus stolonifera 'Kelseyi'*



False Lily-of-the-Valley  
*Maianthemum dilatatum*

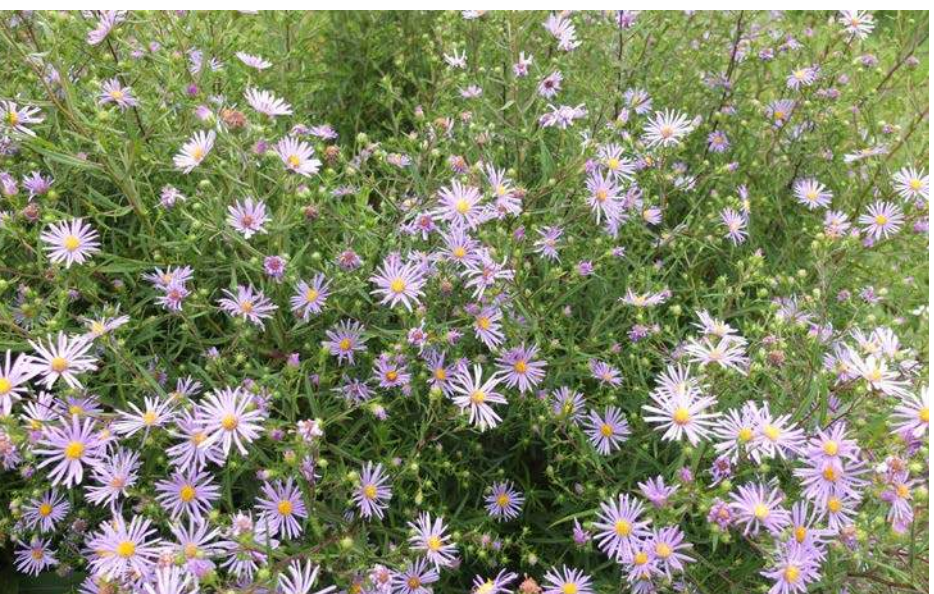
## Herbaceous Plants



Tufted Hairgrass  
*Deschampsia cespitosa*



Tall Manna Grass  
*Glyceria elata*



Douglas' aster  
*Aster subspicatus*



Goldenrod  
*Solidago canadensis*



Sword Fern  
*Polystichum munitum*

## Shrubs



Salal  
*Gaultheria shallon*



Pacific Ninebark  
*Physocarpus capitatus*



Red-flowering Currant  
*Ribes sanguineum*



Subalpine spirea  
*Spirea densiflora*



Hardhack  
*Spirea douglasii*

## Trees



Vine Maple  
*Acer circinatum*



Garry Oak  
*Quercus garryana*



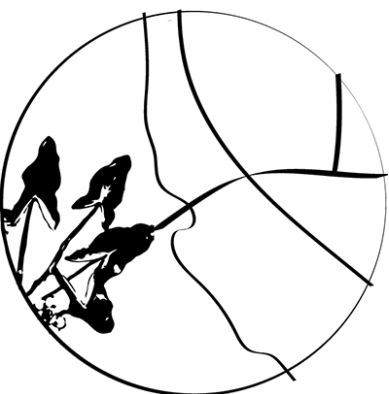
Shore Pine  
*Pinus contorta*

## Other Trees, tbd

Cascara  
*Rhamnus purshiana*

Willow  
*Salix spp.*

## Emergent Plants, tbd





# Site Materials

## Ground Surfacing



Concrete Paving



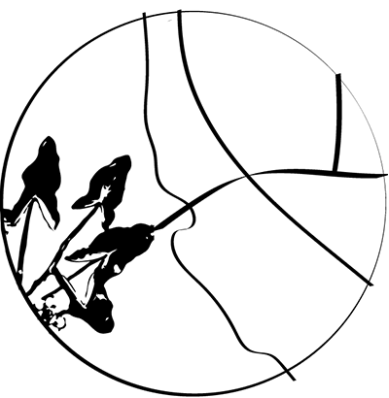
Permeable Paving



Light-penetrating Dock



Gravel Beach



## Seating and Site Features



Concrete Seatwall



Concrete & Wood Bench



Concrete & Wood Bench



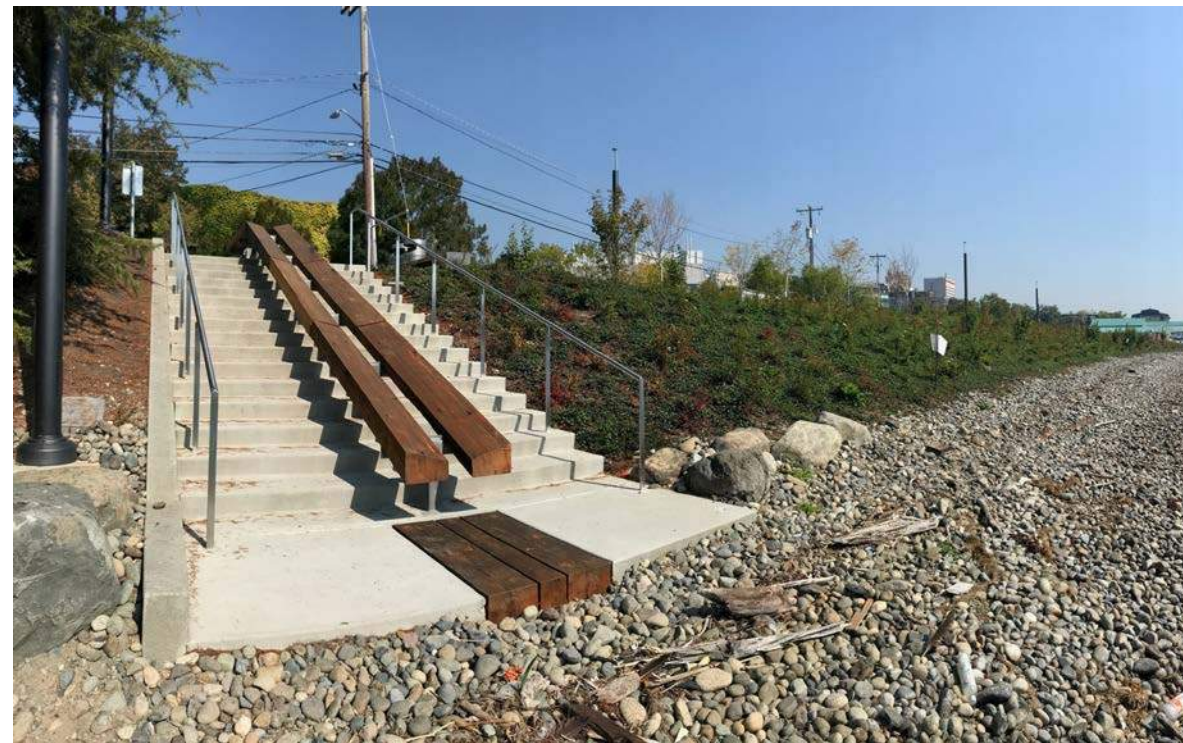
Osprey Nest Platform



Stone/Boulder Bench



Gabion with Bench



Hand-carry Boat Slide



Curved Gabion Seat Wall

## Retaining Walls



Concrete - Continuous Wall



Gabion



Curved Gabion Wall

## Bollards (at Upper Plaza)



Round



Boulder/Natural



Maritime



Granite Seating Bollard