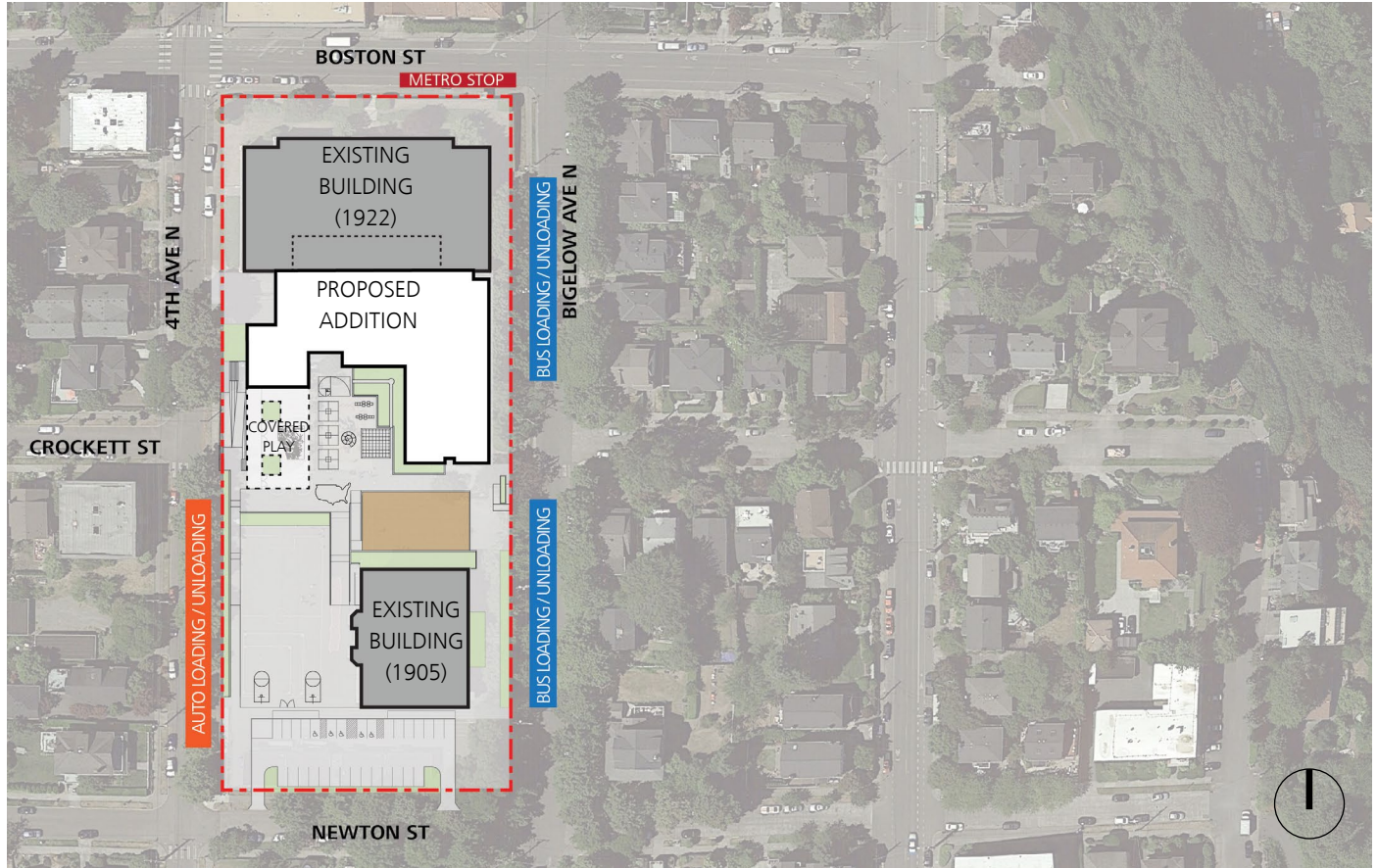


Queen Anne Elementary School

SEATTLE PUBLIC SCHOOLS | SEATTLE, WASHINGTON



DEPARTURE 1: LOT COVERAGE

SMC 23.51B.002.C.1

Departure Requested for 5% Additional Lot Coverage

DEPARTURE 2: PARKING REQUIREMENT

SMC 23.54.015 Table C*; Row N

*footnote 7

Departure Requested for 88 Parking Spaces

DEPARTURE 3: BUS LOADING REQUIREMENTS

SMC 23.51.B.002.I.4.a-c

Preferred Departure Requested for Bus Loading & Unloading on Bigelow Ave N (as shown in diagram above)

Alternate Departure Requested for Bus Loading & Unloading on 4th Ave N

Queen Anne Elementary School

SEATTLE PUBLIC SCHOOLS | SEATTLE, WASHINGTON



PROJECT OVERVIEW

Queen Anne Elementary School has an existing enrollment of approximately 420 students. The proposed project includes building an addition with 8 classrooms of permanent capacity and a gymnasium to provide a total capacity of 500 students to address current and projected elementary growth in Queen Anne and downtown Seattle, and reduce overcrowding at elementary schools in the area.

ANTICIPATED OCCUPANCY
Fall 2019

OWNER
Seattle Public Schools

ARCHITECT
Mahlum

LANDSCAPE ARCHITECT
Cascade Design Collaborative

CIVIL ENGINEER
LPD Engineering

STRUCTURAL ENGINEER
PCS Structural Solutions

MECH./ELEC. ENGINEER
Hargis Engineers

ACOUSTICAL CONSULTANT
A3 Acoustics

COST CONSULTANT
The Robinson Company