

University State/National Bank

City of Seattle Landmark Nomination

Larry E. Johnson, AIA



University National Bank 1925





9. Site Plan















Integrity



Significance

A. It is the location of or is associated in a significant way with an historic event with a significant effect upon the community, city, state, or nation.

A. It is the location of or is associated in a significant way with an historic event with a significant effect upon the community, city, state, or nation.

B. It is associated in a significant way with the life of a person important in the history of the city, state, or nation.



Harry Bonnell Lear (1881-1967)

PACIFIC NATIONAL BANK

Harry B. Lear, Chairman, Retires

BY DAN COUGHLIN

P-I Business and Financial Editor

Harry B. Lear, board chairman at Pacific National Bank, said to have served in Seattle banking longer than any other man, will retire effective immediately.

At the same time, a number of the bank's top officers were moved up to new posts.

CHARLES F. FRANKLAND, announcing the moves, himself became board chairman, up from president. He retains his dual status as chief executive officer.

Frankland said Lear will continue as a board member and as a member of several bank committees — despite his new "retired" status.

Other officials, moved up, are Thomas W. Paul, to become executive committee chairman, up from executive vice president; Paul W. Kitto, to become bank president and board member, up from senior vice president and main office manager, and Walter W. Hogue, to become senior vice president, and main office manager, up from vice president.

ALL OF THEM are key figures in banking, civic and business circles.

Frankland, president and



HARRY B. LEAR

CHARLES F. FRANKLAND

THOMAS W. PAUL

PAUL W. KITTO

WALTER W. HOGUE

chief executive officer since 1946, currently is a member of the board of directors of the Federal Reserve Bank of San Francisco and a director of American Mail Line, the Seattle Hardware Co. and the bank.

Lear, 82, has been associated with banking since 1900. He came to Seattle in 1906 and helped found the old **University State Bank** in that year. He served that bank, which became University National Bank, as president for years and became Pacific National's board chairman when University National consolidated with Pacific National.

PAUL HAS BEEN with Pacific National since 1946. Before coming here, he was a vice president and director of Everett First National Bank.

Kitto, the new president, has been with the bank since 1928, after his graduation from the University of Idaho. He has been a bank instructor and lecturer and is a past president of the Seattle chapter of the American Institute of Banking.

Hogue, with the bank for 26 years, is the son of a recently retired vice president and board member, Albert W. Hogue. He also is a past pres-

ident of the Seattle Chapter of the AIB.

Fund Granted To Aid Jobless

A federal grant of \$616,122 has been allotted to the Seattle-King County Economic Opportunity Board, Rep. Brock Adams announced yesterday.

The money will be used to help unemployed persons find jobs, finance the training and retraining of others, conduct a block-by-block survey of slum areas to determine the

y's Worth

Phony Lure To 'Big Pay' Position

A. It is the location of or is associated in a significant way with an historic event with a significant effect upon the community, city, state, or nation.

B. It is associated in a significant way with the life of a person important in the history of the city, state, or nation.

A. It is the location of or is associated in a significant way with an historic event with a significant effect upon the community, city, state, or nation.

B. It is associated in a significant way with the life of a person important in the history of the city, state, or nation.

C. It is associated in a **significant** way with a **significant** aspect of the cultural, political, or economic heritage of the community, city, state or nation.

MOHAI SHS 10398



Latona Bridge, ca. 1893

University of Washington Libraries CUR1703



Car #1, Rainier Power Railroad Company





University State Bank at second location 4134 University Way NE, ca. 1907

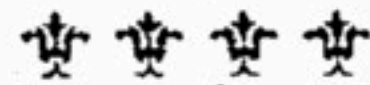




University State Bank at 4500 University Way NE, ca. 1913



Our past record is our
future promise. We
are a conservative Bank
for conservative people.



University State Bank

Oldest and Largest
Suburban Bank in Seattle

Our Business Confined
to University District



University District, ca 1925

20

NATIONAL CURRENCY

SECURED BY UNITED STATES BONDS DEPOSITED WITH THE TREASURER OF
THE UNITED STATES OF AMERICA1107
Treasury of the United States

20

E. Jones
Register of the TreasurySERIES OF
1929THE UNIVERSITY
NATIONAL BANK OF
SEATTLE

WASHINGTON

WILL PAY TO THE BEARER ON DEMAND
TWENTY DOLLARS

B001080A



JACKSON

REDEEMABLE IN LAWFUL MONEY OF
THE UNITED STATES AT UNITED STATES
TREASURY OR AT THE BANK OF ISSUE12
1
5
3

H.

B001080A

E. Jones
CashierSERIES OF
1929Harry B. Lear
President

20

TWENTY DOLLARS

20

University of Washington Libraries, SEA3650



University National Bank at 4500 University Way NE, ca. 1940

MOHAI, 1983. 10.2988.1, Webster & Stevens

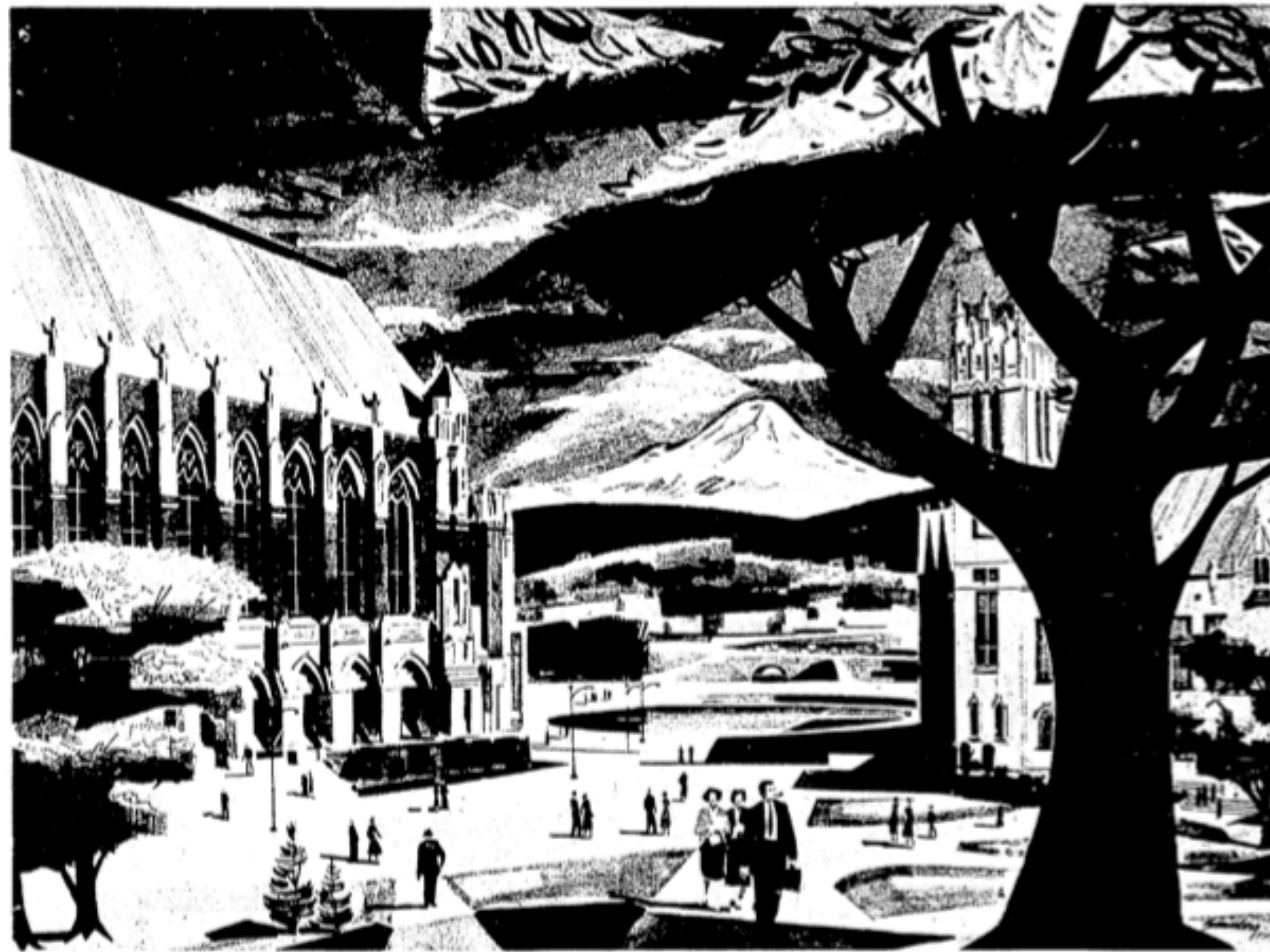


University State Bank, ca. 1921

University of Washington Libraries, SEA0347



Pacific National Bank, 1957



University of Washington Campus

a great university and...

THE CORDIAL BANK FOR BUSY PEOPLE!

THE UNIVERSITY OF WASHINGTON will soon open its doors for the Fall Quarter, thus commencing its 97th year.

Today, the University ranks as one of America's major educational institutions. It is one of the ten largest State universities in the nation with an enrollment of nearly 16,000 this Fall, and a faculty and administrative staff of approximately 2,000.

A landmark familiar to generations of students is the University Branch of the Pacific National Bank. Founded in

1906 as the University State Bank and later as University National Bank, it was organized to serve the needs of the campus and the surrounding community.

A strong growth in the economy of the University district and adjacent communities has created new opportunities for the Pacific National Bank to serve in its capacity as a commercial bank, the needs of business enterprises, and the individual.

We welcome your personal or business account.

Member F.D.I.C.



2nd at Marion



University



Wallingford



Bellevue



A. It is the location of or is associated in a significant way with an historic event with a significant effect upon the community, city, state, or nation.

B. It is associated in a significant way with the life of a person important in the history of the city, state, or nation.

C. It is associated in a **significant** way with a **significant** aspect of the cultural, political, or economic heritage of the community, city, state or nation.

A. It is the location of or is associated in a significant way with an historic event with a significant effect upon the community, city, state, or nation.

B. It is associated in a significant way with the life of a person important in the history of the city, state, or nation.

C. It is associated in a **significant** way with a **significant** aspect of the cultural, political, or economic heritage of the community, city, state or nation.

D. It embodies the distinctive visible characteristics of an architectural style, period, or method of construction.

Chicago Historical Society

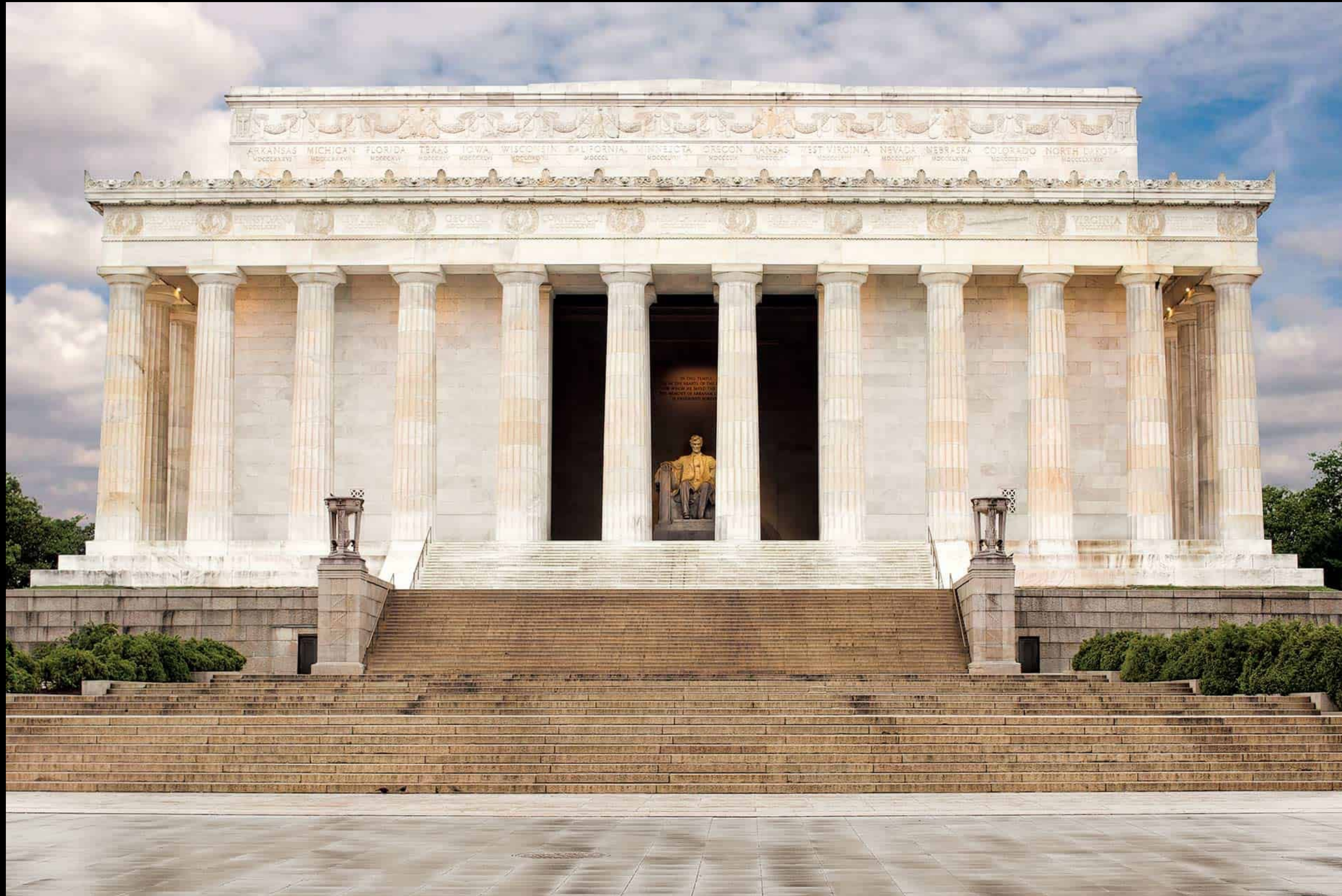


1893 Columbian Exposition, Grand Basin

University of Washington, Special Collections



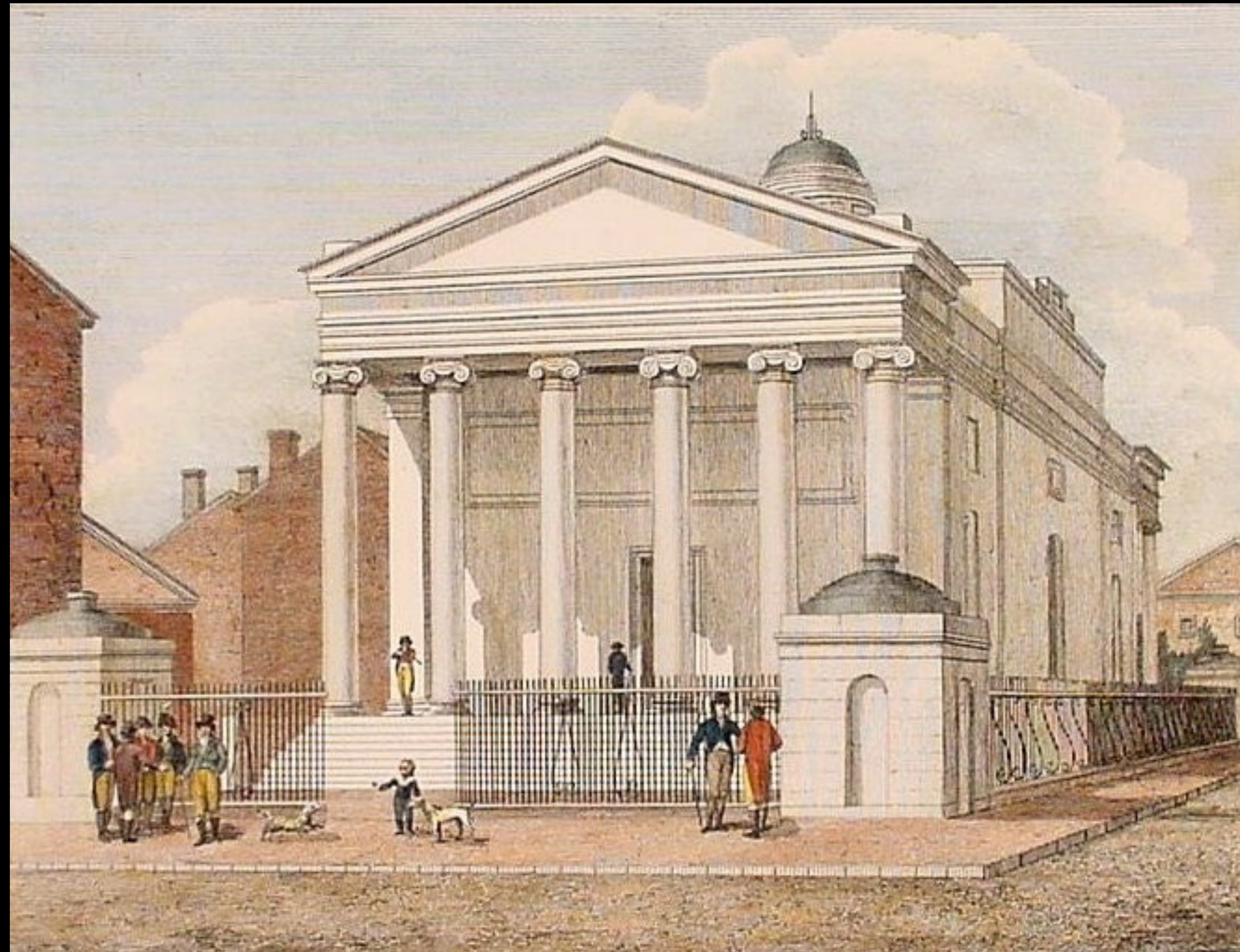
1909 Alaska-Yukon-Pacific Exposition, Court of Honor



Lincoln Memorial, Washington D. C. (1922, John Russell Pope)



Bank of California, Seattle (1924, John Graham Sr., City of Seattle Landmark)



Bank of Pennsylvania (1798, Henry Latrobe, demolished)



State Savings Bank, Detroit, Michigan (1900, McKim Mead & White)



State Savings Bank, Detroit, Michigan (1900, McKim Mead & White)

Mary L. Martin, Historic Postcard



Citizen's National Bank, Frederick, Maryland (1908)

MOHAI, 1983. 10.2988.1, Webster & Stevens



University State Bank, ca. 1921





National Bank of Commerce, 3601 Stone Way N (1962, Mandeville and Burge)

A. It is the location of or is associated in a significant way with an historic event with a significant effect upon the community, city, state, or nation.

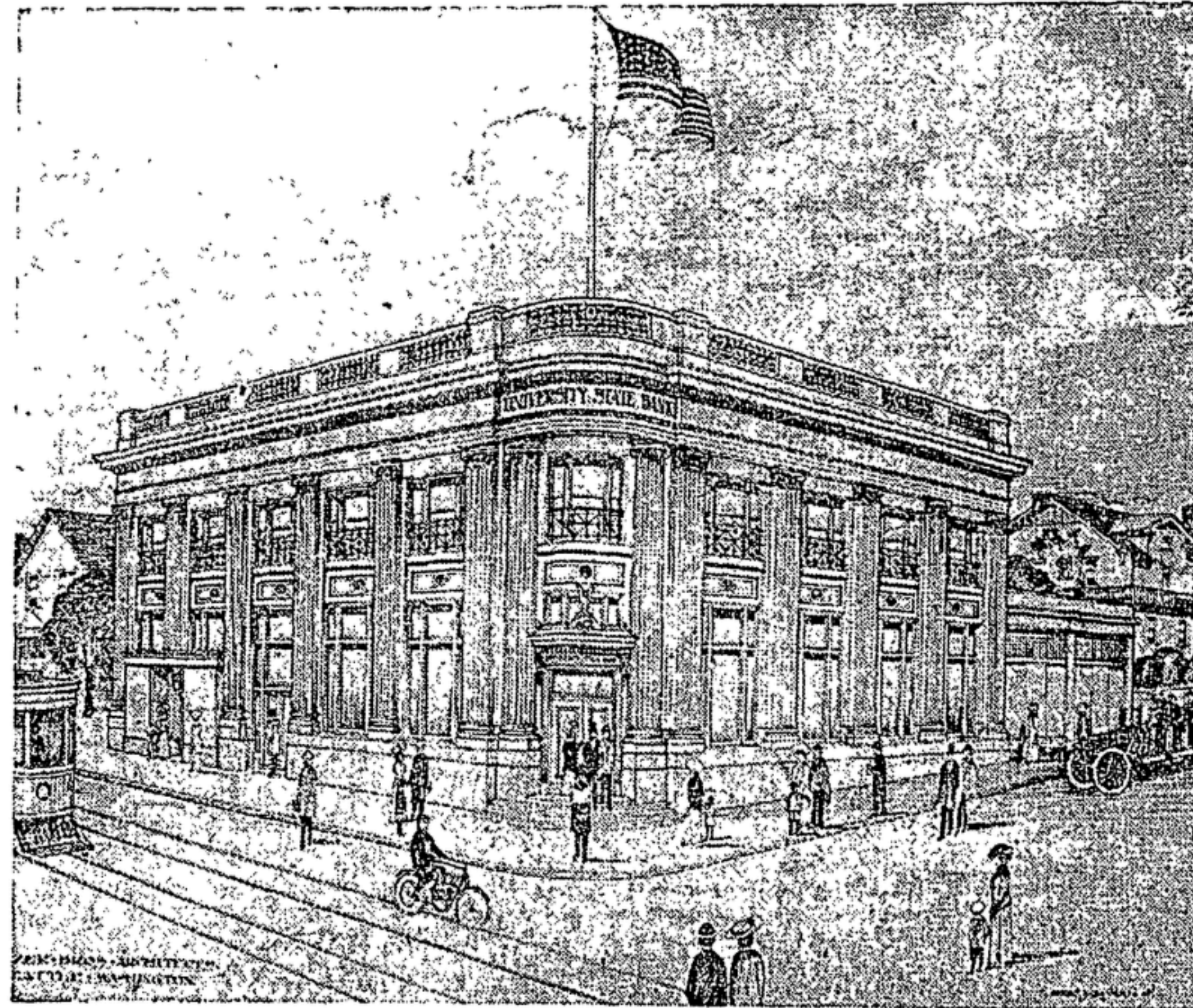
B. It is associated in a significant way with the life of a person important in the history of the city, state, or nation.

C. It is associated in a **significant** way with a **significant** aspect of the cultural, political, or economic heritage of the community, city, state or nation.

D. It embodies the distinctive visible characteristics of an architectural style, period, or method of construction.

- A. It is the location of or is associated in a significant way with an historic event with a significant effect upon the community, city, state, or nation.
- B. It is associated in a significant way with the life of a person important in the history of the city, state, or nation.
- C. It is associated in a **significant** way with a **significant** aspect of the cultural, political, or economic heritage of the community, city, state or nation.
- D. It embodies the distinctive visible characteristics of an architectural style, period, or method of construction.
- E. It is an outstanding work of a designer or builder.

Proposed Building for University State Bank



Plans are being prepared by Beezer Bros., architects, for the construction of a bank structure for the University State bank, which recently acquired a site at Fourteenth avenue northeast and Forty-fifth street.

The structure will be two stories in height, of brick and terra cotta construction, and will be one of the finest suburban bank buildings in the city. The lower floor will be occupied by the University State bank and for store

purposes. Offices will be located on the second floor.

Plans will be completed during next month and construction work started about June 1.

**PLAN-BUILDING-ARCHITECTURE
CITY OF MINNEAPOLIS**

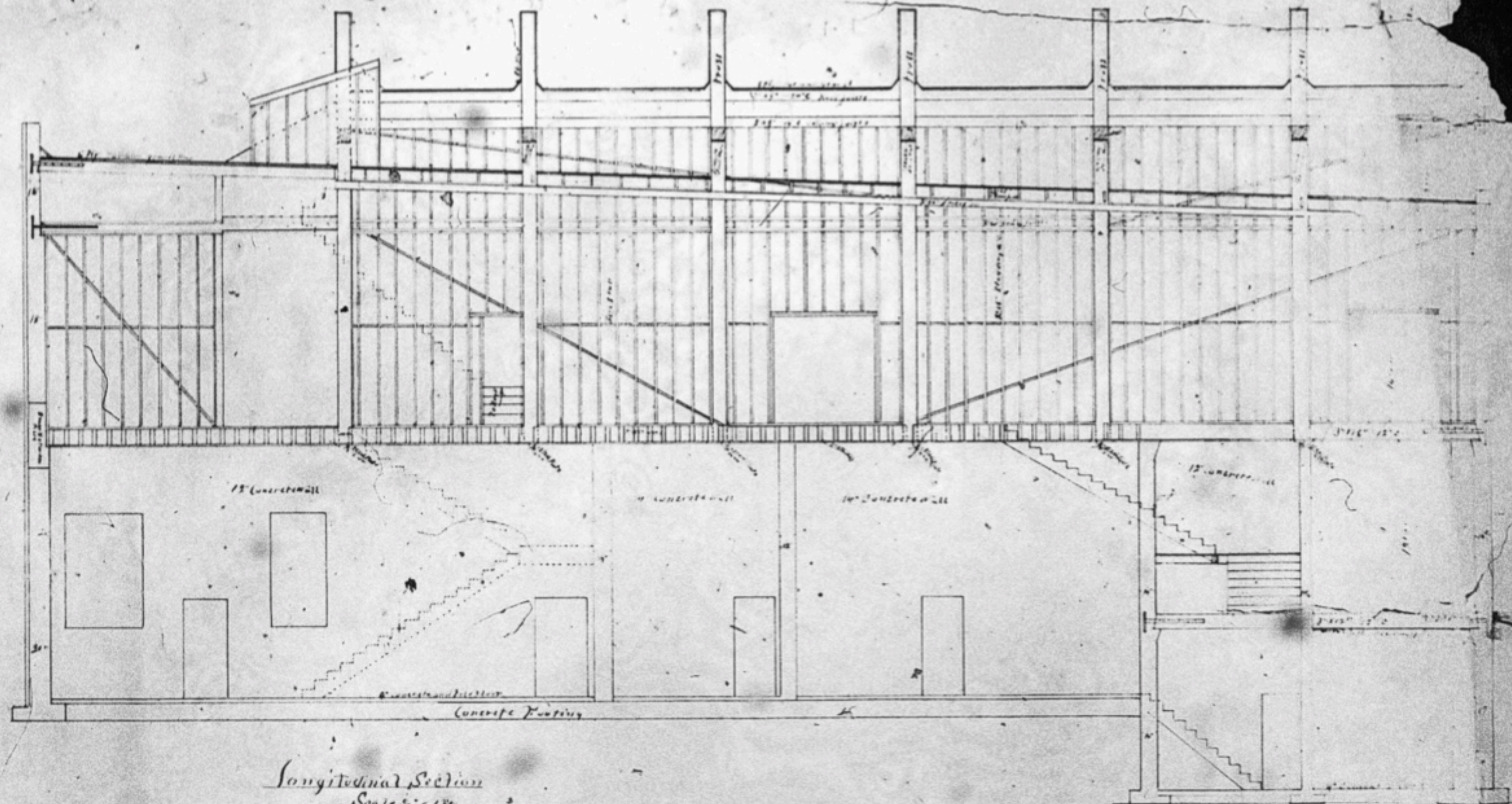
Plans are being prepared by Beezer Bros., architects, for the construction of a bank structure for the University State bank, which recently acquired a site at Fourteenth avenue northeast and Forty-fifth street.



INDIAN OIL COMPANY PLANNING BIG PLANT

Contracts are about to be let for the construction of the plant of the Indian Oil Company on ground adjoining the property of the Ford Motor Company, at Westlake Avenue and West Galer Street. The plant will consist of a one-story concrete warehouse, 30x90 feet, a two-story office building, and storage tanks, and will cost approximately \$15,000.

Building of the two-story concrete store and hall building for the University State Bank at 4500 to 4506 Fourteenth Avenue Northeast, to cost \$80,000, will commence this week. **George Hughes** has the contract and a permit for the structure has been issued.



Longitudinal Section

Scale $\frac{1}{4}'' = 1 \text{ ft.}$

Geo. Haynes Archd.

Concrete Footing

Longitudinal Section

Scale 1/4" = 1 ft.

Geo. Hayes Archt.



M. J. Benzer



Louis Beezer



Baker-Boyer Bank, Walla Walla (1911, Beezer Brothers)



Oliver D. Fisher residence, Seattle (1908-09, Beezer Brothers)



Blessed Sacrament Church, Seattle (1909-25) and Rectory (1913-14) (Beezer Brothers)



Bishop O'Dea School, Seattle (1923-24, Beezer Brothers)



S. Graham Building (1919-20, Doyle & Merriam, now Doyle Building, City of Seattle Landmark)

SPEED
LIMIT
25

2
Hours Max
Pay 8 am-4 pm Mon-Fri
Location: 87940

BANK



George and Lulu Sylvester House (1921, George Hughes, 3340 Cascadia Avenue, Seattle)

- A. It is the location of or is associated in a significant way with an historic event with a significant effect upon the community, city, state, or nation.
- B. It is associated in a significant way with the life of a person important in the history of the city, state, or nation.
- C. It is associated in a **significant** way with a **significant** aspect of the cultural, political, or economic heritage of the community, city, state or nation.
- D. It embodies the distinctive visible characteristics of an architectural style, period, or method of construction.
- E. It is an outstanding work of a designer or builder.

- A. It is the location of or is associated in a significant way with an historic event with a significant effect upon the community, city, state, or nation.
- B. It is associated in a significant way with the life of a person important in the history of the city, state, or nation.
- C. It is associated in a **significant** way with a **significant** aspect of the cultural, political, or economic heritage of the community, city, state or nation.
- D. It embodies the distinctive visible characteristics of an architectural style, period, or method of construction.
- E. It is an outstanding work of a designer or builder.
- F. Because of its prominence of spatial location, contrast of siting, age, or scale, it is an easily identifiable feature of its neighborhood or the city and contributes to the distinctive quality or identity of such neighborhood or city.



3. Site aerial



4. Viewing northeast from NE 45th Street and University Avenue NE



5. Viewing north from University Avenue NE near NE 40th Street



6. Viewing south from University Way NE near NE 50th Street



7. Viewing east from NE 45th Street near Brooklyn Avenue NE



8. Viewing west from NE 45th Street near 15th Avenue NE



- A. It is the location of or is associated in a significant way with an historic event with a significant effect upon the community, city, state, or nation.
- B. It is associated in a significant way with the life of a person important in the history of the city, state, or nation.
- C. It is associated in a **significant** way with a **significant** aspect of the cultural, political, or economic heritage of the community, city, state or nation.
- D. It embodies the distinctive visible characteristics of an architectural style, period, or method of construction.
- E. It is an outstanding work of a designer or builder.
- F. Because of its prominence of spatial location, contrast of siting, age, or scale, it is an easily identifiable feature of its neighborhood or the city and contributes to the distinctive quality or identity of such neighborhood or city.

