

# Seattle Center DuPen Fountain Health Code Signage and Alki Restroom Signage Concepts

Certificate of Approval Application

*November 25, 2020*

Included in submittal:

- Design and plan for signs required by King County Dept. of Public Health for proposed DuPen artwork interactive water feature
- Concept alternatives for painted signage on five east-facing bays and two entry alcoves on Alki Restrooms exterior
- Concept for wayfinding signage above stairwell between Alki Restrooms and International Fountain Pavilion building.



## Table of Contents

Site Plan

Floor Plan

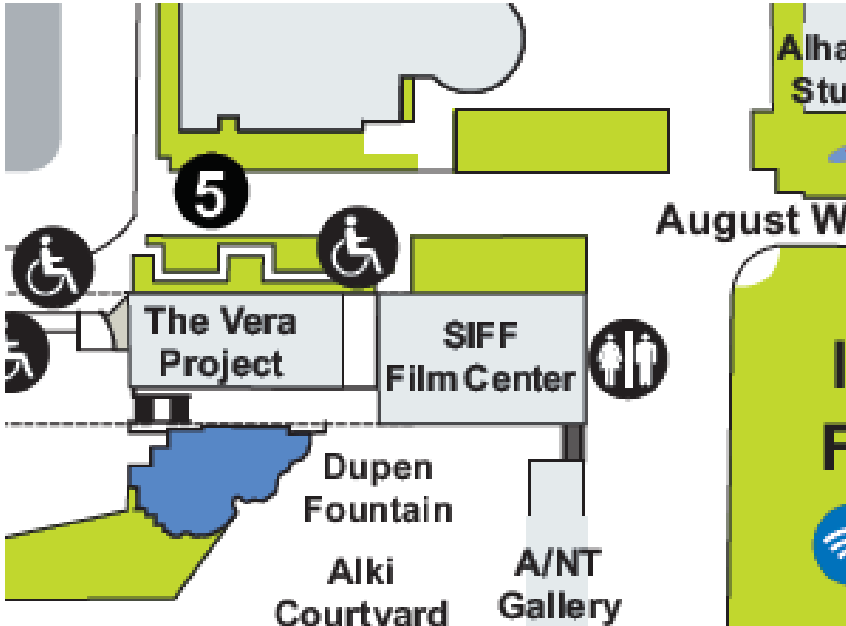
Proposal 1 – DuPen Health Code Signage

- Plan of Proposed Restoration
- Required Signage Plan
- Water Features Rule Sign Details
- Restroom Directional Signage Details

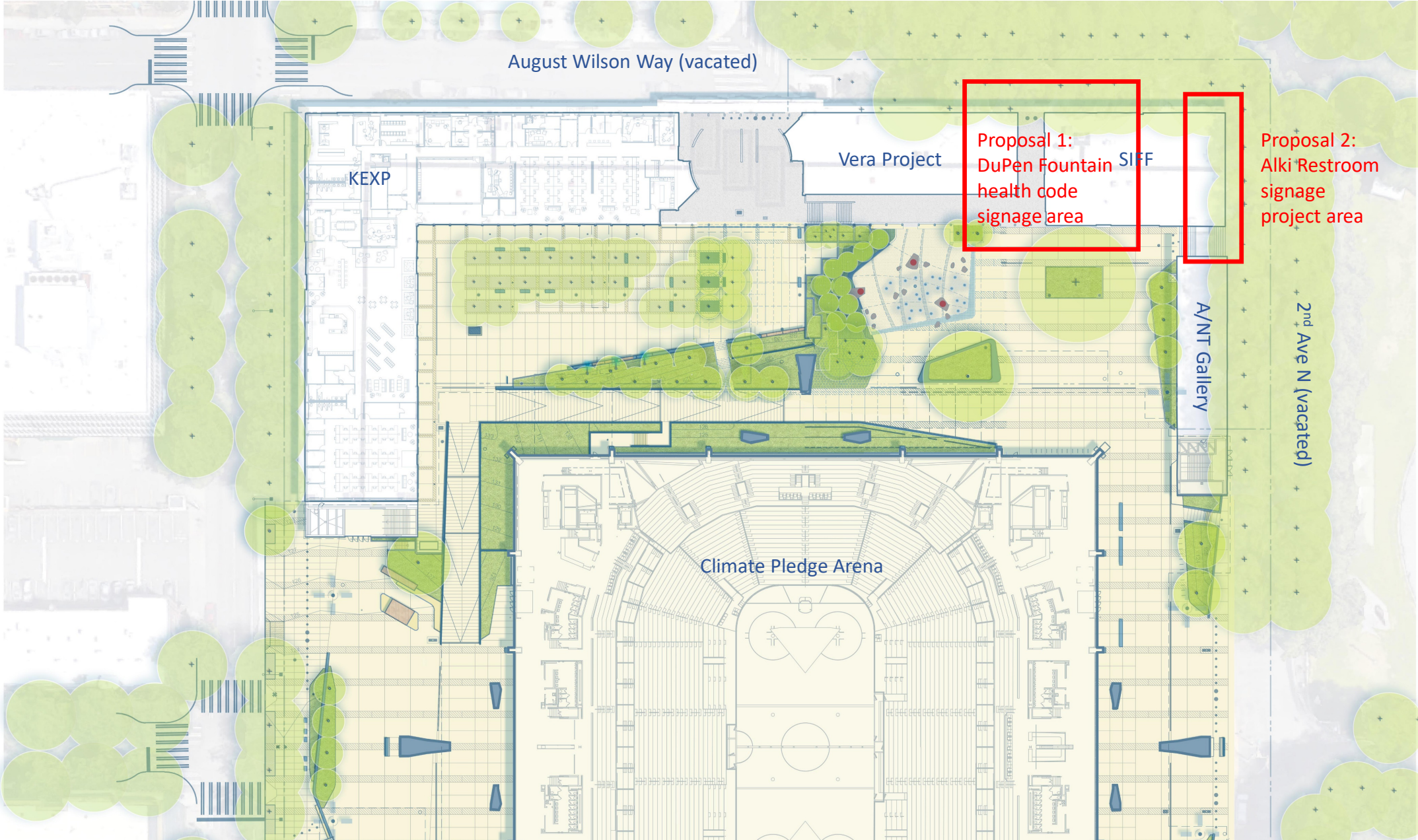
Proposal 2 – Alki Restroom Signage Concepts

- Elevations
- Exterior Details
- Signage Concepts
- Construction Details

# Site Plan: Lower Northwest Rooms courtyard and breezeway



# Floor Plan



# Proposal 1 – DuPen Fountain Health Code Signage

Seattle Center has been working with the Landmarks Preservation Board to review a proposal for reimagining and restoration of the Fountain of Creation by Everett DuPen. The proposed project requires a variance from King County Public Health (KCPH) to allow a slightly longer distance between the water feature and the closest public restroom in the lower level of the Alki Room. The current code requires a restroom to be located within 100 feet of a spray pad or pool. The nearest public restroom is the Alki Restrooms, which is located within 190 LF to the men's and 250 LF to the women's.

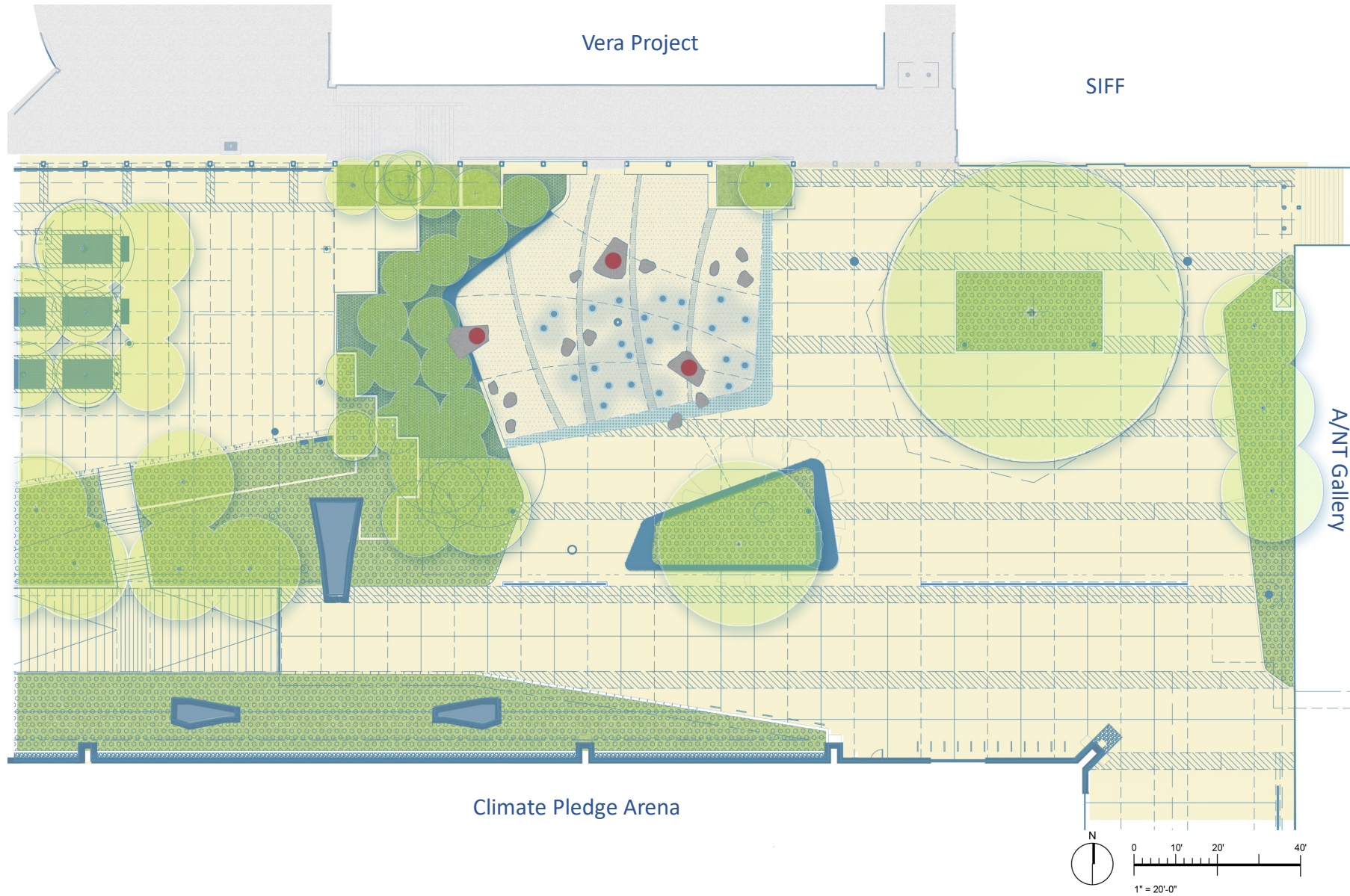
For ADA, the route is 360 LF to the men's and 300 LF to the women's restrooms.

In order to consider this variance, KCPH requires signage as shown in this proposal to satisfy health and safety concerns. The final font and style will be complementary with the surrounding signage plans.



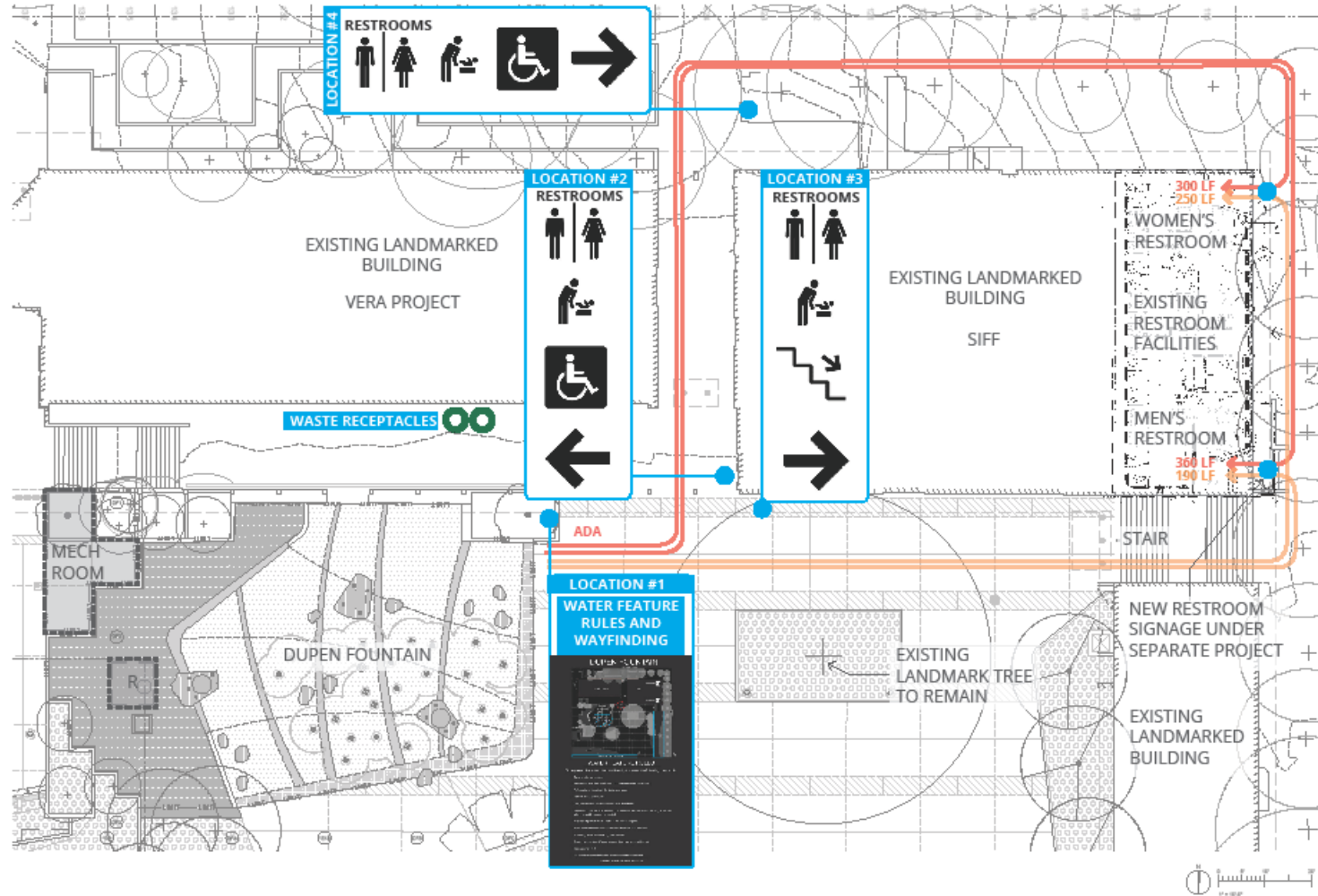
# DuPen Fountain Restoration – Proposed

*From Landmarks ARC briefing, 10/2/2020 -- for context only*



# KCPH Required Signage Plan:

## RESTROOM DIAGRAM | King County Public Health - Code Requirements - Restroom Facility Travel Distance and Accessibility



### SIGN MOUNTING NOTES:

Sign Location #1 (map and rules): Assume metal plate sign mounted in front of the planter wall on a flush with pavement concrete footing.

Sign Location #2/3: Assume metal plate signs, mechanically attached to ~2"-3" flange/arms anchored to facade.

Sign Location #4: Assume metal plate sign mounted in planter on two narrow steel posts. Specific location based upon site lines and avoiding tree roots. The intent is for this to not be attached to the Landmarked building structure.

Section View – Water Feature Rules Sign:



DUPEN FOUNTAIN-  
SITE SECTION LOOKING WEST

## Water Feature Rules & Vicinity

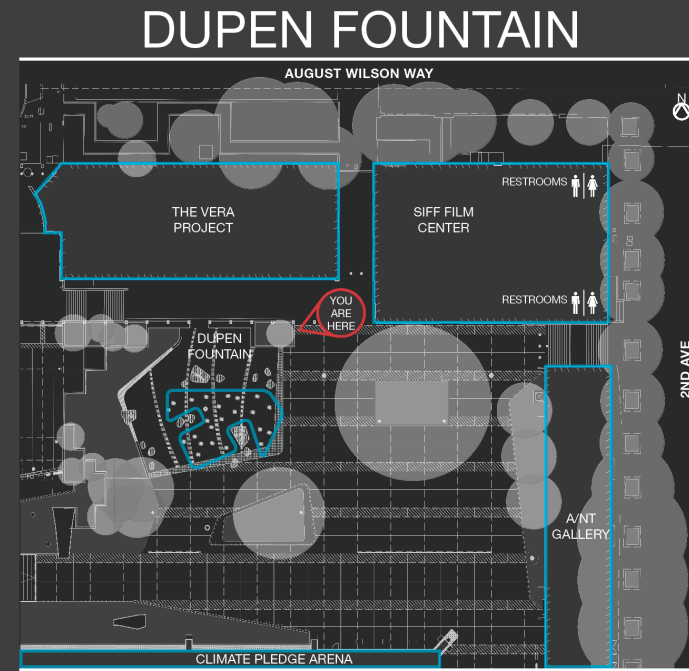
### Map Sign Details:

King County Public Health is requiring a vicinity map to help direct visitors should they need the restroom. Also, the code requires rules to be posted for use of the interactive water feature.

The water feature rules and vicinity map sign would be mounted in front of the planter wall on a flush with pavement concrete footing. This keeps it out of the planter for install and maintenance ease and will not relying on the planter for strength.

Option 2 would be a new footing inside the south face of the planter, using the planter to protect the sign. Footing would be ~2" below top of existing footing.

This signage is designed as a simple rectangular shape with a color scheme matching that of the proposed wayfinding signs around the Climate Pledge Arena plazas



## WATER FEATURE RULES

To help keep the water clean and healthy for users, the following rules apply:

- Report all fecal and vomitus releases to Seattle Center Customer Service.
- No food, drink, gum or glass containers in the spray jet area.
- No dogs or pets permitted in spray jet area.
- Spray feature water is recirculating so do not drink the water.
- Young children must use the restroom prior to entering spray pad area.
- Those wearing diapers must have a clean diaper with a tight-fitting protective covering prior to entering the spray pad area.
- Diapers must be changed in the restroom.
- Public restrooms available. Follow signs.
- People with communicable diseases or anyone who has been ill with vomiting or diarrhea within the past 2 weeks are prohibited.
- Bikes, rollerblades and skateboards are not allowed near the water.
- No running, water fights or rough play allowed.
- Children younger than 12 must be supervised by a responsible adult.
- No drugs or alcohol in the spray jet area.
- Failure to follow rules may result in exclusion from the premises.



## Building-mounted Signage:



The building mounted, code required restroom signage provides information on the two ways to reach the Alki Restrooms. Font and icons are consistent with Seattle Center identity guidelines. These signs would be metal plate, attached to ~2-3 inch flange/arms that would be anchored to façade with nail-in anchors. The nail holes can be patched in the future, if needed.

Post-mounted signage along August Wilson Way:



Since the Alki Restrooms are not visible from this location along August Wilson Way, the directional signage will provide clear information to direct visitors along the ADA route. The sign would ideally be on a steel post in the planter near the tress, specific location sited based upon site lines, and avoiding tree roots. The intent is for this to not be attached to structure that is Landmarked.

# Proposal 2 – Alki Restroom Signage Concepts

## Background

Public restrooms are a critical part of the infrastructure supporting Seattle Center’s arts and cultural offerings to large crowds of visitors. The Arena project required demolition of the Restroom Pavilion, built in 2000 to serve the International Fountain and the interior of the campus. To replace it, Seattle Center renovated and reopened older restrooms along vacated 2<sup>nd</sup> Ave. N., below the Alki Room/SIFF. These facilities, however, suffer from a lack of visibility. Temporary banners (see image) have been very helpful but are not satisfactory long-term solutions.

Long-term functionality requires a repurposing of the façade of the building to create a legible destination. As an unfortunate but necessary first step, Seattle Center worked with the Office of Arts and Culture and the Public Art Advisory Commission to deaccession “Pool” by Randy Hayes. The artwork, commissioned in 1985, comprised a group of swimmers cut out of marine plywood and painted in oils, installed behind a glass storefront. Arts and Culture staff is pursuing reinstallation of the painted figures in new locations. The concrete façade, which was painted blue-gray for the artwork, is now exposed.

Seattle Center worked with a local graphic design firm to develop concepts for new painted signage that would boldly identify the facility. Goals for the design included:

- Increased legibility for Alki Restrooms with signage that works with the historic façade
- Wayfinding and increased visibility for Northwest Courtyard tenants and programming
- Increased interest on a blank wall, with something that is durable and easy to maintain
- Consideration of future signage needs for Climate Pledge Arena and ST3



**Alki Restrooms Elevations:**

**1st bay**  
110" wide, 92" high

**2nd bay**  
110" wide, 98" high

**3rd bay**  
110" wide, 98.5" high

**4th bay**  
110" wide, 101" high

**5th bay**  
110" wide, 105" high

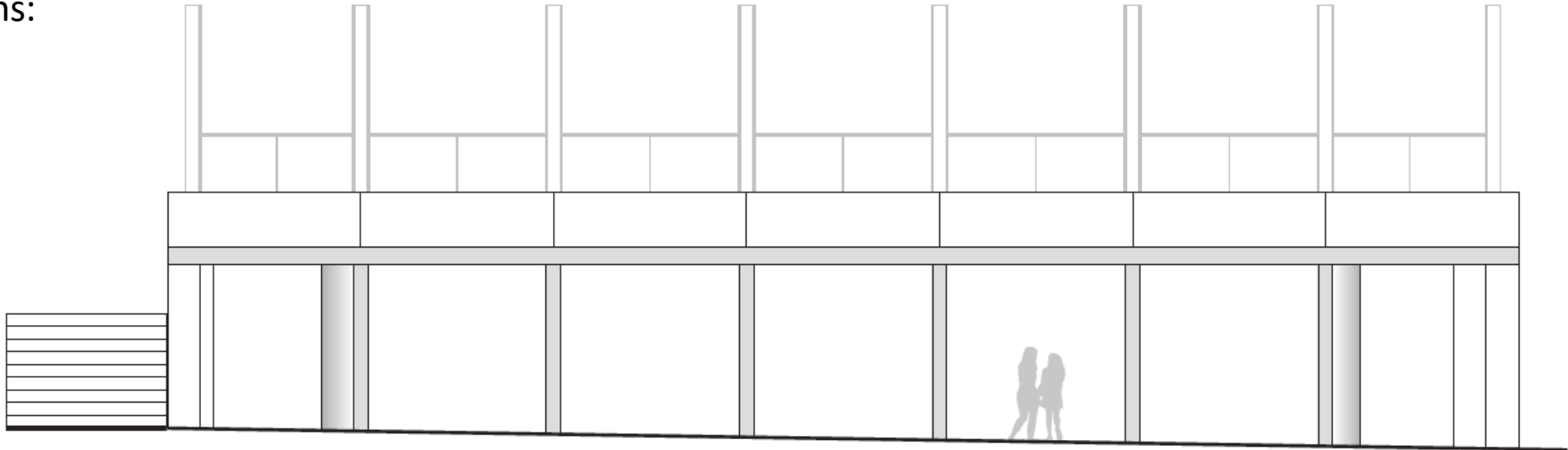
**Depth of each bay**  
10"

**Space between each bay**  
10"

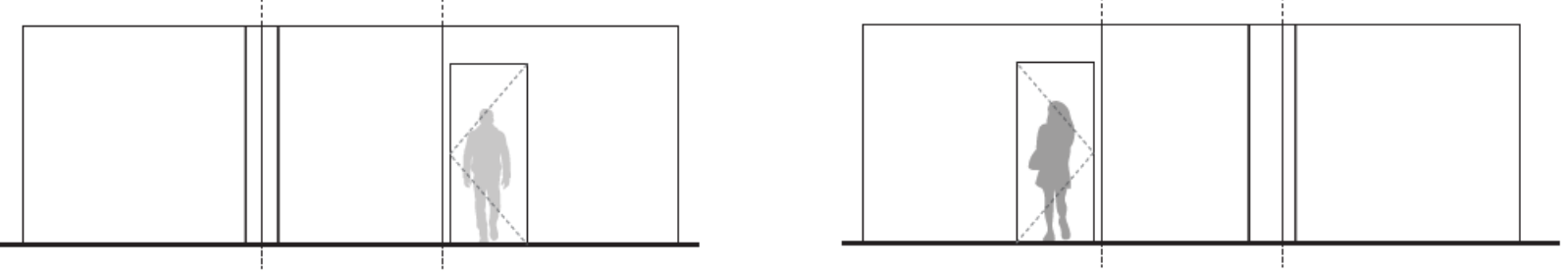
**Overhang on each bay**  
25"

**Women's bathroom entrance opening**  
99" wide

**Men's bathroom entrance opening**  
103"



Alki Room ground floor east face and breezeway stairs



Flattened view of restroom entry alcoves



Views of Alki Restrooms in context of Seattle Center campus



Condition in April 2020, before *Pool* removal



Alki Restrooms - current condition with painted figures and glass storefront removed



## Existing Conditions - Signage:



Alki Room/SIFF – SW corner



Alki Room/SIFF – south side



Breezeway steps from vacated 2<sup>nd</sup> Ave N to  
DuPen Fountain/NW courtyard



Alki Restrooms – entry alcove



Alki Restrooms – entry alcove



Alki Restrooms front face - detail

## Existing Conditions - Signage:



Intl. Fountain Pavilion - A/NT Gallery east side



Intl. Fountain Pavilion - A/NT Gallery east side



Vera Project – west side



East-west walkway along south side of Vera Project



Vera Project – NW corner

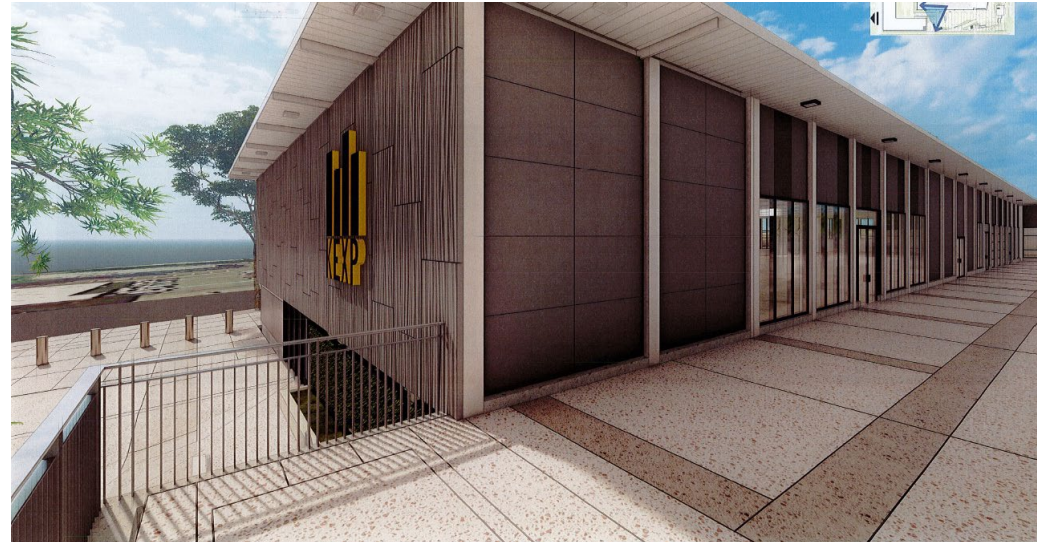


Vera Project – south side

Existing Conditions - Signage:



KEXP east side



New south-facing KEXP signage, as approved by LPB 5/1/2019



KEXP south side



Early studies:



Alternative Concept 1:



Alternative Concept 2:



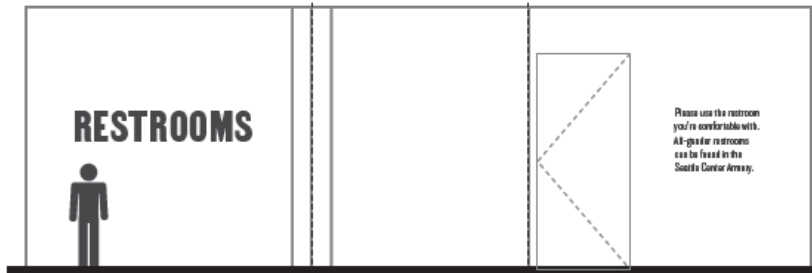
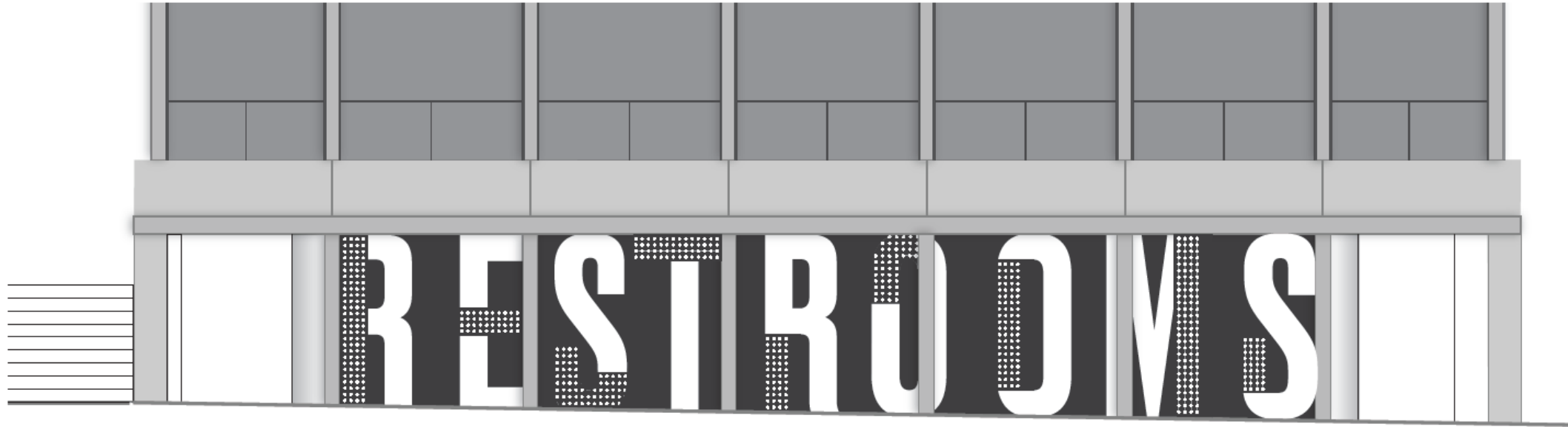
Alternative Concept 2b – preferred option:



Alternative Concept 2b – preferred option:

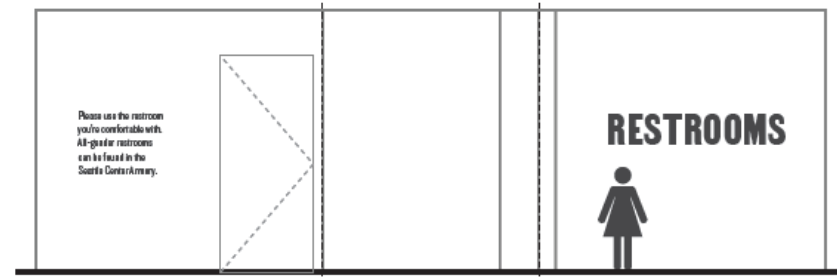


Alternative Concept 2b – preferred option:



Flattened Elevation: Men's Entrance

Signage treatment will consist of black painted background, white painted lettering on five front-facing bays, and white painted background with black lettering and images in entry alcoves. All will receive anti-graffiti top-coat treatment.



Flattened Elevation: Women's Entrance

## Stairwell wayfinding:



Current condition



Alternative concept presented by design consultant. However, this has raised maintenance and safety concerns.



This earlier design concept shows our proposed orientation, placement and approximate size of new signage to replace the existing temporary banner. The color scheme and font, however, will be consistent with the restroom signage.

## Sign attachment methods:

Blade signs above the restroom entry alcoves would be attached with a nail-in anchor. Upon removal, the hole can be filled, and touch-up paint applied.



This sign can be attached to the existing horizontal and vertical metal beams and the concrete on each end. Upon removal, attachment points can be patched to restore the finish.