

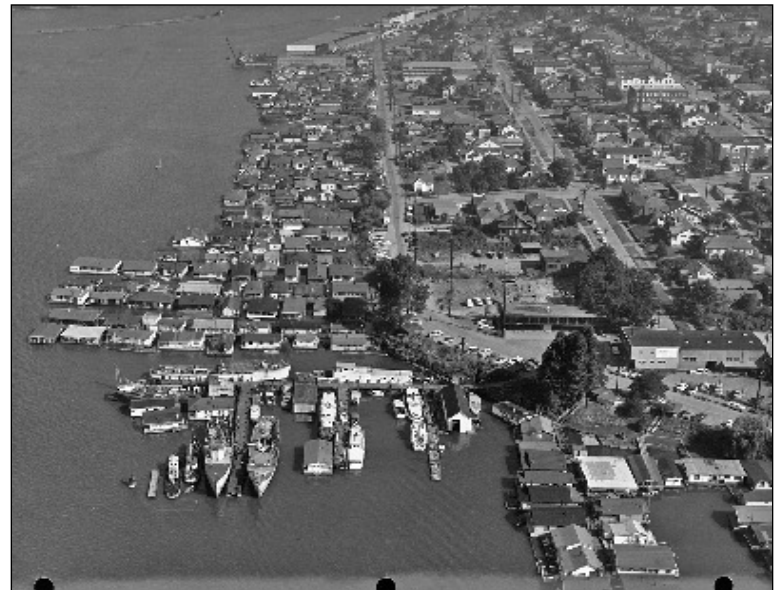
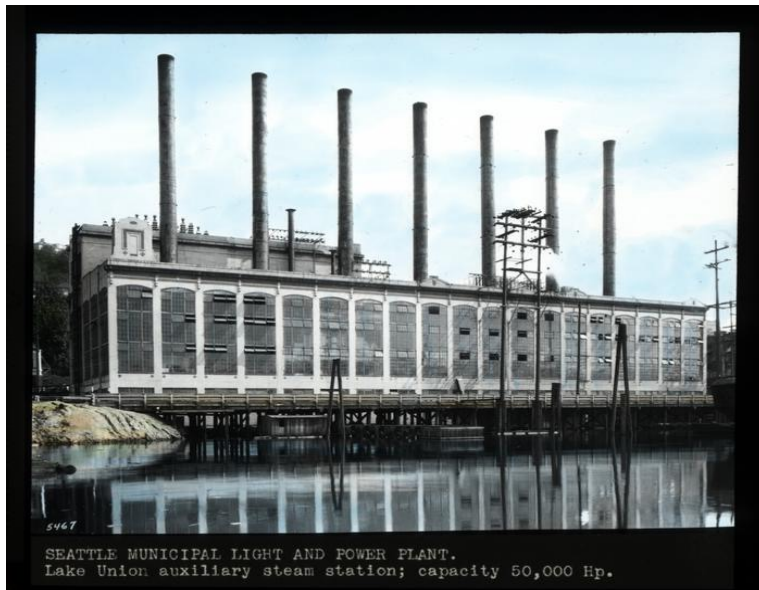


**Steinhart Theriault & Anderson
Architects Office
1264 Eastlake Avenue E
Seattle Landmark Nomination**

May 4, 2022

**wewa
docomomo**

A historic, mixed-use urban neighborhood, defined by transportation routes and lakeshore industry



The Modern freeway and transformation of the city and the neighborhood



1936



2021



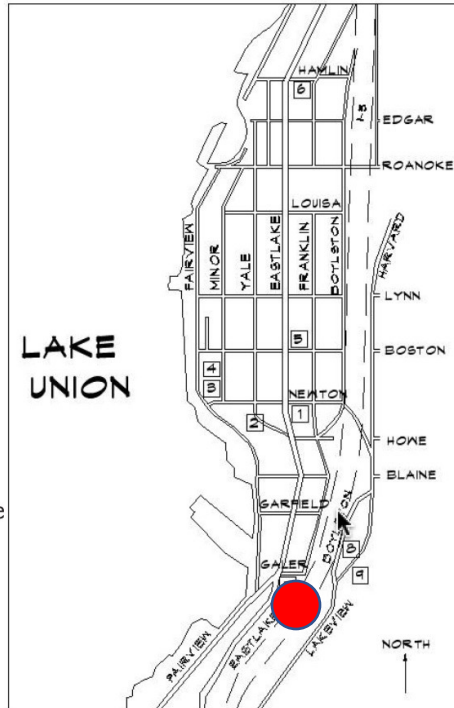


The neighborhood's unique identity

The Tour

1. *Elmec Building
1920 Eastlake Ave. E.
(interior open)
2. *Pacific Architect & Builder's
(United Indians of All Tribes)
1945 Yale Place E.
(interior open)
3. Architect's Office Building
2000 Minor Ave. E.
4. Lake Union Community
Psychiatric Clinic
2009 Minor Ave. E.
5. *Asian Gallery/Architect's Office
200 E. Boston
(interior open)
6. *The Castlewood Apartments
2717 Franklin Ave. E.
(interior open)
7. Architect's Office Building
1264 Eastlake Ave. E.
8. Lakeview Blvd. Apartments
1555 Lakeview Blvd.
9. *Egan House
1500 Lakeview Blvd.
(interior open)

* indicates open interior



map is not to scale

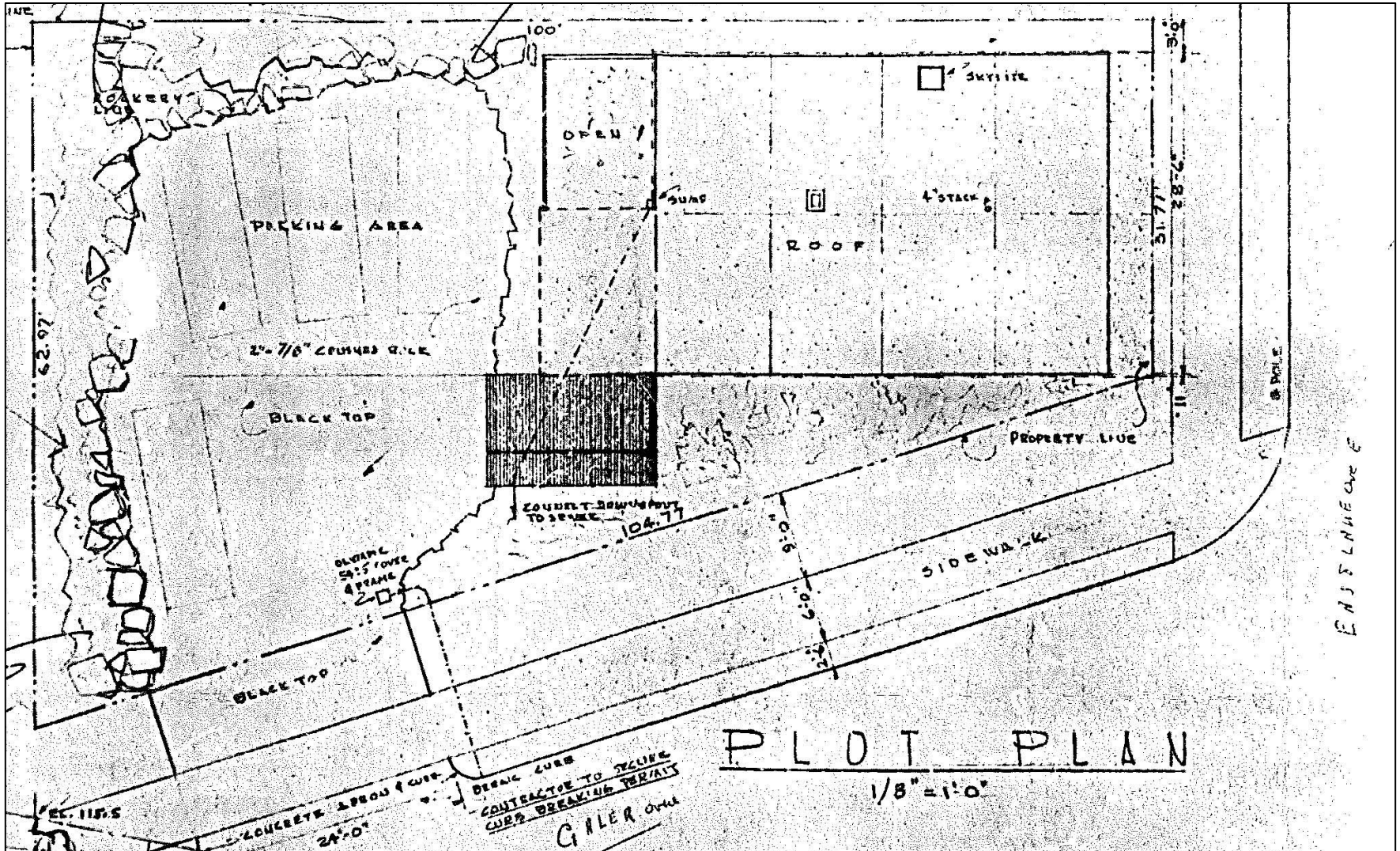
About DoCoMoMo

DOCOMOMO is an international organization with regional groups throughout the U.S., Europe and South America. The mission of our local chapter, organized as a committee of Historic Seattle, is to build appreciation and public awareness of the significance of Modernist buildings and structures in Western Washington through education, documentation, and advocacy. DOCOMOMO meets monthly to discuss topics in Modern architecture, design and preservation, and to arrange small tours of post-war era buildings. The committee is open to all members of Historic Seattle.

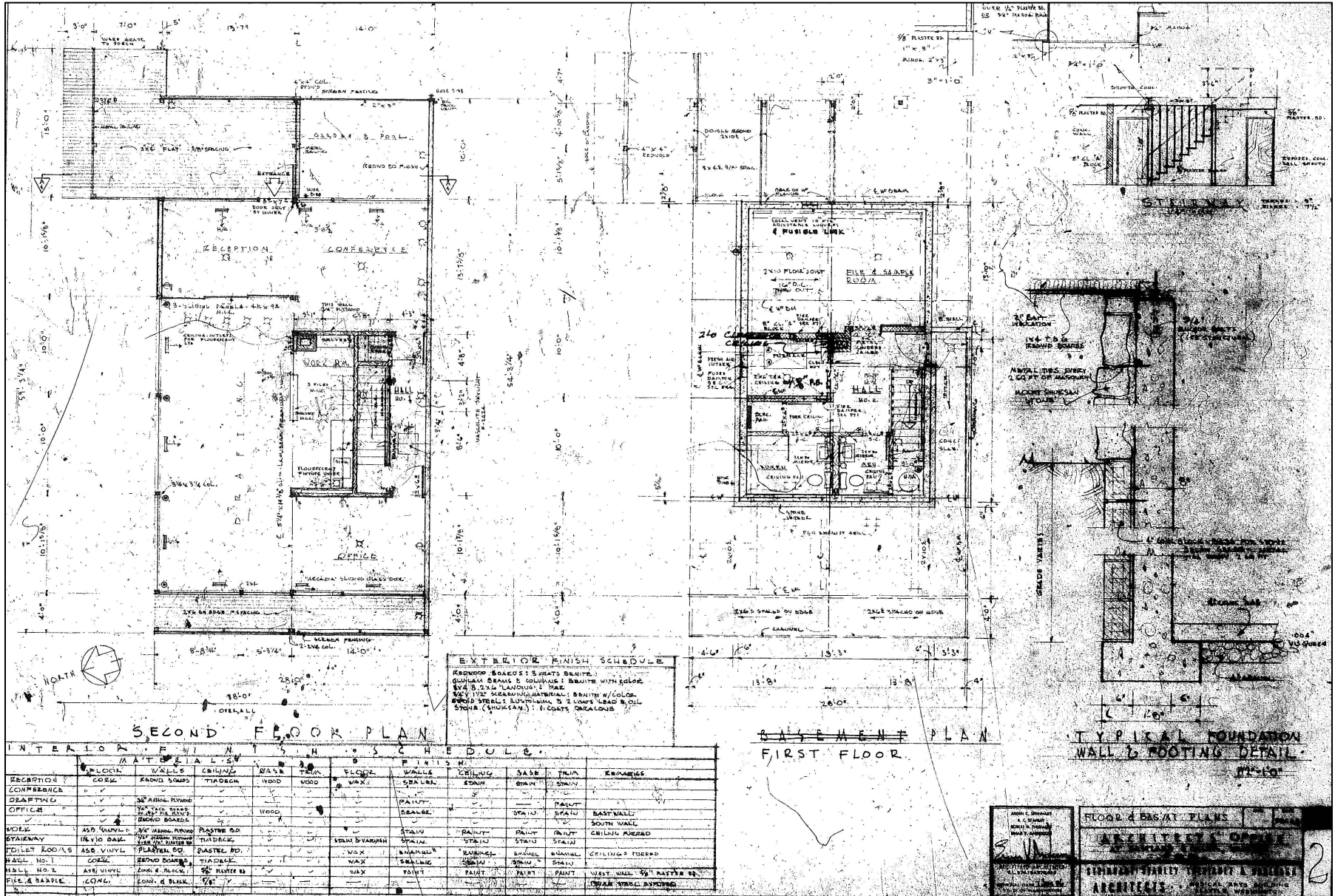
Eastlake Modernism Tour

Presented by Historic Seattle
& DoCoMoMo. WeWa
6.30.2001

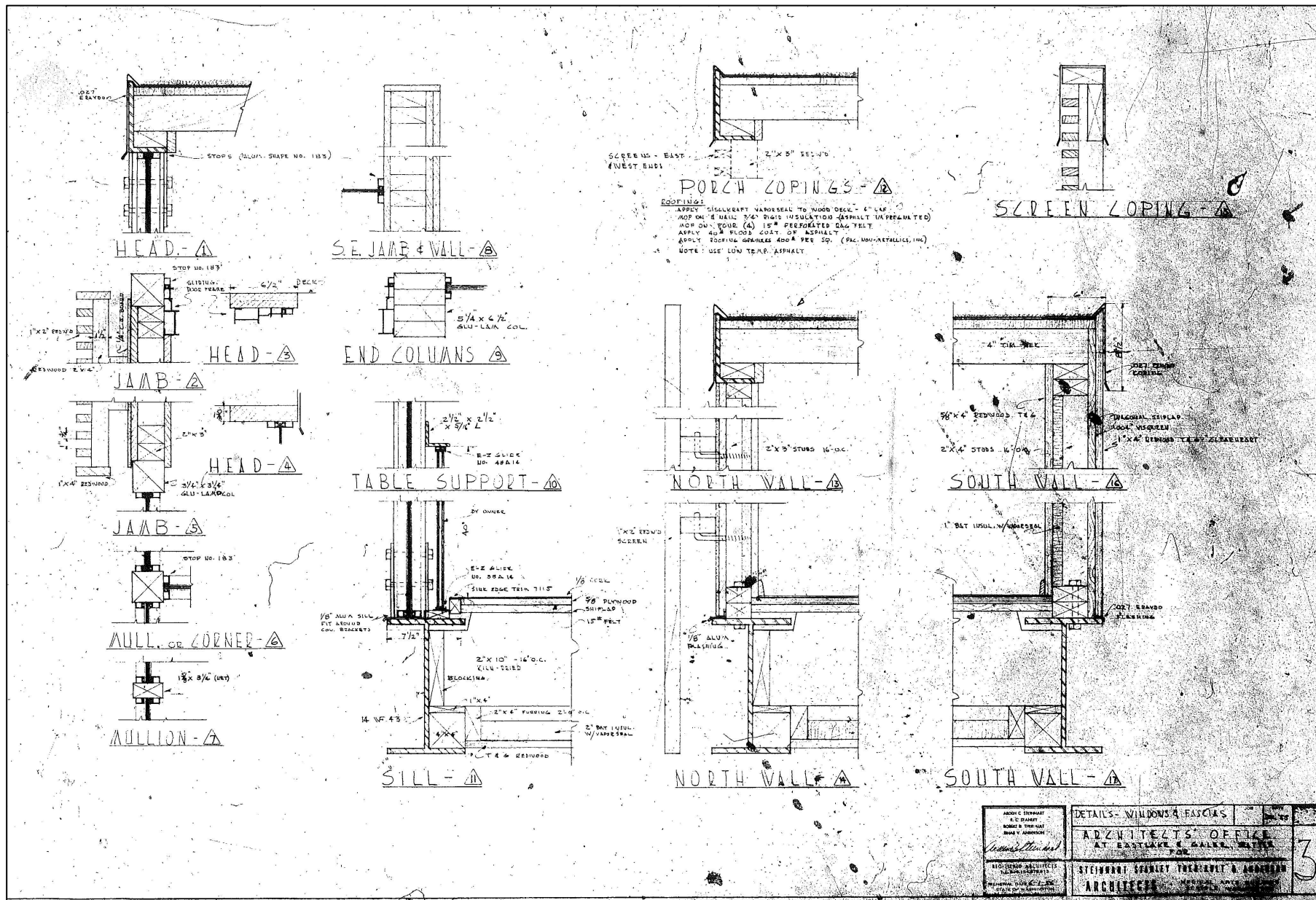
**Design drawings by Steinhart Theriault & Anderson:
Site & Roof Plan (north is oriented down)**



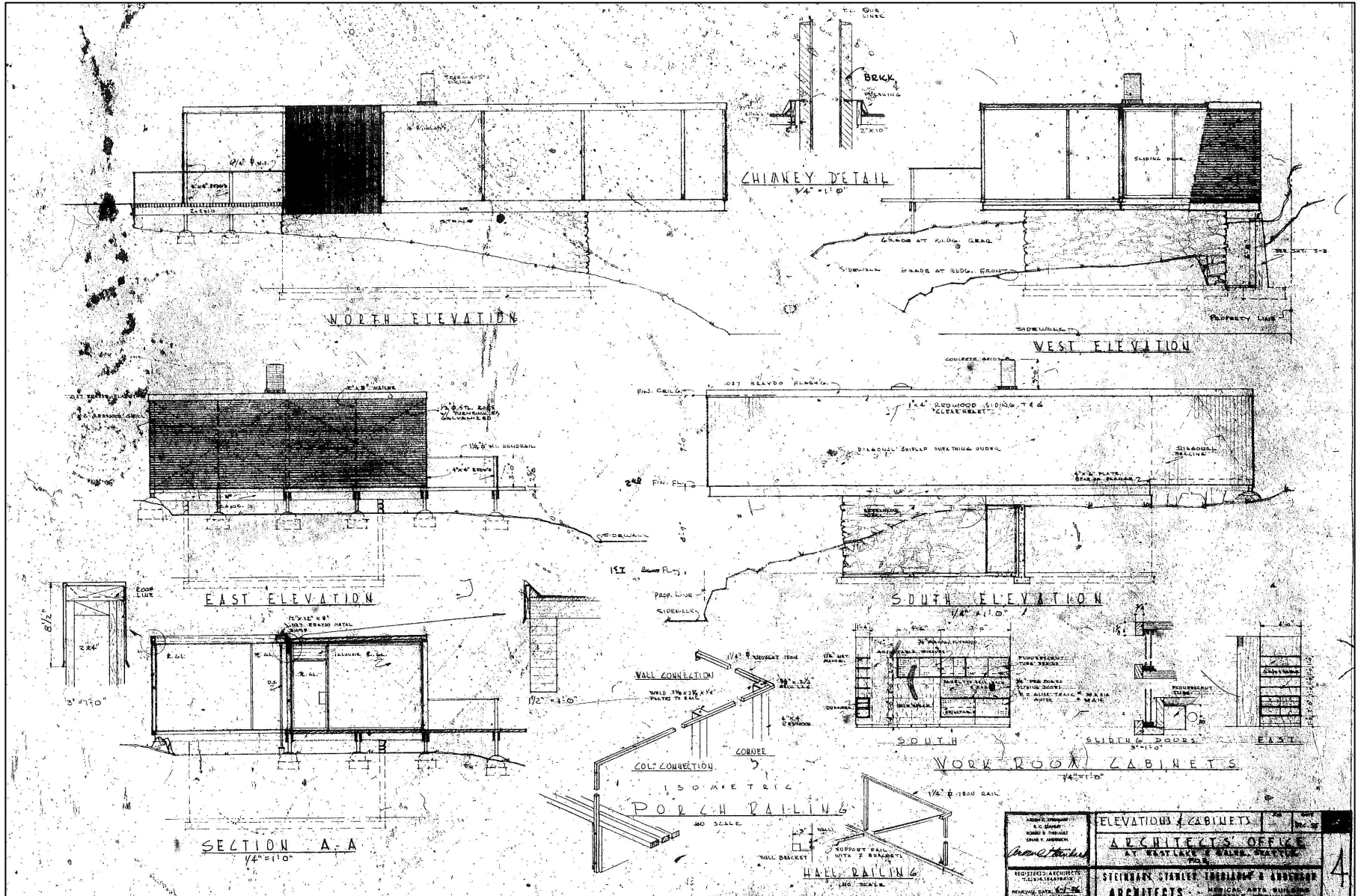
Design drawings by Steinhart Theriault & Anderson: Floor Plans



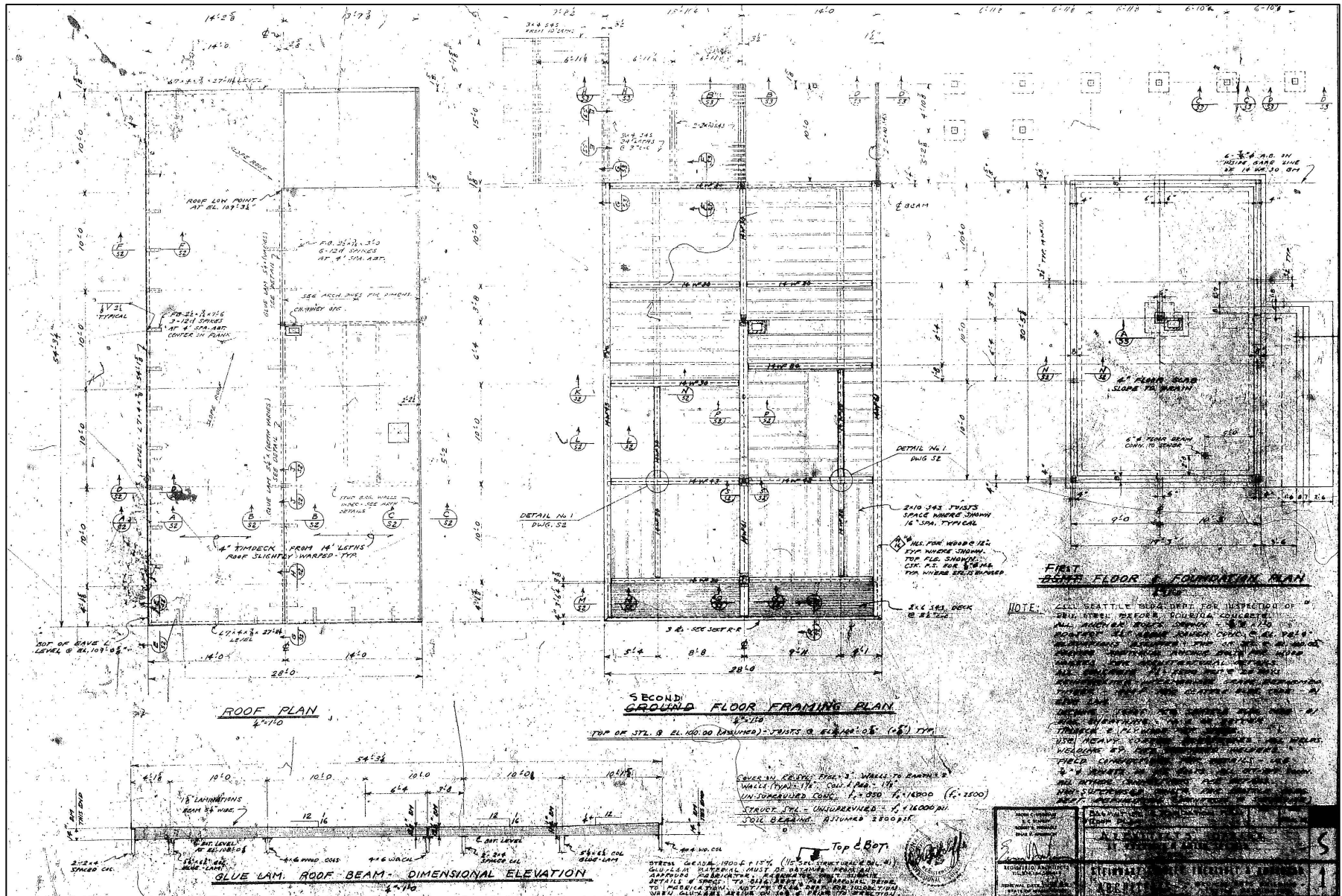
Design drawings by Steinhart Theriault & Anderson: Window & Fascia Details

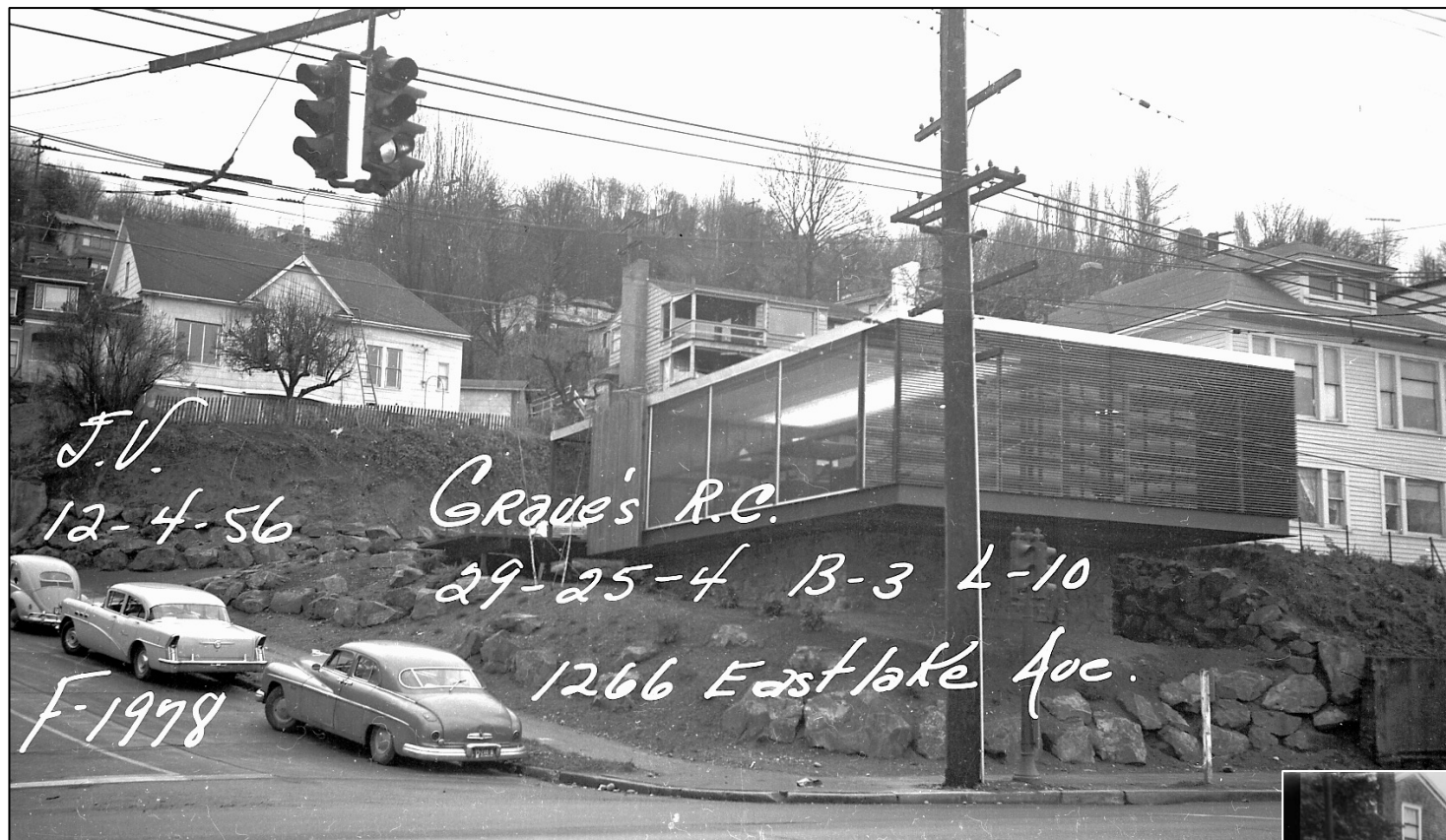


Design drawings by Steinhart Theriault & Anderson: Sections & Elevations



Design drawings by Steinhart Theriault & Anderson: Structure & Framing





The Architect's Office at 1264 Eastlake Avenue E
Designers: Arden Steinhart, Robert Theriault & Einar Anderson
Structural Engineer: Donald G. Radcliffe
Builder: C.B.S. Construction Company
Design: December 1955
Construction: May 1956
Construction Cost: \$22,800



Urban Context: The Eastlake Neighborhood



Current setting: Looking north at Eastlake and Fairview Avenues E and Galer Street



Looking south on Eastlake Avenue E





Current Exterior Views







**The building in
1975 and 2021**



Materials:

- **Steel wide-flange beams**
- **Steel X-brace tie rods**
- **Granite-clad concrete foundation**
- **Aluminum framed windows**
- **Stained redwood cladding**
- **Stained redwood strip screening**
- **Cork flooring**
- **Mahogany trim**
- **Redwood ceiling**
- **Translucent fiberglass screens**
- **Asphalt with embedded stones**
- **Native plantings**





Select projects by Steinhart Theriault & Anderson

- Highline, Mercer Island & Shoreline schools
- West Seattle dental office & Burien bank
- Five Seattle area churches
- Rainier Golf & Country Club
- The Swedish Club
- The Cove, Normandy Park

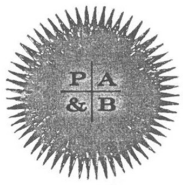


Some comparable Modern style Seattle buildings



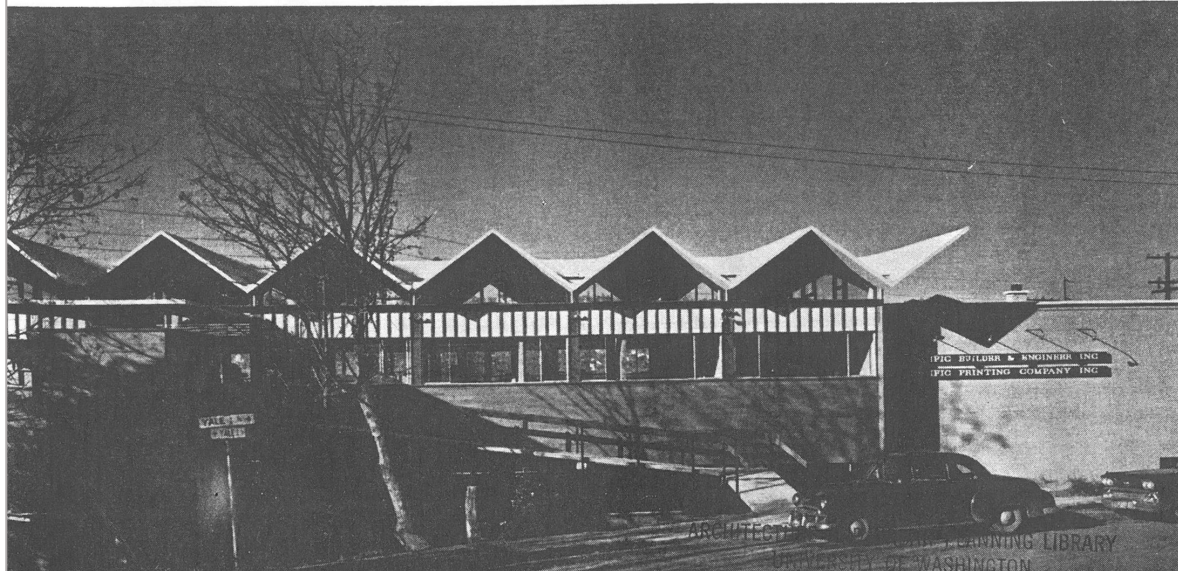


Modern style buildings in Eastlake



ARCHITECTURE AND URBAN PLANNING LIBRARY
UNIVERSITY OF WASHINGTON
SEATTLE 5, WASHINGTON

MAGAZINE OF WESTERN ARCHITECTURE ♦ JANUARY 1961





**Steinhart Theriault & Anderson
Architects Office**

“This little building (is) ‘a real eye-stopper’
with an overall design quality that
removes it from the gimmick category.”

- *Pacific Architect and Building*,
September 1960