



## Sacajawea Elementary School

9501 20<sup>th</sup> Avenue NE

(Waldron & Dietz, 1959)



Seattle Landmarks Preservation Board

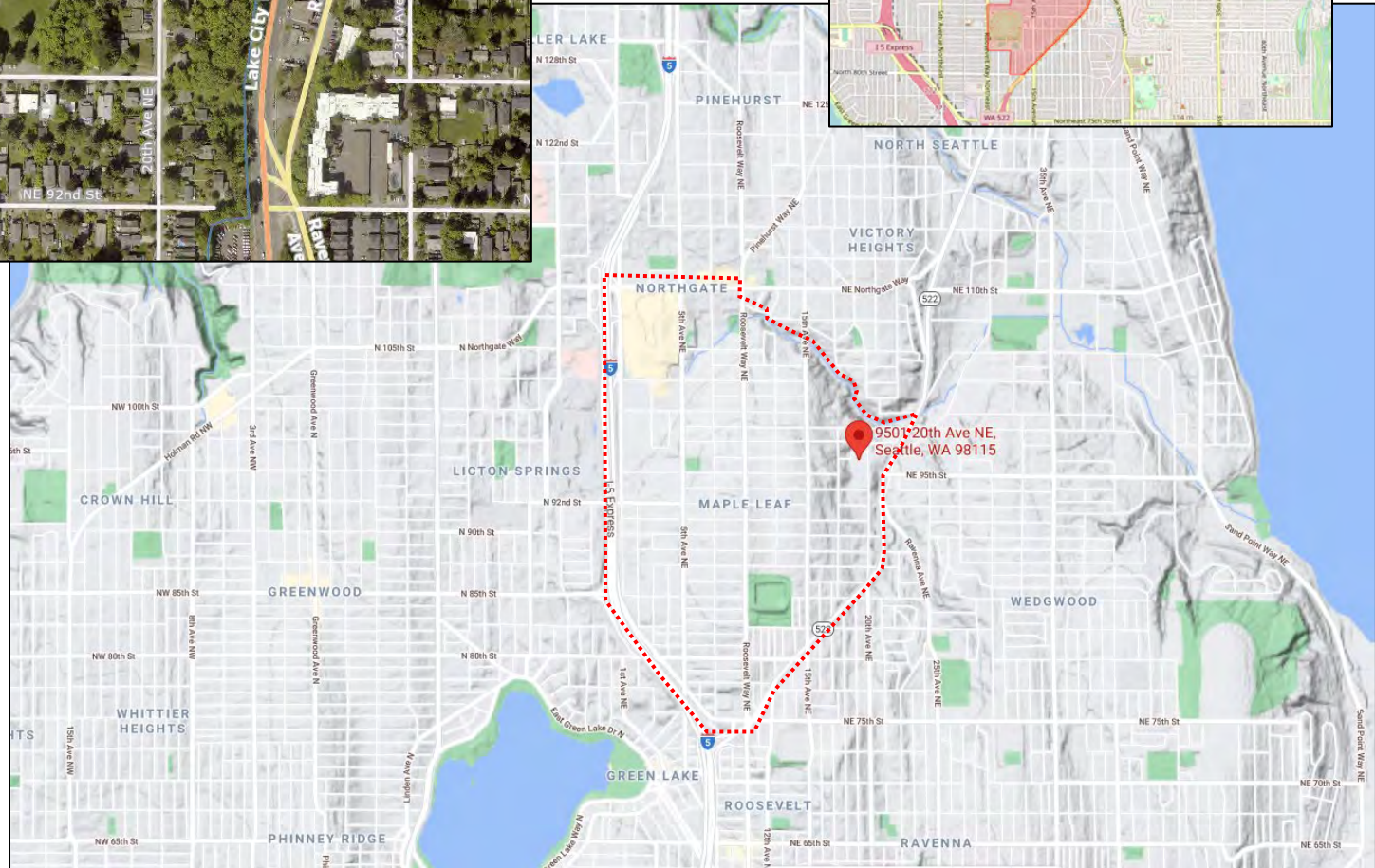
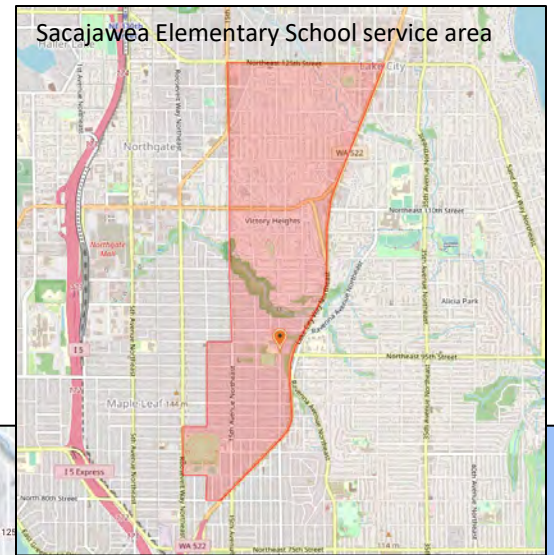
Nomination meeting

July 20, 2022

**David Peterson** *historic resource consulting*  
PO Box 115 Seattle WA 98111 P:206-376-7761 david@dphrc.com

BOLA Architecture + Planning  
Seattle





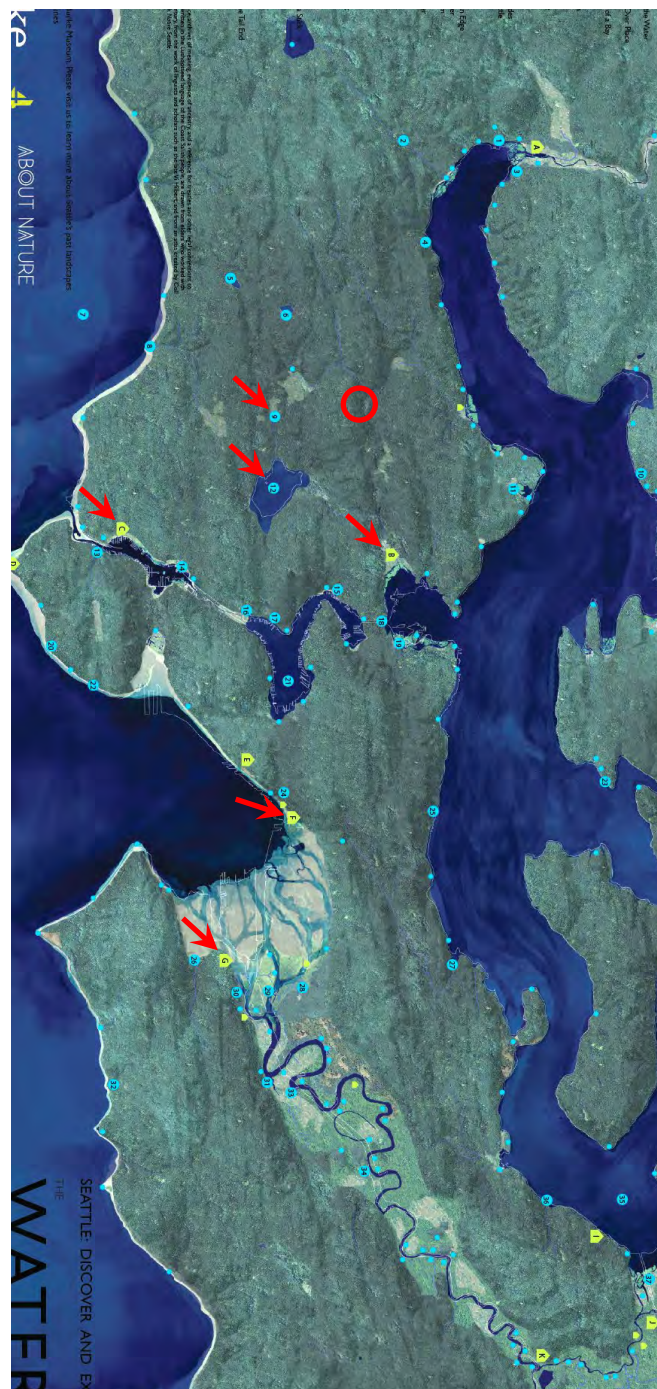
## Maple Leaf Neighborhood





○ Approximate future location of Sacajawea Elementary

From the Burke Museum Waterlines Project Map, "showing the region in the mid-19<sup>th</sup> century, just prior to non-Indigenous settlement."



### Village Sites

- A. ʔaxʔadís – The Growing Place
- B. stuwit – Little Canoe Channel
- C. ʔalsul – Tucked Away Inside
- D. paqacatcu – Brush Spread on the Water
- E. babaqʔab – Little Prairie
- F. sdʔidʔalʔalič – Little Crossing-Over Place
- G. tʔuʔulʔaltxʔ – Herring's House
- H. sáʔcaqat – Water at the Head of a Bay
- I. sxʔtʔicib – Swimming Hole
- J. daxʔəbqʔuʔ – Confluence
- K. sqʔuʔalqʔu – Meeting of Rivers

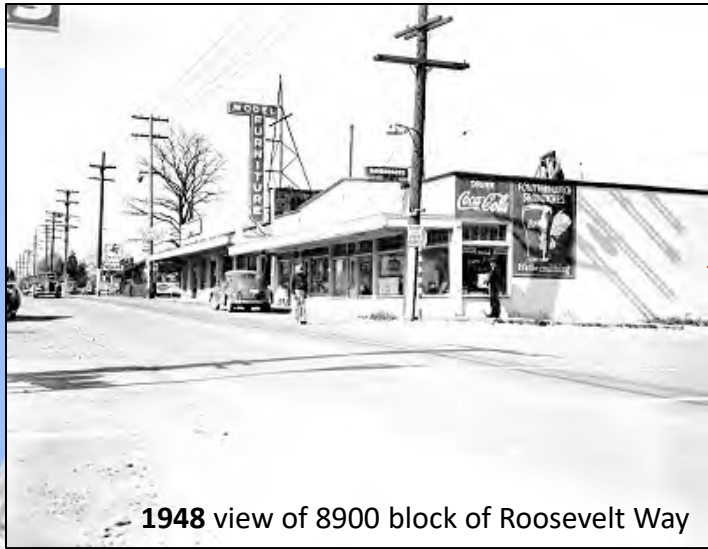
### Water-related Places

- 1. ʔabtalʔt xʔ – Elderberry House
- 2. sʔacús – Face
- 3. sóap – Deep Water Hole
- 4. bəscələ – It Has a Rock
- 5. ʔalqʔadi – Blackcaps on the Sides
- 6. sisatʔab – Calmed Down a Little
- 7. xʔalč – Salt Water
- 8. qʔatab – Dropped Down
- 9. liqʔad – Red Paint
- 10. ʔatxəb – Water Falling Over an Edge
- 11. ʔaʔatqu – Digging in the Water
- 12. dxʔʔəš – Translation Unknown
- 13. hiwayqʔ – Lots of Water
- 14. bəʔadaqt – Spirit Canoe Power
- 15. waqʔiqab – Croaking
- 16. gʔa xʔap – Outlet
- 17. sč axʔalqu – Thrashed Water
- 18. sxʔacadwʔ – Carry a Canoe
- 19. stafat – Baby Fathom
- 20. ʔuxʔatqu – Cold Creek
- 21. xaxəcu – Small Lake
- 22. qalʔatqu – River Otter Creek
- 23. ʔagʔus – By the Water
- 24. bulač – Spring
- 25. ʔatxəb – Saw-Grass Point
- 26. tʔawl – Smelt
- 27. sčak akʔid – Cooking Fish on a Stick
- 28. sluwit – Canoe Opening
- 29. ʔaqas – Tideflats
- 30. xaxabus – Crying Face
- 31. tʔalič – Fish Drying Rack
- 32. gʔul – Capsized
- 33. pupilʔalap – Little Bends at the Tail End
- 34. cuxʔʔaltxʔ – Sweat House
- 35. xacʔu – Lake
- 36. ʔipčip – Ducklings
- 37. spaptxad – Marshes





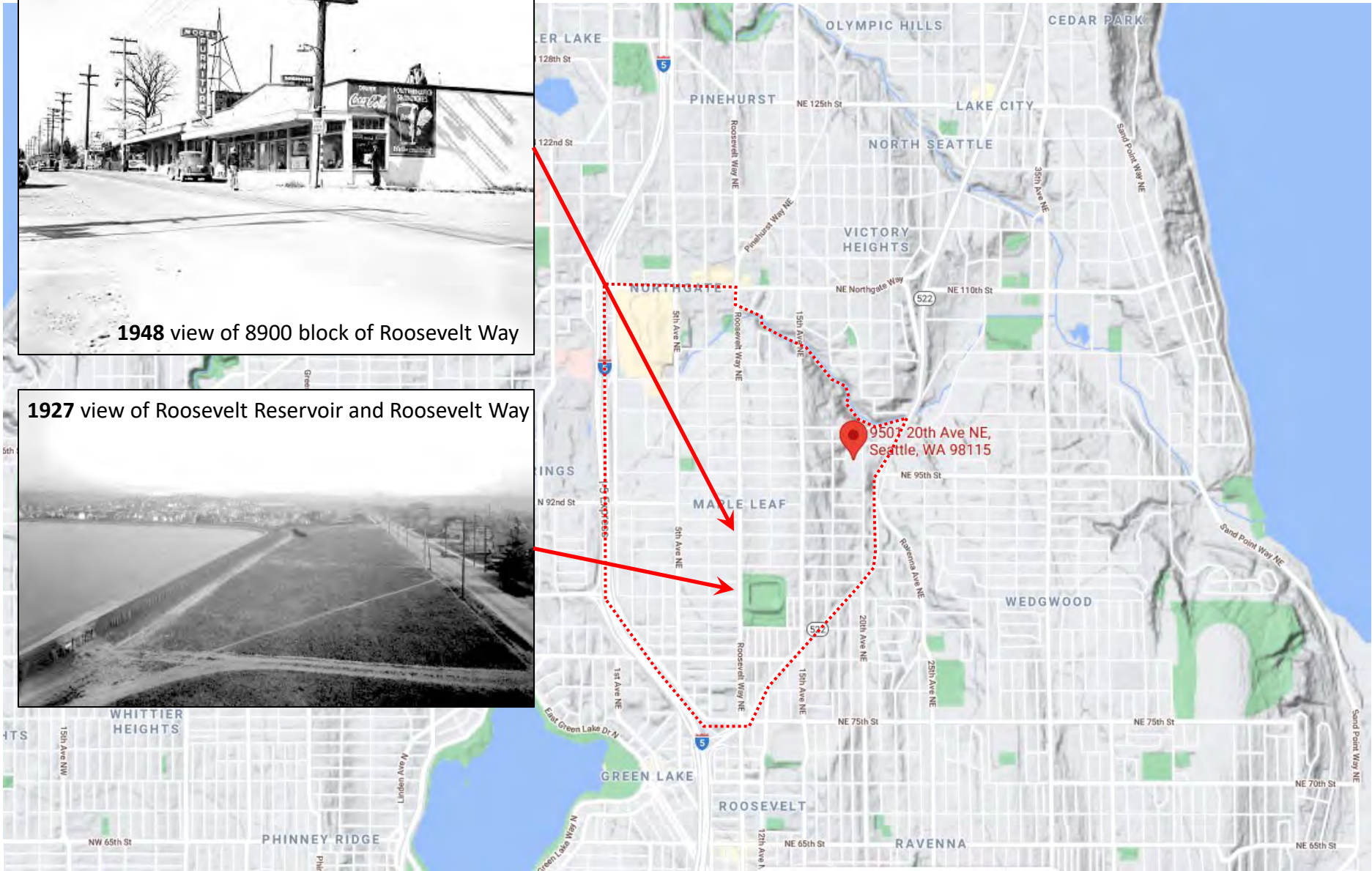


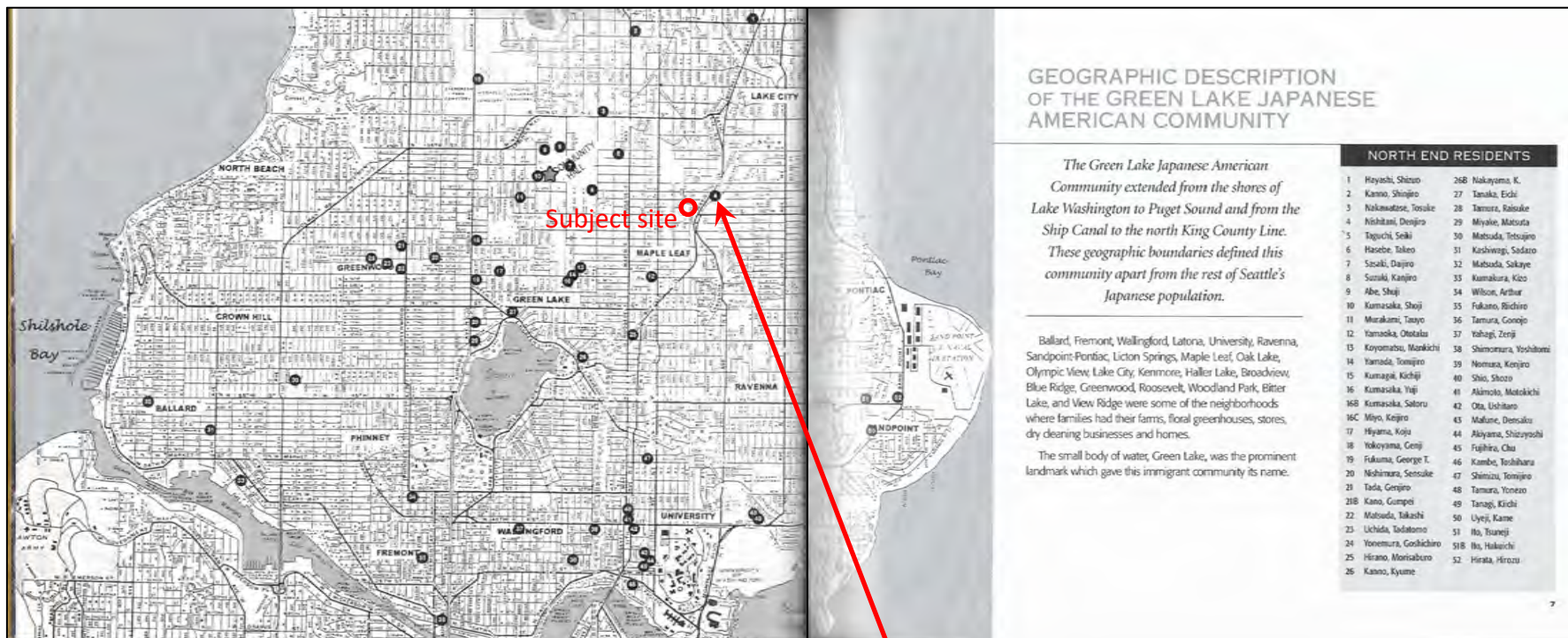


1948 view of 8900 block of Roosevelt Way



1927 view of Roosevelt Reservoir and Roosevelt Way





Undated view of Oriental Gardens nursery, established by Denjiro Nishitani, operated ca. 1912-1973 near subject site.





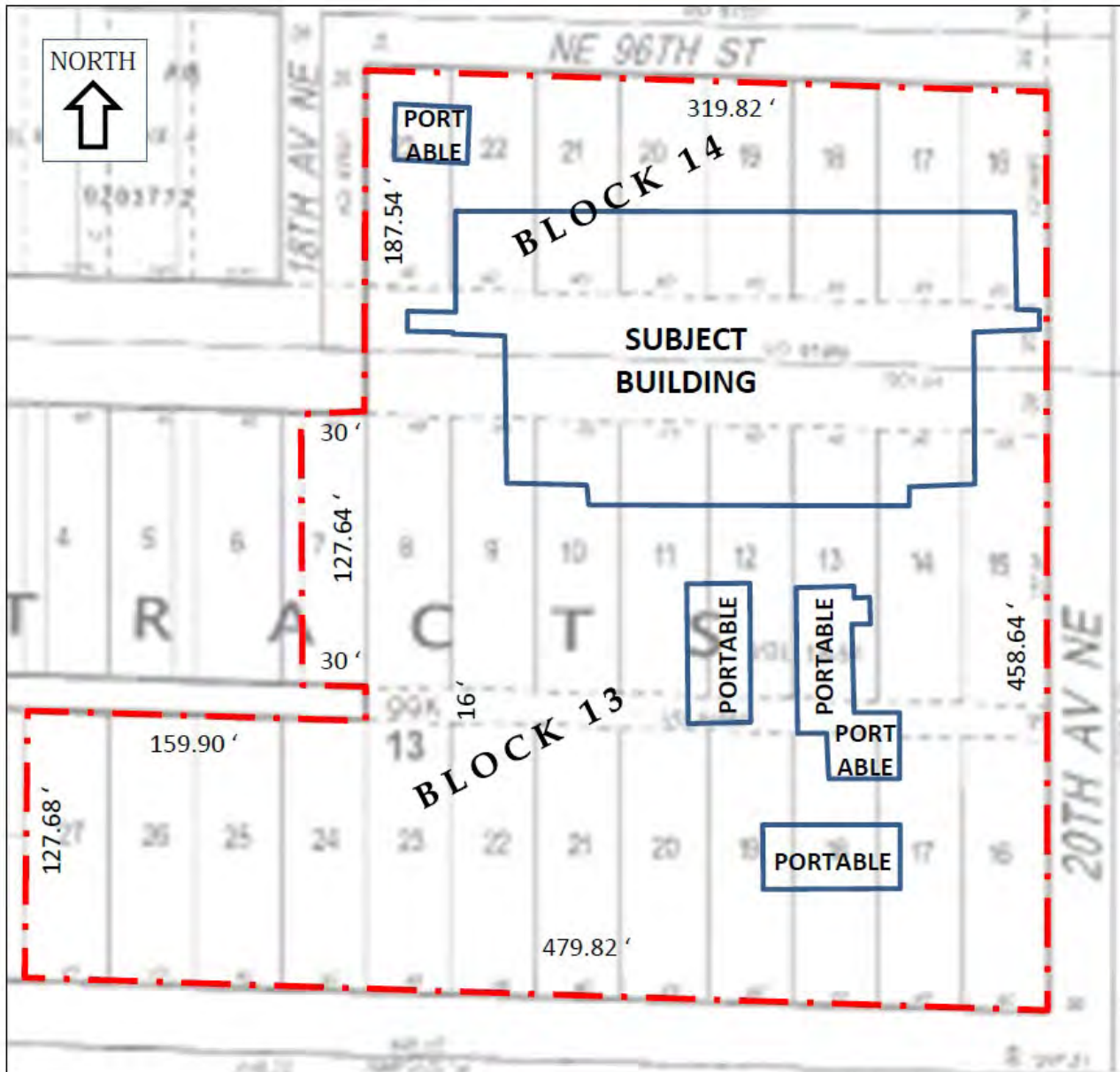
NE 96<sup>th</sup> Street, view west  
from the site



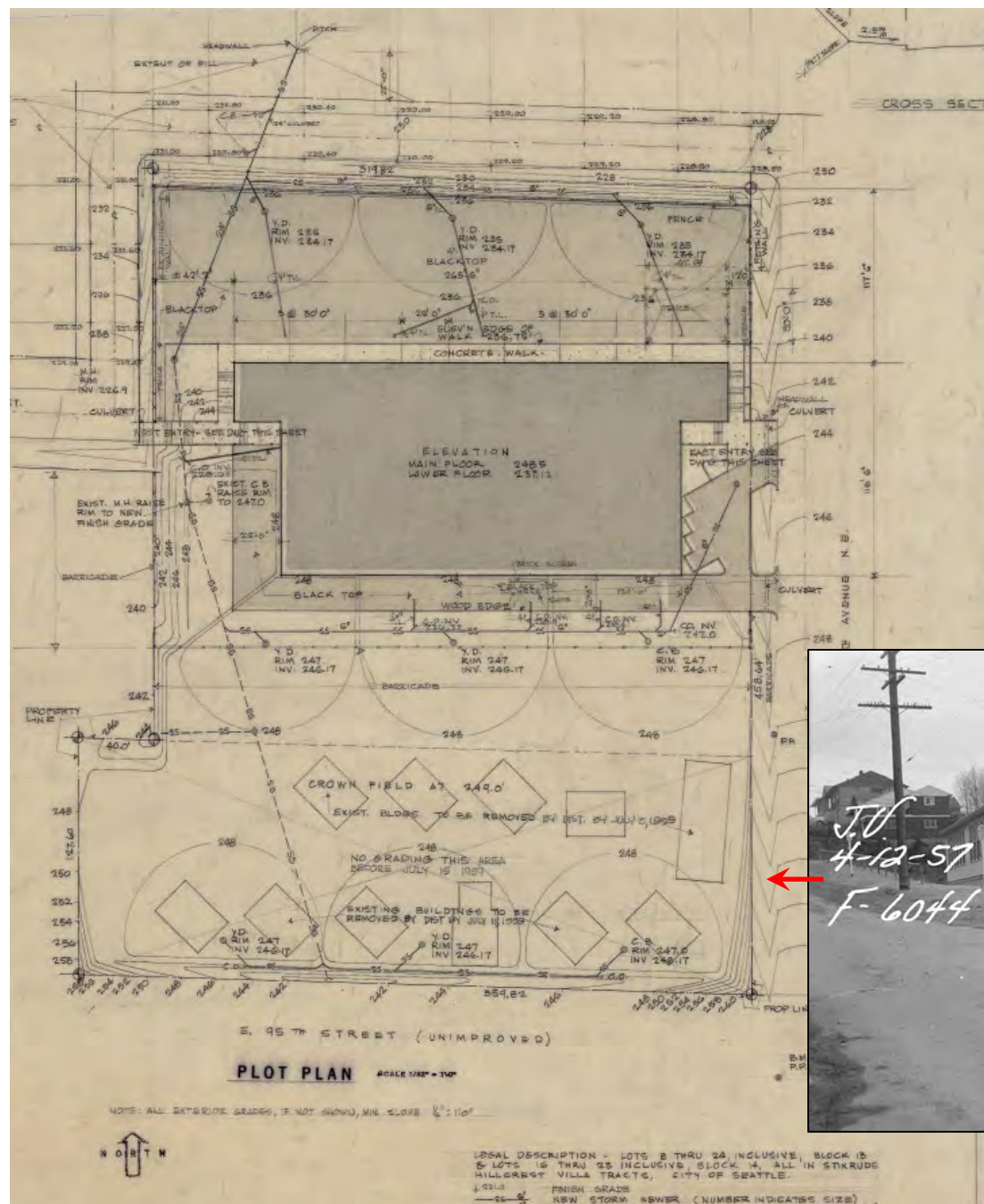
Sacajawea  
Playfield

Lake City Way, one block  
east of the school.









## 1955-1959

All-portables school operated at the south end of the site, so that the permanent school could be constructed on the north end.







1959

Construction of the permanent school  
Designed by Waldron & Dietz, built by Baugh Construction

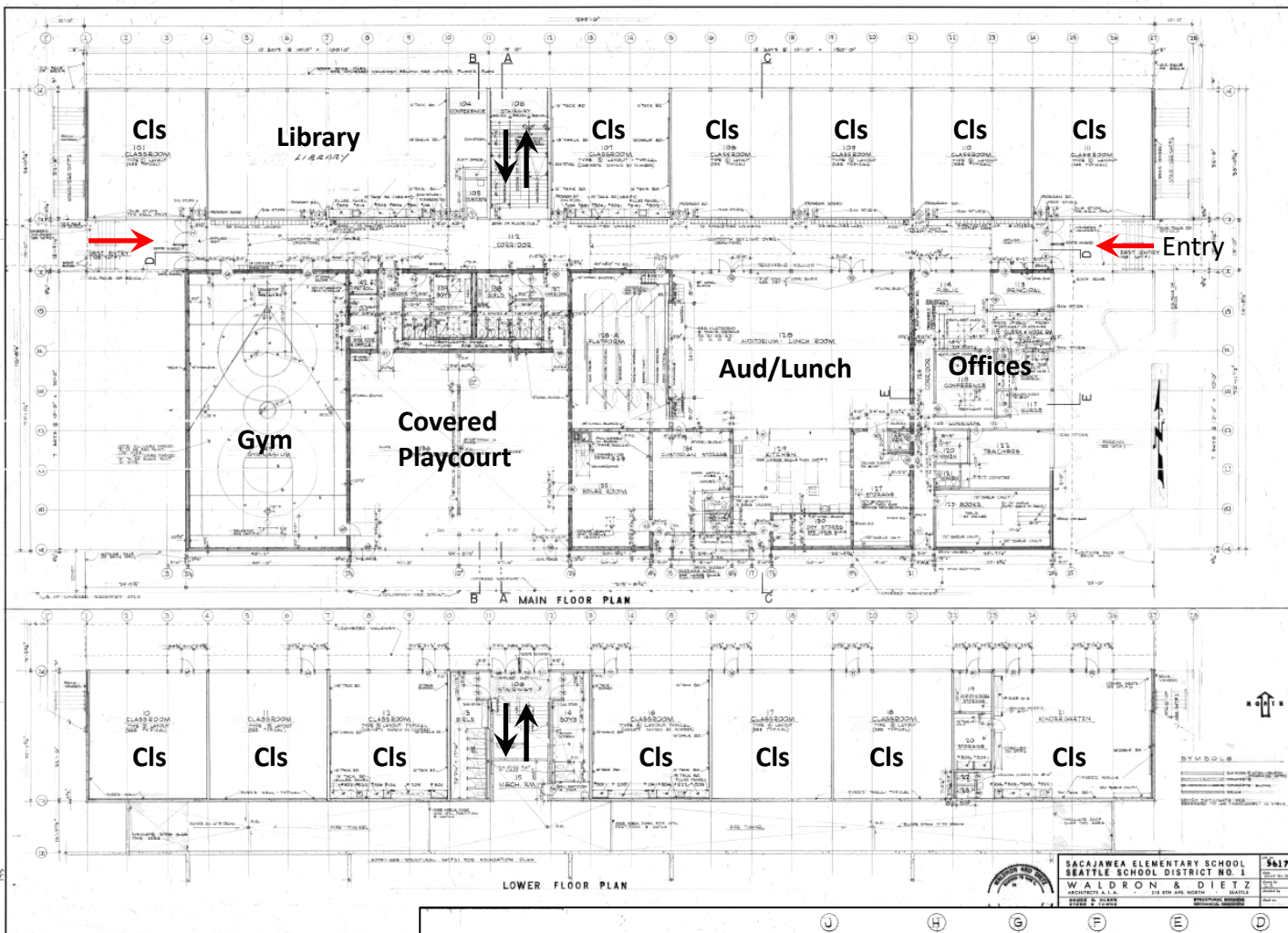




Sacajawea Elementary, 1968

<b>Year</b>	<b>Census Tract Population</b>	<b>Racial Components</b>
1950	1,726 total	99.8% white
1960	3,186 total	99.2% white
1970	3,271 total	96.4% white; 1.9% Asian
1980	2,792 total	92.4% white; 3.8% Asian; 2.0% Hispanic/Latino
1990	2,880 total	88.6% white; 7.4% Asian; 2.3% Black
2000	3,116 total	82.6% white; 7.7% Asian; 4.1% Two or more; 3.2% Black
2010	3,406 total	81.8% white; 8.3% Asian; 4.3% Hispanic/Latino; 2.3% Black
2020	3,723 total	70.2% white; 11.6% Two or more; 11.4% Asian; 2.2% Black

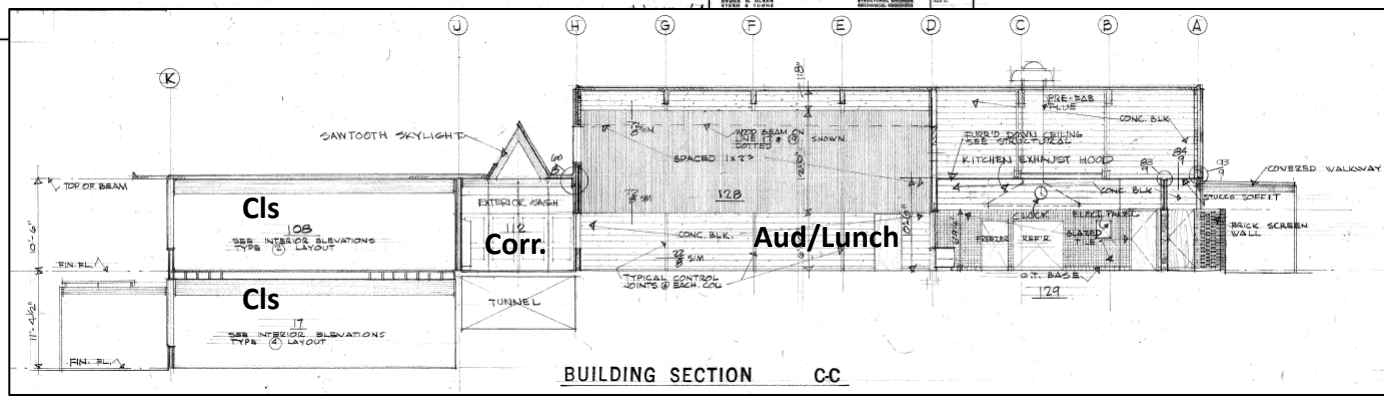




Main floor

Lower floor

"Cls" = Classroom







1959



1960



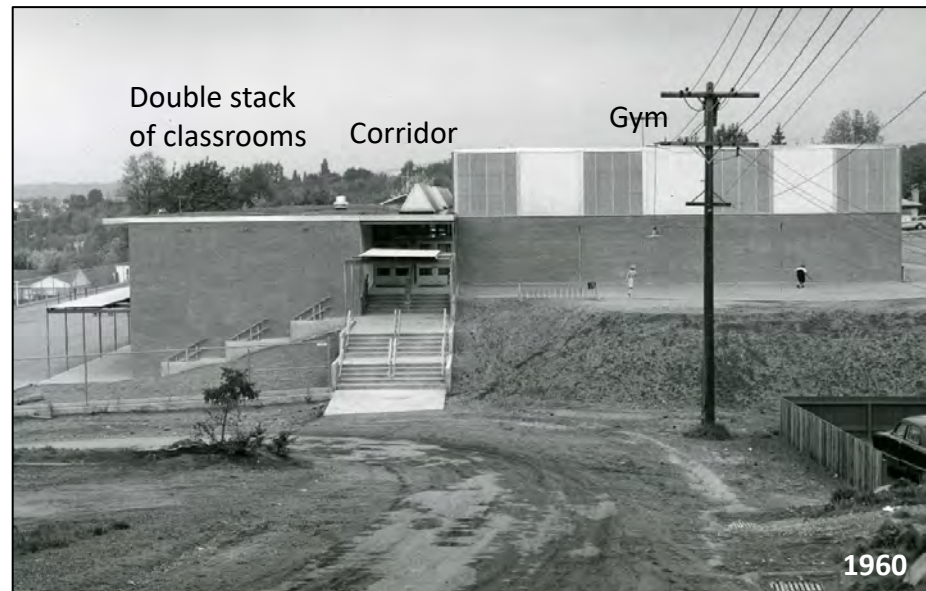
East Facade





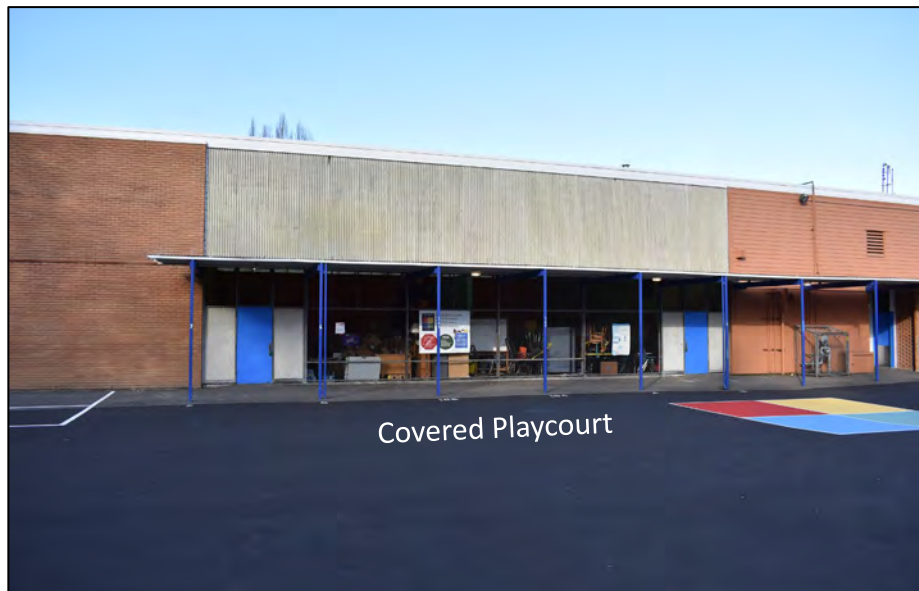
North Facade





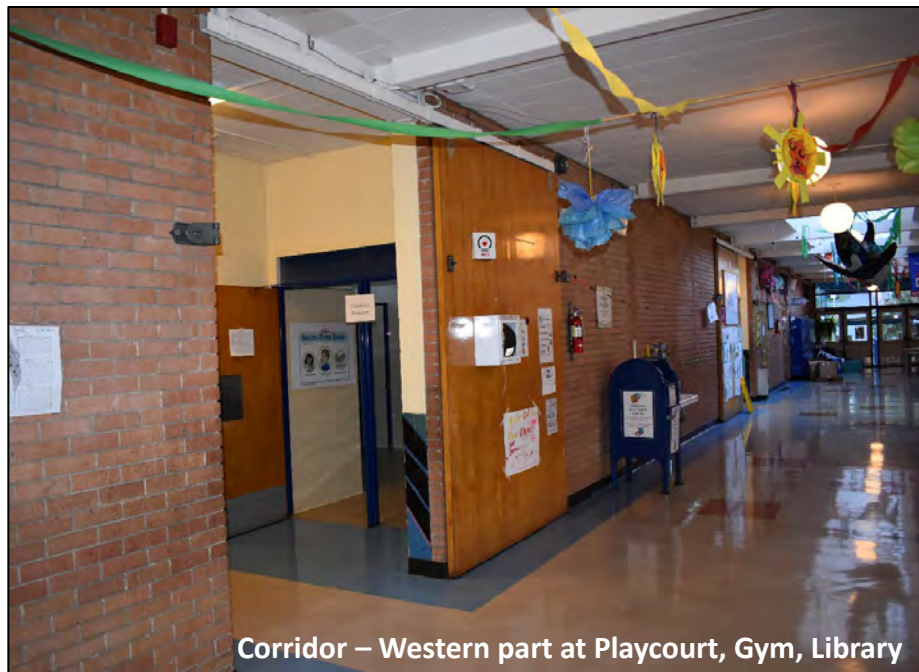
**West Facade**



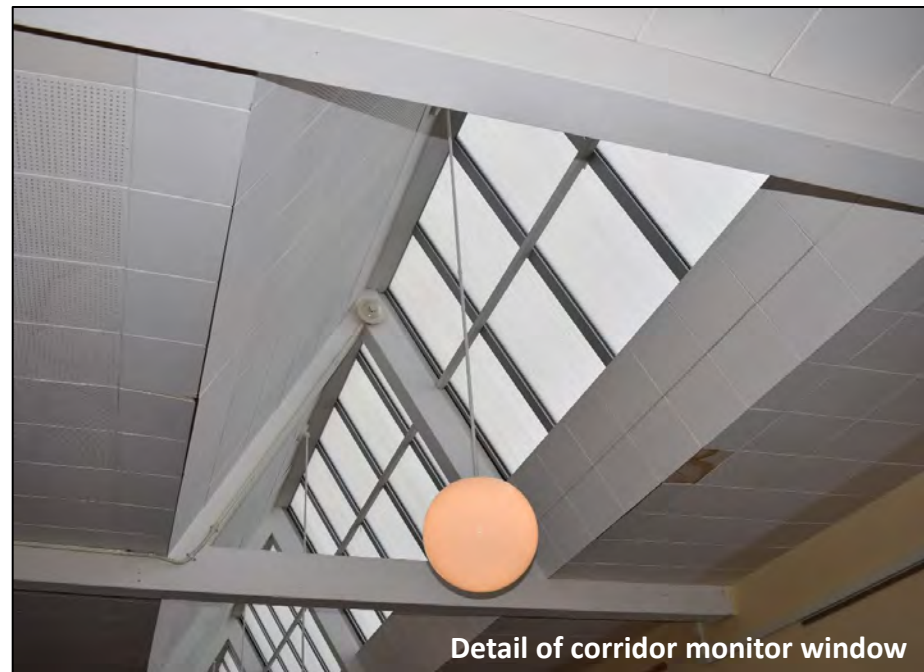


South Facade





Corridor – Western part at Playcourt, Gym, Library



Detail of corridor monitor window



Main Entry



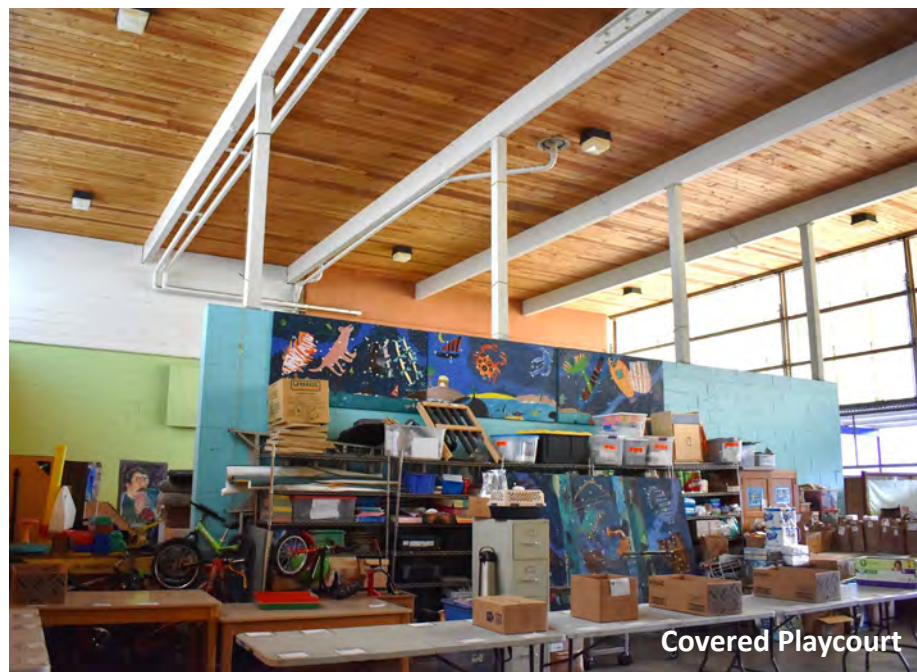
Corridor – Eastern part at Offices, Aud./Lunchroom

Main Entry and Main Floor Corridor





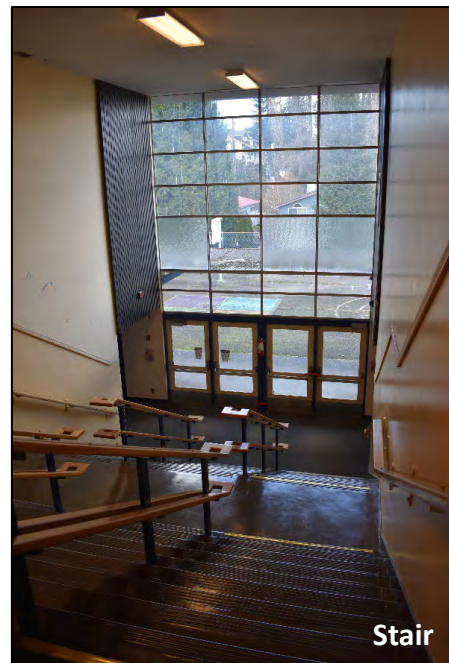




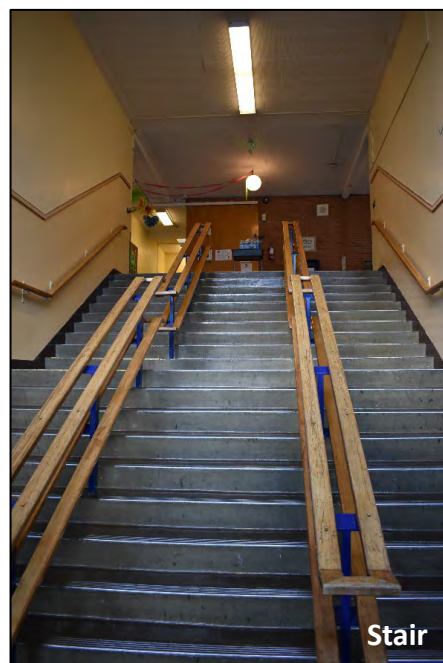
Covered Playcourt



Covered Playcourt



Stair



Stair



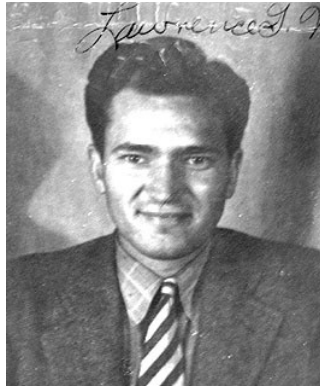
Gym





**Portable Classrooms** (ca. 1950s and 2000s)





**Waldron & Dietz,  
Architects**



**Normandy Park  
Elementary, Norm. Pk.  
(1954)**



**Broadview-Thomson  
Elementary, Seattle  
(1963)**







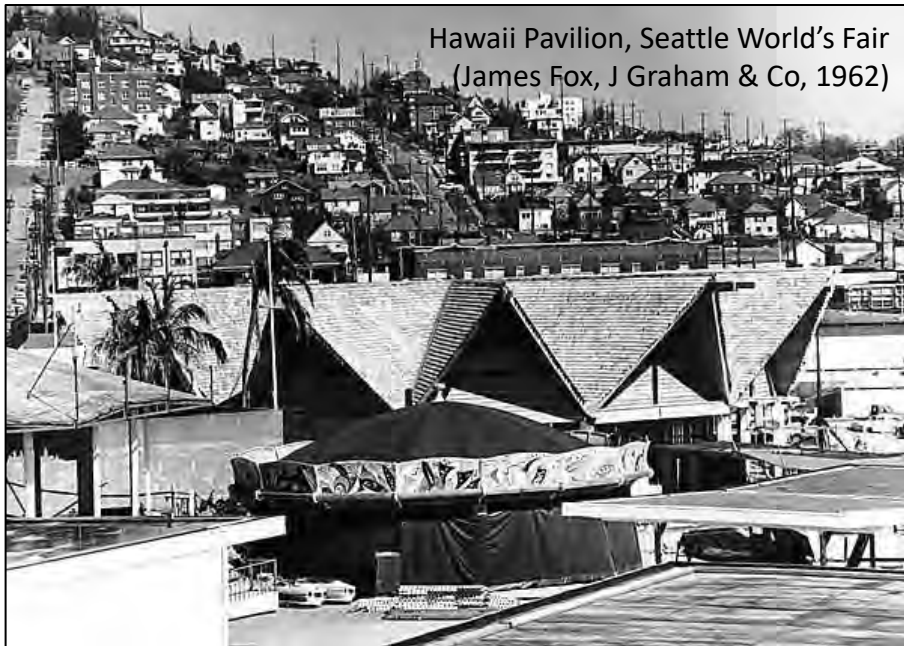
Woodway Elementary, Edmonds (1955)



Norkirk Elementary, Kirkland (1956)





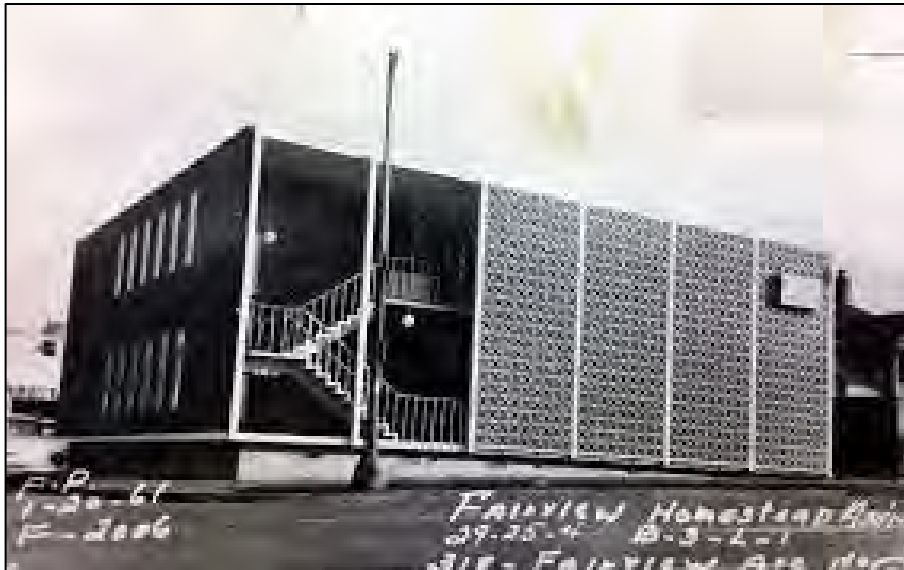


Hawaii Pavilion, Seattle World's Fair  
(James Fox, J Graham & Co, 1962)

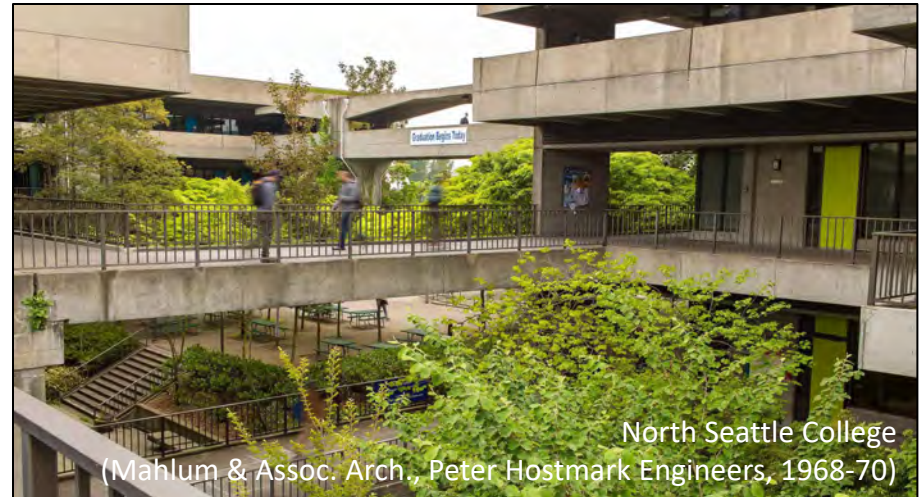


Baugh  
Construction,  
Contractor

Univ. of Wash.  
Winkenwerder Hall  
(Grant, Copeland & Chervenak, 1963)



Bricklayers Union Building (Grant, Copeland & Chervenak, 1954)



North Seattle College  
(Mahlum & Assoc. Arch., Peter Hostmark Engineers, 1968-70)





## Seattle Municipal Ordinance, 25.12.350

### Standards of designation:

An object, site, or improvement which is more than twenty-five (25) years old may be designated for preservation as a landmark site or landmark if it has significant character, interest or value as part of the development, heritage or cultural characteristics of the City, state, or nation, if it has integrity or the ability to convey its significance, and if it falls into one (1) of the following categories:

#### Criterion A.

It is the location of, or is associated in a significant way with, an historic event with a significant effect upon the community, City, state, or nation.

#### Criterion B.

It is associated in a significant way with the life of a person important in the history of the City, state, or nation.

#### Criterion C.

It is associated in a significant way with a significant aspect of the cultural, political, or economic heritage of the community, City, state, or nation.

#### Criterion D.

It embodies the distinctive visible characteristics of an architectural style, or period, or method of construction.

#### Criterion E.

It is an outstanding work of a designer or builder.

#### Criterion F.

Because of its prominence of spatial location, contrasts of siting, age, or scale, it is an easily identifiable visual feature of its neighborhood or the City and contributes to the distinctive quality or identity of such neighborhood or the City.