



Art Proposal

**“As I live with the wall and hear the public thoughts,
I begin to find endless meanings and perspectives to
my work. I really enjoy the range of reactions to my
art. But for me it’s more of just a love for painting.”**

HOXXOH



Perfectionist, researcher-artist HOXXOH conceives and uses projection and dripping techniques to give life to fluid painterly shapes and patterns embedded in a philosophical approach. Through repetitions and analyses, the artist has managed to recreate the characteristic harmony of contingency, revealing the aesthetic qualities of controlled chaos.

Douglas Hoekzema is a Miami-based artist whose ever-evolving painting style emphasizes mark-making, colour, and mechanized paint application instruments. His use of hand-engineered mechanisms allows each new series to represent not only a new time in his life but also an entirely new technique of painting.

Instagram Insights.

Followers: 77,700

Accounts Reached, 04/21 - 04/28:

136,334

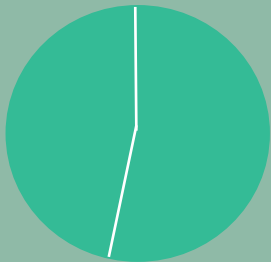
+ 17,672 vs. 04/13 - 04/20

Impressions, 04/21 - 04/28:

406,532

+ 14,288 vs. 04/13 - 04/21

Gender:

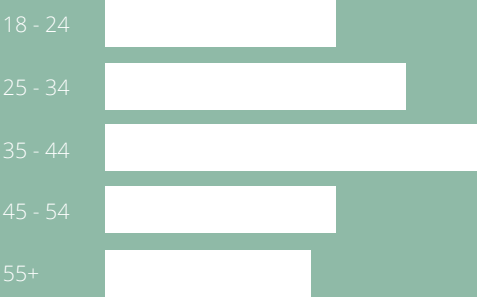


Female 47% , Male 53%

Top Locations:



Age Range:













MTN 94
400ml - Matte Spray Paint

Its low pressure and smooth valve system make MTN 94 an extremely easy aerosol paint to handle. This is a spray paint with a matte finish. It is made with next generation modified alkyd resins and has been developed to meet the highest demands from the graffiti and fine arts market.

- Low pressure.
- Fast drying.
- Good hardening.
- Excellent flexibility.
- Strong resistance to scratching once the film is polymerized.
- Does not contain lead nor other heavy metals.
- Good covering capability.
- Color durability.
- Easy to apply and repaint.
- Very good resistance to the sun and rain.
- Very good resistance to UV light (see chart).



Resilience Exterior Acrylic Latex:

Resilience Exterior is a high quality exterior finish with MoistureGuard™ Technology for excellent early moisture resistance.

- Formulated with exclusive MoistureGuard™ Technology for excellent moisture resistance in half the time of traditional latex paints
- A mildew resistant coating.
- Outstanding hide, coverage, durability and dirt resistance
- Flows and levels for a smooth, uniform finish.
- Low temperature application down to 35°F

- Adapt to the Architectural Structure
- Evoke Positivity
- Attention to Building
- Perceptual Understanding
- Organic Pattern
- Complimenting Colors
- Movement to Imply Action + Rhythm
- Color Vibrancy
- Sense of Belonging
- Place-making
- Continuity and Narrative Progression
- Synergy for People with the Surrounding Environment
- Visibility and Clarity of Work from Multiple Points of View

Pandora, Miami
20ft h x 20ft w Spray paint.



Charlotte, North Carolina
50ft h x 30ft w Spray paint.



North West Wall for Wrechter Music Festival , BELGIUM
60ft high. Spray paint.



The piece created on the Jewish Healthcare Centre in North Miami was painted using a unique technique coined by Hoxxoh as the 'Rainbird'. Each piece represents a moment and a process, sometimes connected to a larger whole and sometimes standing alone. The 'Rainbird' tool leaves its own mark and opens the door for new possibilities, allowing for nearly infinite flowing iterations.

Using acrylic paint and an airless sprayer with what only can be described as a trade secret this piece stretches 120ft x 40ft.



The Miami Marine Stadium, a sculpture in itself, has been a canvas for extraordinary murals and wall art since its abandonment after Hurricane Andrew in 1992. The spectacle of perpetually changing paintings, as muralists and graffiti artists paint over their predecessors over and over again, is a lot like a vertical Wynwood, with water views.

In 2016, Hoxxoh created a huge circular eye, sun, or bulls-eye, with a flower-like iris inside a larger iris the deep blue color of the deep sea. Two people, two days, one generator, one airless spray-gun, 70 gallons of paint.

<https://www.miaminewtimes.com/arts/miami-artist-hoxxoh-completes-massive-and-perhaps-final-mural-at-miami-marine-stadium-8712268>



The inclusion of street art to Jose De Diego Middle School in Miami was an initiative of Robert De Los Rios, who partnered with private contributors, fundraising and approached a coalition of artists to paint the walls of the school for the kids. It is interesting to know that the year prior to this in 2013 the school had 93 separate calls to the police at the school and the year proceeding the inclusion of art they had 0.

Hoxhoh painted a more abstract version of his moniker on the entrance of the school, facing the viewers in transit. This piece was created in the winter of 2014 with spray paint and is approximately 30ft h x 40ft w

<https://www.tes.com/magazine/article/graffiti-schools-how-one-principal-embraced-street-art>



Hyde Hollywood Resort is a beach resort is based just North of Miami South Beach.

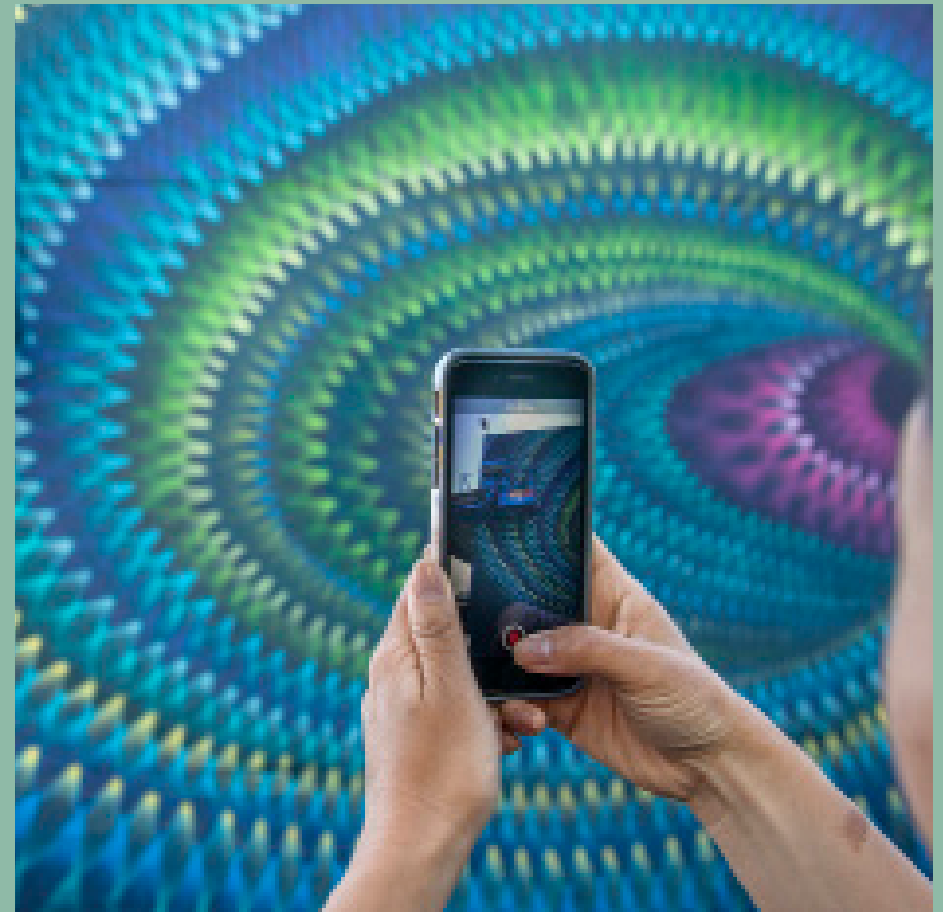
Hoxxoh painted a vortex facing South and boasts one of Hoxxoh's largest murals to date. This piece was created in the winter of 2016 with spray paint and acrylic and is approximately 25,000 sqft



The SODO Track has transformed the portal to Downtown Seattle – a two-mile transit corridor travelled by over 50,000 daily, into an imaginative raceway in motion.

For SODO Track, Hoxsah painted a kaleidoscopic vortex facing the viewers in transit, suggesting an alternative pathway to another dimension. A mesmerizing storm of color and shape. This piece was created in the summer of 2018 with spray paint and acrylic and is approximately 25ft h x 30ft w

<https://www.4culture.org/sodo-track-2018/>



For 11 years now, CRUSH Walls has transformed the alleys and buildings of RiNO into an open-air art gallery.

This piece, named “Lux in Tenebris” was in collaboration with street artist ‘EL Mac’ with the use of spray paint and acrylic. The piece stretches the length of 60ft with 35 ft in height and created in September 2020.

<https://303magazine.com/2020/06/Denver-crush-artists-2020/>



