



The Thomas and Sarah Esther Bordeaux House
806 Fourteenth Avenue East, Seattle, Washington

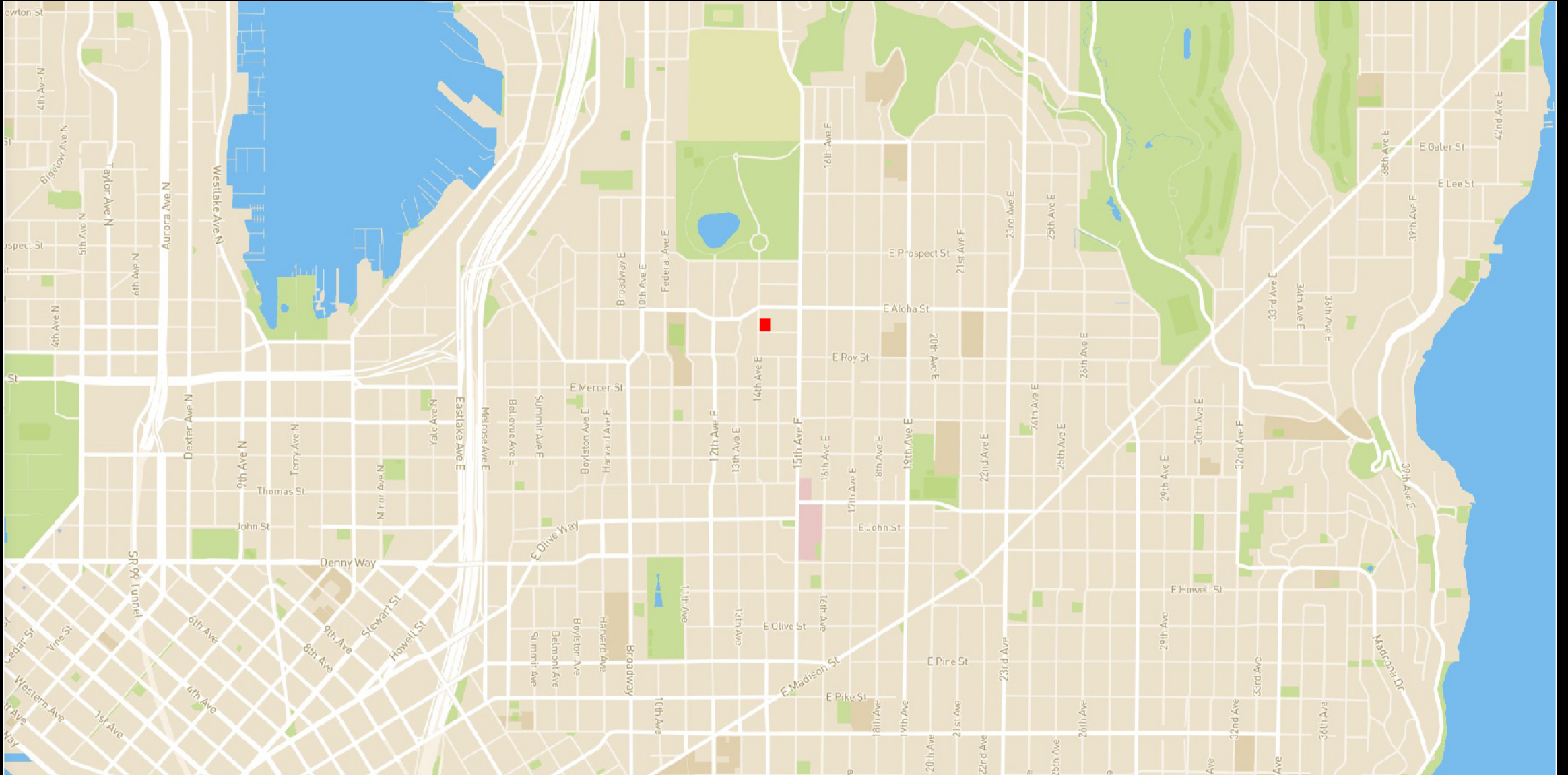
Presentation to the Landmarks Preservation Board – November 18, 2020
Adam S. Alsobrook, AIA

PRESENTATION TO THE LANDMARKS PRESERVATION BOARD

- § Site and Neighborhood Context
- § Exterior of the Thomas and Sarah Esther Bordeaux House
- § Foyer and Staircase – Bebb & Mendel, Architects, 1913
- § Historic Photographs
- § The Bordeaux Family
- § William D. Kimball, Architect
- § Bebb & Mendel, Architects
- § Harvey J. Allan, Builder
- § The Eclectic Tudor Revival and Queen Anne Architectural Style
- § Conclusion

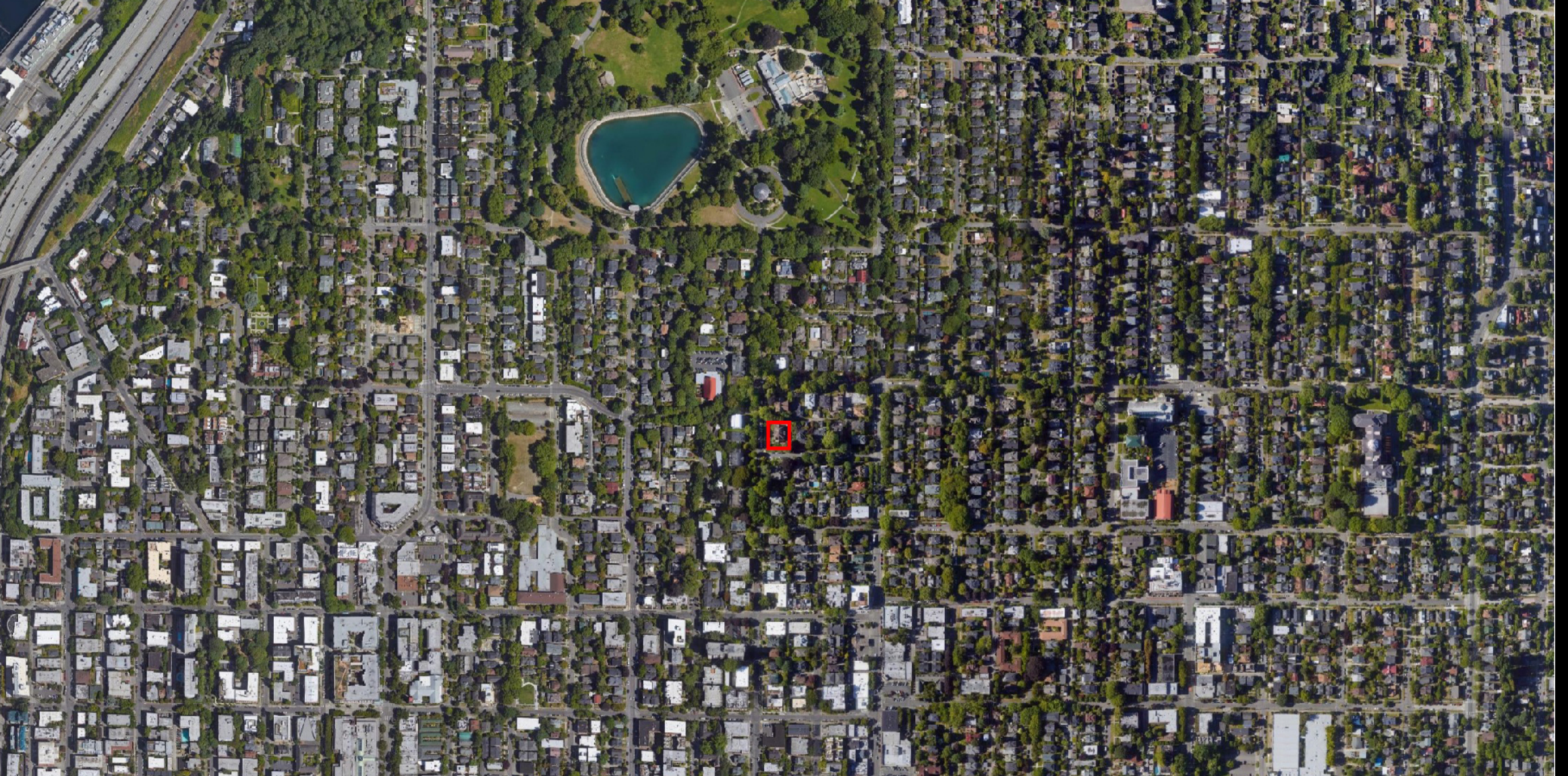
SITE AND NEIGHBORHOOD CONTEXT

SITE AND NEIGHBORHOOD CONTEXT



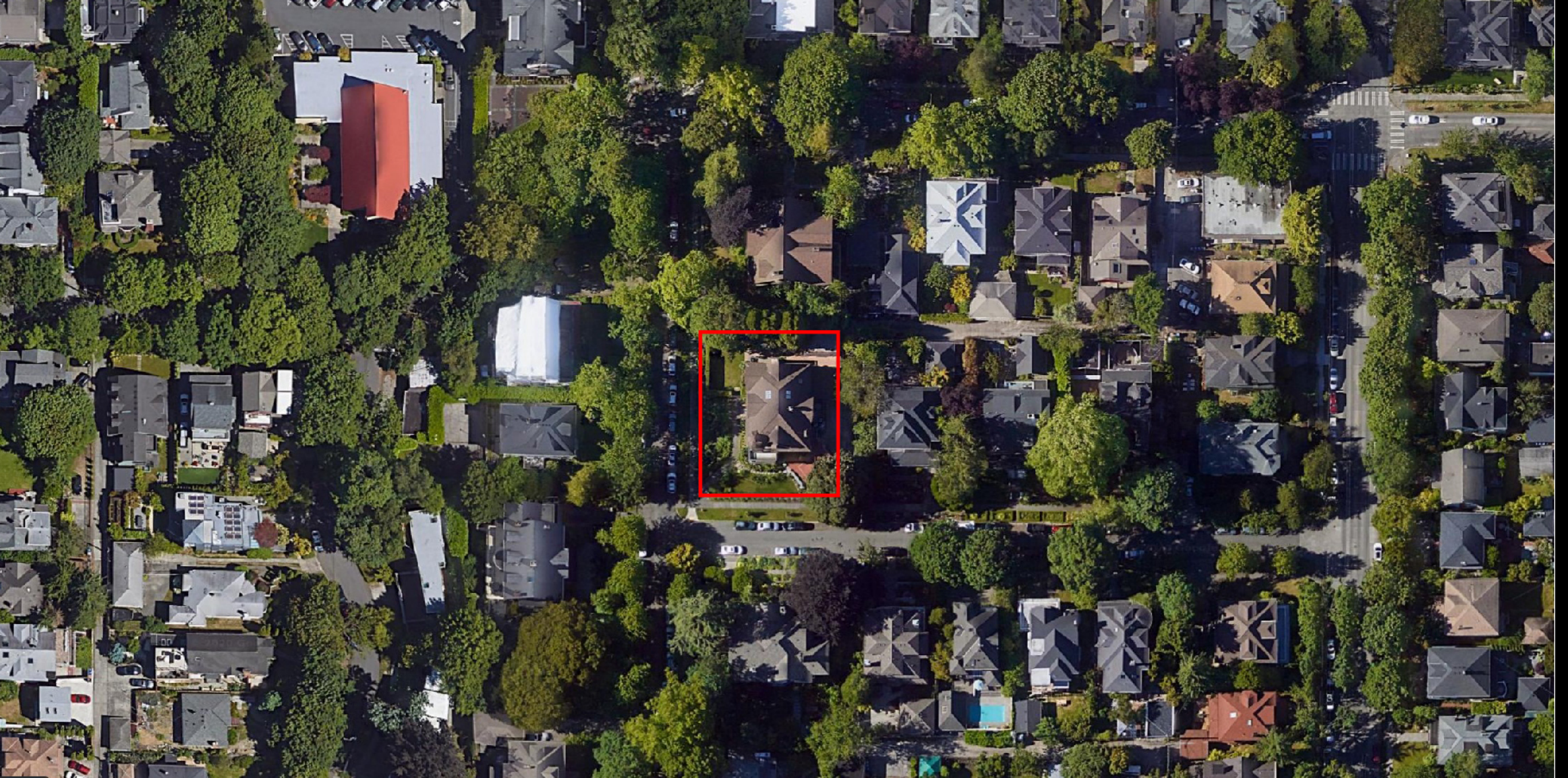
Red box indicates location of 806 Fourteenth Avenue East, Seattle, Washington. *Mapbox.*

SITE AND NEIGHBORHOOD CONTEXT



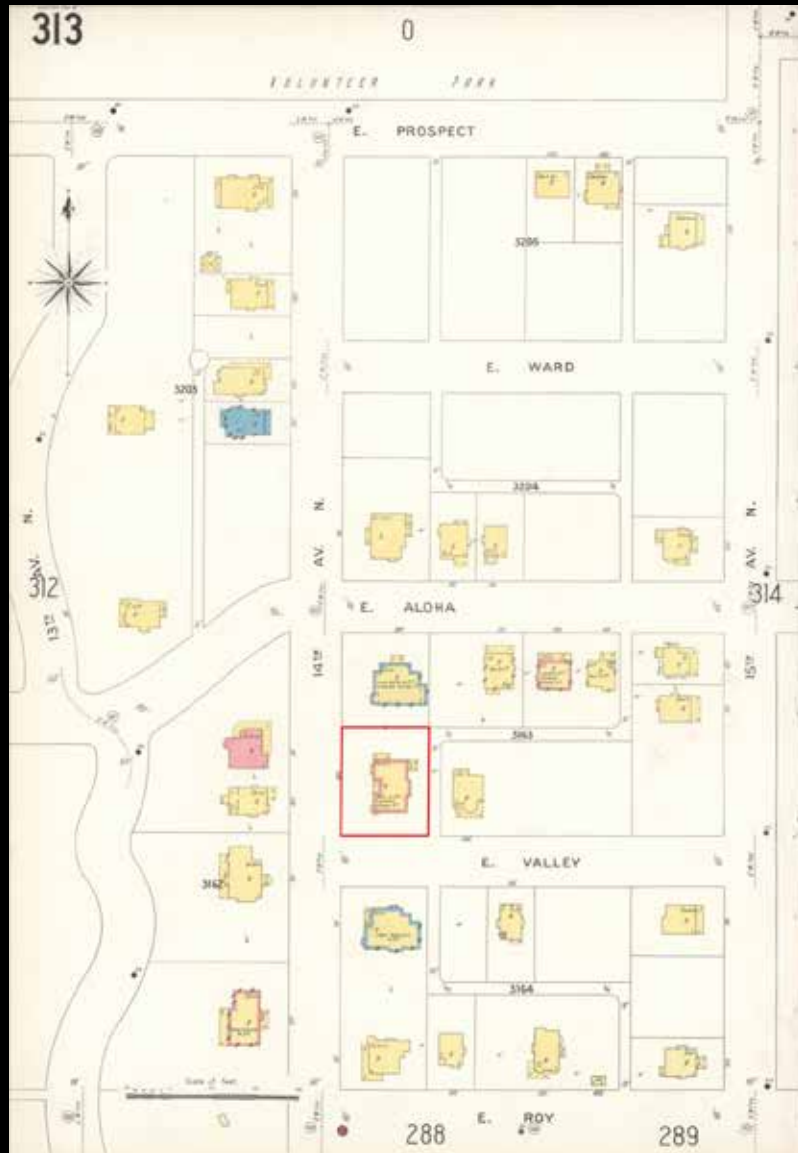
Red box indicates location of 806 Fourteenth Avenue East, Seattle, Washington. *Google Earth.*

SITE AND NEIGHBORHOOD CONTEXT

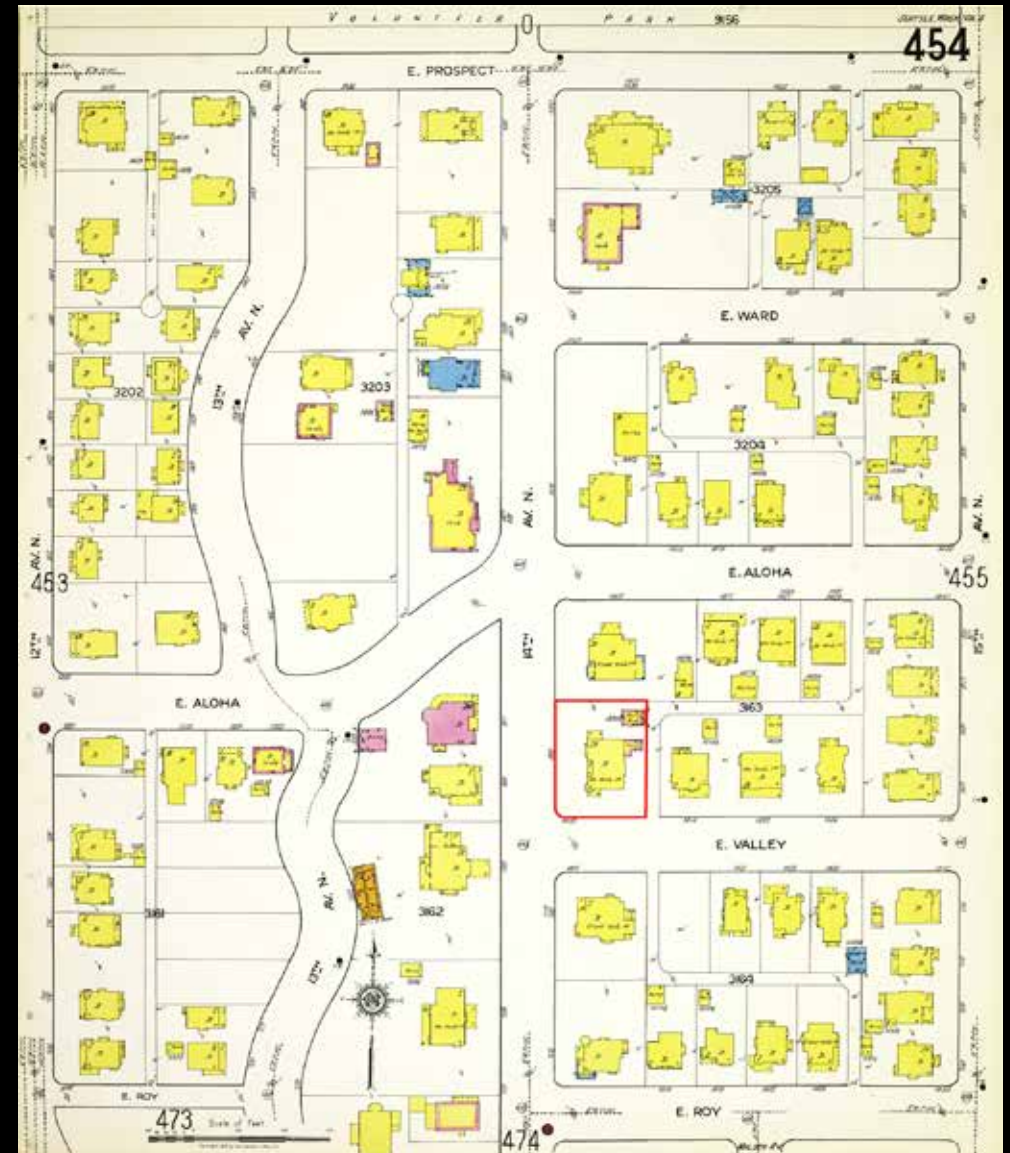


Red box indicates location of 806 Fourteenth Avenue East, Seattle, Washington. *Google Earth.*

SITE AND NEIGHBORHOOD CONTEXT

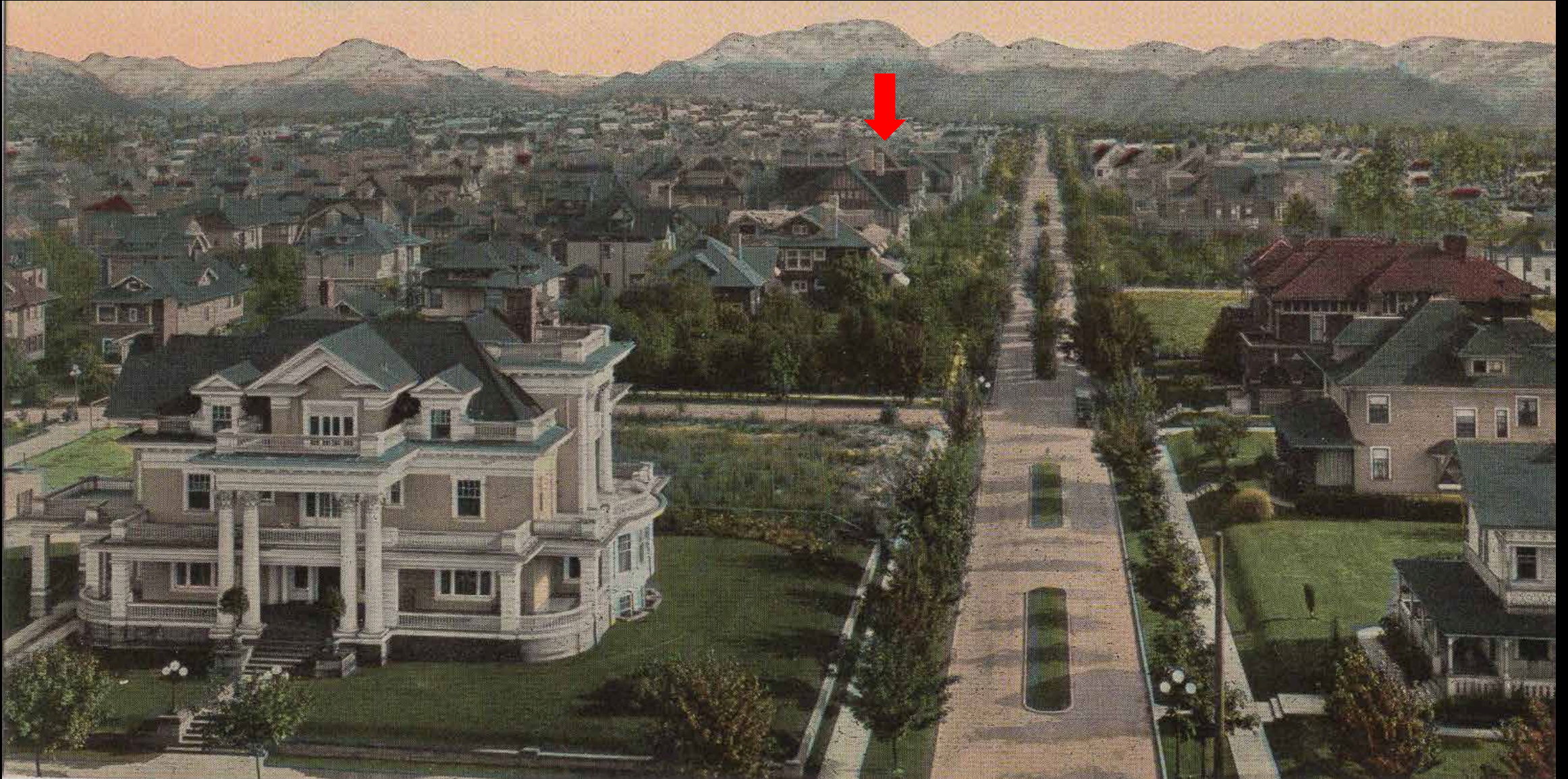


Sanborn fire insurance map, Volume 3, 1904-1905 (1905), Sheet 313. *Library of Congress.*



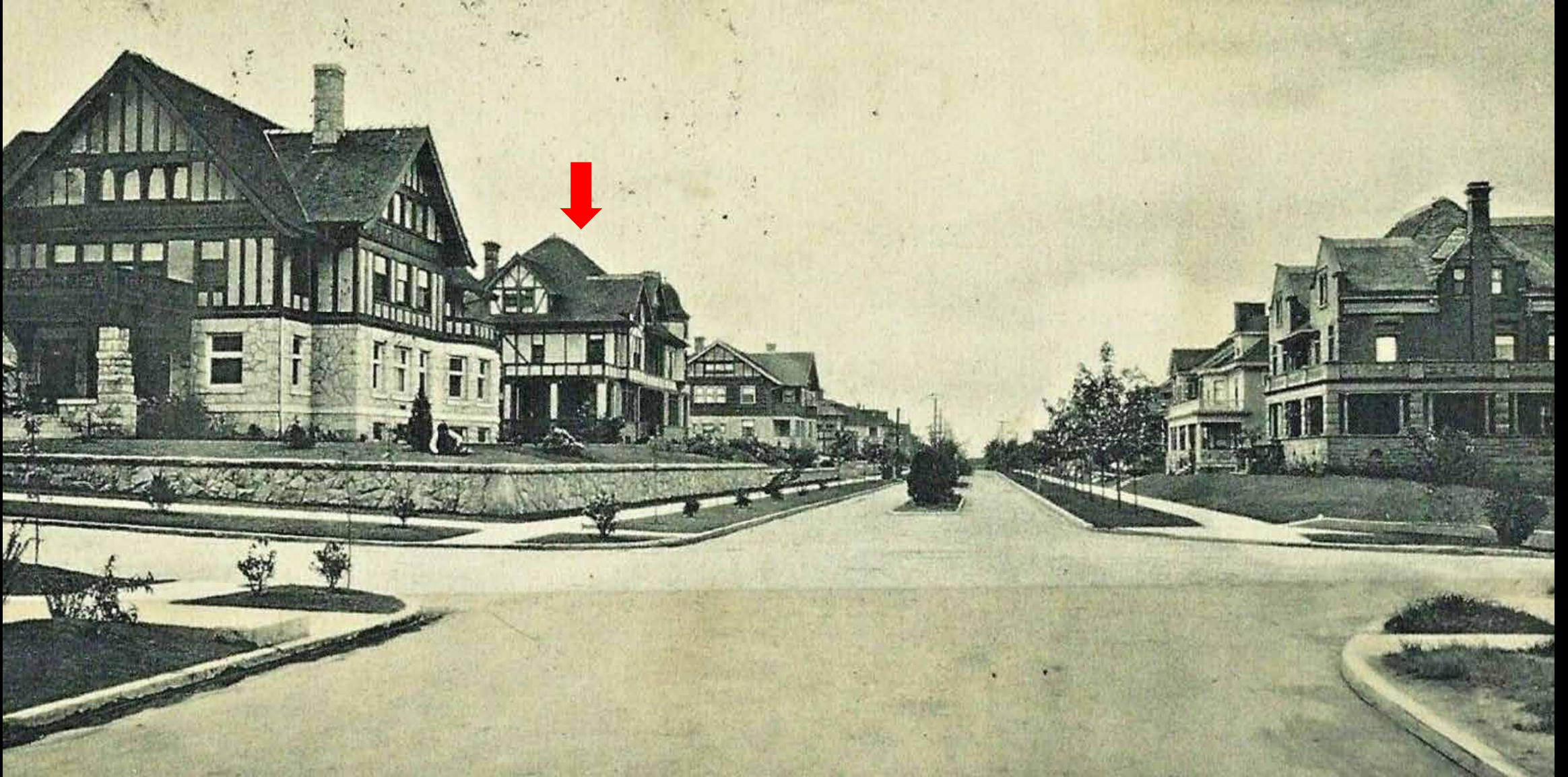
Sanborn fire insurance map, Volume 4, 1905-1950 (1917), Sheet 454. *Library of Congress.*

SITE AND NEIGHBORHOOD CONTEXT



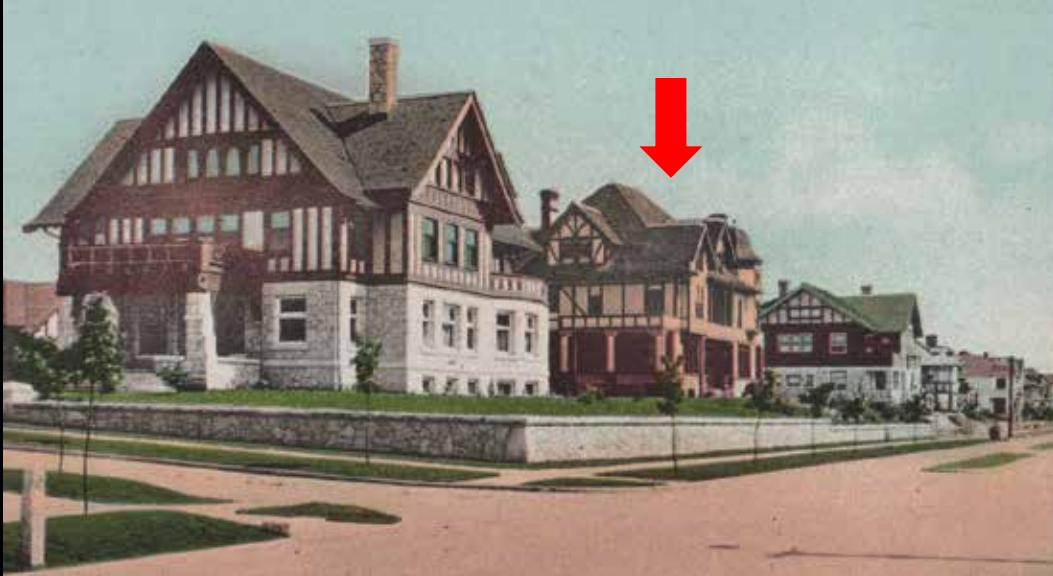
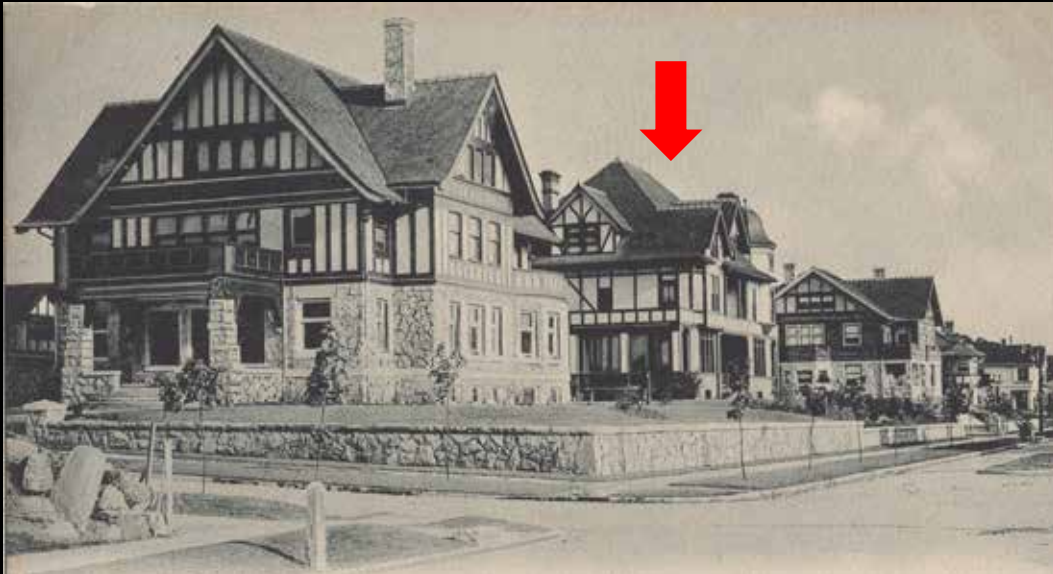
Postcard view of 14th Avenue East looking south from Volunteer Park water tower, circa 1907-1914. The Bordeaux House is marked with a red arrow.
Author's Collection.

SITE AND NEIGHBORHOOD CONTEXT



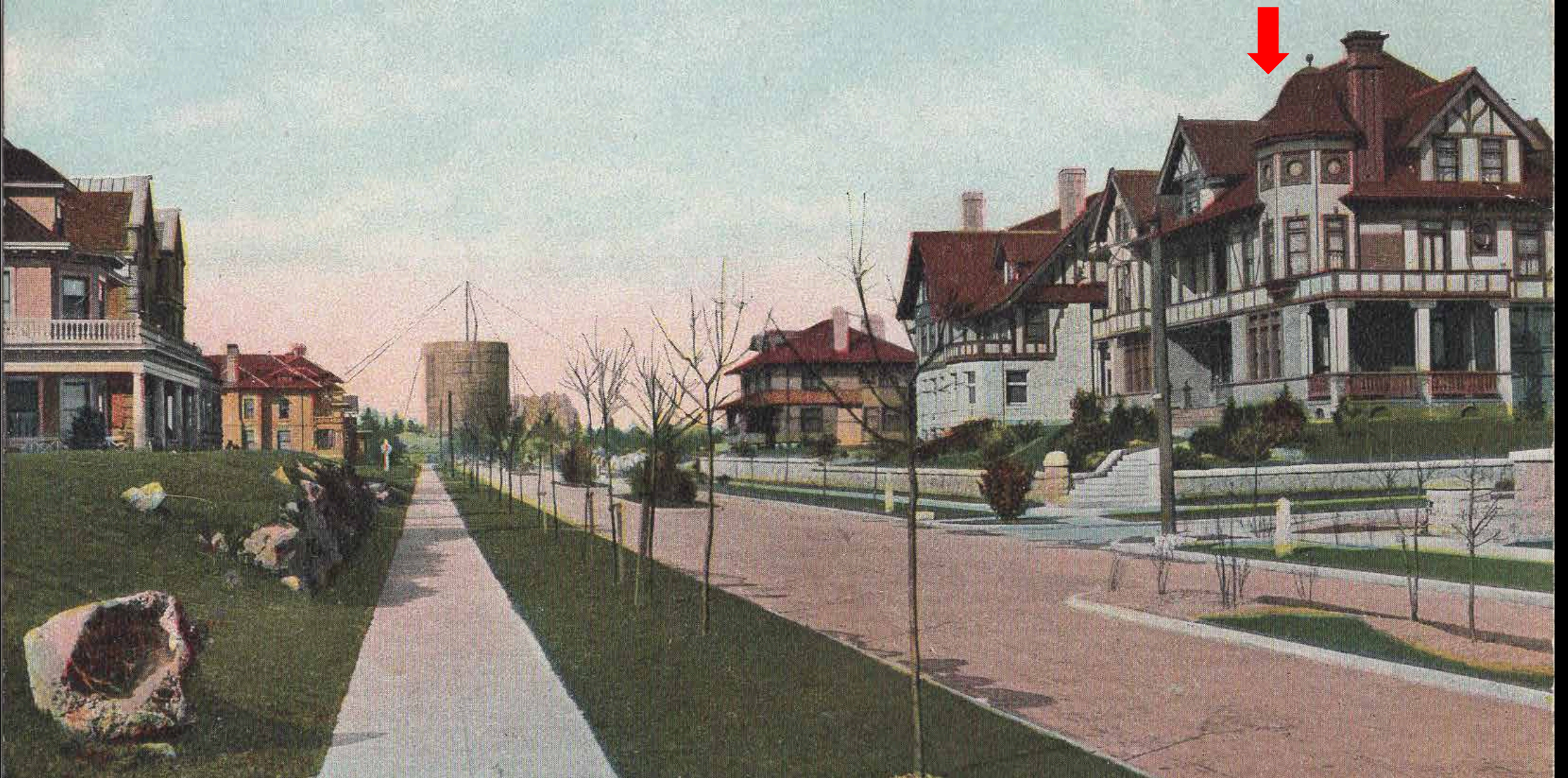
Postcard view of 14th Avenue East, circa 1907-1914. The Bordeaux House is marked with a red arrow.

SITE AND NEIGHBORHOOD CONTEXT



Postcard views of 14th Avenue East, circa 1907-1914. The Bordeaux House is marked with a red arrow. *Author's Collection.*

SITE AND NEIGHBORHOOD CONTEXT



Postcard view of 14th Avenue East looking north, circa 1907-1914. The Bordeaux House is marked with a red arrow. *Author's Collection.*

SITE AND NEIGHBORHOOD CONTEXT



View of 14th Avenue East looking north, 19 August 2019. The Bordeaux House is marked with a red arrow.

SITE AND NEIGHBORHOOD CONTEXT



View of 14th Avenue East looking south, 19 August 2019.

SITE AND NEIGHBORHOOD CONTEXT



View of intersection of 14th Avenue East and East Valley Street looking east, 19 August 2019. The Bordeaux House is marked with a red arrow.

SITE AND NEIGHBORHOOD CONTEXT



Andrew Weber House, 805 14th Avenue East, across 14th Avenue from the Bordeaux House (demolished), 19 August 2019.

SITE AND NEIGHBORHOOD CONTEXT



Former location of the Andrew Weber House, 805 14th Avenue East, 8 November 2020.

SITE AND NEIGHBORHOOD CONTEXT



East Valley Street immediately south of the Bordeaux House looking west, 19 August 2019.

SITE AND NEIGHBORHOOD CONTEXT



Charles H. Cobb House (1903, Bebb & Mendel, architects) immediately north of the Bordeaux House, 19 August 2019.

SITE AND NEIGHBORHOOD CONTEXT



House immediately to the east of the Bordeaux House, 19 August 2019.

SITE AND NEIGHBORHOOD CONTEXT



Elbridge A. Stuart House (1904, Bebb & Mendel, architects) immediately across East Valley Street, 19 August 2019.

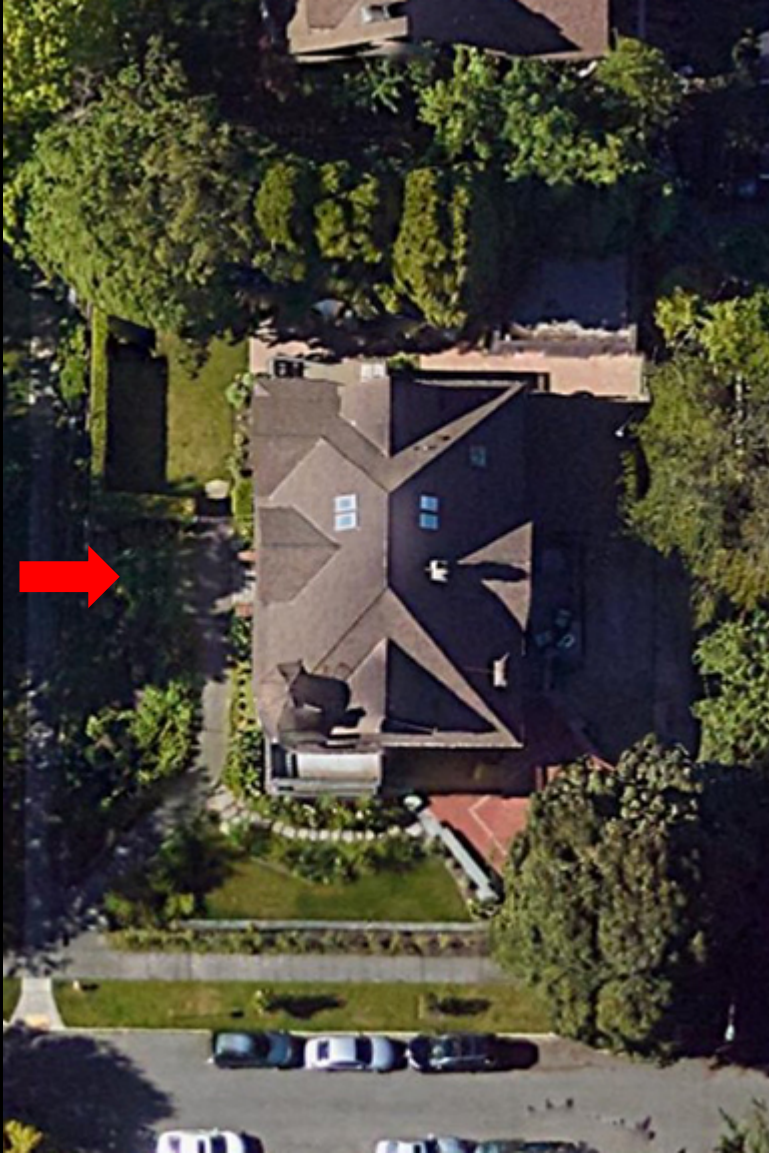
SITE AND NEIGHBORHOOD CONTEXT



James A. Moore House (1903, William D. Kimball, architect) across 14th Ave. E. from the Bordeaux House, 19 Aug. 2019.

EXTERIOR OF THE THOMAS AND SARAH ESTHER BORDEAUX HOUSE

EXTERIOR OF THE THOMAS AND SARAH ESTHER BORDEAUX HOUSE



Direction of view indicated by red arrow.



West elevation of the Bordeaux House, view looking east, 19 August 2019.

EXTERIOR OF THE THOMAS AND SARAH ESTHER BORDEAUX HOUSE



Direction of view indicated by red arrow.



West and south elevations of the Bordeaux House, oblique view looking northeast, 19 August 2019.

EXTERIOR OF THE THOMAS AND SARAH ESTHER BORDEAUX HOUSE

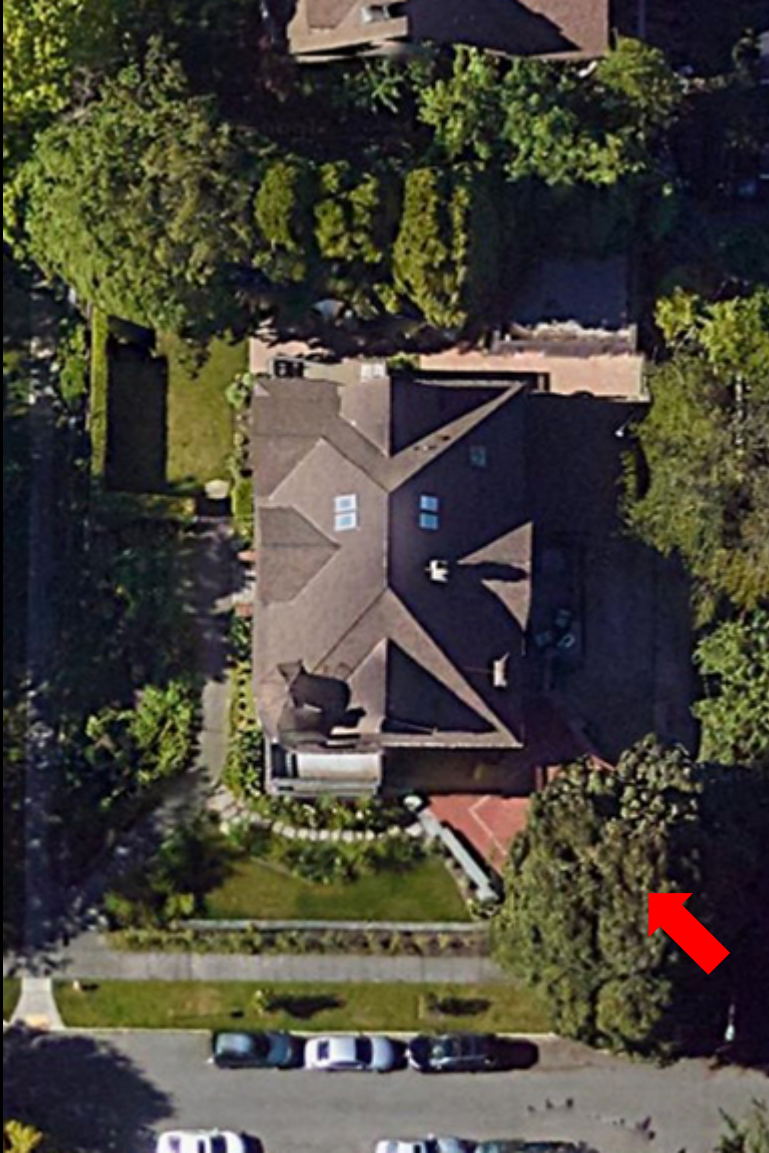


Direction of view indicated by red arrow.



South elevation of the Bordeaux House, view looking north, 19 August 2019.

EXTERIOR OF THE THOMAS AND SARAH ESTHER BORDEAUX HOUSE



Direction of view indicated by red arrow.



South and east elevations of the Bordeaux House, oblique view looking northwest, 19 August 2019.

EXTERIOR OF THE THOMAS AND SARAH ESTHER BORDEAUX HOUSE



Direction of view indicated by red arrow.



East elevation of the Bordeaux House, view looking west, 19 August 2019.

EXTERIOR OF THE THOMAS AND SARAH ESTHER BORDEAUX HOUSE



Direction of view indicated by red arrow.



East and north elevations of the Bordeaux House, oblique view looking southwest, 19 August 2019.

EXTERIOR OF THE THOMAS AND SARAH ESTHER BORDEAUX HOUSE

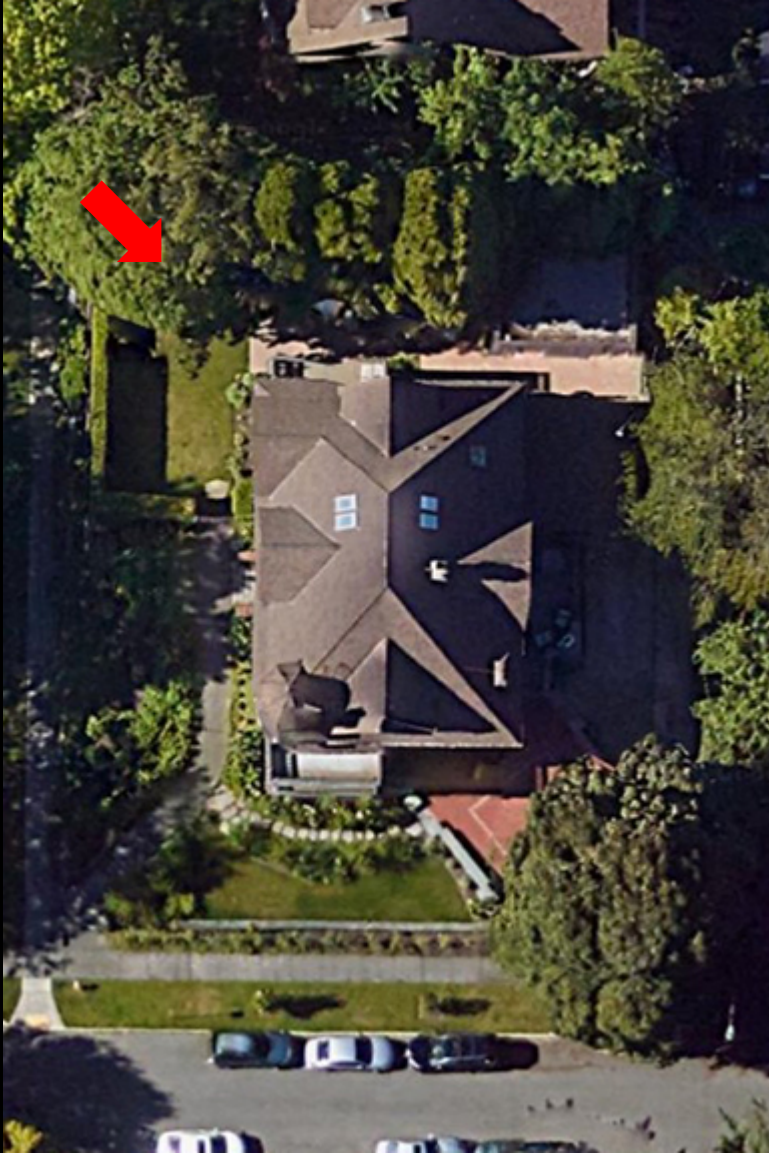


Direction of view indicated by red arrow.



North elevation of the Bordeaux House, view looking south, 19 August 2019.

EXTERIOR OF THE THOMAS AND SARAH ESTHER BORDEAUX HOUSE



Direction of view indicated by red arrow.



North and west elevations of the Bordeaux House, oblique view looking southeast, 19 August 2019.

EXTERIOR OF THE THOMAS AND SARAH ESTHER BORDEAUX HOUSE



Direction of view indicated by red arrow.



Detail view of the entry steps, cheek walls, recessed porch, and front door, 19 August 2019.

EXTERIOR OF THE THOMAS AND SARAH ESTHER BORDEAUX HOUSE



Direction of view indicated by red arrow.



Detail view of the entry porch and recessed porch at second level, 19 August 2019.

EXTERIOR OF THE THOMAS AND SARAH ESTHER BORDEAUX HOUSE



Direction of view indicated by red arrow.



Detail view of turret at southwest corner of the second level, 19 August 2019.

EXTERIOR OF THE THOMAS AND SARAH ESTHER BORDEAUX HOUSE



Direction of view indicated by red arrow.



Detail view of the oval window, eaves, turret, and chimney at the south elevation, 19 August 2019.

FOYER AND STAIRCASE – BEBB & MENDEL, ARCHITECTS, 1913



View of the foyer and staircase, view looking northeast, 19 August 2019.



View of the foyer and staircase, view looking northwest, 19 August 2019.

FOYER AND STAIRCASE – BEBB & MENDEL, ARCHITECTS, 1913



View of the foyer and staircase, view looking east, 19 August 2019.



View of the foyer and staircase, view looking south, 19 August 2019.

FOYER AND STAIRCASE – BEBB & MENDEL, ARCHITECTS, 1913



View of the foyer and staircase, view looking west, 19 August 2019.



View of the staircase, view looking north from second level, 19 August 2019.

HISTORIC PHOTOGRAPHS

HISTORIC PHOTOGRAPHS



Direction of view indicated by red arrow.



Historic photograph of the Bordeaux House, circa 1905. *Courtesy Collection of Scott and Katie Renschler.*

HISTORIC PHOTOGRAPHS



Direction of view indicated by red arrow.



Historic photograph of the Bordeaux House, circa 1905-1913. *Homes and Gardens of the Pacific Coast, Volume 1: Seattle, 1913.*

HISTORIC PHOTOGRAPHS

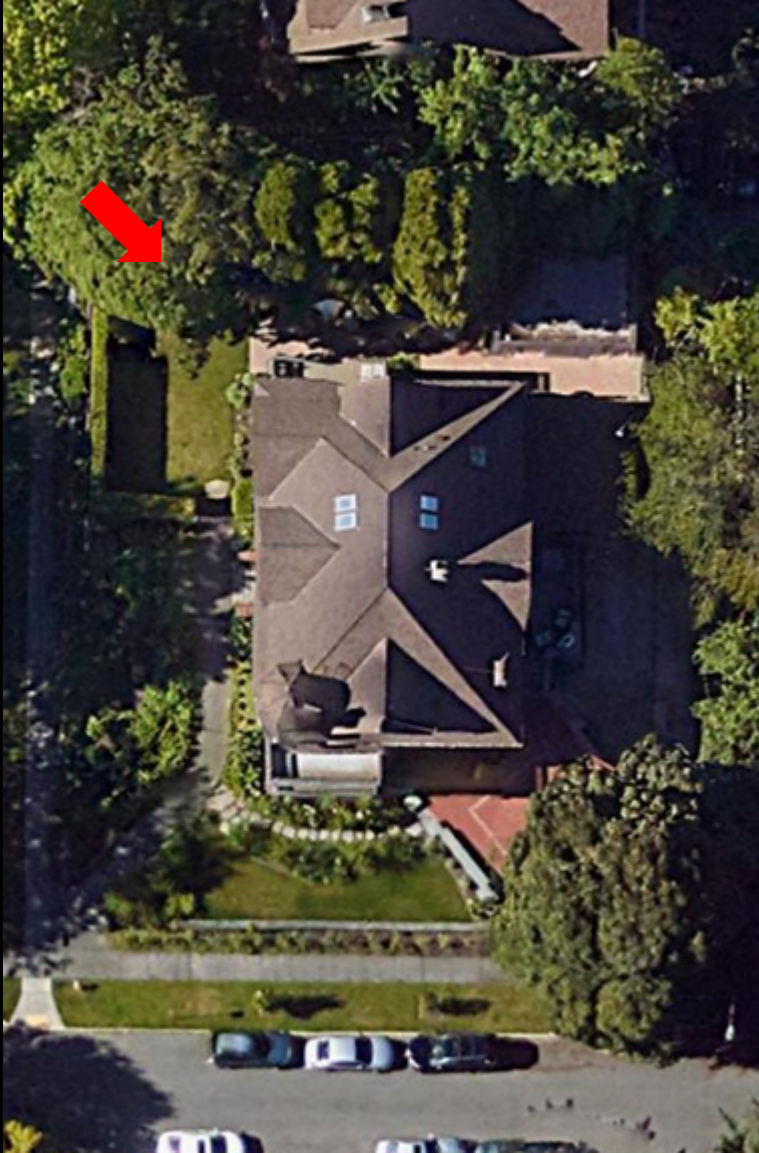


Direction of view indicated by red arrow.



Historic photograph of the Bordeaux House, 1905. *Published in The Mason County Journal, Special 1905 Edition, August 1905, courtesy of Liz Arbaugh, director of the Mason County Historical Society.*

HISTORIC PHOTOGRAPHS



Direction of view indicated by red arrow.



Detail view of the north elevation of the Bordeaux House, circa 1906. *Bebb & Mendel Catalog, 1906, Seattle Public Library.*

REAL PROPERTY RECORD CARD PHOTOGRAPH



Direction of view indicated by red arrow.



Historic photograph of the Bordeaux House, 1937. *Real Property Record Cards of King County, Puget Sound Regional Archives.*

THE BORDEAUX FAMILY

THOMAS AND MARY RITNER BORDEAUX



Thomas Bordeaux and his first wife, Mary Ritner Bordeaux, circa late 1880s-early 1890s. *Courtesy of Liz Arbaugh, director of the Mason County Historical Society.*



Bordeaux House in Shelton, Washington, photograph circa 1909, when his brother Gilbert Bordeaux resided there (status unknown) [Olsen, Susan and Mary Randlett, *An Illustrated History of Mason County, Washington*. Mason County Senior Center: Shelton, 1978.]

THOMAS AND SARAH ESTHER BORDEAUX



Left image: Sarah Esther "Essie" Webb Bordeaux, circa 1900. *Courtesy of Liz Arbaugh, director of the Mason County Historical Society.*

Center image: Thomas Bordeaux later in life, circa late 1910s-early 1920s. *Courtesy Collection of Scott and Katie Renschler.*

Above image: Hotel Webb, Shelton, Washington, photograph circa 1901 (burned). *Pan-American Exposition Supplement to the Mason County Journal. Shelton, Washington, 1901, p. 21.*

THOMAS AND SARAH ESTHER BORDEAUX



Massive heavy timber beams produced by the Mumby Lumber & Shingle Company, Bordeaux, Washington. Photograph circa 1910-1920. *Washington State Historical Society, Catalog #2004.0.991.*



Photograph of the Bordeaux Summer Cottage at Bordeaux, Washington (extant). *Washington State Department of Archaeology and Historic Preservation (DAHP).*

WILLIAM D. KIMBALL, ARCHITECT

WILLIAM D. KIMBALL, ARCHITECT



William D. Kimball in 1907.
Seattle of To-day, National
Publishing (1907): p. 203.



James A. Moore Residence, 811 Fourteenth Ave. E., Seattle.
(1903; extant), circa 1937, *Puget Sound Regional Archives*,
www.millionairesrow.net.



Fred Rowell Residence, 925 Fourteenth Ave. E., Seattle.
(1903; extant), circa 1937, *Puget Sound Regional Archives*,
www.millionairesrow.net.

BEBB & MENDEL, ARCHITECTS

BEBB & MENDEL, ARCHITECTS



Charles H. Bebb, *Pacific Builder and Engineer*, 17 January 1914, p. 32.



Louis L. Mendel, *Pacific Builder and Engineer*, 21 March 1914, p. 175.



Charles H. Cobb House, 1409 East Aloha Street, Seattle (1903; Bebb & Mendel, architects; extant) *Homes and Gardens of the Pacific Coast, Volume 1: Seattle*, 1913.

BEBB & MENDEL, ARCHITECTS



Charles H. Bebb, *Pacific Builder and Engineer*, 17 January 1914, p. 32.



Louis L. Mendel, *Pacific Builder and Engineer*, 21 March 1914, p. 175.



Elbridge A. Stuart House, 720 14th Avenue East (1904; Bebb & Mendel, architects; extant), circa 1937, *Puget Sound Regional Archives*, www.millionairesrow.net.

BEBB & MENDEL, ARCHITECTS



Charles H. Bebb, *Pacific Builder and Engineer*, 17 January 1914, p. 32.



Louis L. Mendel, *Pacific Builder and Engineer*, 21 March 1914, p. 175.



Shafer Baillie Mansion, 907 14th Avenue East (1913; Bebb & Mendel, architects; extant), circa 1937, *Puget Sound Regional Archives*, www.millionairesrow.net.

BEBB & MENDEL, ARCHITECTS



Charles H. Bebb, *Pacific Builder and Engineer*, 17 January 1914, p. 32.



Louis L. Mendel, *Pacific Builder and Engineer*, 21 March 1914, p. 175.



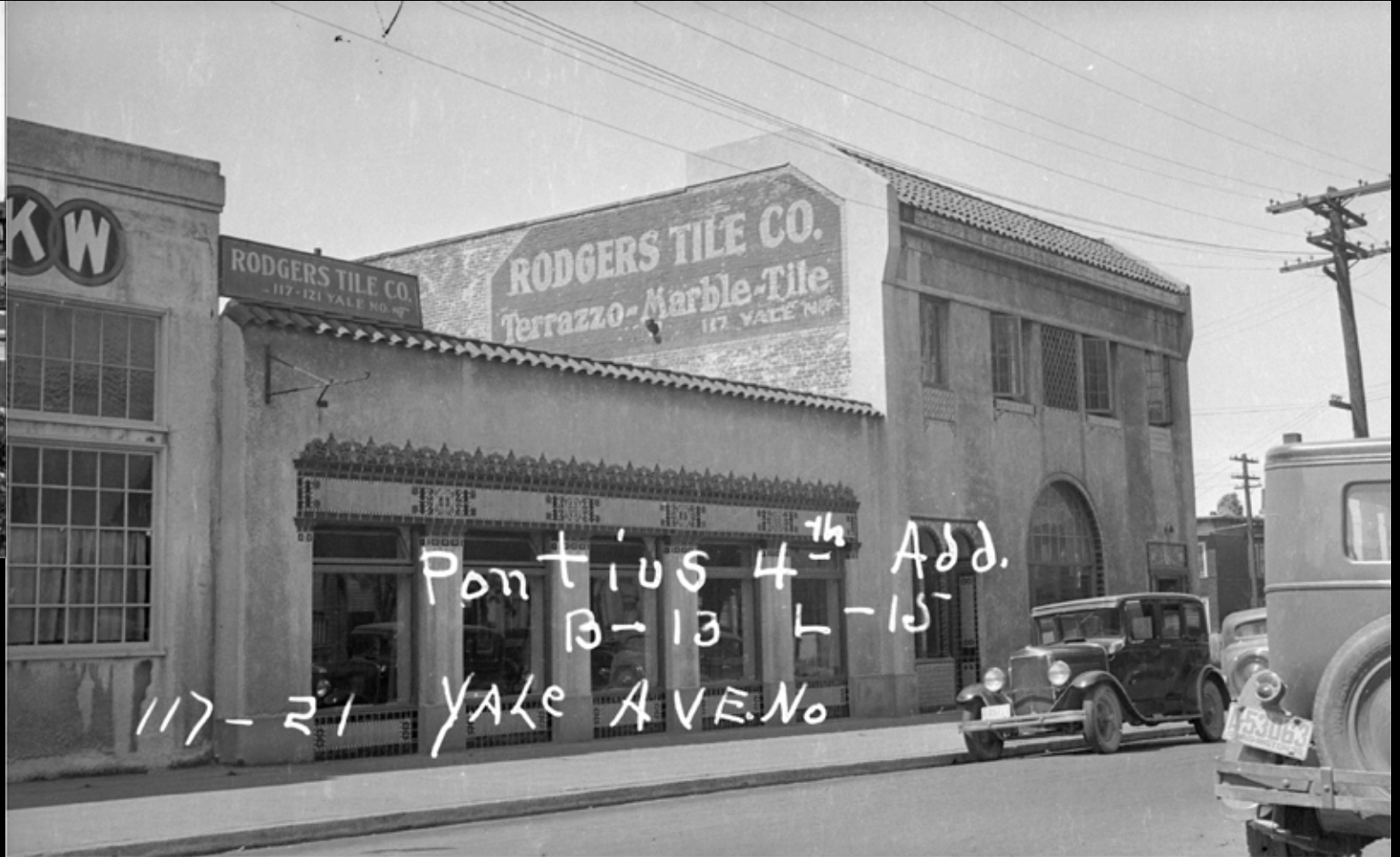
Chester White House, 906 14th Avenue East (1904; Bebb & Mendel, architects; extant), circa 1937, *Puget Sound Regional Archives*, www.millionairesrow.net.

HARVEY J. ALLAN, BUILDER

HARVEY J. ALLAN, BUILDER



Exterior view of the R.D. Merrill House, Garden Facade, Seattle, WA, c. 1913. *From the University of Washington Libraries, Special Collections Division, Seattle Photograph Collection, Item #SEA0842, photo by Asahel Curtis. Pacific Coast Architecture Database/Public Domain.*



Pacific Telephone and Telegraph Company garage, 1917 (2-story portion of building). Edwin Ivey, architect, Harvey J. Allan, builder, circa 1937, demolished. *Puget Sound Regional Archives, City of Seattle Landmark Nomination for the Rodgers Tile Building, 2016, by David Peterson.*

HARVEY J. ALLAN, BUILDER



Harvey and Sallie Fetter House, 1051 East Galer Street, 1918. Carl Gould, architect; Harvey J. Allan, builder. Photo 2005, *City of Seattle Historic Sites Database*.



Washington Shoe Manufacturing Company, southeast corner of Seventh Avenue and Snoqualmie Street, 1907. Andrew McBean, architect; Harvey J. Allan, builder. *Seattle Sunday Times*, 27 January 1907, p. 57.

THE ECLECTIC TUDOR REVIVAL AND QUEEN ANNE ARCHITECTURAL STYLE

THE ECLECTIC TUDOR REVIVAL AND QUEEN ANNE ARCHITECTURAL STYLE

Stimson-Rogers House at 128 Aloha Street in Queen Anne (1888; demolished) *Queen Anne Historical Society online.*



Patrick J. Sullivan House (1898; Josenhans & Allan, architects; demolished) *Seattle of Today Architecturally, 1905.*

Herren House, 1603 45th Avenue SW, Seattle (1891; extant) *Seattle Department of Neighborhoods Historic Sites Survey Database online.*



Gessner/Dr. Corson House, 6420 Carleton Avenue South, Seattle (1902; extant) *Google Streetview.*

THE ECLECTIC TUDOR REVIVAL AND QUEEN ANNE ARCHITECTURAL STYLE

Charles H. Black House, 613 West Lee Street, Seattle (1906; Bebb & Mendel, architects; extant; City of Seattle landmark). *Homes and Gardens of the Pacific Coast, Volume 1: Seattle, 1913.*



John A. Campbell House, 618 36th Avenue East, Seattle (1908; Bebb & Mendel, architects; extant). *Homes and Gardens of the Pacific Coast, Volume 1: Seattle, 1913.*



O.D. Fisher House, 1047 Belmont Place, Seattle (1909; Beezer Brothers; extant). *Homes and Gardens of the Pacific Coast, Volume 1: Seattle, 1913.*



Samuel S. Loeb House (now the Shafer Baillie Mansion), 907 14th Avenue East (1913; Bebb & Mendel, architects; extant). *Seattle Municipal Archives, Image #182358.*

THE ECLECTIC TUDOR REVIVAL AND QUEEN ANNE ARCHITECTURAL STYLE



CONCLUSION

CONCLUSION

Criterion A: *It is the location of, or is associated in a significant way with, a historic event with a significant effect upon the community, City, state, or nation; or*

Criterion B: *It is associated in a significant way with the life of a person important in the history of the City, state, or nation; or*

Criterion C: *It is associated in a significant way with a significant aspect of the cultural, political, or economic heritage of the community, City, state or nation; or*

Criterion D: *It embodies the distinctive visible characteristics of an architectural style, or period, or a method of construction; or*

Criterion E: *It is an outstanding work of a designer or builder; or*

Criterion F: *Because of its prominence of spatial location, contrasts of siting, age, or scale, it is an easily identifiable visual feature of its neighborhood or the city and contributes to the distinctive quality or identity of such neighborhood or the City.*

In addition to meeting at least one of the above standards, the object, site, or improvement must also possess integrity or the ability to convey its significance.