



The Thomas and Sarah Esther Bordeaux House  
806 Fourteenth Avenue East, Seattle, Washington

Presentation to the Landmarks Preservation Board – January 6, 2021  
Adam S. Alsobrook, AIA

## THOMAS AND SARAH ESTHER BORDEAUX HOUSE

Recap of Previous Presentation: November 18, 2020

- § Neighborhood Context
- § Thomas and Sarah Esther Bordeaux
- § William D. Kimball, Architect
- § Bebb & Mendel, Architects
- § Harvey J. Allan, Builder
- § Historic Photographs

Presentation to the Landmarks Preservation Board: January 6, 2021

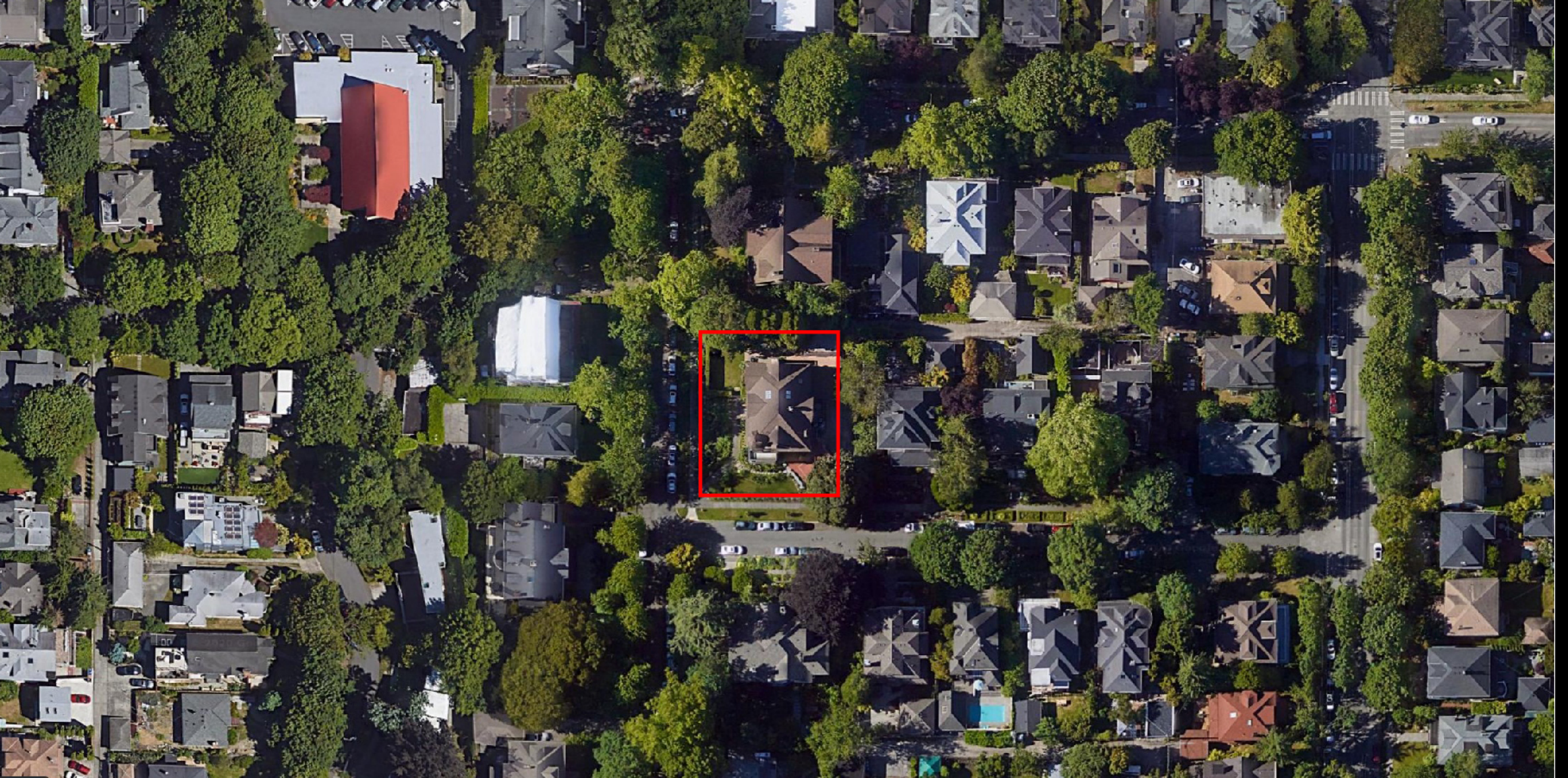
- § Site
- § Exterior
- § Garage
- § Foyer and Staircase
- § Living Room
- § Dining Room
- § Conclusion

RECAP OF PREVIOUS PRESENTATION: NOVEMBER 18, 2020

## NEIGHBORHOOD CONTEXT



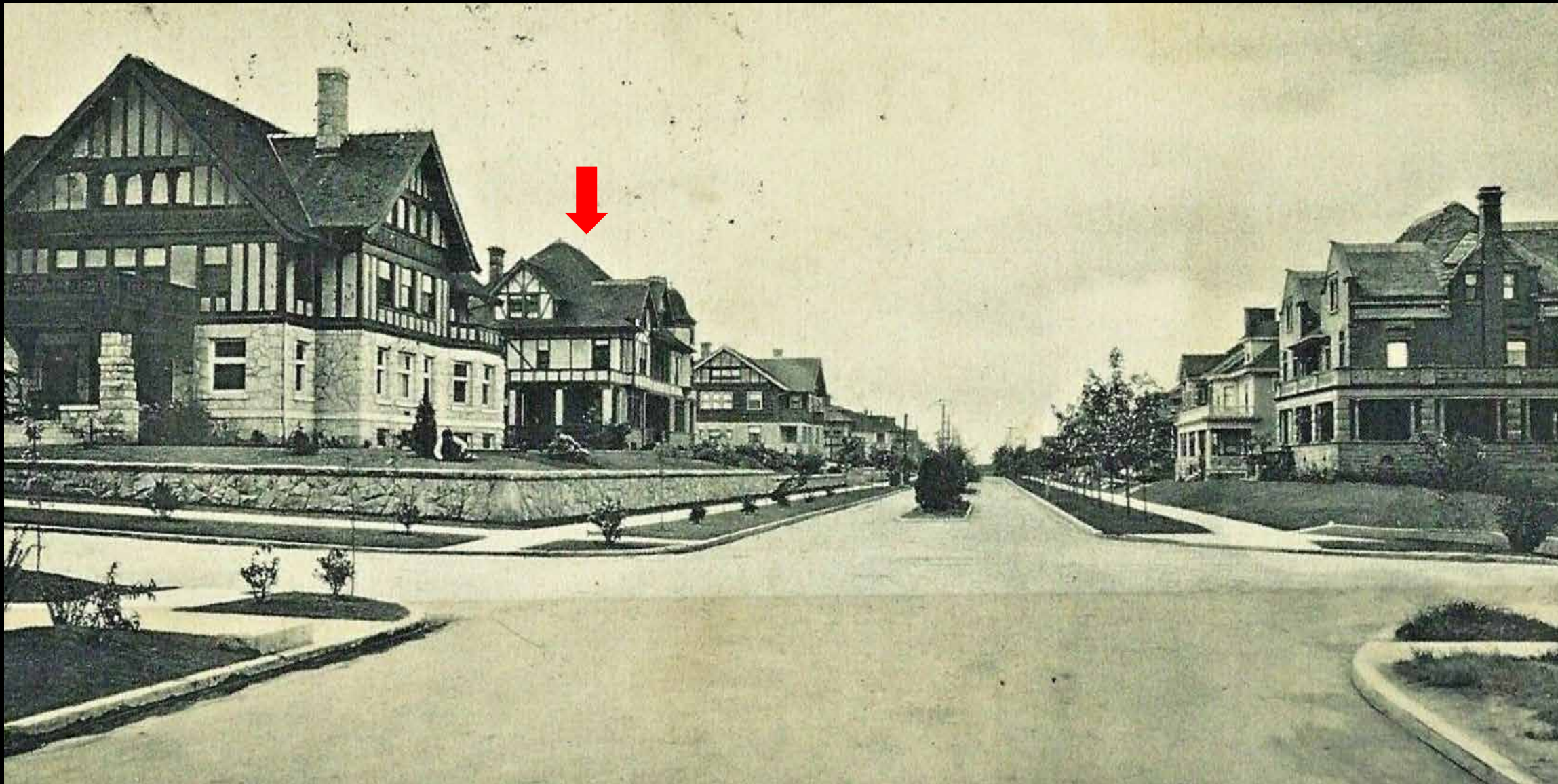
## NEIGHBORHOOD CONTEXT



Red box indicates location of 806 Fourteenth Avenue East, Seattle, Washington. *Google Earth.*



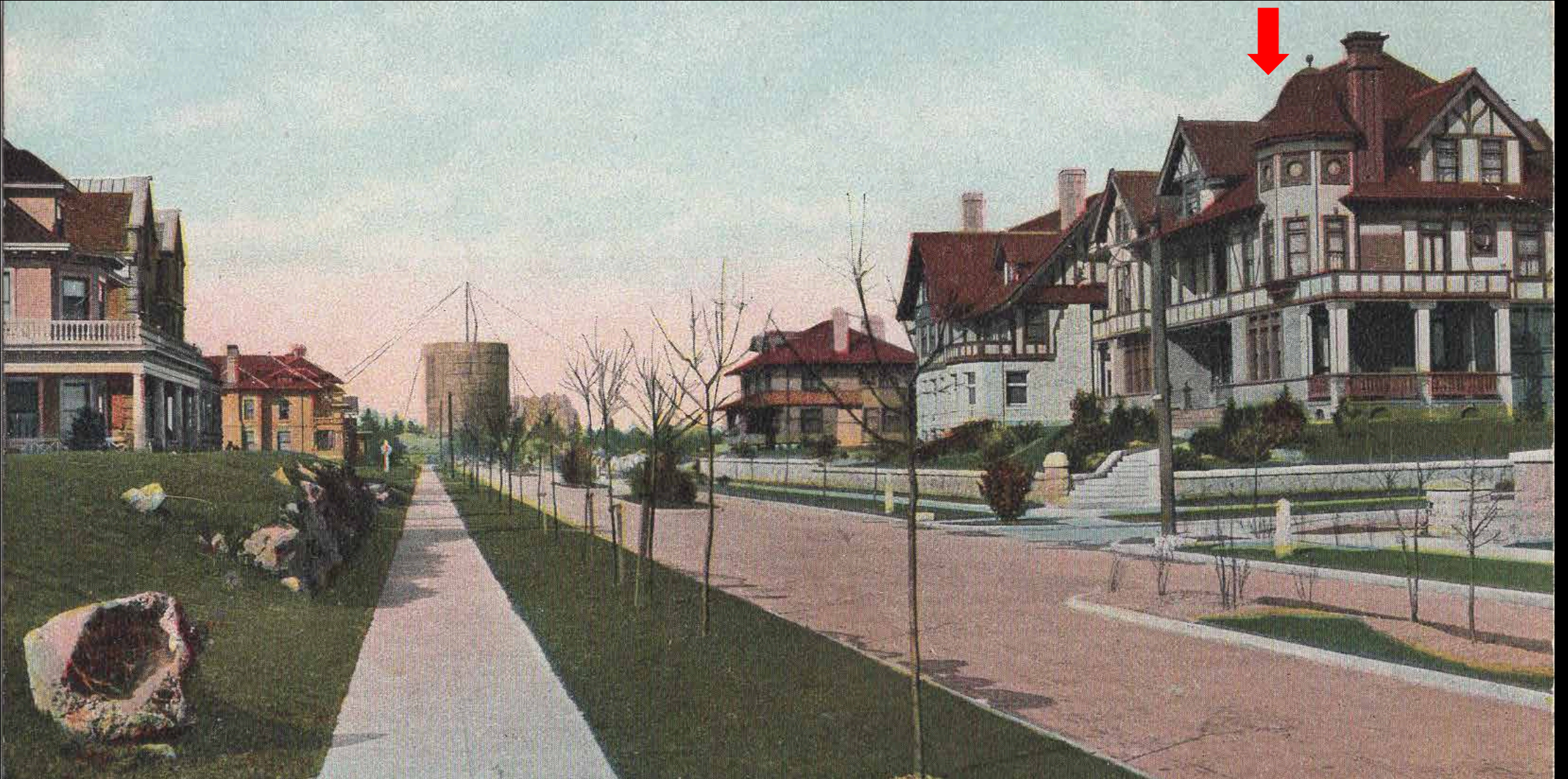
## NEIGHBORHOOD CONTEXT



Postcard view of 14<sup>th</sup> Avenue East, circa 1907-1914. The Bordeaux House is marked with a red arrow.



## NEIGHBORHOOD CONTEXT



Postcard view of 14<sup>th</sup> Avenue East looking north, circa 1907-1914. The Bordeaux House is marked with a red arrow. *Author's Collection.*



## NEIGHBORHOOD CONTEXT



View of 14<sup>th</sup> Avenue East looking north, 19 August 2019. The Bordeaux House is marked with a red arrow.



## NEIGHBORHOOD CONTEXT



Former location of the Andrew Weber House, 805 14<sup>th</sup> Avenue East, 8 November 2020.



## NEIGHBORHOOD CONTEXT



James A. Moore House (1903, William D. Kimball, architect) across 14<sup>th</sup> Ave. E. from the Bordeaux House, 19 Aug. 2019.



## NEIGHBORHOOD CONTEXT



Charles H. Cobb House (1903, Bebb & Mendel, architects) immediately north of the Bordeaux House, 19 August 2019.



## NEIGHBORHOOD CONTEXT



Elbridge A. Stuart House (1904, Bebb & Mendel, architects) immediately across East Valley Street, 19 August 2019.



THOMAS AND SARAH ESTHER BORDEAUX

# THOMAS AND SARAH ESTHER BORDEAUX



9-16 10 Capital Hill Proposals

THE CITY OF SEATTLE  
Board of Public Works

Office of INSPECTOR OF BUILDINGS

Permit No. 21562

Place Filed by J. D. Kimball

Official No. 8460

Permission is hereby requested by Thos. Bordeaux

to Build at No. 806 14th Ave N.

on Lot 2 Block 2 Addition to the City of Seattle

Specifications 2 story frame Residence

40'6" x 55'10"

Chimneys 2 as per sec 103.104 Ord 7040

NOTIFY OFFICE WHEN READY TO LATH

Chimneys Fireplaces Estimated to cost \$17000

I agree to remove all rubbish from street and walks each Saturday before 6 o'clock p. m.

Is street graded? yes

Deposit made \$100

By Request of J. Allan

Permission is hereby given as above for 140 days to do the work described in application attached, and which is an essential part of this permit.

CHARGES FOR CITY WATER

24 M Brick laid at 15c per M

Plastering at 80c per 100 yds.

100 yds. Cement at 10c per bbl.

INDEX CARD

R. H. Thompson

Per. J. Allan

Left image: Sarah Esther "Essie" Webb Bordeaux, circa 1900. *Courtesy of Liz Arbaugh, director of the Mason County Historical Society.*

Center image: Thomas Bordeaux later in life, circa late 1910s-early 1920s. *Courtesy Collection of Scott and Katie Renschler.*

Above image: City of Seattle building permit 21562, issued on July 16, 1903. William D. Kimball, architect; Harvey J. Allan, builder.

WILLIAM D. KIMBALL, ARCHITECT

## WILLIAM D. KIMBALL, ARCHITECT



William D. Kimball in 1907.  
*Seattle of To-day*, National  
Publishing (1907): p. 203.



James A. Moore Residence, 811 Fourteenth Ave. E., Seattle.  
(1903; extant), circa 1937, *Puget Sound Regional Archives*,  
[www.millionairesrow.net](http://www.millionairesrow.net).



Fred Rowell Residence, 925 Fourteenth Ave. E., Seattle.  
(1903; extant), circa 1937, *Puget Sound Regional Archives*,  
[www.millionairesrow.net](http://www.millionairesrow.net).

BEBB & MENDEL, ARCHITECTS



## BEBB & MENDEL, ARCHITECTS



Charles H. Bebb, *Pacific Builder and Engineer*, 17 January 1914, p. 32.



Louis L. Mendel, *Pacific Builder and Engineer*, 21 March 1914, p. 175.



Charles H. Cobb House, 1409 East Aloha Street, Seattle (1903; Bebb & Mendel, architects; extant) *Homes and Gardens of the Pacific Coast, Volume 1: Seattle*, 1913.

## BEBB & MENDEL, ARCHITECTS



Charles H. Bebb, *Pacific Builder and Engineer*, 17 January 1914, p. 32.



Louis L. Mendel, *Pacific Builder and Engineer*, 21 March 1914, p. 175.



Elbridge A. Stuart House, 720 14<sup>th</sup> Avenue East (1904; Bebb & Mendel, architects; extant), circa 1937, *Puget Sound Regional Archives*, [www.millionairesrow.net](http://www.millionairesrow.net).



## BEBB & MENDEL, ARCHITECTS



Charles H. Bebb, *Pacific Builder and Engineer*, 17 January 1914, p. 32.



Louis L. Mendel, *Pacific Builder and Engineer*, 21 March 1914, p. 175.



Shafer Baillie Mansion, 907 14<sup>th</sup> Avenue East (1913; Bebb & Mendel, architects; extant), circa 1937, *Puget Sound Regional Archives*, [www.millionairesrow.net](http://www.millionairesrow.net).



## BEBB & MENDEL, ARCHITECTS



Charles H. Bebb, *Pacific Builder and Engineer*, 17 January 1914, p. 32.



Louis L. Mendel, *Pacific Builder and Engineer*, 21 March 1914, p. 175.



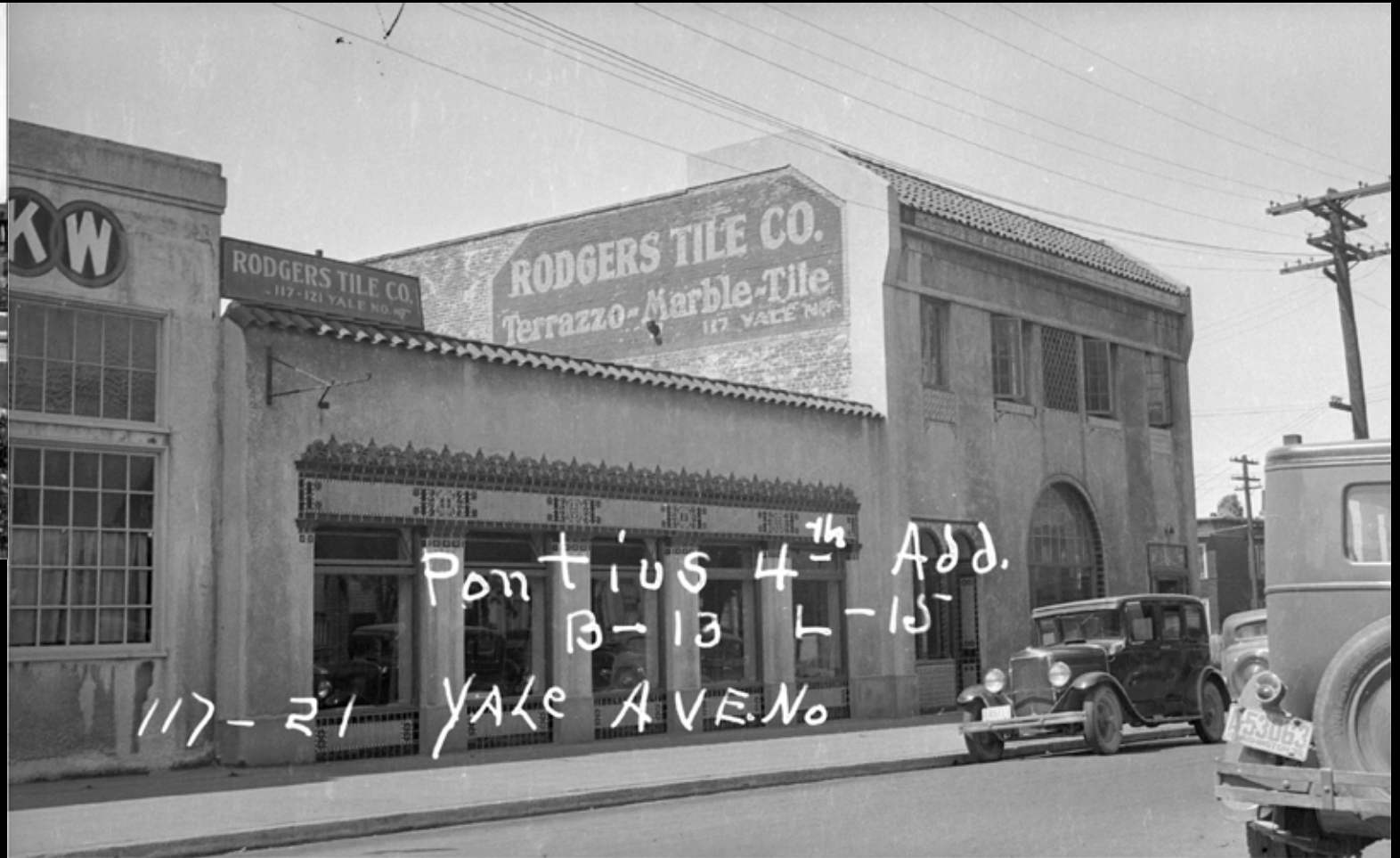
Chester White House, 906 14<sup>th</sup> Avenue East (1904; Bebb & Mendel, architects; extant), circa 1937, *Puget Sound Regional Archives*, [www.millionairesrow.net](http://www.millionairesrow.net).

HARVEY J. ALLAN, BUILDER

## HARVEY J. ALLAN, BUILDER



Exterior view of the R.D. Merrill House, Garden Facade, Seattle, WA, c. 1913. *From the University of Washington Libraries, Special Collections Division, Seattle Photograph Collection, Item #SEA0842, photo by Asahel Curtis. Pacific Coast Architecture Database/Public Domain.*



Pacific Telephone and Telegraph Company garage, 1917 (2-story portion of building). Edwin Ivey, architect, Harvey J. Allan, builder, circa 1937, demolished. *Puget Sound Regional Archives, City of Seattle Landmark Nomination for the Rodgers Tile Building, 2016, by David Peterson.*



## HARVEY J. ALLAN, BUILDER



Harvey and Sallie Fetter House, 1051 East Galer Street, 1918. Carl Gould, architect; Harvey J. Allan, builder. Photo 2005, *City of Seattle Historic Sites Database*.



Washington Shoe Manufacturing Company, southeast corner of Seventh Avenue and Snoqualmie Street, 1907. Andrew McBean, architect; Harvey J. Allan, builder. *Seattle Sunday Times*, 27 January 1907, p. 57.



## HISTORIC PHOTOGRAPHS



Direction of view indicated by red arrow.



Historic photograph of the Bordeaux House, circa 1905. *Courtesy Collection of Scott and Katie Renschler.*



## HISTORIC PHOTOGRAPHS



Direction of view indicated by red arrow.



Historic photograph of the Bordeaux House, circa 1905-1913. *Homes and Gardens of the Pacific Coast, Volume 1: Seattle, 1913.*



## HISTORIC PHOTOGRAPHS



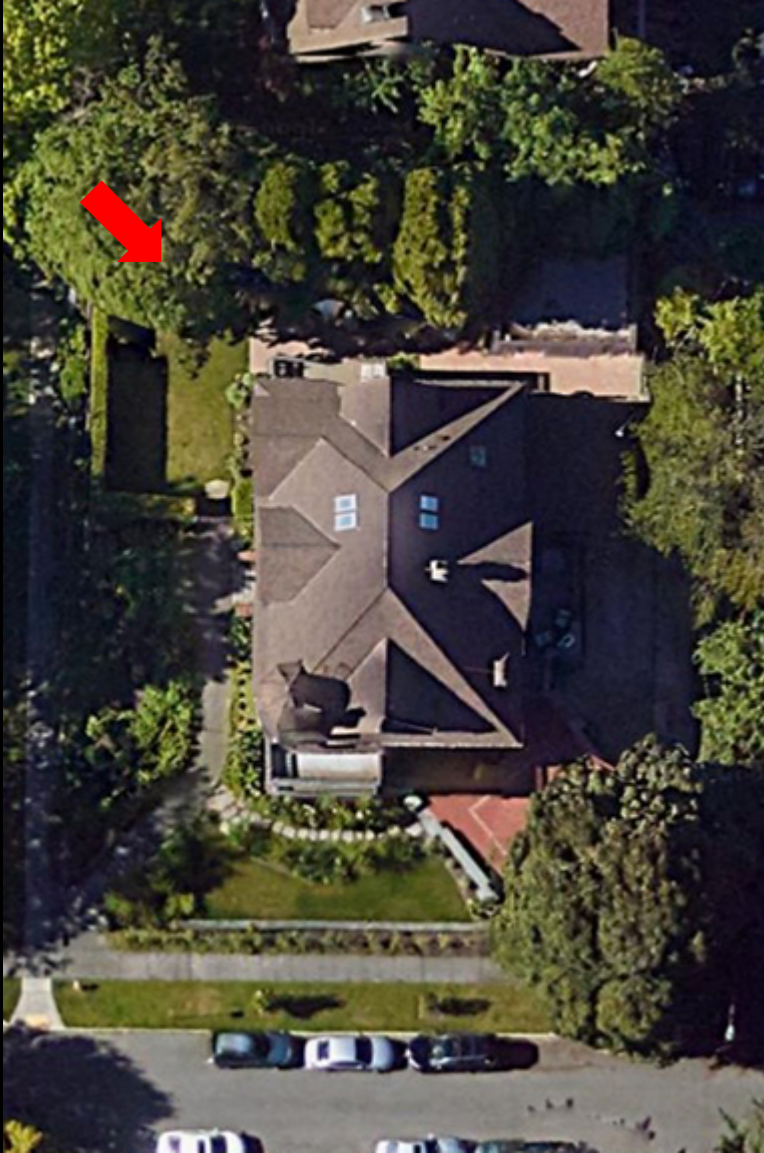
Direction of view indicated by red arrow.



Historic photograph of the Bordeaux House, 1905. *Published in The Mason County Journal, Special 1905 Edition, August 1905, courtesy of Liz Arbaugh, director of the Mason County Historical Society.*



## HISTORIC PHOTOGRAPHS



Direction of view indicated by red arrow.



Detail view of the north elevation of the Bordeaux House, circa 1906. *Bebb & Mendel Catalog, 1906, Seattle Public Library.*



## HISTORIC PHOTOGRAPHS



Direction of view indicated by red arrow.



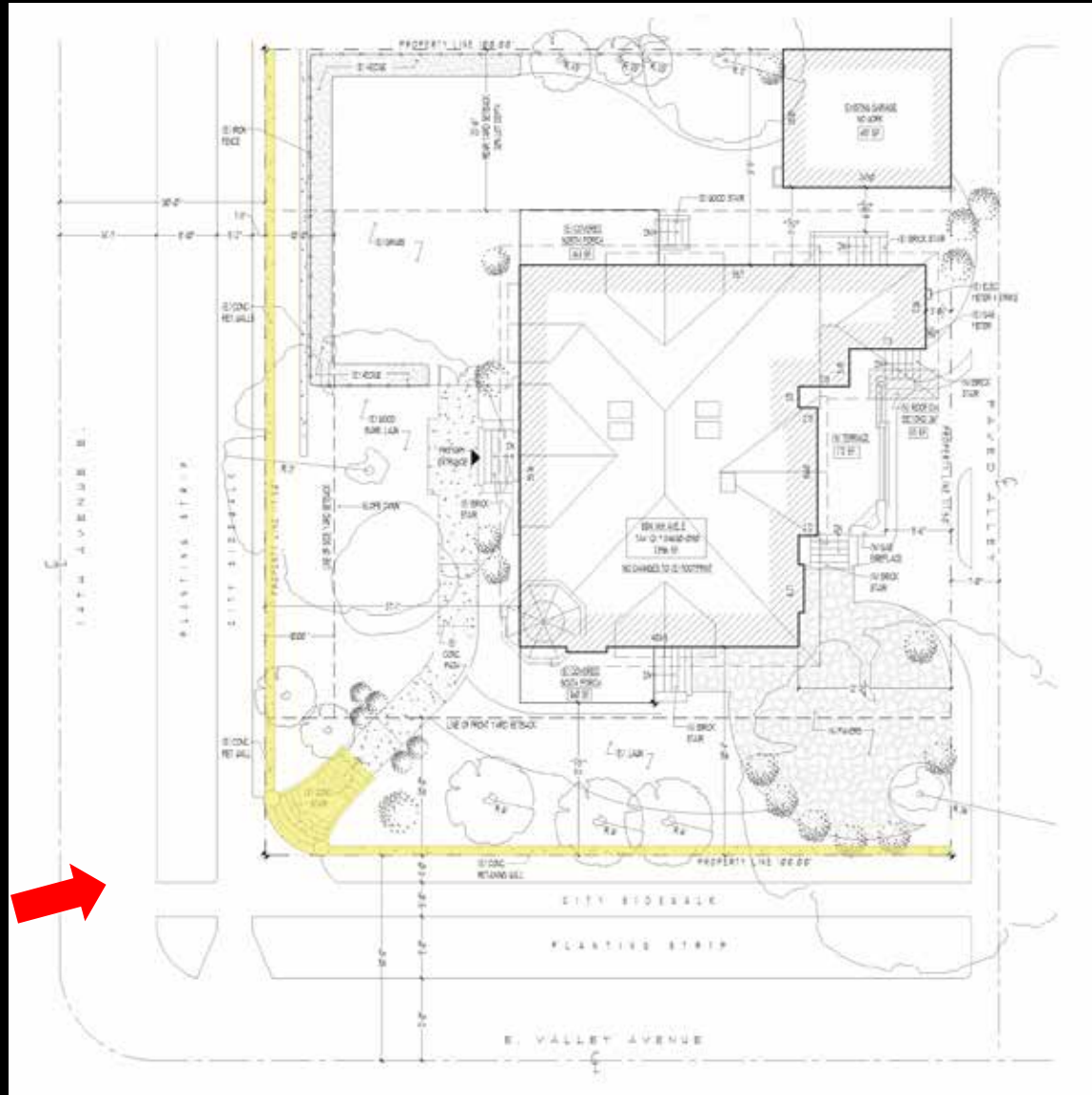
Historic photograph of the Bordeaux House, 1937. *Real Property Record Cards of King County, Puget Sound Regional Archives.*

## PRESENTATION TO THE LANDMARKS PRESERVATION BOARD: JANUARY 6, 2021

SITE



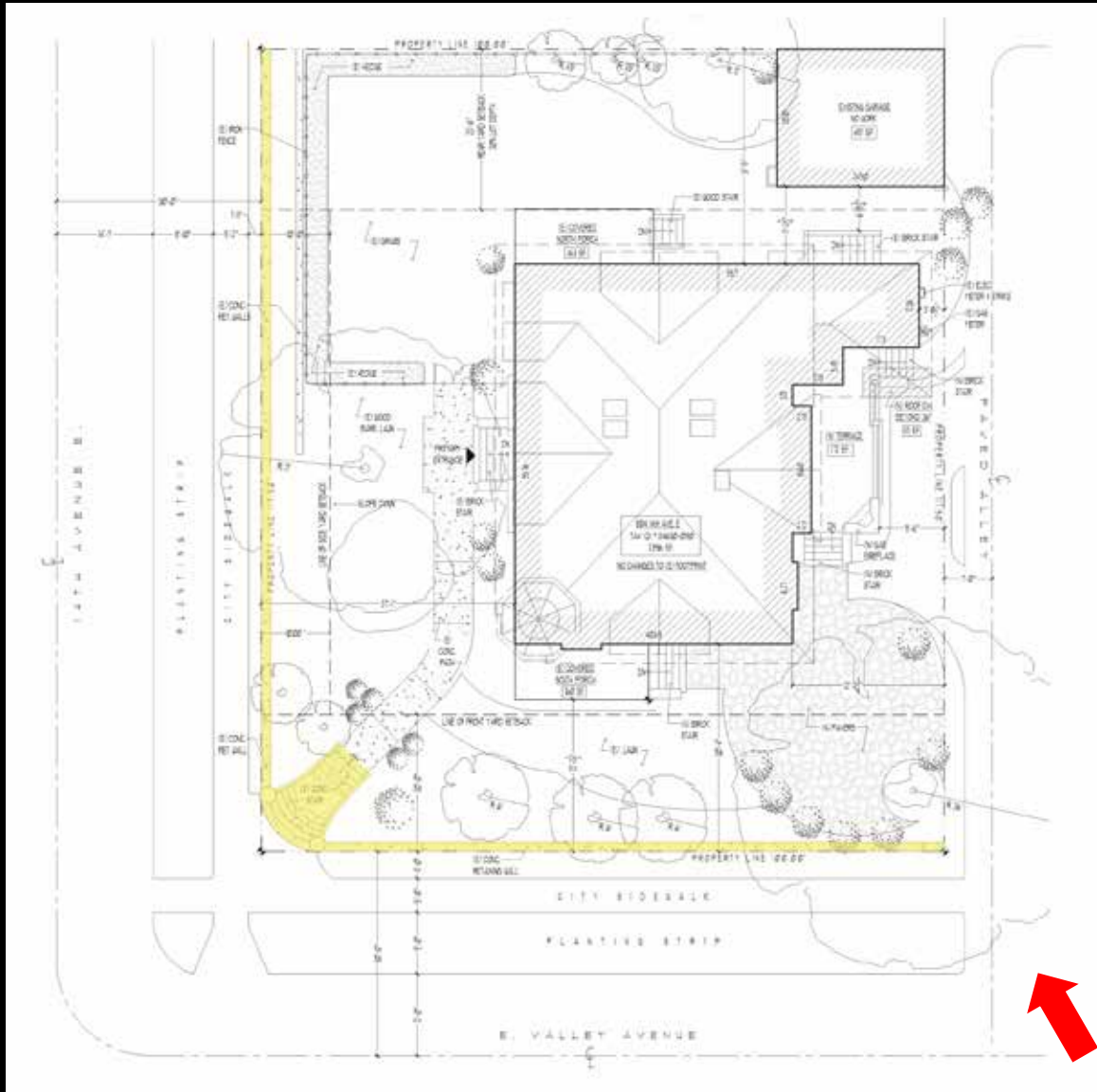
# SITE



Site plan, no scale, top of drawing is north (JAS Design/Build)



# SITE



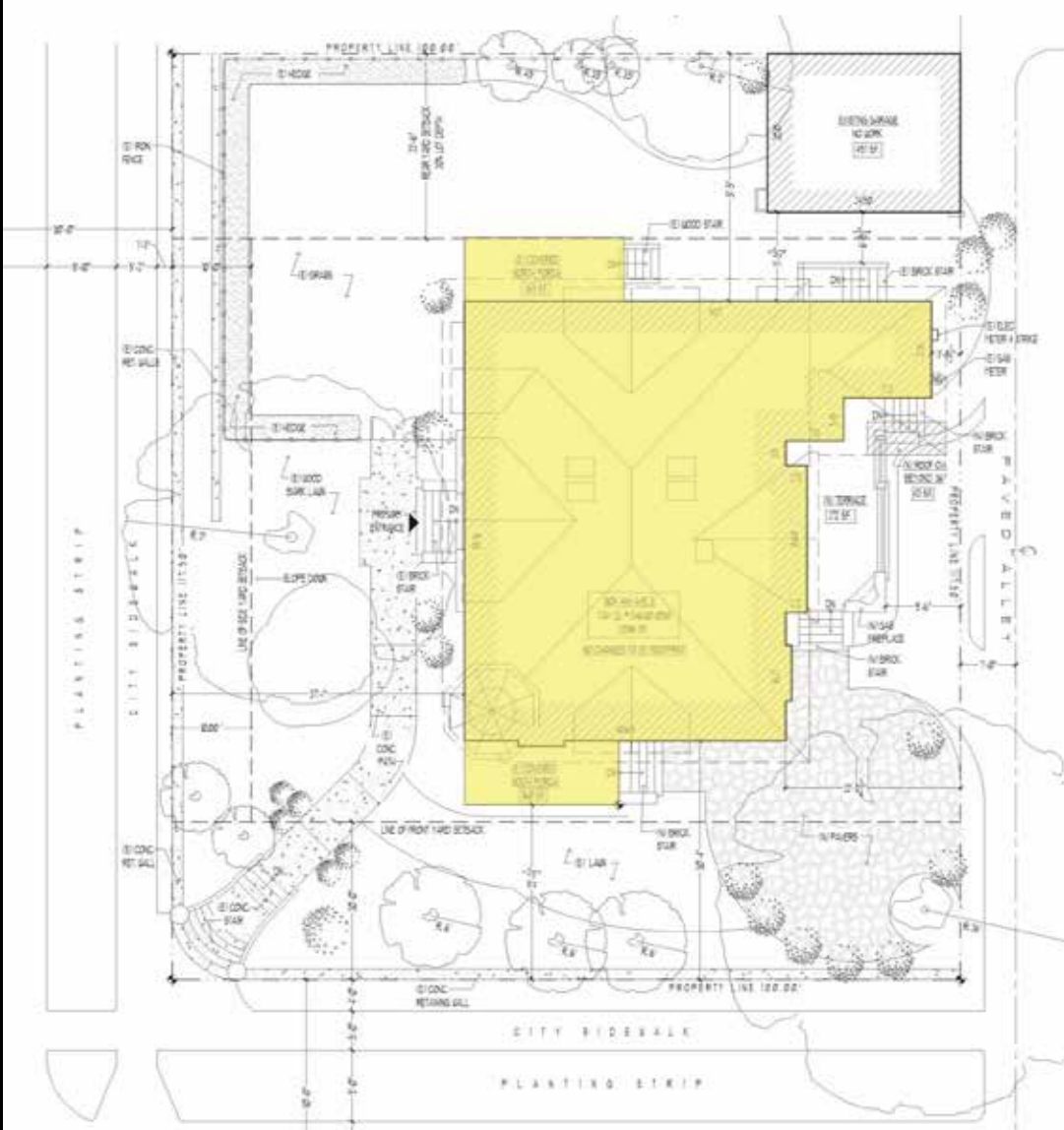
Site plan, no scale, top of drawing is north (JAS Design/Build)



EXTERIOR



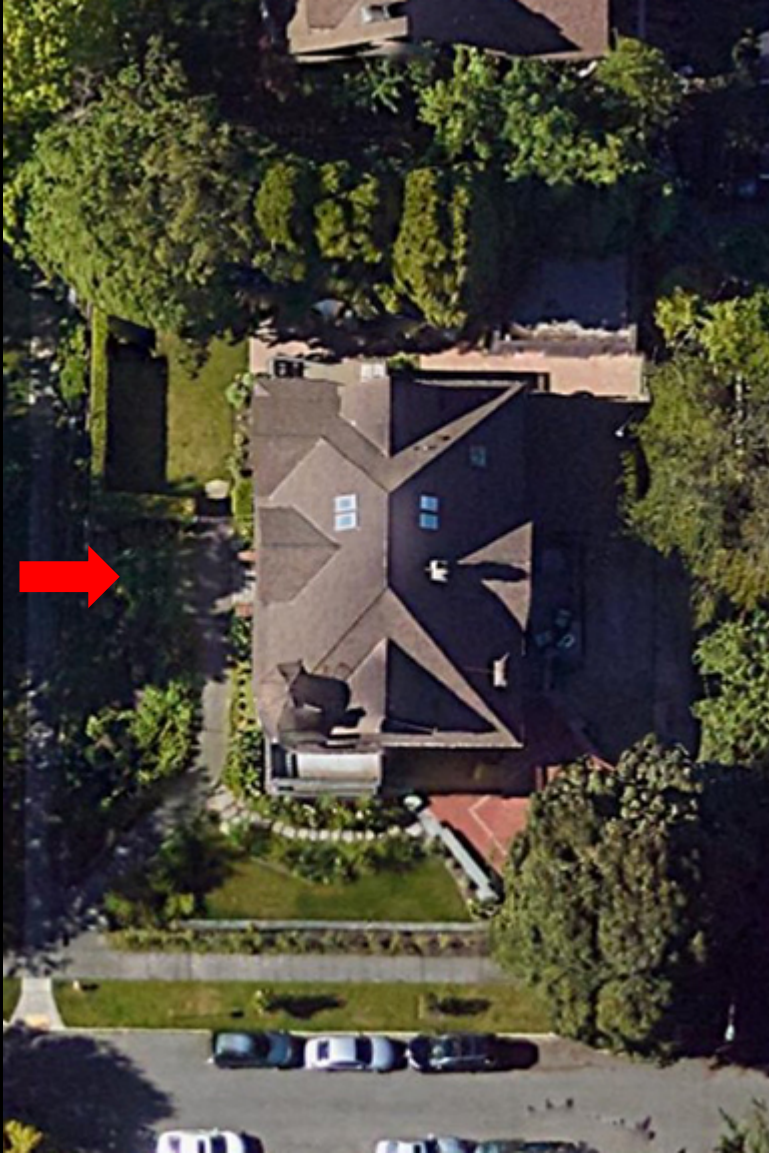
## EXTERIOR



Site plan, no scale, top of drawing is north (JAS Design/Build)



## EXTERIOR



Direction of view indicated by red arrow.



West elevation of the Bordeaux House, view looking east, 19 August 2019.



## EXTERIOR



Direction of view indicated by red arrow.



West and south elevations of the Bordeaux House, oblique view looking northeast, 19 August 2019.



## EXTERIOR



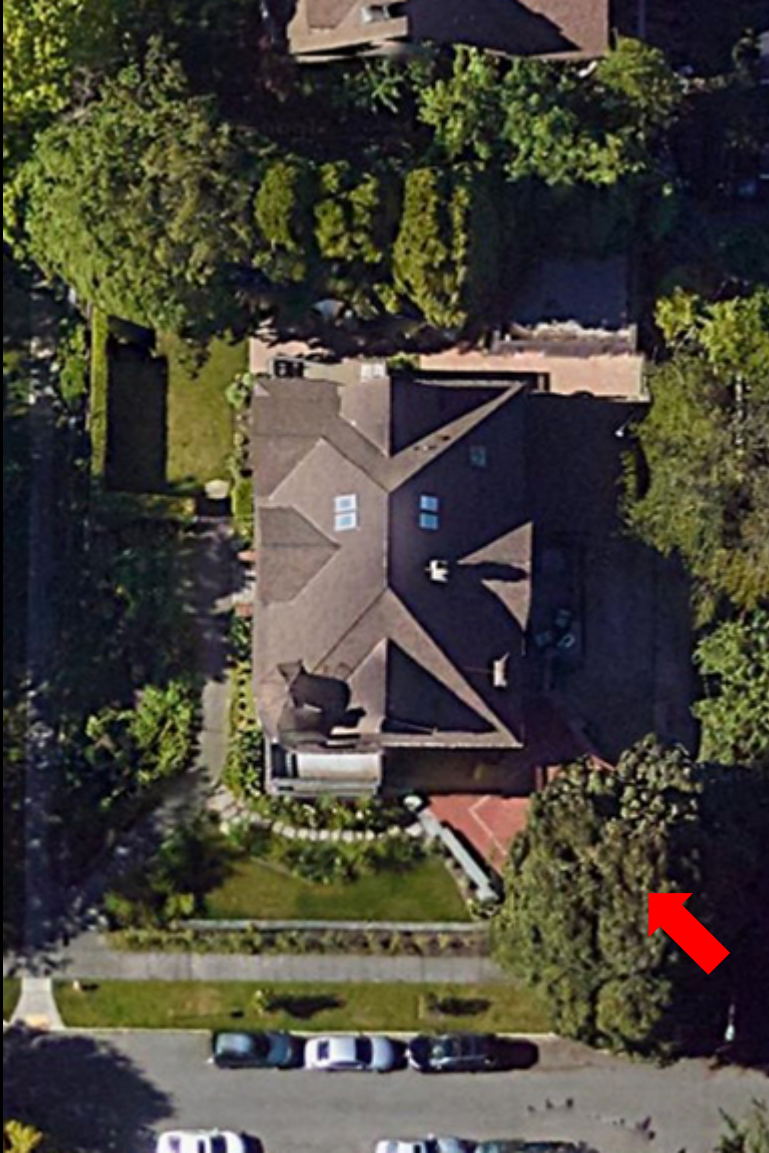
Direction of view indicated by red arrow.



South elevation of the Bordeaux House, view looking north, 19 August 2019.



## EXTERIOR



Direction of view indicated by red arrow.



South and east elevations of the Bordeaux House, oblique view looking northwest, 19 August 2019.



## EXTERIOR



Direction of view indicated by red arrow.



East elevation of the Bordeaux House, view looking west, 19 August 2019.



## EXTERIOR



Direction of view indicated by red arrow.



East and north elevations of the Bordeaux House, oblique view looking southwest, 19 August 2019.



## EXTERIOR



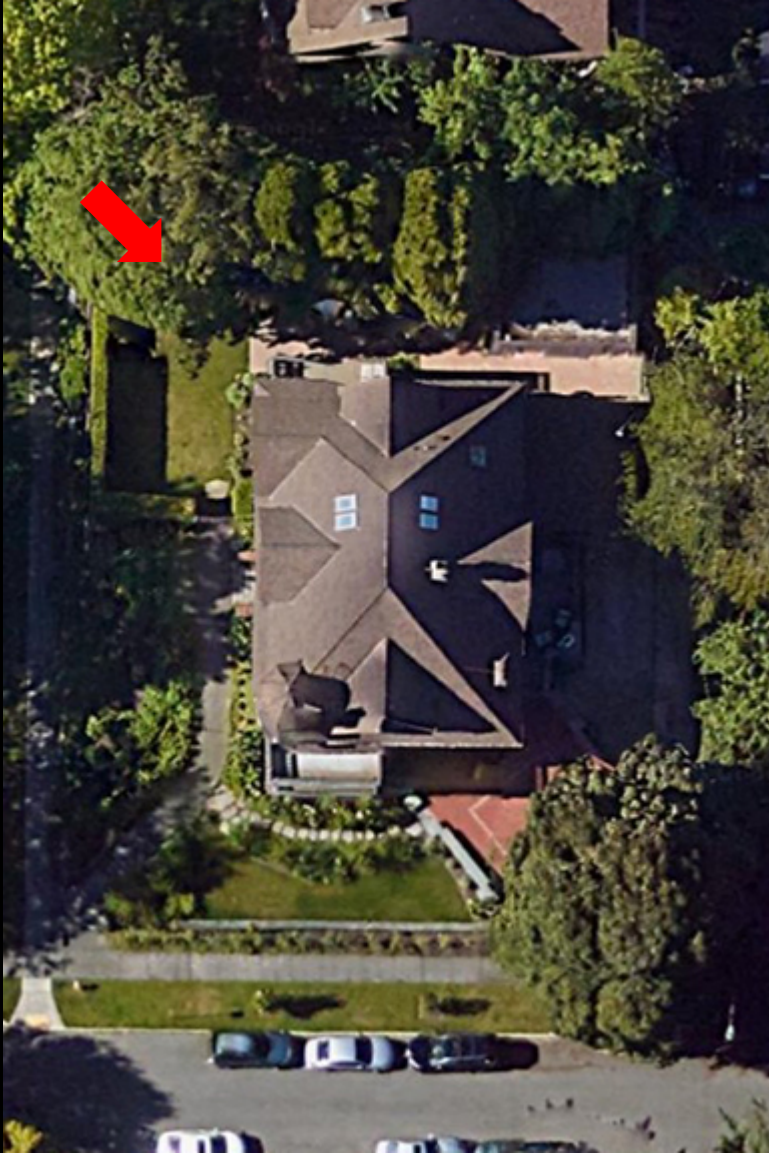
Direction of view indicated by red arrow.



North elevation of the Bordeaux House, view looking south, 19 August 2019.



## EXTERIOR



Direction of view indicated by red arrow.



North and west elevations of the Bordeaux House, oblique view looking southeast, 19 August 2019.



## EXTERIOR



Direction of view indicated by red arrow.



Detail view of the entry steps, cheek walls, recessed porch, and front door, 19 August 2019.



## EXTERIOR



Direction of view indicated by red arrow.



Detail view of the entry porch and recessed porch at second level, 19 August 2019.



## EXTERIOR



Direction of view indicated by red arrow.



Detail view of turret at southwest corner of the second level, 19 August 2019.



## EXTERIOR



Direction of view indicated by red arrow.



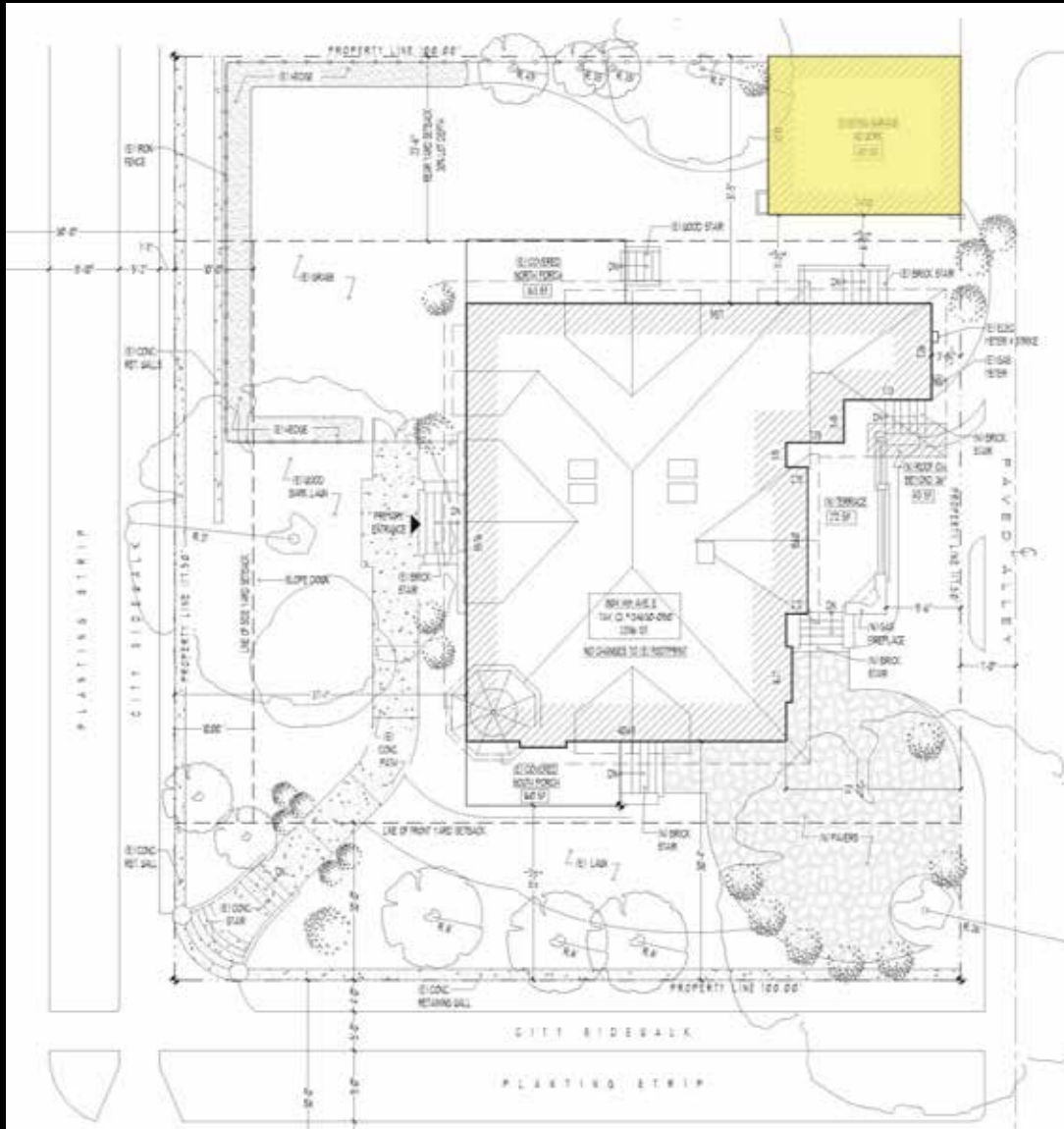
Detail view of the oval window, eaves, turret, and chimney at the south elevation, 19 August 2019.



GARAGE



# GARAGE



Form B. B. 97. 10M-15-10

## City of Seattle, Department of Buildings

\$ 600	\$	8	4	15	116960
Cost	Fee	Class	Bldg. Dist.	Bill Number	Inspection Dist.

### ...BUILDING PERMIT...

Subject to compliance with ordinances of the City of Seattle, permission is hereby granted to

Build: story brick veneer - garage  
 20 x 24  
 Roof joints 2 x 10 - 16" or 2 x 8 - 16" or  
 trussed to 2 x 6 - ceiling joints 16" or

At 806 - 14th Ave No

Lot No. 9-10 Block No. 10 of Capitol Hill

Name of Applicant

Name of Owner J. Bordeaux Address above

Builder " " Address

Architect " " Address

Brick M. Plaster 1 Yds. Cement Bbls.

Drawings and specifications have been filed; Official number of drawings

Duplicate drawings officially stamped approved must be kept on the works

Date of Issue 7/18 1912 Per J. H. Hunt Superintendent of Buildings

Expires 12/18 1912

NOTE - Before laying or covering up steel reinforcement notify this office. Any deviation from the plans filed require a new permit.

67-15 SPEC. BY UNITED AUTOMATICS MOUNTAIN OIL CHICAGO

Site plan, no scale, top of drawing is north (JAS Design/Build)

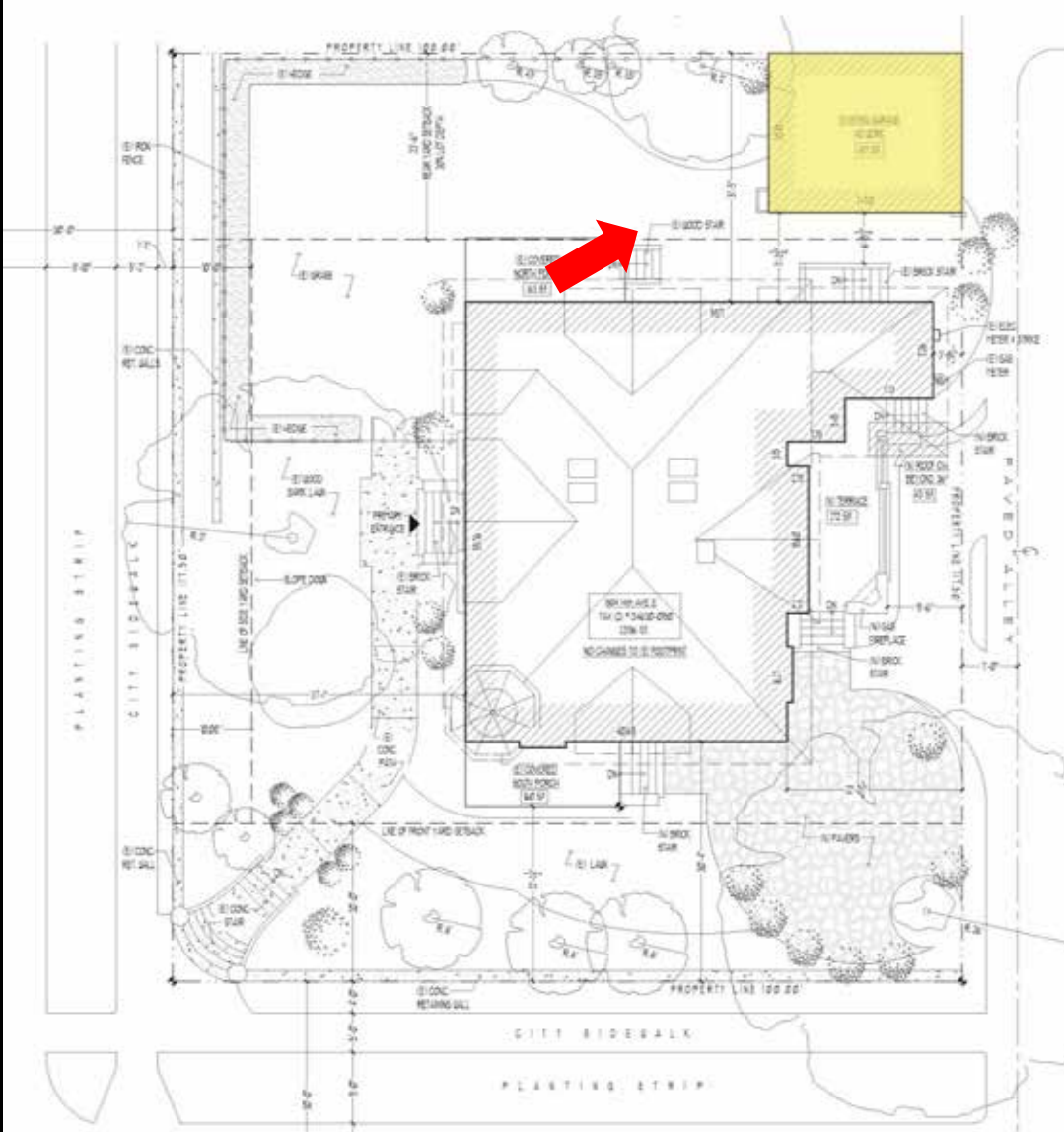


[illegible]

Site plan, no scale, top of drawing is north (JAS Design/Build)



## GARAGE



Site plan, no scale, top of drawing is north (JAS Design/Build)



## FOYER AND STAIRCASE



## FOYER AND STAIRCASE



View of the foyer and staircase, view looking northeast, 19 August 2019.



View of the foyer and staircase, view looking northwest, 19 August 2019.



## FOYER AND STAIRCASE



View of the foyer and staircase, view looking east, 19 August 2019.



View of the foyer and staircase, view looking south, 19 August 2019.



## FOYER AND STAIRCASE



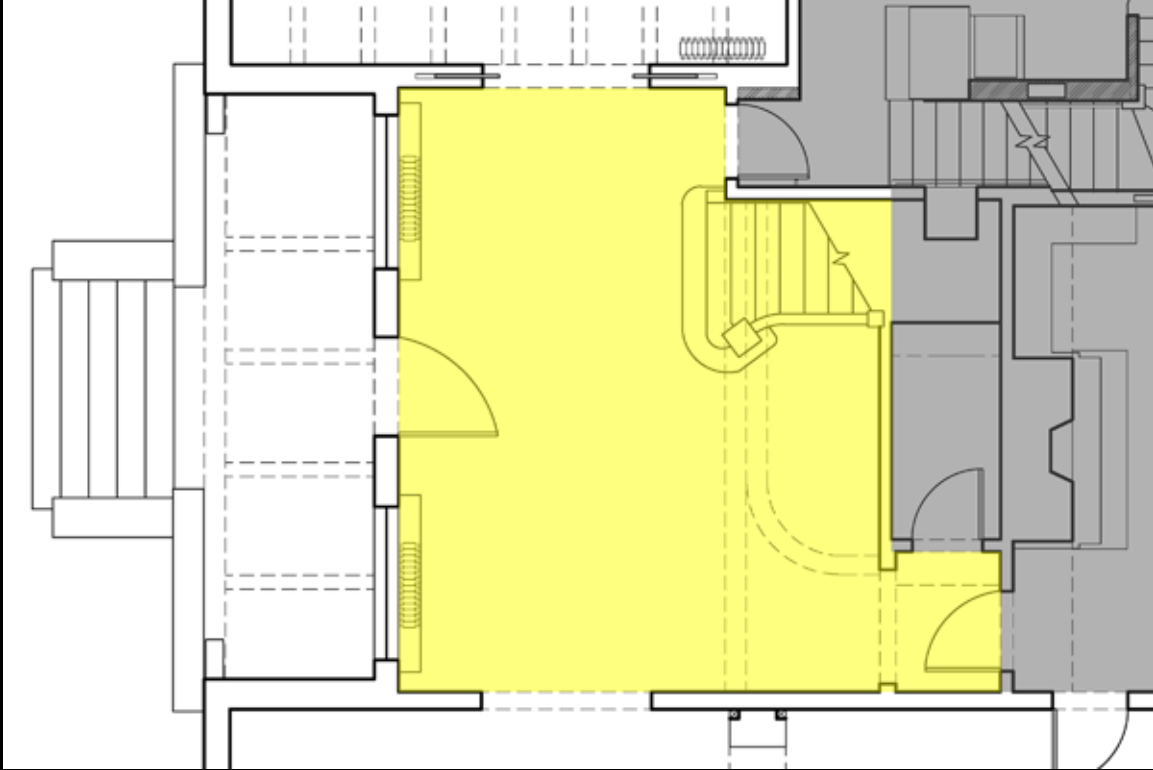
View of the foyer and staircase, view looking west, 19 August 2019.



View of the staircase, view looking north from second level, 19 August 2019.



## FOYER AND STAIRCASE



Foyer plan, no scale, top of drawing is north (JAS Design/Build)



Western Electric intercommunication telephone set.



Tuc central vacuum cleaning system port and detail of wood floor.



LIVING ROOM



## LIVING ROOM



View of the living room, view looking southeast, 19 August 2019.



View of the living room, view looking northeast, 19 August 2019.



## LIVING ROOM



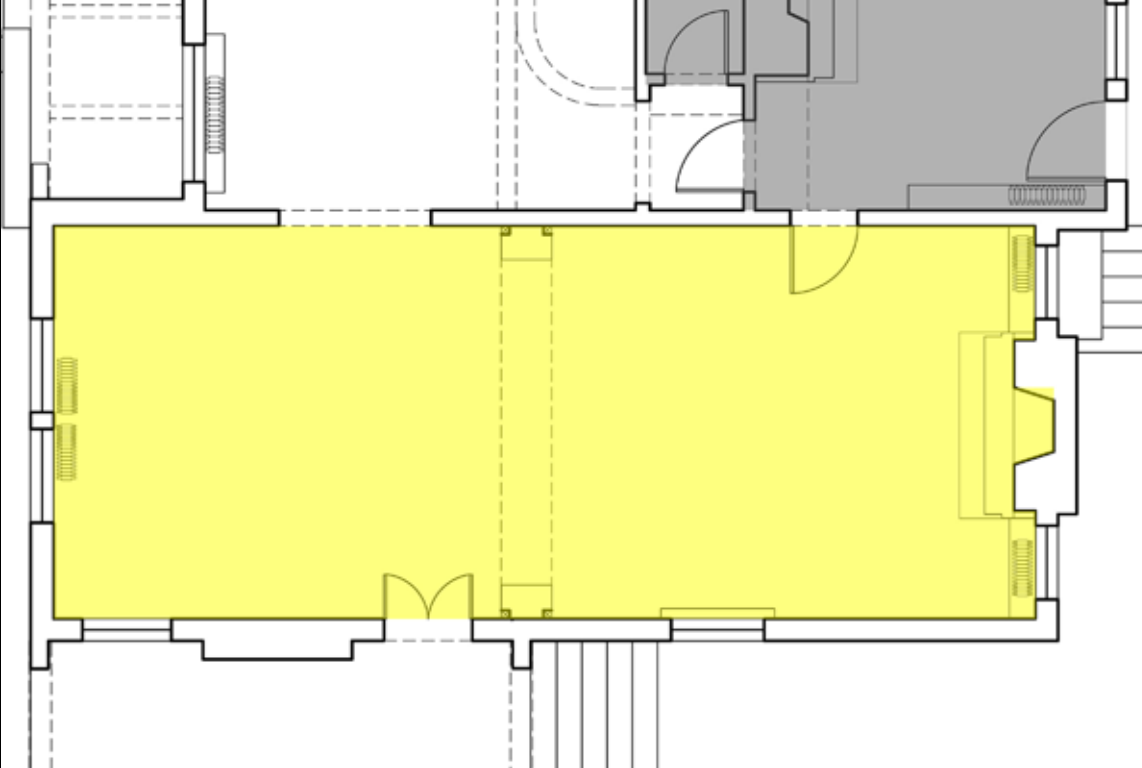
View of the living room, view looking northeast, 19 August 2019.



View of the living room, view looking southwest, 19 August 2019.



## LIVING ROOM



Living room plan, no scale, top of drawing is north (JAS Design/Build)



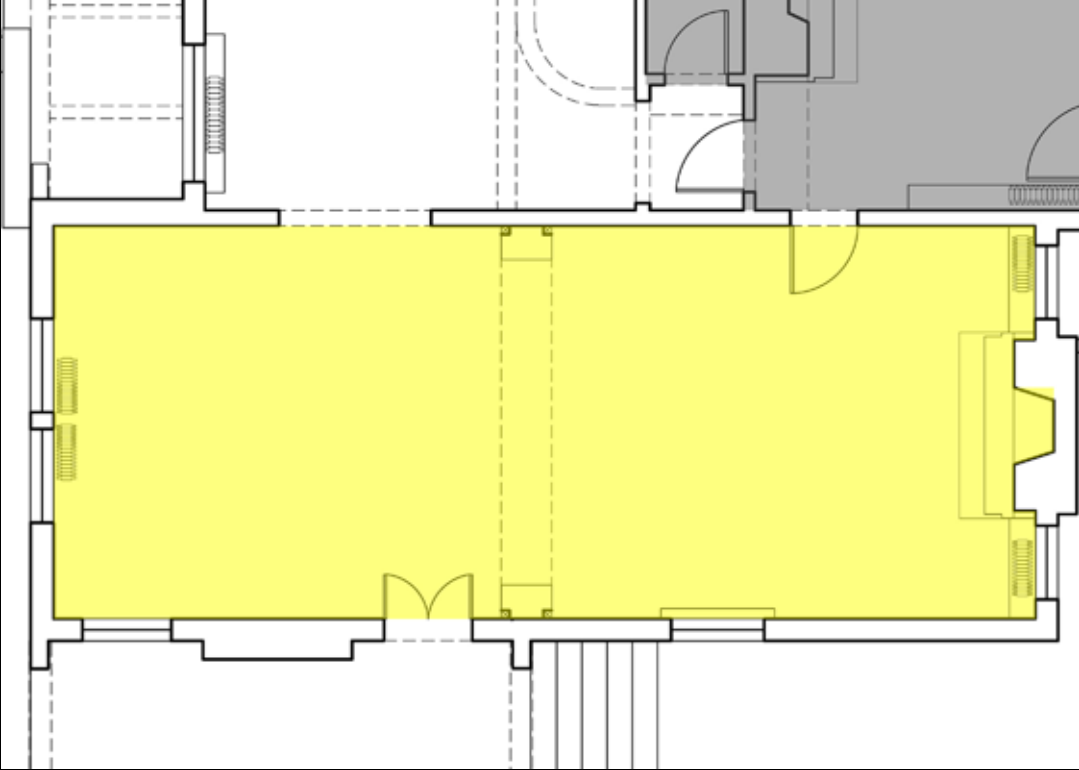
Fireplace at east wall of living room, 19 August 2019.



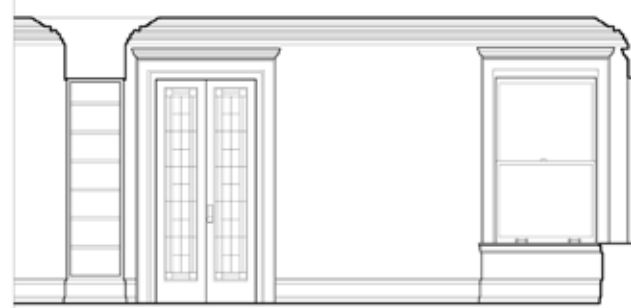
French doors at south wall of living room, 19 August 2019.



## LIVING ROOM



Living room plan, no scale, top of drawing is north (JAS Design/Build)



South Elevation



Section



North Elevation

Interior elevations of the Living room (JAS Design/Build).



## DINING ROOM

## DINING ROOM



View of the dining room, view looking northwest, 19 August 2019.



View of the dining room, view looking northeast, 19 August 2019.



## DINING ROOM

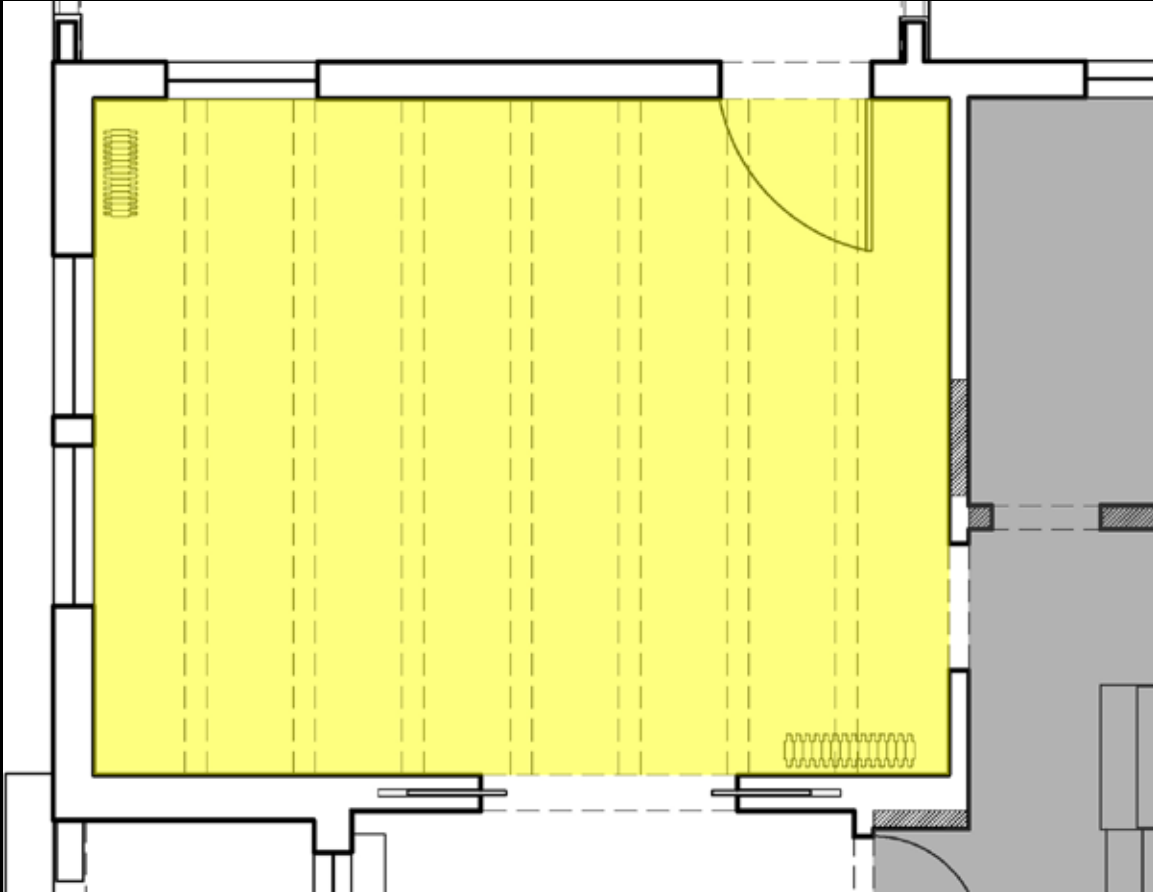


View of the dining room, view looking southeast, 19 August 2019.



View of the dining room, view looking west, 19 August 2019.

## DINING ROOM



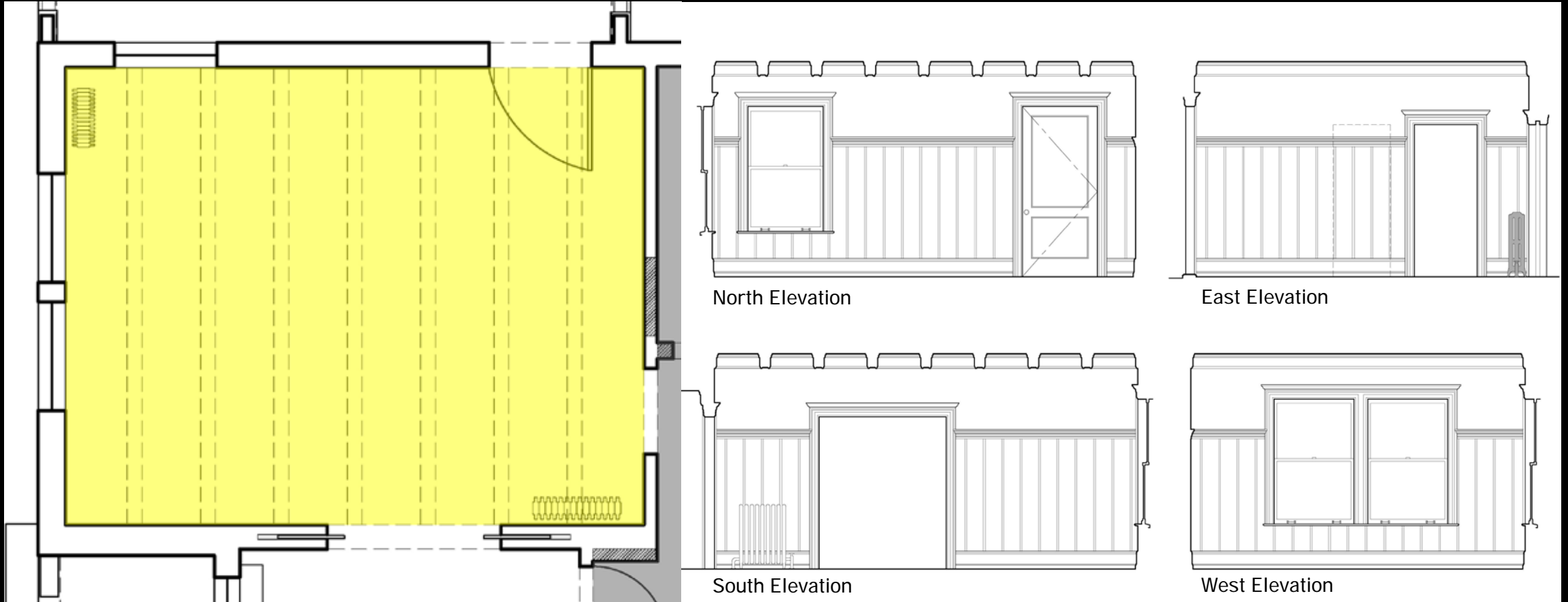
Dining room plan, no scale, top of drawing is north (JAS Design/Build)



Historic photograph of the dining room, view looking northeast, 1946.



## DINING ROOM



Dining room plan, no scale, top of drawing is north (JAS Design/Build) Interior elevations of the Dining Room (JAS Design/Build).

## CONCLUSION



## CONCLUSION

Criterion A: *It is the location of, or is associated in a significant way with, a historic event with a significant effect upon the community, City, state, or nation; or*

Criterion B: *It is associated in a significant way with the life of a person important in the history of the City, state, or nation; or*

Criterion C: *It is associated in a significant way with a significant aspect of the cultural, political, or economic heritage of the community, City, state or nation; or*

Criterion D: *It embodies the distinctive visible characteristics of an architectural style, or period, or a method of construction; or*

Criterion E: *It is an outstanding work of a designer or builder; or*

Criterion F: *Because of its prominence of spatial location, contrasts of siting, age, or scale, it is an easily identifiable visual feature of its neighborhood or the city and contributes to the distinctive quality or identity of such neighborhood or the City.*

In addition to meeting at least one of the above standards, the object, site, or improvement must also possess integrity or the ability to convey its significance.