

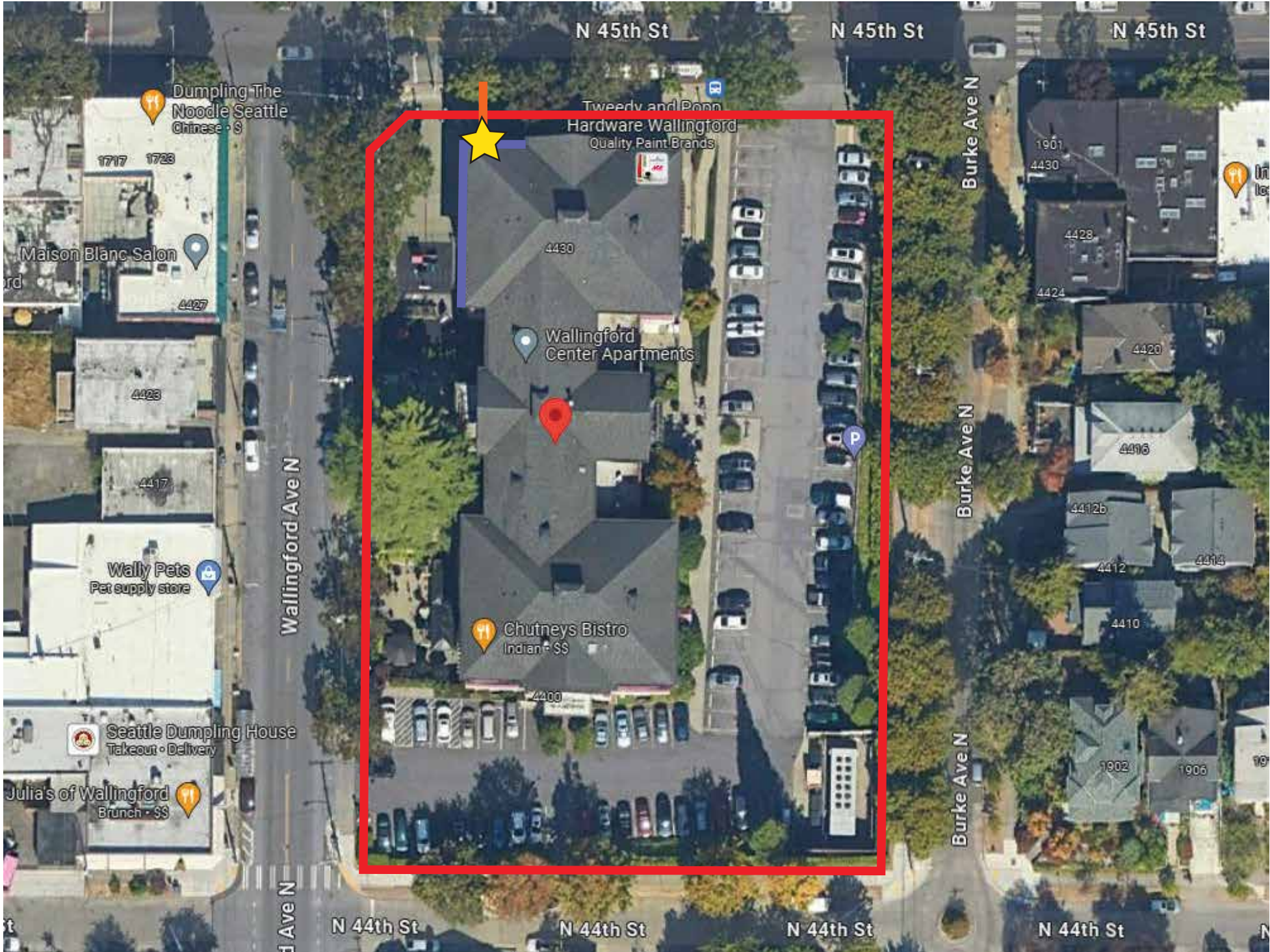
PARCEL INFO

Parcel: 4083300140
Zone: NC2P-55 (M)
Parcel Area: 1.72 acres
Site Address:
1815 N 45th Street,
Seattle WA 908103

Property Taxpayer:
SEATTLE SCHOOL DIST
C/O JBLLC
2829 RUCKER AVE
EVERETT WA 98201



SITE INFORMATION



- ★ Proposed Sign
- ▭ Property Line
- ▭ Sign Setback
- ▭ Building Frontage

Sign Setback from nearest street = 36.5'
Tenant Frontage = 99'
Sign to be installed facing N 45th St



(253) 314 5623
www.clearwaysigns.com

Cascadia Pharmacy_Seattle_Sign Package

Job Order:	Date created: Sept. 24, 2024	Date revised:
Sign Type: Channel Letters	Approval:	
Size: (Scale 1:873)		

The design depicted herein is the sole property of Clearway Signs, and may not be reproduced in whole or in part without prior written consent. Actual color, letter sizes and graphic layout may vary slightly due to the properties of materials. Colors may vary depending on media substrate. This sign is intended to be installed in accordance with Article 600 of the National Electrical Code and/or other applicable local codes.

Cascadia Pharmacy – Photographs of Existing Views of the Building

(in response to Correction Letter dated 9/17/2024)

**Address: Wallingford Center
1815 N 45th Street, Seattle WA 98103**

Note: There will be no other business signage in addition to the channel letter sign and the back-to-back banners on the existing poles.

Note: There will be no change to the existing banner poles. Measurements taken indicate that the banners will be 66" tall as noted in the revised plan set. We will be using the same image on both side of the banner.

Note: The 2" raceway is as displayed in the plan set and will be painted the same color as the existing wall. There are two rectangular raceways behind "Cascadia" and "Pharmacy"

Note: The Logo and the Words are both internally lit

Note: After installation there will be no exposed electrical conduit

West Side of the Building





North Side of the Building





North West Corner



IMPOSED SIGN



FRONT VIEW (SCALE 1:57)



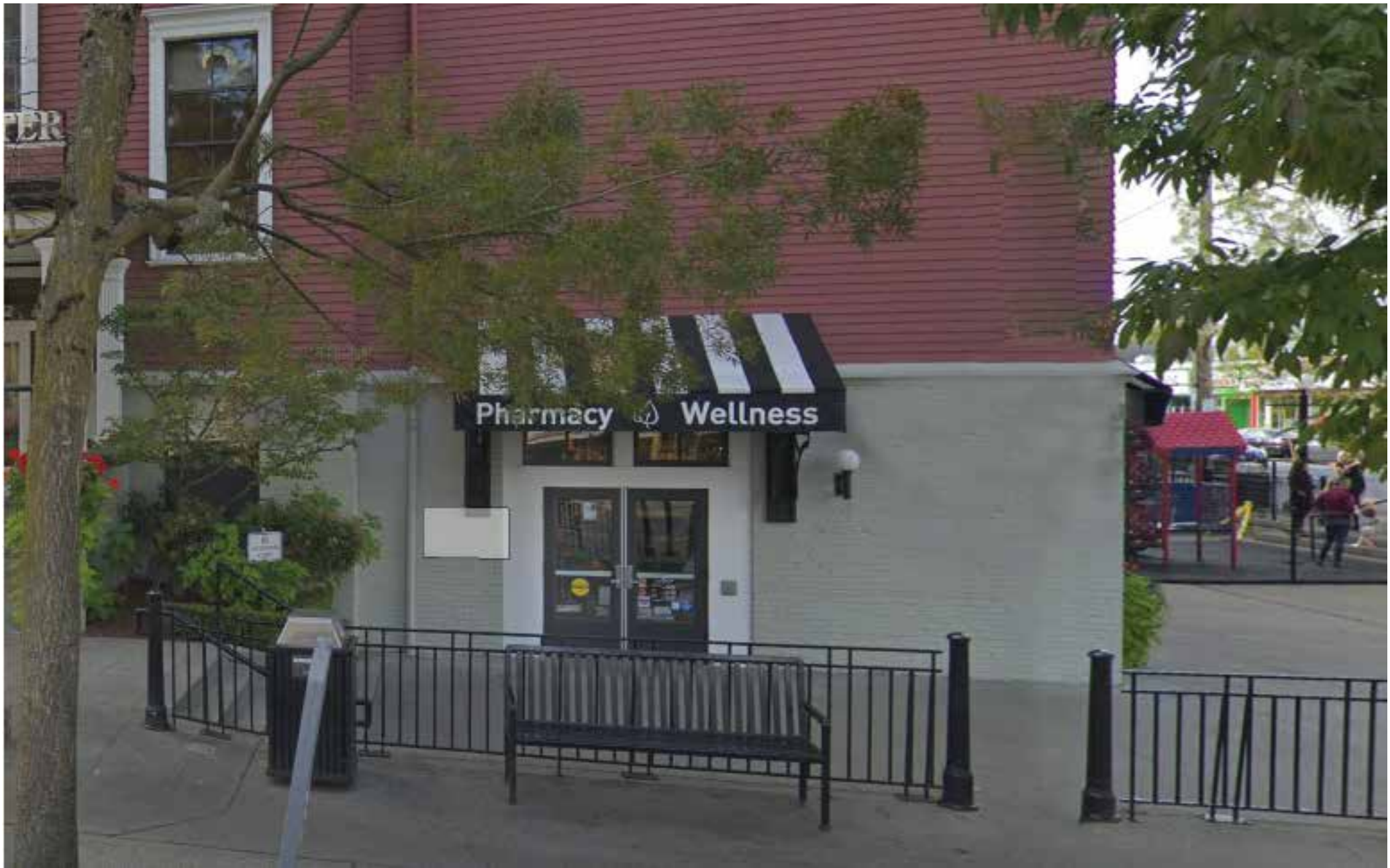
(253) 314 5623
www.clearwaysigns.com

Cascadia Pharmacy_Seattle_Sign Package

Job Order:	Date created: Sept. 24, 2024	Date revised:
Sign Type: Channel Letters	Approval:	
Size: 118.2" w x 24.35" h (Scale 1:57)		

The design depicted herein is the sole property of Clearway Signs, and may not be reproduced in whole or in part without prior written consent. Actual color, letter sizes and graphic layout may vary slightly due to the properties of materials. Colors may vary depending on media substrate. This sign is intended to be installed in accordance with Article 600 of the National Electrical Code and/or other applicable local codes.

EXISTING BUILDING



FRONT VIEW (SCALE 1:57)

<div><p>(253) 314 5623 www.clearwaysigns.com</p></div>	Cascadia Pharmacy_Seattle_Sign Package	Job Order:	Date created: Sept. 24, 2024	Date revised:
		Sign Type: Channel Letters		Approval:
		Size:		
The design depicted herein is the sole property of Clearway Signs, and may not be reproduced in whole or in part without prior written consent. Actual color, letter sizes and graphic layout may vary slightly due to the properties of materials. Colors may vary depending on media substrate. This sign is intended to be installed in accordance with Article 600 of the National Electrical Code and/or other applicable local codes.				2

SIGN DETAILS

Channel Letters
Black Trimcap; 3" Black Return
Raceway painted to match the wall color
Attached with fasteners
Qty: 1

Blue

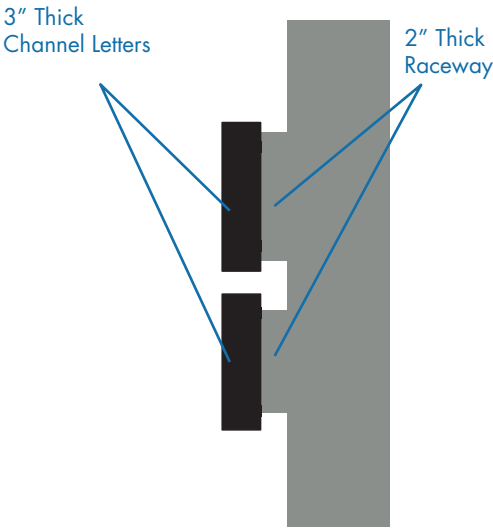
Black

Aqua Blue

Gray



FRONT VIEW (SCALE 1:15)
SIGN AREA: 27.5 SQ. FT.



SIDE VIEW (SCALE 1:15)

MATERIAL/COLOR CALLOUT



- T1

BLACK TRIM CAP
- A1

ACRYLIC FACE WITH PRINTED VINYL
- L1

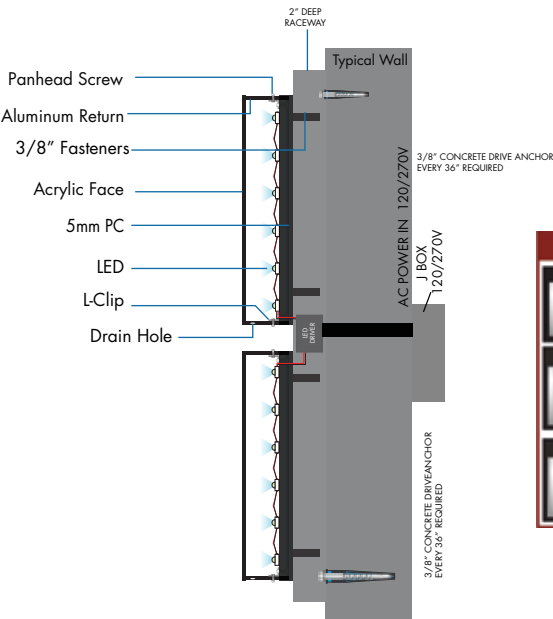
WHITE LED
- R1

BLACK ALUMINUM RETURN

GENERAL NOTES

- INSTALLATION OF THIS SIGN SHALL CONFORM TO THE REQUIREMENTS OF ARTICLE 600 OF NEC, UI48, UL 2161 COMPLIANT AND/OR OTHER APPLICABLE LOCAL CODES.
- BRANCH CIRCUIT:
 - ALL BRANCH CIRCUITS FOR SIGNS MUST BE TOTALLY DEDICATED TO SIGNS (INCLUDING DEDICATED GROUND AND DEDICATED NEUTRALPER CIRCUIT).
 - SIGN CIRCUITS MUST NOT BE SHARED.
 - PROPERTY SIZED GROUND WIRE THAT CAN BE TRACKED TO THE BREAKER PANEL MUST BE PROVIDED.
- UL AND DATA LABELS REQUIRED.
- SIGNS ARE INTENDED TO BE INSTALLED IN ACCORDANCE WITH THE INSTALLATION INSTRUCTIONS PROVIDED WITH THE SIGN SECTIONS AND THE NEC. AUTHORITIES HAVING JURISDICTION ARE RESPONSIBLE FOR THE ULTIMATE DECISION TO APPROVE AN INSTALLATION.

ATTACHMENT DETAIL



FASTENER SCHEDULE	
Thru-Bolt Mounting	3/8" THREADED ROD FOR USE IN THRU BOLT APPLICATIONS
Hanger Bolts	3/8" LAG SCREW FOR USE IN WOOD BLOCKING 1 1/2" MIN PENETRATION
Masonry Lag Bolt Mounting	MASONRY EXPANSION BOLT W/ADHESIVE EMBED 2" MIN



(253) 314 5623
www.clearwaysigns.com

Cascadia Pharmacy_Seattle_Sign Package

Job Order:	Date created: Sept. 24, 2024	Date revised:
Sign Type: Channel Letters	Approval:	
Size: 118.2" w x 24.35" h (Scale 1:15)		

IMPOSED SIGN



FRONT VIEW (SCALE 1:52)

<div><p>(253) 314 5623 www.clearwaysigns.com</p></div>	Cascadia Pharmacy_Seattle_Sign Package	Job Order:	Date created: Sept. 24, 2024	Date revised:
		Sign Type: Banner	Approval:	
		Size: 54" W x 60" H (Scale 1:52)		
The design depicted herein is the sole property of Clearway Signs, and may not be reproduced in whole or in part without prior written consent. Actual color, letter sizes and graphic layout may vary slightly due to the properties of materials. Colors may vary depending on media substrate. This sign is intended to be installed in accordance with Article 600 of the National Electrical Code and/or other applicable local codes.				5

EXISTING POLE



(253) 314 5623
www.clearwaysigns.com

Cascadia Pharmacy_Seattle_Sign Package

Job Order:	Date created: Sept. 20, 2024	Date revised:
Sign Type: Banner	Approval:	
Size:		

The design depicted herein is the sole property of Clearway Signs, and may not be reproduced in whole or in part without prior written consent. Actual color, letter sizes and graphic layout may vary slightly due to the properties of materials. Colors may vary depending on media substrate. This sign is intended to be installed in accordance with Article 600 of the National Electrical Code and/or other applicable local codes.

SIGN DETAILS

Banner
13oz Banner
Attached with grommet
Qty: 4

Blue

White

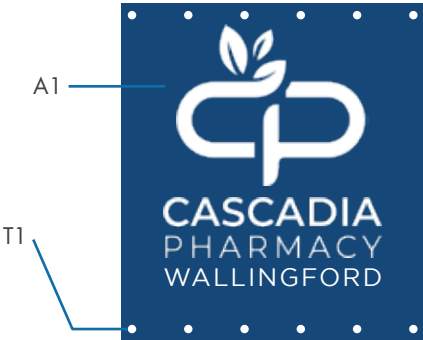


FRONT VIEW (SCALE 1:12)



SIDE VIEW

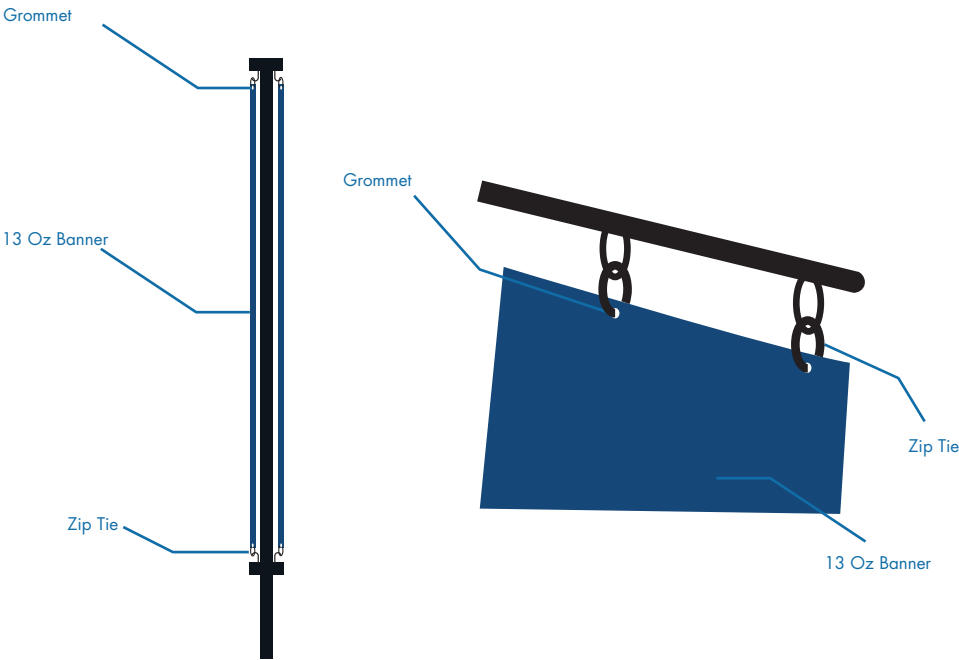
MATERIAL/COLOR CALLOUT



A113 OZ BANNER

T1GROMMET

ATTACHMENT DETAIL



CLEARWAY
SIGNS

(253) 314 5623

www.clearwaysigns.com

Cascadia Pharmacy_Seattle_Sign Package

Job Order:	Date created: Sept. 24, 2024	Date revised:
Sign Type: Banner	Approval:	
Size: 54" W x 60" H (Scale 1:12)		

The design depicted herein is the sole property of Clearway Signs, and may not be reproduced in whole or in part without prior written consent. Actual color, letter sizes and graphic layout may vary slightly due to the properties of materials. Colors may vary depending on media substrate. This sign is intended to be installed in accordance with Article 600 of the National Electrical Code and/or other applicable local codes.