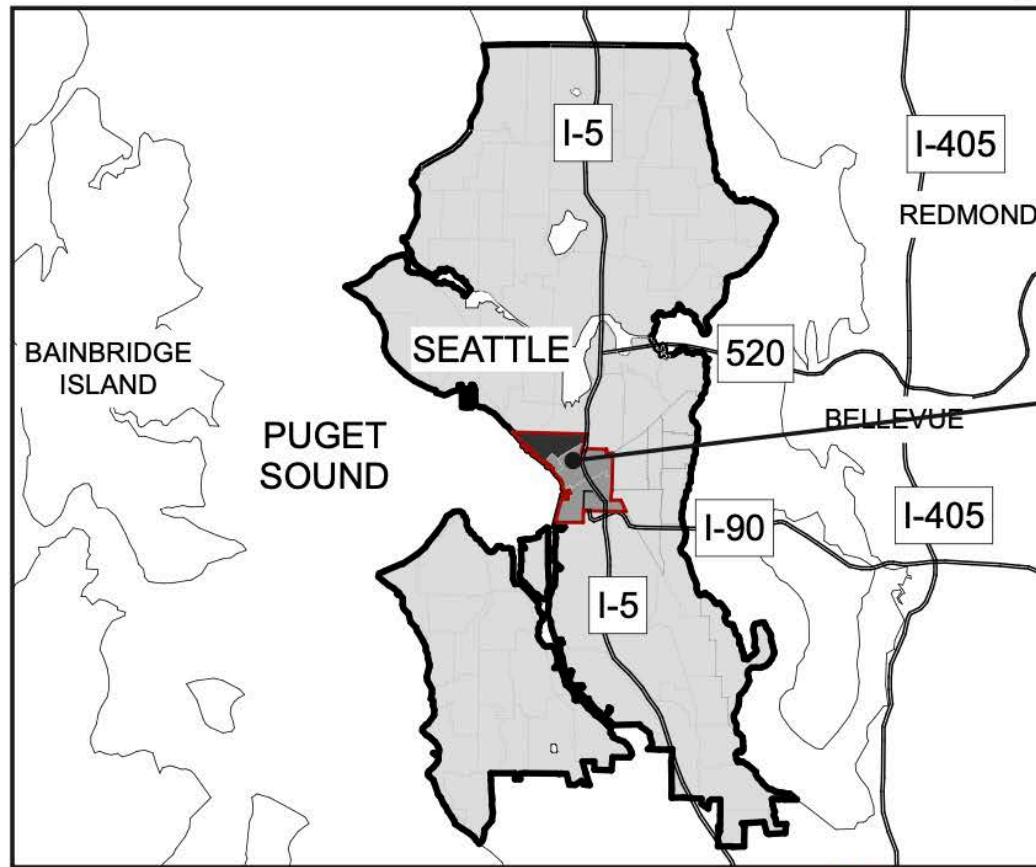




FIFTH AVENUE COURT

2135 FIFTH AVENUE

CITY OF SEATTLE LANDMARK NOMINATION
AUGUST 21, 2024



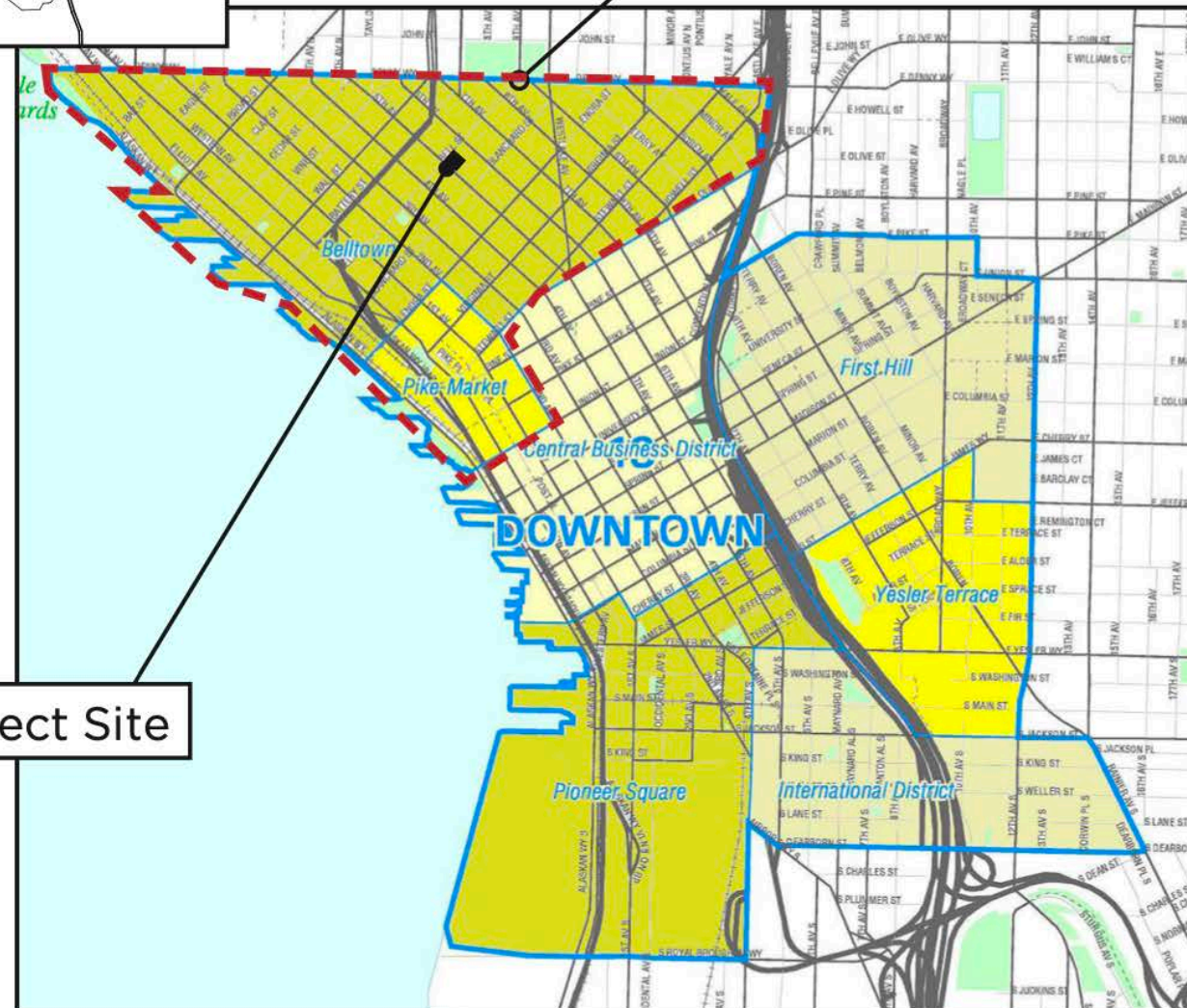
Downtown District

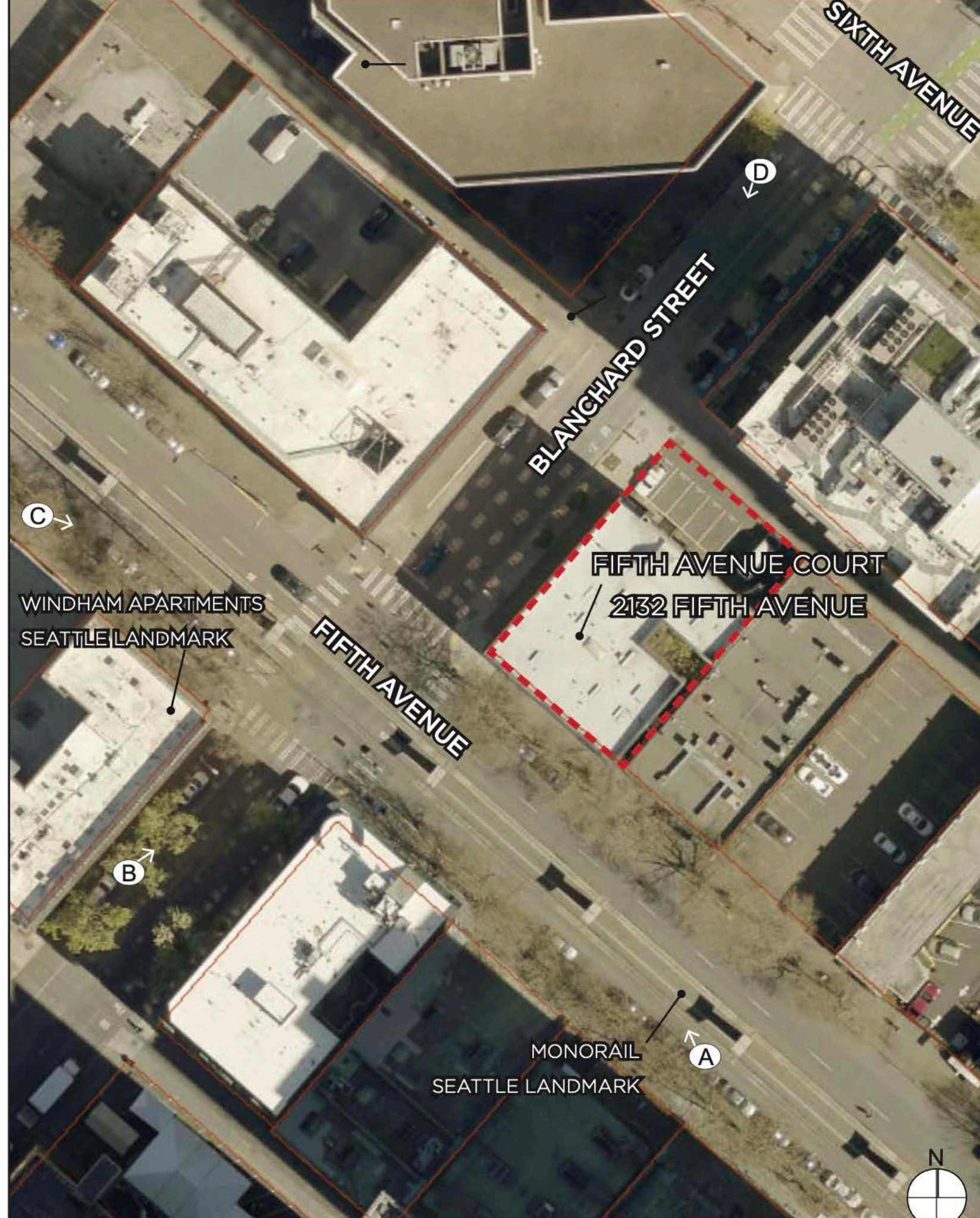
Belltown Neighborhood

Seattle City Clerk

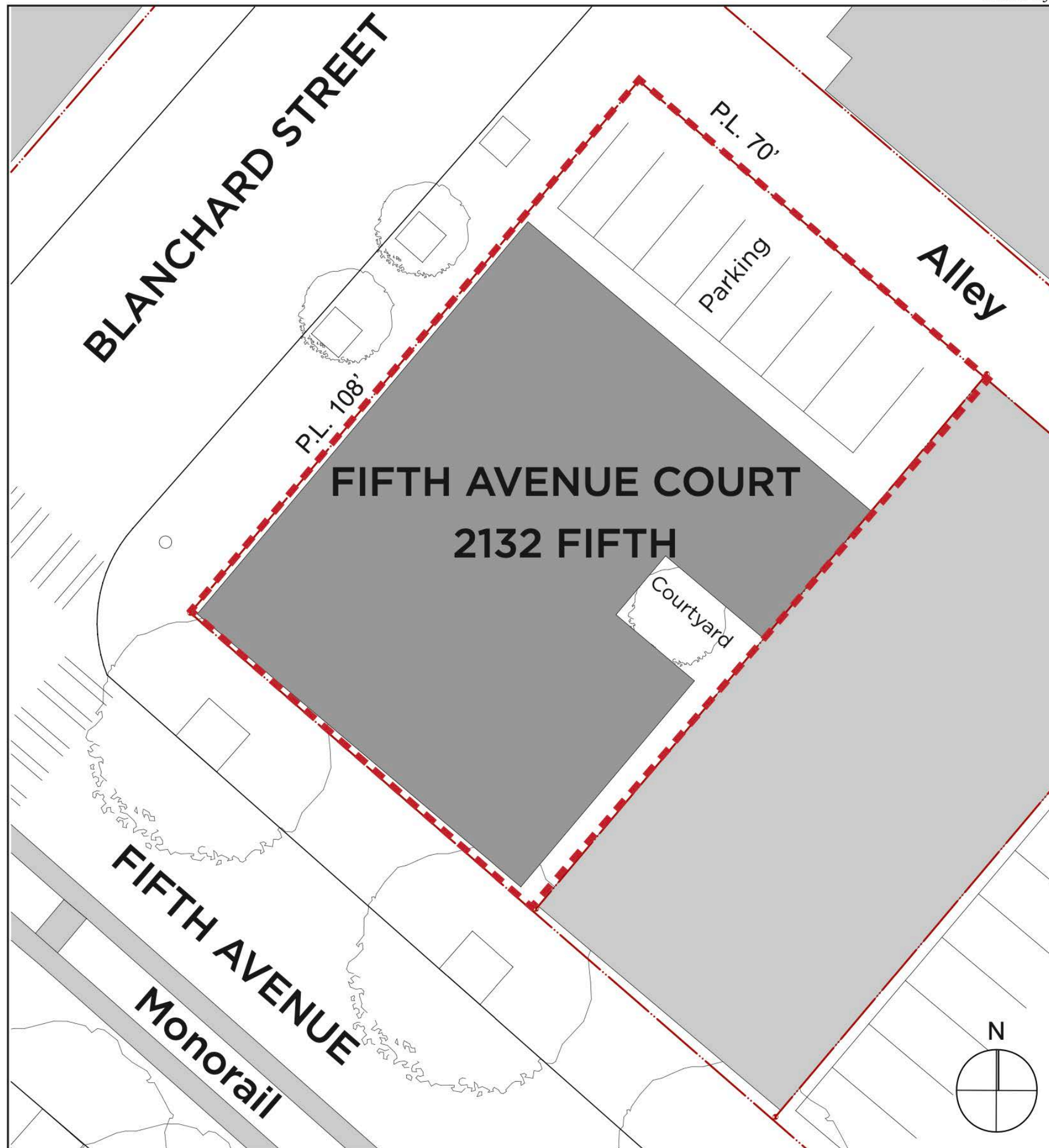
Neighborhood map from
Seattle City Clerk's
Neighborhood Atlas

Subject Site





Aerial View



Site Plan



RIGHT LANE
BUSES
ONLY
8 AM
- 5 PM
DOWNTOWN
DISTRICT

FIFTH
AVENUE
COURT

FIFTH
AVENUE
COURT

P
Hourly
Downtown

2132

























204

203

205

EXIT



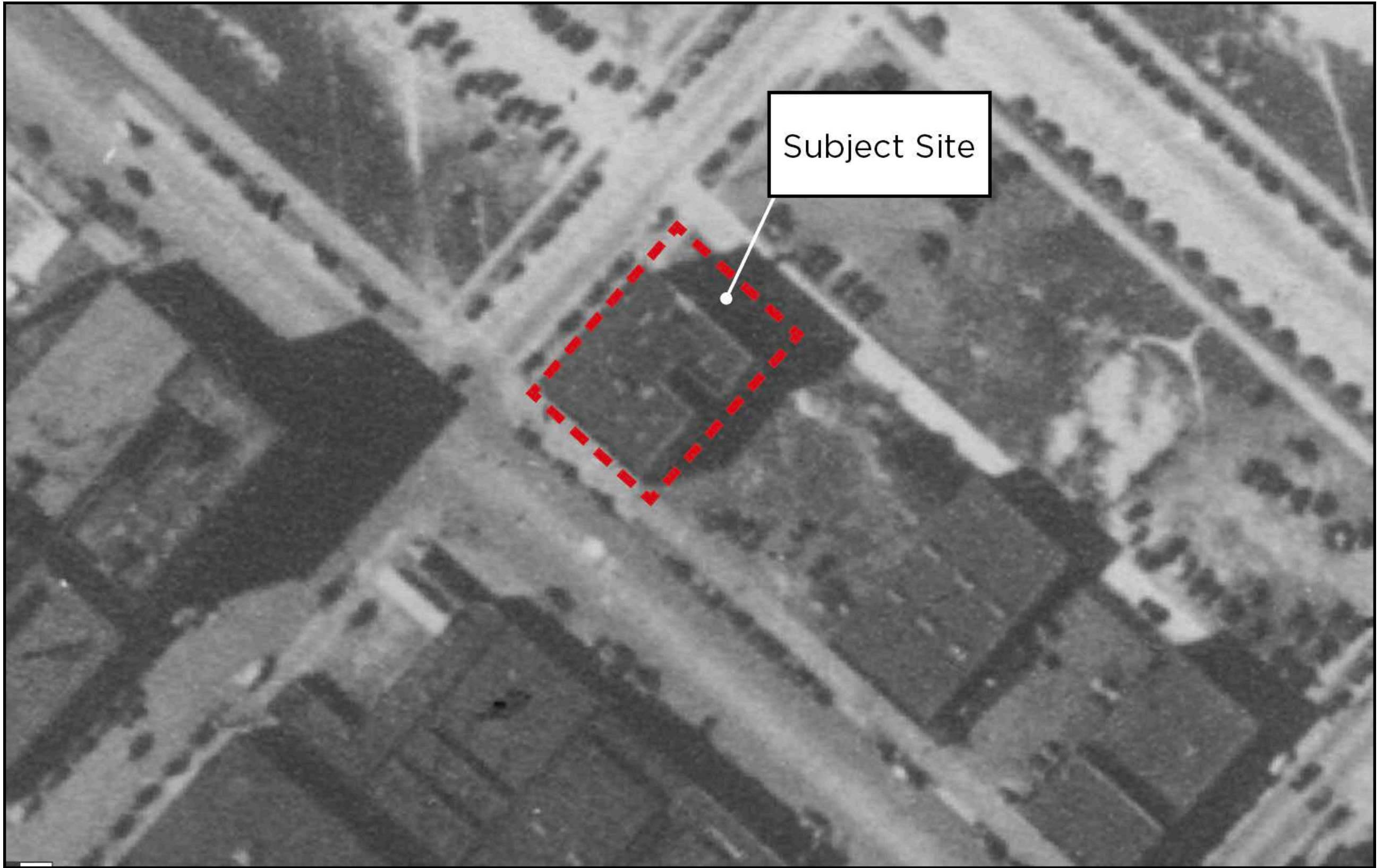
PHYSICAL INTEGRITY

An object, site or improvement which is more than twenty-five (25) years old may be designated for preservation as a landmark site or landmark if it has significant character, interest or value as part of the development, heritage or cultural characteristics of the city, state, or nation, if it has integrity or the ability to convey its significance.



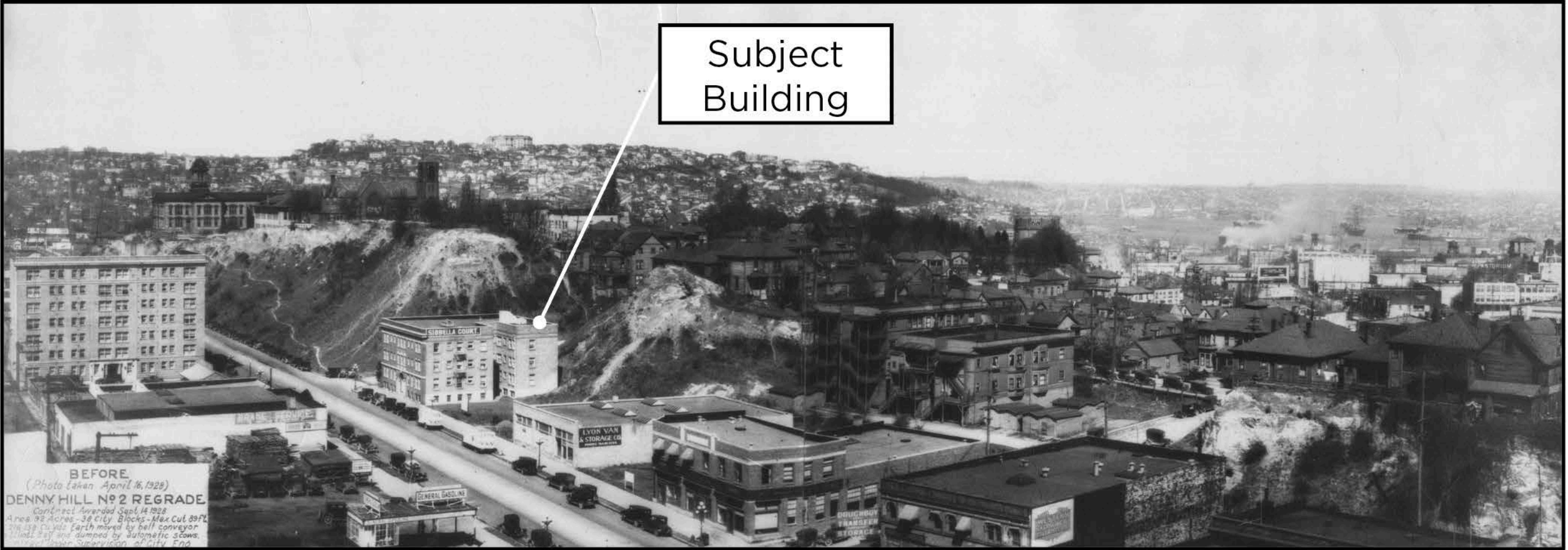
Site & Building History





1936

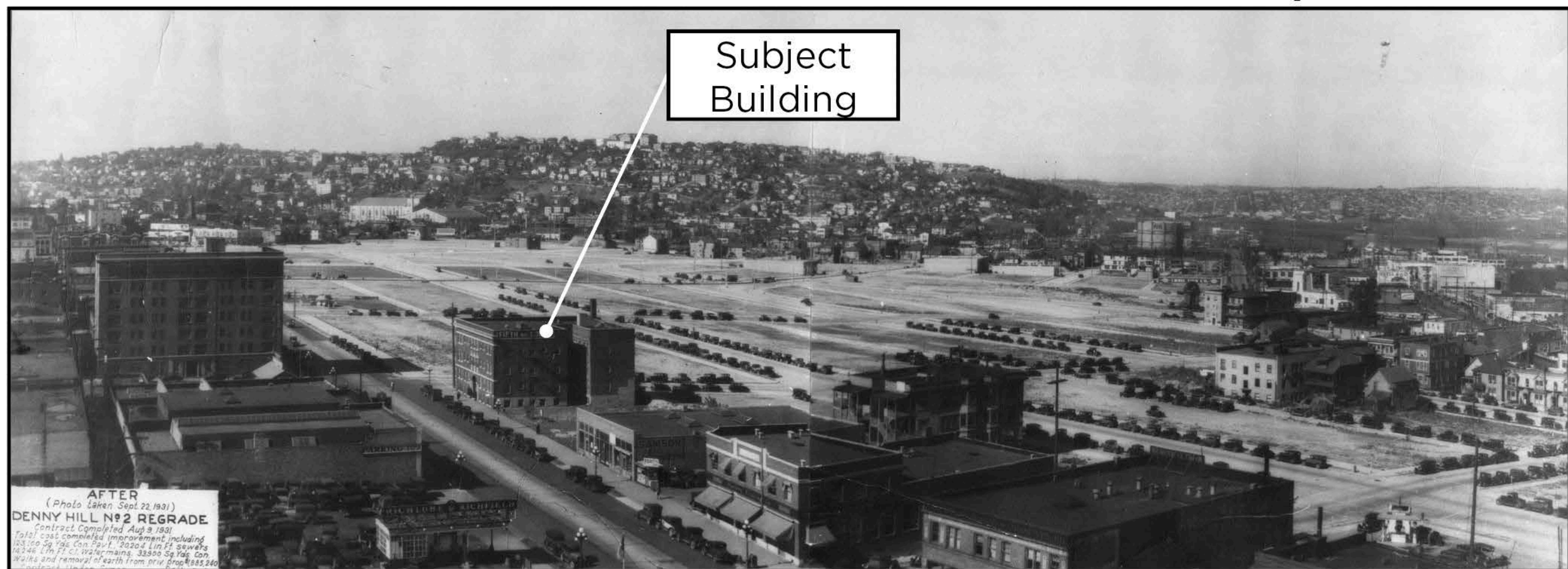
Subject
Building



Denny Regrade, 1928

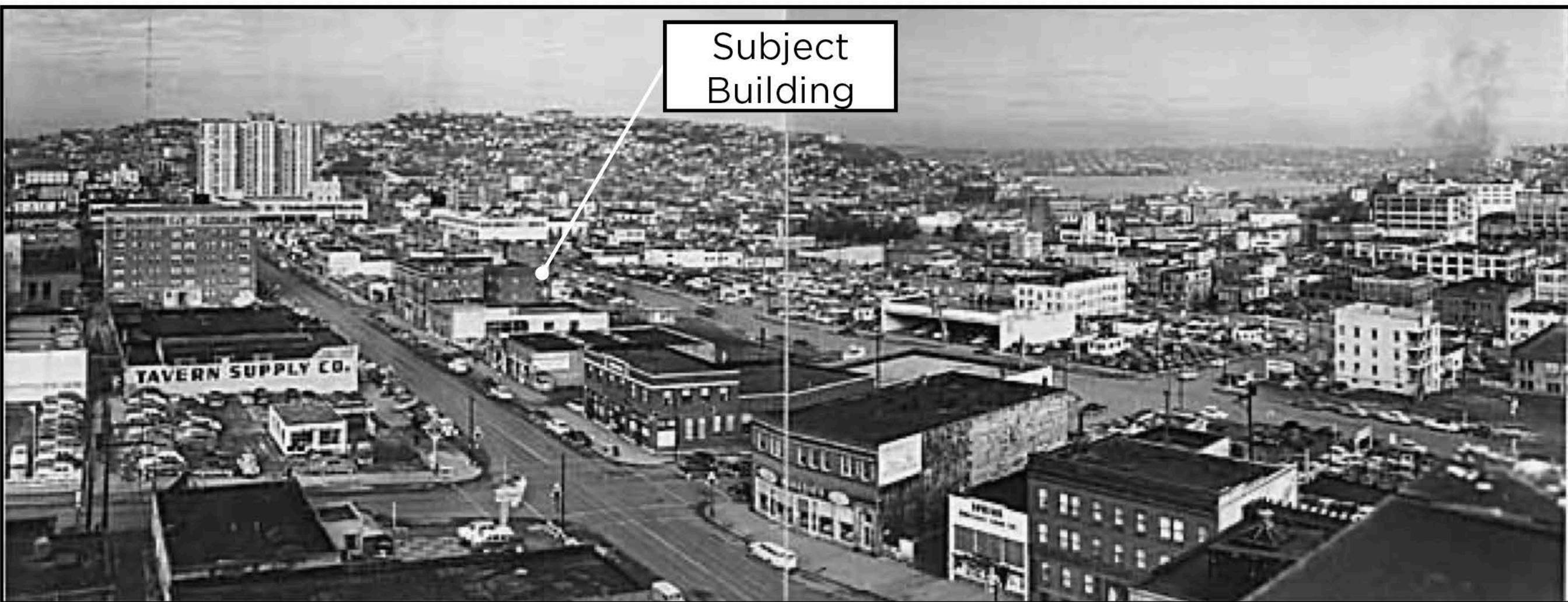


Denny Regrade, 1929



Denny Regrade, 1931





Denny Regrade, (long!) after 1931







1986



SIX CRITERIA FOR LANDMARK DESIGNATION

A. It is the location of or is associated in a significant way with an historic **event** with a significant effect upon the community, city, state, or nation.

- A. It is the location of or is associated in a significant way with an historic **event** with a significant effect upon the community, city, state, or nation.
- B. It is associated in a significant way with the life of a **person** important in the history of the city, state, or nation.

- A. It is the location of or is associated in a significant way with an historic **event** with a significant effect upon the community, city, state, or nation.
- B. It is associated in a significant way with the life of a **person** important in the history of the city, state, or nation.
- C. It is associated in a significant way with a significant aspect of the cultural, political, or economic **heritage** of the community, city, state or nation.

- A. It is the location of or is associated in a significant way with an historic **event** with a significant effect upon the community, city, state, or nation.
- B. It is associated in a significant way with the life of a **person** important in the history of the city, state, or nation.
- C. It is associated in a significant way with a significant aspect of the cultural, political, or economic **heritage** of the community, city, state or nation.
- D. It embodies the distinctive visible characteristics of an architectural **style**, period, or method of construction.

APARTMENT DEVELOPMENT IN SEATTLE



Chelsea Apartments (City of Seattle Landmark), Queen Anne circa 1906

APARTMENT DEVELOPMENT IN SEATTLE



Old Colony Apartments, First Hill, ca. 1910

APARTMENT DEVELOPMENT IN SEATTLE



Moore Hotel (City of Seattle Landmark) , Denny Regrade, 1909

APARTMENT DEVELOPMENT IN SEATTLE



Charlesgate Apartments, Belltown, 1922

APARTMENT DEVELOPMENT IN SEATTLE



Stone Cliff Apartments, Denny Regrade, 1923

APARTMENT DEVELOPMENT IN SEATTLE



Cornelius Apartments, Belltown, 1925

APARTMENT DEVELOPMENT IN SEATTLE



Davenport Apartments, Denny Regrade, 1925

APARTMENT DEVELOPMENT IN SEATTLE



Devonshire Apartments, Denny Regrade, 1925

- A. It is the location of or is associated in a significant way with an historic **event** with a significant effect upon the community, city, state, or nation.
- B. It is associated in a significant way with the life of a **person** important in the history of the city, state, or nation.
- C. It is associated in a significant way with a significant aspect of the cultural, political, or economic **heritage** of the community, city, state or nation.
- D. It embodies the distinctive visible characteristics of an architectural **style**, period, or method of construction.
- E. It is an outstanding work of a **designer or builder**.

LAWTON & MOLDENHOUR



Castle Apartments (1918, Lawton & Moldenhour, City of Seattle Landmark)



Franklin Apartments (1918, Lawton & Moldenhour, City of Seattle Landmark)

LAWTON & MOLDENHOUR: BUILDINGS IN SEATTLE



LAWTON & MOLDENHOUR: BUILDINGS IN SEATTLE



- A. It is the location of or is associated in a significant way with an historic **event** with a significant effect upon the community, city, state, or nation.
- B. It is associated in a significant way with the life of a **person** important in the history of the city, state, or nation.
- C. It is associated in a significant way with a significant aspect of the cultural, political, or economic **heritage** of the community, city, state or nation.
- D. It embodies the distinctive visible characteristics of an architectural **style**, period, or method of construction.
- E. It is an outstanding work of a **designer or builder**.
- F. Because of its prominence of spatial **location**, contrast of siting, age, or scale, it is an easily identifiable feature of its neighborhood or the city and contributes to the distinctive quality or identity of such neighborhood or city.

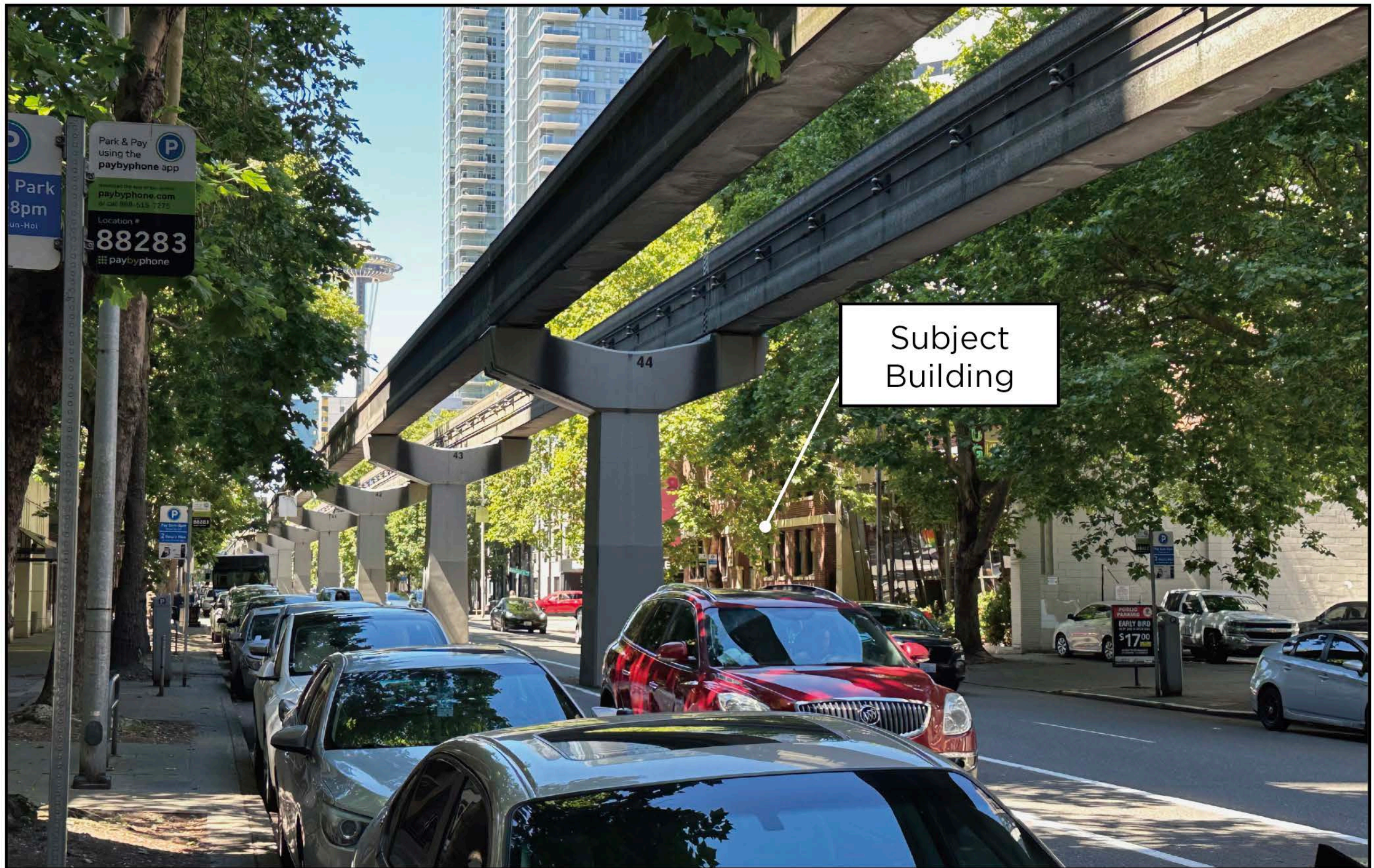


Figure 3 • View A: Viewing northwest along Fifth Avenue



Figure 4 • View B: Viewing northeast along Blanchard Street



Figure 5 • View C: Viewing southeast along Fifth Avenue



Figure 6 • View D: Viewing southwest along Blanchard Street

- A. It is the location of or is associated in a significant way with an historic **event** with a significant effect upon the community, city, state, or nation.
- B. It is associated in a significant way with the life of a **person** important in the history of the city, state, or nation.
- C. It is associated in a significant way with a significant aspect of the cultural, political, or economic **heritage** of the community, city, state or nation.
- D. It embodies the distinctive visible characteristics of an architectural **style**, period, or method of construction.
- E. It is an outstanding work of a **designer or builder**.
- F. Because of its prominence of spatial **location**, contrast of siting, age, or scale, it is an easily identifiable feature of its neighborhood or the city and contributes to the distinctive quality or identity of such neighborhood or city.



FIFTH AVENUE COURT

2135 FIFTH AVENUE