



The City of Seattle

Landmarks Preservation Board

Mailing Address: PO Box 94649, Seattle WA 98124-4649

Street Address: 600 4th Avenue, 4th Floor

Name: Queen Anne Pool

Year Built: 1977

Street and Number: 1920 1st Avenue W

Assessor's File No: 1794501150

Legal Description: Lots 9-16, Block 10, Cove Addition to the City of Seattle, State of Washington, recorded in Volume 1, Page 73 of Plats, King County, Washington.

Plat Name: Cove
Addition

Block: 10

Lot: 9-16

Present Owner: Seattle Parks and Recreation, City of Seattle

Present Use: Swimming pool

Address: 300 Elliott Avenue W, Ste. 100, Seattle, WA, 98119

Original Owner: City of Seattle

Original Use: Public swimming pool

Architects: Benjamin F. McAdoo & Company

Landscape Architect: Richard Carothers Associates

Builder: Frodesen & Associates

Submitted by: Katie Pratt and Spencer Howard, Northwest Vernacular
on behalf of the Queen Anne Historical Society

Address: PO Box 456, Bremerton, WA 98337

Phone: (360) 813-0772

Date: 12/5/2023

Reviewed:

Date:

(Historic Preservation Officer)



Queen Anne Pool



Table of Contents

Landmarks Page	1
1. Property Data	4
2. Architectural Description	4
<i>Setting and Site</i>	5
<i>Building and Changes Through Time</i>	7
3. Historic Context and Significance	11
<i>Neighborhood Context: Queen Anne</i>	11
<i>Forward Thrust</i>	12
<i>Construction and Use of the Building</i>	14
<i>Architectural Context</i>	15
4. Bibliography	17
5. Figure List	19



1. Property Data

Historic/Current Name:	Queen Anne Pool
Address:	1920 1 st Avenue W
Site Location:	Located in the Queen Anne neighborhood, along 1 st Avenue West, between West Crockett and West Howe streets.
Tax Parcel Number:	1794501150
Legal Description:	Lots 9-16, Block 10, Cove Addition to the City of Seattle, State of Washington, recorded in Volume 1, Page 73 of Plats, King County, Washington.
Original Construction Date:	1977
Original/Present Use:	Public swimming pool
Original Architects:	Benjamin F. McAdoo & Company
Landscape Architect	Richard Carothers Associates
Builder:	Frodesen & Associates
Building Size:	13,300 gross square feet, generally 105 by 107 feet
Original/Present Owner:	Seattle Parks and Recreation
Owner's Representative:	Kevin Bergsrud Senior Planning and Development Specialist Seattle Parks and Recreation Kevin.Bergsrud@Seattle.gov
Owner's Consultant:	Katie Pratt and Spencer Howard Northwest Vernacular P.O. Box 456 Bremerton, WA 98337

2. Architectural Description

This nomination addresses the Queen Anne Pool. This property includes the site, and the building with the indoor swimming pool. Occupying a full half-block in the Queen Anne neighborhood, the property fronts McClure Middle School and the Queen Anne Community Center across 1st Avenue West and is diagonally northeast from the West Queen Anne Playfield. Residential and mixed-use development occupies the blocks to the south across West Howe Street and north across West Crockett Street, and the half block east across the alley.

The reinforced concrete building has a T-shaped plan and running bond brick veneer as the exterior finish. The top of the T, along 1st Avenue West, is a single story and the public point of entry. There is a partial basement. A flat roof with low parapets extends



over this portion of the building. The large, recessed front entrance connects users to the public and staff spaces, and access to the indoor swimming pool area. The rear one-and-a-half-story leg of the T contains the swimming pool. At the northwest corner a small portion of this volume extends north behind (west of) the front single-story portion. This portion of the building roof steps up to the south via a series of short roof slopes, mirroring the depth change within the swimming pool. A parapet wraps this roof portion.

The site consists of raised earth berms planted with lawn flanking the north and south sides of the building, tucking the building into the site. Mature trees screen the southeast and northeast corners of the building. Foundation plantings extend along the sides and front, with street and alley trees on all sides of the site. A dedicated parking lot occupies the north end of the site with access to West Crockett Street and a diagonal sidewalk at the southwest corner descending to the sidewalk along 1st Avenue West.

For contemporary images, see **Figures 6-38**. For a photograph key for the contemporary exterior images, see **Figure 5**.

SETTING AND SITE

Centrally located within the Queen Anne neighborhood, the property is on the west side of a block bounded on the east by Queen Anne Avenue North and on the west by 1st Avenue West. Queen Anne Avenue North is the neighborhood's main north to south commercial core and circulation arterial, as well as the east edge of the neighborhood's West Queen Anne subarea. The west half of blocks along Queen Anne Avenue North within the immediate vicinity are generally single-family residences with narrow spacing between residences. The Queen Anne Pool is notable in its visual blending in with this setting through the use of site grading and plantings. See **Figure 1**.

The site is bounded by 1st Avenue West on the west (front), West Crockett Street on the north, an alley along the east (rear), and West Howe Street on the south. Concrete sidewalks (6-feet wide) extend along the front and ends of the site. Wide planting strips (11-foot front, 8 to 9 foot and ends) with lawn and street trees exist between the sidewalks and street curb along the front and ends of the site. Street trees along the north end of the site consist of three *Acer rubrum* (Red maple) that range in trunk diameter from 20 to 23-inches. Street trees along the west front (eleven trees) and south end (4 trees) consist of *Prunus serrulata* (Double Chinese cherry) that range in trunk diameter from 2 to 18-inches. See **Figure 2**.

Circulation within the site utilizes short connections to the perimeter sidewalks. The public point of entry is a 50-foot-wide concrete walkway (repaved ca. 2022) linking 1st Avenue West to the front entrance, with added metal hand railings (ca. 2022) on either side, an added metal bike rack (ca. 2022), and two concrete bollards (ca. 2022) replacing the original four along the roadway curb. The entrance leads directly to the crosswalk connecting across 1st Avenue West to the McClure Middle School and the Queen Anne Community Center. The original site design for the Queen Anne Pool included this connection. Sloped original concrete walls (sloped from the top of the concrete foundation down to the sidewalk) retain the foundation planting areas flanking the entrance. Adjacent to each retaining wall are a pair of hexagonal (2-foot length sides) exposed aggregate concrete planters. Similar sloped concrete retaining walls

provide an added inset seating area (ca. 2002) south of the entrance along the sidewalk with two added metal and wood benches. See **Figures 6-9, 11, 13**.

The original 10-foot-wide concrete walkway the north end of the building provides staff access from the north end of the building to 1st Avenue West, and the route for moving the building's dumpster to the curb for pick up. A low, original U-shaped concrete screen wall with canted edges on the north side of this walkway encloses the dumpster location. An added, 5-foot-wide walkway (ca. 1990) flanked by low concrete curbs and metal railings descends from the original parking lot (112 by 63 feet, approximately 22 stalls) to the sidewalk along 1st Avenue West, bringing the public to the sidewalk connecting to the front entrance. This walkway was part of the original site design, but not built. It's later construction replaced a former direct connection from the sidewalk along the south side of the parking lot to the sidewalk along 1st Avenue West. See **Figures 4, 15**.

The overall site slopes from a grade level of around 385 feet at the east side (alley) down to 380 feet at the west side (1st Avenue West). Topography within the site is an original design feature and uses raised berms to enclose spaces. See **Figures 75-76**. Berms enclose the north and south sides of the building, and the north, west, and south sides of the parking lot. These berms slope down from a central, rounded ridge. Alterations in 1980 reduced the height of the south berm's ridge by one foot on average. A stone retaining wall at the southeast corner of the site extends along West Howe Street (22-feet, approximately 2 feet tall, squared rubble, beaded joints) and the alley (58-feet, 2-feet tall tapering north to grade, random rubble). The retaining wall, based on materials and the 1976 site survey, is attributed to the previous single-family residence at this location. See **Figures 10-11, 18, 23, 26**.

Vegetation throughout the site consists mainly of lawn, at the berms and planting strips. Trees planted within the site function as screens around the windowless building. Plant identification based on existing foliage, the 1976 Planting Plan and a 1980 Landscape Revisions plan. See **Figures 83-84**.

- Foundation plantings at the building's northwest and southwest corners, and front west facade enclose the shorter front portion of the building.
 - Plantings at the north end include an understory of *Hypericum calycinum* (St. John's Wort), *Viburnum davidi* (David Viburnum) or similar below multi leader *Acer circinatum*s (Vine maples) consistent with the original design and specified plantings. Added plantings include *Prunus laurocerasus* (Cherry laurel, ca. 1980), *Pinus mugo* Tura (Dwarf Mountain-pine, ca. 2002) or similar,. See **Figures 10-11**.
 - Plantings along the west side (ca. 2002) replace the original lawn and include an understory of grasses, *Spiraea japonica* (Japanese Spiraea), *Salvia rosmarinus* (Rosemary), *iburnum davidi* (David Viburnum) or similar below several ornamental deciduous trees, *Celtis occidentalis* (Hackberry) or similar. See **Figures 13-14**.
 - Trees added (ca. 1990s) along south side consist of seven, multi leader, small leaf ornamental deciduous trees, *Phillyrea latifolia* (Green Olive tree) or similar within an added narrow planting bed, the length of the one-story

front portion. A recently planted (ca. 2022) deciduous tree, *Nyssa sylvatica Marshall* (Black tupelo) or similar, is located on the berm directly south of the building's one-story portion. These plantings replace the original *Rhus typhina* (Staghorn Sumac) and lawn in these areas. See **Figures 23-24**.

- Trees at the northeast and southeast building corners and along the rear alley enclose the taller rear portion of the building.
 - Southeast trees, from adjacent the building south to the sidewalk are added (post 1980) except for the large *Catalpa sp.* (Catalpa or similar) near the intersection of the alley and West Howe Street that predates the building construction. The added trees consist of a mature multi-leader *Thuja plicata* (Western Red cedar) and *Betula sp.* (Common Birch or similar) birch (along south side of one-and-a-half-story portion). See **Figures 26-27**.
 - Alley shrubs, are added (1980) *Viburnum tinus* (Laurestine) or similar ornamental multi leader shrubs within the planting strip. These replace the original *Viburnum davidi* (David Viburnum) and *Parthenocissus tricuspidata* (Boston Ivy). A concrete curb separates the planting strip from the alley. See **Figures 28-29**.
 - Northeast trees include *Acer circinatum*s (Vine maples) consistent with the original planting plan and originally with an understory of *Hypericum calycinum* (St. John's Wort) that no longer remains. Added (ca. 1990s) plantings include Western Red cedar and Birch trees. Near the southeast corner of the parking lot are several added (ca. 1990s) evergreen trees *Chamaecyparis lawsoniana* (Lawson's cypress) or similar and two *Chamaecyparis obtusa* (Hinoki false cypress) or similar nearby with an understory of *Berberis aquifolium* (Oregon-grape). These replaced *Styrax Japonica* (Japanese Snowbell) that extended in a line along the south edge of the parking lot. See **Figures 30-31**.
 - The screen wall at the dumpster includes base plantings. The planting area was added in 1980 and the plantings of *Nandina domestica* (Heavenly bamboo) and *Hypericum calycinum* (St. John's Wort) added ca. 1990s to early 2000s. See **Figures 10-11**.
 - Trees added (ca. 1990s) along the north and west sides of parking lot provide screening for the parking area. These replace the original *Rhus typhina* (Staghorn Sumac) specified for these planting areas. These consist of several multi leader pine or similar along the north edge with a large deciduous tree, *Pistacia chinensis Bunge* (Chinese pistache) or similar at the southwest corner. See **Figures 33-34**.

BUILDING AND CHANGES THROUGH TIME

This narrative addresses the architectural character of the Queen Anne Pool building and changes through time. With the exception of the main entrance, the building does not have windows.



Foundation and Structure

A reinforced concrete, grade beam perimeter foundation supports the exterior walls.

Running bond brick veneer is the exterior finish. Brick type at the front single-story portion is Meridian or similar, measuring 3-1/2 by 3-1/2 by 15-1/2 inches with 1/2-inch mortar joints. A slightly shorter, Utility type or similar brick is used only at the front facade of the upper half story. Bricks are reddish-brown in color with slight color variations across the brick. A soldier course band extends along the top edge of the building's parapets. Large metal louvers occupy a portion of the north facade's west end. Alterations include painting of the lower portion brickwork along the north and south facades. Through wall anchors with round rosettes have been added on the south facade at two locations. See **Figures 7, 9, 79**.

Roof

A flat roof spans the front single-story portion. Low-pitch Warren trusses support this roof over the lobby space. An asymmetrical faceted roof spans the indoor swimming pool volume and provides clearance above the three-meter diving tower at the north end of the pool. This roof is divided into a series of flat and sloped sections. The stepped-up portions of this roof mirrors the changes in depth within the swimming pool. See **Figure 80**. Exposed glulam beams, stained dark to blend with the bricks, support the roof over the indoor swimming pool. A steel rod extends below the southernmost beam (replaced in-kind in 1997). Exposed stained wood rafters carrying the flat and sloped roof sections. The north and south roof slopes are the same pitch and separated by flat roof sections with low parapets. Low parapets extend around the perimeter of the building's roofs. Sheet metal copings extend along the parapets. To access the half story roof portions, metal ladders attached to the west facade of the half story wall portion provide access from the lower roof. Corrugated metal, red to terra cotta in color, is the roofing material at the roof slopes, with composition roofing (1990) at the flat roof portions. Multiple light skylights (1990 replaced) are in the outer portions of the roof. Exterior metal downspouts provided drainage for the roofs. Metal scuppers extend through the parapets to support water movement between roof levels and discharging from the lower roof. Large, painted sheet metal mechanical systems at the lower and upper roof portions support the ventilation needs for the indoor swimming pool. These extend out from the wall with a concrete sill. See **Figures 7, 9-10, 24**.

Entrances

The building's original main public entrance is on the west facade. Secondary original service entrances are on the north and south facades.

Main Entrance

The front main entrance is offset slightly north of center on the front facade. Recessed within the facade, the entrance's south end is canted, and the north end stepped straight back. The entrance is split into six, 6-foot-wide bays. A pair of centrally placed single light metal doors with metal pulls provide interior access. Painted metal framing carried on a concrete bulkhead supports the doors, side lights, transoms, and solid panels (originally designed as tinted glass windows) within the entrance. Fixed single light side lights flank the doorway. Painted composite panels comprise the outer two north and south bays. Fixed light transom sashes above the transom bar within each



bay provide day lighting to the lobby and via relites to the main pool volume. A single light fixture is mounted to the entry soffit. See **Figures 7, 12-14**.

An added metal frame, vinyl clad awning (ca. 2002) projects out at the front entrance with the facility name “Queen Anne Aquatic Center” across the front. Added wall mounted fluorescent light fixtures provide back lighting for the awning. Alterations include added security panels over the lower portion of the front doors, and the front awning.

Service Entrances

Service entrances provide staff access to and from the building. They have brick headers. On the north facade a pair of doors with louvers and added security screens open to a mechanical space supporting chlorination of the swimming pool. Directly east, a flush panel metal door with a lower vent provides access to another mechanical space. The north concrete walkway extends to both doorways. Two doorways, one at each at the north and south ends of the building portion containing the indoor swimming pool provide an egress function. These doorways do not connect to perimeter sidewalks. They are flush panel metal doors, have interior panic bars, but do not have exterior hardware. The south doorway has a small exterior concrete landing. See **Figure 10**.

Interior

The interior consists of a single floor, with some slight variation in flooring levels within the floor. See **Figure 77**.

Public and Staff Volumes

The front single-story portion of the building is organized around the central lobby that connects through to the pool volume. The cashier space is on the south side of the lobby and flanked by doorways leading to the locker rooms, showers, and restrooms. Hallways at the south end of the showers direct pool users out to the pool volume. North of the lobby is a vending area, restrooms, staff changing areas, mechanical and storage spaces, and the office overlooking the pool volume. A drop T-bar ceiling extends through the front entrance. A series of relites between the east side of the entrance volume and the swimming pool volume provide visibility between the spaces. The fixed lights are set in painted metal frames above a low concrete bulkhead. Personnel doorways providing access between spaces have a tall light.

Natatorium

The natatorium, the volume containing the indoor swimming pool, consists of exposed concrete foundation walls and brick at the upper wall portions. The volume is partially below grade on the east side along the alley, and at grade at the west side. Thin, vertical wood slats (acoustical screen) wrap around the lower portion of the walls (concrete along the east side, brick at the other walls), except at the north and south egress doorways. Replacement pendant light fixtures (post 2018) provide lighting. Round metal duct work extends along the upper portion of the west and north walls. Metal flush panel doors in the north end of the volume provide staff access to mechanical spaces. See **Figures 36-38**.



On the west side, six bays of tall glass relites link the pool and lobby volumes. An enclosed booth projects out from the lobby at the northwest end of the pool for staff monitoring of the pool area. A sauna is available for public use.

The 25-yard concrete swimming pool (75 by 43 feet) extends to 12-feet in depth (north end) and tapers to 3-feet in depth at the south end. A concrete deck extends around the concrete pool. Original diving towers, 1- and 3-meter, are located at the north end of the pool, along with short starting platforms. A rope swing is suspended from a glulam beam over the northcentral portion (deep end) of the pool. Metal lifeguard seats are located along the east and west sides of the pool. Concrete stairs with metal railings in the southeast corner of the pool provide access. Treads have blue tile nosing and enter the pool at the 3-foot-deep section. Pool covers are suspended above the pool deck at the south end of the pool. An added accessible lift supports universal access to the pool.

Alterations

The chronological listing of known alterations follows below. Changes for which the specific date are not known are identified by ranges based on available background information. Both interior and exterior changes are addressed in the following list.

1980, revisions to the site landscaping replacing some existing and adding new plantings and lawn along with a slight reduction in the south berm's height.

Ca. 1990, installation of the diagonal walkway from the parking lot to the sidewalk along 1st Avenue West.

1990 (contract no. 1403) replaced the building's roofing. This work reinstalled existing metal roofing, installed new skylights and composite roofing.

1995 (permit 679044) replaced the pool's heating and ventilation equipment with a new rooftop recovery unit.

1997 (permit 692936) emergency storm repairs to replace a damaged glulam beam and add roof joists at the south end of the natatorium. The work involved removing a section of the brick at the west exterior wall and adding rollers to slide the beam in from the west while providing temporary bracing within the building to support the roof structure.

2000 (permit 001227-011), installation of the front quarter barrel awning. Installation of the front inset seating area along 1st Avenue West occurred during this same time period.

2019 (permit 6616134) for alterations and repairs to the pool including new pool slab placement. Existing pendant fixtures replaced black round pendant light fixtures suspended from the ceiling above the perimeter pool deck. The base and reinforcing steel for the ADA lift in the southeast corner of the pool occurred at this same time (permit 6616134). Work also included repairs to a beam in the basement.

Ca. 2022, replacement of concrete at the front entrance sidewalk, bollard replacement, and bike rack and railing installation.



3. Historic Context and Significance

The Queen Anne Pool was completed in 1977 as part of the Forward Thrust parks movement in Seattle during the late 1960s and early 1970s. The building was designed by Benjamin F. McAdoo, Jr., the first Black architect to practice in Washington State and the founder of the first African American-owned architecture firm in the state. The pool building continues to house a community pool, operated by the Seattle Parks and Recreation Department.

Prior to the site's construction as a pool in the mid-20th century, within a neighborhood in the city of Seattle developed by white Euro-American settler-colonists in the mid-19th century, the hill along with the surrounding area was home to Coast Salish people, including the ancestors of the present-day tribes of the Suquamish, Stillaguamish, and Muckleshoot, and the non-federally recognized Duwamish Tribe. The land of the greater Puget Sound region, including Queen Anne, has been their home since time immemorial.

The area now known as Uptown was once a prairie marked by salal patches (Little or Large Prairie—babáq^wab or báq^wbaq^wab), with trails connecting Lake Union to Elliott Bay, camping places, and shellfish processing sites.¹ The abundant natural resources of the land and the surrounding fresh and salt waterways provided plentifully for the Coast Salish. They hunted local game, fished the rivers and sea, harvested shellfish, gathered roots and berries, and used native trees and their bark to carve canoes, build their homes, and weave baskets.

White Euro-Americans arrived in the greater Puget Sound region to colonize and claim the land as their own beginning in the early 1800s. Their arrival profoundly impacted the lifeways of the Coast Salish people, with escalating consequences as the number of Euro-Americans steadily increased following the Denny Party's arrival in 1852. Once Washington Territory was established in 1853, Territorial Governor Isaac Stevens initiated a series of treaty conferences with Native Americans who were living within the boundaries of the newly formed territory. These conferences were to convince Native Americans to give up their lands to the U.S. Government and relocate to specified reservations. There were five treaties signed in western Washington: Medicine Creek, Neah Bay, Olympia, Point Elliott, and Point No Point. The Treaty of Point Elliott (1855) was signed by representatives of the Duwamish, Suquamish, and Snohomish people and created the Tulalip, Port Madison, Swinomish, and Lummi reservations. The Duwamish did not receive their own reservation.

NEIGHBORHOOD CONTEXT: QUEEN ANNE²

The neighborhood known today as Queen Anne is one of the oldest established residential neighborhoods in Seattle. A government survey of Township 25 North, Range 3 East occurred in the early 1850s, where Queen Anne is now located, and between 1853 and 1859, 15 Euro-American land claims were filed within the township.

¹ Coll Thrush, Nile Thompson, Amir Sheikh, "An Atlas of Indigenous Seattle," in *Native Seattle: Histories from the Crossing-Over Place* (Seattle and London: University of Washington Press, 2007), e-book.

² Unless otherwise cited, the neighborhood context is summarized from two historic context statements: "Queen Anne Historic Context Statement" and "Queen Anne Historic Context Statement Update: 1963-2012."



The names of these early individuals and families continue in the area, with Mercer Street after Thomas Mercer; Denny Way after David Denny and his wife, Louisa Boren Denny; and Smith Cove after Dr. Henry Smith and his mother, Abigail, and sister, Ellender. Queen Anne Hill remained relatively remote through the 1860s until David Denny, along with his father, John, subdivided part of their family's land claim (between Mercer Street and Denny Way, Warren Street and Elliott Bay) and platted it as Plan of North Seattle. The Denny family, as well as the Mercer family, continued to subdivide their land holdings on Queen Anne hill in the early 1870s. Subsequently, six plats were filed between 1869 and 1879. Additional plats occurred over the next decade, with construction following, and by the mid-1880s, the name "Queen Anne Town" appeared in advertisements for the area. Supposedly named by the Reverend Daniel Bagley, the name is attributed to the number of Queen Anne-style homes built on the hill. By the 1890s, construction was still limited to present-day Uptown, formerly known as Lower Queen Anne, and the south slope of the hill but nearly 75 percent of the hill had been platted.

The existing built environment character of Queen Anne began to solidify by the end of the 1910s as infrastructure (i.e., streets, streetcar lines, sewer and water systems, major parks) was constructed. Patterns of commercial and residential development were clearly established during this period and the neighborhood matured through Seattle's construction boom of the 1920s. By the time the Great Depression struck in 1929, much of Queen Anne was built out and had progressed from a suburb to "a 'close-in' urban district."³ During the Depression and World War II era, there were a number of public works projects completed with significant impact within and around the Queen Anne neighborhood, including the Aurora Bridge (1931-32, Seattle Landmark), North Queen Anne Drive Bridge (1936, Seattle Landmark), the Amory in Uptown (1939, Seattle Landmark), and pedestrian stairs and pathways throughout the hill.

In the post-WWII era, real estate development and construction boomed in Seattle alongside the metropolitan area's largest employer, the Boeing Company. To address the population growth, Seattle and the surrounding suburbs joined together to form METRO, a regional transit and wastewater treatment agency in 1958. Seattle also hosted a second world's fair in 1962, the Century 21 Exposition, establishing a civic center site at the southern base of Queen Anne hill. The Forward Thrust program—implemented city- and county-wide—had tangible impacts for Queen Anne with new park construction and revitalization of existing parks. Additionally, during the 1960s and 1970s economic development spurred the development of taller and larger buildings.

FORWARD THRUST

Forward Thrust was a series of bond authorization issues approved by voters in 1968. It began as a countywide effort in the mid-1960s to plan for the future of King County, recognizing that the rapid growth of the Seattle/King County area created demand for capital improvements. Population growth forecasts in 1965 predicted King County's

³ Florence K. Lentz and Mimi Sheridan, "Queen Anne Historic Context Statement," prepared for the Seattle Department of Neighborhoods, Historic Preservation Program, and the Queen Anne Historical Society (October 2005), 20, <https://www.seattle.gov/documents/Departments/Neighborhoods/HistoricPreservation/HistoricResourcesSurvey/context-queen-anne.pdf>.



population could double in 20 years and government officials and interested citizens were worried that the region was not prepared to address the challenges associated with such tremendous growth. Community advocate and attorney James Ellis (1921-2019) had raised the alarm about this issue in the 1950s to little avail. However, in November 1965, Ellis addressed members at a Rotary Club of Seattle meeting proposed organizing a group of citizens to push for planning and funding for significant capital improvement programs.⁴

A group of 200 citizens participated in the planning for the county and city's growth over the course of two years. After the study was concluded, a package of capital improvement programs was presented to King County and Seattle voters. Seven of the 12 propositions were approved, authorizing \$333,900,000 in bond issues to begin a 12-year program of community projects. Within the Forward Thrust program, \$118 million was allocated for a countywide parks and recreation program, with \$65 million of that allocation set aside for the City of Seattle in five specific ways:

- Acquire major waterfront and other park space as well as improve existing parks.
- Improve Woodland Park Zoo.
- Add neighborhood parks, playgrounds, and playfields for organized athletics.
- Build swimming pools and recreation centers.
- Develop downtown parks, as well as a park on Seattle's central waterfront and an aquarium.

According to a report from the Seattle Parks and Recreation Department at the program's halfway point, "Forward Thrust projects make up a balanced program to expand and improve Seattle's public recreation facilities and urban open space."⁵ By January 1975, when the progress report was submitted, Seattle Parks and Recreation had completed 125 of the nearly 200 projects slated for the program. As of 1975, Forward Thrust resulted in "the single largest expansion of public athletic facilities in Seattle's history."⁶

Within the larger program, the construction of public swimming pools was just one small portion of Forward Thrust with seven pools slated for construction. Four indoor swimming pools were completed by 1975: Medgar Evers (500 23rd Avenue), Capt. Wm. R. Ballard (1471 NW 67th Street), Helene Madison (13401 Meridian Avenue N), and Rainier Beach (8825 Rainier Avenue, replaced in 2013). Two more were under construction at Sealth and Meadowbrook (10515 35th Avenue NE). And the final pool, the Queen Anne Pool, was set for development but not yet constructed.

⁴ William H. Mullins, "The Persistence of Progressivism: James Ellis and the Forward Thrust Campaign," *Pacific Northwest Quarterly* (Spring 2014), <https://www.washington.edu/uwired/outreach/cspn/Website/Articles/Mullins/ForwardThrust.html> (accessed August 21, 2023).

⁵ Your Seattle Parks and Recreation, "Forward Thrust at the Halfway Mark," progress report to Seattle City Council (1975). Available via Seattle Municipal Archives.

⁶ Your Seattle Parks and Recreation, "Forward Thrust at the Halfway Mark," 10.

CONSTRUCTION AND USE OF THE BUILDING

Following voter approval of the Forward Thrust bond issues, planning began by the Seattle Park Department, under supervision of then Park Superintendent Hans Thompson. For new construction projects, the planning process also required court action to acquire property by condemnation.⁷ By July 1972, the Queen Anne Pool was delayed, with the Seattle Park Department citing lack of open space and the high cost of property as factors. The Forward Thrust bond resolution required the new pools to be built “at or near” high schools. And although Queen Anne was a proposed location for a new pool, there was no available land near Queen Anne High School. Superintendent Thompson proposed a location near McClure Junior High School adjacent the existing Queen Anne Recreation Center, but that site required additional funds to purchase nearly one-and-a-half acres of houses to raze for the pool building. However, the bond issues only cover construction, not acquisition costs for pools. Debate then began over the site of a proposed Queen Anne Pool with residents of Queen Anne and Magnolia debating over the location of the pool. Queen Anne residents wanted a site near McClure Junior High School while Magnolia residents argued for an Interbay location.⁸ A report was prepared to outline costs to purchase the land and negotiations began with the City Council and School District to help fund the acquisition costs.⁹ An environmental impact statement (EIS) was prepared in 1973 for the site near McClure Junior High School, which included 10 residences. Acquisition costs for the houses and relocation of the families were estimated at \$325,000 to be paid by the Parks and Recreation Fund.¹⁰

Benjamin F. McAdoo was selected to design the swimming pool on Queen Anne Hill in November 1974.¹¹ Donald Harris with the Seattle Park Department was the project manager. The contractor for the project was Frodesen & Associates was selected in May 1976 with a low bid of \$764,900.¹² Frodesen & Associates completed the pool for \$843,000.¹³

Construction on the Queen Anne Pool began in July 1976. The design was completed by Benjamin F. McAdoo & Co. and was the same size as the new Ballard, Meadowbrook, and Sealth pools at 75 by 43 feet.¹⁴ The building included lockers, bleachers, showers, and offices. While the Queen Anne Pool was intended to be one of the first pools constructed as part of the Forward Thrust program of capital improvements in Seattle, it was the seventh and final pool built. The pool opened to the public on November 10, 1977.¹⁵ However, its opening was not without delay, just like its construction, as the opening was originally planned for November 9th but a snafu with the pool’s thermostat accidentally heated the pool to a sweltering 100 degrees.¹⁶ The

⁷ Val Varney, “Forward Thrust Parks are on Schedule,” *The Seattle Times*, December 20, 1970: 7.

⁸ “McClure Site Favored for Queen Anne Pool,” *Seattle Post-Intelligencer*, October 3, 1978: A8; “City to Take Plunge on Queen Anne Pool,” *Seattle Post-Intelligencer*, May 31, 1973: C15.

⁹ Val Varney, “High Costs, Lack of Space Delaying Pool,” *The Seattle Times*, July 30, 1972: B2.

¹⁰ Val Varney, “Queen Anne Pool Study Distributed,” *The Seattle Times*, April 11, 1973: B7.

¹¹ “Architect for Swimming Pool Selected,” *The Seattle Times*, November 12, 1974: B2.

¹² “Firm Makes Low Bid on Last Pool,” *The Seattle Times*, May 16, 1976: G6.

¹³ Neil Modie, “Bleached Bricks Pull Plug on Pool,” *Seattle Post-Intelligencer*, August 30, 1978, A9.

¹⁴ “Work on New Pool to Begin Next Spring,” *The Seattle Times*, November 16, 1975: B2.

¹⁵ Neil Modie, “Bleached Bricks Pull Plug on Pool.”

¹⁶ “Too Hot to Swim,” *Seattle Post-Intelligencer*, November 9, 1977: A-4.



pool's formal dedication, led by Mayor West Uhlman, occurred on November 21, 1977.¹⁷ Only 10 months after the pool opened, it was briefly closed to dampproof the building.¹⁸ The interior red brick began turning white from efflorescence, which happens when evaporating water leaves behind salt deposits on the brick. The humidity inside the pool building and the dampproofing on the exterior of the brick lead to the white powder forming on the interior brick.

The 75-foot Queen Anne Pool has continued to operate as a community pool since it first opened in 1977. The Queen Anne Pool building features its lap pool, sauna, 1- and 3-meter diving boards, rope swing, stair entry, and accessible lift. The pool hosts a wide range of programs and special events.

ARCHITECTURAL CONTEXT

The architect of the Queen Anne Pool, Benjamin F. McAdoo, Jr., was known for his blending of regionalism and modernism. During his career, he completed over 500 professional works, from small residences to large institutional projects. The contractor for the project was Frodesen & Associates.

Style

The Queen Anne Pool is a Modern style building with a simple exterior. Its Modern stylistic elements are most visible on the interior, with its exposed concrete stem wall, thin wood slat paneling, exposed brick walls, and exposed glulam beams. Each of the pools constructed during the Forward Thrust have their own unique design and embody a range of mid-20th century architectural styles, with the Brutalist Medgar Evers Pool, New Formalist Southwest Pool, and Contemporary Meadowbrook Pool (**see Figures 71-74**). McAdoo's design for the Queen Anne Pool blends a Modern design with the surrounding neighborhood, following the scale and material palette of the adjacent McClure Junior High School (now McClure Middle School) and Queen Anne Community Center. The Queen Anne Pool also gives a nod to earlier periods of architecture with its stepped parapet. McAdoo's pool design, in comparison to other Forward Thrust pools, is an example of compatible infill. It clearly stands as a building of the era in which it was designed and constructed, but the building's materials and design blend rather than stand out from neighboring buildings.

Architect – Benjamin F. McAdoo, Jr.¹⁹

Benjamin Franklin McAdoo, Jr., was born to parents Benjamin McAdoo and Alferetta Derousell McAdoo on October 29, 1920, in Pasadena, California. The McAdoo family lived in a racially segregated neighborhood alongside Chinese American and Mexican American residents. McAdoo spent his childhood and early adulthood in California. He began his architectural studies at Pasadena City College and then continued at

¹⁷ Gail Collins, "Around the Sound: Pool Dedication," *Seattle Post-Intelligencer*, November 20, 1977: C-7.

¹⁸ Neil Modie, "Bleached Bricks Pull Plug on Pool."

¹⁹ Unless otherwise noted, the biography of Benjamin F. McAdoo, Jr., is summarized from several sources. An ongoing effort to document and celebrate the legacy of McAdoo's career, known as the Benjamin McAdoo, Jr. Research Collective, is occurring through a partnership with the University of Washington, Docomomo US/WEWA, and BOLA Architecture + Planning. Esther Hall Mumford, "Benjamin F. McAdoo, Jr.," ed. Jeffrey Karl Ochsner, *Shaping Seattle Architecture: A Historic Guide to The Architects*, 2nd edition (Seattle and London: University of Washington Press, 2014), 328-333.

University of Southern California. He married Alice Thelma Dent (1916-2013) on July 23, 1942. The couple would go on to have three children: Marcia, Benjamin (III), and Enid. Mr. McAdoo transferred to the University of Washington in 1944, graduating from the School of Architecture in 1946. After completing his degree, he began practicing in the Seattle area, primarily working on small-scale designs for churches, residences, and building renovations. His work quickly gained recognition and was frequently published in *The Seattle Times*' "AIA Home of the Month" feature. Designs featured included the William Moorhouse residence (1947, Seattle); Donald Hochberg residence (1954, Seattle); Kenneth Ota residence (1956, Seattle); George H. Hage residence (1956, Seattle); and Herbert Rivkin residence (1955, Mercer Island). His own residence in Bothell (17803 28th Avenue S, 1958), is a leading example of his residential work which integrated modernism and regionalism. **See Figures 41-70.**

In 1950, McAdoo established the "House of Merit," a single-family home of only 620 square feet with a projecting carport (**see Figure 65**). The two-bed, one-bath design had a combined living and dining room, kitchen, and utility areas. The design was adopted by builders and approximately 80 Merit houses were built north of the Central Area between 1951 and 1959.²⁰ McAdoo also designed a number of churches during his career (**see Figures 51-56**).

Both professionally and as a private citizen, McAdoo led a life of public service, fighting for racial equality. For McAdoo—according to his daughter, Enid—architecture was a way to impact the world and further human rights. "Not only did he believe in fair housing, he felt that he should participate in fair housing."²¹ His advocacy for low-cost housing solutions, which, coupled with his involvement in the Democratic Party, lead to his appointment as the Chief Housing Advisor for the United States Agency for International Development (AID) in Jamaica in 1961. While with the U.S. AID, McAdoo designed modular housing (**see Figure 61**). He then returned to the United States, continuing to work with AID as they created their Latin American Division. He continued his government service, moving to the General Services Administration's (GSA) Public Building Service. McAdoo's work while with the GSA included the John F. Kennedy Center for the Performing Arts, and the National Fisheries Center and Aquarium in Washington, D.C. He returned to the Seattle area in 1964, working in the Auburn Office of the GSA to supervise federal building design in the Northwest. Once back in the Seattle area, McAdoo persisted with his public service and advocacy work. He served as the Seattle-area president of the National Association for the Advancement of Colored People (NAACP) for four years beginning in 1964 and hosted a weekly radio broadcast on social issues in the mid-1960s. He co-founded the Central Contractors Association, an organization of Black architects, craftsmen, and builders, which, according to writer Kelsey Rose Williams, sought to "combat the disproportionate lack of Black workers in the Seattle building industry."²² McAdoo also wrote several columns in

²⁰ Kelsey Rose Williams, "Benjamin McAdoo: A Modernist Architect of Merit," *Arcade NW*, January 15, 2021, <https://arcadenw.org/journal/benjamin-mcadoo> (accessed August 29, 2023).

²¹ Jasmine Mahmoud, "Benjamin F. McAdoo Jr.," *Black Arts Legacies*, June 1, 2022, <https://blackartslegacies.crosscut.com/articles/benjamin-mcadoo> (August 31, 2023).

²² Kelsey Rose Williams, "Benjamin McAdoo: A Modernist Architect of Merit."



The Seattle Times addressing police brutality, school segregation, and housing discrimination and redlining.²³

By the late 1960s, McAdoo had returned to private architectural practice. This phase of his career was marked by larger commissions and a shift away from his early residential work. Key projects completed by McAdoo during the 1970s include the King Country Central Blood Bank (1970, Tukwila), Seattle First National Branch Bank (1970, 8405 35th Avenue NE) in the Wedgwood Neighborhood,²⁴ Ethnic Cultural Center, Seattle (1970-72, University of Washington, demolished), and Fire Station No. 29 (1972, 2139 Ferry Avenue SW). His clients during this portion of his career included the Boeing Company, Port of Seattle, Pacific Northwest Bell, Seattle City Light, King Country, Rainier Bank, First Interstate Bank, Group Health Cooperative of Puget Sound, and University of Washington. **See Figures 67-70.**

Mr. McAdoo continued to work until his death in 1981. During his nearly four-decade long career, he held licenses to practice architecture in Washington, Oregon, Montana, Alaska, and Washington, D.C. He was a member of the American Institute of Architects, the National Organization for Minority Architects, National Council of Architectural Registration Boards, and the Architectural Resources Collaborative (a minority architecture internship program at the University of Washington), and the Society of Military Engineers. In addition to those memberships, he served on the American Institute of Architects' Historic Preservation Committee, the Seattle Chamber of Commerce Board, the Seattle Environmental Review Committee, the King Country Central Blood Bank Executive Board, the Walla Walla College Board of Trustees, the Historic Seattle Public Development Agency council, and as chairman of the Central Contractors Association.

Frodesen & Associates

It is unclear who owned and operated Frodesen & Associates. However, brothers Fred and John Frodesen ran F. Frodesen Masonry Company in Seattle alongside their father, Frode, until Frode's death in 1966. Fred then became president of the company, renamed Frodesen-Henson Masonry, Inc., which he ran until his death in 1972.²⁵

4. Bibliography

Collins, Gail. "Around the Sound: Pool Dedication." *Seattle Post-Intelligencer*. November 20, 1977: C-7.

Dunham, Sandy Deneau. "Benjamin F. McAdoo's lasting legacy as an architect and activist." *The Seattle Times*. September 9, 2022.

<https://www.seattletimes.com/pacific-nw-magazine/the-lasting-legacy-of-benjamin-f-mcadoo-jr-the-first-black-architect-registered-in-washington/>.

²³ Sierra Miles, "The Benjamin McAdoo Research Collective," *Docomomo-WEWA*, <https://www.docomomo-wewa.org/news/the-benjamin-mcadoo-research-collective/> (accessed August 29, 2023).

²⁴ This design was also at two other Seattle First National Bank branches: Rainier Beach in Seattle and Lake Hills in Bellevue.

²⁵



- Historical Research Associates, Inc., Carl Williams, Heather Lee Miller. "Queen Anne Historic Context Statement Update: 1962-2012. Prepared for the Seattle Department of Neighborhoods, Historic Preservation Program, and the Queen Anne Historical Society. December 2015.
<https://www.seattle.gov/documents/Departments/Neighborhoods/HistoricPreservation/HistoricResourcesSurvey/ContextQueen%20Anne%20Historic%201963%20to%20present.pdf>. Accessed August 29, 2023.
- Houser, Michael C. "Benjamin F. McAdoo, Jr." *DocomomoWEWA*.
<https://www.docomomo-wewa.org/architect/mcadoo-benjamin-f-jr/>. Accessed August 10, 2023.
- Lentz, Florence K., and Mimi Sheridan. "Queen Anne Historic Context Statement." prepared for the Seattle Department of Neighborhoods, Historic Preservation Program, and the Queen Anne Historical Society. October 2005.
<https://www.seattle.gov/documents/Departments/Neighborhoods/HistoricPreservation/HistoricResourcesSurvey/context-queen-anne.pdf>. Accessed August 29, 2023.
- Mahmoud, Jasmine. "Benjamin F. McAdoo Jr." *Black Arts Legacies*. June 1, 2022.
<https://blackartslegacies.crosscut.com/articles/benjamin-mcadoo>. August 31, 2023.
- Miles, Sierra. "The Benjamin McAdoo Research Collective." *DocomomoWEWA*. August 19, 2021. <https://www.docomomo-wewa.org/news/the-benjamin-mcadoo-research-collective/>. Accessed August 29, 2023.
- Mullins, William H. "The Persistence of Progressivism: James Ellis and the Forward Thrust Campaign." *Pacific Northwest Quarterly*. Spring 2014.
<https://www.washington.edu/uwired/outreach/cspn/Website/Articles/Mullins/ForwardThrust.html>. Accessed August 21, 2023.
- Modie, Neil. "Bleached Bricks Pull Plug on Pool." *Seattle Post-Intelligencer*. August 30, 1978, A9.
- Mumford, Esther Hall. "Benjamin F. McAdoo, Jr." Ed. Jeffrey Karl Ochsner. *Shaping Seattle Architecture: A Historic Guide to The Architects*. 2nd edition. Seattle and London: University of Washington Press, 2014. 328-333.
- Seattle Post-Intelligencer*.
- . "McClure Site Favored for Queen Anne Pool." October 3, 1978: A8.
- . "City to Take Plunge on Queen Anne Pool." May 31, 1973: C15.
- . "Too Hot to Swim." November 9, 1977: A-4.
- The Seattle Times*.
- . "Architect for Swimming Pool Selected." November 12, 1974: B2.
- . "Firm Makes Low Bid on Last Pool." May 16, 1976: G6.
- . "Work on New Pool to Begin Next Spring." November 16, 1975: B2.

Willamette Cultural Resources, Penelope Cottrell-Crawford and Tom Heuser. "McAdoo House." Bothell Register of Historic Landmarks Nomination. August 2023. <https://www.bothellwa.gov/AgendaCenter/ViewFile/Agenda/09262023-997>. Accessed November 1, 2023.

Williams, Kelsey Rose. "Benjamin McAdoo: A Modernist Architect of Merit." *Arcade NW*. January 15, 2021. <https://arcadenw.org/journal/benjamin-mcadoo>. Accessed August 29, 2023.

Thrush, Coll, Nile Thompson, Amir Sheikh. "An Atlas of Indigenous Seattle." In *Native Seattle: Histories from the Crossing-Over Place*. Seattle and London: University of Washington Press, 2007. e-book.

Your Seattle Parks and Recreation. "Forward Thrust at the Halfway Mark." Progress report to Seattle City Council. 1975. Available via Seattle Municipal Archives.

Varney, Val. "Forward Thrust Parks are on Schedule." *The Seattle Times*. December 20, 1970: 7.

---. "High Costs, Lack of Space Delaying Pool." *The Seattle Times*. July 30, 1972: B2.

---. "Queen Anne Pool Study Distributed." *The Seattle Times*. April 11, 1973: B7.

5. Figure List

CONTENTS

SITE PLAN AND AERIAL VIEWS A.1

Figure 1. Vicinity map. A.1

Figure 2. Nominated property map. A.2

Figure 3. Site Plan. A.3

Figure 4. 1977 USGS aerial. A.4

Figure 5. Site Photograph Key. A.5

PHOTOGRAPHS A.6

Figure 6. Exterior, front west facade. A.6

Figure 7. Exterior, front west entrance. A.6

Figure 8. Exterior, south facade. A.7

Figure 9. Exterior, northeast corner looking southwest along the alley. A.7

Figure 10. Exterior, north facade. A.8

Figure 11. Exterior, north facade, looking west along the staff walkway. A.8

Figure 12. Entrance, main public west entrance. A.9

Figure 13. Entrance, main public west entrance looking north. A.9

Figure 14. Circulation, west sidewalk looking south. A.10

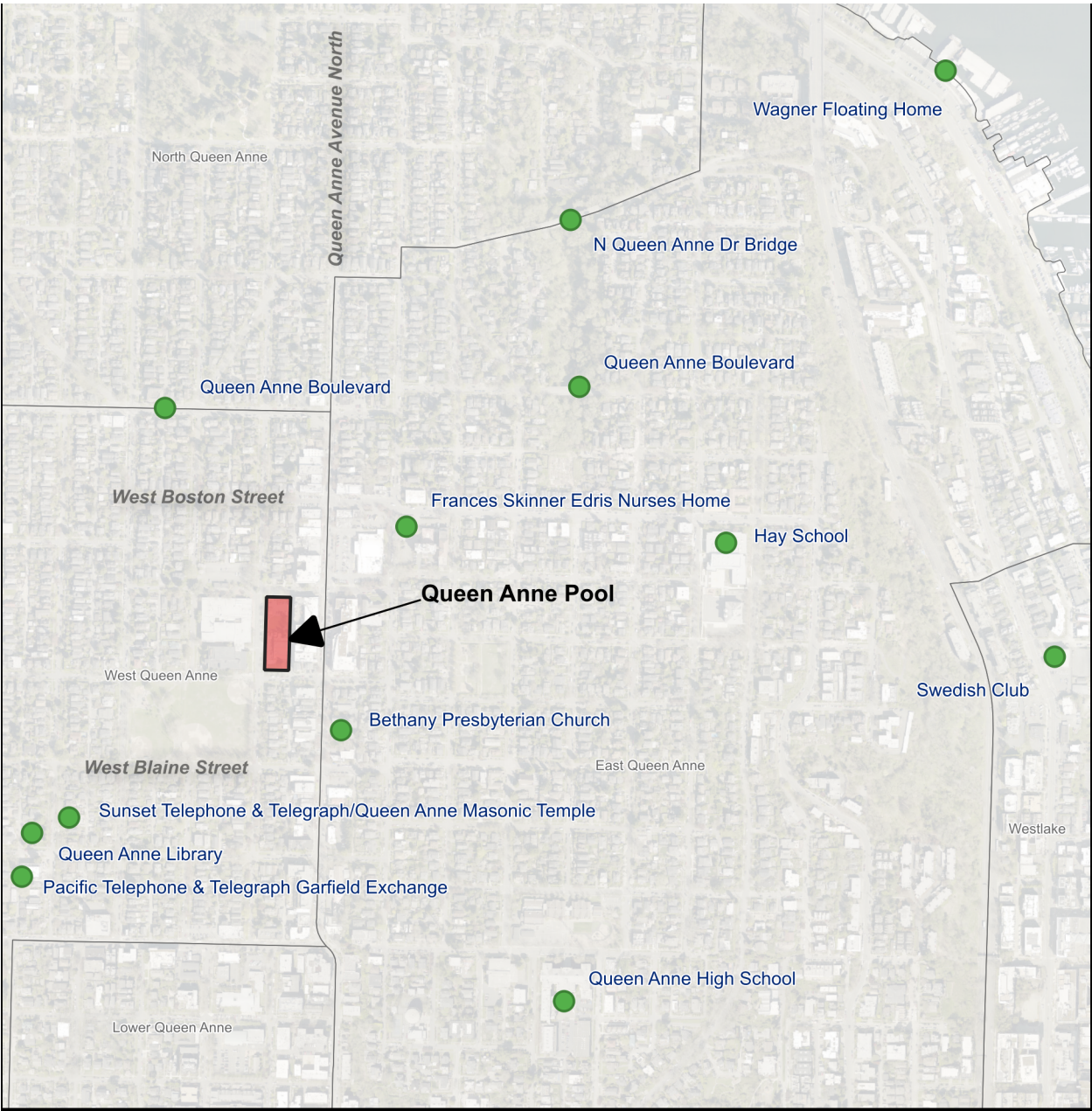


Figure 15. Circulation, walkway from the parking lot looking northeast.	A.10
Figure 16. Site, looking east along West Crockett Street from 1st Avenue West.	A.11
Figure 17. Site, looking south along 1st Avenue West.	A.11
Figure 18. Site, looking east towards the site directly north of the building.	A.12
Figure 19. Site, looking north along 1st Avenue West.	A.12
Figure 20. Site, looking northeast from the intersection of 1st Avenue West and West Howe Street.	A.13
Figure 21. Site, looking south along 1st Avenue West.	A.13
Figure 22. Site, looking east along West Howe Street.	A.14
Figure 23. Site, looking northeast at the berm south of the building.	A.14
Figure 24. Site, looking at the planting area at the south side of the front portion of the building.	A.15
Figure 25. Site, looking east along West Howe Street showing the relative height of the berm.	A.15
Figure 26. Site, south portion, looking west towards 1st Avenue West.	A.16
Figure 27. Site, retaining wall at the southeast corner.	A.16
Figure 28. Site, alley looking north.	A.17
Figure 29. Site, looking south along the alley.	A.17
Figure 30. Site, looking at the planting area off the northeast corner of the building.	A.18
Figure 31. Site, alley, looking north towards West Crockett Street.	A.18
Figure 32. Site, parking area, looking west.	A.19
Figure 33. Site, looking southwest at the berm on the north side of the parking area.	A.19
Figure 34. Site, looking north along 1st Avenue West showing the grade difference between the sidewalk and parking area.	A.20
Figure 35. Site, looking south along 1st Avenue West.	A.20
Figure 36. Pool, looking east. 2023 view from Google, courtesy of Laura Musikanski, photographer.	A.21
Figure 37. Pool, looking northeast. 2015 view from Google.	A.21
Figure 38. Pool, looking east. 2018 view from Google.	A.22
Figure 39. Cove Addition Plat.	A.23
Figure 40. Queen Anne Pool, ca. 1980s.	A.24
Figure 41. Benjamin F. McAdoo, Jr., architectural license photo.	A.25
Figure 42. Benjamin F. McAdoo, Jr., undated.	A.25
Figure 43. 1981, Benjamin McAdoo in his living room.	A.26
Figure 44. 1981, Benjamin McAdoo in his office.	A.26

Figure 45. 1981, view of Benjamin McAdoo's mixed-use house and office, 1981, at 1718 E Olive Way on Capitol Hill.	A.27
Figure 46. McAdoo Architectural Office building, undated, at 1718 E Olive Way on Capitol Hill.	A.27
Figure 47. Rendering for additions to existing office & apartment, 1718 E Olive Way on Capitol Hill.	A.28
Figure 48. 1718 E Olive Way on Capitol Hill, November 2022.	A.28
Figure 49. McAdoo House, Bothell, c. 1958. Front View.	A.29
Figure 50. McAdoo House, Bothell, c. 1958. Rear view.	A.29
Figure 51. Rendering for the First Baptist Church, Bothell, undated.	A.30
Figure 52. Rendering of the Cedar Creek S.D. A. Church, Cedar Creek, undated.	A.30
Figure 53. Rendering of the Calvary Baptist Church, Renton, undated.	A.31
Figure 54. Rendering of the Tabernacle Seventh-Day Adventist Church, Portland, undated.	A.31
Figure 55. Rendering for the Portland Union Academy for the Oregon Conference of Seventh-Day Adventists, Portland, undated.	A.32
Figure 56. Perspective study for the proposed Sacramento Seventh-Day Adventist Church, Sacramento, 1961.	A.32
Figure 57. Rendering for the Marshal Paris Office Building, location unknown, undated.	A.33
Figure 58. Rendering for a multi-purpose recreation building for the Makah Air Force Station, Neah Bay, undated.	A.33
Figure 59. Rendering for a residence for Mr. and Mrs. David Whitlow, Bellevue.	A.34
Figure 60. Rendering for a residence for Mr. and Mrs. William Moorhouse, location unknown, 1949.	A.34
Figure 61. Examples of McAdoo's work in Jamaica.	A.35
Figure 62. Rendering for a gymnasium and music building for Columbia Academy, Battle Ground, undated.	A.35
Figure 63. Rendering for an apartment building for Liep and Keong Go, at 12th Avenue S and Massachusetts Street (built 1960).	A.36
Figure 64. Ben-Mar Apartments, 315 23rd Avenue E, Capitol Hill (built 1950).	A.36
Figure 65. Drawing of "House of Merit."	A.37
Figure 66. Ota Residence, 1955, located in Rainier Beach.	A.37

Figure 67. Fire Station 39, 2319 Ferry Avenue, West Seattle.	A.38
Figure 68. Seattle First National bank (now Bank of America branch), 8405 35th Ave NE in Seattle's Wedgwood neighborhood, built in 1970.	A.38
Figure 69. King County Blood Bank, Tukwila, 1970.	A.39
Figure 70. Ethnic Cultural Center, Seattle, 1972. This building has been demolished.	A.39
Figure 71. Medgar Evers Pool, Exterior, 1970.	A.40
Figure 72. Medgar Evers Pool, Interior, 1970.	A.40
Figure 73. Meadowbrook Pool, 1970.	A.41
Figure 74. Southwest Pool, 2023.	A.41
Figure 75. Existing Topography Plan, 1976.	A.42
Figure 76. Site Plan, 1976.	A.43
Figure 77. Floor Plan, 1976.	A.44
Figure 78. Roof Plan, 1976.	A.45
Figure 79. Building Elevations, 1976.	A.46
Figure 80. Building Sections, 1976.	A.47
Figure 81. Building Sections, 1976.	A.48
Figure 82. Building Sections, 1976.	A.49
Figure 83. Planting Plan, 1976.	A.50
Figure 84. Landscape Revisions Plan, 1980.	A.51
Figure 85. Roof Plan, 1990.	A.50
Figure 86. "Glu-Lam" Beam Emergency Replacement/Repair plan, 1997.	A.51
Figure 87. "Glu-Lam" Beam Emergency Replacement/Repair plan, 1997.	A.52

SITE PLAN AND AERIAL VIEWS






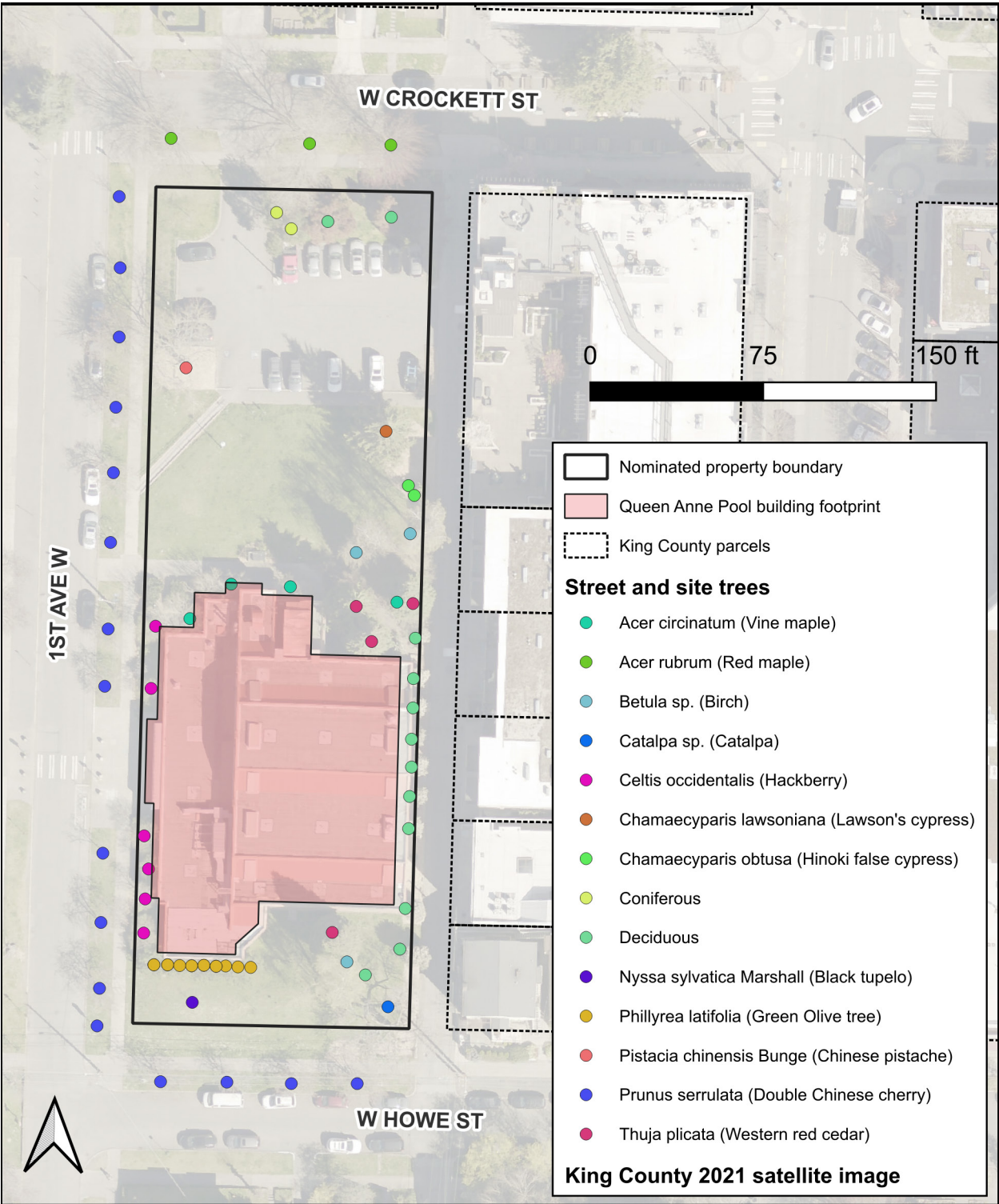
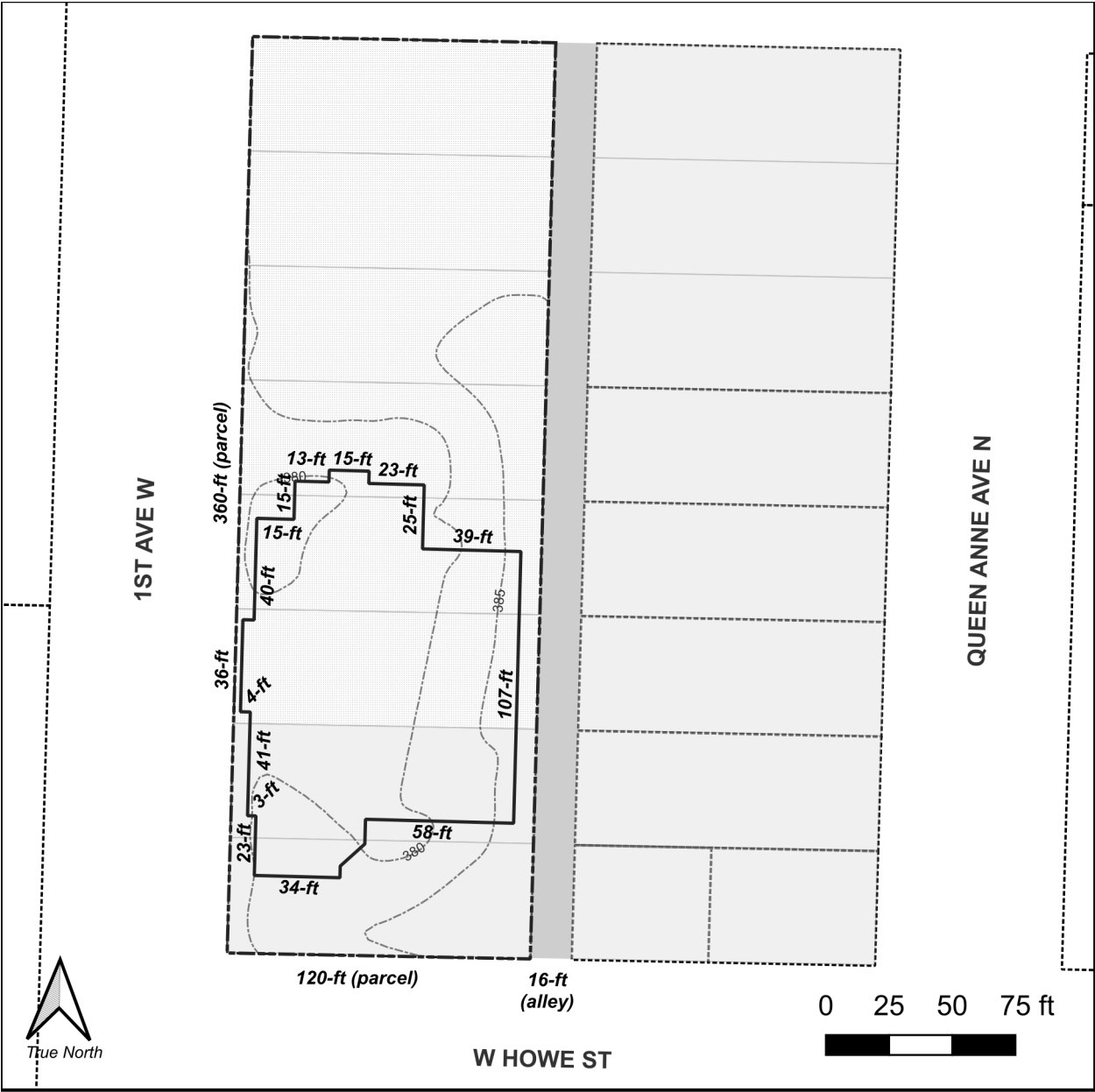
-  Nominated property boundary
-  City of Seattle Landmarks
-  City Clerk Neighborhoods

Figure 1. Vicinity map.
Shows the Queen Anne Pool and current Seattle Landmarks.







- | | |
|--|--|
| Nominated property boundary | Nominated property legal subdivisions |
| Queen Anne Pool building footprint | Lot |
| King County parcels | Agency Property |
| King County topography contours (feet) | ROW (Alley) |

Figure 3. Site Plan.
This map shows the nominated buildings and nomination boundary.



Figure 4. 1977 USGS aerial.

This map shows the nominated building the year construction was completed.

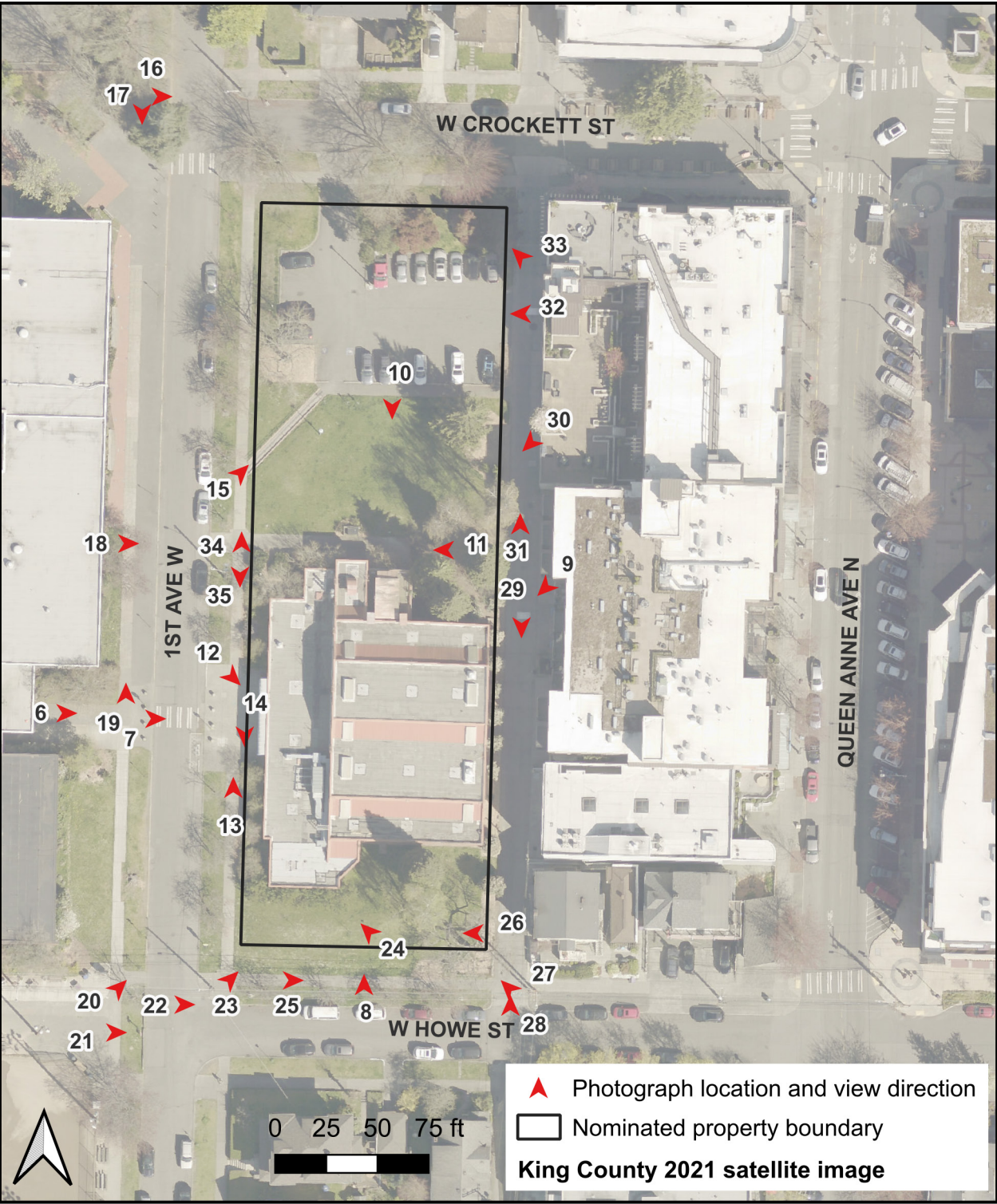


Figure 5. Site Photograph Key.
This map shows photograph locations and view direction.

PHOTOGRAPHS



Figure 6. Exterior, front west facade.



Figure 7. Exterior, front west entrance.



Figure 8. Exterior, south facade.



Figure 9. Exterior, northeast corner looking southwest along the alley.



Figure 10. Exterior, north facade.



Figure 11. Exterior, north facade, looking west along the staff walkway.



Figure 12. Entrance, main public west entrance.



Figure 13. Entrance, main public west entrance looking north.



Figure 14. Circulation, west sidewalk looking south.



Figure 15. Circulation, walkway from the parking lot looking northeast.



Figure 16. Site, looking east along West Crockett Street from 1st Avenue West.



Figure 17. Site, looking south along 1st Avenue West.



Figure 18. Site, looking east towards the site directly north of the building.



Figure 19. Site, looking north along 1st Avenue West.



Figure 20. Site, looking northeast from the intersection of 1st Avenue West and West Howe Street.



Figure 21. Site, looking south along 1st Avenue West.



Figure 22. Site, looking east along West Howe Street.



Figure 23. Site, looking northeast at the berm south of the building.



Figure 24. Site, looking at the planting area at the south side of the front portion of the building.



Figure 25. Site, looking east along West Howe Street showing the relative height of the berm.



Figure 26. Site, south portion, looking west towards 1st Avenue West.



Figure 27. Site, retaining wall at the southeast corner.



Figure 28. Site, alley looking north.



Figure 29. Site, looking south along the alley.



Figure 30. Site, looking at the planting area off the northeast corner of the building.



Figure 31. Site, alley, looking north towards West Crockett Street.



Figure 32. Site, parking area, looking west.



Figure 33. Site, looking southwest at the berm on the north side of the parking area.



Figure 34. Site, looking north along 1st Avenue West showing the grade difference between the sidewalk and parking area.



Figure 35. Site, looking south along 1st Avenue West.



Figure 36. Pool, looking east. 2023 view from Google, courtesy of Laura Musikanski, photographer.



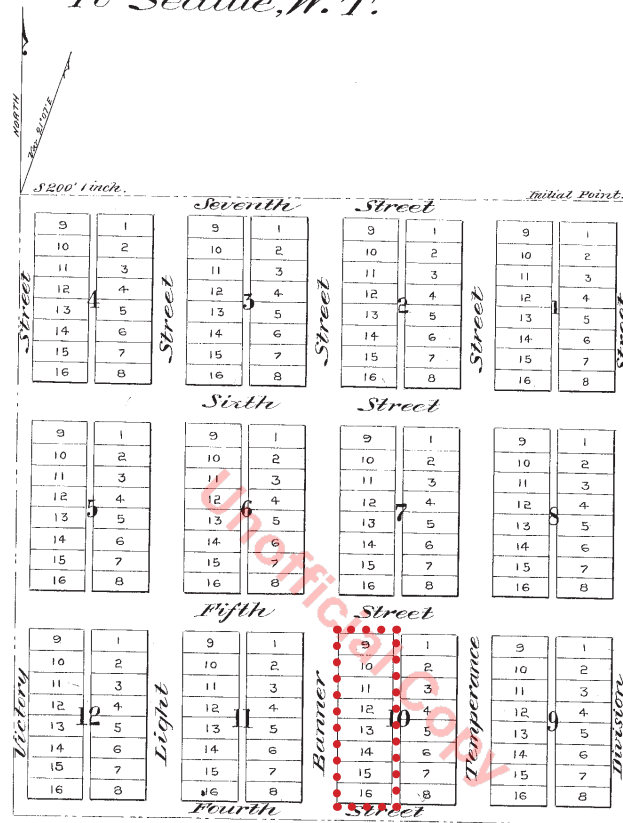
Figure 37. Pool, looking northeast. 2015 view from Google.



Figure 38. Pool, looking east. 2018 view from Google.

Noah Fleckinger Town Plat Cove Addition

To Seattle, W.T.



N. E. 1/4 of the S. E. 1/4 of Section 24 Township 25 N. Range 3 East Willamette Meridian. Lots 45 X 120 ft. Streets N & S 74 ft. E & W 80 ft. Alleys 16 ft. wide.

Territory of Washington }
County of King }

On this 12th day of September A.D. 1871, before me a Notary Public in and for Washington Territory, personally appeared the proprietor of Cove Addition to Seattle, Noah Fleckinger to me known to be the same person who executed this plat and acknowledged that he executed the same for the purposes of a Town Plat, and that he donates the Streets and alleys thereon marked for the uses of the Public.

In witness whereof I have hereunto set my hand and seal the day and year above written.

H. Mackintosh, Notary Public.

Filed for Record and Recorded Sept. 12, 1871.

Gardner Kellogg Auditor.
by A. Mackintosh, Deputy.

Recorded in the Records of King County, Washington Territory in Vol. 5 of Deeds on pages 319. Re-recorded or transferred (per order Coms) this Feb'y 23rd 1875.
S. C. Harris Draughtsman.

Figure 39. Cove Addition Plat.

The west half of block 10 containing the Queen Anne Pool is outlined with red dots.



Figure 40. Queen Anne Pool, ca. 1980s.
Courtesy of King County, Department of Assessments.



Figure 41. Benjamin F. McAdoo, Jr., architectural license photo.
Courtesy WA State Department of Architectural Licensing.



Figure 42. Benjamin F. McAdoo, Jr., undated.
Courtesy Seattle Public Library.

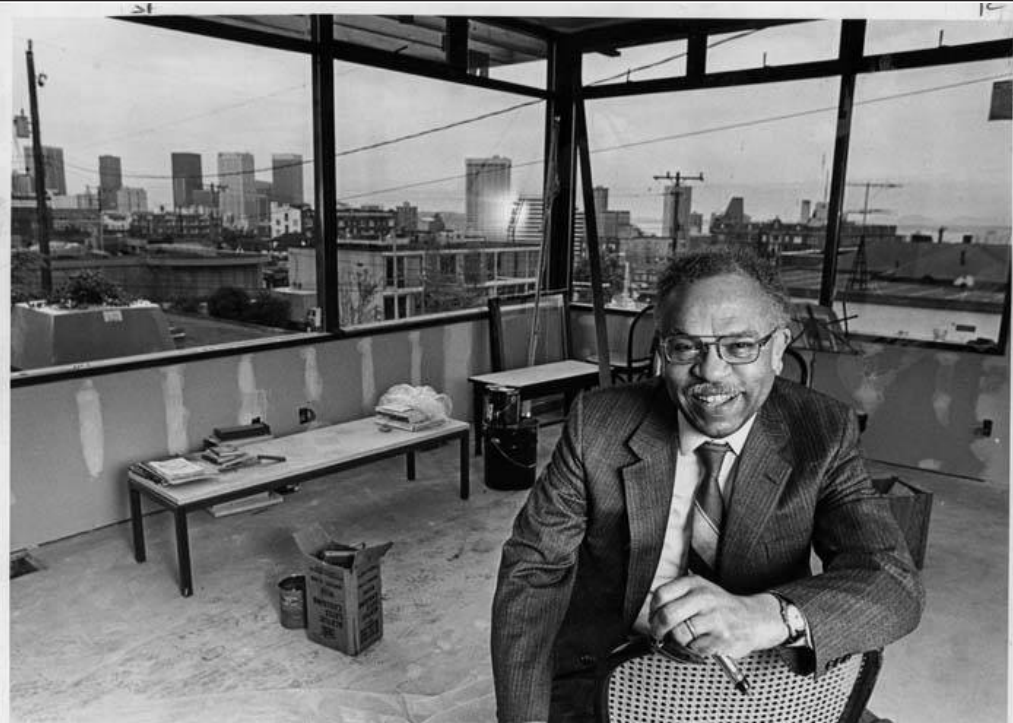


Figure 43. Benjamin McAdoo in his living room, 1981.

McAdoo's residence was located above his office at 1718 E Olive Way on Capitol Hill. Courtesy University of Washington, Museum of History & Industry Collection, image 2000.107.120.27.02, photographer Tom Barlet, Seattle Post-Intelligencer.



Figure 44. Benjamin McAdoo in his office, 1981.

McAdoo's office was at 1718 E Olive Way on Capitol Hill. Courtesy University of Washington, Museum of History & Industry Collection, image 2000.107.120.27.01, photographer Tom Barlet, Seattle Post-Intelligencer.



Figure 45. View of Benjamin McDoo's mixed use house and office, 1981, at 1718 E Olive Way on Capitol Hill.

Courtesy University of Washington, Museum of History & Industry Collection, image 2000.107.120.27.03, photographer Tom Barlet, Seattle Post-Intelligencer.



Figure 46. McDoo Architectural Office building, undated, at 1718 E Olive Way on Capitol Hill. Courtesy Seattle Public Library.

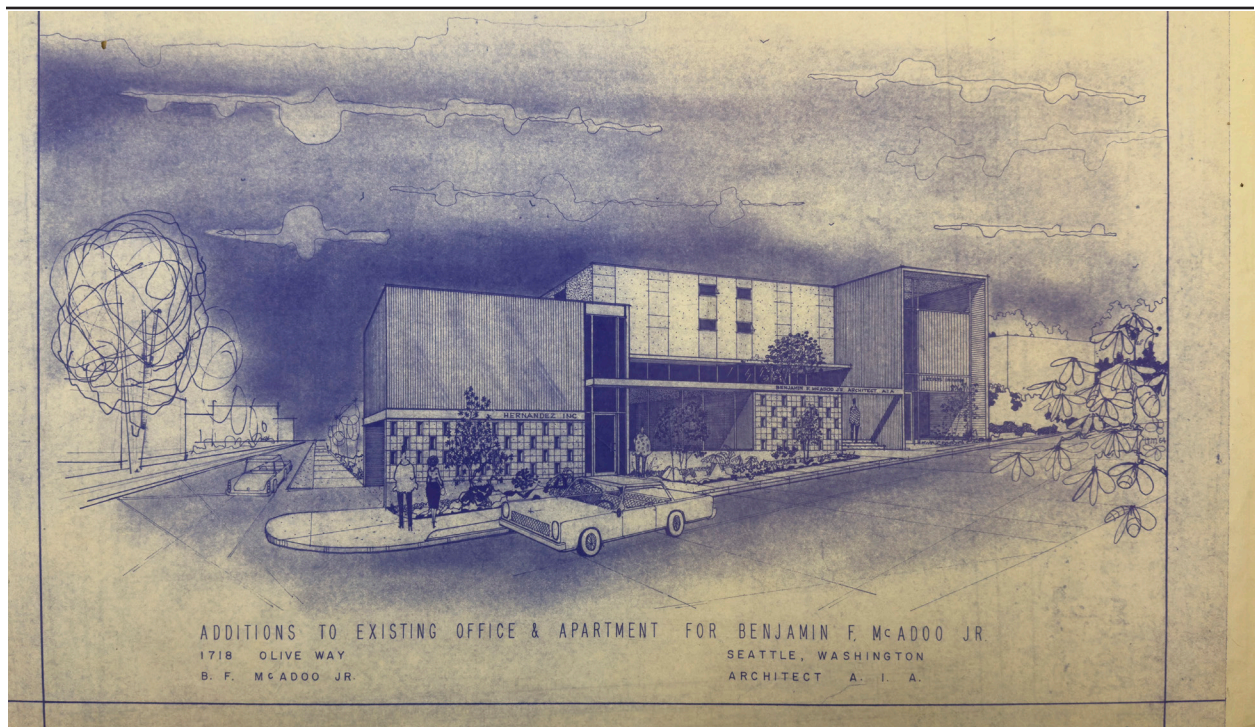


Figure 47. Rendering for additions to existing office & apartment, 1718 E Olive Way on Capitol Hill, undated.

Courtesy UW Special Collections, Benjamin McAdoo Papers, 1232-002, Box 8.



Figure 48. 1718 E Olive Way on Capitol Hill, November 2022.

Courtesy Google Street View.



Figure 49. McAdoo House, Bothell, 1958. Front view.

McAdoo designed his own residence. Courtesy of King County, Department of Assessments.

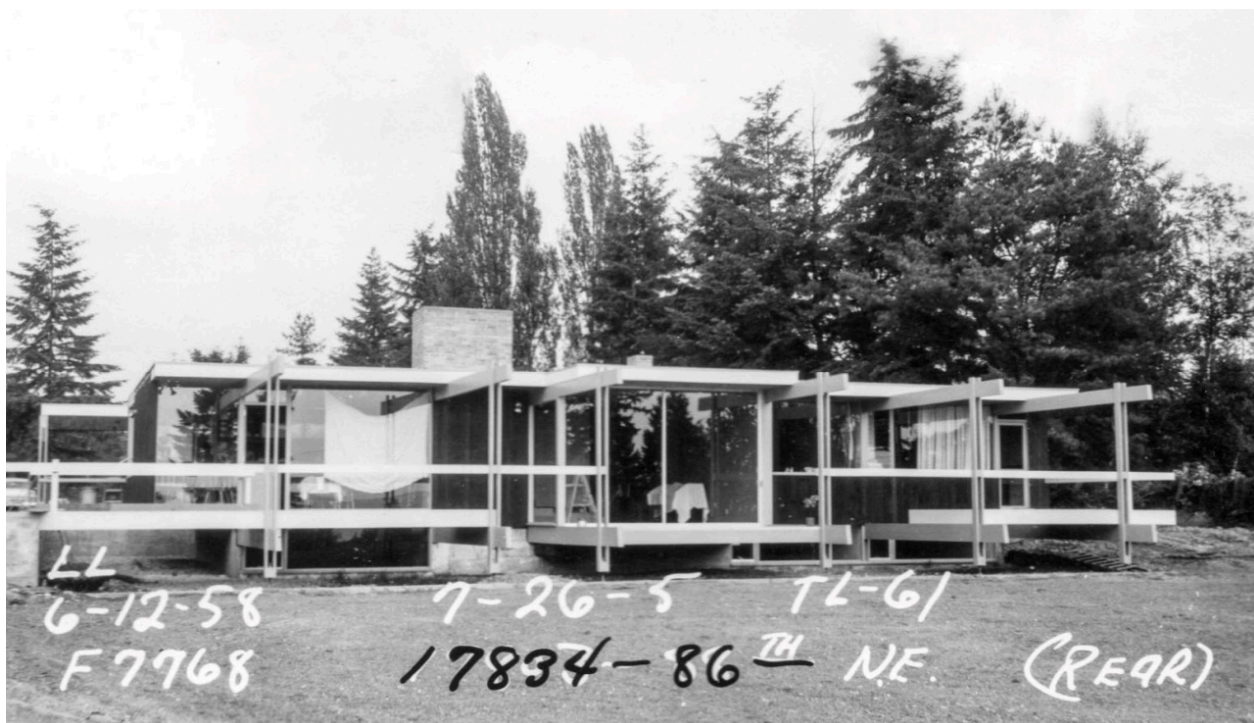


Figure 50. McAdoo House, Bothell, c. 1958. Rear view.

McAdoo designed his own residence. Courtesy of King County, Department of Assessments.

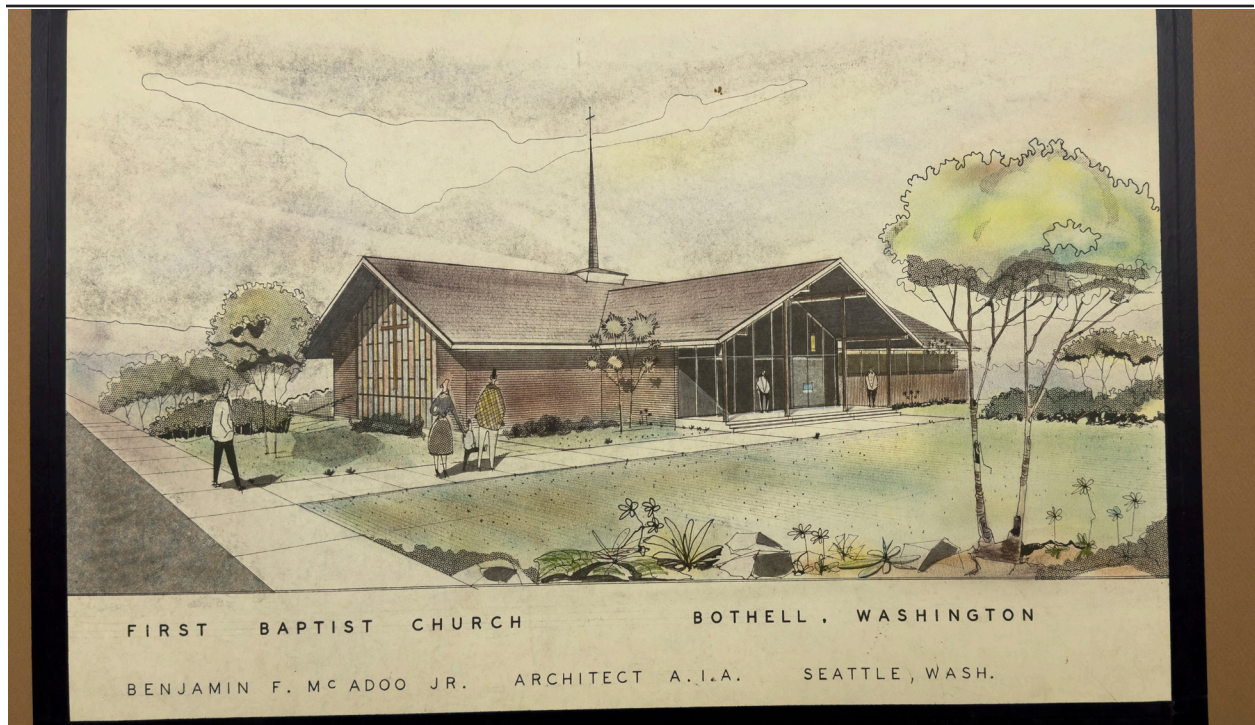


Figure 51. Rendering for the First Baptist Church, Bothell, undated.

Courtesy UW Special Collections, Benjamin McAdoo Papers, 1232-002, Box 8.



Figure 52. Rendering of the Cedar Creek S.D. A. Church, Cedar Creek, undated.

Courtesy UW Special Collections, Benjamin McAdoo Papers, 1232-002, Box 8.

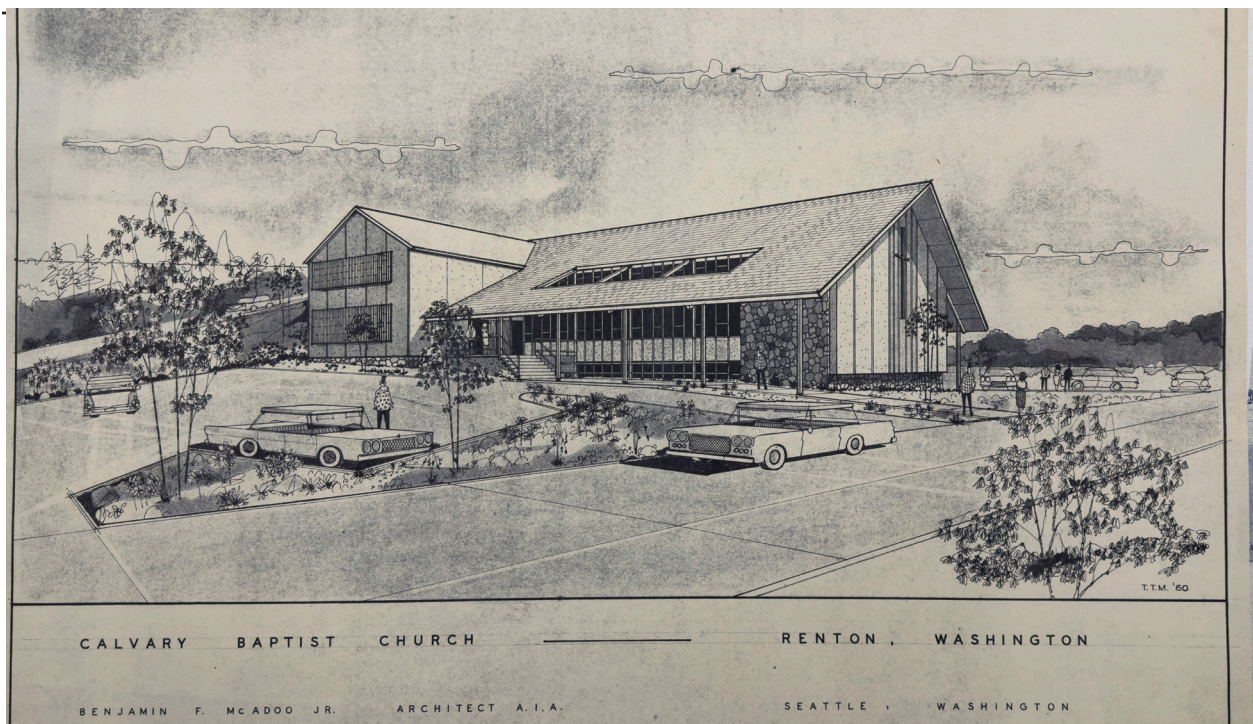


Figure 53. Rendering of the Calvary Baptist Church, Renton, undated.

Courtesy UW Special Collections, Benjamin McAdoo Papers, 1232-002, Box 8.

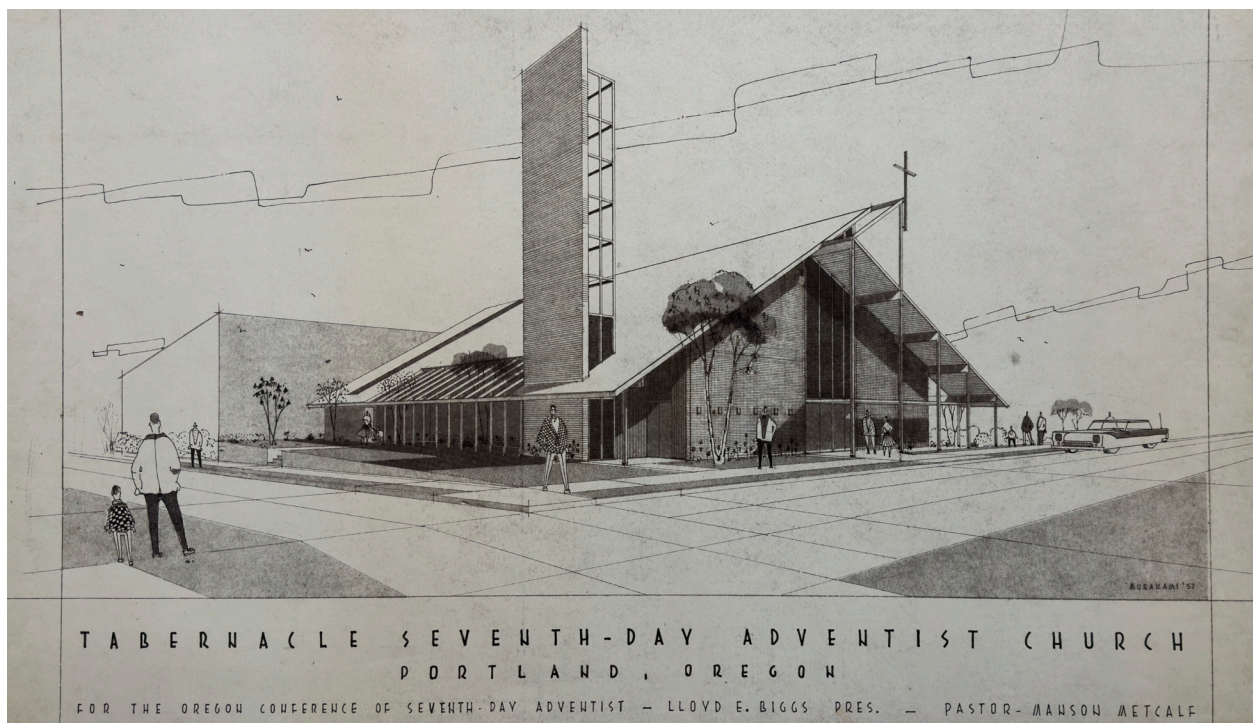


Figure 54. Rendering of the Tabernacle Seventh-Day Adventist Church, Portland, undated.

Courtesy UW Special Collections, Benjamin McAdoo Papers, 1232-002, Box 8.

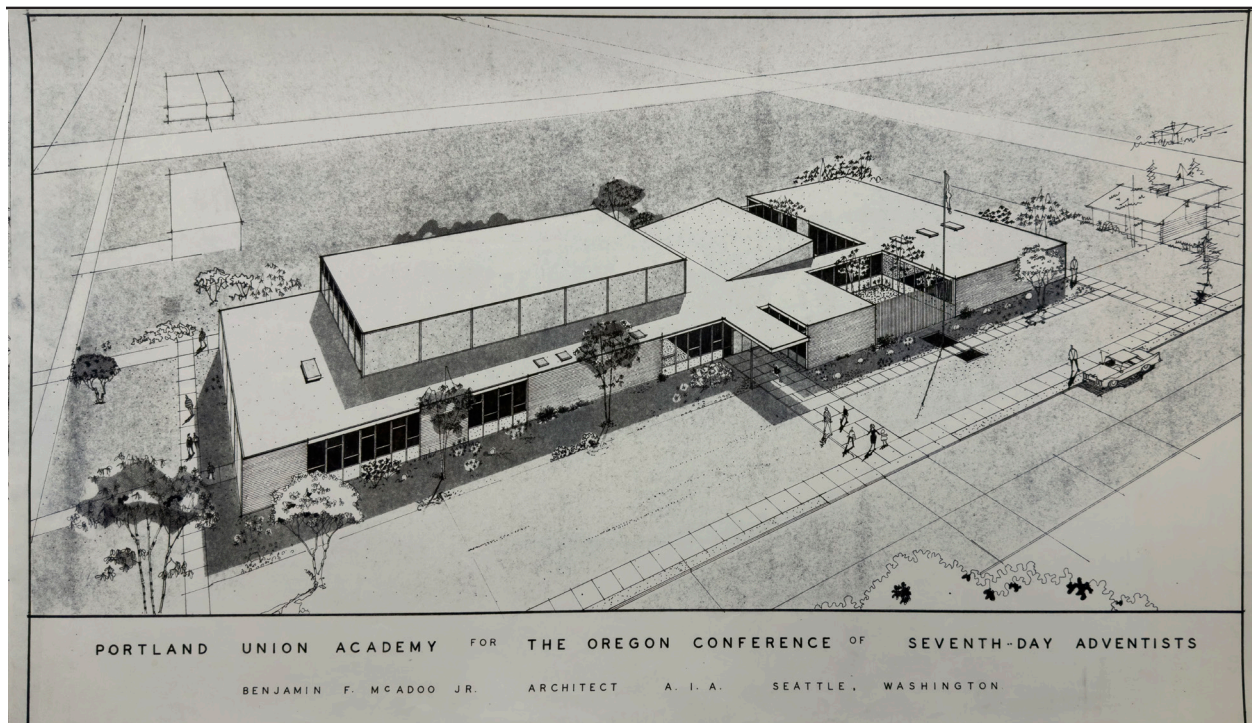


Figure 55. Rendering for the Portland Union Academy for the Oregon Conference of Seventh-Day Adventists, Portland, undated.

Courtesy UW Special Collections, Benjamin McAdoo Papers, 1232-002, Box 8.

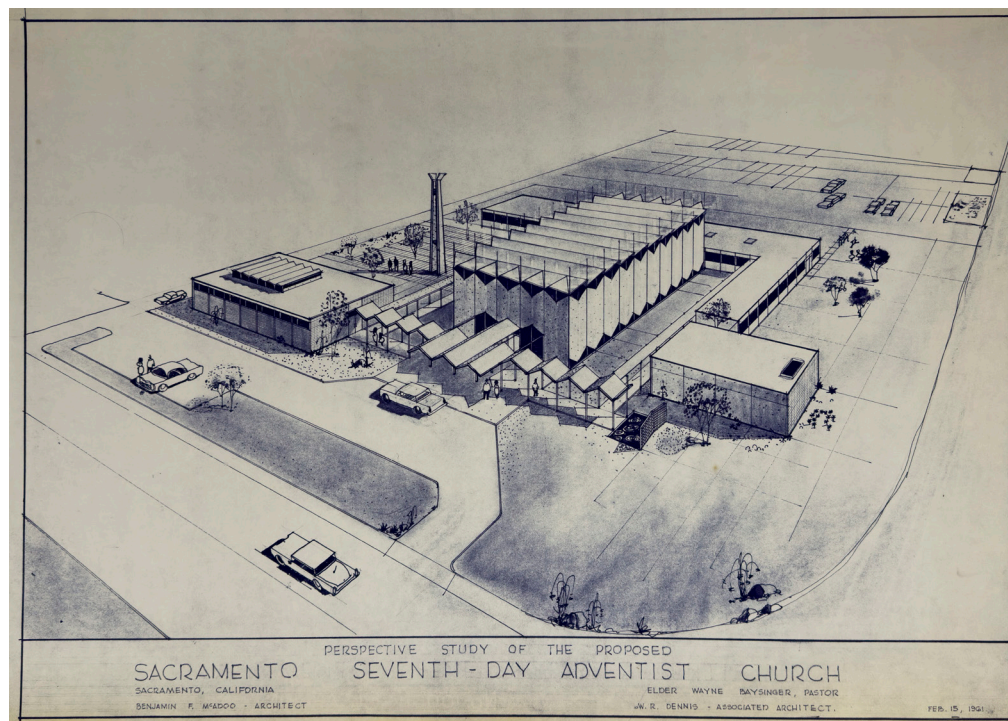


Figure 56. Perspective study for the proposed Sacramento Seventh-Day Adventist Church, Sacramento, 1961.

Courtesy UW Special Collections, Benjamin McAdoo Papers, 1232-002, Box 8.



Figure 57. Rendering for the Marshal Paris Office Building, location unknown, undated.
Courtesy UW Special Collections, Benjamin McAdoo Papers, 1232-002, Box 8.

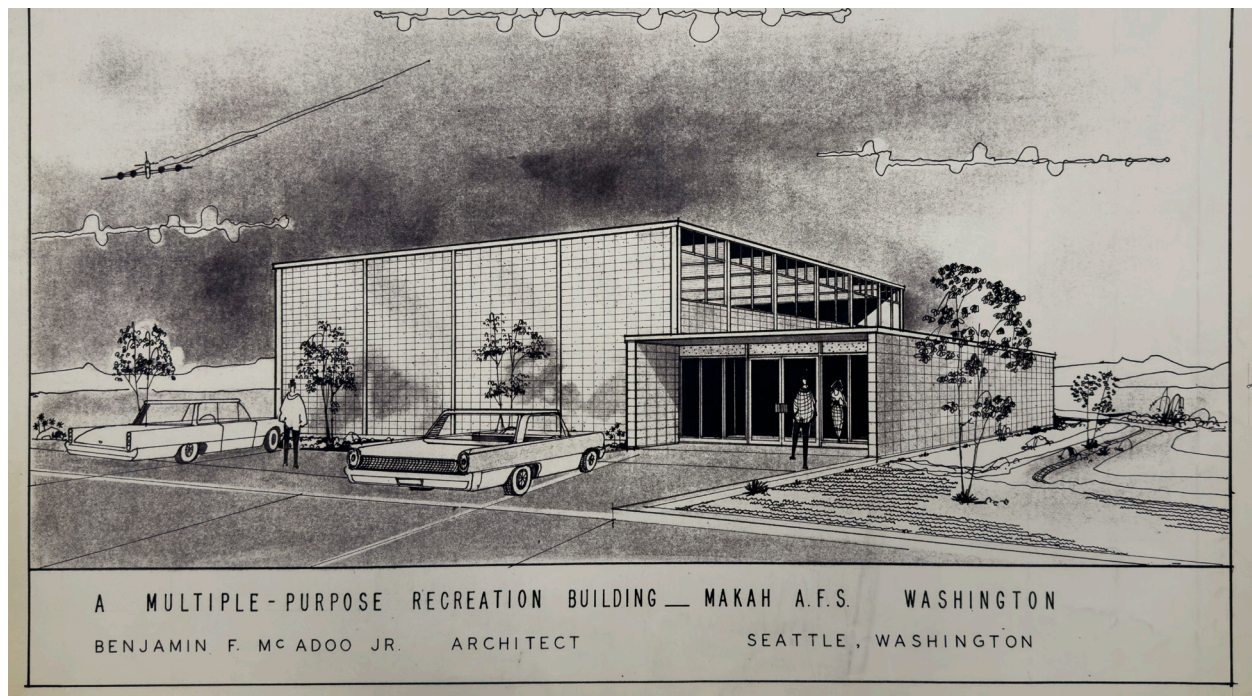


Figure 58. Rendering for a multi-purpose recreation building for the Makah Air Force Station, Neah Bay, undated.

Courtesy UW Special Collections, Benjamin McAdoo Papers, 1232-002, Box 8.



Figure 59. Rendering for a residence for Mr. and Mrs. David Whitlow, Bellevue.
Courtesy UW Special Collections, Benjamin McAdoo Papers, 1232-002, Box 8.



Figure 60. Rendering for a residence for Mr. and Mrs. William Moorhouse, location unknown, 1949.
Courtesy UW Special Collections, Benjamin McAdoo Papers, 1232-002, Box 8.

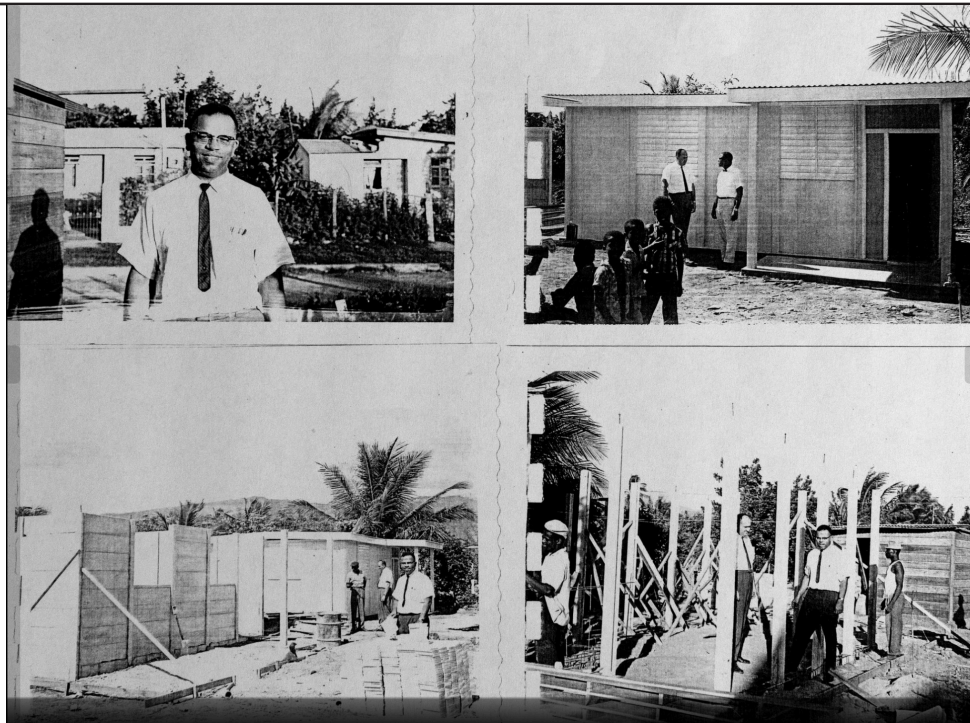


Figure 61. Examples of McAdoo's work in Jamaica.
Courtesy Enid McAdoo via Seattle Times (September 9, 2022).



Figure 62. Rendering for a gymnasium and music building for Columbia Academy, Battle Ground, undated.

Courtesy UW Special Collections, Benjamin McAdoo Papers, 1232-002, Box 8.



Figure 63. Rendering for an apartment building for Liep and Keong Go, at 12th Avenue S and Massachusetts Street (built 1960).

Courtesy UW Special Collections, Benjamin McAdoo Papers, 1232-002, Box 8.



Figure 64. Ben-Mar Apartments, 315 23rd Avenue E, Capitol Hill (built 1950).

Courtesy of King County Assessor.

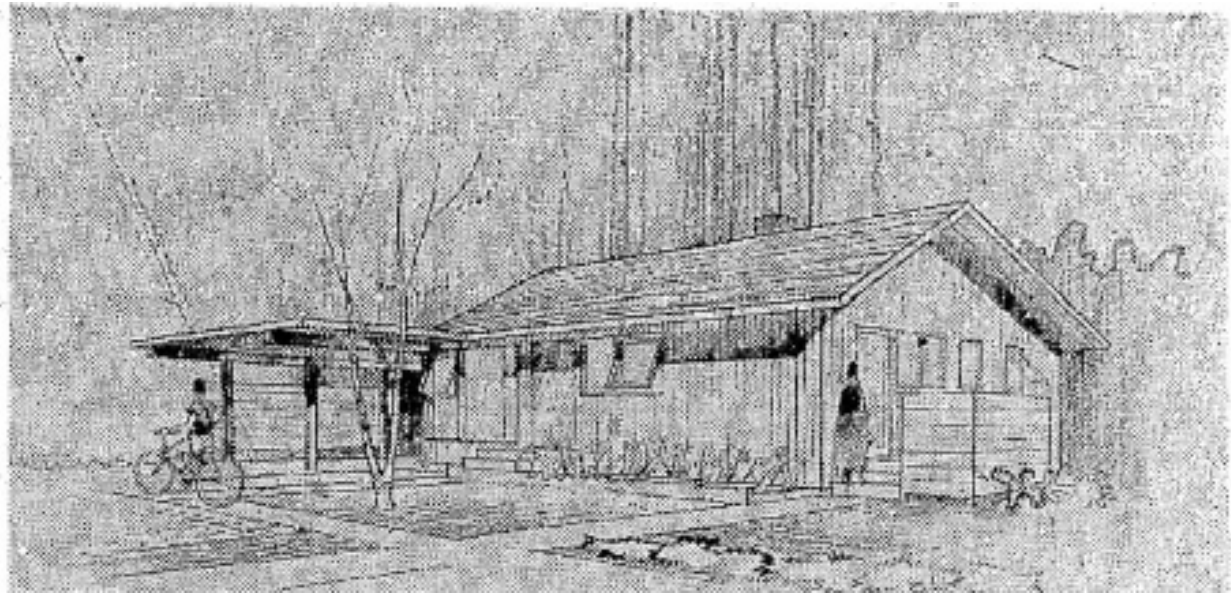


Figure 65. Drawing of “House of Merit.”

An example “House of Merit” was built at 1810 28th Avenue.



Figure 66. Ota Residence, 1955, located in Rainier Beach.

Courtesy Sierra Miles, DocomomoWEWA.



Figure 67. Fire Station 29, 2319 Ferry Avenue, West Seattle.
Courtesy of King County Assessor.



Figure 68. Seattle First National bank (now Bank of America branch), 8405 35th Ave NE in Seattle's Wedgwood neighborhood, built in 1970.
Courtesy of King County Assessor.

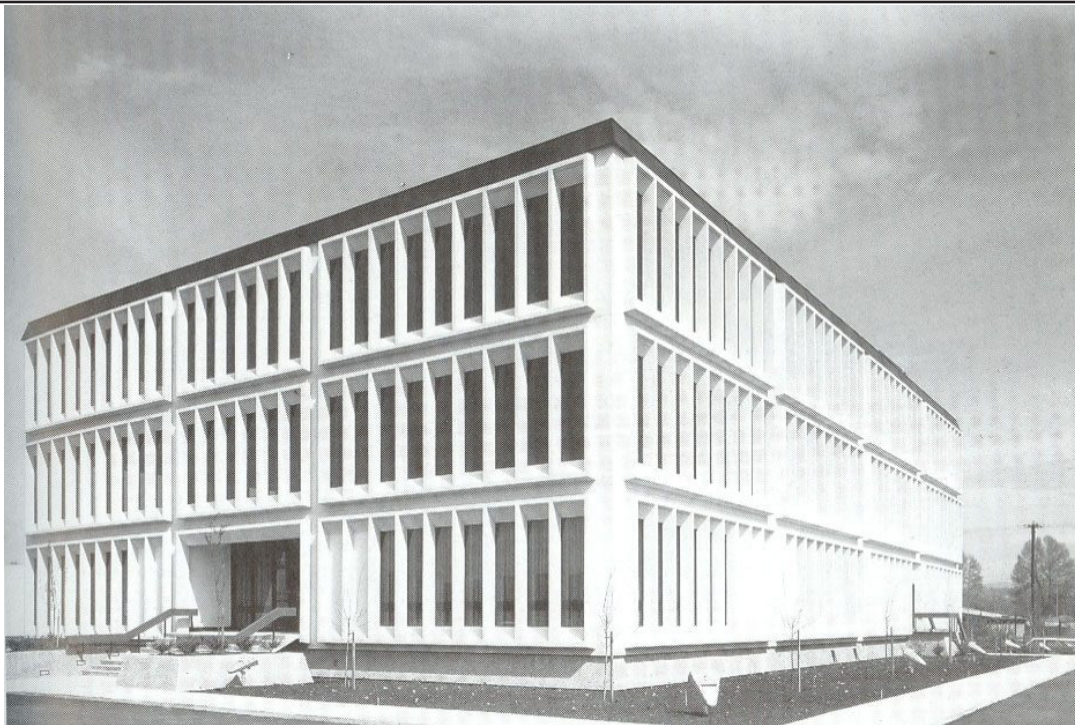


Figure 69. King County Blood Bank, Tukwila, 1970.

Courtesy University of Washington via DocomomoWEWA.



Figure 70. Ethnic Cultural Center, Seattle, 1972. This building has been demolished.

University of Washington, demolished. Courtesy University of Washington.



Figure 71. Medgar Evars Pool, Exterior, 1970.

Courtesy of Seattle Municipal Archives.



Figure 72. Medgar Evars Pool, Interior, 1970.

Courtesy of Seattle Municipal Archives.



Figure 73. Meadowbrook Pool, 1970.

Courtesy of Seattle Municipal Archives.



Figure 74. Southwest Pool, 2023.

Courtesy of Northwest Vernacular.

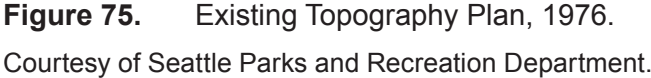


Figure 75. Existing Topography Plan, 1976.
Courtesy of Seattle Parks and Recreation Department.

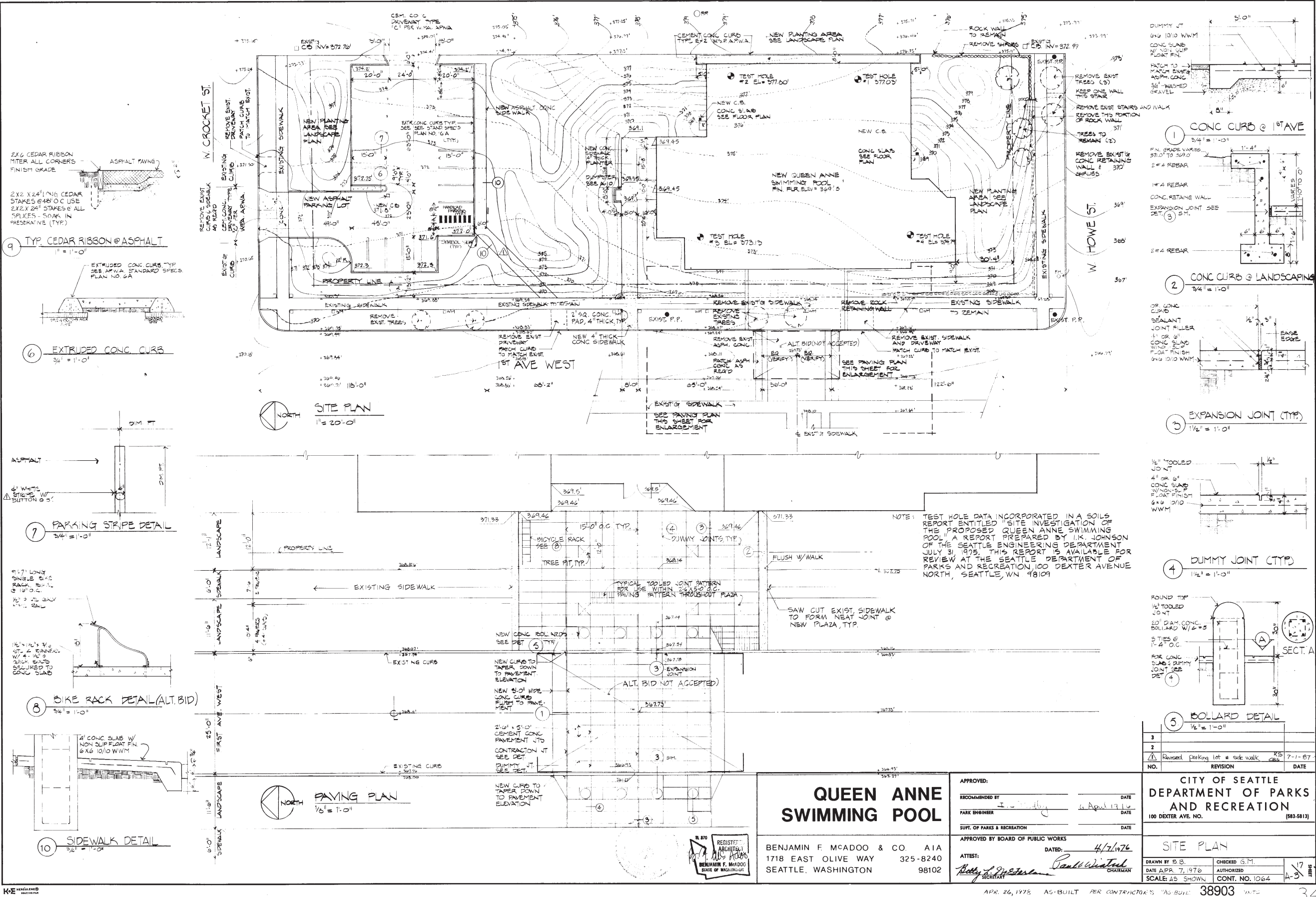
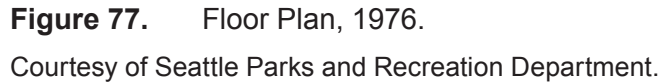


Figure 76. Site Plan, 1976.
Courtesy of Seattle Parks and Recreation Department.



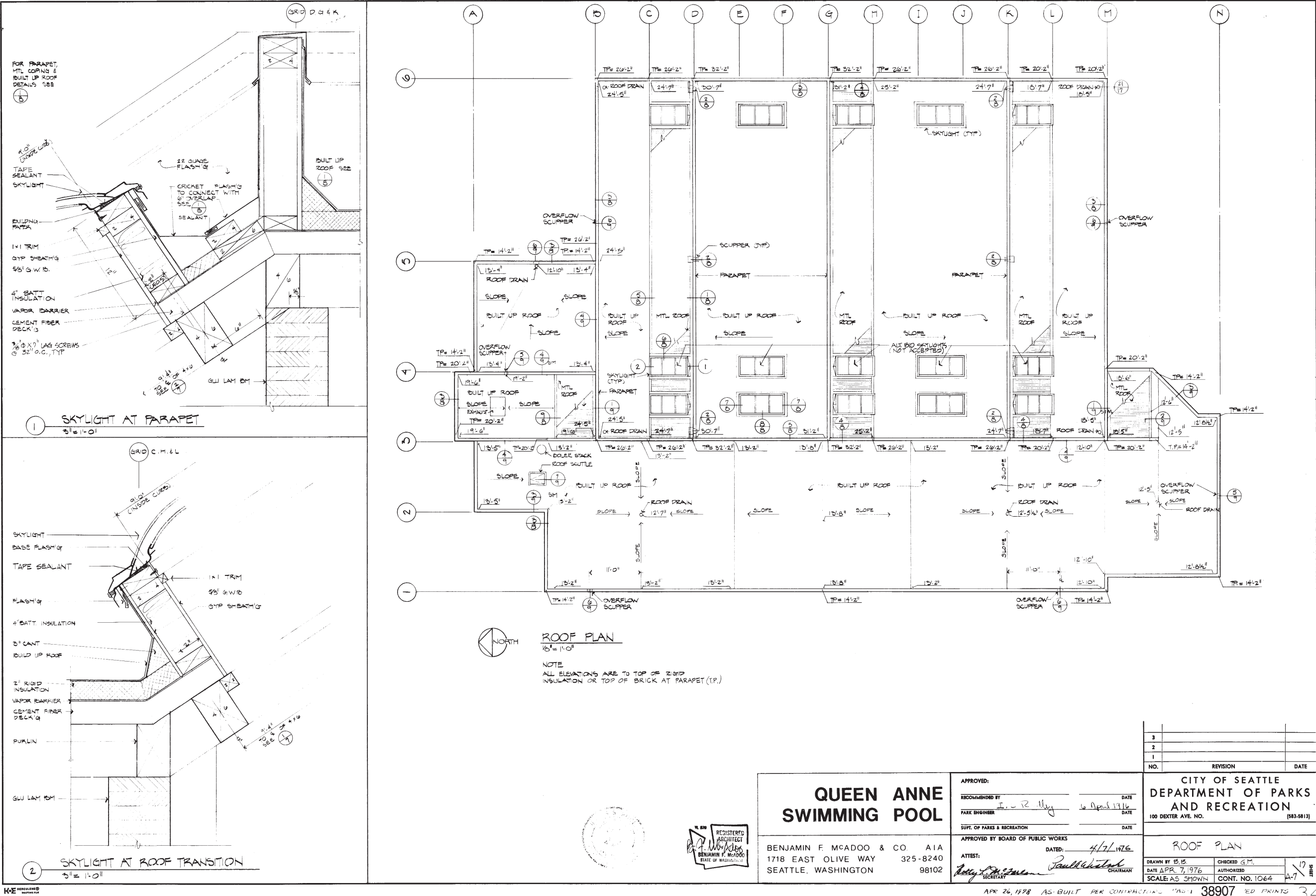
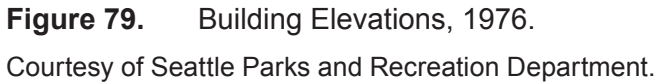


Figure 78. Roof Plan, 1976.
Courtesy of Seattle Parks and Recreation Department.



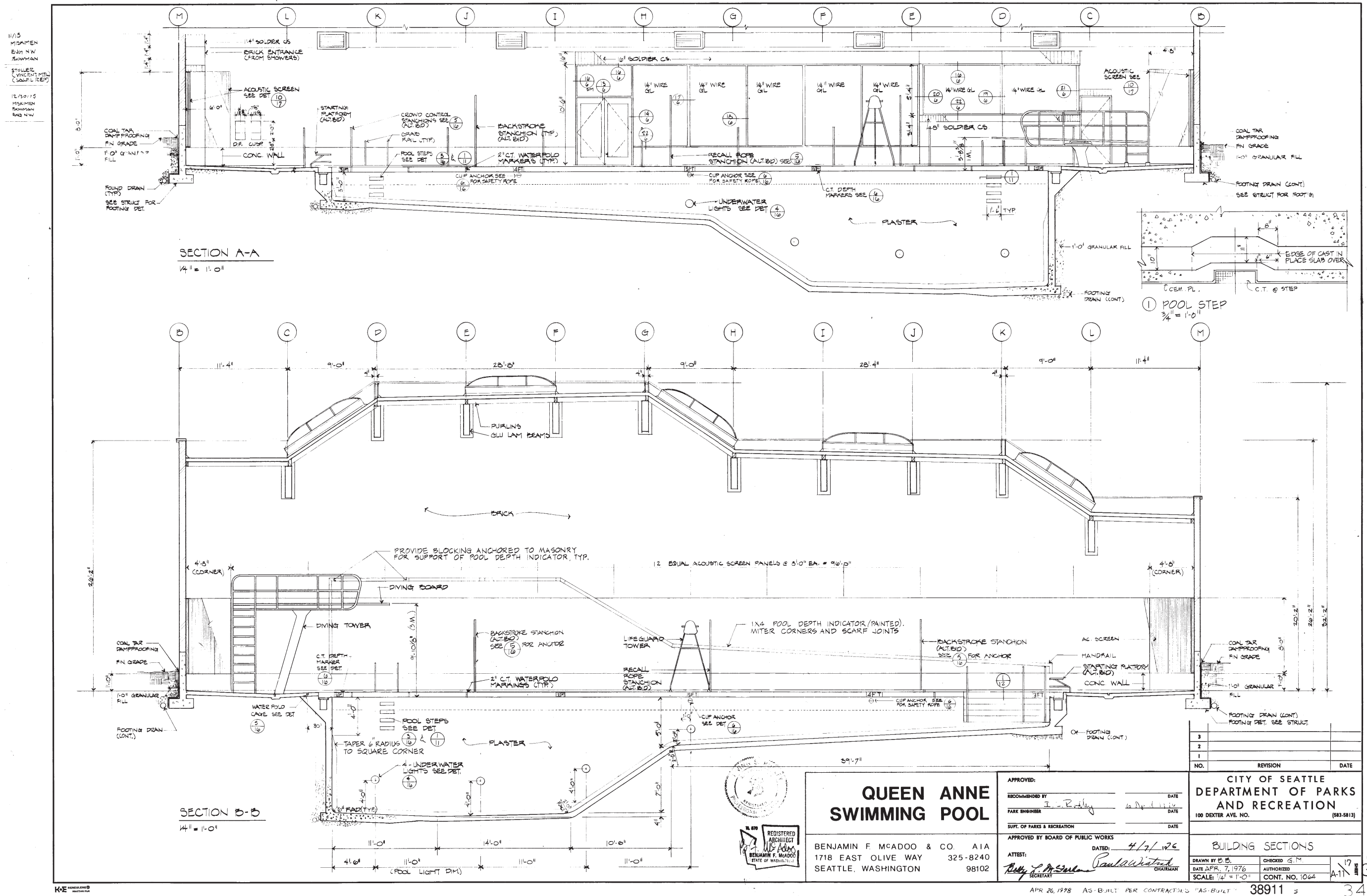


Figure 80. Building Sections, 1976.
Courtesy of Seattle Parks and Recreation Department.

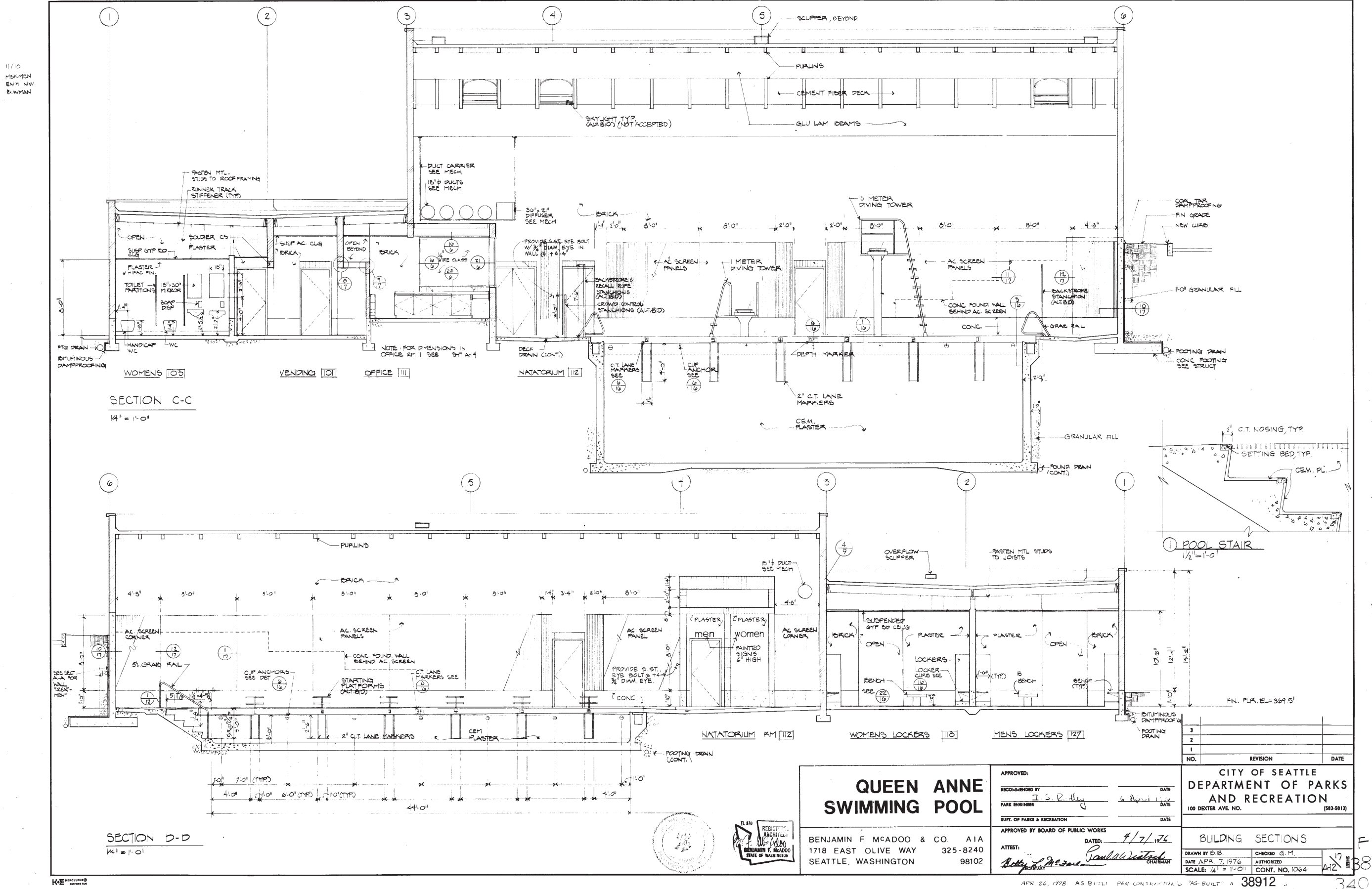


Figure 81. Building Sections, 1976.
Courtesy of Seattle Parks and Recreation Department.

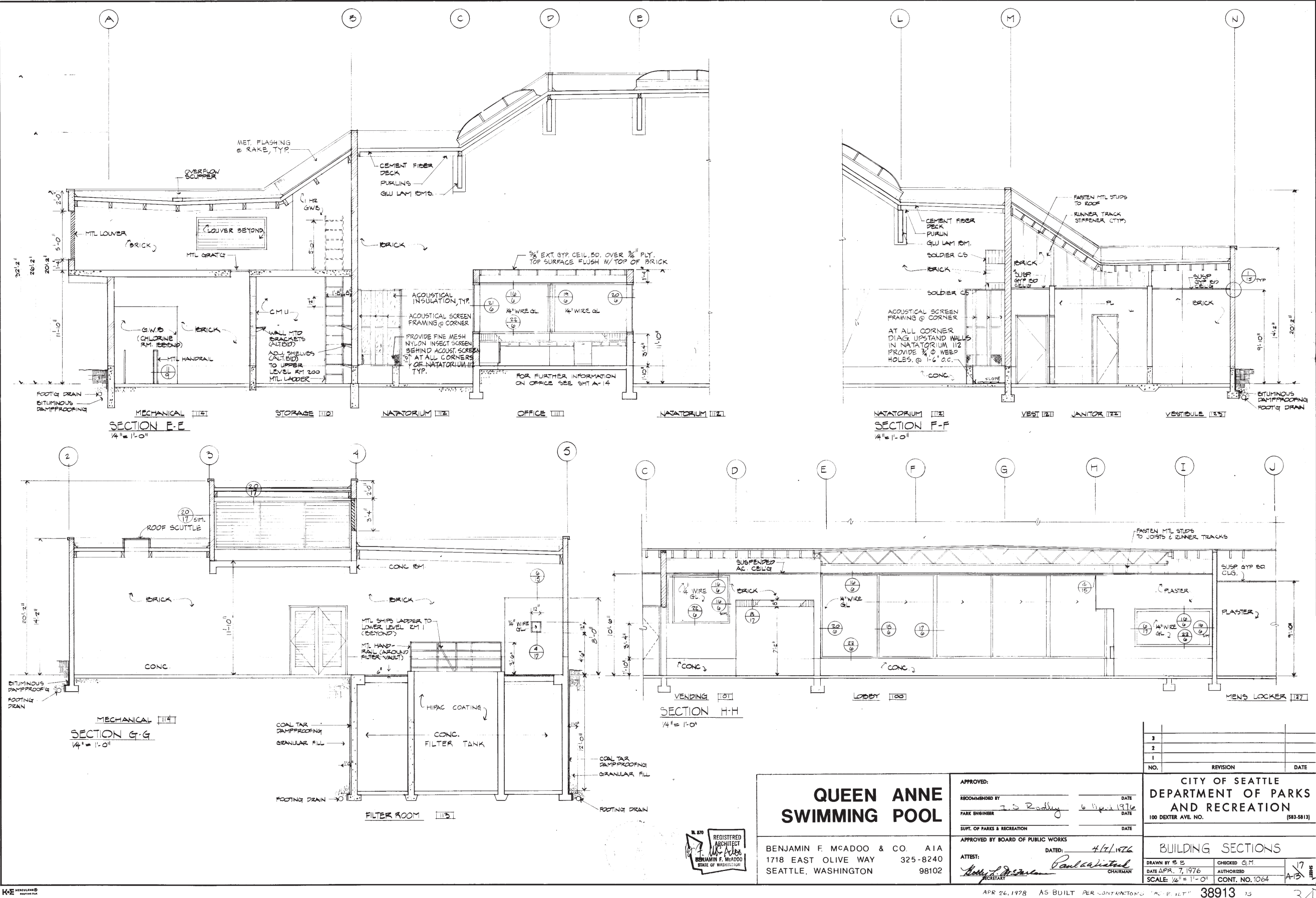


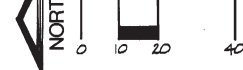


Figure 82. Building Sections, 1976.
Courtesy of Seattle Parks and Recreation Department.



 <p>should partner with the state</p>	 <p>STATE OF WASHINGTON DEPARTMENT OF PARKS AND RECREATION</p>	
<p><i>Paul A. Carothers</i> RICHARD A. CAROTHERS CERTIFICATE No. 27</p>		
<p>APPROVED: _____ DATE: _____</p>		
<p>RECOMMENDED BY: <i>I. S. Rodley</i> DATE: <i>6 April 1976</i></p>		
<p>PARK ENGINEER _____ DATE: _____</p>		
<p>SUPV. OF PARKS & RECREATION _____ DATE: _____</p>		
<p>APPROVED BY BOARD OF PUBLIC WORKS _____ DATE: <i>4/7/76</i></p>		
<p>ATTENT: <i>Paul A. Winter</i> <i>John J. Williams</i> SECRETARY CHAIRMAN</p>		
<p>CITY OF SEATTLE DEPARTMENT OF PARKS AND RECREATION 100 DEXTER AVE. NO. (582-5813)</p>		
<p>QUEEN ANNE POOL</p>		
<p>PLANTING PLAN</p>		
<p>DRAWN BY <u>WORTHY</u> CHECKED <u>WORTHY</u></p>		
<p>DATE <u>4/6/76</u> AUTHORIZED _____</p>		
<p>SCALE <u>1" = 20'</u> CONT. NO. <u>101a</u></p>		

39052 340

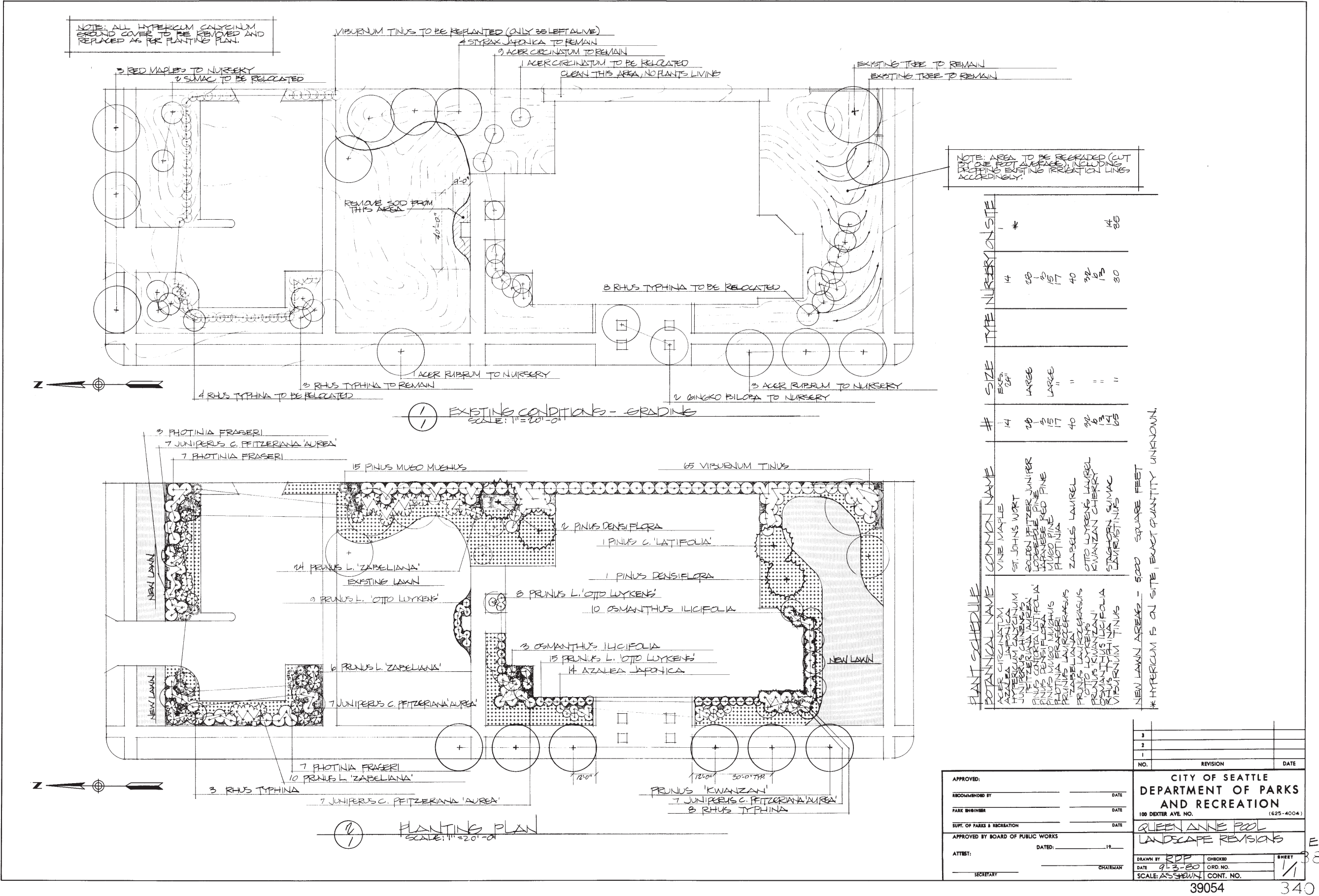


Figure 84. Landscape Revisions Plan, 1980.
Courtesy of Seattle Parks and Recreation Department.

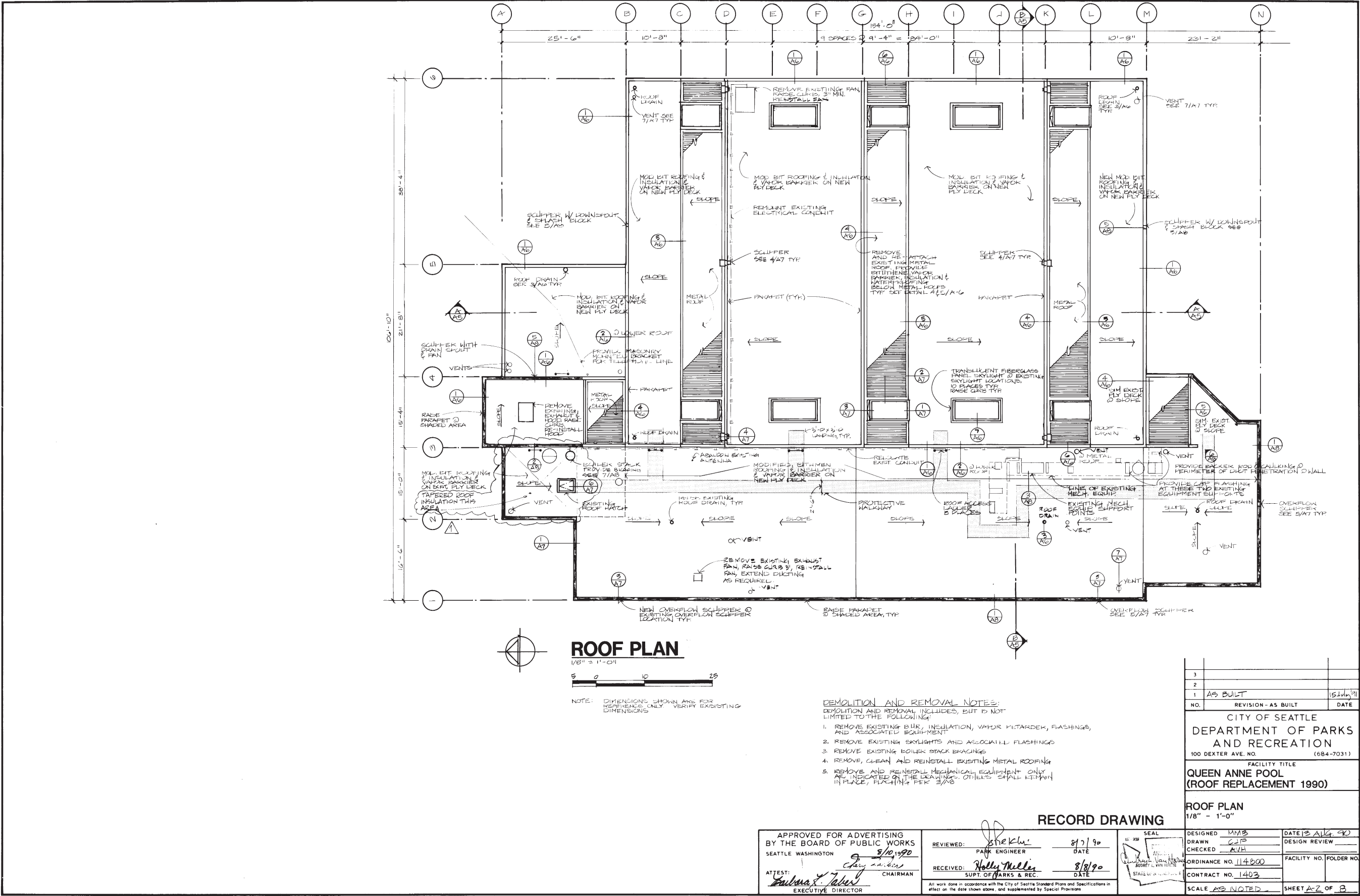


Figure 85. Roof Plan, 1990.
Courtesy of Seattle Parks and Recreation Department.

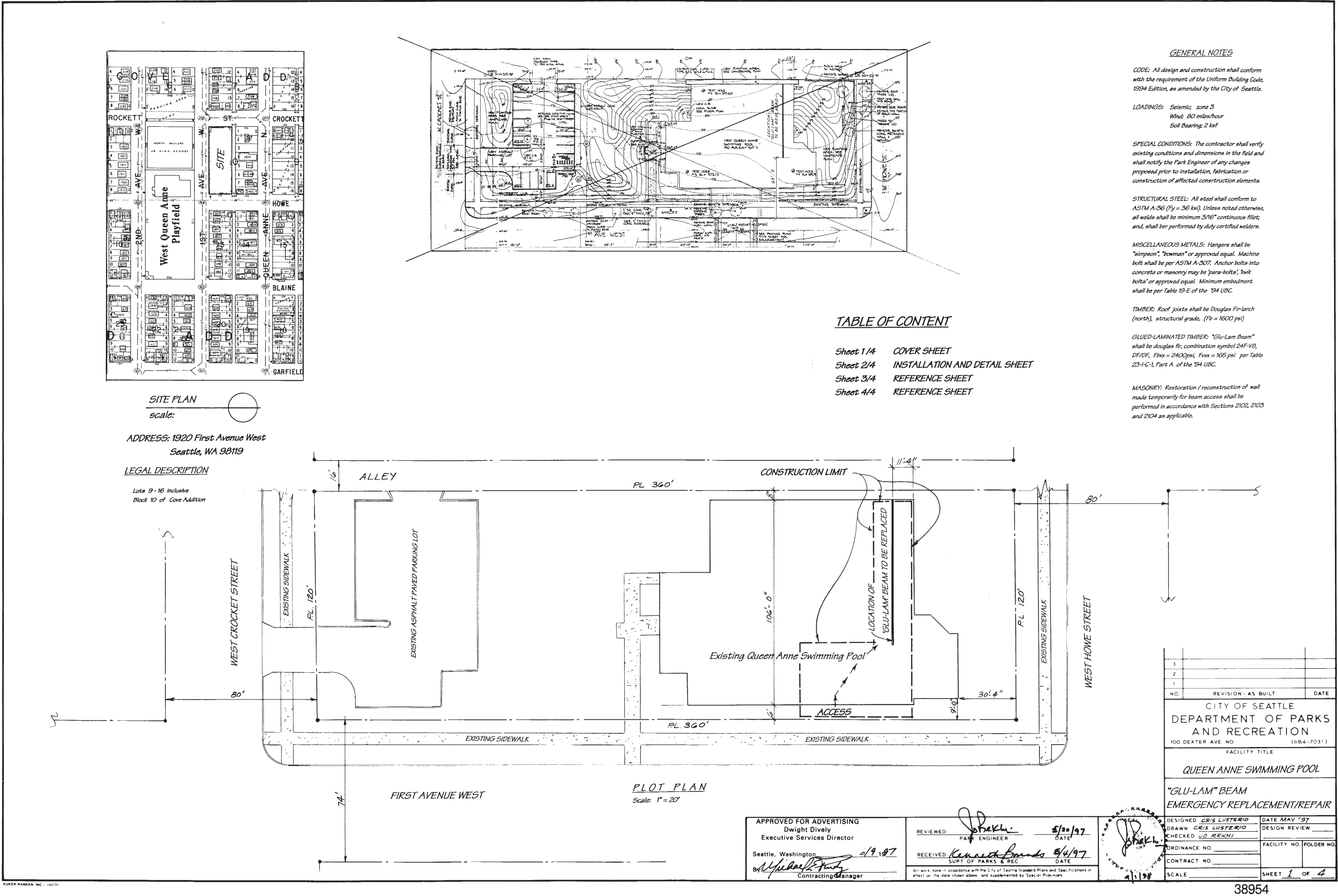


Figure 86. "Glu-Lam" Beam Emergency Replacement/Repair plan, 1997.
Courtesy of Seattle Parks and Recreation Department.

