

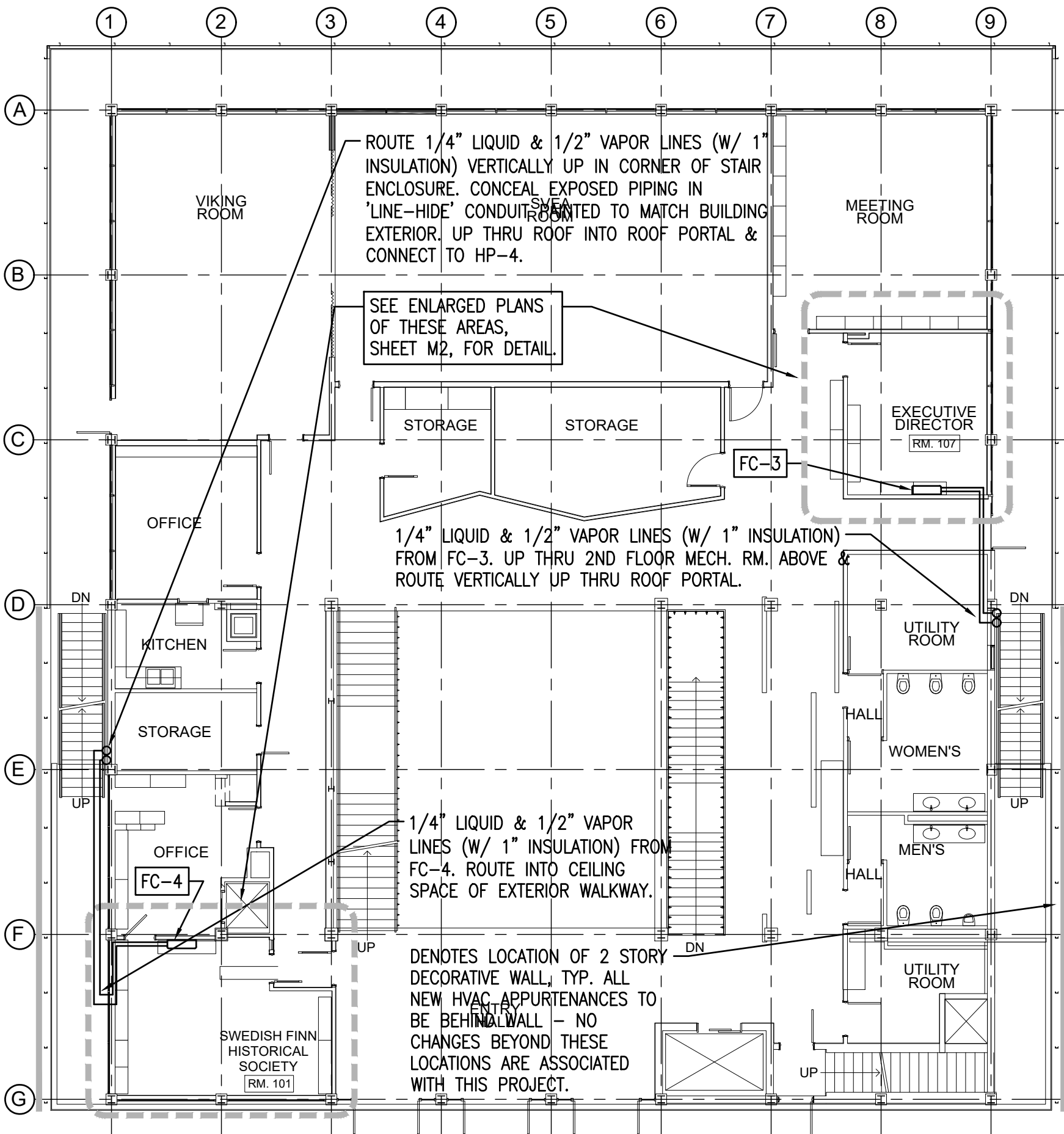
SOUTH ELEVATION - PERSPECTIVE VIEW
NO SCALE

DATE	REVISIONS

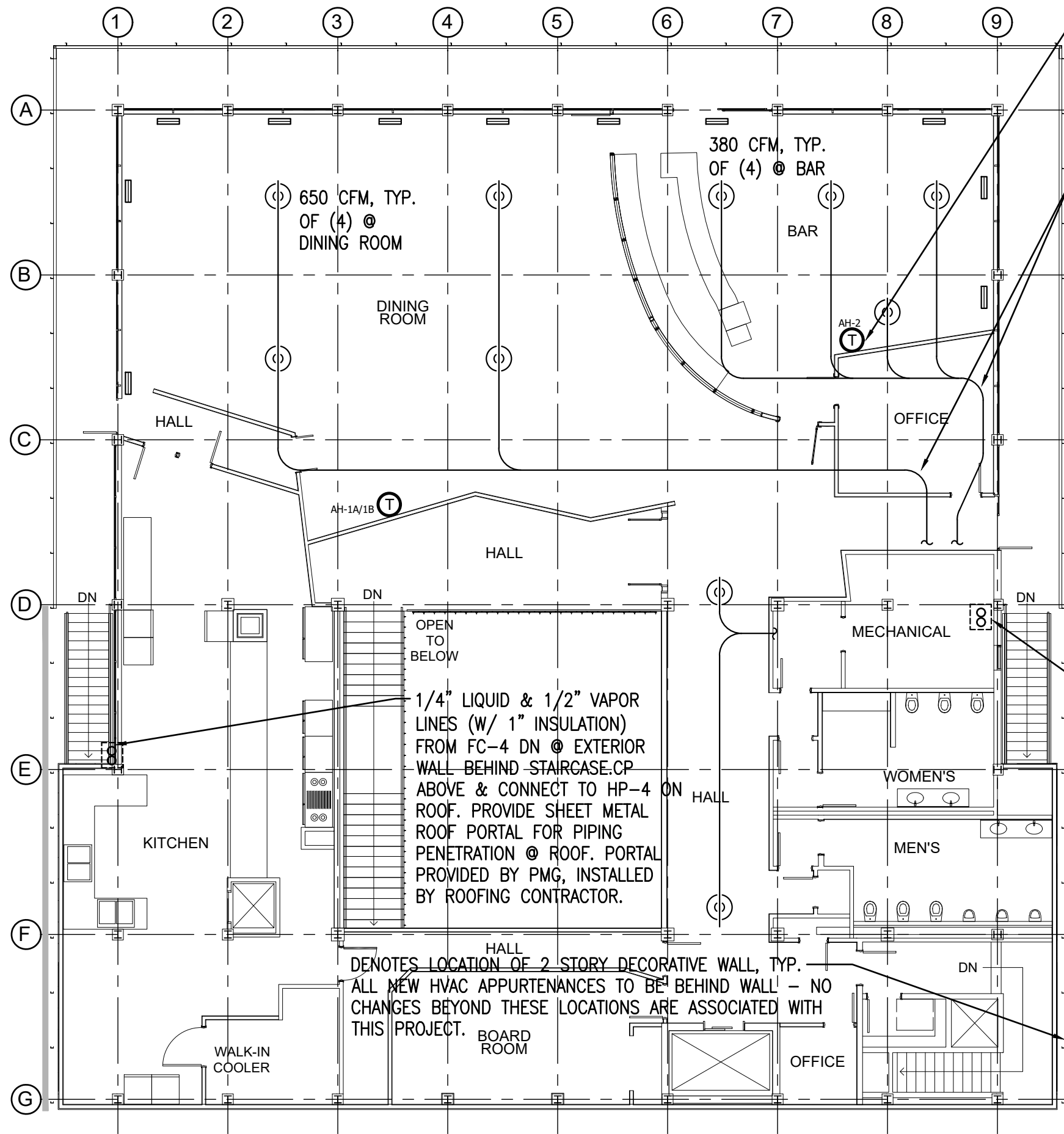
**LANDMARKS PRESERVATION
BOARD REVIEW
EXHIBITS**

The Swedish Club
Founded 1892
HVAC System Retrofit
1920 Dexter Avenue North, Seattle, WA 98107

DATE:
DRAWN: MS
ENGR: MS
APPVD:
JOB NUMBER: 118734



1st FLOOR PLAN - HVAC
SCALE: 3/32" = 1'-0"

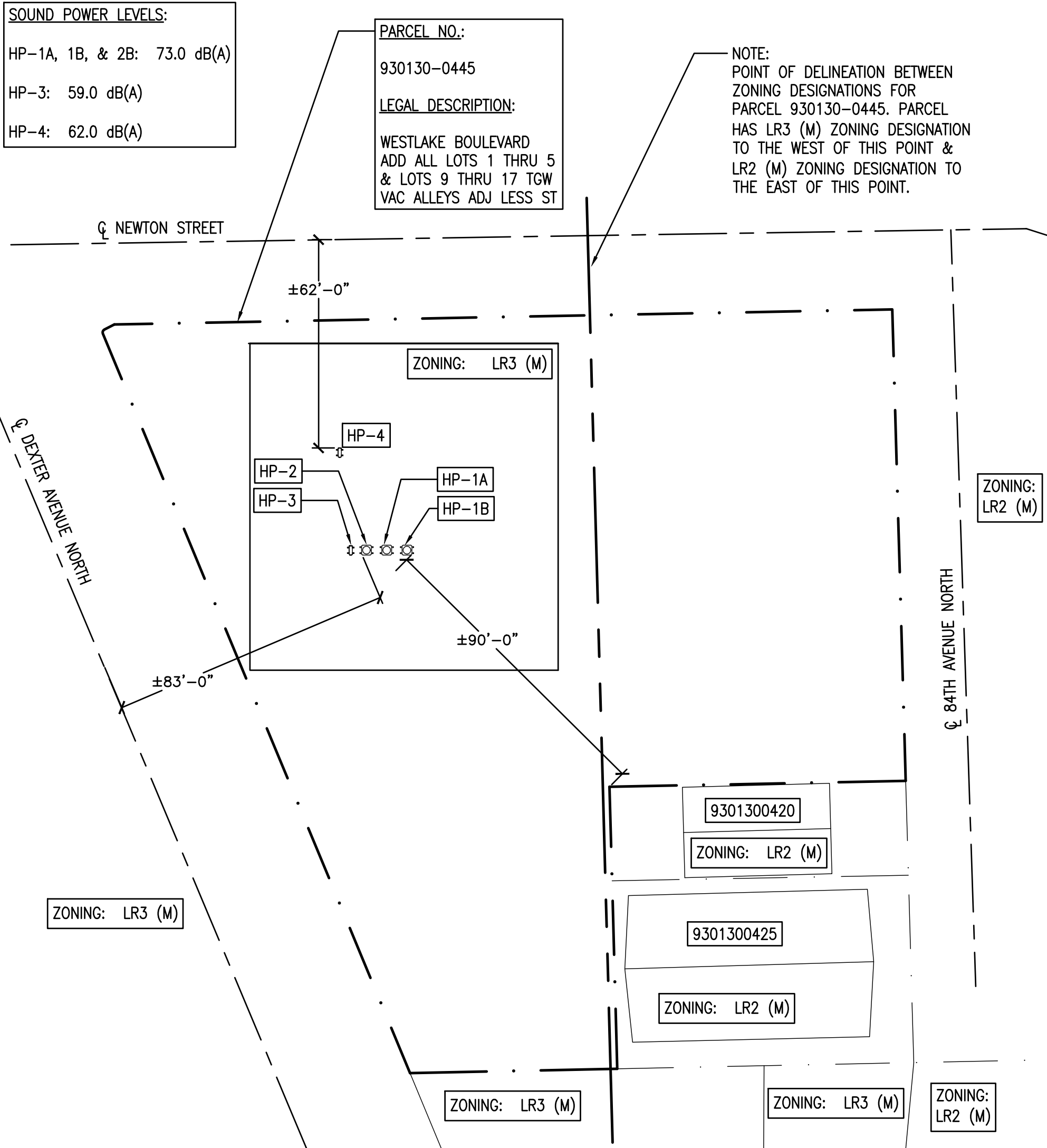


2nd FLOOR PLAN - HVAC
SCALE: 3/32" = 1'-0"



1920 Dexter Avenue North

VICINITY MAP
NO SCALE



SITE PLAN
1" = 30'-0"

SPLIT SYSTEM HEAT PUMP SCHEDULE

UNIT NO.	MFCR./MODEL	DESCRIPTION	COOLING CAPACITY BTUH			SEER2	HEATING CAPACITY BTUH (@47°F)	HSPF2	SUPPLY FAN		ELECTRICAL			WEIGHT LBS.	NOISE Db(A)	NOTES
			TOTAL	SENSIBLE					CFM	ESP (WC)	VOLT/PH	MCA	MOCP			
HP-1A & 1B	CARRIER/25TPA748A003	AIR-COOLED HEAT PUMP OD UNIT	45,260	32,000	16.5		46,460	8.1	-	-	208/230/1Ø	33.5	50	280	73	3, 4, 5, 6
HP-2	CARRIER/25TPA748A003	AIR-COOLED HEAT PUMP OD UNIT	46,470	35,090	16.5		47,380	8.1	-	-	208/230/1Ø	33.5	50	280	73	3, 5,
AH-1A & 1B	CARRIER/FV4CNB005L00	VERTICAL MULTI POISE AIR HANDLER	4	4	4		4	4	1260	0.5"	208/230/1Ø	44.7	45	150	N/A	3, 4, 5, 6
AH-2	CARRIER/FV4CNB005L00	VERTICAL MULTI POISE AIR HANDLER	4	4	4		4	4	1520	0.5"	208/230/1Ø	44.7	45	150	N/A	3, 5,

- NOTES:
1. NOT USED
 2. PROVIDE W/ NEW CONDENSATE PUMP
 3. ELECTRICIAN TO PROVIDE DISCONNECT SWITCHES FOR ALL INDOOR & OUTDOOR UNITS
 4. AHRI RATED CARRIER COMBINATION OF 25TPA748A003/FV4CNB005L00, AHRI CERTIFICATION NO. 206348137
 5. SPLIT SYSTEMS EXEMPT FROM ECONOMIZER REQUIREMENTS PER SEC SECTION C403.5, EXCEPTION #1.
 6. PROVIDE O-TWIN CONTROL KIT TO ALLOW HP-1A & 1B/AH-1A & 1B SPLIT SYSTEMS TO OPERATE IN PARALLEL AND BE CONTROLLED FROM A SINGLE THERMOSTAT.

MINI SPLIT SYSTEM HEAT PUMP SCHEDULE

UNIT NO.	MFCR./MODEL	DESCRIPTION	COOLING CAPACITY		SEER	HEATING CAPACITY BTUH (@47°F)	HSPF	SUPPLY FAN		ELECTRICAL			WEIGHT LBS.	NOISE Db(A)	NOTES
			BTUH					CFM	ESP (WC)	VOLT/PH	MCA	MOCP			
HP-3	CARRIER/38MARBQ18AA3	AIR-COOLED HEAT PUMP OD UNIT	18,000	21.5		18,000	13.0	-	-	208/230/1Ø	16	25	101	59	3, 4, 6
HP-4	CARRIER/38MARBQ24AA3	AIR-COOLED HEAT PUMP OD UNIT	24,000	21.5		24,000	12.0	-	-	208/230/1Ø	25	35	135	62	3, 5, 6
FC-3	CARRIER/40MAHBQ18XA3	WALL MOUNT FAN COIL	4	4	4	4	4	306/376/524/635	N/A	208/230/1Ø	0.2	N/A	27	N/A	2, 3, 4, 6, 7
FC-4	CARRIER/40MAHBQ24XA3	WALL MOUNT FAN COIL	5	5	5	5	5	319/414/611/719	N/A	208/230/1Ø	0.625	N/A	44	N/A	2, 3, 5, 6, 7

- NOTES:
1. NOT USED
 2. PROVIDE W/ NEW CONDENSATE PUMP
 3. ELECTRICIAN TO PROVIDE DISCONNECT SWITCHES FOR ALL INDOOR & OUTDOOR UNITS
 4. AHRI RATED CARRIER COMBINATION OF 38MARBQ18AA3/40MAHBQ18XA3, AHRI CERTIFICATION NO. 206348137
 5. AHRI RATED CARRIER COMBINATION OF 38MARBQ24AA3/40MAHBQ24XA37, AHRI CERTIFICATION NO. 206188260
 6. SPLIT SYSTEMS EXEMPT FROM ECONOMIZER REQUIREMENTS PER SEC SECTION C403.5, EXCEPTION #1.
 7. INDOOR WALL MOUNT FAN COIL POWERED BY HEAT PUMP OD UNIT.

CODE COMPLIANCE NOTES:

1. DAMPERS TO COMPLY WITH SEC SECTION C403.7.8.1 REQUIREMENTS FOR CLASS I MOTORIZED DAMPERS.
2. AH-1A, 1B, & 2 TO COMPLY WITH SEC SECTION C403.1.4 EXCEPTIONS #5 & #6 FOR ELECTRIC RESISTANCE HVAC EQUIPMENT. ELECTRIC RESISTANCE HEAT COMPLIES WITH ALL REQUIREMENTS FOR USE FOR DEFROST & SUPPLEMENTAL HEAT
3. NEW SPLIT SYSTEM HEAT PUMPS MEET THE REQUIREMENTS OF SEC TABLE C403.3.2(2).
4. PROVIDE DUCT SMOKE DETECTORS IN COMPLIANCE WITH SMC SECTION 606.2.
5. AH-1A, 1B, & 2 TO COMPLY WITH SEC SECT 403.8.5.1 REQUIREMENTS FOR FAN AIRFLOW CONTROL.
6. (5) NEW SPLIT-SYSTEM HEAT PUMPS ARE EXEMPT FROM ECONOMIZER REQUIREMENTS PER SEC SECTION C403.6, EXCEPTION #1.

MIN. OUTSIDE AIR QUANTITIES - 2018 SMC TABLE TABLE 403.3.1.1 REQUIREMENTS

ROOM	OCCUPANCY CLASS	ZONE AREA (SQ. FT.)	OCCUPANTS QUANTITY	PEOPLE RATE (CFM/PERSON)	AREA RATE (CFM/SQ. FT.)	TOTAL PEOPLE RATE (CFM)	TOTAL AREA RATE (CFM)	ZONE OSA TOTAL (CFM)
Dining Room	Food & Beverage Service	1689	63	7.5	0.18	473	304	777
Bar	Food & Beverage Service	766	37	7.5	0.18	278	138	415
Office 101	Office Spaces	250	3	5	0.06	15	15	30
Office 107	Office Spaces	185	4	5	0.06	20	11	31
								1253

- NOTES:
1. OCCUPANTS FOR DINING ROOM AND BAR ARE FROM EXISTING SEATING PLAN - DEFAULT OCCUPANT DENSITIES FROM TABLE 403.3.1.1 NOT USED. DINING ROOM AND BAR ARE FOR PRIVATE FUNCTIONS AND NOT FOR TYPICAL COMMERCIAL RESTAURANT USE. MINIMUM CALCULATED RATES HERE COMPLY WITH SMC SECTION 403.3.1.1, EXCEPTION 1 REQUIREMENTS - NOT LESS THAN ONE-HALF OF CALCULATED TABLE 403.3.1.1 REQUIREMENTS.
 2. MINIMUM OUTSIDE AIR DELIVERED TO SPACES WITH NEW ENERGY RECOVERY VENTILATORS (ERV); 1200 CFM ERV TO SERVE DINING ROOM & BAR, 50 CFM ERV TO SERVE OFFICE 101, & 50 CFM ERV TO SERVE OFFICE 107.

Performance
Mechanical Group

Dynamic Solutions for the Built Environment

1920 DEXTER AVENUE NORTH, SUITE 100
SEATTLE, WA 98107
PH: 206.467.2579
FAX: 206.467.2578
STATE CONTRACTOR LICENSE NUMBER: 190000000000000000

DATE	
REVISIONS	

EQUIPMENT SCHEDULES

SITE PLAN

& GENERAL INFORMATION

The Swedish Club
Founded 1892

HVAC System Retrofit

1920 Dexter Avenue North, Seattle, WA 98107

DATE: 7/1/2023

DRAWN: MS

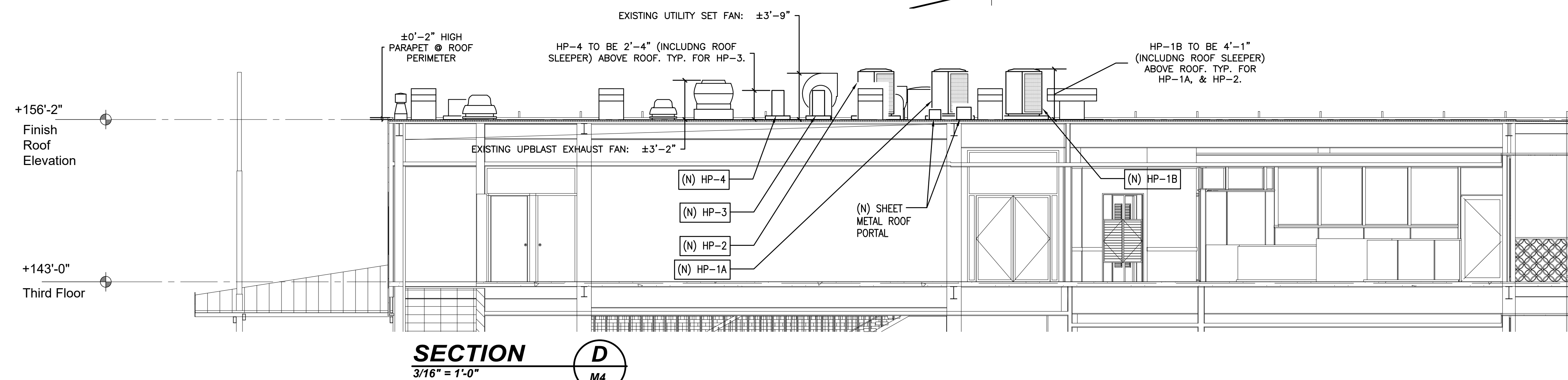
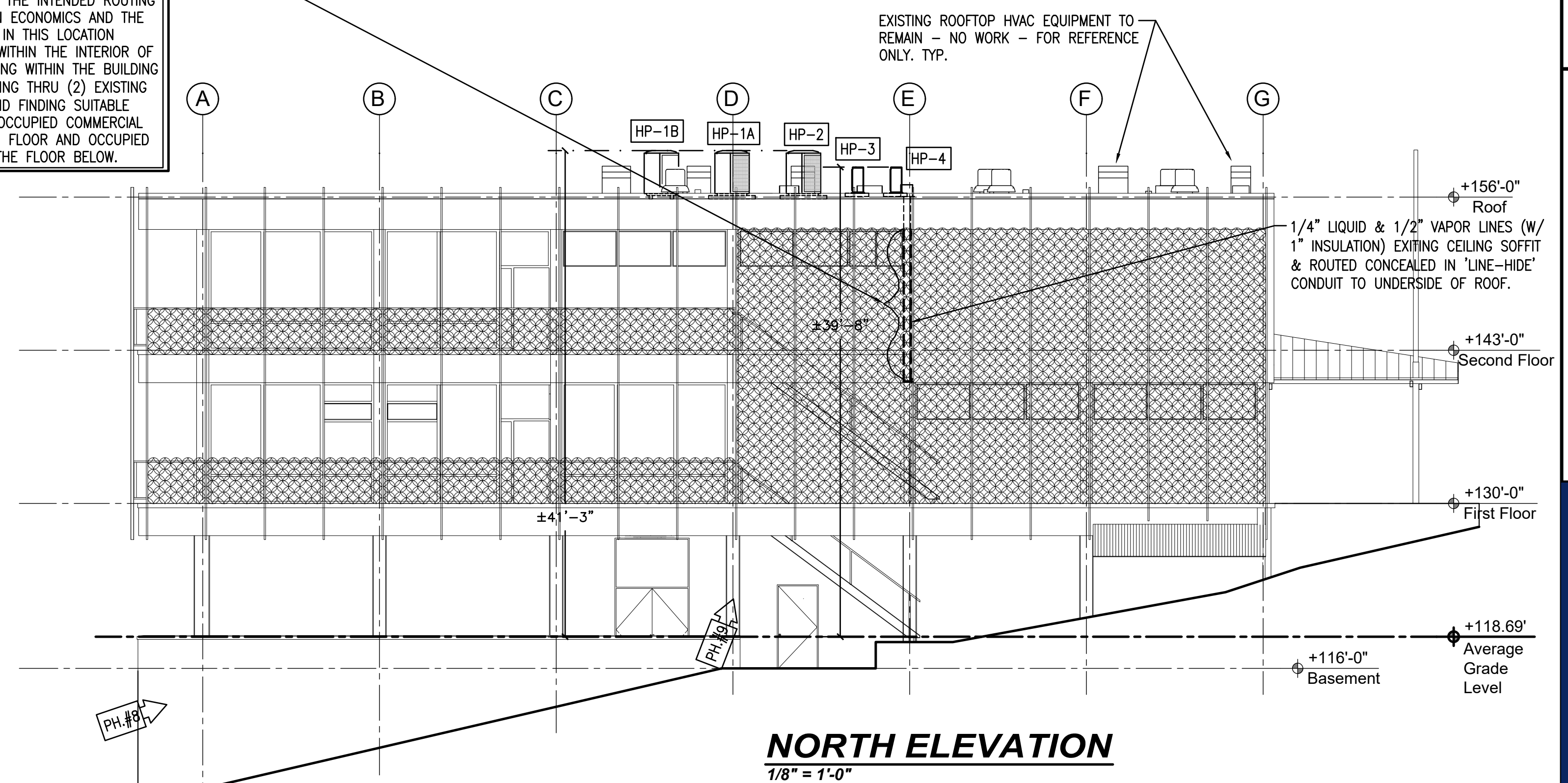
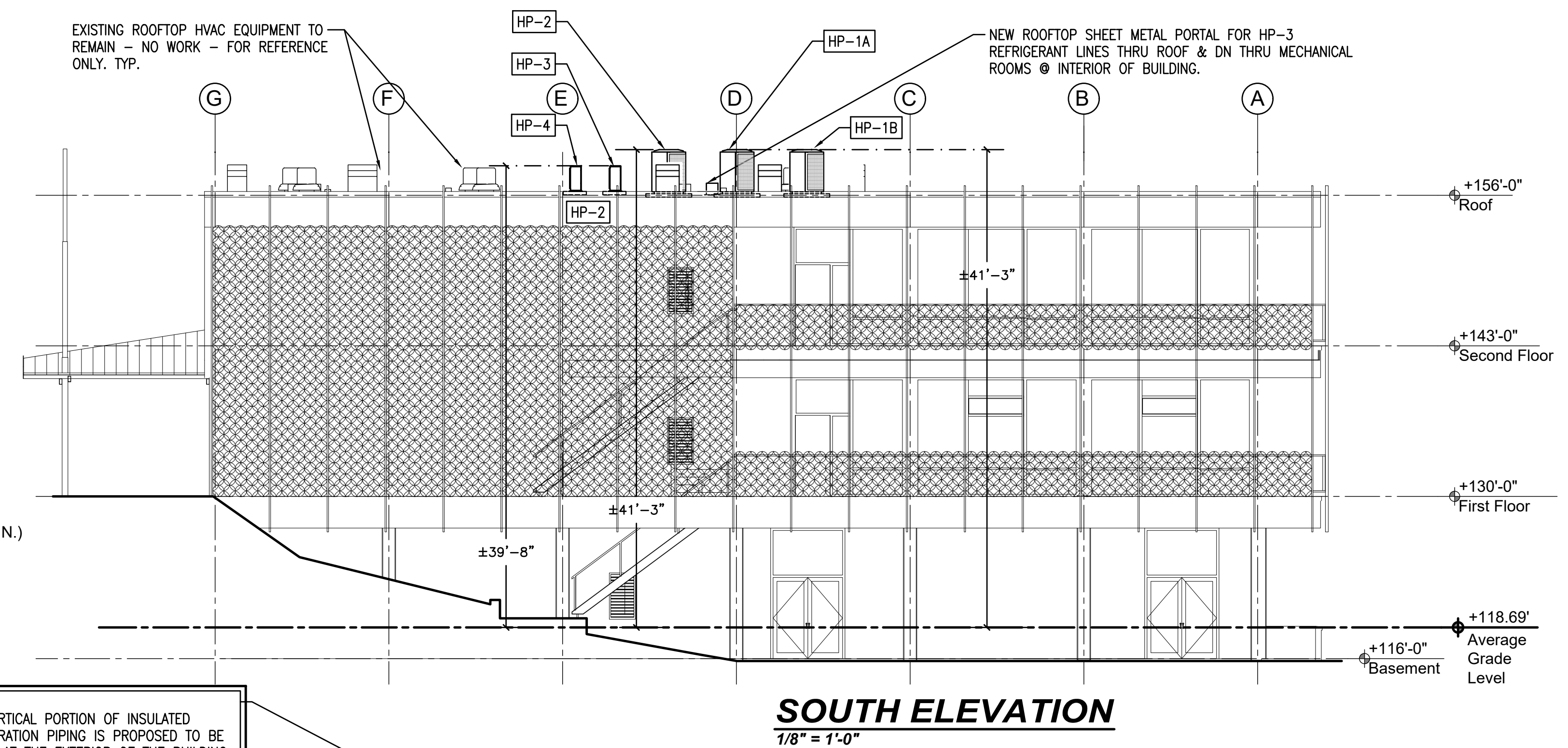
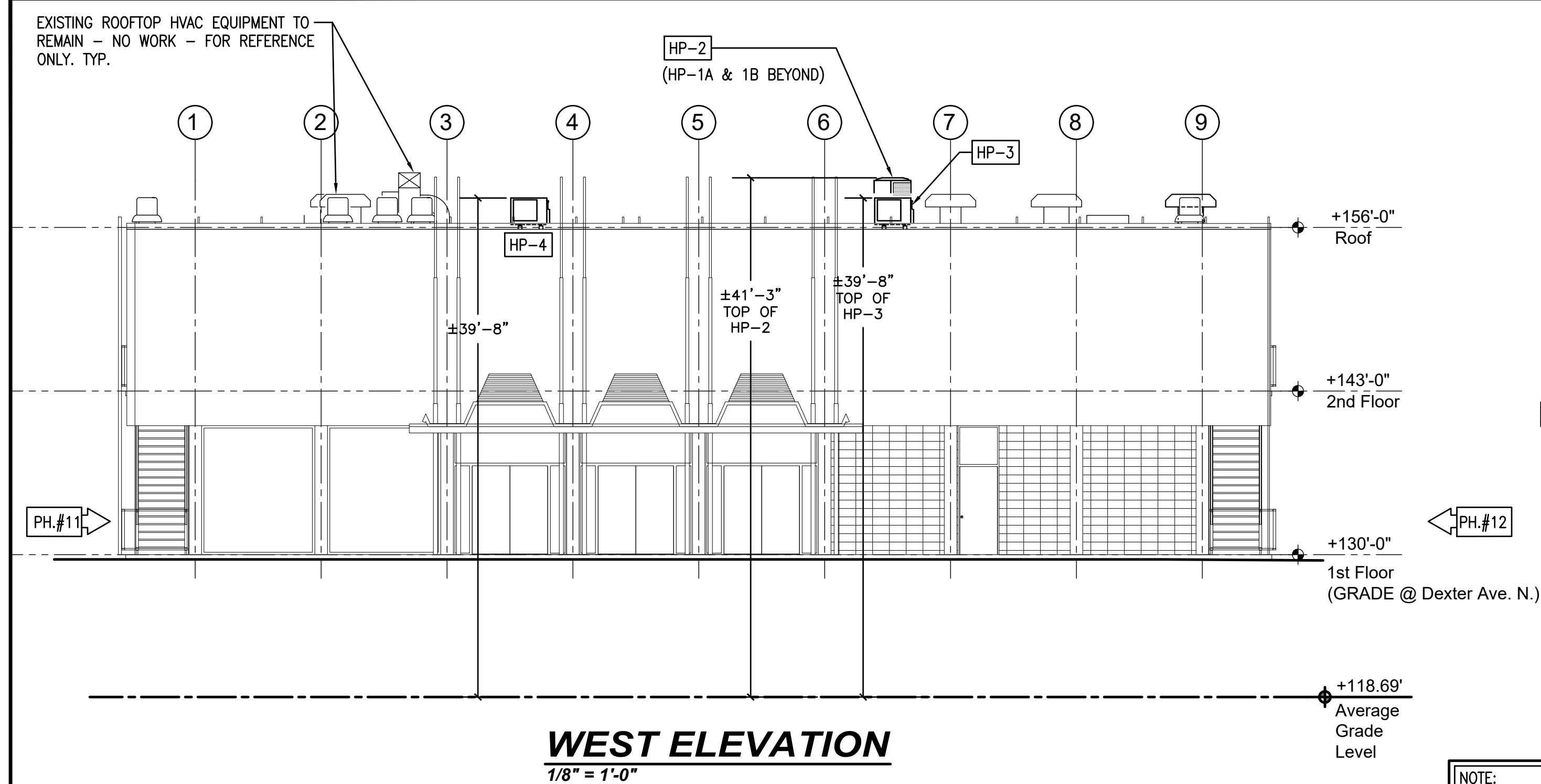
ENGR: MS

APPVD:

JOB NUMBER:
118734

M1

SHEET 1 OF 4

[illegible]

DATE:	7/1/2023
DRAWN:	MS
ENGR:	MS
APPVD:	
JOB NUMBER:	118734



Existing roof to be altered with the addition of (5) new HVAC condensing units mounted on 4x4 wood sleepers. (3) sheet metal roof portals will be installed on roof to provide path for utilities required for new condensing units. See Mechanical Plans for detail.

1



2



3



4



5a

NOT USED - NO NEW MECHANICAL
ON SOUTH EXTERIOR WALL



taken at 2nd Floor

5b

NOT USED - NO NEW MECHANICAL
ON SOUTH EXTERIOR WALL



6a

NOT USED - NO NEW MECHANICAL
ON SOUTH EXTERIOR WALL



6b

taken at 2nd Floor

NOT USED - NO NEW MECHANICAL
ON SOUTH EXTERIOR WALL



6c

taken at 1st Floor

NOT USED - NO NEW MECHANICAL
ON SOUTH EXTERIOR WALL



7a

NOT USED - NO NEW MECHANICAL ON SOUTH EXTERIOR WALL



7b

NOT USED - NO NEW MECHANICAL
ON SOUTH EXTERIOR WALL

taken at 2nd Floor



8a

Approximate location of vertical 'line hide' beyond existing decorative facade. Line hide to be painted to match exterior wall color.



8b



8c

Ceiling Entry Fitting					
Product	A	B	C	D	Weight (ounces)
NK-60	4-5/16	4-5/16	5/8		2.4
NK-75	4-15/16	4-1/2	5/8		2.7
NK-100	6-7/8	5-11/16	5/8		4.5
NK-140	8-11/16	7-1/16	5/8		6.7

piping/insulation thru roof portal above

Dimensions (in inches)						Weight (ounces)
Product	A	B	C	D	E	
Split Line Tube (PVC)						
CD-60	2 1/4	2 5/16	78 3/4			38.8
CD-75	2 15/16	2 7/16	78 3/4			44.1
CD-100	3 7/8	2 11/16	78 3/4			64.2
CD-140	5 7/16	3 1/16	78 3/4			72.4

taken at Top Floor

+/- 13'-0"

Wall Cover/Inlet						
Product	A	B	C	D	E	Weight (ounces)
NW-60	2-9/16	2-9/16	7-7/8	3-1/16	3-3/16	6.3
NW-75	3-1/4	2-11/16	8-3/4	3-11/16	3-3/4	7.9
NW-100	4-3/16	2-15/16	9-1/8	4-11/16	3-3/4	10.6
NW-140	5-3/4	3-3/8	11-1/4	6-1/4	4-1/8	16.2

Refrigerant piping will be routed into exterior walkway ceiling void & run horizontally and exit void @ stair enclosure. Vertical portion of lineset concealed in "line hide" painted to match exterior wall color.

11-1/4"

6-1/4"

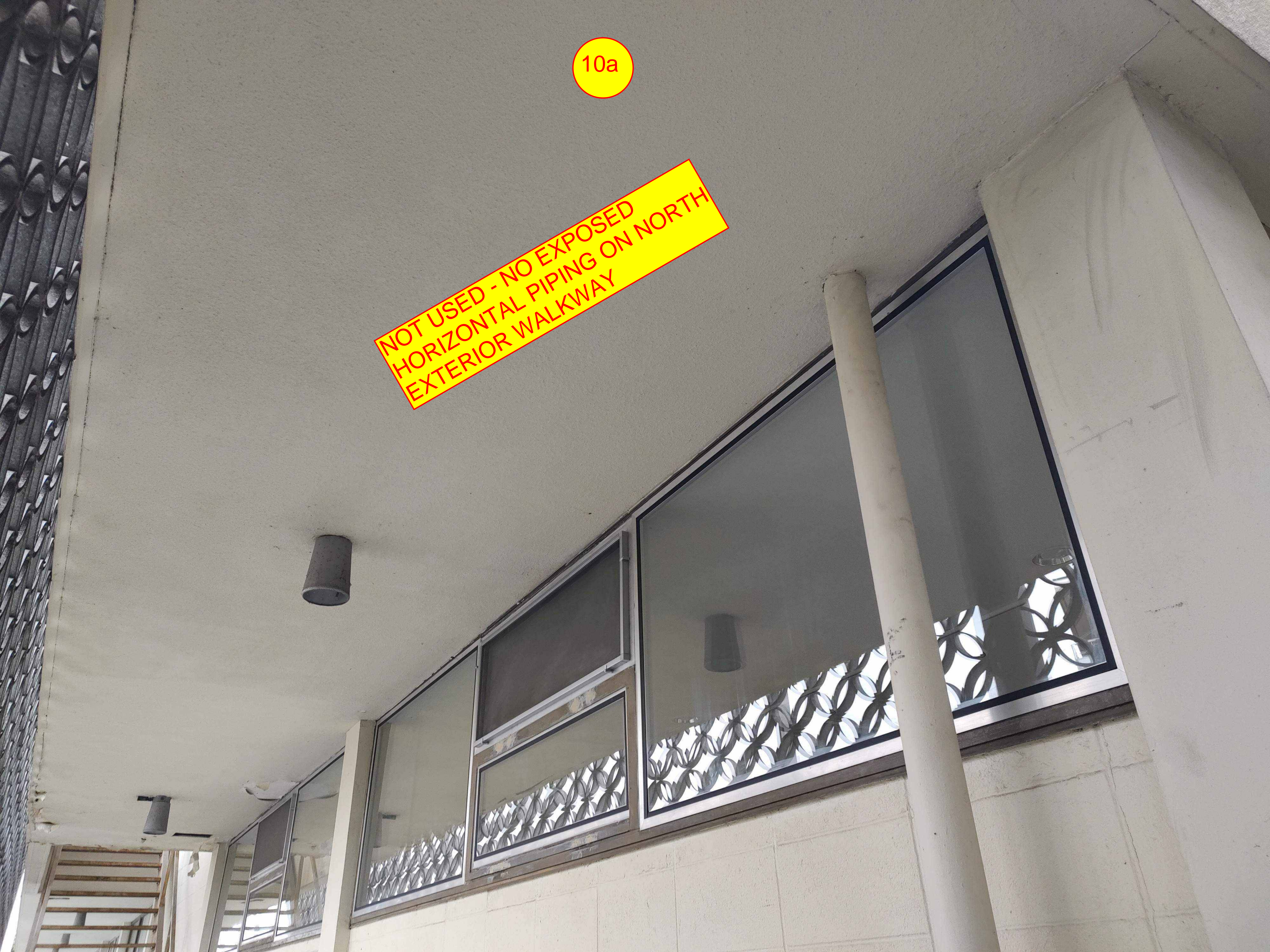
3-1/16"
5-7/16"

9a



10a

NOT USED - NO EXPOSED
HORIZONTAL PIPING ON NORTH
EXTERIOR WALKWAY



10b

NOT USED - NO EXPOSED
HORIZONTAL PIPING ON NORTH
EXTERIOR WALKWAY



10c

NOT USED - NO EXPOSED
HORIZONTAL PIPING ON NORTH
EXTERIOR WALKWAY





10d

PRIVATE
PROPERTY
NO
TRESPASSING

11



12





Typical split system heat pump outdoor unit (HP-1A, 1B, & 2) installation on roof. The installation at the Swedish Club will resemble this example. Our installation will have wood sleepers with sheet metal caps & a single sheet metal roof portal housing (3) linesets to be routed a short distance on roof deck to their respective heat pump outdoor unit.

HP-3 & 4

Product Data



Fig. 1 —Sizes 09K - 36K

NOTE: Images are for illustration purposes **only**. Actual models may differ slightly.

TABLE OF CONTENTS

	PAGE
INDUSTRY LEADING FEATURES / BENEFITS	1
MODEL NUMBER NOMENCLATURE	3
STANDARD FEATURES AND ACCESSORIES	4
DIMENSIONS	5
CLEARANCES.....	8
SPECIFICATIONS	9
COMPATIBILITY.....	10
PERFORMANCE	11
COOLING PERFORMANCE - HIGH WALL	13
HEATING PERFORMANCE - HIGH WALL.....	15
COOLING PERFORMANCE - CASSETTE	17
HEATING PERFORMANCE - CASSETTE	18
COOLING PERFORMANCE - DUCTED.....	19
HEATING PERFORMANCE - DUCTED.....	20
COOLING PERFORMANCE - CONSOLE	21
HEATING PERFORMANCE - CONSOLE.....	22
COOLING PERFORMANCE - AIR HANDLER.....	23
HEATING PERFORMANCE- AIR HANDLER	23
APPLICATION DATA	24
WIRING	25
AIRFLOW DATA	26
SOUND PRESSURE	26
ELECTRICAL DATA	27
CONNECTION DIAGRAMS	28
WIRING DIAGRAMS.....	29
GUIDE SPECIFICATIONS.....	31

INDUSTRY LEADING FEATURES / BENEFITS

A PERFECT BALANCE BETWEEN BUDGET LIMITS, ENERGY SAVINGS AND COMFORT.

The 38MARB series ductless systems are a matched combination of an outdoor condensing unit and an indoor fan coil unit connected only by refrigerant tubing and wires.

The ductless system permits creative solutions to design problems such as:

- Add-ons to current space (an office or family room addition)
- Special space requirements
- When changes in the load cannot be handled by the existing system
- When adding air conditioning to spaces that are heated by hydronic or electric heat and have no ductwork
- Historical renovations or any application where preserving the look of the original structure is essential.

The ideal compliment to your ducted system when it is impractical or prohibitively expensive to use ductwork.

The compact indoor fan coil units take up very little space in the room and do not obstruct windows. The fan coils are attractively styled to blend with most room decors. Advanced system components incorporate innovative technology to provide reliable cooling performance at low sound levels.

DIMENSIONS (CONT)

HP-3 & 4

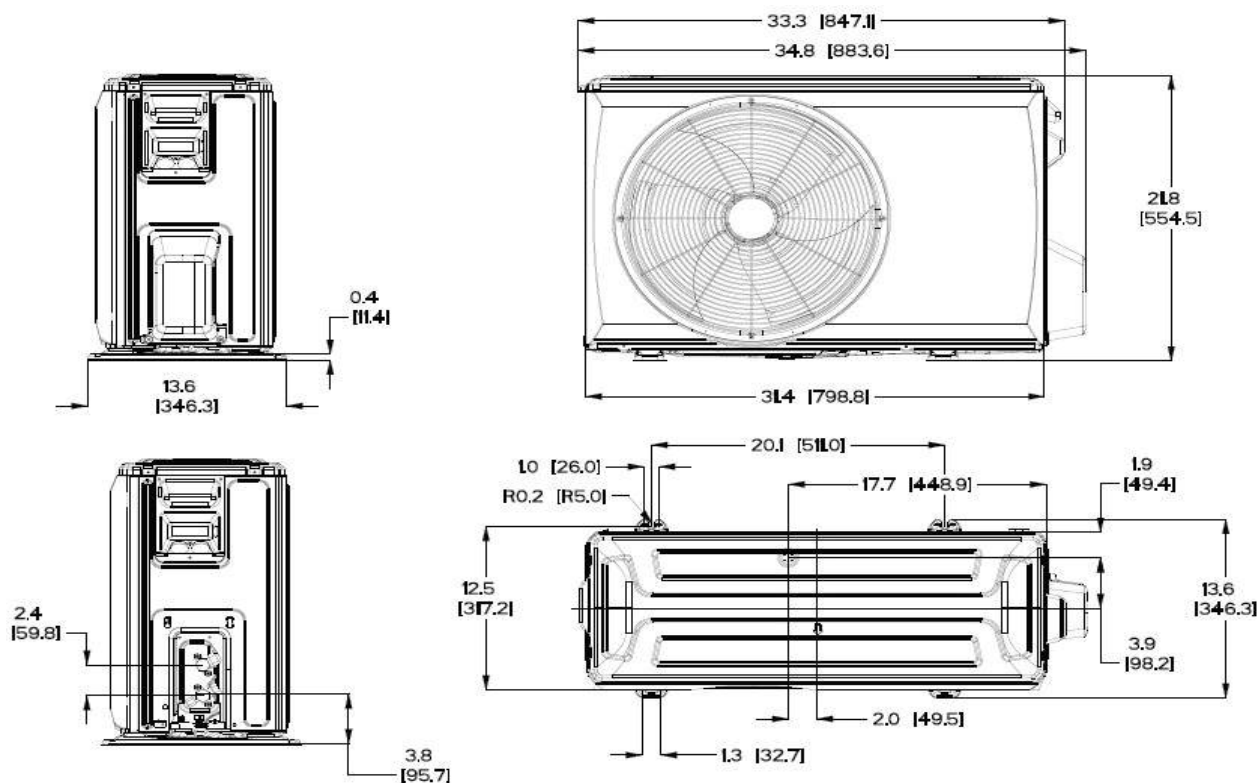


Fig. 5 — Dimension Size 18K

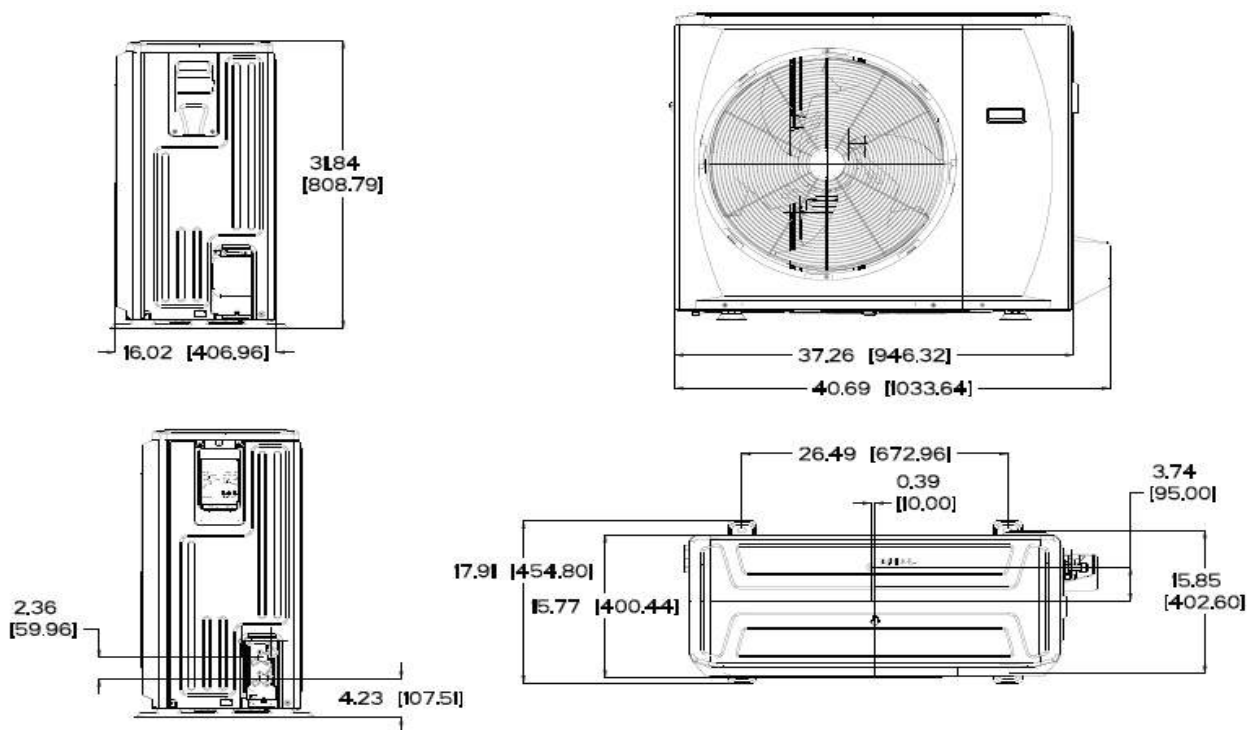


Fig. 6 — Dimension Sizes 24K, 30K, and 36K

Sheet metal roof portals for
refrigerant piping thru roof.

CROWN
PRODUCTS COMPANY, INC.

6390 Phillips Highway
Jacksonville, FL 32216
Phone (904) 737-7144

SPECIFICATION DATA SHEET

Date: 03/13/14 rev.

Drawn by: M.D.C.

MODEL No. 353

**ROOF JACK for REFRIGERANT LINES
(FLAT ROOF)**

DIMENSIONAL DATA

SIZES AVAILABLE "A" "C"

4" x 4" 4" 3"

6" x 6" 6" 3"

8" x 8" 8" 5"

10" x 10" 10" 5"

14" x 14" 14" 5"

8" OR 12" THROAT HEIGHT "B" AVAILABLE IN
ALL SIZES.

FABRICATION DATA

FABRICATED FROM HOT DIPPED GALVANIZED
STEEL SHEET OF LOCK FORMING QUALITY PER
ASTM-A653 CS TYPE B.

4" x 4" = 28 GAUGE

6" x 6" = 26 GAUGE

8" x 8" = 26 GAUGE

10" x 10" = 26 GAUGE

FEATURES

SEAMS SEALED WITH SILICONE SEALANT.

"FLIP TOP" DESIGNED TO EASE INSTALLATION
OF REFRIGERANT LINES.

4" OVER HANG FOR ADDITIONAL COVERAGE OF
REFRIGERANT LINES.

FOR FLAT ROOF.

OPTIONS

FABRICATED FROM .025" THICK ALUMINUM
SHEET 3003-H14 ALLOY

SPECIAL NOTES

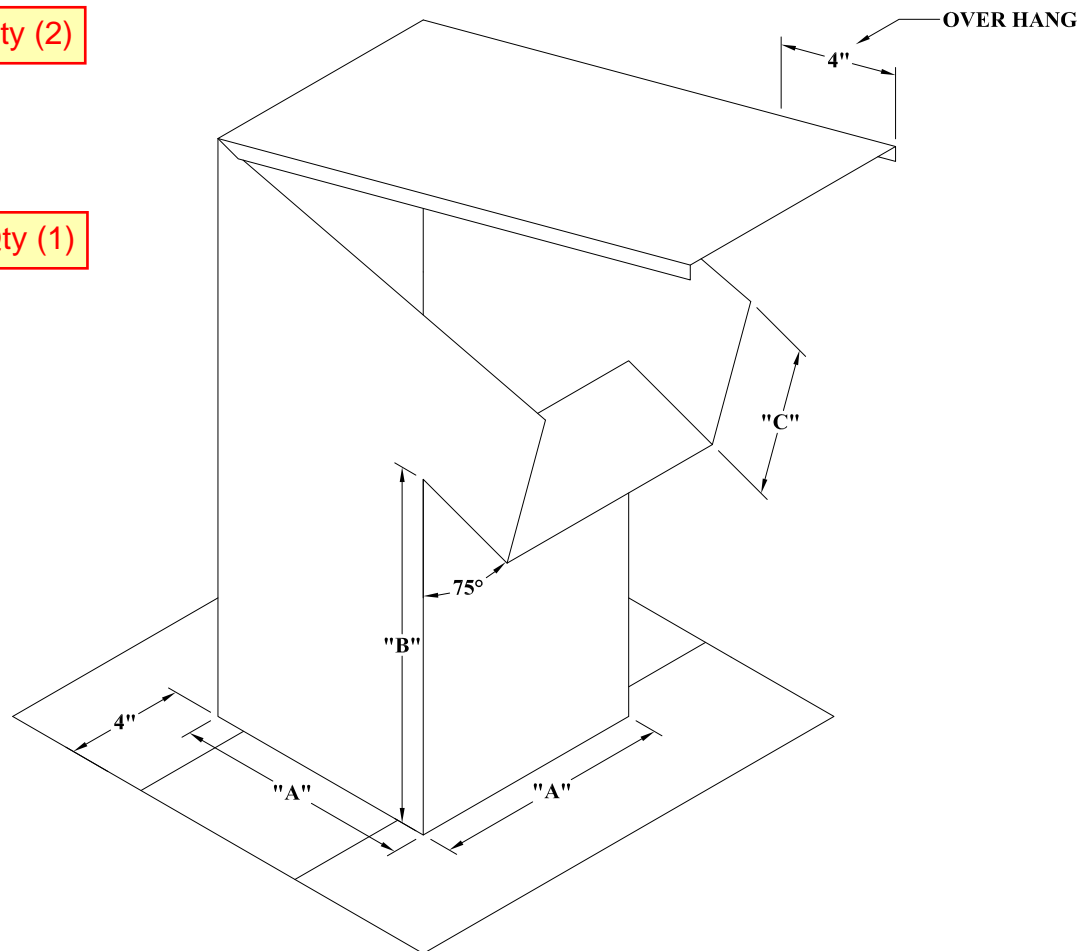
WE DO NOT WARRANT THESE ROOF MOUNTED FITTINGS TO BE LEAK-PROOF AGAINST ALL
WEATHER CONDITIONS.

WE DO NOT GUARANTEE THE FITTINGS WILL PREVENT RAIN WATER INTRUSION FROM WIND BLOWN
RAIN OR TORRENTIAL STORM CONDITIONS.

ADDITIONAL SEALING MIGHT BE NECESSARY AT THE DISCRETION OF THE INSTALLER.

Qty (2)

Qty (1)



Exterior refrigerant line sets.
Appx. 2-1/2" dia. x two. Occurs
@ roof only

Streamline[®]
Line Sets

DURAGUARD[™]
SOLAR RESISTANT INSULATION **UV**

Streamline[®] Line Sets & Suction Lines are now available with our unique Duraguard UV[™] Solar Resistant Insulation. This high-quality insulation has a durable, weather-resistant jacket and is designed to handle the toughest solar and weather conditions.



Streamline[®] LINE SET FEATURES:



- Made and assembled in the USA
- Copper Tube UL Recognized to 700 PSI MWP
- 10-year limited warranty on copper tube
- R410A Engineered and Tested
- ASTM B1003

Duraguard UV[™] INSULATION FEATURES:

- Abrasion and weather resistant polymeric jacket, providing the best protection in the industry
- Offered with 1/2" wall (R3), 3/4" wall (R5), and 1" wall (R7)
- Operating Temperature Range: -70°F to +220°F (ASTM C534)
- Insulating properties of elastomeric foam
- 5-year limited manufacturer warranty on insulation including UV Resistance
- Compliances: ASTM E 84 25/50, 2012/2015 IECC (Res. + Comm.), ASTM G153, UL 94 (fire stop), and CA Title 24, Section 120.3

LINE-HIDE™

Lineset Cover System

PROTECT & BEAUTIFY



**MITSUBISHI
ELECTRIC**

HVAC Advanced Products Division

**A complete system for
completing the job**

**Conduit for vertical refrigerant
piping @ North elevation**

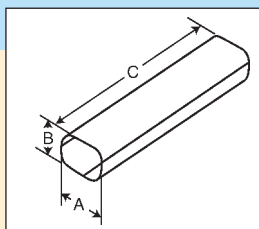


LINE-HIDE Lineset Cover System

PRODUCT INFORMATION & SPECIFICATIONS

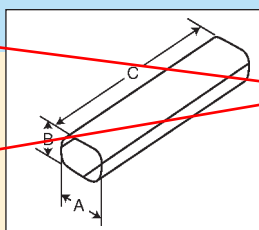
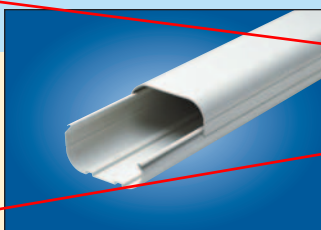


Product	Dimensions (in inches)					Weight (ounces)
	A	B	C	D	E	



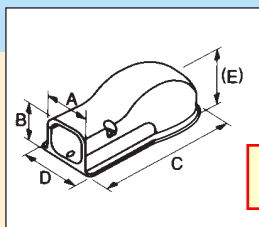
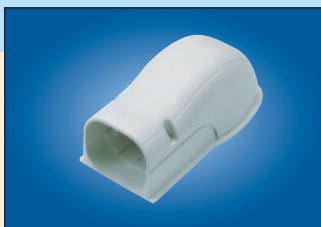
Split Line Tube (PVC)

CD-60	2-1/4	2-5/16	78-3/4			38.8
CD-75	2-15/16	2-7/16	78-3/4			44.1
CD-100	3-7/8	2-11/16	78-3/4			64.2
CD-140	5-7/16	3-1/16	78-3/4			73.4



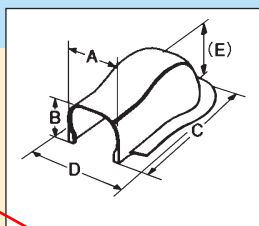
Split Line Tube (ASA)

DD-60	2-1/4	2-5/16	78-3/4			38.8
DD-75	2-15/16	2-7/16	78-3/4			44.1
DD-100	3-7/8	2-11/16	78-3/4			64.2
DD-140	5-7/16	3-1/16	78-3/4			73.4



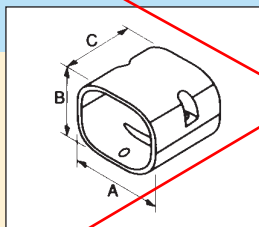
Wall Cover/Inlet

NW-60	2-9/16	2-9/16	7-7/8	3-1/16	3-3/16	6.3
NW-75	3-1/4	2-11/16	8-1/4	3-11/16	3-1/4	7.9
NW-100	4-3/16	2-15/16	9-1/8	4-11/16	3-3/4	10.6
NW-140	5-3/4	3-3/8	11-1/4	6-1/4	4-1/8	16.2



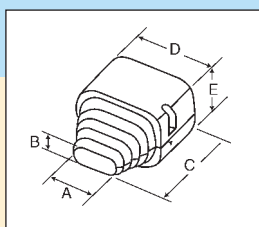
Simple Wall Cover

NY-60	2-9/16	2-9/16	7-7/8	3-1/16	3-3/16	6.3
NY-75	3-1/4	2-11/16	8-1/4	3-11/16	3-1/4	7.9
NY-100	4-3/16	2-15/16	9-1/8	4-11/16	3-3/4	10.6
NY-140	5-3/4	3-3/8	11-1/4	6-1/4	4-1/8	16.2



Socket/Coupling joins two pieces of tubing

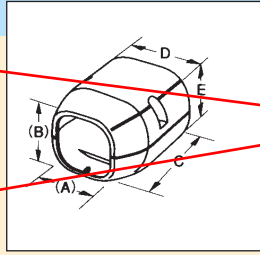
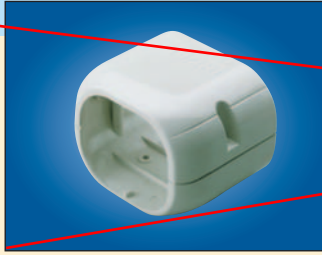
NS-60	2-9/16	2-9/16	3-1/8			2.5
NS-75	3-1/4	2-11/16	3-1/8			2.8
NS-100	4-3/16	2-15/16	3-1/8			3.5
NS-140	5-3/4	3-3/8	3-1/8			4.8



End Socket (Can be cut to accommodate various lineset combinations)

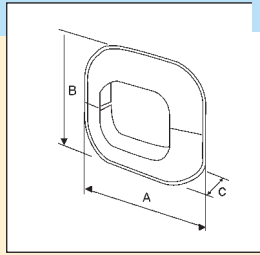
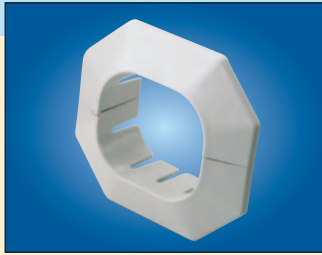
NR-60	2-1/16	1-3/16	3-7/8	2-9/16	2-9/16	2.3
NR-75	2-1/16	1-3/16	3-7/8	3-1/4	2-11/16	2.8
NR-100	2-1/16	1-3/16	4-1/2	4-3/16	2-15/16	4.1
NR-140	2-1/16	1-3/16	5-5/8	5-3/4	3-3/8	7.1

Product	Dimensions (in inches)					Weight (ounces)
	A	B	C	D	E	



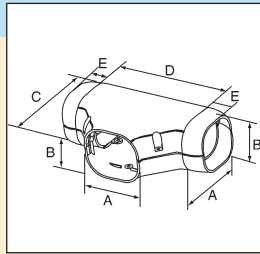
Variant Socket/Reducer (Used to change size of tube)

NJ-60/75	2 3/4	2-11/16	3-1/8	3-1/4	2-11/16	2.8
NJ-75/100	3 3/8	2-13/16	3-1/8	4-3/16	2-15/16	3.7
NJ-100/140	4-1/2	3-1/16	3-1/8	5-3/4	3-3/8	4.8



Ceiling Entry Fitting

NK-60	4-5/16	4-5/16	5/8			2.4
NK-75	4-15/16	4-1/2	5/8			2.7
NK-100	6-7/8	5-11/16	5/8			4.5
NK-140	8-11/16	7-1/16	5/8			6.7



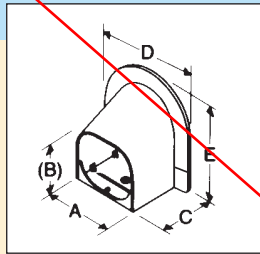
T-Joint

NT-75	3-1/4	2-11/16	4-3/4	6-5/16	1	8.0
NT-100	4-3/16	2-15/16	6-5/16	8-7/16	1-3/8	10.6
NT-140	5-3/4	3-3/8	7-7/8	10	1-3/8	16.4

NT-75 supplied with 2 Reducing Adaptors (75>60)

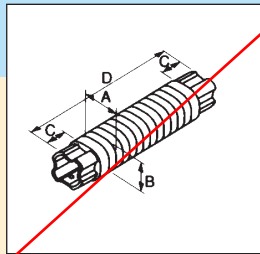
NT-100 supplied with 4 Reducing Adaptors: 2 - (100>60) & 2 - (100>75)

NT-140 supplied with 2 Reducing Adaptors (140>100)



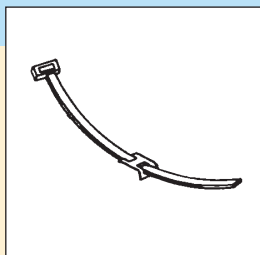
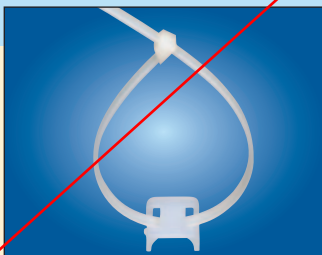
Corner Cap/Soffit Entry Fitting

NA-60	2-5/8	2-9/16	2-5/8	4-1/8	4-5/16	3.2
NA-75	3-5/16	2-3/4	2-5/8	4-7/8	4-15/16	3.5
NA-100	4-5/16	3	2-5/8	5-7/8	5-1/2	4.6
NA-140	5-13/16	3-3/8	2-5/8	7-7/16	6-1/8	5.5



Flexible Joint (Polypropylene material) available in nominal 2-foot and 3-foot lengths

NF-60	2-5/16	2-3/8	2-3/8	21-5/8		4.1
NF-60M	2-5/16	2-3/8	2-3/8	39-3/8		10.2
NF-75	3	2-1/2	2-3/8	21-5/8		4.8
NF-75M	3	2-1/2	2-3/8	39-3/8		12.3
NF-100	4	2-3/4	2-15/16	31-1/2		12.7
NF-140	5-1/2	3-1/8	3-1/8	39-3/8		20.8



Saddle Band

NV-S	11-13/16					0.0
NV-L	14-3/16					0.0

NV-L for 100 and 140; NV-S for 60 and 75

Base snaps into track in line tube to hold lineset in place.

LINE-HIDE™

Lineset Cover System

*Put a professional
finish on air
conditioning
installation with an
easy-to-install
modular system
that beautifies
exteriors and
protects linesets,
drainlines, and
wiring.*

- Available in four sizes — 2 $\frac{1}{4}$ ", 3", 4", and 6" tubes.
- Snap-on covers and a full selection of couplings, elbows, T-joints, caps, and more for any application, complex or simple.
- High-quality PVC with UV inhibitors for outdoor service in all weather conditions.
- Can be painted with most house paints to match exterior decors.
- Not just for HVAC. Hide any exterior cabling, piping, or wiring.
- Use it indoors, too! Meets UL94v-0 for interior applications.



Line-Hide Specifications:

Material	Weather resistant, UV stabilized, ASA/PVC/ABS/Poly/PE
Temperature Range	PVC: -4°F to 140°F ASA: -4°F to 194°F
Fire Rating	PVC/ABS meets UL94v-0, Poly/PE meets UL94HB
Weather Resistance	Pass 2,000 hour test to JIS D0 205 Standard
Standard Color	Ivory
Mounting	Molded in mounting screw locations
Assembly Screws	Stainless Steel

Limited Warranty

Mitsubishi Electric & Electronics USA, Inc. warrants to the original consumer purchaser of a Line-Hide product that it will replace any part which fails due to a manufacturing defect within one year from the date of original purchase. This warranty covers only replacement of the product itself with the owner paying all other costs, including labor, mileage, and transportation.

To make a warranty claim, contact your installer, or contact Mitsubishi Electric & Electronics USA, Inc., at **678/376-2900, fax 678/376-2890**. You must present proof of purchase to make a claim.

WHAT IS NOT COVERED:

Conditions and damages resulting from improper installation, delivery, or maintenance.
Misuse, abuse, accidents, or unreasonable use of product.
The cost of service to correct installation errors.
Consequential or incidental damages sustained by any person as a result of any breach of this warranty.

THIS WARRANTY IS NON-TRANSFERABLE AND IS THE ONLY WARRANTY PROVIDED. ALL OTHER WARRANTIES, INCLUDING THE IMPLIED WARRANTIES OF MERCHANTABILITY AND FITNESS FOR A PARTICULAR PURPOSE, ARE EXPRESSLY DISCLAIMED.

THIS WARRANTY GIVES YOU SPECIFIC LEGAL RIGHTS. HOWEVER, YOU MAY HAVE OTHER RIGHTS WHICH MAY VARY FROM STATE TO STATE. SOME STATES DO NOT ALLOW LIMITATION ON IMPLIED WARRANTIES OR EXCLUSION OF CONSEQUENTIAL DAMAGES; THEREFORE THESE RESTRICTIONS MAY NOT APPLY TO YOU.



**MITSUBISHI
ELECTRIC**

HVAC Advanced Products Division

3400 Lawrenceville Suwanee Rd. • Suwanee, GA 30024

phone 678/376-2900 • fax 678/376-2890 • E-mail line-hide@hvac.mea.com • www.line-hide.com

© 2005 Mitsubishi Electric

LBRC11 06/05 10M

HP-1A, 1B, & 2



HP-3 & 4

